

## Loads on Wheels

- System wide loads on wheels declined for the fourth consecutive day - loads on wheels now at 10,894 - in line with the trailing 30 day average
- Loads on wheels declined by a total of 500 cars reflecting a significant drop in CN volumes (-781) offset by an increase in CP volumes (+262).
- CN volumes declined in 4 of 5 corridors led by the Vancouver (-538), Prince Rupert (-151) and Thunder Bay (-82) corridors. System wide CN loads on wheels are now at 5,191 - 3% below the trailing 30 day average. Drop in LOW a reflection of strong unloads at Vancouver and Prince Rupert as noted below.
- CP volumes increased primarily in the Vancouver corridor (+343) offset by a reduction in Thunder Bay volumes (-130). CP system wide loads on wheels are now at 5,377 - 3% above the trailing 30 day average.
- Vancouver now at 6,091, Prince Rupert at 1,575 and Thunder Bay at 332. Traffic destined to E Canada (+38%) and US (+44%) destinations continue to outpace the trailing 30 day averages.

## Loads Not Moving

- The count of loaded cars not moving on CN and CP for 48 hours or more declined by 304 cars on a net basis reflecting declines in idle cars for both CN and CP - total cars on CN and CP not moving for 48 hours now at 2,504.
- CN
  - The count of cars not moving decreased by 258 cars on a net basis in the prior 24 hours - loads on wheels now idle for 48 hours or more at 732.
  - Idle cars are distributed across the Vancouver (249), USA (138) and E Canada (281) corridors.
- CP
  - CP counts declined slightly (-46) in the prior 24 hours reflecting nominal declines in all corridors other than Vancouver - loads on wheels now idle for 48 hours or more now at 1,772 with 53% of cars sitting at origin locations
  - Vancouver continues to account for the majority of idle cars (52%) with the balance in the E Canada and US corridors.

## Port Performance

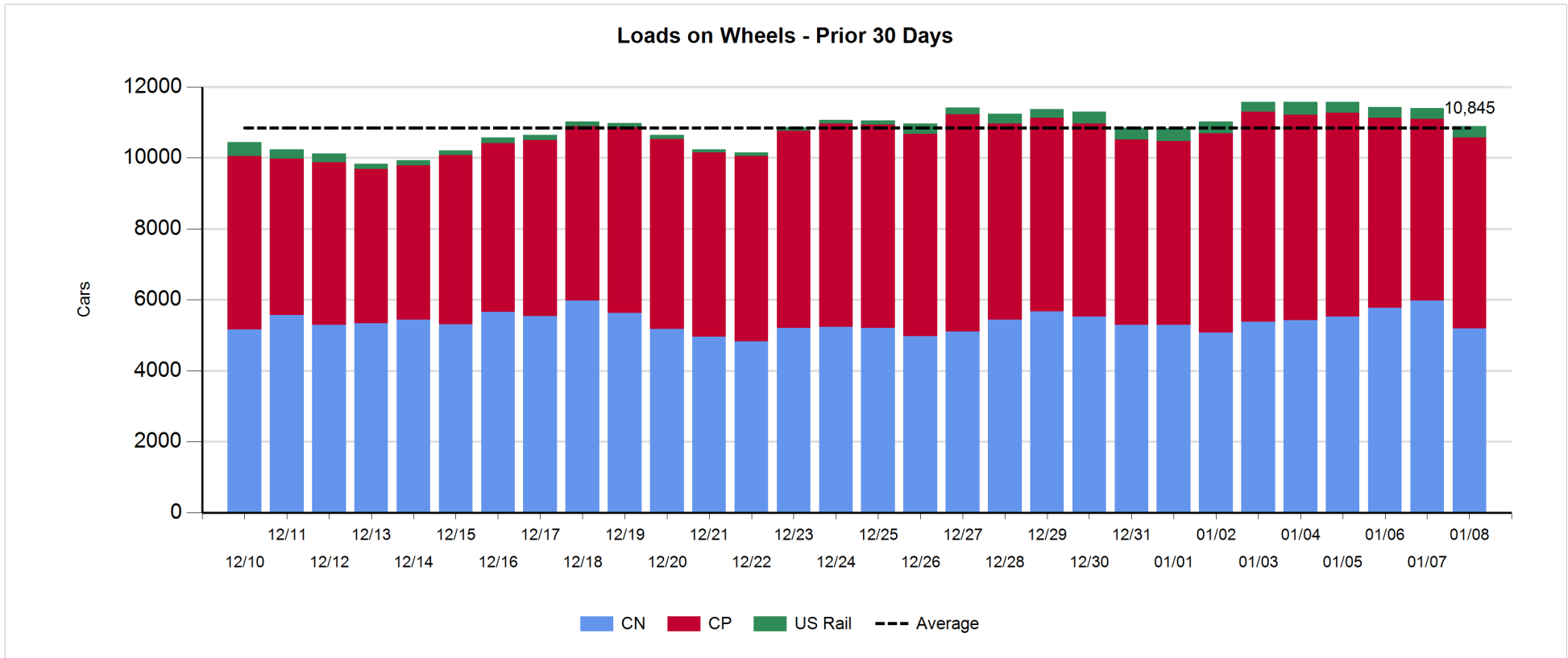
- CN and CP reported a total of 1,460 cars unloaded at the three western ports - some 50% higher than average Monday unloads over the prior 30 days.
- Vancouver
  - Total of 986 cars reported unloaded by CN and CP at the Port of Vancouver; CN - 584 and CP - 402.
  - There are currently 1,659 cars on hand at Vancouver waiting placement for unloading following the arrival of more than 900 cars at Vancouver for the second day in a row.
- Thunder Bay
  - Total of 211 cars reported unloaded by CN and CP in the prior 24 hours.
  - Cars at Thunder Bay waiting placement now at 77.

**Daily Loads on Wheels - 1/8/2018**

	E Canada	Prince Rupert	Thunder Bay	USA/MEX	Vancouver	Total
CN	485	1,575	298	436	2,397	5,191
CP	835		34	846	3,662	5,377
Short Line	31				32	63
US Rail				263		263
	1,351	1,575	332	1,545	6,091	10,894

**Change in Loads on Wheels - Prior 24 Hours**

	E Canada	Prince Rupert	Thunder Bay	USA/MEX	Vancouver	Total
CN	6	-151	-82	-16	-538	-781
CP	28		-130	21	343	262
Short Line	1				-15	-14
US Rail				33		33
	35	-151	-212	38	-210	-500

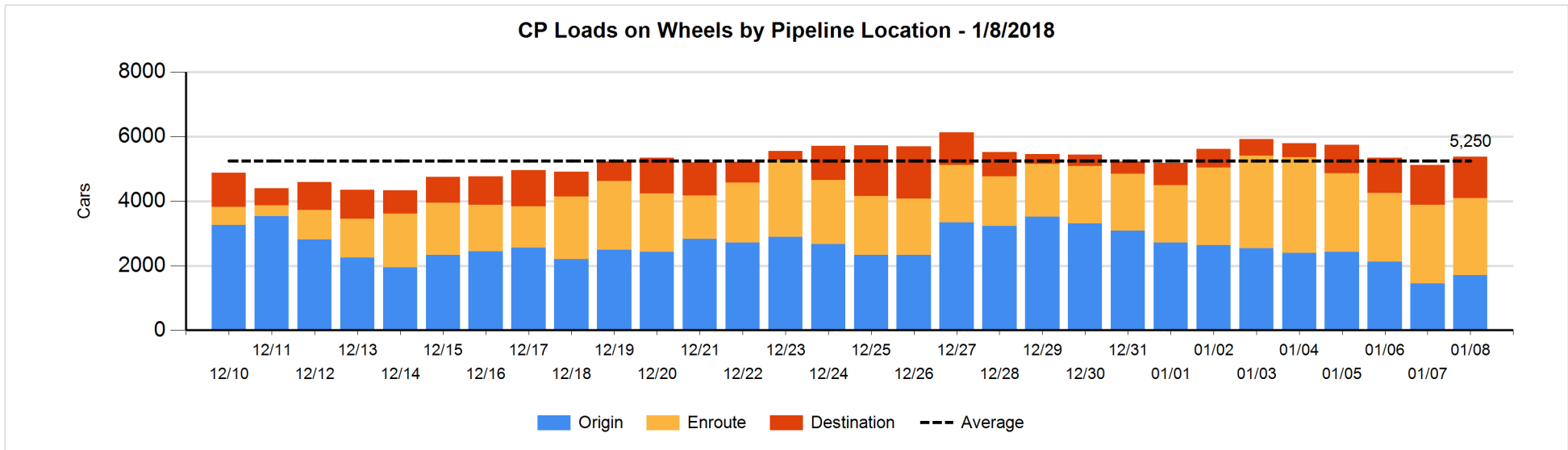
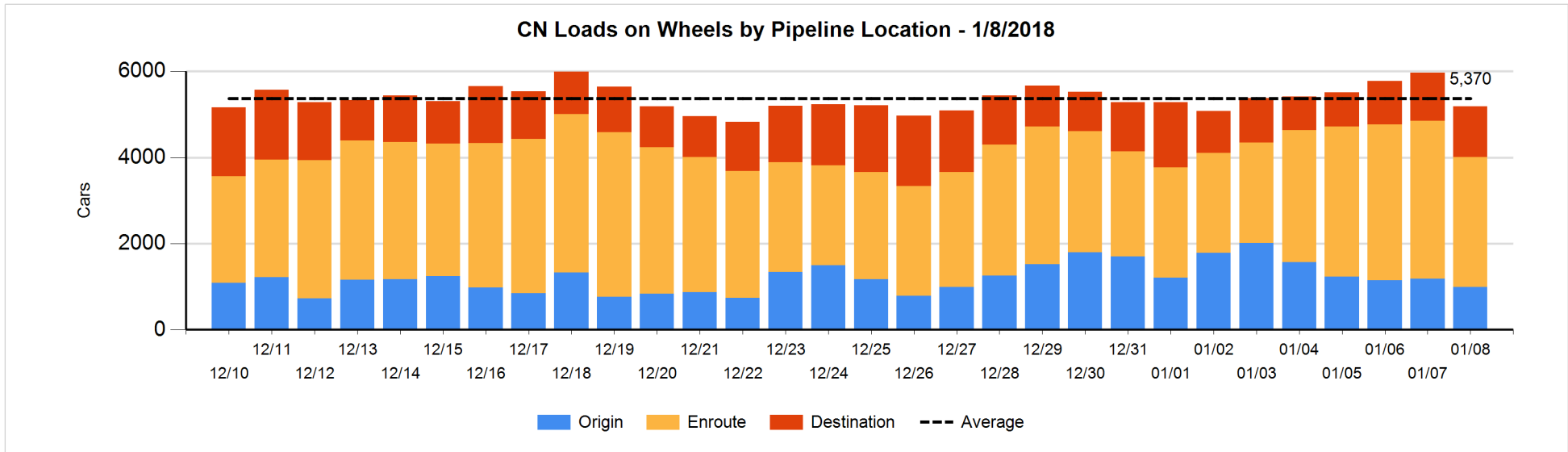


**Daily Loads on Wheels By Pipeline Location - 1/8/2018**

	E Canada	Prince Rupert	Thunder Bay	USA/MEX	Vancouver	Total
CN						
Origin	26	478		101	388	993
Enroute	387	831	137	300	1,355	3,010
Destination	72	266	161	35	654	1,188
	485	1,575	298	436	2,397	5,191
CP						
Origin	272			203	1,237	1,712
Enroute	563		4	582	1,240	2,389
Destination			30	61	1,185	1,276
	835		34	846	3,662	5,377
US Rail / Short Line						
Origin						
Enroute	26			115		141
Destination	5			148	32	185
	31			263	32	326

**Change in Daily Loads on Wheels By Pipeline Location - Prior 24 Hours**

	E Canada	Prince Rupert	Thunder Bay	USA/MEX	Vancouver	Total
CN						
Origin	0	-3	-1	-9	-179	-192
Enroute	5	-280	-99	-32	-244	-650
Destination	1	132	18	25	-115	61
	6	-151	-82	-16	-538	-781
CP						
Origin	-9			1	265	257
Enroute	37		0	-5	-71	-39
Destination			-130	25	149	44
	28		-130	21	343	262
US Rail / Short Line						
Origin						
Enroute	0			-24		-24
Destination	1			57	-15	43
	1			33	-15	19

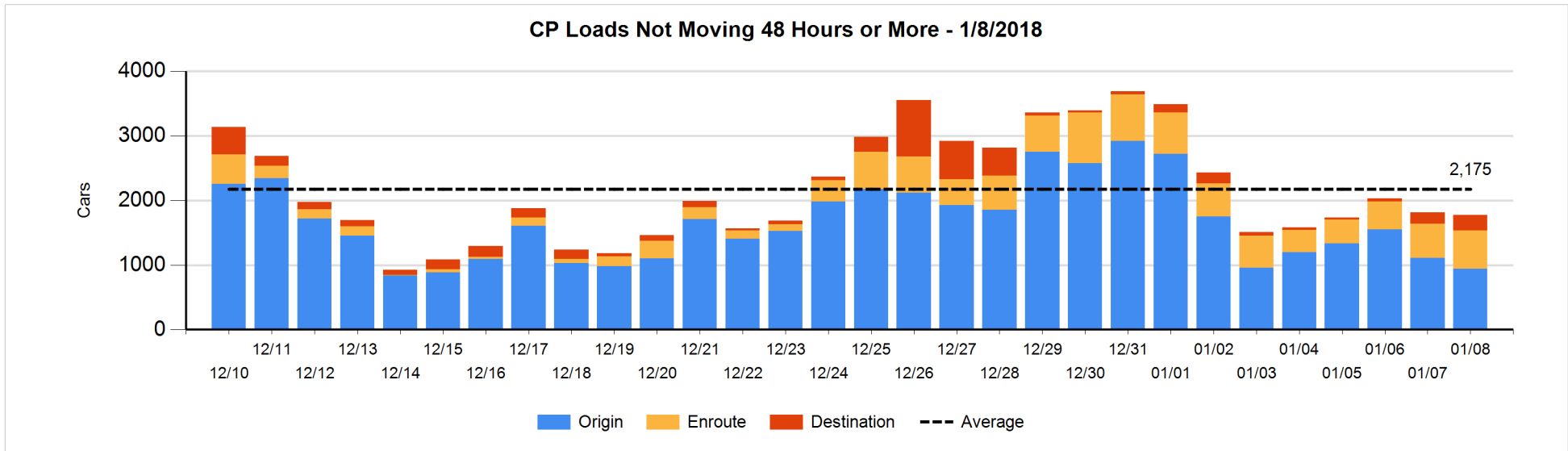
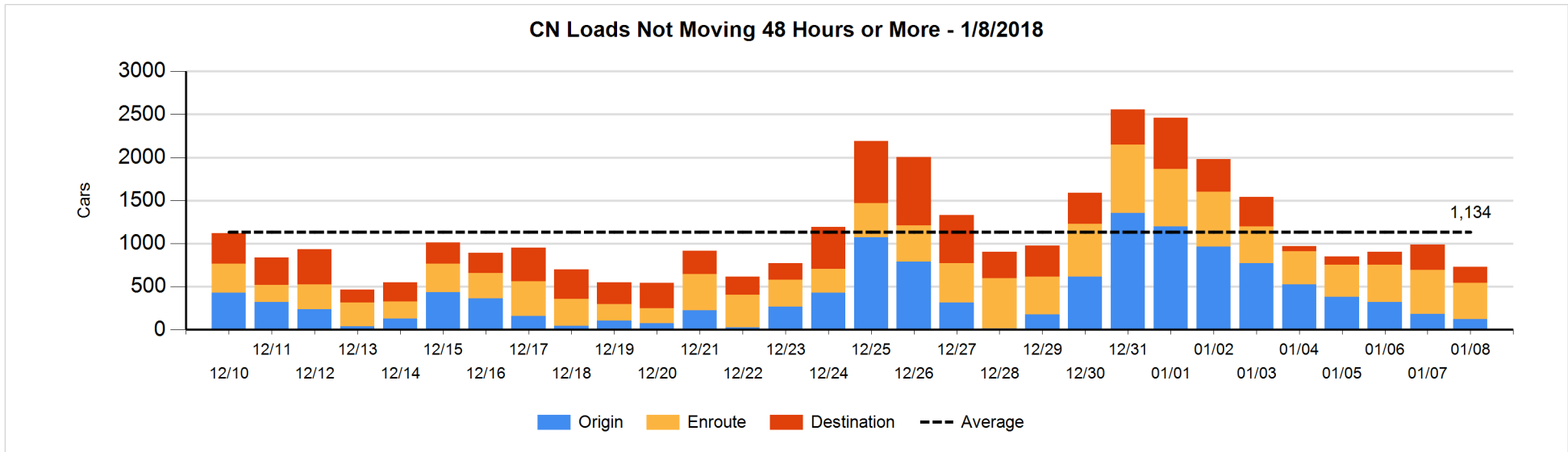


**Loads Not Moving 48 Hours or More - 1/8/2018**

	E Canada	Prince Rupert	Thunder Bay	USA/MEX	Vancouver	Total
CN						
Origin	26	8		50	36	120
Enroute	242	3	33	86	59	423
Destination	13	1	19	2	154	189
	281	12	52	138	249	732
CP						
Origin	224			126	590	940
Enroute	297		2	158	136	593
Destination			19	4	216	239
	521		21	288	942	1772
US Rail / Short Line						
Origin						
Enroute	26			29		55
Destination	1			41	15	57
	27			70	15	112

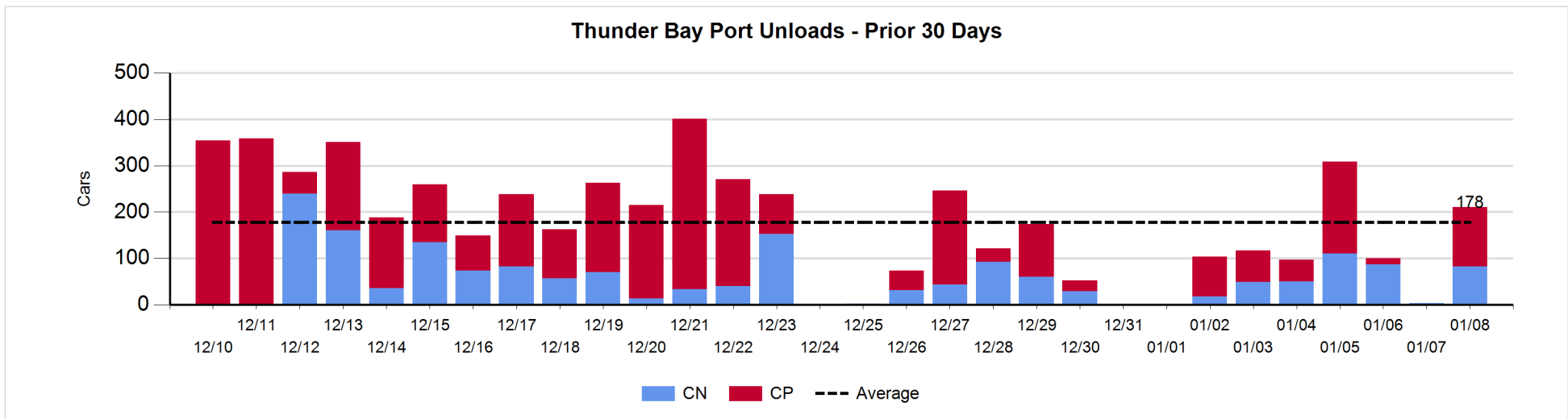
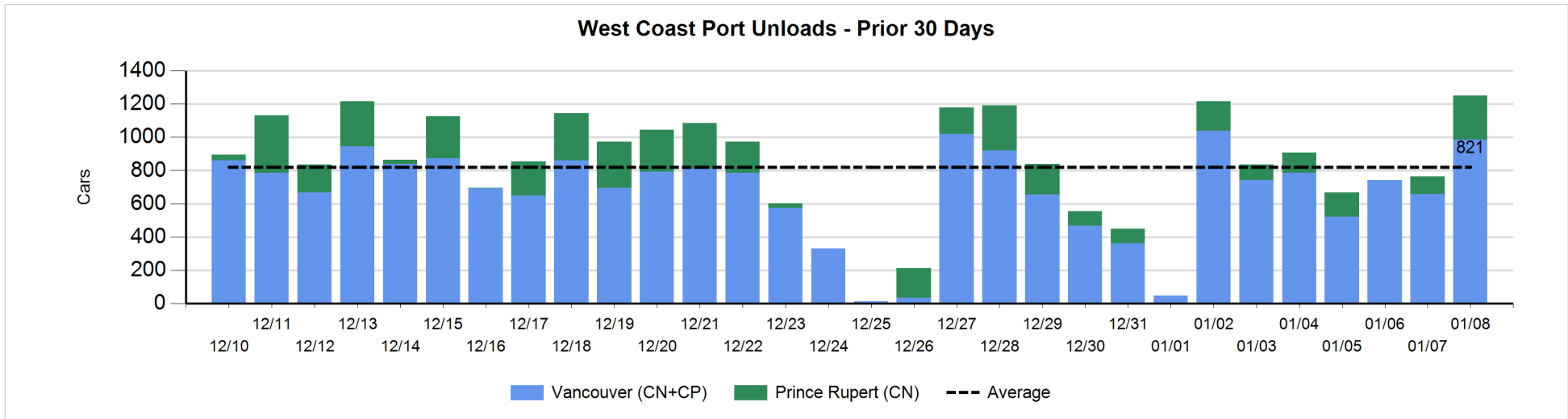
**Change in Loads Not Moving 48 Hours or More - 1/8/2018**

	E Canada	Prince Rupert	Thunder Bay	USA/MEX	Vancouver	Total
CN						
Origin	26	-10	-1	-4	-76	-65
Enroute	-39	-16	2	59	-92	-86
Destination	-32	-1	-19	0	-55	-107
	-45	-27	-18	55	-223	-258
CP						
Origin	55			-76	-150	-171
Enroute	-77		-2	93	50	64
Destination			-26	-25	112	61
	-22		-28	-8	12	-46
US Rail / Short Line						
Origin						
Enroute	0			-5		-5
Destination	0			3	-3	0
	0			-2	-3	-5



**Port Unloads - 1/8/2018**

	Prince Rupert	Vancouver	West Coast Total	Thunder Bay	Total
CN	263	584	847	82	929
CP		402	402	129	531
	263	986	1,249	211	1,460



## Port Terminal Status

### Vancouver

#### Daily Activity for 1/8/2018

	Cars Arrived	Cars Received in Interchange	Cars Delivered in Interchange	Cars Placed for Unloading	Loads on Wheels at Destination As of 1/8/2018
CN	671	214	318	306	654
CP	351	318	217	317	1,185
SRY	1	3		15	32

### Port Unloads

	01/08	01/07	Week To Date	Last Week
CN	584	230	584	2,303
CP	402	428	402	2,235
SRY	20	3	20	33

## Age Profile of Loaded Cars Waiting Placement for Unloading

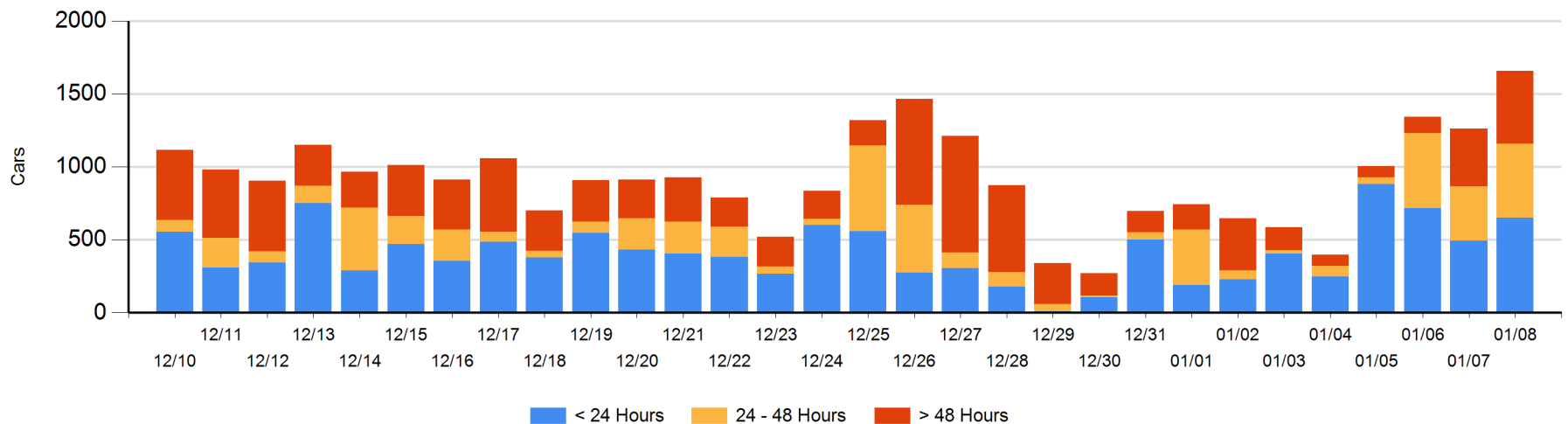
### Today

	< 24 Hrs	24 - 48 Hrs	> 48-72 Hrs	> 72 Hrs	Total On Hand
CN	412	264	20	102	798
CP	240	242	268	111	861
SRY					0

### Change in Last 24 Hours

	< 24 Hrs	24-48 Hrs	48 - 72 Hrs	> 72 Hrs
CN	172	243	-108	33
CP	-12	-112	80	99
SRY				

Loaded Cars on Hand Vancouver Waiting for Placement - Last 30 Days All Railways





**Port Terminal Status**

**Prince Rupert**

**Daily Activity for 1/8/2018**

	Cars Arrived	Cars Received in Interchange	Cars Delivered in Interchange	Cars Placed for Unloading	Loads on Wheels at Destination As of 1/8/2018
CN	394			317	266

**Port Unloads**

	01/08	01/07	Week To Date	Last Week
CN	263	106	263	644

**Age Profile of Loaded Cars Waiting Placement for Unloading**

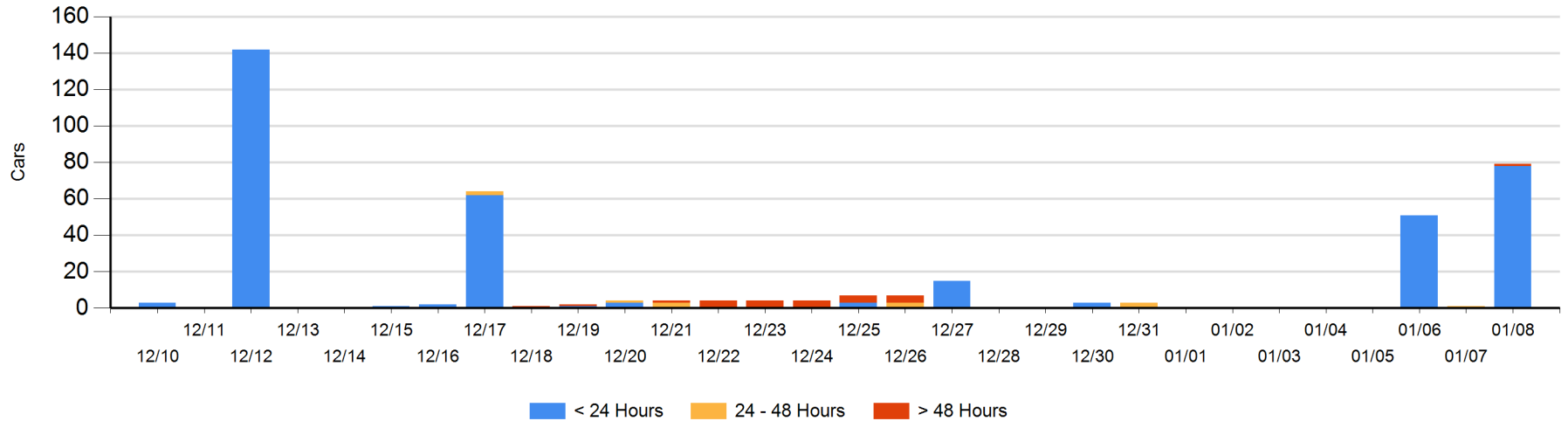
**Today**

	< 24 Hrs	24 - 48 Hrs	> 48-72 Hrs	> 72 Hrs	Total On Hand
CN	78		1		79

**Change in Last 24 Hours**

	< 24 Hrs	24-48 Hrs	48 - 72 Hrs	> 72 Hrs
CN	78	-1	1	

**Loaded Cars on Hand Prince Rupert Waiting for Placement - Last 30 Days All Railways**



**Port Terminal Status**

**Thunder Bay**

Daily Activity for 1/8/2018

	Cars Arrived	Cars Received in Interchange	Cars Delivered in Interchange	Cars Placed for Unloading	Loads on Wheels at Destination As of 1/8/2018
CN	99			59	161
CP					30

**Port Unloads**

	01/08	01/07	Week To Date	Last Week
CN	82	3	82	317
CP	129		129	413

**Age Profile of Loaded Cars Waiting Placement for Unloading**

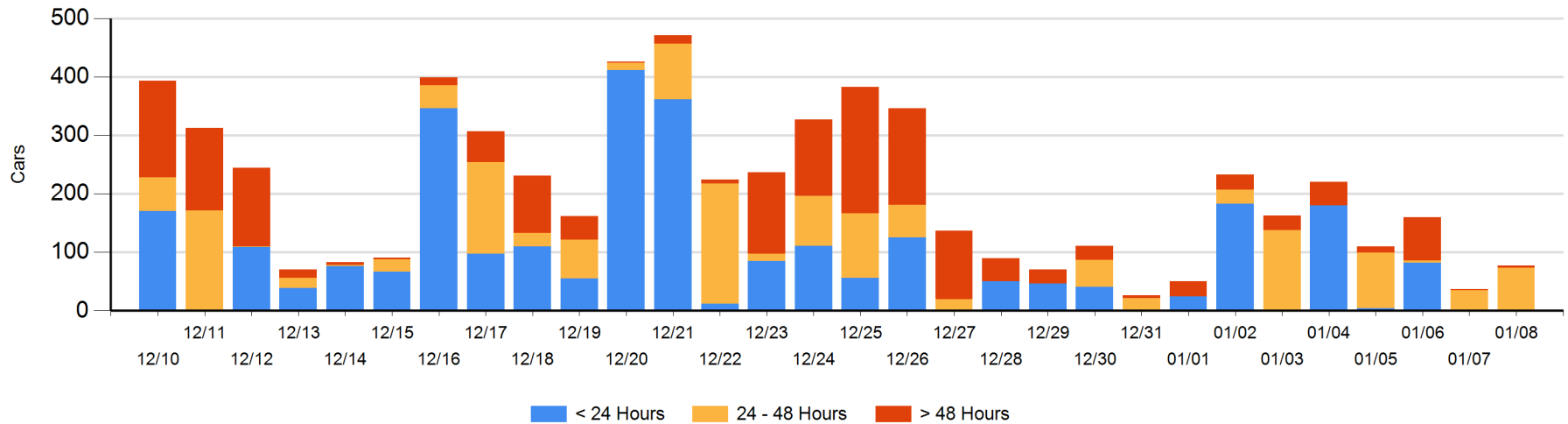
**Today**

	< 24 Hrs	24 - 48 Hrs	> 48-72 Hrs	> 72 Hrs	Total On Hand
CN		73			73
CP			2	2	4

**Change in Last 24 Hours**

	< 24 Hrs	24-48 Hrs	48 - 72 Hrs	> 72 Hrs
CN		40		
CP		-2	2	0

Loaded Cars on Hand Thunder Bay Waiting for Placement - Last 30 Days All Railways



## Measurement Definitions

Loads on Wheels	<p>Count of loaded rail cars including all rail cars that have been released loaded at origin and have not been reported by the railway as unloaded at destination.</p> <p>Counts include all rail cars (hopper cars and boxcars) moving within a pipeline.</p>
Loads Not Moving	<p>Loaded rail cars for which the railways have not reported a movement event for 48 hours or more whether the rail car is at origin, enroute or at destination.</p>
Port Unloads	<p>Count of rail cars reported by railways as unloaded at the western port destinations of Vancouver, Prince Rupert and Thunder Bay.</p> <p>Unload counts include all rail cars (hopper cars and boxcars) unloaded by all receivers including major port terminals, transloaders and other receivers.</p>
Cars Arrived	<p>Count of rail cars reported as arrived at the destination railway terminal.</p>
Cars Received in Interchange	<p>Count of rail cars received in interchange by each railway within a destination railway terminal. Interchange activity is tracked for the Vancouver and Thunder Bay pipelines as applicable.</p>
Cars Delivered in Interchange	<p>Count of rail cars delivered in interchange by each railway within a destination railway terminal. Interchange activity is tracked for the Vancouver and Thunder Bay pipelines as applicable.</p>
Cars Placed for Unloading	<p>Count of rail cars reported by the railways as placed loaded at the receiver's facility for unloading.</p>
Loads on Wheels at Destination	<p>Count of rail cars that remain under load within the destination railway terminal including rail cars that have been reported as placed for unloading but not yet reported as unloaded.</p>
Waiting Placement for Unloading	<p>Count of rail cars that have been reported as arrived at the destination railway terminal but not reported as placed for unloading by the railway.</p> <p>For the Ports of Vancouver, Prince Rupert and Thunder Bay the count of rail cars waiting placement for unloading is categorized by age – i.e. the elapsed time from arrival at destination to the current report date.</p>