

Loads on Wheels

- System wide loads on wheels declined for the sixth consecutive day - loads on wheels now at 9,615 - dropping below the 10,000 car threshold for only the 2nd time in the prior 30 days and 11% below the trailing 30 day average
- Loads on wheels declined by a total of 549 cars reflecting declines in both CN (-224) and CP(-285) volumes.
- CN volumes declined in 4 of 5 corridors led by the Prince Rupert corridor (-307) offset by an increase in E Canada destined traffic. System wide CN loads on wheels are now at 4,713 - the lowest level in the prior 30 days and 12% below the trailing 30 day average.
- CP volumes declined in 3 of 4 corridors led by the Vancouver (-108) and US (-157) corridors. CP system wide loads on wheels are now at 4,553 - the lowest level in the prior 3 weeks and 13% below the trailing 30 day average.
- Vancouver now at 5,476 - the lowest level in the prior 30 days - Prince Rupert at 1,139 and Thunder Bay at 215. Traffic destined to E Canada (+48%) and US (+11%) destinations continue to outpace the trailing 30 day averages.

Loads Not Moving

- The count of loaded cars not moving on CN and CP for 48 hours or more declined by 620 cars in the prior 24 hours reflecting declines on both CN and CP - total cars on CN and CP not moving for 48 hours now at 1,747 - the lowest level in the prior 3 weeks.
- CN
 - The count of cars not moving decreased by 486 cars on a net basis in the prior 24 hours reflecting declines in all corridors - loads on wheels now idle for 48 hours or more at 446 - the lowest level in the last 30 days.
 - Vancouver accounts for 50% of all idle cars with the majority of cars dwelling in Vancouver proper.
- CP
 - CP counts declined by 134 cars in the prior 24 hours reflecting declines in all corridors - primarily Vancouver (-114) - loads on wheels now idle for 48 hours or more now at 1,301.
 - 68% of idle cars are destined to Vancouver with 80% of those dwelling at origin locations.

Port Performance

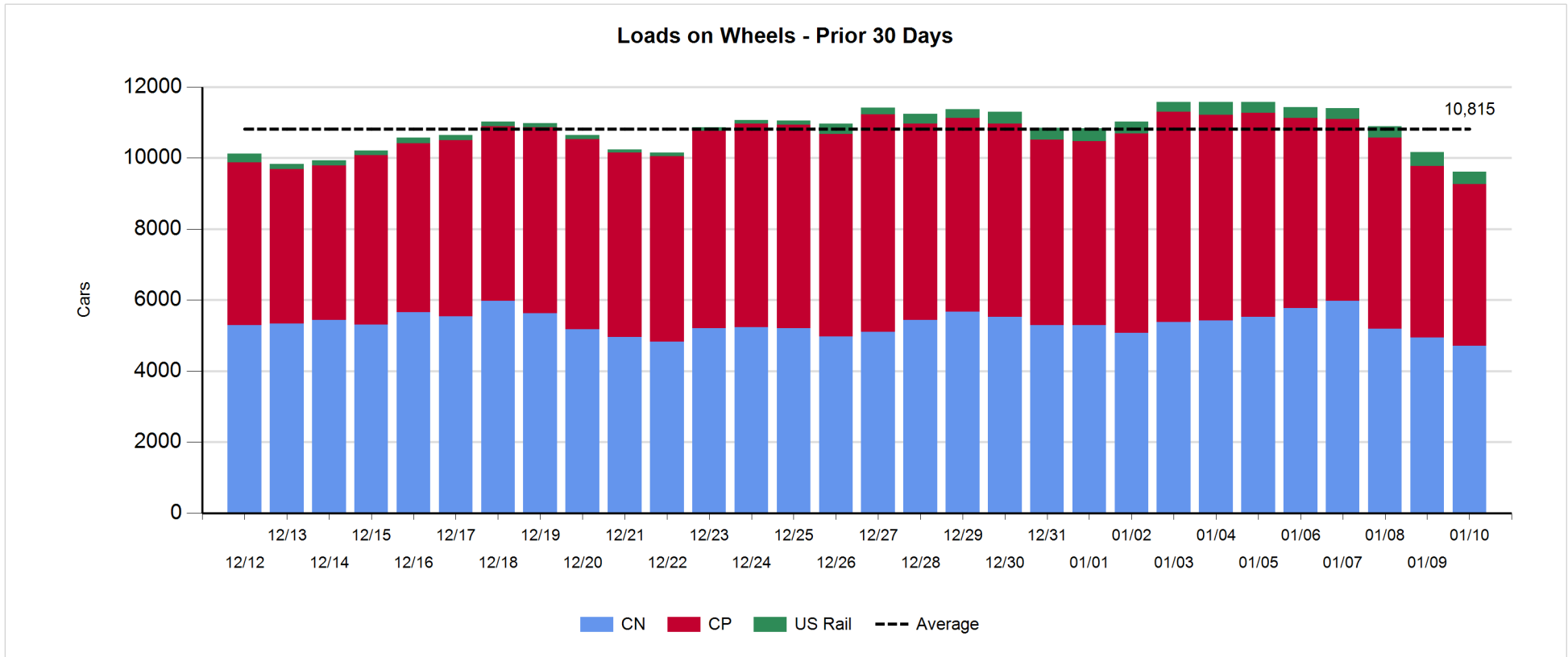
- CN and CP reported a total of 1,169 cars unloaded at the three western ports - through the first three days of week 24 unloads continue to outpace last week (+68%) reflecting improved week over week unloads at all three port destinations.
- Vancouver
 - Total of 843 cars reported unloaded by CN and CP at the Port of Vancouver; CN - 365 and CP - 478.
 - There are currently 1,133 cars on hand at Vancouver waiting placement for unloading - 232 of which arrived at Vancouver more than 72 hours ago.
- Thunder Bay
 - Total of 18 cars reported unloaded by CN and CP in the prior 24 hours.
 - Cars at Thunder Bay waiting placement now at 6.

Daily Loads on Wheels - 1/10/2018

	E Canada	Prince Rupert	Thunder Bay	USA/MEX	Vancouver	Total
CN	800	1,139	207	407	2,160	4,713
CP	730		8	537	3,278	4,553
Short Line	14				38	52
US Rail				297		297
	1,544	1,139	215	1,241	5,476	9,615

Change in Loads on Wheels - Prior 24 Hours

	E Canada	Prince Rupert	Thunder Bay	USA/MEX	Vancouver	Total
CN	117	-307	-18	-5	-11	-224
CP	-20		0	-157	-108	-285
Short Line	-23				3	-20
US Rail				-20		-20
	74	-307	-18	-182	-116	-549

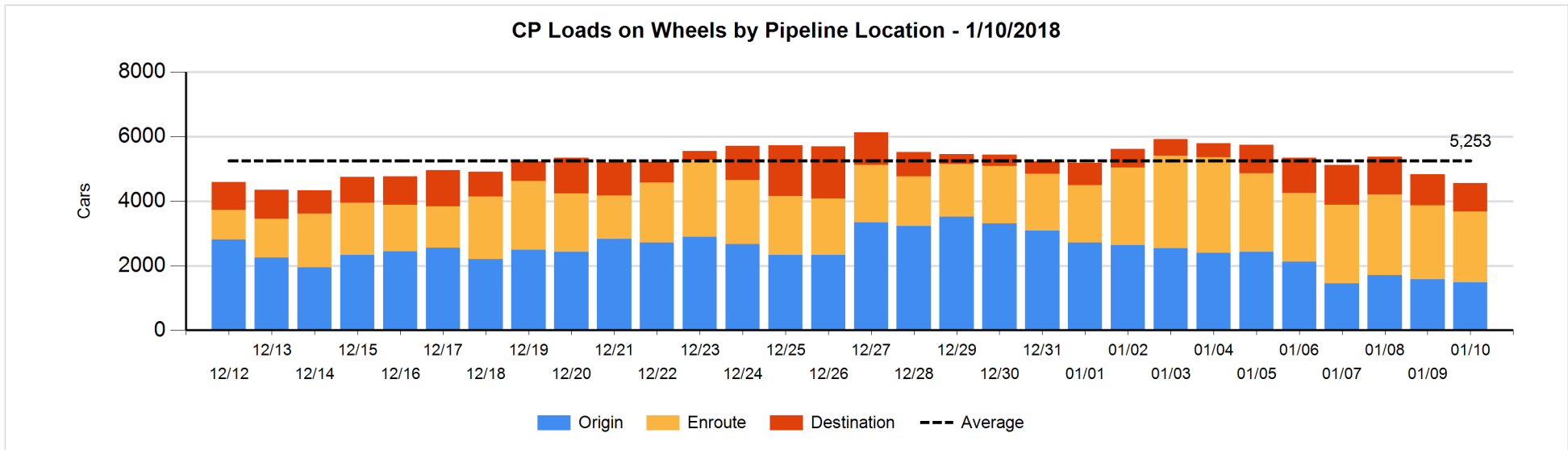
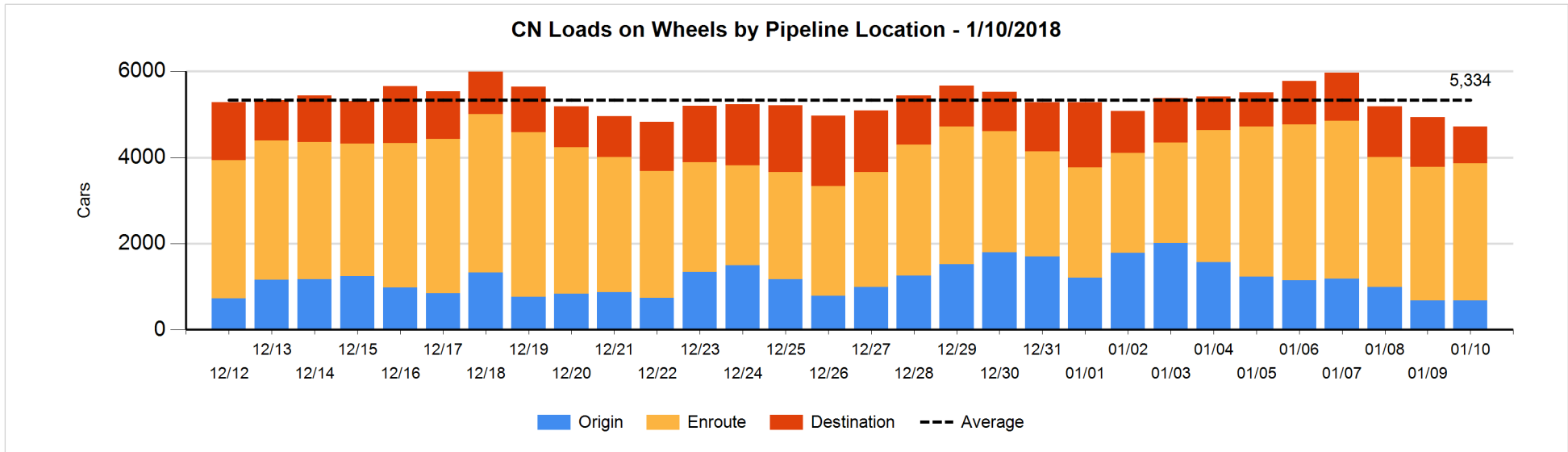


Daily Loads on Wheels By Pipeline Location - 1/10/2018

	E Canada	Prince Rupert	Thunder Bay	USA/MEX	Vancouver	Total
CN						
Origin	125	53		66	431	675
Enroute	608	981	32	327	1,240	3,188
Destination	67	105	175	14	489	850
	800	1,139	207	407	2,160	4,713
CP						
Origin	169			131	1,185	1,485
Enroute	560		2	341	1,290	2,193
Destination	1		6	65	803	875
	730		8	537	3,278	4,553
US Rail / Short Line						
Origin						
Enroute	6			159		165
Destination	8			138	38	184
	14			297	38	349

Change in Daily Loads on Wheels By Pipeline Location - Prior 24 Hours

	E Canada	Prince Rupert	Thunder Bay	USA/MEX	Vancouver	Total
CN						
Origin	99	-308		-20	228	-1
Enroute	22	183	-105	31	-52	79
Destination	-4	-182	87	-16	-187	-302
	117	-307	-18	-5	-11	-224
CP						
Origin	-18			-73	1	-90
Enroute	-3		0	-76	-30	-109
Destination	1		0	-8	-79	-86
	-20		0	-157	-108	-285
US Rail / Short Line						
Origin	-6					-6
Enroute	-20			-35		-55
Destination	3			15	3	21
	-23			-20	3	-40

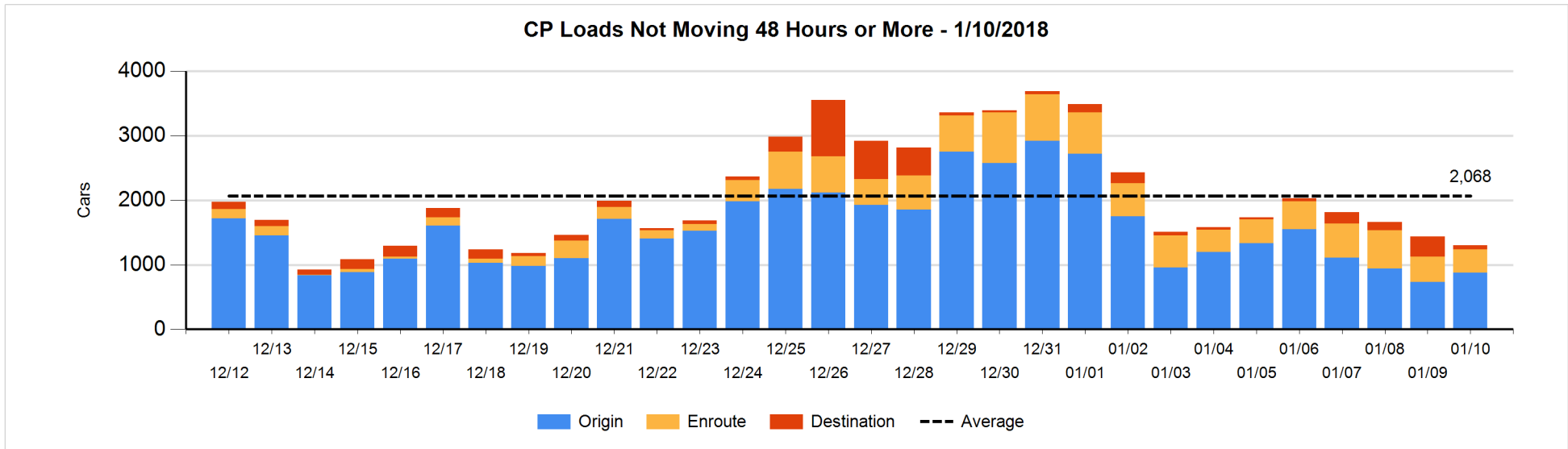
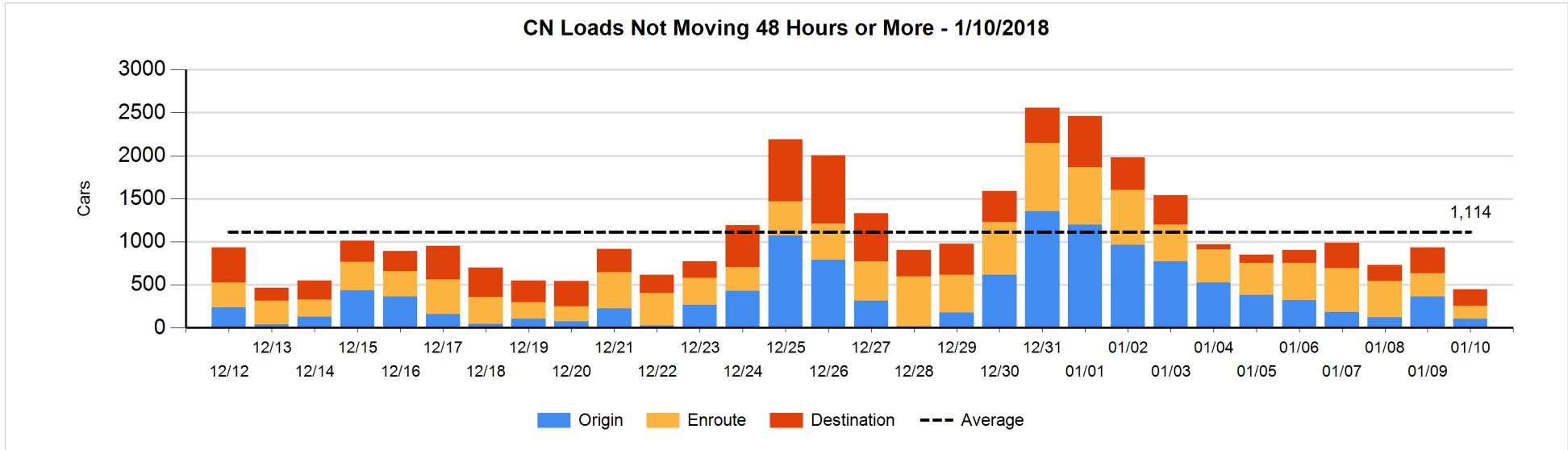


Loads Not Moving 48 Hours or More - 1/10/2018

	E Canada	Prince Rupert	Thunder Bay	USA/MEX	Vancouver	Total
CN						
Origin		47		50	5	102
Enroute	34	32	20	5	60	151
Destination	24		12	4	153	193
	58	79	32	59	218	446
CP						
Origin	111			128	640	879
Enroute	77		2	81	196	356
Destination			4	10	52	66
	188		6	219	888	1301
US Rail / Short Line						
Origin						
Enroute				25		25
Destination	1			24	10	35
	1			49	10	60

Change in Loads Not Moving 48 Hours or More - 1/10/2018

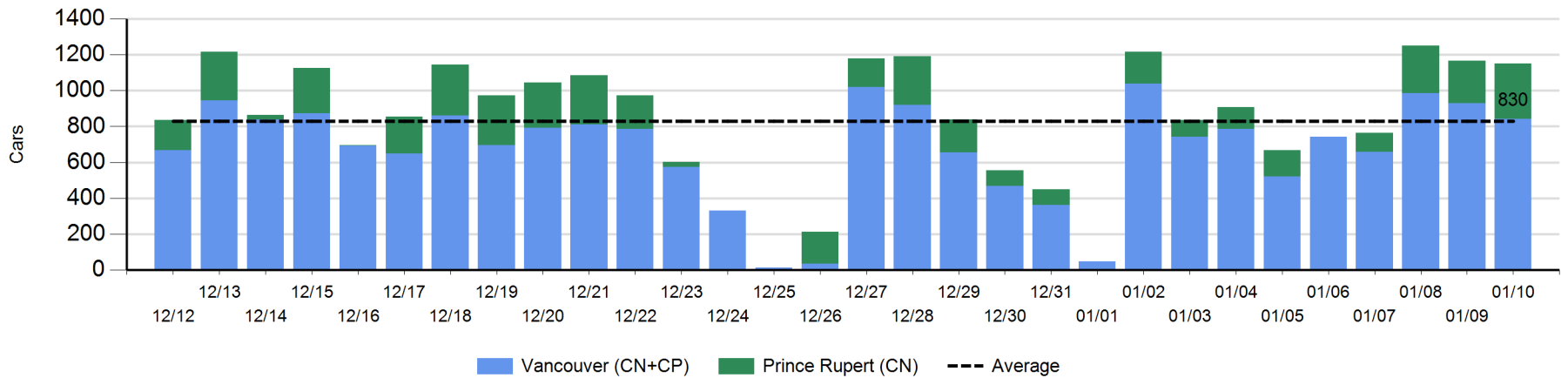
	E Canada	Prince Rupert	Thunder Bay	USA/MEX	Vancouver	Total
CN						
Origin	-26	-143		-1	-93	-263
Enroute	-103	29	-13	-14	-15	-116
Destination	-3	-8	-76	4	-24	-107
	-132	-122	-89	-11	-132	-486
CP						
Origin	0			2	142	144
Enroute	-3		0	-29	-1	-33
Destination			0	10	-255	-245
	-3		0	-17	-114	-134
US Rail / Short Line						
Origin						
Enroute				-3		-3
Destination	0			3	-3	0
	0			0	-3	-3



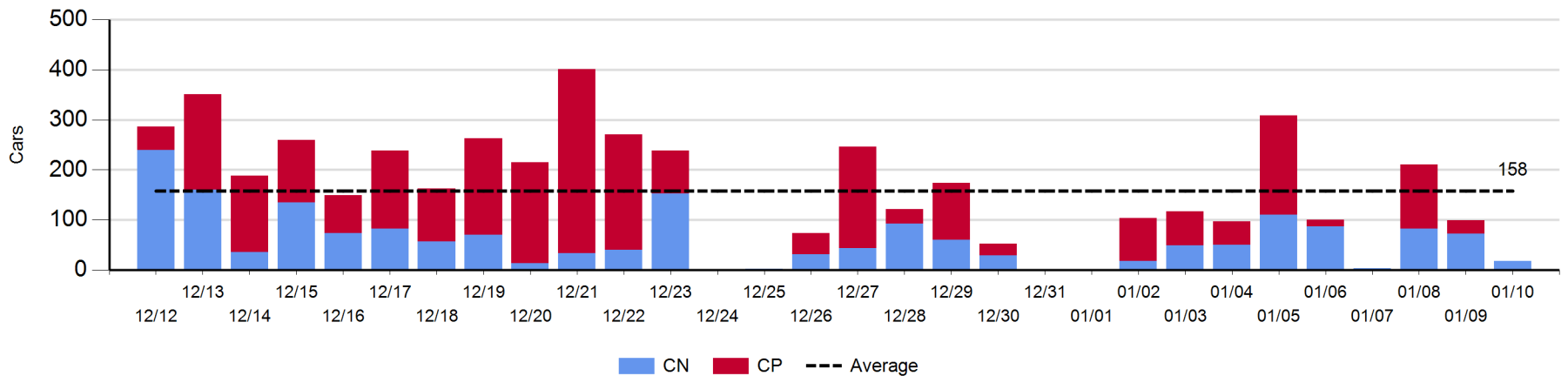
Port Unloads - 1/10/2018

	Prince Rupert	Vancouver	West Coast Total	Thunder Bay	Total
CN	308	365	673	18	691
CP		478	478		478
	308	843	1,151	18	1,169

West Coast Port Unloads - Prior 30 Days



Thunder Bay Port Unloads - Prior 30 Days



Port Terminal Status

Vancouver

Daily Activity for 1/10/2018

	Cars Arrived	Cars Received in Interchange	Cars Delivered in Interchange	Cars Placed for Unloading	Loads on Wheels at Destination As of 1/10/2018
CN	207	147	148	383	489
CP	378	148	155	536	803
SRY	1	8		4	38

Port Unloads

	01/10	01/09	Week To Date	Last Week
CN	365	406	1,355	2,303
CP	478	522	1,402	2,235
SRY	5	14	39	33

Age Profile of Loaded Cars Waiting Placement for Unloading

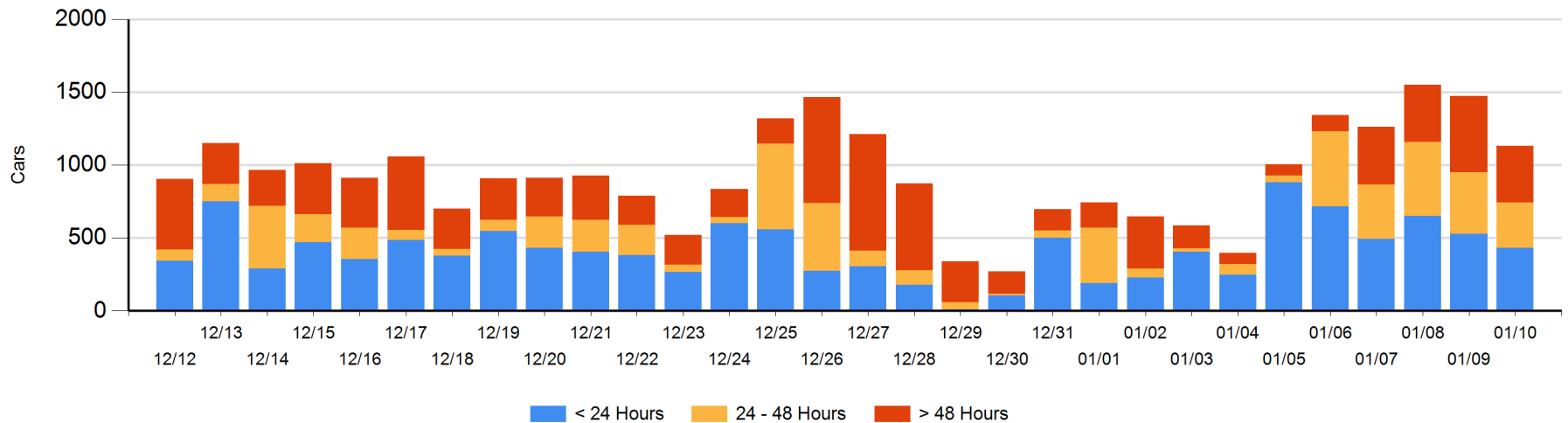
Today

	< 24 Hrs	24 - 48 Hrs	> 48-72 Hrs	> 72 Hrs	Total On Hand
CN	165	58	128	150	501
CP	266	255	29	82	632
SRY					0

Change in Last 24 Hours

	< 24 Hrs	24-48 Hrs	48 - 72 Hrs	> 72 Hrs
CN	-1	-170	48	54
CP	-97	61	-100	-137
SRY				

Loaded Cars on Hand Vancouver Waiting for Placement - Last 30 Days All Railways



Port Terminal Status

Prince Rupert

Daily Activity for 1/10/2018

	Cars Arrived	Cars Received in Interchange	Cars Delivered in Interchange	Cars Placed for Unloading	Loads on Wheels at Destination As of 1/10/2018
CN	63			50	105

Port Unloads

	01/10	01/09	Week To Date	Last Week
CN	308	238	809	644

Age Profile of Loaded Cars Waiting Placement for Unloading

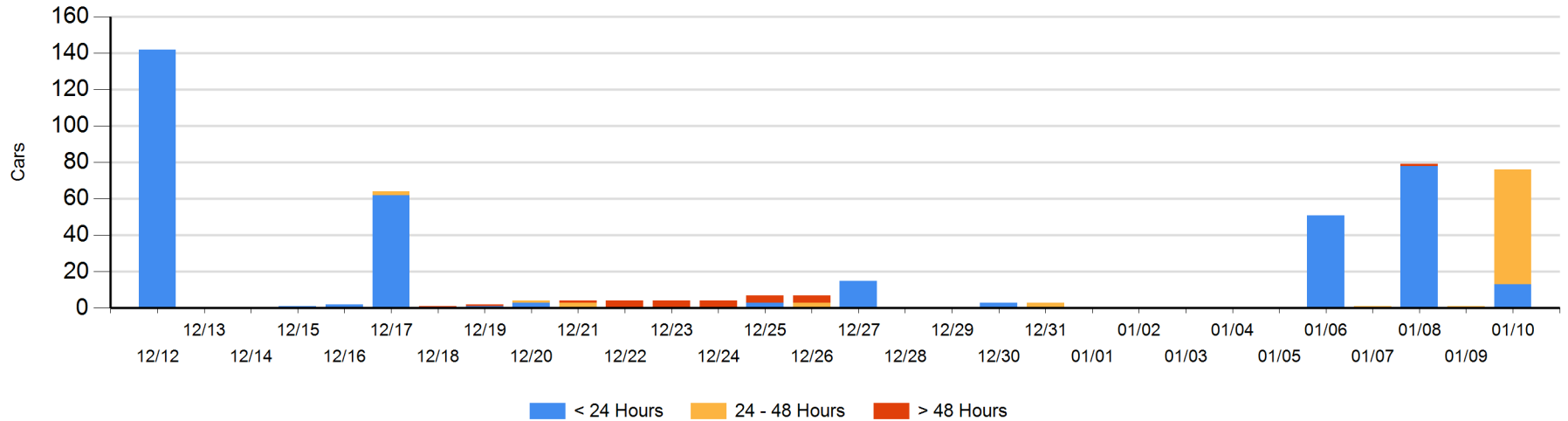
Today

	< 24 Hrs	24 - 48 Hrs	> 48-72 Hrs	> 72 Hrs	Total On Hand
CN	13	63			76

Change in Last 24 Hours

	< 24 Hrs	24-48 Hrs	48 - 72 Hrs	> 72 Hrs
CN	13	62		

Loaded Cars on Hand Prince Rupert Waiting for Placement - Last 30 Days All Railways



Port Terminal Status

Thunder Bay

Daily Activity for 1/10/2018

	Cars Arrived	Cars Received in Interchange	Cars Delivered in Interchange	Cars Placed for Unloading	Loads on Wheels at Destination As of 1/10/2018
CN	104			177	175
CP					6

Port Unloads

	01/10	01/09	Week To Date	Last Week
CN	18	73	173	317
CP		26	155	413

Age Profile of Loaded Cars Waiting Placement for Unloading

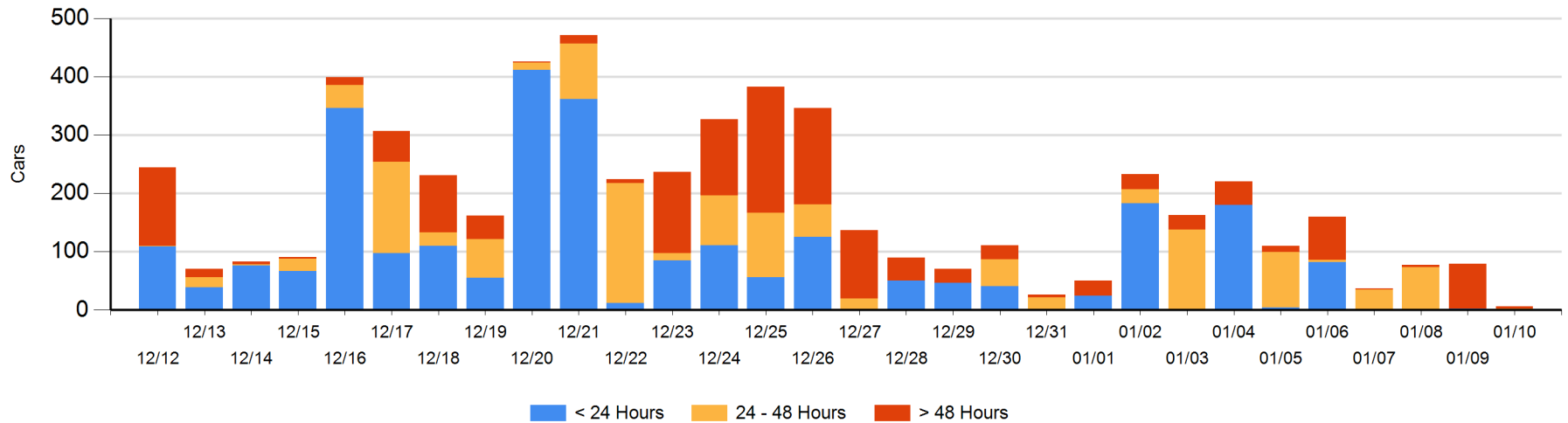
Today

	< 24 Hrs	24 - 48 Hrs	> 48-72 Hrs	> 72 Hrs	Total On Hand
CN					0
CP		2		4	6

Change in Last 24 Hours

	< 24 Hrs	24-48 Hrs	48 - 72 Hrs	> 72 Hrs
CN			-73	
CP	-2	2		0

Loaded Cars on Hand Thunder Bay Waiting for Placement - Last 30 Days All Railways



Measurement Definitions

Loads on Wheels	<p>Count of loaded rail cars including all rail cars that have been released loaded at origin and have not been reported by the railway as unloaded at destination.</p> <p>Counts include all rail cars (hopper cars and boxcars) moving within a pipeline.</p>
Loads Not Moving	<p>Loaded rail cars for which the railways have not reported a movement event for 48 hours or more whether the rail car is at origin, enroute or at destination.</p>
Port Unloads	<p>Count of rail cars reported by railways as unloaded at the western port destinations of Vancouver, Prince Rupert and Thunder Bay.</p> <p>Unload counts include all rail cars (hopper cars and boxcars) unloaded by all receivers including major port terminals, transloaders and other receivers.</p>
Cars Arrived	<p>Count of rail cars reported as arrived at the destination railway terminal.</p>
Cars Received in Interchange	<p>Count of rail cars received in interchange by each railway within a destination railway terminal. Interchange activity is tracked for the Vancouver and Thunder Bay pipelines as applicable.</p>
Cars Delivered in Interchange	<p>Count of rail cars delivered in interchange by each railway within a destination railway terminal. Interchange activity is tracked for the Vancouver and Thunder Bay pipelines as applicable.</p>
Cars Placed for Unloading	<p>Count of rail cars reported by the railways as placed loaded at the receiver's facility for unloading.</p>
Loads on Wheels at Destination	<p>Count of rail cars that remain under load within the destination railway terminal including rail cars that have been reported as placed for unloading but not yet reported as unloaded.</p>
Waiting Placement for Unloading	<p>Count of rail cars that have been reported as arrived at the destination railway terminal but not reported as placed for unloading by the railway.</p> <p>For the Ports of Vancouver, Prince Rupert and Thunder Bay the count of rail cars waiting placement for unloading is categorized by age – i.e. the elapsed time from arrival at destination to the current report date.</p>