

## SPEED READ

- Loads on wheels increased overnight, marking a rise in both CN and CP volumes. On a net basis, volumes increased due to higher traffic in the Vancouver, Prince Rupert and USA/MEX corridors offset by lower volumes in the Thunder Bay and E. Canada corridors.
- Network fluidity improved overnight, led by a decline in idle car counts on CN by 33% (-238) offset by an increase in idle car counts on CP by 1% (+5). The total count of cars for 4+ days on both railways decreased for the third consecutive day, down 8% (-56) overnight - currently at 611 cars.
- One day in Week 36 unloads now ahead of prior week's performance by 350 unloads, reflecting improved week over week performance across all three major ports - Vancouver, Thunder Bay and Prince Rupert.

---

## Loads on Wheels

- Loads on wheels increased 5% (+495) overnight, due to higher traffic on both CN and CP - combined total at 10,041 and 5% below the trailing 30-day average.
- On a net basis, the rise in loads on wheels indicates higher traffic in the Vancouver, Prince Rupert and USA/MEX corridors offset by lower volumes in the Thunder Bay and E. Canada corridors.
- CN volumes increased 2% (+119) overnight, with higher volumes in the Vancouver, Prince Rupert and USA/MEX corridors offset by lower volumes in the Thunder Bay and E. Canada corridors. System wide CN loads on wheels currently at 5,463 and 6% below the trailing 30-day average.
- CP volumes increased significantly by 10% (+384) overnight, driven by a rise in volumes in the Vancouver and E. Canada corridors offset by a decline in volumes in the USA/MEX and Thunder Bay corridors. CP system wide loads on wheels currently at 4,171 and 6% below the trailing 30-day average.
- Vancouver currently at 5,927, rose significantly by 15% (+771) overnight, now 2% below the trailing 30-day average.
- The Prince Rupert pipeline currently at 1,473, gained 5% (+75) overnight and have now increased for the fourth consecutive day, and 14% below the trailing 30-day average.
- Thunder Bay volumes decreased significantly by 26% (-230) overnight - currently at 661 and 92% above the trailing 30-day average, with 42% of traffic moving on CP.

## Hopper Car Rationing

- CN rationed 894 hopper cars in week 34.

## Loads Not Moving

- **The count of cars not moving for 48+ hours declined 17% (-233) overnight, reflecting lower counts on CN offset by higher counts on CP. Idle car counts now at 1,177, the lowest seen in the last 30 days, and 60% below the trailing 30-day average.**
- CN
  - **The count of idle cars for 48+ hours declined for the third consecutive day, down 33% (-238) overnight - currently at 487 cars, the lowest seen in the last 30 days.**
  - The number of cars idle for 4+ days declined 40% (-149) overnight - currently at 223 cars, the lowest seen in the last 30 days.
  - The count of cars not moving for 7+ days decreased for the third consecutive day, down 52% (-37) overnight - currently at 34 cars, the lowest seen in the last 30 days.
  - Vancouver represents 17% of all idle cars.
  - In total 25% of all idle cars are dwelling at origin locations.
- CP

- **CP idle car counts for 48+ hours increased marginally by 1% (+5) overnight - now at 690 cars.**
- The number of cars idle for 4+ days rose 32% (+94) overnight - currently at 388 cars.
- The number of cars idle for 7+ days increased significantly by 77% (+82) overnight - currently at 188 cars.
- Vancouver accounts for 47% of all idle cars.
- In total 56% of all idle cars are dwelling at origin locations.

### **Port Performance**

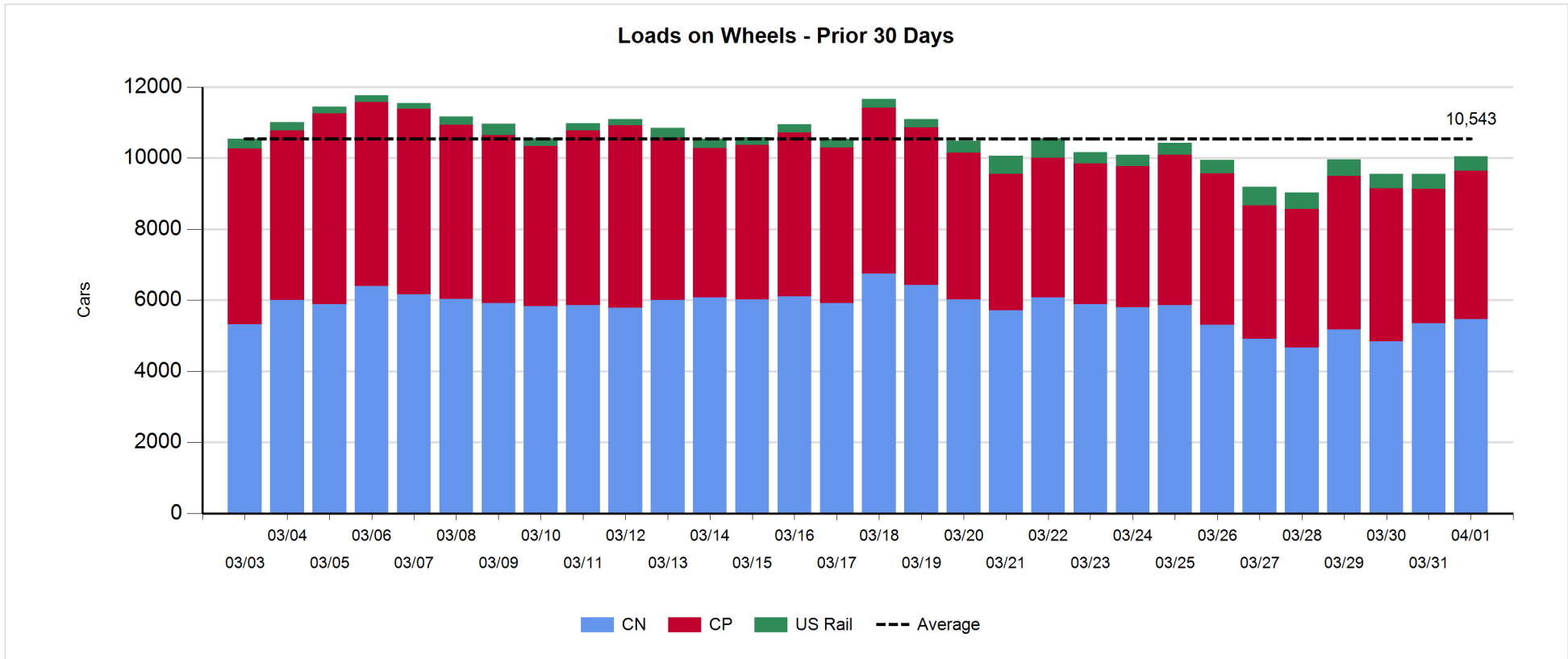
- CN and CP reported a total of 1,361 cars unloaded at the three major ports, the highest seen in the last 30 days, now 59% above the trailing 30-day average. One day in Week 36 unloads now ahead of last week's pace by 350 unloads, reflecting higher unloads across all three major ports - Vancouver, Thunder Bay and Prince Rupert.
- Vancouver
  - 923 unloads reported by CN and CP at the Port of Vancouver; CN - 430 and CP - 493. One day in Week 36 unloads are tracking ahead of last week's performance by 100 unloads.
  - There are about 800 cars on site at Vancouver with more than 400 cars arriving at the port in the last 24 hours.
  - CN and CP have more than 1,350 cars in British Columbia en route to Vancouver, with more than 750 cars at Kamloops and west, and 66% of traffic moving on CP.
- Prince Rupert
  - Prince Rupert reported 255 unloads, now ahead of last week's unloads after one day by around 200 unloads.
  - Loads on wheels now above 1,000 cars - currently at 1,473 cars.
  - There are around 550 cars west of Jasper en route to Prince Rupert.
  - There are 200 cars on site at Prince Rupert with 250 cars arriving at the port in the last 24 hours.
- Thunder Bay
  - 183 unloads, the highest seen in the last 30 days, were reported at Thunder Bay yesterday. One day in Week 36 unloads are tracking ahead of last week's pace by 50 unloads.
  - There are 250 cars on site at Thunder Bay with zero cars arriving at the port in the prior 24 hours.
  - There are 100 cars en route to Thunder Bay from Winnipeg and east.

**Daily Loads on Wheels - 4/1/2019**

	E Canada	Prince Rupert	Thunder Bay	USA/MEX	Vancouver	Total
CN	521	1,473	381	336	2,752	5,463
CP	439		280	331	3,121	4,171
Short Line	27				49	76
US Rail				326	5	331
	987	1,473	661	993	5,927	10,041

**Change in Loads on Wheels - Prior 24 Hours**

	E Canada	Prince Rupert	Thunder Bay	USA/MEX	Vancouver	Total
CN	-133	75	-191	67	301	119
CP	4		-39	-48	467	384
Short Line	-14				-2	-16
US Rail				3	5	8
	-143	75	-230	22	771	495

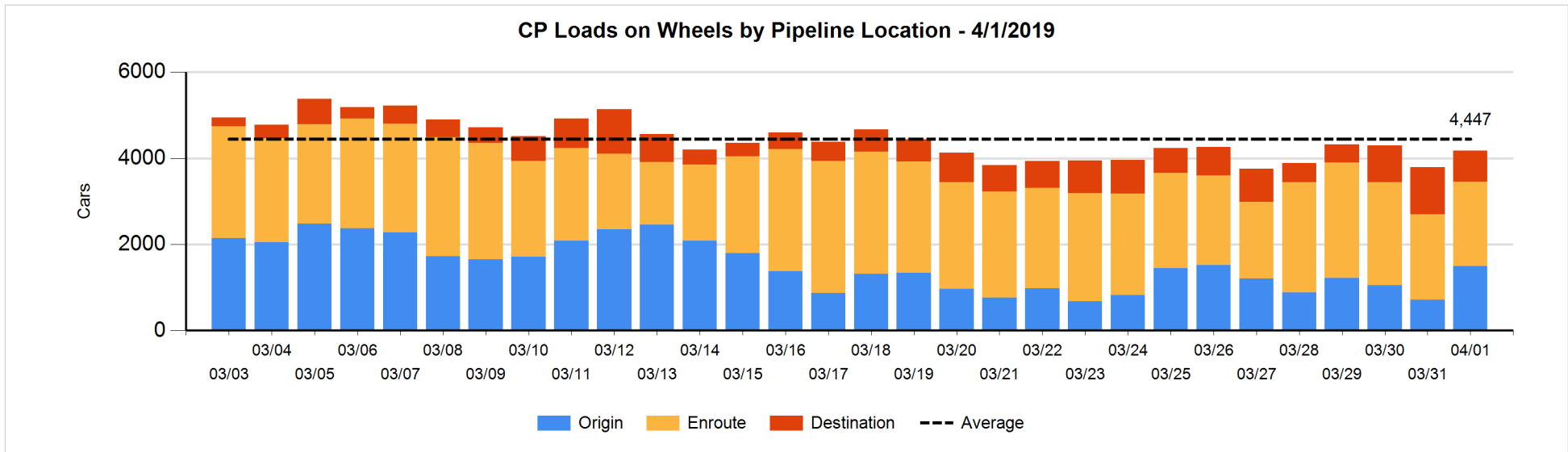
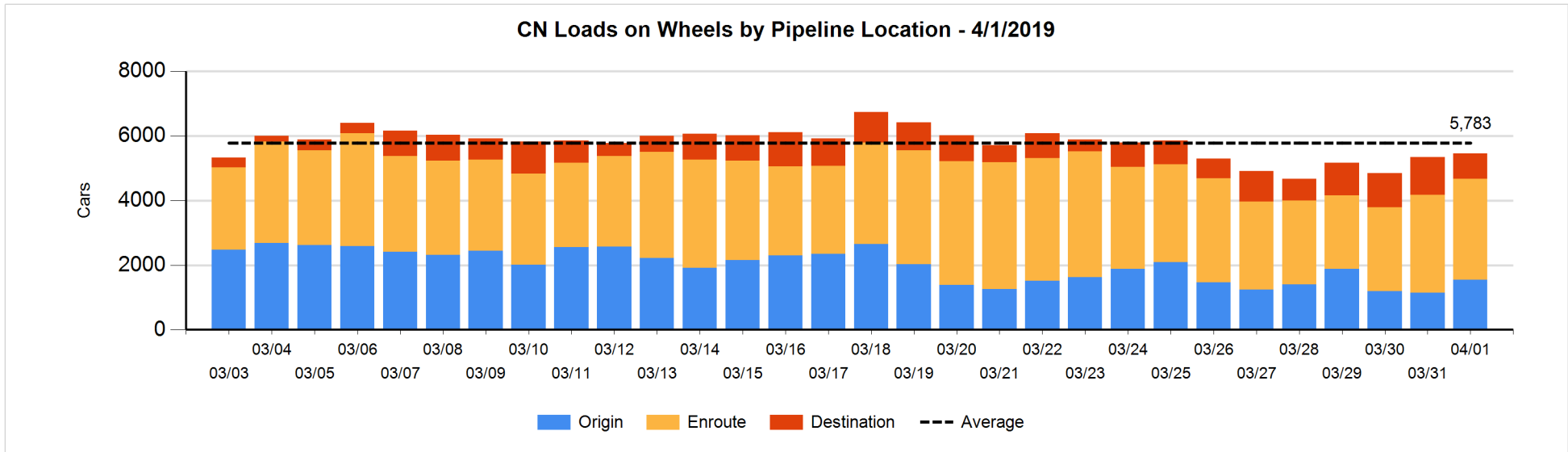


**Daily Loads on Wheels By Pipeline Location - 4/1/2019**

	E Canada	Prince Rupert	Thunder Bay	USA/MEX	Vancouver	Total
CN						
Origin	16	472	117	162	781	1,548
Enroute	280	795	167	134	1,743	3,119
Destination	225	206	97	40	228	796
	521	1,473	381	336	2,752	5,463
CP						
Origin	219		118	2	1,161	1,500
Enroute	213		1	291	1,454	1,959
Destination	7		161	38	506	712
	439		280	331	3,121	4,171
US Rail / Short Line						
Origin						
Enroute	2			298		300
Destination	25			28	54	107
	27			326	54	407

**Change in Daily Loads on Wheels By Pipeline Location - Prior 24 Hours**

	E Canada	Prince Rupert	Thunder Bay	USA/MEX	Vancouver	Total
CN						
Origin	-34	253	-98	112	178	411
Enroute	-92	-177	0	-20	365	76
Destination	-7	-1	-93	-25	-242	-368
	-133	75	-191	67	301	119
CP						
Origin	-13		51	1	748	787
Enroute	12		0	-39	-3	-30
Destination	5		-90	-10	-278	-373
	4		-39	-48	467	384
US Rail / Short Line						
Origin						
Enroute	0			22		22
Destination	-14			-19	3	-30
	-14			3	3	-8

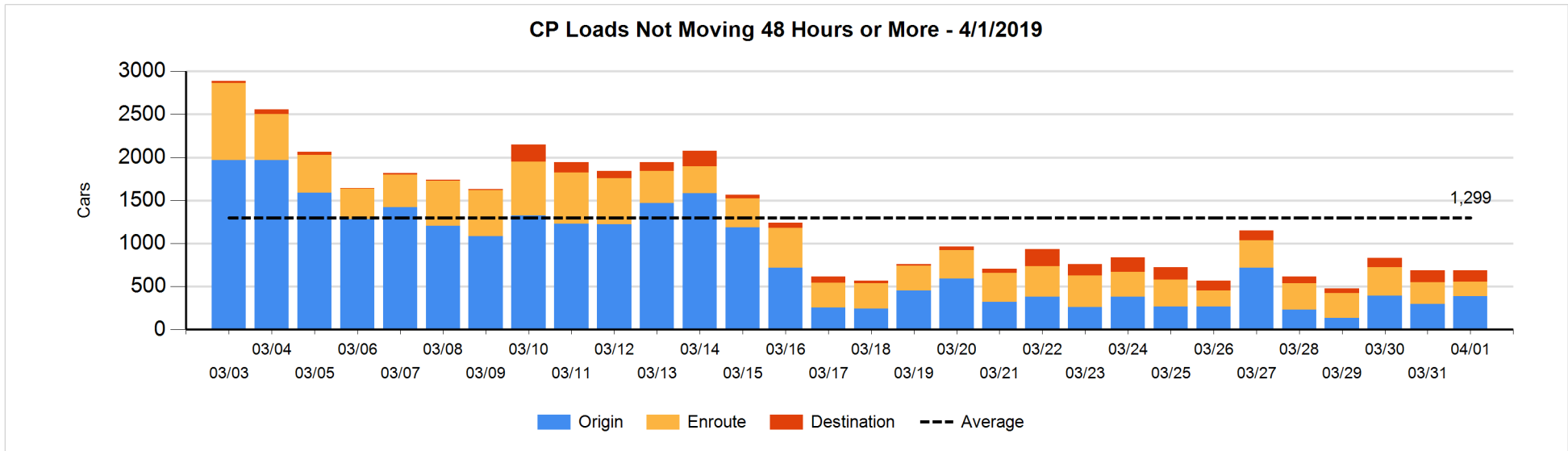
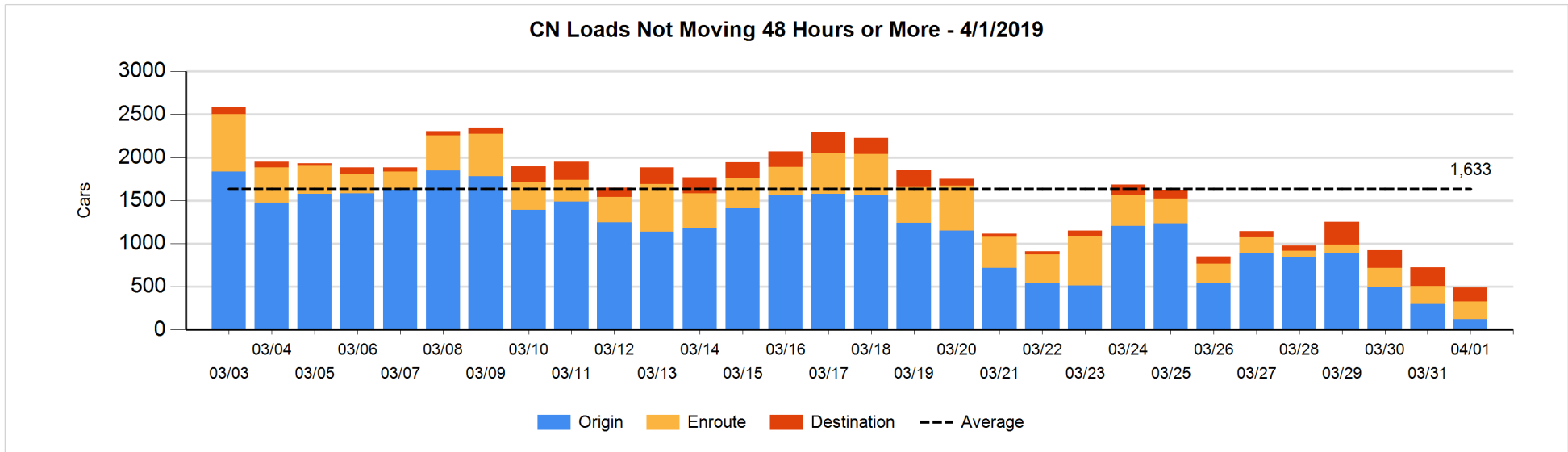


**Loads Not Moving 48 Hours or More - 4/1/2019**

	E Canada	Prince Rupert	Thunder Bay	USA/MEX	Vancouver	Total
CN						
Origin		104			16	120
Enroute	132	11	28	8	28	207
Destination	96	5	12	6	41	160
	228	120	40	14	85	487
CP						
Origin	215		67	1	103	386
Enroute	20		1	58	90	169
Destination	2				133	135
	237		68	59	326	690
US Rail / Short Line						
Origin						
Enroute				31		31
Destination	14			16	38	68
	14			47	38	99

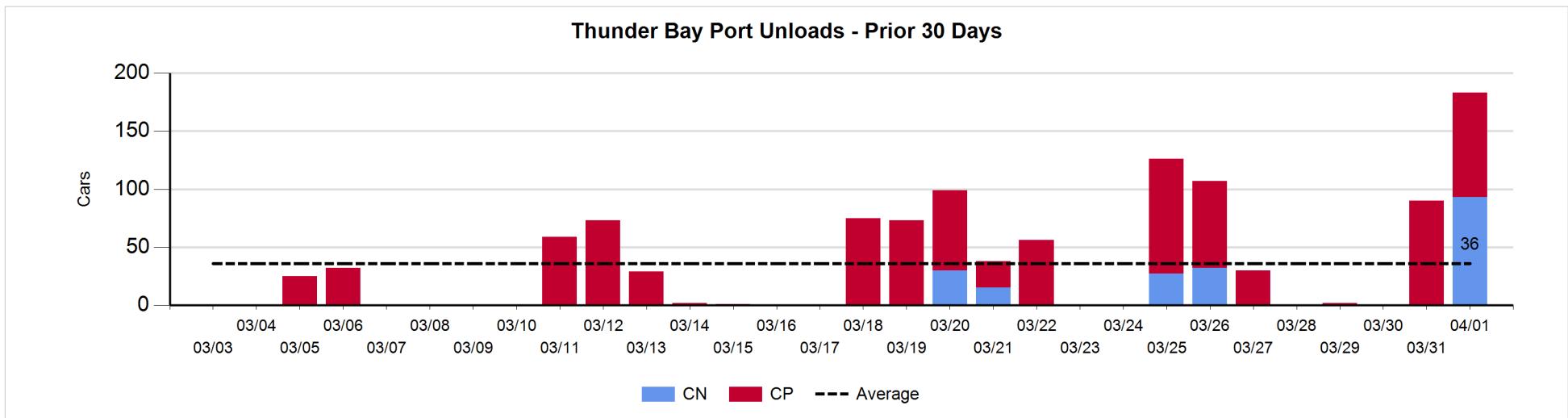
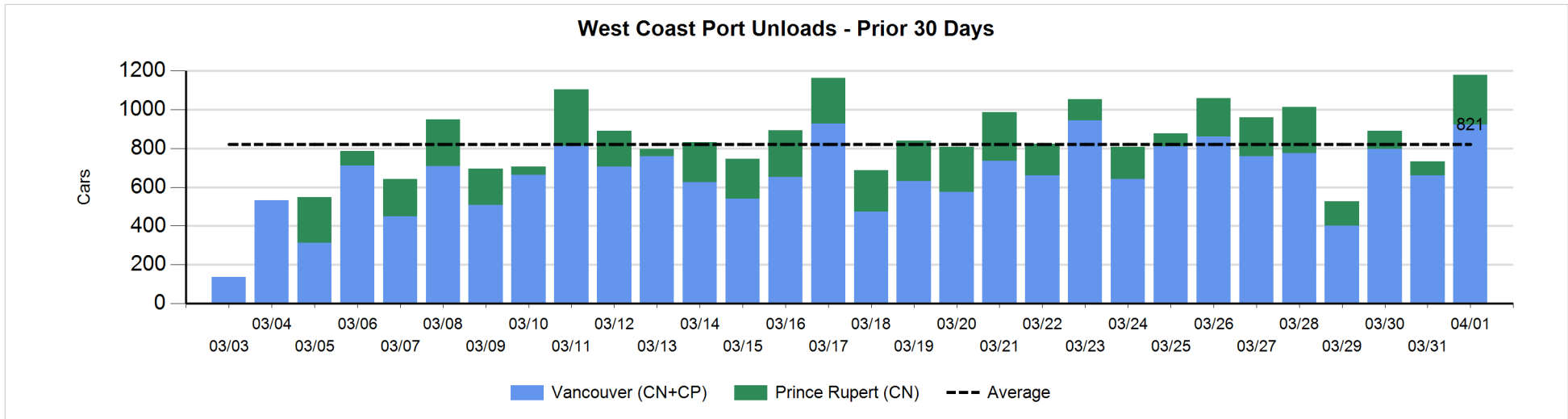
**Change in Loads Not Moving 48 Hours or More - 4/1/2019**

	E Canada	Prince Rupert	Thunder Bay	USA/MEX	Vancouver	Total
CN						
Origin		25	-99		-101	-175
Enroute	-58	-1	28	6	18	-7
Destination	23	-98	9	-2	12	-56
	-35	-74	-62	4	-71	-238
CP						
Origin	83		0	0	6	89
Enroute	-29		0	-46	-9	-84
Destination	1		-11		10	0
	55		-11	-46	7	5
US Rail / Short Line						
Origin						
Enroute				6		6
Destination	-25			-23	-2	-50
	-25			-17	-2	-44



Port Unloads - 4/1/2019

	Prince Rupert	Vancouver	West Coast Total	Thunder Bay	Total
CN	255	430	685	93	778
CP		493	493	90	583
	255	923	1,178	183	1,361





**Port Terminal Status**

**Vancouver**

Daily Activity for 4/1/2019

	Cars Arrived	Cars Received in Interchange	Cars Delivered in Interchange	Cars Placed for Unloading	Loads on Wheels at Destination As of 4/1/2019
CN	285	126		392	228
CP	129		135	277	506
SRY		3			49

**Port Unloads**

	04/01	03/31	Week To Date	Last Week
CN	430	276	430	2,124
CP	493	383	493	2,937
SRY	6	1	6	101

**Age Profile of Loaded Cars Waiting Placement for Unloading**

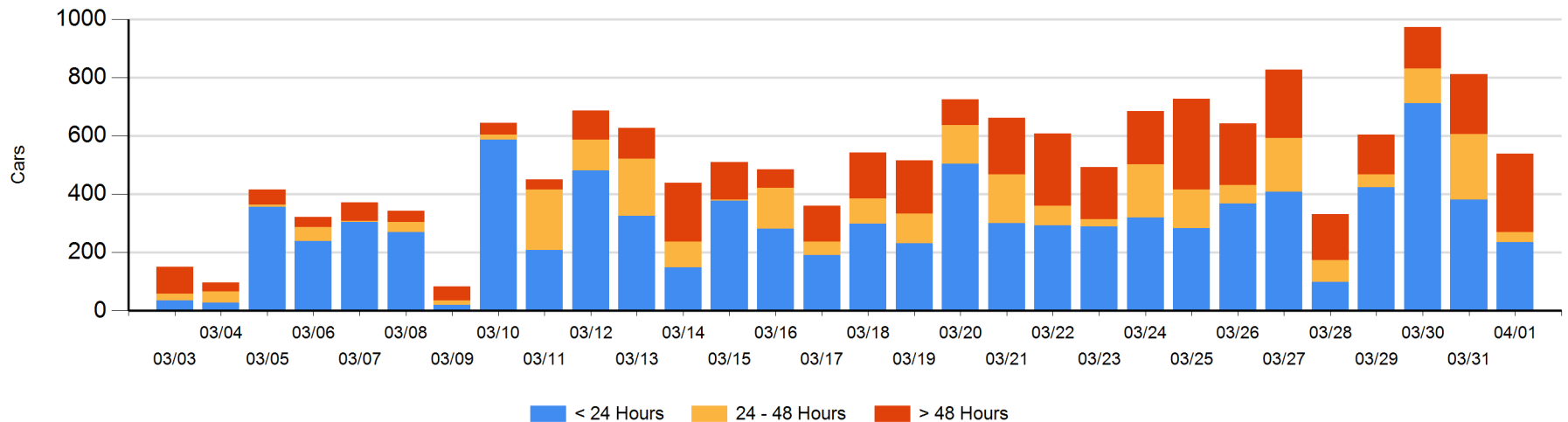
**Today**

	< 24 Hrs	24 - 48 Hrs	> 48-72 Hrs	> 72 Hrs	Total On Hand
CN	107		37	27	171
CP	129	34	60	145	368
SRY					0

**Change in Last 24 Hours**

	< 24 Hrs	24-48 Hrs	48 - 72 Hrs	> 72 Hrs
CN	63	-126	18	18
CP	-209	-65	-14	42
SRY				

**Loaded Cars on Hand Vancouver Waiting for Placement - Last 30 Days All Railways**



**Port Terminal Status**

**Prince Rupert**

Daily Activity for 4/1/2019

	Cars Arrived	Cars Received in Interchange	Cars Delivered in Interchange	Cars Placed for Unloading	Loads on Wheels at Destination As of 4/1/2019
CN	254			254	206

**Port Unloads**

	04/01	03/31	Week To Date	Last Week
CN	255	73	255	995

**Age Profile of Loaded Cars Waiting Placement for Unloading**

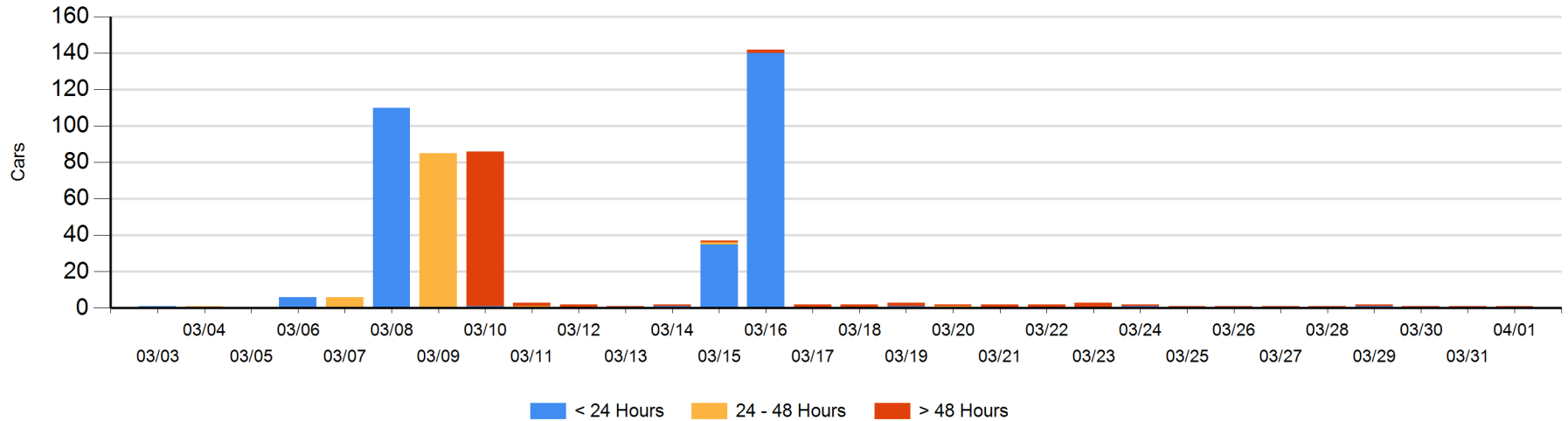
**Today**

	< 24 Hrs	24 - 48 Hrs	> 48-72 Hrs	> 72 Hrs	Total On Hand
CN				1	1

**Change in Last 24 Hours**

	< 24 Hrs	24-48 Hrs	48 - 72 Hrs	> 72 Hrs
CN				0

Loaded Cars on Hand Prince Rupert Waiting for Placement - Last 30 Days All Railways



**Port Terminal Status**

**Thunder Bay**

Daily Activity for 4/1/2019

	Cars Arrived	Cars Received in Interchange	Cars Delivered in Interchange	Cars Placed for Unloading	Loads on Wheels at Destination As of 4/1/2019
CN				87	97
CP				98	161

**Port Unloads**

	04/01	03/31	Week To Date	Last Week
CN	93		93	59
CP	90	90	90	296

**Age Profile of Loaded Cars Waiting Placement for Unloading**

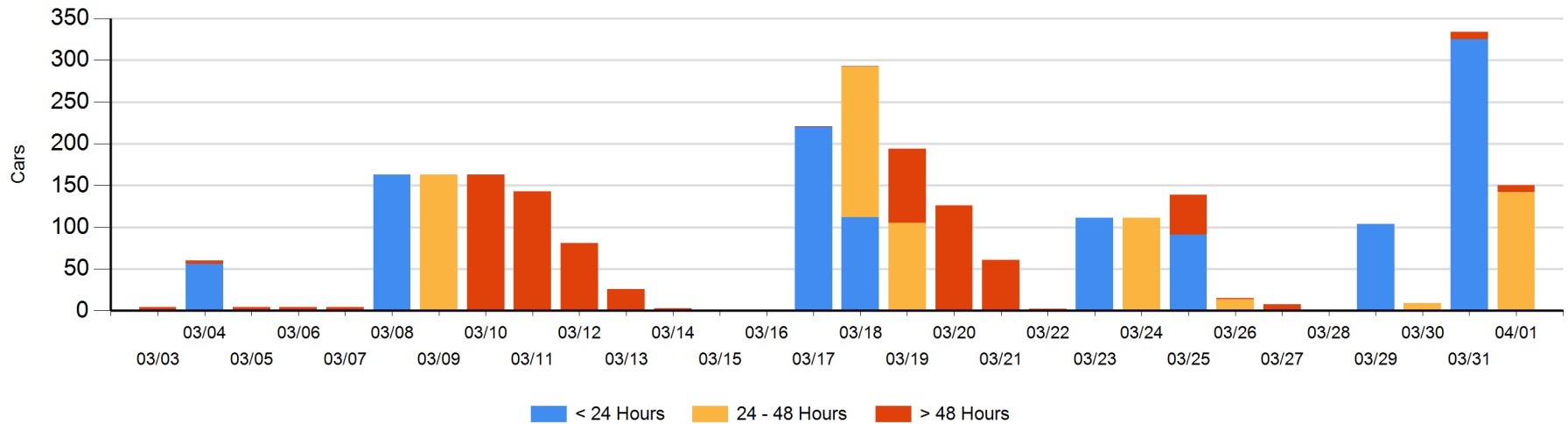
**Today**

	< 24 Hrs	24 - 48 Hrs	> 48-72 Hrs	> 72 Hrs	Total On Hand
CN					0
CP		142		8	150

**Change in Last 24 Hours**

	< 24 Hrs	24-48 Hrs	48 - 72 Hrs	> 72 Hrs
CN	-85		-2	
CP	-240	142	-7	8

**Loaded Cars on Hand Thunder Bay Waiting for Placement - Last 30 Days All Railways**



## Measurement Definitions

Loads on Wheels	<p>Count of loaded rail cars including all rail cars that have been released loaded at origin and have not been reported by the railway as unloaded at destination.</p> <p>Counts include all rail cars (hopper cars and boxcars) moving within a pipeline.</p>
Loads Not Moving	<p>Loaded rail cars for which the railways have not reported a movement event for 48 hours or more whether the rail car is at origin, enroute or at destination.</p>
Port Unloads	<p>Count of rail cars reported by railways as unloaded at the western port destinations of Vancouver, Prince Rupert and Thunder Bay.</p> <p>Unload counts include all rail cars (hopper cars and boxcars) unloaded by all receivers including major port terminals, transloaders and other receivers.</p>
Cars Arrived	<p>Count of rail cars reported as arrived at the destination railway terminal.</p>
Cars Received in Interchange	<p>Count of rail cars received in interchange by each railway within a destination railway terminal. Interchange activity is tracked for the Vancouver and Thunder Bay pipelines as applicable.</p>
Cars Delivered in Interchange	<p>Count of rail cars delivered in interchange by each railway within a destination railway terminal. Interchange activity is tracked for the Vancouver and Thunder Bay pipelines as applicable.</p>
Cars Placed for Unloading	<p>Count of rail cars reported by the railways as placed loaded at the receiver's facility for unloading.</p>
Loads on Wheels at Destination	<p>Count of rail cars that remain under load within the destination railway terminal including rail cars that have been reported as placed for unloading but not yet reported as unloaded.</p>
Waiting Placement for Unloading	<p>Count of rail cars that have been reported as arrived at the destination railway terminal but not reported as placed for unloading by the railway.</p> <p>For the Ports of Vancouver, Prince Rupert and Thunder Bay the count of rail cars waiting placement for unloading is categorized by age – i.e. the elapsed time from arrival at destination to the current report date.</p>