

SPEED READ

- Loads on wheels decreased overnight, reflecting a decline in both CN and CP volumes. On a net basis, volumes declined due to lower traffic across all corridors other than Thunder Bay.
- Network fluidity deteriorated overnight, led by a rise in idle car counts on both CN and CP by 16% (+111) and 28% (+148), respectively. The total count of cars for 4+ days on both railways decreased for the fifth consecutive day, down 15% (-81) overnight - now at 448 cars, the lowest seen in the last 30 days.
- Three days in Week 36 unloads now ahead of prior week's performance by more than 200 unloads, reflecting improved week over week performance at Prince Rupert and Thunder Bay offset by reduced unloads at Vancouver.

Loads on Wheels

- Loads on wheels fell 3% (-287) overnight, due to lower traffic on both CN and CP - combined total at 9,242 and 12% below the trailing 30-day average.
- On a net basis, the decline in loads on wheels reflects lower traffic across all corridors other than Thunder Bay.
- CN volumes fell 2% (-121) overnight, with reduced traffic in the Vancouver, Prince Rupert and E. Canada corridors offset by higher traffic in the Thunder Bay and USA/MEX corridors. System wide CN loads on wheels currently at 5,365 and 7% below the trailing 30-day average.
- CP volumes declined 4% (-157) overnight, driven by a decline in volumes across all corridors other than Thunder Bay. CP system wide loads on wheels currently at 3,498, the lowest seen in the last 30 days, and 20% below the trailing 30-day average.
- Vancouver now at 5,633, declined 4% (-220) overnight, now 6% below the trailing 30-day average.
- The Prince Rupert pipeline currently at 1,200, the lowest seen in the last 30 days, declined 6% (-76) overnight, and 29% below the trailing 30-day average.
- Thunder Bay volumes increased significantly by 23% (+121) overnight - now at 644 and 72% above the trailing 30-day average, with 39% of traffic moving on CP.

Hopper Car Rationing

- CN rationed 894 hopper cars in week 34.

Loads Not Moving

- **The count of cars not moving for 48+ hours increased 21% (+259) overnight, marking higher counts on both CN and CP. Idle car counts now at 1,472 and 45% below the trailing 30-day average.**
- CN
 - **The count of idle cars for 48+ hours rose 16% (+111) overnight - now at 798 cars.**
 - The number of cars idle for 4+ days declined for the third consecutive day, down 29% (-55) overnight - now at 134 cars, the lowest seen in the last 30 days.
 - The count of cars not moving for 7+ days fell 3% (-1) overnight and have now decreased for the fifth consecutive day - now at 32 cars, the lowest seen in the last 30 days.
 - Vancouver represents 45% of all idle cars.
 - In total 59% of all idle cars are dwelling at origin locations.
- CP
 - **CP idle car counts for 48+ hours increased 28% (+148) overnight - currently at 674 cars.**
 - The number of cars idle for 4+ days fell 8% (-26) overnight - now at 314 cars.

- The number of cars idle for 7+ days declined significantly by 54% (-83) overnight - now at 71 cars, the lowest seen in the last 30 days.
- Vancouver accounts for 65% of all idle cars.
- In total 66% of all idle cars are dwelling at origin locations.

Port Performance

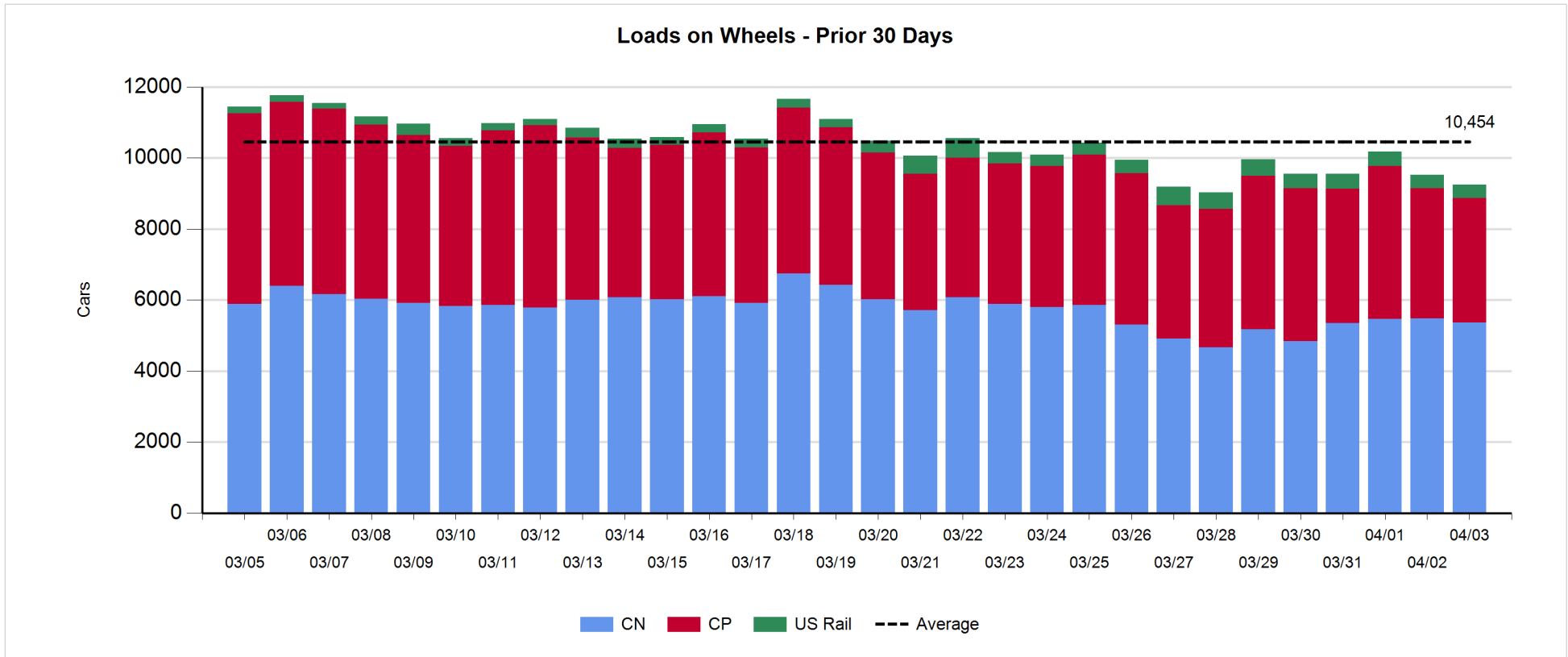
- CN and CP reported a total of 980 cars unloaded at the three major ports, now 8% above the trailing 30-day average. Three days in Week 36 unloads now ahead of last week's pace by more than 200 unloads, reflecting higher unloads at Prince Rupert and Thunder Bay offset by reduced unloads at Vancouver.
- Vancouver
 - 653 unloads reported by CN and CP at the Port of Vancouver; CN - 238 and CP - 415. Three days in Week 36 unloads are tracking behind last week's performance by 150 unloads.
 - There are 700 cars on site at Vancouver with 600 cars arriving at the port in the last 24 hours.
 - CN and CP have 1,750 cars in British Columbia en route to Vancouver, with 450 cars at Kamloops and west, and 54% of traffic moving on CP.
- Prince Rupert
 - Prince Rupert reported 234 unloads, now ahead of last week's unloads after three days by more than 200 unloads.
 - Loads on wheels now above 1,000 cars - currently at 1,200 cars.
 - There are more than 400 cars west of Jasper en route to Prince Rupert.
 - There are 200 cars on site at Prince Rupert with more than 150 cars arriving at the port in the last 24 hours.
- Thunder Bay
 - 93 unloads were reported at Thunder Bay yesterday. Three days in Week 36 unloads are tracking ahead of last week's pace by 150 unloads.
 - There are more than 100 cars on site at Thunder Bay with 100 cars arriving at the port in the prior 24 hours.
 - There are 100 cars en route to Thunder Bay from Winnipeg and east.

Daily Loads on Wheels - 4/3/2019

	E Canada	Prince Rupert	Thunder Bay	USA/MEX	Vancouver	Total
CN	491	1,200	395	386	2,893	5,365
CP	346		249	201	2,702	3,498
Short Line	10				38	48
US Rail				331		331
	847	1,200	644	918	5,633	9,242

Change in Loads on Wheels - Prior 24 Hours

	E Canada	Prince Rupert	Thunder Bay	USA/MEX	Vancouver	Total
CN	-32	-76	61	53	-127	-121
CP	-62		60	-57	-98	-157
Short Line	-4				10	6
US Rail				-10	-5	-15
	-98	-76	121	-14	-220	-287



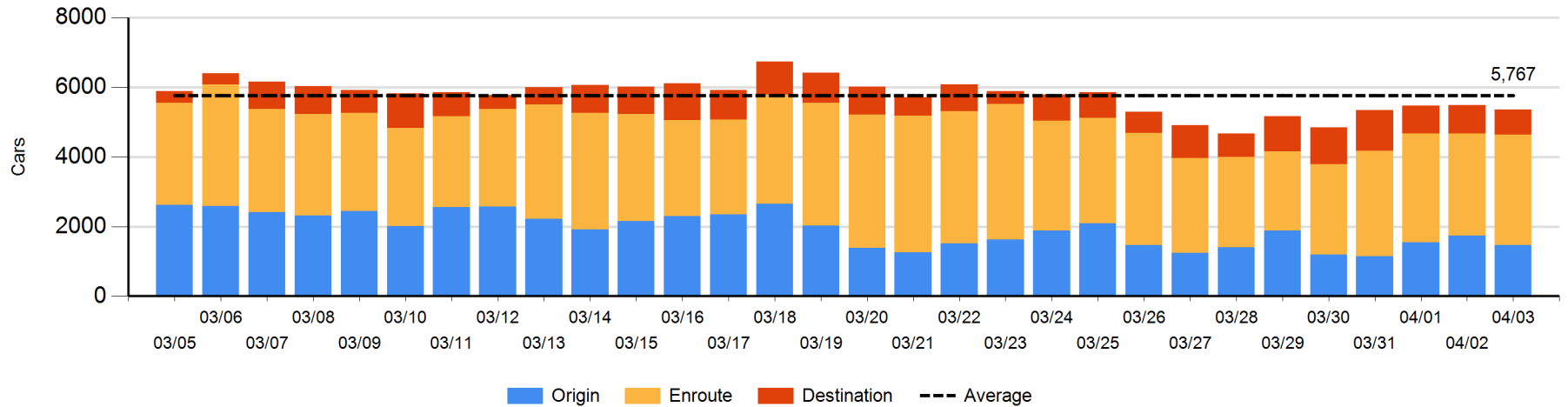
Daily Loads on Wheels By Pipeline Location - 4/3/2019

	E Canada	Prince Rupert	Thunder Bay	USA/MEX	Vancouver	Total
CN						
Origin	97	250	102	189	828	1,466
Enroute	256	743	199	177	1,802	3,177
Destination	138	207	94	20	263	722
	491	1,200	395	386	2,893	5,365
CP						
Origin	134		168	3	536	841
Enroute	161		62	133	1,764	2,120
Destination	51		19	65	402	537
	346		249	201	2,702	3,498
US Rail / Short Line						
Origin						
Enroute	3			198		201
Destination	7			133	38	178
	10			331	38	379

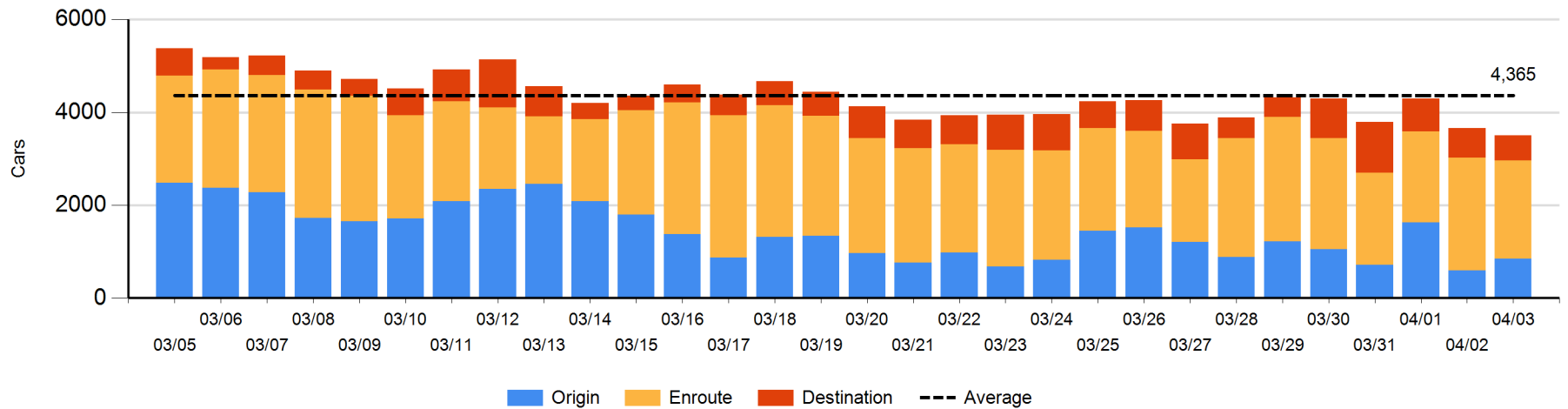
Change in Daily Loads on Wheels By Pipeline Location - Prior 24 Hours

	E Canada	Prince Rupert	Thunder Bay	USA/MEX	Vancouver	Total
CN						
Origin	-3	-106	-23	24	-157	-265
Enroute	-25	96	32	44	91	238
Destination	-4	-66	52	-15	-61	-94
	-32	-76	61	53	-127	-121
CP						
Origin	31		50	2	167	250
Enroute	-30		61	-52	-288	-309
Destination	-63		-51	-7	23	-98
	-62		60	-57	-98	-157
US Rail / Short Line						
Origin						
Enroute	0			-62		-62
Destination	-4			52	5	53
	-4			-10	5	-9

CN Loads on Wheels by Pipeline Location - 4/3/2019



CP Loads on Wheels by Pipeline Location - 4/3/2019

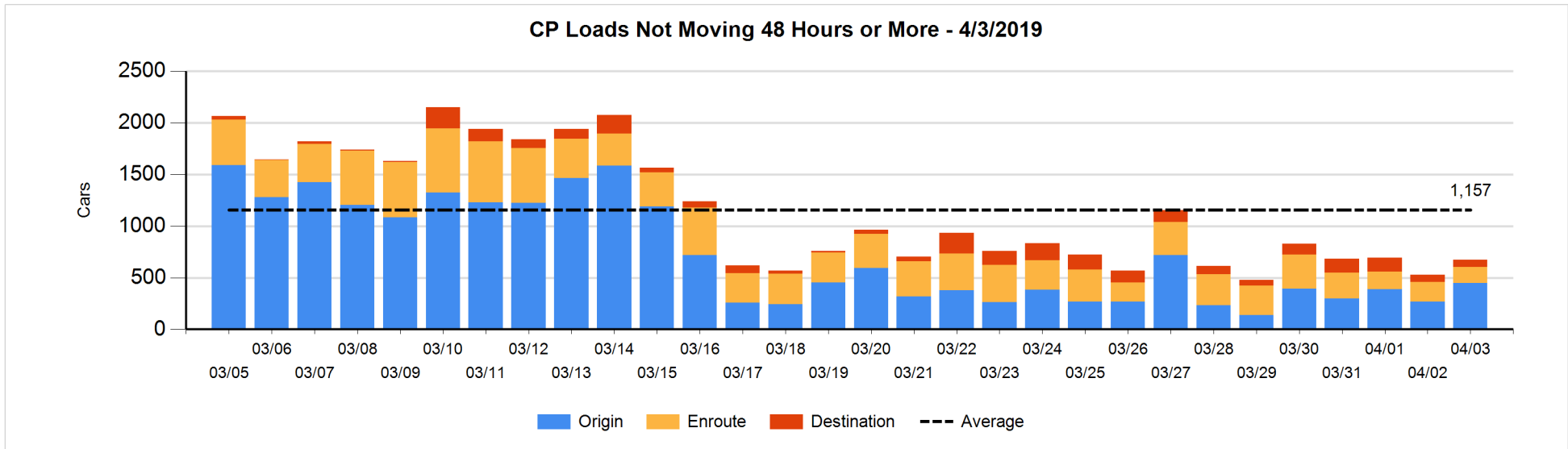
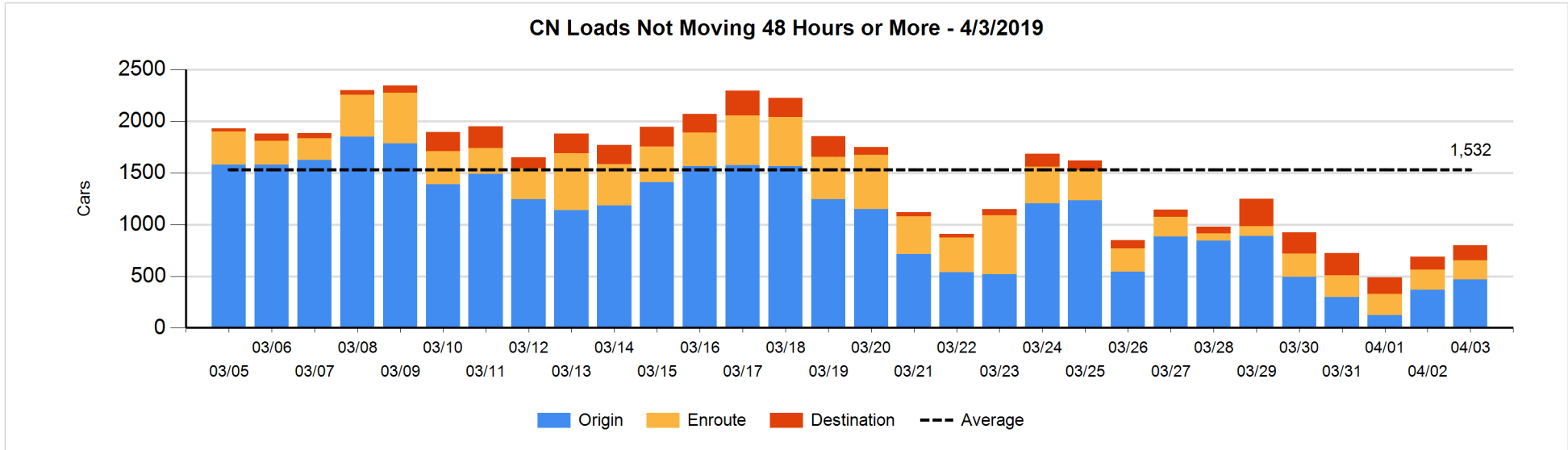


Loads Not Moving 48 Hours or More - 4/3/2019

	E Canada	Prince Rupert	Thunder Bay	USA/MEX	Vancouver	Total
CN						
Origin		102		111	255	468
Enroute	80	47		3	57	187
Destination	78	4	1	9	51	143
	158	153	1	123	363	798
CP						
Origin	103		56	1	288	448
Enroute	11			52	90	153
Destination	2		6	2	63	73
	116		62	55	441	674
US Rail / Short Line						
Origin						
Enroute				26		26
Destination				16	16	32
				42	16	58

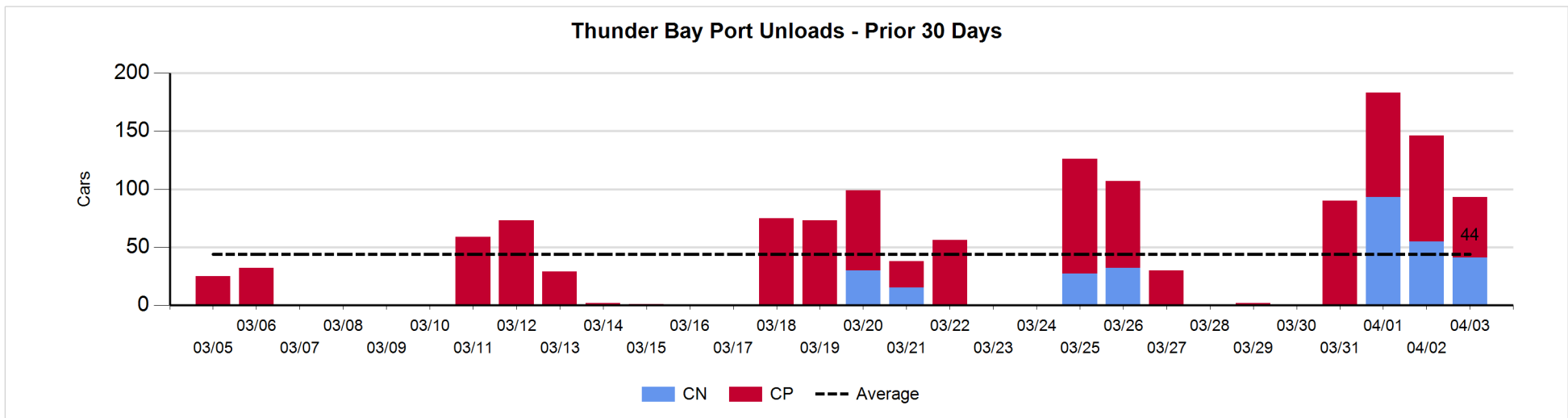
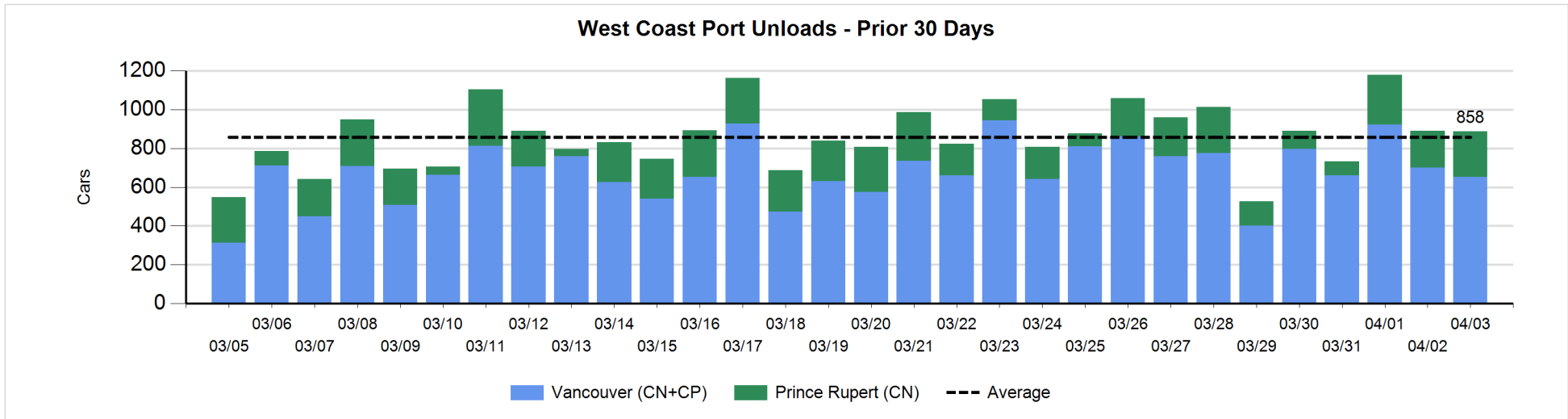
Change in Loads Not Moving 48 Hours or More - 4/3/2019

	E Canada	Prince Rupert	Thunder Bay	USA/MEX	Vancouver	Total
CN						
Origin		66	-116	61	89	100
Enroute	-15	37	-28	-9	8	-7
Destination	18	-1	0	3	-2	18
	3	102	-144	55	95	111
CP						
Origin	3		-11	0	188	180
Enroute	4		-1	-13	-26	-36
Destination	1		6	-1	-2	4
	8		-6	-14	160	148
US Rail / Short Line						
Origin						
Enroute				-10		-10
Destination				2	-8	-6
				-8	-8	-16



Port Unloads - 4/3/2019

	Prince Rupert	Vancouver	West Coast Total	Thunder Bay	Total
CN	234	238	472	41	513
CP		415	415	52	467
	234	653	887	93	980



Port Terminal Status

Vancouver

Daily Activity for 4/3/2019

	Cars Arrived	Cars Received in Interchange	Cars Delivered in Interchange	Cars Placed for Unloading	Loads on Wheels at Destination As of 4/3/2019
CN	109	111	167	248	263
CP	493	166	126	411	402
SRY		16		6	38

Port Unloads

	04/03	04/02	Week To Date	Last Week
CN	238	249	917	2,124
CP	415	452	1,360	2,937
SRY	6	25	37	101

Age Profile of Loaded Cars Waiting Placement for Unloading

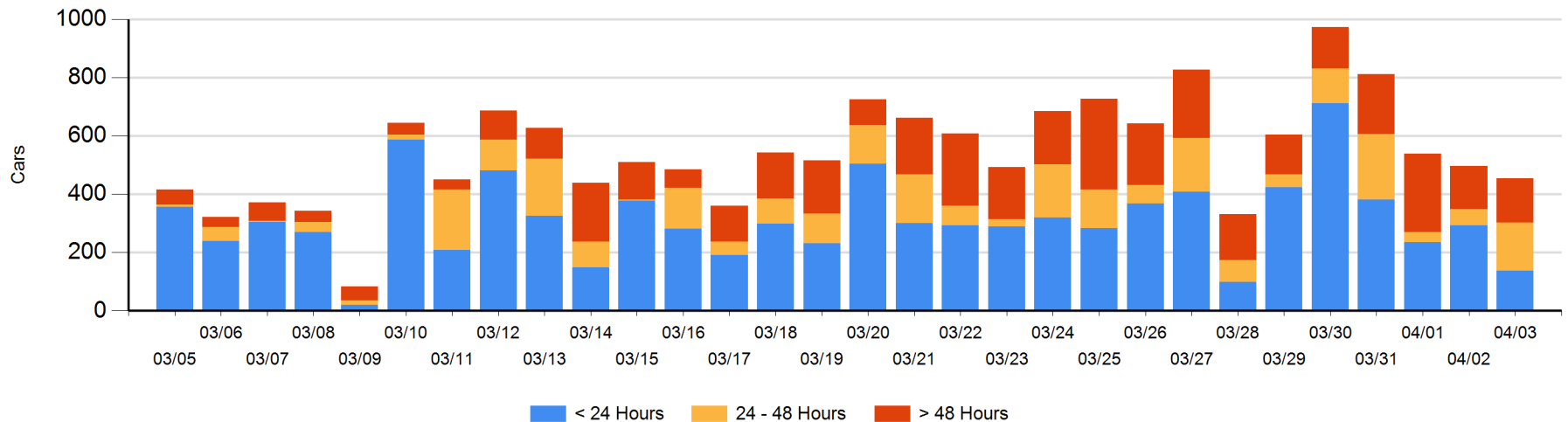
Today

	< 24 Hrs	24 - 48 Hrs	> 48-72 Hrs	> 72 Hrs	Total On Hand
CN	22	70		26	118
CP	115	95	22	104	336
SRY					0

Change in Last 24 Hours

	< 24 Hrs	24-48 Hrs	48 - 72 Hrs	> 72 Hrs
CN	-43	47		-6
CP	-113	63	19	-10
SRY				

Loaded Cars on Hand Vancouver Waiting for Placement - Last 30 Days All Railways



Port Terminal Status

Prince Rupert

Daily Activity for 4/3/2019

	Cars Arrived	Cars Received in Interchange	Cars Delivered in Interchange	Cars Placed for Unloading	Loads on Wheels at Destination As of 4/3/2019
CN	169			169	207

Port Unloads

	04/03	04/02	Week To Date	Last Week
CN	234	188	677	995

Age Profile of Loaded Cars Waiting Placement for Unloading

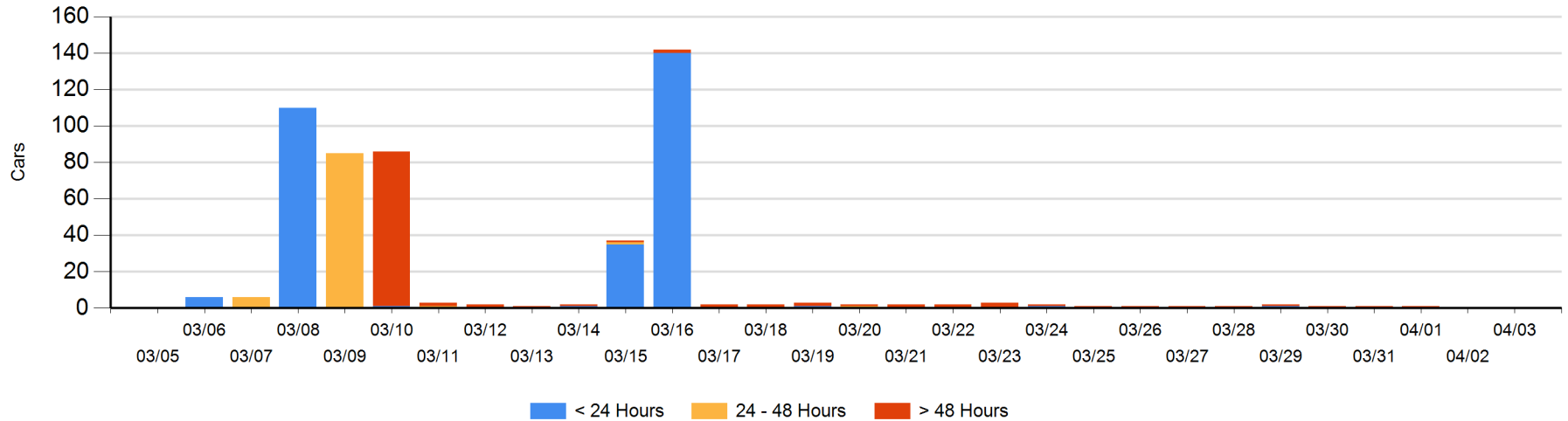
Today

	< 24 Hrs	24 - 48 Hrs	> 48-72 Hrs	> 72 Hrs	Total On Hand
CN					0

Change in Last 24 Hours

	< 24 Hrs	24-48 Hrs	48 - 72 Hrs	> 72 Hrs
CN				

Loaded Cars on Hand Prince Rupert Waiting for Placement - Last 30 Days All Railways



Port Terminal Status

Thunder Bay

Daily Activity for 4/3/2019

	Cars Arrived	Cars Received in Interchange	Cars Delivered in Interchange	Cars Placed for Unloading	Loads on Wheels at Destination As of 4/3/2019
CN	93			43	94
CP	1			10	19

Port Unloads

	04/03	04/02	Week To Date	Last Week
CN	41	55	189	59
CP	52	91	233	296

Age Profile of Loaded Cars Waiting Placement for Unloading

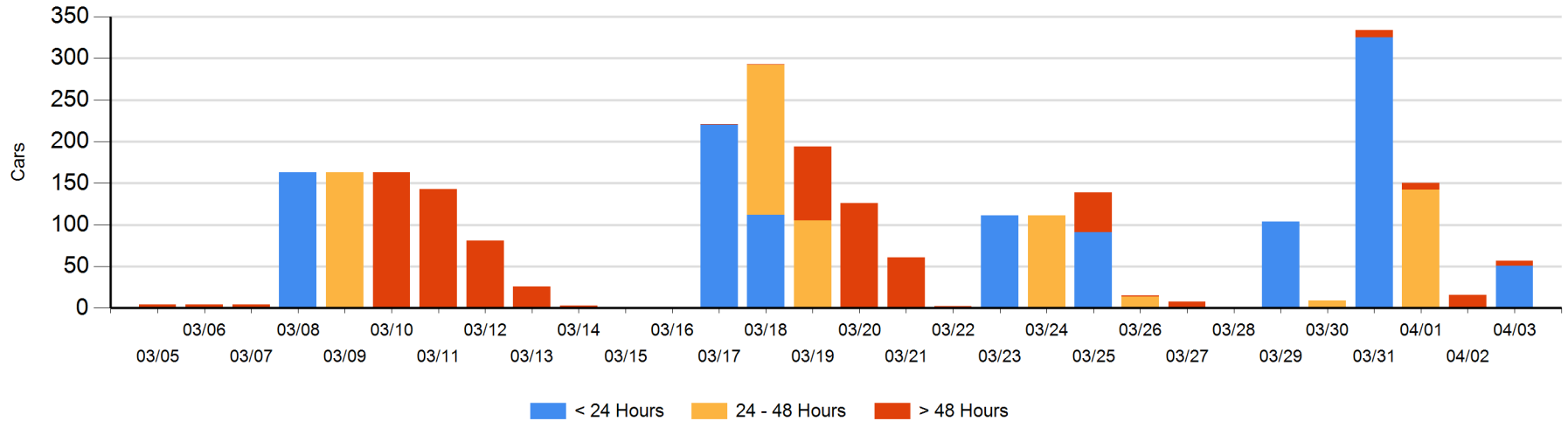
Today

	< 24 Hrs	24 - 48 Hrs	> 48-72 Hrs	> 72 Hrs	Total On Hand
CN	50				50
CP	1			6	7

Change in Last 24 Hours

	< 24 Hrs	24-48 Hrs	48 - 72 Hrs	> 72 Hrs
CN	50			
CP	1		-16	6

Loaded Cars on Hand Thunder Bay Waiting for Placement - Last 30 Days All Railways



Measurement Definitions

Loads on Wheels	<p>Count of loaded rail cars including all rail cars that have been released loaded at origin and have not been reported by the railway as unloaded at destination.</p> <p>Counts include all rail cars (hopper cars and boxcars) moving within a pipeline.</p>
Loads Not Moving	<p>Loaded rail cars for which the railways have not reported a movement event for 48 hours or more whether the rail car is at origin, enroute or at destination.</p>
Port Unloads	<p>Count of rail cars reported by railways as unloaded at the western port destinations of Vancouver, Prince Rupert and Thunder Bay.</p> <p>Unload counts include all rail cars (hopper cars and boxcars) unloaded by all receivers including major port terminals, transloaders and other receivers.</p>
Cars Arrived	<p>Count of rail cars reported as arrived at the destination railway terminal.</p>
Cars Received in Interchange	<p>Count of rail cars received in interchange by each railway within a destination railway terminal. Interchange activity is tracked for the Vancouver and Thunder Bay pipelines as applicable.</p>
Cars Delivered in Interchange	<p>Count of rail cars delivered in interchange by each railway within a destination railway terminal. Interchange activity is tracked for the Vancouver and Thunder Bay pipelines as applicable.</p>
Cars Placed for Unloading	<p>Count of rail cars reported by the railways as placed loaded at the receiver's facility for unloading.</p>
Loads on Wheels at Destination	<p>Count of rail cars that remain under load within the destination railway terminal including rail cars that have been reported as placed for unloading but not yet reported as unloaded.</p>
Waiting Placement for Unloading	<p>Count of rail cars that have been reported as arrived at the destination railway terminal but not reported as placed for unloading by the railway.</p> <p>For the Ports of Vancouver, Prince Rupert and Thunder Bay the count of rail cars waiting placement for unloading is categorized by age – i.e. the elapsed time from arrival at destination to the current report date.</p>