

## SPEED READ

- Loads on wheels increased overnight, reflecting a rise in both CN and CP volumes. On a net basis, volumes increased due to higher traffic in the Vancouver and E. Canada corridors offset by lower volumes in the USA/MEX, Thunder Bay and Prince Rupert corridors.
- Network fluidity improved overnight, led by a decline in idle car counts on both CN and CP by 0% (-2) and 38% (-236), respectively. The total count of cars for 4+ days on both railways declined for the sixth consecutive day, down 16% (-68) overnight - now at 354 cars, the lowest seen in the last 30 days.
- Four days in Week 36 unloads now behind prior week's performance by more than 100 unloads, reflecting lower unloads at Vancouver offset by improved week over week performance at Thunder Bay and Prince Rupert.

---

## Loads on Wheels

- Loads on wheels increased 2% (+170) overnight, due to higher traffic on both CN and CP - combined total at 9,449 and 9% below the trailing 30-day average.
- On a net basis, the increase in loads on wheels indicates higher volumes in the Vancouver and E. Canada corridors offset by lower volumes in the USA/MEX, Thunder Bay and Prince Rupert corridors.
- CN volumes gained 3% (+170) overnight, with higher volumes in the Vancouver and E. Canada corridors offset by reduced volumes in the Thunder Bay, Prince Rupert and USA/MEX corridors. System wide CN loads on wheels now at 5,565 and 3% below the trailing 30-day average.
- CP volumes increased 2% (+58) overnight, driven by an increase in traffic across all corridors other than Thunder Bay. CP system wide loads on wheels now at 3,563 and 17% below the trailing 30-day average.
- Vancouver now at 5,954, increased 6% (+314) overnight, now in line with the trailing 30-day average.
- The Prince Rupert pipeline now at 1,158, the lowest seen in the last 30 days, fell for the third consecutive day, down 4% (-42) overnight, and 30% below the trailing 30-day average.
- Thunder Bay volumes declined 7% (-45) overnight - currently at 599 and 54% above the trailing 30-day average, with 41% of traffic moving on CP.

## Hopper Car Rationing

- CN rationed 894 hopper cars in week 34.

## Loads Not Moving

- **The count of cars not moving for 48+ hours decreased 17% (-238) overnight, marking lower counts on both CN and CP. Idle car counts currently at 1,181 and 54% below the trailing 30-day average.**
- CN
  - **The count of idle cars for 48+ hours decreased slightly (-2) overnight - currently at 796 cars.**
  - The number of cars idle for 4+ days increased 37% (+49) overnight - now at 183 cars.
  - The count of cars not moving for 7+ days increased significantly by 88% (+28) overnight - currently at 60 cars.
  - Vancouver represents 44% of all idle cars.
  - In total 60% of all idle cars are dwelling at origin locations.
- CP
  - **CP idle car counts for 48+ hours declined 38% (-236) overnight - now at 385 cars, the lowest seen in the last 30 days.**
  - The number of cars idle for 4+ days declined for the third consecutive day, down 41% (-117) overnight - currently at 171 cars, the lowest seen in the last 30 days.

- The number of cars idle for 7+ days remained unchanged (0) overnight - now at 71 cars, the lowest seen in the last 30 days.
- Vancouver accounts for 68% of all idle cars.
- In total 43% of all idle cars are dwelling at origin locations.

### **Port Performance**

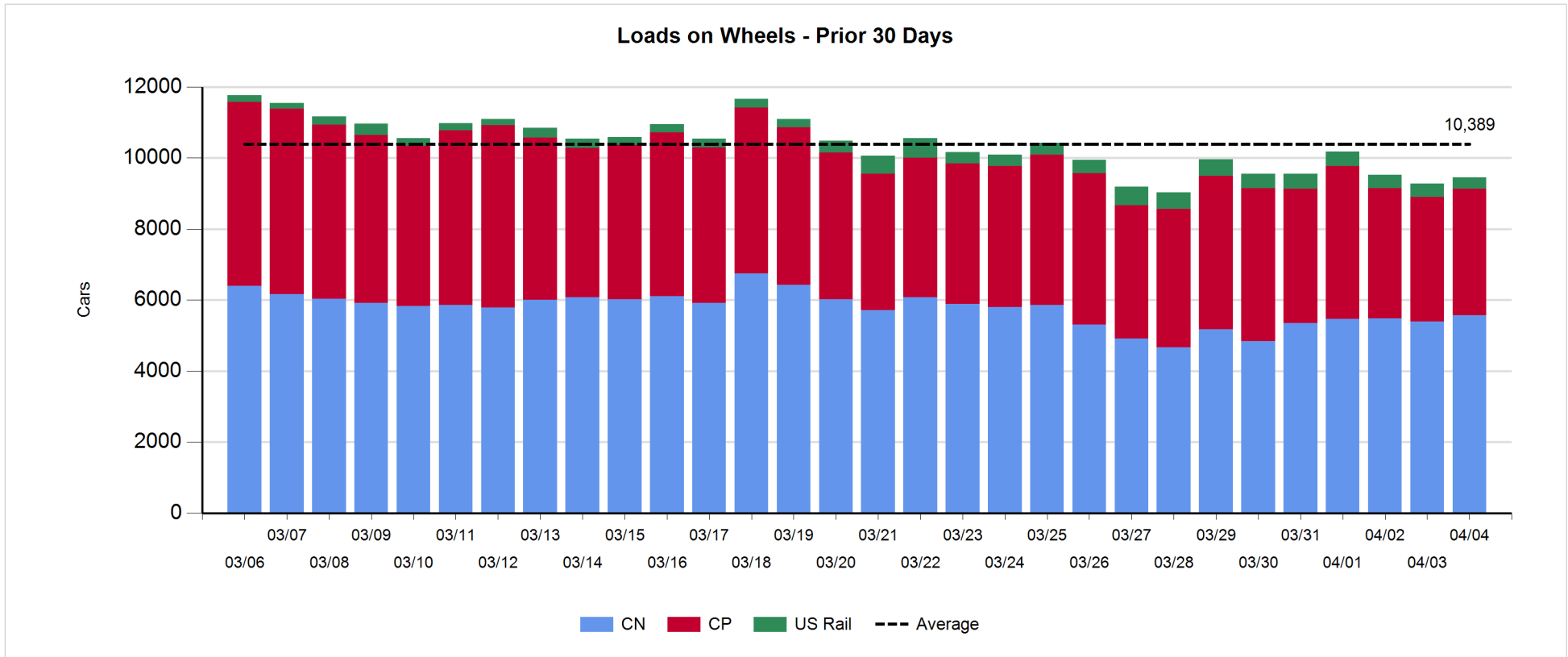
- CN and CP reported a total of 706 cars unloaded at the three major ports, now 22% below the trailing 30-day average. Four days in Week 36 unloads now behind last week's pace by more than 100 unloads, reflecting lower unloads at Vancouver offset by higher unloads at Thunder Bay and Prince Rupert.
- Vancouver
  - 507 unloads reported by CN and CP at the Port of Vancouver; CN - 173 and CP - 334. Four days in Week 36 unloads are tracking behind last week's performance by 450 unloads.
  - There are nearly 700 cars on site at Vancouver with more than 350 cars arriving at the port in the last 24 hours.
  - CN and CP have more than 2,450 cars in British Columbia en route to Vancouver, with more than 1,250 cars at Kamloops and west, and 51% of traffic moving on CN.
- Prince Rupert
  - Prince Rupert reported 154 unloads, now ahead of last week's unloads after four days by more than 100 unloads.
  - Loads on wheels now above 1,000 cars - now at 1,158 cars.
  - There are 300 cars west of Jasper en route to Prince Rupert.
  - There are 200 cars on site at Prince Rupert with 150 cars arriving at the port in the last 24 hours.
- Thunder Bay
  - 45 unloads were reported at Thunder Bay yesterday. Four days in Week 36 unloads are tracking ahead of last week's pace by 200 unloads.
  - There are 150 cars on site at Thunder Bay with less than 100 cars arriving at the port in the prior 24 hours.
  - There are more than 150 cars en route to Thunder Bay from Winnipeg and east.

**Daily Loads on Wheels - 4/4/2019**

	E Canada	Prince Rupert	Thunder Bay	USA/MEX	Vancouver	Total
CN	507	1,158	351	395	3,154	5,565
CP	348		248	204	2,763	3,563
Short Line	2				37	39
US Rail				282		282
	857	1,158	599	881	5,954	9,449

**Change in Loads on Wheels - Prior 24 Hours**

	E Canada	Prince Rupert	Thunder Bay	USA/MEX	Vancouver	Total
CN	16	-42	-44	-21	261	170
CP	2		-1	3	54	58
Short Line	-8				-1	-9
US Rail				-49		-49
	10	-42	-45	-67	314	170

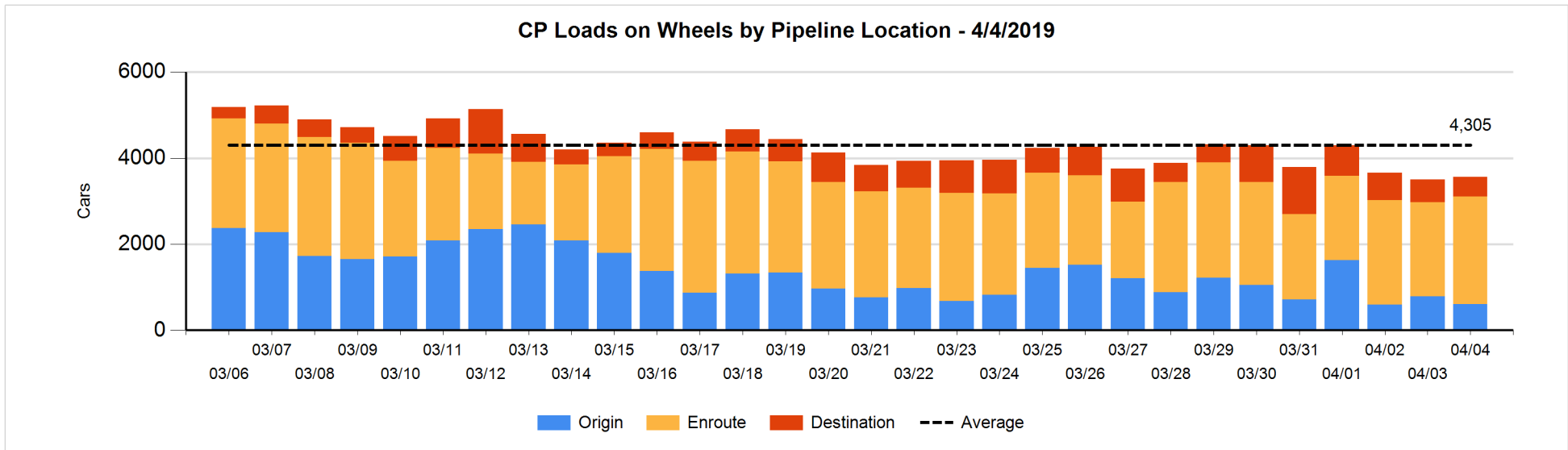
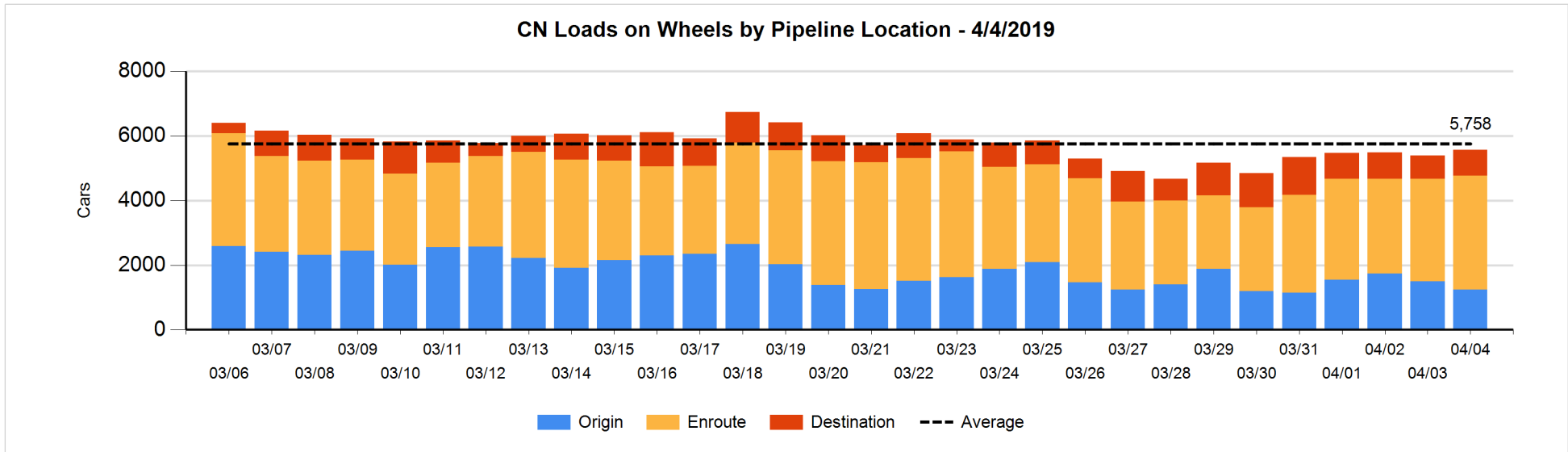


**Daily Loads on Wheels By Pipeline Location - 4/4/2019**

	E Canada	Prince Rupert	Thunder Bay	USA/MEX	Vancouver	Total
CN						
Origin	123	212		232	681	1,248
Enroute	200	741	269	154	2,153	3,517
Destination	184	205	82	9	320	800
	507	1,158	351	395	3,154	5,565
CP						
Origin	41		36	53	477	607
Enroute	289		143	105	1,958	2,495
Destination	18		69	46	328	461
	348		248	204	2,763	3,563
US Rail / Short Line						
Origin						
Enroute	2			179		181
Destination				103	37	140
	2			282	37	321

**Change in Daily Loads on Wheels By Pipeline Location - Prior 24 Hours**

	E Canada	Prince Rupert	Thunder Bay	USA/MEX	Vancouver	Total
CN						
Origin	26	-38	-102	13	-147	-248
Enroute	-56	-2	70	-23	351	340
Destination	46	-2	-12	-11	57	78
	16	-42	-44	-21	261	170
CP						
Origin	-93		-132	50	-6	-181
Enroute	128		81	-28	134	315
Destination	-33		50	-19	-74	-76
	2		-1	3	54	58
US Rail / Short Line						
Origin						
Enroute	-1			-19		-20
Destination	-7			-30	-1	-38
	-8			-49	-1	-58

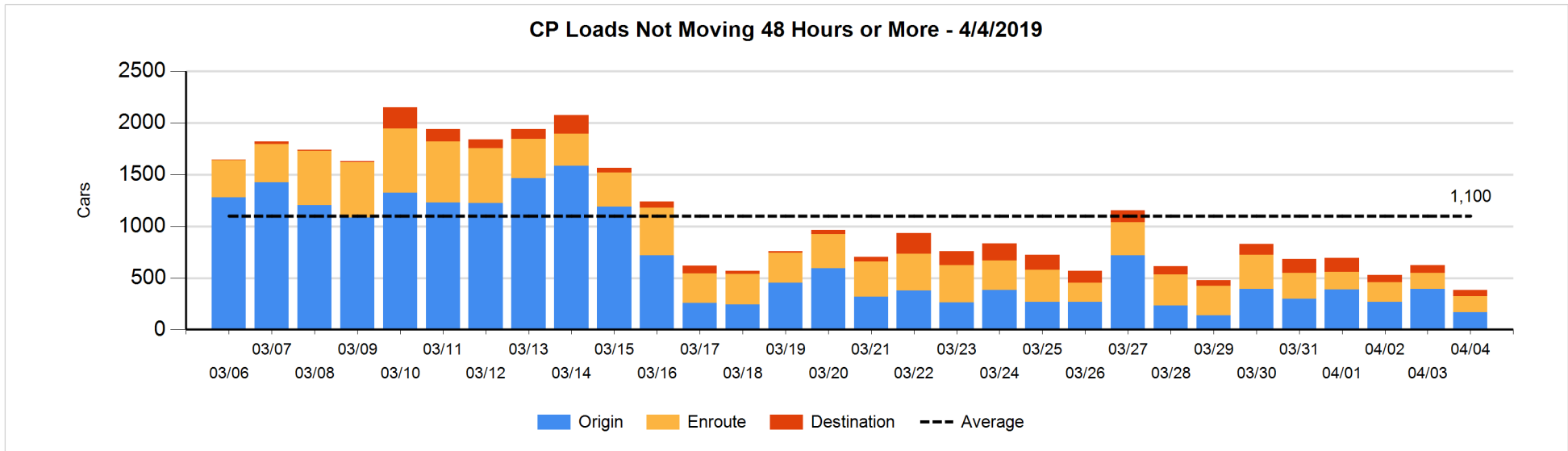
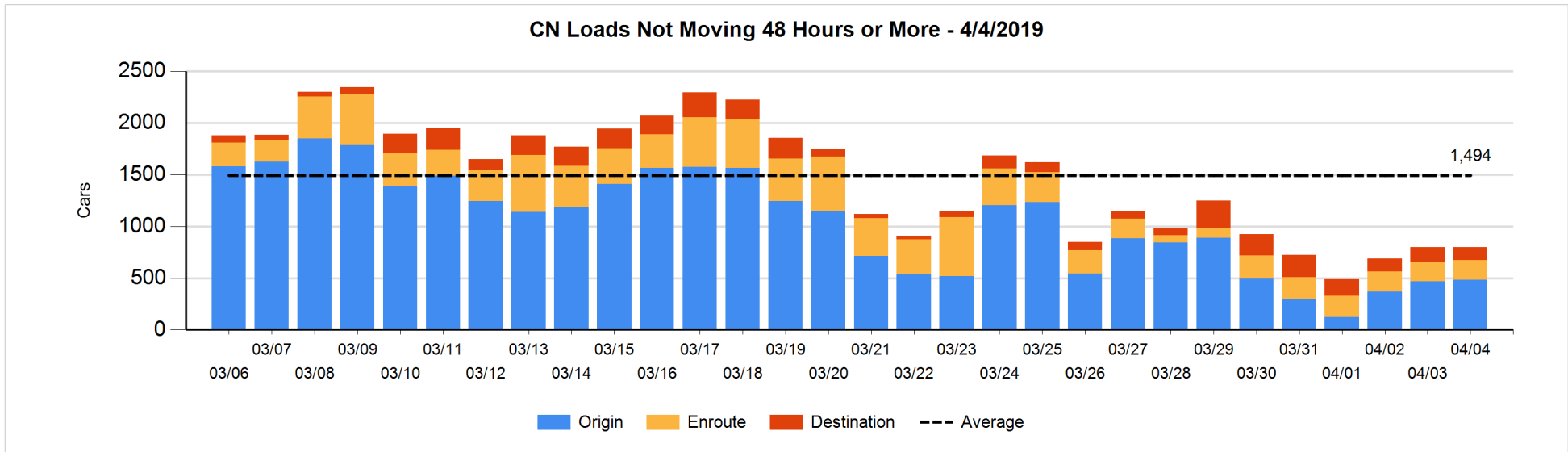


**Loads Not Moving 48 Hours or More - 4/4/2019**

	E Canada	Prince Rupert	Thunder Bay	USA/MEX	Vancouver	Total
<b>CN</b>						
Origin	97	97		115	172	481
Enroute	31	24	2	3	131	191
Destination	65	5		7	47	124
	193	126	2	125	350	796
<b>CP</b>						
Origin	4		36	1	125	166
Enroute	10			49	96	155
Destination	17		7		40	64
	31		43	50	261	385
<b>US Rail / Short Line</b>						
Origin						
Enroute				67		67
Destination				23	16	39
				90	16	106

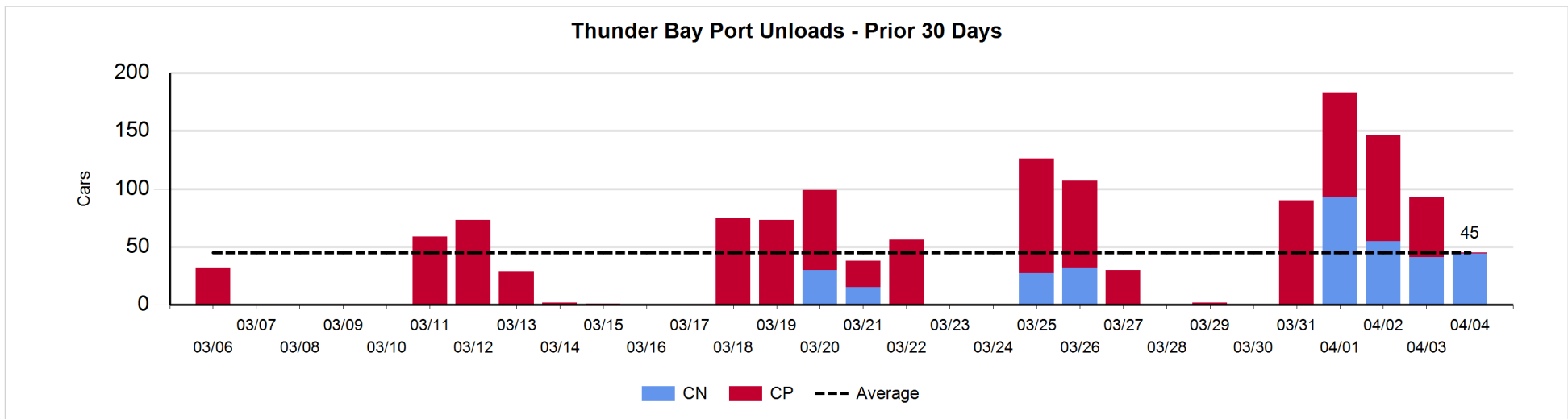
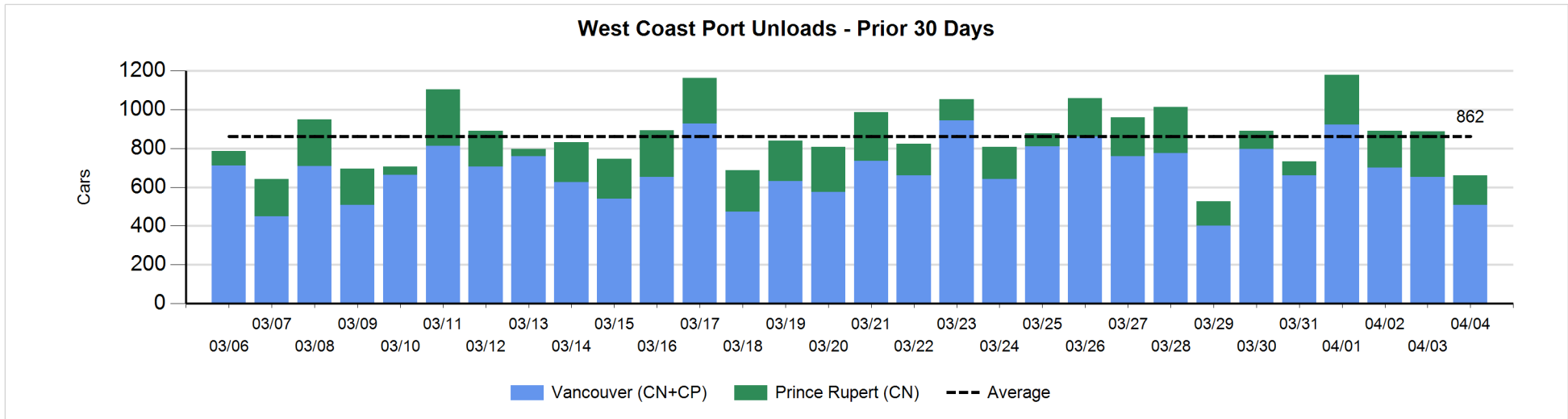
**Change in Loads Not Moving 48 Hours or More - 4/4/2019**

	E Canada	Prince Rupert	Thunder Bay	USA/MEX	Vancouver	Total
<b>CN</b>						
Origin	97	-5		4	-83	13
Enroute	-49	-23	2	0	74	4
Destination	-13	1	-1	-2	-4	-19
	35	-27	1	2	-13	-2
<b>CP</b>						
Origin	-99		-20	0	-110	-229
Enroute	-1			-3	6	2
Destination	15		1	-2	-23	-9
	-85		-19	-5	-127	-236
<b>US Rail / Short Line</b>						
Origin						
Enroute				41		41
Destination				7	0	7
				48	0	48



Port Unloads - 4/4/2019

	Prince Rupert	Vancouver	West Coast Total	Thunder Bay	Total
CN	154	173	327	44	371
CP		334	334	1	335
	154	507	661	45	706





**Port Terminal Status**

**Vancouver**

Daily Activity for 4/4/2019

	Cars Arrived	Cars Received in Interchange	Cars Delivered in Interchange	Cars Placed for Unloading	Loads on Wheels at Destination As of 4/4/2019
CN	160	3	160	26	320
CP	218	48	5	359	328
SRY		2		6	37

**Port Unloads**

	04/04	04/03	Week To Date	Last Week
CN	173	238	1,090	2,124
CP	334	415	1,694	2,937
SRY	2	6	39	101

**Age Profile of Loaded Cars Waiting Placement for Unloading**

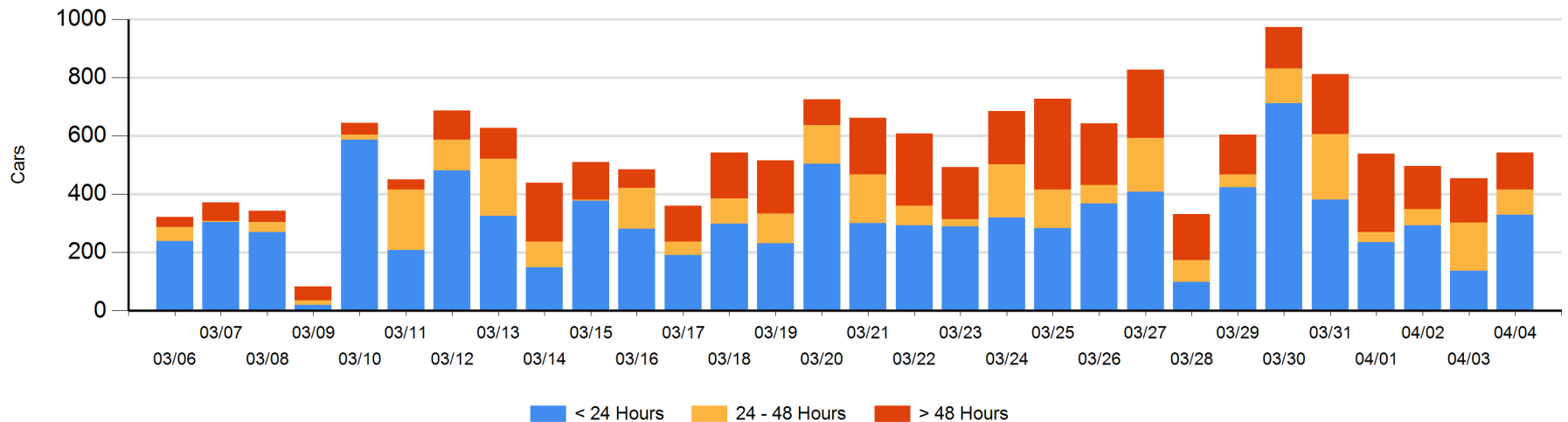
**Today**

	< 24 Hrs	24 - 48 Hrs	> 48-72 Hrs	> 72 Hrs	Total On Hand
CN	112	7	8	19	146
CP	106	79	18	82	285
SRY					0

**Change in Last 24 Hours**

	< 24 Hrs	24-48 Hrs	48 - 72 Hrs	> 72 Hrs
CN	90	-63	8	-7
CP	-9	-16	-4	-22
SRY				

**Loaded Cars on Hand Vancouver Waiting for Placement - Last 30 Days All Railways**



**Port Terminal Status**

**Prince Rupert**

Daily Activity for 4/4/2019

	Cars Arrived	Cars Received in Interchange	Cars Delivered in Interchange	Cars Placed for Unloading	Loads on Wheels at Destination As of 4/4/2019
CN	151			151	205

**Port Unloads**

	04/04	04/03	Week To Date	Last Week
CN	154	234	831	995

**Age Profile of Loaded Cars Waiting Placement for Unloading**

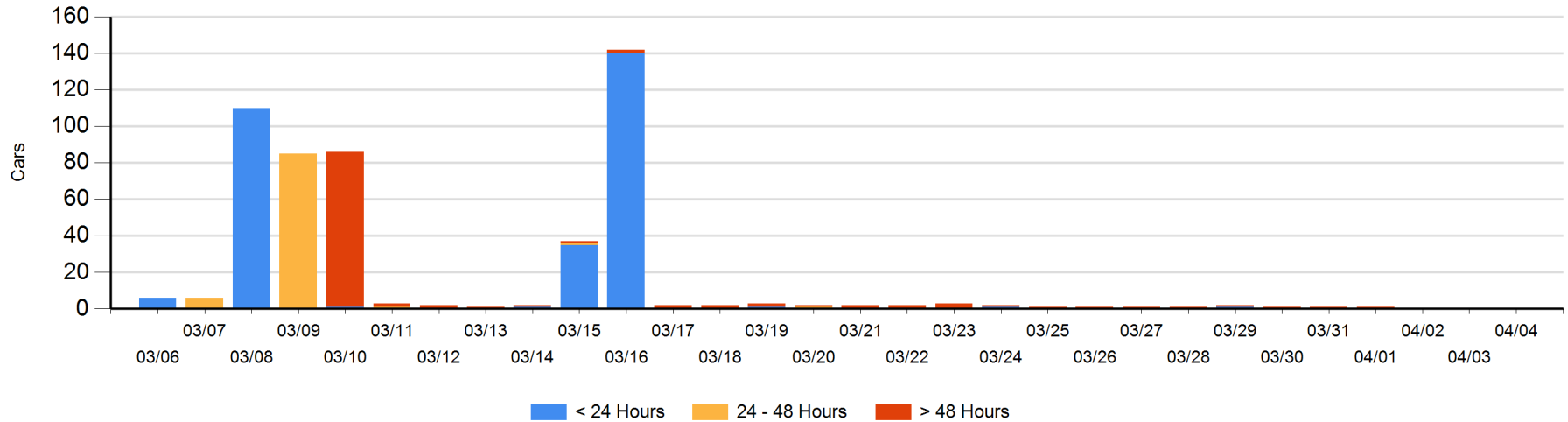
**Today**

	< 24 Hrs	24 - 48 Hrs	> 48-72 Hrs	> 72 Hrs	Total On Hand
CN					0

**Change in Last 24 Hours**

	< 24 Hrs	24-48 Hrs	48 - 72 Hrs	> 72 Hrs
CN				

Loaded Cars on Hand Prince Rupert Waiting for Placement - Last 30 Days All Railways



**Port Terminal Status**

**Thunder Bay**

Daily Activity for 4/4/2019

	Cars Arrived	Cars Received in Interchange	Cars Delivered in Interchange	Cars Placed for Unloading	Loads on Wheels at Destination As of 4/4/2019
CN	32			81	82
CP	51				69

**Port Unloads**

	04/04	04/03	Week To Date	Last Week
CN	44	41	233	59
CP	1	52	234	296

**Age Profile of Loaded Cars Waiting Placement for Unloading**

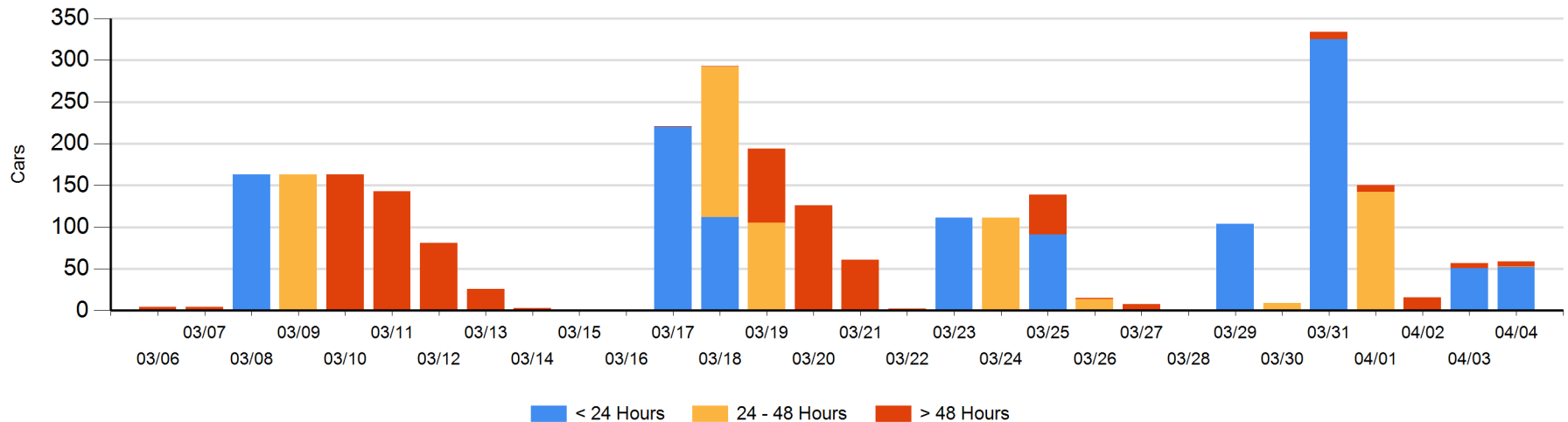
**Today**

	< 24 Hrs	24 - 48 Hrs	> 48-72 Hrs	> 72 Hrs	Total On Hand
CN	1				1
CP	51	1		6	58

**Change in Last 24 Hours**

	< 24 Hrs	24-48 Hrs	48 - 72 Hrs	> 72 Hrs
CN	-49			
CP	50	1		0

**Loaded Cars on Hand Thunder Bay Waiting for Placement - Last 30 Days All Railways**



## Measurement Definitions

Loads on Wheels	<p>Count of loaded rail cars including all rail cars that have been released loaded at origin and have not been reported by the railway as unloaded at destination.</p> <p>Counts include all rail cars (hopper cars and boxcars) moving within a pipeline.</p>
Loads Not Moving	<p>Loaded rail cars for which the railways have not reported a movement event for 48 hours or more whether the rail car is at origin, enroute or at destination.</p>
Port Unloads	<p>Count of rail cars reported by railways as unloaded at the western port destinations of Vancouver, Prince Rupert and Thunder Bay.</p> <p>Unload counts include all rail cars (hopper cars and boxcars) unloaded by all receivers including major port terminals, transloaders and other receivers.</p>
Cars Arrived	<p>Count of rail cars reported as arrived at the destination railway terminal.</p>
Cars Received in Interchange	<p>Count of rail cars received in interchange by each railway within a destination railway terminal. Interchange activity is tracked for the Vancouver and Thunder Bay pipelines as applicable.</p>
Cars Delivered in Interchange	<p>Count of rail cars delivered in interchange by each railway within a destination railway terminal. Interchange activity is tracked for the Vancouver and Thunder Bay pipelines as applicable.</p>
Cars Placed for Unloading	<p>Count of rail cars reported by the railways as placed loaded at the receiver's facility for unloading.</p>
Loads on Wheels at Destination	<p>Count of rail cars that remain under load within the destination railway terminal including rail cars that have been reported as placed for unloading but not yet reported as unloaded.</p>
Waiting Placement for Unloading	<p>Count of rail cars that have been reported as arrived at the destination railway terminal but not reported as placed for unloading by the railway.</p> <p>For the Ports of Vancouver, Prince Rupert and Thunder Bay the count of rail cars waiting placement for unloading is categorized by age – i.e. the elapsed time from arrival at destination to the current report date.</p>