

## SPEED READ

- Loads on wheels increased overnight, reflecting a rise in both CN and CP volumes. On a net basis, volumes increased due to higher traffic across all corridors other than Thunder Bay.
- Network fluidity improved overnight, led by a decline in idle car counts on CN by 18% (-128) offset by a rise in idle car counts on CP by 4% (+28). The total count of cars for 4+ days on both railways declined 6% (-25) overnight - currently at 392 cars.
- One day in Week 37 unloads now behind prior week's performance by 300 unloads, reflecting lower unloads at Vancouver and Prince Rupert offset by improved week over week performance at Thunder Bay.

---

## Loads on Wheels

- Loads on wheels increased significantly by 13% (+1,381) overnight, due to higher traffic on both CN and CP - combined total at 11,768, the highest seen in the last 30 days, and 14% above the trailing 30-day average.
- On a net basis, the rise in loads on wheels indicates higher volumes across all corridors other than Thunder Bay.
- CN volumes increased significantly by 14% (+796) overnight, with higher volumes in the Vancouver, Prince Rupert and E. Canada corridors offset by lower volumes in the USA/MEX and Thunder Bay corridors. System wide CN loads on wheels currently at 6,474 and 13% above the trailing 30-day average.
- CP volumes increased significantly by 11% (+506) overnight, driven by a rise in traffic in the Vancouver and USA/MEX corridors offset by a decline in traffic in the E. Canada and Thunder Bay corridors. CP system wide loads on wheels currently at 4,946 and 17% above the trailing 30-day average.
- Vancouver currently at 7,448, the highest seen in the last 30 days, increased significantly by 16% (+1,013) overnight, now 26% above the trailing 30-day average.
- The Prince Rupert pipeline currently at 1,619, gained for the third consecutive day, up 32% (+397) overnight, and 3% above the trailing 30-day average.
- Thunder Bay volumes fell 6% (-62) overnight - presently at 910 and 85% above the trailing 30-day average, with 74% of traffic moving on CP.

## Hopper Car Rationing

- CN rationed 1,314 hopper cars in week 35.

## Loads Not Moving

- **The count of cars not moving for 48+ hours declined 7% (-100) overnight, marking lower counts on CN offset by higher counts on CP. Idle car counts presently at 1,356 and 40% below the trailing 30-day average.**
- CN
  - **The count of idle cars for 48+ hours fell 18% (-128) overnight - currently at 595 cars.**
  - The number of cars idle for 4+ days declined 15% (-43) overnight - currently at 237 cars.
  - The count of cars not moving for 7+ days increased significantly by 303% (+100) overnight - currently at 133 cars.
  - Vancouver represents 57% of all idle cars.
  - In total 57% of all idle cars are dwelling at origin locations.
- CP
  - **CP idle car counts for 48+ hours gained 4% (+28) overnight - currently at 761 cars.**
  - The number of cars idle for 4+ days increased 13% (+18) overnight - currently at 155 cars.
  - The number of cars idle for 7+ days declined 7% (-5) overnight - presently at 69 cars, the lowest seen in the last 30 days.

- Vancouver accounts for 67% of all idle cars.
- In total 48% of all idle cars are dwelling at origin locations.

### **Port Performance**

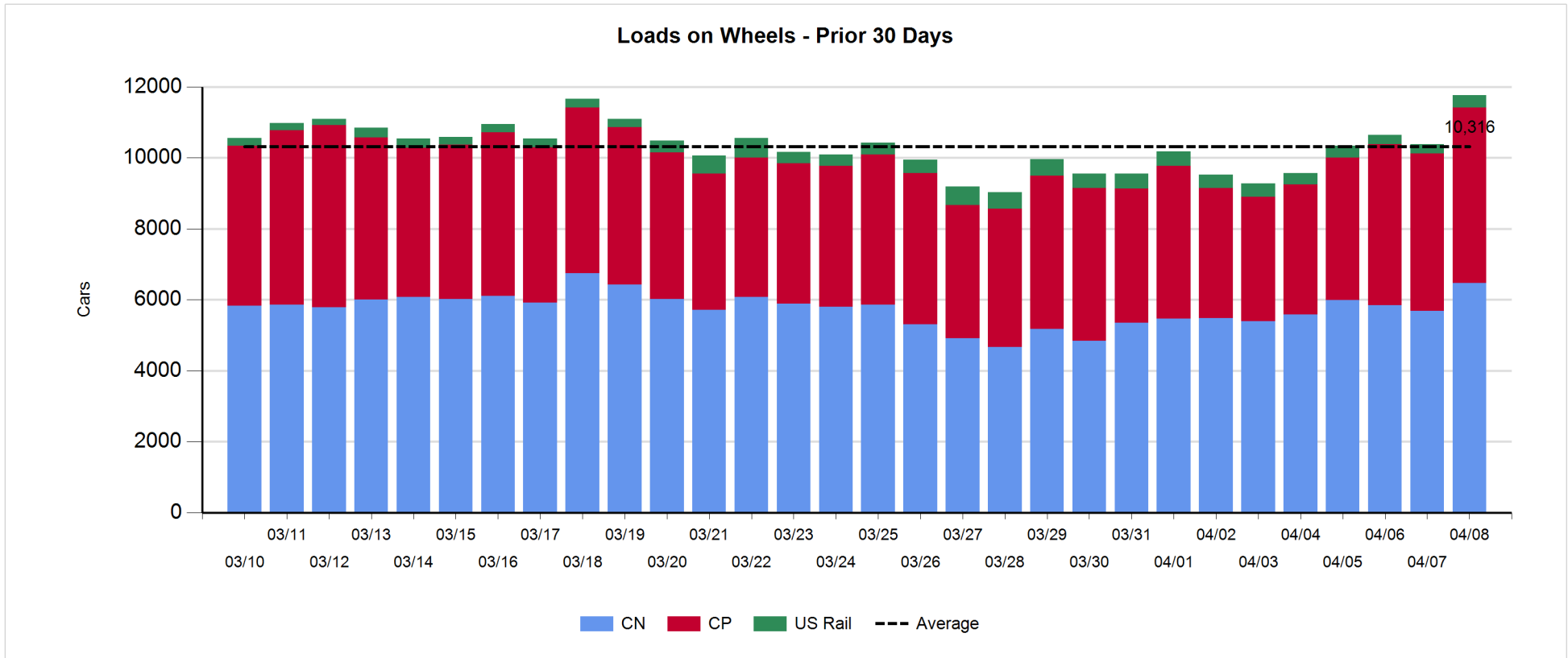
- CN and CP reported a total of 1,051 cars unloaded at the three major ports, now 11% above the trailing 30-day average. One day in Week 37 unloads now behind last week's pace by 300 unloads, reflecting lower unloads at Vancouver and Prince Rupert offset by higher unloads at Thunder Bay.
- Vancouver
  - 566 unloads reported by CN and CP at the Port of Vancouver; CN - 240 and CP - 326. One day in Week 37 unloads are tracking behind last week's performance by 350 unloads.
  - There are fewer than 1,000 cars on site at Vancouver with 550 cars arriving at the port in the last 24 hours.
  - CN and CP have more than 1,850 cars in British Columbia en route to Vancouver, with fewer than 1,100 cars at Kamloops and west, and 55% of traffic moving on CN.
- Prince Rupert
  - Prince Rupert reported 188 unloads, now behind last week's unloads after one day by more than 50 unloads.
  - Loads on wheels now above 1,000 cars - currently at 1,619 cars.
  - There are 100 cars west of Jasper en route to Prince Rupert.
  - There are 150 cars on site at Prince Rupert with more than 250 cars arriving at the port in the last 24 hours.
- Thunder Bay
  - 297 unloads, the highest seen in the last 30 days, were reported at Thunder Bay yesterday. One day in Week 37 unloads are tracking ahead of last week's pace by more than 100 unloads.
  - There are 600 cars on site at Thunder Bay with more than 300 cars arriving at the port in the prior 24 hours.
  - There are 18 cars en route to Thunder Bay from Winnipeg and east.

**Daily Loads on Wheels - 4/8/2019**

|            | E Canada | Prince Rupert | Thunder Bay | USA/MEX | Vancouver | Total  |
|------------|----------|---------------|-------------|---------|-----------|--------|
| CN         | 714      | 1,619         | 236         | 271     | 3,634     | 6,474  |
| CP         | 250      |               | 674         | 226     | 3,796     | 4,946  |
| Short Line | 2        |               |             |         | 18        | 20     |
| US Rail    |          |               |             | 328     |           | 328    |
|            | 966      | 1,619         | 910         | 825     | 7,448     | 11,768 |

**Change in Loads on Wheels - Prior 24 Hours**

|            | E Canada | Prince Rupert | Thunder Bay | USA/MEX | Vancouver | Total |
|------------|----------|---------------|-------------|---------|-----------|-------|
| CN         | 63       | 397           | -56         | -101    | 493       | 796   |
| CP         | -44      |               | -6          | 33      | 523       | 506   |
| Short Line | -1       |               |             |         | -3        | -4    |
| US Rail    |          |               |             | 83      |           | 83    |
|            | 18       | 397           | -62         | 15      | 1,013     | 1,381 |

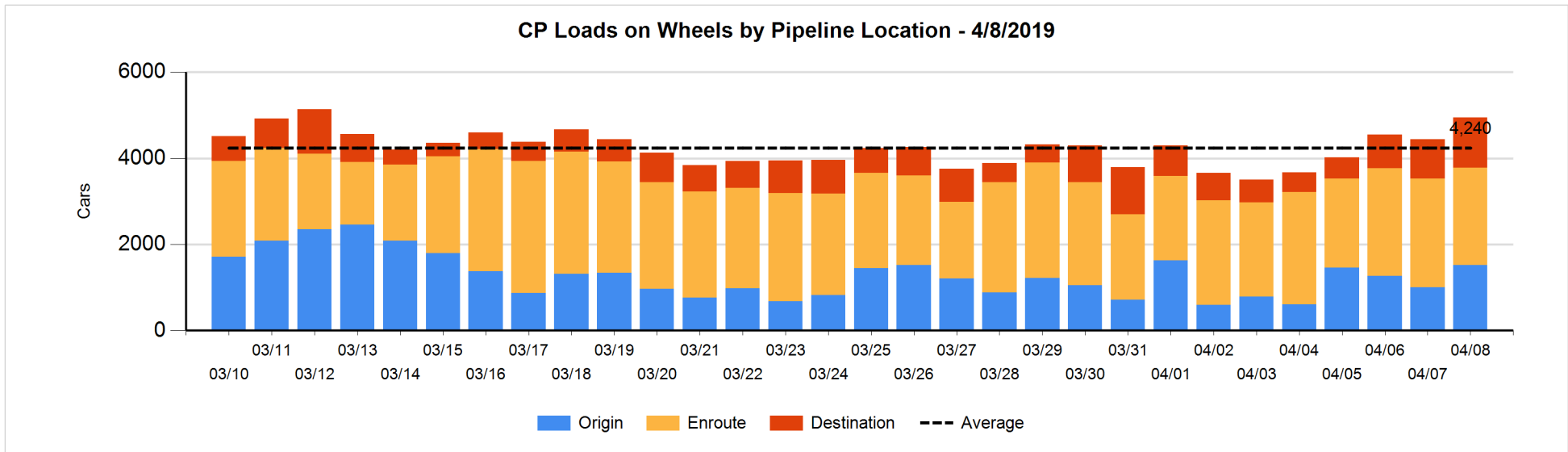
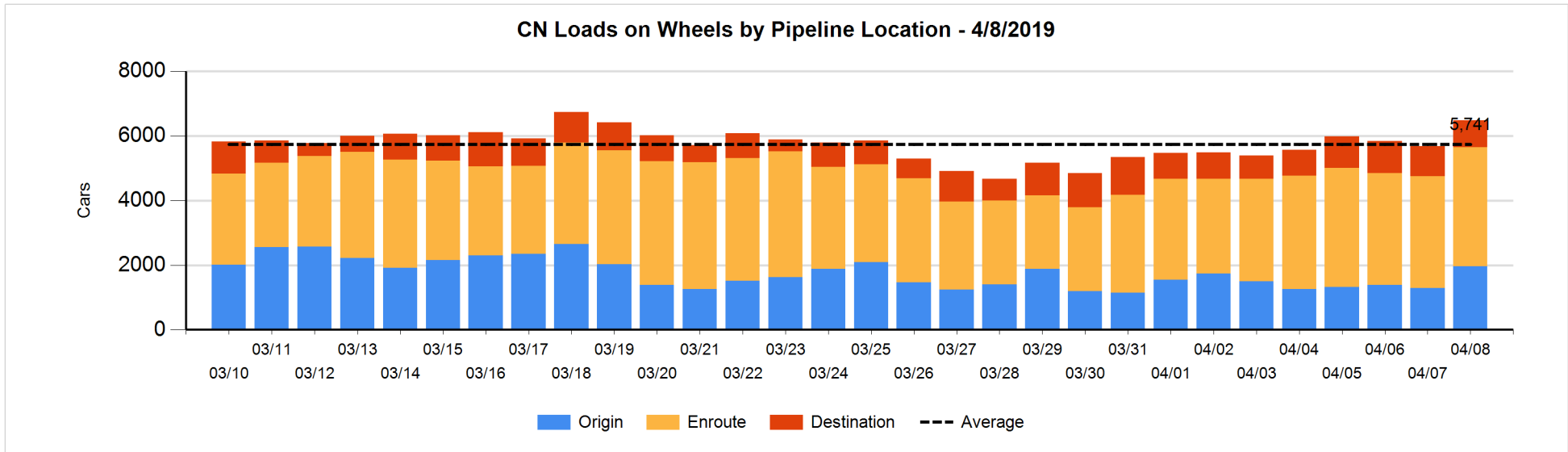


**Daily Loads on Wheels By Pipeline Location - 4/8/2019**

|                      | E Canada | Prince Rupert | Thunder Bay | USA/MEX | Vancouver | Total |
|----------------------|----------|---------------|-------------|---------|-----------|-------|
| CN                   |          |               |             |         |           |       |
| Origin               | 189      | 682           | 99          | 105     | 890       | 1,965 |
| Enroute              | 442      | 779           | 1           | 137     | 2,330     | 3,689 |
| Destination          | 83       | 158           | 136         | 29      | 414       | 820   |
|                      | 714      | 1,619         | 236         | 271     | 3,634     | 6,474 |
| CP                   |          |               |             |         |           |       |
| Origin               | 104      |               | 188         | 80      | 1,146     | 1,518 |
| Enroute              | 38       |               | 21          | 106     | 2,097     | 2,262 |
| Destination          | 108      |               | 465         | 40      | 553       | 1,166 |
|                      | 250      |               | 674         | 226     | 3,796     | 4,946 |
| US Rail / Short Line |          |               |             |         |           |       |
| Origin               |          |               |             |         |           |       |
| Enroute              | 2        |               |             | 151     |           | 153   |
| Destination          |          |               |             | 177     | 18        | 195   |
|                      | 2        |               |             | 328     | 18        | 348   |

**Change in Daily Loads on Wheels By Pipeline Location - Prior 24 Hours**

|                      | E Canada | Prince Rupert | Thunder Bay | USA/MEX | Vancouver | Total |
|----------------------|----------|---------------|-------------|---------|-----------|-------|
| CN                   |          |               |             |         |           |       |
| Origin               | 114      | 379           | 99          | 4       | 88        | 684   |
| Enroute              | -30      | -57           | 0           | -124    | 425       | 214   |
| Destination          | -21      | 75            | -155        | 19      | -20       | -102  |
|                      | 63       | 397           | -56         | -101    | 493       | 796   |
| CP                   |          |               |             |         |           |       |
| Origin               | 13       |               | 132         | 34      | 333       | 512   |
| Enroute              | -108     |               | -324        | -24     | 196       | -260  |
| Destination          | 51       |               | 186         | 23      | -6        | 254   |
|                      | -44      |               | -6          | 33      | 523       | 506   |
| US Rail / Short Line |          |               |             |         |           |       |
| Origin               |          |               |             |         |           |       |
| Enroute              | 0        |               |             | 3       |           | 3     |
| Destination          | -1       |               |             | 80      | -3        | 76    |
|                      | -1       |               |             | 83      | -3        | 79    |

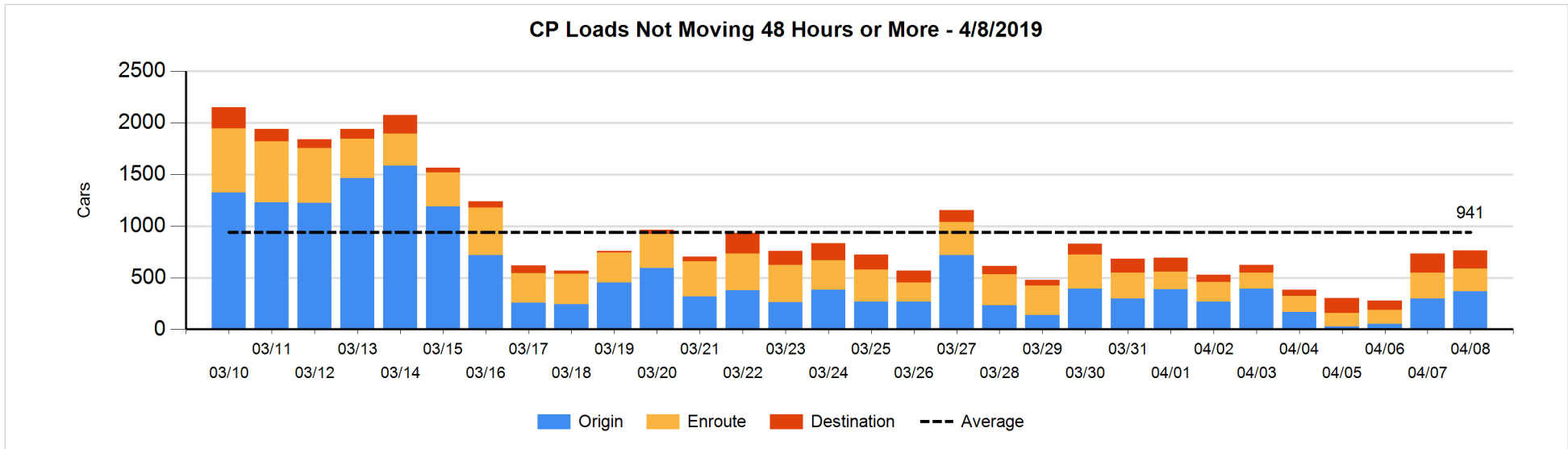
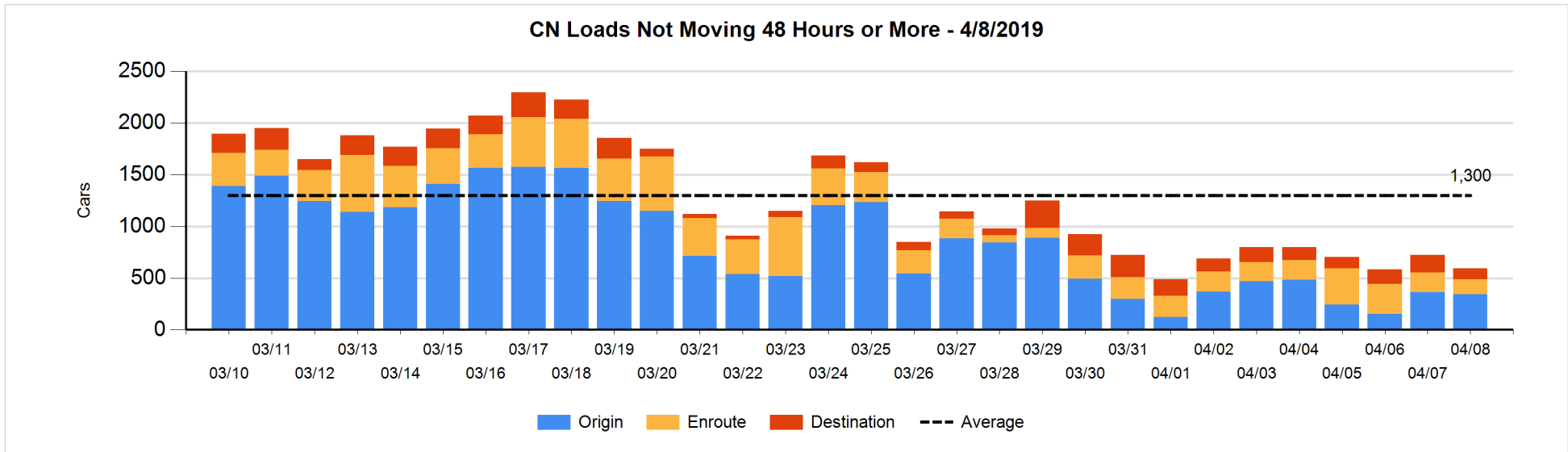


**Loads Not Moving 48 Hours or More - 4/8/2019**

|                             | E Canada | Prince Rupert | Thunder Bay | USA/MEX | Vancouver | Total |
|-----------------------------|----------|---------------|-------------|---------|-----------|-------|
| <b>CN</b>                   |          |               |             |         |           |       |
| Origin                      | 6        | 51            |             | 98      | 186       | 341   |
| Enroute                     | 28       | 8             |             | 19      | 93        | 148   |
| Destination                 | 36       |               | 1           | 6       | 63        | 106   |
|                             | 70       | 59            | 1           | 123     | 342       | 595   |
| <b>CP</b>                   |          |               |             |         |           |       |
| Origin                      | 91       |               | 52          | 30      | 193       | 366   |
| Enroute                     | 11       |               |             | 52      | 158       | 221   |
| Destination                 |          |               | 2           | 16      | 156       | 174   |
|                             | 102      |               | 54          | 98      | 507       | 761   |
| <b>US Rail / Short Line</b> |          |               |             |         |           |       |
| Origin                      |          |               |             |         |           |       |
| Enroute                     | 2        |               |             | 43      |           | 45    |
| Destination                 |          |               |             | 59      | 11        | 70    |
|                             | 2        |               |             | 102     | 11        | 115   |

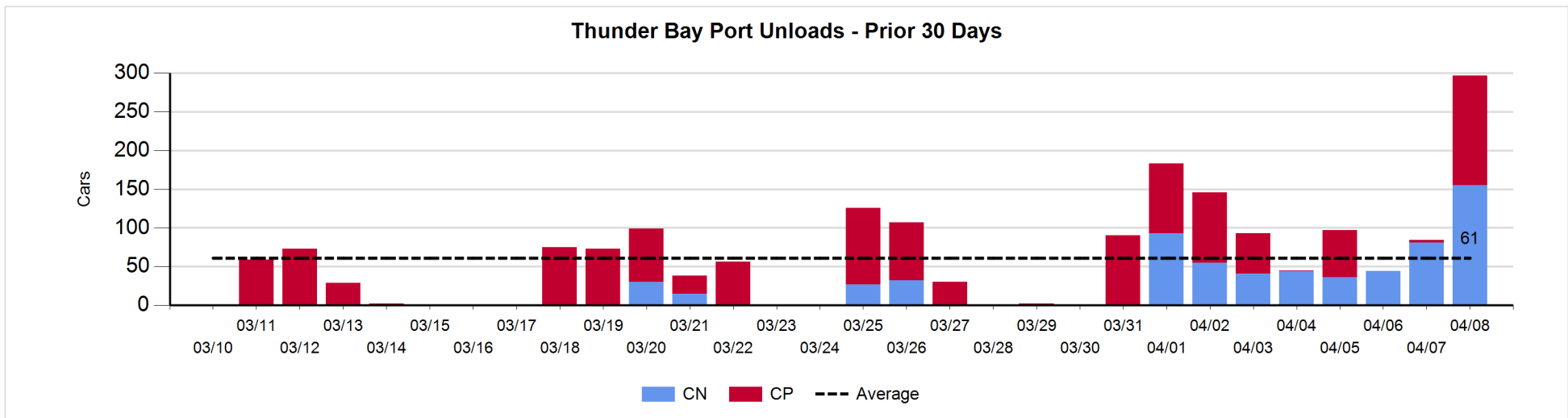
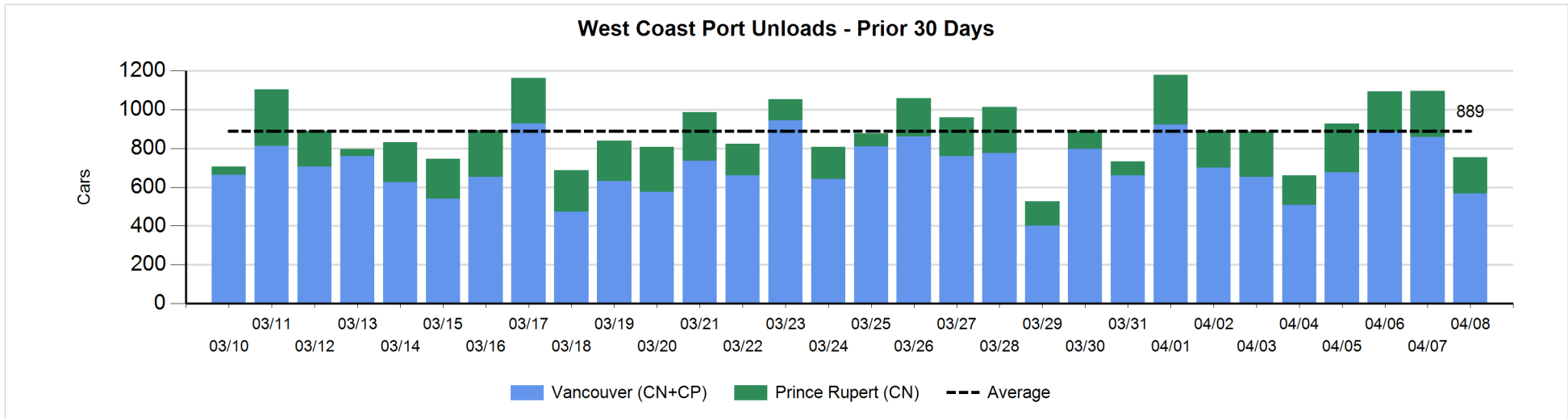
**Change in Loads Not Moving 48 Hours or More - 4/8/2019**

|                             | E Canada | Prince Rupert | Thunder Bay | USA/MEX | Vancouver | Total |
|-----------------------------|----------|---------------|-------------|---------|-----------|-------|
| <b>CN</b>                   |          |               |             |         |           |       |
| Origin                      | 6        | 51            |             | 3       | -82       | -22   |
| Enroute                     | 0        | -1            | -1          | -2      | -39       | -43   |
| Destination                 | -5       | -2            | -33         | -2      | -21       | -63   |
|                             | 1        | 48            | -34         | -1      | -142      | -128  |
| <b>CP</b>                   |          |               |             |         |           |       |
| Origin                      | 0        |               | 48          | 0       | 21        | 69    |
| Enroute                     | 2        |               |             | 14      | -47       | -31   |
| Destination                 | -55      |               | -14         | 1       | 58        | -10   |
|                             | -53      |               | 34          | 15      | 32        | 28    |
| <b>US Rail / Short Line</b> |          |               |             |         |           |       |
| Origin                      |          |               |             |         |           |       |
| Enroute                     | 0        |               |             | -18     |           | -18   |
| Destination                 | -1       |               |             | -5      | -4        | -10   |
|                             | -1       |               |             | -23     | -4        | -28   |



**Port Unloads - 4/8/2019**

|    | Prince Rupert | Vancouver | West Coast Total | Thunder Bay | Total |
|----|---------------|-----------|------------------|-------------|-------|
| CN | 188           | 240       | 428              | 155         | 583   |
| CP |               | 326       | 326              | 142         | 468   |
|    | 188           | 566       | 754              | 297         | 1,051 |





## Port Terminal Status

### Vancouver

#### Daily Activity for 4/8/2019

|     | Cars Arrived | Cars Received in Interchange | Cars Delivered in Interchange | Cars Placed for Unloading | Loads on Wheels at Destination As of 4/8/2019 |
|-----|--------------|------------------------------|-------------------------------|---------------------------|---|
| CN  | 311          | 116                          | 81                            | 199                       | 414   |
| CP  | 230          | 81                           | 119                           | 353                       | 553   |
| SRY | 1            | 3                            |                               | 4                         | 18  |

### Port Unloads

|     | 04/08 | 04/07 | Week To Date | Last Week |
|-----|-------|-------|--------------|-----------|
| CN  | 240   | 359   | 240          | 2,335     |
| CP  | 326   | 498   | 326          | 2,867     |
| SRY | 7     | 1     | 7            | 59        |

## Age Profile of Loaded Cars Waiting Placement for Unloading

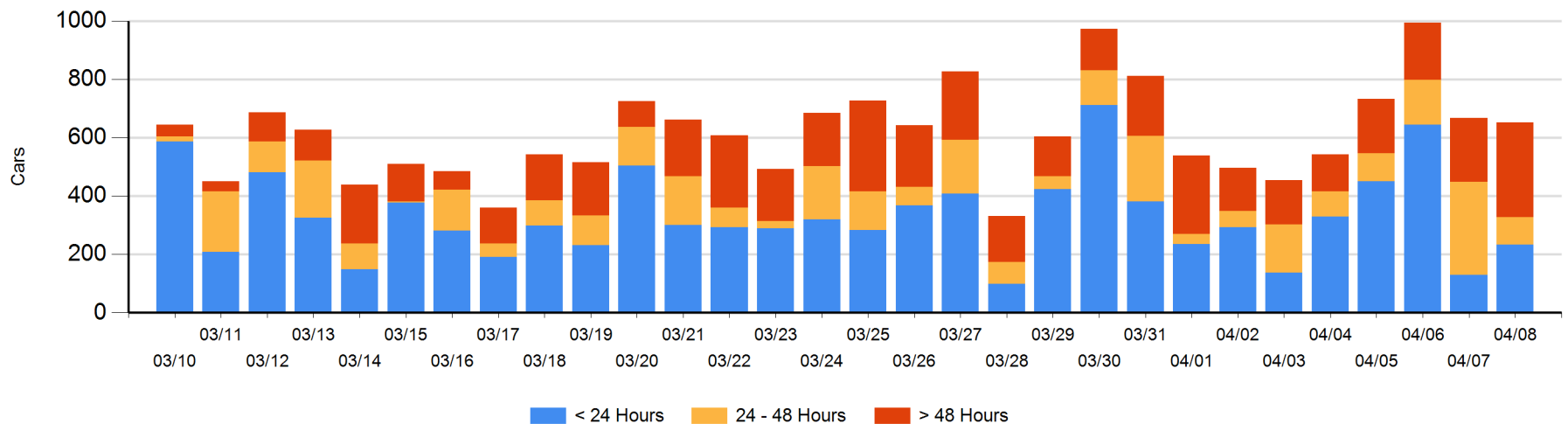
### Today

|     | < 24 Hrs | 24 - 48 Hrs | > 48-72 Hrs | > 72 Hrs | Total On Hand |
|-----|----------|-------------|-------------|----------|---------------|
| CN  | 119      | 55          | 79          | 45       | 298           |
| CP  | 114      | 40          | 73          | 128      | 355           |
| SRY |          |             |             |          | 0             |

### Change in Last 24 Hours

|     | < 24 Hrs | 24-48 Hrs | 48 - 72 Hrs | > 72 Hrs |
|-----|----------|-----------|-------------|----------|
| CN  | 83       | -98       | 42          | 20       |
| CP  | 21       | -127      | 44          | 0        |
| SRY |          |           |             |          |

Loaded Cars on Hand Vancouver Waiting for Placement - Last 30 Days All Railways



**Port Terminal Status**

**Prince Rupert**

Daily Activity for 4/8/2019

|    | Cars Arrived | Cars Received in Interchange | Cars Delivered in Interchange | Cars Placed for Unloading | Loads on Wheels at Destination As of 4/8/2019 |
|----|--------------|------------------------------|-------------------------------|---------------------------|---|
| CN | 263          |                              |                               | 263                       | 158   |

**Port Unloads**

|    | 04/08 | 04/07 | Week To Date | Last Week |
|----|-------|-------|--------------|-----------|
| CN | 188   | 239   | 188          | 1,529     |

**Age Profile of Loaded Cars Waiting Placement for Unloading**

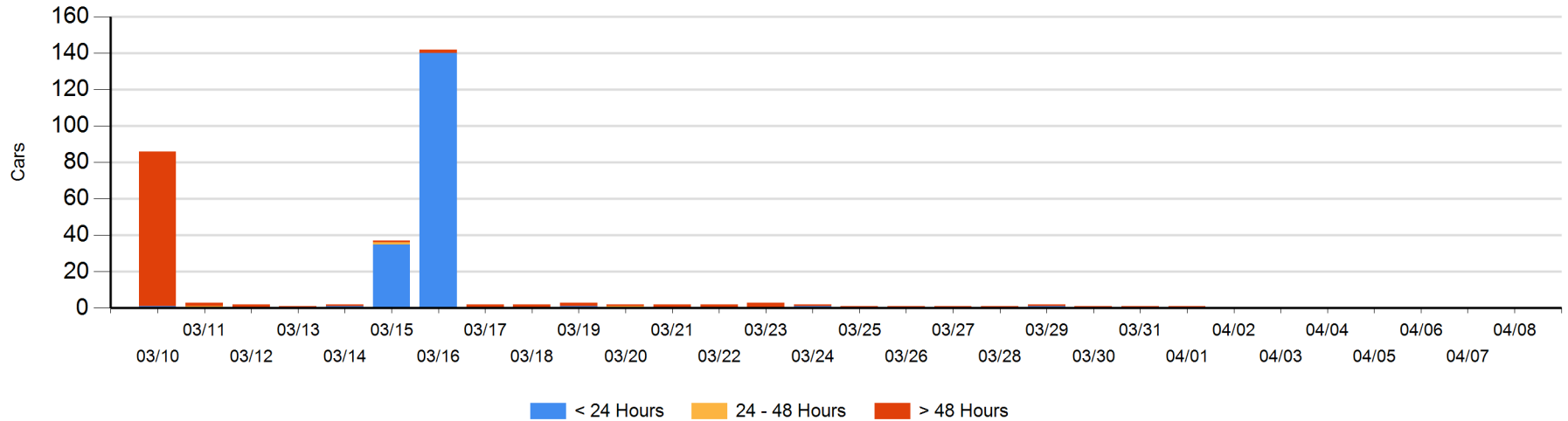
**Today**

|    | < 24 Hrs | 24 - 48 Hrs | > 48-72 Hrs | > 72 Hrs | Total On Hand |
|----|----------|-------------|-------------|----------|---------------|
| CN |          |             |             |          | 0             |

**Change in Last 24 Hours**

|    | < 24 Hrs | 24-48 Hrs | 48 - 72 Hrs | > 72 Hrs |
|----|----------|-----------|-------------|----------|
| CN |          |           |             |          |

Loaded Cars on Hand Prince Rupert Waiting for Placement - Last 30 Days All Railways



**Port Terminal Status**

**Thunder Bay**

Daily Activity for 4/8/2019

|    | Cars Arrived | Cars Received in Interchange | Cars Delivered in Interchange | Cars Placed for Unloading | Loads on Wheels at Destination As of 4/8/2019 |
|----|--------------|------------------------------|-------------------------------|---------------------------|---|
| CN |              |                              |                               | 12                        | 136   |
| CP | 328          |                              |                               | 156                       | 465   |

**Port Unloads**

|    | 04/08 | 04/07 | Week To Date | Last Week |
|----|-------|-------|--------------|-----------|
| CN | 155   | 81    | 155          | 394       |
| CP | 142   | 3     | 142          | 298       |

**Age Profile of Loaded Cars Waiting Placement for Unloading**

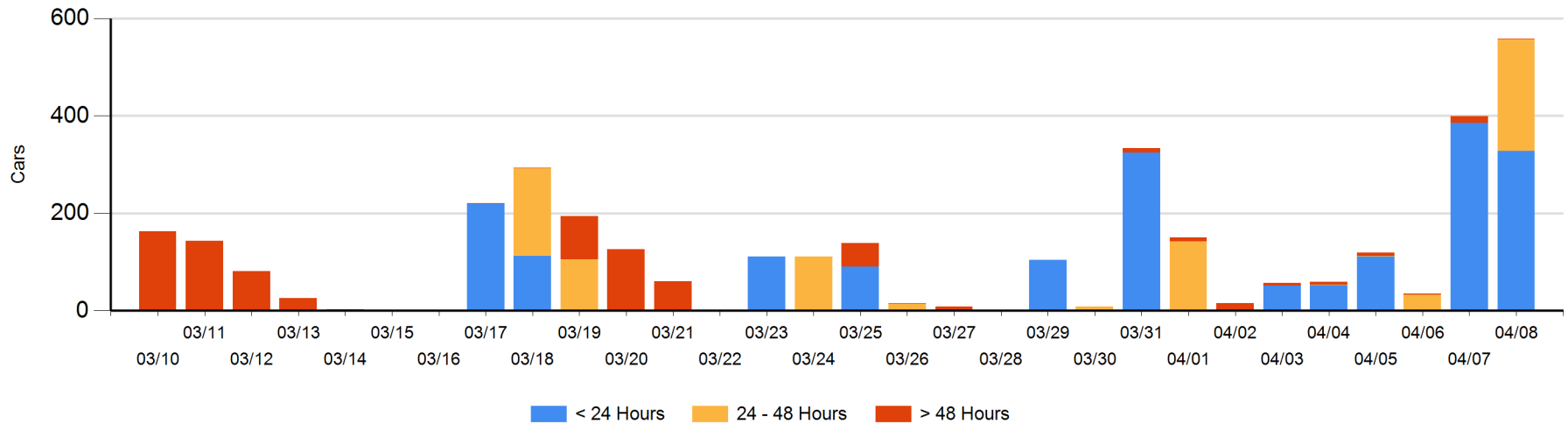
**Today**

|    | < 24 Hrs | 24 - 48 Hrs | > 48-72 Hrs | > 72 Hrs | Total On Hand |
|----|----------|-------------|-------------|----------|---------------|
| CN |          | 113         |             |          | 113           |
| CP | 328      | 117         |             | 1        | 446           |

**Change in Last 24 Hours**

|    | < 24 Hrs | 24-48 Hrs | 48 - 72 Hrs | > 72 Hrs |
|----|----------|-----------|-------------|----------|
| CN | -124     | 113       |             | -1       |
| CP | 66       | 117       | -11         | 0        |

Loaded Cars on Hand Thunder Bay Waiting for Placement - Last 30 Days All Railways



## Measurement Definitions

|                                 |   |
|---------------------------------|---|
| Loads on Wheels                 | <p>Count of loaded rail cars including all rail cars that have been released loaded at origin and have not been reported by the railway as unloaded at destination.</p> <p>Counts include all rail cars (hopper cars and boxcars) moving within a pipeline.</p>   |
| Loads Not Moving                | <p>Loaded rail cars for which the railways have not reported a movement event for 48 hours or more whether the rail car is at origin, enroute or at destination.</p>  |
| Port Unloads                    | <p>Count of rail cars reported by railways as unloaded at the western port destinations of Vancouver, Prince Rupert and Thunder Bay.</p> <p>Unload counts include all rail cars (hopper cars and boxcars) unloaded by all receivers including major port terminals, transloaders and other receivers.</p>   |
| Cars Arrived                    | <p>Count of rail cars reported as arrived at the destination railway terminal.</p>  |
| Cars Received in Interchange    | <p>Count of rail cars received in interchange by each railway within a destination railway terminal. Interchange activity is tracked for the Vancouver and Thunder Bay pipelines as applicable.</p>   |
| Cars Delivered in Interchange   | <p>Count of rail cars delivered in interchange by each railway within a destination railway terminal. Interchange activity is tracked for the Vancouver and Thunder Bay pipelines as applicable.</p>  |
| Cars Placed for Unloading       | <p>Count of rail cars reported by the railways as placed loaded at the receiver's facility for unloading.</p>   |
| Loads on Wheels at Destination  | <p>Count of rail cars that remain under load within the destination railway terminal including rail cars that have been reported as placed for unloading but not yet reported as unloaded.</p>  |
| Waiting Placement for Unloading | <p>Count of rail cars that have been reported as arrived at the destination railway terminal but not reported as placed for unloading by the railway.</p> <p>For the Ports of Vancouver, Prince Rupert and Thunder Bay the count of rail cars waiting placement for unloading is categorized by age – i.e. the elapsed time from arrival at destination to the current report date.</p> |