

## SPEED READ

- Loads on wheels decreased overnight, marking a decline in both CN and CP volumes. On a net basis, volumes fell due to lower traffic across all corridors - Vancouver, Thunder Bay, Prince Rupert, USA/MEX and E. Canada.
- Network fluidity deteriorated overnight, led by an increase in idle car counts on both CN and CP by 60% (+423) and 10% (+78), respectively. The total count of cars for 4+ days on both railways gained 21% (+93) overnight - now at 539 cars.
- Three days in Week 37 unloads now behind prior week's performance by fewer than 250 unloads, marking lower unloads at Vancouver and Prince Rupert offset by improved week over week performance at Thunder Bay.

---

## Loads on Wheels

- Loads on wheels decreased 5% (-574) overnight, due to lower volumes on both CN and CP - combined total at 10,840 and 5% above the trailing 30-day average.
- On a net basis, the decline in loads on wheels reflects lower volumes across all corridors - Vancouver, Thunder Bay, Prince Rupert, USA/MEX and E. Canada.
- CN volumes declined 6% (-353) overnight, with lower traffic across all corridors other than USA/MEX. System wide CN loads on wheels now at 6,000 and 4% above the trailing 30-day average.
- CP volumes declined 4% (-176) overnight, driven by a decline in volumes across all corridors - Vancouver, Thunder Bay, USA/MEX and E. Canada. CP system wide loads on wheels now at 4,649 and 10% above the trailing 30-day average.
- Vancouver now at 7,174, fell 5% (-348) overnight, now 20% above the trailing 30-day average.
- The Prince Rupert pipeline now at 1,533, fell slightly (-4) overnight, and 2% below the trailing 30-day average.
- Thunder Bay volumes decreased significantly by 13% (-96) overnight and have now decreased for the fourth consecutive day - now at 652 and 24% above the trailing 30-day average, with 68% of traffic moving on CP.

## Hopper Car Rationing

- CN rationed 1,314 hopper cars in week 35.

## Loads Not Moving

- **The count of cars not moving for 48+ hours increased 34% (+501) overnight, marking higher counts on both CN and CP. Idle car counts now at 1,985 and 5% below the trailing 30-day average.**
- CN
  - **The count of idle cars for 48+ hours increased significantly by 60% (+423) overnight - now at 1,128 cars.**
  - The number of cars idle for 4+ days increased significantly by 51% (+61) overnight - now at 181 cars.
  - The count of cars not moving for 7+ days increased significantly by 54% (+20) overnight - now at 57 cars.
  - Vancouver represents 59% of all idle cars.
  - In total 53% of all idle cars are dwelling at origin locations.
- CP
  - **CP idle car counts for 48+ hours increased for the fourth consecutive day, up 10% (+78) overnight - presently at 857 cars.**
  - The number of cars idle for 4+ days gained 10% (+33) overnight and have now increased for the fourth consecutive day - presently at 358 cars.

- The number of cars idle for 7+ days increased 35% (+21) overnight - now at 81 cars.
- Vancouver accounts for 93% of all idle cars.
- In total 53% of all idle cars are dwelling at origin locations.

### **Port Performance**

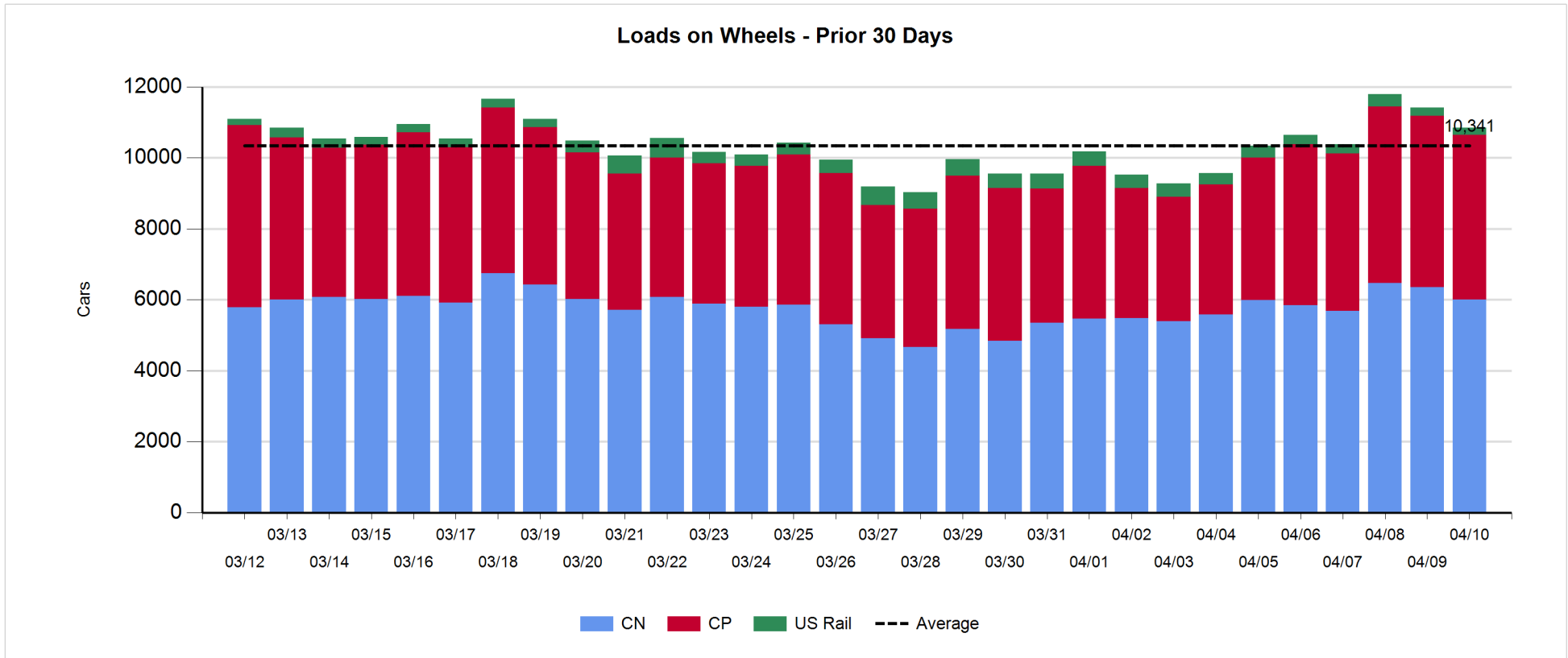
- CN and CP reported a total of 913 cars unloaded at the three major ports, now 5% below the trailing 30-day average. Three days in Week 37 unloads now behind last week's pace by less than 250 unloads, marking lower unloads at Vancouver and Prince Rupert offset by higher unloads at Thunder Bay.
- Vancouver
  - 648 unloads reported by CN and CP at the Port of Vancouver; CN - 376 and CP - 272. Three days in Week 37 unloads are tracking behind last week's performance by more than 300 unloads.
  - There are 1,350 cars on site at Vancouver with less than 850 cars arriving at the port in the last 24 hours.
  - CN and CP have 2,500 cars in British Columbia en route to Vancouver, with nearly 1,450 cars at Kamloops and west, and 51% of traffic moving on CN.
- Prince Rupert
  - Prince Rupert reported 57 unloads, now behind last week's unloads after three days by more than 250 unloads.
  - Loads on wheels now above 1,000 cars - presently at 1,533 cars.
  - There are more than 600 cars west of Jasper en route to Prince Rupert.
  - There are nearly 200 cars on site at Prince Rupert with 250 cars arriving at the port in the last 24 hours.
- Thunder Bay
  - 208 unloads were reported at Thunder Bay yesterday. Three days in Week 37 unloads are tracking ahead of last week's pace by 350 unloads.
  - There are 300 cars on site at Thunder Bay with more than 150 cars arriving at the port in the prior 24 hours.
  - There are more than 100 cars en route to Thunder Bay from Winnipeg and east.

**Daily Loads on Wheels - 4/10/2019**

	E Canada	Prince Rupert	Thunder Bay	USA/MEX	Vancouver	Total
CN	661	1,533	210	260	3,336	6,000
CP	156		442	223	3,828	4,649
Short Line	2				10	12
US Rail				179		179
	819	1,533	652	662	7,174	10,840

**Change in Loads on Wheels - Prior 24 Hours**

	E Canada	Prince Rupert	Thunder Bay	USA/MEX	Vancouver	Total
CN	-13	-4	-39	1	-298	-353
CP	-44		-57	-31	-44	-176
Short Line	0				-6	-6
US Rail				-39		-39
	-57	-4	-96	-69	-348	-574

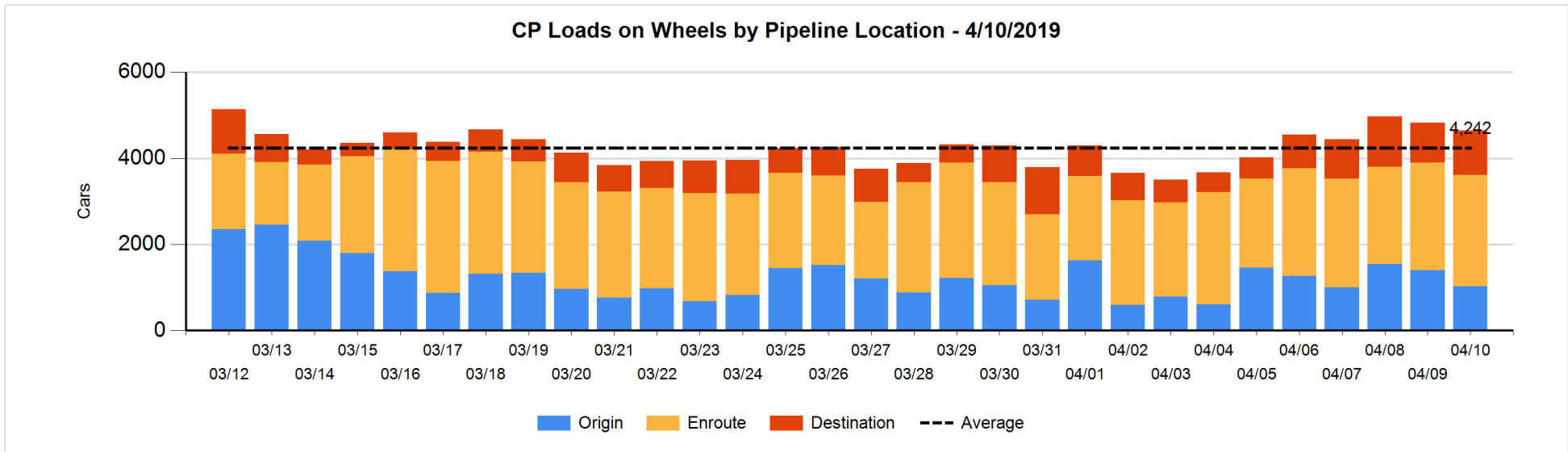
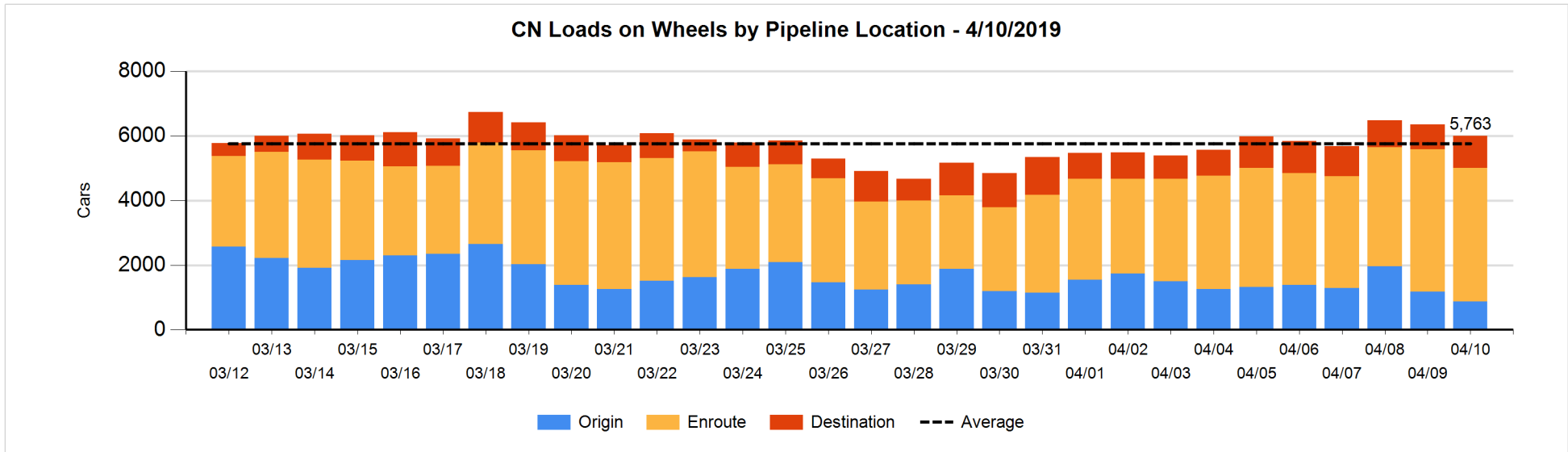


**Daily Loads on Wheels By Pipeline Location - 4/10/2019**

	E Canada	Prince Rupert	Thunder Bay	USA/MEX	Vancouver	Total
CN						
Origin	115	357	49	3	343	867
Enroute	393	989	52	242	2,464	4,140
Destination	153	187	109	15	529	993
	661	1,533	210	260	3,336	6,000
CP						
Origin	6		144	34	845	1,029
Enroute	141		115	155	2,175	2,586
Destination	9		183	34	808	1,034
	156		442	223	3,828	4,649
US Rail / Short Line						
Origin						
Enroute	2			92		94
Destination				87	10	97
	2			179	10	191

**Change in Daily Loads on Wheels By Pipeline Location - Prior 24 Hours**

	E Canada	Prince Rupert	Thunder Bay	USA/MEX	Vancouver	Total
CN						
Origin	30	-91	-3	-3	-247	-314
Enroute	-129	-100	-96	7	51	-267
Destination	86	187	60	-3	-102	228
	-13	-4	-39	1	-298	-353
CP						
Origin	-7		51	-20	-389	-365
Enroute	9		-3	9	61	76
Destination	-46		-105	-20	284	113
	-44		-57	-31	-44	-176
US Rail / Short Line						
Origin						
Enroute	0			-18		-18
Destination				-21	-6	-27
	0			-39	-6	-45

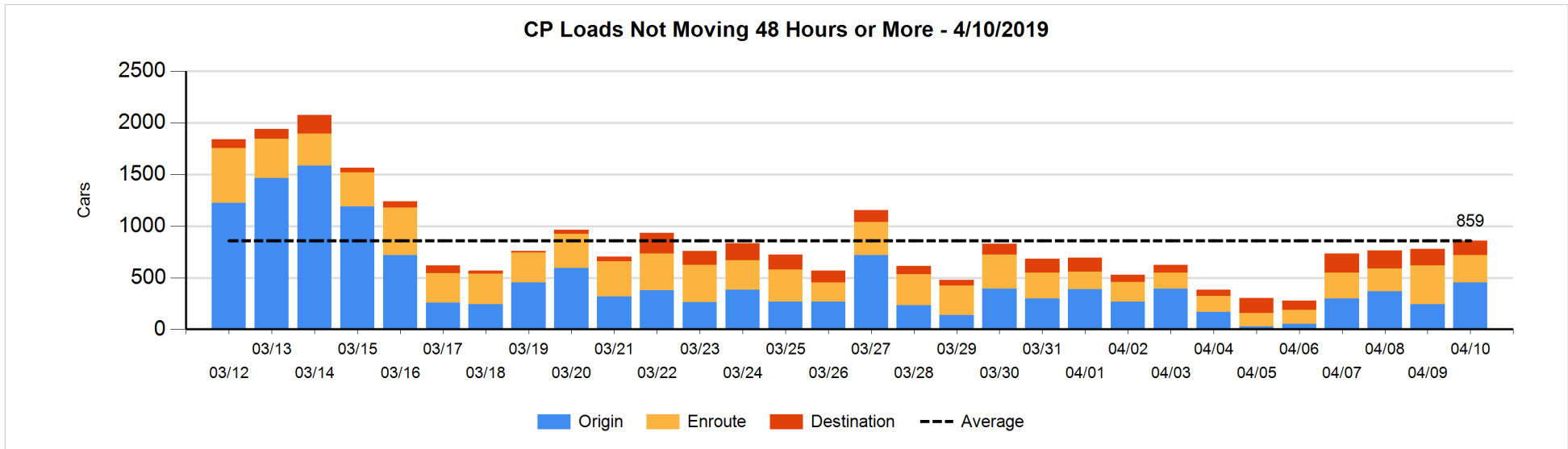
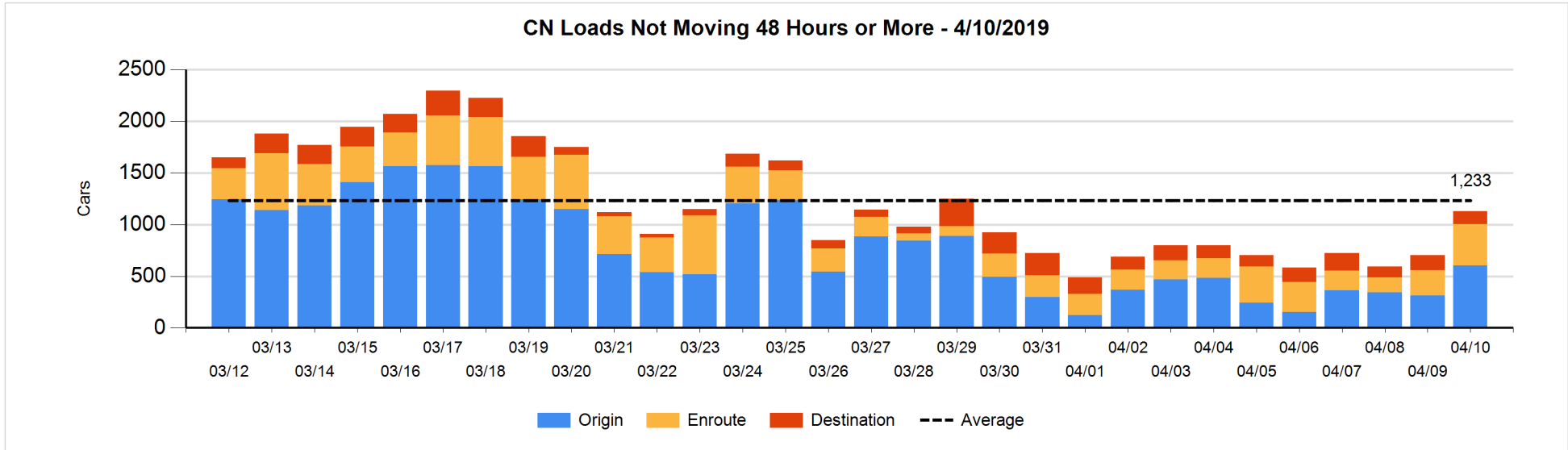


**Loads Not Moving 48 Hours or More - 4/10/2019**

	E Canada	Prince Rupert	Thunder Bay	USA/MEX	Vancouver	Total
CN						
Origin	85	305		3	208	601
Enroute	25	6		19	355	405
Destination	13		3	2	104	122
	123	311	3	24	667	1128
CP						
Origin	1		22	5	424	452
Enroute	9		1	7	250	267
Destination	6		2	11	119	138
	16		25	23	793	857
US Rail / Short Line						
Origin						
Enroute	2			42		44
Destination				55	5	60
	2			97	5	104

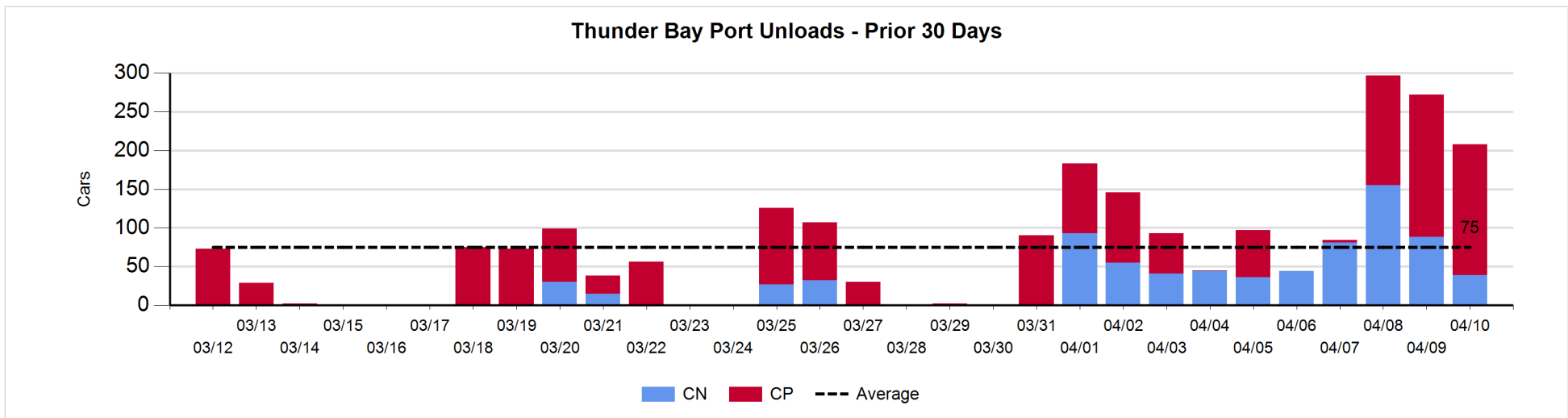
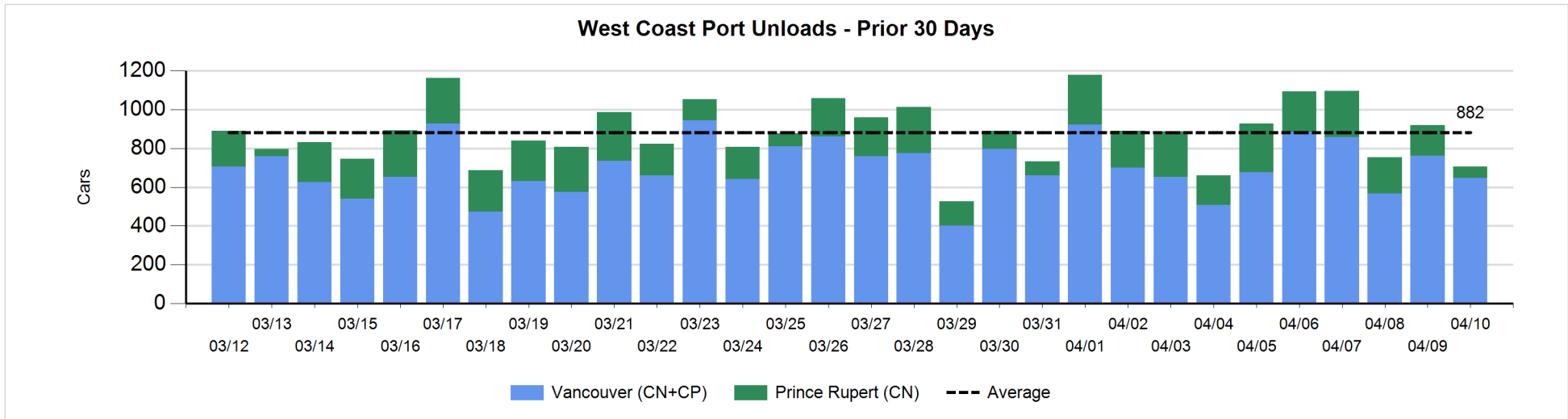
**Change in Loads Not Moving 48 Hours or More - 4/10/2019**

	E Canada	Prince Rupert	Thunder Bay	USA/MEX	Vancouver	Total
CN						
Origin	16	214		0	59	289
Enroute	-12	-2		2	172	160
Destination	-19		-28	-2	23	-26
	-15	212	-28	0	254	423
CP						
Origin	0		-30	1	238	209
Enroute	-2		0	-14	-93	-109
Destination	6		0	0	-28	-22
	4		-30	-13	117	78
US Rail / Short Line						
Origin						
Enroute	0			7		7
Destination				-2	-2	-4
	0			5	-2	3



Port Unloads - 4/10/2019

	Prince Rupert	Vancouver	West Coast Total	Thunder Bay	Total
CN	57	376	433	39	472
CP		272	272	169	441
	57	648	705	208	913





**Port Terminal Status**

**Vancouver**

Daily Activity for 4/10/2019

	Cars Arrived	Cars Received in Interchange	Cars Delivered in Interchange	Cars Placed for Unloading	Loads on Wheels at Destination As of 4/10/2019
CN	167	111	208	339	529
CP	666	204	117	349	808
SRY		10		8	10

**Port Unloads**

	04/10	04/09	Week To Date	Last Week
CN	376	233	849	2,335
CP	272	528	1,126	2,867
SRY	8	10	25	59

**Age Profile of Loaded Cars Waiting Placement for Unloading**

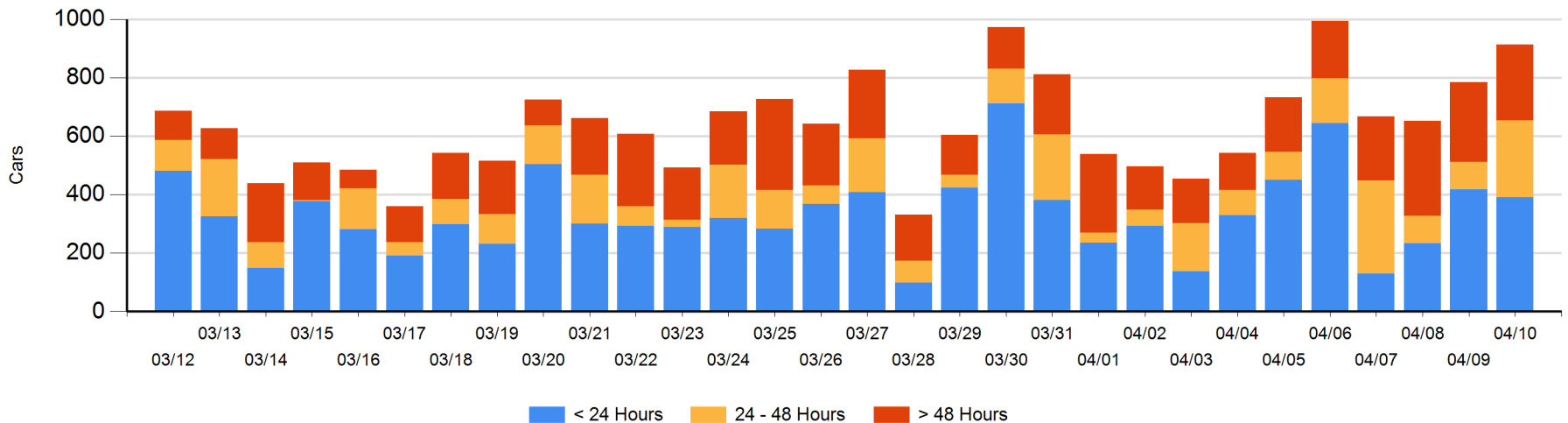
**Today**

	< 24 Hrs	24 - 48 Hrs	> 48-72 Hrs	> 72 Hrs	Total On Hand
CN	93	74	28	113	308
CP	298	189	2	116	605
SRY					0

**Change in Last 24 Hours**

	< 24 Hrs	24-48 Hrs	48 - 72 Hrs	> 72 Hrs
CN	-181	-10	-8	29
CP	155	178	-37	3
SRY				

**Loaded Cars on Hand Vancouver Waiting for Placement - Last 30 Days All Railways**



**Port Terminal Status**

**Prince Rupert**

Daily Activity for 4/10/2019

	Cars Arrived	Cars Received in Interchange	Cars Delivered in Interchange	Cars Placed for Unloading	Loads on Wheels at Destination As of 4/10/2019
CN	244			244	187

**Port Unloads**

	04/10	04/09	Week To Date	Last Week
CN	57	158	403	1,529

**Age Profile of Loaded Cars Waiting Placement for Unloading**

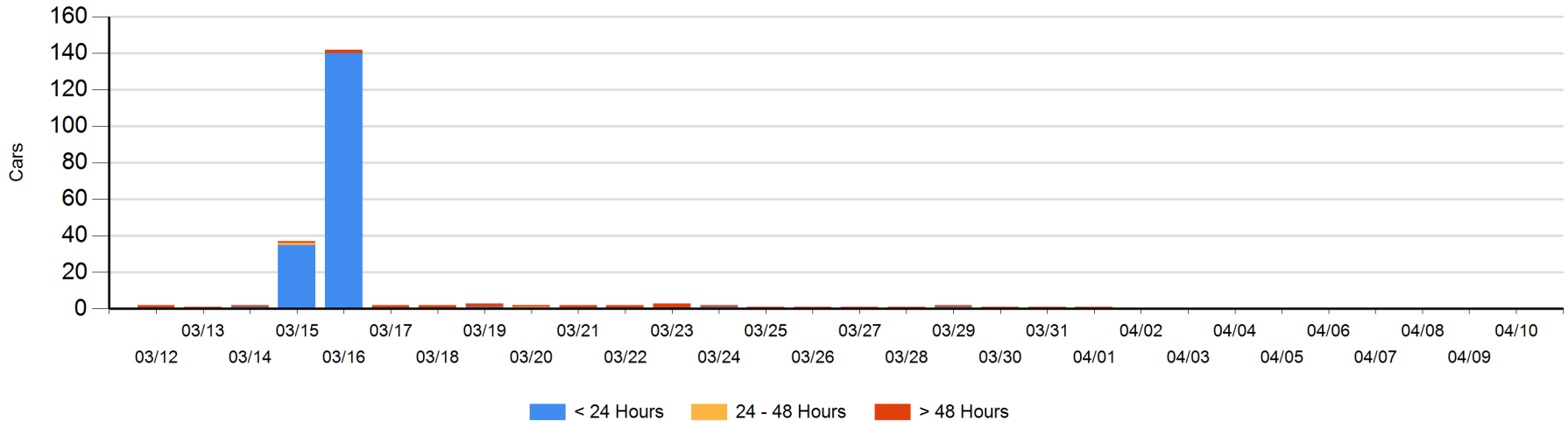
**Today**

	< 24 Hrs	24 - 48 Hrs	> 48-72 Hrs	> 72 Hrs	Total On Hand
CN					0

**Change in Last 24 Hours**

	< 24 Hrs	24-48 Hrs	48 - 72 Hrs	> 72 Hrs
CN				

Loaded Cars on Hand Prince Rupert Waiting for Placement - Last 30 Days All Railways



**Port Terminal Status**

**Thunder Bay**

Daily Activity for 4/10/2019

	Cars Arrived	Cars Received in Interchange	Cars Delivered in Interchange	Cars Placed for Unloading	Loads on Wheels at Destination As of 4/10/2019
CN	99			134	109
CP	64			113	183

**Port Unloads**

	04/10	04/09	Week To Date	Last Week
CN	39	88	282	394
CP	169	184	495	298

**Age Profile of Loaded Cars Waiting Placement for Unloading**

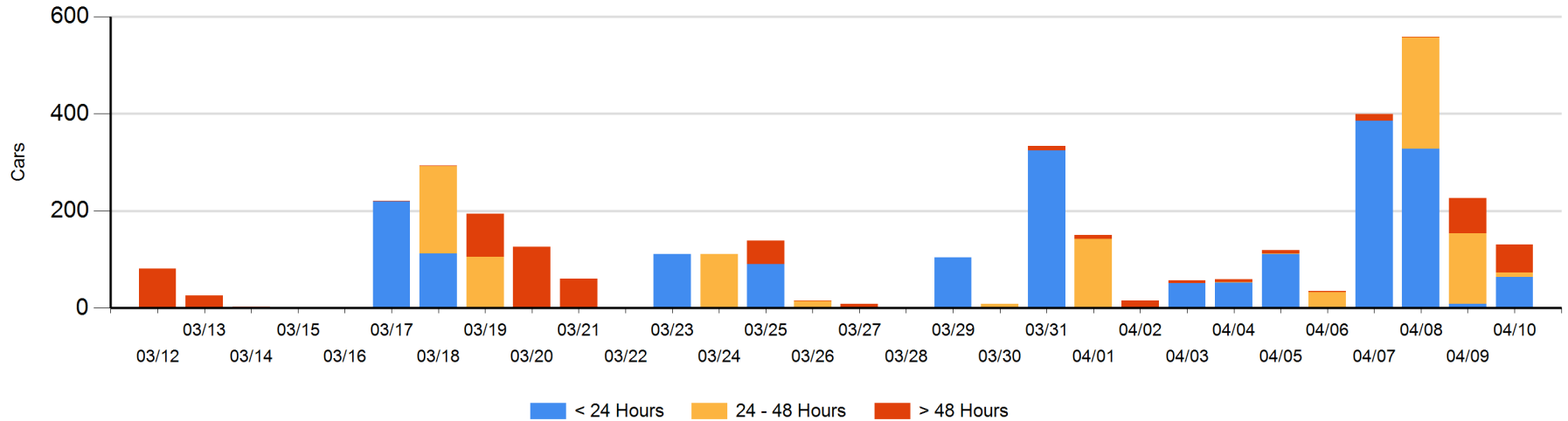
**Today**

	< 24 Hrs	24 - 48 Hrs	> 48-72 Hrs	> 72 Hrs	Total On Hand
CN		1			1
CP	64	8	57	1	130

**Change in Last 24 Hours**

	< 24 Hrs	24-48 Hrs	48 - 72 Hrs	> 72 Hrs
CN	-1	1	-35	
CP	56	-137	20	0

**Loaded Cars on Hand Thunder Bay Waiting for Placement - Last 30 Days All Railways**



## Measurement Definitions

Loads on Wheels	<p>Count of loaded rail cars including all rail cars that have been released loaded at origin and have not been reported by the railway as unloaded at destination.</p> <p>Counts include all rail cars (hopper cars and boxcars) moving within a pipeline.</p>
Loads Not Moving	<p>Loaded rail cars for which the railways have not reported a movement event for 48 hours or more whether the rail car is at origin, enroute or at destination.</p>
Port Unloads	<p>Count of rail cars reported by railways as unloaded at the western port destinations of Vancouver, Prince Rupert and Thunder Bay.</p> <p>Unload counts include all rail cars (hopper cars and boxcars) unloaded by all receivers including major port terminals, transloaders and other receivers.</p>
Cars Arrived	<p>Count of rail cars reported as arrived at the destination railway terminal.</p>
Cars Received in Interchange	<p>Count of rail cars received in interchange by each railway within a destination railway terminal. Interchange activity is tracked for the Vancouver and Thunder Bay pipelines as applicable.</p>
Cars Delivered in Interchange	<p>Count of rail cars delivered in interchange by each railway within a destination railway terminal. Interchange activity is tracked for the Vancouver and Thunder Bay pipelines as applicable.</p>
Cars Placed for Unloading	<p>Count of rail cars reported by the railways as placed loaded at the receiver's facility for unloading.</p>
Loads on Wheels at Destination	<p>Count of rail cars that remain under load within the destination railway terminal including rail cars that have been reported as placed for unloading but not yet reported as unloaded.</p>
Waiting Placement for Unloading	<p>Count of rail cars that have been reported as arrived at the destination railway terminal but not reported as placed for unloading by the railway.</p> <p>For the Ports of Vancouver, Prince Rupert and Thunder Bay the count of rail cars waiting placement for unloading is categorized by age – i.e. the elapsed time from arrival at destination to the current report date.</p>