

SPEED READ

- Loads on wheels decreased overnight, reflecting a decline in both CN and CP volumes. On a net basis, volumes fell due to lower traffic across all corridors other than Thunder Bay.
- Network fluidity deteriorated overnight, led by an increase in idle car counts on both CN and CP by 22% (+207) and 8% (+68), respectively. The total count of cars for 4+ days on both railways increased 7% (+59) overnight and have now increased for the sixth consecutive day - currently at 856 cars.
- Week 37 unloads ended ahead of prior week's performance by fewer than 600 unloads, reflecting improved week over week performance at Thunder Bay and Vancouver offset by reduced unloads at Prince Rupert.

Loads on Wheels

- Loads on wheels decreased 5% (-566) overnight, due to reduced traffic on both CN and CP - combined total at 11,128 and 7% above the trailing 30-day average.
- On a net basis, the decline in loads on wheels indicates lower traffic across all corridors other than Thunder Bay.
- CN volumes decreased 6% (-383) overnight, with lower volumes across all corridors other than Thunder Bay. System wide CN loads on wheels now at 5,929 and 3% above the trailing 30-day average.
- CP volumes declined 5% (-236) overnight, driven by a decline in volumes across all corridors other than Thunder Bay. CP system wide loads on wheels presently at 4,995 and 16% above the trailing 30-day average.
- Vancouver currently at 6,888, declined 7% (-515) overnight, now 13% above the trailing 30-day average.
- The Prince Rupert pipeline presently at 1,501, declined 9% (-144) overnight, and 2% below the trailing 30-day average.
- Thunder Bay volumes rose significantly by 15% (+167) overnight - currently at 1,312, the highest seen in the last 30 days, and 102% above the trailing 30-day average, with 72% of traffic moving on CP.

Hopper Car Rationing

- CN rationed 352 hopper cars in week 36.

Loads Not Moving

- **The count of cars not moving for 48+ hours rose 15% (+275) overnight, reflecting higher counts on both CN and CP. Idle car counts currently at 2,087 and 13% above the trailing 30-day average.**
- CN
 - **The count of idle cars for 48+ hours increased 22% (+207) overnight - currently at 1,168 cars.**
 - The number of cars idle for 4+ days increased 10% (+37) overnight - now at 402 cars.
 - The count of cars not moving for 7+ days fell 2% (-1) overnight - currently at 50 cars.
 - Vancouver represents 44% of all idle cars.
 - In total 22% of all idle cars are dwelling at origin locations.
- CP
 - **CP idle car counts for 48+ hours increased 8% (+68) overnight - now at 919 cars.**
 - The number of cars idle for 4+ days gained 5% (+22) overnight - currently at 454 cars.
 - The number of cars idle for 7+ days increased 32% (+53) overnight and have now increased for the fifth consecutive day - currently at 217 cars.

- Vancouver accounts for 82% of all idle cars.
- In total 29% of all idle cars are dwelling at origin locations.

Port Performance

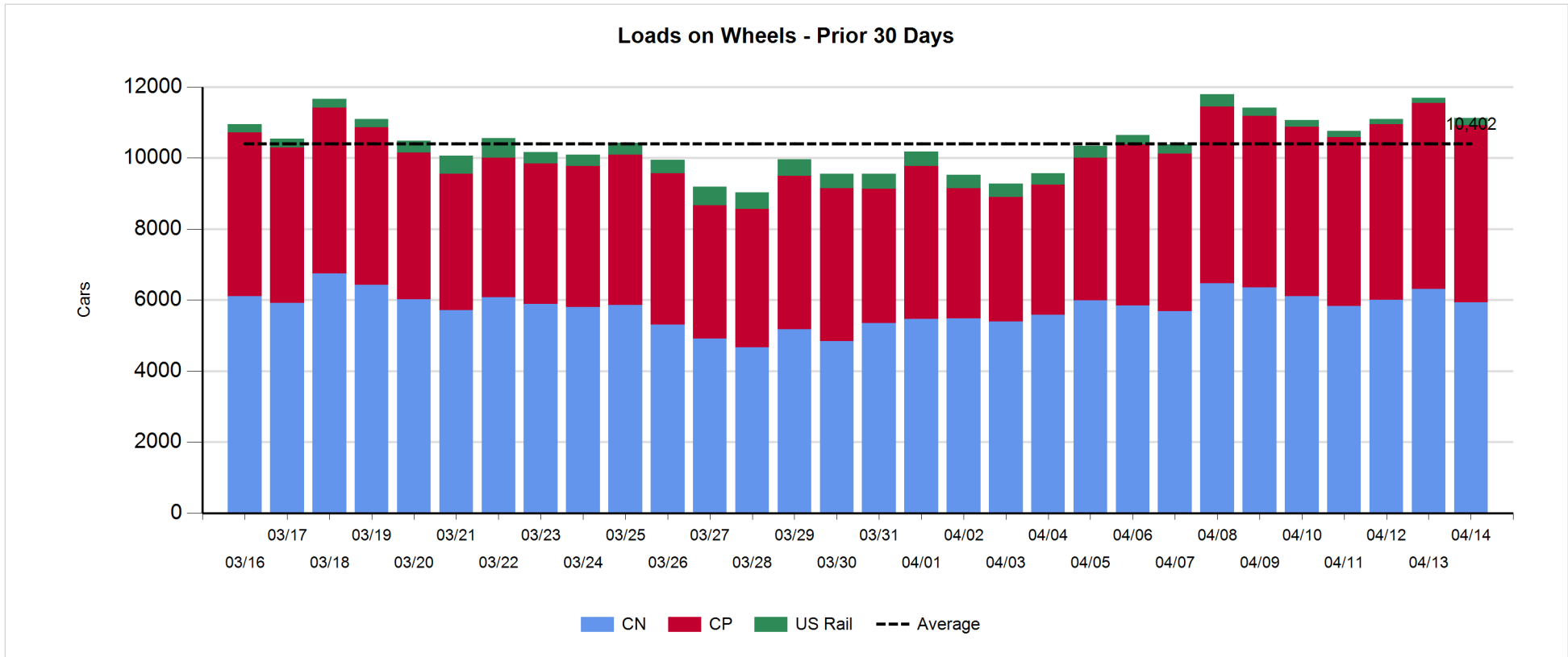
- CN and CP reported a total of 1,318 cars unloaded at the three major ports, now 31% above the trailing 30-day average. Week 37 unloads ended ahead of last week's pace by about 600 unloads, reflecting higher unloads at Thunder Bay and Vancouver offset by reduced unloads at Prince Rupert.
- Vancouver
 - 1,008 unloads, the highest seen in the last 30 days, was reported by CN and CP at the Port of Vancouver; CN - 489 and CP - 519. Week 37 unloads concluded ahead of last week's performance by 300 unloads.
 - There are less than 1,600 cars on site at Vancouver with more than 750 cars arriving at the port in the last 24 hours.
 - CN and CP have less than 2,000 cars in British Columbia en route to Vancouver, with 1,100 cars at Kamloops and west, and 54% of traffic moving on CN.
- Prince Rupert
 - Prince Rupert reported 239 unloads, ended behind last week's unloads by less than 300 unloads.
 - Loads on wheels now above 1,000 cars - currently at 1,501 cars.
 - There are more than 350 cars west of Jasper en route to Prince Rupert.
 - There are more than 200 cars on site at Prince Rupert with less than 200 cars arriving at the port in the last 24 hours.
- Thunder Bay
 - 71 unloads were reported at Thunder Bay yesterday. Week 37 unloads concluded ahead of last week's pace by more than 550 unloads.
 - There are more than 450 cars on site at Thunder Bay with more than 150 cars arriving at the port in the prior 24 hours.
 - There are more than 400 cars en route to Thunder Bay from Winnipeg and east.

Daily Loads on Wheels - 4/14/2019

	E Canada	Prince Rupert	Thunder Bay	USA/MEX	Vancouver	Total
CN	494	1,501	373	311	3,250	5,929
CP	271		939	174	3,611	4,995
Short Line	2				27	29
US Rail				175		175
	767	1,501	1,312	660	6,888	11,128

Change in Loads on Wheels - Prior 24 Hours

	E Canada	Prince Rupert	Thunder Bay	USA/MEX	Vancouver	Total
CN	-48	-144	123	-39	-275	-383
CP	-11		44	-11	-258	-236
Short Line	0				18	18
US Rail				35		35
	-59	-144	167	-15	-515	-566

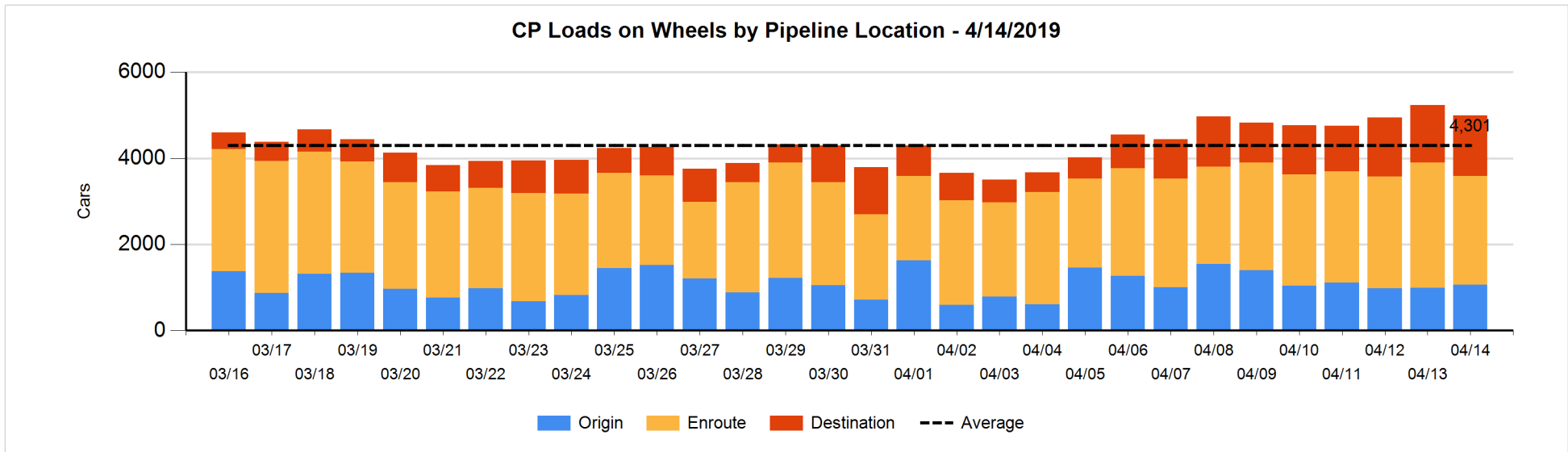
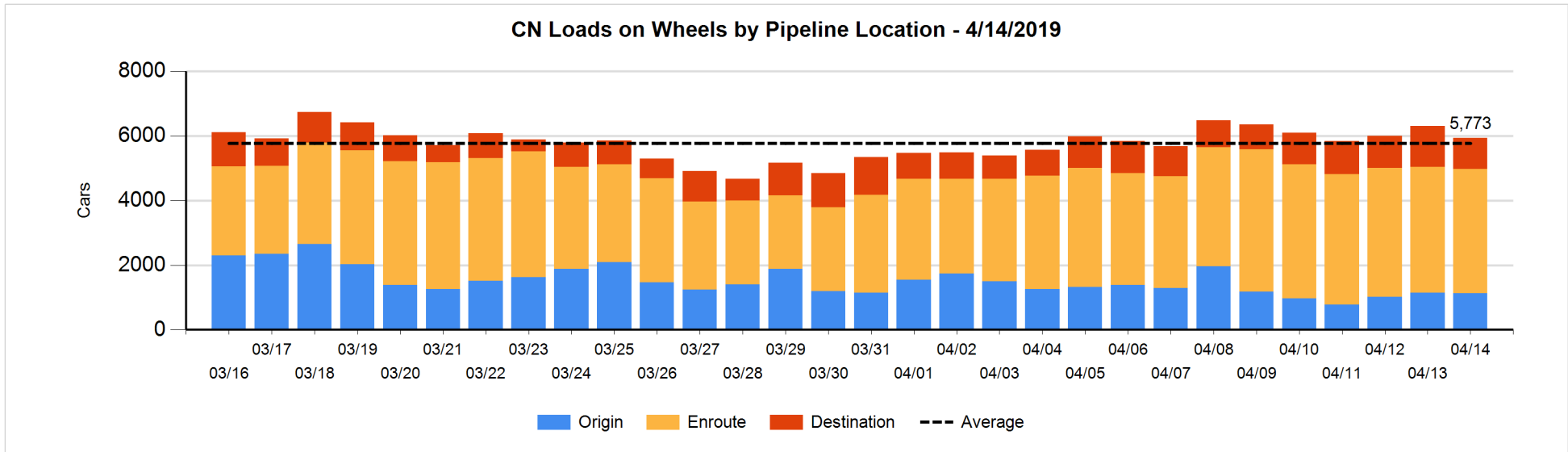


Daily Loads on Wheels By Pipeline Location - 4/14/2019

	E Canada	Prince Rupert	Thunder Bay	USA/MEX	Vancouver	Total
CN						
Origin		506	127	51	451	1,135
Enroute	399	782	200	250	2,205	3,836
Destination	95	213	46	10	594	958
	494	1,501	373	311	3,250	5,929
CP						
Origin	123		12	4	928	1,067
Enroute	130		512	161	1,719	2,522
Destination	18		415	9	964	1,406
	271		939	174	3,611	4,995
US Rail / Short Line						
Origin						
Enroute	2			54		56
Destination				121	27	148
	2			175	27	204

Change in Daily Loads on Wheels By Pipeline Location - Prior 24 Hours

	E Canada	Prince Rupert	Thunder Bay	USA/MEX	Vancouver	Total
CN						
Origin	-3	-31	127	-1	-96	-4
Enroute	-14	-59	1	-38	47	-63
Destination	-31	-54	-5	0	-226	-316
	-48	-144	123	-39	-275	-383
CP						
Origin	-2		-122	-3	206	79
Enroute	-17		58	3	-439	-395
Destination	8		108	-11	-25	80
	-11		44	-11	-258	-236
US Rail / Short Line						
Origin						
Enroute	0			-3		-3
Destination				38	18	56
	0			35	18	53

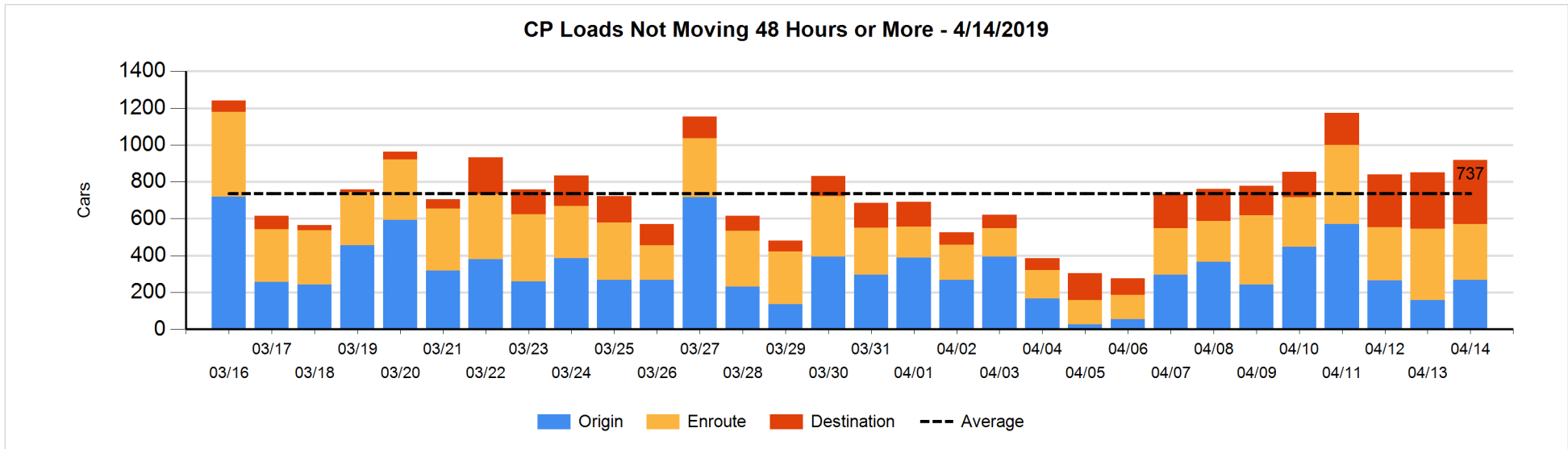
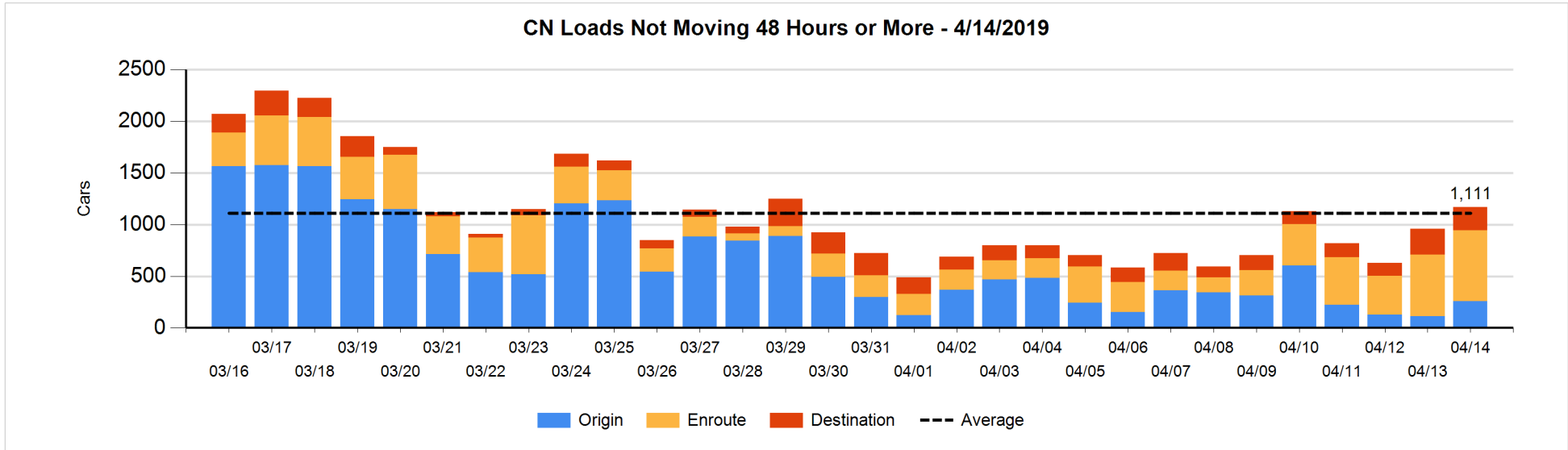


Loads Not Moving 48 Hours or More - 4/14/2019

	E Canada	Prince Rupert	Thunder Bay	USA/MEX	Vancouver	Total
CN						
Origin		205		51		256
Enroute	146	109		26	405	686
Destination	39	51	25	7	104	226
	185	365	25	84	509	1168
CP						
Origin	1		12	4	251	268
Enroute	54		1	8	240	303
Destination	4		68	9	267	348
	59		81	21	758	919
US Rail / Short Line						
Origin						
Enroute	2			38		40
Destination				43	3	46
	2			81	3	86

Change in Loads Not Moving 48 Hours or More - 4/14/2019

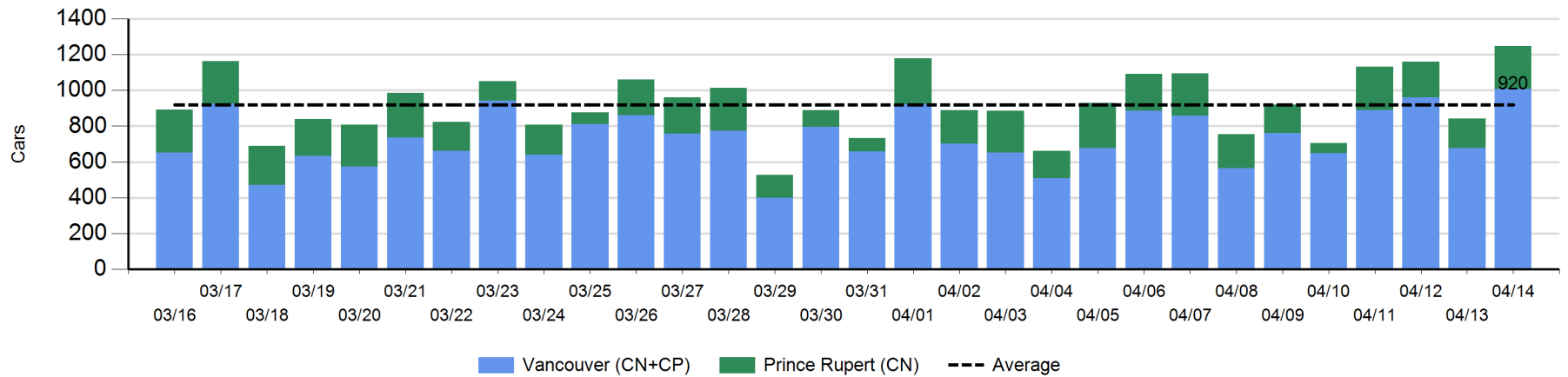
	E Canada	Prince Rupert	Thunder Bay	USA/MEX	Vancouver	Total
CN						
Origin		101		50	-6	145
Enroute	-1	0		2	87	88
Destination	-31	51	21	0	-67	-26
	-32	152	21	52	14	207
CP						
Origin	1		-2	0	110	109
Enroute	37		0	-1	-119	-83
Destination	-2		51	-11	4	42
	36		49	-12	-5	68
US Rail / Short Line						
Origin						
Enroute	0			-2		-2
Destination				-8	1	-7
	0			-10	1	-9



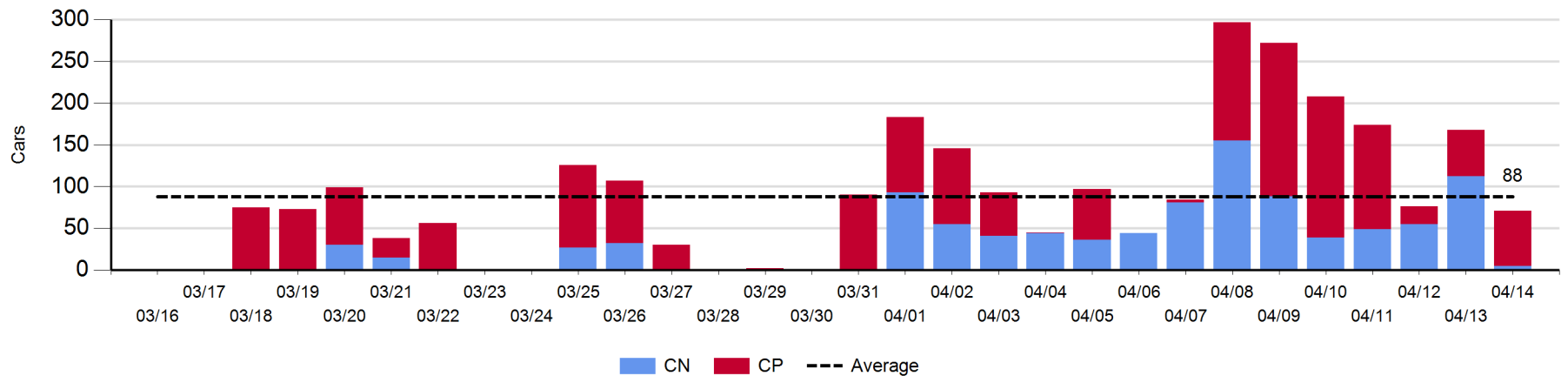
Port Unloads - 4/14/2019

	Prince Rupert	Vancouver	West Coast Total	Thunder Bay	Total
CN	239	489	728	5	733
CP		519	519	66	585
	239	1,008	1,247	71	1,318

West Coast Port Unloads - Prior 30 Days



Thunder Bay Port Unloads - Prior 30 Days



Port Terminal Status

Vancouver

Daily Activity for 4/14/2019

	Cars Arrived	Cars Received in Interchange	Cars Delivered in Interchange	Cars Placed for Unloading	Loads on Wheels at Destination As of 4/14/2019
CN	312	219	173	483	594
CP	466	173	230	515	964
SRY		11			27

Port Unloads

	04/14	04/13	Week To Date	Last Week
CN	489	268	2,435	2,335
CP	519	410	3,077	2,867
SRY		5	45	59

Age Profile of Loaded Cars Waiting Placement for Unloading

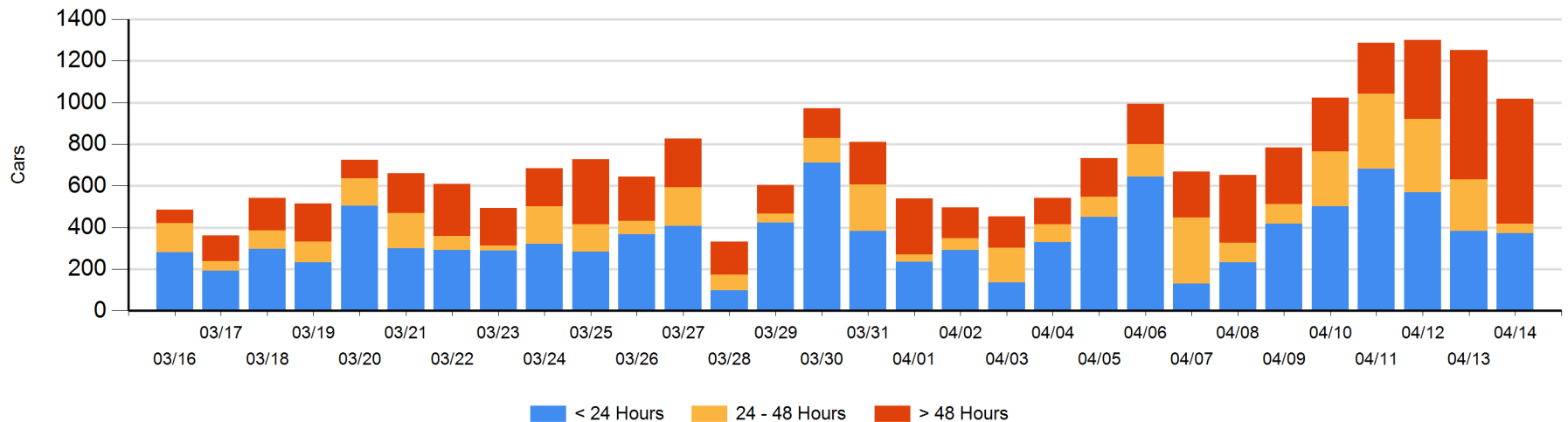
Today

	< 24 Hrs	24 - 48 Hrs	> 48-72 Hrs	> 72 Hrs	Total On Hand
CN	156	40	46	158	400
CP	216	7	147	247	617
SRY					0

Change in Last 24 Hours

	< 24 Hrs	24-48 Hrs	48 - 72 Hrs	> 72 Hrs
CN	-112	-33	-124	73
CP	100	-167	14	15
SRY				

Loaded Cars on Hand Vancouver Waiting for Placement - Last 30 Days All Railways



Port Terminal Status

Prince Rupert

Daily Activity for 4/14/2019

	Cars Arrived	Cars Received in Interchange	Cars Delivered in Interchange	Cars Placed for Unloading	Loads on Wheels at Destination As of 4/14/2019
CN	185			185	213

Port Unloads

	04/14	04/13	Week To Date	Last Week
CN	239	164	1,246	1,529

Age Profile of Loaded Cars Waiting Placement for Unloading

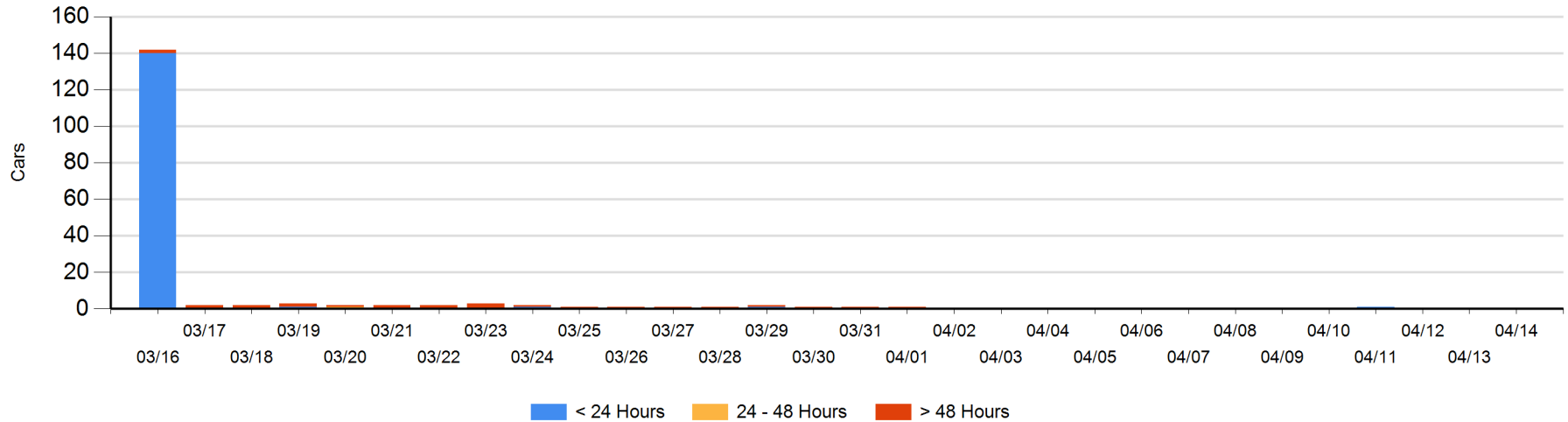
Today

	< 24 Hrs	24 - 48 Hrs	> 48-72 Hrs	> 72 Hrs	Total On Hand
CN					0

Change in Last 24 Hours

	< 24 Hrs	24-48 Hrs	48 - 72 Hrs	> 72 Hrs
CN				

Loaded Cars on Hand Prince Rupert Waiting for Placement - Last 30 Days All Railways



Port Terminal Status

Thunder Bay

Daily Activity for 4/14/2019

	Cars Arrived	Cars Received in Interchange	Cars Delivered in Interchange	Cars Placed for Unloading	Loads on Wheels at Destination As of 4/14/2019
CN				21	46
CP	174			96	415

Port Unloads

	04/14	04/13	Week To Date	Last Week
CN	5	112	503	394
CP	66	56	763	298

Age Profile of Loaded Cars Waiting Placement for Unloading

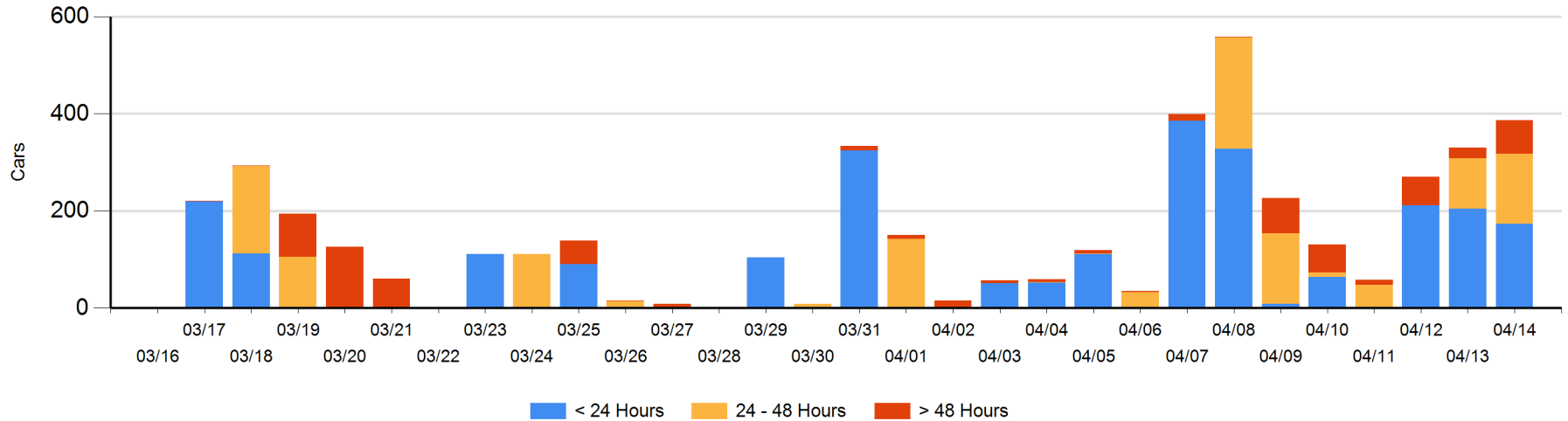
Today

	< 24 Hrs	24 - 48 Hrs	> 48-72 Hrs	> 72 Hrs	Total On Hand
CN			20	1	21
CP	174	143	28	21	366

Change in Last 24 Hours

	< 24 Hrs	24-48 Hrs	48 - 72 Hrs	> 72 Hrs
CN		-41	20	0
CP	-30	80	28	0

Loaded Cars on Hand Thunder Bay Waiting for Placement - Last 30 Days All Railways



Measurement Definitions

Loads on Wheels	<p>Count of loaded rail cars including all rail cars that have been released loaded at origin and have not been reported by the railway as unloaded at destination.</p> <p>Counts include all rail cars (hopper cars and boxcars) moving within a pipeline.</p>
Loads Not Moving	<p>Loaded rail cars for which the railways have not reported a movement event for 48 hours or more whether the rail car is at origin, enroute or at destination.</p>
Port Unloads	<p>Count of rail cars reported by railways as unloaded at the western port destinations of Vancouver, Prince Rupert and Thunder Bay.</p> <p>Unload counts include all rail cars (hopper cars and boxcars) unloaded by all receivers including major port terminals, transloaders and other receivers.</p>
Cars Arrived	<p>Count of rail cars reported as arrived at the destination railway terminal.</p>
Cars Received in Interchange	<p>Count of rail cars received in interchange by each railway within a destination railway terminal. Interchange activity is tracked for the Vancouver and Thunder Bay pipelines as applicable.</p>
Cars Delivered in Interchange	<p>Count of rail cars delivered in interchange by each railway within a destination railway terminal. Interchange activity is tracked for the Vancouver and Thunder Bay pipelines as applicable.</p>
Cars Placed for Unloading	<p>Count of rail cars reported by the railways as placed loaded at the receiver's facility for unloading.</p>
Loads on Wheels at Destination	<p>Count of rail cars that remain under load within the destination railway terminal including rail cars that have been reported as placed for unloading but not yet reported as unloaded.</p>
Waiting Placement for Unloading	<p>Count of rail cars that have been reported as arrived at the destination railway terminal but not reported as placed for unloading by the railway.</p> <p>For the Ports of Vancouver, Prince Rupert and Thunder Bay the count of rail cars waiting placement for unloading is categorized by age – i.e. the elapsed time from arrival at destination to the current report date.</p>