

## SPEED READ

- Loads on wheels increased overnight, reflecting an increase in both CN and CP volumes. On a net basis, volumes rose due to higher volumes across all corridors other than USA/MEX.
- Network fluidity deteriorated overnight, led by an increase in idle car counts on both CN and CP by 5% (+54) and 31% (+284), respectively. The total count of cars for 4+ days on both railways rose 11% (+98) overnight and have now increased for the seventh consecutive day - currently at 954 cars.
- One day in Week 38 unloads now ahead of prior week's performance by 450 unloads, reflecting improved week over week performance at Vancouver and Prince Rupert offset by lower unloads at Thunder Bay.

---

## Loads on Wheels

- Loads on wheels increased 7% (+752) overnight, due to higher traffic on both CN and CP - combined total at 11,882, the highest seen in the last 30 days, and 14% above the trailing 30-day average.
- On a net basis, the increase in loads on wheels reflects higher volumes across all corridors other than USA/MEX.
- CN volumes increased 5% (+284) overnight, with higher traffic across all corridors other than Vancouver. System wide CN loads on wheels now at 6,198 and 7% above the trailing 30-day average.
- CP volumes increased significantly by 10% (+525) overnight, driven by an increase in volumes in the Vancouver and Thunder Bay corridors offset by a decline in traffic in the USA/MEX and E. Canada corridors. CP system wide loads on wheels presently at 5,537, the highest seen in the last 30 days, and 28% above the trailing 30-day average.
- Vancouver now at 7,099, rose 3% (+211) overnight, now 16% above the trailing 30-day average.
- The Prince Rupert pipeline now at 1,538, gained 2% (+37) overnight, and 1% above the trailing 30-day average.
- Thunder Bay volumes increased significantly by 28% (+362) overnight - now at 1,674, the highest seen in the last 30 days, and 142% above the trailing 30-day average, with 67% of traffic moving on CP.

## Hopper Car Rationing

- CN rationed 352 hopper cars in week 36.

## Loads Not Moving

- **The count of cars not moving for 48+ hours gained 16% (+338) overnight and have now increased for the third consecutive day, marking higher counts on both CN and CP. Idle car counts currently at 2,425 and 33% above the trailing 30-day average.**
- CN
  - **The count of idle cars for 48+ hours increased 5% (+54) overnight and have now increased for the third consecutive day - now at 1,222 cars.**
  - The number of cars idle for 4+ days rose 26% (+106) overnight - now at 508 cars.
  - The count of cars not moving for 7+ days increased significantly by 540% (+270) overnight - now at 320 cars.
  - Vancouver represents 75% of all idle cars.
  - In total 34% of all idle cars are dwelling at origin locations.
- CP
  - **CP idle car counts for 48+ hours increased 31% (+284) overnight and have now increased for the third consecutive day - presently at 1,203 cars, the highest seen in the last 30 days.**

- The number of cars idle for 4+ days decreased 2% (-8) overnight - now at 446 cars.
- The number of cars idle for 7+ days rose 2% (+5) overnight and have now increased for the sixth consecutive day - now at 222 cars.
- Vancouver accounts for 82% of all idle cars.
- In total 51% of all idle cars are dwelling at origin locations.

### **Port Performance**

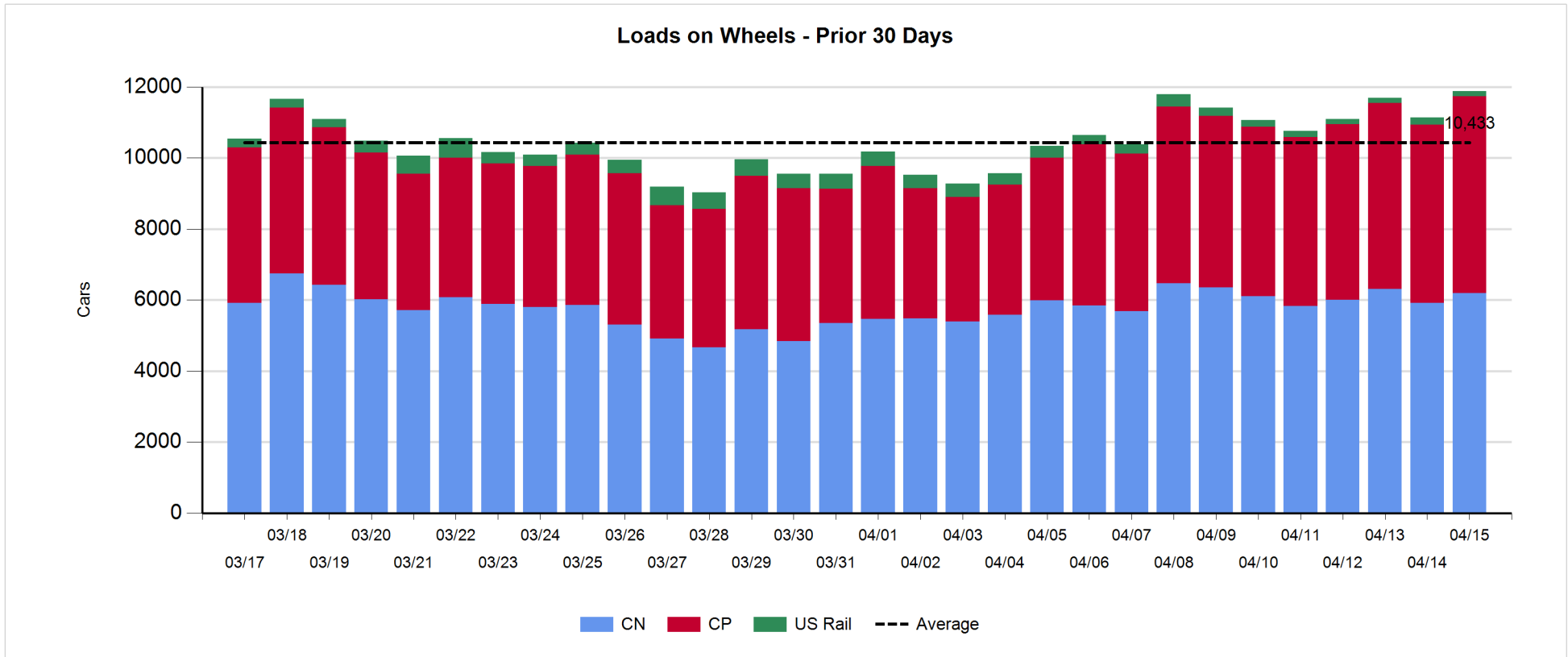
- CN and CP reported a total of 1,495 cars unloaded at the three major ports, the highest seen in the last 30 days, now 45% above the trailing 30-day average. One day in Week 38 unloads now ahead of last week's pace by 450 unloads, reflecting higher unloads at Vancouver and Prince Rupert offset by lower unloads at Thunder Bay.
- Vancouver
  - 968 unloads reported by CN and CP at the Port of Vancouver; CN - 435 and CP - 533. One day in Week 38 unloads are tracking ahead of last week's performance by 400 unloads.
  - There are 1,300 cars on site at Vancouver with 700 cars arriving at the port in the last 24 hours.
  - CN and CP have fewer than 2,350 cars in British Columbia en route to Vancouver, with more than 1,300 cars at Kamloops and west, and 50% of traffic moving on CP.
- Prince Rupert
  - Prince Rupert reported 285 unloads, the highest seen in the last 30 days, now ahead of last week's unloads after one day by 100 unloads.
  - Loads on wheels now above 1,000 cars - currently at 1,538 cars.
  - There are 550 cars west of Jasper en route to Prince Rupert.
  - There are nearly 150 cars on site at Prince Rupert with 200 cars arriving at the port in the last 24 hours.
- Thunder Bay
  - 242 unloads were reported at Thunder Bay yesterday. One day in Week 38 unloads are tracking behind last week's pace by 50 unloads.
  - There are more than 550 cars on site at Thunder Bay with 350 cars arriving at the port in the prior 24 hours.
  - There are more than 450 cars en route to Thunder Bay from Winnipeg and east.

**Daily Loads on Wheels - 4/15/2019**

	E Canada	Prince Rupert	Thunder Bay	USA/MEX	Vancouver	Total
CN	751	1,538	553	334	3,022	6,198
CP	244		1,121	127	4,045	5,537
Short Line					32	32
US Rail				115		115
	995	1,538	1,674	576	7,099	11,882

**Change in Loads on Wheels - Prior 24 Hours**

	E Canada	Prince Rupert	Thunder Bay	USA/MEX	Vancouver	Total
CN	265	37	180	23	-221	284
CP	-37		182	-47	427	525
Short Line	-2				5	3
US Rail				-60		-60
	226	37	362	-84	211	752

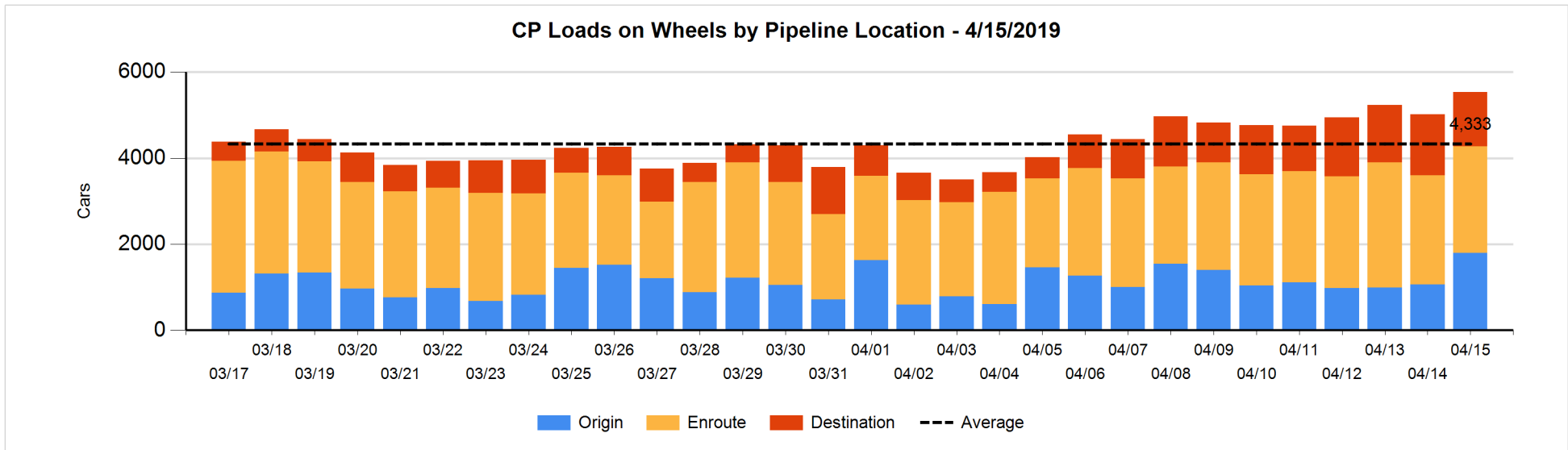
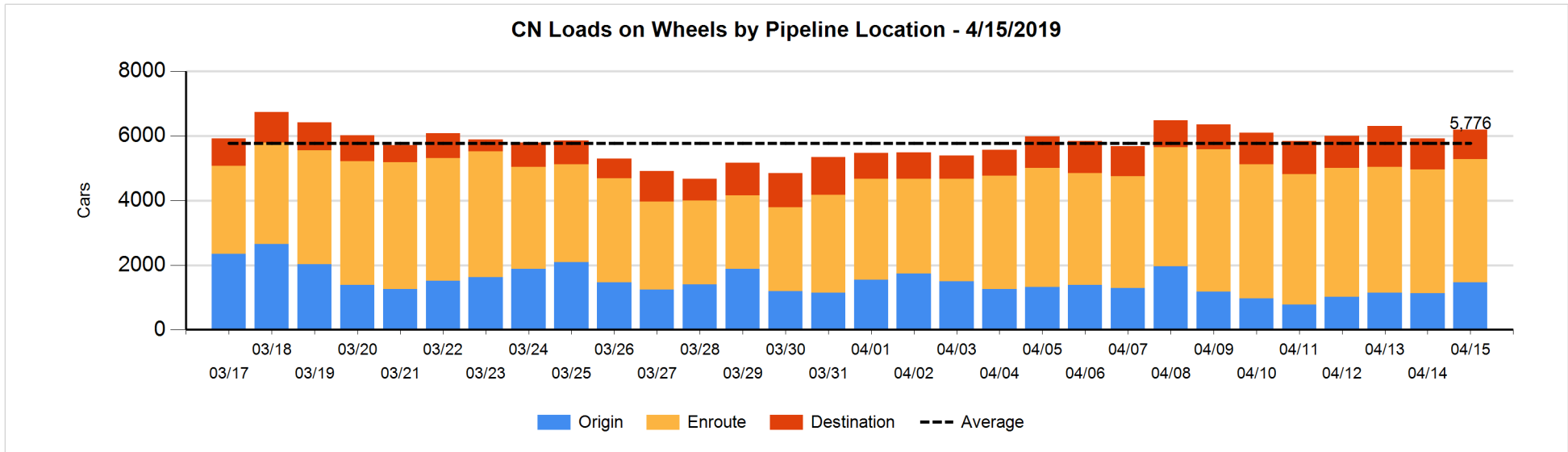


**Daily Loads on Wheels By Pipeline Location - 4/15/2019**

	E Canada	Prince Rupert	Thunder Bay	USA/MEX	Vancouver	Total
CN						
Origin	103	612	101	25	630	1,471
Enroute	549	790	243	261	1,963	3,806
Destination	99	136	209	48	429	921
	751	1,538	553	334	3,022	6,198
CP						
Origin	127		410	4	1,251	1,792
Enroute	94		348	92	1,952	2,486
Destination	23		363	31	842	1,259
	244		1,121	127	4,045	5,537
US Rail / Short Line						
Origin						
Enroute				48		48
Destination				67	32	99
				115	32	147

**Change in Daily Loads on Wheels By Pipeline Location - Prior 24 Hours**

	E Canada	Prince Rupert	Thunder Bay	USA/MEX	Vancouver	Total
CN						
Origin	103	106	-26	-26	179	336
Enroute	158	8	43	11	-242	-22
Destination	4	-77	163	38	-158	-30
	265	37	180	23	-221	284
CP						
Origin	4		398	0	323	725
Enroute	-46		-164	-69	233	-46
Destination	5		-52	22	-129	-154
	-37		182	-47	427	525
US Rail / Short Line						
Origin						
Enroute	-2			-2		-4
Destination				-58	5	-53
	-2			-60	5	-57

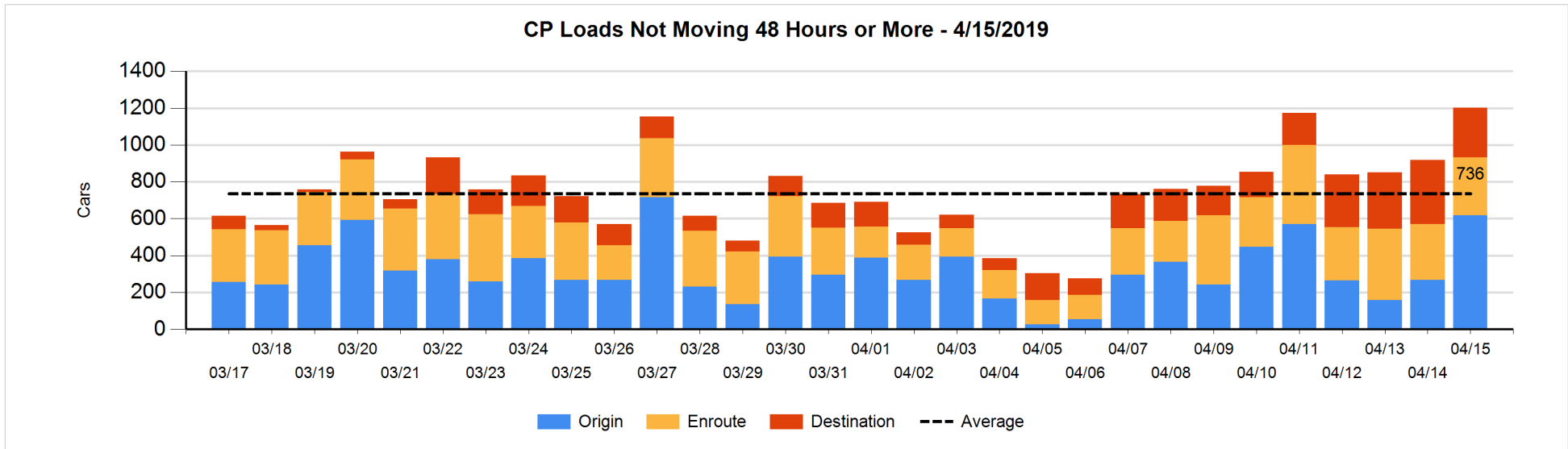
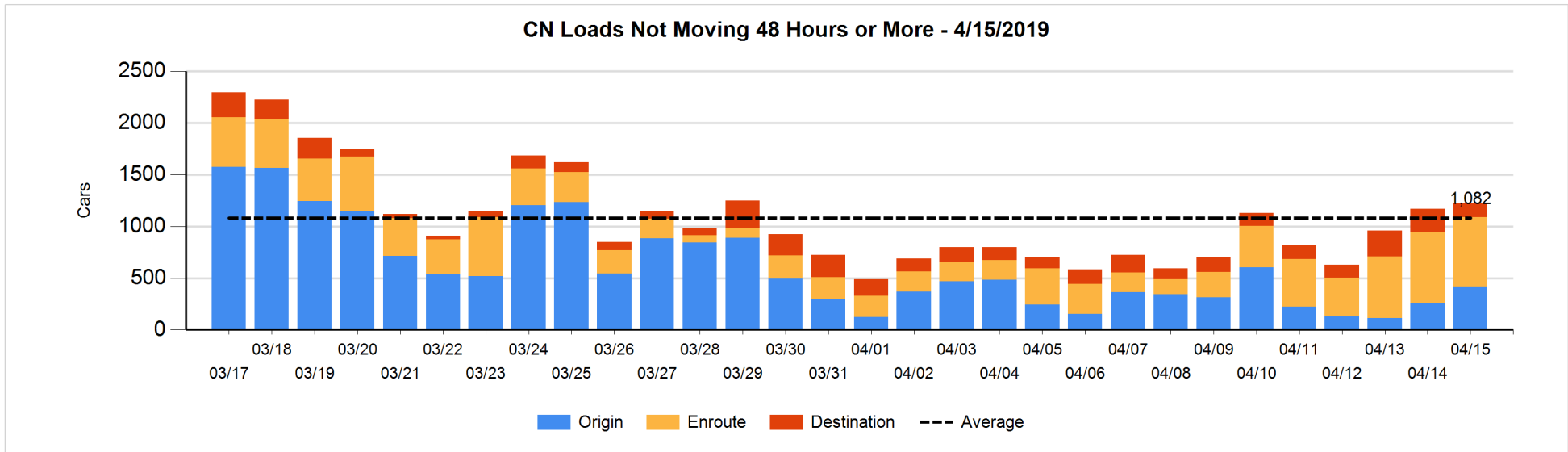


**Loads Not Moving 48 Hours or More - 4/15/2019**

	E Canada	Prince Rupert	Thunder Bay	USA/MEX	Vancouver	Total
<b>CN</b>						
Origin		207		1	212	420
Enroute	39	3		18	608	668
Destination	29	1	3	8	93	134
	68	211	3	27	913	1222
<b>CP</b>						
Origin	113		8	4	494	619
Enroute	6		2	58	247	313
Destination	1		23	4	243	271
	120		33	66	984	1203
<b>US Rail / Short Line</b>						
Origin						
Enroute				35		35
Destination				38	8	46
				73	8	81

**Change in Loads Not Moving 48 Hours or More - 4/15/2019**

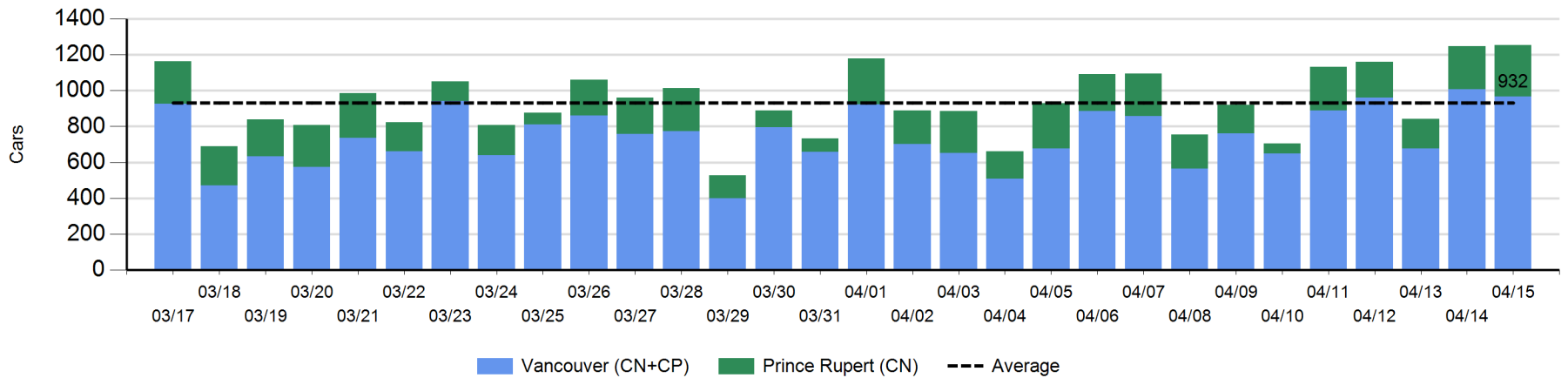
	E Canada	Prince Rupert	Thunder Bay	USA/MEX	Vancouver	Total
<b>CN</b>						
Origin		2		-50	212	164
Enroute	-107	-106		-8	203	-18
Destination	-10	-50	-22	1	-11	-92
	-117	-154	-22	-57	404	54
<b>CP</b>						
Origin	112		-4	0	243	351
Enroute	-48		1	50	7	10
Destination	-3		-45	-5	-24	-77
	61		-48	45	226	284
<b>US Rail / Short Line</b>						
Origin						
Enroute	-2			-3		-5
Destination				-5	5	0
	-2			-8	5	-5



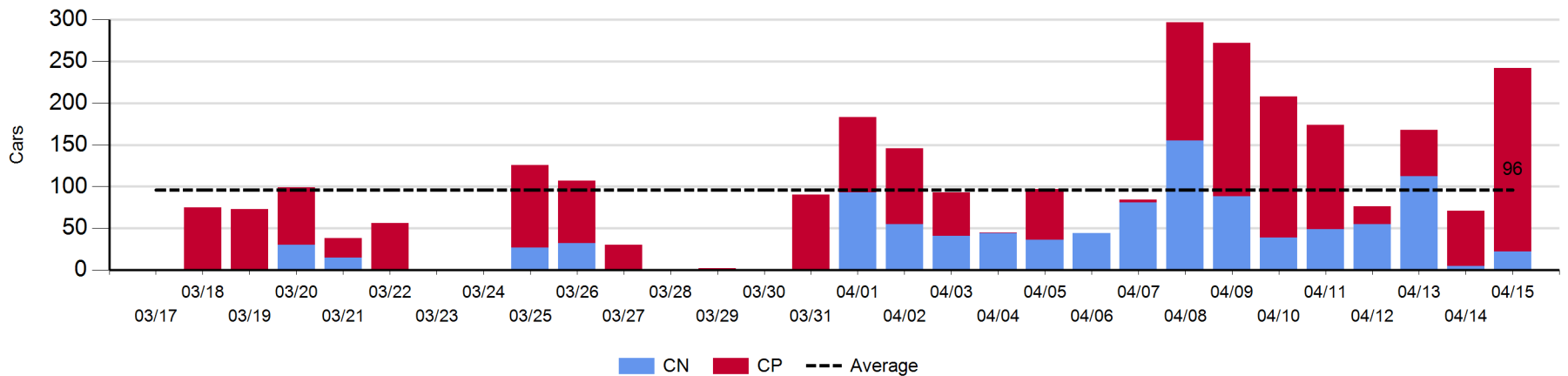
Port Unloads - 4/15/2019

	Prince Rupert	Vancouver	West Coast Total	Thunder Bay	Total
CN	285	435	720	22	742
CP		533	533	220	753
	285	968	1,253	242	1,495

West Coast Port Unloads - Prior 30 Days



Thunder Bay Port Unloads - Prior 30 Days





**Port Terminal Status**

**Vancouver**

Daily Activity for 4/15/2019

	Cars Arrived	Cars Received in Interchange	Cars Delivered in Interchange	Cars Placed for Unloading	Loads on Wheels at Destination As of 4/15/2019
CN	188	130	224	360	429
CP	506	224	142	489	842
SRY		12		8	32

**Port Unloads**

	04/15	04/14	Week To Date	Last Week
CN	435	489	435	2,435
CP	533	519	533	3,077
SRY	8		8	45

**Age Profile of Loaded Cars Waiting Placement for Unloading**

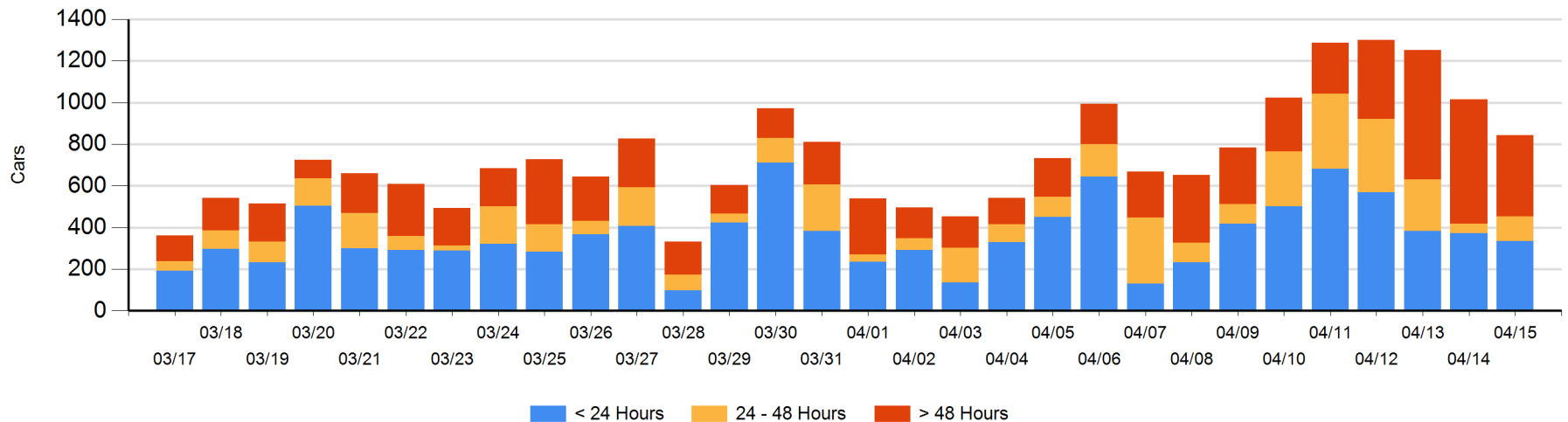
**Today**

	< 24 Hrs	24 - 48 Hrs	> 48-72 Hrs	> 72 Hrs	Total On Hand
CN	28	66	29	90	213
CP	306	53	5	266	630
SRY					0

**Change in Last 24 Hours**

	< 24 Hrs	24-48 Hrs	48 - 72 Hrs	> 72 Hrs
CN	-128	26	-17	-66
CP	90	46	-142	19
SRY				

**Loaded Cars on Hand Vancouver Waiting for Placement - Last 30 Days All Railways**



**Port Terminal Status**

**Prince Rupert**

Daily Activity for 4/15/2019

	Cars Arrived	Cars Received in Interchange	Cars Delivered in Interchange	Cars Placed for Unloading	Loads on Wheels at Destination As of 4/15/2019
CN	207			208	136

**Port Unloads**

	04/15	04/14	Week To Date	Last Week
CN	285	239	285	1,246

**Age Profile of Loaded Cars Waiting Placement for Unloading**

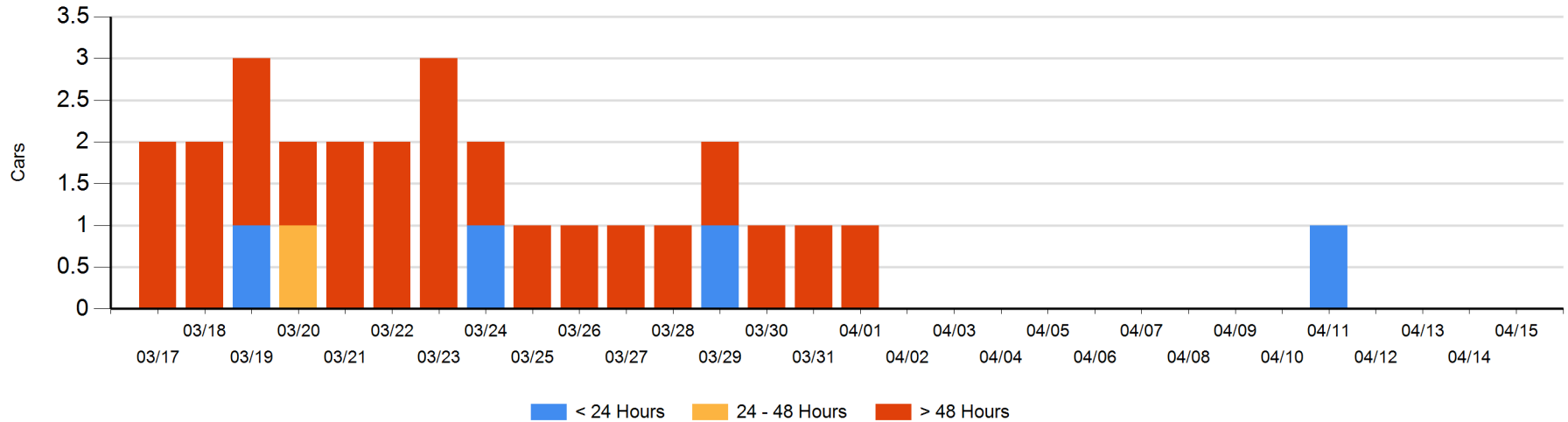
**Today**

	< 24 Hrs	24 - 48 Hrs	> 48-72 Hrs	> 72 Hrs	Total On Hand
CN					0

**Change in Last 24 Hours**

	< 24 Hrs	24-48 Hrs	48 - 72 Hrs	> 72 Hrs
CN				

Loaded Cars on Hand Prince Rupert Waiting for Placement - Last 30 Days All Railways



**Port Terminal Status**

**Thunder Bay**

Daily Activity for 4/15/2019

	Cars Arrived	Cars Received in Interchange	Cars Delivered in Interchange	Cars Placed for Unloading	Loads on Wheels at Destination As of 4/15/2019
CN	185			150	209
CP	168			142	363

**Port Unloads**

	04/15	04/14	Week To Date	Last Week
CN	22	5	22	503
CP	220	66	220	763

**Age Profile of Loaded Cars Waiting Placement for Unloading**

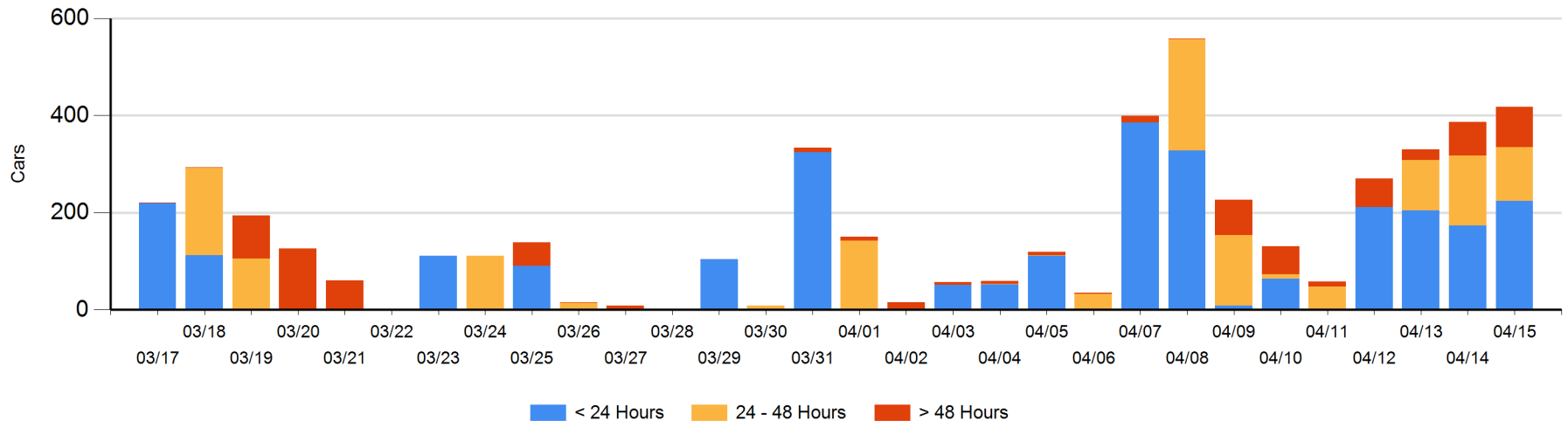
**Today**

	< 24 Hrs	24 - 48 Hrs	> 48-72 Hrs	> 72 Hrs	Total On Hand
CN	56				56
CP	168	111	38	45	362

**Change in Last 24 Hours**

	< 24 Hrs	24-48 Hrs	48 - 72 Hrs	> 72 Hrs
CN	56		-20	-1
CP	-6	-32	10	24

**Loaded Cars on Hand Thunder Bay Waiting for Placement - Last 30 Days All Railways**



## Measurement Definitions

Loads on Wheels	<p>Count of loaded rail cars including all rail cars that have been released loaded at origin and have not been reported by the railway as unloaded at destination.</p> <p>Counts include all rail cars (hopper cars and boxcars) moving within a pipeline.</p>
Loads Not Moving	<p>Loaded rail cars for which the railways have not reported a movement event for 48 hours or more whether the rail car is at origin, enroute or at destination.</p>
Port Unloads	<p>Count of rail cars reported by railways as unloaded at the western port destinations of Vancouver, Prince Rupert and Thunder Bay.</p> <p>Unload counts include all rail cars (hopper cars and boxcars) unloaded by all receivers including major port terminals, transloaders and other receivers.</p>
Cars Arrived	<p>Count of rail cars reported as arrived at the destination railway terminal.</p>
Cars Received in Interchange	<p>Count of rail cars received in interchange by each railway within a destination railway terminal. Interchange activity is tracked for the Vancouver and Thunder Bay pipelines as applicable.</p>
Cars Delivered in Interchange	<p>Count of rail cars delivered in interchange by each railway within a destination railway terminal. Interchange activity is tracked for the Vancouver and Thunder Bay pipelines as applicable.</p>
Cars Placed for Unloading	<p>Count of rail cars reported by the railways as placed loaded at the receiver's facility for unloading.</p>
Loads on Wheels at Destination	<p>Count of rail cars that remain under load within the destination railway terminal including rail cars that have been reported as placed for unloading but not yet reported as unloaded.</p>
Waiting Placement for Unloading	<p>Count of rail cars that have been reported as arrived at the destination railway terminal but not reported as placed for unloading by the railway.</p> <p>For the Ports of Vancouver, Prince Rupert and Thunder Bay the count of rail cars waiting placement for unloading is categorized by age – i.e. the elapsed time from arrival at destination to the current report date.</p>