

SPEED READ

- Loads on wheels increased overnight, marking a rise in both CN and CP volumes. On a net basis, volumes gained due to higher traffic in the Vancouver and Prince Rupert corridors offset by lower traffic in the E. Canada, Thunder Bay and USA/MEX corridors.
- Network fluidity deteriorated overnight, led by an increase in idle car counts on both CN and CP by 39% (+307) and 20% (+159), respectively. The total count of cars for 4+ days on both railways fell marginally by 1% (-4) overnight - presently at 684 cars.
- Week 38 unloads concluded ahead of prior week's performance by 450 unloads, reflecting improved week over week performance at Thunder Bay and Prince Rupert offset by lower unloads at Vancouver.

Loads on Wheels

- Loads on wheels increased 3% (+291) overnight, due to higher volumes on both CN and CP - combined total at 10,670 and 3% above the trailing 30-day average.
- On a net basis, the rise in loads on wheels indicates higher traffic in the Vancouver and Prince Rupert corridors offset by lower traffic in the E. Canada, Thunder Bay and USA/MEX corridors.
- CN volumes increased slightly by 1% (+45) overnight, with higher traffic in the Prince Rupert and Thunder Bay corridors offset by lower volumes in the Vancouver, E. Canada and USA/MEX corridors. System wide CN loads on wheels presently at 5,910 and 3% above the trailing 30-day average.
- CP volumes gained 5% (+241) overnight, driven by a rise in traffic in the Vancouver corridor offset by a decline in volumes in the Thunder Bay, USA/MEX and E. Canada corridors. CP system wide loads on wheels currently at 4,625 and 5% above the trailing 30-day average.
- Vancouver presently at 5,996, rose 4% (+224) overnight, now 2% below the trailing 30-day average.
- The Prince Rupert pipeline currently at 1,927, increased significantly by 10% (+181) overnight, and 26% above the trailing 30-day average.
- Thunder Bay volumes decreased 3% (-46) overnight - currently at 1,442 and 57% above the trailing 30-day average, with 56% of traffic moving on CP.

Hopper Car Rationing

- CN rationed 456 hopper cars in week 36.

Loads Not Moving

- **The count of cars not moving for 48+ hours increased 29% (+466) overnight, reflecting higher counts on both CN and CP. Idle car counts currently at 2,062 and 21% above the trailing 30-day average.**
- CN
 - **The count of idle cars for 48+ hours increased 39% (+307) overnight - presently at 1,096 cars.**
 - The number of cars idle for 4+ days gained 7% (+24) overnight - presently at 345 cars.
 - The count of cars not moving for 7+ days gained significantly by 240% (+108) overnight - currently at 153 cars.
 - Vancouver represents 44% of all idle cars.
 - In total 0% of all idle cars are dwelling at origin locations.
- CP
 - **CP idle car counts for 48+ hours increased 20% (+159) overnight - currently at 966 cars.**
 - The number of cars idle for 4+ days fell 8% (-28) overnight and have now decreased for the fourth consecutive day - currently at 339 cars.
 - The number of cars idle for 7+ days decreased 26% (-74) overnight - presently at 208 cars.

- Vancouver accounts for 79% of all idle cars.
- In total 27% of all idle cars are dwelling at origin locations.

Port Performance

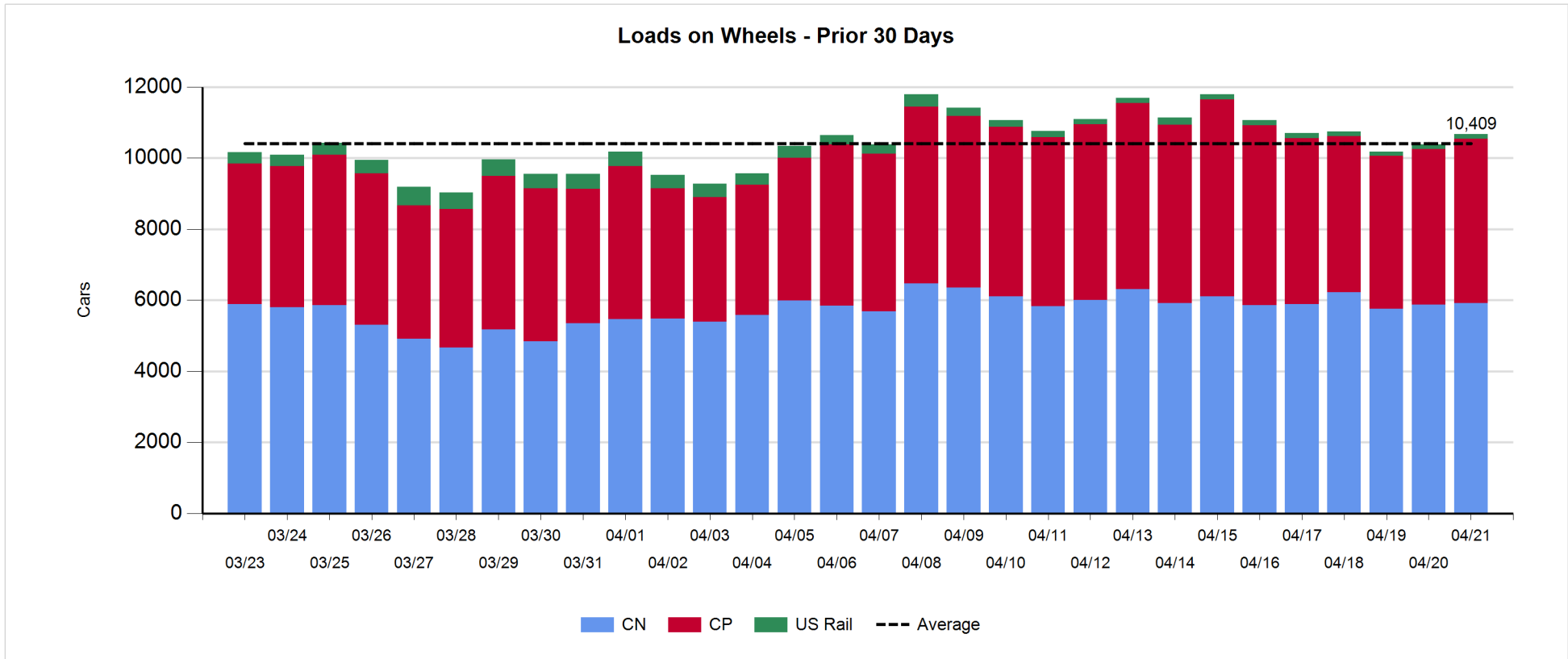
- CN and CP reported a total of 238 cars unloaded at the three major ports, the lowest seen in the last 30 days, now 78% below the trailing 30-day average. Week 38 unloads concluded ahead of last week's pace by 450 unloads, reflecting higher unloads at Thunder Bay and Prince Rupert offset by lower unloads at Vancouver.
- Vancouver
 - 81 unloads, the lowest seen in the last 30 days, was reported by CN and CP at the Port of Vancouver; CN - 53 and CP - 28. Week 38 unloads finished behind last week's performance by more than 300 unloads.
 - There are more than 1,850 cars on site at Vancouver with more than 550 cars arriving at the port in the last 24 hours.
 - CN and CP have more than 1,700 cars in British Columbia en route to Vancouver, with 1,150 cars at Kamloops and west, and 52% of traffic moving on CP.
- Prince Rupert
 - Prince Rupert reported 27 unloads, the lowest seen in the last 30 days, finished ahead of last week's unloads by 100 unloads.
 - Loads on wheels now above 1,000 cars - currently at 1,927 cars.
 - There are more than 650 cars west of Jasper en route to Prince Rupert.
 - There are more than 600 cars on site at Prince Rupert with 300 cars arriving at the port in the last 24 hours.
- Thunder Bay
 - 130 unloads were reported at Thunder Bay yesterday. Week 38 unloads finished ahead of last week's pace by about 700 unloads.
 - There are fewer than 800 cars on site at Thunder Bay with 150 cars arriving at the port in the prior 24 hours.
 - There are 300 cars en route to Thunder Bay from Winnipeg and east.

Daily Loads on Wheels - 4/21/2019

	E Canada	Prince Rupert	Thunder Bay	USA/MEX	Vancouver	Total
CN	626	1,927	631	278	2,448	5,910
CP	181		811	123	3,510	4,625
Short Line					38	38
US Rail				97		97
	807	1,927	1,442	498	5,996	10,670

Change in Loads on Wheels - Prior 24 Hours

	E Canada	Prince Rupert	Thunder Bay	USA/MEX	Vancouver	Total
CN	-63	181	83	-6	-150	45
CP	-1		-129	-2	373	241
Short Line					1	1
US Rail				4		4
	-64	181	-46	-4	224	291

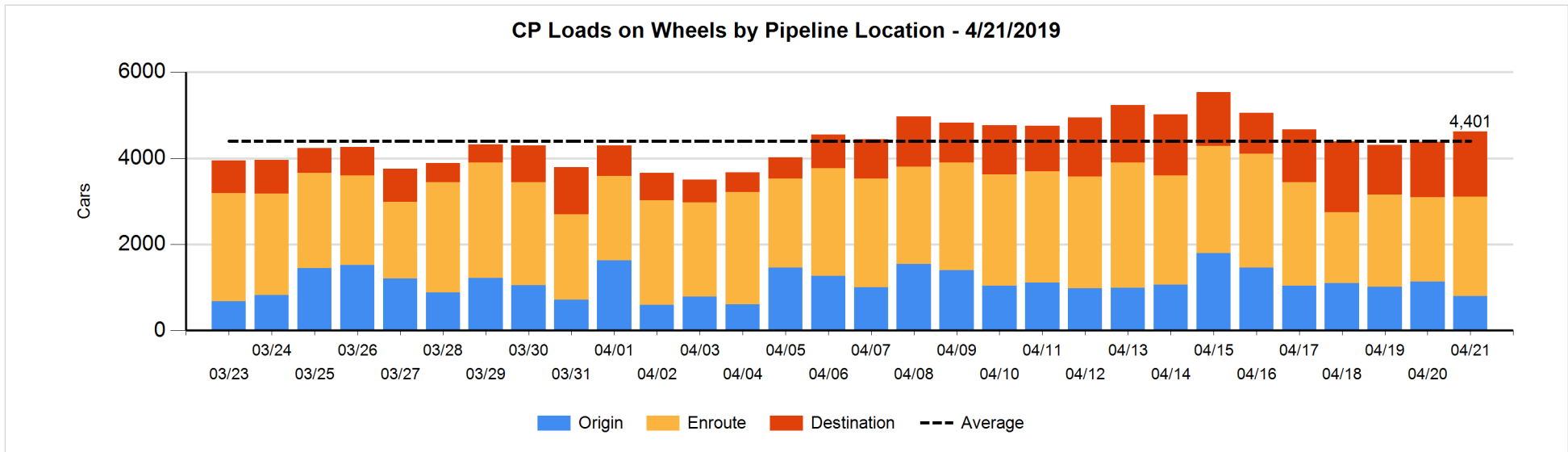
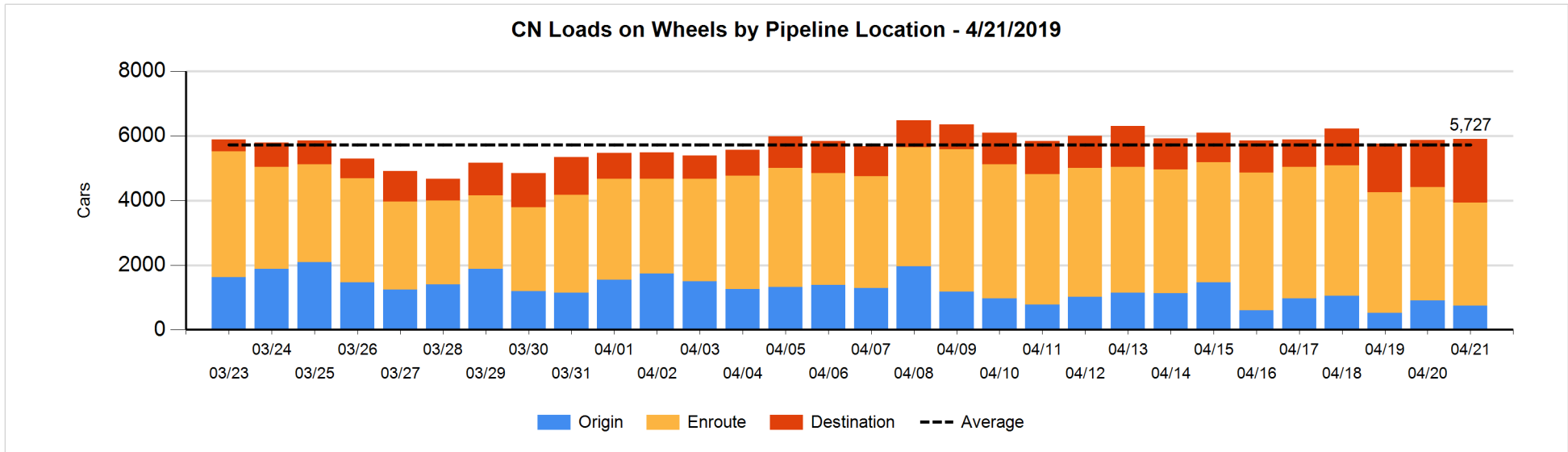


Daily Loads on Wheels By Pipeline Location - 4/21/2019

	E Canada	Prince Rupert	Thunder Bay	USA/MEX	Vancouver	Total
CN						
Origin		209	199	1	333	742
Enroute	441	1,105	15	245	1,393	3,199
Destination	185	613	417	32	722	1,969
	626	1,927	631	278	2,448	5,910
CP						
Origin	9		147	100	543	799
Enroute	149		298	12	1,853	2,312
Destination	23		366	11	1,114	1,514
	181		811	123	3,510	4,625
US Rail / Short Line						
Origin						
Enroute				65		65
Destination				32	38	70
				97	38	135

Change in Daily Loads on Wheels By Pipeline Location - Prior 24 Hours

	E Canada	Prince Rupert	Thunder Bay	USA/MEX	Vancouver	Total
CN						
Origin		-51	84	-25	-175	-167
Enroute	-34	-36	-144	17	-109	-306
Destination	-29	268	143	2	134	518
	-63	181	83	-6	-150	45
CP						
Origin	-10		-114	0	-207	-331
Enroute	9		113	-1	228	349
Destination	0		-128	-1	352	223
	-1		-129	-2	373	241
US Rail / Short Line						
Origin						
Enroute				0		0
Destination				4	1	5
				4	1	5

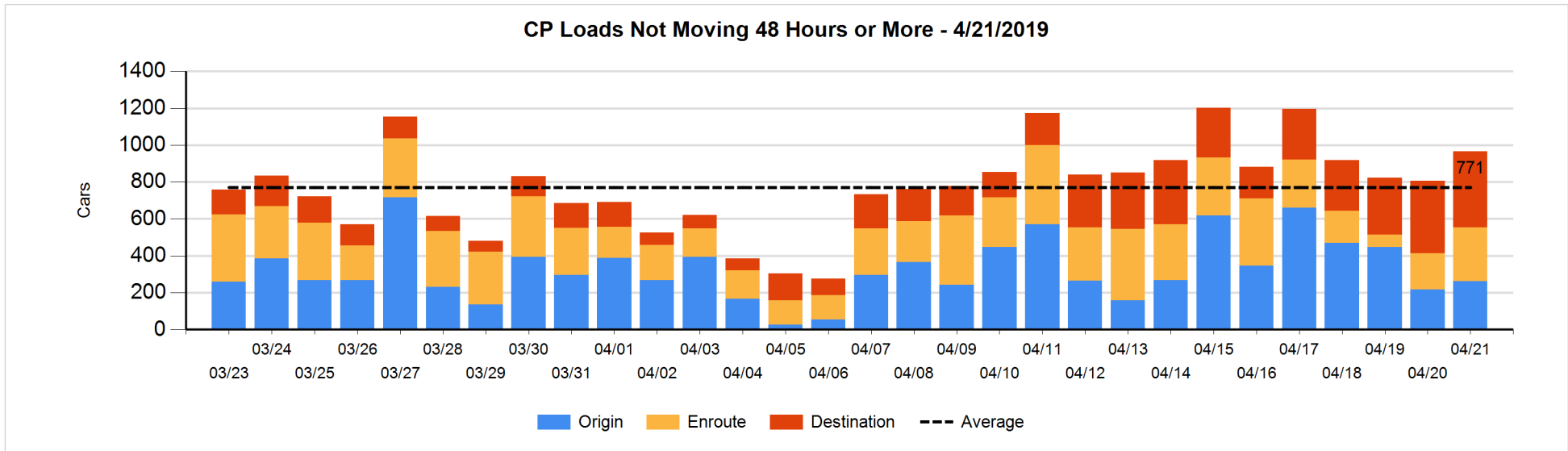
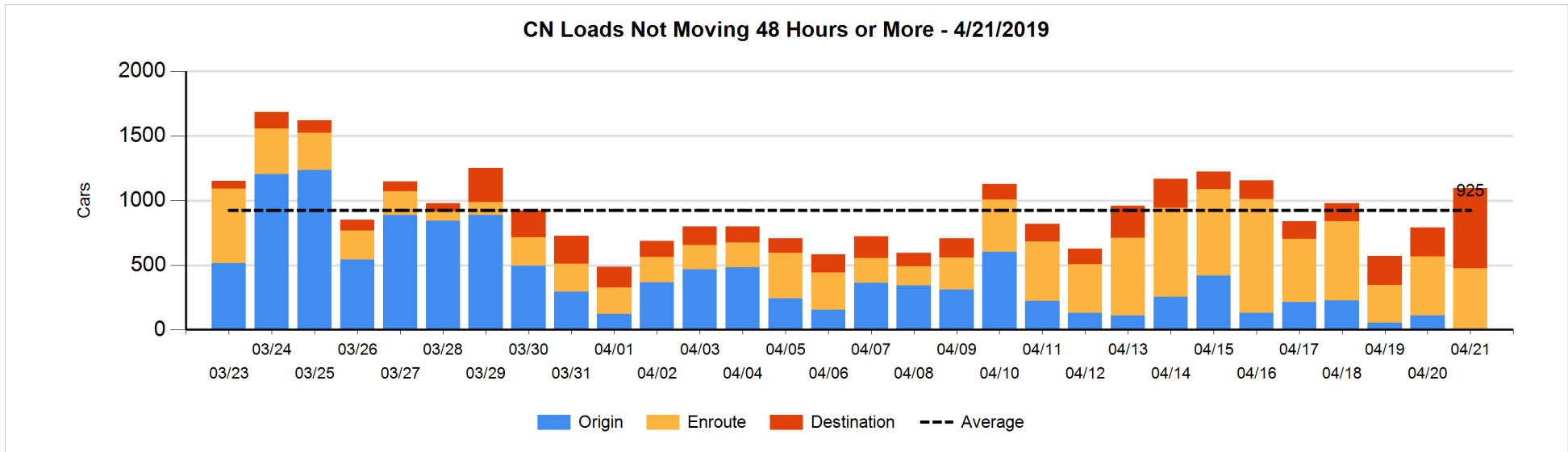


Loads Not Moving 48 Hours or More - 4/21/2019

	E Canada	Prince Rupert	Thunder Bay	USA/MEX	Vancouver	Total
CN						
Origin		1		1		2
Enroute	165	39	1	40	227	472
Destination	75	201	66	30	250	622
	240	241	67	71	477	1096
CP						
Origin			1		262	263
Enroute	5		3	9	274	291
Destination	23		156	9	224	412
	28		160	18	760	966
US Rail / Short Line						
Origin						
Enroute				36		36
Destination				23	24	47
				59	24	83

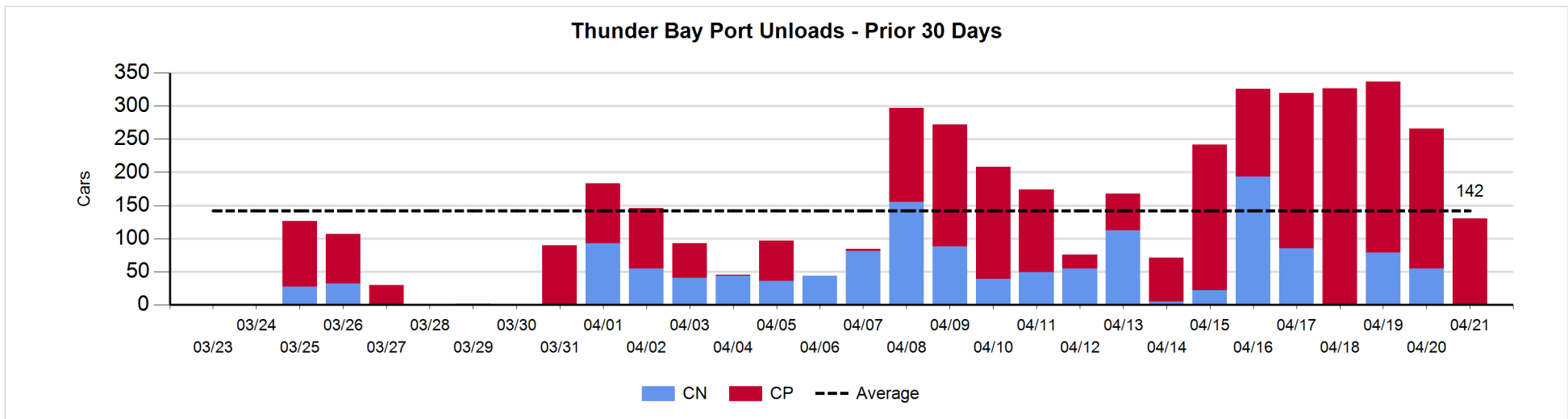
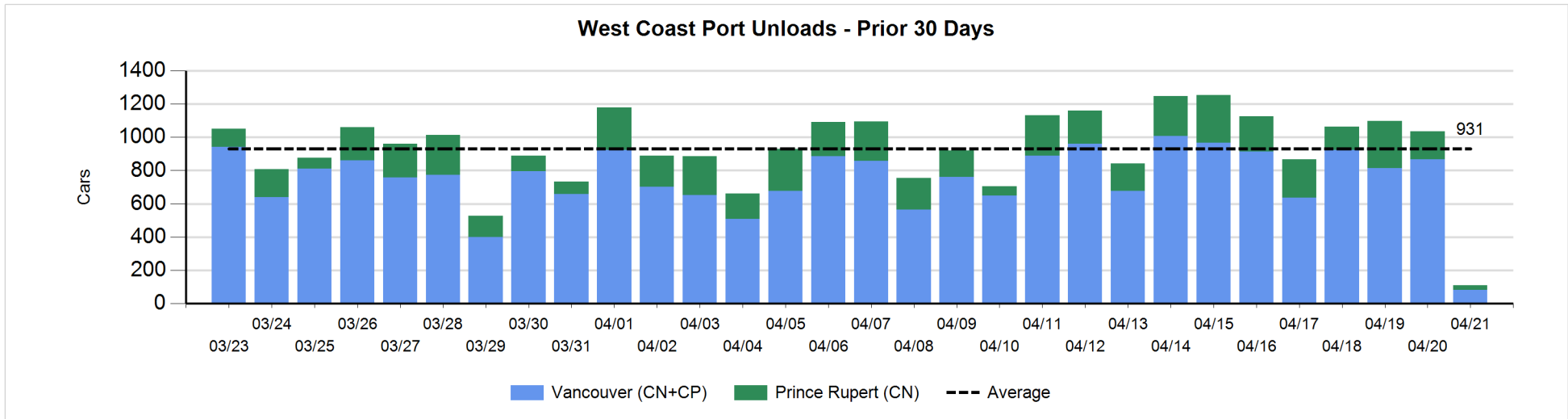
Change in Loads Not Moving 48 Hours or More - 4/21/2019

	E Canada	Prince Rupert	Thunder Bay	USA/MEX	Vancouver	Total
CN						
Origin		-104		0	-4	-108
Enroute	55	-39	1	1	-4	14
Destination	54	104	64	22	157	401
	109	-39	65	23	149	307
CP						
Origin			-2		49	47
Enroute	-2		1	3	92	94
Destination	13		-60	0	65	18
	11		-61	3	206	159
US Rail / Short Line						
Origin						
Enroute				4		4
Destination				-1	2	1
				3	2	5



Port Unloads - 4/21/2019

	Prince Rupert	Vancouver	West Coast Total	Thunder Bay	Total
CN	27	53	80	1	81
CP		28	28	129	157
	27	81	108	130	238



Port Terminal Status

Vancouver

Daily Activity for 4/21/2019

	Cars Arrived	Cars Received in Interchange	Cars Delivered in Interchange	Cars Placed for Unloading	Loads on Wheels at Destination As of 4/21/2019
CN	196	1	121	185	722
CP	372	120	1	89	1,114
SRY		1			38

Port Unloads

	04/21	04/20	Week To Date	Last Week
CN	53	491	2,283	2,435
CP	28	376	2,920	3,077
SRY			27	45

Age Profile of Loaded Cars Waiting Placement for Unloading

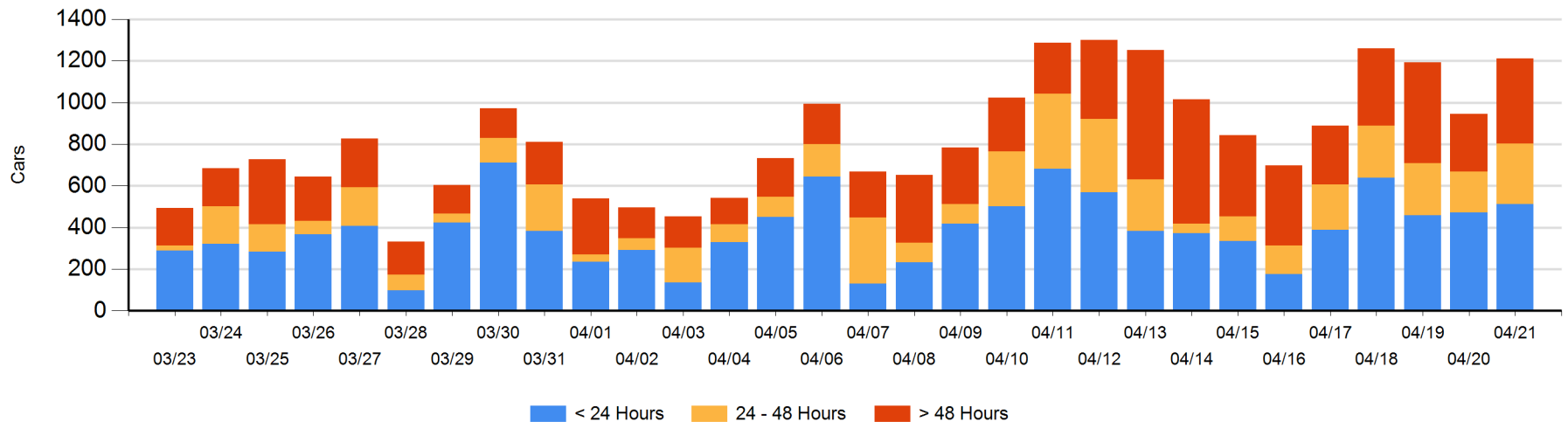
Today

	< 24 Hrs	24 - 48 Hrs	> 48-72 Hrs	> 72 Hrs	Total On Hand
CN	140	60	146	70	416
CP	372	230	38	155	795
SRY					0

Change in Last 24 Hours

	< 24 Hrs	24-48 Hrs	48 - 72 Hrs	> 72 Hrs
CN	85	-94	114	1
CP	-46	188	-37	54
SRY				

Loaded Cars on Hand Vancouver Waiting for Placement - Last 30 Days All Railways



Port Terminal Status

Prince Rupert

Daily Activity for 4/21/2019

	Cars Arrived	Cars Received in Interchange	Cars Delivered in Interchange	Cars Placed for Unloading	Loads on Wheels at Destination As of 4/21/2019
CN	295			322	613

Port Unloads

	04/21	04/20	Week To Date	Last Week
CN	27	168	1,348	1,246

Age Profile of Loaded Cars Waiting Placement for Unloading

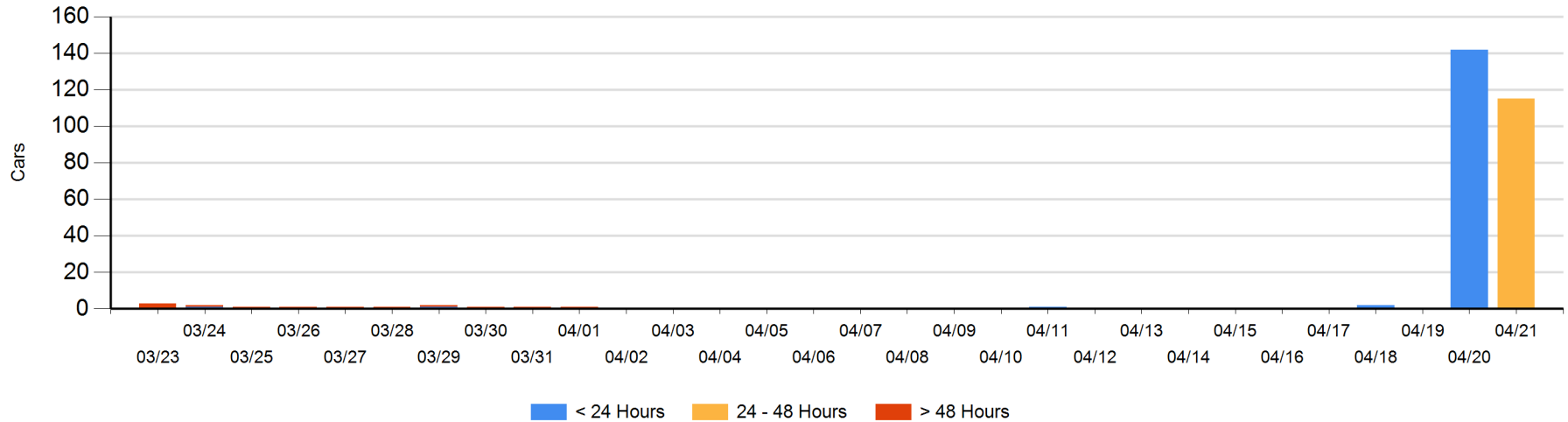
Today

	< 24 Hrs	24 - 48 Hrs	> 48-72 Hrs	> 72 Hrs	Total On Hand
CN		115			115

Change in Last 24 Hours

	< 24 Hrs	24-48 Hrs	48 - 72 Hrs	> 72 Hrs
CN	-142	115		

Loaded Cars on Hand Prince Rupert Waiting for Placement - Last 30 Days All Railways



Port Terminal Status

Thunder Bay

Daily Activity for 4/21/2019

	Cars Arrived	Cars Received in Interchange	Cars Delivered in Interchange	Cars Placed for Unloading	Loads on Wheels at Destination As of 4/21/2019
CN	144			92	417
CP	1			111	366

Port Unloads

	04/21	04/20	Week To Date	Last Week
CN	1	55	436	503
CP	129	211	1,512	763

Age Profile of Loaded Cars Waiting Placement for Unloading

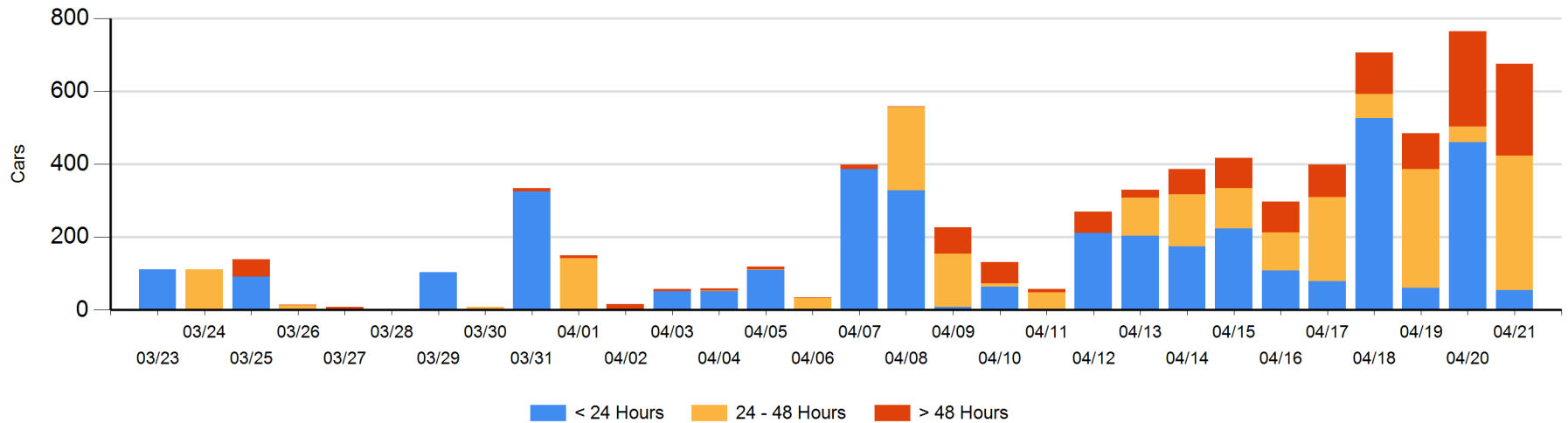
Today

	< 24 Hrs	24 - 48 Hrs	> 48-72 Hrs	> 72 Hrs	Total On Hand
CN	53	205	43	20	321
CP	1	165		188	354

Change in Last 24 Hours

	< 24 Hrs	24-48 Hrs	48 - 72 Hrs	> 72 Hrs
CN	-152	162	43	-1
CP	-254	165	-165	112

Loaded Cars on Hand Thunder Bay Waiting for Placement - Last 30 Days All Railways



Measurement Definitions

Loads on Wheels	<p>Count of loaded rail cars including all rail cars that have been released loaded at origin and have not been reported by the railway as unloaded at destination.</p> <p>Counts include all rail cars (hopper cars and boxcars) moving within a pipeline.</p>
Loads Not Moving	<p>Loaded rail cars for which the railways have not reported a movement event for 48 hours or more whether the rail car is at origin, enroute or at destination.</p>
Port Unloads	<p>Count of rail cars reported by railways as unloaded at the western port destinations of Vancouver, Prince Rupert and Thunder Bay.</p> <p>Unload counts include all rail cars (hopper cars and boxcars) unloaded by all receivers including major port terminals, transloaders and other receivers.</p>
Cars Arrived	<p>Count of rail cars reported as arrived at the destination railway terminal.</p>
Cars Received in Interchange	<p>Count of rail cars received in interchange by each railway within a destination railway terminal. Interchange activity is tracked for the Vancouver and Thunder Bay pipelines as applicable.</p>
Cars Delivered in Interchange	<p>Count of rail cars delivered in interchange by each railway within a destination railway terminal. Interchange activity is tracked for the Vancouver and Thunder Bay pipelines as applicable.</p>
Cars Placed for Unloading	<p>Count of rail cars reported by the railways as placed loaded at the receiver's facility for unloading.</p>
Loads on Wheels at Destination	<p>Count of rail cars that remain under load within the destination railway terminal including rail cars that have been reported as placed for unloading but not yet reported as unloaded.</p>
Waiting Placement for Unloading	<p>Count of rail cars that have been reported as arrived at the destination railway terminal but not reported as placed for unloading by the railway.</p> <p>For the Ports of Vancouver, Prince Rupert and Thunder Bay the count of rail cars waiting placement for unloading is categorized by age – i.e. the elapsed time from arrival at destination to the current report date.</p>