

SPEED READ

- Loads on wheels increased marginally overnight, marking an increase in CN volumes offset by reduced CP volumes. On a net basis, volumes increased due to higher traffic in the Vancouver and USA/MEX corridors offset by reduced traffic in the Thunder Bay, Prince Rupert and E. Canada corridors.
- Network fluidity deteriorated overnight, led by an increase in idle car counts on CN by 33% (+417) offset by a decline in idle car counts on CP by 19% (-203). The total count of cars for 4+ days on both railways gained 10% (+87) overnight - currently at 922 cars.
- Two days in Week 39 unloads now behind prior week's performance by more than 300 unloads, reflecting reduced unloads at Vancouver and Thunder Bay offset by improved week over week performance at Prince Rupert.

Loads on Wheels

- Loads on wheels increased for the fourth consecutive day, up (+59) overnight, due to higher volumes on CN offset by reduced traffic on CP - combined total at 12,038, the highest seen in the last 30 days, and 14% above the trailing 30-day average.
- On a net basis, the rise in loads on wheels indicates higher volumes in the Vancouver and USA/MEX corridors offset by reduced traffic in the Thunder Bay, Prince Rupert and E. Canada corridors.
- CN volumes gained 9% (+548) overnight and have now increased for the fourth consecutive day, with higher traffic in the Vancouver and Thunder Bay corridors offset by lower volumes in the Prince Rupert, E. Canada and USA/MEX corridors. System wide CN loads on wheels currently at 6,574, the highest seen in the last 30 days, and 14% above the trailing 30-day average.
- CP volumes declined 8% (-484) overnight, driven by a decline in traffic across all corridors other than USA/MEX. CP system wide loads on wheels currently at 5,339 and 18% above the trailing 30-day average.
- Vancouver currently at 7,059, increased 6% (+429) overnight and have now increased for the third consecutive day, now 13% above the trailing 30-day average.
- The Prince Rupert pipeline now at 1,767, declined 5% (-87) overnight, and 16% above the trailing 30-day average.
- Thunder Bay volumes fell significantly by 14% (-245) overnight - currently at 1,568 and 55% above the trailing 30-day average, with 65% of traffic moving on CP.

Hopper Car Rationing

- CN rationed 231 hopper cars in week 37.

Loads Not Moving

- **The count of cars not moving for 48+ hours increased for the fourth consecutive day, up 9% (+214) overnight, marking higher counts on CN offset by reduced counts on CP. Idle car counts now at 2,565, the highest seen in the last 30 days, and 50% above the trailing 30-day average.**
- CN
 - **The count of idle cars for 48+ hours increased for the fourth consecutive day, up 33% (+417) overnight - currently at 1,677 cars, the highest seen in the last 30 days.**
 - The number of cars idle for 4+ days increased for the fourth consecutive day, up 36% (+129) overnight - currently at 488 cars.
 - The count of cars not moving for 7+ days gained for the fourth consecutive day, up 5% (+8) overnight - currently at 163 cars.
 - Vancouver represents 41% of all idle cars.
 - In total 13% of all idle cars are dwelling at origin locations.
- CP

- **CP idle car counts for 48+ hours fell 19% (-203) overnight - now at 888 cars.**
- The number of cars idle for 4+ days declined 9% (-42) overnight - currently at 434 cars.
- The number of cars idle for 7+ days decreased for the fourth consecutive day, down 5% (-10) overnight - currently at 195 cars.
- Vancouver accounts for 83% of all idle cars.
- In total 23% of all idle cars are dwelling at origin locations.

Port Performance

- CN and CP reported a total of 1,604 cars unloaded at the three major ports, the highest seen in the last 30 days, now 46% above the trailing 30-day average. Two days in Week 39 unloads now behind last week's pace by more than 300 unloads, reflecting reduced unloads at Vancouver and Thunder Bay offset by higher unloads at Prince Rupert.
- Vancouver
 - 907 unloads reported by CN and CP at the Port of Vancouver; CN - 293 and CP - 614. Two days in Week 39 unloads are tracking behind last week's performance by less than 250 unloads.
 - There are 1,250 cars on site at Vancouver with more than 450 cars arriving at the port in the last 24 hours.
 - CN and CP have more than 1,650 cars in British Columbia en route to Vancouver, with more than 1,150 cars at Kamloops and west, and 54% of traffic moving on CN.
- Prince Rupert
 - Prince Rupert reported 345 unloads, the highest seen in the last 30 days, now ahead of last week's unloads after two days by about 50 unloads.
 - Loads on wheels now above 1,000 cars - now at 1,767 cars.
 - There are 1,050 cars west of Jasper en route to Prince Rupert.
 - There are about 200 cars on site at Prince Rupert with 100 cars arriving at the port in the last 24 hours.
- Thunder Bay
 - 352 unloads, the highest seen in the last 30 days, were reported at Thunder Bay yesterday. Two days in Week 39 unloads are tracking behind last week's pace by more than 100 unloads.
 - There are 750 cars on site at Thunder Bay with more than 200 cars arriving at the port in the prior 24 hours.
 - There are 300 cars en route to Thunder Bay from Winnipeg and east.

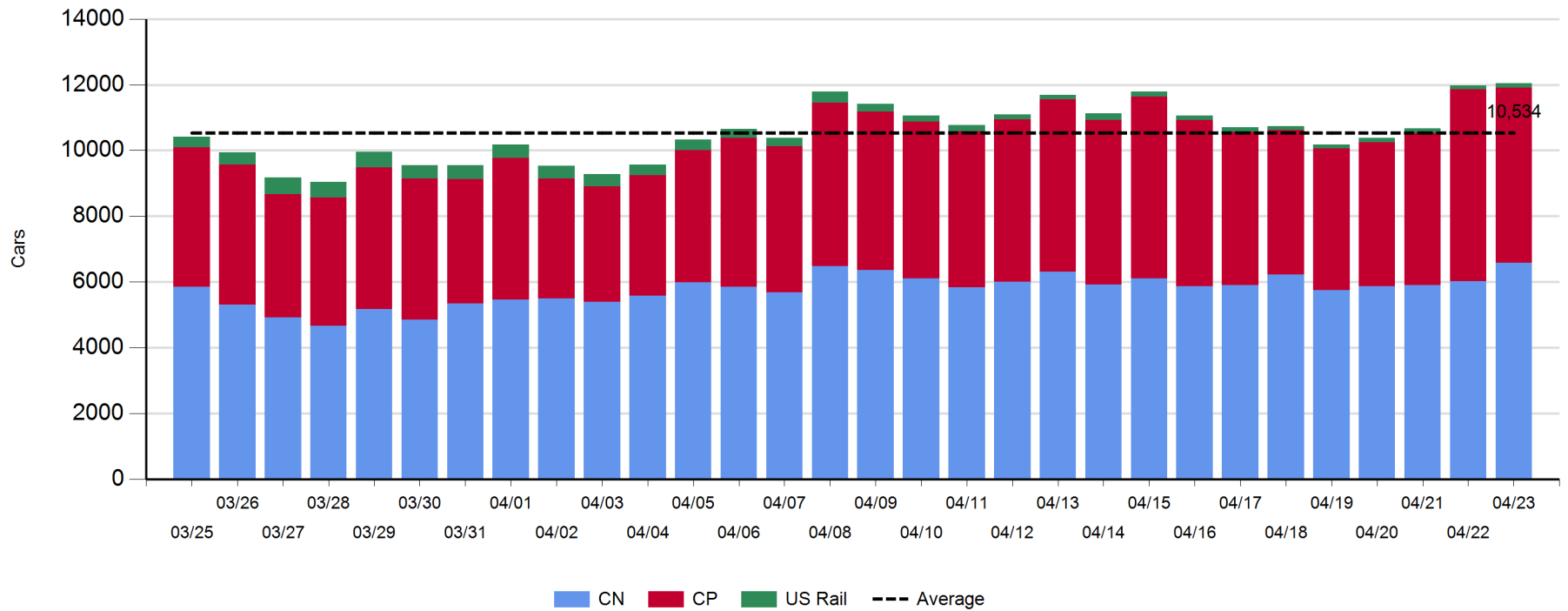
Daily Loads on Wheels - 4/23/2019

	E Canada	Prince Rupert	Thunder Bay	USA/MEX	Vancouver	Total
CN	619	1,767	551	324	3,313	6,574
CP	146		1,017	467	3,709	5,339
Short Line					37	37
US Rail				88		88
	765	1,767	1,568	879	7,059	12,038

Change in Loads on Wheels - Prior 24 Hours

	E Canada	Prince Rupert	Thunder Bay	USA/MEX	Vancouver	Total
CN	-56	-87	11	-6	686	548
CP	-17		-256	42	-253	-484
Short Line	-6				-4	-10
US Rail				5		5
	-79	-87	-245	41	429	59

Loads on Wheels - Prior 30 Days

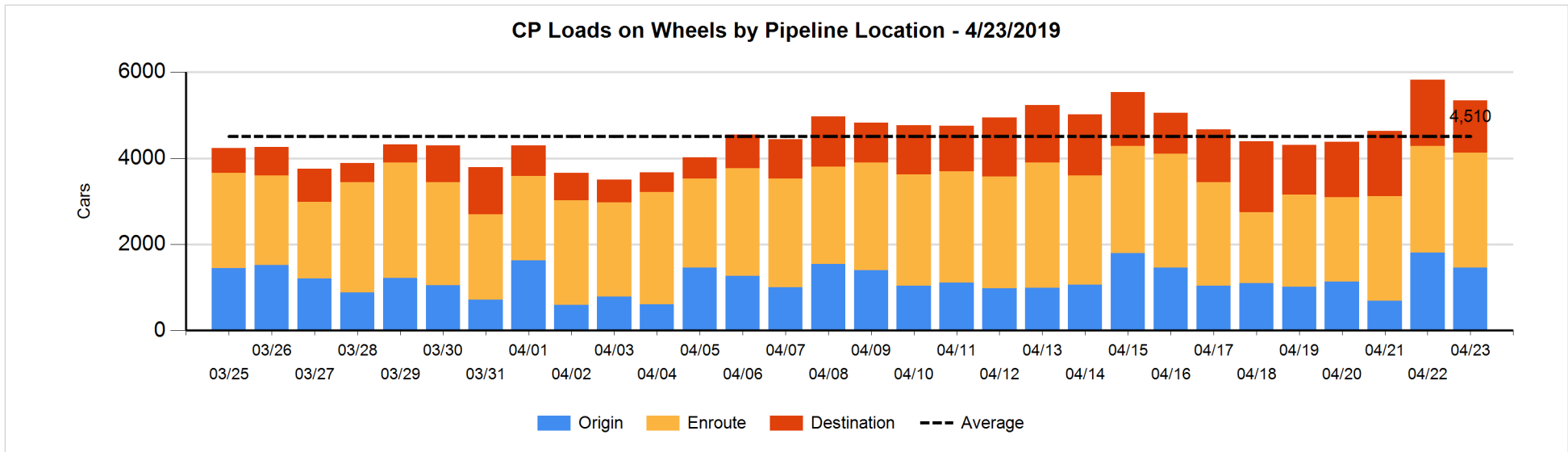
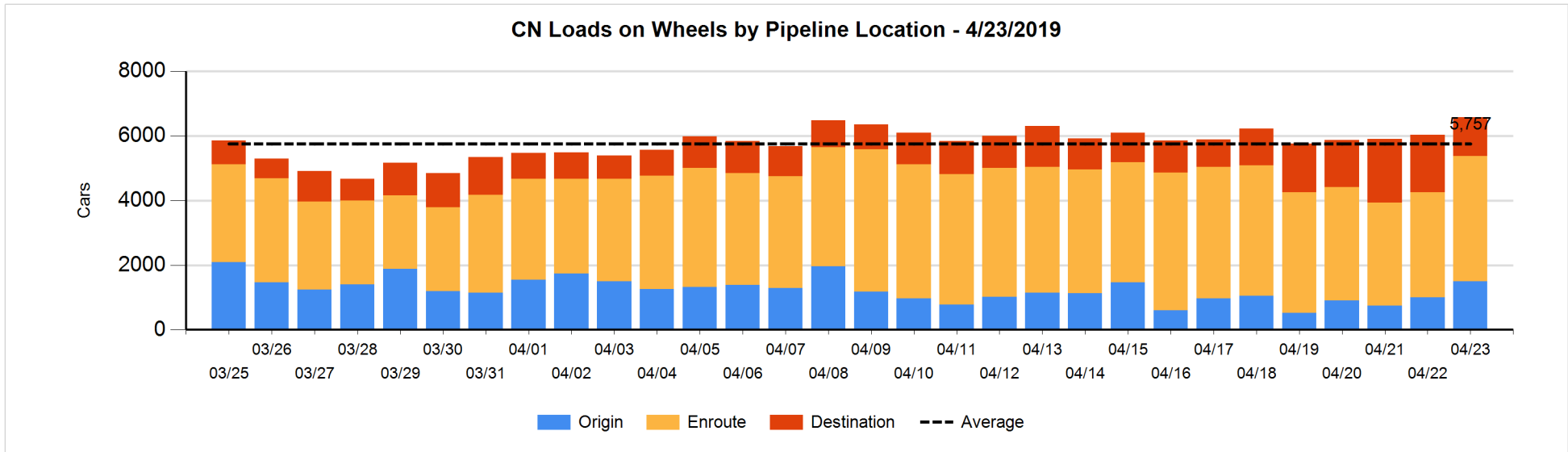


Daily Loads on Wheels By Pipeline Location - 4/23/2019

	E Canada	Prince Rupert	Thunder Bay	USA/MEX	Vancouver	Total
CN						
Origin	33	153	102	2	1,209	1,499
Enroute	363	1,434	204	295	1,579	3,875
Destination	223	180	245	27	525	1,200
	619	1,767	551	324	3,313	6,574
CP						
Origin	1		199	145	1,110	1,455
Enroute	140		307	319	1,902	2,668
Destination	5		511	3	697	1,216
	146		1,017	467	3,709	5,339
US Rail / Short Line						
Origin						
Enroute				54		54
Destination				34	37	71
				88	37	125

Change in Daily Loads on Wheels By Pipeline Location - Prior 24 Hours

	E Canada	Prince Rupert	Thunder Bay	USA/MEX	Vancouver	Total
CN						
Origin	-70	44	102	-2	428	502
Enroute	85	113	0	-2	421	617
Destination	-71	-244	-91	-2	-163	-571
	-56	-87	11	-6	686	548
CP						
Origin	0		-265	-165	74	-356
Enroute	-4		44	209	-49	200
Destination	-13		-35	-2	-278	-328
	-17		-256	42	-253	-484
US Rail / Short Line						
Origin						
Enroute				-3		-3
Destination	-6			8	-4	-2
	-6			5	-4	-5

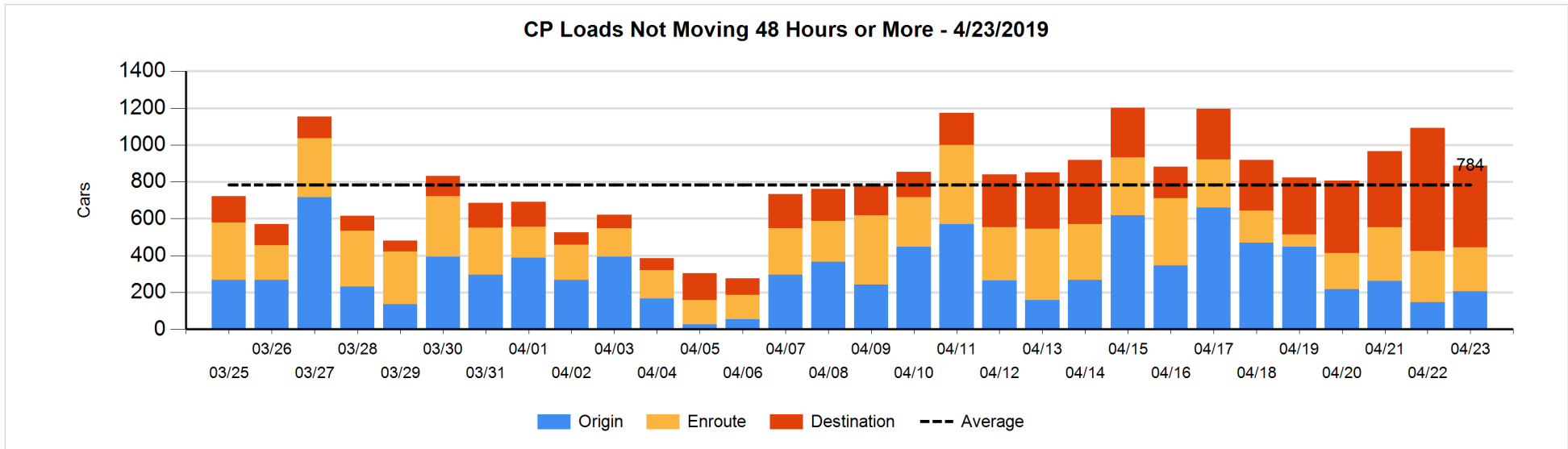
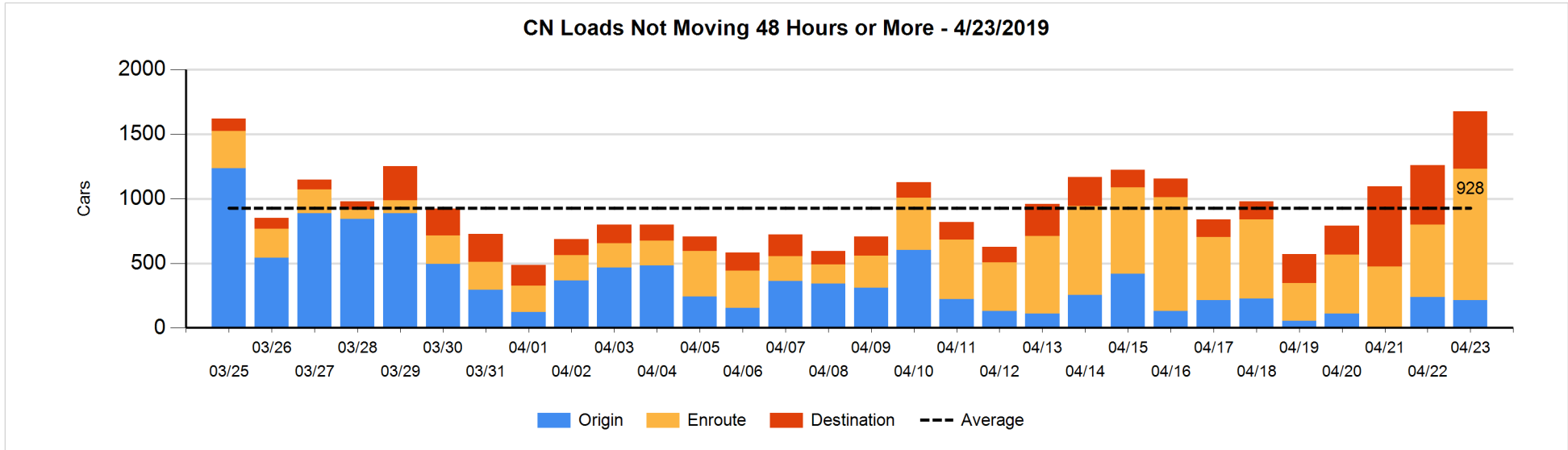


Loads Not Moving 48 Hours or More - 4/23/2019

	E Canada	Prince Rupert	Thunder Bay	USA/MEX	Vancouver	Total
CN						
Origin		1		1	210	212
Enroute	165	460	1	39	354	1019
Destination	85	106	108	23	124	446
	250	567	109	63	688	1677
CP						
Origin			1		205	206
Enroute	1		2	1	234	238
Destination	3		139	1	301	444
	4		142	2	740	888
US Rail / Short Line						
Origin						
Enroute				27		27
Destination				17	24	41
				44	24	68

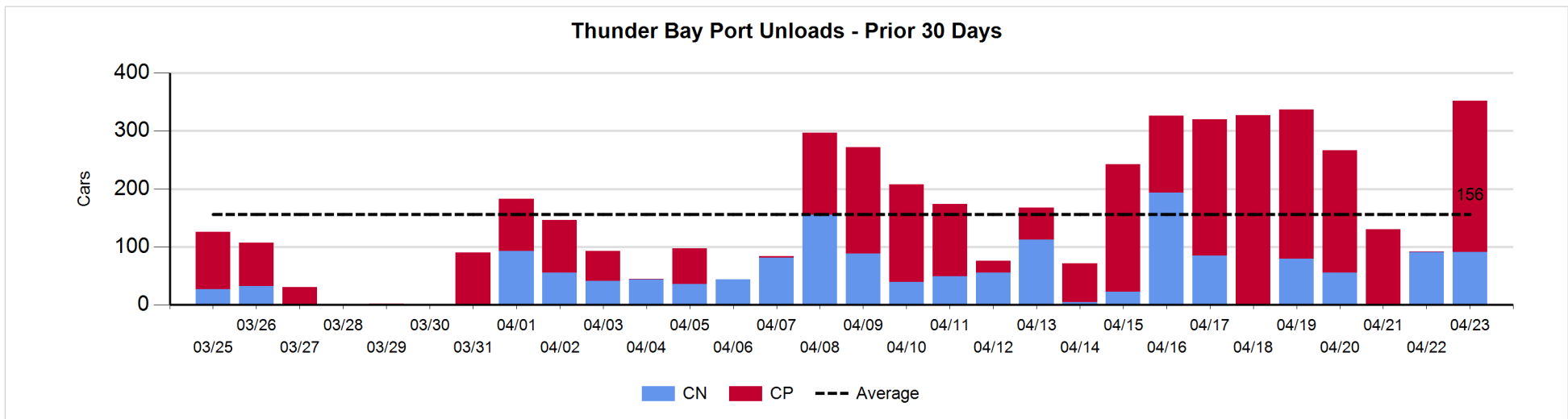
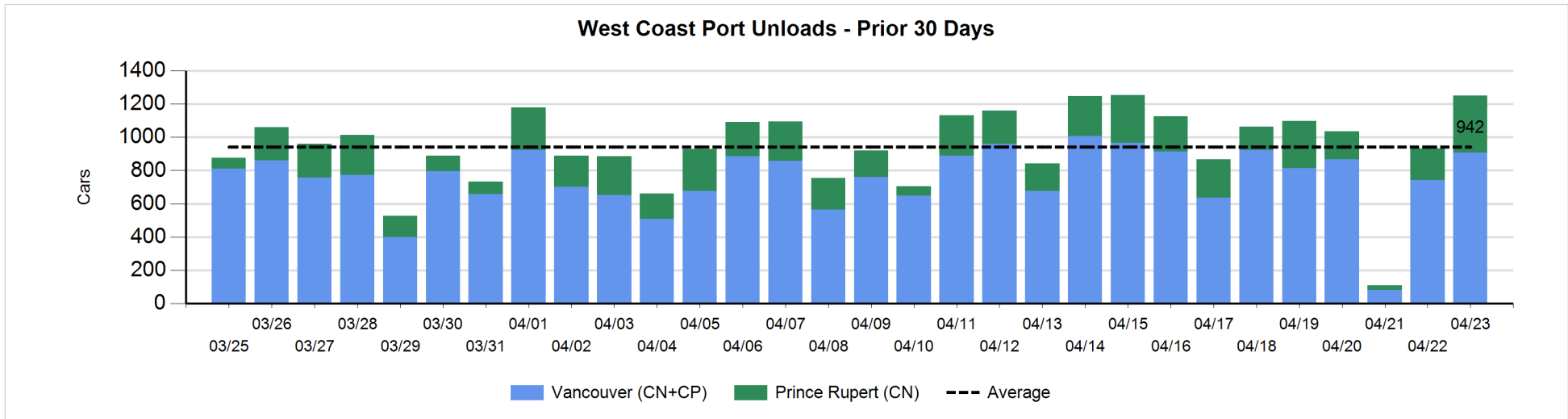
Change in Loads Not Moving 48 Hours or More - 4/23/2019

	E Canada	Prince Rupert	Thunder Bay	USA/MEX	Vancouver	Total
CN						
Origin		0		0	-26	-26
Enroute	-16	370	0	-2	108	460
Destination	-37	0	34	-5	-9	-17
	-53	370	34	-7	73	417
CP						
Origin			0		59	59
Enroute	0		0	-4	-37	-41
Destination	-3		-126	-4	-88	-221
	-3		-126	-8	-66	-203
US Rail / Short Line						
Origin						
Enroute				-3		-3
Destination				-1	3	2
				-4	3	-1



Port Unloads - 4/23/2019

	Prince Rupert	Vancouver	West Coast Total	Thunder Bay	Total
CN	345	293	638	91	729
CP		614	614	261	875
	345	907	1,252	352	1,604



Port Terminal Status

Vancouver

Daily Activity for 4/23/2019

	Cars Arrived	Cars Received in Interchange	Cars Delivered in Interchange	Cars Placed for Unloading	Loads on Wheels at Destination As of 4/23/2019
CN	243	112	7	360	525
CP	221	7	116	510	697
SRY		4		4	37

Port Unloads

	04/23	04/22	Week To Date	Last Week
CN	293	380	673	2,283
CP	614	362	976	2,920
SRY	4	2	6	27

Age Profile of Loaded Cars Waiting Placement for Unloading

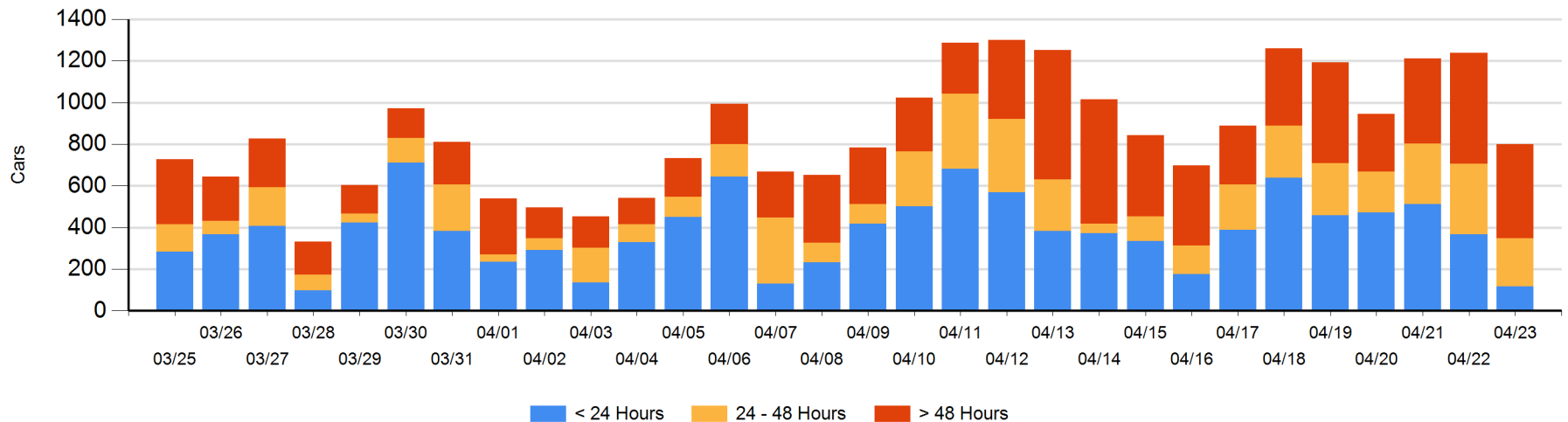
Today

	< 24 Hrs	24 - 48 Hrs	> 48-72 Hrs	> 72 Hrs	Total On Hand
CN	80	209	14	63	366
CP	37	22	185	191	435
SRY					0

Change in Last 24 Hours

	< 24 Hrs	24-48 Hrs	48 - 72 Hrs	> 72 Hrs
CN	-154	121	9	-107
CP	-95	-231	-24	43
SRY				

Loaded Cars on Hand Vancouver Waiting for Placement - Last 30 Days All Railways



Port Terminal Status

Prince Rupert

Daily Activity for 4/23/2019

	Cars Arrived	Cars Received in Interchange	Cars Delivered in Interchange	Cars Placed for Unloading	Loads on Wheels at Destination As of 4/23/2019
CN	100			215	180

Port Unloads

	04/23	04/22	Week To Date	Last Week
CN	345	189	534	1,348

Age Profile of Loaded Cars Waiting Placement for Unloading

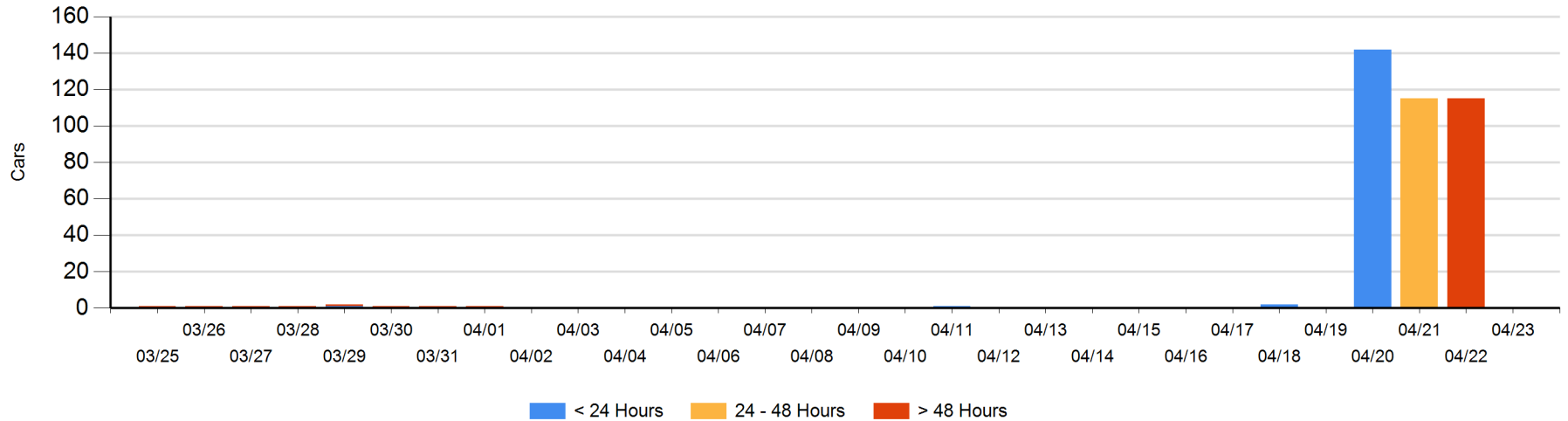
Today

	< 24 Hrs	24 - 48 Hrs	> 48-72 Hrs	> 72 Hrs	Total On Hand
CN					0

Change in Last 24 Hours

	< 24 Hrs	24-48 Hrs	48 - 72 Hrs	> 72 Hrs
CN			-115	

Loaded Cars on Hand Prince Rupert Waiting for Placement - Last 30 Days All Railways



Port Terminal Status

Thunder Bay

Daily Activity for 4/23/2019

	Cars Arrived	Cars Received in Interchange	Cars Delivered in Interchange	Cars Placed for Unloading	Loads on Wheels at Destination As of 4/23/2019
CN					245
CP	226			206	511

Port Unloads

	04/23	04/22	Week To Date	Last Week
CN	91	91	182	436
CP	261	1	262	1,512

Age Profile of Loaded Cars Waiting Placement for Unloading

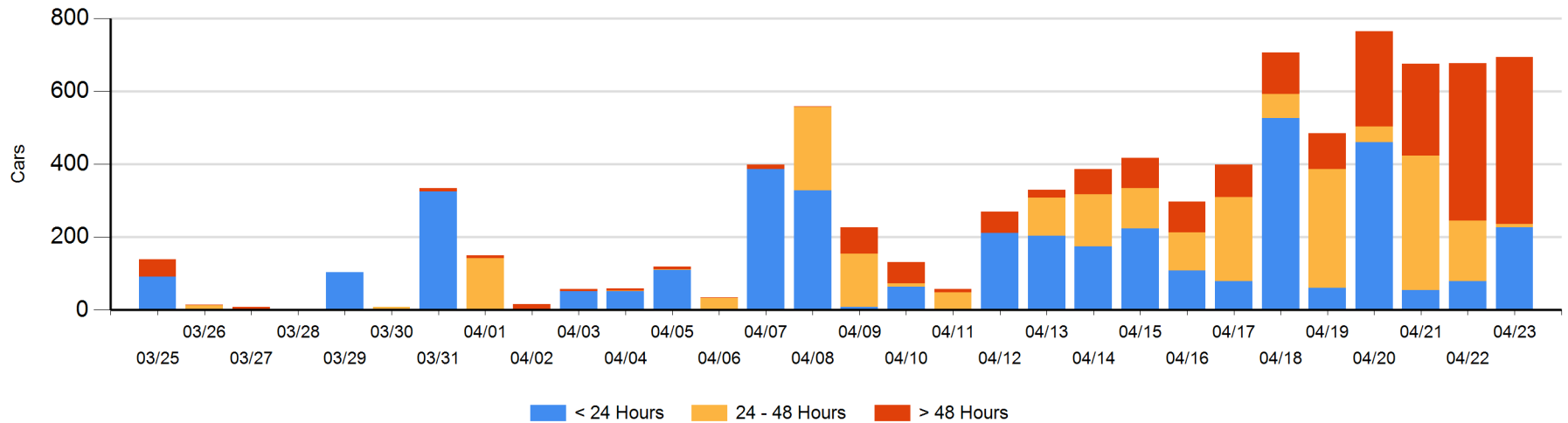
Today

	< 24 Hrs	24 - 48 Hrs	> 48-72 Hrs	> 72 Hrs	Total On Hand
CN		10	53	177	240
CP	226		113	115	454

Change in Last 24 Hours

	< 24 Hrs	24-48 Hrs	48 - 72 Hrs	> 72 Hrs
CN	-10	-43	-95	148
CP	157	-113	7	-34

Loaded Cars on Hand Thunder Bay Waiting for Placement - Last 30 Days All Railways



Measurement Definitions

Loads on Wheels	<p>Count of loaded rail cars including all rail cars that have been released loaded at origin and have not been reported by the railway as unloaded at destination.</p> <p>Counts include all rail cars (hopper cars and boxcars) moving within a pipeline.</p>
Loads Not Moving	<p>Loaded rail cars for which the railways have not reported a movement event for 48 hours or more whether the rail car is at origin, enroute or at destination.</p>
Port Unloads	<p>Count of rail cars reported by railways as unloaded at the western port destinations of Vancouver, Prince Rupert and Thunder Bay.</p> <p>Unload counts include all rail cars (hopper cars and boxcars) unloaded by all receivers including major port terminals, transloaders and other receivers.</p>
Cars Arrived	<p>Count of rail cars reported as arrived at the destination railway terminal.</p>
Cars Received in Interchange	<p>Count of rail cars received in interchange by each railway within a destination railway terminal. Interchange activity is tracked for the Vancouver and Thunder Bay pipelines as applicable.</p>
Cars Delivered in Interchange	<p>Count of rail cars delivered in interchange by each railway within a destination railway terminal. Interchange activity is tracked for the Vancouver and Thunder Bay pipelines as applicable.</p>
Cars Placed for Unloading	<p>Count of rail cars reported by the railways as placed loaded at the receiver's facility for unloading.</p>
Loads on Wheels at Destination	<p>Count of rail cars that remain under load within the destination railway terminal including rail cars that have been reported as placed for unloading but not yet reported as unloaded.</p>
Waiting Placement for Unloading	<p>Count of rail cars that have been reported as arrived at the destination railway terminal but not reported as placed for unloading by the railway.</p> <p>For the Ports of Vancouver, Prince Rupert and Thunder Bay the count of rail cars waiting placement for unloading is categorized by age – i.e. the elapsed time from arrival at destination to the current report date.</p>