

## SPEED READ

- Loads on wheels increased slightly overnight, reflecting a rise in both CN and CP volumes. On a net basis, volumes increased due to higher traffic in the Thunder Bay and Prince Rupert corridors offset by lower volumes in the E. Canada, Vancouver and USA/MEX corridors.
- Network fluidity improved overnight, led by a decline in idle car counts on CN by 20% (-330) offset by a rise in idle car counts on CP by 16% (+144). The total count of cars for 4+ days on both railways decreased slightly by 1% (-6) overnight - now at 916 cars.
- Three days in Week 39 unloads now behind prior week's performance by 200 unloads, marking reduced unloads at Thunder Bay and Vancouver offset by improved week over week performance at Prince Rupert.

---

## Loads on Wheels

- Loads on wheels increased for the fifth consecutive day, up (+32) overnight, due to higher volumes on both CN and CP - combined total at 12,130, the highest seen in the last 30 days, and 15% above the trailing 30-day average.
- On a net basis, the rise in loads on wheels indicates higher volumes in the Thunder Bay and Prince Rupert corridors offset by lower volumes in the E. Canada, Vancouver and USA/MEX corridors.
- CN volumes increased for the fifth consecutive day, up (+1) overnight, with higher volumes in the Prince Rupert, Thunder Bay and Vancouver corridors offset by reduced volumes in the E. Canada and USA/MEX corridors. System wide CN loads on wheels presently at 6,628, the highest seen in the last 30 days, and 15% above the trailing 30-day average.
- CP volumes increased marginally by 1% (+39) overnight, driven by a rise in volumes in the Thunder Bay and E. Canada corridors offset by a decline in volumes in the Vancouver and USA/MEX corridors. CP system wide loads on wheels currently at 5,385 and 18% above the trailing 30-day average.
- Vancouver currently at 6,984, decreased slightly by 1% (-77) overnight, now 11% above the trailing 30-day average.
- The Prince Rupert pipeline currently at 1,873, increased 3% (+55) overnight, and 23% above the trailing 30-day average.
- Thunder Bay volumes increased 9% (+148) overnight - currently at 1,722 and 62% above the trailing 30-day average, with 65% of traffic moving on CP.

## Hopper Car Rationing

- CN rationed 231 hopper cars in week 37.

## Loads Not Moving

- **The count of cars not moving for 48+ hours decreased 7% (-186) overnight, marking lower counts on CN offset by higher counts on CP. Idle car counts currently at 2,379 and 39% above the trailing 30-day average.**
- CN
  - **The count of idle cars for 48+ hours decreased 20% (-330) overnight - currently at 1,347 cars.**
  - The number of cars idle for 4+ days increased 19% (+92) overnight and have now increased for the fifth consecutive day - presently at 579 cars.
  - The count of cars not moving for 7+ days fell 4% (-7) overnight - currently at 156 cars.
  - Vancouver represents 46% of all idle cars.
  - In total 8% of all idle cars are dwelling at origin locations.
- CP
  - **CP idle car counts for 48+ hours increased 16% (+144) overnight - currently at 1,032 cars.**
  - The number of cars idle for 4+ days decreased 22% (-97) overnight - currently at 337 cars.

- The number of cars idle for 7+ days decreased for the fifth consecutive day, down 64% (-125) overnight - presently at 70 cars.
- Vancouver accounts for 81% of all idle cars.
- In total 36% of all idle cars are dwelling at origin locations.

### **Port Performance**

- CN and CP reported a total of 1,306 cars unloaded at the three major ports, now 18% above the trailing 30-day average. Three days in Week 39 unloads now behind last week's pace by 200 unloads, marking reduced unloads at Thunder Bay and Vancouver offset by higher unloads at Prince Rupert.
- Vancouver
  - 792 unloads reported by CN and CP at the Port of Vancouver; CN - 347 and CP - 445. Three days in Week 39 unloads are tracking behind last week's performance by more than 50 unloads.
  - There are more than 1,200 cars on site at Vancouver with more than 750 cars arriving at the port in the last 24 hours.
  - CN and CP have 1,750 cars in British Columbia en route to Vancouver, with more than 950 cars at Kamloops and west, and 58% of traffic moving on CP.
- Prince Rupert
  - Prince Rupert reported 207 unloads, now ahead of last week's unloads after three days by 14 unloads.
  - Loads on wheels now above 1,000 cars - currently at 1,873 cars.
  - There are fewer than 650 cars west of Jasper en route to Prince Rupert.
  - There are less than 400 cars on site at Prince Rupert with more than 400 cars arriving at the port in the last 24 hours.
- Thunder Bay
  - 307 unloads were reported at Thunder Bay yesterday. Three days in Week 39 unloads are tracking behind last week's pace by around 150 unloads.
  - There are around 900 cars on site at Thunder Bay with nearly 450 cars arriving at the port in the prior 24 hours.
  - There are 250 cars en route to Thunder Bay from Winnipeg and east.

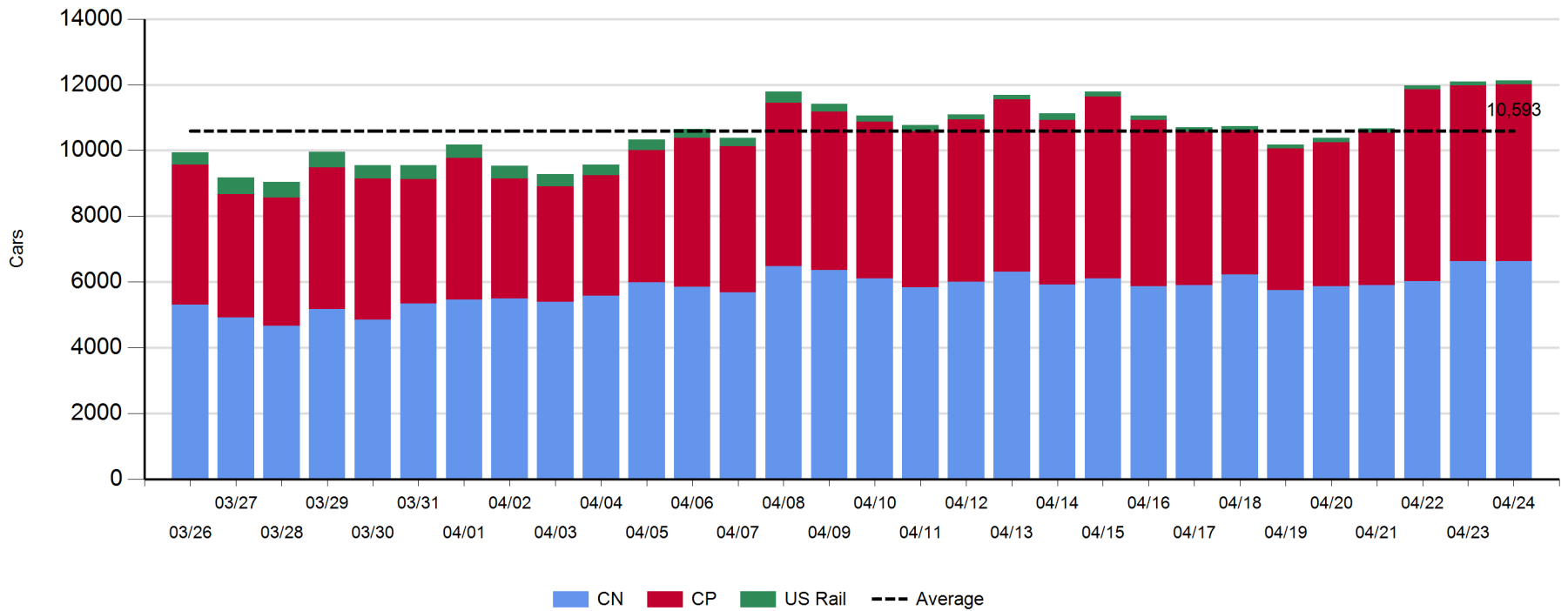
**Daily Loads on Wheels - 4/24/2019**

	E Canada	Prince Rupert	Thunder Bay	USA/MEX	Vancouver	Total
CN	520	1,873	600	315	3,320	6,628
CP	160		1,122	465	3,638	5,385
Short Line					26	26
US Rail				91		91
	680	1,873	1,722	871	6,984	12,130

**Change in Loads on Wheels - Prior 24 Hours**

	E Canada	Prince Rupert	Thunder Bay	USA/MEX	Vancouver	Total
CN	-99	55	49	-9	5	1
CP	14		99	-3	-71	39
Short Line					-11	-11
US Rail				3		3
	-85	55	148	-9	-77	32

**Loads on Wheels - Prior 30 Days**

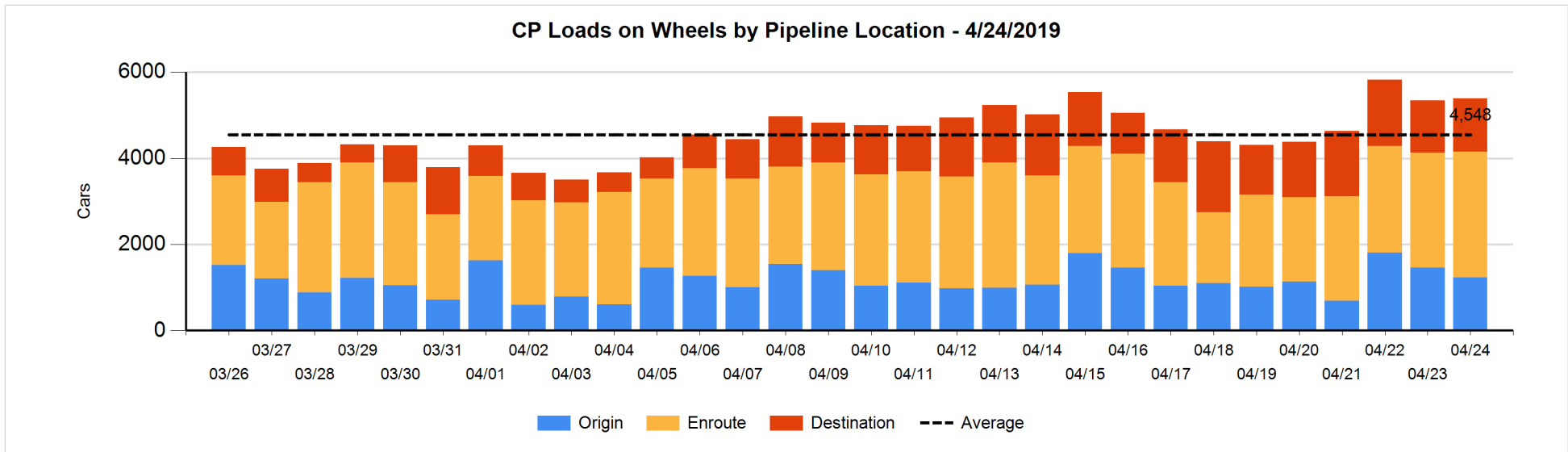
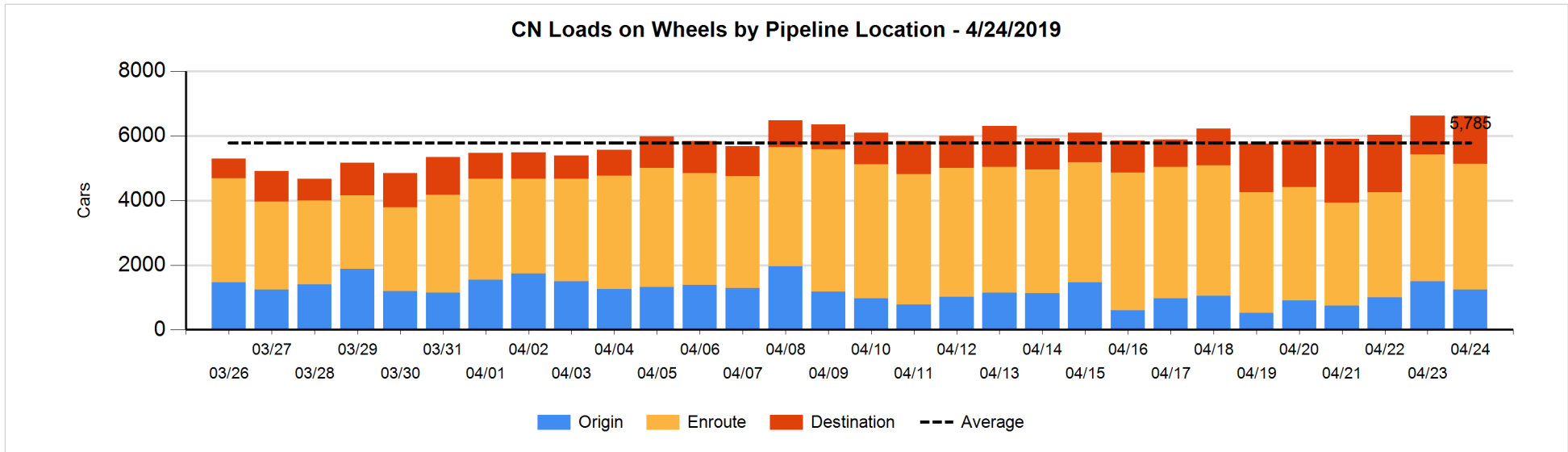


**Daily Loads on Wheels By Pipeline Location - 4/24/2019**

	E Canada	Prince Rupert	Thunder Bay	USA/MEX	Vancouver	Total
CN						
Origin	27	262	256	4	690	1,239
Enroute	351	1,226	110	226	1,979	3,892
Destination	142	385	234	85	651	1,497
	520	1,873	600	315	3,320	6,628
CP						
Origin	19		230		977	1,226
Enroute	138		240	438	2,116	2,932
Destination	3		652	27	545	1,227
	160		1,122	465	3,638	5,385
US Rail / Short Line						
Origin						
Enroute				47		47
Destination				44	26	70
				91	26	117

**Change in Daily Loads on Wheels By Pipeline Location - Prior 24 Hours**

	E Canada	Prince Rupert	Thunder Bay	USA/MEX	Vancouver	Total
CN						
Origin	-6	109	154	2	-519	-260
Enroute	-12	-259	-94	-69	398	-36
Destination	-81	205	-11	58	126	297
	-99	55	49	-9	5	1
CP						
Origin	18		31	-145	-133	-229
Enroute	-2		-73	118	214	257
Destination	-2		141	24	-152	11
	14		99	-3	-71	39
US Rail / Short Line						
Origin						
Enroute				-7		-7
Destination				10	-11	-1
				3	-11	-8

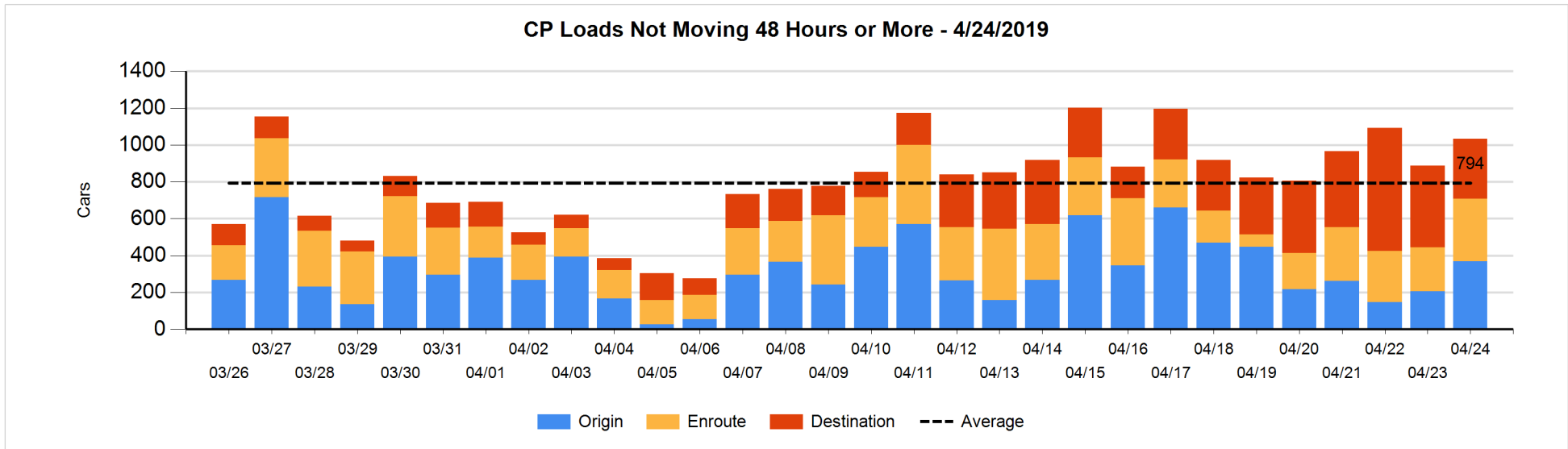
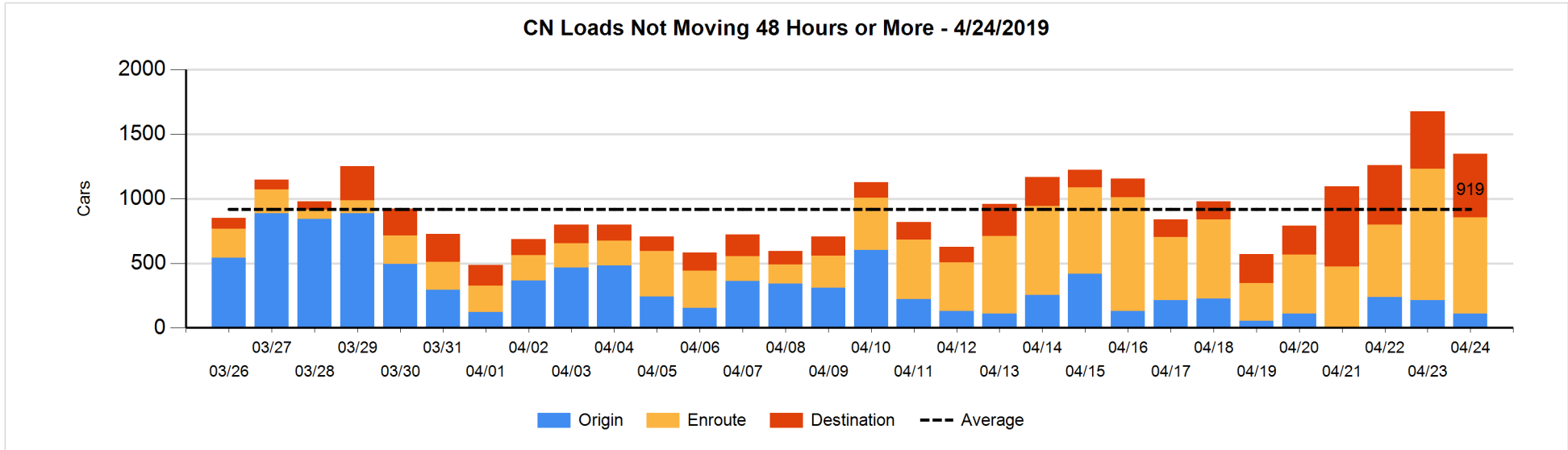


**Loads Not Moving 48 Hours or More - 4/24/2019**

	E Canada	Prince Rupert	Thunder Bay	USA/MEX	Vancouver	Total
<b>CN</b>						
Origin		1		1	108	110
Enroute	112	268	1	38	325	744
Destination	89	44	146	22	192	493
	201	313	147	61	625	1347
<b>CP</b>						
Origin			51		318	369
Enroute	2		1		335	338
Destination	2		143	1	179	325
	4		195	1	832	1032
<b>US Rail / Short Line</b>						
Origin						
Enroute				32		32
Destination				22	14	36
				54	14	68

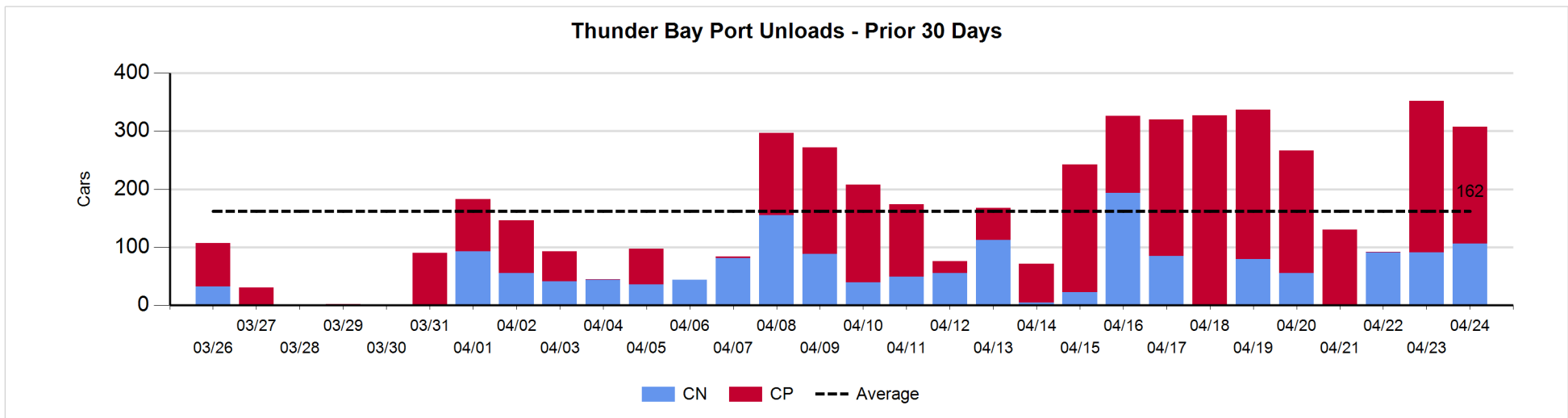
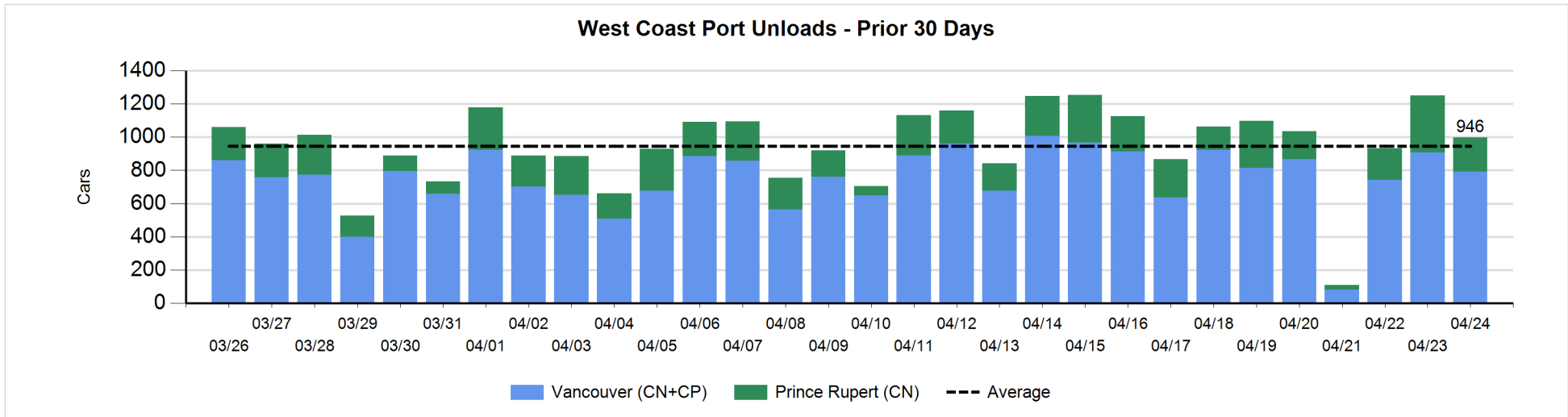
**Change in Loads Not Moving 48 Hours or More - 4/24/2019**

	E Canada	Prince Rupert	Thunder Bay	USA/MEX	Vancouver	Total
<b>CN</b>						
Origin		0		0	-102	-102
Enroute	-53	-192	0	-1	-29	-275
Destination	4	-62	38	-1	68	47
	-49	-254	38	-2	-63	-330
<b>CP</b>						
Origin			50		113	163
Enroute	1		-1	-1	101	100
Destination	-1		4	0	-122	-119
	0		53	-1	92	144
<b>US Rail / Short Line</b>						
Origin						
Enroute				5		5
Destination				5	-10	-5
				10	-10	0



**Port Unloads - 4/24/2019**

	Prince Rupert	Vancouver	West Coast Total	Thunder Bay	Total
CN	207	347	554	106	660
CP		445	445	201	646
	207	792	999	307	1,306





**Port Terminal Status**

**Vancouver**

Daily Activity for 4/24/2019

	Cars Arrived	Cars Received in Interchange	Cars Delivered in Interchange	Cars Placed for Unloading	Loads on Wheels at Destination As of 4/24/2019
CN	397	233	50	375	651
CP	372	47	233	295	545
SRY		3		13	26

**Port Unloads**

	04/24	04/23	Week To Date	Last Week
CN	347	293	1,020	2,283
CP	445	614	1,421	2,920
SRY	14	4	20	27

**Age Profile of Loaded Cars Waiting Placement for Unloading**

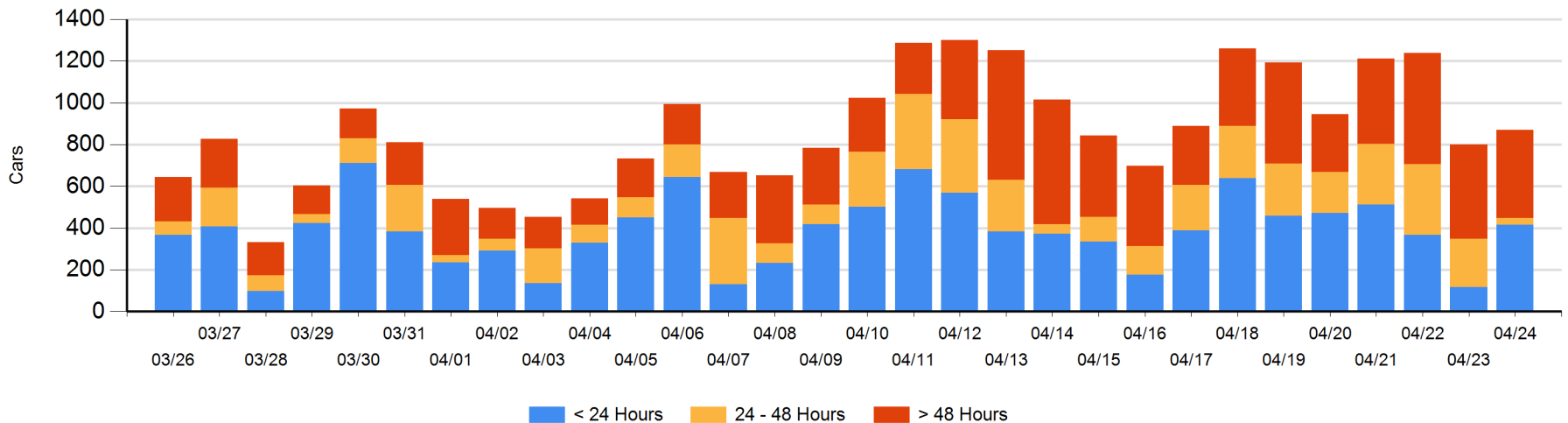
**Today**

	< 24 Hrs	24 - 48 Hrs	> 48-72 Hrs	> 72 Hrs	Total On Hand
CN	140	31	158	61	390
CP	275	3	22	180	480
SRY					0

**Change in Last 24 Hours**

	< 24 Hrs	24-48 Hrs	48 - 72 Hrs	> 72 Hrs
CN	60	-178	144	-2
CP	238	-19	-163	-11
SRY				

**Loaded Cars on Hand Vancouver Waiting for Placement - Last 30 Days All Railways**



**Port Terminal Status**

**Prince Rupert**

Daily Activity for 4/24/2019

	Cars Arrived	Cars Received in Interchange	Cars Delivered in Interchange	Cars Placed for Unloading	Loads on Wheels at Destination As of 4/24/2019
CN	412			411	385

**Port Unloads**

	04/24	04/23	Week To Date	Last Week
CN	207	345	741	1,348

**Age Profile of Loaded Cars Waiting Placement for Unloading**

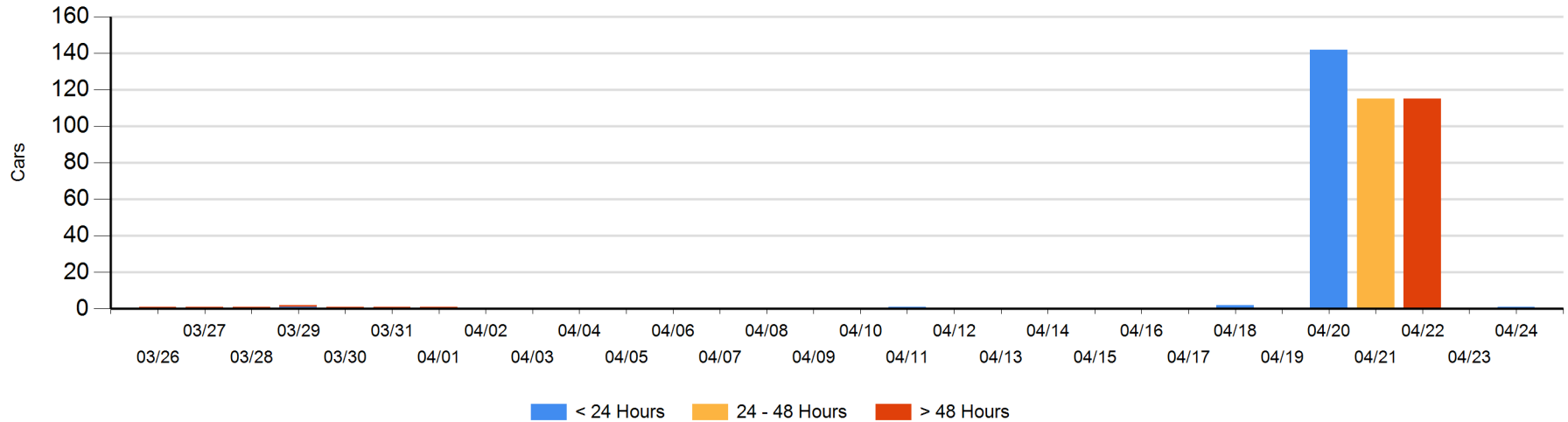
**Today**

	< 24 Hrs	24 - 48 Hrs	> 48-72 Hrs	> 72 Hrs	Total On Hand
CN	1				1

**Change in Last 24 Hours**

	< 24 Hrs	24-48 Hrs	48 - 72 Hrs	> 72 Hrs
CN	1			

Loaded Cars on Hand Prince Rupert Waiting for Placement - Last 30 Days All Railways



**Port Terminal Status**

**Thunder Bay**

Daily Activity for 4/24/2019

	Cars Arrived	Cars Received in Interchange	Cars Delivered in Interchange	Cars Placed for Unloading	Loads on Wheels at Destination As of 4/24/2019
CN	95			173	234
CP	342			174	652

**Port Unloads**

	04/24	04/23	Week To Date	Last Week
CN	106	91	288	436
CP	201	261	463	1,512

**Age Profile of Loaded Cars Waiting Placement for Unloading**

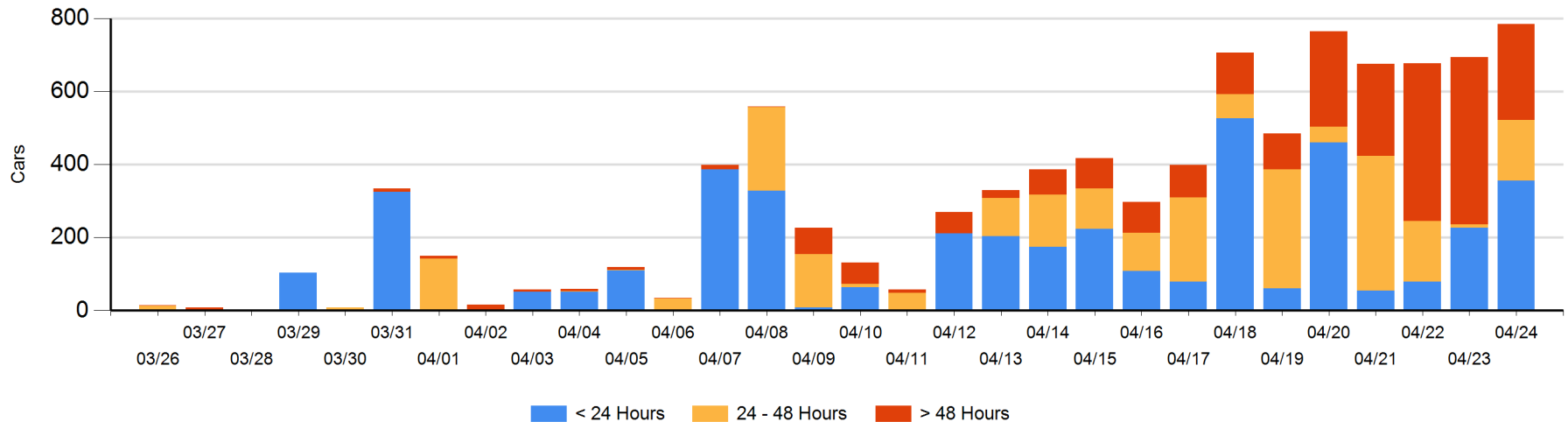
**Today**

	< 24 Hrs	24 - 48 Hrs	> 48-72 Hrs	> 72 Hrs	Total On Hand
CN	13		10	139	162
CP	342	167		113	622

**Change in Last 24 Hours**

	< 24 Hrs	24-48 Hrs	48 - 72 Hrs	> 72 Hrs
CN	13	-10	-43	-38
CP	116	167	-113	-2

**Loaded Cars on Hand Thunder Bay Waiting for Placement - Last 30 Days All Railways**



## Measurement Definitions

Loads on Wheels	<p>Count of loaded rail cars including all rail cars that have been released loaded at origin and have not been reported by the railway as unloaded at destination.</p> <p>Counts include all rail cars (hopper cars and boxcars) moving within a pipeline.</p>
Loads Not Moving	<p>Loaded rail cars for which the railways have not reported a movement event for 48 hours or more whether the rail car is at origin, enroute or at destination.</p>
Port Unloads	<p>Count of rail cars reported by railways as unloaded at the western port destinations of Vancouver, Prince Rupert and Thunder Bay.</p> <p>Unload counts include all rail cars (hopper cars and boxcars) unloaded by all receivers including major port terminals, transloaders and other receivers.</p>
Cars Arrived	<p>Count of rail cars reported as arrived at the destination railway terminal.</p>
Cars Received in Interchange	<p>Count of rail cars received in interchange by each railway within a destination railway terminal. Interchange activity is tracked for the Vancouver and Thunder Bay pipelines as applicable.</p>
Cars Delivered in Interchange	<p>Count of rail cars delivered in interchange by each railway within a destination railway terminal. Interchange activity is tracked for the Vancouver and Thunder Bay pipelines as applicable.</p>
Cars Placed for Unloading	<p>Count of rail cars reported by the railways as placed loaded at the receiver's facility for unloading.</p>
Loads on Wheels at Destination	<p>Count of rail cars that remain under load within the destination railway terminal including rail cars that have been reported as placed for unloading but not yet reported as unloaded.</p>
Waiting Placement for Unloading	<p>Count of rail cars that have been reported as arrived at the destination railway terminal but not reported as placed for unloading by the railway.</p> <p>For the Ports of Vancouver, Prince Rupert and Thunder Bay the count of rail cars waiting placement for unloading is categorized by age – i.e. the elapsed time from arrival at destination to the current report date.</p>