

SPEED READ

- Loads on wheels decreased slightly overnight, marking a decline in CN traffic offset by higher CP volumes. On a net basis, volumes decreased due to reduced traffic across all corridors other than Prince Rupert.
- Network fluidity improved overnight, led by a decline in idle car counts on both CN and CP by 16% (-146) and 29% (-261), respectively. The total count of cars for 4+ days on both railways decreased 2% (-14) overnight - now at 678 cars.
- One day in Week 40 unloads now ahead of prior week's performance by 650 unloads, reflecting improved week over week performance across all three major ports - Vancouver, Thunder Bay and Prince Rupert.

Loads on Wheels

- Loads on wheels decreased marginally by 1% (-74) overnight, due to reduced traffic on CN offset by higher volumes on CP - combined total at 12,055 and 10% above the trailing 30-day average.
- On a net basis, the decline in loads on wheels indicates reduced volumes across all corridors other than Prince Rupert.
- CN volumes decreased 6% (-405) overnight, with reduced volumes across all corridors other than Prince Rupert. System wide CN loads on wheels currently at 6,325 and 5% above the trailing 30-day average.
- CP volumes rose 6% (+303) overnight, driven by an increase in traffic across all corridors other than USA/MEX. CP system wide loads on wheels now at 5,442 and 15% above the trailing 30-day average.
- Vancouver now at 7,438, decreased slightly by 1% (-40) overnight, now 12% above the trailing 30-day average.
- The Prince Rupert pipeline currently at 1,613, increased 5% (+82) overnight, and 4% above the trailing 30-day average.
- Thunder Bay volumes decreased slightly by 1% (-14) overnight - presently at 1,742 and 43% above the trailing 30-day average, with 74% of traffic moving on CP.

Hopper Car Rationing

- CN rationed 100 hopper cars in week 38.

Loads Not Moving

- **The count of cars not moving for 48+ hours decreased 22% (-407) overnight, reflecting lower counts on both CN and CP. Idle car counts now at 1,425 and 16% below the trailing 30-day average.**
- CN
 - **The count of idle cars for 48+ hours decreased 16% (-146) overnight - presently at 781 cars.**
 - The number of cars idle for 4+ days decreased 14% (-69) overnight - now at 423 cars.
 - The count of cars not moving for 7+ days decreased 13% (-31) overnight - now at 199 cars.
 - Vancouver represents 41% of all idle cars.
 - In total 14% of all idle cars are dwelling at origin locations.
- CP
 - **CP idle car counts for 48+ hours decreased 29% (-261) overnight - currently at 644 cars.**
 - The number of cars idle for 4+ days rose 28% (+55) overnight - presently at 255 cars.
 - The number of cars idle for 7+ days increased significantly by 104% (+57) overnight - presently at 112 cars.

- Vancouver accounts for 64% of all idle cars.
- In total 16% of all idle cars are dwelling at origin locations.

Port Performance

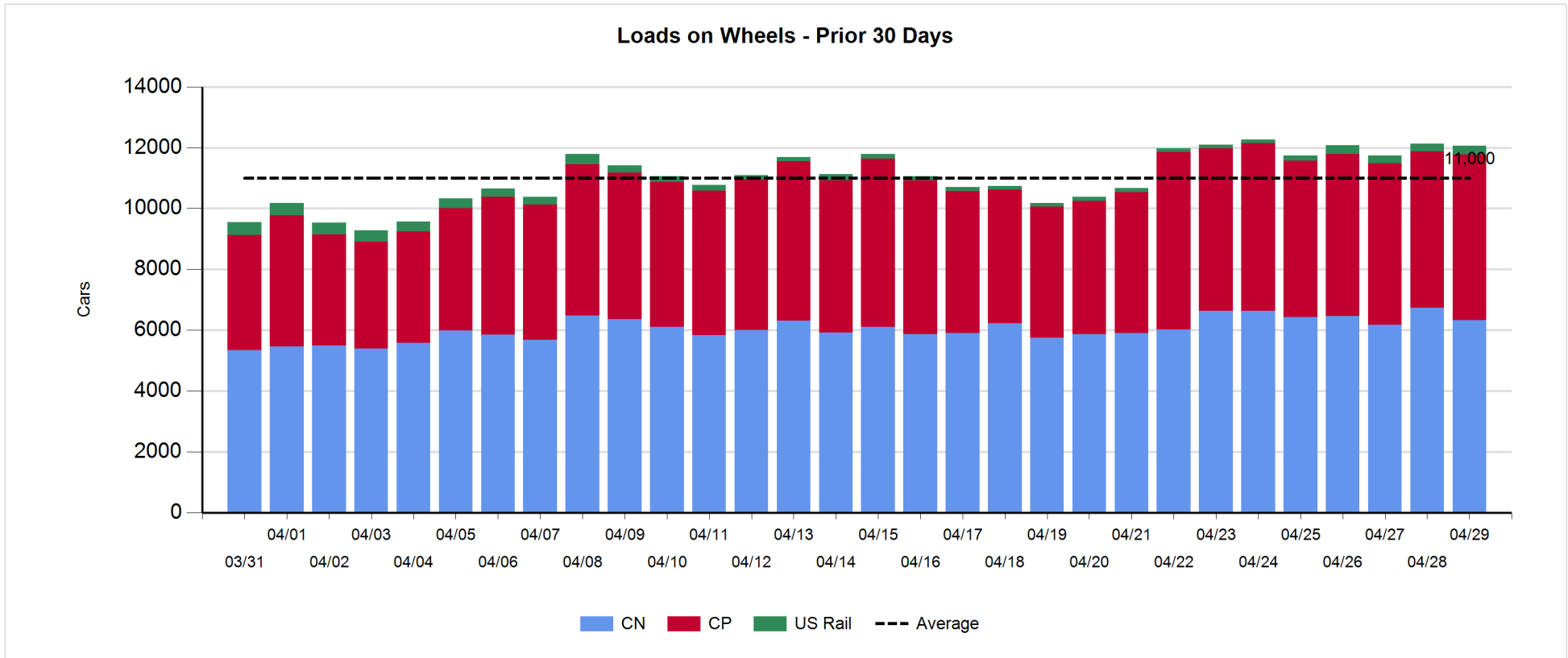
- CN and CP reported a total of 1,672 cars unloaded at the three major ports, the highest seen in the last 30 days, now 42% above the trailing 30-day average. One day in Week 40 unloads now ahead of last week's pace by 650 unloads, reflecting higher unloads across all three major ports - Vancouver, Thunder Bay and Prince Rupert.
- Vancouver
 - 1,112 unloads, the highest seen in the last 30 days, was reported by CN and CP at the Port of Vancouver; CN - 601 and CP - 511. One day in Week 40 unloads are tracking ahead of last week's performance by about 400 unloads.
 - There are more than 1,500 cars on site at Vancouver with more than 800 cars arriving at the port in the last 24 hours.
 - CN and CP have nearly 2,500 cars in British Columbia en route to Vancouver, with around 1,550 cars at Kamloops and west, and 50% of traffic moving on CN.
- Prince Rupert
 - Prince Rupert reported 229 unloads, now ahead of last week's unloads after one day by 50 unloads.
 - Loads on wheels now above 1,000 cars - presently at 1,613 cars.
 - There are around 400 cars west of Jasper en route to Prince Rupert.
 - There are 350 cars on site at Prince Rupert with 200 cars arriving at the port in the last 24 hours.
- Thunder Bay
 - 331 unloads were reported at Thunder Bay yesterday. One day in Week 40 unloads are tracking ahead of last week's pace by fewer than 250 unloads.
 - There are more than 650 cars on site at Thunder Bay with more than 200 cars arriving at the port in the prior 24 hours.
 - There are 150 cars en route to Thunder Bay from Winnipeg and east.

Daily Loads on Wheels - 4/29/2019

	E Canada	Prince Rupert	Thunder Bay	USA/MEX	Vancouver	Total
CN	545	1,613	454	216	3,497	6,325
CP	92		1,288	172	3,890	5,442
Short Line	34				51	85
US Rail				203		203
	671	1,613	1,742	591	7,438	12,055

Change in Loads on Wheels - Prior 24 Hours

	E Canada	Prince Rupert	Thunder Bay	USA/MEX	Vancouver	Total
CN	-93	82	-128	-38	-228	-405
CP	28		114	-39	200	303
Short Line	33				-12	21
US Rail				7		7
	-32	82	-14	-70	-40	-74

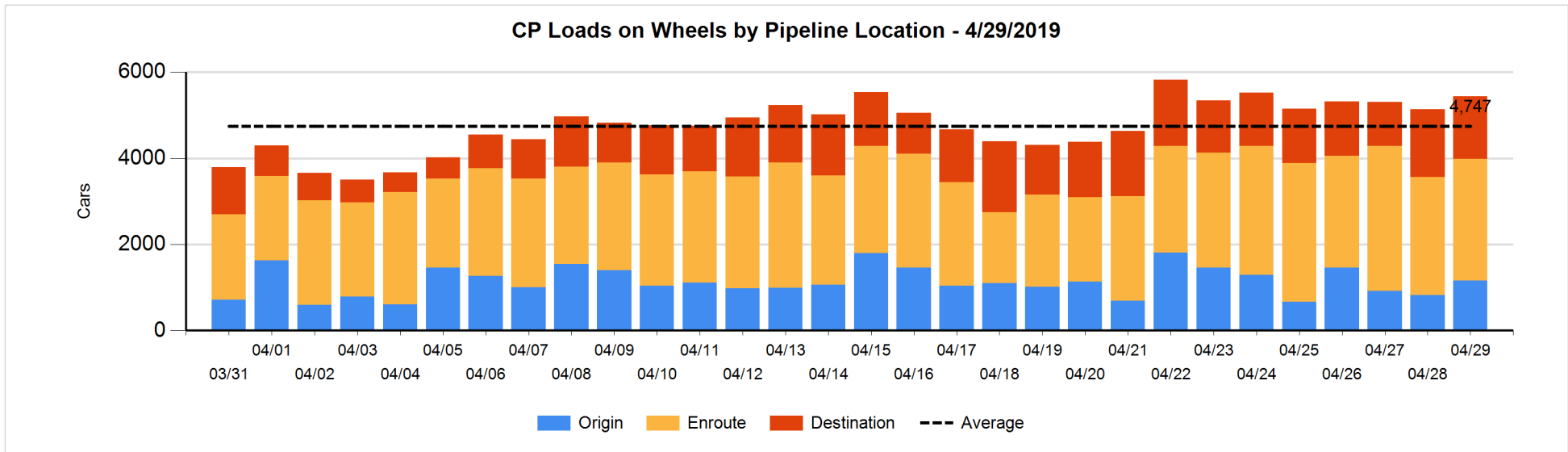
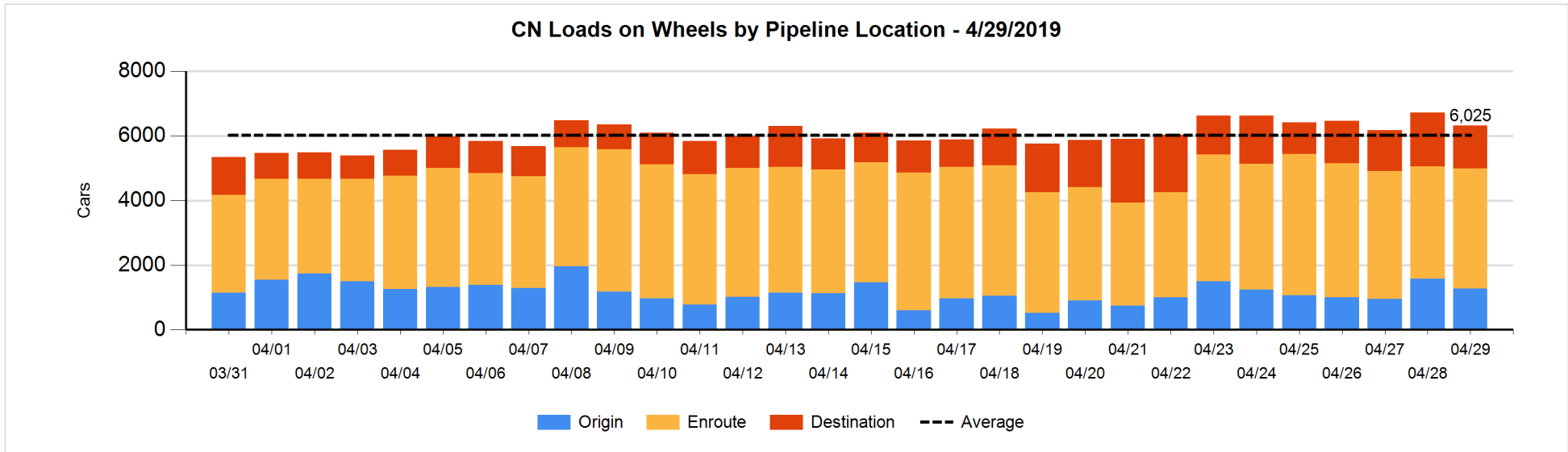


Daily Loads on Wheels By Pipeline Location - 4/29/2019

	E Canada	Prince Rupert	Thunder Bay	USA/MEX	Vancouver	Total
CN						
Origin	7	522	150	9	592	1,280
Enroute	369	751	107	149	2,333	3,709
Destination	169	340	197	58	572	1,336
	545	1,613	454	216	3,497	6,325
CP						
Origin	36		317	1	809	1,163
Enroute	43		500	98	2,176	2,817
Destination	13		471	73	905	1,462
	92		1,288	172	3,890	5,442
US Rail / Short Line						
Origin						
Enroute				142		142
Destination	34			61	51	146
	34			203	51	288

Change in Daily Loads on Wheels By Pipeline Location - Prior 24 Hours

	E Canada	Prince Rupert	Thunder Bay	USA/MEX	Vancouver	Total
CN						
Origin	-130	18	0	0	-187	-299
Enroute	-16	86	0	-57	225	238
Destination	53	-22	-128	19	-266	-344
	-93	82	-128	-38	-228	-405
CP						
Origin	36		143	1	161	341
Enroute	-7		-46	-57	188	78
Destination	-1		17	17	-149	-116
	28		114	-39	200	303
US Rail / Short Line						
Origin						
Enroute				-1		-1
Destination	33			8	-12	29
	33			7	-12	28

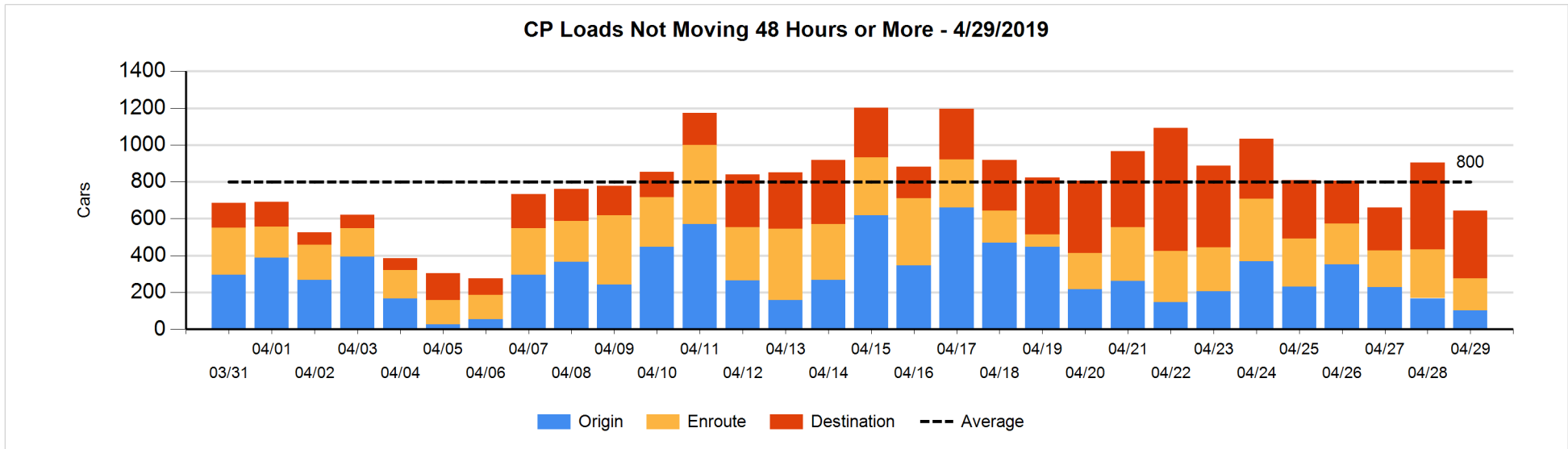
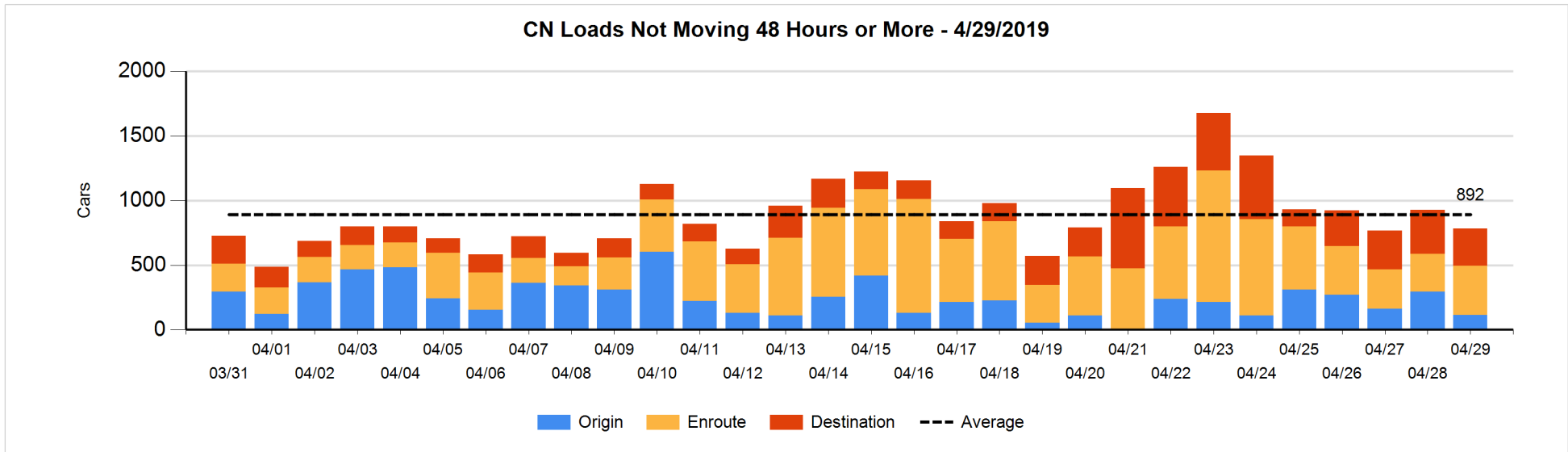


Loads Not Moving 48 Hours or More - 4/29/2019

	E Canada	Prince Rupert	Thunder Bay	USA/MEX	Vancouver	Total
CN						
Origin				1	112	113
Enroute	107	112	2	22	138	381
Destination	38	104	69	3	73	287
	145	216	71	26	323	781
CP						
Origin					101	101
Enroute	2		70	64	39	175
Destination	13		72	11	272	368
	15		142	75	412	644
US Rail / Short Line						
Origin						
Enroute				24		24
Destination				37	32	69
				61	32	93

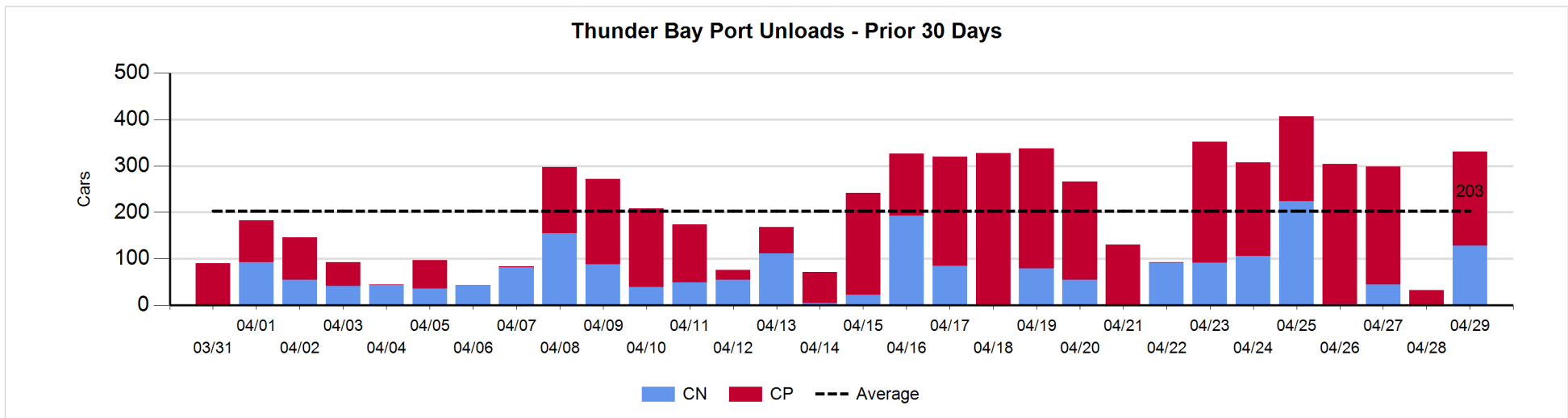
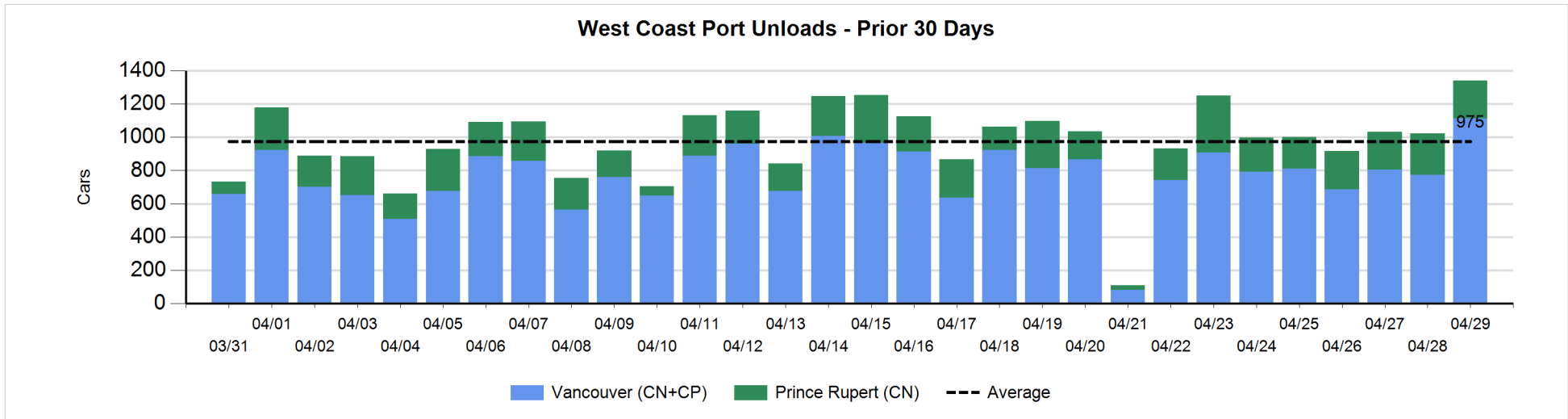
Change in Loads Not Moving 48 Hours or More - 4/29/2019

	E Canada	Prince Rupert	Thunder Bay	USA/MEX	Vancouver	Total
CN						
Origin	-3	-96		0	-83	-182
Enroute	-18	105	0	-2	6	91
Destination	-19	0	5	-11	-30	-55
	-40	9	5	-13	-107	-146
CP						
Origin			-63		-4	-67
Enroute	0		70	-47	-113	-90
Destination	-1		-10	0	-93	-104
	-1		-3	-47	-210	-261
US Rail / Short Line						
Origin						
Enroute				0		0
Destination	-1			-7	-11	-19
	-1			-7	-11	-19



Port Unloads - 4/29/2019

	Prince Rupert	Vancouver	West Coast Total	Thunder Bay	Total
CN	229	601	830	128	958
CP		511	511	203	714
	229	1,112	1,341	331	1,672



Port Terminal Status

Vancouver

Daily Activity for 4/29/2019

	Cars Arrived	Cars Received in Interchange	Cars Delivered in Interchange	Cars Placed for Unloading	Loads on Wheels at Destination As of 4/29/2019
CN	467	215	224	553	572
CP	348	224	219	399	905
SRY	1	4		22	51

Port Unloads

	04/29	04/28	Week To Date	Last Week
CN	601	287	601	2,384
CP	511	487	511	3,132
SRY	13	3	13	42

Age Profile of Loaded Cars Waiting Placement for Unloading

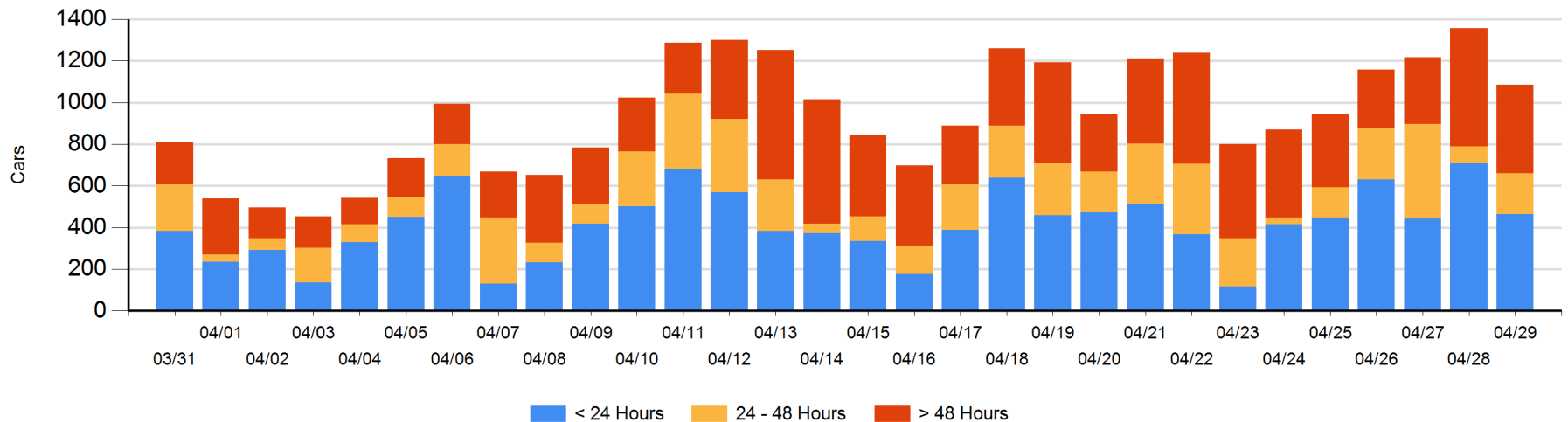
Today

	< 24 Hrs	24 - 48 Hrs	> 48-72 Hrs	> 72 Hrs	Total On Hand
CN	234	20	1	110	365
CP	230	175	49	267	721
SRY					0

Change in Last 24 Hours

	< 24 Hrs	24-48 Hrs	48 - 72 Hrs	> 72 Hrs
CN	-62	19	-121	-43
CP	-184	96	-125	150
SRY				

Loaded Cars on Hand Vancouver Waiting for Placement - Last 30 Days All Railways



Port Terminal Status

Prince Rupert

Daily Activity for 4/29/2019

	Cars Arrived	Cars Received in Interchange	Cars Delivered in Interchange	Cars Placed for Unloading	Loads on Wheels at Destination As of 4/29/2019
CN	207			206	340

Port Unloads

	04/29	04/28	Week To Date	Last Week
CN	229	248	229	1,640

Age Profile of Loaded Cars Waiting Placement for Unloading

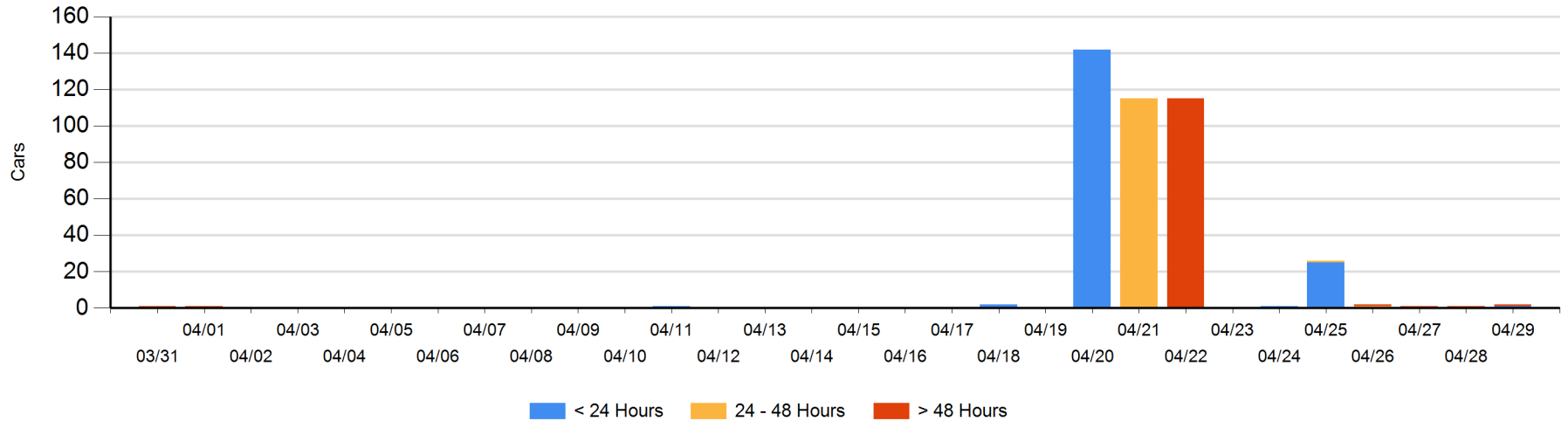
Today

	< 24 Hrs	24 - 48 Hrs	> 48-72 Hrs	> 72 Hrs	Total On Hand
CN	1			1	2

Change in Last 24 Hours

	< 24 Hrs	24-48 Hrs	48 - 72 Hrs	> 72 Hrs
CN	1			0

Loaded Cars on Hand Prince Rupert Waiting for Placement - Last 30 Days All Railways



Port Terminal Status

Thunder Bay

Daily Activity for 4/29/2019

	Cars Arrived	Cars Received in Interchange	Cars Delivered in Interchange	Cars Placed for Unloading	Loads on Wheels at Destination As of 4/29/2019
CN					197
CP	219			89	471

Port Unloads

	04/29	04/28	Week To Date	Last Week
CN	128		128	559
CP	203	32	203	1,233

Age Profile of Loaded Cars Waiting Placement for Unloading

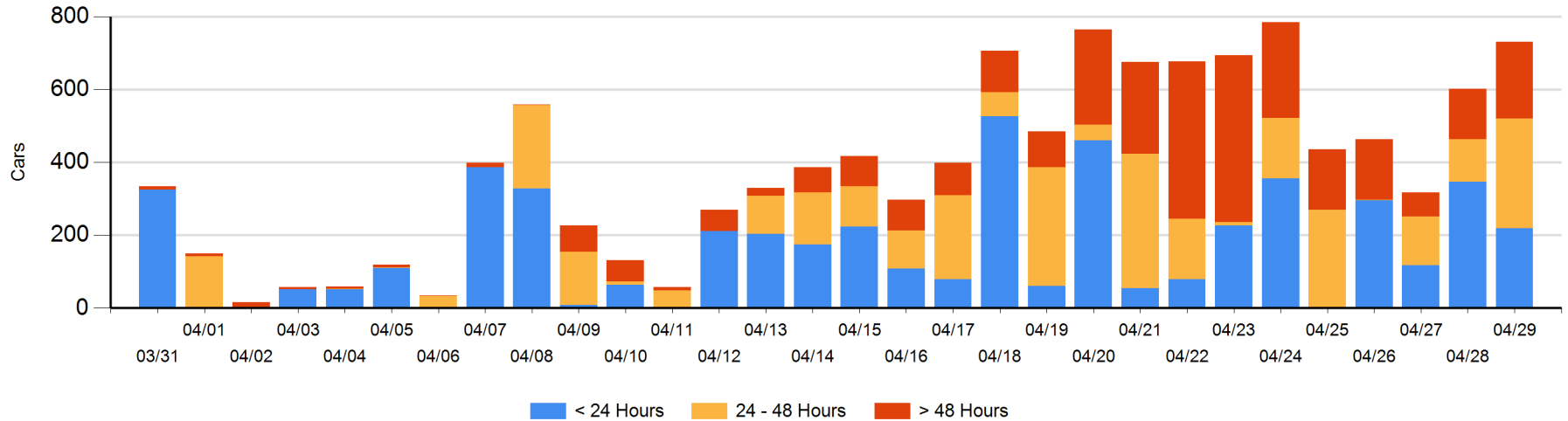
Today

	< 24 Hrs	24 - 48 Hrs	> 48-72 Hrs	> 72 Hrs	Total On Hand
CN		128	5	58	191
CP	219	173	112	36	540

Change in Last 24 Hours

	< 24 Hrs	24-48 Hrs	48 - 72 Hrs	> 72 Hrs
CN	-128	123	-51	56
CP	1	60	66	3

Loaded Cars on Hand Thunder Bay Waiting for Placement - Last 30 Days All Railways



Measurement Definitions

Loads on Wheels	<p>Count of loaded rail cars including all rail cars that have been released loaded at origin and have not been reported by the railway as unloaded at destination.</p> <p>Counts include all rail cars (hopper cars and boxcars) moving within a pipeline.</p>
Loads Not Moving	<p>Loaded rail cars for which the railways have not reported a movement event for 48 hours or more whether the rail car is at origin, enroute or at destination.</p>
Port Unloads	<p>Count of rail cars reported by railways as unloaded at the western port destinations of Vancouver, Prince Rupert and Thunder Bay.</p> <p>Unload counts include all rail cars (hopper cars and boxcars) unloaded by all receivers including major port terminals, transloaders and other receivers.</p>
Cars Arrived	<p>Count of rail cars reported as arrived at the destination railway terminal.</p>
Cars Received in Interchange	<p>Count of rail cars received in interchange by each railway within a destination railway terminal. Interchange activity is tracked for the Vancouver and Thunder Bay pipelines as applicable.</p>
Cars Delivered in Interchange	<p>Count of rail cars delivered in interchange by each railway within a destination railway terminal. Interchange activity is tracked for the Vancouver and Thunder Bay pipelines as applicable.</p>
Cars Placed for Unloading	<p>Count of rail cars reported by the railways as placed loaded at the receiver's facility for unloading.</p>
Loads on Wheels at Destination	<p>Count of rail cars that remain under load within the destination railway terminal including rail cars that have been reported as placed for unloading but not yet reported as unloaded.</p>
Waiting Placement for Unloading	<p>Count of rail cars that have been reported as arrived at the destination railway terminal but not reported as placed for unloading by the railway.</p> <p>For the Ports of Vancouver, Prince Rupert and Thunder Bay the count of rail cars waiting placement for unloading is categorized by age – i.e. the elapsed time from arrival at destination to the current report date.</p>