

SPEED READ

- Loads on wheels decreased overnight, reflecting a decline in CN traffic offset by higher CP volumes. On a net basis, volumes fell due to lower traffic across all corridors other than Thunder Bay.
- Network fluidity deteriorated overnight, led by an increase in idle car counts on both CN and CP by 34% (+267) and 14% (+93), respectively. The total count of cars for 4+ days on both railways increased 9% (+63) overnight - currently at 754 cars.
- Two days in Week 40 unloads now ahead of prior week's performance by more than 600 unloads, marking improved week over week performance at Vancouver and Thunder Bay offset by lower unloads at Prince Rupert.

Loads on Wheels

- Loads on wheels decreased 5% (-553) overnight, due to reduced traffic on CN offset by higher volumes on CP - combined total at 11,516 and 4% above the trailing 30-day average.
- On a net basis, the decline in loads on wheels reflects reduced traffic across all corridors other than Thunder Bay.
- CN volumes fell 7% (-470) overnight, with reduced traffic across all corridors other than Thunder Bay. System wide CN loads on wheels currently at 5,847 and 3% below the trailing 30-day average.
- CP volumes increased marginally by 1% (+66) overnight, driven by a rise in volumes in the Thunder Bay and E. Canada corridors offset by a decline in traffic in the Vancouver and USA/MEX corridors. CP system wide loads on wheels currently at 5,523 and 15% above the trailing 30-day average.
- Vancouver currently at 7,023, declined 6% (-428) overnight, now 4% above the trailing 30-day average.
- The Prince Rupert pipeline now at 1,538, fell 5% (-75) overnight, and 1% below the trailing 30-day average.
- Thunder Bay volumes increased 8% (+145) overnight - now at 1,888, the highest seen in the last 30 days, and 51% above the trailing 30-day average, with 76% of traffic moving on CP.

Hopper Car Rationing

- CN rationed 100 hopper cars in week 38.

Loads Not Moving

- **The count of cars not moving for 48+ hours increased 25% (+360) overnight, reflecting higher counts on both CN and CP. Idle car counts presently at 1,791 and 5% above the trailing 30-day average.**
- CN
 - **The count of idle cars for 48+ hours rose 34% (+267) overnight - presently at 1,041 cars.**
 - The number of cars idle for 4+ days increased 3% (+12) overnight - currently at 435 cars.
 - The count of cars not moving for 7+ days fell 2% (-3) overnight - now at 196 cars.
 - Vancouver represents 33% of all idle cars.
 - In total 31% of all idle cars are dwelling at origin locations.
- CP
 - **CP idle car counts for 48+ hours increased 14% (+93) overnight - currently at 750 cars.**
 - The number of cars idle for 4+ days rose 19% (+51) overnight - currently at 319 cars.
 - The number of cars idle for 7+ days declined significantly by 50% (-56) overnight - now at 56 cars.

- Vancouver accounts for 63% of all idle cars.
- In total 0% of all idle cars are dwelling at origin locations.

Port Performance

- CN and CP reported a total of 1,548 cars unloaded at the three major ports, now 29% above the trailing 30-day average. Two days in Week 40 unloads now ahead of last week's pace by more than 600 unloads, marking higher unloads at Vancouver and Thunder Bay offset by lower unloads at Prince Rupert.
- Vancouver
 - 1,003 unloads reported by CN and CP at the Port of Vancouver; CN - 484 and CP - 519. Two days in Week 40 unloads are tracking ahead of last week's performance by 500 unloads.
 - There are around 1,650 cars on site at Vancouver with 1,150 cars arriving at the port in the last 24 hours.
 - CN and CP have more than 2,400 cars in British Columbia en route to Vancouver, with 1,150 cars at Kamloops and west, and 63% of traffic moving on CP.
- Prince Rupert
 - Prince Rupert reported 234 unloads, now behind last week's unloads after two days by more than 50 unloads.
 - Loads on wheels now above 1,000 cars - now at 1,538 cars.
 - There are more than 350 cars west of Jasper en route to Prince Rupert.
 - There are more than 200 cars on site at Prince Rupert with more than 100 cars arriving at the port in the last 24 hours.
- Thunder Bay
 - 311 unloads were reported at Thunder Bay yesterday. Two days in Week 40 unloads are tracking ahead of last week's pace by 200 unloads.
 - There are more than 500 cars on site at Thunder Bay with 150 cars arriving at the port in the prior 24 hours.
 - There are more than 550 cars en route to Thunder Bay from Winnipeg and east.

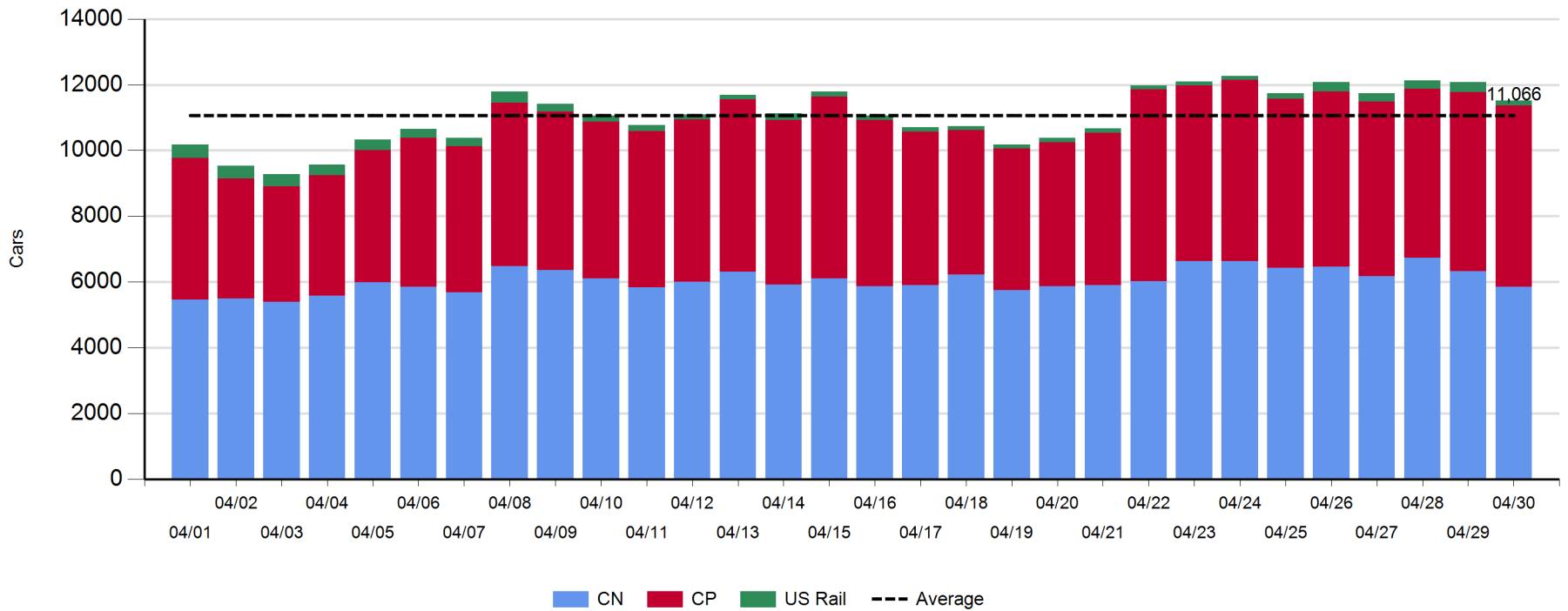
Daily Loads on Wheels - 4/30/2019

	E Canada	Prince Rupert	Thunder Bay	USA/MEX	Vancouver	Total
CN	514	1,538	461	190	3,144	5,847
CP	123		1,427	123	3,850	5,523
Short Line	12				29	41
US Rail				105		105
	649	1,538	1,888	418	7,023	11,516

Change in Loads on Wheels - Prior 24 Hours

	E Canada	Prince Rupert	Thunder Bay	USA/MEX	Vancouver	Total
CN	-31	-75	7	-19	-352	-470
CP	31		138	-49	-54	66
Short Line	-22				-22	-44
US Rail				-105		-105
	-22	-75	145	-173	-428	-553

Loads on Wheels - Prior 30 Days

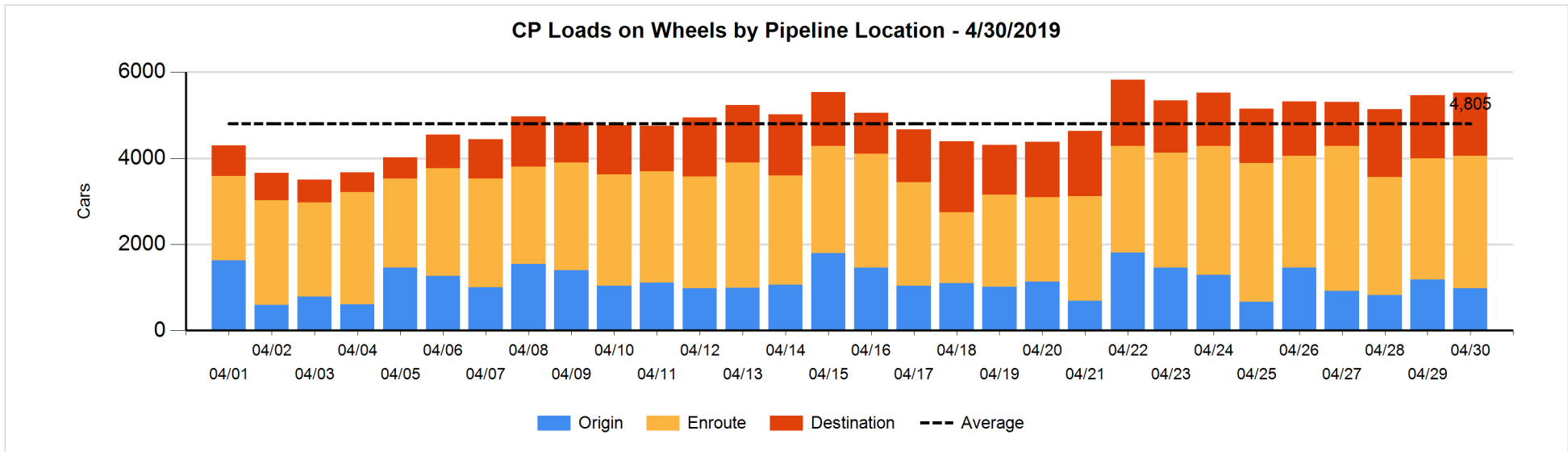
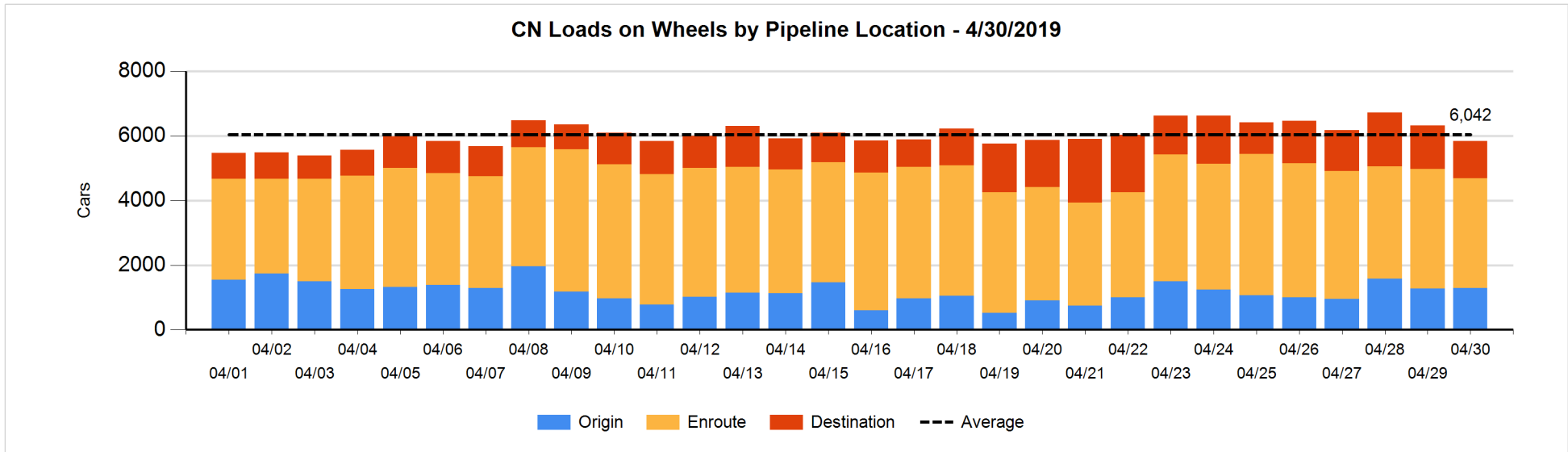


Daily Loads on Wheels By Pipeline Location - 4/30/2019

	E Canada	Prince Rupert	Thunder Bay	USA/MEX	Vancouver	Total
CN						
Origin	8	680	104	8	488	1,288
Enroute	347	634	257	128	2,034	3,400
Destination	159	224	100	54	622	1,159
	514	1,538	461	190	3,144	5,847
CP						
Origin	45		210	1	725	981
Enroute	76		805	61	2,137	3,079
Destination	2		412	61	988	1,463
	123		1,427	123	3,850	5,523
US Rail / Short Line						
Origin						
Enroute				43		43
Destination	12			62	29	103
	12			105	29	146

Change in Daily Loads on Wheels By Pipeline Location - Prior 24 Hours

	E Canada	Prince Rupert	Thunder Bay	USA/MEX	Vancouver	Total
CN						
Origin	1	158	-46	-1	-104	8
Enroute	-22	-117	150	-14	-299	-302
Destination	-10	-116	-97	-4	51	-176
	-31	-75	7	-19	-352	-470
CP						
Origin	9		-108	0	-97	-196
Enroute	33		305	-37	-39	262
Destination	-11		-59	-12	82	0
	31		138	-49	-54	66
US Rail / Short Line						
Origin						
Enroute				-99		-99
Destination	-22			-6	-22	-50
	-22			-105	-22	-149

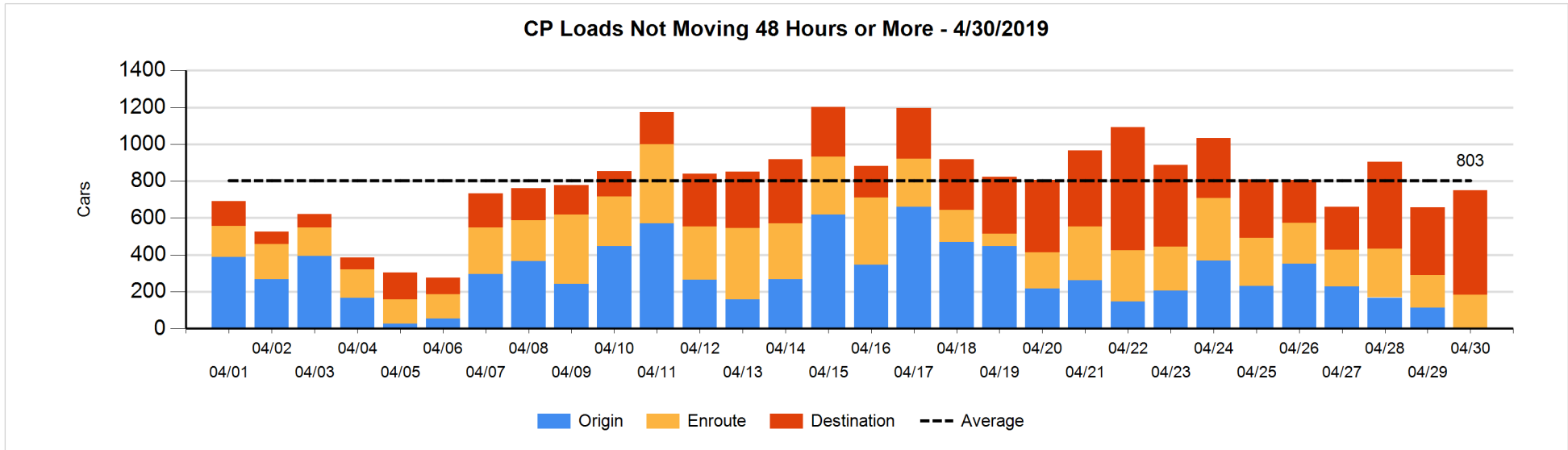
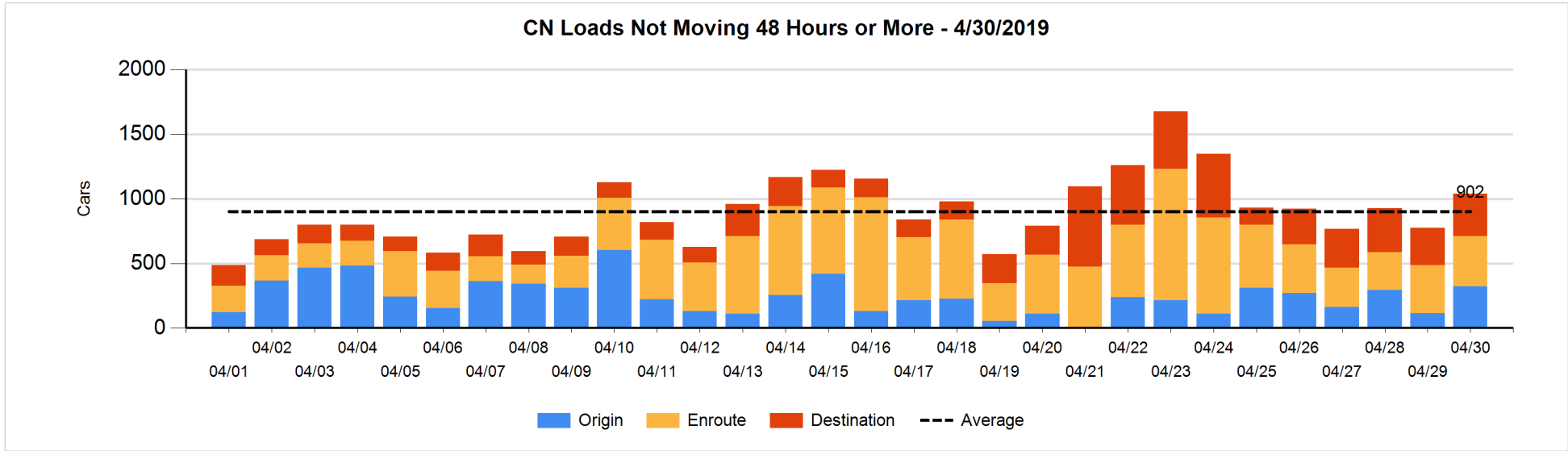


Loads Not Moving 48 Hours or More - 4/30/2019

	E Canada	Prince Rupert	Thunder Bay	USA/MEX	Vancouver	Total
CN						
Origin		207		1	114	322
Enroute	113	81	1	57	137	389
Destination	24	119	96	2	89	330
	137	407	97	60	340	1041
CP						
Origin					1	1
Enroute	1		1	15	166	183
Destination	1		220	36	309	566
	2		221	51	476	750
US Rail / Short Line						
Origin						
Enroute				25		25
Destination				23	19	42
				48	19	67

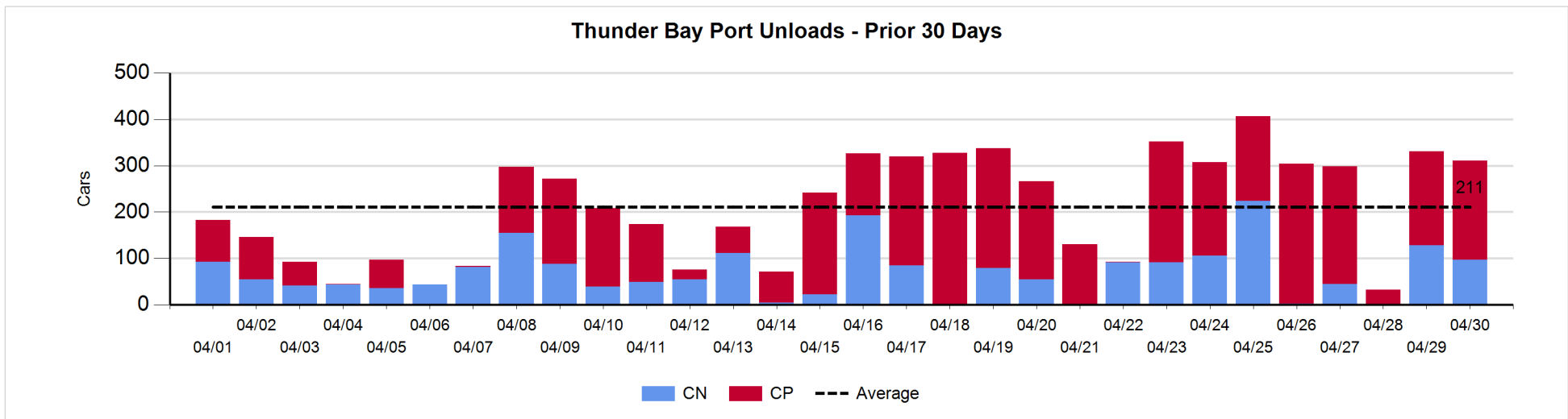
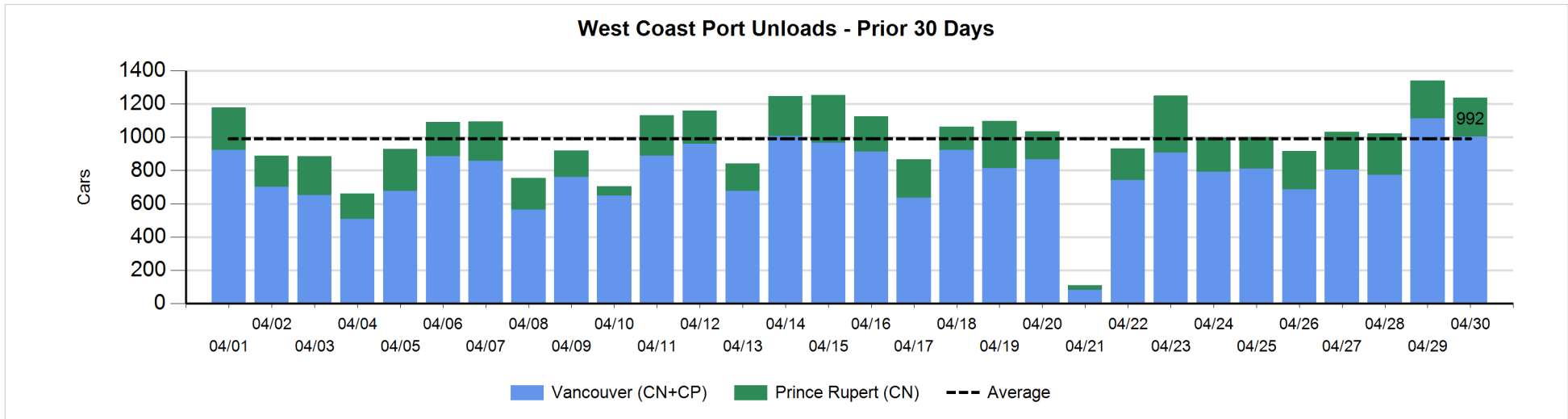
Change in Loads Not Moving 48 Hours or More - 4/30/2019

	E Canada	Prince Rupert	Thunder Bay	USA/MEX	Vancouver	Total
CN						
Origin		207		0	2	209
Enroute	6	-31	-1	42	-1	15
Destination	-14	15	27	-1	16	43
	-8	191	26	41	17	267
CP						
Origin					-113	-113
Enroute	-1		-69	-49	127	8
Destination	-12		148	25	37	198
	-13		79	-24	51	93
US Rail / Short Line						
Origin						
Enroute				1		1
Destination				-21	-13	-34
				-20	-13	-33



Port Unloads - 4/30/2019

	Prince Rupert	Vancouver	West Coast Total	Thunder Bay	Total
CN	234	484	718	97	815
CP		519	519	214	733
	234	1,003	1,237	311	1,548



Port Terminal Status

Vancouver

Daily Activity for 4/30/2019

	Cars Arrived	Cars Received in Interchange	Cars Delivered in Interchange	Cars Placed for Unloading	Loads on Wheels at Destination As of 4/30/2019
CN	556	13	108	408	622
CP	585	108	23	508	988
SRY		10		19	29

Port Unloads

	04/30	04/29	Week To Date	Last Week
CN	484	601	1,085	2,384
CP	519	511	1,030	3,132
SRY	27	13	40	42

Age Profile of Loaded Cars Waiting Placement for Unloading

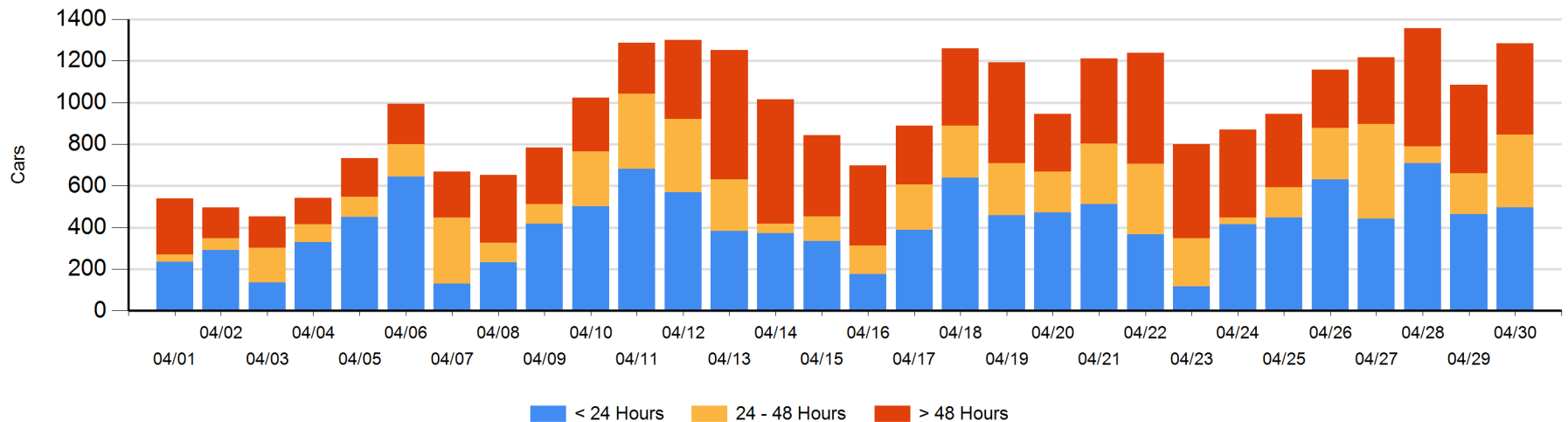
Today

	< 24 Hrs	24 - 48 Hrs	> 48-72 Hrs	> 72 Hrs	Total On Hand
CN	216	180	19	104	519
CP	281	168	56	261	766
SRY					0

Change in Last 24 Hours

	< 24 Hrs	24-48 Hrs	48 - 72 Hrs	> 72 Hrs
CN	-18	160	18	-6
CP	51	-7	7	-6
SRY				

Loaded Cars on Hand Vancouver Waiting for Placement - Last 30 Days All Railways



Port Terminal Status

Prince Rupert

Daily Activity for 4/30/2019

	Cars Arrived	Cars Received in Interchange	Cars Delivered in Interchange	Cars Placed for Unloading	Loads on Wheels at Destination As of 4/30/2019
CN	117			117	224

Port Unloads

	04/30	04/29	Week To Date	Last Week
CN	234	229	463	1,640

Age Profile of Loaded Cars Waiting Placement for Unloading

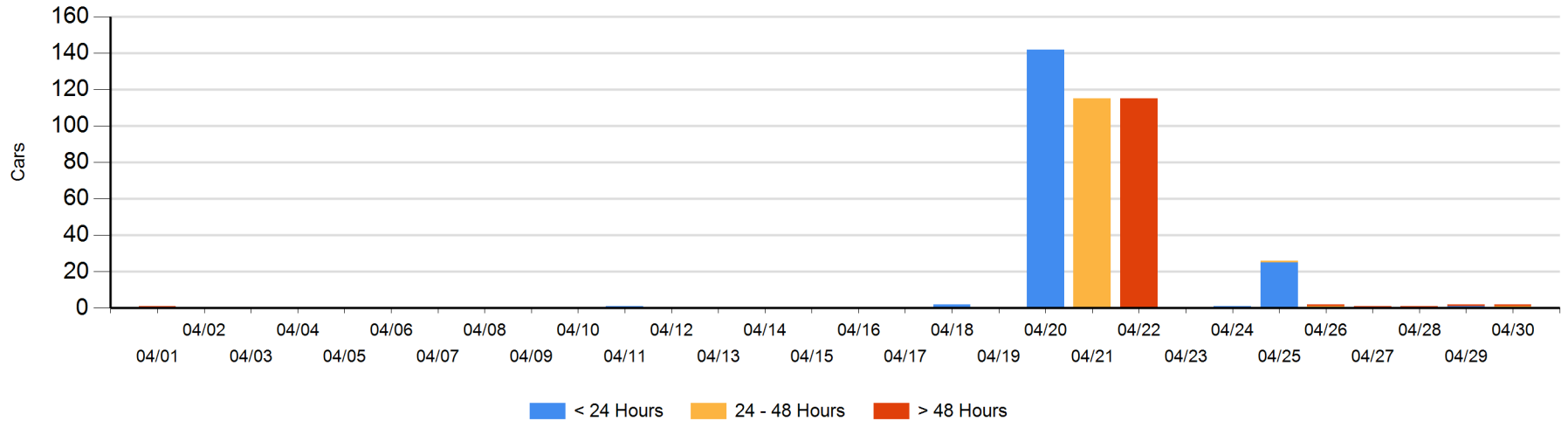
Today

	< 24 Hrs	24 - 48 Hrs	> 48-72 Hrs	> 72 Hrs	Total On Hand
CN		1		1	2

Change in Last 24 Hours

	< 24 Hrs	24-48 Hrs	48 - 72 Hrs	> 72 Hrs
CN	-1	1		0

Loaded Cars on Hand Prince Rupert Waiting for Placement - Last 30 Days All Railways



Port Terminal Status

Thunder Bay

Daily Activity for 4/30/2019

	Cars Arrived	Cars Received in Interchange	Cars Delivered in Interchange	Cars Placed for Unloading	Loads on Wheels at Destination As of 4/30/2019
CN				96	100
CP	155			188	412

Port Unloads

	04/30	04/29	Week To Date	Last Week
CN	97	128	225	559
CP	214	203	417	1,233

Age Profile of Loaded Cars Waiting Placement for Unloading

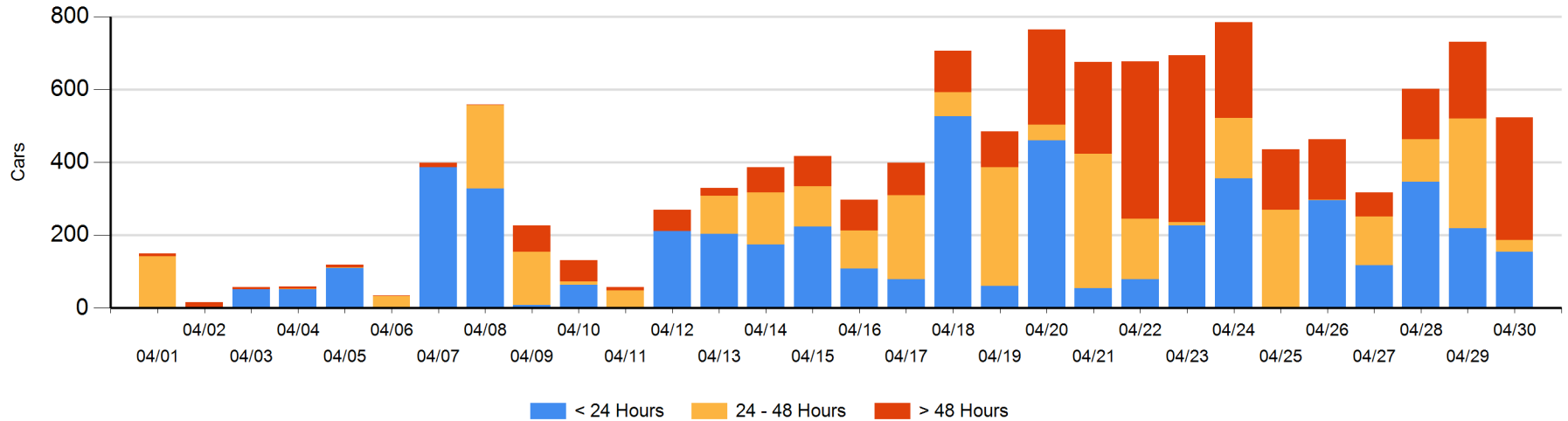
Today

	< 24 Hrs	24 - 48 Hrs	> 48-72 Hrs	> 72 Hrs	Total On Hand
CN			88	7	95
CP	155	31	173	69	428

Change in Last 24 Hours

	< 24 Hrs	24-48 Hrs	48 - 72 Hrs	> 72 Hrs
CN		-128	83	-51
CP	-64	-142	61	33

Loaded Cars on Hand Thunder Bay Waiting for Placement - Last 30 Days All Railways



Measurement Definitions

Loads on Wheels	<p>Count of loaded rail cars including all rail cars that have been released loaded at origin and have not been reported by the railway as unloaded at destination.</p> <p>Counts include all rail cars (hopper cars and boxcars) moving within a pipeline.</p>
Loads Not Moving	<p>Loaded rail cars for which the railways have not reported a movement event for 48 hours or more whether the rail car is at origin, enroute or at destination.</p>
Port Unloads	<p>Count of rail cars reported by railways as unloaded at the western port destinations of Vancouver, Prince Rupert and Thunder Bay.</p> <p>Unload counts include all rail cars (hopper cars and boxcars) unloaded by all receivers including major port terminals, transloaders and other receivers.</p>
Cars Arrived	<p>Count of rail cars reported as arrived at the destination railway terminal.</p>
Cars Received in Interchange	<p>Count of rail cars received in interchange by each railway within a destination railway terminal. Interchange activity is tracked for the Vancouver and Thunder Bay pipelines as applicable.</p>
Cars Delivered in Interchange	<p>Count of rail cars delivered in interchange by each railway within a destination railway terminal. Interchange activity is tracked for the Vancouver and Thunder Bay pipelines as applicable.</p>
Cars Placed for Unloading	<p>Count of rail cars reported by the railways as placed loaded at the receiver's facility for unloading.</p>
Loads on Wheels at Destination	<p>Count of rail cars that remain under load within the destination railway terminal including rail cars that have been reported as placed for unloading but not yet reported as unloaded.</p>
Waiting Placement for Unloading	<p>Count of rail cars that have been reported as arrived at the destination railway terminal but not reported as placed for unloading by the railway.</p> <p>For the Ports of Vancouver, Prince Rupert and Thunder Bay the count of rail cars waiting placement for unloading is categorized by age – i.e. the elapsed time from arrival at destination to the current report date.</p>