

Note to Reader

Alliance Grain Terminal in Vancouver has now begun planned maintenance which is expected to continue until mid-August.

SPEED READ

- Loads on wheels declined overnight, marking a decrease in both CN and CP volumes. On a net basis, volumes declined due to lower traffic across all corridors.
- Network fluidity improved overnight, led by a decrease in idle car counts on CN by 48% offset by an increase in idle car counts on CP by 22%. The total count of cars for 4+ days on both railways declined for the fourth consecutive day, down 24% overnight - currently at 646 cars.
- One day in Week 2 unloads now behind prior week's performance by nearly 200 unloads, marking reduced unloads at Thunder Bay offset by an improvement in week over week performance at Prince Rupert and Vancouver.

Loads on Wheels

- Loads on wheels decreased 6% (-505) overnight, due to lower volumes on both CN and CP - combined total at 8,144 and 1% below the trailing 30-day average.
- On a net basis, the fall in loads on wheels reflects reduced traffic levels across all corridors.
- CN volumes declined 5% (-250) overnight with lower traffic across all corridors other than Thunder Bay. System wide CN loads on wheels now at 4,610 and 9% above the trailing 30-day average.
- CP volumes decreased significantly by 12% (-401) overnight driven by a decline in volumes across all corridors. CP system wide loads on wheels now at 3,039 and 19% below the trailing 30-day average.
- Vancouver currently at 4,412, down 5% (-229) overnight and have now declined for three consecutive days, and 4% above the trailing 30-day average.
- The Prince Rupert pipeline currently at 1,005, decreased significantly by 11% (-118) overnight and 3% below the trailing 30 day-average.
- Thunder Bay volumes declined for the sixth consecutive day, down 4% (-68) overnight - presently at 1,509 and 10% below the trailing 30-day average with 61% of traffic moving on CP.

Hopper Car Rationing

- No hopper car rationing was reported for either CN or CP in week 1 and none expected in week 2.

Loads Not Moving

- **The count of cars not moving for 48+ hours decreased 21% (-423) overnight, reflecting reduced counts on CN offset by higher counts on CP. Idle car counts currently at 1,587 and 14% below the trailing 30 day-average.**
- CN
 - **The count of idle cars declined significantly by 48% (-592) overnight - idle car counts now at 641.**
 - The number of cars idle for 4+ days decreased for four consecutive days, down 37% (-200) overnight - currently at 347 cars.
 - The count of cars not moving for 7+ days decreased 30% (-129) overnight - presently at 297 cars.
 - Vancouver represents 59% of all idle cars.
 - In total 51% of all idle cars are dwelling at origin locations.
- CP

- **CP counts rose 22% (+169) overnight and have now increased for the third consecutive day - idle car counts currently at 946.**
- The number of cars idle for 4+ days was largely unchanged (-1) overnight - now at 299 cars.
- The number of cars idle for 7+ days increased slightly by 2% (+2) overnight - presently at 101 cars.
- Vancouver accounts for 39% of all idle cars.
- In total 34% of all idle cars are dwelling at origin locations.

Port Performance

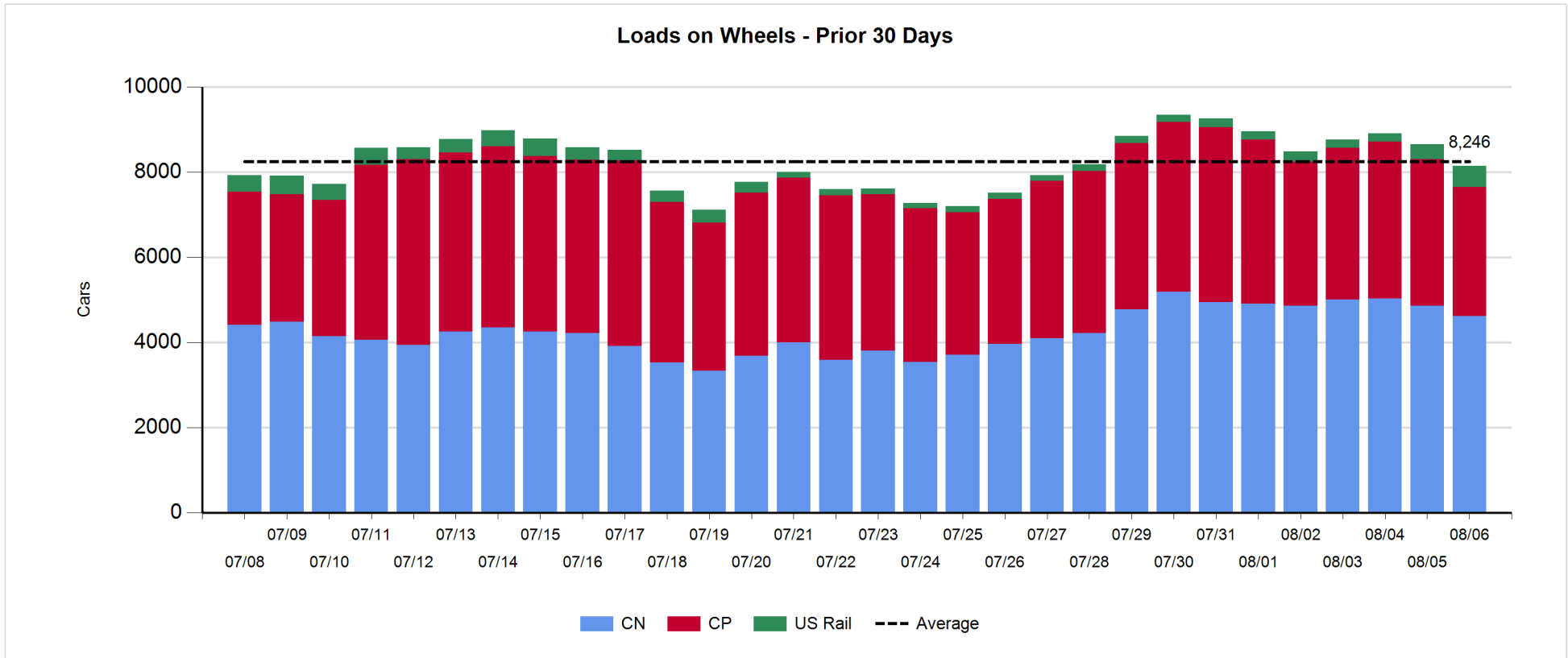
- CN and CP reported a total of 1,019 cars unloaded at the three major ports, now 19% above the trailing 30-day average. One day in Week 2 unloads are tracking behind last week's pace by around 200 unloads, reflecting lower unloads at Thunder Bay offset by higher unloads at Prince Rupert and Vancouver.
- Vancouver
 - 635 unloads reported by CN and CP at the Port of Vancouver; CN - 311 and CP - 324. One day in Week 2 unloads are tracking slightly ahead of last week's performance by about 30 unloads.
 - There are around 700 cars on site at Vancouver with nearly 450 cars arriving at the port in the last 24 hours.
 - CN and CP have more than 1,200 cars in British Columbia en route to Vancouver, with more than 750 Kamloops and west and 63% of traffic currently moving on CN.
- Prince Rupert
 - Prince Rupert reported 217 unloads, now ahead of last week's unloads after one day by about 30 unloads.
 - Loads on wheels now slightly above 1,000 cars.
 - There are about 300 cars west of Jasper - predominantly Prince George and west.
 - There are around 10 cars on site at Prince Rupert with about 30 cars arriving at the port in the last 24 hours. Given the structure of the pipeline, there is a chance unloads might be challenged in the next day or two.
- Thunder Bay
 - 167 unloads reported at Thunder Bay yesterday. One day in Week 2 unloads are tracking behind last week's pace by more than 250 unloads.
 - There are more than 1,000 cars on site at Thunder Bay with about 200 cars arriving at the port in the prior 24 hours.
 - There are nearly 200 cars en route to Thunder Bay from Winnipeg and east. Cars on hand and those en route should support unloads for the balance of the week.

Daily Loads on Wheels - 8/6/2018

	E Canada	Prince Rupert	Thunder Bay	USA/MEX	Vancouver	Total
CN	203	1,005	591	289	2,522	4,610
CP	46		918	211	1,864	3,039
Short Line	10				26	36
US Rail				459		459
	259	1,005	1,509	959	4,412	8,144

Change in Loads on Wheels - Prior 24 Hours

	E Canada	Prince Rupert	Thunder Bay	USA/MEX	Vancouver	Total
CN	-35	-118	8	-16	-89	-250
CP	-1		-76	-186	-138	-401
Short Line	0				-2	-2
US Rail				148		148
	-36	-118	-68	-54	-229	-505

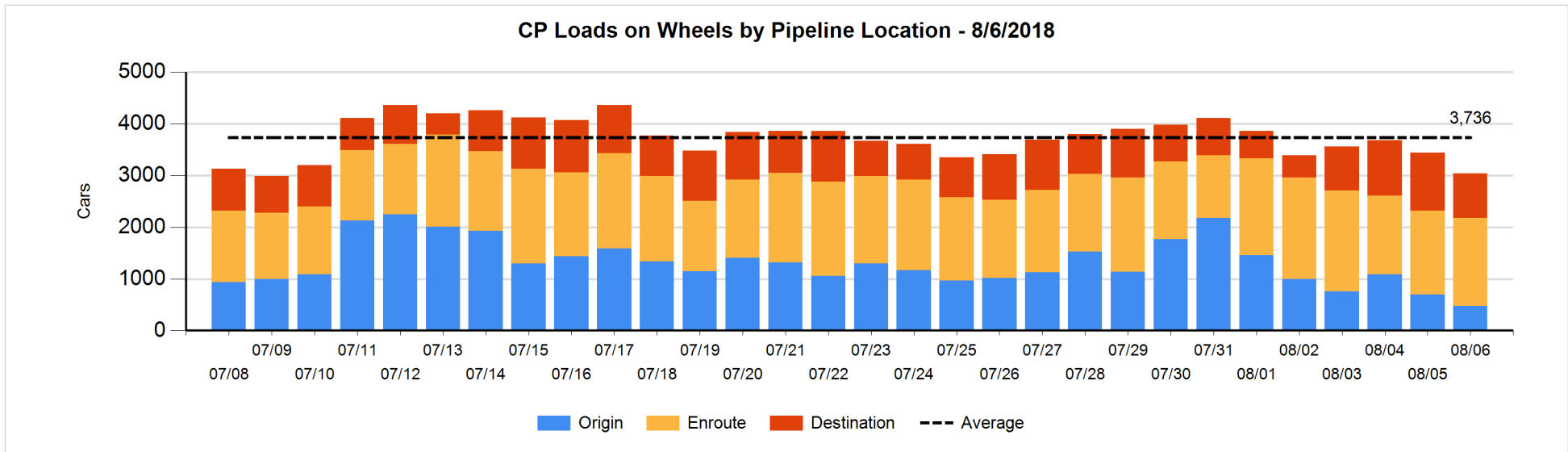
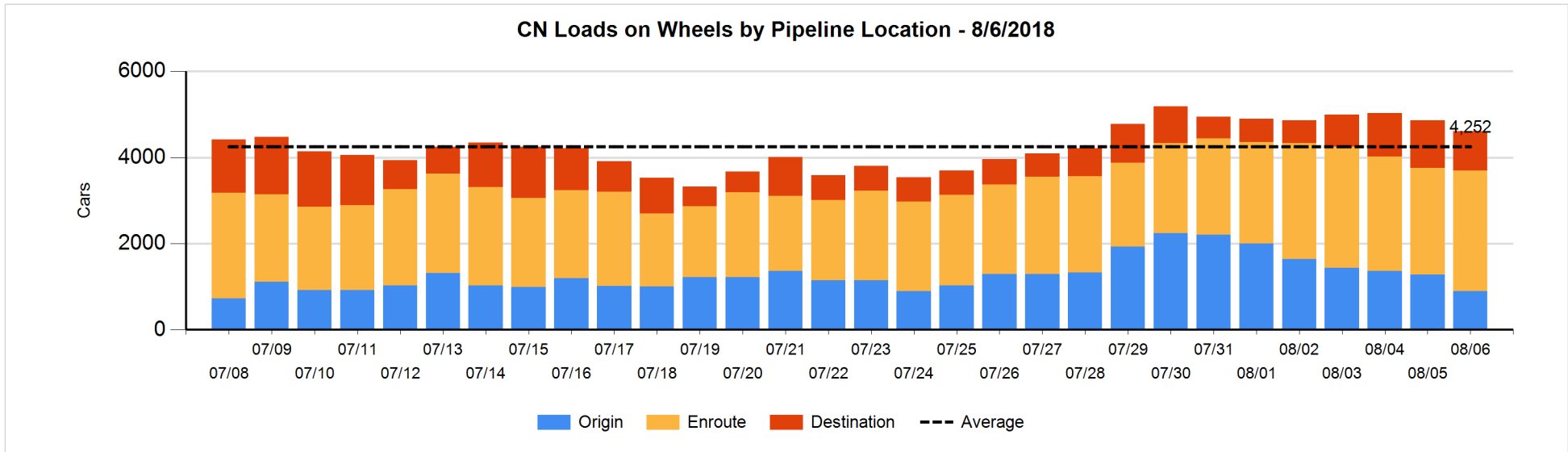


Daily Loads on Wheels By Pipeline Location - 8/6/2018

	E Canada	Prince Rupert	Thunder Bay	USA/MEX	Vancouver	Total
CN						
Origin	26	264	99	37	466	892
Enroute	172	730	123	248	1,533	2,806
Destination	5	11	369	4	523	912
	203	1,005	591	289	2,522	4,610
CP						
Origin	3		29	52	393	477
Enroute	42		217	127	1,311	1,697
Destination	1		672	32	160	865
	46		918	211	1,864	3,039
US Rail / Short Line						
Origin						
Enroute	9			319		328
Destination	1			140	26	167
	10			459	26	495

Change in Daily Loads on Wheels By Pipeline Location - Prior 24 Hours

	E Canada	Prince Rupert	Thunder Bay	USA/MEX	Vancouver	Total
CN						
Origin	-78	-207	50	-78	-71	-384
Enroute	59	279	-1	67	-74	330
Destination	-16	-190	-41	-5	56	-196
	-35	-118	8	-16	-89	-250
CP						
Origin	0		0	0	-222	-222
Enroute	-1		-142	-105	328	80
Destination	0		66	-81	-244	-259
	-1		-76	-186	-138	-401
US Rail / Short Line						
Origin						
Enroute	0			51		51
Destination	0			97	-2	95
	0			148	-2	146

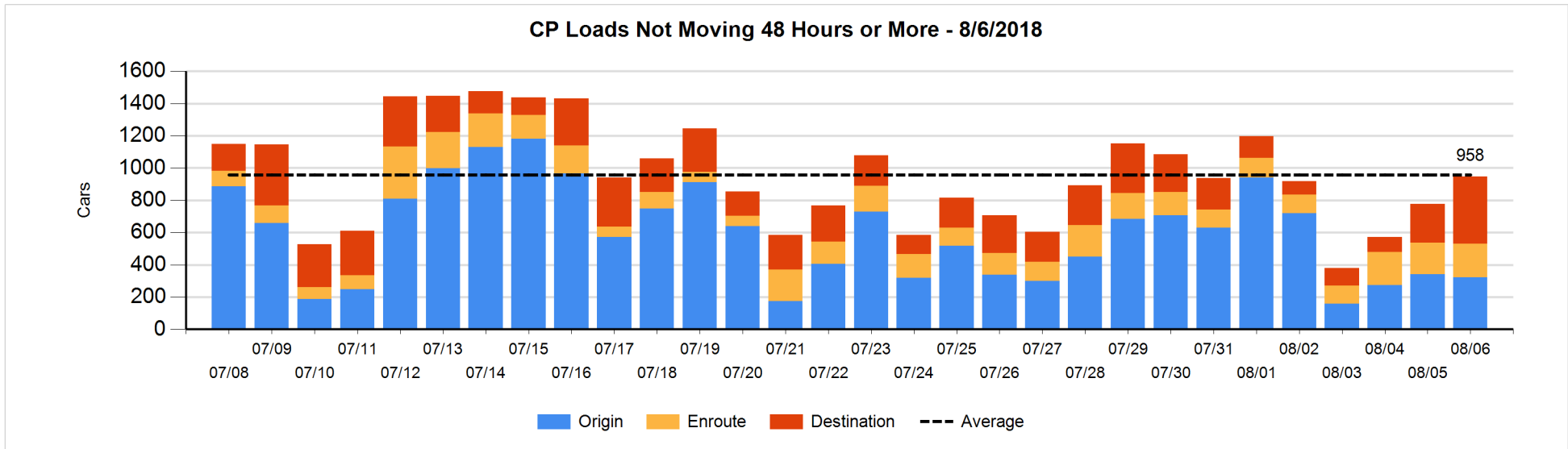
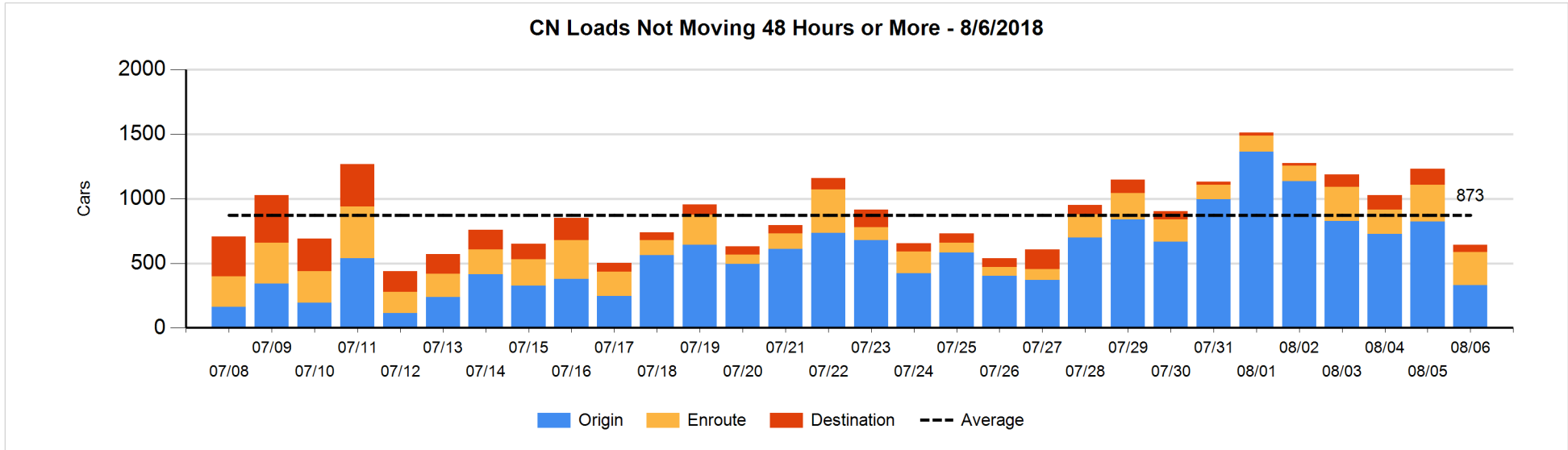


Loads Not Moving 48 Hours or More - 8/6/2018

	E Canada	Prince Rupert	Thunder Bay	USA/MEX	Vancouver	Total
CN						
Origin	26	99		37	168	330
Enroute	6	51	1	15	184	257
Destination	1	1	25	3	24	54
	33	151	26	55	376	641
CP						
Origin	3		29	52	237	321
Enroute	10		34	65	99	208
Destination	1		380	3	33	417
	14		443	120	369	946
US Rail / Short Line						
Origin						
Enroute	5			42		47
Destination	1			18	10	29
	6			60	10	76

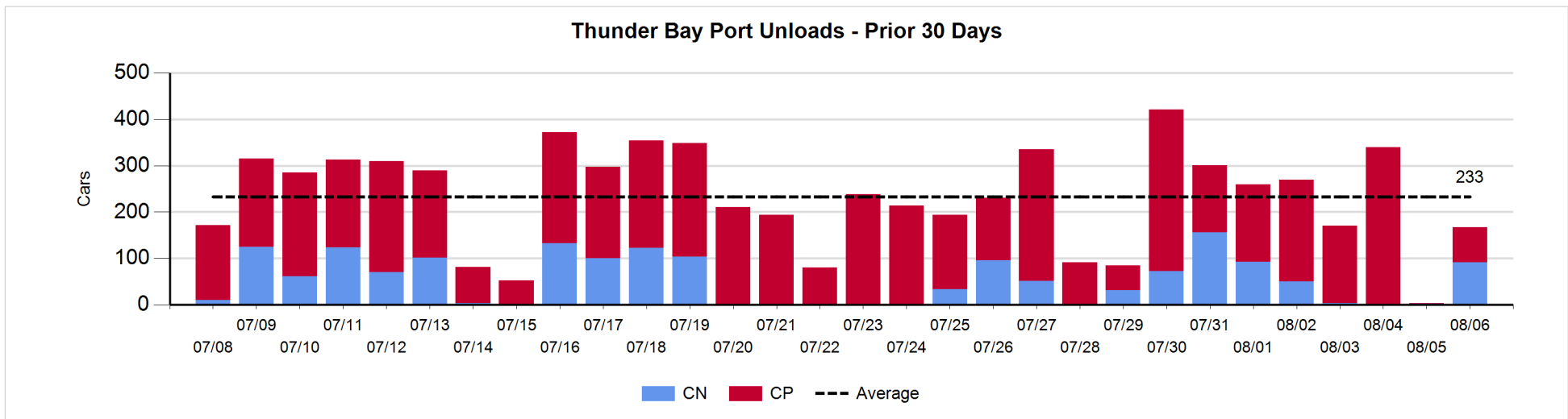
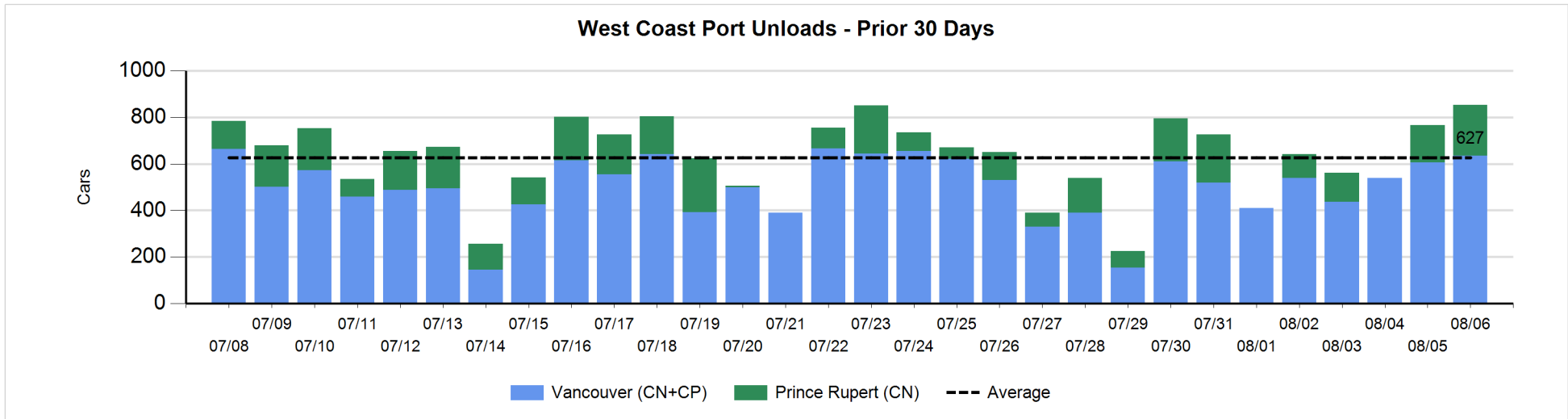
Change in Loads Not Moving 48 Hours or More - 8/6/2018

	E Canada	Prince Rupert	Thunder Bay	USA/MEX	Vancouver	Total
CN						
Origin	-25	-203	-37	-77	-151	-493
Enroute	0	44	0	1	-73	-28
Destination	-2	-3	25	-5	-86	-71
	-27	-162	-12	-81	-310	-592
CP						
Origin	0		0	25	-46	-21
Enroute	0		14	-5	5	14
Destination	0		147	0	29	176
	0		161	20	-12	169
US Rail / Short Line						
Origin						
Enroute	0			-31		-31
Destination	0			-8	0	-8
	0			-39	0	-39



Port Unloads - 8/6/2018

	Prince Rupert	Vancouver	West Coast Total	Thunder Bay	Total
CN	217	311	528	91	619
CP		324	324	76	400
	217	635	852	167	1,019



Port Terminal Status

Vancouver

Daily Activity for 8/6/2018

	Cars Arrived	Cars Received in Interchange	Cars Delivered in Interchange	Cars Placed for Unloading	Loads on Wheels at Destination As of 8/6/2018
CN	332	106	71	160	523
CP	115	71	106	231	160
SRY				18	26

Port Unloads

	08/06	08/05	Week To Date	Last Week
CN	311	354	311	2,131
CP	324	251	324	1,530
SRY	2		2	24

Age Profile of Loaded Cars Waiting Placement for Unloading

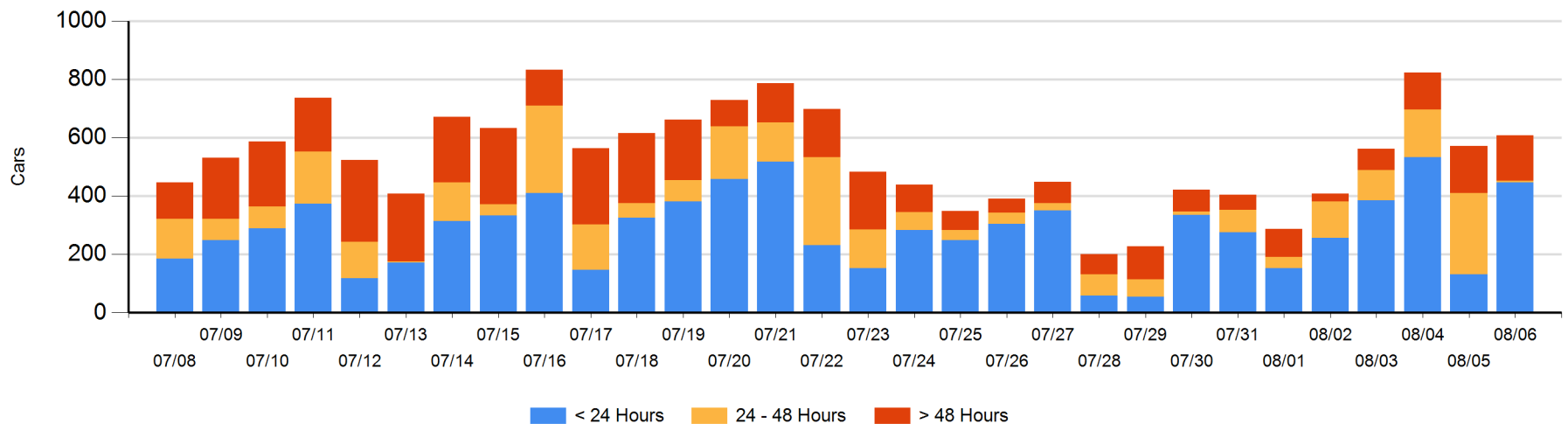
Today

	< 24 Hrs	24 - 48 Hrs	> 48-72 Hrs	> 72 Hrs	Total On Hand
CN	332			81	413
CP	115	6	62	13	196
SRY					0

Change in Last 24 Hours

	< 24 Hrs	24-48 Hrs	48 - 72 Hrs	> 72 Hrs
CN	246		-118	69
CP	69	-272	60	-16
SRY				

Loaded Cars on Hand Vancouver Waiting for Placement - Last 30 Days All Railways



Port Terminal Status

Prince Rupert

Daily Activity for 8/6/2018

	Cars Arrived	Cars Received in Interchange	Cars Delivered in Interchange	Cars Placed for Unloading	Loads on Wheels at Destination As of 8/6/2018
CN	27			27	11

Port Unloads

	08/06	08/05	Week To Date	Last Week
CN	217	161	217	779

Age Profile of Loaded Cars Waiting Placement for Unloading

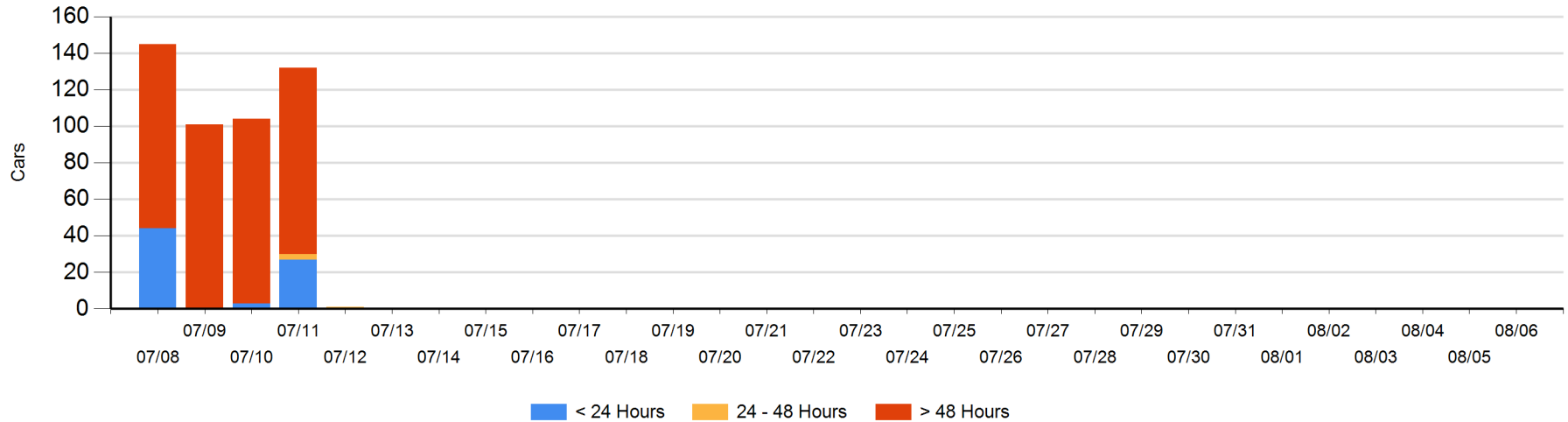
Today

	< 24 Hrs	24 - 48 Hrs	> 48-72 Hrs	> 72 Hrs	Total On Hand
CN					0

Change in Last 24 Hours

	< 24 Hrs	24-48 Hrs	48 - 72 Hrs	> 72 Hrs
CN				

Loaded Cars on Hand Prince Rupert Waiting for Placement - Last 30 Days All Railways



Port Terminal Status

Thunder Bay

Daily Activity for 8/6/2018

	Cars Arrived	Cars Received in Interchange	Cars Delivered in Interchange	Cars Placed for Unloading	Loads on Wheels at Destination As of 8/6/2018
CN	50			115	369
CP	142			112	672

Port Unloads

	08/06	08/05	Week To Date	Last Week
CN	91	2	91	375
CP	76	2	76	1,391

Age Profile of Loaded Cars Waiting Placement for Unloading

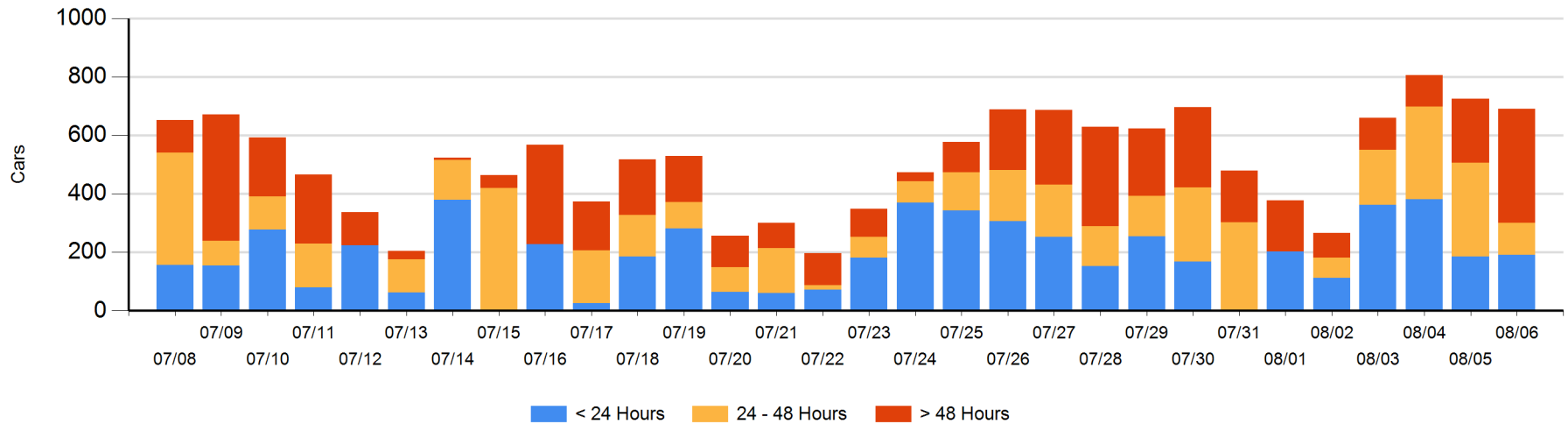
Today

	< 24 Hrs	24 - 48 Hrs	> 48-72 Hrs	> 72 Hrs	Total On Hand
CN	50	90	25	8	173
CP	142	18	147	210	517

Change in Last 24 Hours

	< 24 Hrs	24-48 Hrs	48 - 72 Hrs	> 72 Hrs
CN	-84	-6	17	8
CP	90	-207	26	121

Loaded Cars on Hand Thunder Bay Waiting for Placement - Last 30 Days All Railways



Measurement Definitions

Loads on Wheels	<p>Count of loaded rail cars including all rail cars that have been released loaded at origin and have not been reported by the railway as unloaded at destination.</p> <p>Counts include all rail cars (hopper cars and boxcars) moving within a pipeline.</p>
Loads Not Moving	<p>Loaded rail cars for which the railways have not reported a movement event for 48 hours or more whether the rail car is at origin, enroute or at destination.</p>
Port Unloads	<p>Count of rail cars reported by railways as unloaded at the western port destinations of Vancouver, Prince Rupert and Thunder Bay.</p> <p>Unload counts include all rail cars (hopper cars and boxcars) unloaded by all receivers including major port terminals, transloaders and other receivers.</p>
Cars Arrived	<p>Count of rail cars reported as arrived at the destination railway terminal.</p>
Cars Received in Interchange	<p>Count of rail cars received in interchange by each railway within a destination railway terminal. Interchange activity is tracked for the Vancouver and Thunder Bay pipelines as applicable.</p>
Cars Delivered in Interchange	<p>Count of rail cars delivered in interchange by each railway within a destination railway terminal. Interchange activity is tracked for the Vancouver and Thunder Bay pipelines as applicable.</p>
Cars Placed for Unloading	<p>Count of rail cars reported by the railways as placed loaded at the receiver's facility for unloading.</p>
Loads on Wheels at Destination	<p>Count of rail cars that remain under load within the destination railway terminal including rail cars that have been reported as placed for unloading but not yet reported as unloaded.</p>
Waiting Placement for Unloading	<p>Count of rail cars that have been reported as arrived at the destination railway terminal but not reported as placed for unloading by the railway.</p> <p>For the Ports of Vancouver, Prince Rupert and Thunder Bay the count of rail cars waiting placement for unloading is categorized by age – i.e. the elapsed time from arrival at destination to the current report date.</p>