

### Note to Reader

Alliance Grain Terminal in Vancouver has now begun planned maintenance which is expected to continue until mid-August.

### SPEED READ

- Loads on wheels declined slightly overnight, reflecting a fall in CN volumes offset by higher CP volumes. On a net basis, traffic levels decreased due to reduced traffic in the Thunder Bay corridor offset by increased volumes across the remaining corridors - E Canada, Vancouver, Prince Rupert and USA/MEX.
- Network fluidity improved overnight, led by a decrease in idle car counts on both CN and CP by 21% and 24%, respectively. The total count of cars for 4+ days on both railways declined for the fifth consecutive day, down 2% overnight - presently at 634 cars.
- Two days in Week 2 unloads now behind prior week's performance by fewer than 250 unloads, marking lower unloads at Thunder Bay and Prince Rupert offset by improved week over week performance at Vancouver.

=====

### Loads on Wheels

- Loads on wheels decreased marginally (-14) overnight due to reduced traffic levels on CN offset by higher traffic on CP - combined total at 8,148 and 1% below the trailing 30-day average.
- On a net basis, the slight decline in loads on wheels indicates lower volumes in the Thunder Bay corridor offset by higher volumes across the remaining corridors - E Canada, Vancouver, Prince Rupert and USA/MEX.
- CN volumes declined slightly by 1% (-25) overnight with reduced traffic in the Thunder Bay and Vancouver corridors offset by increased volumes in the E Canada, Prince Rupert and USA/MEX corridors. System wide CN loads on wheels now at 4,586 and 8% above the trailing 30-day average.
- CP volumes rose 3% (+99) overnight driven by an increase in traffic levels in the Vancouver and USA/MEX corridors offset by a decline in traffic in the Thunder Bay and E Canada corridors. CP system wide loads on wheels now at 3,144 and 16% below the trailing 30-day average.
- Vancouver now at 4,542, gained 3% (+113) overnight and 7% above the trailing 30-day average.
- The Prince Rupert pipeline presently at 1,097, up 9% (+91) overnight and 6% above the trailing 30-day average.
- Thunder Bay volumes fell significantly by 24% (-356) overnight and have now decreased for the seventh consecutive day - presently at 1,153, the lowest seen in the last 30 days, and 31% below the trailing 30-day average with 64% of traffic moving on CP.

### Hopper Car Rationing

- No hopper car rationing was reported for either CN or CP in week 1 and none expected in week 2.

### Loads Not Moving

- The count of cars not moving for 48+ hours decreased 23% (-356) overnight, reflecting lower counts on both railways. Idle car counts presently at 1,221 and 33% below the trailing 30 day-average.
- CN
  - **The count of idle cars fell 21% (-134) overnight - idle car counts now at 508.**
  - The number of cars idle for 4+ days declined for five consecutive days, down 34% (-118) overnight - now at 230 cars.
  - The count of cars not moving for 7+ days decreased significantly by 53% (-158) overnight and have now decreased for the third consecutive day - now at 139 cars.

- Vancouver represents 30% of all idle cars.
- In total 55% of all idle cars are dwelling at origin locations.
- CP
  - **CP counts decreased 24% (-222) overnight - idle car counts presently at 713.**
  - The number of cars idle for 4+ days increased 35% (+105) overnight - presently at 404 cars.
  - The number of cars idle for 7+ days surged by 46% (+46) overnight - now at 147 cars.
  - Vancouver accounts for 37% of all idle cars.
  - In total 30% of all idle cars are dwelling at origin locations.

### **Port Performance**

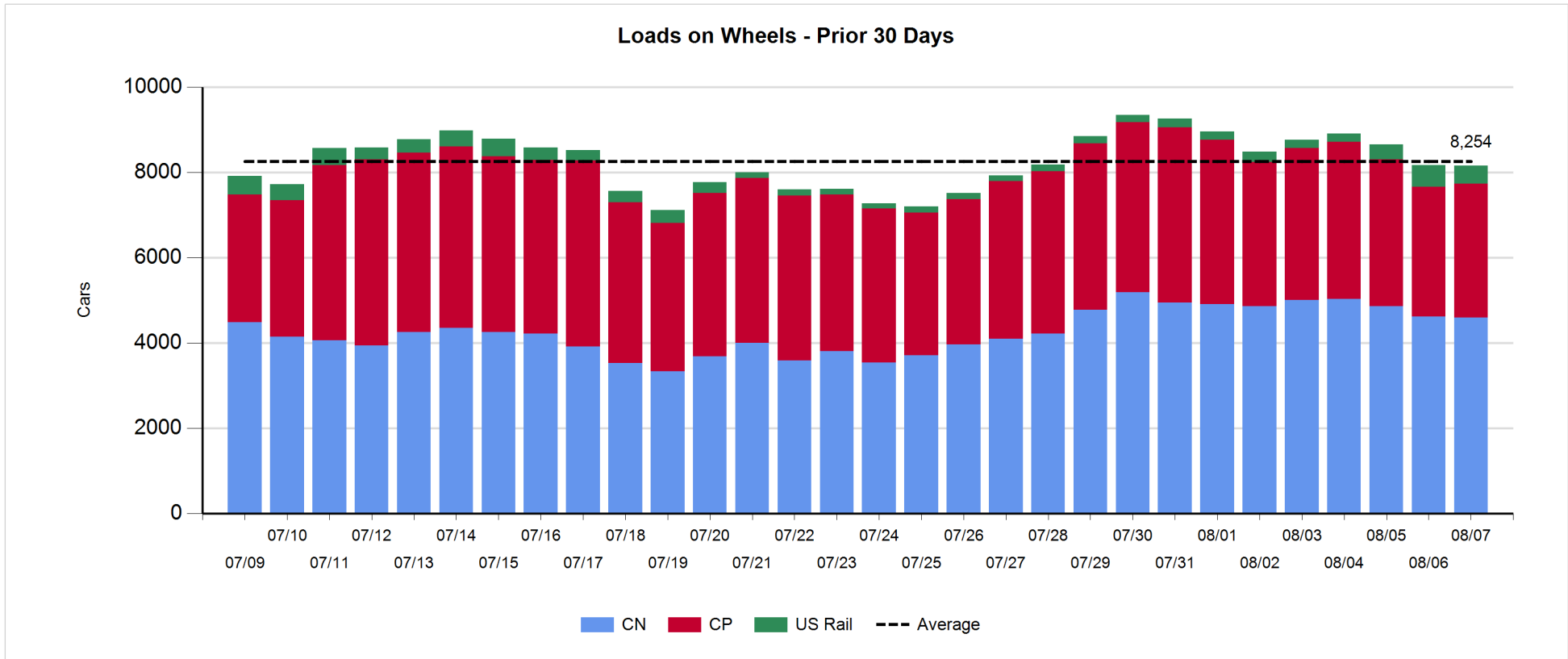
- CN and CP reported a total of 974 cars unloaded at the three major ports, now 14% above the trailing 30-day average. Two days in Week 2 unloads are tracking behind last week's pace by fewer than 250 unloads, reflecting lower unloads at Thunder Bay and Prince Rupert offset by higher unloads at Vancouver.
- Vancouver
  - 499 unloads reported by CN and CP at the Port of Vancouver; CN - 312 and CP - 187. Two days in Week 2 unloads are tracking ahead of last week's performance by about 20 unloads.
  - There are about 1,100 cars on site at Vancouver with around 900 cars arriving at the port in the last 24 hours.
  - CN and CP have nearly 1,050 cars in British Columbia en route to Vancouver, with less than 500 Kamloops and west and 59% of traffic currently moving on CP.
- Prince Rupert
  - Prince Rupert reported 114 unloads, now behind last week's unloads after two days by more than 50 unloads.
  - Loads on wheels now slightly fewer than 1,100 cars.
  - There are nearly 200 cars west of Jasper - predominantly Prince George and west.
  - There are currently 100 cars on site at Prince Rupert with about 200 cars arriving at the port in the last 24 hours. Given the structure of the pipeline, there is a chance unloads might be challenged in the next few days.
- Thunder Bay
  - 361 unloads reported at Thunder Bay yesterday. Two days in Week 2 unloads are tracking behind last week's pace by about 200 unloads.
  - There are about 800 cars on site at Thunder Bay with less than 150 cars arriving at the port in the prior 24 hours.
  - There are 200 cars en route to Thunder Bay from Winnipeg and east. Cars on hand and those en route should support unloads for the balance of the week.

**Daily Loads on Wheels - 8/7/2018**

	E Canada	Prince Rupert	Thunder Bay	USA/MEX	Vancouver	Total
CN	345	1,097	419	362	2,363	4,586
CP	19		734	232	2,159	3,144
Short Line	25				20	45
US Rail				373		373
	389	1,097	1,153	967	4,542	8,148

**Change in Loads on Wheels - Prior 24 Hours**

	E Canada	Prince Rupert	Thunder Bay	USA/MEX	Vancouver	Total
CN	142	91	-172	73	-159	-25
CP	-27		-184	32	278	99
Short Line	15				-6	9
US Rail				-97		-97
	130	91	-356	8	113	-14

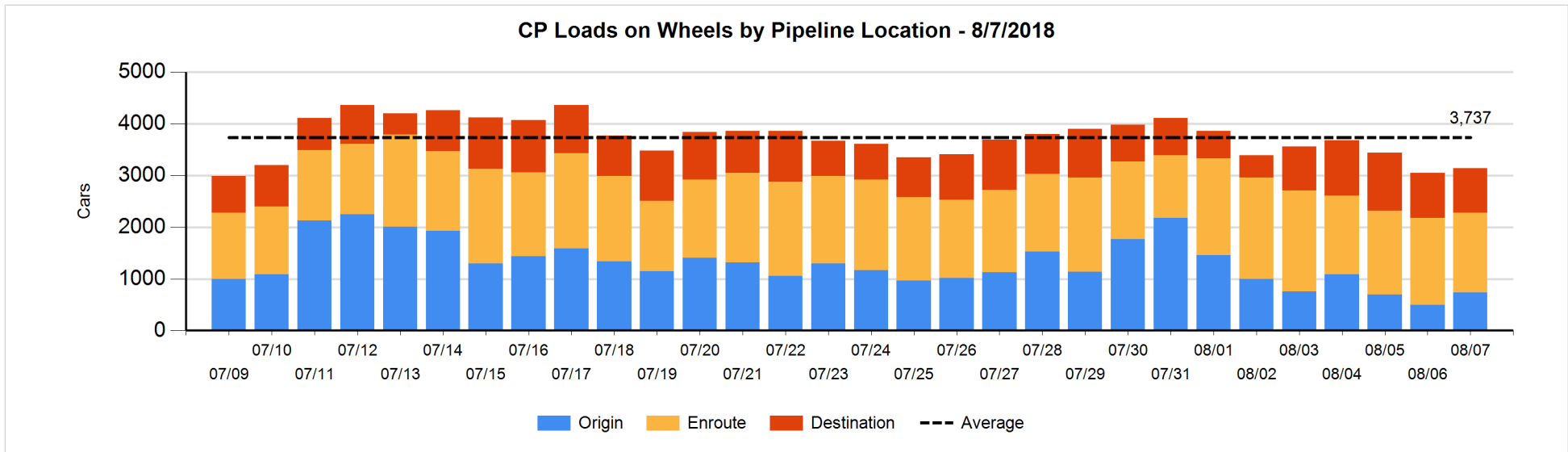
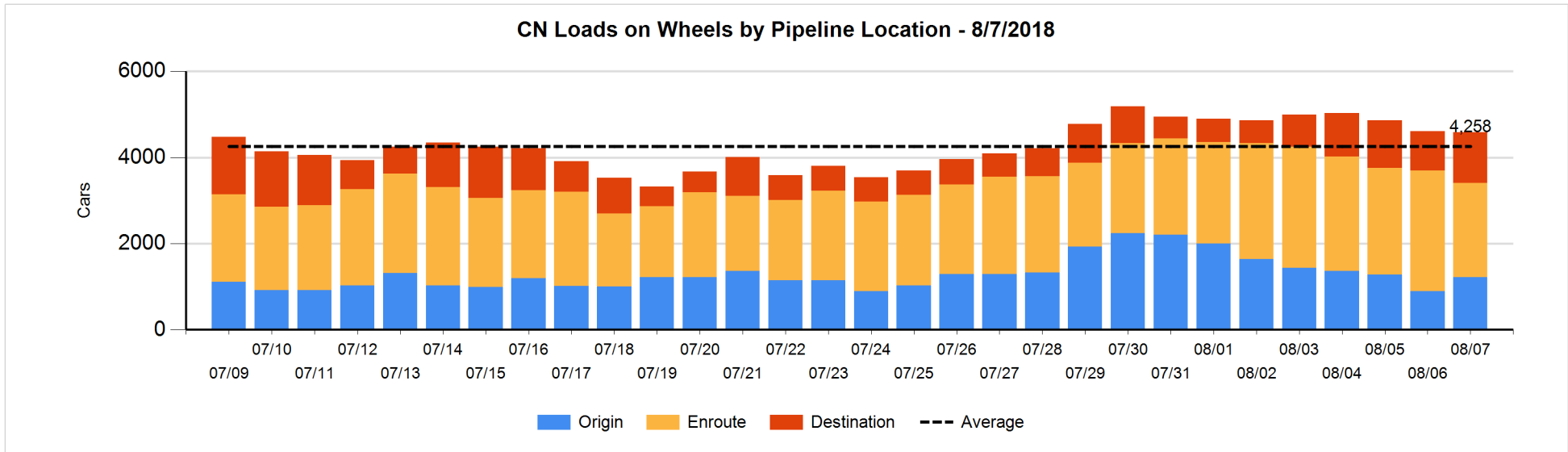


**Daily Loads on Wheels By Pipeline Location - 8/7/2018**

	E Canada	Prince Rupert	Thunder Bay	USA/MEX	Vancouver	Total
CN						
Origin	157	470	99	88	408	1,222
Enroute	179	529	65	254	1,152	2,179
Destination	9	98	255	20	803	1,185
	345	1,097	419	362	2,363	4,586
CP						
Origin	3		33	75	626	737
Enroute	15		151	119	1,255	1,540
Destination	1		550	38	278	867
	19		734	232	2,159	3,144
US Rail / Short Line						
Origin						
Enroute	8			306		314
Destination	17			67	20	104
	25			373	20	418

**Change in Daily Loads on Wheels By Pipeline Location - Prior 24 Hours**

	E Canada	Prince Rupert	Thunder Bay	USA/MEX	Vancouver	Total
CN						
Origin	131	205	0	51	-58	329
Enroute	7	-201	-58	6	-381	-627
Destination	4	87	-114	16	280	273
	142	91	-172	73	-159	-25
CP						
Origin	0		4	23	216	243
Enroute	-27		-66	3	-56	-146
Destination	0		-122	6	118	2
	-27		-184	32	278	99
US Rail / Short Line						
Origin						
Enroute	-1			-24		-25
Destination	16			-73	-6	-63
	15			-97	-6	-88

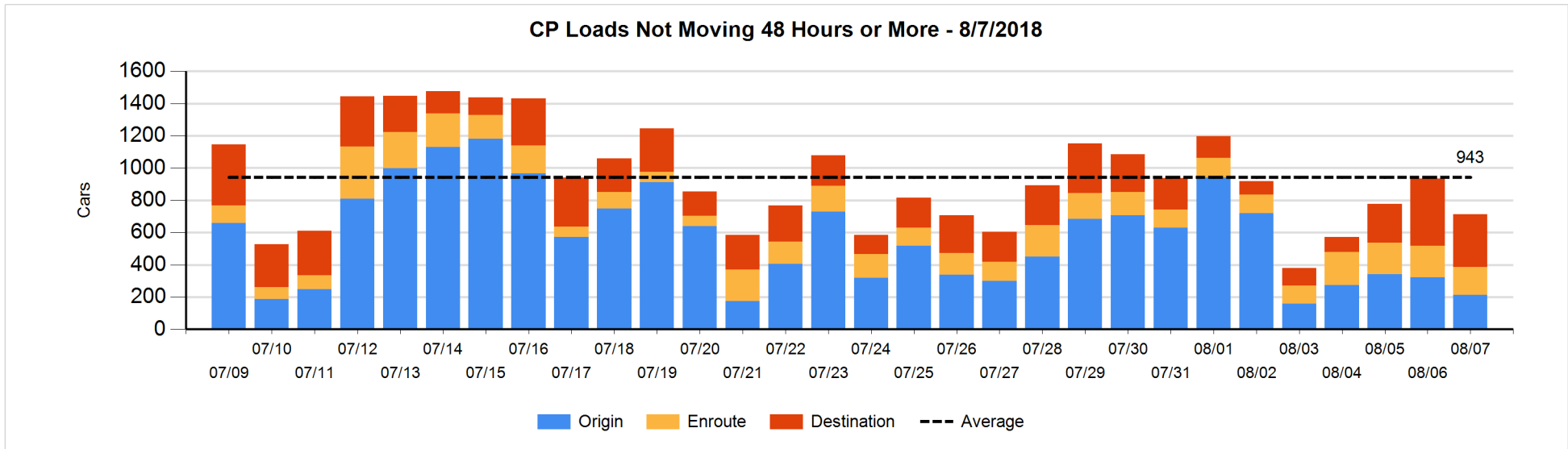
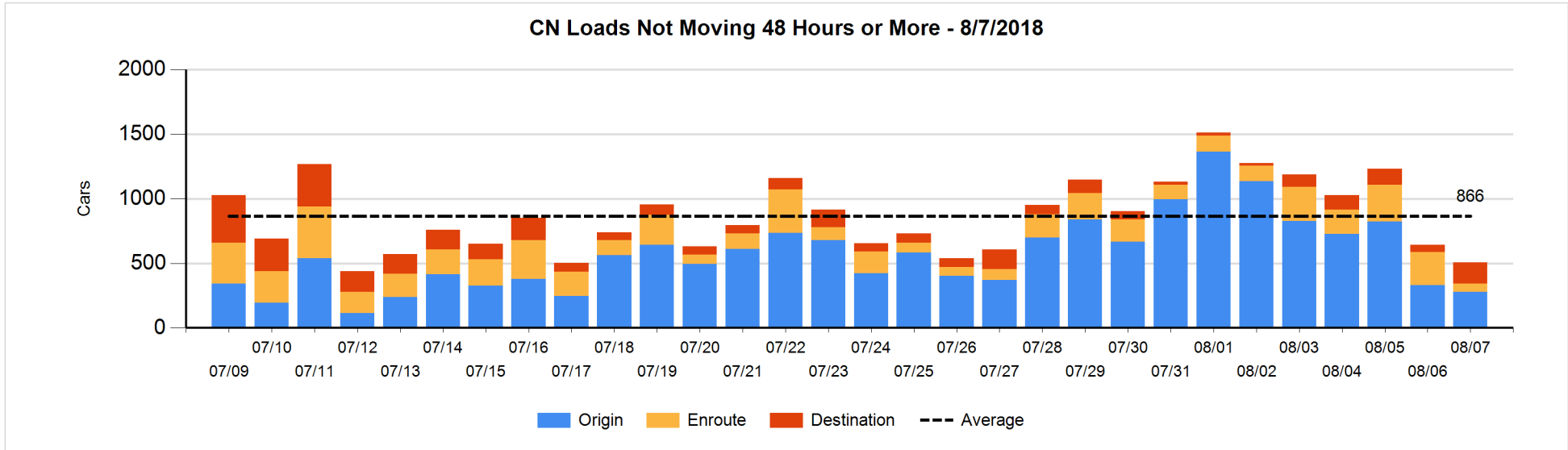


**Loads Not Moving 48 Hours or More - 8/7/2018**

	E Canada	Prince Rupert	Thunder Bay	USA/MEX	Vancouver	Total
<b>CN</b>						
Origin		166		37	77	280
Enroute	1	7	2	15	38	63
Destination	3		120	4	38	165
	4	173	122	56	153	508
<b>CP</b>						
Origin	3		29	27	154	213
Enroute	10		26	40	98	174
Destination	1		314	2	9	326
	14		369	69	261	713
<b>US Rail / Short Line</b>						
Origin						
Enroute	7			31		38
Destination	1			14	12	27
	8			45	12	65

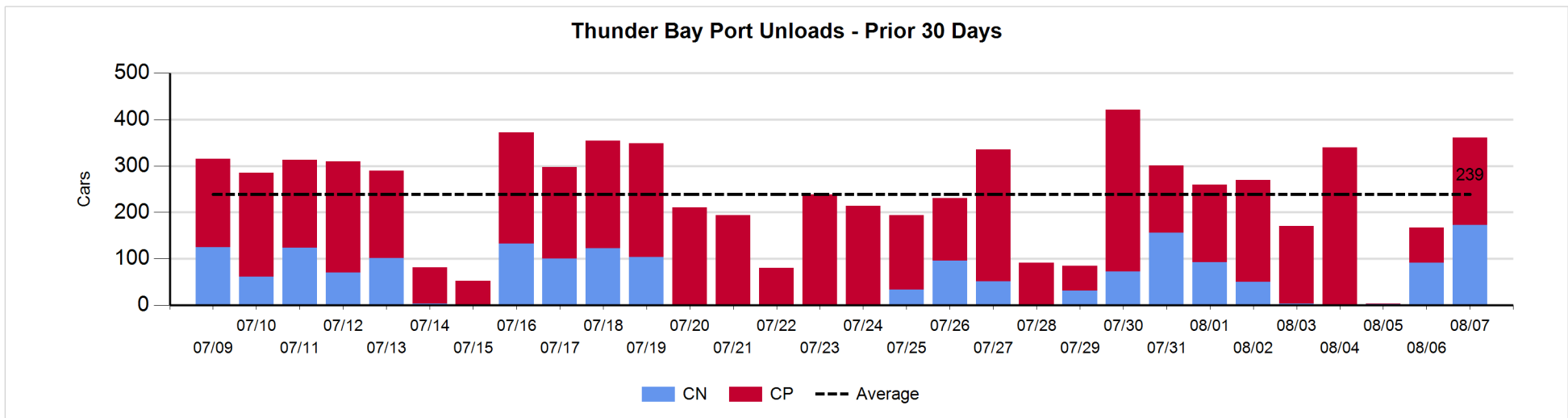
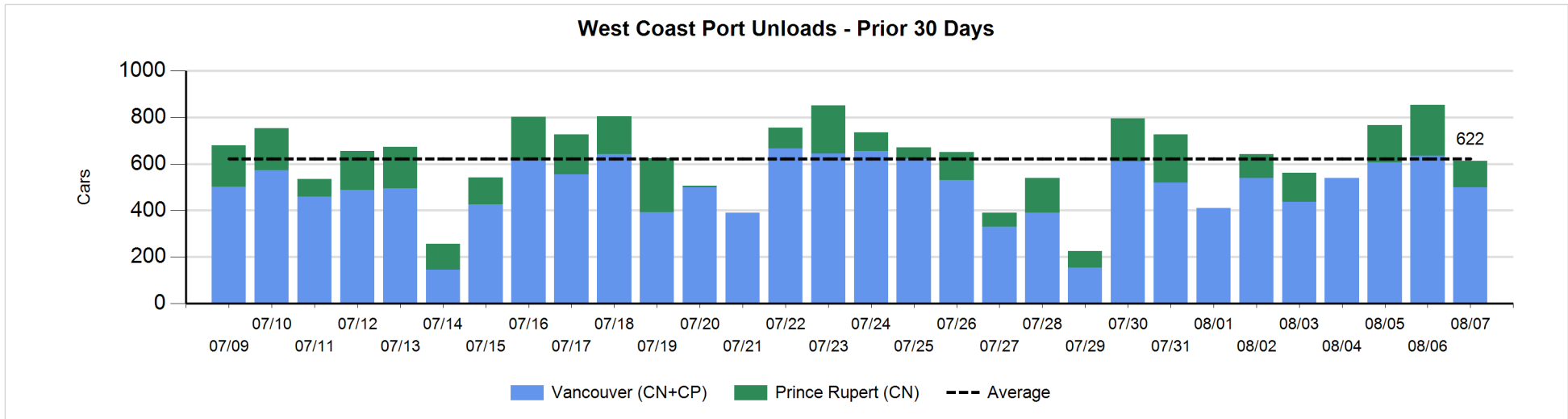
**Change in Loads Not Moving 48 Hours or More - 8/7/2018**

	E Canada	Prince Rupert	Thunder Bay	USA/MEX	Vancouver	Total
<b>CN</b>						
Origin	-26	66		0	-91	-51
Enroute	-5	-44	1	0	-146	-194
Destination	2	-1	95	1	14	111
	-29	21	96	1	-223	-134
<b>CP</b>						
Origin	0		0	-25	-83	-108
Enroute	0		-8	-14	-1	-23
Destination	0		-66	-1	-24	-91
	0		-74	-40	-108	-222
<b>US Rail / Short Line</b>						
Origin						
Enroute	2			-22		-20
Destination	0			-4	2	-2
	2			-26	2	-22



Port Unloads - 8/7/2018

	Prince Rupert	Vancouver	West Coast Total	Thunder Bay	Total
CN	114	312	426	173	599
CP		187	187	188	375
	114	499	613	361	974





**Port Terminal Status**

**Vancouver**

Daily Activity for 8/7/2018

	Cars Arrived	Cars Received in Interchange	Cars Delivered in Interchange	Cars Placed for Unloading	Loads on Wheels at Destination As of 8/7/2018
CN	477	122	212	612	803
CP	424	210	133	336	278
SRY	2	13		5	20

**Port Unloads**

	08/07	08/06	Week To Date	Last Week
CN	312	311	623	2,131
CP	187	324	511	1,530
SRY	14	2	16	24

**Age Profile of Loaded Cars Waiting Placement for Unloading**

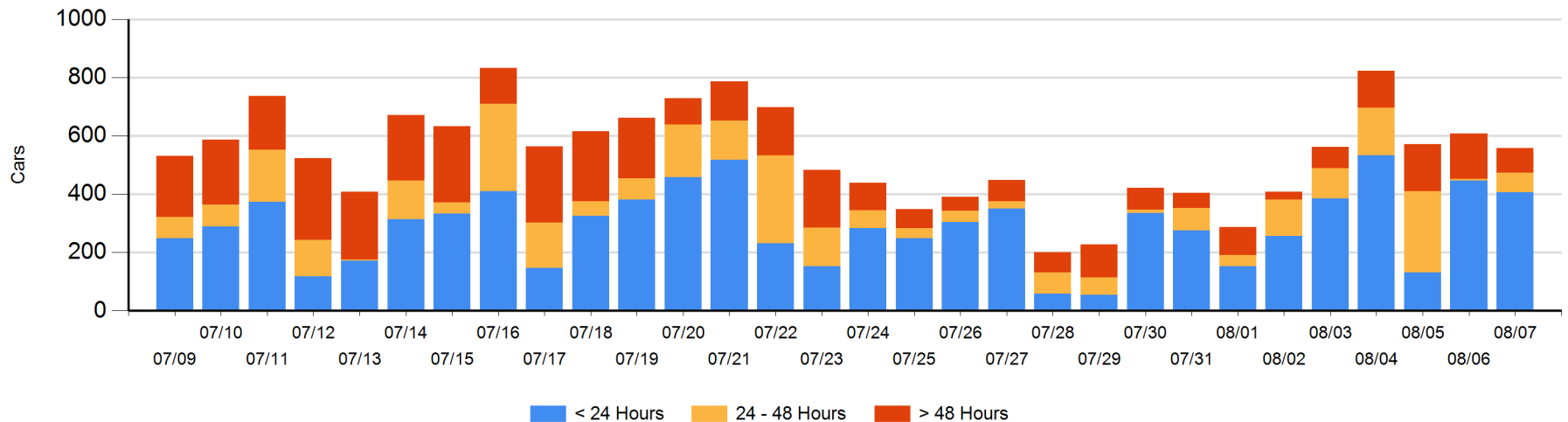
**Today**

	< 24 Hrs	24 - 48 Hrs	> 48-72 Hrs	> 72 Hrs	Total On Hand
CN	220	60		39	319
CP	187	6	3	44	240
SRY					0

**Change in Last 24 Hours**

	< 24 Hrs	24-48 Hrs	48 - 72 Hrs	> 72 Hrs
CN	-112	60		-42
CP	72	0	-59	31
SRY				

**Loaded Cars on Hand Vancouver Waiting for Placement - Last 30 Days All Railways**



**Port Terminal Status**

**Prince Rupert**

Daily Activity for 8/7/2018

	Cars Arrived	Cars Received in Interchange	Cars Delivered in Interchange	Cars Placed for Unloading	Loads on Wheels at Destination As of 8/7/2018
CN	201			201	98

**Port Unloads**

	08/07	08/06	Week To Date	Last Week
CN	114	217	331	779

**Age Profile of Loaded Cars Waiting Placement for Unloading**

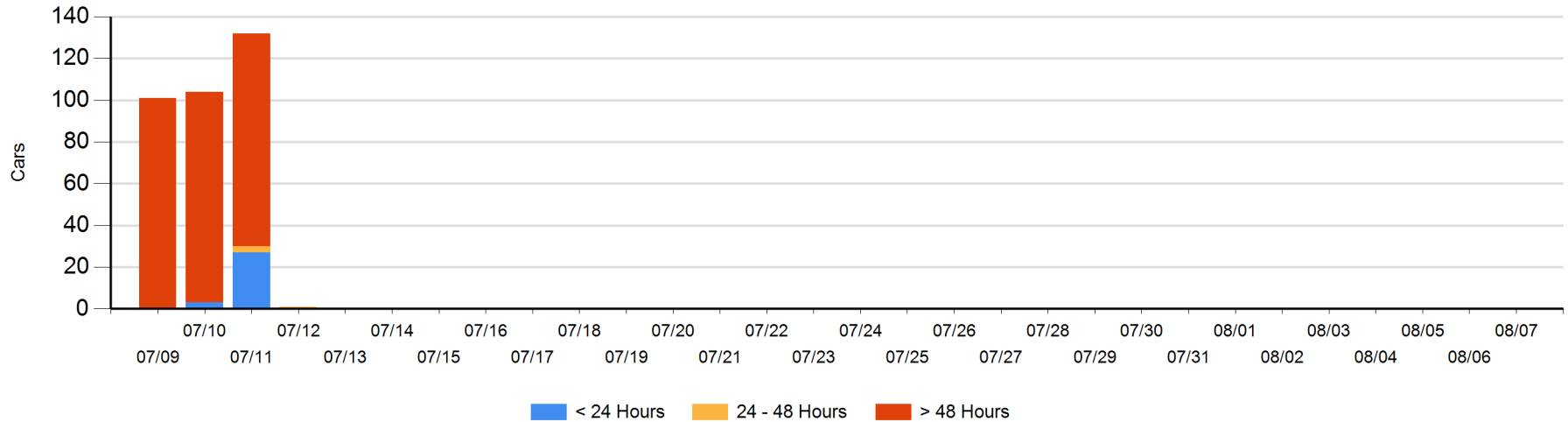
**Today**

	< 24 Hrs	24 - 48 Hrs	> 48-72 Hrs	> 72 Hrs	Total On Hand
CN					0

**Change in Last 24 Hours**

	< 24 Hrs	24-48 Hrs	48 - 72 Hrs	> 72 Hrs
CN				

Loaded Cars on Hand Prince Rupert Waiting for Placement - Last 30 Days All Railways



**Port Terminal Status**

**Thunder Bay**

Daily Activity for 8/7/2018

	Cars Arrived	Cars Received in Interchange	Cars Delivered in Interchange	Cars Placed for Unloading	Loads on Wheels at Destination As of 8/7/2018
CN	59				255
CP	66			84	550

**Port Unloads**

	08/07	08/06	Week To Date	Last Week
CN	173	91	264	375
CP	188	76	264	1,391

**Age Profile of Loaded Cars Waiting Placement for Unloading**

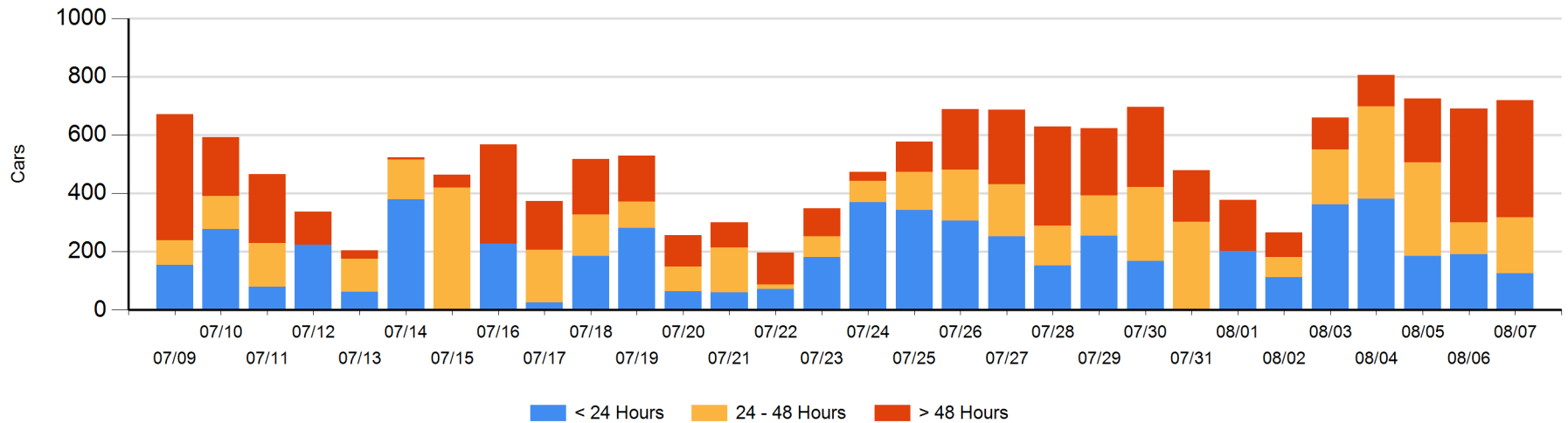
**Today**

	< 24 Hrs	24 - 48 Hrs	> 48-72 Hrs	> 72 Hrs	Total On Hand
CN	59	50	90	33	232
CP	66	142	18	262	488

**Change in Last 24 Hours**

	< 24 Hrs	24-48 Hrs	48 - 72 Hrs	> 72 Hrs
CN	9	-40	65	25
CP	-76	124	-129	52

**Loaded Cars on Hand Thunder Bay Waiting for Placement - Last 30 Days All Railways**



## Measurement Definitions

Loads on Wheels	<p>Count of loaded rail cars including all rail cars that have been released loaded at origin and have not been reported by the railway as unloaded at destination.</p> <p>Counts include all rail cars (hopper cars and boxcars) moving within a pipeline.</p>
Loads Not Moving	<p>Loaded rail cars for which the railways have not reported a movement event for 48 hours or more whether the rail car is at origin, enroute or at destination.</p>
Port Unloads	<p>Count of rail cars reported by railways as unloaded at the western port destinations of Vancouver, Prince Rupert and Thunder Bay.</p> <p>Unload counts include all rail cars (hopper cars and boxcars) unloaded by all receivers including major port terminals, transloaders and other receivers.</p>
Cars Arrived	<p>Count of rail cars reported as arrived at the destination railway terminal.</p>
Cars Received in Interchange	<p>Count of rail cars received in interchange by each railway within a destination railway terminal. Interchange activity is tracked for the Vancouver and Thunder Bay pipelines as applicable.</p>
Cars Delivered in Interchange	<p>Count of rail cars delivered in interchange by each railway within a destination railway terminal. Interchange activity is tracked for the Vancouver and Thunder Bay pipelines as applicable.</p>
Cars Placed for Unloading	<p>Count of rail cars reported by the railways as placed loaded at the receiver's facility for unloading.</p>
Loads on Wheels at Destination	<p>Count of rail cars that remain under load within the destination railway terminal including rail cars that have been reported as placed for unloading but not yet reported as unloaded.</p>
Waiting Placement for Unloading	<p>Count of rail cars that have been reported as arrived at the destination railway terminal but not reported as placed for unloading by the railway.</p> <p>For the Ports of Vancouver, Prince Rupert and Thunder Bay the count of rail cars waiting placement for unloading is categorized by age – i.e. the elapsed time from arrival at destination to the current report date.</p>