

**Note to Reader**

Alliance Grain Terminal in Vancouver has now begun planned maintenance which is expected to continue until mid-August.

**SPEED READ**

- Loads on wheels increased overnight, reflecting a decline in CN volumes offset by higher CP volumes. On a net basis, volumes increased due to higher volumes in the Vancouver corridor offset by lower volumes across the remaining corridors - USA/MEX, Thunder Bay, E Canada and Prince Rupert.
- Network fluidity worsen overnight, led by an increase in idle car counts on both CN and CP by 9% and 6%, respectively. The total count of cars for 4+ days on both railways decreased 38% overnight - now at 381 cars, the lowest seen in the last 30 days.
- Four days in Week 2 unloads now ahead of prior week's performance by more than 600 unloads, marking improved week over week performance at Vancouver and Prince Rupert offset by reduced unloads at Thunder Bay.

=====

**Loads on Wheels**

- Loads on wheels rose 2% (+192) overnight due to lower volumes on CN offset by higher volumes on CP - combined total at 8,415 and 2% above the trailing 30-day average.
- On a net basis, the rise in loads on wheels indicates higher traffic in the Vancouver corridor offset by reduced traffic across the remaining corridors - USA/MEX, Thunder Bay, E Canada and Prince Rupert.
- CN volumes declined slightly by 1% (-31) overnight with reduced traffic levels across all corridors other than Vancouver. System wide CN loads on wheels now at 4,594 and 8% above the trailing 30-day average.
- CP volumes rose 9% (+281) overnight and have now increased for the third consecutive day, driven by an increase in volumes across all corridors other than E Canada. CP system wide loads on wheels now at 3,491 and 7% below the trailing 30-day average.
- Vancouver now at 4,798, up 6% (+263) overnight and 11% above the trailing 30-day average.
- The Prince Rupert pipeline now at 1,358, decreased marginally by 1% (-9) overnight and 30% above the trailing 30-day average.
- Thunder Bay volumes declined for nine consecutive days, down 2% (-22) overnight - now at 931, the lowest seen in the last 30 days, and 43% below the trailing 30-day average with 60% of traffic moving on CP.

**Hopper Car Rationing**

- No hopper car rationing was reported for either CN or CP in week 1 and none expected in week 2.

**Loads Not Moving**

- **The count of cars not moving for 48+ hours increased 7% (+92) overnight, marking higher counts on both railways. Idle car counts now at 1,350 and 25% below the trailing 30 day-average.**
- CN
  - **The count of idle cars gained 9% (+58) overnight - idle car counts now at 734.**
  - The number of cars idle for 4+ days fell 9% (-18) overnight and have now decreased for the sixth consecutive day - currently at 193 cars.
  - The count of cars not moving for 7+ days decreased for five consecutive days, down significantly by 65% (-53) overnight – presently at 28 cars.
  - Vancouver represents 34% of all idle cars.
  - In total 73% of all idle cars are dwelling at origin locations.

- CP
  - **CP counts increased 6% (+34) overnight - idle car counts now at 616.**
  - The number of cars idle for 4+ days declined significantly by 53% (-216) overnight - presently at 188 cars, the lowest seen in the last 30 days.
  - The number of cars idle for 7+ days fell 23% (-33) overnight - now at 111 cars.
  - Vancouver accounts for 72% of all idle cars.
  - In total 62% of all idle cars are dwelling at origin locations.

### **Port Performance**

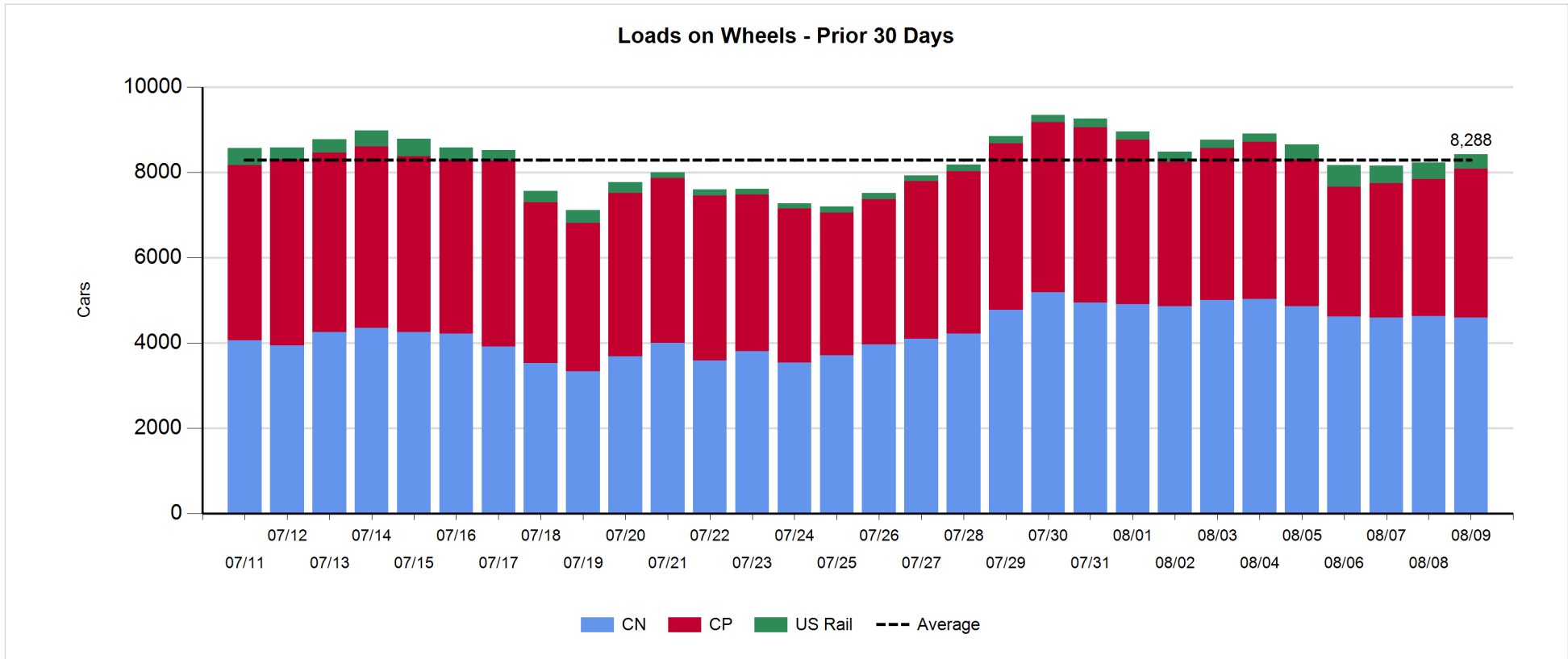
- CN and CP reported a total of 1,193 cars unloaded at the three major ports, now 38% above the trailing 30-day average. Four days in Week 2 unloads are tracking ahead of last week's pace by more than 600 unloads, marking higher unloads at Vancouver and Prince Rupert offset by reduced unloads at Thunder Bay.
- Vancouver
  - 682 unloads reported by CN and CP at the Port of Vancouver; CN - 430 and CP - 252. Four days in Week 2 unloads are tracking ahead of last week's performance by nearly 600 unloads.
  - There are more than 800 cars on site at Vancouver with less than 400 cars arriving at the port in the last 24 hours.
  - CN and CP have fewer than 650 cars in British Columbia en route to Vancouver, with about 200 Kamloops and west and 51% of traffic currently moving on CP
- Prince Rupert
  - Prince Rupert reported 161 unloads, now ahead of last week's unloads after four days by around 100 unloads.
  - Loads on wheels now above 1,000 cars.
  - There are nearly 300 cars west of Jasper - predominantly Prince George and west.
  - There are about 10 cars on site at Prince Rupert with about 150 cars arriving at the port in the last 24 hours. Given the structure of the pipeline, there is a chance unloads might be challenged in the next few days.
- Thunder Bay
  - 350 unloads reported at Thunder Bay yesterday. Four days in Week 2 unloads are tracking behind last week's pace by more than 50 unloads.
  - There are about 350 cars on site at Thunder Bay with nearly 100 cars arriving at the port in the prior 24 hours.
  - There are more than 150 cars en route to Thunder Bay from Winnipeg and east. Cars on hand and those en route should support unloads for the next day or two.

**Daily Loads on Wheels - 8/9/2018**

	E Canada	Prince Rupert	Thunder Bay	USA/MEX	Vancouver	Total
CN	338	1,358	373	299	2,226	4,594
CP	14		558	358	2,561	3,491
Short Line	13				11	24
US Rail				306		306
	365	1,358	931	963	4,798	8,415

**Change in Loads on Wheels - Prior 24 Hours**

	E Canada	Prince Rupert	Thunder Bay	USA/MEX	Vancouver	Total
CN	-2	-9	-112	-20	112	-31
CP	-5		90	46	150	281
Short Line	-3				1	-2
US Rail				-56		-56
	-10	-9	-22	-30	263	192

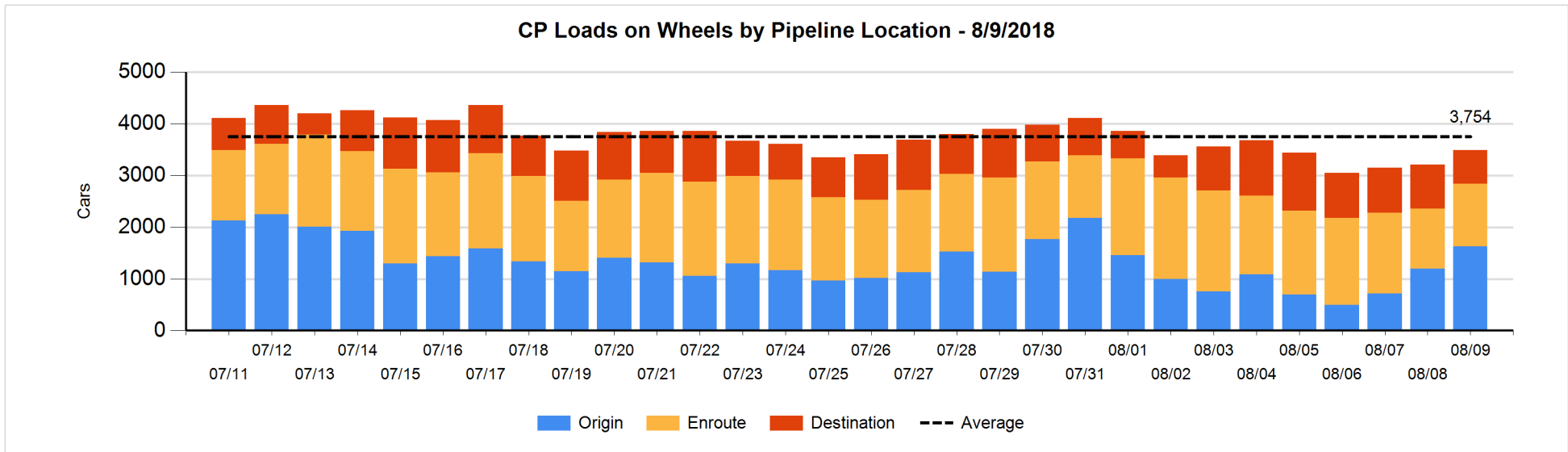
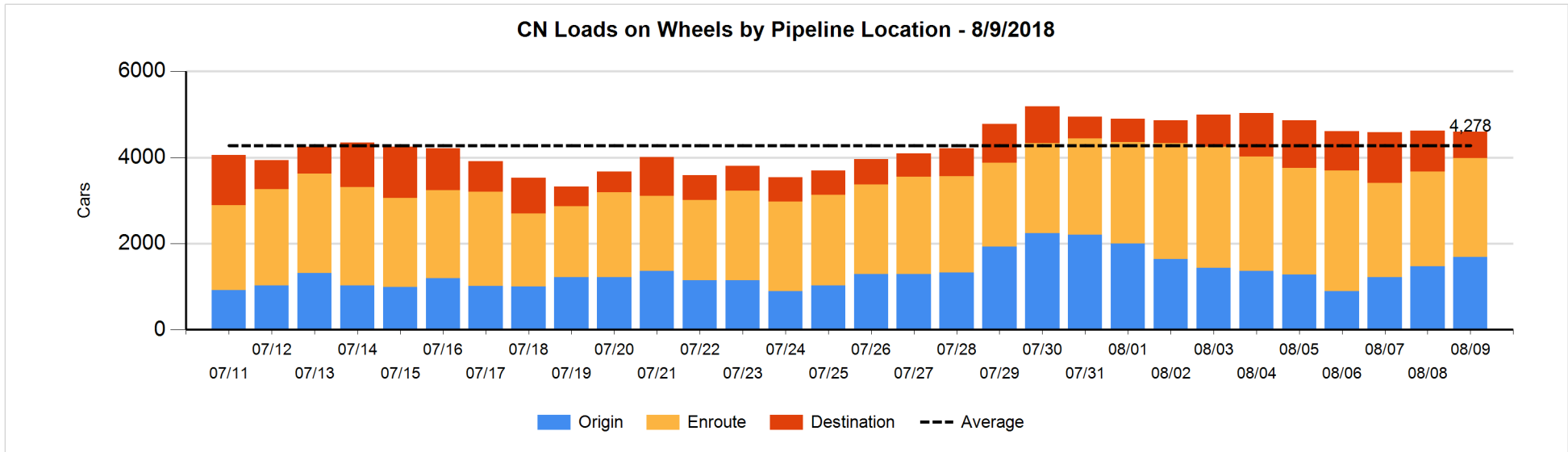


**Daily Loads on Wheels By Pipeline Location - 8/9/2018**

	E Canada	Prince Rupert	Thunder Bay	USA/MEX	Vancouver	Total
CN						
Origin	85	631	28	59	886	1,689
Enroute	228	721	202	221	928	2,300
Destination	25	6	143	19	412	605
	338	1,358	373	299	2,226	4,594
CP						
Origin	4		335	212	1,079	1,630
Enroute	9		30	96	1,076	1,211
Destination	1		193	50	406	650
	14		558	358	2,561	3,491
US Rail / Short Line						
Origin						
Enroute	9			240		249
Destination	4			66	11	81
	13			306	11	330

**Change in Daily Loads on Wheels By Pipeline Location - Prior 24 Hours**

	E Canada	Prince Rupert	Thunder Bay	USA/MEX	Vancouver	Total
CN						
Origin	-22	18	-143	-29	391	215
Enroute	6	-14	106	7	-8	97
Destination	13	-13	-75	2	-271	-344
	-3	-9	-112	-20	112	-32
CP						
Origin	1		306	28	100	435
Enroute	-6		-13	-30	93	44
Destination	0		-203	48	-43	-198
	-5		90	46	150	281
US Rail / Short Line						
Origin						
Enroute	0			-56		-56
Destination	-3			0	1	-2
	-3			-56	1	-58

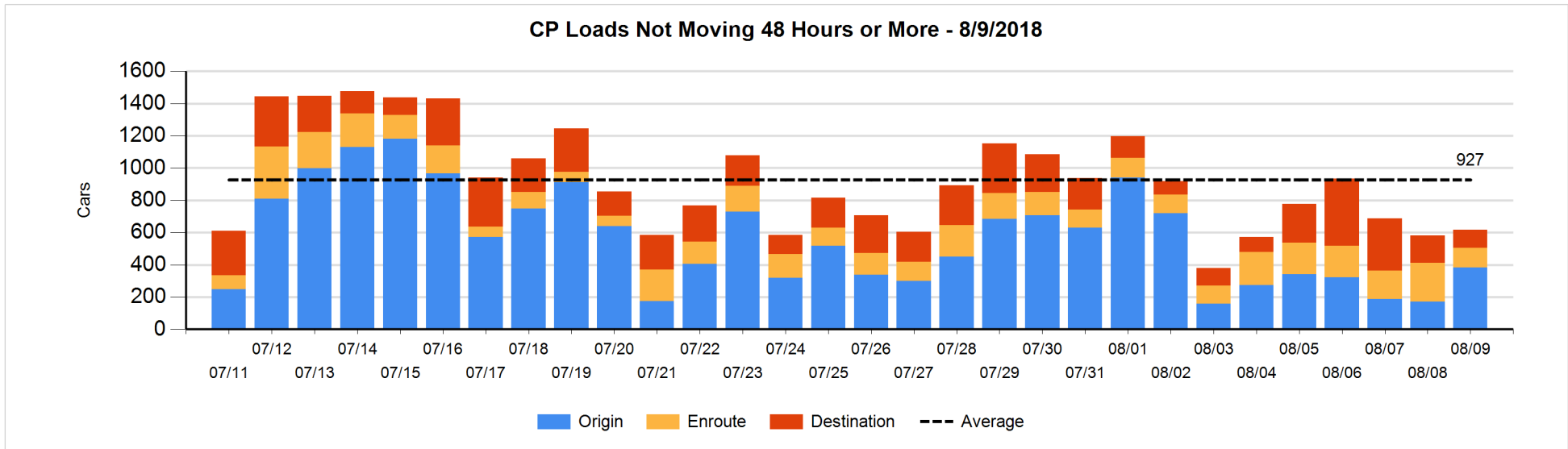
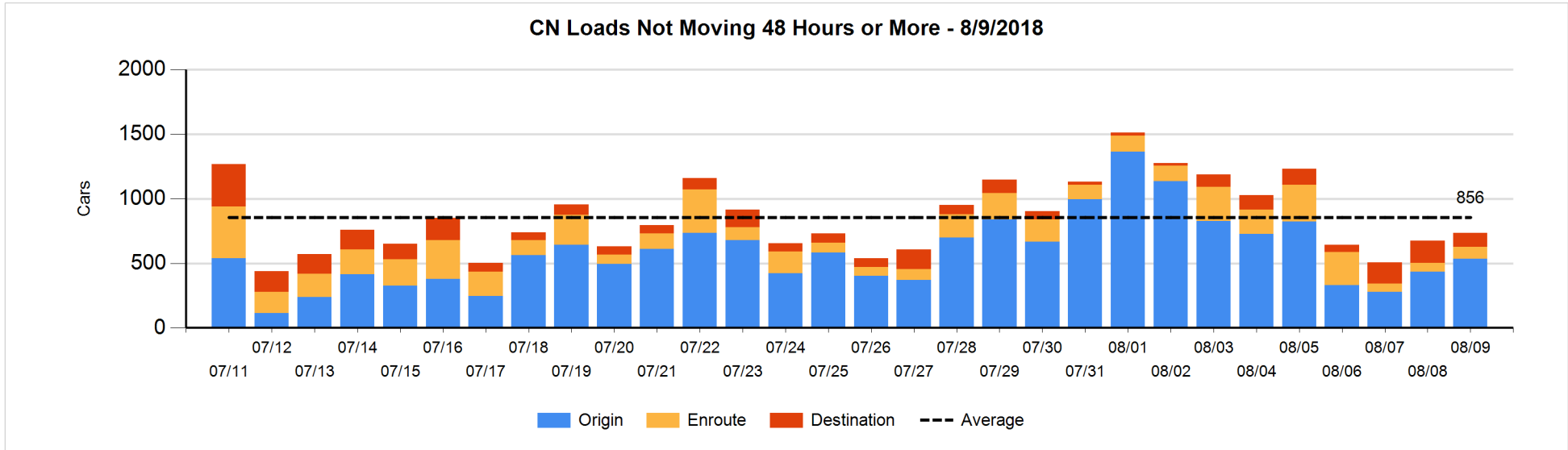


**Loads Not Moving 48 Hours or More - 8/9/2018**

	E Canada	Prince Rupert	Thunder Bay	USA/MEX	Vancouver	Total
CN						
Origin	76	201	28	34	197	536
Enroute	4	7	4	46	30	91
Destination			74	12	21	107
	80	208	106	92	248	734
CP						
Origin	3		29	49	301	382
Enroute			12	16	94	122
Destination	1		60	2	49	112
	4		101	67	444	616
US Rail / Short Line						
Origin						
Enroute	5			24		29
Destination	1			23		24
	6			47		53

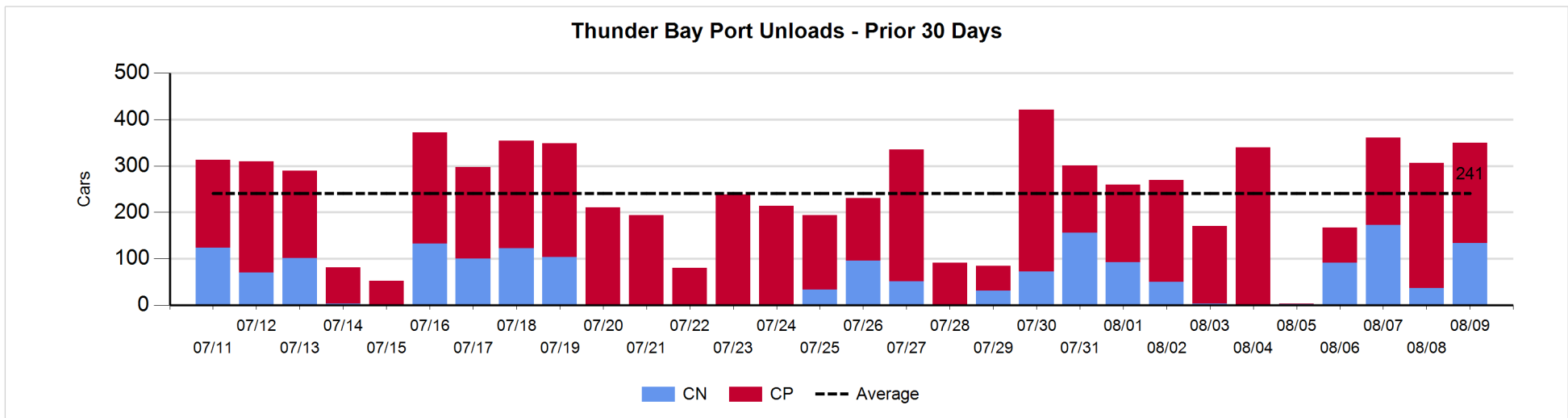
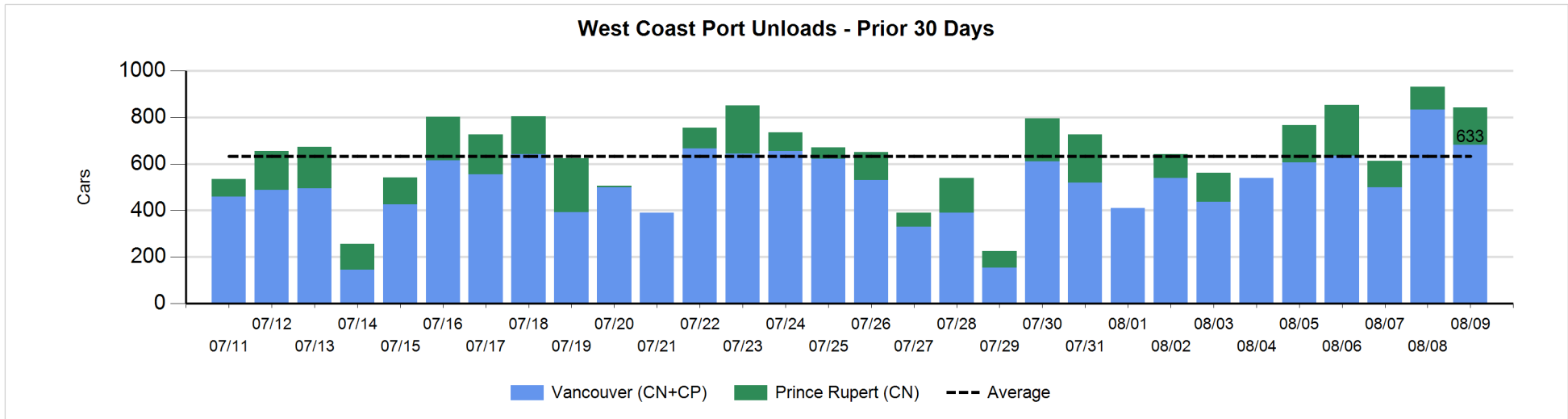
**Change in Loads Not Moving 48 Hours or More - 8/9/2018**

	E Canada	Prince Rupert	Thunder Bay	USA/MEX	Vancouver	Total
CN						
Origin	76	50	-40	0	14	100
Enroute	2	-14	2	33	0	23
Destination			-51	9	-23	-65
	78	36	-89	42	-9	58
CP						
Origin	0		0	47	165	212
Enroute	-1		0	-48	-71	-120
Destination	0		-98	0	40	-58
	-1		-98	-1	134	34
US Rail / Short Line						
Origin						
Enroute	1			-16		-15
Destination	0			1	-1	0
	1			-15	-1	-15



Port Unloads - 8/9/2018

	Prince Rupert	Vancouver	West Coast Total	Thunder Bay	Total
CN	161	430	591	134	725
CP		252	252	216	468
	161	682	843	350	1,193





**Port Terminal Status**

**Vancouver**

Daily Activity for 8/9/2018

	Cars Arrived	Cars Received in Interchange	Cars Delivered in Interchange	Cars Placed for Unloading	Loads on Wheels at Destination As of 8/9/2018
CN	131	123	77	399	412
CP	248	77	127	152	406
SRY		4		9	11

**Port Unloads**

	08/09	08/08	Week To Date	Last Week
CN	430	541	1,594	2,131
CP	252	291	1,054	1,530
SRY	12	13	41	24

**Age Profile of Loaded Cars Waiting Placement for Unloading**

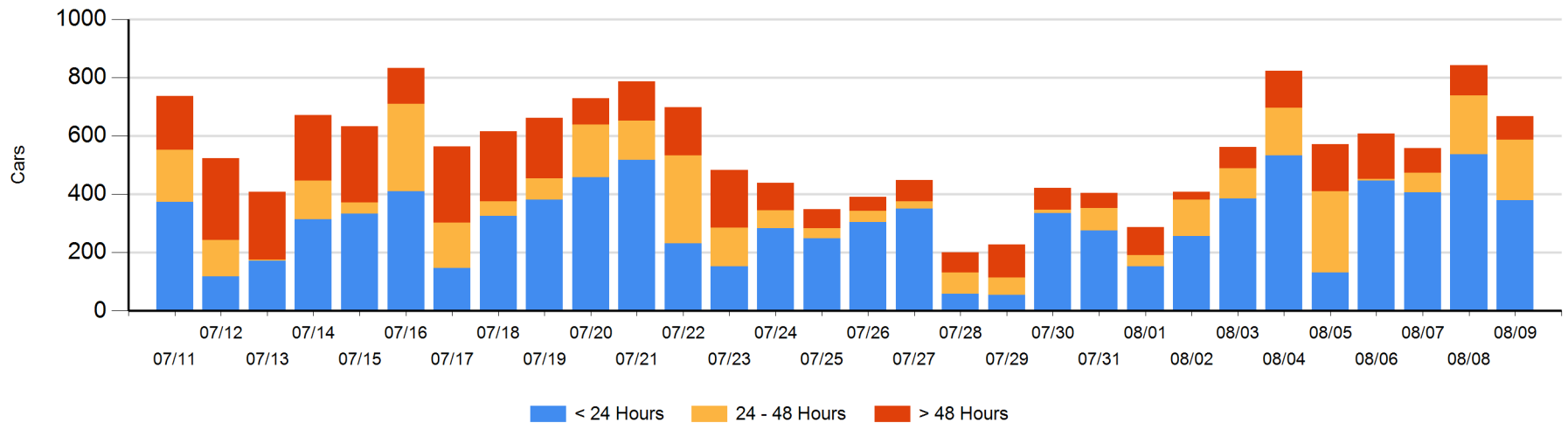
**Today**

	< 24 Hrs	24 - 48 Hrs	> 48-72 Hrs	> 72 Hrs	Total On Hand
CN	131	169	53	8	361
CP	248	38	8	13	307
SRY					0

**Change in Last 24 Hours**

	< 24 Hrs	24-48 Hrs	48 - 72 Hrs	> 72 Hrs
CN	-153	17	22	-21
CP	-4	-12	2	-26
SRY				

**Loaded Cars on Hand Vancouver Waiting for Placement - Last 30 Days All Railways**



**Port Terminal Status**

**Prince Rupert**

**Daily Activity for 8/9/2018**

	Cars Arrived	Cars Received in Interchange	Cars Delivered in Interchange	Cars Placed for Unloading	Loads on Wheels at Destination As of 8/9/2018
CN	148			148	6

**Port Unloads**

	08/09	08/08	Week To Date	Last Week
CN	161	98	590	779

**Age Profile of Loaded Cars Waiting Placement for Unloading**

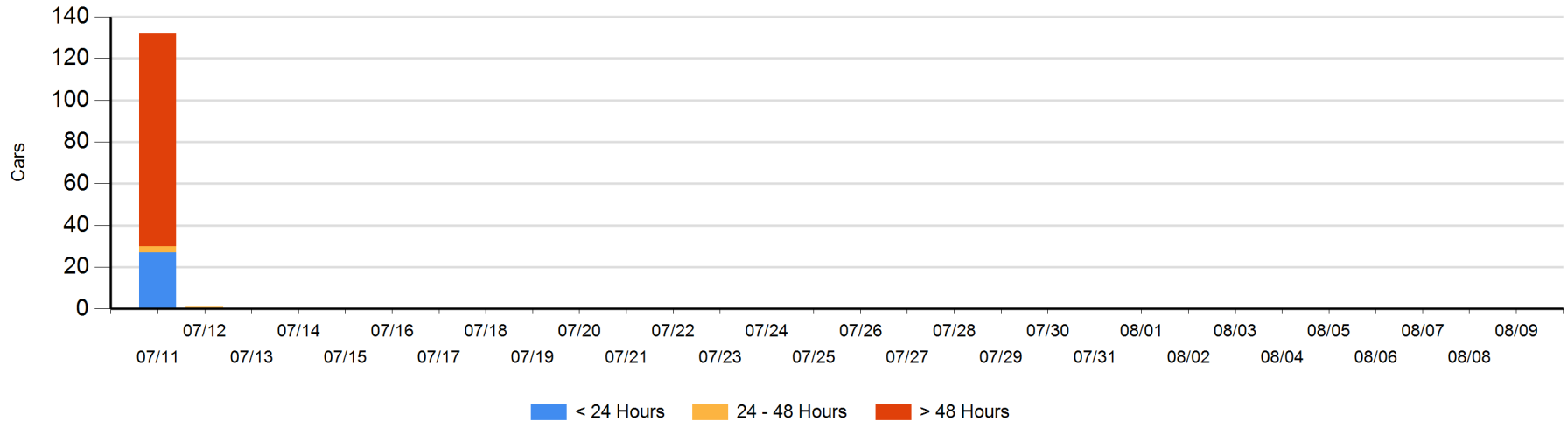
**Today**

	< 24 Hrs	24 - 48 Hrs	> 48-72 Hrs	> 72 Hrs	Total On Hand
CN					0

**Change in Last 24 Hours**

	< 24 Hrs	24-48 Hrs	48 - 72 Hrs	> 72 Hrs
CN				

**Loaded Cars on Hand Prince Rupert Waiting for Placement - Last 30 Days All Railways**



**Port Terminal Status**

**Thunder Bay**

Daily Activity for 8/9/2018

	Cars Arrived	Cars Received in Interchange	Cars Delivered in Interchange	Cars Placed for Unloading	Loads on Wheels at Destination As of 8/9/2018
CN	59			102	143
CP	13			88	193

**Port Unloads**

	08/09	08/08	Week To Date	Last Week
CN	134	37	435	375
CP	216	269	749	1,391

**Age Profile of Loaded Cars Waiting Placement for Unloading**

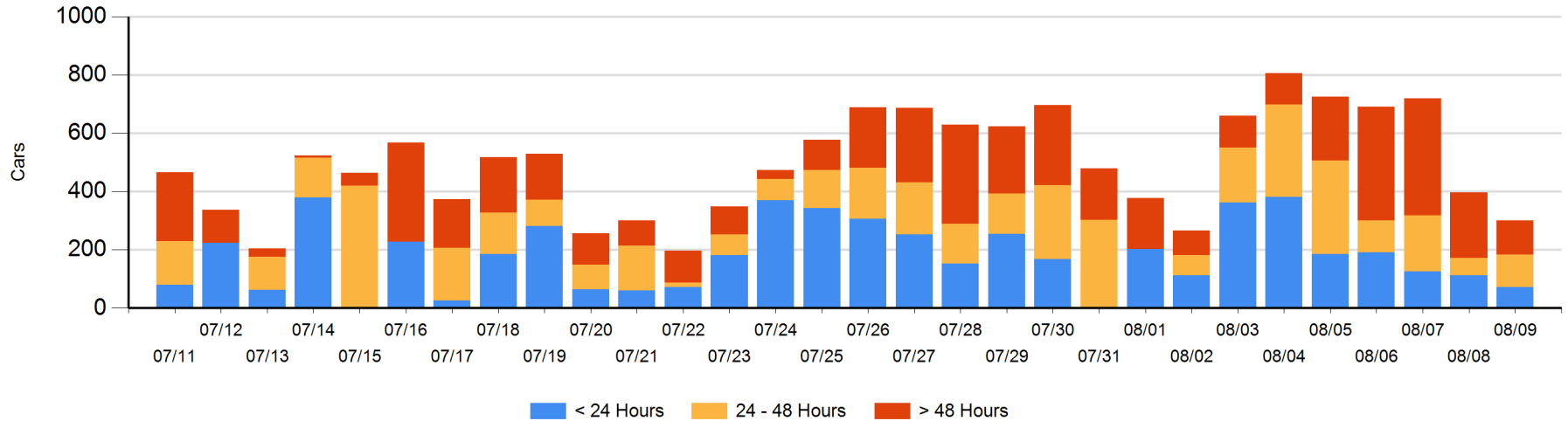
**Today**

	< 24 Hrs	24 - 48 Hrs	> 48-72 Hrs	> 72 Hrs	Total On Hand
CN	59			71	130
CP	13	112	1	45	171

**Change in Last 24 Hours**

	< 24 Hrs	24-48 Hrs	48 - 72 Hrs	> 72 Hrs
CN	59	-59	-28	-5
CP	-99	111	-33	-42

Loaded Cars on Hand Thunder Bay Waiting for Placement - Last 30 Days All Railways



## Measurement Definitions

Loads on Wheels	<p>Count of loaded rail cars including all rail cars that have been released loaded at origin and have not been reported by the railway as unloaded at destination.</p> <p>Counts include all rail cars (hopper cars and boxcars) moving within a pipeline.</p>
Loads Not Moving	<p>Loaded rail cars for which the railways have not reported a movement event for 48 hours or more whether the rail car is at origin, enroute or at destination.</p>
Port Unloads	<p>Count of rail cars reported by railways as unloaded at the western port destinations of Vancouver, Prince Rupert and Thunder Bay.</p> <p>Unload counts include all rail cars (hopper cars and boxcars) unloaded by all receivers including major port terminals, transloaders and other receivers.</p>
Cars Arrived	<p>Count of rail cars reported as arrived at the destination railway terminal.</p>
Cars Received in Interchange	<p>Count of rail cars received in interchange by each railway within a destination railway terminal. Interchange activity is tracked for the Vancouver and Thunder Bay pipelines as applicable.</p>
Cars Delivered in Interchange	<p>Count of rail cars delivered in interchange by each railway within a destination railway terminal. Interchange activity is tracked for the Vancouver and Thunder Bay pipelines as applicable.</p>
Cars Placed for Unloading	<p>Count of rail cars reported by the railways as placed loaded at the receiver's facility for unloading.</p>
Loads on Wheels at Destination	<p>Count of rail cars that remain under load within the destination railway terminal including rail cars that have been reported as placed for unloading but not yet reported as unloaded.</p>
Waiting Placement for Unloading	<p>Count of rail cars that have been reported as arrived at the destination railway terminal but not reported as placed for unloading by the railway.</p> <p>For the Ports of Vancouver, Prince Rupert and Thunder Bay the count of rail cars waiting placement for unloading is categorized by age – i.e. the elapsed time from arrival at destination to the current report date.</p>