

Note to Reader

Alliance Grain Terminal in Vancouver has now begun planned maintenance which is expected to continue until mid-August.

SPEED READ

- Loads on wheels decreased overnight, indicating a decline in both CN and CP volumes. On a net basis, volumes decreased due to reduced traffic across all corridors.
- Network fluidity deteriorated overnight, led by an increase in idle car counts on both CN and CP by 24% and 22%, respectively. The total count of cars for 4+ days on both railways increased 17% overnight - presently at 726 cars.
- Week 2 unloads concluded ahead of prior week's performance by fewer than 450 unloads, indicating an improvement in week over week performance at Vancouver and Prince Rupert offset by reduced unloads at Thunder Bay.

=====

Loads on Wheels

- Loads on wheels declined 9% (-783) overnight due to lower volumes on both CN and CP - combined total at 8,134 and 2% below the trailing 30-day average.
- On a net basis, the decline in loads on wheels reflects lower traffic levels across all corridors.
- CN volumes fell 7% (-305) overnight with reduced volumes across all corridors. System wide CN loads on wheels presently at 4,374 and 1% above the trailing 30-day average.
- CP volumes declined significantly by 13% (-499) overnight driven by a decline in traffic in the Vancouver and E Canada corridors offset by an increase in volumes in the USA/MEX corridor. CP system wide loads on wheels currently at 3,425 and 8% below the trailing 30-day average.
- Vancouver currently at 3,889, declined for the third consecutive day, down significantly by 13% (-574) overnight, and 10% below the trailing 30-day average.
- The Prince Rupert pipeline presently at 1,505, fell 7% (-118) overnight and 38% above the trailing 30-day average.
- Thunder Bay volumes decreased 3% (-54) overnight - now at 1,489 and 7% below the trailing 30-day average with 68% of traffic moving on CP.

Hopper Car Rationing

- No hopper car rationing was reported for either CN or CP in week 2 and none expected in week 3.

Loads Not Moving

- **The count of cars not moving for 48+ hours increased 23% (+373) overnight, reflecting higher counts on both CN and CP. Idle car counts currently at 1,989 and 14% above the trailing 30-day average.**
- CN
 - **The count of idle cars rose 24% (+174) overnight - idle car counts currently at 899.**
 - The number of cars idle for 4+ days gained 22% (+71) overnight - currently at 393 cars.
 - The count of cars not moving for 7+ days decreased 2% (-2) overnight - currently at 81 cars.
 - Vancouver represents 29% of all idle cars.
 - In total 70% of all idle cars are dwelling at origin locations.
- CP

- **CP counts increased significantly by 22% (+199) overnight - idle car counts currently at 1,090.**
- The number of cars idle for 4+ days increased 13% (+37) overnight - presently at 333 cars.
- The number of cars idle for 7+ days increased 9% (+11) overnight - currently at 133 cars.
- Vancouver accounts for 65% of all idle cars.
- In total 63% of all idle cars are dwelling at origin locations.

Port Performance

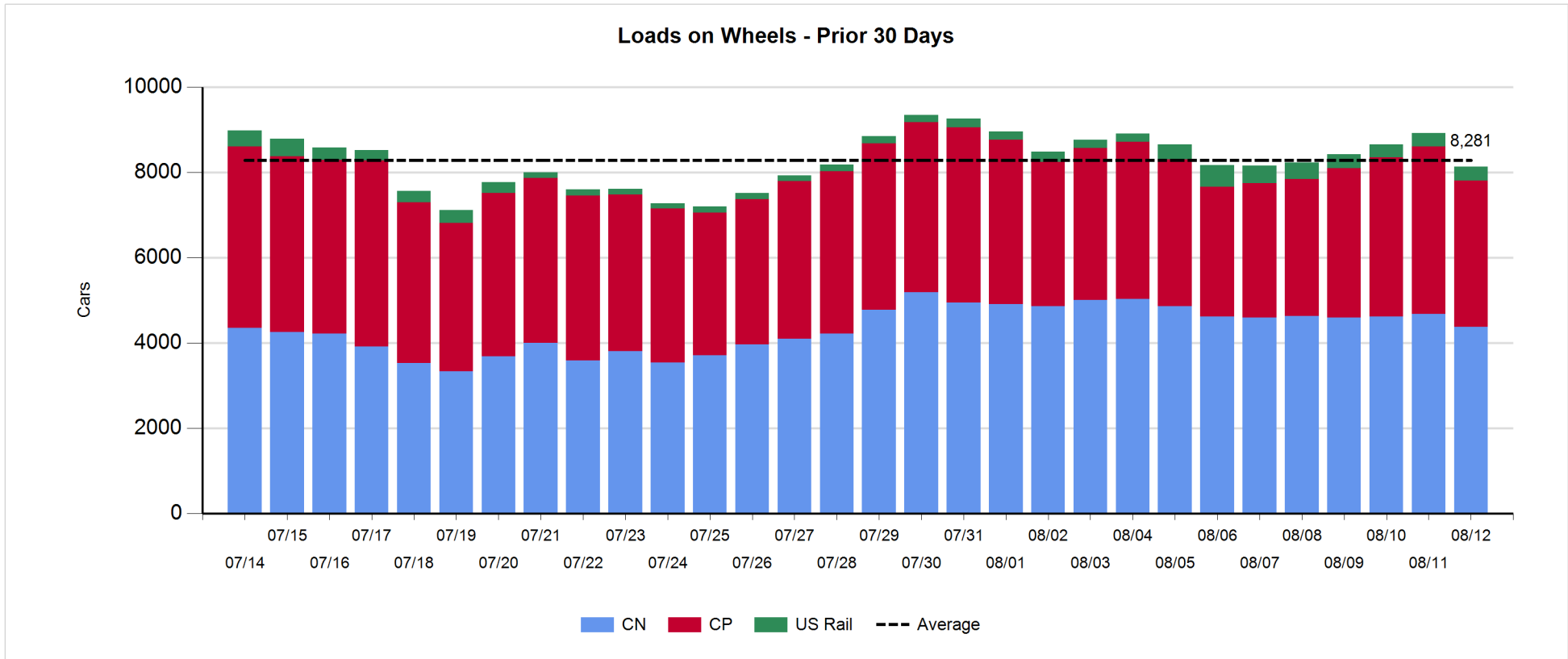
- CN and CP reported a total of 955 cars unloaded at the three major ports, now 12% above the trailing 30-day average. Week 2 unloads finished ahead of last week's pace by nearly 450 unloads, indicating higher unloads at Vancouver and Prince Rupert offset by lower unloads at Thunder Bay.
- Vancouver
 - 669 unloads reported by CN and CP at the Port of Vancouver; CN - 299 and CP - 370. Week 2 unloads concluded ahead of last week's performance by less than 600 unloads.
 - There are about 1,350 cars on site at Vancouver with more than 700 cars arriving at the port in the last 24 hours.
 - CN and CP have nearly 450 cars in British Columbia en route to Vancouver, with about 200 Kamloops and west and 63% of traffic currently moving on CP.
- Prince Rupert
 - Prince Rupert reported 216 unloads, ended ahead of last week's unloads by around 150 unloads.
 - Loads on wheels now above 1,000 cars.
 - There are 600 cars west of Jasper - predominantly Prince George and west.
 - There are currently 10 cars on site at Prince Rupert. Given the structure of the pipeline, there appears to be sufficient cars available to support unloads in the early part of week 3.
- Thunder Bay
 - 70 unloads reported at Thunder Bay yesterday. Week 2 unloads finished behind last week's pace by more than 300 unloads.
 - There are more than 200 cars on site at Thunder Bay with zero cars arriving at the port in the prior 24 hours.
 - There are 650 cars en route to Thunder Bay from Winnipeg and east. Cars on hand and those en route should support unloads in the early part of week 3.

Daily Loads on Wheels - 8/12/2018

	E Canada	Prince Rupert	Thunder Bay	USA/MEX	Vancouver	Total
CN	355	1,505	478	243	1,793	4,374
CP	10		1,011	325	2,079	3,425
Short Line	22				17	39
US Rail				296		296
	387	1,505	1,489	864	3,889	8,134

Change in Loads on Wheels - Prior 24 Hours

	E Canada	Prince Rupert	Thunder Bay	USA/MEX	Vancouver	Total
CN	-35	-118	-54	-17	-81	-305
CP	-2		0	4	-501	-499
Short Line	17				8	25
US Rail				-4		-4
	-20	-118	-54	-17	-574	-783

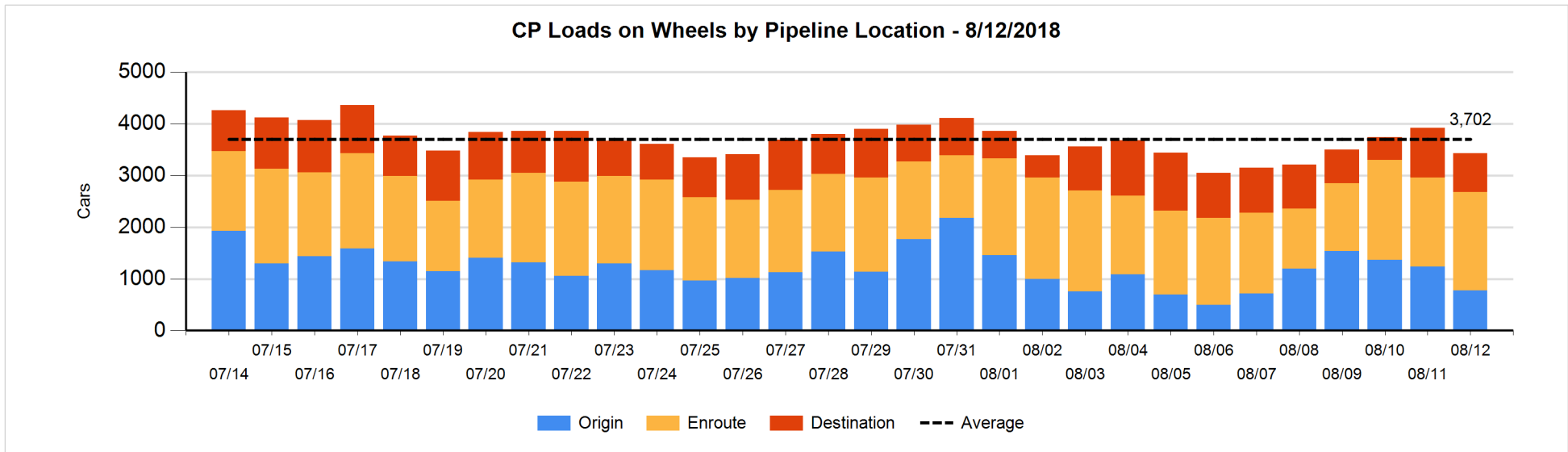
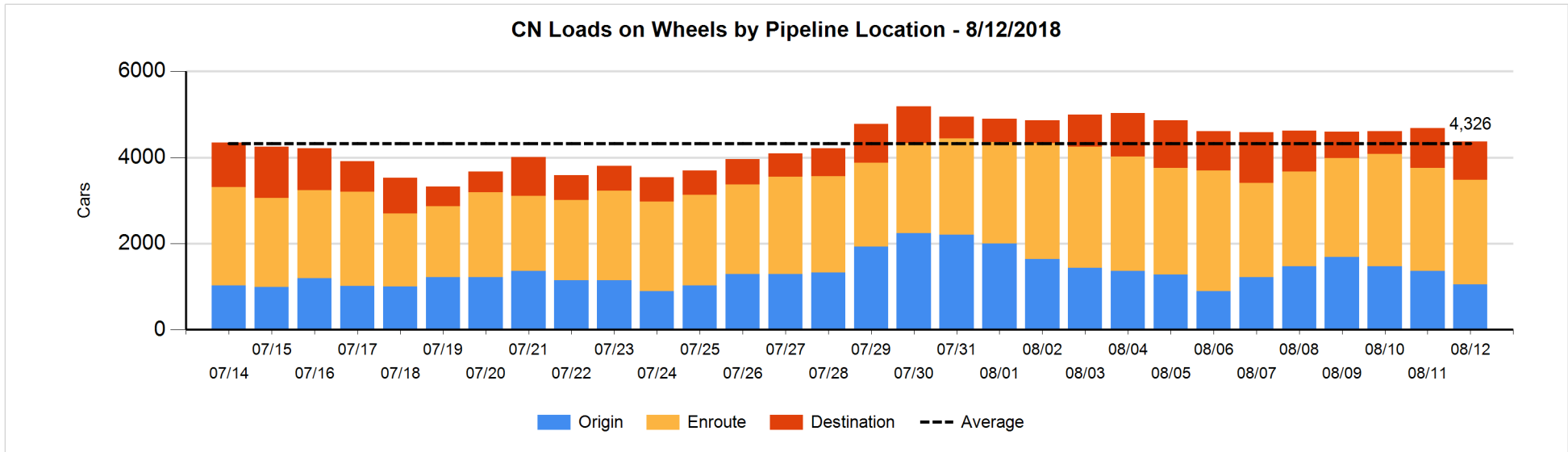


Daily Loads on Wheels By Pipeline Location - 8/12/2018

	E Canada	Prince Rupert	Thunder Bay	USA/MEX	Vancouver	Total
CN						
Origin	144	466	97	49	296	1,052
Enroute	172	1,030	244	182	804	2,432
Destination	39	9	137	12	693	890
	355	1,505	478	243	1,793	4,374
CP						
Origin	4		2	60	711	777
Enroute	4		922	238	734	1,898
Destination	2		87	27	634	750
	10		1,011	325	2,079	3,425
US Rail / Short Line						
Origin						
Enroute	4			207		211
Destination	18			89	17	124
	22			296	17	335

Change in Daily Loads on Wheels By Pipeline Location - Prior 24 Hours

	E Canada	Prince Rupert	Thunder Bay	USA/MEX	Vancouver	Total
CN						
Origin	-3	-30	-147	4	-136	-312
Enroute	-41	128	163	-19	-189	42
Destination	9	-216	-70	-2	244	-35
	-35	-118	-54	-17	-81	-305
CP						
Origin	0		-223	-1	-238	-462
Enroute	-2		223	20	-67	174
Destination	0		0	-15	-196	-211
	-2		0	4	-501	-499
US Rail / Short Line						
Origin						
Enroute	0			-4		-4
Destination	17			0	8	25
	17			-4	8	21

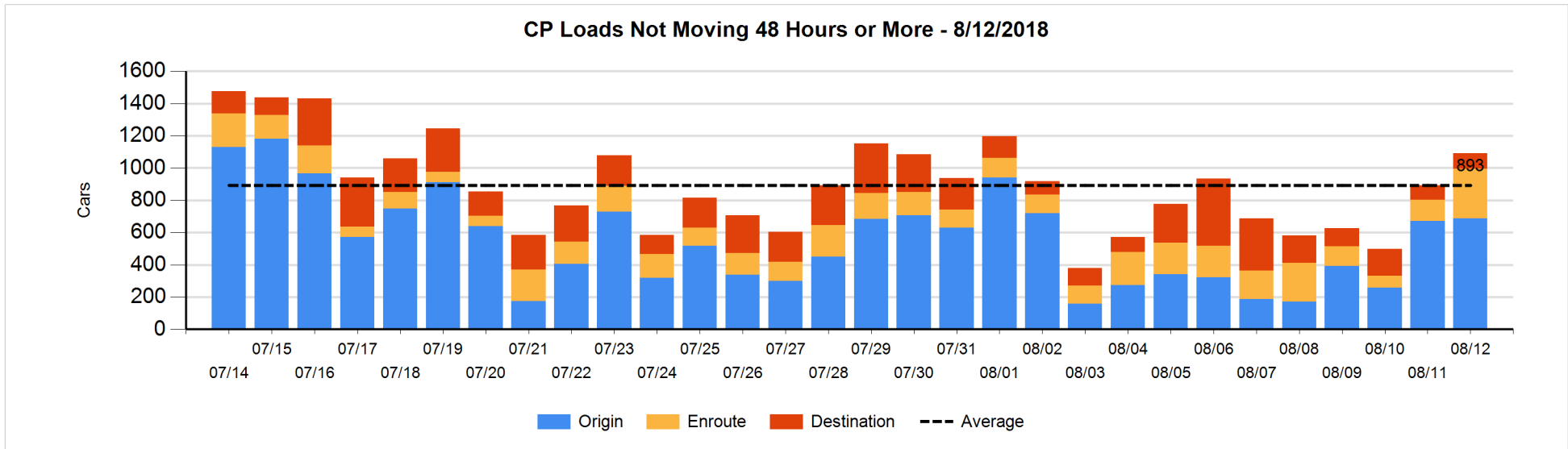
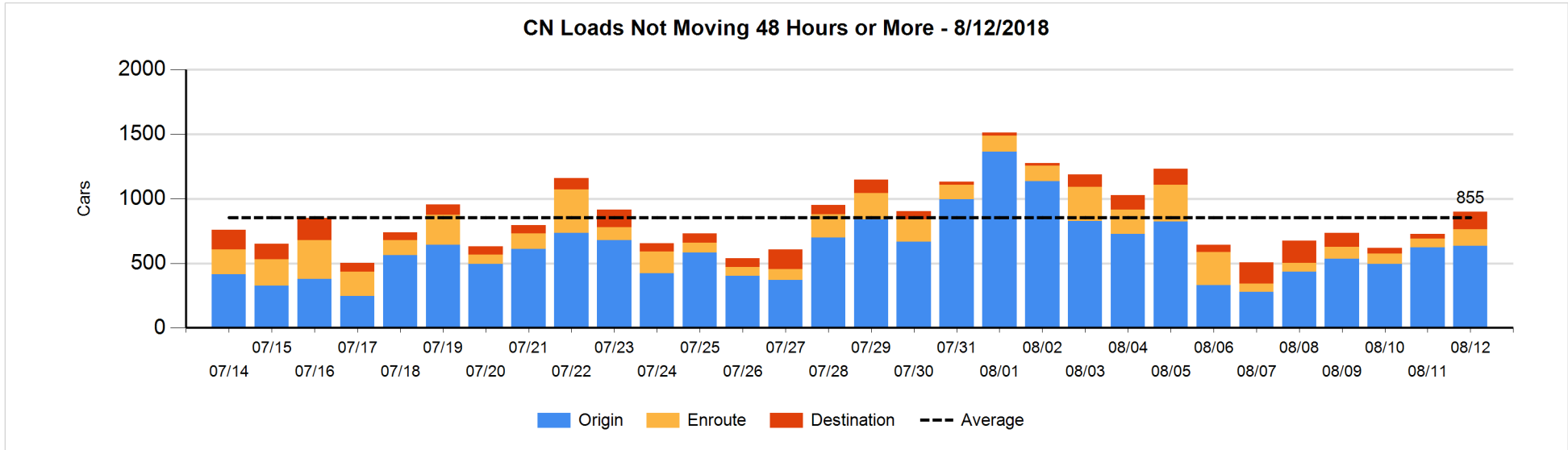


Loads Not Moving 48 Hours or More - 8/12/2018

	E Canada	Prince Rupert	Thunder Bay	USA/MEX	Vancouver	Total
CN						
Origin	109	229	48	45	202	633
Enroute	4	68		43	14	129
Destination	5		79	6	47	137
	118	297	127	94	263	899
CP						
Origin	4		2	60	621	687
Enroute	2		222	20	65	309
Destination			73	2	19	94
	6		297	82	705	1090
US Rail / Short Line						
Origin						
Enroute	4			58		62
Destination	1			85	5	91
	5			143	5	153

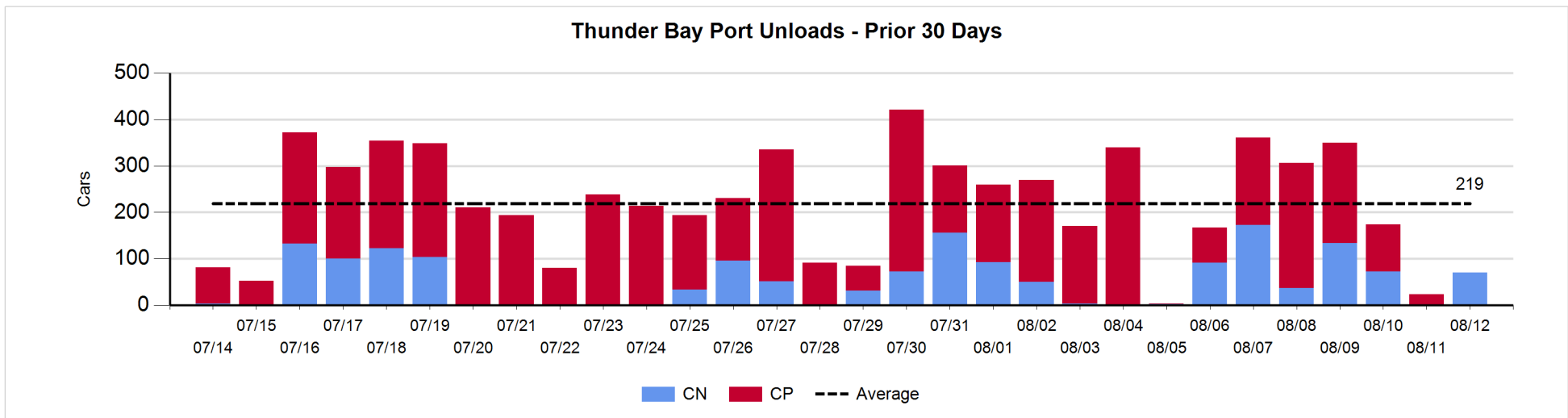
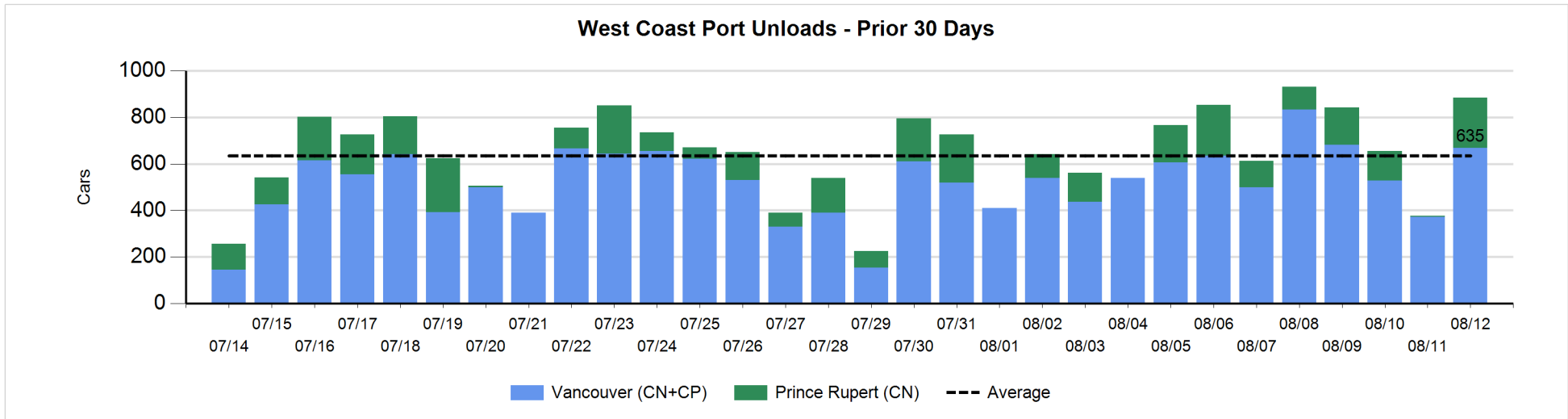
Change in Loads Not Moving 48 Hours or More - 8/12/2018

	E Canada	Prince Rupert	Thunder Bay	USA/MEX	Vancouver	Total
CN						
Origin	53	21	37	5	-105	11
Enroute	2	59		23	-23	61
Destination	2		77	-3	26	102
	57	80	114	25	-102	174
CP						
Origin	0		-110	1	125	16
Enroute	0		210	12	-45	177
Destination			5	-8	9	6
	0		105	5	89	199
US Rail / Short Line						
Origin						
Enroute	0			7		7
Destination	0			50	4	54
	0			57	4	61



Port Unloads - 8/12/2018

	Prince Rupert	Vancouver	West Coast Total	Thunder Bay	Total
CN	216	299	515	70	585
CP		370	370		370
	216	669	885	70	955



Port Terminal Status

Vancouver

Daily Activity for 8/12/2018

	Cars Arrived	Cars Received in Interchange	Cars Delivered in Interchange	Cars Placed for Unloading	Loads on Wheels at Destination As of 8/12/2018
CN	547	129	4	259	693
CP	179	5	129	278	634
SRY		4	5	5	17

Port Unloads

	08/12	08/11	Week To Date	Last Week
CN	299	135	2,399	2,131
CP	370	238	1,820	1,530
SRY		1	55	24

Age Profile of Loaded Cars Waiting Placement for Unloading

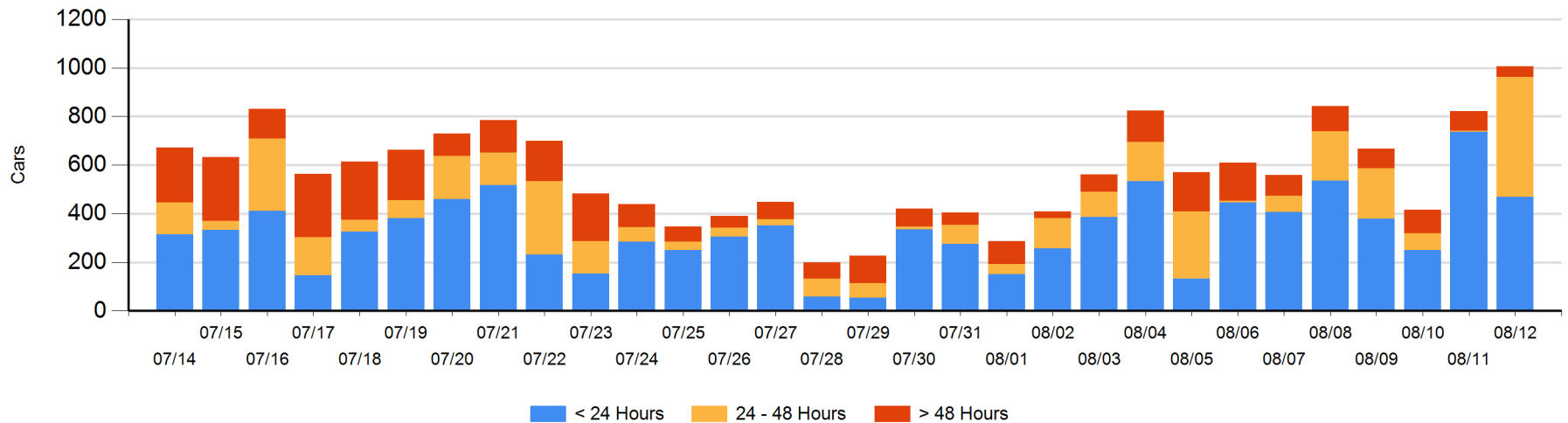
Today

	< 24 Hrs	24 - 48 Hrs	> 48-72 Hrs	> 72 Hrs	Total On Hand
CN	370	95	6	20	491
CP	99	398		19	516
SRY					0

Change in Last 24 Hours

	< 24 Hrs	24-48 Hrs	48 - 72 Hrs	> 72 Hrs
CN	221	89	-33	3
CP	-488	398	-11	6
SRY				

Loaded Cars on Hand Vancouver Waiting for Placement - Last 30 Days All Railways



Port Terminal Status

Prince Rupert

Daily Activity for 8/12/2018

Cars Arrived	Cars Received in Interchange	Cars Delivered in Interchange	Cars Placed for Unloading	Loads on Wheels at Destination As of 8/12/2018
				9
CN				

Port Unloads

	08/12	08/11	Week To Date	Last Week
CN	216	3	935	779

Age Profile of Loaded Cars Waiting Placement for Unloading

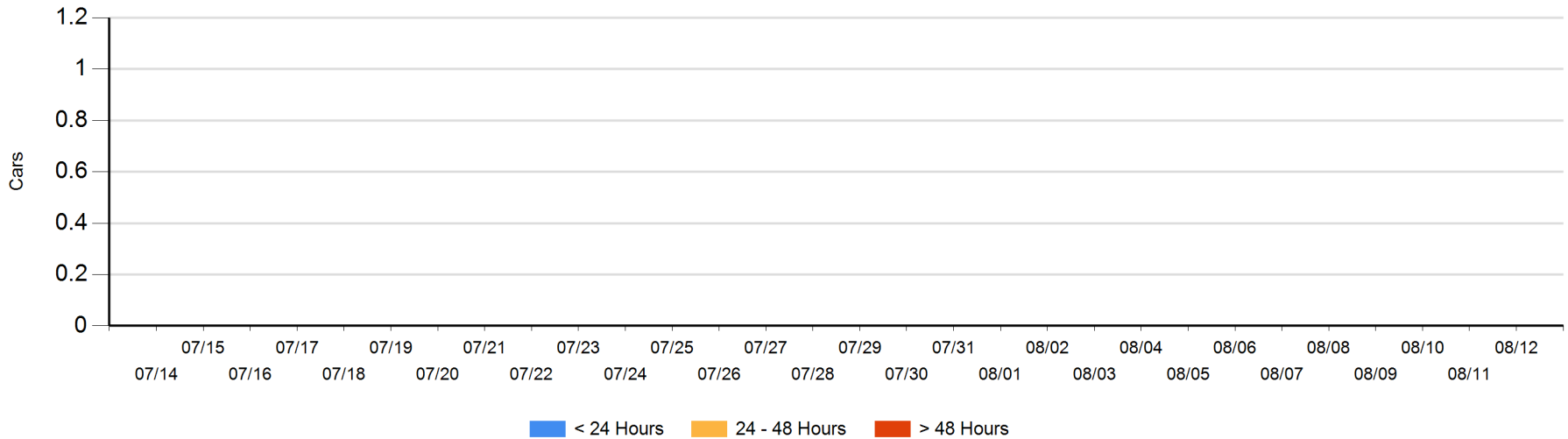
Today

< 24 Hrs	24 - 48 Hrs	> 48-72 Hrs	> 72 Hrs	Total On Hand
				0
CN				

Change in Last 24 Hours

< 24 Hrs	24-48 Hrs	48 - 72 Hrs	> 72 Hrs
CN			

Loaded Cars on Hand Prince Rupert Waiting for Placement - Last 30 Days All Railways



Port Terminal Status

Thunder Bay

Daily Activity for 8/12/2018

	Cars Arrived	Cars Received in Interchange	Cars Delivered in Interchange	Cars Placed for Unloading	Loads on Wheels at Destination As of 8/12/2018
CN				33	137
CP					87

Port Unloads

	08/12	08/11	Week To Date	Last Week
CN	70	1	579	375
CP		23	873	1,391

Age Profile of Loaded Cars Waiting Placement for Unloading

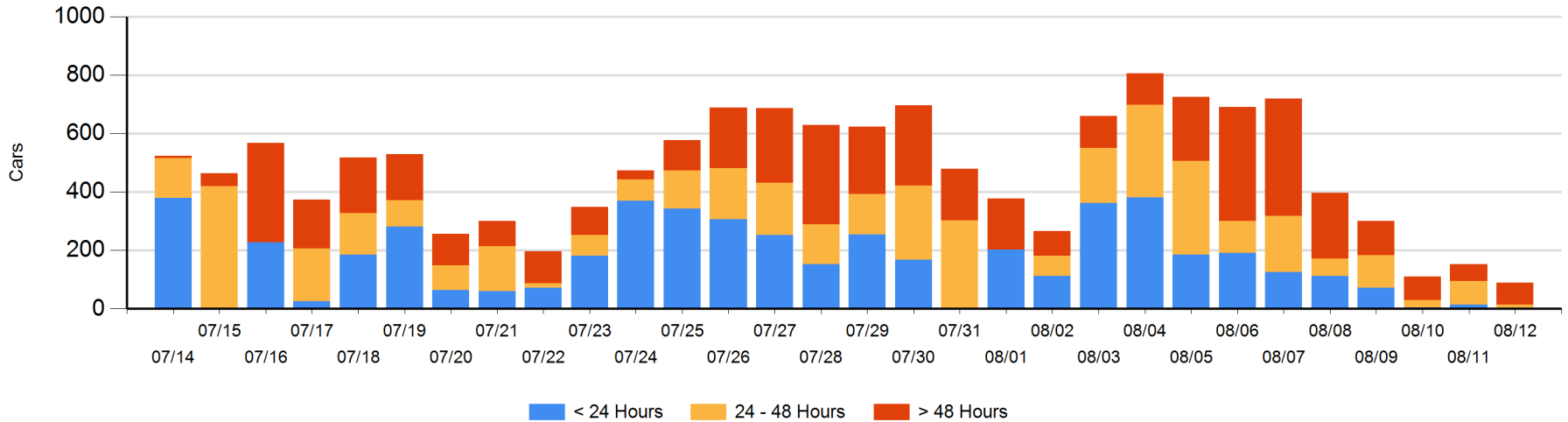
Today

	< 24 Hrs	24 - 48 Hrs	> 48-72 Hrs	> 72 Hrs	Total On Hand
CN		1	43		44
CP		14	4	28	46

Change in Last 24 Hours

	< 24 Hrs	24-48 Hrs	48 - 72 Hrs	> 72 Hrs
CN	-1	-75	43	
CP	-14	10	-9	-16

Loaded Cars on Hand Thunder Bay Waiting for Placement - Last 30 Days All Railways



Measurement Definitions

Loads on Wheels	<p>Count of loaded rail cars including all rail cars that have been released loaded at origin and have not been reported by the railway as unloaded at destination.</p> <p>Counts include all rail cars (hopper cars and boxcars) moving within a pipeline.</p>
Loads Not Moving	<p>Loaded rail cars for which the railways have not reported a movement event for 48 hours or more whether the rail car is at origin, enroute or at destination.</p>
Port Unloads	<p>Count of rail cars reported by railways as unloaded at the western port destinations of Vancouver, Prince Rupert and Thunder Bay.</p> <p>Unload counts include all rail cars (hopper cars and boxcars) unloaded by all receivers including major port terminals, transloaders and other receivers.</p>
Cars Arrived	<p>Count of rail cars reported as arrived at the destination railway terminal.</p>
Cars Received in Interchange	<p>Count of rail cars received in interchange by each railway within a destination railway terminal. Interchange activity is tracked for the Vancouver and Thunder Bay pipelines as applicable.</p>
Cars Delivered in Interchange	<p>Count of rail cars delivered in interchange by each railway within a destination railway terminal. Interchange activity is tracked for the Vancouver and Thunder Bay pipelines as applicable.</p>
Cars Placed for Unloading	<p>Count of rail cars reported by the railways as placed loaded at the receiver's facility for unloading.</p>
Loads on Wheels at Destination	<p>Count of rail cars that remain under load within the destination railway terminal including rail cars that have been reported as placed for unloading but not yet reported as unloaded.</p>
Waiting Placement for Unloading	<p>Count of rail cars that have been reported as arrived at the destination railway terminal but not reported as placed for unloading by the railway.</p> <p>For the Ports of Vancouver, Prince Rupert and Thunder Bay the count of rail cars waiting placement for unloading is categorized by age – i.e. the elapsed time from arrival at destination to the current report date.</p>