

Note to Reader

Alliance Grain Terminal in Vancouver has now begun planned maintenance which is expected to continue until mid-August.

SPEED READ

- Loads on wheels decreased overnight, reflecting a decline in CN volumes offset by higher CP volumes. On a net basis, volumes decreased due to lower traffic levels in the Vancouver, Prince Rupert and USA/MEX corridors offset by higher traffic in the Thunder Bay and E Canada corridors.
- Network fluidity improved slightly overnight, led by a decrease in idle car counts on CP by 9 % offset by an increase in idle car counts on CN by 28%. The total count of cars for 4+ days on both railways declined 16% overnight - now at 592 cars.
- Week 3 unloads concluded behind prior week's performance by more than 450 unloads, reflecting lower unloads at Vancouver and Thunder Bay offset by improved week over week performance at Prince Rupert.

=====

Loads on Wheels

- Loads on wheels fell 2% (-170) overnight due to lower volumes on CN offset by higher volumes on CP - combined total at 8,201 and 1% below the trailing 30-day average.
- On a net basis, the decline in loads on wheels reflects reduced volumes in the Vancouver, Prince Rupert and USA/MEX corridors offset by higher traffic in the Thunder Bay and E Canada corridors.
- CN volumes decreased 7% (-311) overnight with lower traffic in the Vancouver, Prince Rupert and USA/MEX corridors offset by higher traffic in the E Canada and Thunder Bay corridors. System wide CN loads on wheels now at 4,215 and 4% below the trailing 30-day average.
- CP volumes rose 3% (+100) overnight driven by an increase in traffic in the Thunder Bay corridor offset by a slight decline in traffic in the Vancouver and USA/MEX corridors. CP system wide loads on wheels currently at 3,773 and 2% above the trailing 30-day average.
- Vancouver currently at 4,226, fell 7% (-303) overnight and 1% below the trailing 30-day average.
- The Prince Rupert pipeline now at 1,050, decreased significantly by 20% (-269) overnight and 14% below the trailing 30 day-average.
- Thunder Bay volumes increased significantly by 21% (+257) overnight - currently at 1,469 and 6% below the trailing 30-day average with 70% of traffic moving on CP.

Hopper Car Rationing

- No hopper car rationing was reported for either CN or CP in week 3 and none expected in week 4.

Loads Not Moving

- **The count of cars not moving for 48+ hours decreased marginally by 1% (-14) overnight, marking lower counts on CP offset by higher counts on CN. Idle car counts now at 1,633 and 2% below the trailing 30 day-average.**
- CN
 - **The count of idle cars rose 28% (+102) overnight - idle car counts currently at 465.**
 - The number of cars idle for 4+ days declined 36% (-89) overnight - now at 155 cars, the lowest seen in the last 30 days.
 - The count of cars not moving for 7+ days increased 15% (+6) overnight - now at 47 cars.
 - Vancouver represents 59% of all idle cars.
 - In total 48% of all idle cars are dwelling at origin locations.

- CP
 - **CP counts decreased 9% (-116) overnight - idle car counts presently at 1,168.**
 - The number of cars idle for 4+ days decreased 5% (-22) overnight - now at 437 cars.
 - The number of cars idle for 7+ days declined 7% (-9) overnight - now at 115 cars.
 - Vancouver accounts for 53% of all idle cars.
 - In total 73% of all idle cars are dwelling at origin locations.

Port Performance

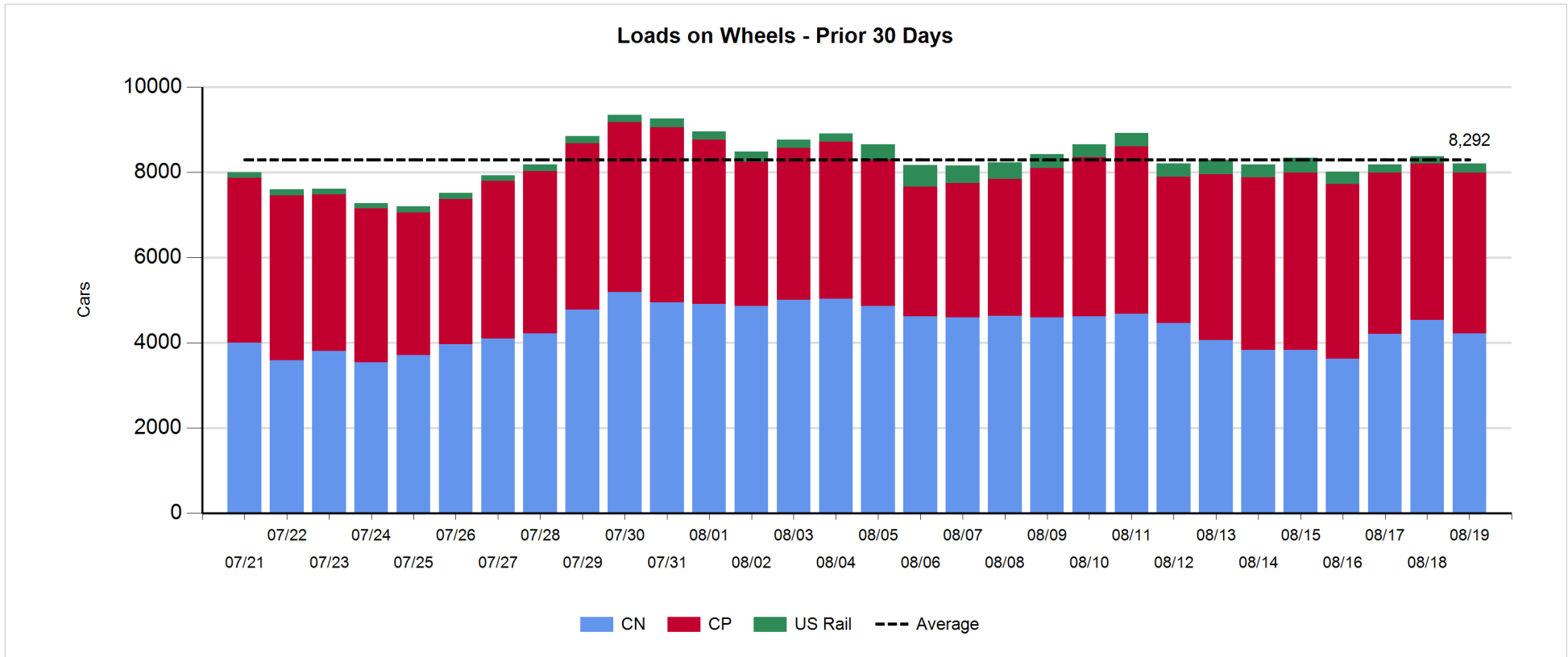
- CN and CP reported a total of 886 cars unloaded at the three major ports, now 3% above the trailing 30-day average. Week 3 unloads concluded behind last week's pace by more than 450 unloads, reflecting reduced unloads at Vancouver and Thunder Bay offset by higher unloads at Prince Rupert.
- Vancouver
 - 517 unloads reported by CN and CP at the Port of Vancouver; CN - 304 and CP - 213. Week 3 unloads finished behind last week's performance by about 650 unloads.
 - There are 1,000 cars on site at Vancouver with around 650 cars arriving at the port in the last 24 hours.
 - CN and CP have 950 cars in British Columbia en route to Vancouver, with 500 Kamloops and west and 78% of traffic currently moving on CP.
- Prince Rupert
 - Prince Rupert reported 269 unloads, the highest seen in the last 30 days, ended ahead of last week's unloads by nearly 300 unloads.
 - Loads on wheels now above 1,000 cars.
 - There are nearly 500 cars west of Jasper - predominantly Prince George and west.
 - There are more than 100 cars on site at Prince Rupert with more than 250 cars arriving at the port in the last 24 hours. Given the structure of the pipeline, there appears to be sufficient cars available to support unloads in the early part of week 4.
- Thunder Bay
 - 100 unloads reported at Thunder Bay yesterday. Week 3 unloads finished behind last week's pace by 100 unloads.
 - There are less than 800 cars on site at Thunder Bay with about 50 cars arriving at the port in the prior 24 hours.
 - There are fewer than 100 cars en route to Thunder Bay from Winnipeg and east. Cars on hand and those en route should support unloads in the next few days.

Daily Loads on Wheels - 8/19/2018

	E Canada	Prince Rupert	Thunder Bay	USA/MEX	Vancouver	Total
CN	483	1,050	435	198	2,049	4,215
CP	115		1,034	490	2,134	3,773
Short Line	28				43	71
US Rail				142		142
	626	1,050	1,469	830	4,226	8,201

Change in Loads on Wheels - Prior 24 Hours

	E Canada	Prince Rupert	Thunder Bay	USA/MEX	Vancouver	Total
CN	150	-269	148	-44	-296	-311
CP	0		109	-2	-7	100
Short Line	0				0	0
US Rail				41		41
	150	-269	257	-5	-303	-170

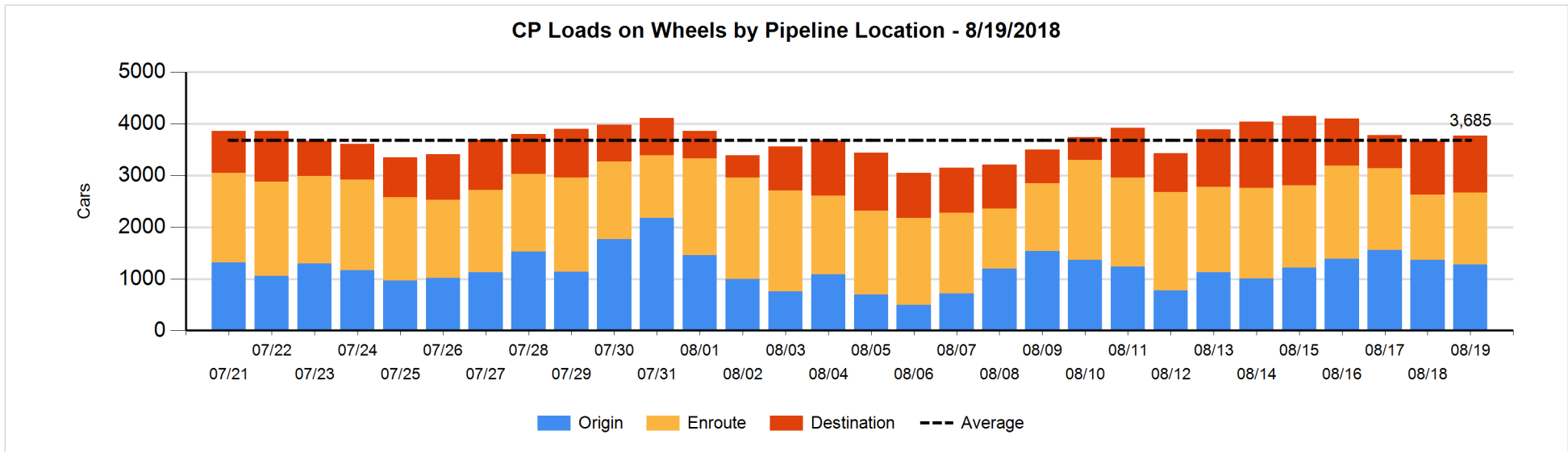
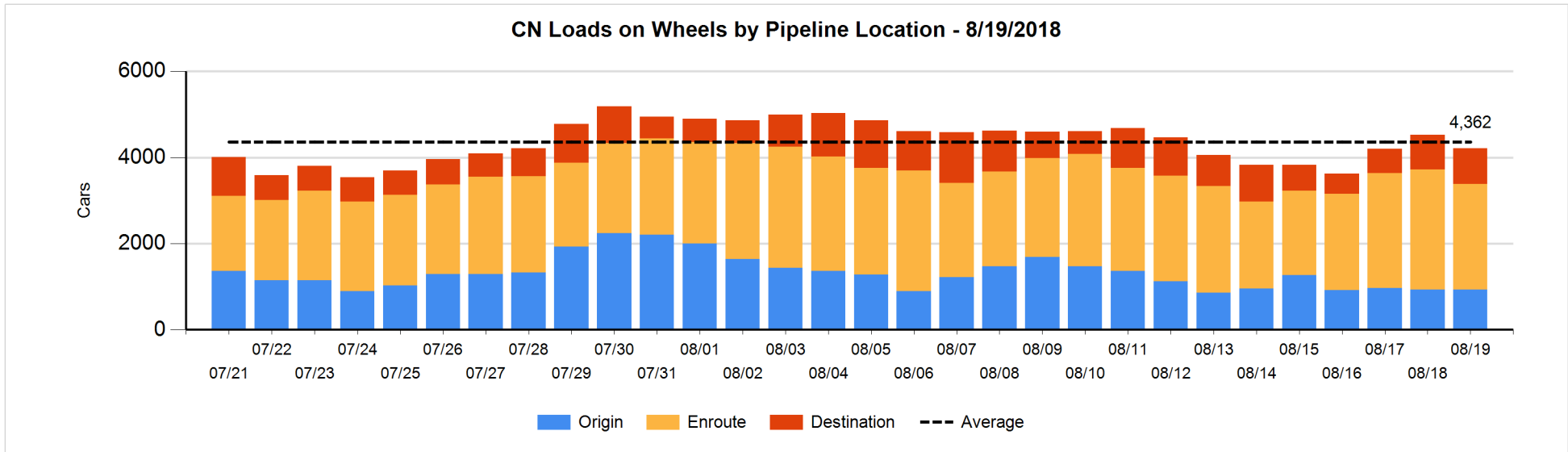


Daily Loads on Wheels By Pipeline Location - 8/19/2018

	E Canada	Prince Rupert	Thunder Bay	USA/MEX	Vancouver	Total
CN						
Origin	157	49	255	26	443	930
Enroute	280	890	80	154	1,052	2,456
Destination	46	111	100	18	549	824
	483	1,050	435	198	2,044	4,210
CP						
Origin	112		361	62	743	1,278
Enroute	3		11	420	956	1,390
Destination			662	8	435	1,105
	115		1,034	490	2,134	3,773
US Rail / Short Line						
Origin	3					3
Enroute				55		55
Destination	25			87	43	155
	28			142	43	213

Change in Daily Loads on Wheels By Pipeline Location - Prior 24 Hours

	E Canada	Prince Rupert	Thunder Bay	USA/MEX	Vancouver	Total
CN						
Origin	106	-114	148	-26	-112	2
Enroute	9	-137	-18	-18	-177	-341
Destination	35	-18	18	0	-7	28
	150	-269	148	-44	-296	-311
CP						
Origin	0		209	-189	-108	-88
Enroute	0		-25	179	-31	123
Destination			-75	8	132	65
	0		109	-2	-7	100
US Rail / Short Line						
Origin	0					0
Enroute				0		0
Destination	0			41	0	41
	0			41	0	41

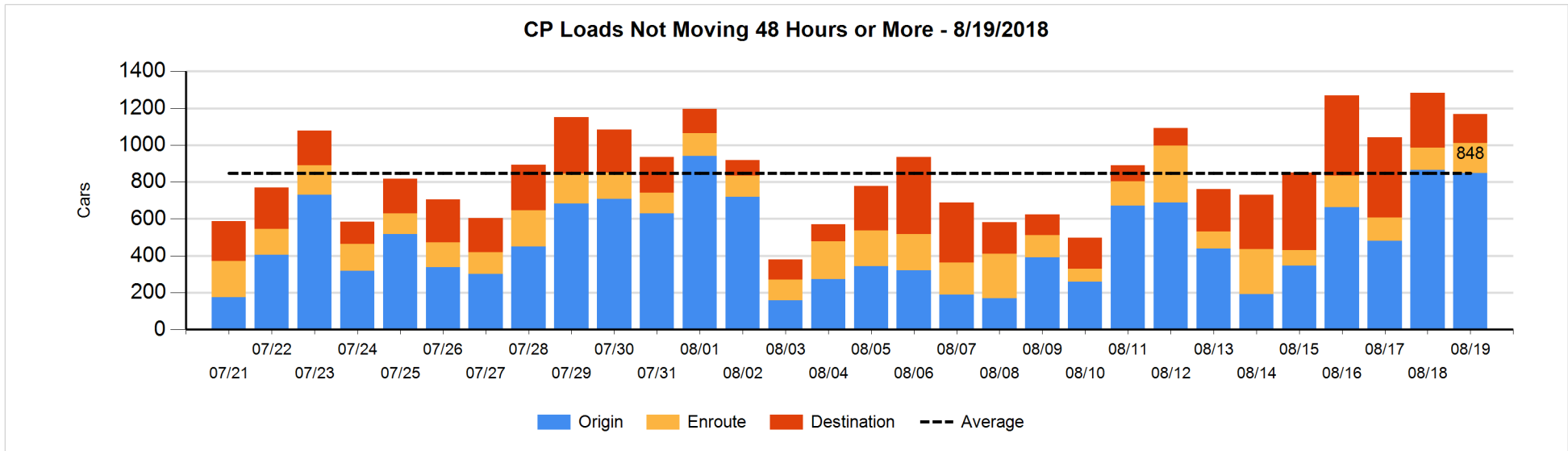
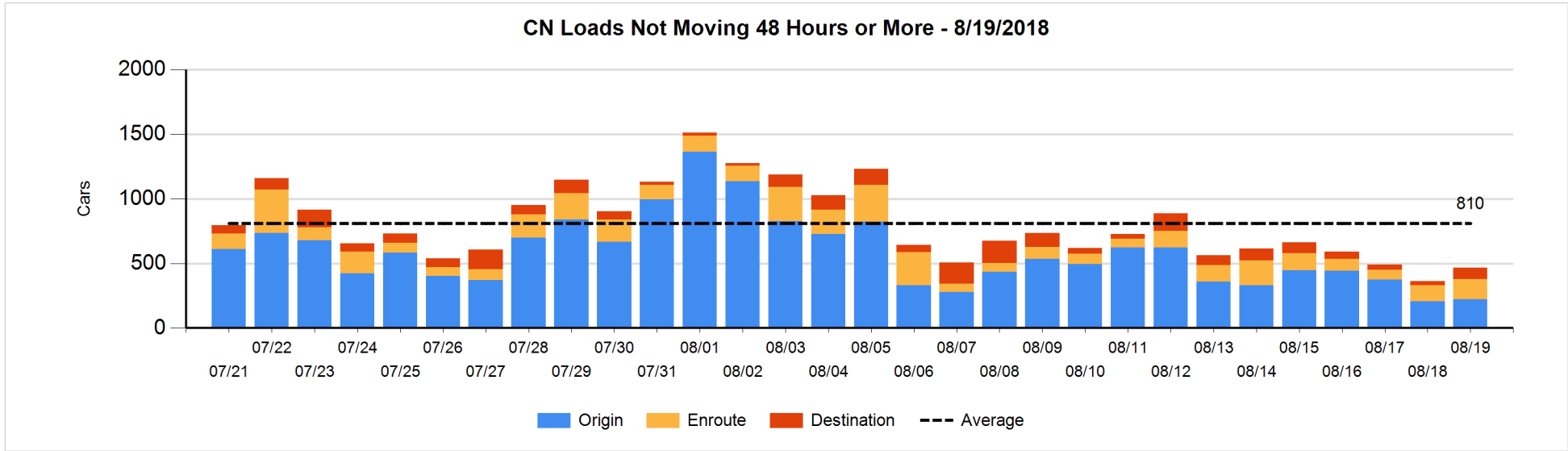


Loads Not Moving 48 Hours or More - 8/19/2018

	E Canada	Prince Rupert	Thunder Bay	USA/MEX	Vancouver	Total
CN						
Origin	7	49		26	141	223
Enroute	16	44		9	85	154
Destination	5	2	20	14	47	88
	28	95	20	49	273	465
CP						
Origin	112		152	62	523	849
Enroute	1		11	103	46	161
Destination			110		48	158
	113		273	165	617	1168
US Rail / Short Line						
Origin	3					3
Enroute				41		41
Destination	25			37	25	87
	28			78	25	131

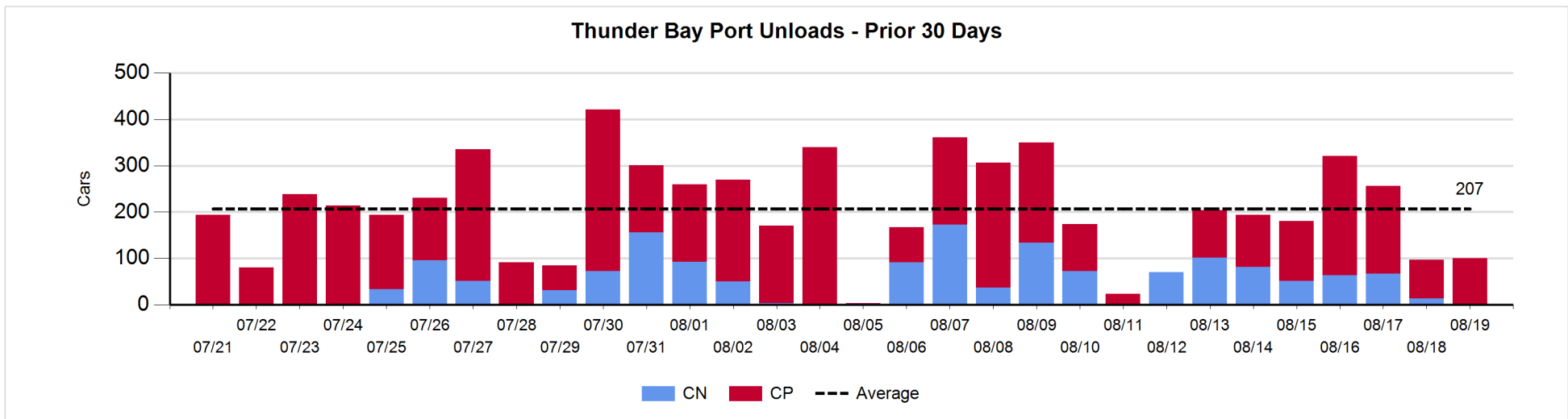
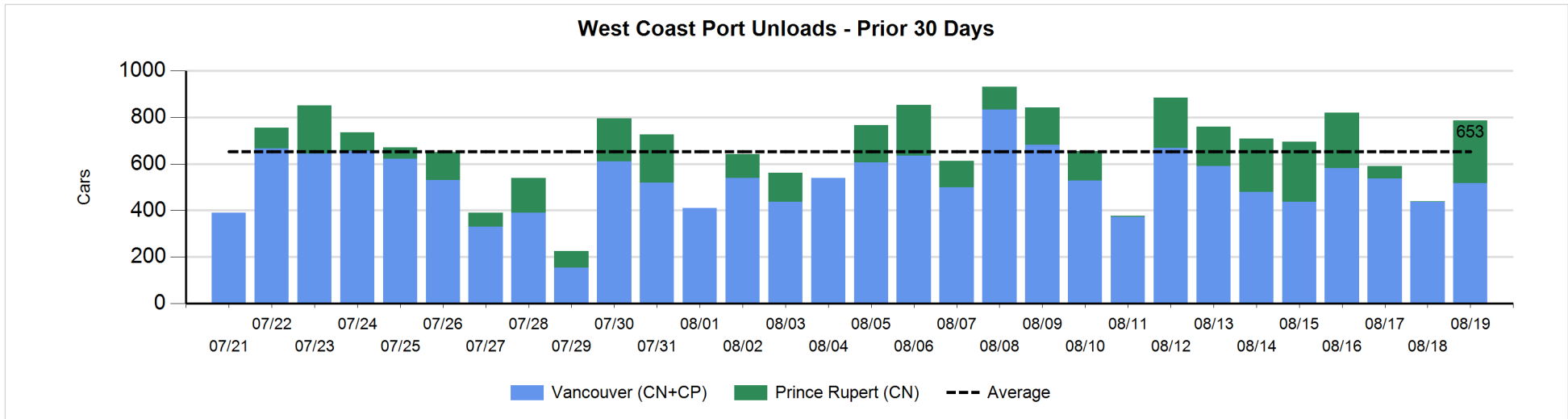
Change in Loads Not Moving 48 Hours or More - 8/19/2018

	E Canada	Prince Rupert	Thunder Bay	USA/MEX	Vancouver	Total
CN						
Origin	0	-106		-5	127	16
Enroute	1	16		3	9	29
Destination	1	0	20	2	34	57
	2	-90	20	0	170	102
CP						
Origin	25		28	-34	-35	-16
Enroute	0		-22	60	1	39
Destination			-140		1	-139
	25		-134	26	-33	-116
US Rail / Short Line						
Origin	0					0
Enroute				7		7
Destination	0			8	6	14
	0			15	6	21



Port Unloads - 8/19/2018

	Prince Rupert	Vancouver	West Coast Total	Thunder Bay	Total
CN	269	304	573		573
CP		213	213	100	313
	269	517	786	100	886



Port Terminal Status

Vancouver

Daily Activity for 8/19/2018

	Cars Arrived	Cars Received in Interchange	Cars Delivered in Interchange	Cars Placed for Unloading	Loads on Wheels at Destination As of 8/19/2018
CN	344	10	95	272	549
CP	300	95	12	202	435
SRY		2		3	43

Port Unloads

	08/19	08/18	Week To Date	Last Week
CN	304	280	2,107	2,399
CP	213	159	1,472	1,820
SRY		11	40	55

Age Profile of Loaded Cars Waiting Placement for Unloading

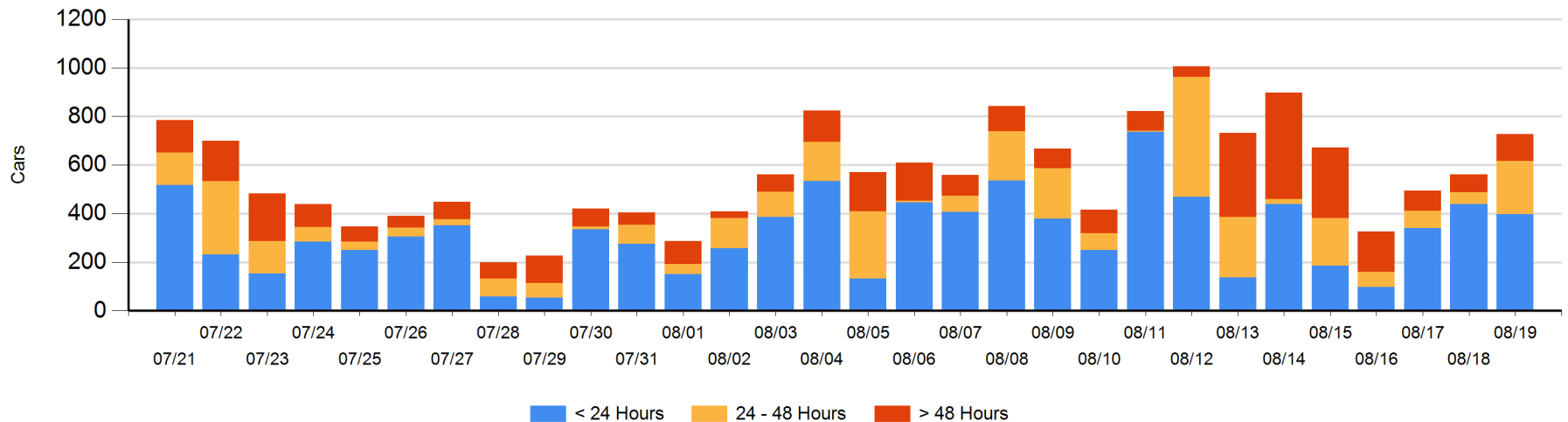
Today

	< 24 Hrs	24 - 48 Hrs	> 48-72 Hrs	> 72 Hrs	Total On Hand
CN	211	120	9	39	379
CP	187	99	31	31	348
SRY					0

Change in Last 24 Hours

	< 24 Hrs	24-48 Hrs	48 - 72 Hrs	> 72 Hrs
CN	41	111	-3	8
CP	-82	60	25	5
SRY				

Loaded Cars on Hand Vancouver Waiting for Placement - Last 30 Days All Railways



Port Terminal Status

Prince Rupert

Daily Activity for 8/19/2018

	Cars Arrived	Cars Received in Interchange	Cars Delivered in Interchange	Cars Placed for Unloading	Loads on Wheels at Destination As of 8/19/2018
CN	251			251	111

Port Unloads

	08/19	08/18	Week To Date	Last Week
CN	269	1	1,219	935

Age Profile of Loaded Cars Waiting Placement for Unloading

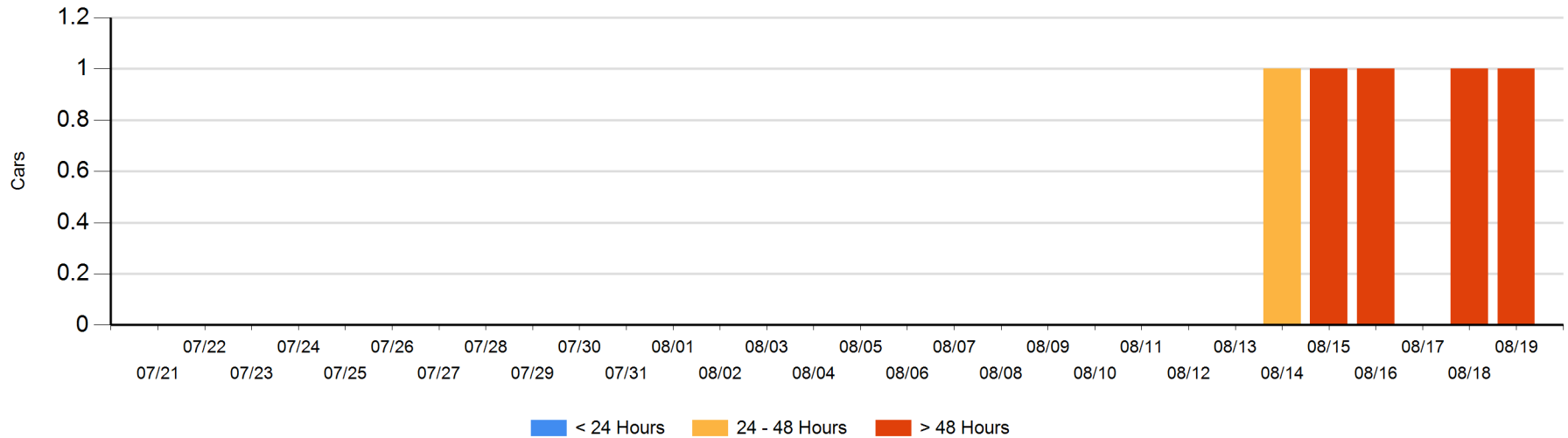
Today

	< 24 Hrs	24 - 48 Hrs	> 48-72 Hrs	> 72 Hrs	Total On Hand
CN				1	1

Change in Last 24 Hours

	< 24 Hrs	24-48 Hrs	48 - 72 Hrs	> 72 Hrs
CN				0

Loaded Cars on Hand Prince Rupert Waiting for Placement - Last 30 Days All Railways



Port Terminal Status

Thunder Bay

Daily Activity for 8/19/2018

	Cars Arrived	Cars Received in Interchange	Cars Delivered in Interchange	Cars Placed for Unloading	Loads on Wheels at Destination As of 8/19/2018
CN	18			41	100
CP	25			155	662

Port Unloads

	08/19	08/18	Week To Date	Last Week
CN		13	378	579
CP	100	84	974	873

Age Profile of Loaded Cars Waiting Placement for Unloading

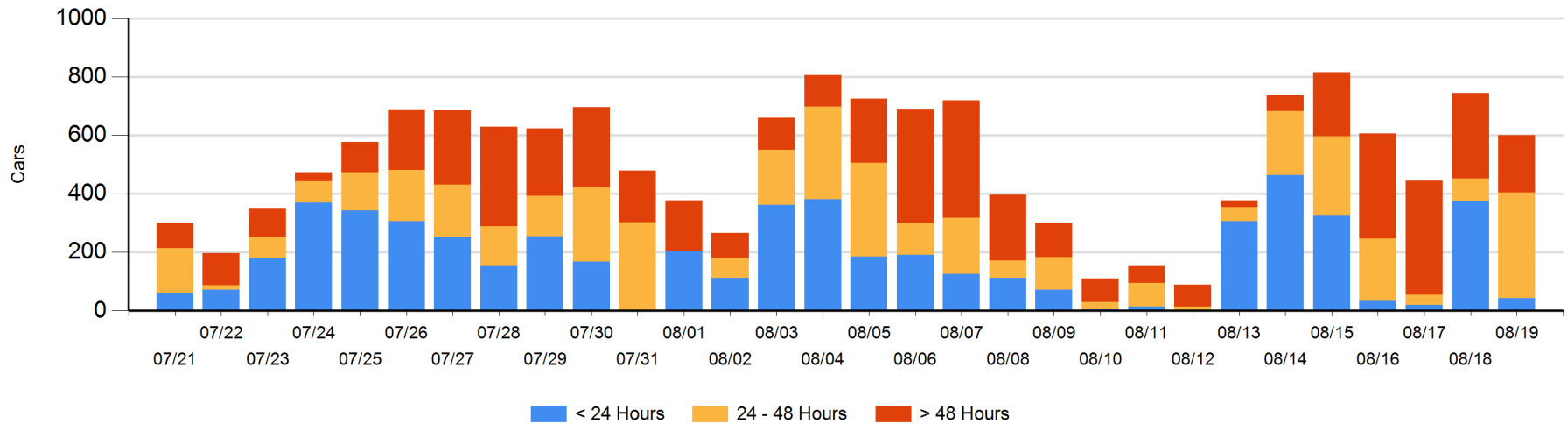
Today

	< 24 Hrs	24 - 48 Hrs	> 48-72 Hrs	> 72 Hrs	Total On Hand
CN	18	8	13	20	59
CP	25	353	56	107	541

Change in Last 24 Hours

	< 24 Hrs	24-48 Hrs	48 - 72 Hrs	> 72 Hrs
CN	10	-13	-20	0
CP	-343	297	56	-132

Loaded Cars on Hand Thunder Bay Waiting for Placement - Last 30 Days All Railways



Measurement Definitions

Loads on Wheels	<p>Count of loaded rail cars including all rail cars that have been released loaded at origin and have not been reported by the railway as unloaded at destination.</p> <p>Counts include all rail cars (hopper cars and boxcars) moving within a pipeline.</p>
Loads Not Moving	<p>Loaded rail cars for which the railways have not reported a movement event for 48 hours or more whether the rail car is at origin, enroute or at destination.</p>
Port Unloads	<p>Count of rail cars reported by railways as unloaded at the western port destinations of Vancouver, Prince Rupert and Thunder Bay.</p> <p>Unload counts include all rail cars (hopper cars and boxcars) unloaded by all receivers including major port terminals, transloaders and other receivers.</p>
Cars Arrived	<p>Count of rail cars reported as arrived at the destination railway terminal.</p>
Cars Received in Interchange	<p>Count of rail cars received in interchange by each railway within a destination railway terminal. Interchange activity is tracked for the Vancouver and Thunder Bay pipelines as applicable.</p>
Cars Delivered in Interchange	<p>Count of rail cars delivered in interchange by each railway within a destination railway terminal. Interchange activity is tracked for the Vancouver and Thunder Bay pipelines as applicable.</p>
Cars Placed for Unloading	<p>Count of rail cars reported by the railways as placed loaded at the receiver's facility for unloading.</p>
Loads on Wheels at Destination	<p>Count of rail cars that remain under load within the destination railway terminal including rail cars that have been reported as placed for unloading but not yet reported as unloaded.</p>
Waiting Placement for Unloading	<p>Count of rail cars that have been reported as arrived at the destination railway terminal but not reported as placed for unloading by the railway.</p> <p>For the Ports of Vancouver, Prince Rupert and Thunder Bay the count of rail cars waiting placement for unloading is categorized by age – i.e. the elapsed time from arrival at destination to the current report date.</p>