

## SPEED READ

- Loads on wheels increased slightly overnight, indicating a decline in CN volumes offset by higher CP volumes. On a net basis, volumes increased due to higher traffic in the Thunder Bay, E Canada and Vancouver corridors offset by lower traffic levels in the Prince Rupert and USA/MEX corridors.
- Network fluidity deteriorated overnight, led by an increase in idle car counts on CN by 36% offset by a decline in idle car counts on CP by 8%. The total count of cars for 4+ days on both railways decreased 4% overnight - presently at 539 cars.
- Three days in Week 4 unloads now ahead of prior week's performance by more than 250 unloads, indicating an improvement in week over week performance at Vancouver and Prince Rupert offset by reduced unloads at Thunder Bay.

---

## Loads on Wheels

- Loads on wheels increased marginally (+21) overnight due to lower traffic levels on CN offset by higher traffic levels on CP - combined total at 8,037 and 4% below the trailing 30-day average.
- On a net basis, the increase in loads on wheels reflects higher traffic levels in the Thunder Bay, E Canada and Vancouver corridors offset by reduced traffic levels in the Prince Rupert and USA/MEX corridors.
- CN volumes fell 6% (-240) overnight and have now decreased for the fourth consecutive day, with lower volumes across all corridors. System wide CN loads on wheels currently at 3,538, the lowest seen in the last 30 days, and 19% below the trailing 30-day average.
- CP volumes gained 3% (+140) overnight and have now increased for four consecutive days, driven by an increase in traffic levels across all corridors other than USA/MEX. CP system wide loads on wheels presently at 4,144 and 12% above the trailing 30-day average.
- Vancouver presently at 3,884, remained largely unchanged (+9) overnight and 9% below the trailing 30-day average.
- The Prince Rupert pipeline currently at 921, the lowest seen in the last 30 days, declined significantly by 11% (-109) overnight and 24% below the trailing 30 day-average.
- Thunder Bay volumes rose 6% (+96) overnight - presently at 1,775 and 13% above the trailing 30-day average with 81% of traffic moving on CP.

## Hopper Car Rationing

- No hopper car rationing was reported for either CN or CP in week 3 and none expected in week 4.

## Loads Not Moving

- **The count of cars not moving for 48+ hours increased 3% (+34) overnight, reflecting higher counts on CN offset by lower counts on CP. Idle car counts currently at 1,215 and 25% below the trailing 30 day-average.**
- CN
  - **The count of idle cars increased 36% (+108) overnight - idle car counts presently at 406.**
  - The number of cars idle for 4+ days decreased significantly by 45% (-100) overnight - presently at 120 cars, the lowest seen in the last 30 days.
  - The count of cars not moving for 7+ days declined 30% (-30) overnight - presently at 71 cars.
  - Vancouver represents 52% of all idle cars.
  - In total 61% of all idle cars are dwelling at origin locations.
- CP
  - **CP counts declined 8% (-74) overnight - idle car counts now at 809.**
  - The number of cars idle for 4+ days increased 23% (+77) overnight - presently at 419 cars.

- The number of cars idle for 7+ days rose 4% (+6) overnight and have now increased for the third consecutive day - now at 170 cars, the highest seen in the last 30 days.
- Vancouver accounts for 41% of all idle cars.
- In total 46% of all idle cars are dwelling at origin locations.

### **Port Performance**

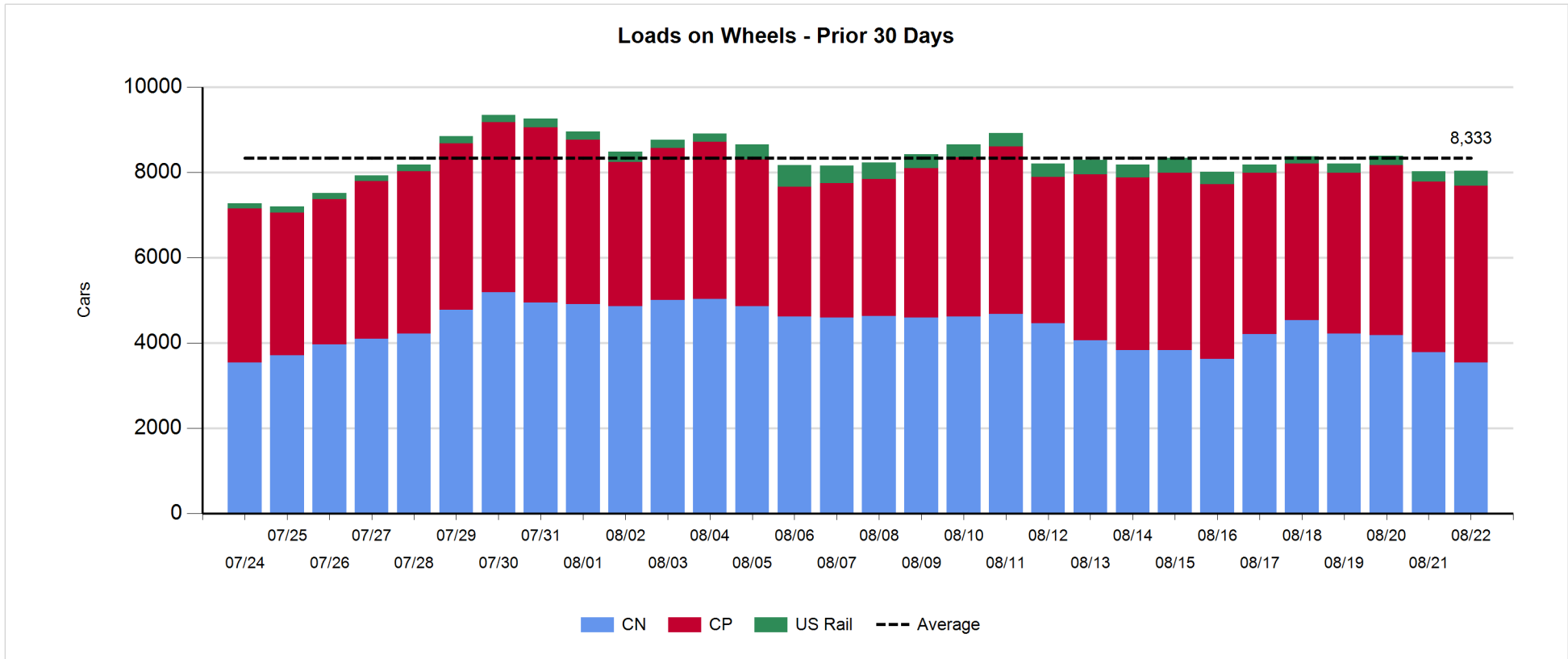
- CN and CP reported a total of 964 cars unloaded at the three major ports, now 10% above the trailing 30-day average. Three days in Week 4 unloads are tracking ahead of last week's pace by more than 250 unloads, indicating higher unloads at Vancouver and Prince Rupert offset by reduced unloads at Thunder Bay.
- Vancouver
  - 658 unloads reported by CN and CP at the Port of Vancouver; CN - 363 and CP - 295. Three days in Week 4 unloads are tracking ahead of last week's performance by more than 350 unloads.
  - There are 950 cars on site at Vancouver with more than 450 cars arriving at the port in the last 24 hours.
  - CN and CP have less than 650 cars in British Columbia en route to Vancouver, with 250 Kamloops and west and 69% of traffic currently moving on CP.
- Prince Rupert
  - Prince Rupert reported 240 unloads, now ahead of last week's unloads after three days by 10 unloads.
  - Loads on wheels now below 1,000 cars.
  - There are nearly 200 cars west of Jasper - predominantly Prince George and west.
  - There are currently 160 cars on site at Prince Rupert with fewer than 300 cars arriving at the port in the last 24 hours. Given the structure of the pipeline, there appears to be sufficient cars available to support unloads in the next few days.
- Thunder Bay
  - 66 unloads reported at Thunder Bay yesterday. Three days in Week 4 unloads are tracking behind last week's pace by more than 100 unloads.
  - There are 600 cars on site at Thunder Bay with more than 100 cars arriving at the port in the prior 24 hours.
  - There are about 600 cars en route to Thunder Bay from Winnipeg and east. Cars on hand and those en route should support unloads for the balance of the week.

**Daily Loads on Wheels - 8/22/2018**

	E Canada	Prince Rupert	Thunder Bay	USA/MEX	Vancouver	Total
CN	476	921	339	234	1,568	3,538
CP	195		1,436	228	2,285	4,144
Short Line	14				31	45
US Rail				310		310
	685	921	1,775	772	3,884	8,037

**Change in Loads on Wheels - Prior 24 Hours**

	E Canada	Prince Rupert	Thunder Bay	USA/MEX	Vancouver	Total
CN	-19	-109	-3	-20	-89	-240
CP	82		99	-149	108	140
Short Line	-11				-10	-21
US Rail				142		142
	52	-109	96	-27	9	21

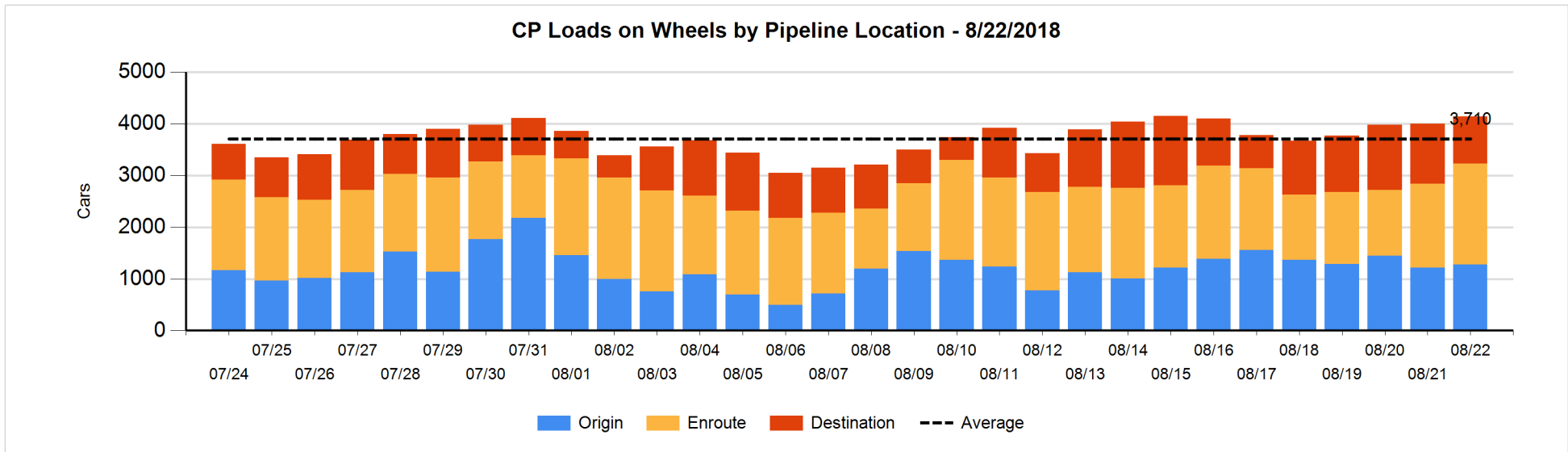
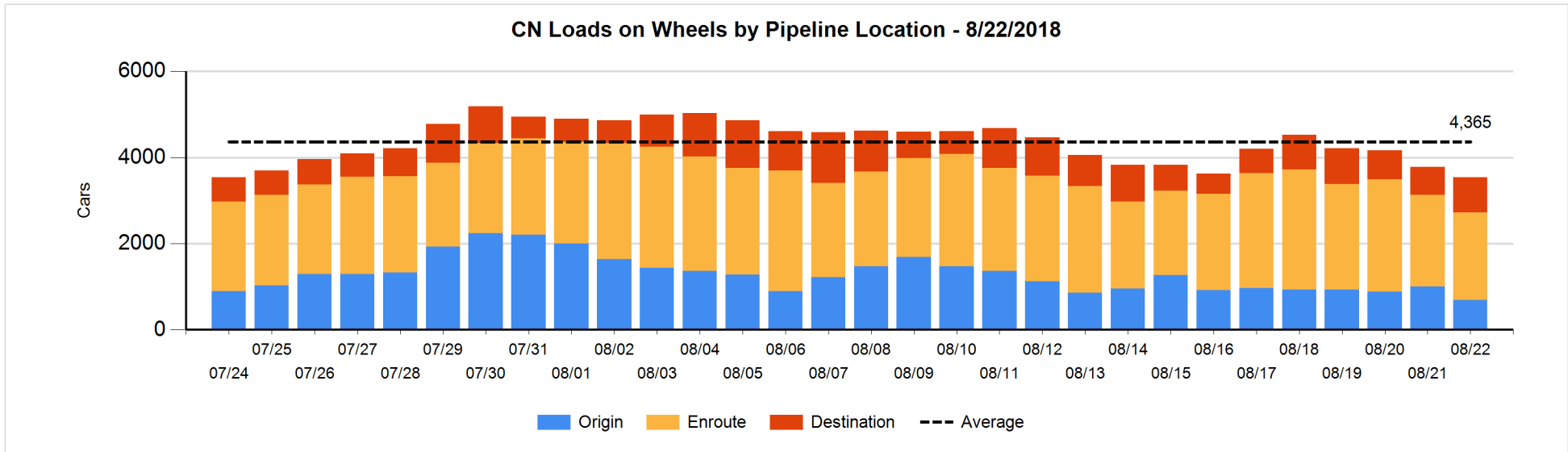


**Daily Loads on Wheels By Pipeline Location - 8/22/2018**

	E Canada	Prince Rupert	Thunder Bay	USA/MEX	Vancouver	Total
CN						
Origin	6	280	52	32	315	685
Enroute	429	482	150	182	797	2,040
Destination	41	159	137	20	456	813
	476	921	339	234	1,568	3,538
CP						
Origin	162		399	10	702	1,273
Enroute	33		579	218	1,122	1,952
Destination			458		461	919
	195		1,436	228	2,285	4,144
US Rail / Short Line						
Origin						
Enroute	3			169		172
Destination	11			141	31	183
	14			310	31	355

**Change in Daily Loads on Wheels By Pipeline Location - Prior 24 Hours**

	E Canada	Prince Rupert	Thunder Bay	USA/MEX	Vancouver	Total
CN						
Origin	-97	-172	24	-33	-38	-316
Enroute	63	10	-85	30	-105	-87
Destination	15	53	58	-17	54	163
	-19	-109	-3	-20	-89	-240
CP						
Origin	100		-221	2	173	54
Enroute	-18		330	-101	117	328
Destination			-10	-50	-182	-242
	82		99	-149	108	140
US Rail / Short Line						
Origin						
Enroute	3			112		115
Destination	-14			30	-10	6
	-11			142	-10	121

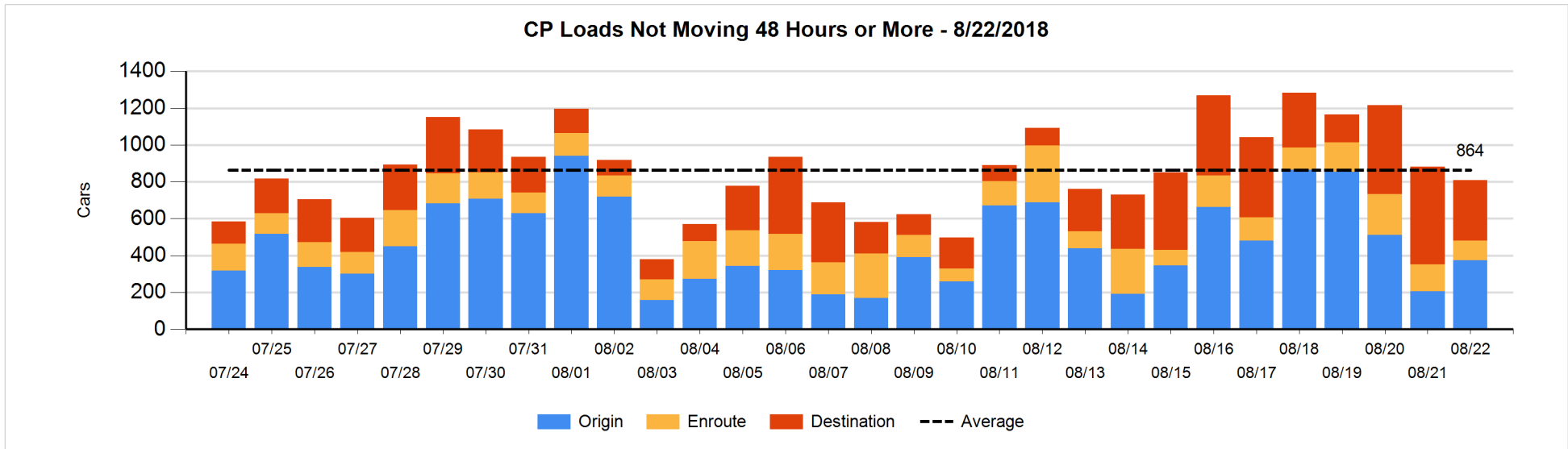
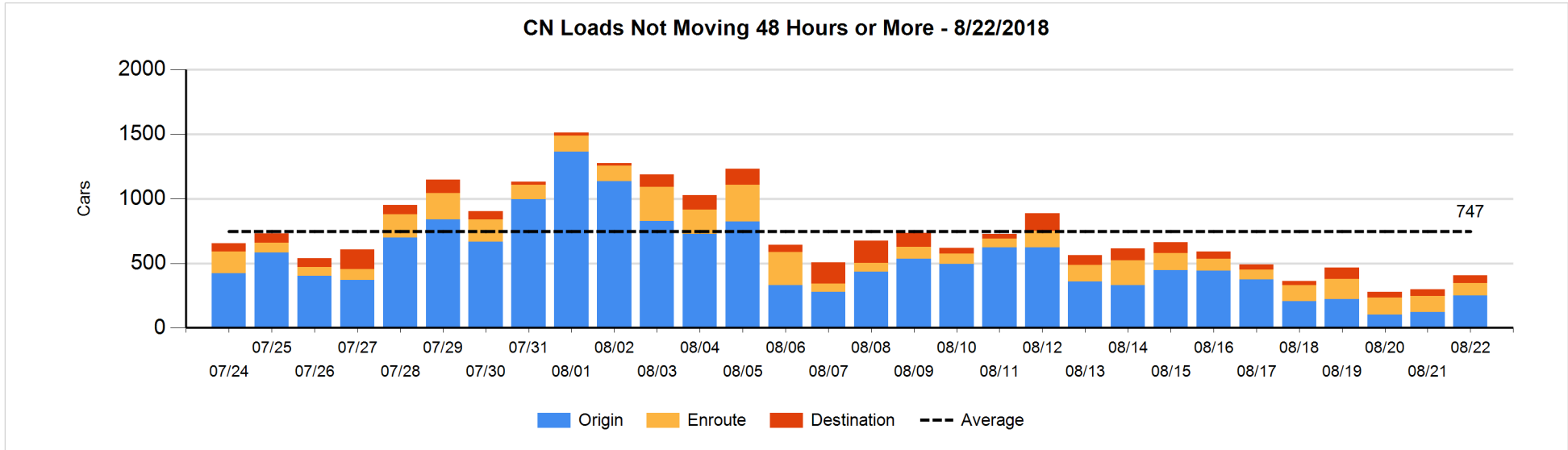


**Loads Not Moving 48 Hours or More - 8/22/2018**

	E Canada	Prince Rupert	Thunder Bay	USA/MEX	Vancouver	Total
<b>CN</b>						
Origin		110		1	138	249
Enroute	6	31	26	4	32	99
Destination		4		12	42	58
	6	145	26	17	212	406
<b>CP</b>						
Origin	62		122	3	188	375
Enroute			11	57	38	106
Destination			226		102	328
	62		359	60	328	809
<b>US Rail / Short Line</b>						
Origin						
Enroute				18		18
Destination				22	20	42
				40	20	60

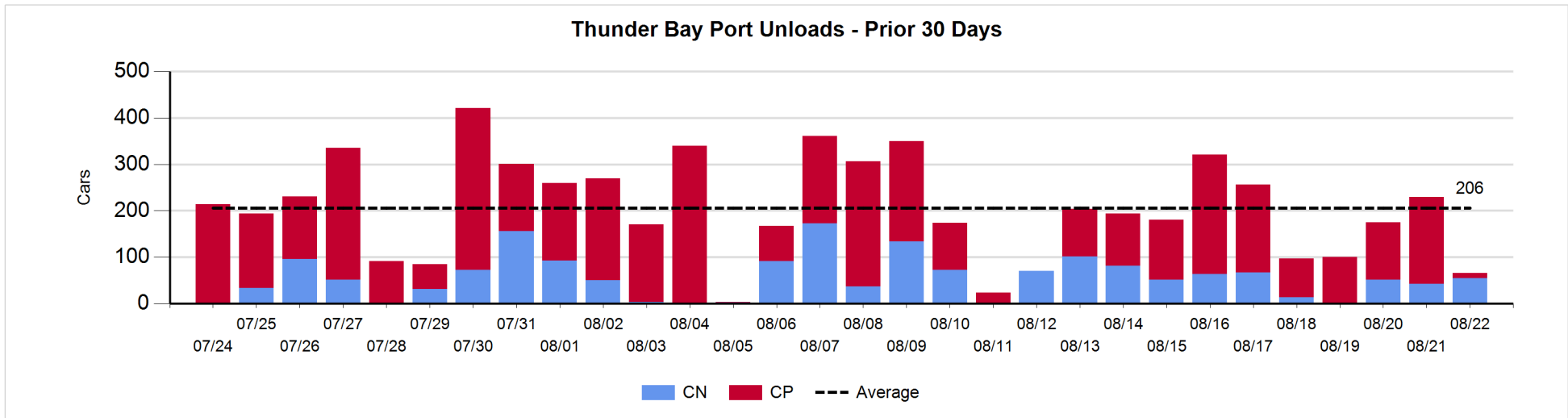
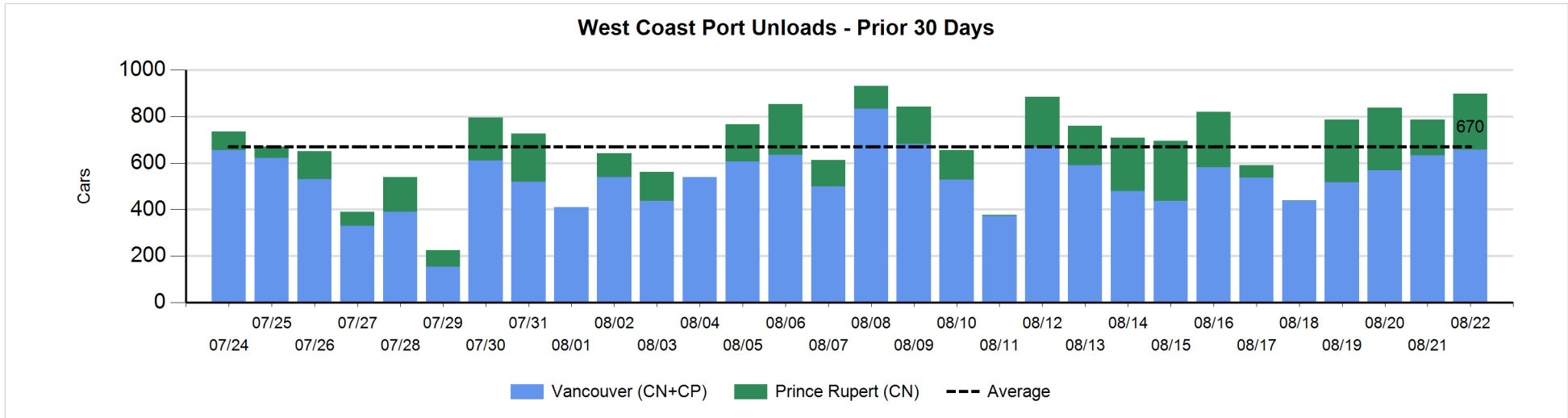
**Change in Loads Not Moving 48 Hours or More - 8/22/2018**

	E Canada	Prince Rupert	Thunder Bay	USA/MEX	Vancouver	Total
<b>CN</b>						
Origin		61	-28	0	96	129
Enroute	-7	14	26	-4	-57	-28
Destination	-1	1		-3	10	7
	-8	76	-2	-7	49	108
<b>CP</b>						
Origin	0		110	2	56	168
Enroute			0	-38	0	-38
Destination			-108	-3	-93	-204
	0		2	-39	-37	-74
<b>US Rail / Short Line</b>						
Origin						
Enroute				-6		-6
Destination				5	-10	-5
				-1	-10	-11



Port Unloads - 8/22/2018

	Prince Rupert	Vancouver	West Coast Total	Thunder Bay	Total
CN	240	363	603	55	658
CP		295	295	11	306
	240	658	898	66	964





**Port Terminal Status**

**Vancouver**

Daily Activity for 8/22/2018

	Cars Arrived	Cars Received in Interchange	Cars Delivered in Interchange	Cars Placed for Unloading	Loads on Wheels at Destination As of 8/22/2018
CN	230	127	101	333	456
CP	238	99	129	312	461
SRY	1	4		15	31

**Port Unloads**

	08/22	08/21	Week To Date	Last Week
CN	363	360	1,084	2,107
CP	295	273	774	1,472
SRY	15	11	32	40

**Age Profile of Loaded Cars Waiting Placement for Unloading**

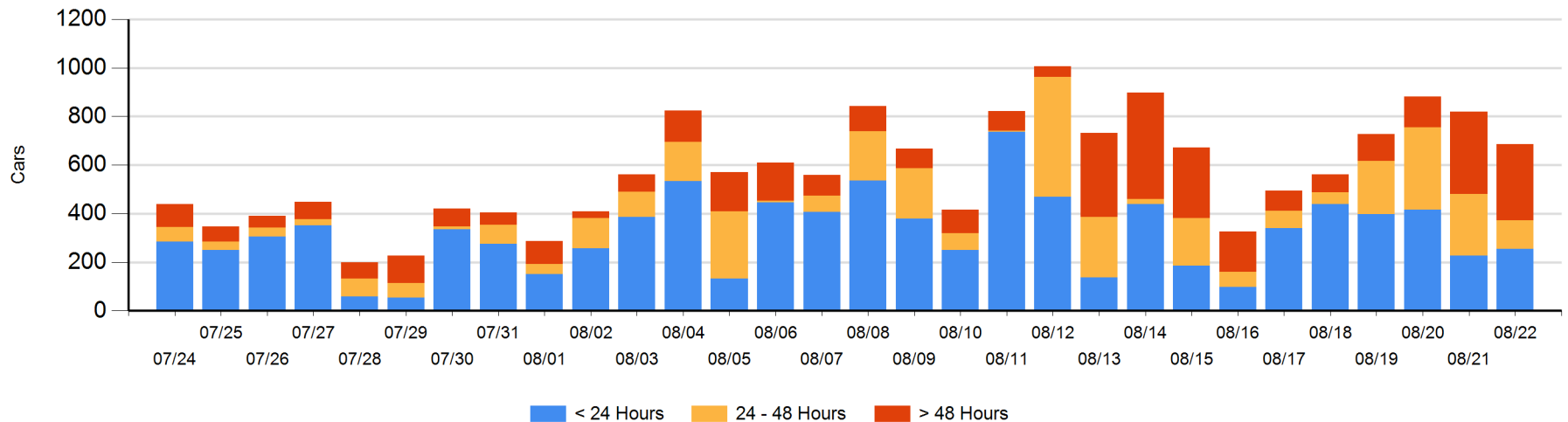
**Today**

	< 24 Hrs	24 - 48 Hrs	> 48-72 Hrs	> 72 Hrs	Total On Hand
CN	131	103	120	70	424
CP	122	15	2	121	260
SRY	1				1

**Change in Last 24 Hours**

	< 24 Hrs	24-48 Hrs	48 - 72 Hrs	> 72 Hrs
CN	-47	-83	46	4
CP	73	-52	-170	95
SRY	0			

**Loaded Cars on Hand Vancouver Waiting for Placement - Last 30 Days All Railways**



**Port Terminal Status**

**Prince Rupert**

Daily Activity for 8/22/2018

	Cars Arrived	Cars Received in Interchange	Cars Delivered in Interchange	Cars Placed for Unloading	Loads on Wheels at Destination As of 8/22/2018
CN	288			288	159

**Port Unloads**

	08/22	08/21	Week To Date	Last Week
CN	240	154	664	1,219

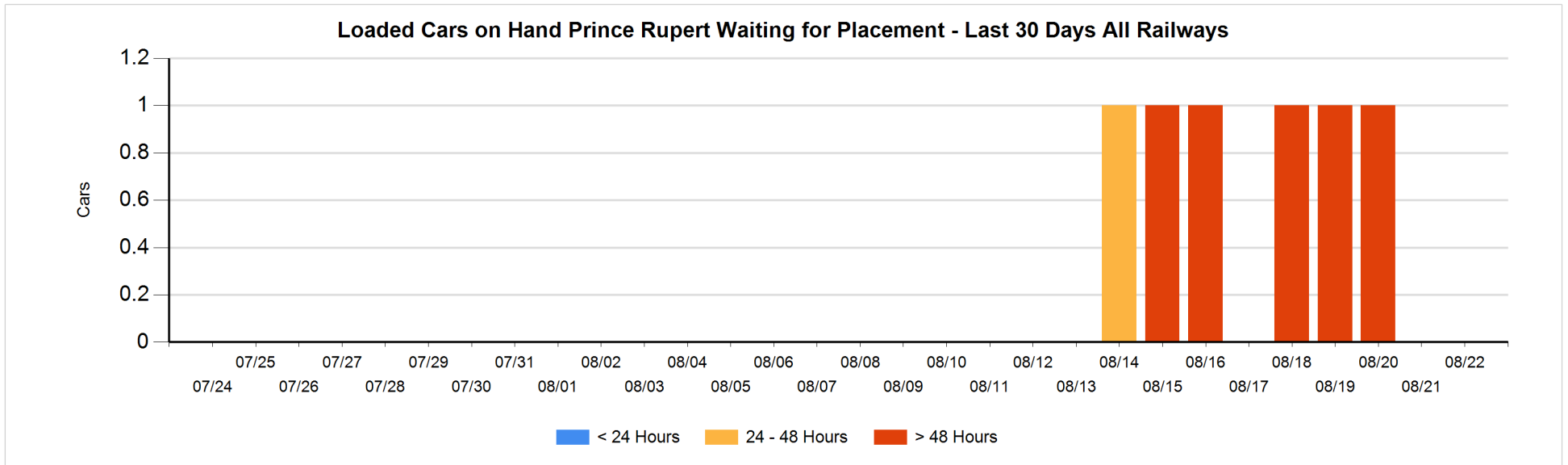
**Age Profile of Loaded Cars Waiting Placement for Unloading**

**Today**

	< 24 Hrs	24 - 48 Hrs	> 48-72 Hrs	> 72 Hrs	Total On Hand
CN					0

**Change in Last 24 Hours**

	< 24 Hrs	24-48 Hrs	48 - 72 Hrs	> 72 Hrs
CN				



**Port Terminal Status**

**Thunder Bay**

Daily Activity for 8/22/2018

	Cars Arrived	Cars Received in Interchange	Cars Delivered in Interchange	Cars Placed for Unloading	Loads on Wheels at Destination As of 8/22/2018
CN	113			85	137
CP	1			106	458

**Port Unloads**

	08/22	08/21	Week To Date	Last Week
CN	55	43	149	378
CP	11	187	322	974

**Age Profile of Loaded Cars Waiting Placement for Unloading**

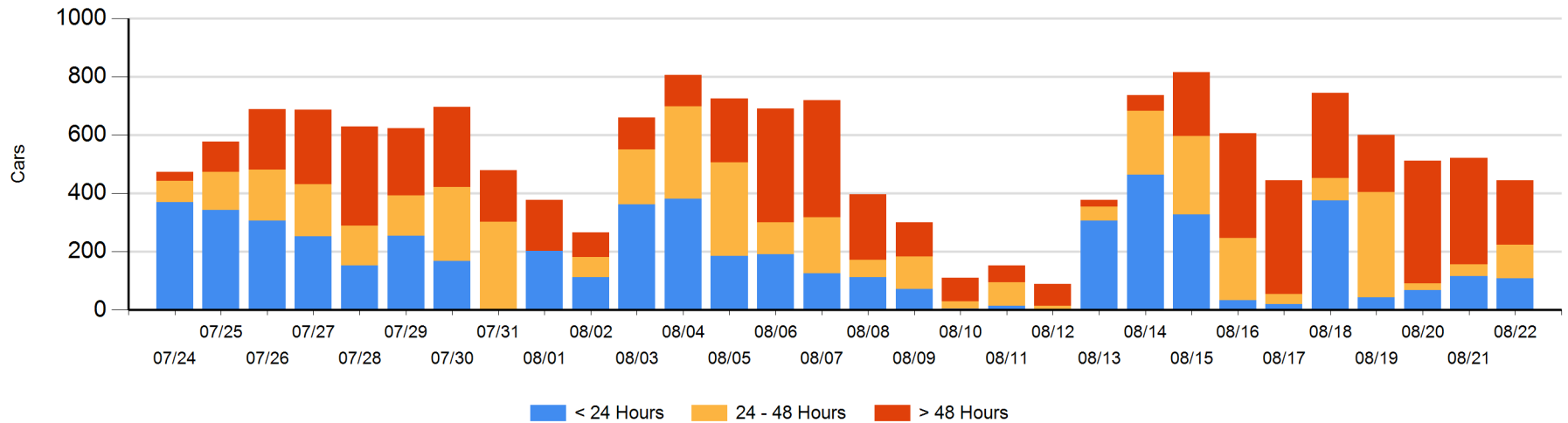
**Today**

	< 24 Hrs	24 - 48 Hrs	> 48-72 Hrs	> 72 Hrs	Total On Hand
CN	107				107
CP	1	116		220	337

**Change in Last 24 Hours**

	< 24 Hrs	24-48 Hrs	48 - 72 Hrs	> 72 Hrs
CN	106	-39	-18	-21
CP	-115	116	-4	-102

**Loaded Cars on Hand Thunder Bay Waiting for Placement - Last 30 Days All Railways**



## Measurement Definitions

Loads on Wheels	<p>Count of loaded rail cars including all rail cars that have been released loaded at origin and have not been reported by the railway as unloaded at destination.</p> <p>Counts include all rail cars (hopper cars and boxcars) moving within a pipeline.</p>
Loads Not Moving	<p>Loaded rail cars for which the railways have not reported a movement event for 48 hours or more whether the rail car is at origin, enroute or at destination.</p>
Port Unloads	<p>Count of rail cars reported by railways as unloaded at the western port destinations of Vancouver, Prince Rupert and Thunder Bay.</p> <p>Unload counts include all rail cars (hopper cars and boxcars) unloaded by all receivers including major port terminals, transloaders and other receivers.</p>
Cars Arrived	<p>Count of rail cars reported as arrived at the destination railway terminal.</p>
Cars Received in Interchange	<p>Count of rail cars received in interchange by each railway within a destination railway terminal. Interchange activity is tracked for the Vancouver and Thunder Bay pipelines as applicable.</p>
Cars Delivered in Interchange	<p>Count of rail cars delivered in interchange by each railway within a destination railway terminal. Interchange activity is tracked for the Vancouver and Thunder Bay pipelines as applicable.</p>
Cars Placed for Unloading	<p>Count of rail cars reported by the railways as placed loaded at the receiver's facility for unloading.</p>
Loads on Wheels at Destination	<p>Count of rail cars that remain under load within the destination railway terminal including rail cars that have been reported as placed for unloading but not yet reported as unloaded.</p>
Waiting Placement for Unloading	<p>Count of rail cars that have been reported as arrived at the destination railway terminal but not reported as placed for unloading by the railway.</p> <p>For the Ports of Vancouver, Prince Rupert and Thunder Bay the count of rail cars waiting placement for unloading is categorized by age – i.e. the elapsed time from arrival at destination to the current report date.</p>