

SPEED READ

- Loads on wheels declined marginally overnight, reflecting an increase in CN volumes offset by lower CP volumes. On a net basis, volumes decreased due to reduced traffic in the Prince Rupert, Thunder Bay and E Canada corridors offset by increased traffic in the Vancouver and USA/MEX corridors.
- Network fluidity deteriorated overnight, led by an increase in idle car counts on both CN and CP by 7% and 36%, respectively. The total count of cars for 4+ days on both railways increased 28% overnight - now at 270 cars.
- Week 4 unloads concluded ahead of prior week's performance by nearly 100 unloads, marking an improvement in week over week performance at Vancouver offset by reduced unloads at Prince Rupert and Thunder Bay.

Loads on Wheels

- Loads on wheels declined slightly by 1% (-112) overnight due to higher traffic on CN offset by lower volumes on CP - combined total at 8,474 and 1% above the trailing 30-day average.
- On a net basis, the decline in loads on wheels displays lower traffic levels in the Prince Rupert, Thunder Bay and E Canada corridors offset by higher traffic levels in the Vancouver and USA/MEX corridors.
- CN volumes gained 2% (+87) overnight and have now increased for the third consecutive day, with higher volumes in the Vancouver and Thunder Bay corridors offset by reduced traffic in the Prince Rupert, E Canada and USA/MEX corridors. System wide CN loads on wheels now at 4,449 and 1% above the trailing 30-day average.
- CP volumes declined 5% (-206) overnight and have now declined for three consecutive days, driven by a decline in volumes in the Thunder Bay and Vancouver corridors offset by a rise in volumes in the USA/MEX and E Canada corridors. CP system wide loads on wheels now at 3,730 and 1% below the trailing 30-day average.
- Vancouver currently at 4,478, rose 2% (+68) overnight and have now increased for the fifth consecutive day, now 2% above the trailing 30-day average.
- The Prince Rupert pipeline now at 886, fell significantly by 15% (-156) overnight and 26% below the trailing 30 day-average.
- Thunder Bay volumes declined 2% (-31) overnight - now at 1,392 and 7% below the trailing 30-day average with 63% of traffic moving on CP.

Hopper Car Rationing

- No hopper car rationing was reported for either CN or CP in week 4 and none expected in week 5.

Loads Not Moving

- **The count of cars not moving for 48+ hours increased 25% (+246) overnight, reflecting higher counts on both CN and CP. Idle car counts currently at 1,244 and 23% below the trailing 30 day-average.**
- CN
 - **The count of idle cars for 48+ hours gained 7% (+29) overnight - now at 426 cars.**
 - The number of cars idle for 4+ days increased 17% (+15) overnight - now at 102 cars.
 - The count of cars not moving for 7+ days declined 4% (-1) overnight and have now declined for the third consecutive day - now at 27 cars, the lowest seen in the last 30 days.
 - Vancouver represents 26% of all idle cars.
 - In total 35% of all idle cars are dwelling at origin locations.
- CP
 - **CP idle car counts for 48+ hours increased 36% (+217) overnight - currently at 818 cars.**

- The number of cars idle for 4+ days gained 35% (+44) overnight - now at 168 cars.
- The number of cars idle for 7+ days declined significantly by 15% (-7) overnight and have now decreased for five consecutive days - currently at 39 cars, the lowest seen in the last 30 days.
- Vancouver accounts for 33% of all idle cars.
- In total 30% of all idle cars are dwelling at origin locations.

Port Performance

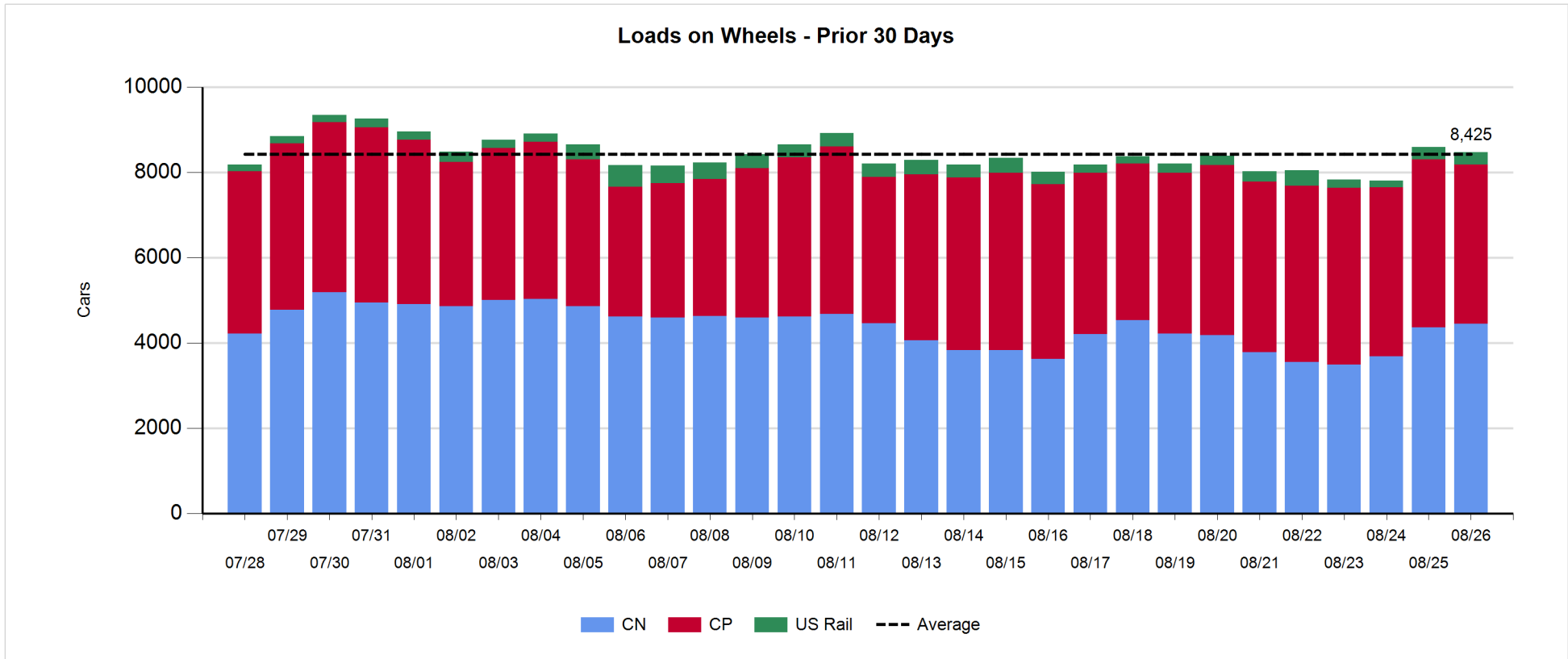
- CN and CP reported a total of 675 cars unloaded at the three major ports, now 23% below the trailing 30 day-average. Week 4 unloads concluded ahead of last week's pace by nearly 100 unloads, marking higher unloads at Vancouver offset by lower unloads at Prince Rupert and Thunder Bay.
- Vancouver
 - 395 unloads reported by CN and CP at the Port of Vancouver; CN - 94 and CP - 301. Week 4 unloads finished ahead of last week's performance by 250 unloads.
 - There are more than 900 cars on site at Vancouver with 450 cars arriving at the port in the last 24 hours.
 - CN and CP have more than 950 cars in British Columbia en route to Vancouver, with fewer than 400 Kamloops and west and 50% of traffic currently moving on CP.
- Prince Rupert
 - Prince Rupert reported 156 unloads, now behind last week's unloads by more than 100 unloads.
 - Loads on wheels now below 1,000 cars.
 - There are 500 cars west of Jasper - predominantly Prince George and west.
 - There are 6 cars on site at Prince Rupert with about 150 cars arriving at the port in the last 24 hours. Given the structure of the pipeline, there appears to be sufficient cars available to support unloads in the next few days.
- Thunder Bay
 - 124 unloads reported at Thunder Bay yesterday. Week 4 unloads finished behind last week's pace by around 50 unloads.
 - There are more than 650 cars on site at Thunder Bay with 100 cars arriving at the port in the prior 24 hours.
 - There are more than 250 cars en route to Thunder Bay from Winnipeg and east. Cars on hand and those en route should support unloads for the balance of the week.

Daily Loads on Wheels - 8/26/2018

	E Canada	Prince Rupert	Thunder Bay	USA/MEX	Vancouver	Total
CN	420	886	521	263	2,359	4,449
CP	307		871	451	2,101	3,730
Short Line	26				18	44
US Rail				251		251
	753	886	1,392	965	4,478	8,474

Change in Loads on Wheels - Prior 24 Hours

	E Canada	Prince Rupert	Thunder Bay	USA/MEX	Vancouver	Total
CN	-30	-156	93	-6	186	87
CP	1		-124	36	-119	-206
Short Line	0				1	1
US Rail				6		6
	-29	-156	-31	36	68	-112

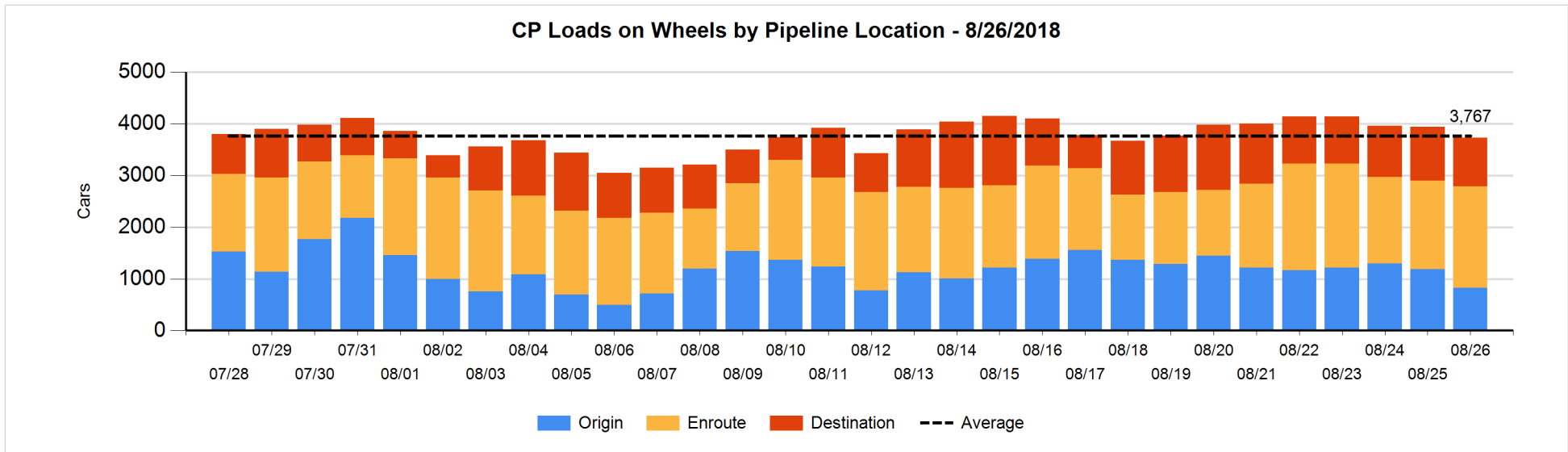
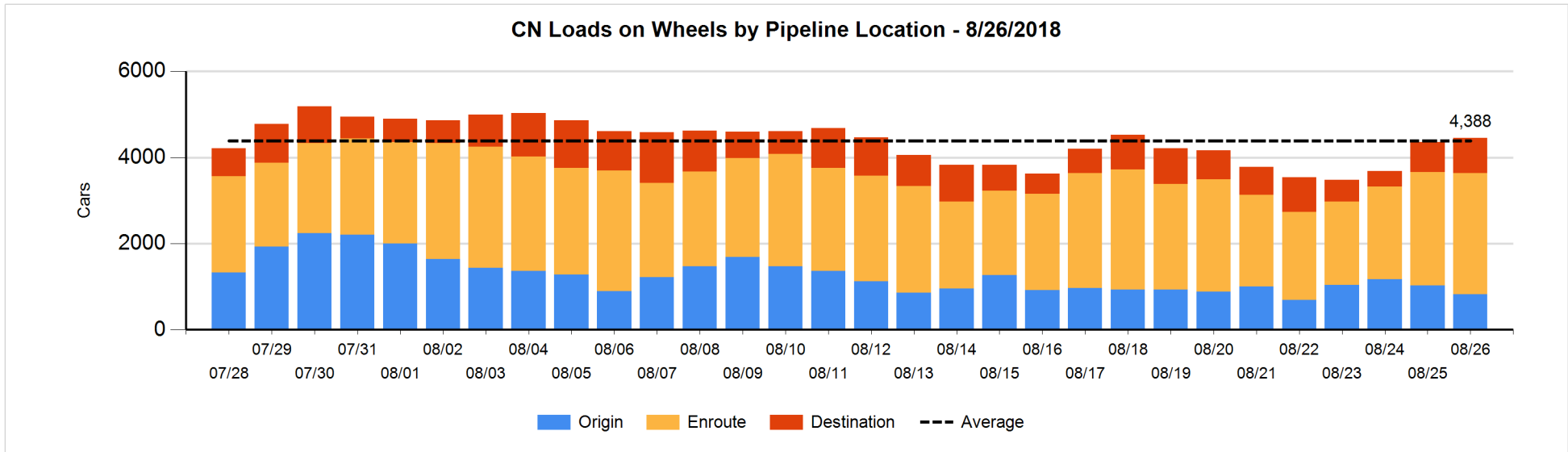


Daily Loads on Wheels By Pipeline Location - 8/26/2018

	E Canada	Prince Rupert	Thunder Bay	USA/MEX	Vancouver	Total
CN						
Origin	52	75	202	52	444	825
Enroute	198	805	131	198	1,477	2,809
Destination	170	6	188	13	438	815
	420	886	521	263	2,359	4,449
CP						
Origin	5		122	106	595	828
Enroute	302		276	345	1,036	1,959
Destination			473		470	943
	307		871	451	2,101	3,730
US Rail / Short Line						
Origin	1					1
Enroute	15			158		173
Destination	10			93	18	121
	26			251	18	295

Change in Daily Loads on Wheels By Pipeline Location - Prior 24 Hours

	E Canada	Prince Rupert	Thunder Bay	USA/MEX	Vancouver	Total
CN						
Origin	-13	-145	-9	-4	-28	-199
Enroute	-10	-11	2	0	198	179
Destination	-7	0	100	-2	16	107
	-30	-156	93	-6	186	87
CP						
Origin	-2		-112	-97	-148	-359
Enroute	3		112	133	-2	246
Destination			-124		31	-93
	1		-124	36	-119	-206
US Rail / Short Line						
Origin	0					0
Enroute	0			4		4
Destination	0			2	1	3
	0			6	1	7

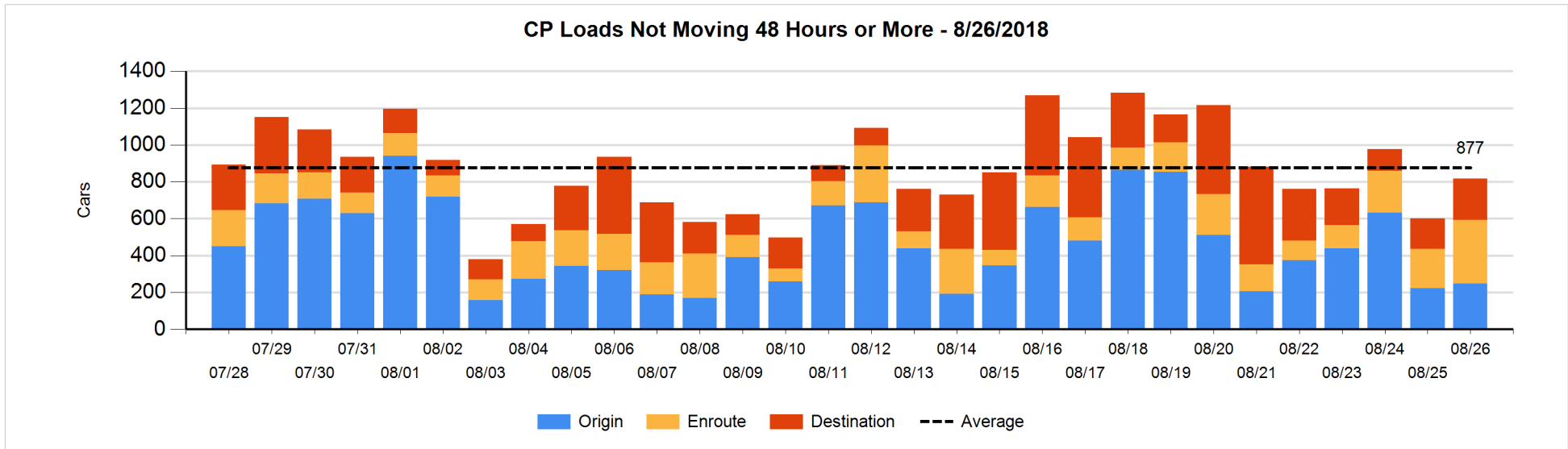
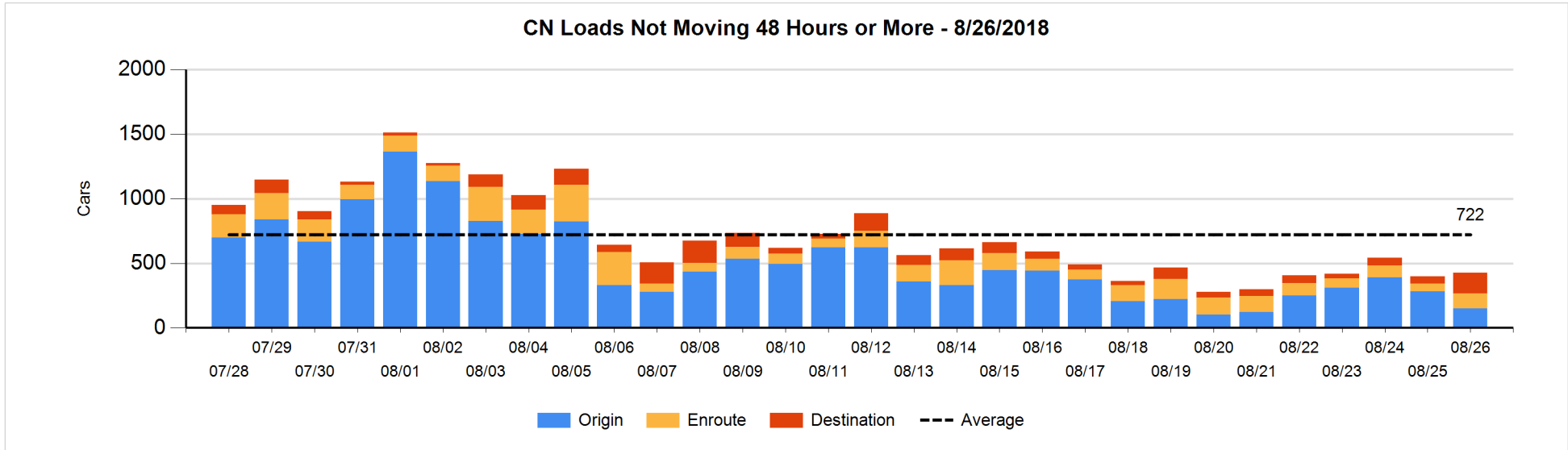


Loads Not Moving 48 Hours or More - 8/26/2018

	E Canada	Prince Rupert	Thunder Bay	USA/MEX	Vancouver	Total
CN						
Origin	52	75		3	18	148
Enroute	24	14	3	13	66	120
Destination	34	6	88	3	27	158
	110	95	91	19	111	426
CP						
Origin	5		12	45	186	248
Enroute	132		51	104	57	344
Destination			196		30	226
	137		259	149	273	818
US Rail / Short Line						
Origin	1					1
Enroute	14			25		39
Destination				34	12	46
	15			59	12	86

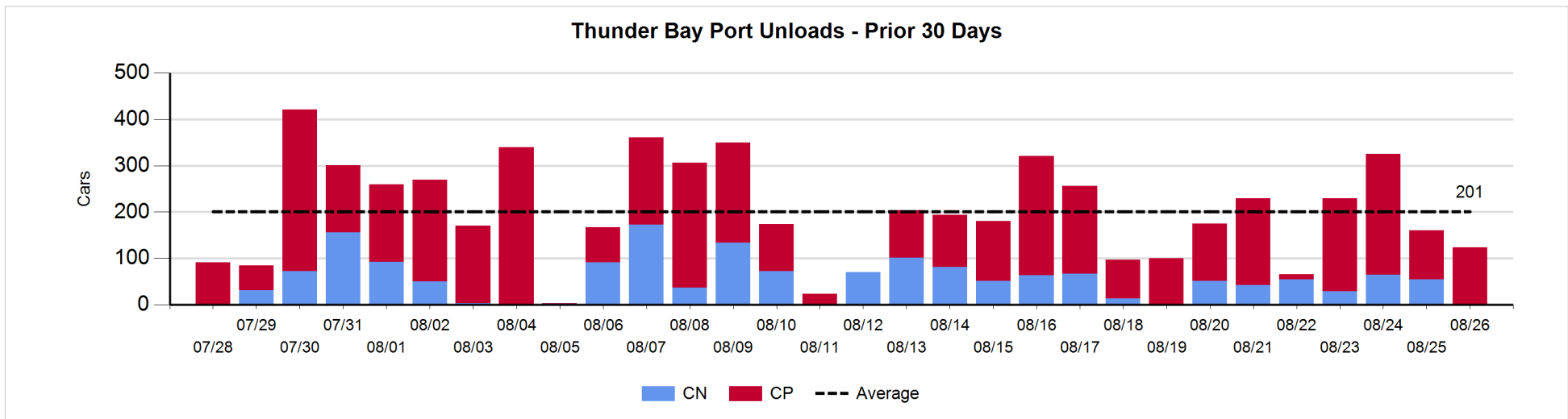
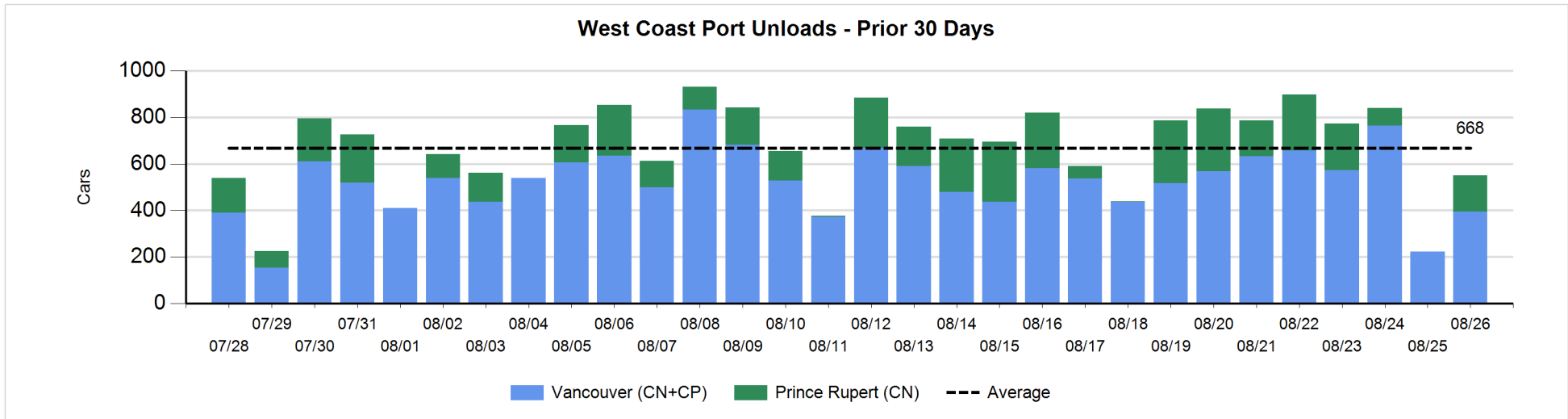
Change in Loads Not Moving 48 Hours or More - 8/26/2018

	E Canada	Prince Rupert	Thunder Bay	USA/MEX	Vancouver	Total
CN						
Origin	48	-19		1	-165	-135
Enroute	21	-13	0	9	45	62
Destination	4	0	86	0	12	102
	73	-32	86	10	-108	29
CP						
Origin	1		0	19	4	24
Enroute	89		5	34	4	132
Destination			93		-32	61
	90		98	53	-24	217
US Rail / Short Line						
Origin	1					1
Enroute	8			1		9
Destination				10	1	11
	9			11	1	21



Port Unloads - 8/26/2018

	Prince Rupert	Vancouver	West Coast Total	Thunder Bay	Total
CN	156	94	250		250
CP		301	301	124	425
	156	395	551	124	675



Port Terminal Status

Vancouver

Daily Activity for 8/26/2018

	Cars Arrived	Cars Received in Interchange	Cars Delivered in Interchange	Cars Placed for Unloading	Loads on Wheels at Destination As of 8/26/2018
CN	102	7		191	438
CP	338		7	332	470
SRY	1			6	18

Port Unloads

	08/26	08/25	Week To Date	Last Week
CN	94	8	1,779	2,107
CP	301	215	2,033	1,472
SRY		7	53	40

Age Profile of Loaded Cars Waiting Placement for Unloading

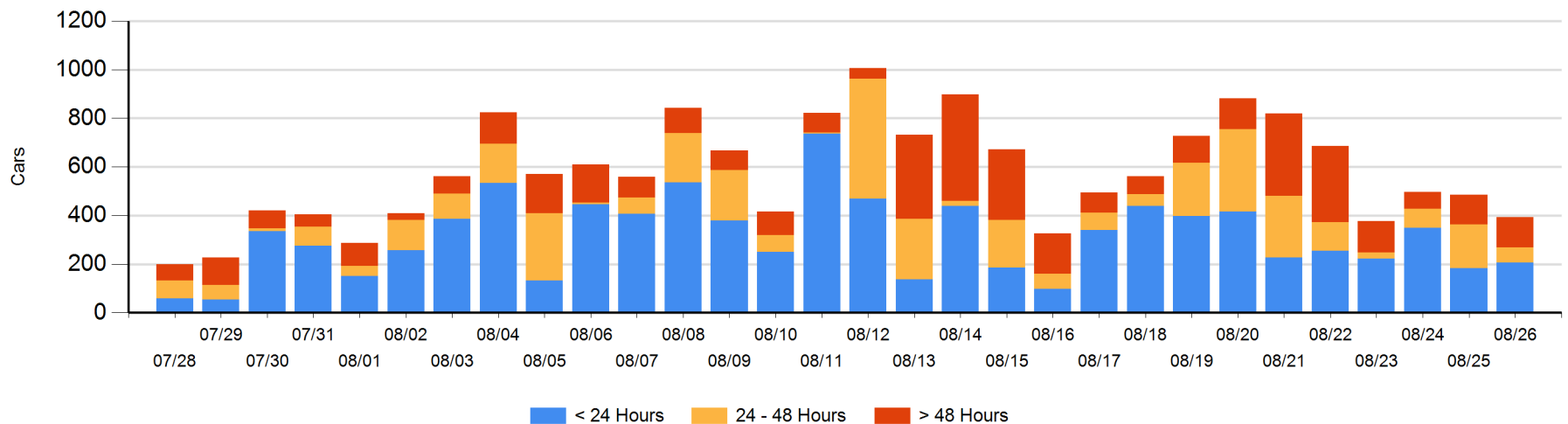
Today

	< 24 Hrs	24 - 48 Hrs	> 48-72 Hrs	> 72 Hrs	Total On Hand
CN	73	34	1	4	112
CP	134	27	84	35	280
SRY				1	1

Change in Last 24 Hours

	< 24 Hrs	24-48 Hrs	48 - 72 Hrs	> 72 Hrs
CN	-5	28	-33	-15
CP	29	-148	42	9
SRY				0

Loaded Cars on Hand Vancouver Waiting for Placement - Last 30 Days All Railways



Port Terminal Status

Prince Rupert

Daily Activity for 8/26/2018

	Cars Arrived	Cars Received in Interchange	Cars Delivered in Interchange	Cars Placed for Unloading	Loads on Wheels at Destination As of 8/26/2018
CN	156			156	6

Port Unloads

	08/26	08/25	Week To Date	Last Week
CN	156		1,096	1,219

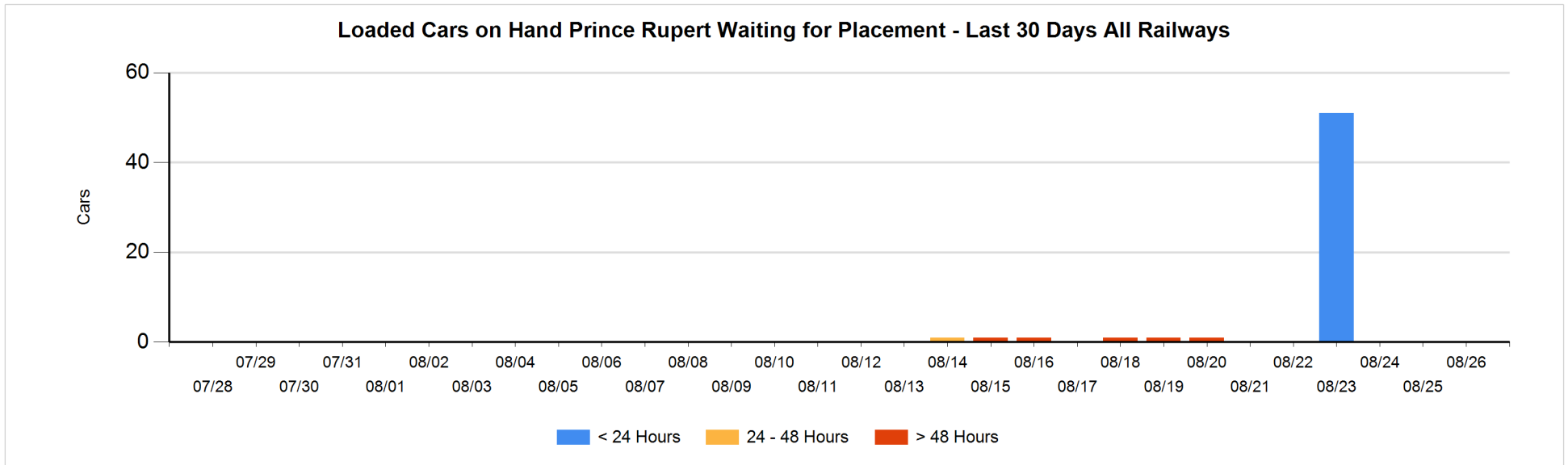
Age Profile of Loaded Cars Waiting Placement for Unloading

Today

	< 24 Hrs	24 - 48 Hrs	> 48-72 Hrs	> 72 Hrs	Total On Hand
CN					0

Change in Last 24 Hours

	< 24 Hrs	24-48 Hrs	48 - 72 Hrs	> 72 Hrs
CN				



Port Terminal Status

Thunder Bay

Daily Activity for 8/26/2018

	Cars Arrived	Cars Received in Interchange	Cars Delivered in Interchange	Cars Placed for Unloading	Loads on Wheels at Destination As of 8/26/2018
CN	100				188
CP				144	473

Port Unloads

	08/26	08/25	Week To Date	Last Week
CN		55	298	378
CP	124	105	1,011	974

Age Profile of Loaded Cars Waiting Placement for Unloading

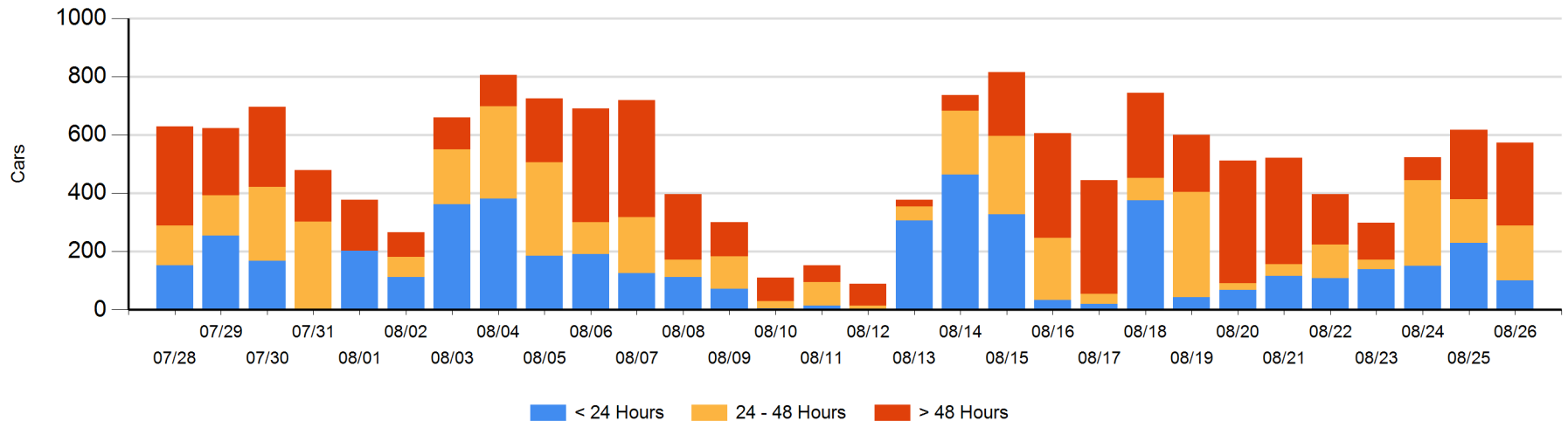
Today

	< 24 Hrs	24 - 48 Hrs	> 48-72 Hrs	> 72 Hrs	Total On Hand
CN	100			87	187
CP		189	46	151	386

Change in Last 24 Hours

	< 24 Hrs	24-48 Hrs	48 - 72 Hrs	> 72 Hrs
CN	100		-86	86
CP	-229	39	-94	140

Loaded Cars on Hand Thunder Bay Waiting for Placement - Last 30 Days All Railways



Measurement Definitions

Loads on Wheels	<p>Count of loaded rail cars including all rail cars that have been released loaded at origin and have not been reported by the railway as unloaded at destination.</p> <p>Counts include all rail cars (hopper cars and boxcars) moving within a pipeline.</p>
Loads Not Moving	<p>Loaded rail cars for which the railways have not reported a movement event for 48 hours or more whether the rail car is at origin, enroute or at destination.</p>
Port Unloads	<p>Count of rail cars reported by railways as unloaded at the western port destinations of Vancouver, Prince Rupert and Thunder Bay.</p> <p>Unload counts include all rail cars (hopper cars and boxcars) unloaded by all receivers including major port terminals, transloaders and other receivers.</p>
Cars Arrived	<p>Count of rail cars reported as arrived at the destination railway terminal.</p>
Cars Received in Interchange	<p>Count of rail cars received in interchange by each railway within a destination railway terminal. Interchange activity is tracked for the Vancouver and Thunder Bay pipelines as applicable.</p>
Cars Delivered in Interchange	<p>Count of rail cars delivered in interchange by each railway within a destination railway terminal. Interchange activity is tracked for the Vancouver and Thunder Bay pipelines as applicable.</p>
Cars Placed for Unloading	<p>Count of rail cars reported by the railways as placed loaded at the receiver's facility for unloading.</p>
Loads on Wheels at Destination	<p>Count of rail cars that remain under load within the destination railway terminal including rail cars that have been reported as placed for unloading but not yet reported as unloaded.</p>
Waiting Placement for Unloading	<p>Count of rail cars that have been reported as arrived at the destination railway terminal but not reported as placed for unloading by the railway.</p> <p>For the Ports of Vancouver, Prince Rupert and Thunder Bay the count of rail cars waiting placement for unloading is categorized by age – i.e. the elapsed time from arrival at destination to the current report date.</p>