

## SPEED READ

- Loads on wheels declined overnight, reflecting a decrease in both CN and CP volumes. On a net basis, volumes fell due to lower traffic levels across all corridors other than Vancouver.
- Network fluidity deteriorated overnight, led by an increase in idle car counts on both CN and CP by 7% and 3%, respectively. The total count of cars for 4+ days on both railways declined significantly by 42% overnight - presently at 208 cars, the lowest seen in the last 30 days.
- Three days in Week 5 unloads now ahead of prior week's performance by about 350 unloads, marking an improvement in week over week performance at Thunder Bay and Vancouver offset by lower unloads at Prince Rupert.

---

## Loads on Wheels

- Loads on wheels fell 4% (-290) overnight and have now declined for the fourth consecutive day, due to lower traffic on both CN and CP - combined total at 7,733, the lowest seen in the last 30 days, and 8% below the trailing 30-day average.
- On a net basis, the decline in loads on wheels shows reduced volumes across all corridors other than Vancouver.
- CN volumes decreased 6% (-222) overnight and have now decreased for three consecutive days, with lower traffic levels across all corridors other than Vancouver. System wide CN loads on wheels currently at 3,475, the lowest seen in the last 30 days, and 20% below the trailing 30-day average.
- CP volumes declined slightly by 2% (-80) overnight, driven by a decrease in traffic across all corridors other than Vancouver. CP system wide loads on wheels currently at 4,032 and 7% above the trailing 30-day average.
- Vancouver currently at 4,550, increased 4% (+177) overnight and 4% above the trailing 30-day average.
- The Prince Rupert pipeline presently at 763, the lowest seen in the last 30 days, declined significantly by 13% (-114) overnight and 34% below the trailing 30 day-average.
- Thunder Bay volumes decreased significantly by 20% (-254) overnight - currently at 993 and 31% below the trailing 30-day average with 66% of traffic moving on CP.

## Hopper Car Rationing

- No hopper car rationing was reported for either CN or CP in week 4 and none expected in week 5.

## Loads Not Moving

- **The count of cars not moving for 48+ hours increased 4% (+43) overnight, reflecting higher counts on both CN and CP. Idle car counts presently at 1,085 and 29% below the trailing 30 day-average.**
- CN
  - **The count of idle cars for 48+ hours increased 7% (+18) overnight - currently at 279 cars.**
  - The number of cars idle for 4+ days declined significantly by 45% (-53) overnight - presently at 64 cars, the lowest seen in the last 30 days.
  - The count of cars not moving for 7+ days rose 37% (+10) overnight - presently at 37 cars.
  - Vancouver represents 69% of all idle cars.
  - In total 22% of all idle cars are dwelling at origin locations.
- CP
  - **CP idle car counts for 48+ hours increased 3% (+25) overnight - presently at 806 cars.**
  - The number of cars idle for 4+ days decreased significantly by 40% (-97) overnight - currently at 144 cars.

- The number of cars idle for 7+ days declined for the eighth consecutive day, down 15% (-4) overnight - presently at 22 cars, the lowest seen in the last 30 days.
- Vancouver accounts for 71% of all idle cars.
- In total 71% of all idle cars are dwelling at origin locations.

### **Port Performance**

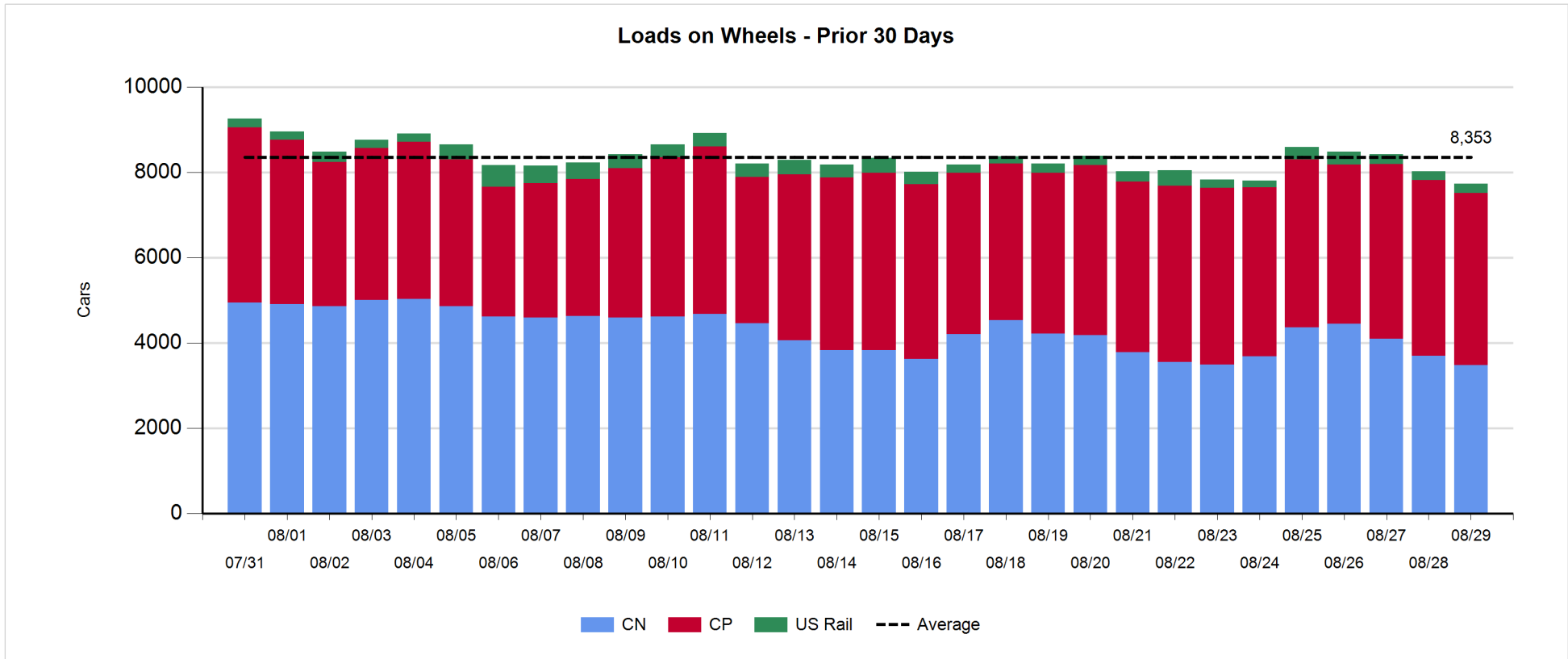
- CN and CP reported a total of 1,193 cars unloaded at the three major ports, now 32% above the trailing 30-day average. Three days in Week 5 unloads are tracking ahead of last week's pace by about 350 unloads, marking higher unloads at Thunder Bay and Vancouver offset by reduced unloads at Prince Rupert.
- Vancouver
  - 693 unloads reported by CN and CP at the Port of Vancouver; CN - 275 and CP - 418. Three days in Week 5 unloads are tracking ahead of last week's performance by more than 100 unloads.
  - There are 1,300 cars on site at Vancouver with more than 900 cars arriving at the port in the last 24 hours.
  - CN and CP have more than 600 cars in British Columbia en route to Vancouver, with nearly 100 Kamloops and west and 62% of traffic currently moving on CP.
- Prince Rupert
  - Prince Rupert reported 118 unloads, now behind last week's unloads after three days by less than 250 unloads.
  - Loads on wheels now below 1,000 cars.
  - There are more than 150 cars west of Jasper en route to Prince Rupert - less than half are located at Prince George and west.
  - There are more than 150 cars on site at Prince Rupert with fewer than 200 cars arriving at the port in the last 24 hours. Given the structure of the pipeline, there appears to be sufficient cars available to support unloads in the next few days.
- Thunder Bay
  - 382 unloads, the highest seen in the last 30 days, was reported at Thunder Bay yesterday. Three days in Week 5 unloads are tracking ahead of last week's pace by more than 450 unloads.
  - There are 350 cars on site at Thunder Bay with nearly 150 cars arriving at the port in the prior 24 hours.
  - There are 400 cars en route to Thunder Bay from Winnipeg and east. Cars on hand and those en route should support unloads for the balance of the week.

**Daily Loads on Wheels - 8/29/2018**

	E Canada	Prince Rupert	Thunder Bay	USA/MEX	Vancouver	Total
CN	250	763	336	234	1,892	3,475
CP	388		657	352	2,635	4,032
Short Line	4				23	27
US Rail				199		199
	642	763	993	785	4,550	7,733

**Change in Loads on Wheels - Prior 24 Hours**

	E Canada	Prince Rupert	Thunder Bay	USA/MEX	Vancouver	Total
CN	-18	-114	-166	-28	104	-222
CP	-8		-88	-41	57	-80
Short Line	-1				16	15
US Rail				-3		-3
	-27	-114	-254	-72	177	-290

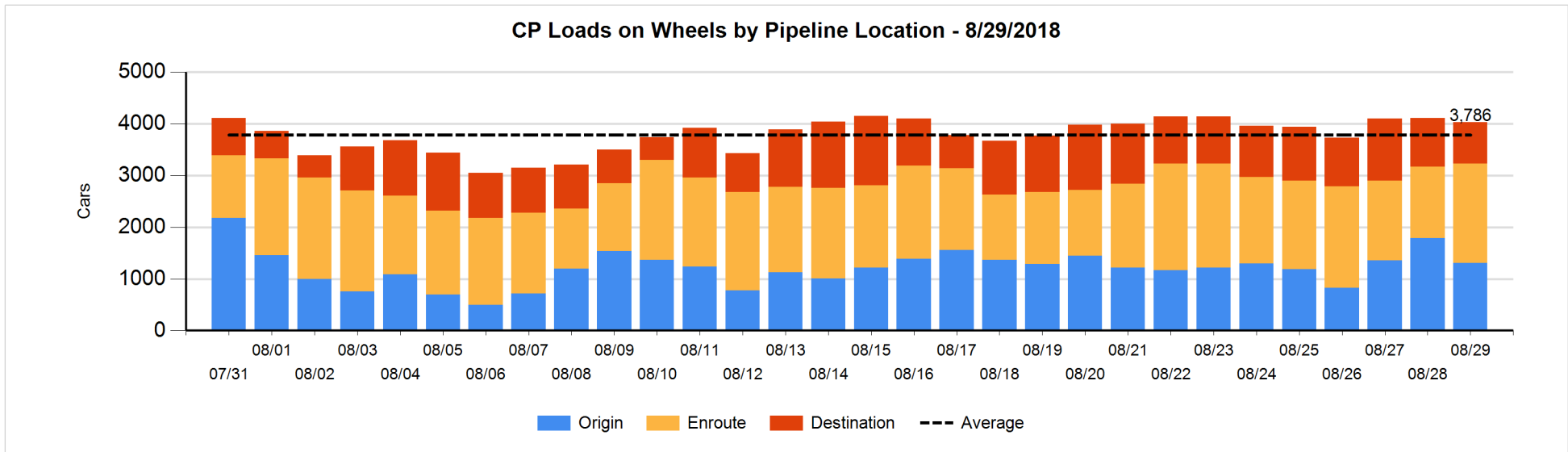
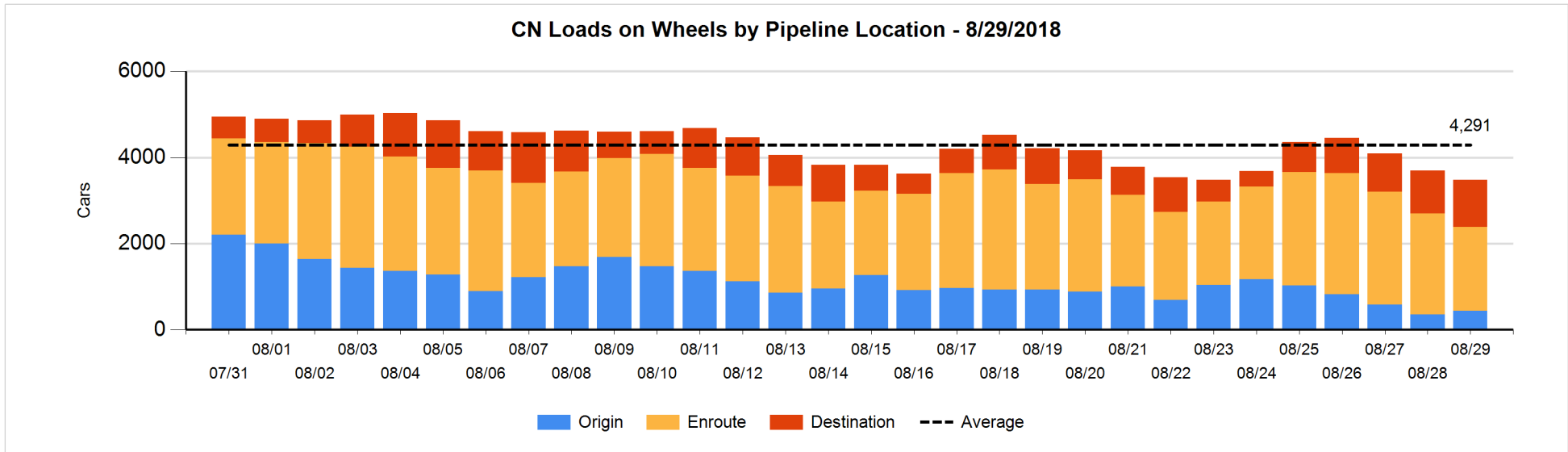


**Daily Loads on Wheels By Pipeline Location - 8/29/2018**

	E Canada	Prince Rupert	Thunder Bay	USA/MEX	Vancouver	Total
CN						
Origin	10	3		27	393	433
Enroute	168	595	117	172	895	1,947
Destination	72	165	219	35	604	1,095
	250	763	336	234	1,892	3,475
CP						
Origin	4		135	61	1,103	1,303
Enroute	384		389	291	865	1,929
Destination			133		667	800
	388		657	352	2,635	4,032
US Rail / Short Line						
Origin						
Enroute	1			109		110
Destination	3			90	23	116
	4			199	23	226

**Change in Daily Loads on Wheels By Pipeline Location - Prior 24 Hours**

	E Canada	Prince Rupert	Thunder Bay	USA/MEX	Vancouver	Total
CN						
Origin	0	-119	-109	19	285	76
Enroute	-24	-55	-19	-6	-289	-393
Destination	6	60	-38	-41	108	95
	-18	-114	-166	-28	104	-222
CP						
Origin	-103		-133	-26	-218	-480
Enroute	95		244	-2	202	539
Destination			-199	-13	73	-139
	-8		-88	-41	57	-80
US Rail / Short Line						
Origin						
Enroute	-4			14		10
Destination	3			-17	16	2
	-1			-3	16	12

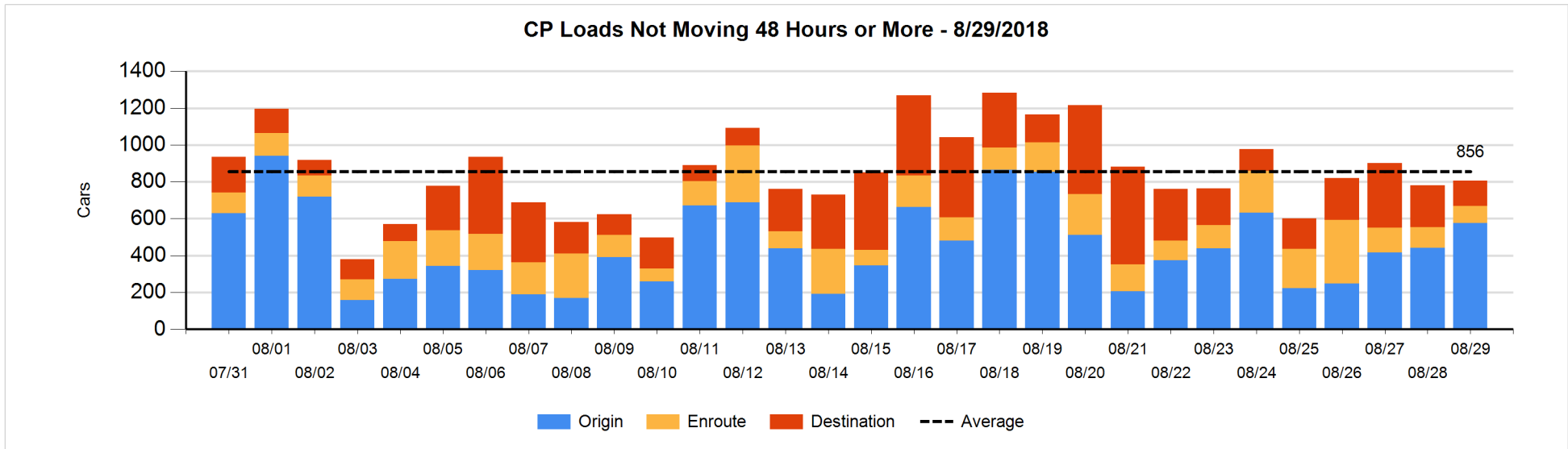
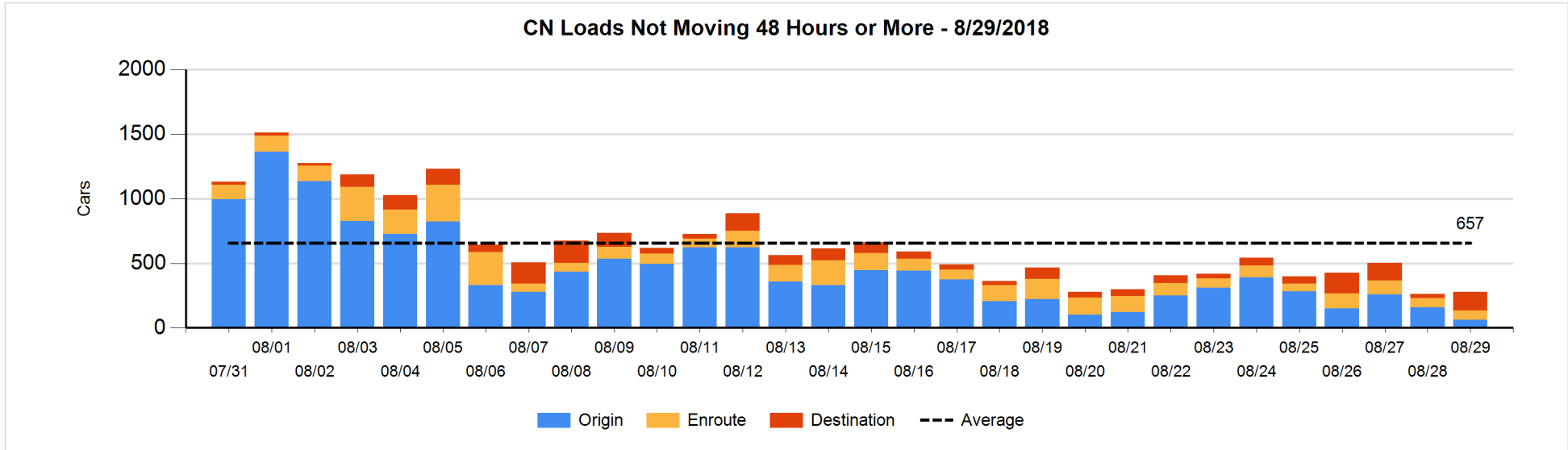


**Loads Not Moving 48 Hours or More - 8/29/2018**

	E Canada	Prince Rupert	Thunder Bay	USA/MEX	Vancouver	Total
<b>CN</b>						
Origin	5			7	49	61
Enroute	15	16		15	27	73
Destination	1	14	13	1	116	145
	21	30	13	23	192	279
<b>CP</b>						
Origin	2		4	60	510	576
Enroute	3		13	55	22	93
Destination			98		39	137
	5		115	115	571	806
<b>US Rail / Short Line</b>						
Origin						
Enroute	1			46		47
Destination				41	2	43
	1			87	2	90

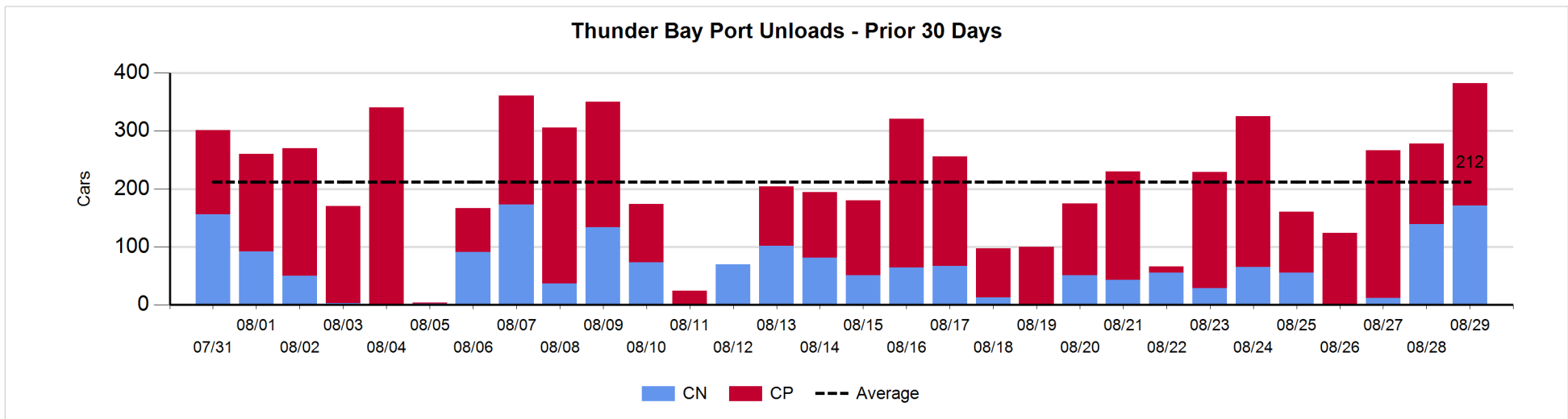
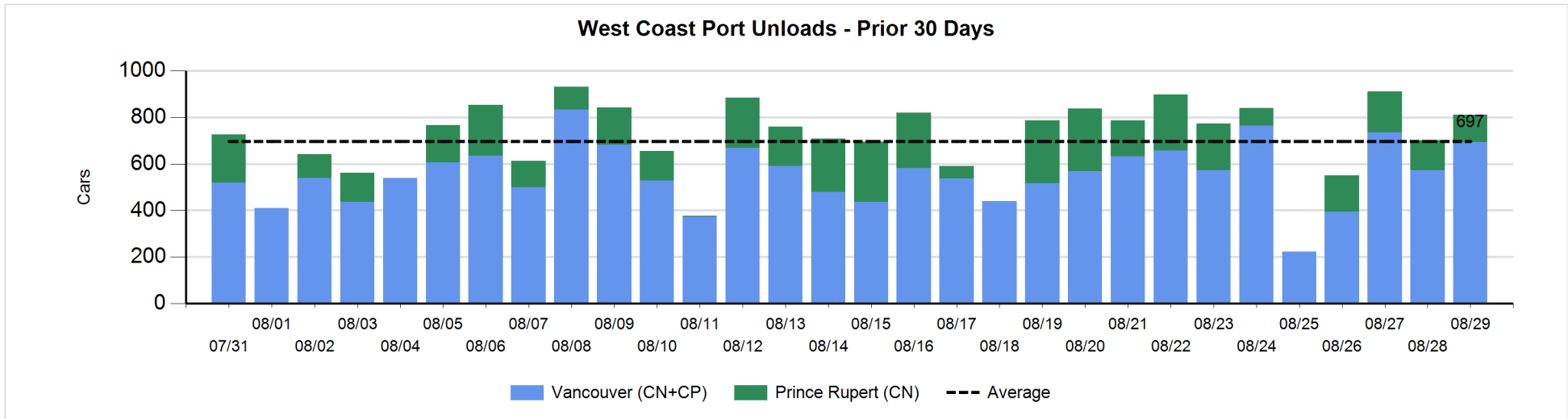
**Change in Loads Not Moving 48 Hours or More - 8/29/2018**

	E Canada	Prince Rupert	Thunder Bay	USA/MEX	Vancouver	Total
<b>CN</b>						
Origin	1	-24	-109	4	31	-97
Enroute	5	-13		2	6	0
Destination	-6	8	11	-1	103	115
	0	-29	-98	5	140	18
<b>CP</b>						
Origin	-3		4	-23	156	134
Enroute	0		-7	-7	-6	-20
Destination			-94		5	-89
	-3		-97	-30	155	25
<b>US Rail / Short Line</b>						
Origin						
Enroute	-3			26		23
Destination				13	1	14
	-3			39	1	37



**Port Unloads - 8/29/2018**

	Prince Rupert	Vancouver	West Coast Total	Thunder Bay	Total
CN	118	275	393	171	564
CP		418	418	211	629
	118	693	811	382	1,193





**Port Terminal Status**

**Vancouver**

Daily Activity for 8/29/2018

	Cars Arrived	Cars Received in Interchange	Cars Delivered in Interchange	Cars Placed for Unloading	Loads on Wheels at Destination As of 8/29/2018
CN	312	120	209	250	604
CP	600	192	122	329	667
SRY	1	19		1	23

**Port Unloads**

	08/29	08/28	Week To Date	Last Week
CN	275	281	927	1,779
CP	418	292	1,073	2,033
SRY	6	4	17	53

**Age Profile of Loaded Cars Waiting Placement for Unloading**

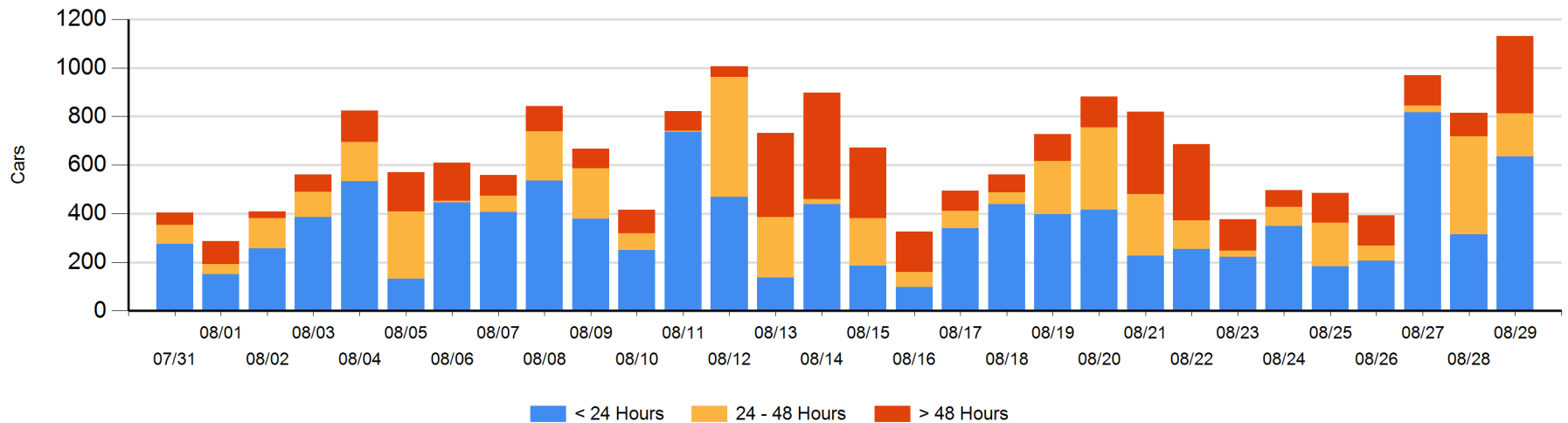
**Today**

	< 24 Hrs	24 - 48 Hrs	> 48-72 Hrs	> 72 Hrs	Total On Hand
CN	143	149	126	43	461
CP	491	29	107	42	669
SRY	1				1

**Change in Last 24 Hours**

	< 24 Hrs	24-48 Hrs	48 - 72 Hrs	> 72 Hrs
CN	-92	-4	106	17
CP	411	-220	102	-5
SRY	1			

**Loaded Cars on Hand Vancouver Waiting for Placement - Last 30 Days All Railways**



**Port Terminal Status**

**Prince Rupert**

Daily Activity for 8/29/2018

	Cars Arrived	Cars Received in Interchange	Cars Delivered in Interchange	Cars Placed for Unloading	Loads on Wheels at Destination As of 8/29/2018
CN	178			178	165

**Port Unloads**

	08/29	08/28	Week To Date	Last Week
CN	118	129	425	1,096

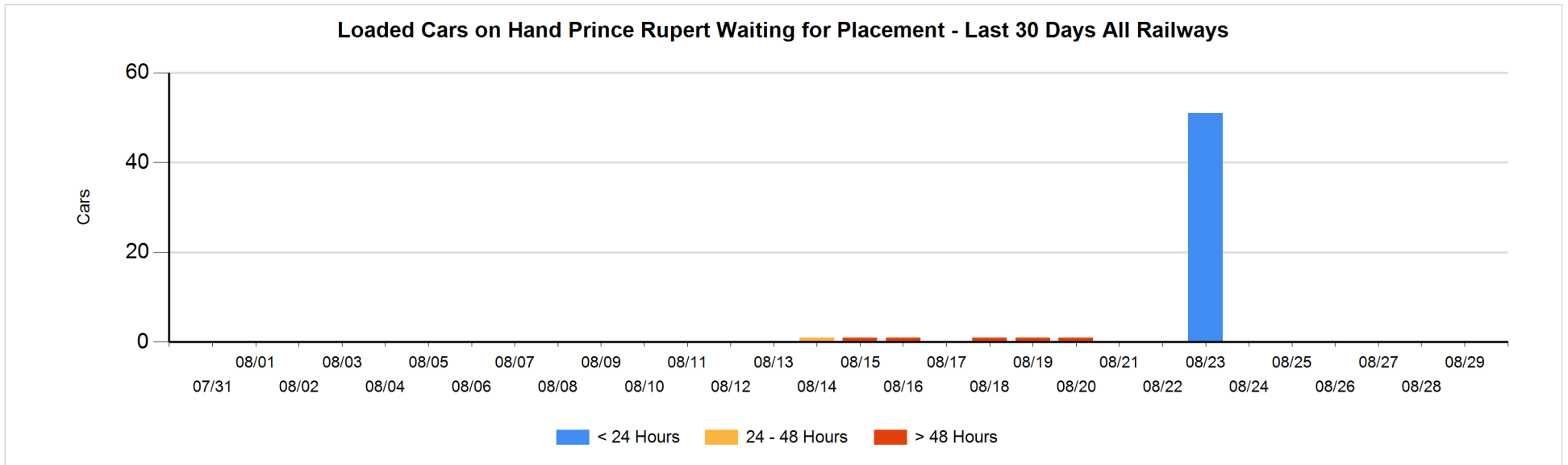
**Age Profile of Loaded Cars Waiting Placement for Unloading**

**Today**

	< 24 Hrs	24 - 48 Hrs	> 48-72 Hrs	> 72 Hrs	Total On Hand
CN					0

**Change in Last 24 Hours**

	< 24 Hrs	24-48 Hrs	48 - 72 Hrs	> 72 Hrs
CN				



**Port Terminal Status**

**Thunder Bay**

Daily Activity for 8/29/2018

	Cars Arrived	Cars Received in Interchange	Cars Delivered in Interchange	Cars Placed for Unloading	Loads on Wheels at Destination As of 8/29/2018
CN	133			107	219
CP	12			172	133

**Port Unloads**

	08/29	08/28	Week To Date	Last Week
CN	171	139	322	298
CP	211	139	604	1,011

**Age Profile of Loaded Cars Waiting Placement for Unloading**

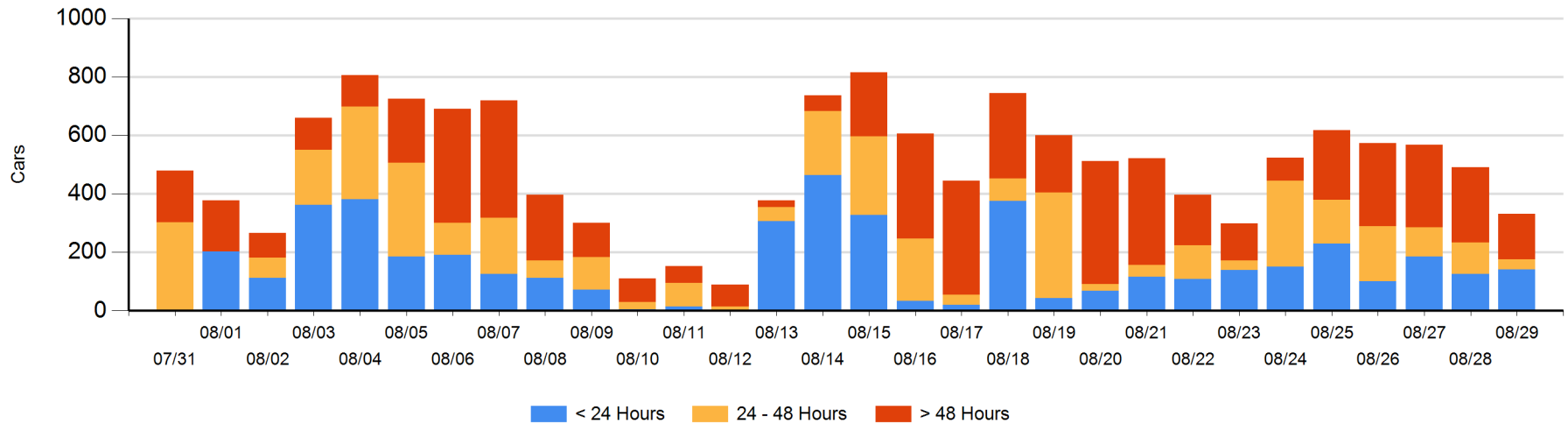
**Today**

	< 24 Hrs	24 - 48 Hrs	> 48-72 Hrs	> 72 Hrs	Total On Hand
CN	133	34			167
CP	8		74	83	165

**Change in Last 24 Hours**

	< 24 Hrs	24-48 Hrs	48 - 72 Hrs	> 72 Hrs
CN	40	34	-48	
CP	-24	-108	74	-127

**Loaded Cars on Hand Thunder Bay Waiting for Placement - Last 30 Days All Railways**



## Measurement Definitions

Loads on Wheels	<p>Count of loaded rail cars including all rail cars that have been released loaded at origin and have not been reported by the railway as unloaded at destination.</p> <p>Counts include all rail cars (hopper cars and boxcars) moving within a pipeline.</p>
Loads Not Moving	<p>Loaded rail cars for which the railways have not reported a movement event for 48 hours or more whether the rail car is at origin, enroute or at destination.</p>
Port Unloads	<p>Count of rail cars reported by railways as unloaded at the western port destinations of Vancouver, Prince Rupert and Thunder Bay.</p> <p>Unload counts include all rail cars (hopper cars and boxcars) unloaded by all receivers including major port terminals, transloaders and other receivers.</p>
Cars Arrived	<p>Count of rail cars reported as arrived at the destination railway terminal.</p>
Cars Received in Interchange	<p>Count of rail cars received in interchange by each railway within a destination railway terminal. Interchange activity is tracked for the Vancouver and Thunder Bay pipelines as applicable.</p>
Cars Delivered in Interchange	<p>Count of rail cars delivered in interchange by each railway within a destination railway terminal. Interchange activity is tracked for the Vancouver and Thunder Bay pipelines as applicable.</p>
Cars Placed for Unloading	<p>Count of rail cars reported by the railways as placed loaded at the receiver's facility for unloading.</p>
Loads on Wheels at Destination	<p>Count of rail cars that remain under load within the destination railway terminal including rail cars that have been reported as placed for unloading but not yet reported as unloaded.</p>
Waiting Placement for Unloading	<p>Count of rail cars that have been reported as arrived at the destination railway terminal but not reported as placed for unloading by the railway.</p> <p>For the Ports of Vancouver, Prince Rupert and Thunder Bay the count of rail cars waiting placement for unloading is categorized by age – i.e. the elapsed time from arrival at destination to the current report date.</p>