

SPEED READ

- Loads on wheels increased overnight, marking a rise in both CN and CP volumes. On a net basis, volumes rose due to higher traffic levels across all corridors other than Vancouver.
- Network fluidity improved overnight, led by an increase in idle car counts on CN by 46% offset by a decline in idle car counts on CP by 16%. The total count of cars for 4+ days on both railways gained 15% overnight - presently at 650 cars.
- Week 6 unloads concluded ahead of prior week's performance by more than 50 unloads, reflecting an improvement in week over week performance at Prince Rupert offset by reduced unloads at Thunder Bay and Vancouver.

Loads on Wheels

- Loads on wheels increased 9% (+809) overnight and have now increased for the third consecutive day, due to higher volumes on both CN and CP - combined total at 10,162, the highest seen in the last 30 days, and 21% above the trailing 30-day average.
- On a net basis, the increase in loads on wheels indicates higher traffic across all corridors other than Vancouver.
- CN volumes increased significantly by 14% (+609) overnight and have now increased for three consecutive days, with higher volumes across all corridors other than Vancouver. System wide CN loads on wheels presently at 5,077, the highest seen in the last 30 days, and 25% above the trailing 30-day average.
- CP volumes gained 3% (+149) overnight, driven by a rise in traffic levels across all corridors - Vancouver, Thunder Bay, USA/MEX and E. Canada. CP system wide loads on wheels presently at 4,732 and 16% above the trailing 30-day average.
- Vancouver presently at 5,183, fell slightly by 1% (-53) overnight and 17% above the trailing 30-day average.
- The Prince Rupert pipeline presently at 1,299, increased for the third consecutive day, up 41% (+376) overnight, and 18% above the trailing 30-day average.
- Thunder Bay volumes rose significantly by 15% (+262) overnight - presently at 2,053, the highest seen in the last 30 days, and 38% above the trailing 30-day average with 61% of traffic moving on CP.

Hopper Car Rationing

- No hopper car rationing was reported for either CN or CP in week 6. For the current grain week (7), CN has rationed 100 hopper car orders.

Loads Not Moving

- **The count of cars not moving for 48+ hours decreased 2% (-25) overnight, marking higher counts on CN offset by lower counts on CP. Idle car counts presently at 1,612 and 22% above the trailing 30-day average.**
- CN
 - **The count of idle cars for 48+ hours increased significantly by 46% (+178) overnight - now at 563 cars.**
 - The number of cars idle for 4+ days surged by 104% (+115) overnight - presently at 226 cars.
 - The count of cars not moving for 7+ days increased 12% (+9) overnight - presently at 86 cars.
 - Vancouver represents 57% of all idle cars.
 - In total 24% of all idle cars are dwelling at origin locations.
- CP
 - **CP idle car counts for 48+ hours fell 16% (-203) overnight - presently at 1,049 cars.**
 - The number of cars idle for 4+ days decreased 6% (-29) overnight - presently at 424 cars.

- The number of cars idle for 7+ days declined 16% (-7) overnight and have now decreased for three consecutive days - now at 38 cars.
- Vancouver accounts for 56% of all idle cars.
- In total 38% of all idle cars are dwelling at origin locations.

Port Performance

- CN and CP reported a total of 763 cars unloaded at the three major ports, now 18% below the trailing 30 day-average. Week 6 unloads concluded ahead of last week's pace by more than 50 unloads, marking higher unloads at Prince Rupert offset by lower unloads at Thunder Bay and Vancouver.
- Vancouver
 - 687 unloads reported by CN and CP at the Port of Vancouver; CN - 271 and CP - 416. Week 6 unloads finished behind last week's performance by more than 150 unloads.
 - There are nearly 1,300 cars on site at Vancouver with about 650 cars arriving at the port in the last 24 hours.
 - CN and CP have less than 1,200 cars in British Columbia en route to Vancouver, with more than 550 Kamloops and west and 64% of traffic currently moving on CN.
- Prince Rupert
 - Prince Rupert reported zero unloads, ended ahead of last week's unloads by 400 unloads.
 - Loads on wheels now above 1,000 cars - presently at 1,299 cars.
 - There are 150 cars west of Jasper en route to Prince Rupert.
 - There are fewer than 400 cars on site at Prince Rupert with 250 cars arriving at the port in the last 24 hours. Given the structure of the pipeline, there appears to be sufficient cars available to support unloads in the next few days.
- Thunder Bay
 - 76 unloads reported at Thunder Bay yesterday. Week 6 unloads finished behind last week's pace by more than than 150 unloads.
 - There are more than 900 cars on site at Thunder Bay with about 350 cars arriving at the port in the prior 24 hours.
 - There are nearly 650 cars en route to Thunder Bay from Winnipeg and east. Cars on hand and those en route should support unloads for the balance of the week.

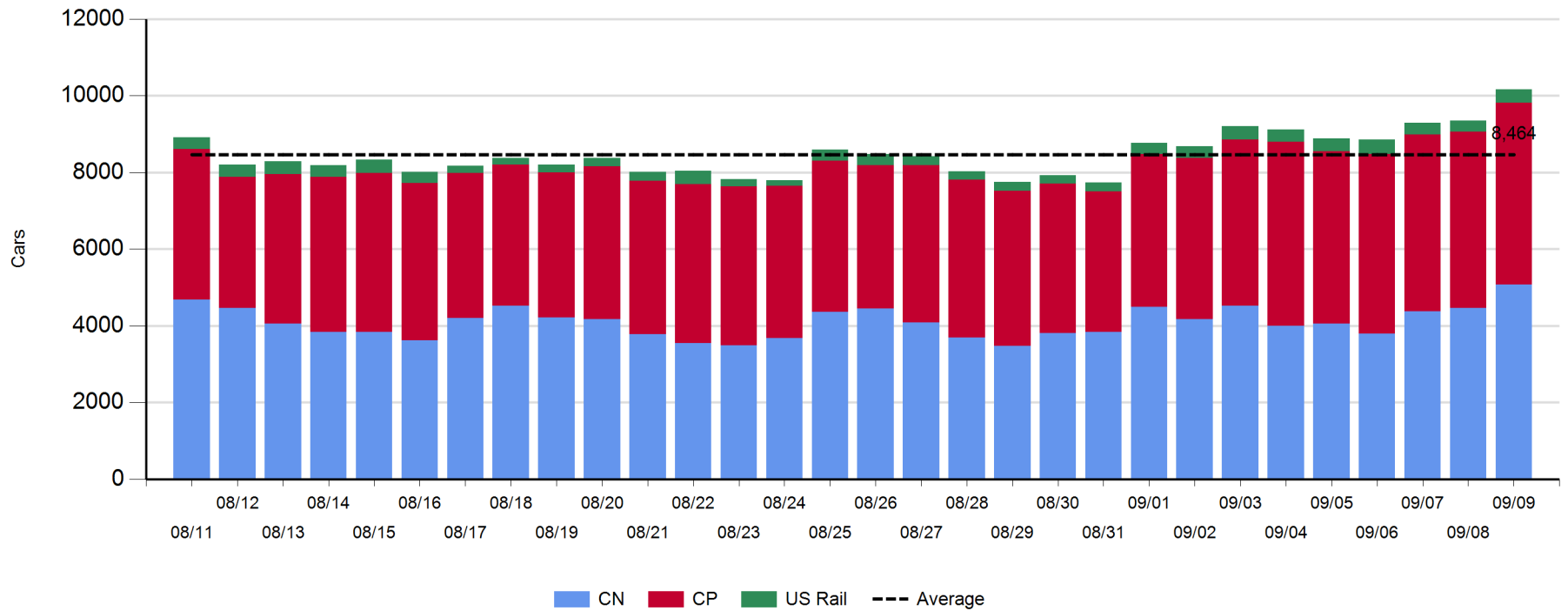
Daily Loads on Wheels - 9/9/2018

	E Canada	Prince Rupert	Thunder Bay	USA/MEX	Vancouver	Total
CN	414	1,299	808	225	2,331	5,077
CP	186		1,245	482	2,819	4,732
Short Line	12				33	45
US Rail				308		308
	612	1,299	2,053	1,015	5,183	10,162

Change in Loads on Wheels - Prior 24 Hours

	E Canada	Prince Rupert	Thunder Bay	USA/MEX	Vancouver	Total
CN	87	376	220	19	-93	609
CP	55		42	15	37	149
Short Line	10				3	13
US Rail				38		38
	152	376	262	72	-53	809

Loads on Wheels - Prior 30 Days

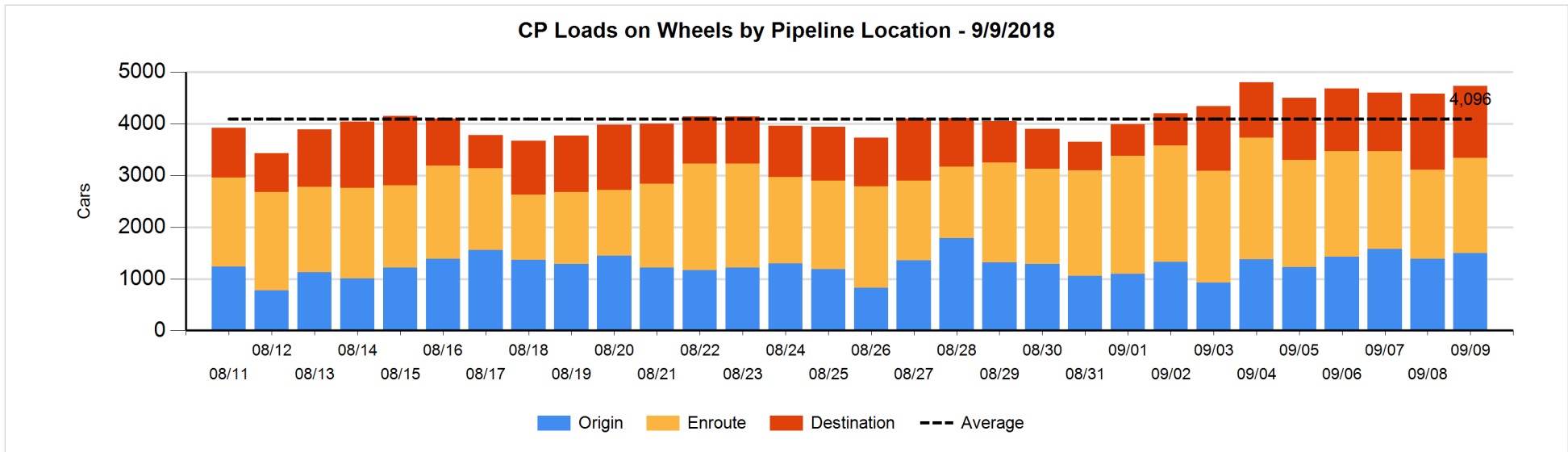
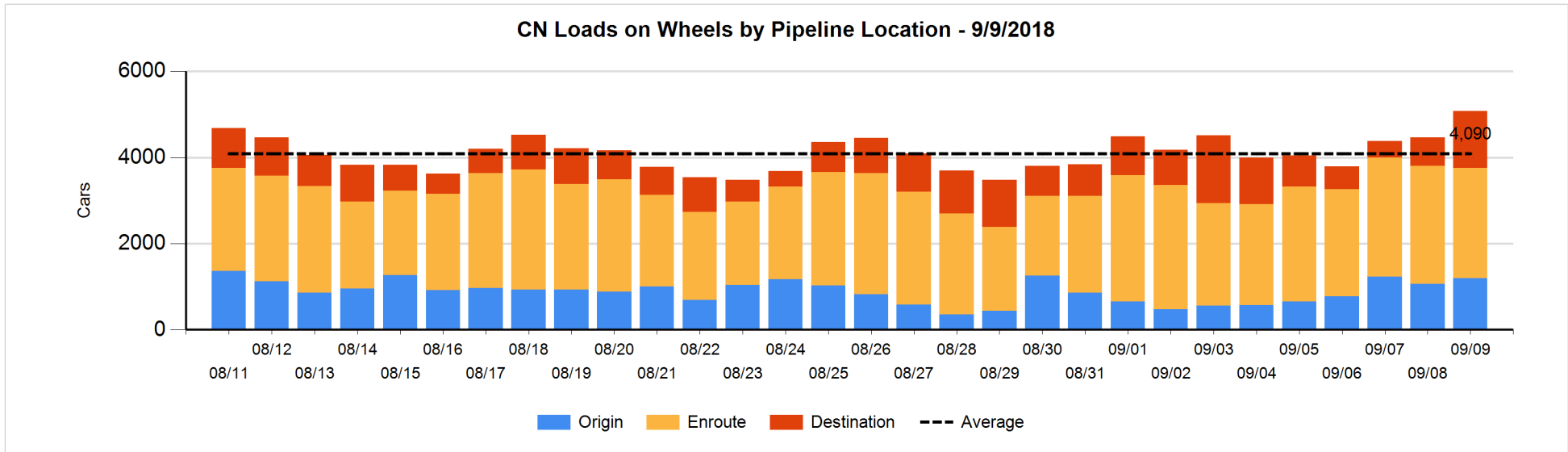


Daily Loads on Wheels By Pipeline Location - 9/9/2018

	E Canada	Prince Rupert	Thunder Bay	USA/MEX	Vancouver	Total
CN						
Origin	100	424	341	29	298	1,192
Enroute	183	500	211	179	1,489	2,562
Destination	131	375	256	17	544	1,323
	414	1,299	808	225	2,331	5,077
CP						
Origin	105		153	109	1,131	1,498
Enroute	81		427	346	985	1,839
Destination			665	27	703	1,395
	186		1,245	482	2,819	4,732
US Rail / Short Line						
Origin						
Enroute	2			212		214
Destination	10			96	33	139
	12			308	33	353

Change in Daily Loads on Wheels By Pipeline Location - Prior 24 Hours

	E Canada	Prince Rupert	Thunder Bay	USA/MEX	Vancouver	Total
CN						
Origin	100	-53	185	19	-126	125
Enroute	-110	176	-51	-13	-179	-177
Destination	97	253	86	13	212	661
	87	376	220	19	-93	609
CP						
Origin	56		-34	0	89	111
Enroute	-1		-104	33	192	120
Destination			180	-18	-244	-82
	55		42	15	37	149
US Rail / Short Line						
Origin						
Enroute	0			26		26
Destination	10			12	3	25
	10			38	3	51

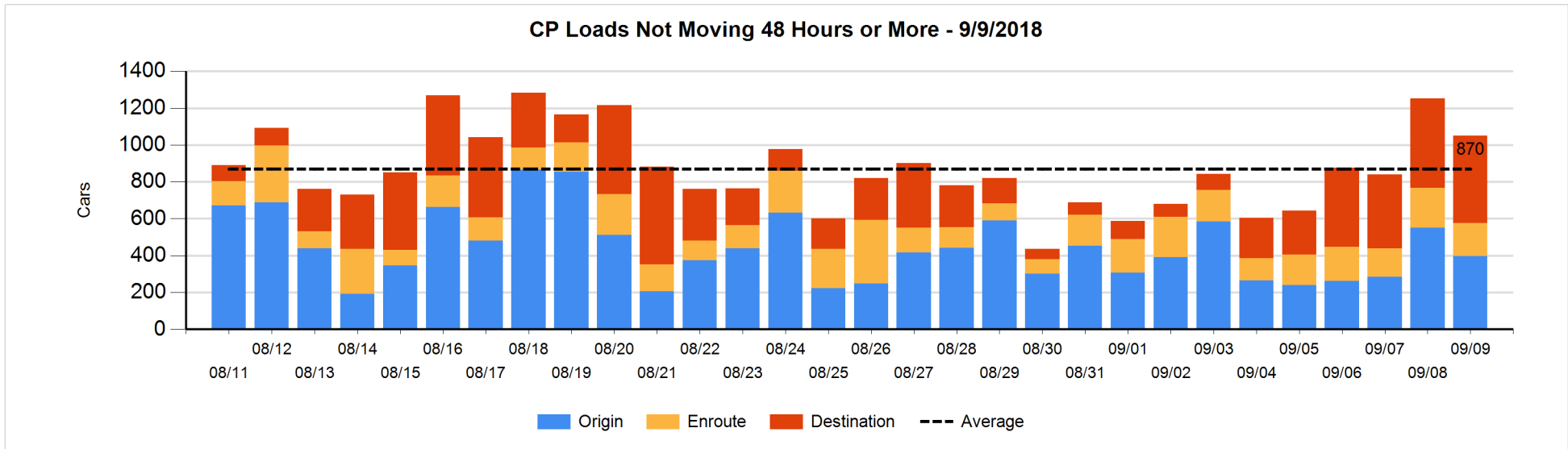
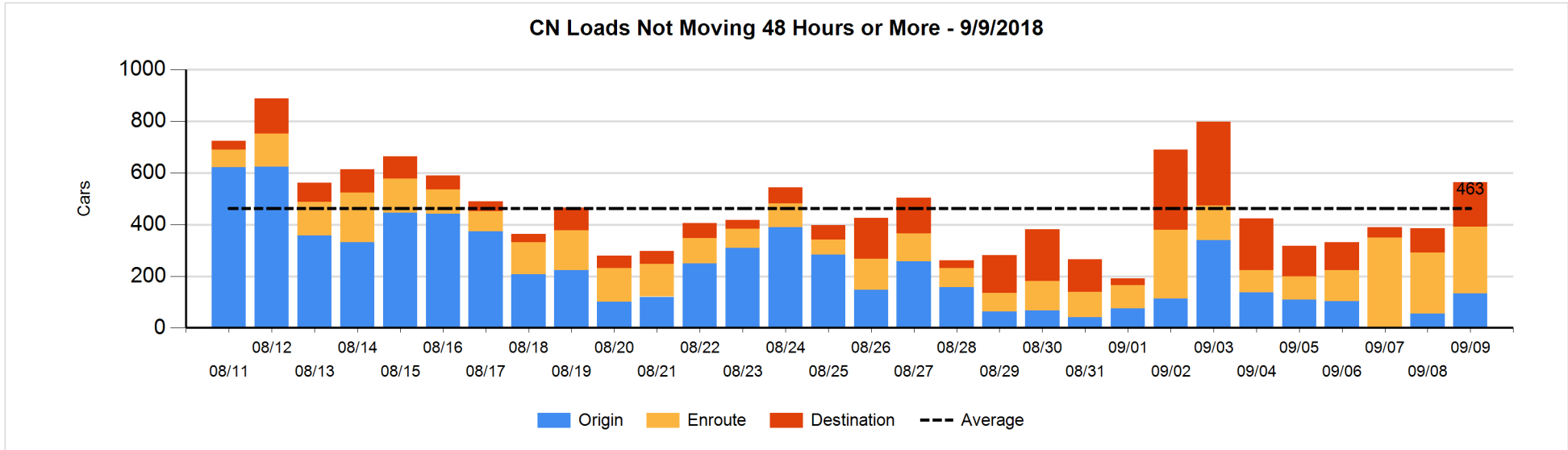


Loads Not Moving 48 Hours or More - 9/9/2018

	E Canada	Prince Rupert	Thunder Bay	USA/MEX	Vancouver	Total
CN						
Origin		20		5	109	134
Enroute	16	17	4	65	155	257
Destination	21	6	84	3	58	172
	37	43	88	73	322	563
CP						
Origin	26			9	361	396
Enroute	4		12	89	74	179
Destination			297	25	152	474
	30		309	123	587	1049
US Rail / Short Line						
Origin						
Enroute	1			34		35
Destination				49	16	65
	1			83	16	100

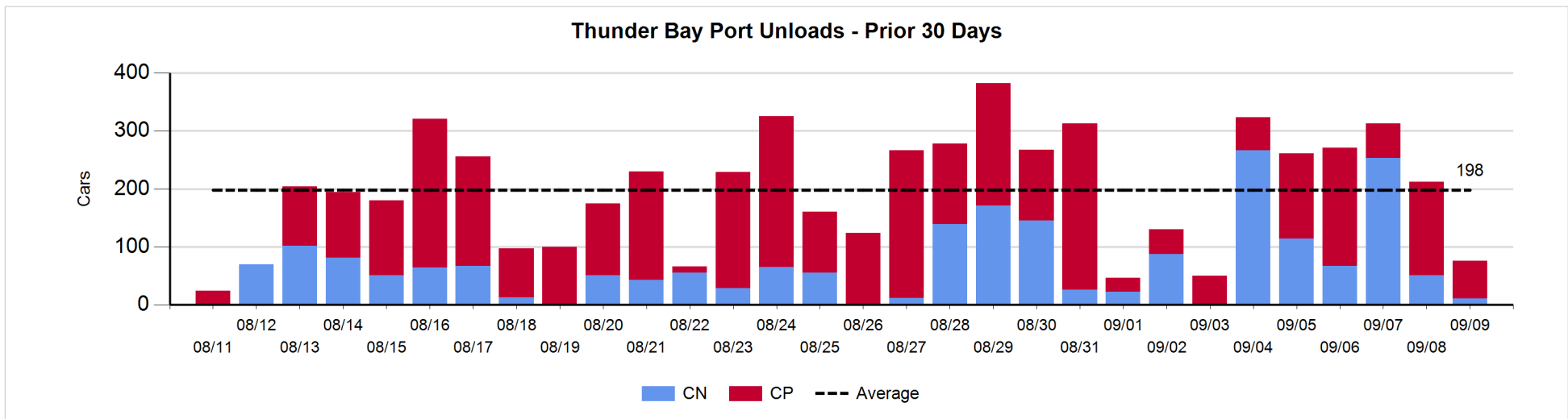
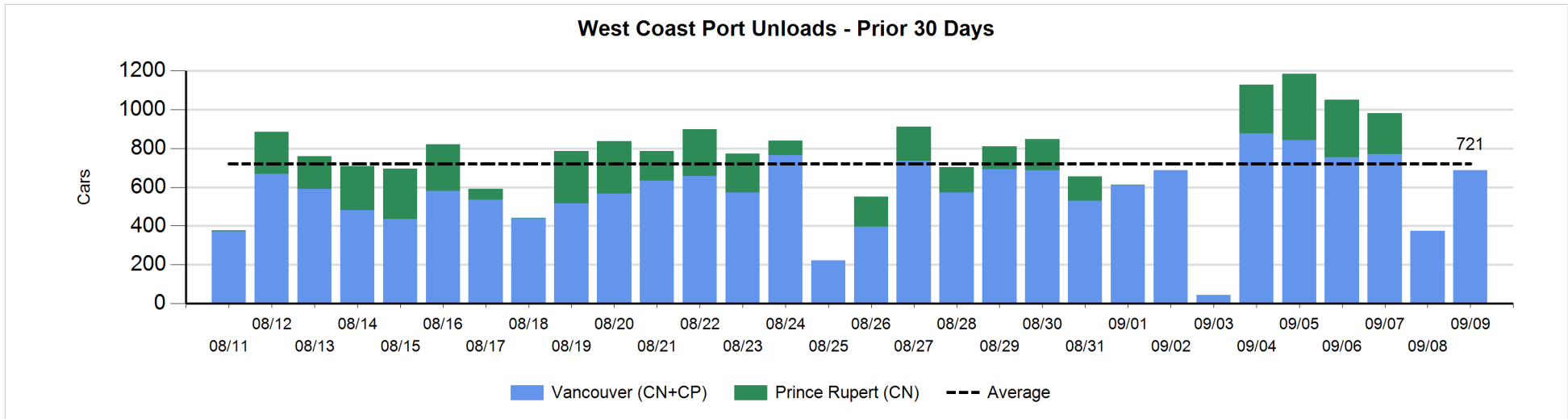
Change in Loads Not Moving 48 Hours or More - 9/9/2018

	E Canada	Prince Rupert	Thunder Bay	USA/MEX	Vancouver	Total
CN						
Origin		20	-48	1	107	80
Enroute	0	-20	4	8	27	19
Destination	2	1	34	1	41	79
	2	1	-10	10	175	178
CP						
Origin	1			1	-158	-156
Enroute	-10		0	27	-53	-36
Destination			50	25	-86	-11
	-9		50	53	-297	-203
US Rail / Short Line						
Origin						
Enroute	0			5		5
Destination				11	1	12
	0			16	1	17



Port Unloads - 9/9/2018

	Prince Rupert	Vancouver	West Coast Total	Thunder Bay	Total
CN		271	271	11	282
CP		416	416	65	481
		687	687	76	763



Port Terminal Status

Vancouver

Daily Activity for 9/9/2018

	Cars Arrived	Cars Received in Interchange	Cars Delivered in Interchange	Cars Placed for Unloading	Loads on Wheels at Destination As of 9/9/2018
CN	499	145	169	400	544
CP	157	167	145	391	703
SRY		2		7	33

Port Unloads

	09/09	09/08	Week To Date	Last Week
CN	271	134	1,893	2,159
CP	416	240	2,452	2,355
SRY		10	48	37

Age Profile of Loaded Cars Waiting Placement for Unloading

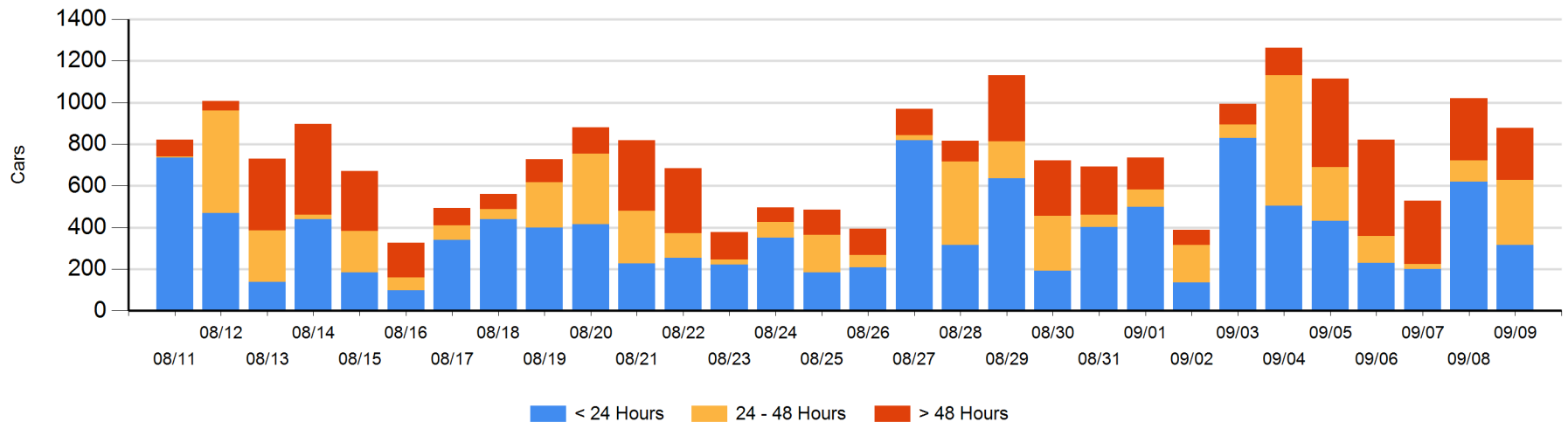
Today

	< 24 Hrs	24 - 48 Hrs	> 48-72 Hrs	> 72 Hrs	Total On Hand
CN	276	21		153	450
CP	41	290	40	58	429
SRY					0

Change in Last 24 Hours

	< 24 Hrs	24-48 Hrs	48 - 72 Hrs	> 72 Hrs
CN	220	16	-19	-18
CP	-524	195	35	-48
SRY				

Loaded Cars on Hand Vancouver Waiting for Placement - Last 30 Days All Railways



Port Terminal Status

Prince Rupert

Daily Activity for 9/9/2018

	Cars Arrived	Cars Received in Interchange	Cars Delivered in Interchange	Cars Placed for Unloading	Loads on Wheels at Destination As of 9/9/2018
CN	251			252	375

Port Unloads

	09/09	09/08	Week To Date	Last Week
CN			1,103	712

Age Profile of Loaded Cars Waiting Placement for Unloading

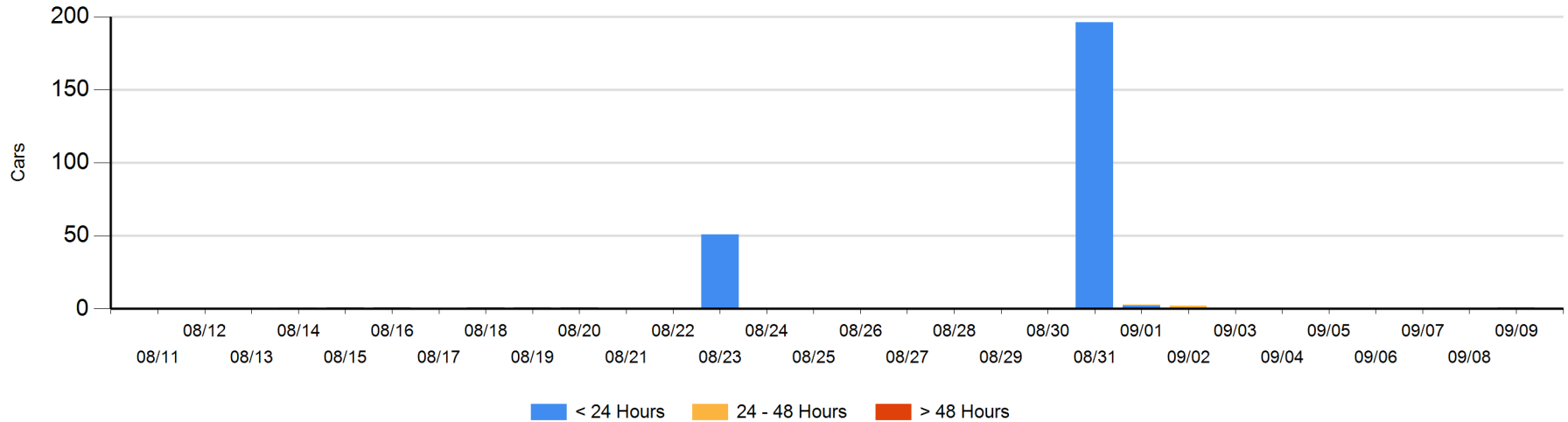
Today

	< 24 Hrs	24 - 48 Hrs	> 48-72 Hrs	> 72 Hrs	Total On Hand
CN	1				1

Change in Last 24 Hours

	< 24 Hrs	24-48 Hrs	48 - 72 Hrs	> 72 Hrs
CN	1			

Loaded Cars on Hand Prince Rupert Waiting for Placement - Last 30 Days All Railways



Port Terminal Status

Thunder Bay

Daily Activity for 9/9/2018

	Cars Arrived	Cars Received in Interchange	Cars Delivered in Interchange	Cars Placed for Unloading	Loads on Wheels at Destination As of 9/9/2018
CN	99		2	90	256
CP	243	2		139	665

Port Unloads

	09/09	09/08	Week To Date	Last Week
CN	11	51	762	602
CP	65	161	744	1,080

Age Profile of Loaded Cars Waiting Placement for Unloading

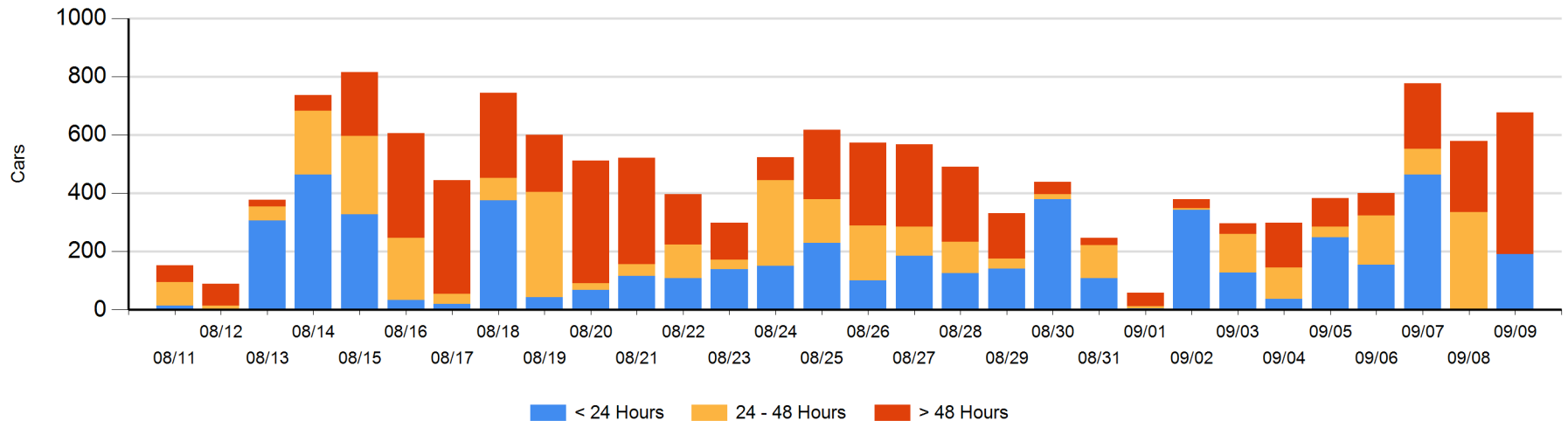
Today

	< 24 Hrs	24 - 48 Hrs	> 48-72 Hrs	> 72 Hrs	Total On Hand
CN	9		98	2	109
CP	182		160	227	569

Change in Last 24 Hours

	< 24 Hrs	24-48 Hrs	48 - 72 Hrs	> 72 Hrs
CN	9	-98	98	0
CP	182	-238	88	58

Loaded Cars on Hand Thunder Bay Waiting for Placement - Last 30 Days All Railways



Measurement Definitions

Loads on Wheels	<p>Count of loaded rail cars including all rail cars that have been released loaded at origin and have not been reported by the railway as unloaded at destination.</p> <p>Counts include all rail cars (hopper cars and boxcars) moving within a pipeline.</p>
Loads Not Moving	<p>Loaded rail cars for which the railways have not reported a movement event for 48 hours or more whether the rail car is at origin, enroute or at destination.</p>
Port Unloads	<p>Count of rail cars reported by railways as unloaded at the western port destinations of Vancouver, Prince Rupert and Thunder Bay.</p> <p>Unload counts include all rail cars (hopper cars and boxcars) unloaded by all receivers including major port terminals, transloaders and other receivers.</p>
Cars Arrived	<p>Count of rail cars reported as arrived at the destination railway terminal.</p>
Cars Received in Interchange	<p>Count of rail cars received in interchange by each railway within a destination railway terminal. Interchange activity is tracked for the Vancouver and Thunder Bay pipelines as applicable.</p>
Cars Delivered in Interchange	<p>Count of rail cars delivered in interchange by each railway within a destination railway terminal. Interchange activity is tracked for the Vancouver and Thunder Bay pipelines as applicable.</p>
Cars Placed for Unloading	<p>Count of rail cars reported by the railways as placed loaded at the receiver's facility for unloading.</p>
Loads on Wheels at Destination	<p>Count of rail cars that remain under load within the destination railway terminal including rail cars that have been reported as placed for unloading but not yet reported as unloaded.</p>
Waiting Placement for Unloading	<p>Count of rail cars that have been reported as arrived at the destination railway terminal but not reported as placed for unloading by the railway.</p> <p>For the Ports of Vancouver, Prince Rupert and Thunder Bay the count of rail cars waiting placement for unloading is categorized by age – i.e. the elapsed time from arrival at destination to the current report date.</p>