

## SPEED READ

- Loads on wheels decreased overnight, reflecting lower CP traffic offset by an increase in CN volumes. On a net basis, volumes fell due to lower traffic across all corridors - Vancouver, Thunder Bay, Prince Rupert, USA/MEX and E. Canada.
- Network fluidity deteriorated overnight, led by an increase in idle car counts on both CN and CP by 17% (+258) and 6% (+85), respectively. The total count of cars for 4+ days on both railways increased 26% (+213) overnight - presently at 1,047 cars.
- Week 18 unloads concluded behind prior week's performance by 550 unloads, reflecting reduced unloads at Vancouver offset by improved week over week performance at Prince Rupert and Thunder Bay.

---

## Loads on Wheels

- Loads on wheels decreased 3% (-405) overnight, due to lower traffic on CP offset by higher traffic on CN - combined total at 12,186 and 2% above the trailing 30-day average.
- On a net basis, the decline in loads on wheels indicates reduced traffic across all corridors - Vancouver, Thunder Bay, Prince Rupert, USA/MEX and E. Canada.
- CN volumes increased 2% (+133) overnight, with higher traffic in the Vancouver and Thunder Bay corridors offset by lower traffic in the Prince Rupert, E. Canada and USA/MEX corridors. System wide CN loads on wheels now at 6,631 and 9% above the trailing 30-day average.
- CP volumes declined 9% (-546) overnight, driven by a decline in traffic across all corridors - Vancouver, Thunder Bay, USA/MEX and E. Canada. CP system wide loads on wheels now at 5,354 and 5% below the trailing 30-day average.
- Vancouver presently at 7,924, decreased 2% (-162) overnight, now 8% above the trailing 30-day average.
- The Prince Rupert pipeline presently at 1,843, declined 5% (-95) overnight, and 24% above the trailing 30-day average.
- Thunder Bay volumes decreased 5% (-93) overnight - currently at 1,665 and 10% below the trailing 30-day average, with 61% of traffic moving on CP.

## Hopper Car Rationing

- CN rationed 174 hopper cars in week 17.

## Loads Not Moving

- **The count of cars not moving for 48+ hours increased for the third consecutive day, up 12% (+343) overnight, reflecting higher counts on both CN and CP. Idle car counts now at 3,246 and 26% above the trailing 30-day average.**
- CN
  - **The count of idle cars for 48+ hours increased 17% (+258) overnight and have now increased for the third consecutive day - now at 1,806 cars, the highest seen in the last 30 days.**
  - The number of cars idle for 4+ days rose 43% (+156) overnight - now at 518 cars.
  - The count of cars not moving for 7+ days surged by 352% (+109) overnight - now at 140 cars.
  - Vancouver represents 51% of all idle cars.
  - In total 58% of all idle cars are dwelling at origin locations.
- CP
  - **CP idle car counts for 48+ hours increased 6% (+85) overnight - currently at 1,440 cars.**
  - The number of cars idle for 4+ days increased 12% (+57) overnight - presently at 529 cars.

- The number of cars idle for 7+ days declined 23% (-79) overnight - presently at 259 cars.
- Vancouver accounts for 59% of all idle cars.
- In total 45% of all idle cars are dwelling at origin locations.

### **Port Performance**

- CN and CP reported a total of 1,142 cars unloaded at the three major ports, now 9% below the trailing 30 day-average. Week 18 unloads concluded behind last week's pace by 550 unloads, reflecting reduced unloads at Vancouver offset by higher unloads at Prince Rupert and Thunder Bay.
- Vancouver
  - 674 unloads reported by CN and CP at the Port of Vancouver; CN - 266 and CP - 408. Week 18 unloads concluded behind last week's performance by more than 850 unloads.
  - There are 1,700 cars on site at Vancouver with 750 cars arriving at the port in the last 24 hours.
  - CN and CP have 2,050 cars in British Columbia en route to Vancouver, with less than 1,150 cars at Kamloops and west, and 55% of traffic moving on CN.
- Prince Rupert
  - Prince Rupert reported 247 unloads, finished ahead of last week's unloads by more than 150 unloads.
  - Loads on wheels now above 1,000 cars - now at 1,843 cars.
  - There are more than 100 cars west of Jasper en route to Prince Rupert.
  - There are 300 cars on site at Prince Rupert with 300 cars arriving at the port in the last 24 hours. Given the structure of the pipeline, there appears to be sufficient cars available to support unloads in the next few days.
- Thunder Bay
  - 221 unloads were reported at Thunder Bay yesterday. Week 18 unloads concluded ahead of last week's pace by 150 unloads.
  - There are more than 900 cars on site at Thunder Bay with 22 cars arriving at the port in the prior 24 hours.
  - There are 200 cars en route to Thunder Bay from Winnipeg and east. Cars on hand and those en route should support unloads in the next few days.

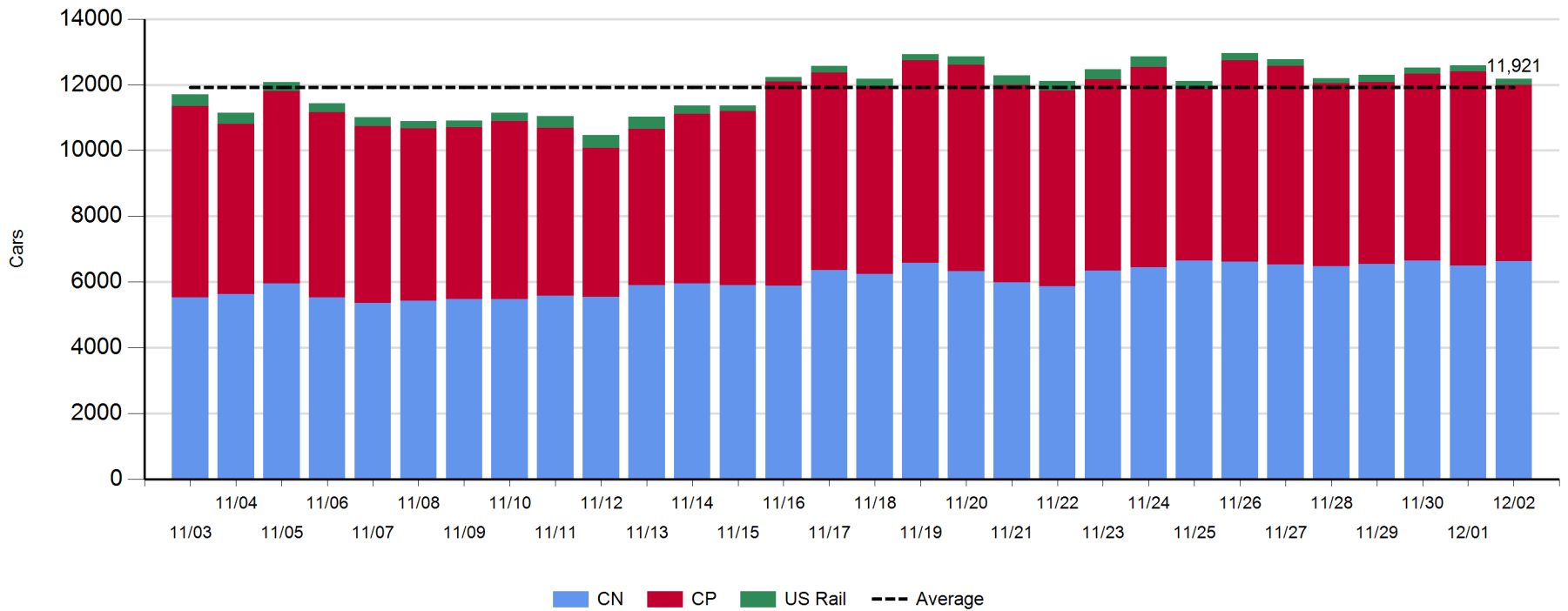
**Daily Loads on Wheels - 12/2/2018**

	E Canada	Prince Rupert	Thunder Bay	USA/MEX	Vancouver	Total
CN	187	1,843	656	198	3,747	6,631
CP	59		1,009	144	4,142	5,354
Short Line	9				35	44
US Rail				157		157
	255	1,843	1,665	499	7,924	12,186

**Change in Loads on Wheels - Prior 24 Hours**

	E Canada	Prince Rupert	Thunder Bay	USA/MEX	Vancouver	Total
CN	-41	-95	128	-2	143	133
CP	-1		-221	-17	-307	-546
Short Line	0				2	2
US Rail				6		6
	-42	-95	-93	-13	-162	-405

**Loads on Wheels - Prior 30 Days**

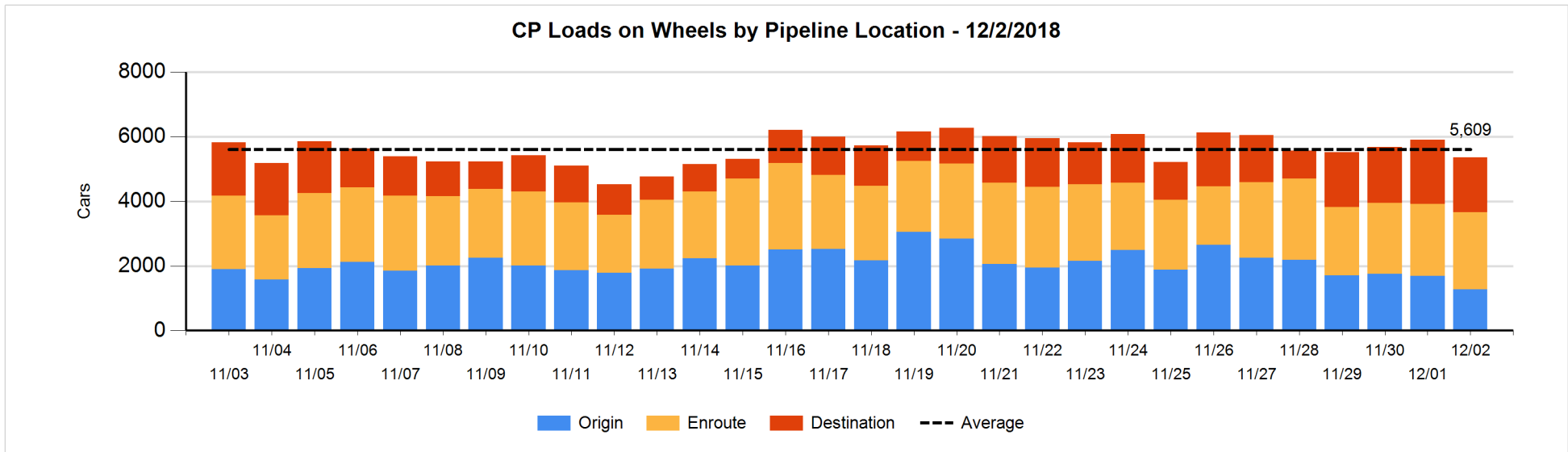
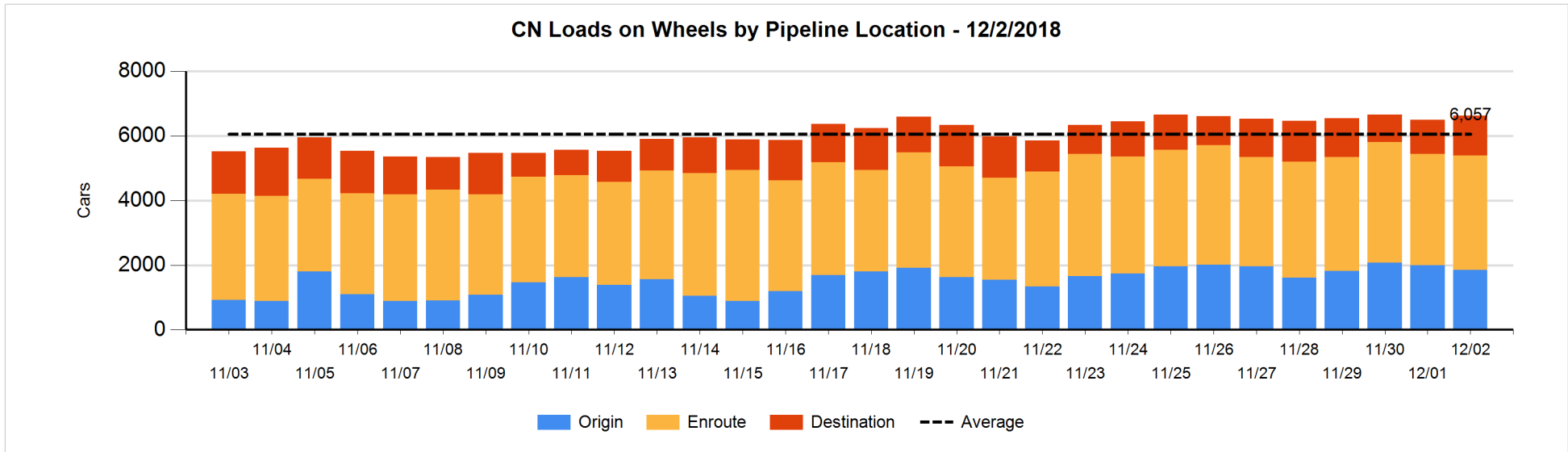


**Daily Loads on Wheels By Pipeline Location - 12/2/2018**

	E Canada	Prince Rupert	Thunder Bay	USA/MEX	Vancouver	Total
CN						
Origin	9	754	147	40	892	1,842
Enroute	145	799	185	150	2,272	3,551
Destination	33	290	324	8	583	1,238
	187	1,843	656	198	3,747	6,631
CP						
Origin	34		1	10	1,235	1,280
Enroute	25		405	121	1,828	2,379
Destination			603	13	1,079	1,695
	59		1,009	144	4,142	5,354
US Rail / Short Line						
Origin						
Enroute				118		118
Destination	9			39	35	83
	9			157	35	201

**Change in Daily Loads on Wheels By Pipeline Location - Prior 24 Hours**

	E Canada	Prince Rupert	Thunder Bay	USA/MEX	Vancouver	Total
CN						
Origin	0	-159	24	0	-16	-151
Enroute	-15	9	82	-1	37	112
Destination	-26	55	22	-1	122	172
	-41	-95	128	-2	143	133
CP						
Origin	0		-233	-9	-162	-404
Enroute	-1		233	-7	-87	138
Destination			-221	-1	-58	-280
	-1		-221	-17	-307	-546
US Rail / Short Line						
Origin						
Enroute				9		9
Destination	0			-3	2	-1
	0			6	2	8

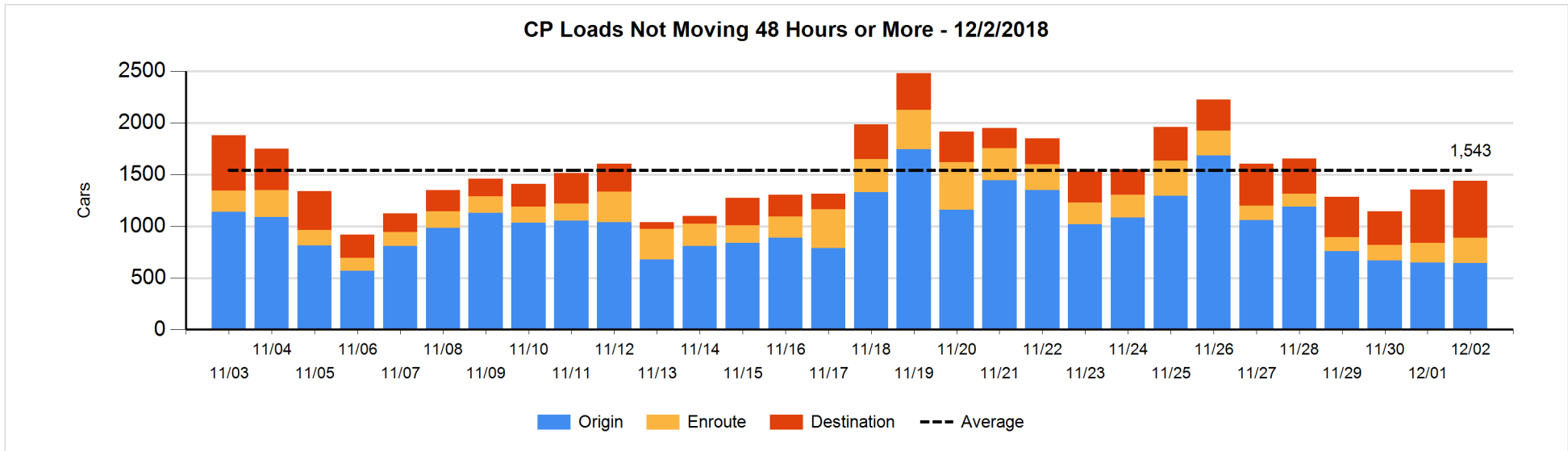
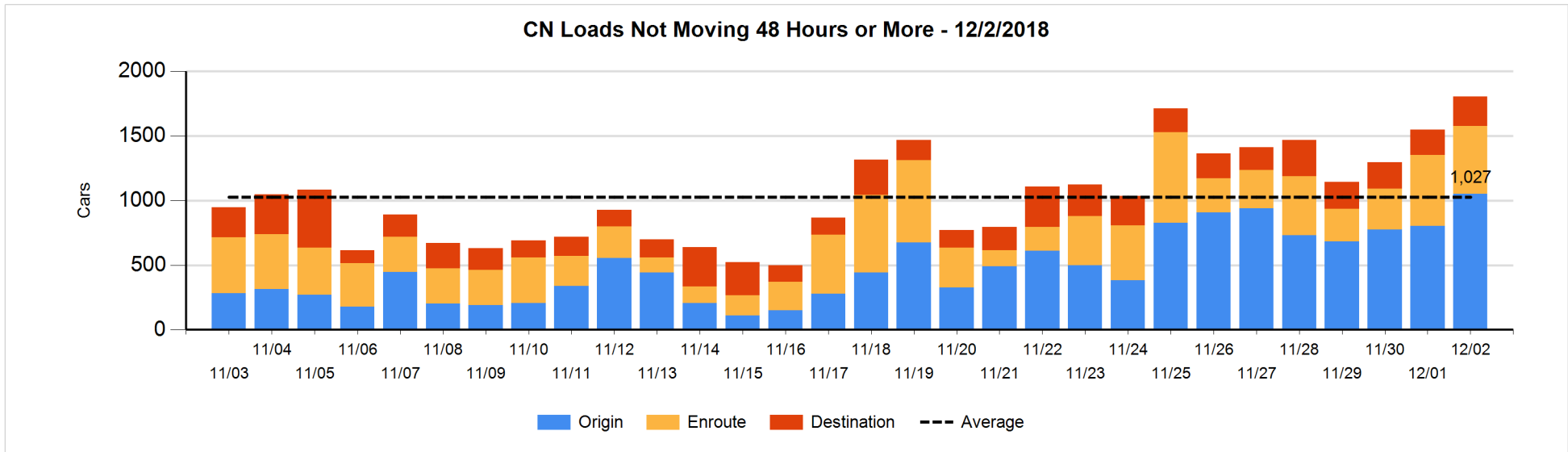


**Loads Not Moving 48 Hours or More - 12/2/2018**

	E Canada	Prince Rupert	Thunder Bay	USA/MEX	Vancouver	Total
CN						
Origin	2	501	19	40	488	1050
Enroute	66	130	18	27	287	528
Destination	9	24	35	7	153	228
	77	655	72	74	928	1806
CP						
Origin	34		1	10	597	642
Enroute	20		11	65	152	248
Destination			454	1	95	550
	54		466	76	844	1440
US Rail / Short Line						
Origin						
Enroute				30		30
Destination	7			31	24	62
	7			61	24	92

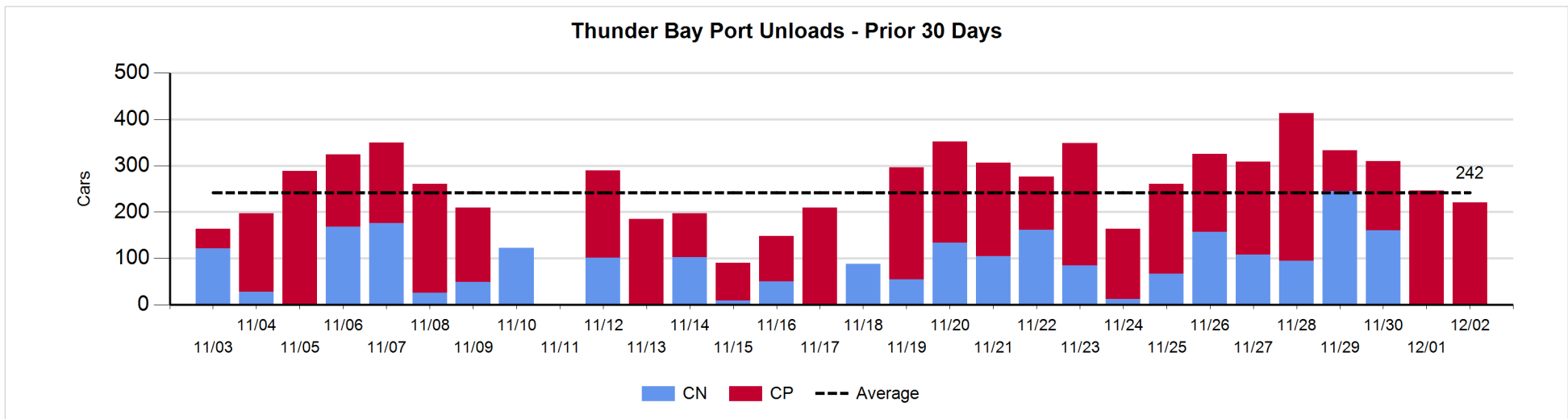
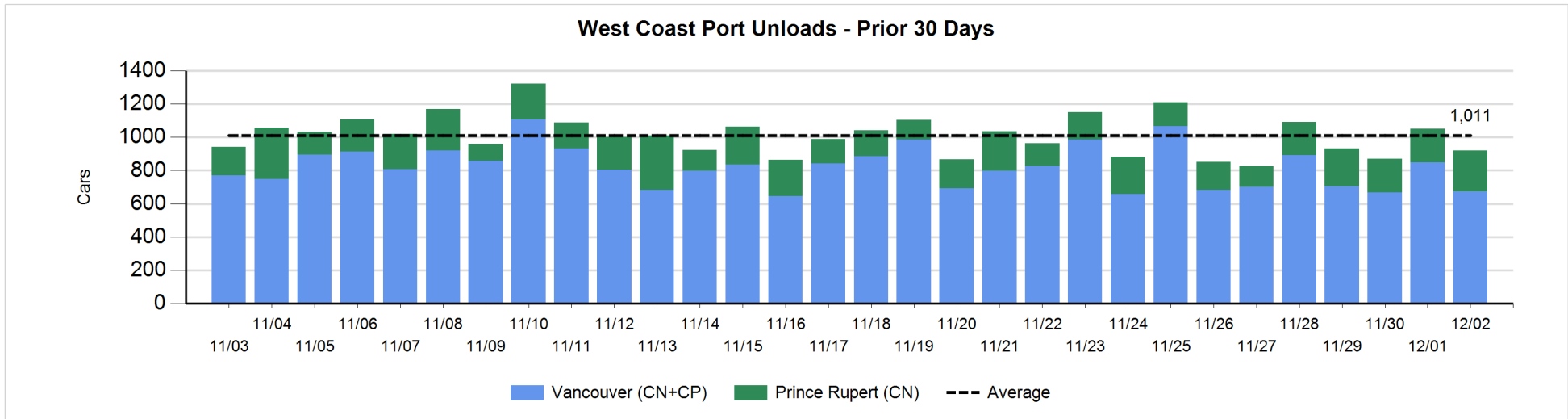
**Change in Loads Not Moving 48 Hours or More - 12/2/2018**

	E Canada	Prince Rupert	Thunder Bay	USA/MEX	Vancouver	Total
CN						
Origin	1	297	0	6	-56	248
Enroute	1	-14	10	12	-31	-22
Destination	0	0	30	3	-1	32
	2	283	40	21	-88	258
CP						
Origin	33		-116	3	75	-5
Enroute	1		-1	-8	64	56
Destination			82	-1	-47	34
	34		-35	-6	92	85
US Rail / Short Line						
Origin						
Enroute				5		5
Destination	7			4	-1	10
	7			9	-1	15



**Port Unloads - 12/2/2018**

	Prince Rupert	Vancouver	West Coast Total	Thunder Bay	Total
CN	247	266	513		513
CP		408	408	221	629
	247	674	921	221	1,142





**Port Terminal Status**

**Vancouver**

Daily Activity for 12/2/2018

	Cars Arrived	Cars Received in Interchange	Cars Delivered in Interchange	Cars Placed for Unloading	Loads on Wheels at Destination As of 12/2/2018
CN	402	230	2	466	583
CP	347		230	467	1,079
SRY		2		4	35

**Port Unloads**

	12/02	12/01	Week To Date	Last Week
CN	266	411	2,394	2,955
CP	408	438	2,776	3,061
SRY		2	56	89

**Age Profile of Loaded Cars Waiting Placement for Unloading**

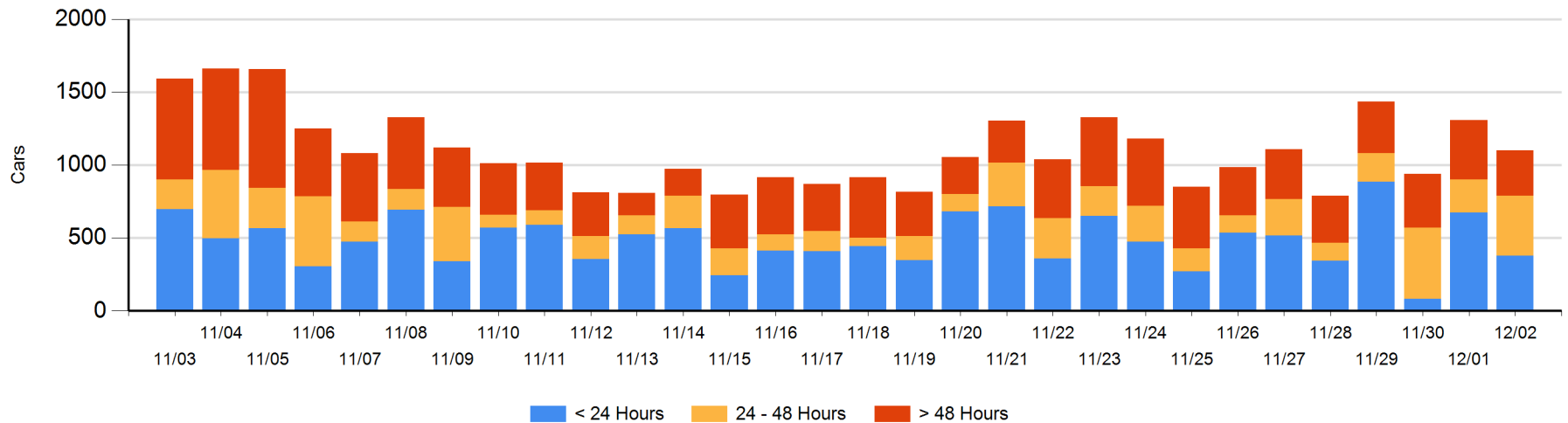
**Today**

	< 24 Hrs	24 - 48 Hrs	> 48-72 Hrs	> 72 Hrs	Total On Hand
CN	146	63	12	112	333
CP	231	350	6	179	766
SRY				1	1

**Change in Last 24 Hours**

	< 24 Hrs	24-48 Hrs	48 - 72 Hrs	> 72 Hrs
CN	57	-123	-16	-41
CP	-353	309	-75	32
SRY			-1	1

**Loaded Cars on Hand Vancouver Waiting for Placement - Last 30 Days All Railways**



**Port Terminal Status**

**Prince Rupert**

Daily Activity for 12/2/2018

	Cars Arrived	Cars Received in Interchange	Cars Delivered in Interchange	Cars Placed for Unloading	Loads on Wheels at Destination As of 12/2/2018
CN	302			302	290

**Port Unloads**

	12/02	12/01	Week To Date	Last Week
CN	247	202	1,369	1,196

**Age Profile of Loaded Cars Waiting Placement for Unloading**

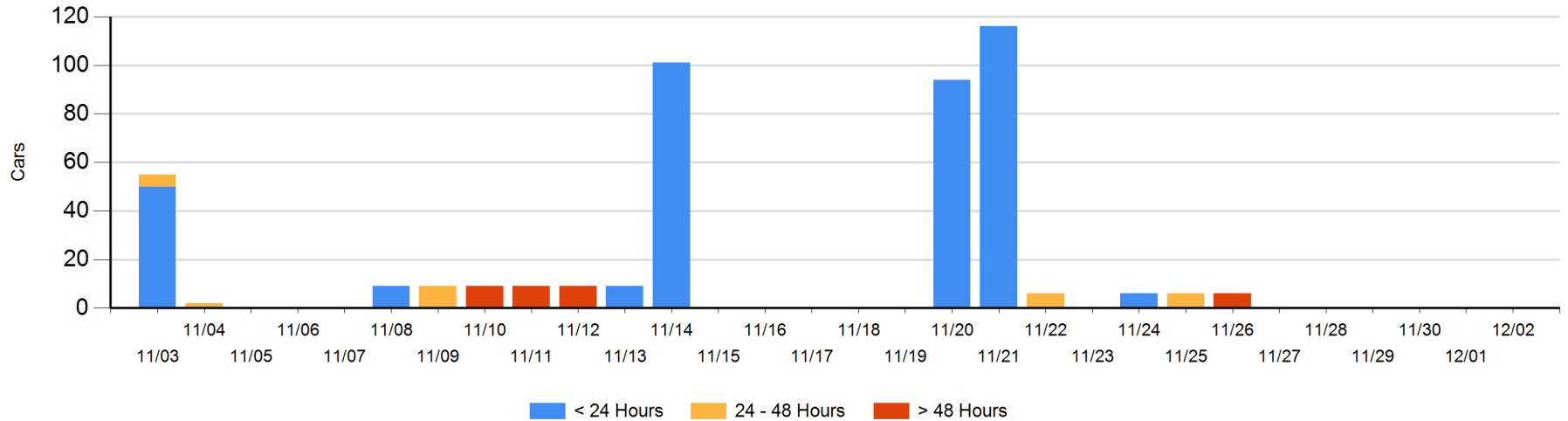
**Today**

	< 24 Hrs	24 - 48 Hrs	> 48-72 Hrs	> 72 Hrs	Total On Hand
CN					0

**Change in Last 24 Hours**

	< 24 Hrs	24-48 Hrs	48 - 72 Hrs	> 72 Hrs
CN				

Loaded Cars on Hand Prince Rupert Waiting for Placement - Last 30 Days All Railways



**Port Terminal Status**

**Thunder Bay**

Daily Activity for 12/2/2018

	Cars Arrived	Cars Received in Interchange	Cars Delivered in Interchange	Cars Placed for Unloading	Loads on Wheels at Destination As of 12/2/2018
CN	22			71	324
CP				133	603

**Port Unloads**

	12/02	12/01	Week To Date	Last Week
CN			765	620
CP	221	246	1,392	1,384

**Age Profile of Loaded Cars Waiting Placement for Unloading**

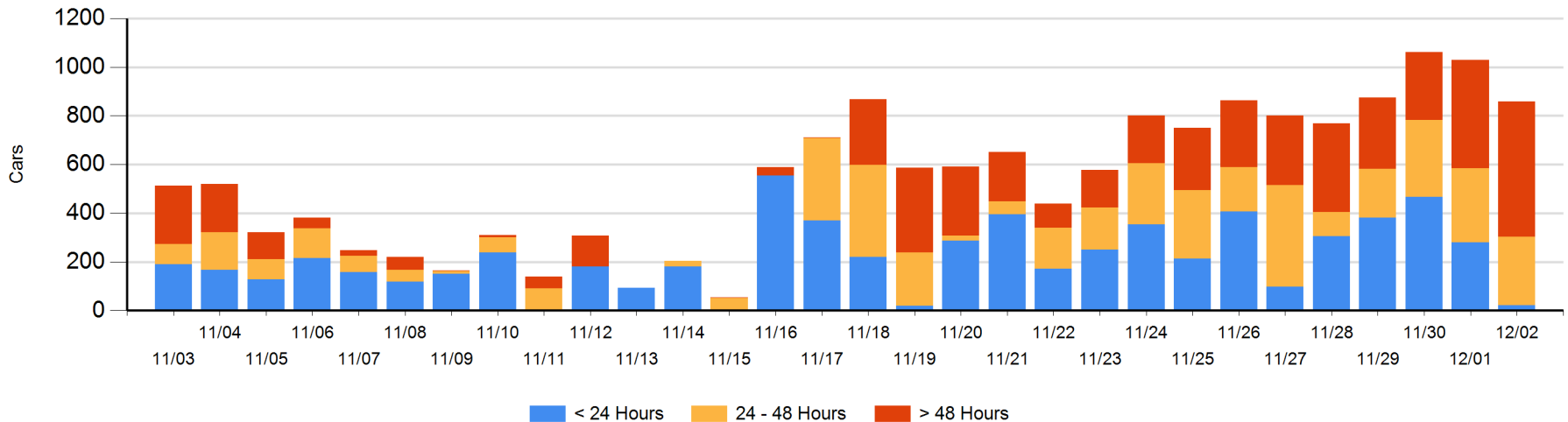
**Today**

	< 24 Hrs	24 - 48 Hrs	> 48-72 Hrs	> 72 Hrs	Total On Hand
CN	22	192		33	247
CP		88	255	268	611

**Change in Last 24 Hours**

	< 24 Hrs	24-48 Hrs	48 - 72 Hrs	> 72 Hrs
CN	-170	192		-71
CP	-88	-217	5	178

**Loaded Cars on Hand Thunder Bay Waiting for Placement - Last 30 Days All Railways**



## Measurement Definitions

Loads on Wheels	<p>Count of loaded rail cars including all rail cars that have been released loaded at origin and have not been reported by the railway as unloaded at destination.</p> <p>Counts include all rail cars (hopper cars and boxcars) moving within a pipeline.</p>
Loads Not Moving	<p>Loaded rail cars for which the railways have not reported a movement event for 48 hours or more whether the rail car is at origin, enroute or at destination.</p>
Port Unloads	<p>Count of rail cars reported by railways as unloaded at the western port destinations of Vancouver, Prince Rupert and Thunder Bay.</p> <p>Unload counts include all rail cars (hopper cars and boxcars) unloaded by all receivers including major port terminals, transloaders and other receivers.</p>
Cars Arrived	<p>Count of rail cars reported as arrived at the destination railway terminal.</p>
Cars Received in Interchange	<p>Count of rail cars received in interchange by each railway within a destination railway terminal. Interchange activity is tracked for the Vancouver and Thunder Bay pipelines as applicable.</p>
Cars Delivered in Interchange	<p>Count of rail cars delivered in interchange by each railway within a destination railway terminal. Interchange activity is tracked for the Vancouver and Thunder Bay pipelines as applicable.</p>
Cars Placed for Unloading	<p>Count of rail cars reported by the railways as placed loaded at the receiver's facility for unloading.</p>
Loads on Wheels at Destination	<p>Count of rail cars that remain under load within the destination railway terminal including rail cars that have been reported as placed for unloading but not yet reported as unloaded.</p>
Waiting Placement for Unloading	<p>Count of rail cars that have been reported as arrived at the destination railway terminal but not reported as placed for unloading by the railway.</p> <p>For the Ports of Vancouver, Prince Rupert and Thunder Bay the count of rail cars waiting placement for unloading is categorized by age – i.e. the elapsed time from arrival at destination to the current report date.</p>