

SPEED READ

- Loads on wheels increased slightly overnight, marking higher CP volumes offset by a decline in CN volumes. On a net basis, volumes increased due to higher volumes in the Thunder Bay and USA/MEX corridors offset by reduced traffic in the Prince Rupert, Vancouver and E. Canada corridors.
- Network fluidity deteriorated overnight, led by an increase in idle car counts on both CN and CP by 6% (+107) and 24% (+324) , respectively. The total count of cars for 4+ days on both railways rose 29% (+268) overnight - currently at 1,205 cars.
- One day in Week 19 unloads now ahead of prior week's performance by 250 unloads, reflecting improved week over week performance at Vancouver and Prince Rupert offset by lower unloads at Thunder Bay.

Loads on Wheels

- Loads on wheels increased marginally (+11) overnight, due to lower traffic on CN offset by higher traffic on CP - combined total at 12,197 and 2% above the trailing 30-day average.
- On a net basis, the slight increase in loads on wheels reflects higher volumes in the Thunder Bay and USA/MEX corridors offset by lower traffic in the Prince Rupert, Vancouver and E. Canada corridors.
- CN volumes decreased slightly by 1% (-95) overnight, with lower traffic in the Prince Rupert, E. Canada and USA/MEX corridors offset by higher traffic in the Thunder Bay and Vancouver corridors. System wide CN loads on wheels presently at 6,650 and 9% above the trailing 30-day average.
- CP volumes increased 2% (+124) overnight, driven by a rise in volumes across all corridors other than Vancouver. CP system wide loads on wheels now at 5,366 and 4% below the trailing 30-day average.
- Vancouver presently at 7,805, decreased for the third consecutive day, down 2% (-122) overnight, now 6% above the trailing 30-day average.
- The Prince Rupert pipeline presently at 1,658, declined 10% (-185) overnight, and 11% above the trailing 30-day average.
- Thunder Bay volumes rose significantly by 19% (+322) overnight - presently at 1,987 and 7% above the trailing 30-day average, with 63% of traffic moving on CP.

Hopper Car Rationing

- CN rationed 174 hopper cars in week 17.

Loads Not Moving

- **The count of cars not moving for 48+ hours gained for the fourth consecutive day, up 14% (+431) overnight, marking higher counts on both CN and CP. Idle car counts currently at 3,567 and 38% above the trailing 30-day average.**
- CN
 - **The count of idle cars for 48+ hours increased 6% (+107) overnight and have now increased for the fourth consecutive day - presently at 1,916 cars, the highest seen in the last 30 days.**
 - The number of cars idle for 4+ days rose for the third consecutive day, up 22% (+114) overnight - presently at 634 cars, the highest seen in the last 30 days.
 - The count of cars not moving for 7+ days decreased significantly by 66% (-93) overnight - presently at 47 cars.
 - Vancouver represents 46% of all idle cars.
 - In total 60% of all idle cars are dwelling at origin locations.
- CP
 - **CP idle car counts for 48+ hours increased 24% (+324) overnight - currently at 1,651 cars.**

- The number of cars idle for 4+ days gained 37% (+154) overnight - presently at 571 cars.
- The number of cars idle for 7+ days decreased 16% (-24) overnight - now at 123 cars.
- Vancouver accounts for 69% of all idle cars.
- In total 45% of all idle cars are dwelling at origin locations.

Port Performance

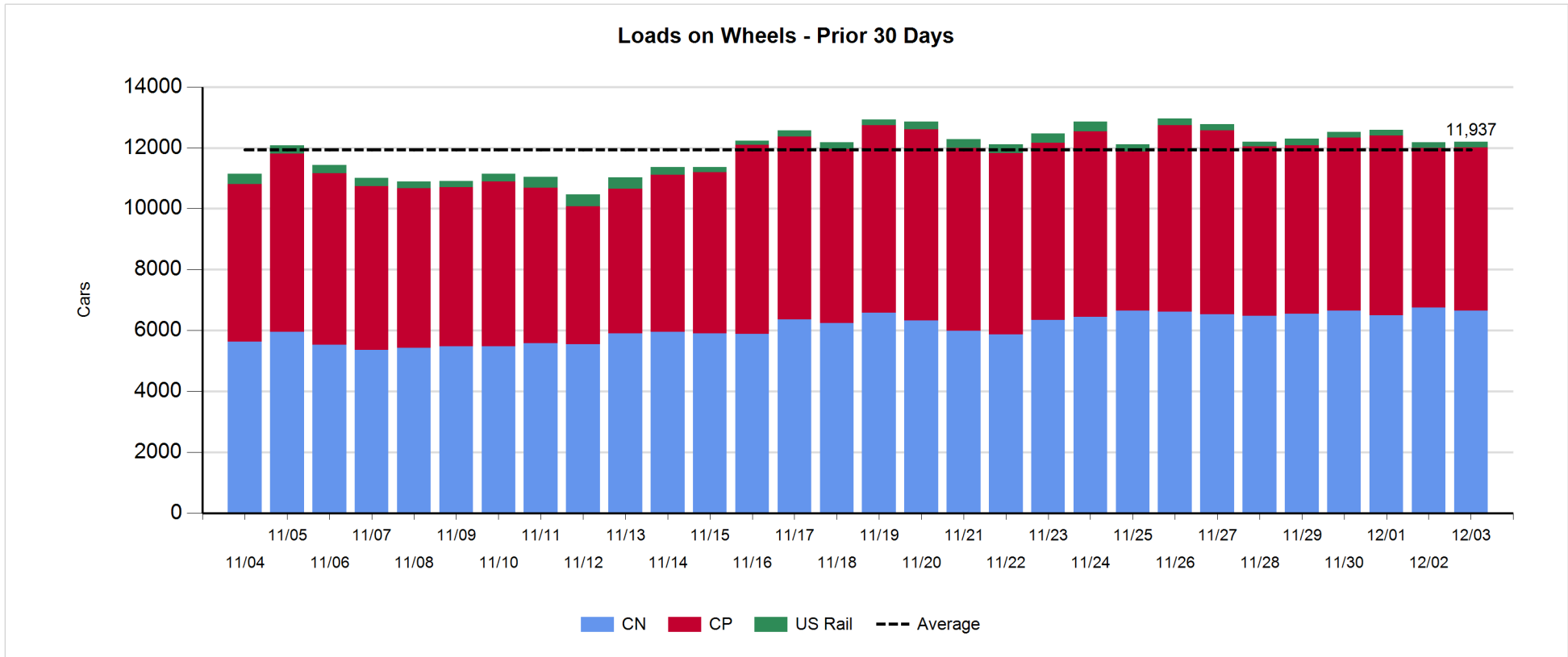
- CN and CP reported a total of 1,417 cars unloaded at the three major ports, now 12% above the trailing 30-day average. One day in Week 19 unloads now ahead of last week's pace by 250 unloads, reflecting higher unloads at Vancouver and Prince Rupert offset by lower unloads at Thunder Bay.
- Vancouver
 - 1,008 unloads reported by CN and CP at the Port of Vancouver; CN - 509 and CP - 499. One day in Week 19 unloads are tracking ahead of last week's performance by less than 350 unloads.
 - There are more than 1,300 cars on site at Vancouver with more than 650 cars arriving at the port in the last 24 hours.
 - CN and CP have less than 2,200 cars in British Columbia en route to Vancouver, with 1,300 cars at Kamloops and west, and 58% of traffic moving on CN.
- Prince Rupert
 - Prince Rupert reported 185 unloads, now ahead of last week's unloads after one day by 17 unloads.
 - Loads on wheels now above 1,000 cars - presently at 1,658 cars.
 - There are 300 cars west of Jasper en route to Prince Rupert.
 - There are more than 100 cars on site at Prince Rupert with 24 cars arriving at the port in the last 24 hours. Given the structure of the pipeline, there appears to be sufficient cars available to support unloads in the next few days.
- Thunder Bay
 - 224 unloads were reported at Thunder Bay yesterday. One day in Week 19 unloads are tracking behind last week's pace by 100 unloads.
 - There are more than 800 cars on site at Thunder Bay with more than 100 cars arriving at the port in the prior 24 hours.
 - There are 550 cars en route to Thunder Bay from Winnipeg and east. Cars on hand and those en route should support unloads in the next few days.

Daily Loads on Wheels - 12/3/2018

	E Canada	Prince Rupert	Thunder Bay	USA/MEX	Vancouver	Total
CN	158	1,658	730	193	3,911	6,650
CP	84		1,257	167	3,858	5,366
Short Line	5				36	41
US Rail				140		140
	247	1,658	1,987	500	7,805	12,197

Change in Loads on Wheels - Prior 24 Hours

	E Canada	Prince Rupert	Thunder Bay	USA/MEX	Vancouver	Total
CN	-29	-185	74	-5	50	-95
CP	25		248	24	-173	124
Short Line	-4				1	-3
US Rail				-15		-15
	-8	-185	322	4	-122	11

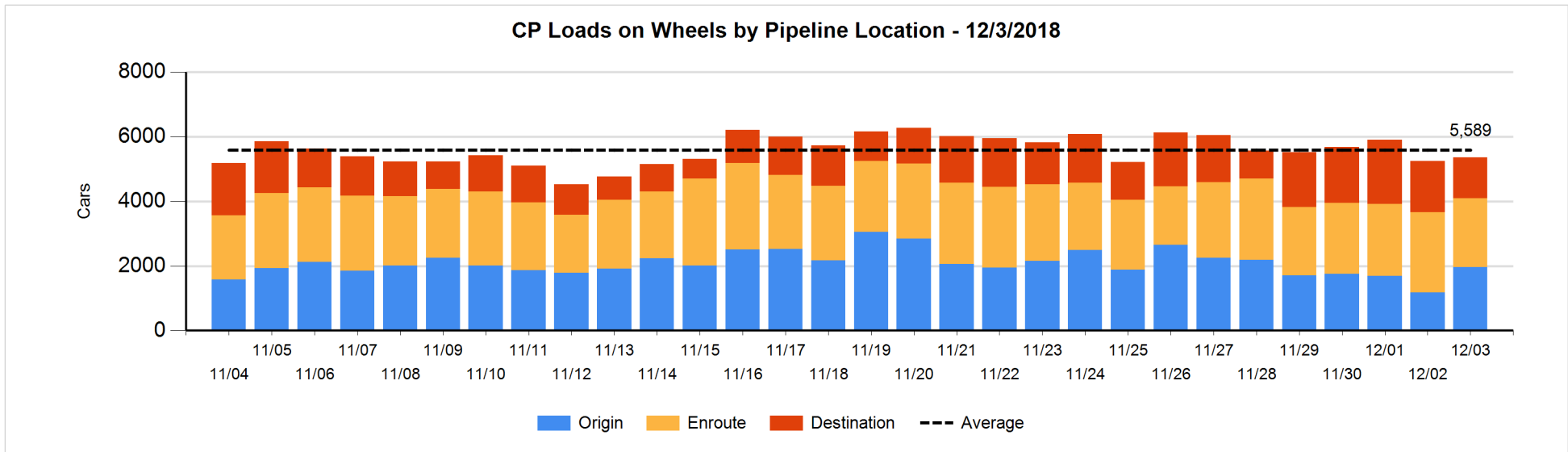
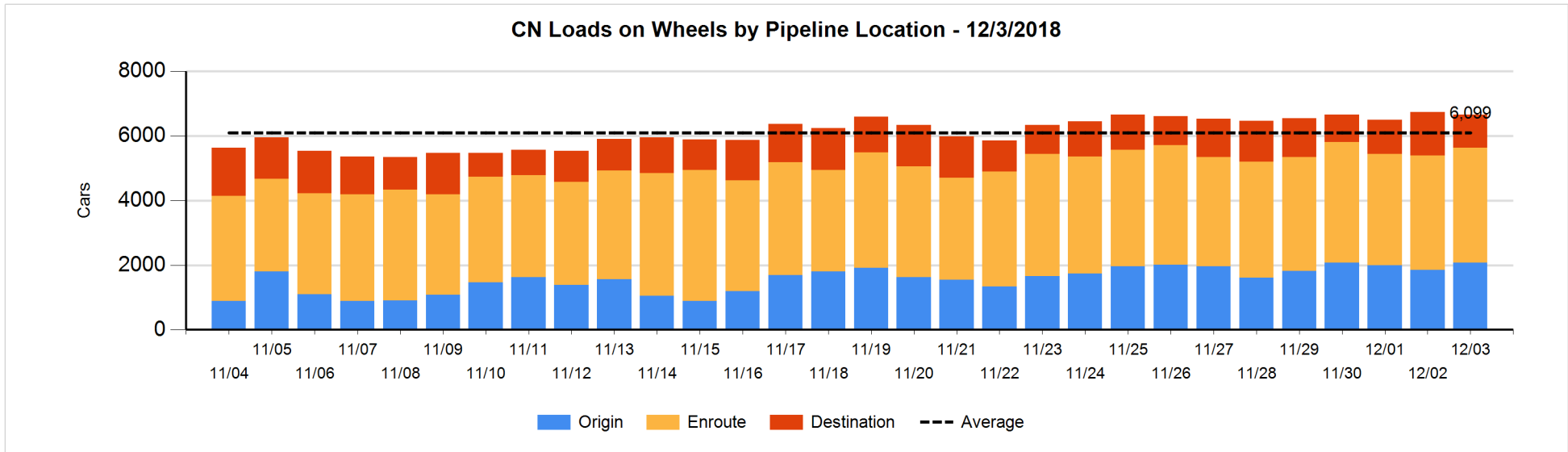


Daily Loads on Wheels By Pipeline Location - 12/3/2018

	E Canada	Prince Rupert	Thunder Bay	USA/MEX	Vancouver	Total
CN						
Origin	9	748	204	42	1,078	2,081
Enroute	107	781	261	139	2,265	3,553
Destination	42	129	265	12	568	1,016
	158	1,658	730	193	3,911	6,650
CP						
Origin	58		413	58	1,425	1,954
Enroute	26		294	97	1,717	2,134
Destination			550	12	716	1,278
	84		1,257	167	3,858	5,366
US Rail / Short Line						
Origin						
Enroute				104		104
Destination	5			36	36	77
	5			140	36	181

Change in Daily Loads on Wheels By Pipeline Location - Prior 24 Hours

	E Canada	Prince Rupert	Thunder Bay	USA/MEX	Vancouver	Total
CN						
Origin	0	-6	57	1	185	237
Enroute	-38	-18	76	-11	-7	2
Destination	9	-161	-59	5	-128	-334
	-29	-185	74	-5	50	-95
CP						
Origin	24		412	48	301	785
Enroute	1		-111	-24	-223	-357
Destination			-53	0	-251	-304
	25		248	24	-173	124
US Rail / Short Line						
Origin						
Enroute				-14		-14
Destination	-4			-1	1	-4
	-4			-15	1	-18

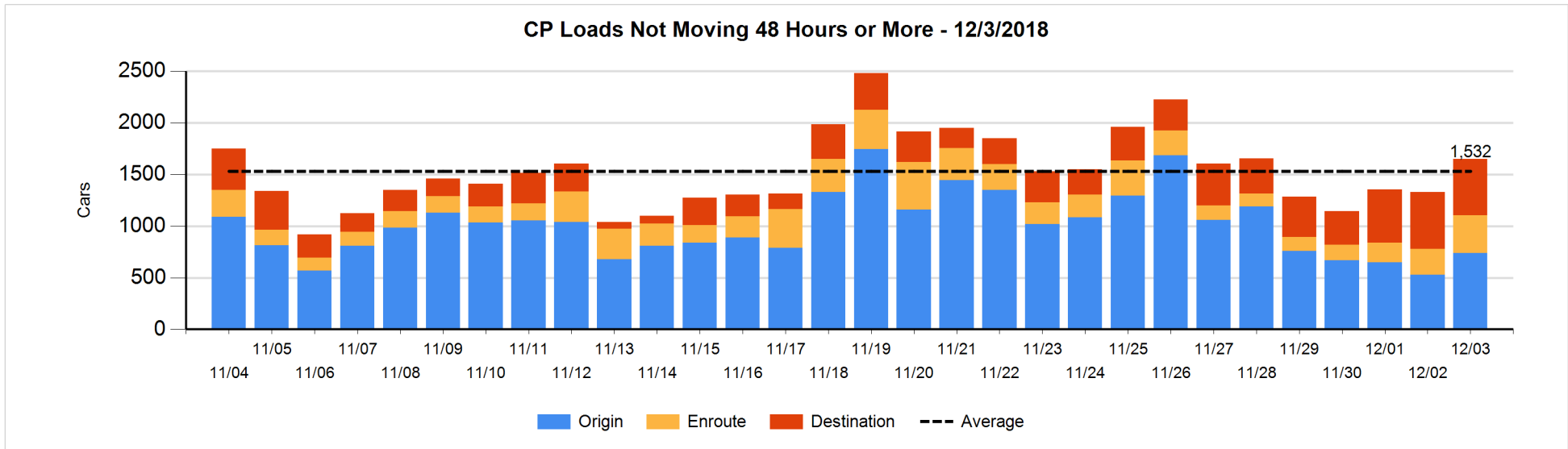
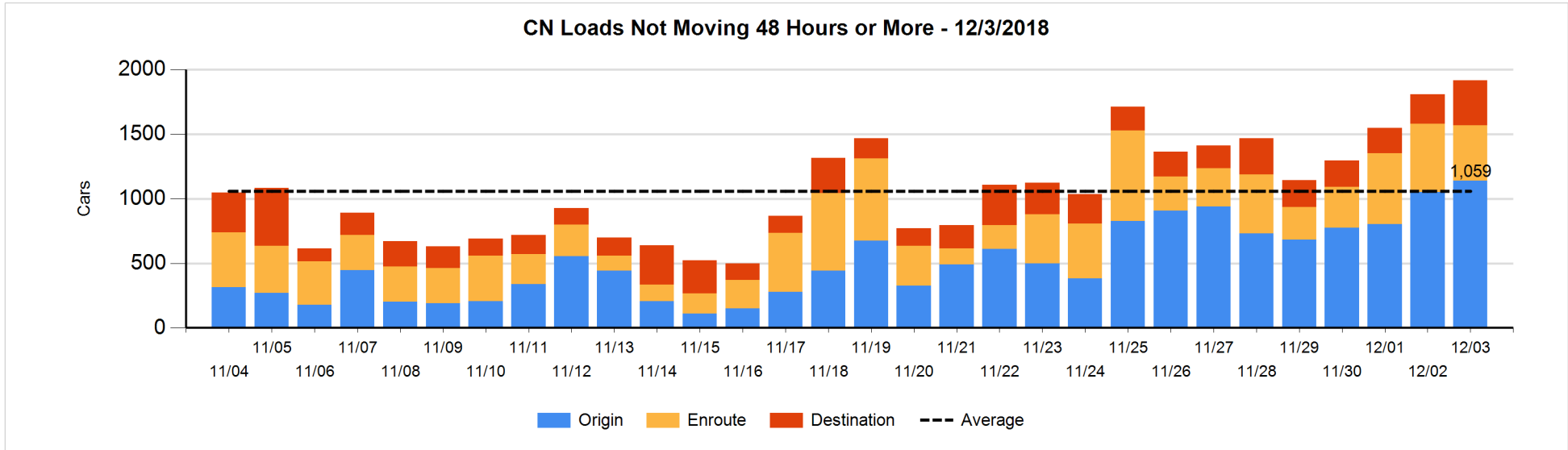


Loads Not Moving 48 Hours or More - 12/3/2018

	E Canada	Prince Rupert	Thunder Bay	USA/MEX	Vancouver	Total
CN						
Origin	9	605	19	41	467	1141
Enroute	6	92	11	12	307	428
Destination	6	24	202	4	111	347
	21	721	232	57	885	1916
CP						
Origin	33			10	697	740
Enroute	23		11	67	261	362
Destination			348	12	189	549
	56		359	89	1147	1651
US Rail / Short Line						
Origin						
Enroute				25		25
Destination	5			25	22	52
	5			50	22	77

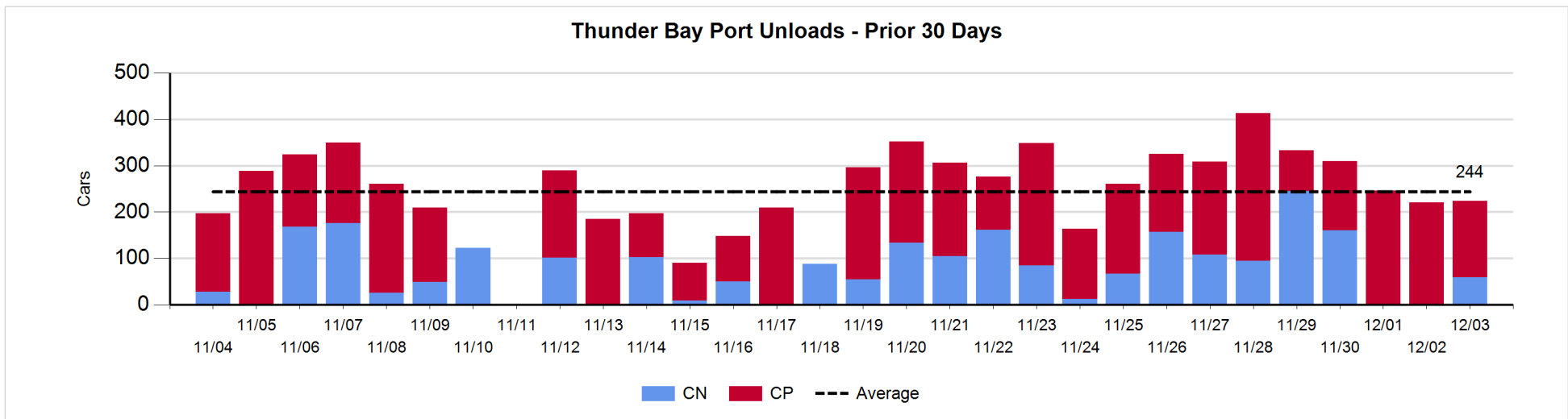
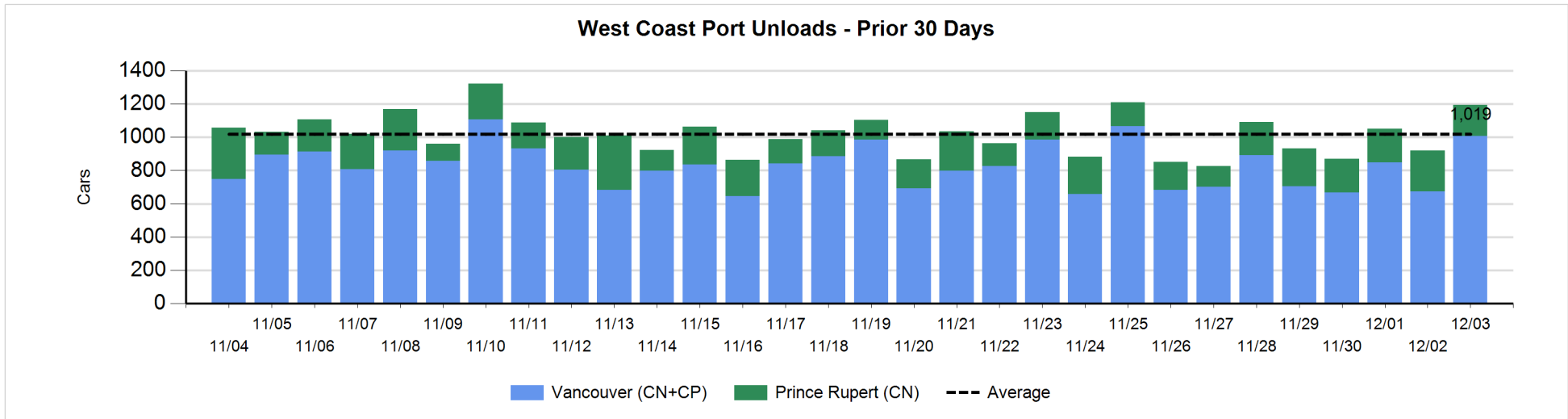
Change in Loads Not Moving 48 Hours or More - 12/3/2018

	E Canada	Prince Rupert	Thunder Bay	USA/MEX	Vancouver	Total
CN						
Origin	7	104	0	0	-22	89
Enroute	-60	-38	-7	-15	20	-100
Destination	-3	0	167	-3	-43	118
	-56	66	160	-18	-45	107
CP						
Origin	-1		-1	0	212	210
Enroute	3		0	2	109	114
Destination			-106	12	94	0
	2		-107	14	415	324
US Rail / Short Line						
Origin						
Enroute				-5		-5
Destination	-2			-6	-2	-10
	-2			-11	-2	-15



Port Unloads - 12/3/2018

	Prince Rupert	Vancouver	West Coast Total	Thunder Bay	Total
CN	185	509	694	59	753
CP		499	499	165	664
	185	1,008	1,193	224	1,417



Port Terminal Status

Vancouver

Daily Activity for 12/3/2018

	Cars Arrived	Cars Received in Interchange	Cars Delivered in Interchange	Cars Placed for Unloading	Loads on Wheels at Destination As of 12/3/2018
CN	175	350	21	366	568
CP	487	19	359	384	716
SRY		11		7	36

Port Unloads

	12/03	12/02	Week To Date	Last Week
CN	509	266	509	2,394
CP	499	408	499	2,776
SRY	10		10	56

Age Profile of Loaded Cars Waiting Placement for Unloading

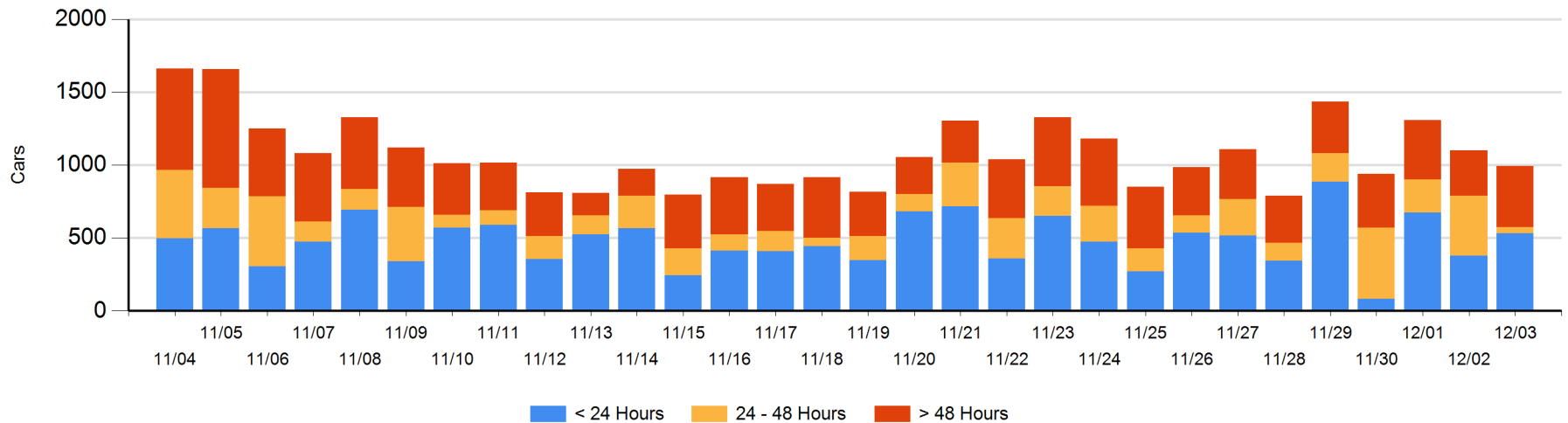
Today

	< 24 Hrs	24 - 48 Hrs	> 48-72 Hrs	> 72 Hrs	Total On Hand
CN	175	35	63	96	369
CP	358	5	96	166	625
SRY				1	1

Change in Last 24 Hours

	< 24 Hrs	24-48 Hrs	48 - 72 Hrs	> 72 Hrs
CN	28	-28	51	-16
CP	128	-345	90	-13
SRY				0

Loaded Cars on Hand Vancouver Waiting for Placement - Last 30 Days All Railways



Port Terminal Status

Prince Rupert

Daily Activity for 12/3/2018

	Cars Arrived	Cars Received in Interchange	Cars Delivered in Interchange	Cars Placed for Unloading	Loads on Wheels at Destination As of 12/3/2018
CN	24			24	129

Port Unloads

	12/03	12/02	Week To Date	Last Week
CN	185	247	185	1,369

Age Profile of Loaded Cars Waiting Placement for Unloading

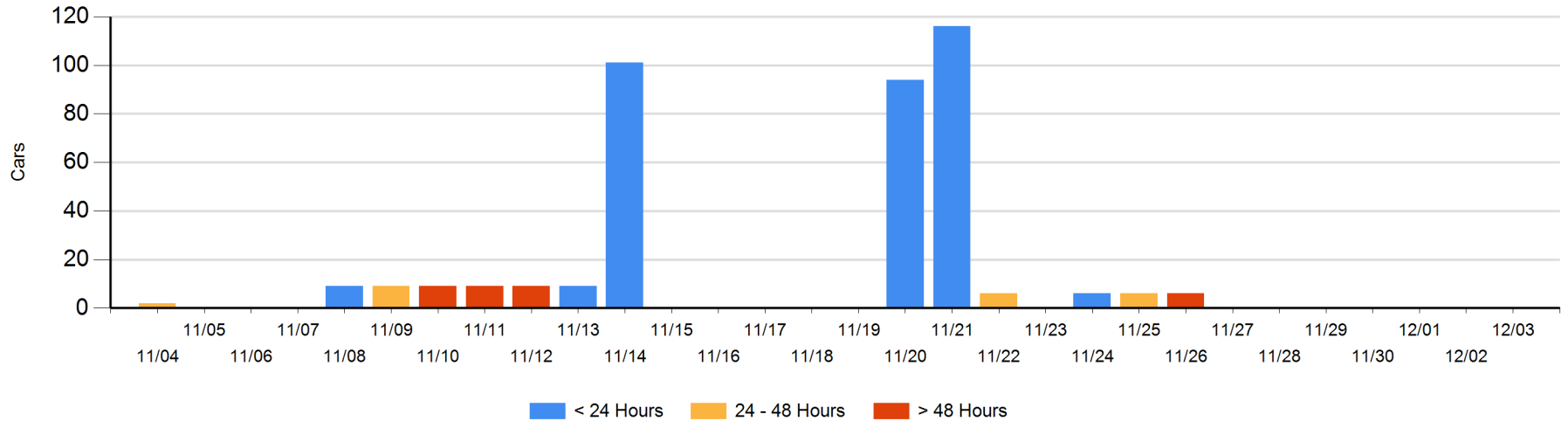
Today

	< 24 Hrs	24 - 48 Hrs	> 48-72 Hrs	> 72 Hrs	Total On Hand
CN					0

Change in Last 24 Hours

	< 24 Hrs	24-48 Hrs	48 - 72 Hrs	> 72 Hrs
CN				

Loaded Cars on Hand Prince Rupert Waiting for Placement - Last 30 Days All Railways



Port Terminal Status

Thunder Bay

Daily Activity for 12/3/2018

	Cars Arrived	Cars Received in Interchange	Cars Delivered in Interchange	Cars Placed for Unloading	Loads on Wheels at Destination As of 12/3/2018
CN				35	265
CP	112			157	550

Port Unloads

	12/03	12/02	Week To Date	Last Week
CN	59		59	765
CP	165	221	165	1,392

Age Profile of Loaded Cars Waiting Placement for Unloading

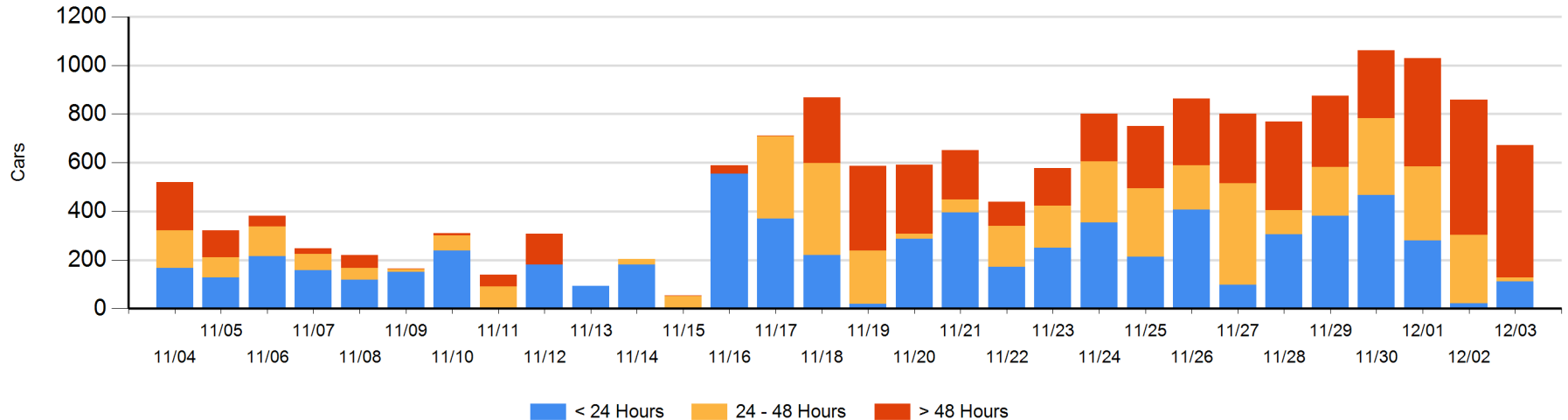
Today

	< 24 Hrs	24 - 48 Hrs	> 48-72 Hrs	> 72 Hrs	Total On Hand
CN		16	192	4	212
CP	112		88	260	460

Change in Last 24 Hours

	< 24 Hrs	24-48 Hrs	48 - 72 Hrs	> 72 Hrs
CN	-22	-176	192	-29
CP	112	-88	-167	-8

Loaded Cars on Hand Thunder Bay Waiting for Placement - Last 30 Days All Railways



Measurement Definitions

Loads on Wheels	<p>Count of loaded rail cars including all rail cars that have been released loaded at origin and have not been reported by the railway as unloaded at destination.</p> <p>Counts include all rail cars (hopper cars and boxcars) moving within a pipeline.</p>
Loads Not Moving	<p>Loaded rail cars for which the railways have not reported a movement event for 48 hours or more whether the rail car is at origin, enroute or at destination.</p>
Port Unloads	<p>Count of rail cars reported by railways as unloaded at the western port destinations of Vancouver, Prince Rupert and Thunder Bay.</p> <p>Unload counts include all rail cars (hopper cars and boxcars) unloaded by all receivers including major port terminals, transloaders and other receivers.</p>
Cars Arrived	<p>Count of rail cars reported as arrived at the destination railway terminal.</p>
Cars Received in Interchange	<p>Count of rail cars received in interchange by each railway within a destination railway terminal. Interchange activity is tracked for the Vancouver and Thunder Bay pipelines as applicable.</p>
Cars Delivered in Interchange	<p>Count of rail cars delivered in interchange by each railway within a destination railway terminal. Interchange activity is tracked for the Vancouver and Thunder Bay pipelines as applicable.</p>
Cars Placed for Unloading	<p>Count of rail cars reported by the railways as placed loaded at the receiver's facility for unloading.</p>
Loads on Wheels at Destination	<p>Count of rail cars that remain under load within the destination railway terminal including rail cars that have been reported as placed for unloading but not yet reported as unloaded.</p>
Waiting Placement for Unloading	<p>Count of rail cars that have been reported as arrived at the destination railway terminal but not reported as placed for unloading by the railway.</p> <p>For the Ports of Vancouver, Prince Rupert and Thunder Bay the count of rail cars waiting placement for unloading is categorized by age – i.e. the elapsed time from arrival at destination to the current report date.</p>