

SPEED READ

- Loads on wheels increased slightly overnight, marking a rise in CN volumes offset by reduced CP volumes. On a net basis, volumes increased due to higher traffic in the Prince Rupert and Vancouver corridors offset by lower traffic in the Thunder Bay and E. Canada corridors.
- Network fluidity improved overnight, led by a decline in idle car counts on both CN and CP by 2% (-50) and 10% (-166), respectively. The total count of cars for 4+ days on both railways increased 16% (+273) overnight - now at 1,982 cars, the highest seen in the last 30 days.
- Four days in Week 19 unloads now ahead of prior week's performance by about 300 unloads, marking improved week over week performance at Vancouver offset by reduced unloads at Thunder Bay and Prince Rupert.

Loads on Wheels

- Loads on wheels increased marginally by 2% (+213) overnight, due to reduced traffic on CP offset by higher volumes on CN - combined total at 12,024 and in line with the trailing 30-day average.
- On a net basis, the rise in loads on wheels indicates higher traffic in the Prince Rupert and Vancouver corridors offset by reduced traffic in the Thunder Bay and E. Canada corridors.
- CN volumes increased 5% (+298) overnight, with higher volumes in the Prince Rupert and Vancouver corridors offset by lower traffic in the Thunder Bay, E. Canada and USA/MEX corridors. System wide CN loads on wheels presently at 6,580 and 6% above the trailing 30-day average.
- CP volumes declined marginally by 1% (-71) overnight, driven by a decline in traffic in the Thunder Bay and E. Canada corridors offset by a rise in traffic in the USA/MEX and Vancouver corridors. CP system wide loads on wheels currently at 5,233 and 6% below the trailing 30-day average.
- Vancouver presently at 7,653, rose marginally by 1% (+61) overnight, now 3% above the trailing 30-day average.
- The Prince Rupert pipeline presently at 1,797, rose significantly by 21% (+312) overnight, and 19% above the trailing 30-day average.
- Thunder Bay volumes fell for the third consecutive day, down 7% (-131) overnight - now at 1,769 and 6% below the trailing 30-day average, with 65% of traffic moving on CP.

Hopper Car Rationing

- CN rationed 184 hopper cars in week 17.
- CN rationed 280 hopper cars in week 18.

Loads Not Moving

- **The count of cars not moving for 48+ hours decreased 6% (-216) overnight, marking reduced counts on both CN and CP. Idle car counts presently at 3,688 and 34% above the trailing 30-day average.**
- CN
 - **The count of idle cars for 48+ hours fell 2% (-50) overnight - presently at 2,246 cars.**
 - The number of cars idle for 4+ days rose significantly by 54% (+457) overnight - presently at 1,307 cars, the highest seen in the last 30 days.
 - The count of cars not moving for 7+ days rose for the third consecutive day, up 73% (+113) overnight - now at 268 cars.
 - Vancouver represents 71% of all idle cars.
 - In total 58% of all idle cars are dwelling at origin locations.
- CP
 - **CP idle car counts for 48+ hours decreased 10% (-166) overnight - presently at 1,442 cars.**

- The number of cars idle for 4+ days declined 21% (-184) overnight - currently at 675 cars.
- The number of cars idle for 7+ days increased 17% (+40) overnight and have now increased for the third consecutive day - currently at 270 cars.
- Vancouver accounts for 66% of all idle cars.
- In total 63% of all idle cars are dwelling at origin locations.

Port Performance

- CN and CP reported a total of 1,560 cars unloaded at the three major ports, the highest seen in the last 30 days, now 24% above the trailing 30-day average. Four days in Week 19 unloads now ahead of last week's pace by about 300 unloads, marking higher unloads at Vancouver offset by reduced unloads at Thunder Bay and Prince Rupert.
- Vancouver
 - 1,015 unloads reported by CN and CP at the Port of Vancouver; CN - 489 and CP - 526. Four days in Week 19 unloads are tracking ahead of last week's performance by 400 unloads.
 - There are 1,350 cars on site at Vancouver with more than 750 cars arriving at the port in the last 24 hours.
 - CN and CP have 2,000 cars in British Columbia en route to Vancouver, with 850 cars at Kamloops and west, and 51% of traffic moving on CP.
- Prince Rupert
 - Prince Rupert reported 182 unloads, now behind last week's unloads after four days by 4 unloads.
 - Loads on wheels now above 1,000 cars - currently at 1,797 cars.
 - There are about 500 cars west of Jasper en route to Prince Rupert.
 - There are fewer than 50 cars on site at Prince Rupert with more than 100 cars arriving at the port in the last 24 hours. Given the structure of the pipeline, there appears to be sufficient cars available to support unloads in the next few days.
- Thunder Bay
 - 363 unloads were reported at Thunder Bay yesterday. Four days in Week 19 unloads are tracking behind last week's pace by 100 unloads.
 - There are 750 cars on site at Thunder Bay with more than 100 cars arriving at the port in the prior 24 hours.
 - There are 200 cars en route to Thunder Bay from Winnipeg and east. Cars on hand and those en route should support unloads for the balance of the week.

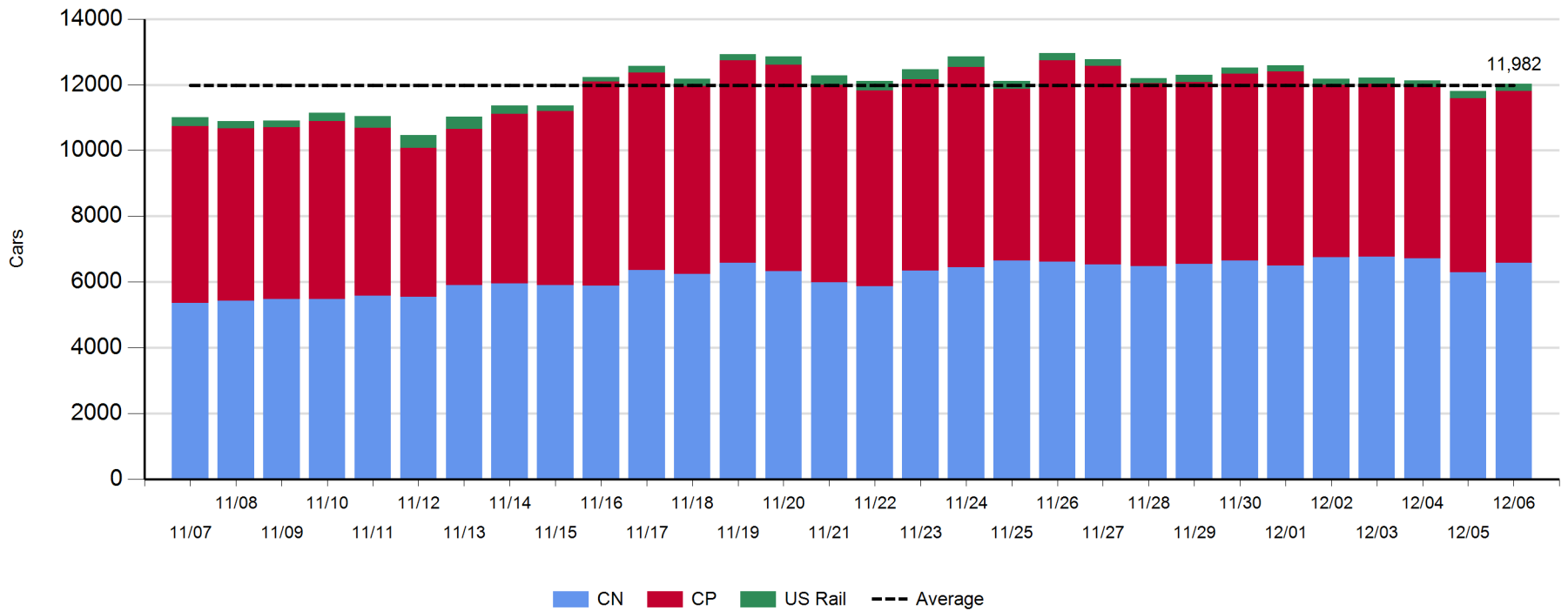
Daily Loads on Wheels - 12/6/2018

	E Canada	Prince Rupert	Thunder Bay	USA/MEX	Vancouver	Total
CN	130	1,797	617	195	3,841	6,580
CP	56		1,152	270	3,755	5,233
Short Line	5				57	62
US Rail				149		149
	191	1,797	1,769	614	7,653	12,024

Change in Loads on Wheels - Prior 24 Hours

	E Canada	Prince Rupert	Thunder Bay	USA/MEX	Vancouver	Total
CN	-13	312	-42	-8	49	298
CP	-13		-89	21	10	-71
Short Line	-3				2	-1
US Rail				-13		-13
	-29	312	-131	0	61	213

Loads on Wheels - Prior 30 Days

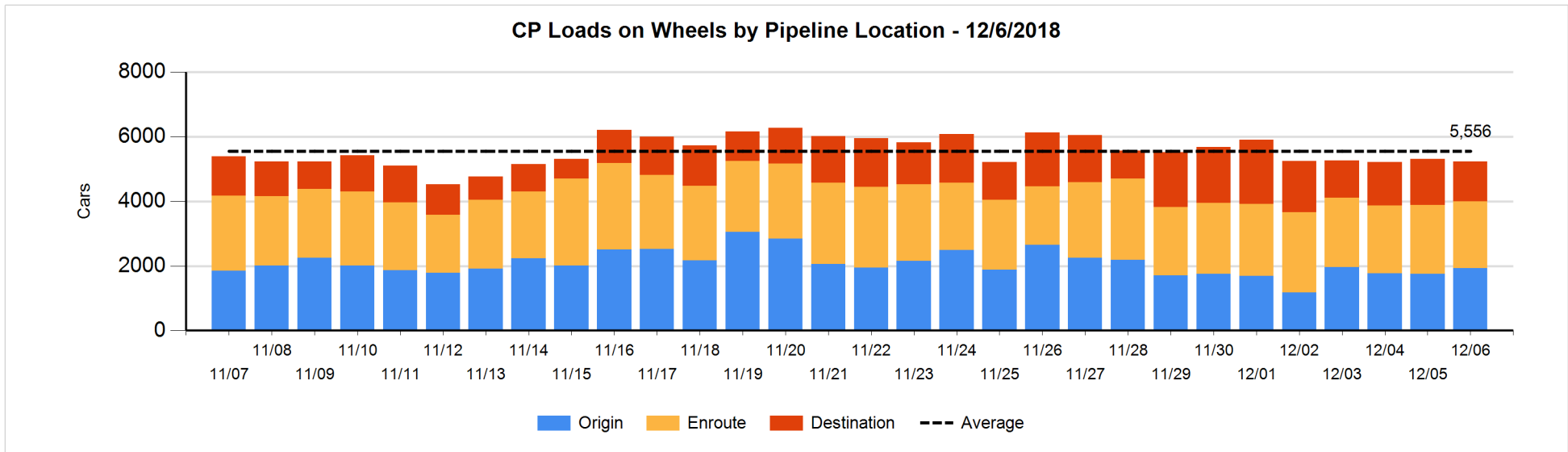
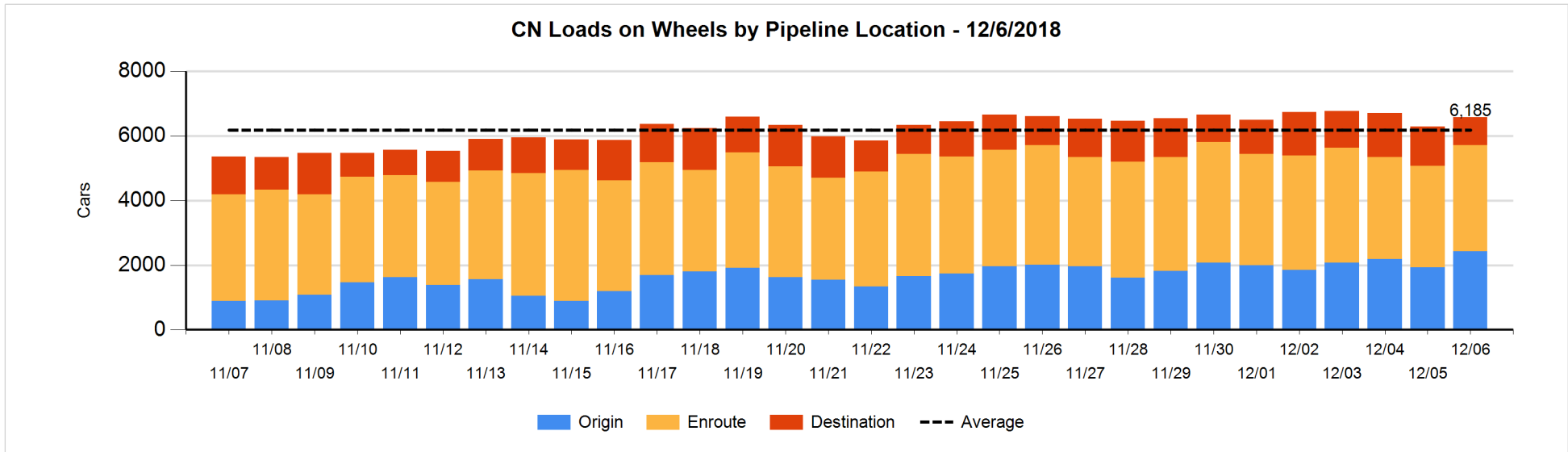


Daily Loads on Wheels By Pipeline Location - 12/6/2018

	E Canada	Prince Rupert	Thunder Bay	USA/MEX	Vancouver	Total
CN						
Origin	7	735	191	81	1,405	2,419
Enroute	109	1,025	190	105	1,870	3,299
Destination	14	37	236	9	566	862
	130	1,797	617	195	3,841	6,580
CP						
Origin	43		451	41	1,399	1,934
Enroute	13		197	215	1,638	2,063
Destination			504	14	718	1,236
	56		1,152	270	3,755	5,233
US Rail / Short Line						
Origin						
Enroute				78		78
Destination	5			71	57	133
	5			149	57	211

Change in Daily Loads on Wheels By Pipeline Location - Prior 24 Hours

	E Canada	Prince Rupert	Thunder Bay	USA/MEX	Vancouver	Total
CN						
Origin	-8	287	-31	-9	256	495
Enroute	-8	80	46	-3	40	155
Destination	3	-55	-57	4	-247	-352
	-13	312	-42	-8	49	298
CP						
Origin	1		82	-122	212	173
Enroute	-13		11	130	-195	-67
Destination	-1		-182	13	-7	-177
	-13		-89	21	10	-71
US Rail / Short Line						
Origin						
Enroute				5		5
Destination	-3			-18	2	-19
	-3			-13	2	-14

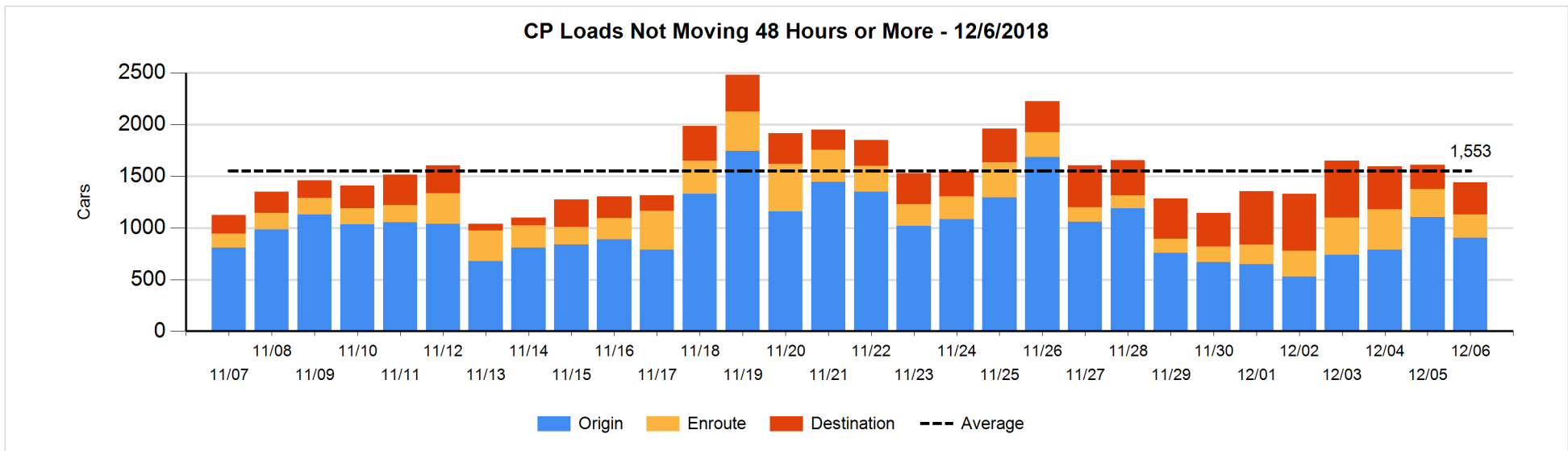
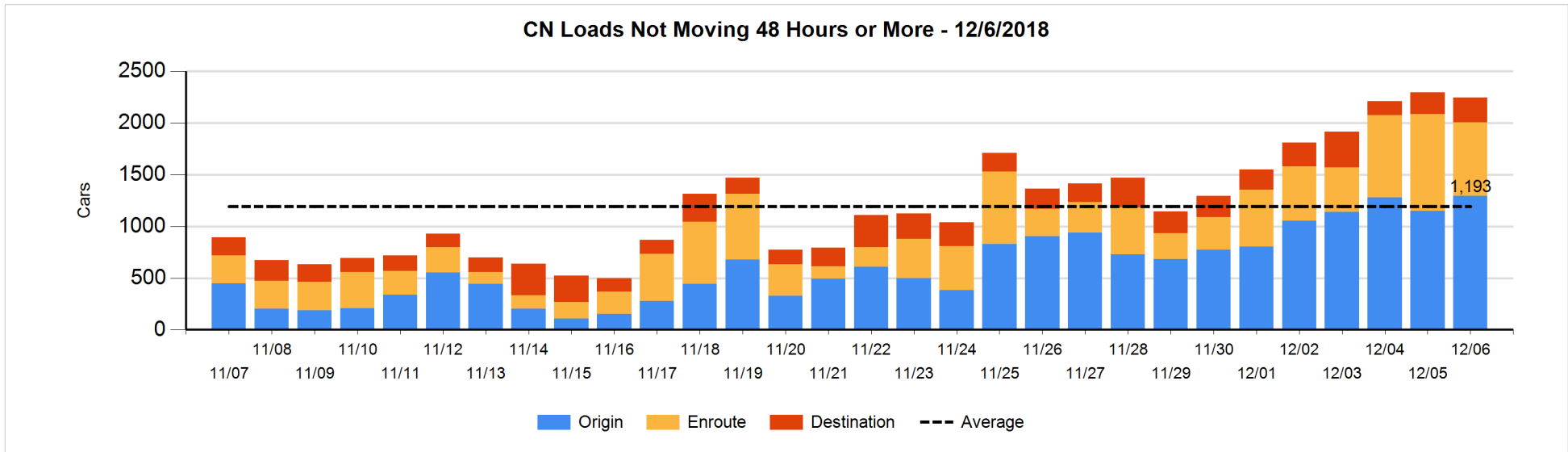


Loads Not Moving 48 Hours or More - 12/6/2018

	E Canada	Prince Rupert	Thunder Bay	USA/MEX	Vancouver	Total
CN						
Origin	7	240	161	54	834	1296
Enroute	25	3	100	13	570	711
Destination	6	27	15	2	189	239
	38	270	276	69	1593	2246
CP						
Origin	26		79	13	787	905
Enroute	4		69	43	109	225
Destination			254	1	57	312
	30		402	57	953	1442
US Rail / Short Line						
Origin						
Enroute				19		19
Destination				29	16	45
				48	16	64

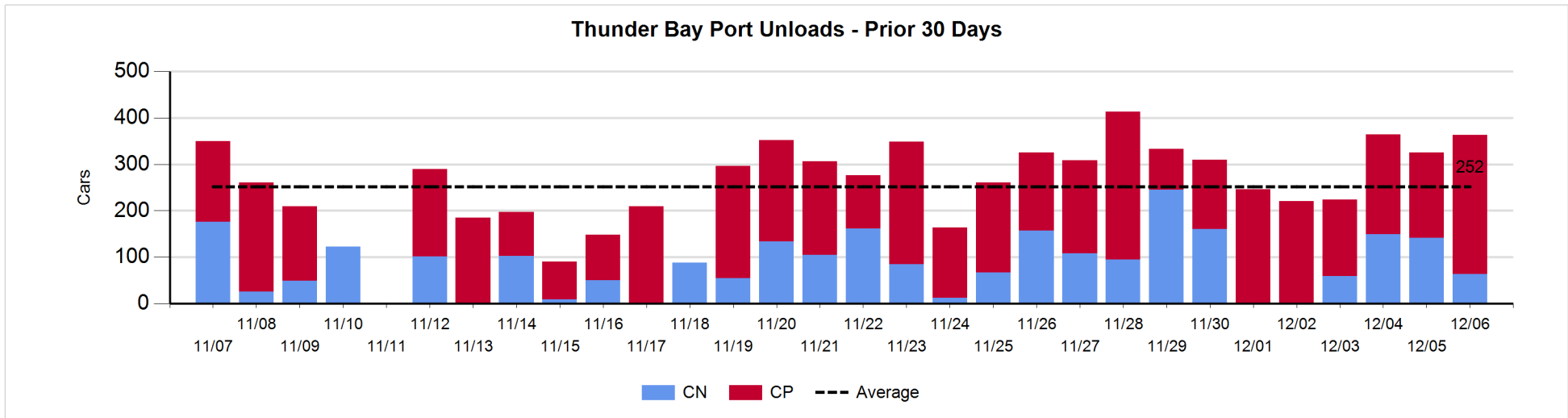
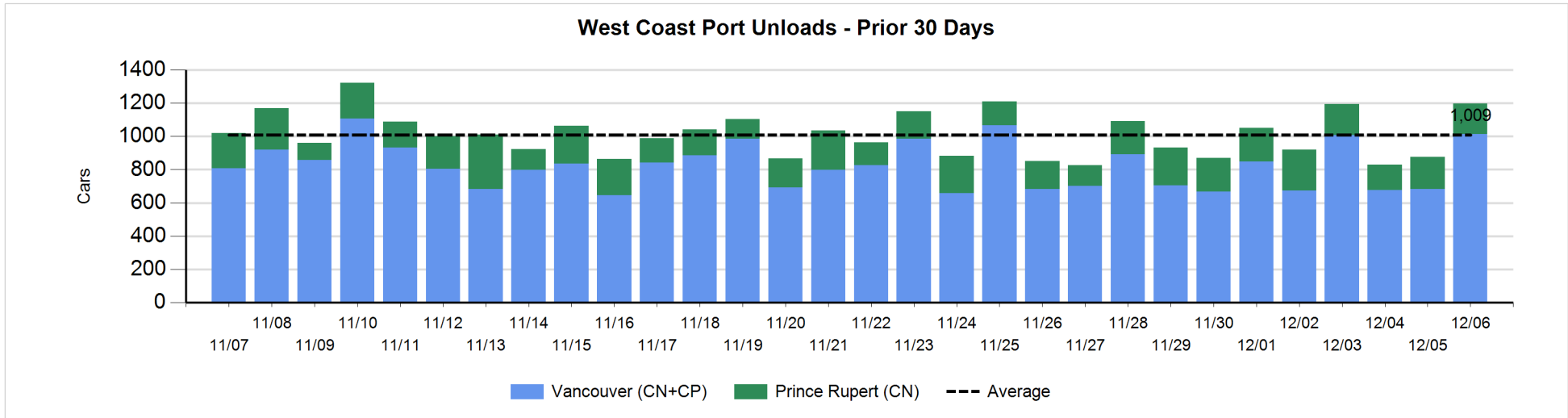
Change in Loads Not Moving 48 Hours or More - 12/6/2018

	E Canada	Prince Rupert	Thunder Bay	USA/MEX	Vancouver	Total
CN						
Origin	7	-6	109	50	-15	145
Enroute	21	0	49	4	-298	-224
Destination	6	4	-26	-1	46	29
	34	-2	132	53	-267	-50
CP						
Origin	0		26	-147	-76	-197
Enroute	-3		58	-29	-75	-49
Destination			105	0	-25	80
	-3		189	-176	-176	-166
US Rail / Short Line						
Origin						
Enroute				0		0
Destination				7	8	15
				7	8	15



Port Unloads - 12/6/2018

	Prince Rupert	Vancouver	West Coast Total	Thunder Bay	Total
CN	182	489	671	64	735
CP		526	526	299	825
	182	1,015	1,197	363	1,560



Port Terminal Status

Vancouver

Daily Activity for 12/6/2018

	Cars Arrived	Cars Received in Interchange	Cars Delivered in Interchange	Cars Placed for Unloading	Loads on Wheels at Destination As of 12/6/2018
CN	182	111	71	317	566
CP	594	61	118	452	718
SRY		17		10	57

Port Unloads

	12/06	12/05	Week To Date	Last Week
CN	489	298	1,589	2,394
CP	526	384	1,792	2,776
SRY	14	5	45	56

Age Profile of Loaded Cars Waiting Placement for Unloading

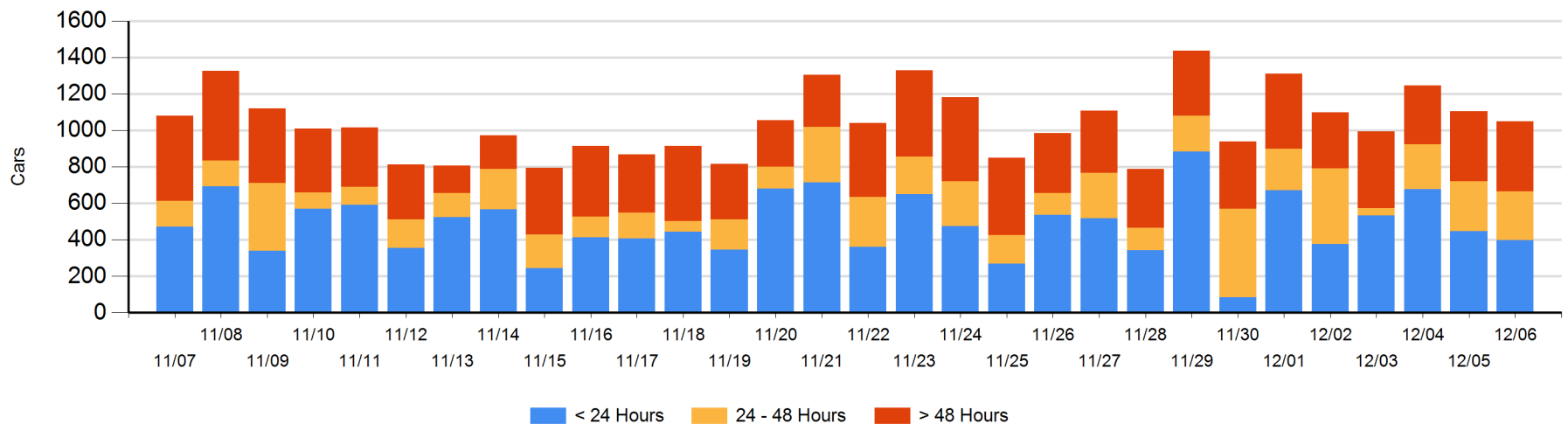
Today

	< 24 Hrs	24 - 48 Hrs	> 48-72 Hrs	> 72 Hrs	Total On Hand
CN	80	50	84	204	418
CP	317	199		84	600
SRY		19	11	1	31

Change in Last 24 Hours

	< 24 Hrs	24-48 Hrs	48 - 72 Hrs	> 72 Hrs
CN	-28	-193	-41	111
CP	-3	179	-62	-17
SRY	-19	7	11	0

Loaded Cars on Hand Vancouver Waiting for Placement - Last 30 Days All Railways



Port Terminal Status

Prince Rupert

Daily Activity for 12/6/2018

	Cars Arrived	Cars Received in Interchange	Cars Delivered in Interchange	Cars Placed for Unloading	Loads on Wheels at Destination As of 12/6/2018
CN	127			127	37

Port Unloads

	12/06	12/05	Week To Date	Last Week
CN	182	194	714	1,369

Age Profile of Loaded Cars Waiting Placement for Unloading

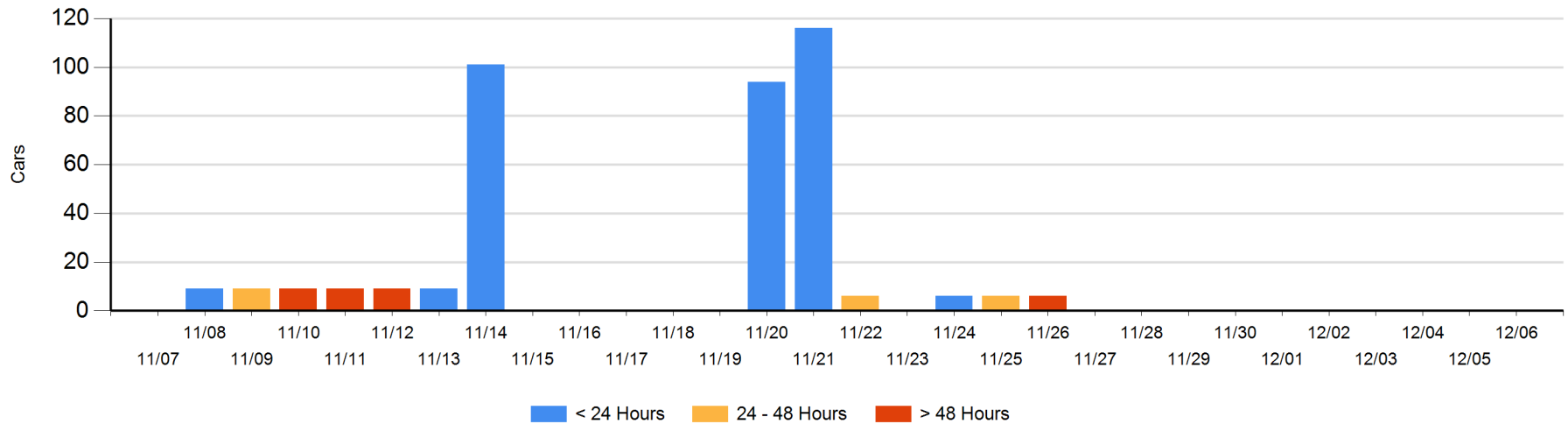
Today

	< 24 Hrs	24 - 48 Hrs	> 48-72 Hrs	> 72 Hrs	Total On Hand
CN					0

Change in Last 24 Hours

	< 24 Hrs	24-48 Hrs	48 - 72 Hrs	> 72 Hrs
CN				

Loaded Cars on Hand Prince Rupert Waiting for Placement - Last 30 Days All Railways



Port Terminal Status

Thunder Bay

Daily Activity for 12/6/2018

	Cars Arrived	Cars Received in Interchange	Cars Delivered in Interchange	Cars Placed for Unloading	Loads on Wheels at Destination As of 12/6/2018
CN	7			170	236
CP	117			263	504

Port Unloads

	12/06	12/05	Week To Date	Last Week
CN	64	141	413	765
CP	299	184	863	1,392

Age Profile of Loaded Cars Waiting Placement for Unloading

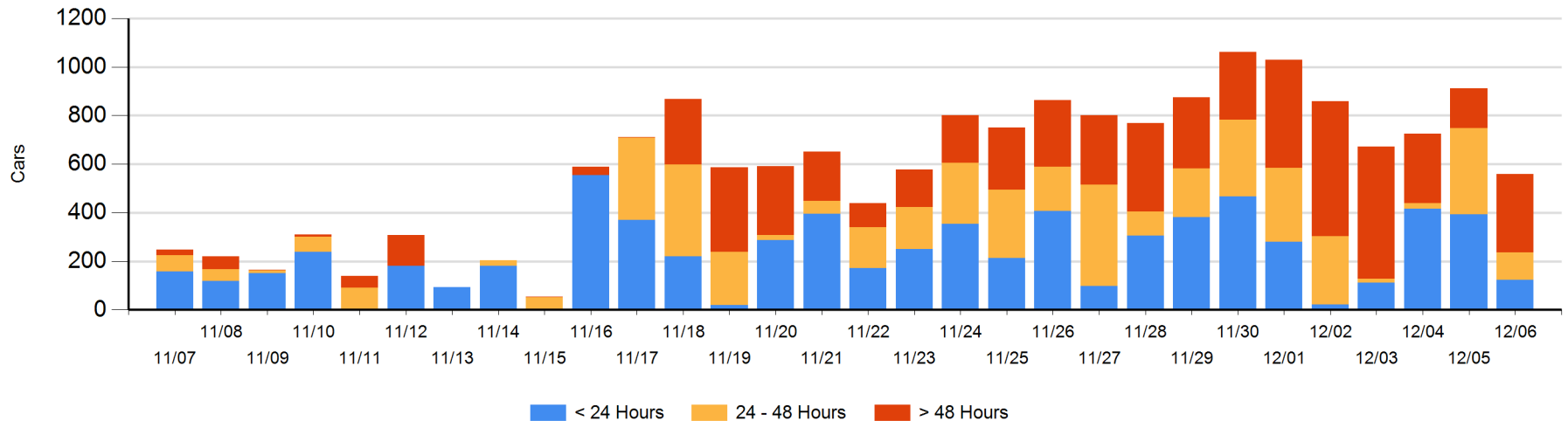
Today

	< 24 Hrs	24 - 48 Hrs	> 48-72 Hrs	> 72 Hrs	Total On Hand
CN	6	21	59	14	100
CP	117	93	161	88	459

Change in Last 24 Hours

	< 24 Hrs	24-48 Hrs	48 - 72 Hrs	> 72 Hrs
CN	-133	-87	59	-2
CP	-136	-156	161	-58

Loaded Cars on Hand Thunder Bay Waiting for Placement - Last 30 Days All Railways



Measurement Definitions

Loads on Wheels	<p>Count of loaded rail cars including all rail cars that have been released loaded at origin and have not been reported by the railway as unloaded at destination.</p> <p>Counts include all rail cars (hopper cars and boxcars) moving within a pipeline.</p>
Loads Not Moving	<p>Loaded rail cars for which the railways have not reported a movement event for 48 hours or more whether the rail car is at origin, enroute or at destination.</p>
Port Unloads	<p>Count of rail cars reported by railways as unloaded at the western port destinations of Vancouver, Prince Rupert and Thunder Bay.</p> <p>Unload counts include all rail cars (hopper cars and boxcars) unloaded by all receivers including major port terminals, transloaders and other receivers.</p>
Cars Arrived	<p>Count of rail cars reported as arrived at the destination railway terminal.</p>
Cars Received in Interchange	<p>Count of rail cars received in interchange by each railway within a destination railway terminal. Interchange activity is tracked for the Vancouver and Thunder Bay pipelines as applicable.</p>
Cars Delivered in Interchange	<p>Count of rail cars delivered in interchange by each railway within a destination railway terminal. Interchange activity is tracked for the Vancouver and Thunder Bay pipelines as applicable.</p>
Cars Placed for Unloading	<p>Count of rail cars reported by the railways as placed loaded at the receiver's facility for unloading.</p>
Loads on Wheels at Destination	<p>Count of rail cars that remain under load within the destination railway terminal including rail cars that have been reported as placed for unloading but not yet reported as unloaded.</p>
Waiting Placement for Unloading	<p>Count of rail cars that have been reported as arrived at the destination railway terminal but not reported as placed for unloading by the railway.</p> <p>For the Ports of Vancouver, Prince Rupert and Thunder Bay the count of rail cars waiting placement for unloading is categorized by age – i.e. the elapsed time from arrival at destination to the current report date.</p>