

## SPEED READ

- Loads on wheels decreased overnight, reflecting a decline in CN volumes offset by higher CP traffic. On a net basis, volumes decreased due to lower traffic in the Vancouver, Prince Rupert and USA/MEX corridors offset by higher traffic in the Thunder Bay and E. Canada corridors.
- Network fluidity improved overnight, led by a decline in idle car counts on both CN and CP by 2% (-44) and 17% (-209), respectively. The total count of cars for 4+ days on both railways declined for the third consecutive day, down 1% (-11) overnight - presently at 1,269 cars.
- Week 19 unloads concluded ahead of prior week's performance by 450 unloads, marking improved week over week performance at Vancouver offset by reduced unloads at Thunder Bay and Prince Rupert.

---

## Loads on Wheels

- Loads on wheels declined 5% (-562) overnight, due to reduced traffic on CN offset by higher traffic on CP - combined total at 11,405 and 5% below the trailing 30-day average.
- On a net basis, the decline in loads on wheels indicates lower traffic in the Vancouver, Prince Rupert and USA/MEX corridors offset by higher traffic in the Thunder Bay and E. Canada corridors.
- CN volumes decreased 9% (-600) overnight, with lower traffic across all corridors other than Thunder Bay. System wide CN loads on wheels now at 6,448 and 2% above the trailing 30-day average.
- CP volumes rose slightly by 1% (+52) overnight, driven by a rise in traffic in the Vancouver and E. Canada corridors offset by a decline in traffic in the Thunder Bay and USA/MEX corridors. CP system wide loads on wheels now at 4,699 and 15% below the trailing 30-day average.
- Vancouver currently at 6,991, declined 6% (-454) overnight, now 6% below the trailing 30-day average.
- The Prince Rupert pipeline now at 1,392, fell for the third consecutive day, down 7% (-110) overnight, and 9% below the trailing 30 day-average.
- Thunder Bay volumes rose slightly by 1% (+17) overnight and have now increased for the third consecutive day - presently at 2,007 and 3% above the trailing 30-day average, with 54% of traffic moving on CP.

## Hopper Car Rationing

- CN rationed 280 hopper cars in week 18.

## Loads Not Moving

- **The count of cars not moving for 48+ hours declined 8% (-253) overnight, marking reduced counts on both CN and CP. Idle car counts presently at 3,025 and 6% above the trailing 30-day average.**
- CN
  - **The count of idle cars for 48+ hours fell 2% (-44) overnight - now at 2,022 cars.**
  - The number of cars idle for 4+ days rose 5% (+49) overnight - currently at 944 cars.
  - The count of cars not moving for 7+ days increased 26% (+61) overnight - now at 294 cars, the highest seen in the last 30 days.
  - Vancouver represents 72% of all idle cars.
  - In total 64% of all idle cars are dwelling at origin locations.
- CP
  - **CP idle car counts for 48+ hours fell for the fourth consecutive day, down 17% (-209) overnight - now at 1,003 cars, the lowest seen in the last 30 days.**
  - The number of cars idle for 4+ days declined for the fifth consecutive day, down 16% (-60) overnight - now at 325 cars, the lowest seen in the last 30

days.

- The number of cars idle for 7+ days fell 14% (-27) overnight and have now decreased for the third consecutive day - presently at 160 cars.
- Vancouver accounts for 46% of all idle cars.
- In total 48% of all idle cars are dwelling at origin locations.

### **Port Performance**

- CN and CP reported a total of 1,191 cars unloaded at the three major ports, now 5% below the trailing 30 day-average. Week 19 unloads concluded ahead of last week's pace by 450 unloads, marking higher unloads at Vancouver offset by reduced unloads at Thunder Bay and Prince Rupert.
- Vancouver
  - 866 unloads reported by CN and CP at the Port of Vancouver; CN - 402 and CP - 464. Week 19 unloads concluded ahead of last week's performance by more than 700 unloads.
  - There are 1,400 cars on site at Vancouver with 950 cars arriving at the port in the last 24 hours.
  - CN and CP have 1,250 cars in British Columbia en route to Vancouver, with 500 cars at Kamloops and west, and 56% of traffic moving on CN.
- Prince Rupert
  - Prince Rupert reported 213 unloads, concluded behind last week's unloads by 50 unloads.
  - Loads on wheels now above 1,000 cars - currently at 1,392 cars.
  - There are 450 cars west of Jasper en route to Prince Rupert.
  - There are 50 cars on site at Prince Rupert with 150 cars arriving at the port in the last 24 hours. Given the structure of the pipeline, there appears to be sufficient cars available to support unloads in the next few days.
- Thunder Bay
  - 112 unloads were reported at Thunder Bay yesterday. Week 19 unloads ended behind last week's pace by fewer than 250 unloads.
  - There are less than 700 cars on site at Thunder Bay with more than 200 cars arriving at the port in the prior 24 hours.
  - There are more than 600 cars en route to Thunder Bay from Winnipeg and east. Cars on hand and those en route should support unloads in the next few days.

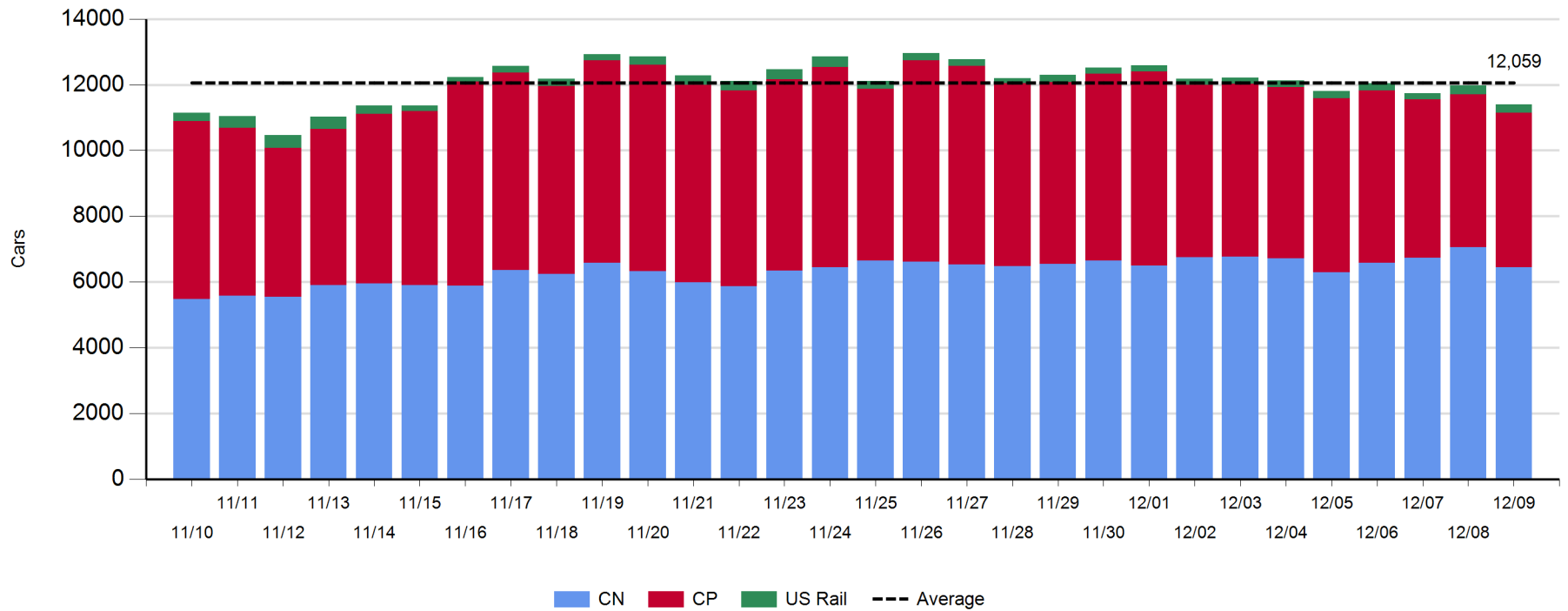
**Daily Loads on Wheels - 12/9/2018**

	E Canada	Prince Rupert	Thunder Bay	USA/MEX	Vancouver	Total
CN	315	1,392	930	259	3,552	6,448
CP	62		1,077	156	3,404	4,699
Short Line	11				35	46
US Rail				212		212
	388	1,392	2,007	627	6,991	11,405

**Change in Loads on Wheels - Prior 24 Hours**

	E Canada	Prince Rupert	Thunder Bay	USA/MEX	Vancouver	Total
CN	-20	-110	100	-1	-569	-600
CP	25		-83	-5	115	52
Short Line	6				0	6
US Rail				-20		-20
	11	-110	17	-26	-454	-562

**Loads on Wheels - Prior 30 Days**

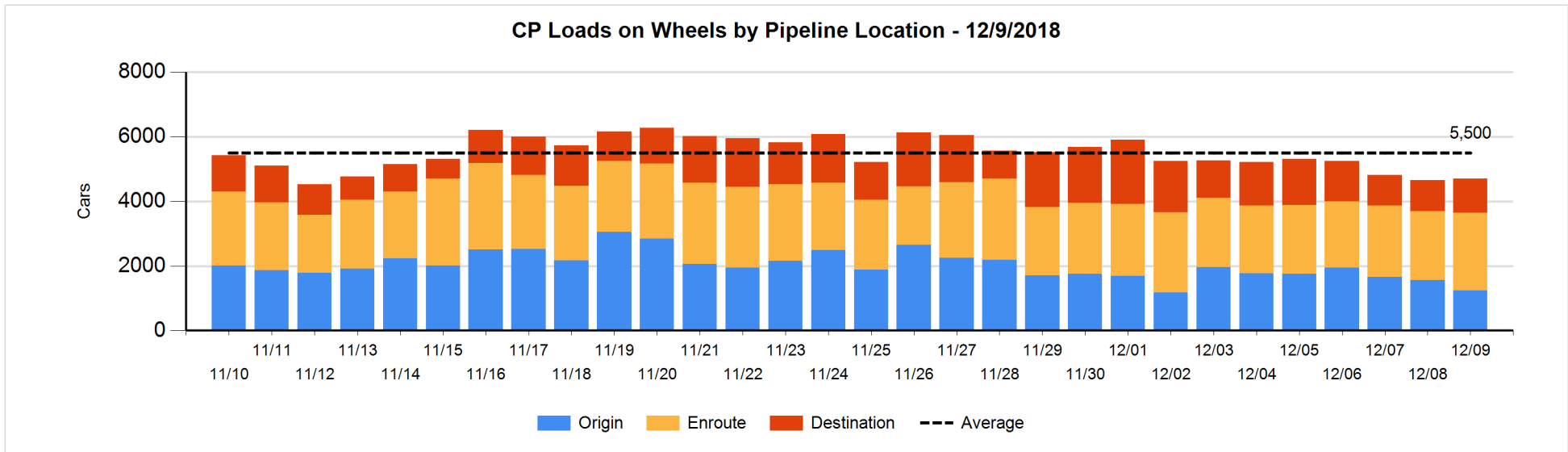
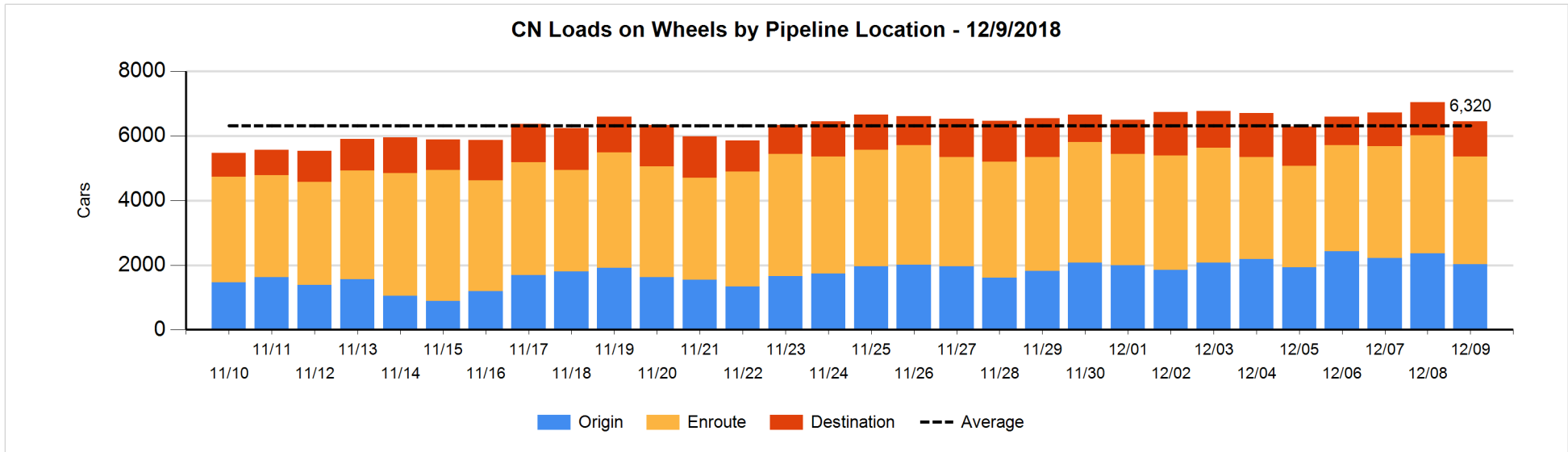


**Daily Loads on Wheels By Pipeline Location - 12/9/2018**

	E Canada	Prince Rupert	Thunder Bay	USA/MEX	Vancouver	Total
CN						
Origin	114	451	126	117	1,213	2,021
Enroute	178	892	551	125	1,593	3,339
Destination	23	49	253	17	746	1,088
	315	1,392	930	259	3,552	6,448
CP						
Origin	27		318	31	861	1,237
Enroute	35		327	122	1,918	2,402
Destination			432	3	625	1,060
	62		1,077	156	3,404	4,699
US Rail / Short Line						
Origin						
Enroute				176		176
Destination	11			36	35	82
	11			212	35	258

**Change in Daily Loads on Wheels By Pipeline Location - Prior 24 Hours**

	E Canada	Prince Rupert	Thunder Bay	USA/MEX	Vancouver	Total
CN						
Origin	-45	103	-280	-7	-118	-347
Enroute	32	-157	323	-1	-504	-307
Destination	-7	-56	57	7	53	54
	-20	-110	100	-1	-569	-600
CP						
Origin	25		-65	-4	-278	-322
Enroute	0		-77	4	348	275
Destination			59	-5	45	99
	25		-83	-5	115	52
US Rail / Short Line						
Origin						
Enroute				-4		-4
Destination	6			-16	0	-10
	6			-20	0	-14

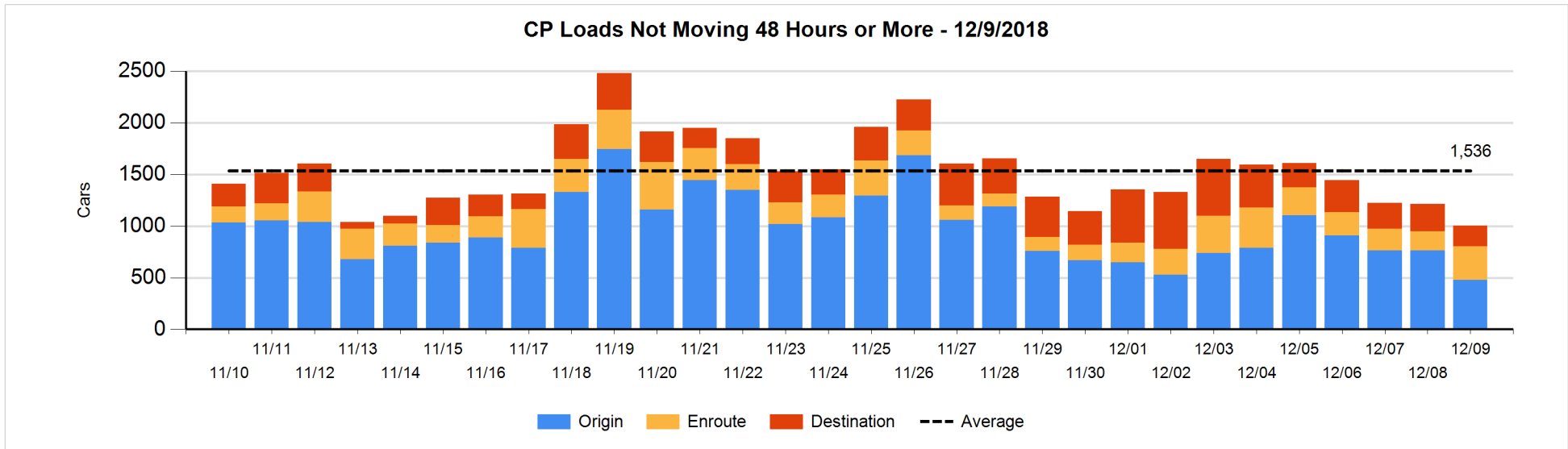
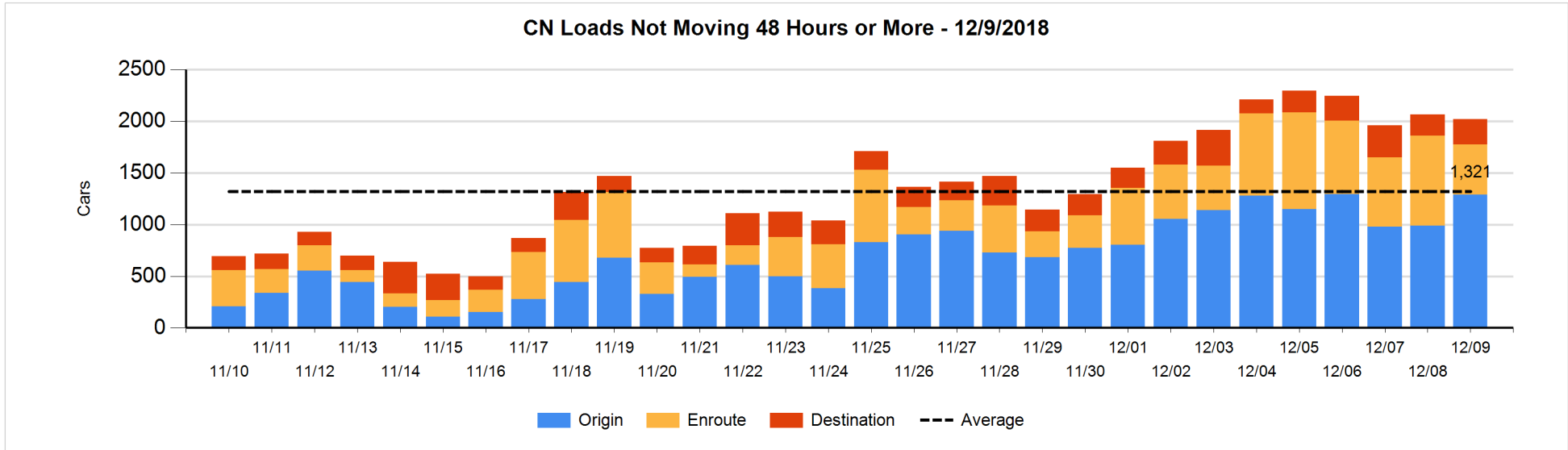


**Loads Not Moving 48 Hours or More - 12/9/2018**

	E Canada	Prince Rupert	Thunder Bay	USA/MEX	Vancouver	Total
<b>CN</b>						
Origin	63	245	21	70	888	1287
Enroute	25	18	51	11	383	488
Destination	23		33	6	185	247
	111	263	105	87	1456	2022
<b>CP</b>						
Origin	2		290	30	157	479
Enroute	9		6	91	218	324
Destination			113	1	86	200
	11		409	122	461	1003
<b>US Rail / Short Line</b>						
Origin						
Enroute				41		41
Destination	4			32	30	66
	4			73	30	107

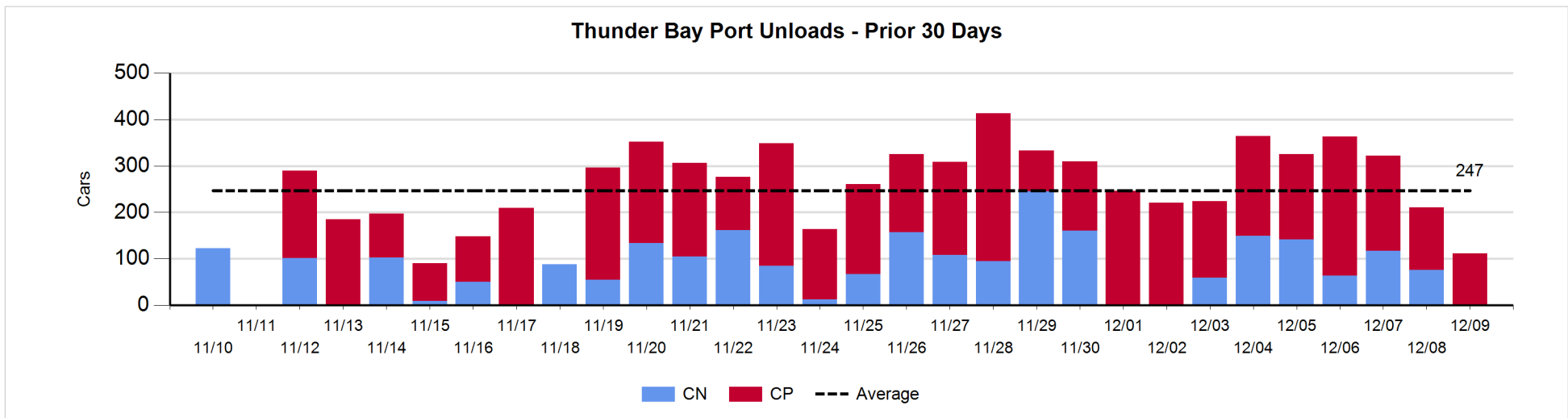
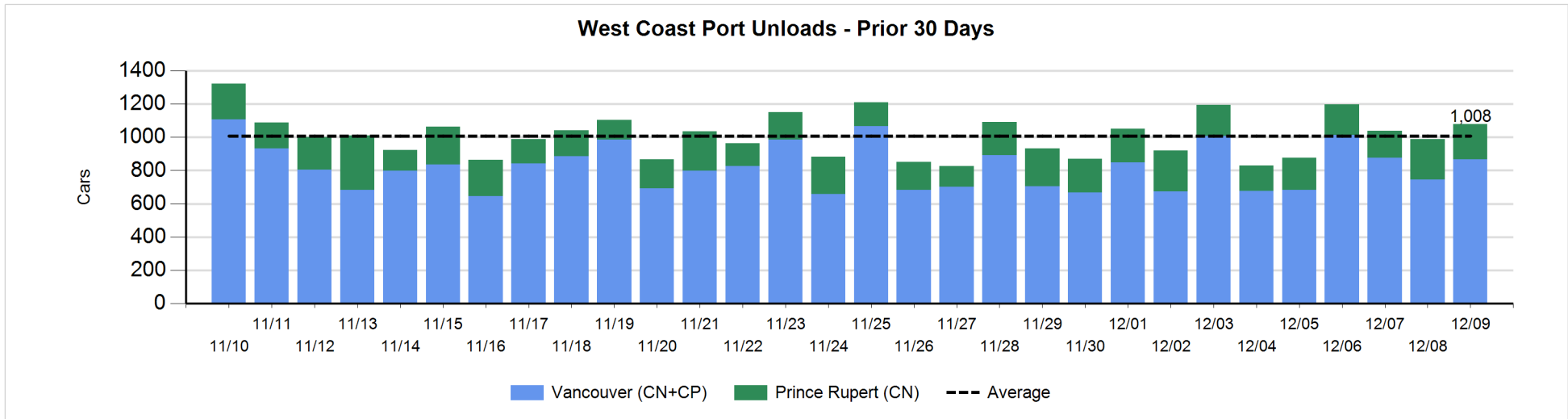
**Change in Loads Not Moving 48 Hours or More - 12/9/2018**

	E Canada	Prince Rupert	Thunder Bay	USA/MEX	Vancouver	Total
<b>CN</b>						
Origin	63	0	21	13	199	296
Enroute	5	-89	-19	-3	-273	-379
Destination	11		5	3	20	39
	79	-89	7	13	-54	-44
<b>CP</b>						
Origin	0		30	-2	-310	-282
Enroute	2		-2	9	128	137
Destination			-30	0	-34	-64
	2		-2	7	-216	-209
<b>US Rail / Short Line</b>						
Origin						
Enroute				11		11
Destination	-1			-9	0	-10
	-1			2	0	1



**Port Unloads - 12/9/2018**

	Prince Rupert	Vancouver	West Coast Total	Thunder Bay	Total
CN	213	402	615		615
CP		464	464	112	576
	213	866	1,079	112	1,191





**Port Terminal Status**

**Vancouver**

Daily Activity for 12/9/2018

	Cars Arrived	Cars Received in Interchange	Cars Delivered in Interchange	Cars Placed for Unloading	Loads on Wheels at Destination As of 12/9/2018
CN	624	45	220	352	746
CP	328	220	48	410	625
SRY		3		4	35

**Port Unloads**

	12/09	12/08	Week To Date	Last Week
CN	402	414	2,752	2,394
CP	464	332	3,118	2,776
SRY		10	79	56

**Age Profile of Loaded Cars Waiting Placement for Unloading**

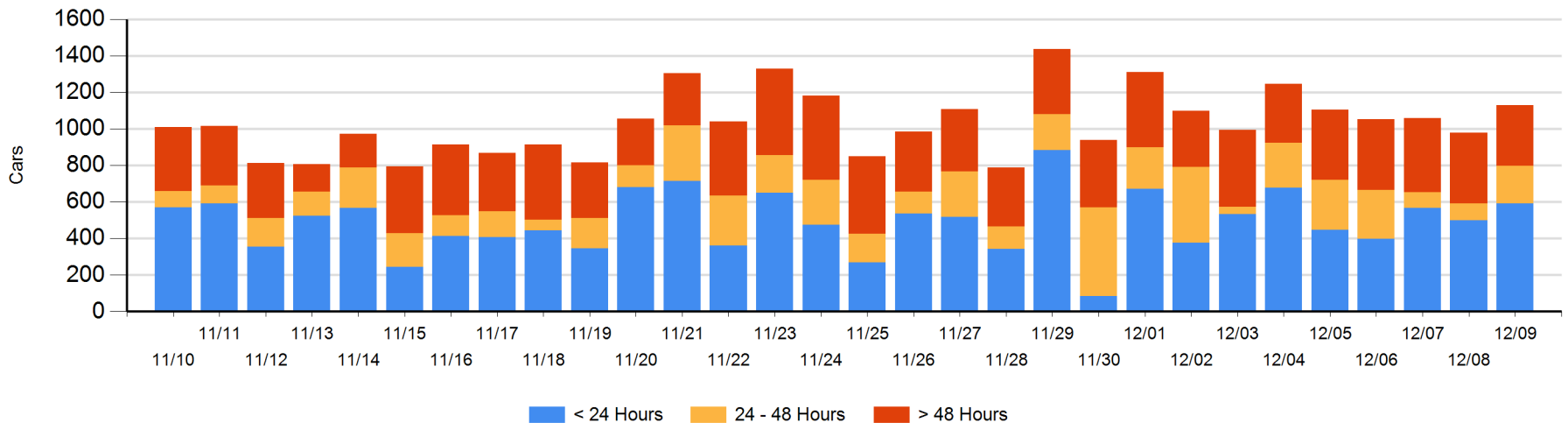
**Today**

	< 24 Hrs	24 - 48 Hrs	> 48-72 Hrs	> 72 Hrs	Total On Hand
CN	423	19	10	206	658
CP	168	189	17	78	452
SRY				20	20

**Change in Last 24 Hours**

	< 24 Hrs	24-48 Hrs	48 - 72 Hrs	> 72 Hrs
CN	274	-13	-13	4
CP	-180	128	-16	-27
SRY				-5

**Loaded Cars on Hand Vancouver Waiting for Placement - Last 30 Days All Railways**



**Port Terminal Status**

**Prince Rupert**

Daily Activity for 12/9/2018

	Cars Arrived	Cars Received in Interchange	Cars Delivered in Interchange	Cars Placed for Unloading	Loads on Wheels at Destination As of 12/9/2018
CN	157			157	49

**Port Unloads**

	12/09	12/08	Week To Date	Last Week
CN	213	242	1,329	1,369

**Age Profile of Loaded Cars Waiting Placement for Unloading**

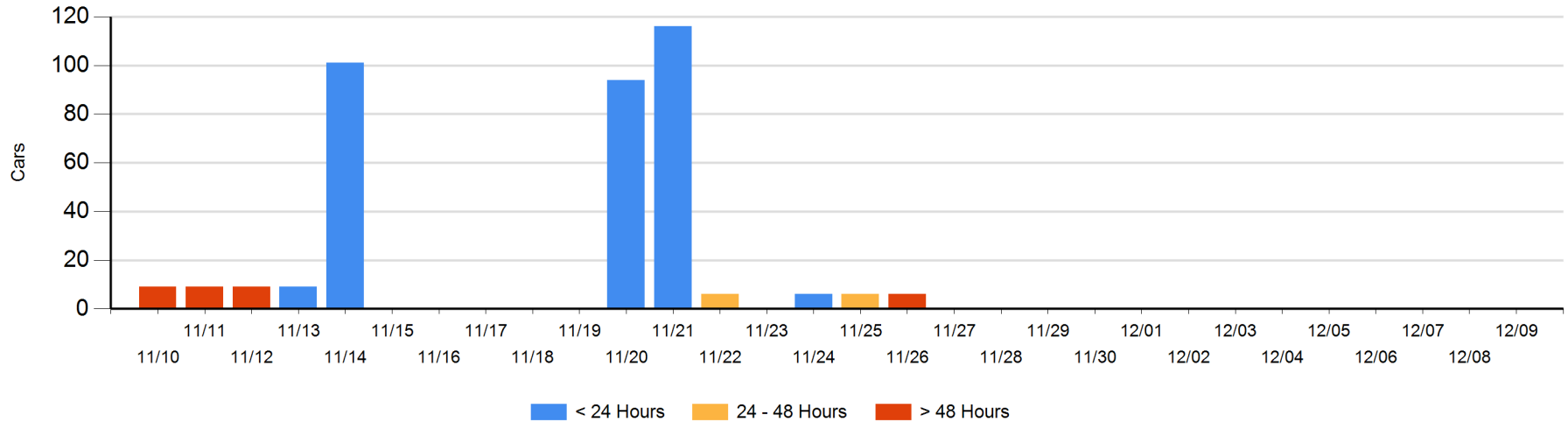
**Today**

	< 24 Hrs	24 - 48 Hrs	> 48-72 Hrs	> 72 Hrs	Total On Hand
CN					0

**Change in Last 24 Hours**

	< 24 Hrs	24-48 Hrs	48 - 72 Hrs	> 72 Hrs
CN				

Loaded Cars on Hand Prince Rupert Waiting for Placement - Last 30 Days All Railways



**Port Terminal Status**

**Thunder Bay**

Daily Activity for 12/9/2018

	Cars Arrived	Cars Received in Interchange	Cars Delivered in Interchange	Cars Placed for Unloading	Loads on Wheels at Destination As of 12/9/2018
CN	57			212	253
CP	169			246	432

**Port Unloads**

	12/09	12/08	Week To Date	Last Week
CN		76	606	765
CP	112	135	1,315	1,392

**Age Profile of Loaded Cars Waiting Placement for Unloading**

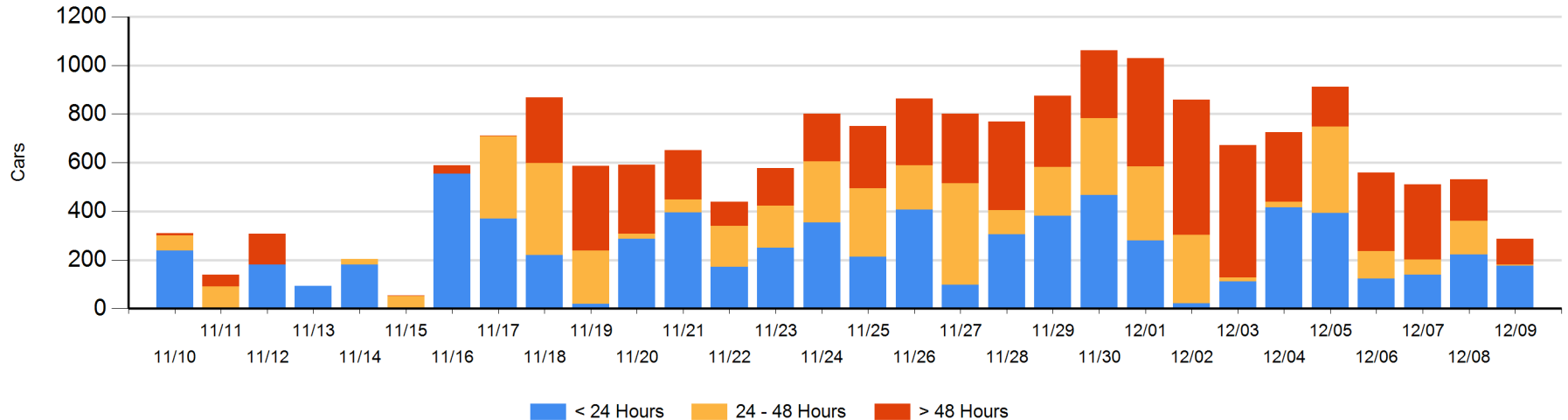
**Today**

	< 24 Hrs	24 - 48 Hrs	> 48-72 Hrs	> 72 Hrs	Total On Hand
CN	8		10		18
CP	169	3	63	33	268

**Change in Last 24 Hours**

	< 24 Hrs	24-48 Hrs	48 - 72 Hrs	> 72 Hrs
CN	-134	-10	10	-21
CP	89	-126	54	-108

**Loaded Cars on Hand Thunder Bay Waiting for Placement - Last 30 Days All Railways**



## Measurement Definitions

Loads on Wheels	<p>Count of loaded rail cars including all rail cars that have been released loaded at origin and have not been reported by the railway as unloaded at destination.</p> <p>Counts include all rail cars (hopper cars and boxcars) moving within a pipeline.</p>
Loads Not Moving	<p>Loaded rail cars for which the railways have not reported a movement event for 48 hours or more whether the rail car is at origin, enroute or at destination.</p>
Port Unloads	<p>Count of rail cars reported by railways as unloaded at the western port destinations of Vancouver, Prince Rupert and Thunder Bay.</p> <p>Unload counts include all rail cars (hopper cars and boxcars) unloaded by all receivers including major port terminals, transloaders and other receivers.</p>
Cars Arrived	<p>Count of rail cars reported as arrived at the destination railway terminal.</p>
Cars Received in Interchange	<p>Count of rail cars received in interchange by each railway within a destination railway terminal. Interchange activity is tracked for the Vancouver and Thunder Bay pipelines as applicable.</p>
Cars Delivered in Interchange	<p>Count of rail cars delivered in interchange by each railway within a destination railway terminal. Interchange activity is tracked for the Vancouver and Thunder Bay pipelines as applicable.</p>
Cars Placed for Unloading	<p>Count of rail cars reported by the railways as placed loaded at the receiver's facility for unloading.</p>
Loads on Wheels at Destination	<p>Count of rail cars that remain under load within the destination railway terminal including rail cars that have been reported as placed for unloading but not yet reported as unloaded.</p>
Waiting Placement for Unloading	<p>Count of rail cars that have been reported as arrived at the destination railway terminal but not reported as placed for unloading by the railway.</p> <p>For the Ports of Vancouver, Prince Rupert and Thunder Bay the count of rail cars waiting placement for unloading is categorized by age – i.e. the elapsed time from arrival at destination to the current report date.</p>