

## SPEED READ

- Loads on wheels increased overnight, marking higher CP traffic offset by a decline in CN volumes. On a net basis, volumes gained due to higher traffic in the Vancouver, Prince Rupert and Thunder Bay corridors offset by lower volumes in the E. Canada and USA/MEX corridors.
- Network fluidity deteriorated overnight, led by a rise in idle car counts on both CN and CP by 4% (+87) and 18% (+177), respectively. The total count of cars for 4+ days on both railways increased significantly by 57% (+715) overnight - now at 1,960 cars.
- One day in Week 20 unloads now behind prior week's performance by 100 unloads, marking lower unloads at Vancouver offset by improved week over week performance at Thunder Bay and Prince Rupert.

---

## Loads on Wheels

- Loads on wheels rose 4% (+510) overnight, due to higher volumes on CP offset by lower traffic on CN - combined total at 11,997 and 1% below the trailing 30-day average.
- On a net basis, the rise in loads on wheels reflects higher traffic in the Vancouver, Prince Rupert and Thunder Bay corridors offset by lower traffic in the E. Canada and USA/MEX corridors.
- CN volumes declined slightly (-9) overnight, with lower volumes in the Thunder Bay and E. Canada corridors offset by higher traffic in the Prince Rupert and Vancouver corridors. System wide CN loads on wheels now at 6,490 and 2% above the trailing 30-day average.
- CP volumes increased significantly by 11% (+500) overnight, driven by a rise in traffic in the Vancouver and Thunder Bay corridors offset by a decline in volumes in the USA/MEX and E. Canada corridors. CP system wide loads on wheels now at 5,230 and 5% below the trailing 30-day average.
- Vancouver now at 7,368, gained 5% (+375) overnight, now 2% below the trailing 30-day average.
- The Prince Rupert pipeline now at 1,481, rose 6% (+89) overnight, and 3% below the trailing 30 day-average.
- Thunder Bay volumes rose 4% (+87) overnight and have now increased for the fourth consecutive day - now at 2,170 and 10% above the trailing 30-day average, with 61% of traffic moving on CP.

## Hopper Car Rationing

- CN rationed 280 hopper cars in week 18.

## Loads Not Moving

- **The count of cars not moving for 48+ hours increased 9% (+264) overnight, marking higher counts on both CN and CP. Idle car counts presently at 3,345 and 15% above the trailing 30-day average.**
- CN
  - **The count of idle cars for 48+ hours gained for the third consecutive day, up 4% (+87) overnight - now at 2,159 cars.**
  - The number of cars idle for 4+ days rose significantly by 52% (+488) overnight - presently at 1,432 cars, the highest seen in the last 30 days.
  - The count of cars not moving for 7+ days gained significantly by 48% (+140) overnight and have now increased for the third consecutive day - now at 434 cars, the highest seen in the last 30 days.
  - Vancouver represents 72% of all idle cars.
  - In total 75% of all idle cars are dwelling at origin locations.
- CP
  - **CP idle car counts for 48+ hours increased 18% (+177) overnight - now at 1,186 cars.**
  - The number of cars idle for 4+ days surged by 75% (+227) overnight - presently at 528 cars.

- The number of cars idle for 7+ days rose 8% (+11) overnight - now at 147 cars.
- Vancouver accounts for 71% of all idle cars.
- In total 51% of all idle cars are dwelling at origin locations.

### **Port Performance**

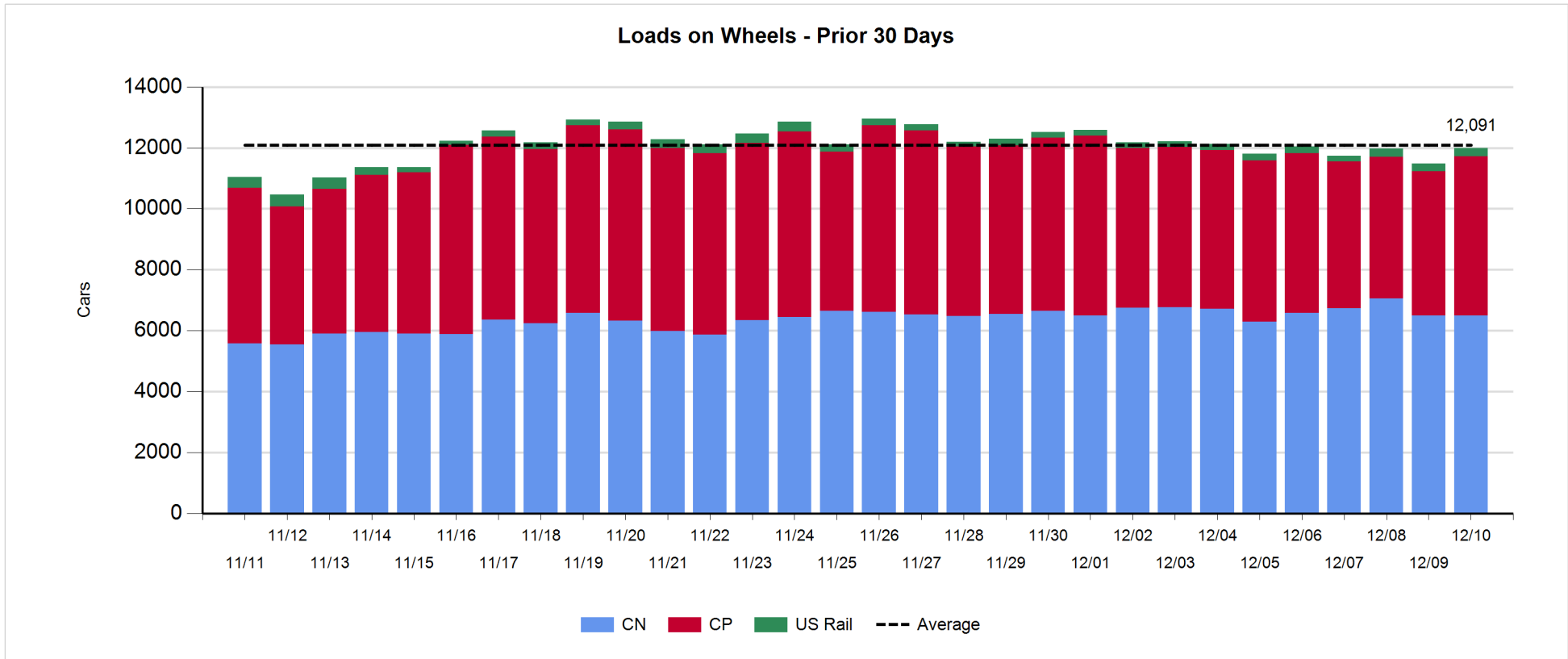
- CN and CP reported a total of 1,320 cars unloaded at the three major ports, now 5% above the trailing 30-day average. One day in Week 20 unloads now behind last week's pace by 100 unloads, marking lower unloads at Vancouver offset by higher unloads at Thunder Bay and Prince Rupert.
- Vancouver
  - 668 unloads reported by CN and CP at the Port of Vancouver; CN - 308 and CP - 360. One day in Week 20 unloads are tracking behind last week's performance by about 350 unloads.
  - There are fewer than 850 cars on site at Vancouver with more than 100 cars arriving at the port in the last 24 hours.
  - CN and CP have fewer than 2,050 cars in British Columbia en route to Vancouver, with fewer than 1,150 cars at Kamloops and west, and 50% of traffic moving on CN.
- Prince Rupert
  - Prince Rupert reported 218 unloads, now ahead of last week's unloads after one day by fewer than 50 unloads.
  - Loads on wheels now above 1,000 cars - now at 1,481 cars.
  - There are fewer than 550 cars west of Jasper en route to Prince Rupert.
  - There are about 100 cars on site at Prince Rupert with 250 cars arriving at the port in the last 24 hours. Given the structure of the pipeline, there appears to be sufficient cars available to support unloads in the next few days.
- Thunder Bay
  - 434 unloads, the highest seen in the last 30 days, were reported at Thunder Bay yesterday. One day in Week 20 unloads are tracking ahead of last week's pace by 200 unloads.
  - There are 650 cars on site at Thunder Bay with nearly 400 cars arriving at the port in the prior 24 hours.
  - There are fewer than 550 cars en route to Thunder Bay from Winnipeg and east. Cars on hand and those en route should support unloads in the next few days.

**Daily Loads on Wheels - 12/10/2018**

	E Canada	Prince Rupert	Thunder Bay	USA/MEX	Vancouver	Total
CN	284	1,481	851	259	3,615	6,490
CP	58		1,319	146	3,707	5,230
Short Line	22				46	68
US Rail				209		209
	364	1,481	2,170	614	7,368	11,997

**Change in Loads on Wheels - Prior 24 Hours**

	E Canada	Prince Rupert	Thunder Bay	USA/MEX	Vancouver	Total
CN	-31	89	-129	0	62	-9
CP	-8		216	-10	302	500
Short Line	11				11	22
US Rail				-3		-3
	-28	89	87	-13	375	510

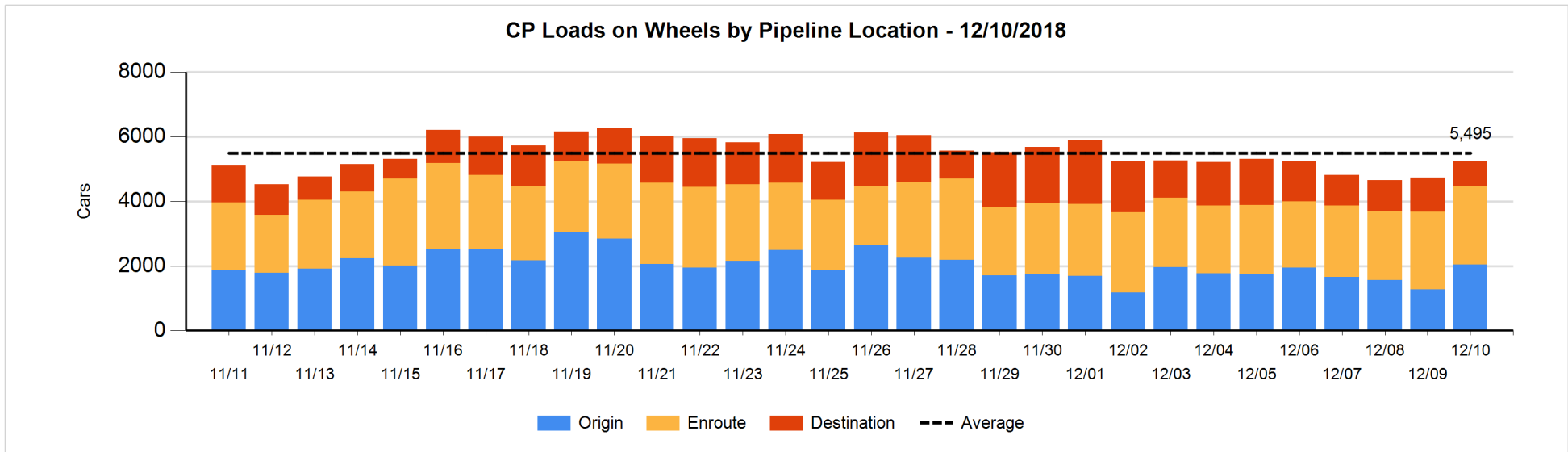
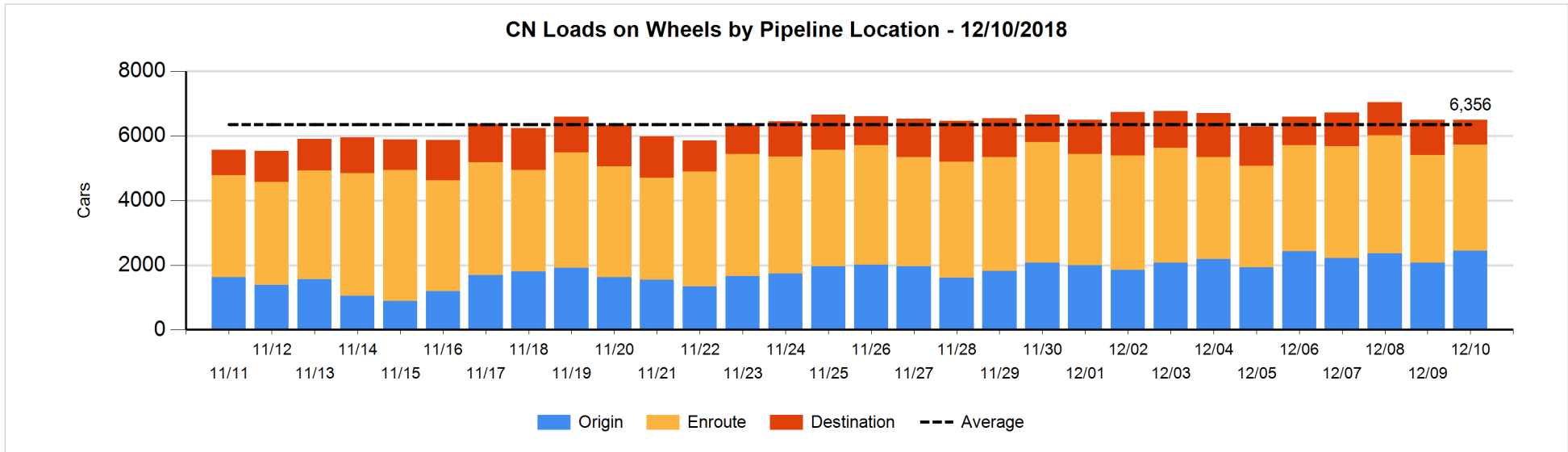


**Daily Loads on Wheels By Pipeline Location - 12/10/2018**

	E Canada	Prince Rupert	Thunder Bay	USA/MEX	Vancouver	Total
CN						
Origin	81	552	229	106	1,475	2,443
Enroute	188	846	499	143	1,607	3,283
Destination	15	83	123	10	533	764
	284	1,481	851	259	3,615	6,490
CP						
Origin	2		578	32	1,425	2,037
Enroute	56		223	111	2,031	2,421
Destination			518	3	251	772
	58		1,319	146	3,707	5,230
US Rail / Short Line						
Origin						
Enroute				78		78
Destination	22			131	46	199
	22			209	46	277

**Change in Daily Loads on Wheels By Pipeline Location - Prior 24 Hours**

	E Canada	Prince Rupert	Thunder Bay	USA/MEX	Vancouver	Total
CN						
Origin	-33	101	53	-11	262	372
Enroute	10	-46	-52	18	13	-57
Destination	-8	34	-130	-7	-213	-324
	-31	89	-129	0	62	-9
CP						
Origin	-29		234	1	563	769
Enroute	21		-104	-11	113	19
Destination			86	0	-374	-288
	-8		216	-10	302	500
US Rail / Short Line						
Origin						
Enroute				-98		-98
Destination	11			95	11	117
	11			-3	11	19

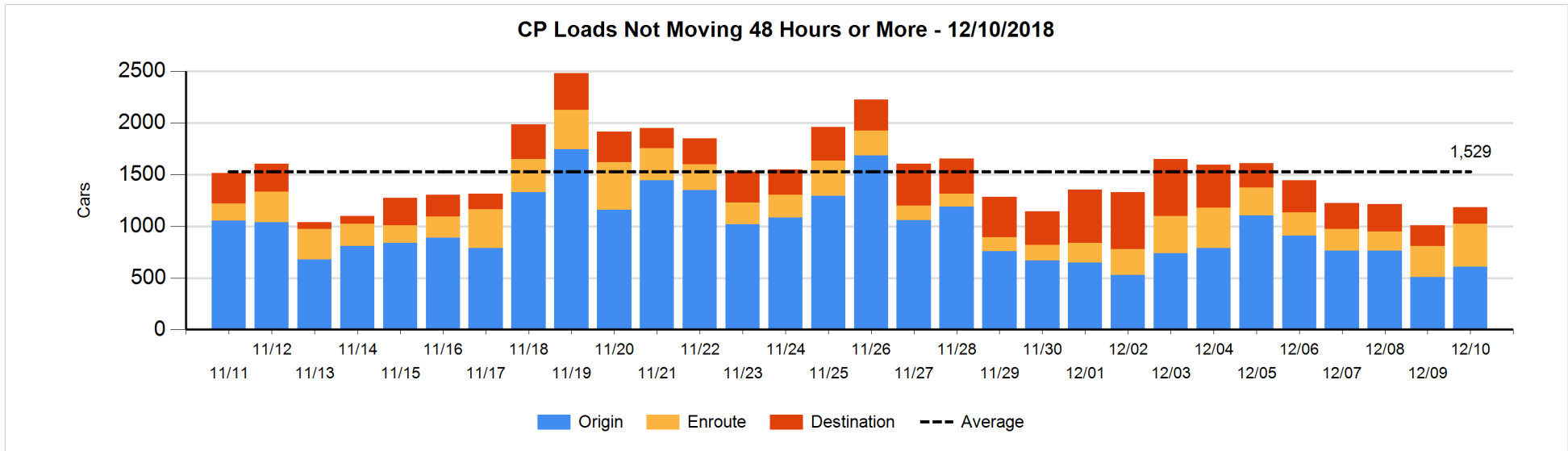
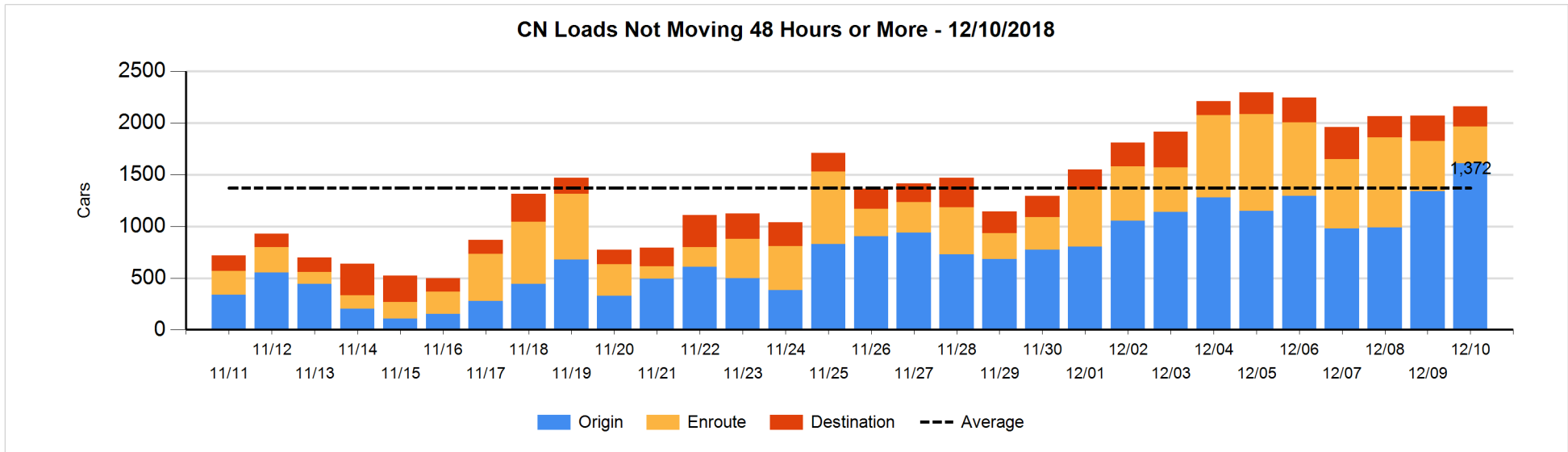


**Loads Not Moving 48 Hours or More - 12/10/2018**

	E Canada	Prince Rupert	Thunder Bay	USA/MEX	Vancouver	Total
<b>CN</b>						
Origin	80	245	126	97	1062	1610
Enroute	2	7		12	334	355
Destination	14		6	6	168	194
	96	252	132	115	1564	2159
<b>CP</b>						
Origin	2		160	31	417	610
Enroute	5		6	88	314	413
Destination			47	2	114	163
	7		213	121	845	1186
<b>US Rail / Short Line</b>						
Origin						
Enroute				28		28
Destination				28	26	54
				56	26	82

**Change in Loads Not Moving 48 Hours or More - 12/10/2018**

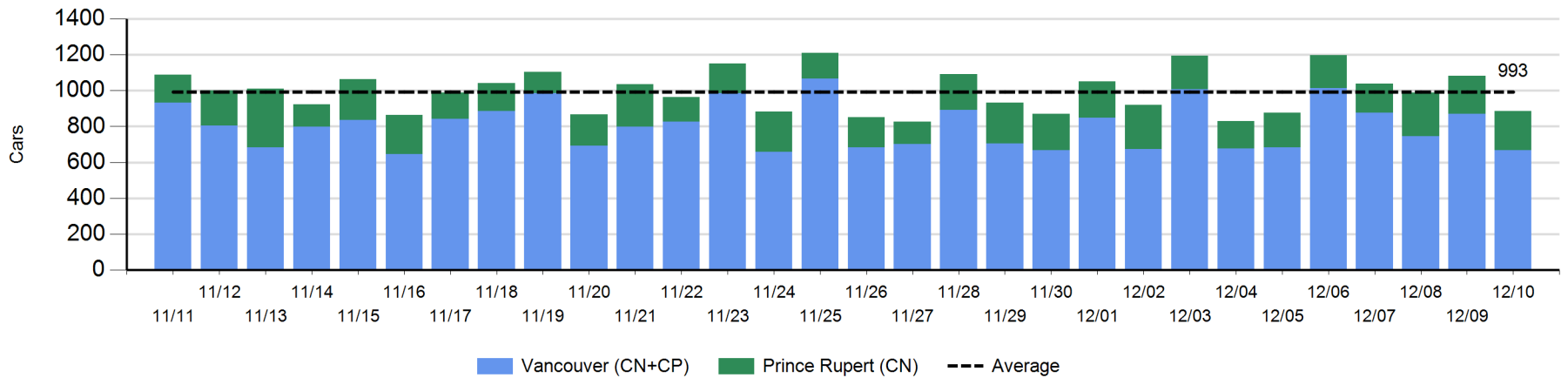
	E Canada	Prince Rupert	Thunder Bay	USA/MEX	Vancouver	Total
<b>CN</b>						
Origin	17	0	55	27	174	273
Enroute	-23	-11	-51	1	-49	-133
Destination	-9		-27	0	-17	-53
	-15	-11	-23	28	108	87
<b>CP</b>						
Origin	-4		-156	1	260	101
Enroute	-4		0	-3	120	113
Destination			-66	1	28	-37
	-8		-222	-1	408	177
<b>US Rail / Short Line</b>						
Origin						
Enroute				-13		-13
Destination	-4			-4	-4	-12
	-4			-17	-4	-25



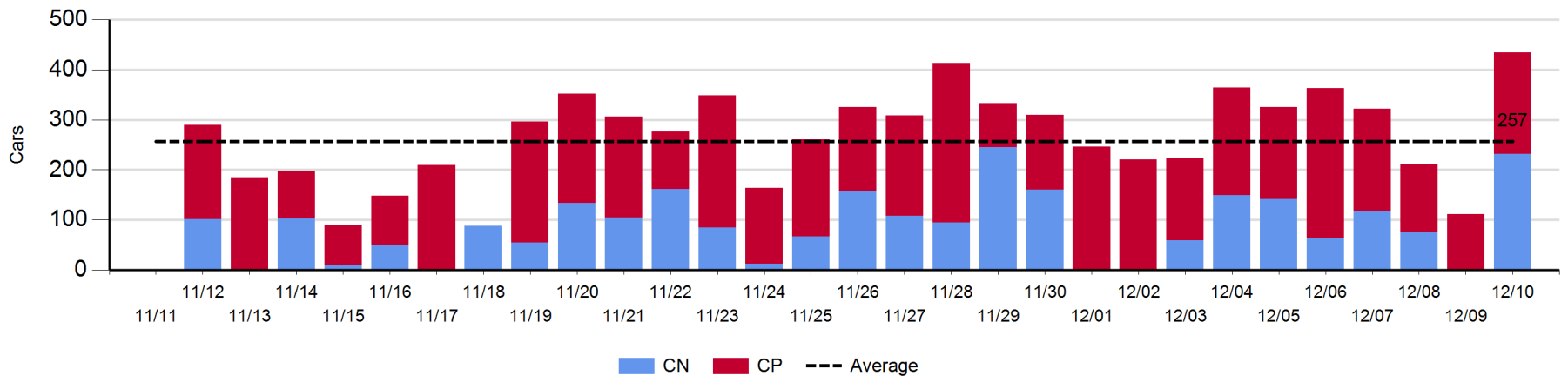
**Port Unloads - 12/10/2018**

	Prince Rupert	Vancouver	West Coast Total	Thunder Bay	Total
CN	218	308	526	232	758
CP		360	360	202	562
	218	668	886	434	1,320

**West Coast Port Unloads - Prior 30 Days**



**Thunder Bay Port Unloads - Prior 30 Days**





**Port Terminal Status**

**Vancouver**

Daily Activity for 12/10/2018

	Cars Arrived	Cars Received in Interchange	Cars Delivered in Interchange	Cars Placed for Unloading	Loads on Wheels at Destination As of 12/10/2018
CN	122	3	11	409	533
CP	1	8	17	353	251
SRY		17		7	46

**Port Unloads**

	12/10	12/09	Week To Date	Last Week
CN	308	405	308	2,755
CP	360	464	360	3,118
SRY	13		13	79

**Age Profile of Loaded Cars Waiting Placement for Unloading**

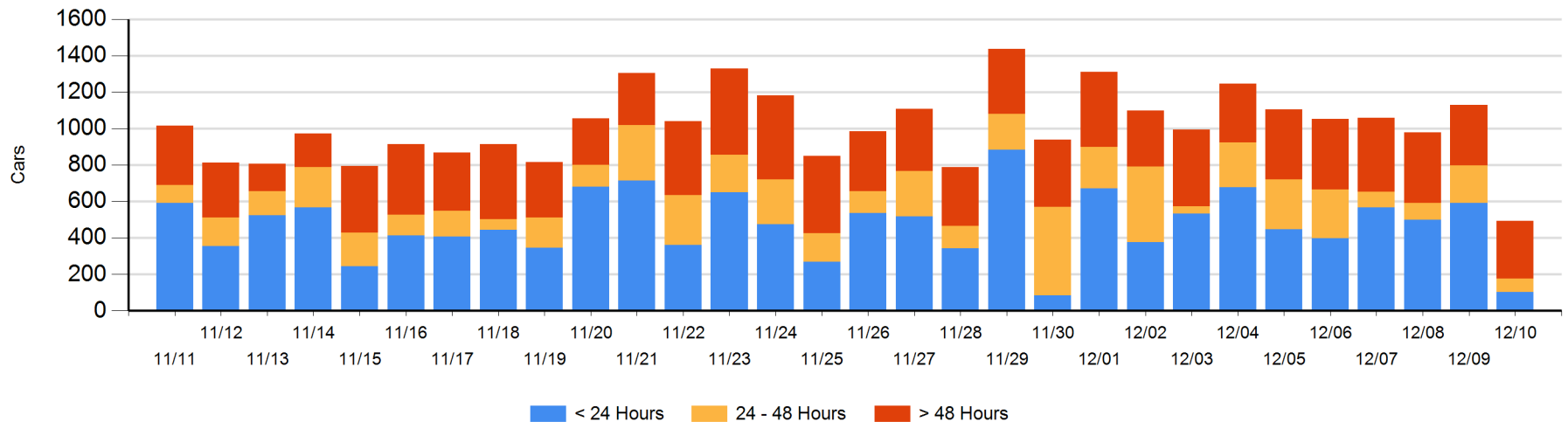
**Today**

	< 24 Hrs	24 - 48 Hrs	> 48-72 Hrs	> 72 Hrs	Total On Hand
CN	102	58	1	173	334
CP	1	16	35	87	139
SRY				20	20

**Change in Last 24 Hours**

	< 24 Hrs	24-48 Hrs	48 - 72 Hrs	> 72 Hrs
CN	-319	39	-9	-33
CP	-169	-173	18	9
SRY				0

**Loaded Cars on Hand Vancouver Waiting for Placement - Last 30 Days All Railways**



**Port Terminal Status**

**Prince Rupert**

Daily Activity for 12/10/2018

	Cars Arrived	Cars Received in Interchange	Cars Delivered in Interchange	Cars Placed for Unloading	Loads on Wheels at Destination As of 12/10/2018
CN	252			252	83

**Port Unloads**

	12/10	12/09	Week To Date	Last Week
CN	218	213	218	1,329

**Age Profile of Loaded Cars Waiting Placement for Unloading**

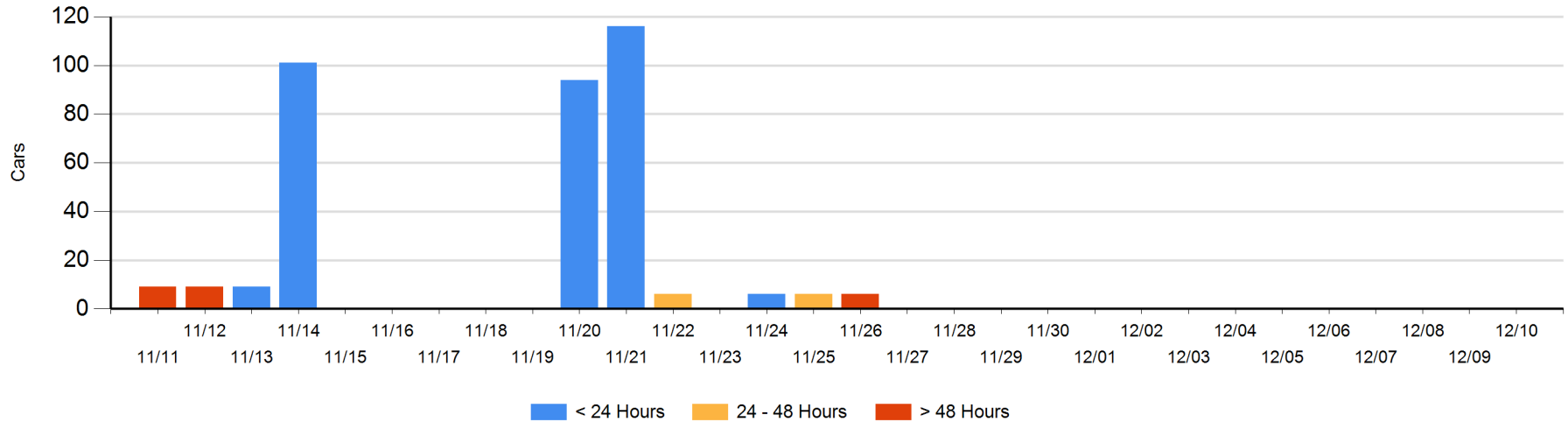
**Today**

	< 24 Hrs	24 - 48 Hrs	> 48-72 Hrs	> 72 Hrs	Total On Hand
CN					0

**Change in Last 24 Hours**

	< 24 Hrs	24-48 Hrs	48 - 72 Hrs	> 72 Hrs
CN				

Loaded Cars on Hand Prince Rupert Waiting for Placement - Last 30 Days All Railways



**Port Terminal Status**

**Thunder Bay**

Daily Activity for 12/10/2018

	Cars Arrived	Cars Received in Interchange	Cars Delivered in Interchange	Cars Placed for Unloading	Loads on Wheels at Destination As of 12/10/2018
CN	101			8	123
CP	288			58	518

**Port Unloads**

	12/10	12/09	Week To Date	Last Week
CN	232		232	606
CP	202	112	202	1,315

**Age Profile of Loaded Cars Waiting Placement for Unloading**

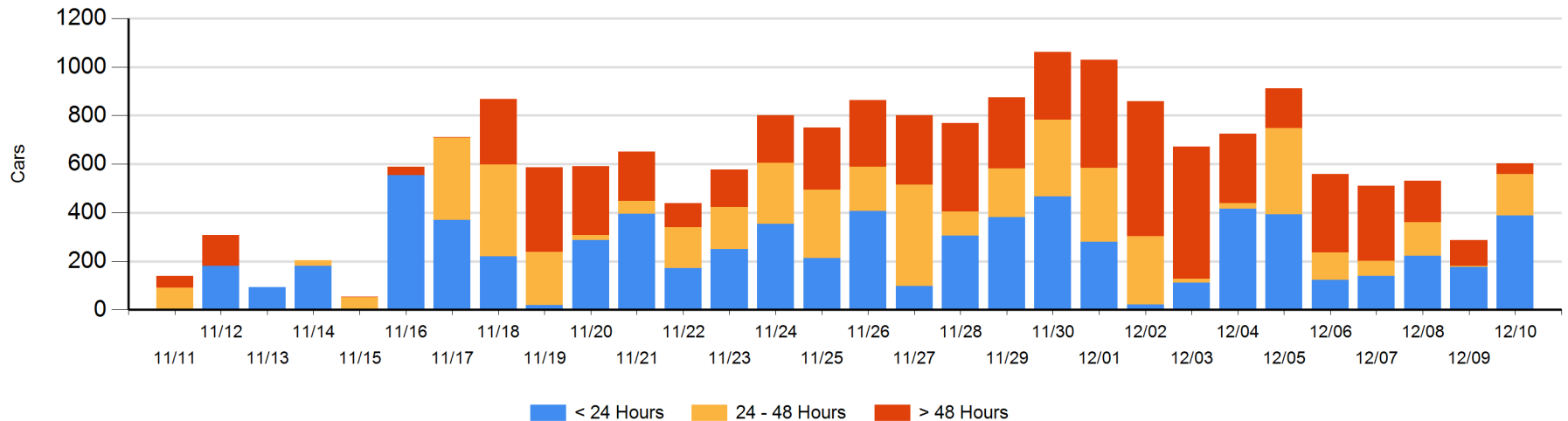
**Today**

	< 24 Hrs	24 - 48 Hrs	> 48-72 Hrs	> 72 Hrs	Total On Hand
CN	101			10	111
CP	288	169	3	32	492

**Change in Last 24 Hours**

	< 24 Hrs	24-48 Hrs	48 - 72 Hrs	> 72 Hrs
CN	93		-10	10
CP	119	166	-60	-1

**Loaded Cars on Hand Thunder Bay Waiting for Placement - Last 30 Days All Railways**



## Measurement Definitions

Loads on Wheels	<p>Count of loaded rail cars including all rail cars that have been released loaded at origin and have not been reported by the railway as unloaded at destination.</p> <p>Counts include all rail cars (hopper cars and boxcars) moving within a pipeline.</p>
Loads Not Moving	<p>Loaded rail cars for which the railways have not reported a movement event for 48 hours or more whether the rail car is at origin, enroute or at destination.</p>
Port Unloads	<p>Count of rail cars reported by railways as unloaded at the western port destinations of Vancouver, Prince Rupert and Thunder Bay.</p> <p>Unload counts include all rail cars (hopper cars and boxcars) unloaded by all receivers including major port terminals, transloaders and other receivers.</p>
Cars Arrived	<p>Count of rail cars reported as arrived at the destination railway terminal.</p>
Cars Received in Interchange	<p>Count of rail cars received in interchange by each railway within a destination railway terminal. Interchange activity is tracked for the Vancouver and Thunder Bay pipelines as applicable.</p>
Cars Delivered in Interchange	<p>Count of rail cars delivered in interchange by each railway within a destination railway terminal. Interchange activity is tracked for the Vancouver and Thunder Bay pipelines as applicable.</p>
Cars Placed for Unloading	<p>Count of rail cars reported by the railways as placed loaded at the receiver's facility for unloading.</p>
Loads on Wheels at Destination	<p>Count of rail cars that remain under load within the destination railway terminal including rail cars that have been reported as placed for unloading but not yet reported as unloaded.</p>
Waiting Placement for Unloading	<p>Count of rail cars that have been reported as arrived at the destination railway terminal but not reported as placed for unloading by the railway.</p> <p>For the Ports of Vancouver, Prince Rupert and Thunder Bay the count of rail cars waiting placement for unloading is categorized by age – i.e. the elapsed time from arrival at destination to the current report date.</p>