

**SPEED READ**

- Loads on wheels decreased slightly overnight, reflecting a decline in CN traffic offset by higher CP volumes. On a net basis, volumes declined due to lower traffic across all corridors other than E. Canada.
- Network fluidity improved overnight, led by a decline in idle car counts on both CN and CP by 27% (-584) and 18% (-216), respectively. The total count of cars for 4+ days on both railways decreased 17% (-331) overnight - now at 1,628 cars.
- Two days in Week 20 unloads now behind prior week's performance by more than 50 unloads, reflecting lower unloads at Vancouver offset by improved week over week performance at Thunder Bay and Prince Rupert.

**Loads on Wheels**

- Loads on wheels decreased marginally by 1% (-115) overnight, due to reduced traffic on CN offset by higher traffic on CP - combined total at 11,894 and 2% below the trailing 30-day average.
- On a net basis, the decline in loads on wheels indicates reduced traffic across all corridors other than E. Canada.
- CN volumes decreased for the third consecutive day, down 4% (-250) overnight, with reduced traffic in the Vancouver, Prince Rupert and Thunder Bay corridors offset by higher volumes in the E. Canada and USA/MEX corridors. System wide CN loads on wheels currently at 6,239 and 2% below the trailing 30-day average.
- CP volumes increased 3% (+157) overnight and have now increased for the third consecutive day, driven by a rise in traffic in the Vancouver corridor offset by a decline in traffic in the E. Canada, Thunder Bay and USA/MEX corridors. CP system wide loads on wheels now at 5,399 and 2% below the trailing 30-day average.
- Vancouver currently at 7,365, declined slightly (-13) overnight, now 2% below the trailing 30-day average.
- The Prince Rupert pipeline currently at 1,411, fell 5% (-70) overnight, and 8% below the trailing 30 day-average.
- Thunder Bay volumes decreased 2% (-45) overnight - currently at 2,127 and 7% above the trailing 30-day average, with 62% of traffic moving on CP.

**Hopper Car Rationing**

- CN rationed 280 hopper cars in week 18.

**Loads Not Moving**

- **The count of cars not moving for 48+ hours declined 24% (-800) overnight, reflecting lower counts on both CN and CP. Idle car counts now at 2,535 and 13% below the trailing 30 day-average.**
- CN
  - **The count of idle cars for 48+ hours decreased 27% (-584) overnight - now at 1,574 cars.**
  - The number of cars idle for 4+ days decreased 16% (-236) overnight - now at 1,195 cars.
  - The count of cars not moving for 7+ days increased 21% (+93) overnight and have now increased for the fourth consecutive day - currently at 527 cars, the highest seen in the last 30 days.
  - Vancouver represents 87% of all idle cars.
  - In total 74% of all idle cars are dwelling at origin locations.
- CP
  - **CP idle car counts for 48+ hours declined 18% (-216) overnight - now at 961 cars, the lowest seen in the last 30 days.**
  - The number of cars idle for 4+ days fell 18% (-95) overnight - currently at 433 cars.

- The number of cars idle for 7+ days decreased 24% (-35) overnight - now at 112 cars.
- Vancouver accounts for 68% of all idle cars.
- In total 56% of all idle cars are dwelling at origin locations.

### **Port Performance**

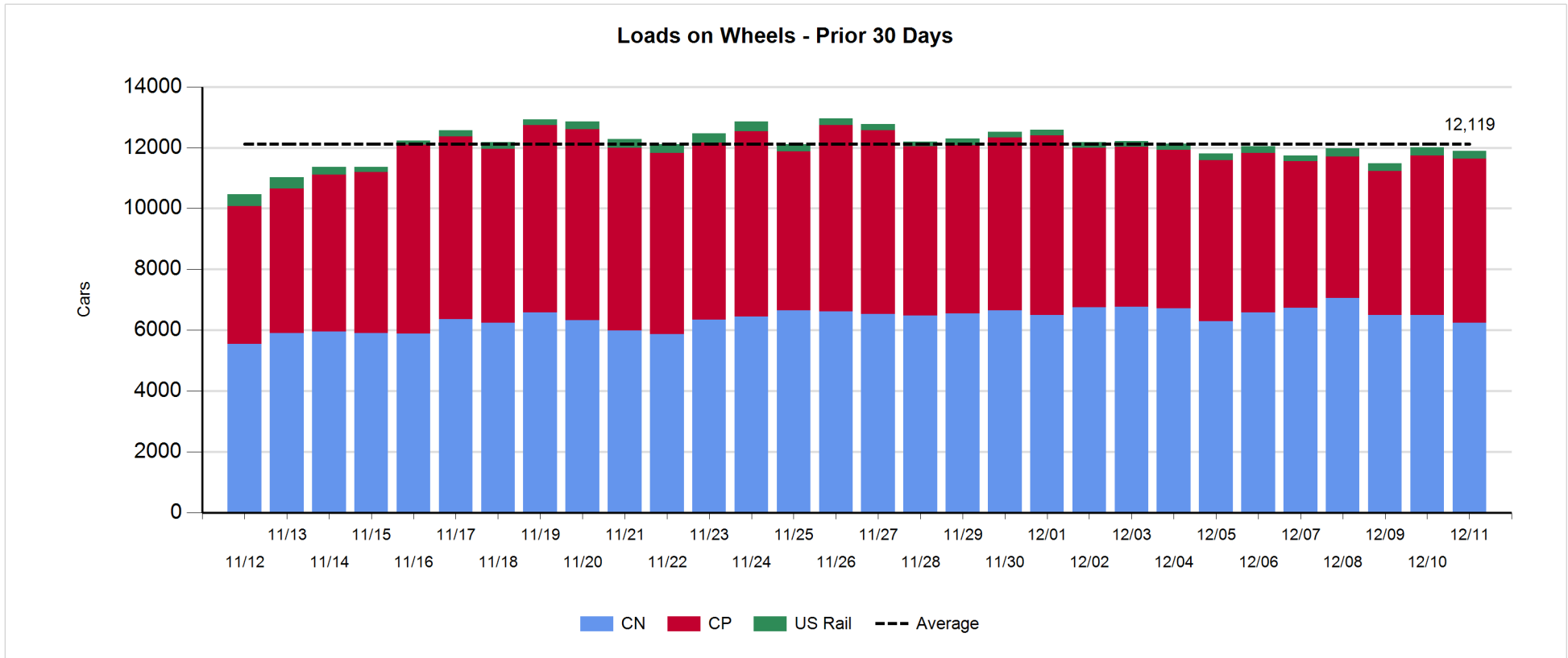
- CN and CP reported a total of 1,232 cars unloaded at the three major ports, now 2% below the trailing 30 day-average. Two days in Week 20 unloads now behind last week's pace by more than 50 unloads, reflecting reduced unloads at Vancouver offset by higher unloads at Thunder Bay and Prince Rupert.
- Vancouver
  - 674 unloads reported by CN and CP at the Port of Vancouver; CN - 396 and CP - 278. Two days in Week 20 unloads are tracking behind last week's performance by 350 unloads.
  - There are 750 cars on site at Vancouver with less than 600 cars arriving at the port in the last 24 hours.
  - CN and CP have 2,400 cars in British Columbia en route to Vancouver, with more than 1,450 cars at Kamloops and west, and 63% of traffic moving on CP.
- Prince Rupert
  - Prince Rupert reported 220 unloads, now ahead of last week's unloads after two days by 100 unloads.
  - Loads on wheels now above 1,000 cars - now at 1,411 cars.
  - There are 450 cars west of Jasper en route to Prince Rupert.
  - There are 150 cars on site at Prince Rupert with 300 cars arriving at the port in the last 24 hours. Given the structure of the pipeline, there appears to be sufficient cars available to support unloads in the next few days.
- Thunder Bay
  - 338 unloads were reported at Thunder Bay yesterday. Two days in Week 20 unloads are tracking ahead of last week's pace by nearly 200 unloads.
  - There are more than 750 cars on site at Thunder Bay with more than 450 cars arriving at the port in the prior 24 hours.
  - There are more than 200 cars en route to Thunder Bay from Winnipeg and east. Cars on hand and those en route should support unloads in the next few days.

**Daily Loads on Wheels - 12/11/2018**

	E Canada	Prince Rupert	Thunder Bay	USA/MEX	Vancouver	Total
CN	334	1,411	812	261	3,421	6,239
CP	37		1,315	143	3,904	5,399
Short Line	7				40	47
US Rail				209		209
	378	1,411	2,127	613	7,365	11,894

**Change in Loads on Wheels - Prior 24 Hours**

	E Canada	Prince Rupert	Thunder Bay	USA/MEX	Vancouver	Total
CN	51	-70	-39	2	-194	-250
CP	-21		-6	-3	187	157
Short Line	-16				-6	-22
US Rail				0		0
	14	-70	-45	-1	-13	-115

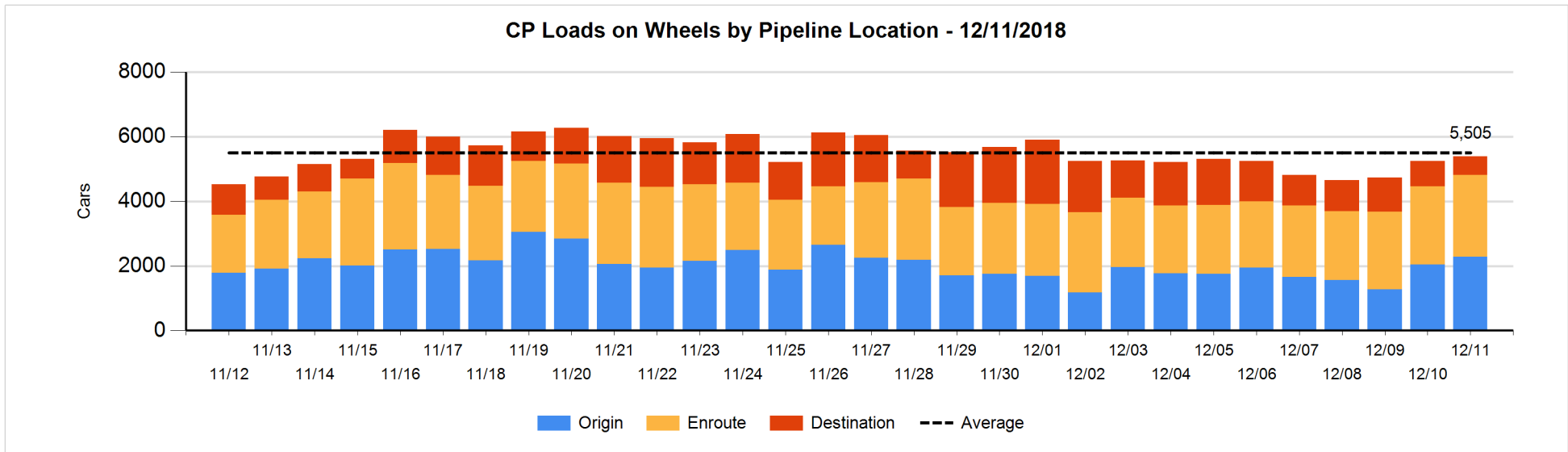
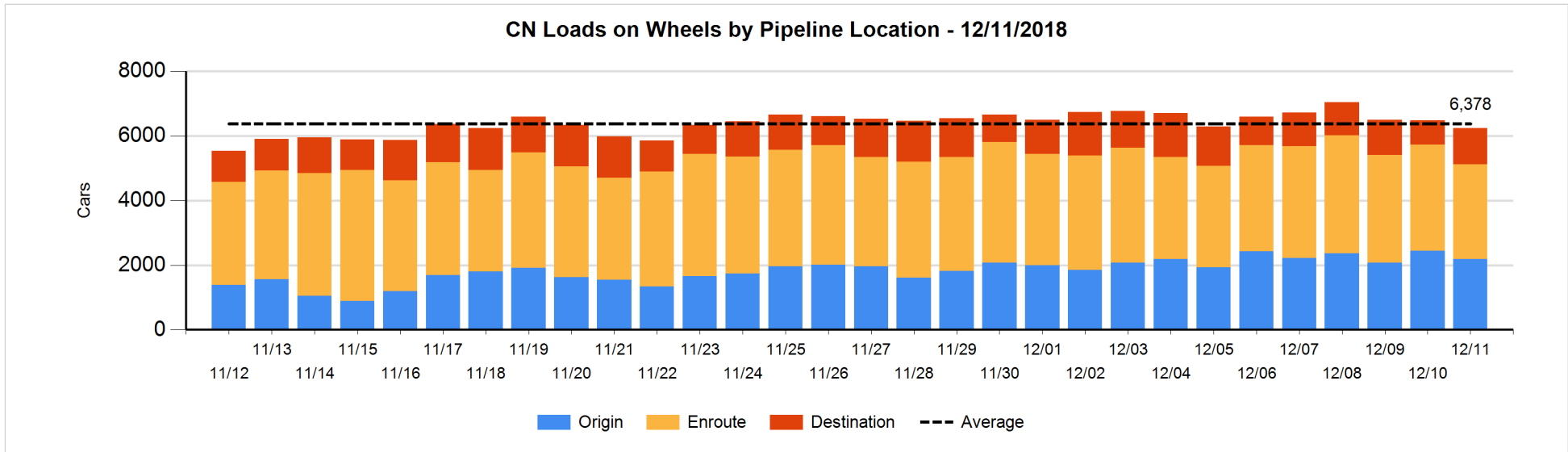


**Daily Loads on Wheels By Pipeline Location - 12/11/2018**

	E Canada	Prince Rupert	Thunder Bay	USA/MEX	Vancouver	Total
CN						
Origin	40	498		106	1,543	2,187
Enroute	248	753	413	142	1,374	2,930
Destination	46	160	399	13	504	1,122
	334	1,411	812	261	3,421	6,239
CP						
Origin	5		764	32	1,482	2,283
Enroute	32		172	111	2,219	2,534
Destination			379		203	582
	37		1,315	143	3,904	5,399
US Rail / Short Line						
Origin						
Enroute				76		76
Destination	7			133	40	180
	7			209	40	256

**Change in Daily Loads on Wheels By Pipeline Location - Prior 24 Hours**

	E Canada	Prince Rupert	Thunder Bay	USA/MEX	Vancouver	Total
CN						
Origin	-41	-54	-229	0	68	-256
Enroute	60	-93	-86	-1	-233	-353
Destination	32	77	276	3	-29	359
	51	-70	-39	2	-194	-250
CP						
Origin	3		184	0	47	234
Enroute	-24		-51	0	188	113
Destination			-139	-3	-48	-190
	-21		-6	-3	187	157
US Rail / Short Line						
Origin						
Enroute				-2		-2
Destination	-16			2	-6	-20
	-16			0	-6	-22

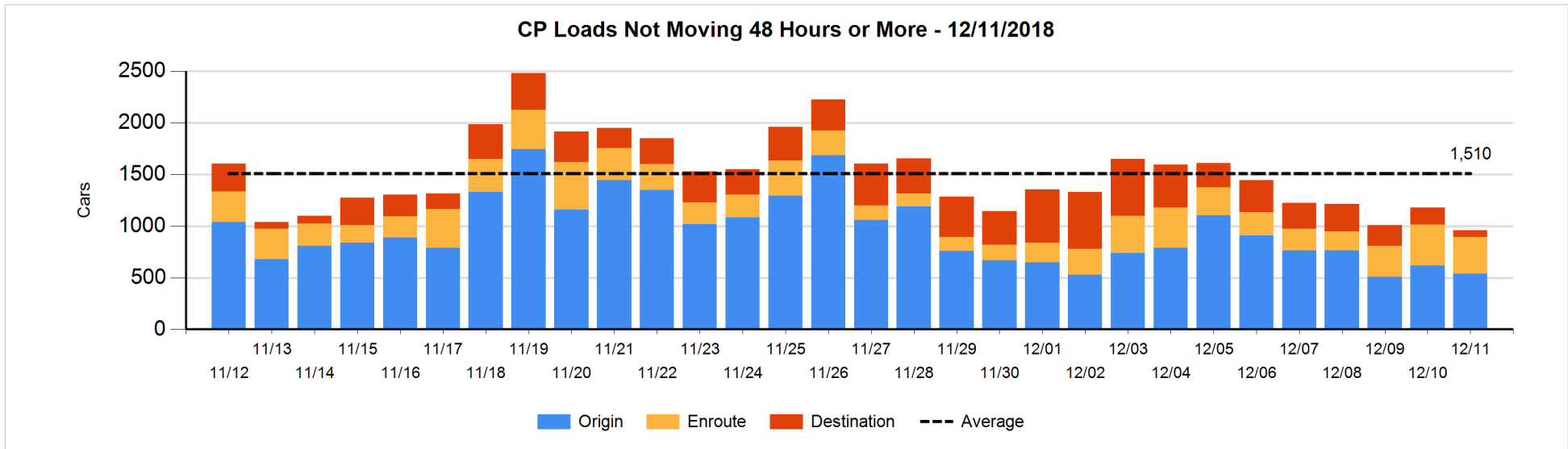
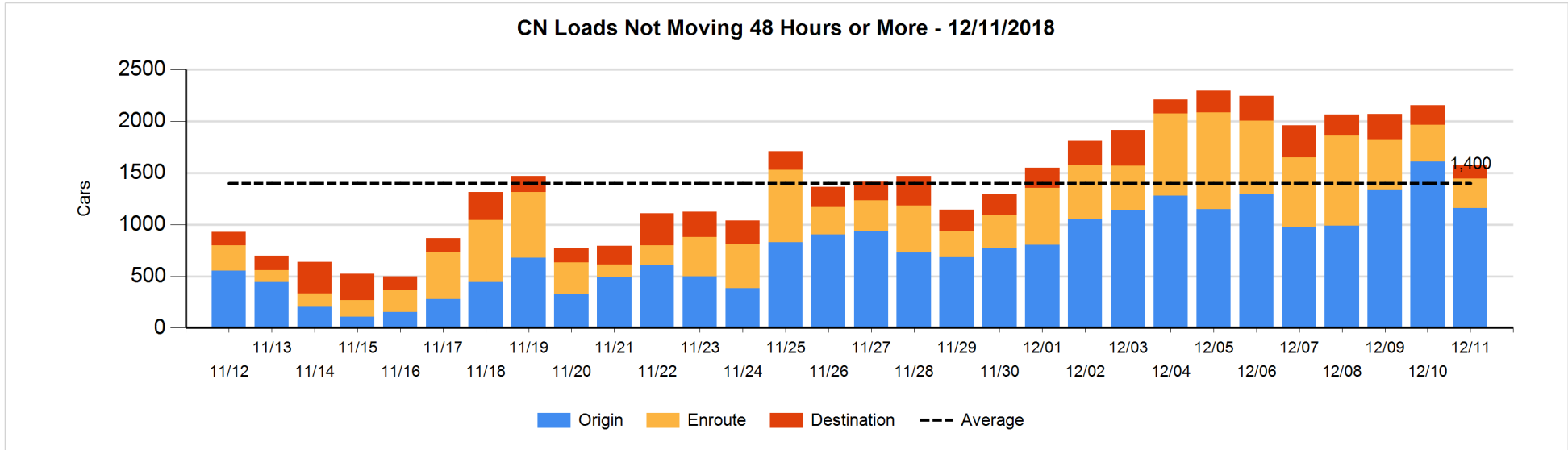


**Loads Not Moving 48 Hours or More - 12/11/2018**

	E Canada	Prince Rupert	Thunder Bay	USA/MEX	Vancouver	Total
<b>CN</b>						
Origin	10	40		97	1012	1159
Enroute	14	3		14	256	287
Destination	13		10	2	103	128
	37	43	10	113	1371	1574
<b>CP</b>						
Origin	2		160	30	348	540
Enroute	3		6	87	259	355
Destination			19		47	66
	5		185	117	654	961
<b>US Rail / Short Line</b>						
Origin						
Enroute				33		33
Destination	7			115	22	144
	7			148	22	177

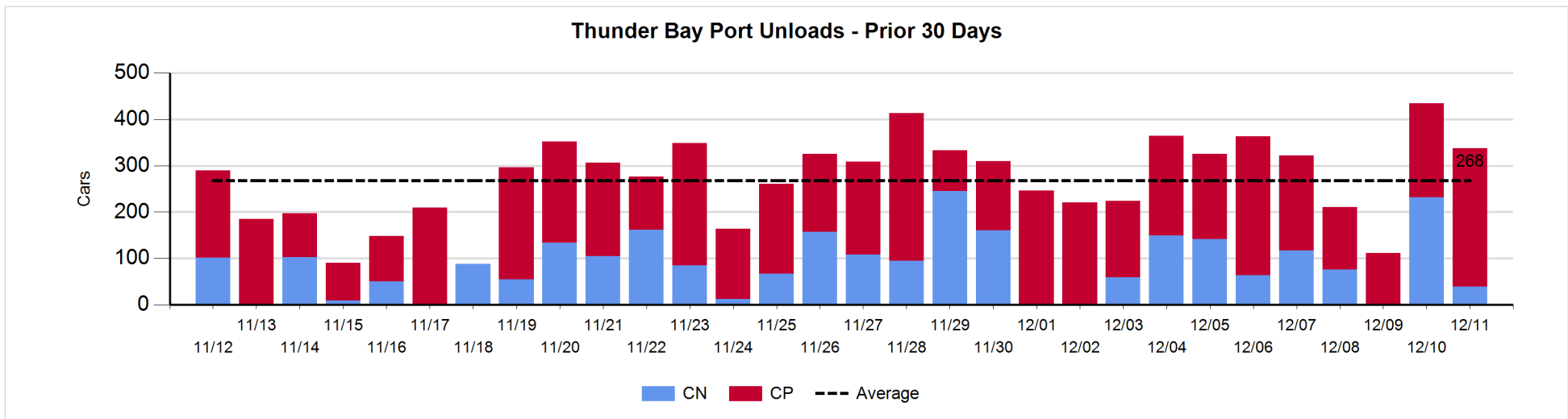
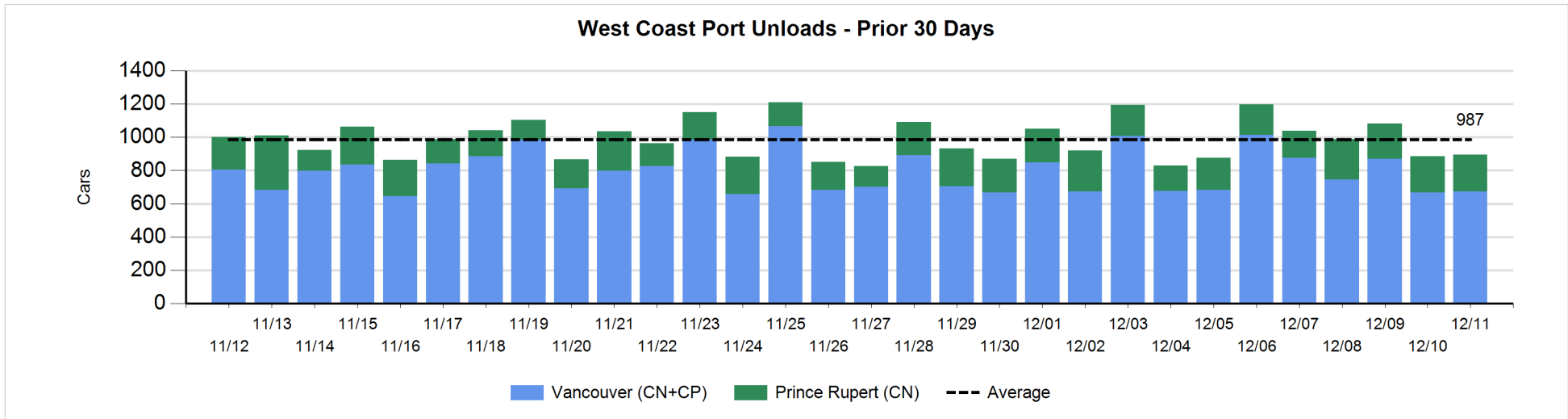
**Change in Loads Not Moving 48 Hours or More - 12/11/2018**

	E Canada	Prince Rupert	Thunder Bay	USA/MEX	Vancouver	Total
<b>CN</b>						
Origin	-70	-205	-126	0	-50	-451
Enroute	12	-4		2	-78	-68
Destination	0		4	-4	-65	-65
	-58	-209	-122	-2	-193	-584
<b>CP</b>						
Origin	0		0	-1	-75	-76
Enroute	-2		0	-1	-40	-43
Destination			-28	-2	-67	-97
	-2		-28	-4	-182	-216
<b>US Rail / Short Line</b>						
Origin						
Enroute				5		5
Destination	6			87	-4	89
	6			92	-4	94



**Port Unloads - 12/11/2018**

	Prince Rupert	Vancouver	West Coast Total	Thunder Bay	Total
CN	220	396	616	39	655
CP		278	278	299	577
	220	674	894	338	1,232





**Port Terminal Status**

**Vancouver**

Daily Activity for 12/11/2018

	Cars Arrived	Cars Received in Interchange	Cars Delivered in Interchange	Cars Placed for Unloading	Loads on Wheels at Destination As of 12/11/2018
CN	377	132	162	340	504
CP	203	162	132	322	203
SRY				9	40

**Port Unloads**

	12/11	12/10	Week To Date	Last Week
CN	396	308	704	2,755
CP	278	360	638	3,118
SRY	9	13	22	79

**Age Profile of Loaded Cars Waiting Placement for Unloading**

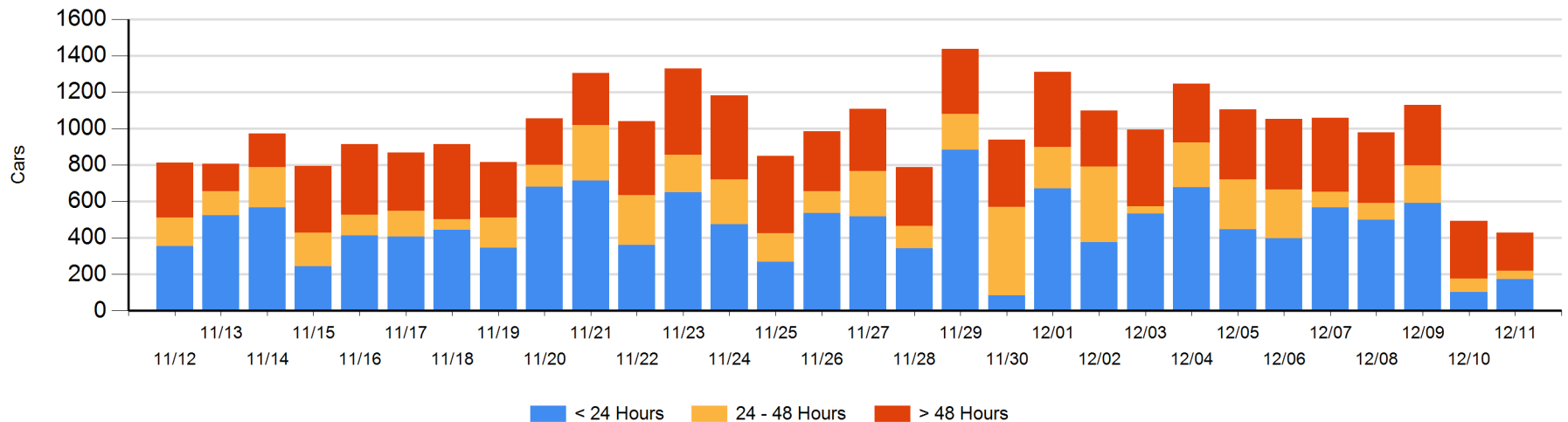
**Today**

	< 24 Hrs	24 - 48 Hrs	> 48-72 Hrs	> 72 Hrs	Total On Hand
CN	64	46	58	49	217
CP	108	1	2	85	196
SRY				17	17

**Change in Last 24 Hours**

	< 24 Hrs	24-48 Hrs	48 - 72 Hrs	> 72 Hrs
CN	-38	-12	57	-124
CP	107	-15	-33	-2
SRY				-3

**Loaded Cars on Hand Vancouver Waiting for Placement - Last 30 Days All Railways**



**Port Terminal Status**

**Prince Rupert**

Daily Activity for 12/11/2018

	Cars Arrived	Cars Received in Interchange	Cars Delivered in Interchange	Cars Placed for Unloading	Loads on Wheels at Destination As of 12/11/2018
CN	297			297	160

**Port Unloads**

	12/11	12/10	Week To Date	Last Week
CN	220	218	438	1,329

**Age Profile of Loaded Cars Waiting Placement for Unloading**

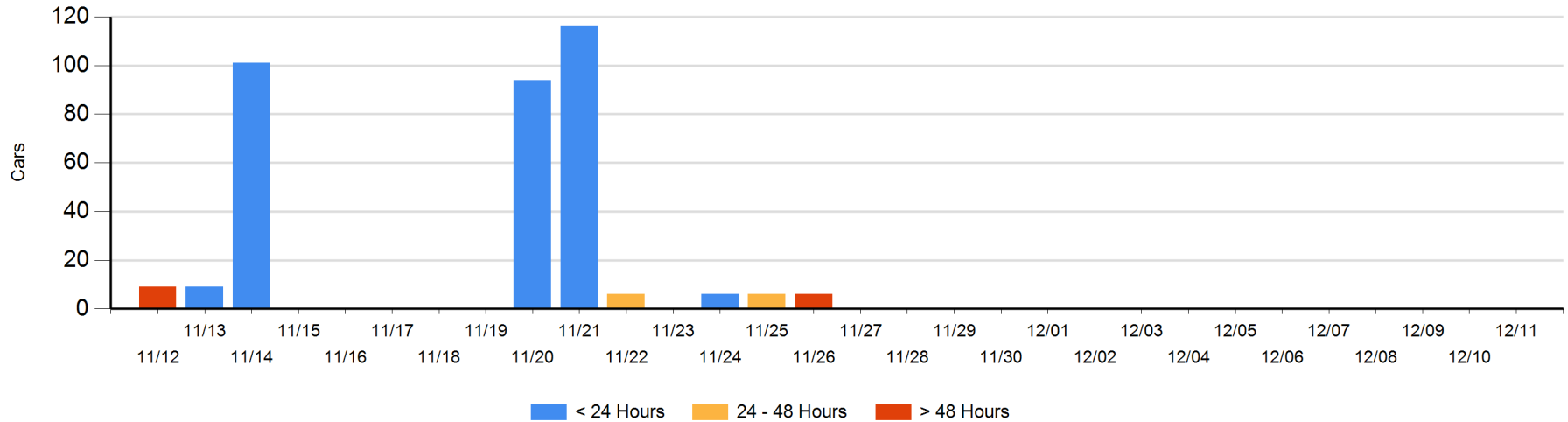
**Today**

	< 24 Hrs	24 - 48 Hrs	> 48-72 Hrs	> 72 Hrs	Total On Hand
CN					0

**Change in Last 24 Hours**

	< 24 Hrs	24-48 Hrs	48 - 72 Hrs	> 72 Hrs
CN				

Loaded Cars on Hand Prince Rupert Waiting for Placement - Last 30 Days All Railways



**Port Terminal Status**

**Thunder Bay**

Daily Activity for 12/11/2018

	Cars Arrived	Cars Received in Interchange	Cars Delivered in Interchange	Cars Placed for Unloading	Loads on Wheels at Destination As of 12/11/2018
CN	315			72	399
CP	162			299	379

**Port Unloads**

	12/11	12/10	Week To Date	Last Week
CN	39	232	271	606
CP	299	202	501	1,315

**Age Profile of Loaded Cars Waiting Placement for Unloading**

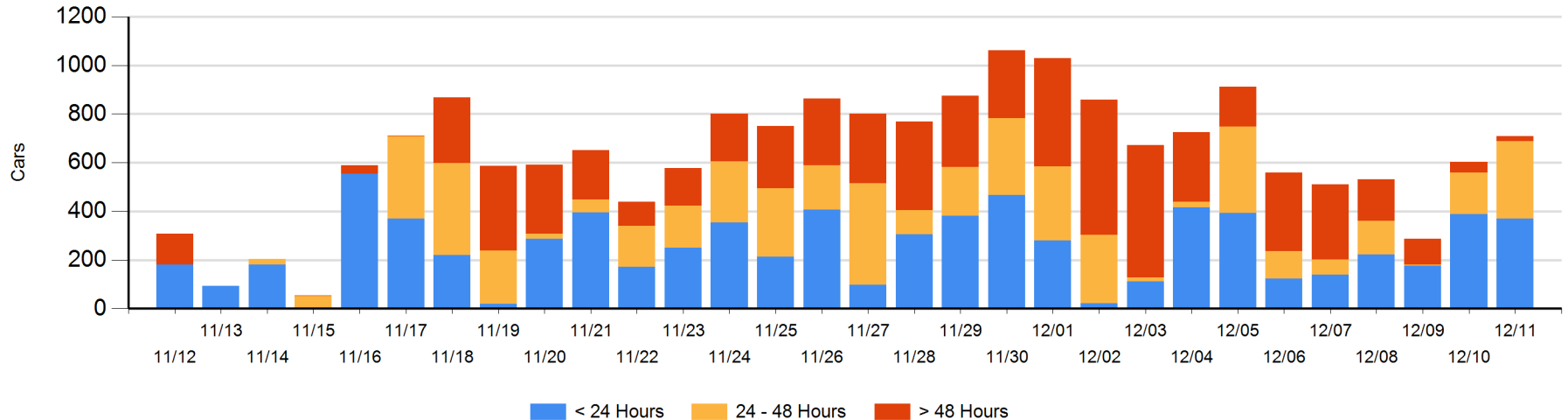
**Today**

	< 24 Hrs	24 - 48 Hrs	> 48-72 Hrs	> 72 Hrs	Total On Hand
CN	243	101		10	354
CP	127	217	5	5	354

**Change in Last 24 Hours**

	< 24 Hrs	24-48 Hrs	48 - 72 Hrs	> 72 Hrs
CN	142	101		0
CP	-161	48	2	-27

**Loaded Cars on Hand Thunder Bay Waiting for Placement - Last 30 Days All Railways**



## Measurement Definitions

Loads on Wheels	<p>Count of loaded rail cars including all rail cars that have been released loaded at origin and have not been reported by the railway as unloaded at destination.</p> <p>Counts include all rail cars (hopper cars and boxcars) moving within a pipeline.</p>
Loads Not Moving	<p>Loaded rail cars for which the railways have not reported a movement event for 48 hours or more whether the rail car is at origin, enroute or at destination.</p>
Port Unloads	<p>Count of rail cars reported by railways as unloaded at the western port destinations of Vancouver, Prince Rupert and Thunder Bay.</p> <p>Unload counts include all rail cars (hopper cars and boxcars) unloaded by all receivers including major port terminals, transloaders and other receivers.</p>
Cars Arrived	<p>Count of rail cars reported as arrived at the destination railway terminal.</p>
Cars Received in Interchange	<p>Count of rail cars received in interchange by each railway within a destination railway terminal. Interchange activity is tracked for the Vancouver and Thunder Bay pipelines as applicable.</p>
Cars Delivered in Interchange	<p>Count of rail cars delivered in interchange by each railway within a destination railway terminal. Interchange activity is tracked for the Vancouver and Thunder Bay pipelines as applicable.</p>
Cars Placed for Unloading	<p>Count of rail cars reported by the railways as placed loaded at the receiver's facility for unloading.</p>
Loads on Wheels at Destination	<p>Count of rail cars that remain under load within the destination railway terminal including rail cars that have been reported as placed for unloading but not yet reported as unloaded.</p>
Waiting Placement for Unloading	<p>Count of rail cars that have been reported as arrived at the destination railway terminal but not reported as placed for unloading by the railway.</p> <p>For the Ports of Vancouver, Prince Rupert and Thunder Bay the count of rail cars waiting placement for unloading is categorized by age – i.e. the elapsed time from arrival at destination to the current report date.</p>