

**SPEED READ**

- Loads on wheels decreased marginally overnight, reflecting a decline in CN volumes offset by higher CP volumes. On a net basis, volumes decreased due to lower traffic in the Prince Rupert, Thunder Bay and Vancouver corridors offset by higher volumes in the USA/MEX and E. Canada corridors.
- Network fluidity deteriorated overnight, led by an increase in idle car counts on CP by 17% (+270) offset by a decline in idle car counts on CN by 5% (-83). The total count of cars for 4+ days on both railways decreased 8% (-134) overnight - currently at 1,652 cars.
- Three days in Week 21 unloads now ahead of prior week's performance by more than 150 unloads, marking improved week over week performance at Vancouver offset by lower unloads at Thunder Bay and Prince Rupert.

**Loads on Wheels**

- Loads on wheels declined slightly by 1% (-138) overnight, due to lower volumes on CN offset by higher traffic on CP - combined total at 11,523 and 5% below the trailing 30-day average.
- On a net basis, the decline in loads on wheels indicates reduced volumes in the Prince Rupert, Thunder Bay and Vancouver corridors offset by higher volumes in the USA/MEX and E. Canada corridors.
- CN volumes declined 4% (-248) overnight and have now decreased for the fourth consecutive day, with lower volumes in the Prince Rupert, Thunder Bay and Vancouver corridors offset by higher volumes in the E. Canada and USA/MEX corridors. System wide CN loads on wheels currently at 5,863 and 9% below the trailing 30-day average.
- CP volumes rose slightly by 1% (+70) overnight, driven by an increase in volumes in the USA/MEX and Thunder Bay corridors offset by a decline in volumes in the Vancouver and E. Canada corridors. CP system wide loads on wheels currently at 5,517 and 1% below the trailing 30-day average.
- Vancouver currently at 6,985, the lowest seen in the last 30 days, fell slightly by 1% (-67) overnight, now 8% below the trailing 30-day average.
- The Prince Rupert pipeline currently at 1,374, declined significantly by 14% (-222) overnight, and 10% below the trailing 30 day-average.
- Thunder Bay volumes decreased for the fifth consecutive day, down 5% (-82) overnight - currently at 1,584, the lowest seen in the last 30 days, and 20% below the trailing 30-day average, with 72% of traffic moving on CP.

**Hopper Car Rationing**

- CN rationed 360 hopper cars in week 19.

**Loads Not Moving**

- **The count of cars not moving for 48+ hours rose 6% (+187) overnight, reflecting higher counts on CP offset by lower counts on CN. Idle car counts currently at 3,441 and 10% above the trailing 30-day average.**
- CN
  - **The count of idle cars for 48+ hours fell 5% (-83) overnight - currently at 1,592 cars.**
  - The number of cars idle for 4+ days increased 3% (+27) overnight and have now increased for the third consecutive day - now at 825 cars.
  - The count of cars not moving for 7+ days declined 25% (-47) overnight - presently at 144 cars.
  - Vancouver represents 48% of all idle cars.
  - In total 61% of all idle cars are dwelling at origin locations.
- CP
  - **CP idle car counts for 48+ hours gained 17% (+270) overnight - now at 1,849 cars.**
  - The number of cars idle for 4+ days fell 16% (-161) overnight - currently at 827 cars.

- The number of cars idle for 7+ days increased significantly by 47% (+96) overnight and have now increased for the fourth consecutive day - presently at 299 cars.
- Vancouver accounts for 68% of all idle cars.
- In total 70% of all idle cars are dwelling at origin locations.

### **Port Performance**

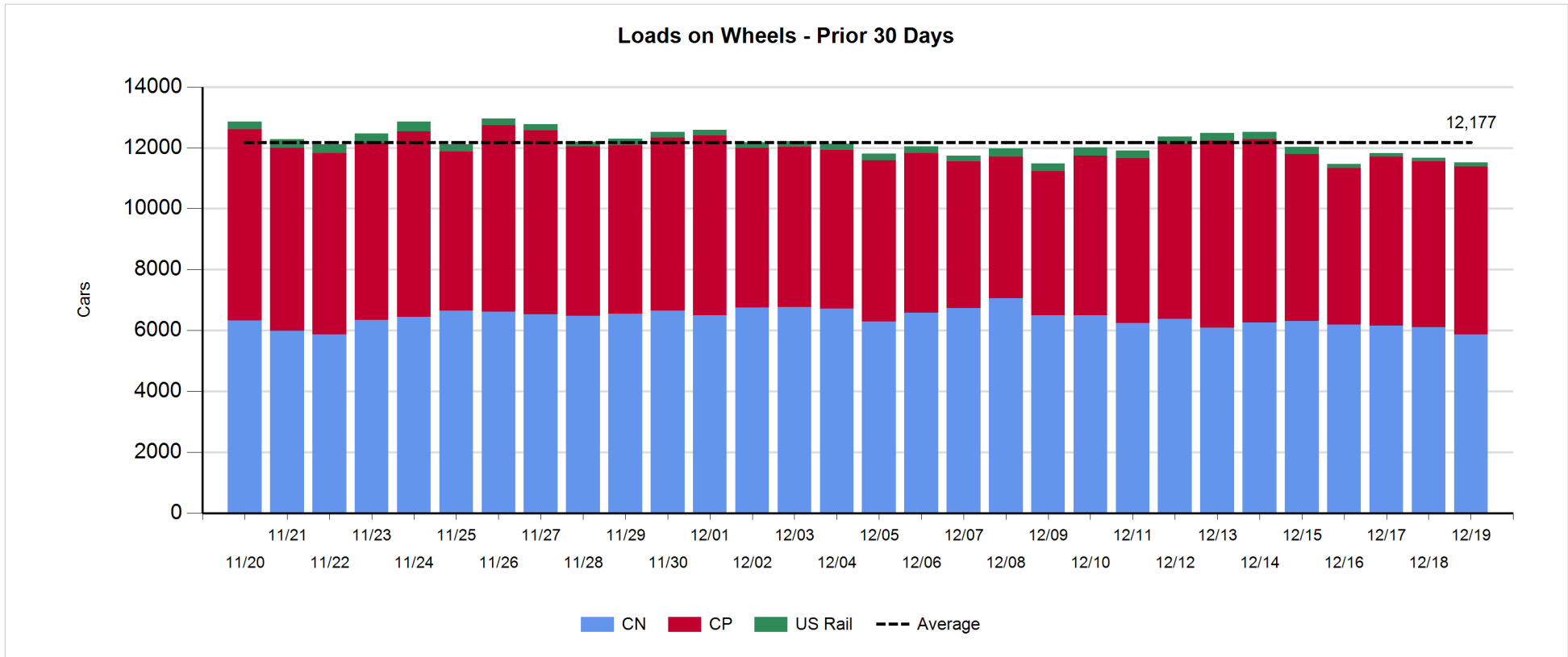
- CN and CP reported a total of 1,263 cars unloaded at the three major ports, now 1% below the trailing 30 day-average. Three days in Week 21 unloads now ahead of last week's pace by more than 150 unloads, marking higher unloads at Vancouver offset by lower unloads at Thunder Bay and Prince Rupert.
- Vancouver
  - 839 unloads reported by CN and CP at the Port of Vancouver; CN - 405 and CP - 434. Three days in Week 21 unloads are tracking ahead of last week's performance by fewer than 650 unloads.
  - There are 1,250 cars on site at Vancouver with more than 600 cars arriving at the port in the last 24 hours.
  - CN and CP have around 1,850 cars in British Columbia en route to Vancouver, with 1,050 cars at Kamloops and west, and 65% of traffic moving on CN.
- Prince Rupert
  - Prince Rupert reported 231 unloads, now behind last week's unloads after three days by more than 50 unloads.
  - Loads on wheels now above 1,000 cars - currently at 1,374 cars.
  - There are less than 350 cars west of Jasper en route to Prince Rupert.
  - There are 17 cars on site at Prince Rupert with more than 100 cars arriving at the port in the last 24 hours. Given the structure of the pipeline, there appears to be sufficient cars available to support unloads in the next few days.
- Thunder Bay
  - 193 unloads were reported at Thunder Bay yesterday. Three days in Week 21 unloads are tracking behind last week's pace by 400 unloads.
  - There are more than 600 cars on site at Thunder Bay with 150 cars arriving at the port in the prior 24 hours.
  - There are more than 250 cars en route to Thunder Bay from Winnipeg and east. Cars on hand and those en route should support unloads in the next few days.

**Daily Loads on Wheels - 12/19/2018**

	E Canada	Prince Rupert	Thunder Bay	USA/MEX	Vancouver	Total
CN	411	1,374	436	277	3,365	5,863
CP	130		1,148	633	3,606	5,517
Short Line	3				14	17
US Rail				126		126
	544	1,374	1,584	1,036	6,985	11,523

**Change in Loads on Wheels - Prior 24 Hours**

	E Canada	Prince Rupert	Thunder Bay	USA/MEX	Vancouver	Total
CN	99	-222	-85	12	-52	-248
CP	-9		3	96	-20	70
Short Line	3				5	8
US Rail				32		32
	93	-222	-82	140	-67	-138

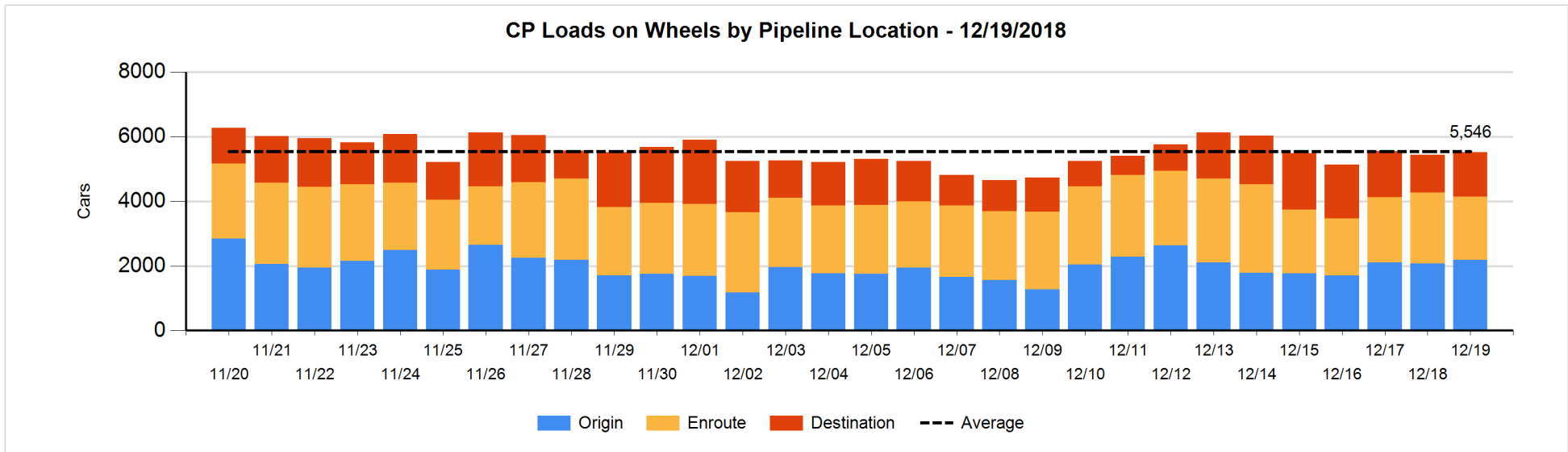
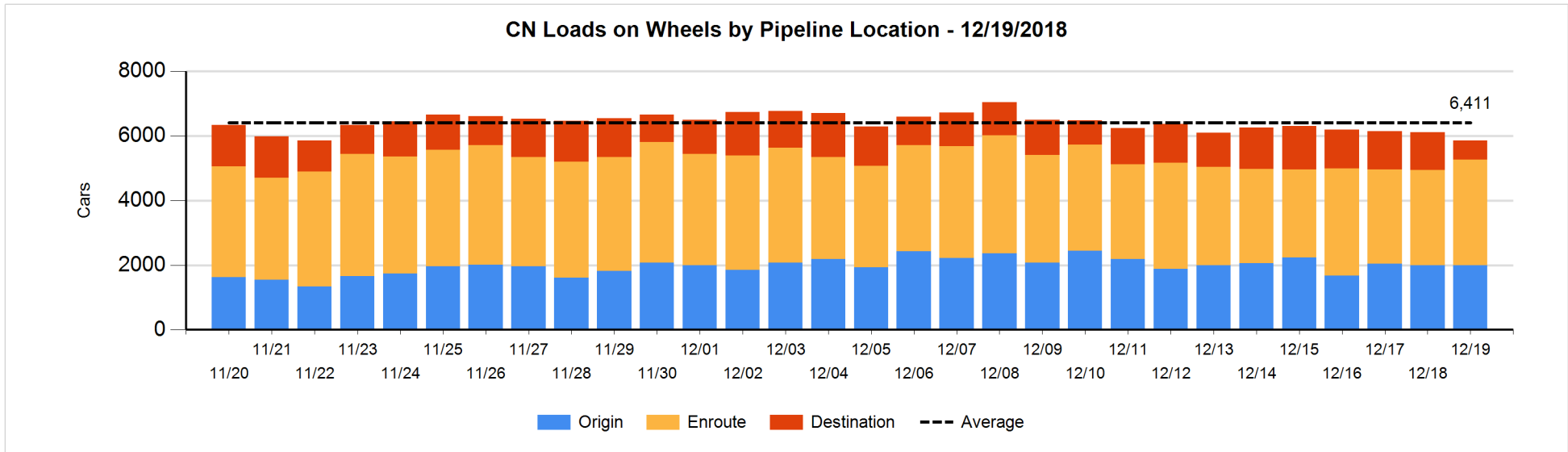


**Daily Loads on Wheels By Pipeline Location - 12/19/2018**

	E Canada	Prince Rupert	Thunder Bay	USA/MEX	Vancouver	Total
CN						
Origin	165	810	49	80	895	1,999
Enroute	202	547	201	170	2,140	3,260
Destination	44	17	186	27	330	604
	411	1,374	436	277	3,365	5,863
CP						
Origin	116		325	287	1,451	2,179
Enroute	14		388	318	1,249	1,969
Destination			435	28	906	1,369
	130		1,148	633	3,606	5,517
US Rail / Short Line						
Origin						
Enroute				90		90
Destination	3			36	14	53
	3			126	14	143

**Change in Daily Loads on Wheels By Pipeline Location - Prior 24 Hours**

	E Canada	Prince Rupert	Thunder Bay	USA/MEX	Vancouver	Total
CN						
Origin	109	-195	0	26	68	8
Enroute	-27	82	-16	-6	270	303
Destination	17	-109	-69	-8	-390	-559
	99	-222	-85	12	-52	-248
CP						
Origin	2		4	126	-29	103
Enroute	-11		-36	-24	-160	-231
Destination			35	-6	169	198
	-9		3	96	-20	70
US Rail / Short Line						
Origin						
Enroute				26		26
Destination	3			6	5	14
	3			32	5	40

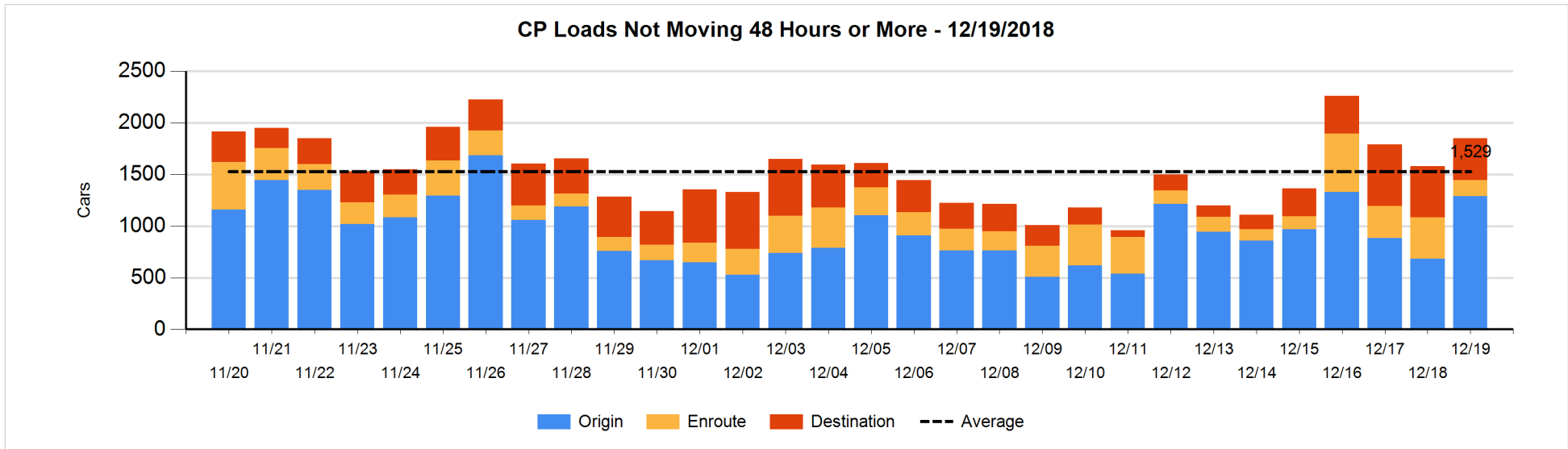
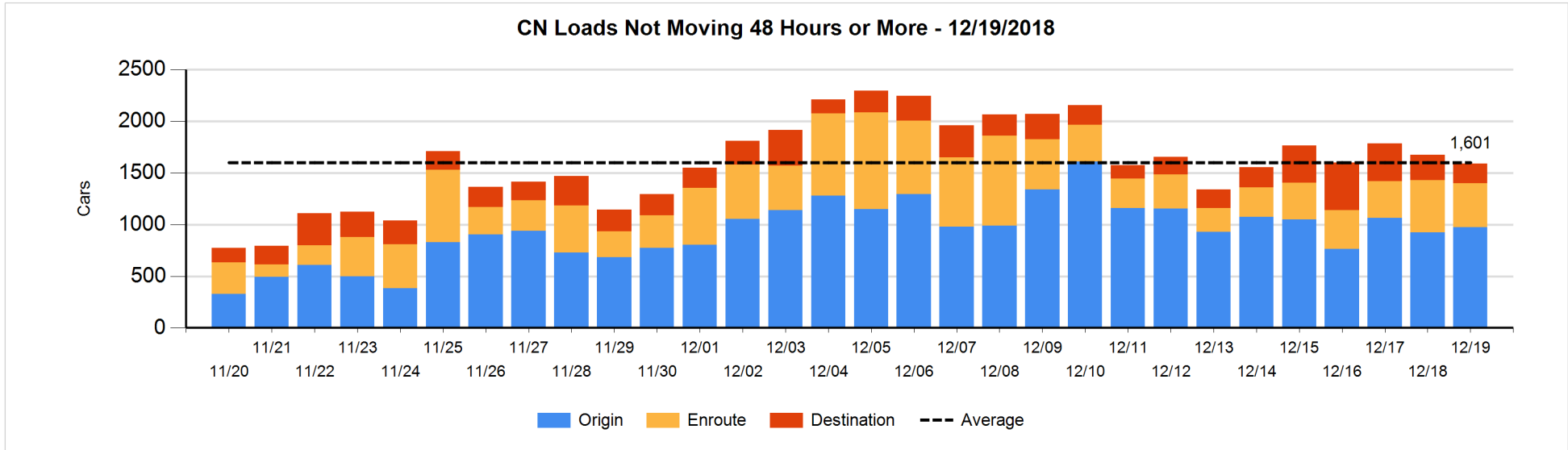


**Loads Not Moving 48 Hours or More - 12/19/2018**

	E Canada	Prince Rupert	Thunder Bay	USA/MEX	Vancouver	Total
<b>CN</b>						
Origin	55	500	49	50	318	972
Enroute	2	1		42	381	426
Destination	15	7	98	4	70	194
	72	508	147	96	769	1592
<b>CP</b>						
Origin	113		109	128	939	1289
Enroute	7		1	59	90	157
Destination			178		225	403
	120		288	187	1254	1849
<b>US Rail / Short Line</b>						
Origin						
Enroute				25		25
Destination				22	1	23
				47	1	48

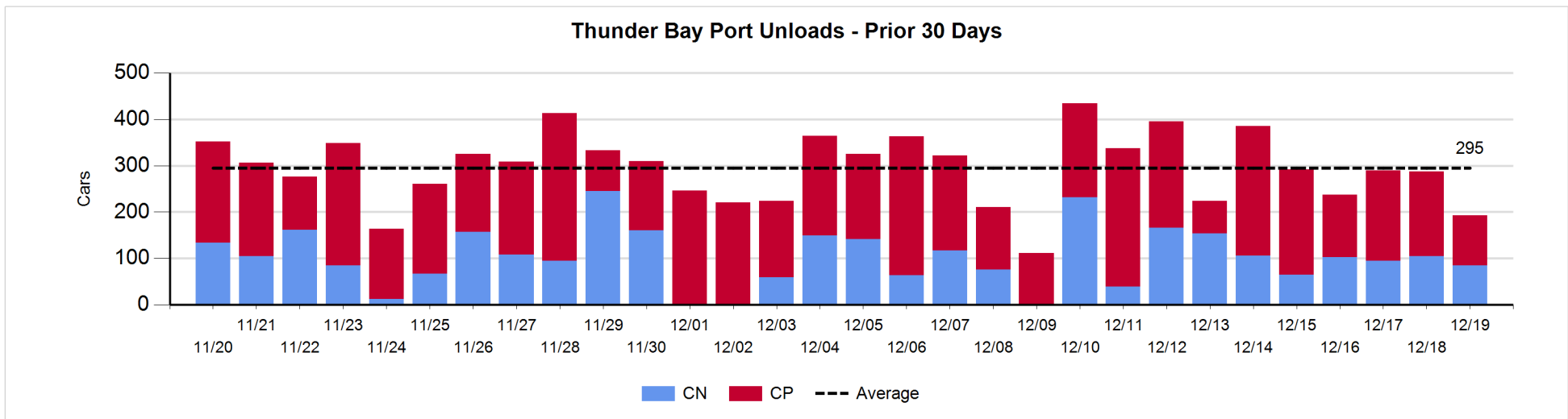
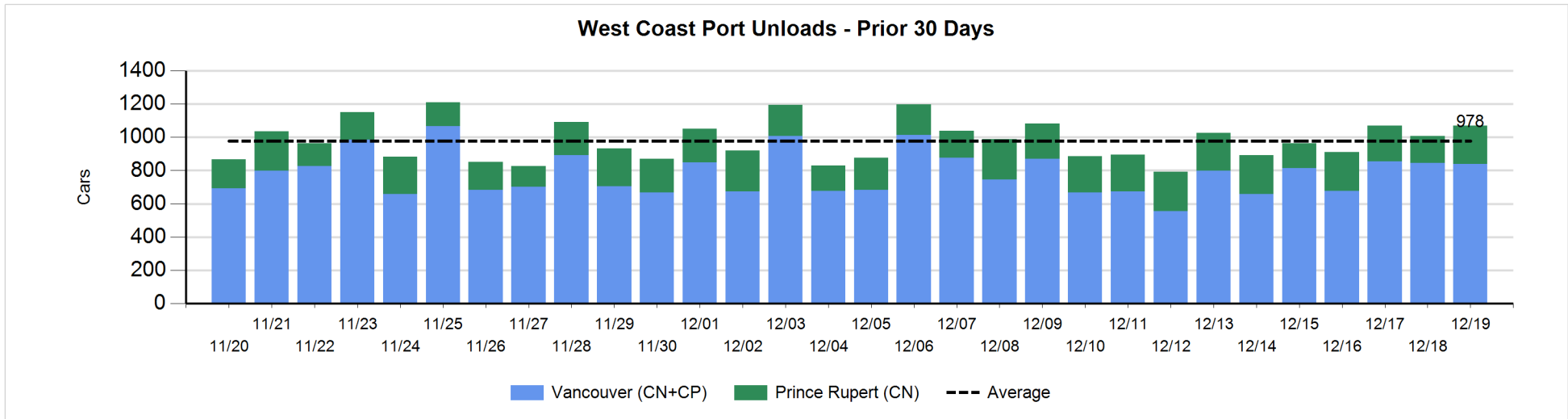
**Change in Loads Not Moving 48 Hours or More - 12/19/2018**

	E Canada	Prince Rupert	Thunder Bay	USA/MEX	Vancouver	Total
<b>CN</b>						
Origin	0	103	0	46	-100	49
Enroute	-24	-1		-1	-52	-78
Destination	6	6	-47	-9	-10	-54
	-18	108	-47	36	-162	-83
<b>CP</b>						
Origin	112		0	103	390	605
Enroute	3		0	9	-253	-241
Destination			-90		-4	-94
	115		-90	112	133	270
<b>US Rail / Short Line</b>						
Origin						
Enroute				0		0
Destination				-1	0	-1
				-1	0	-1



**Port Unloads - 12/19/2018**

	Prince Rupert	Vancouver	West Coast Total	Thunder Bay	Total
CN	231	405	636	85	721
CP		434	434	108	542
	231	839	1,070	193	1,263





**Port Terminal Status**

**Vancouver**

Daily Activity for 12/19/2018

	Cars Arrived	Cars Received in Interchange	Cars Delivered in Interchange	Cars Placed for Unloading	Loads on Wheels at Destination As of 12/19/2018
CN	58	110	5	230	330
CP	568		110	452	906
SRY		5		2	14

**Port Unloads**

	12/19	12/18	Week To Date	Last Week
CN	405	359	1,143	2,180
CP	434	487	1,396	2,664
SRY	2	8	21	57

**Age Profile of Loaded Cars Waiting Placement for Unloading**

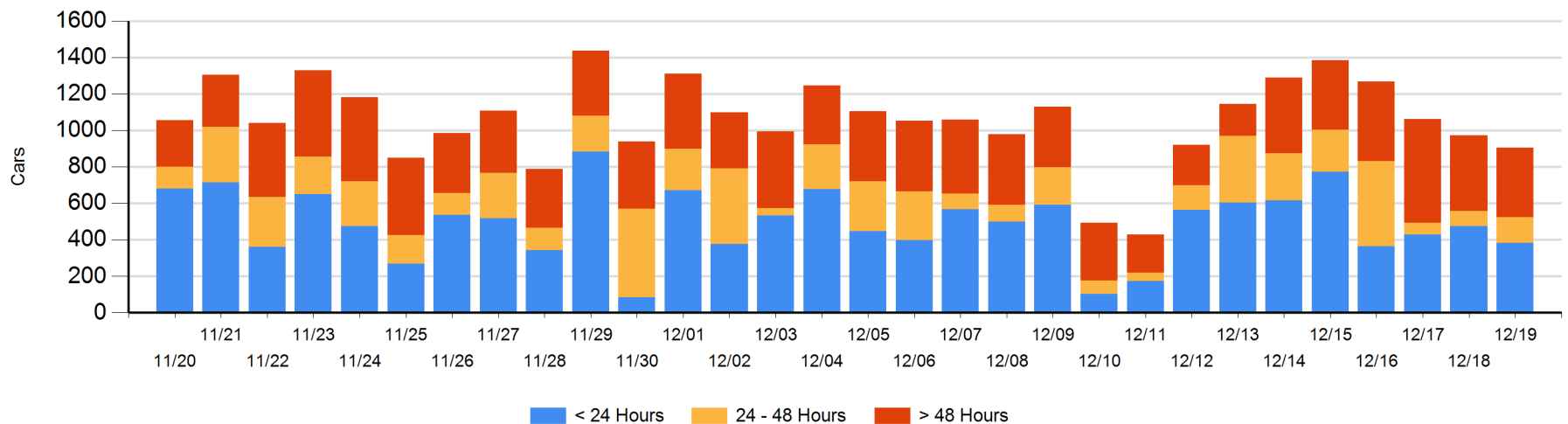
**Today**

	< 24 Hrs	24 - 48 Hrs	> 48-72 Hrs	> 72 Hrs	Total On Hand
CN	55	26	1	198	280
CP	329	112	60	123	624
SRY		2			2

**Change in Last 24 Hours**

	< 24 Hrs	24-48 Hrs	48 - 72 Hrs	> 72 Hrs
CN	-128	25	-48	-12
CP	38	32	60	-35
SRY	-2	2		

**Loaded Cars on Hand Vancouver Waiting for Placement - Last 30 Days All Railways**



**Port Terminal Status**

**Prince Rupert**

Daily Activity for 12/19/2018

	Cars Arrived	Cars Received in Interchange	Cars Delivered in Interchange	Cars Placed for Unloading	Loads on Wheels at Destination As of 12/19/2018
CN	123			120	17

**Port Unloads**

	12/19	12/18	Week To Date	Last Week
CN	231	162	608	1,521

**Age Profile of Loaded Cars Waiting Placement for Unloading**

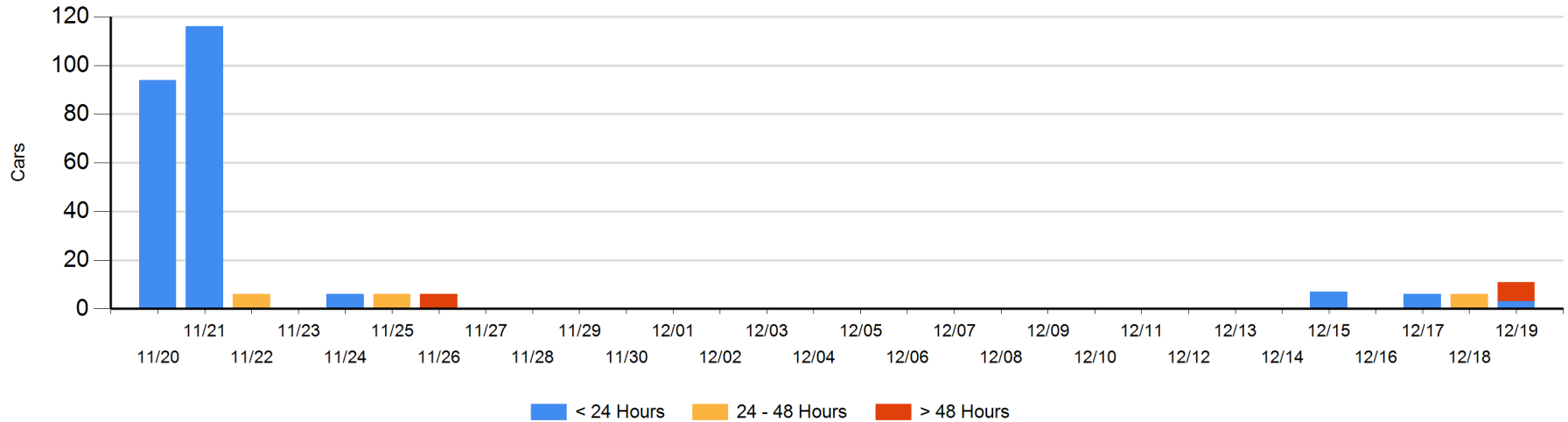
**Today**

	< 24 Hrs	24 - 48 Hrs	> 48-72 Hrs	> 72 Hrs	Total On Hand
CN	3		6	2	11

**Change in Last 24 Hours**

	< 24 Hrs	24-48 Hrs	48 - 72 Hrs	> 72 Hrs
CN	3	-6	6	2

Loaded Cars on Hand Prince Rupert Waiting for Placement - Last 30 Days All Railways



**Port Terminal Status**

**Thunder Bay**

Daily Activity for 12/19/2018

	Cars Arrived	Cars Received in Interchange	Cars Delivered in Interchange	Cars Placed for Unloading	Loads on Wheels at Destination As of 12/19/2018
CN	16			144	186
CP	143			90	435

**Port Unloads**

	12/19	12/18	Week To Date	Last Week
CN	85	105	285	865
CP	108	182	485	1,440

**Age Profile of Loaded Cars Waiting Placement for Unloading**

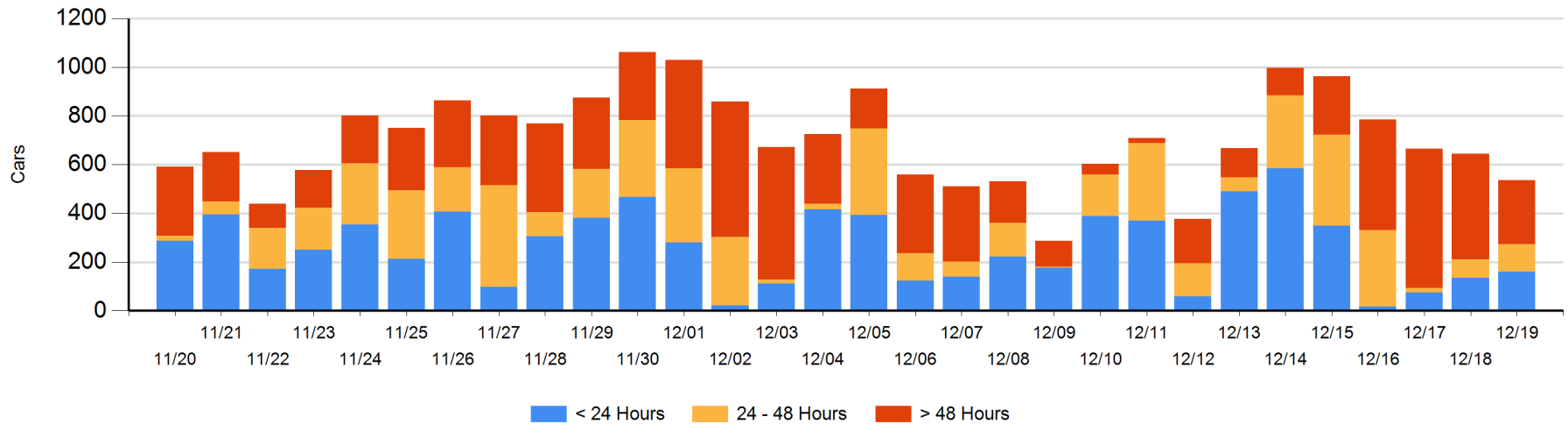
**Today**

	< 24 Hrs	24 - 48 Hrs	> 48-72 Hrs	> 72 Hrs	Total On Hand
CN	16		15	77	108
CP	143	114		172	429

**Change in Last 24 Hours**

	< 24 Hrs	24-48 Hrs	48 - 72 Hrs	> 72 Hrs
CN	-5	-75	15	-63
CP	29	114	-18	-104

**Loaded Cars on Hand Thunder Bay Waiting for Placement - Last 30 Days All Railways**



## Measurement Definitions

Loads on Wheels	<p>Count of loaded rail cars including all rail cars that have been released loaded at origin and have not been reported by the railway as unloaded at destination.</p> <p>Counts include all rail cars (hopper cars and boxcars) moving within a pipeline.</p>
Loads Not Moving	<p>Loaded rail cars for which the railways have not reported a movement event for 48 hours or more whether the rail car is at origin, enroute or at destination.</p>
Port Unloads	<p>Count of rail cars reported by railways as unloaded at the western port destinations of Vancouver, Prince Rupert and Thunder Bay.</p> <p>Unload counts include all rail cars (hopper cars and boxcars) unloaded by all receivers including major port terminals, transloaders and other receivers.</p>
Cars Arrived	<p>Count of rail cars reported as arrived at the destination railway terminal.</p>
Cars Received in Interchange	<p>Count of rail cars received in interchange by each railway within a destination railway terminal. Interchange activity is tracked for the Vancouver and Thunder Bay pipelines as applicable.</p>
Cars Delivered in Interchange	<p>Count of rail cars delivered in interchange by each railway within a destination railway terminal. Interchange activity is tracked for the Vancouver and Thunder Bay pipelines as applicable.</p>
Cars Placed for Unloading	<p>Count of rail cars reported by the railways as placed loaded at the receiver's facility for unloading.</p>
Loads on Wheels at Destination	<p>Count of rail cars that remain under load within the destination railway terminal including rail cars that have been reported as placed for unloading but not yet reported as unloaded.</p>
Waiting Placement for Unloading	<p>Count of rail cars that have been reported as arrived at the destination railway terminal but not reported as placed for unloading by the railway.</p> <p>For the Ports of Vancouver, Prince Rupert and Thunder Bay the count of rail cars waiting placement for unloading is categorized by age – i.e. the elapsed time from arrival at destination to the current report date.</p>