

SPEED READ

- Loads on wheels increased slightly overnight, reflecting an increase in CN traffic offset by reduced CP volumes. On a net basis, volumes increased due to higher traffic in the E. Canada corridor offset by reduced traffic in the Prince Rupert, Vancouver, USA/MEX and Thunder Bay corridors.
- Network fluidity deteriorated overnight, led by a rise in idle car counts on both CN and CP by 39% (+334) and 50% (+801), respectively. The total count of cars for 4+ days on both railways declined 8% (-104) overnight - presently at 1,193 cars.
- Week 27 unloads concluded behind prior week's performance by about 500 unloads, marking reduced unloads at Vancouver and Thunder Bay offset by improved week over week performance at Prince Rupert.

Loads on Wheels

- Loads on wheels increased marginally (+37) overnight, due to higher volumes on CN offset by reduced volumes on CP - combined total at 10,166 and 1% above the trailing 30-day average.
- On a net basis, the rise in loads on wheels reflects higher volumes in the E. Canada corridor offset by reduced traffic in the Prince Rupert, Vancouver, USA/MEX and Thunder Bay corridors.
- CN volumes rose 9% (+420) overnight, with higher volumes in the Vancouver and E. Canada corridors offset by reduced volumes in the Prince Rupert, USA/MEX and Thunder Bay corridors. System wide CN loads on wheels currently at 4,985 and 2% below the trailing 30-day average.
- CP volumes decreased 7% (-385) overnight, driven by a decline in volumes across all corridors other than E. Canada. CP system wide loads on wheels now at 4,949 and 4% above the trailing 30-day average.
- Vancouver now at 6,629, decreased slightly (-14) overnight, now 2% above the trailing 30-day average.
- The Prince Rupert pipeline currently at 1,282, decreased significantly by 17% (-257) overnight, and 13% below the trailing 30 day-average.
- Thunder Bay volumes fell (-1) overnight - currently at 5, the lowest seen in the last 30 days, and 98% below the trailing 30-day average, with 100% of traffic moving on CP.

Hopper Car Rationing

- No hopper car rationing was reported for either CN or CP in week 26.

Loads Not Moving

- **The count of cars not moving for 48+ hours increased significantly by 46% (+1,135) overnight, marking higher counts on both CN and CP. Idle car counts currently at 3,578, the highest seen in the last 30 days, and 53% above the trailing 30-day average.**
- CN
 - **The count of idle cars for 48+ hours increased 39% (+334) overnight - currently at 1,182 cars.**
 - The number of cars idle for 4+ days declined 10% (-38) overnight - currently at 332 cars.
 - The count of cars not moving for 7+ days decreased 30% (-52) overnight - currently at 122 cars.
 - Vancouver represents 57% of all idle cars.
 - In total 29% of all idle cars are dwelling at origin locations.
- CP
 - **CP idle car counts for 48+ hours increased significantly by 50% (+801) overnight - currently at 2,396 cars, the highest seen in the last 30 days.**
 - The number of cars idle for 4+ days fell 7% (-66) overnight - currently at 861 cars.

- The number of cars idle for 7+ days gained 33% (+63) overnight - currently at 253 cars.
- Vancouver accounts for 71% of all idle cars.
- In total 69% of all idle cars are dwelling at origin locations.

Port Performance

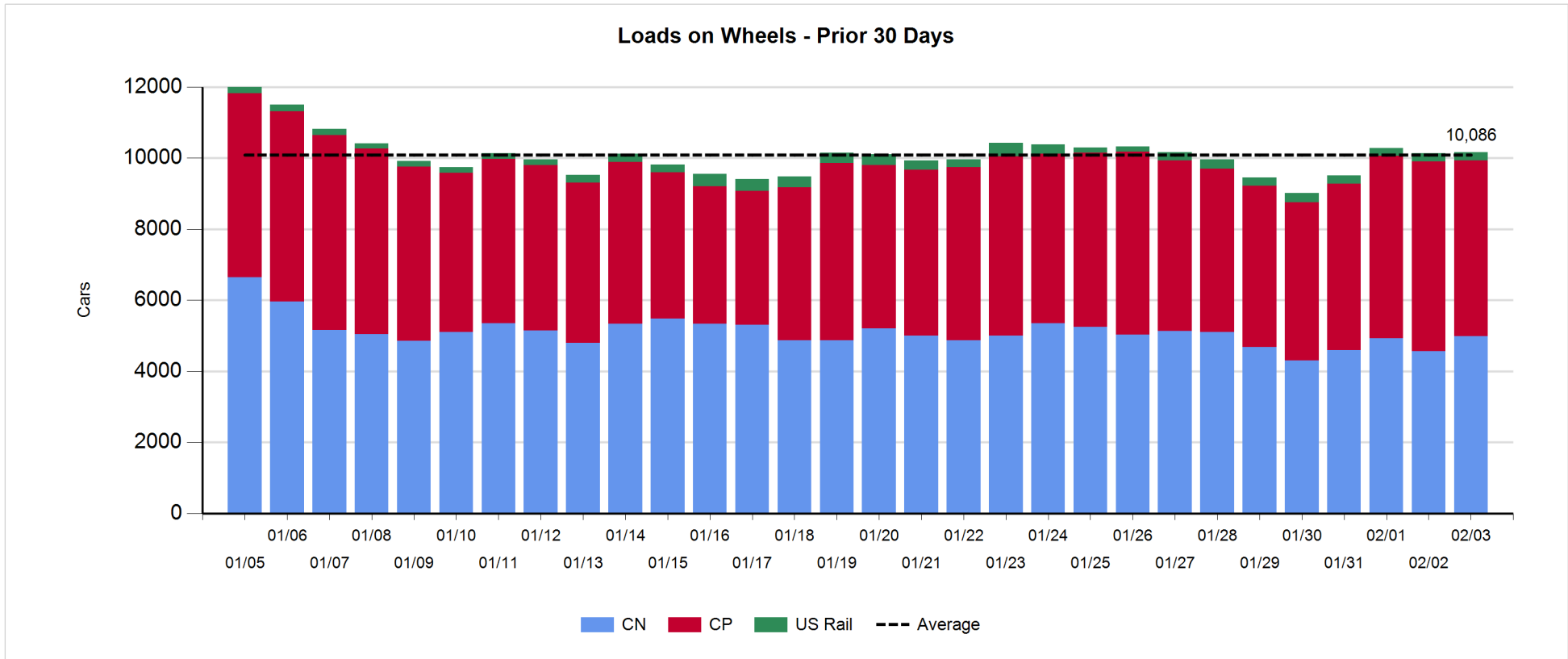
- CN and CP reported a total of 864 cars unloaded at the three major ports, now 18% below the trailing 30 day-average. Week 27 unloads concluded behind last week's pace by about 500 unloads, marking reduced unloads at Vancouver and Thunder Bay offset by higher unloads at Prince Rupert.
- Vancouver
 - 645 unloads reported by CN and CP at the Port of Vancouver; CN - 219 and CP - 426. Week 27 unloads finished behind last week's performance by 450 unloads.
 - There are about 1,250 cars on site at Vancouver with 500 cars arriving at the port in the last 24 hours.
 - CN and CP have 1,100 cars in British Columbia en route to Vancouver, with about 750 cars at Kamloops and west, and 73% of traffic moving on CP.
- Prince Rupert
 - Prince Rupert reported 218 unloads, ended ahead of last week's unloads by nearly 150 unloads.
 - Loads on wheels now above 1,000 cars - currently at 1,282 cars.
 - There are about 550 cars west of Jasper en route to Prince Rupert.
 - There are nearly 150 cars on site at Prince Rupert with more than 50 cars arriving at the port in the last 24 hours.
- Thunder Bay
 - 1 unload was reported at Thunder Bay yesterday. Week 27 unloads ended behind last week's pace by nearly 200 unloads.
 - There are 5 cars on site at Thunder Bay with 1 car arriving at the port in the prior 24 hours.
 - There are zero cars en route to Thunder Bay from Winnipeg and east.

Daily Loads on Wheels - 2/3/2019

	E Canada	Prince Rupert	Thunder Bay	USA/MEX	Vancouver	Total
CN	896	1,282		179	2,628	4,985
CP	612		5	405	3,927	4,949
Short Line	14				74	88
US Rail				144		144
	1,522	1,282	5	728	6,629	10,166

Change in Loads on Wheels - Prior 24 Hours

	E Canada	Prince Rupert	Thunder Bay	USA/MEX	Vancouver	Total
CN	202	-257	-1	-3	479	420
CP	113		0	-3	-495	-385
Short Line	0				2	2
US Rail				0		0
	315	-257	-1	-6	-14	37

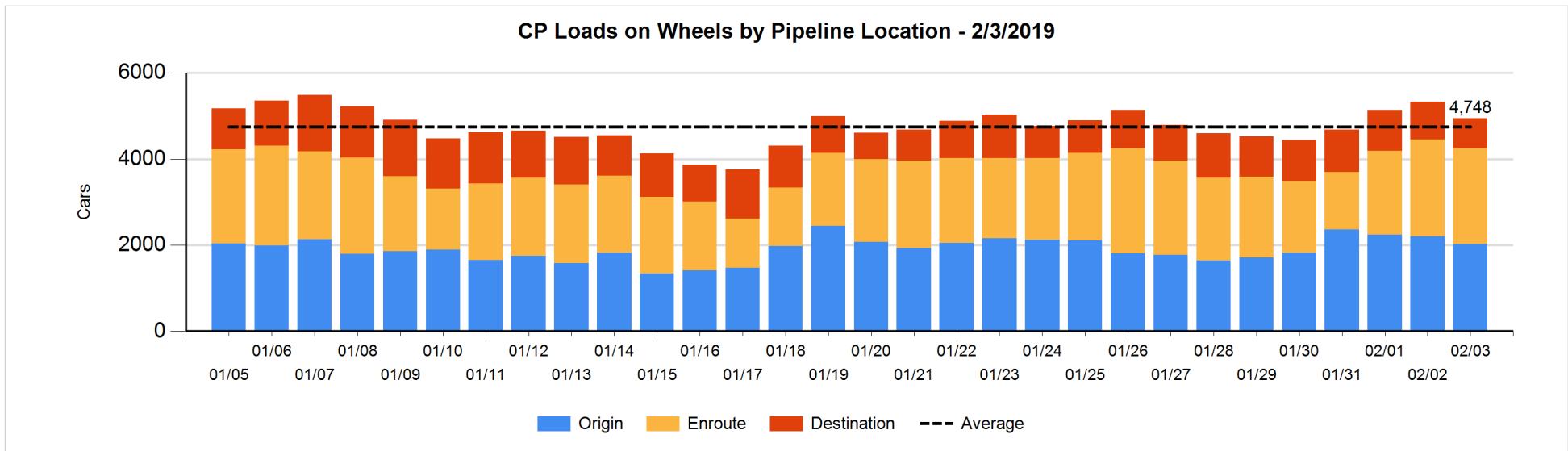
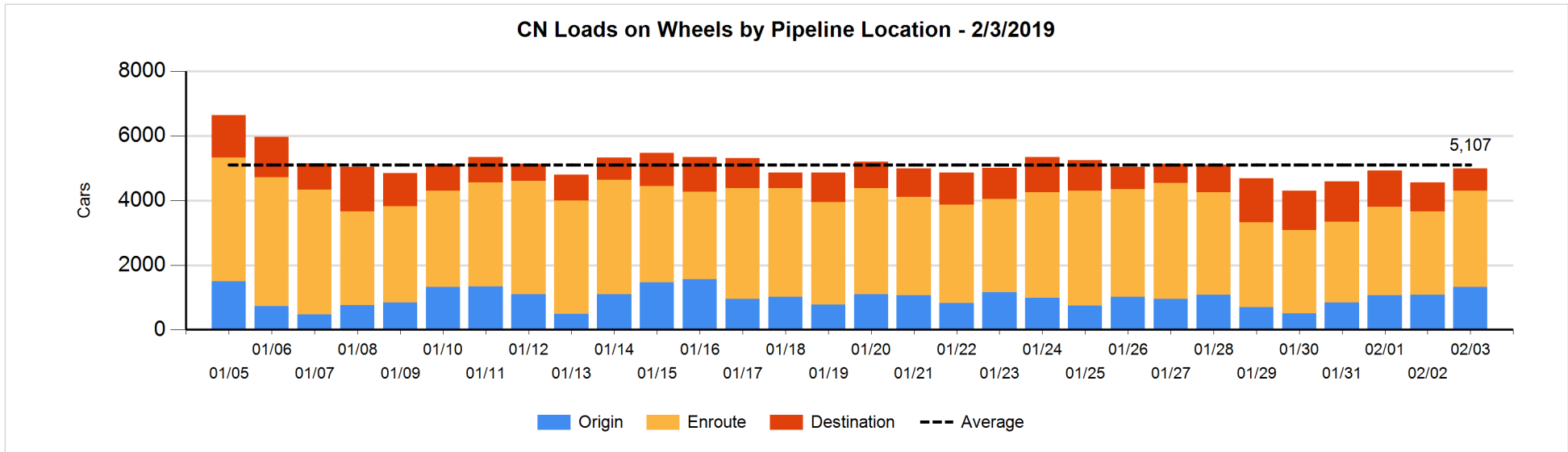


Daily Loads on Wheels By Pipeline Location - 2/3/2019

	E Canada	Prince Rupert	Thunder Bay	USA/MEX	Vancouver	Total
CN						
Origin	199	254		15	850	1,318
Enroute	666	892		153	1,280	2,991
Destination	31	136		11	498	676
	896	1,282		179	2,628	4,985
CP						
Origin	459			129	1,441	2,029
Enroute	153			243	1,826	2,222
Destination			5	33	660	698
	612		5	405	3,927	4,949
US Rail / Short Line						
Origin						
Enroute				84		84
Destination	14			60	74	148
	14			144	74	232

Change in Daily Loads on Wheels By Pipeline Location - Prior 24 Hours

	E Canada	Prince Rupert	Thunder Bay	USA/MEX	Vancouver	Total
CN						
Origin	150	-93		-3	181	235
Enroute	126	27		-1	256	408
Destination	-74	-191	-1	1	42	-223
	202	-257	-1	-3	479	420
CP						
Origin	113		-1	0	-290	-178
Enroute	0			-7	-12	-19
Destination			1	4	-193	-188
	113		0	-3	-495	-385
US Rail / Short Line						
Origin						
Enroute				-2		-2
Destination	0			2	2	4
	0			0	2	2

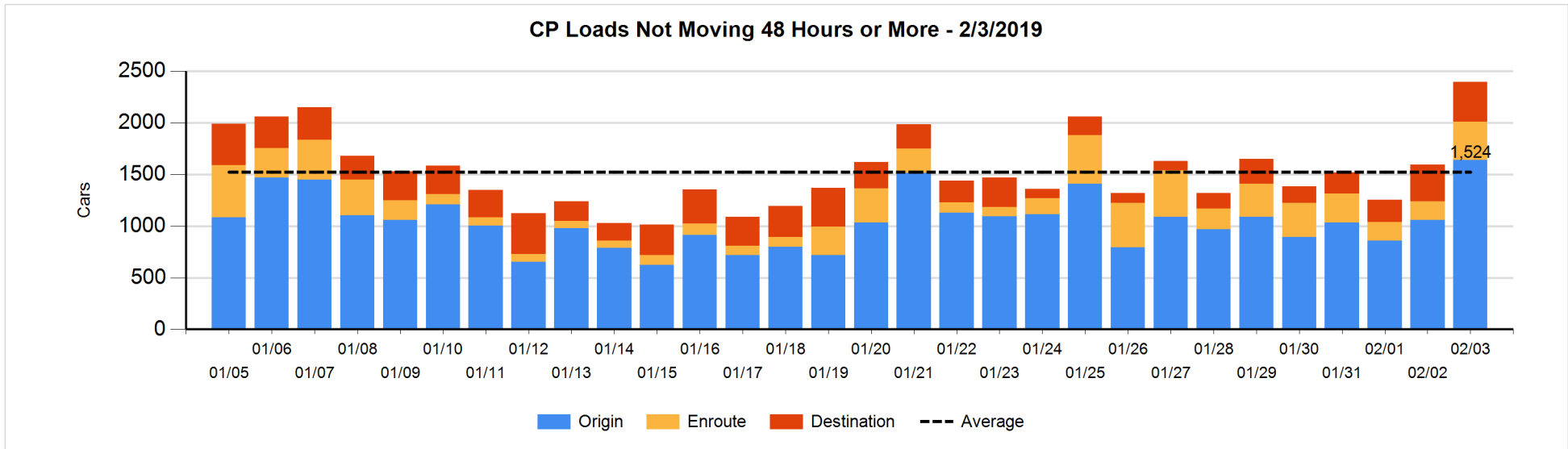
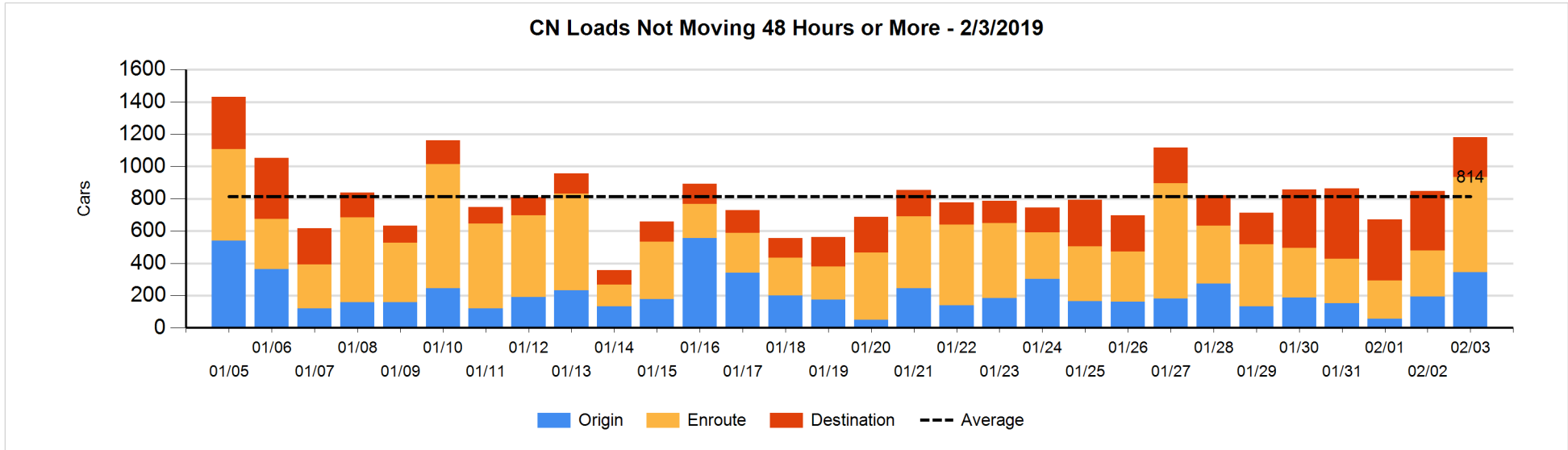


Loads Not Moving 48 Hours or More - 2/3/2019

	E Canada	Prince Rupert	Thunder Bay	USA/MEX	Vancouver	Total
CN						
Origin		102		5	237	344
Enroute	101	146		13	330	590
Destination	25	111		8	104	248
	126	359		26	671	1182
CP						
Origin	346			129	1167	1642
Enroute	27			168	176	371
Destination			4	17	362	383
	373		4	314	1705	2396
US Rail / Short Line						
Origin						
Enroute				44		44
Destination	14			42	34	90
	14			86	34	134

Change in Loads Not Moving 48 Hours or More - 2/3/2019

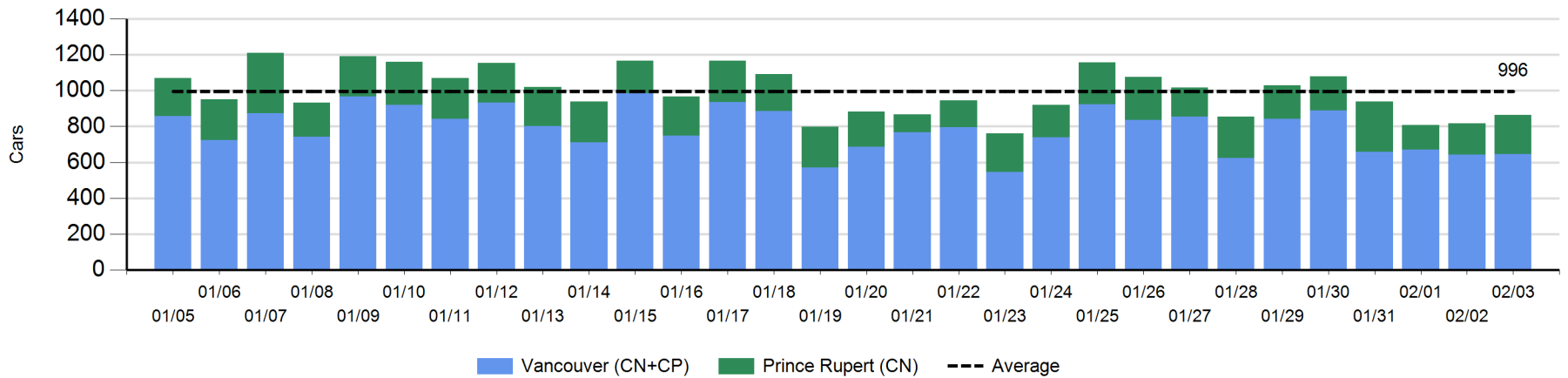
	E Canada	Prince Rupert	Thunder Bay	USA/MEX	Vancouver	Total
CN						
Origin	-49	2		-3	200	150
Enroute	17	33		6	249	305
Destination	1	-43	-1	7	-85	-121
	-31	-8	-1	10	364	334
CP						
Origin	26		-1	2	555	582
Enroute	-8			80	119	191
Destination			0	17	11	28
	18		-1	99	685	801
US Rail / Short Line						
Origin						
Enroute				25		25
Destination	12			22	-9	25
	12			47	-9	50



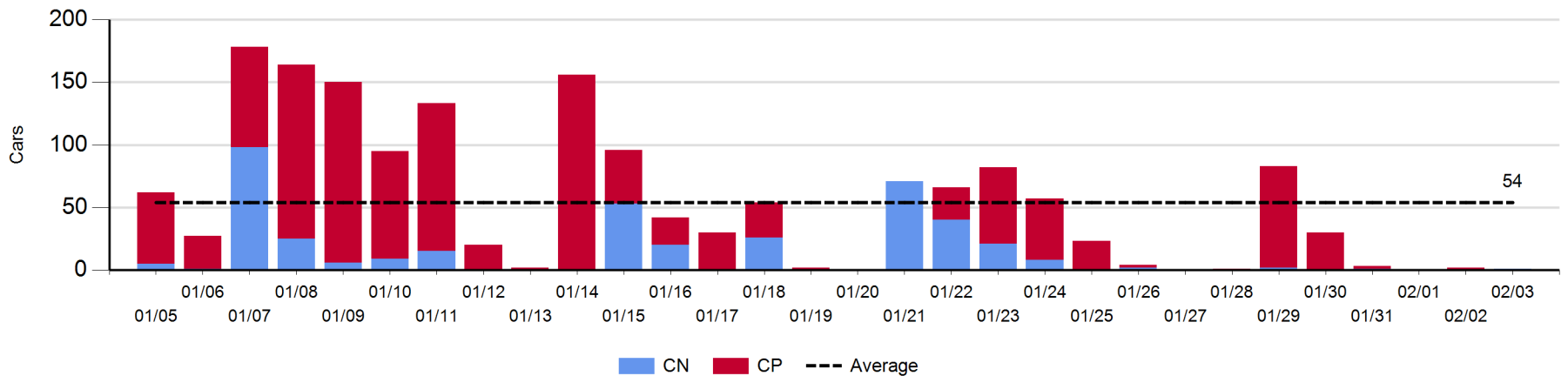
Port Unloads - 2/3/2019

	Prince Rupert	Vancouver	West Coast Total	Thunder Bay	Total
CN	218	219	437	1	438
CP		426	426		426
	218	645	863	1	864

West Coast Port Unloads - Prior 30 Days



Thunder Bay Port Unloads - Prior 30 Days



Port Terminal Status

Vancouver

Daily Activity for 2/3/2019

	Cars Arrived	Cars Received in Interchange	Cars Delivered in Interchange	Cars Placed for Unloading	Loads on Wheels at Destination As of 2/3/2019
CN	153	104	72	290	498
CP	347	72	109	396	660
SRY		5		8	74

Port Unloads

	02/03	02/02	Week To Date	Last Week
CN	219	242	2,108	2,670
CP	426	400	2,862	2,786
SRY	4	9	103	57

Age Profile of Loaded Cars Waiting Placement for Unloading

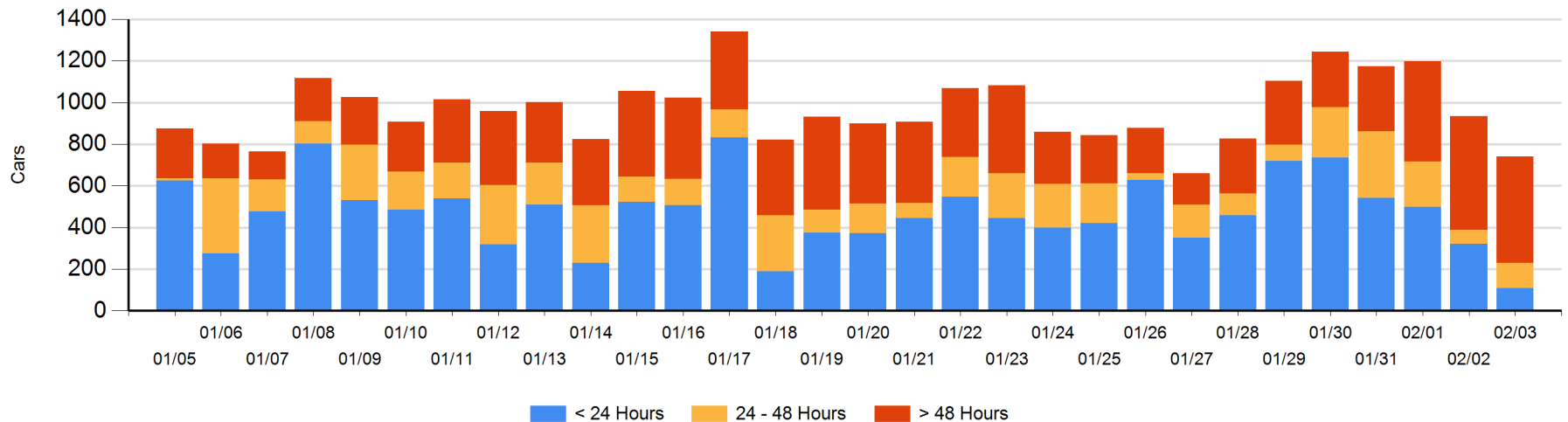
Today

	< 24 Hrs	24 - 48 Hrs	> 48-72 Hrs	> 72 Hrs	Total On Hand
CN	8	73	13	167	261
CP	101	48	45	287	481
SRY					0

Change in Last 24 Hours

	< 24 Hrs	24-48 Hrs	48 - 72 Hrs	> 72 Hrs
CN	-139	60	-28	34
CP	-72	-6	-69	28
SRY		-1		

Loaded Cars on Hand Vancouver Waiting for Placement - Last 30 Days All Railways



Port Terminal Status

Prince Rupert

Daily Activity for 2/3/2019

	Cars Arrived	Cars Received in Interchange	Cars Delivered in Interchange	Cars Placed for Unloading	Loads on Wheels at Destination As of 2/3/2019
CN	70			70	136

Port Unloads

	02/03	02/02	Week To Date	Last Week
CN	218	175	1,420	1,286

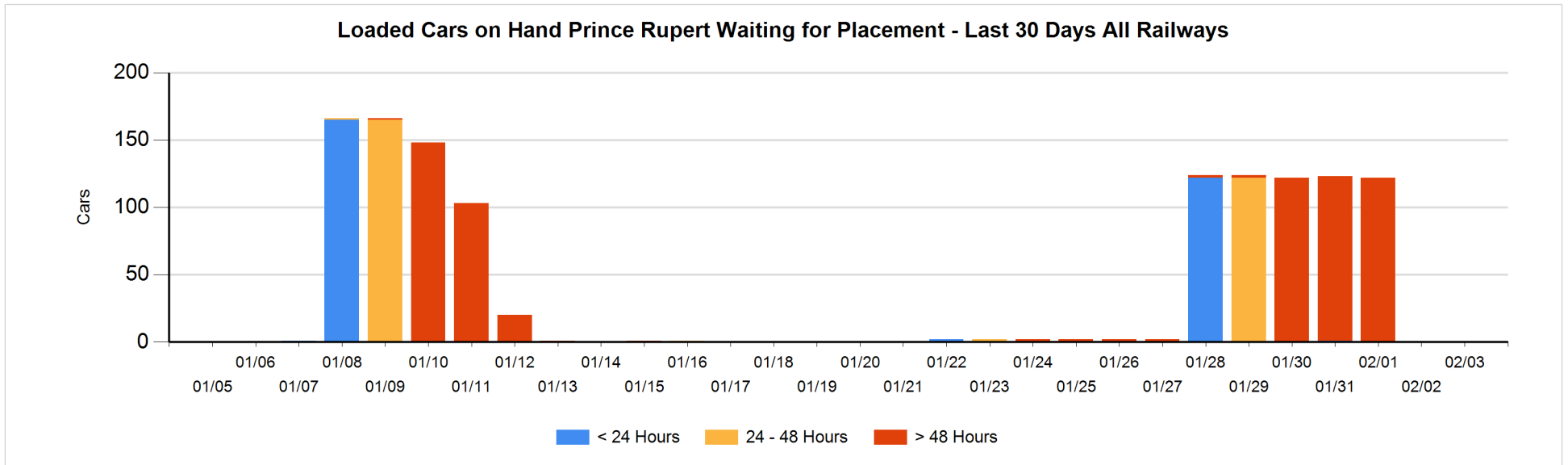
Age Profile of Loaded Cars Waiting Placement for Unloading

Today

	< 24 Hrs	24 - 48 Hrs	> 48-72 Hrs	> 72 Hrs	Total On Hand
CN					0

Change in Last 24 Hours

	< 24 Hrs	24-48 Hrs	48 - 72 Hrs	> 72 Hrs
CN				



Port Terminal Status

Thunder Bay

Daily Activity for 2/3/2019

	Cars Arrived	Cars Received in Interchange	Cars Delivered in Interchange	Cars Placed for Unloading	Loads on Wheels at Destination As of 2/3/2019
CN					
CP	1				5

Port Unloads

	02/03	02/02	Week To Date	Last Week
CN	1		4	142
CP		2	116	161

Age Profile of Loaded Cars Waiting Placement for Unloading

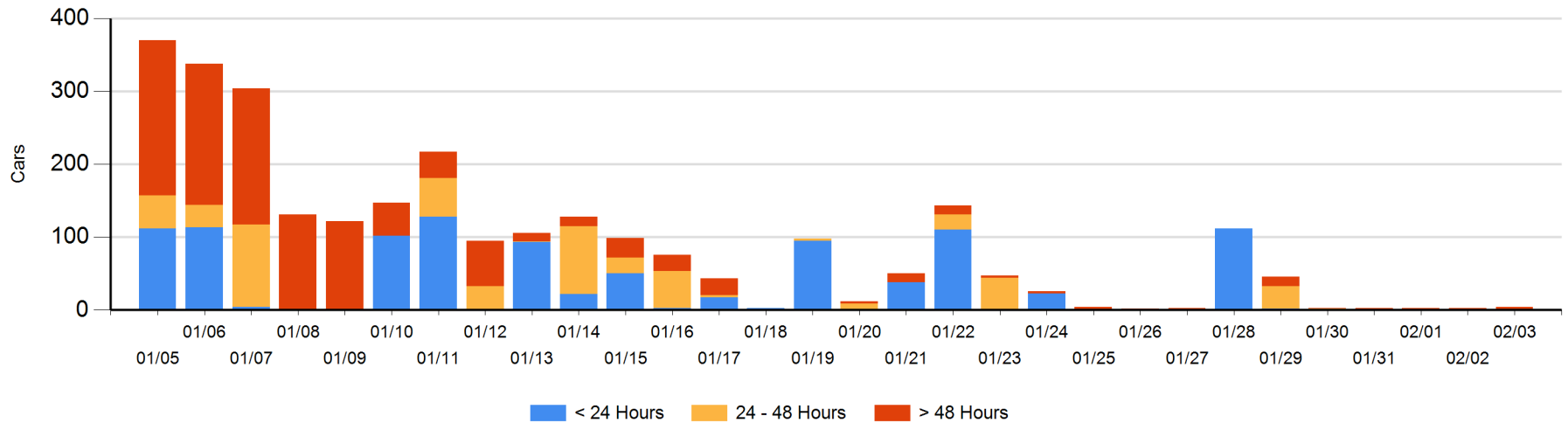
Today

	< 24 Hrs	24 - 48 Hrs	> 48-72 Hrs	> 72 Hrs	Total On Hand
CN					0
CP	1			3	4

Change in Last 24 Hours

	< 24 Hrs	24-48 Hrs	48 - 72 Hrs	> 72 Hrs
CN				
CP	1			0

Loaded Cars on Hand Thunder Bay Waiting for Placement - Last 30 Days All Railways



Measurement Definitions

Loads on Wheels	<p>Count of loaded rail cars including all rail cars that have been released loaded at origin and have not been reported by the railway as unloaded at destination.</p> <p>Counts include all rail cars (hopper cars and boxcars) moving within a pipeline.</p>
Loads Not Moving	<p>Loaded rail cars for which the railways have not reported a movement event for 48 hours or more whether the rail car is at origin, enroute or at destination.</p>
Port Unloads	<p>Count of rail cars reported by railways as unloaded at the western port destinations of Vancouver, Prince Rupert and Thunder Bay.</p> <p>Unload counts include all rail cars (hopper cars and boxcars) unloaded by all receivers including major port terminals, transloaders and other receivers.</p>
Cars Arrived	<p>Count of rail cars reported as arrived at the destination railway terminal.</p>
Cars Received in Interchange	<p>Count of rail cars received in interchange by each railway within a destination railway terminal. Interchange activity is tracked for the Vancouver and Thunder Bay pipelines as applicable.</p>
Cars Delivered in Interchange	<p>Count of rail cars delivered in interchange by each railway within a destination railway terminal. Interchange activity is tracked for the Vancouver and Thunder Bay pipelines as applicable.</p>
Cars Placed for Unloading	<p>Count of rail cars reported by the railways as placed loaded at the receiver's facility for unloading.</p>
Loads on Wheels at Destination	<p>Count of rail cars that remain under load within the destination railway terminal including rail cars that have been reported as placed for unloading but not yet reported as unloaded.</p>
Waiting Placement for Unloading	<p>Count of rail cars that have been reported as arrived at the destination railway terminal but not reported as placed for unloading by the railway.</p> <p>For the Ports of Vancouver, Prince Rupert and Thunder Bay the count of rail cars waiting placement for unloading is categorized by age – i.e. the elapsed time from arrival at destination to the current report date.</p>