

SPEED READ

- Loads on wheels fell marginally overnight, reflecting a decline in CN volumes offset by higher CP volumes. On a net basis, volumes declined due to lower traffic in the Prince Rupert and USA/MEX corridors offset by higher volumes in the Vancouver and E. Canada corridors.
- Network fluidity improved overnight, led by a decline in idle car counts on CP by 15% (-430) offset by a rise in idle car counts on CN by 18% (+351). The total count of cars for 4+ days on both railways decreased 13% (-458) overnight - currently at 2,938 cars.
- Week 28 unloads concluded behind prior week's performance by 1,400 unloads, marking lower unloads across all three major ports - Vancouver, Thunder Bay and Prince Rupert.

Loads on Wheels

- Loads on wheels decreased slightly by 1% (-112) overnight, due to lower volumes on CN offset by higher volumes on CP - combined total at 10,352 and 3% above the trailing 30-day average.
- On a net basis, the decline in loads on wheels reflects lower volumes in the Prince Rupert and USA/MEX corridors offset by higher volumes in the Vancouver and E. Canada corridors.
- CN volumes fell 3% (-151) overnight, with lower volumes across all corridors other than E. Canada. System wide CN loads on wheels now at 5,403 and 5% above the trailing 30-day average.
- CP volumes increased marginally by 1% (+42) overnight, driven by a rise in volumes in the Vancouver corridor offset by a decline in volumes in the E. Canada corridor. CP system wide loads on wheels currently at 4,740 and 2% above the trailing 30-day average.
- Vancouver now at 6,698, rose for the third consecutive day, up 1% (+76) overnight, now 5% above the trailing 30-day average.
- The Prince Rupert pipeline currently at 1,623, decreased significantly by 10% (-183) overnight, and 6% above the trailing 30-day average.
- Thunder Bay volumes remained unchanged (0) overnight - now at 6 and 96% below the trailing 30-day average, with 67% of traffic moving on CP.

Hopper Car Rationing

- No hopper car rationing was reported for either CN or CP in week 27.

Loads Not Moving

- **The count of cars not moving for 48+ hours fell 2% (-79) overnight, marking lower counts on CP offset by higher counts on CN. Idle car counts currently at 4,726 and 76% above the trailing 30-day average.**
- CN
 - **The count of idle cars for 48+ hours increased 18% (+351) overnight - presently at 2,332 cars, the highest seen in the last 30 days.**
 - The number of cars idle for 4+ days declined 9% (-129) overnight - now at 1,233 cars.
 - The count of cars not moving for 7+ days surged by 142% (+235) overnight - currently at 400 cars, the highest seen in the last 30 days.
 - Vancouver represents 47% of all idle cars.
 - In total 61% of all idle cars are dwelling at origin locations.
- CP
 - **CP idle car counts for 48+ hours declined 15% (-430) overnight - presently at 2,394 cars.**
 - The number of cars idle for 4+ days fell 16% (-329) overnight - presently at 1,705 cars.
 - The number of cars idle for 7+ days decreased 15% (-169) overnight - presently at 990 cars.

- Vancouver accounts for 79% of all idle cars.
- In total 76% of all idle cars are dwelling at origin locations.

Port Performance

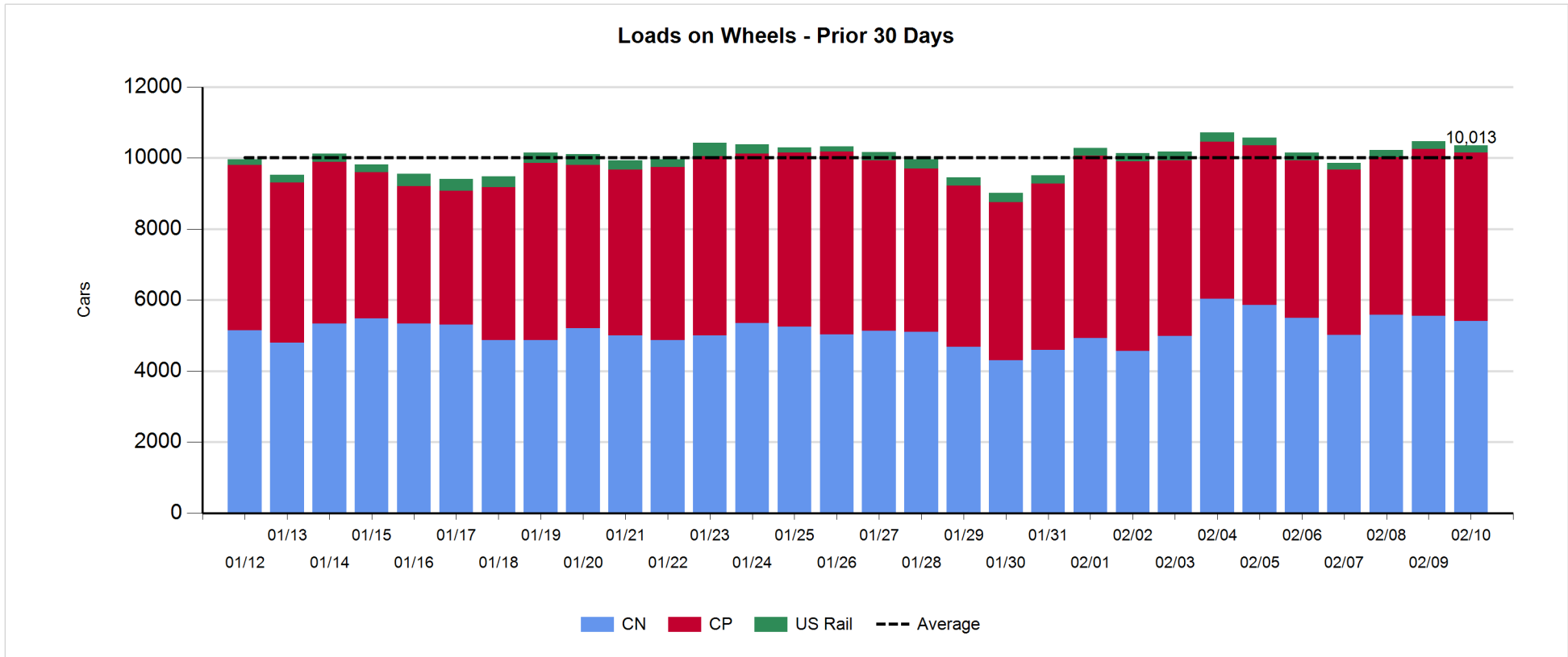
- CN and CP reported a total of 695 cars unloaded at the three major ports, now 26% below the trailing 30 day-average. Week 28 unloads concluded behind last week's pace by 1,400 unloads, marking lower unloads across all three major ports - Vancouver, Thunder Bay and Prince Rupert.
- Vancouver
 - 506 unloads, the lowest seen in the last 30 days, was reported by CN and CP at the Port of Vancouver; CN - 104 and CP - 402. Week 28 unloads concluded behind last week's performance by 700 unloads.
 - There are less than 450 cars on site at Vancouver with 350 cars arriving at the port in the last 24 hours.
 - CN and CP have 550 cars in British Columbia en route to Vancouver, with more than 250 cars at Kamloops and west, and 57% of traffic moving on CN.
- Prince Rupert
 - Prince Rupert reported 183 unloads, ended behind last week's unloads by 600 unloads.
 - Loads on wheels now above 1,000 cars - presently at 1,623 cars.
 - There are more than 200 cars west of Jasper en route to Prince Rupert.
 - There are more than 250 cars on site at Prince Rupert with 150 cars arriving at the port in the last 24 hours.
- Thunder Bay
 - 6 unloads were reported at Thunder Bay yesterday. Week 28 unloads concluded behind last week's pace by more than 100 unloads.
 - There are 5 cars on site at Thunder Bay with zero cars arriving at the port in the prior 24 hours.
 - There are 1 car en route to Thunder Bay from Winnipeg and east.

Daily Loads on Wheels - 2/10/2019

| | E Canada | Prince Rupert | Thunder Bay | USA/MEX | Vancouver | Total |
|------------|----------|---------------|-------------|---------|-----------|--------|
| CN | 808 | 1,623 | 2 | 152 | 2,818 | 5,403 |
| CP | 708 | | 4 | 186 | 3,842 | 4,740 |
| Short Line | 42 | | | | 38 | 80 |
| US Rail | | | | 129 | | 129 |
| | 1,558 | 1,623 | 6 | 467 | 6,698 | 10,352 |

Change in Loads on Wheels - Prior 24 Hours

| | E Canada | Prince Rupert | Thunder Bay | USA/MEX | Vancouver | Total |
|------------|----------|---------------|-------------|---------|-----------|-------|
| CN | 71 | -183 | 0 | -4 | -35 | -151 |
| CP | -65 | | 0 | 0 | 107 | 42 |
| Short Line | 0 | | | | 4 | 4 |
| US Rail | | | | -7 | | -7 |
| | 6 | -183 | 0 | -11 | 76 | -112 |

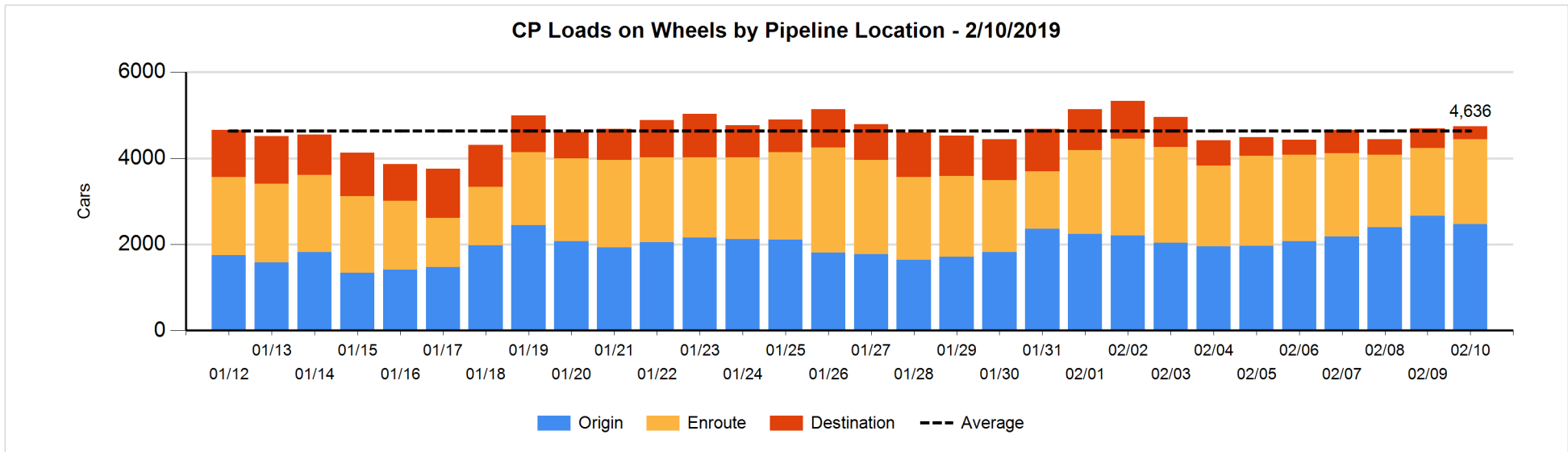
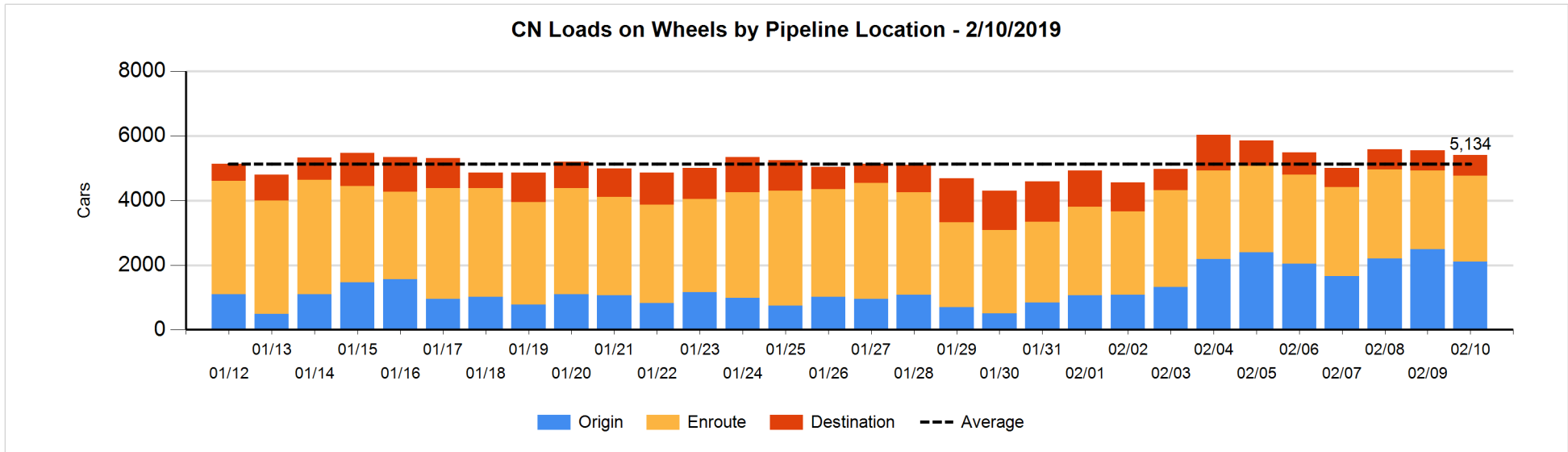


Daily Loads on Wheels By Pipeline Location - 2/10/2019

| | E Canada | Prince Rupert | Thunder Bay | USA/MEX | Vancouver | Total |
|----------------------|----------|---------------|-------------|---------|-----------|-------|
| CN | | | | | | |
| Origin | 247 | 529 | | 60 | 1,268 | 2,104 |
| Enroute | 487 | 832 | 1 | 50 | 1,289 | 2,659 |
| Destination | 74 | 262 | 1 | 42 | 261 | 640 |
| | 808 | 1,623 | 2 | 152 | 2,818 | 5,403 |
| CP | | | | | | |
| Origin | 280 | | | 7 | 2,186 | 2,473 |
| Enroute | 292 | | | 162 | 1,518 | 1,972 |
| Destination | 136 | | 4 | 17 | 138 | 295 |
| | 708 | | 4 | 186 | 3,842 | 4,740 |
| US Rail / Short Line | | | | | | |
| Origin | | | | | | |
| Enroute | | | | 73 | | 73 |
| Destination | 42 | | | 56 | 38 | 136 |
| | 42 | | | 129 | 38 | 209 |

Change in Daily Loads on Wheels By Pipeline Location - Prior 24 Hours

| | E Canada | Prince Rupert | Thunder Bay | USA/MEX | Vancouver | Total |
|----------------------|----------|---------------|-------------|---------|-----------|-------|
| CN | | | | | | |
| Origin | 33 | -150 | | -2 | -269 | -388 |
| Enroute | 37 | 1 | 0 | -16 | 205 | 227 |
| Destination | 1 | -34 | 0 | 14 | 29 | 10 |
| | 71 | -183 | 0 | -4 | -35 | -151 |
| CP | | | | | | |
| Origin | -104 | | | 0 | -87 | -191 |
| Enroute | 10 | | | -1 | 388 | 397 |
| Destination | 29 | | 0 | 1 | -194 | -164 |
| | -65 | | 0 | 0 | 107 | 42 |
| US Rail / Short Line | | | | | | |
| Origin | | | | | | |
| Enroute | | | | 2 | | 2 |
| Destination | 0 | | | -9 | 4 | -5 |
| | 0 | | | -7 | 4 | -3 |

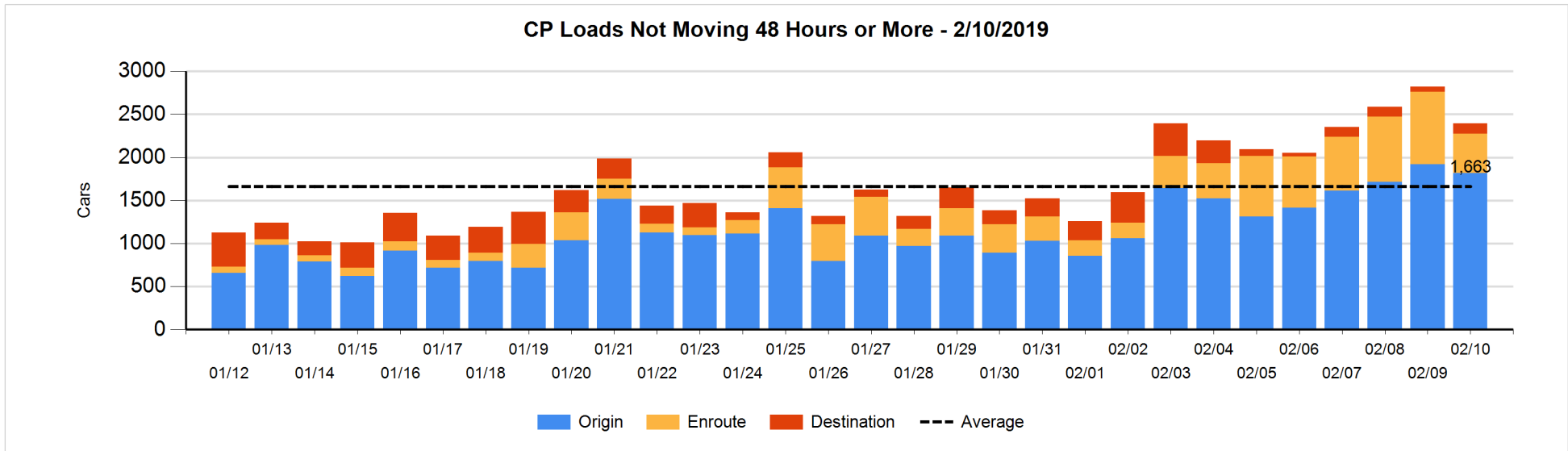
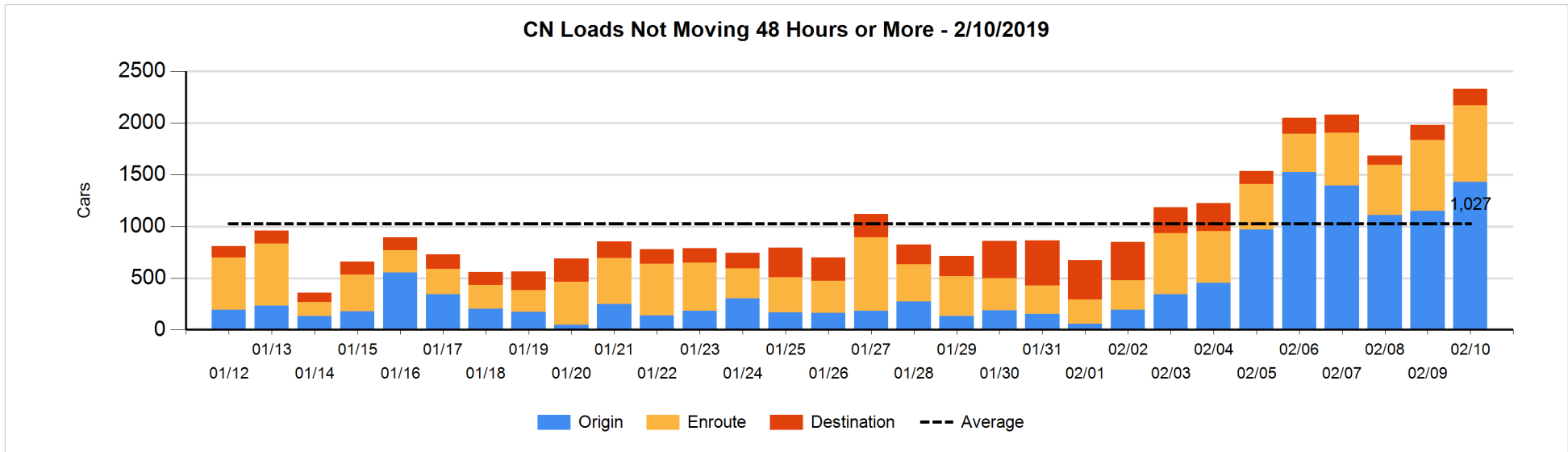


Loads Not Moving 48 Hours or More - 2/10/2019

| | E Canada | Prince Rupert | Thunder Bay | USA/MEX | Vancouver | Total |
|----------------------|----------|---------------|-------------|---------|-----------|-------|
| CN | | | | | | |
| Origin | 176 | 418 | | 53 | 783 | 1430 |
| Enroute | 241 | 200 | | 30 | 268 | 739 |
| Destination | 71 | 13 | | 25 | 54 | 163 |
| | 488 | 631 | | 108 | 1105 | 2332 |
| CP | | | | | | |
| Origin | 280 | | | 7 | 1529 | 1816 |
| Enroute | 37 | | | 111 | 308 | 456 |
| Destination | 43 | | 4 | 16 | 59 | 122 |
| | 360 | | 4 | 134 | 1896 | 2394 |
| US Rail / Short Line | | | | | | |
| Origin | | | | | | |
| Enroute | | | | 21 | | 21 |
| Destination | 42 | | | 32 | 19 | 93 |
| | 42 | | | 53 | 19 | 114 |

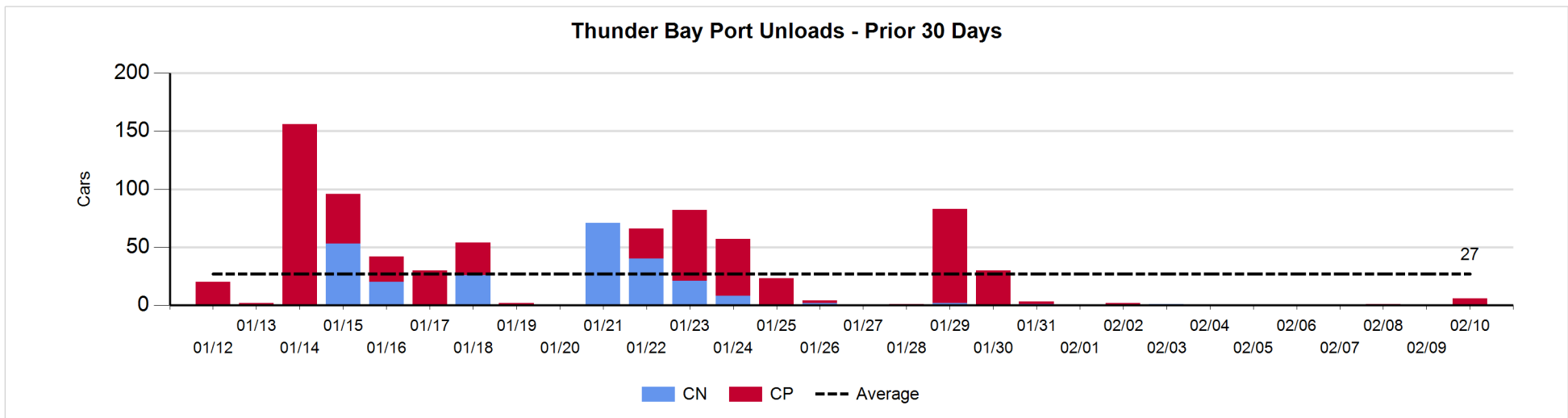
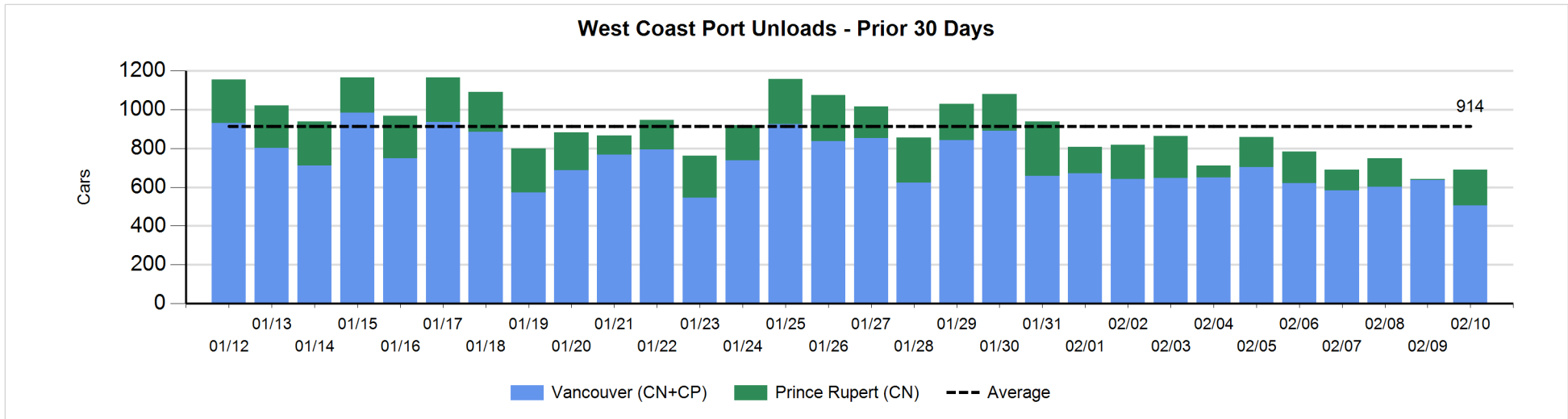
Change in Loads Not Moving 48 Hours or More - 2/10/2019

| | E Canada | Prince Rupert | Thunder Bay | USA/MEX | Vancouver | Total |
|----------------------|----------|---------------|-------------|---------|-----------|-------|
| CN | | | | | | |
| Origin | 11 | -30 | | 3 | 297 | 281 |
| Enroute | 18 | -109 | | 3 | 139 | 51 |
| Destination | 2 | 0 | | 15 | 2 | 19 |
| | 31 | -139 | | 21 | 438 | 351 |
| CP | | | | | | |
| Origin | 64 | | | 0 | -167 | -103 |
| Enroute | 11 | | | -23 | -377 | -389 |
| Destination | 41 | | 0 | 0 | 21 | 62 |
| | 116 | | 0 | -23 | -523 | -430 |
| US Rail / Short Line | | | | | | |
| Origin | | | | | | |
| Enroute | | | | 1 | | 1 |
| Destination | 25 | | | 6 | 5 | 36 |
| | 25 | | | 7 | 5 | 37 |



Port Unloads - 2/10/2019

| | Prince Rupert | Vancouver | West Coast Total | Thunder Bay | Total |
|----|---------------|-----------|------------------|-------------|-------|
| CN | 183 | 104 | 287 | | 287 |
| CP | | 402 | 402 | 6 | 408 |
| | 183 | 506 | 689 | 6 | 695 |



Port Terminal Status

Vancouver

Daily Activity for 2/10/2019

| | Cars Arrived | Cars Received in Interchange | Cars Delivered in Interchange | Cars Placed for Unloading | Loads on Wheels at Destination As of 2/10/2019 |
|-----|--------------|------------------------------|-------------------------------|---------------------------|--|
| CN | 149 | 10 | 103 | 43 | 261 |
| CP | 195 | 100 | 12 | 336 | 138 |
| SRY | 1 | 5 | | 5 | 38 |

Port Unloads

| | 02/10 | 02/09 | Week To Date | Last Week |
|-----|-------|-------|--------------|-----------|
| CN | 104 | 366 | 2,057 | 2,108 |
| CP | 402 | 269 | 2,242 | 2,863 |
| SRY | | 3 | 79 | 103 |

Age Profile of Loaded Cars Waiting Placement for Unloading

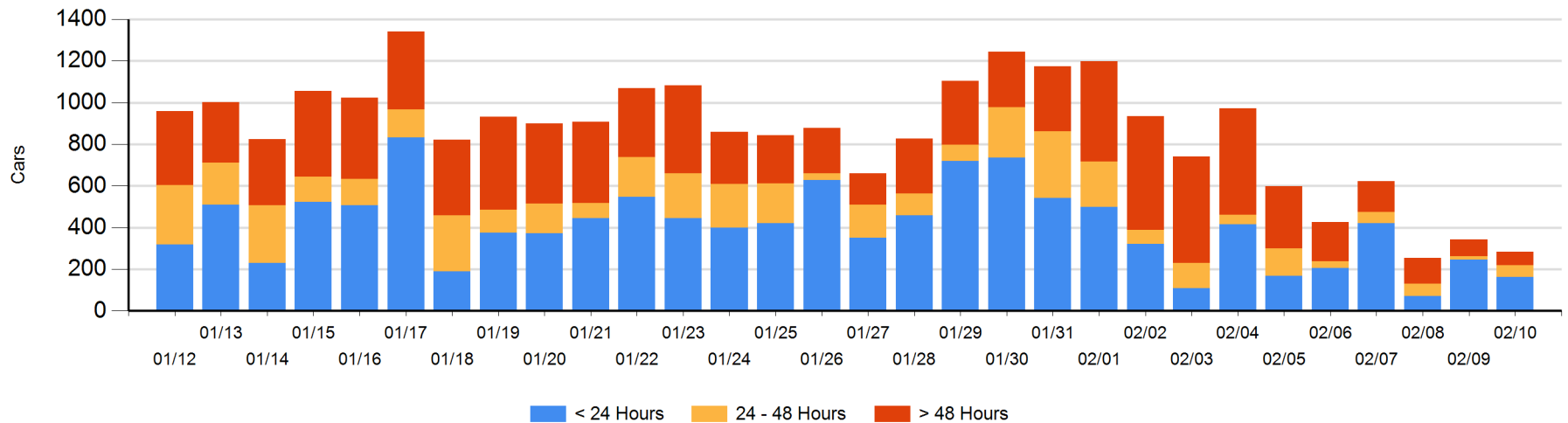
Today

| | < 24 Hrs | 24 - 48 Hrs | > 48-72 Hrs | > 72 Hrs | Total On Hand |
|-----|----------|-------------|-------------|----------|---------------|
| CN | 133 | 25 | | 24 | 182 |
| CP | 29 | 32 | 12 | 29 | 102 |
| SRY | | | | | 0 |

Change in Last 24 Hours

| | < 24 Hrs | 24-48 Hrs | 48 - 72 Hrs | > 72 Hrs |
|-----|----------|-----------|-------------|----------|
| CN | -20 | 20 | -3 | -2 |
| CP | -63 | 19 | 12 | -22 |
| SRY | | | | |

Loaded Cars on Hand Vancouver Waiting for Placement - Last 30 Days All Railways



Port Terminal Status

Prince Rupert

Daily Activity for 2/10/2019

| | Cars Arrived | Cars Received in Interchange | Cars Delivered in Interchange | Cars Placed for Unloading | Loads on Wheels at Destination As of 2/10/2019 |
|----|--------------|------------------------------|-------------------------------|---------------------------|--|
| CN | 149 | | | 149 | 262 |

Port Unloads

| | 02/10 | 02/09 | Week To Date | Last Week |
|----|-------|-------|--------------|-----------|
| CN | 183 | 7 | 825 | 1,420 |

Age Profile of Loaded Cars Waiting Placement for Unloading

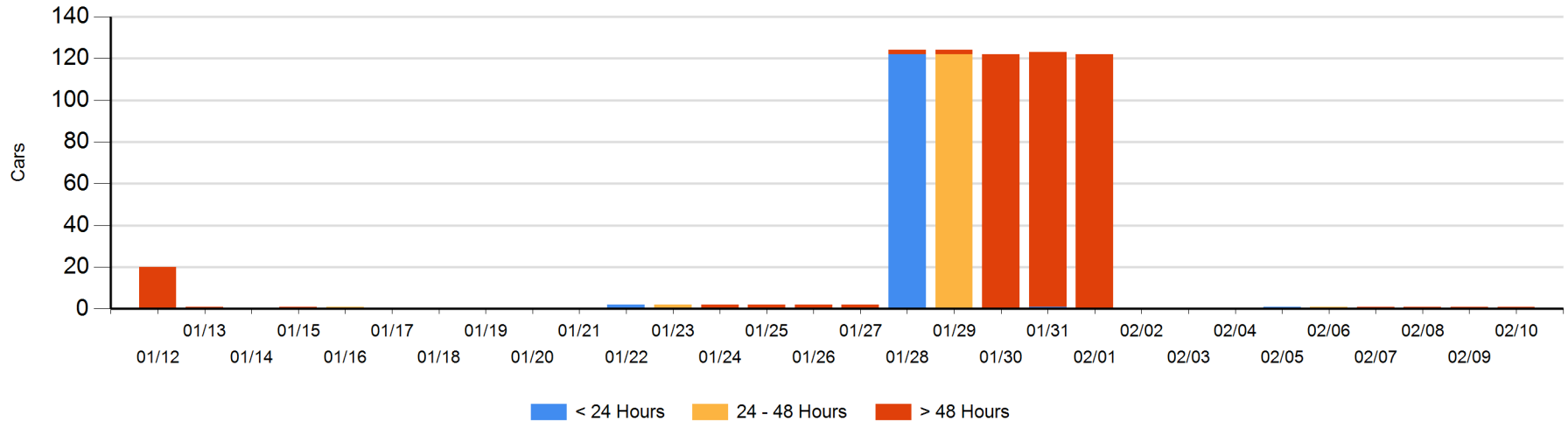
Today

| | < 24 Hrs | 24 - 48 Hrs | > 48-72 Hrs | > 72 Hrs | Total On Hand |
|----|----------|-------------|-------------|----------|---------------|
| CN | | | | 1 | 1 |

Change in Last 24 Hours

| | < 24 Hrs | 24-48 Hrs | 48 - 72 Hrs | > 72 Hrs |
|----|----------|-----------|-------------|----------|
| CN | | | | 0 |

Loaded Cars on Hand Prince Rupert Waiting for Placement - Last 30 Days All Railways



Port Terminal Status

Thunder Bay

Daily Activity for 2/10/2019

| | Cars Arrived | Cars Received in Interchange | Cars Delivered in Interchange | Cars Placed for Unloading | Loads on Wheels at Destination As of 2/10/2019 |
|----|--------------|------------------------------|-------------------------------|---------------------------|--|
| CN | | | | | 1 |
| CP | | | | | 4 |

Port Unloads

| | 02/10 | 02/09 | Week To Date | Last Week |
|----|-------|-------|--------------|-----------|
| CN | | | | 4 |
| CP | 6 | | 7 | 116 |

Age Profile of Loaded Cars Waiting Placement for Unloading

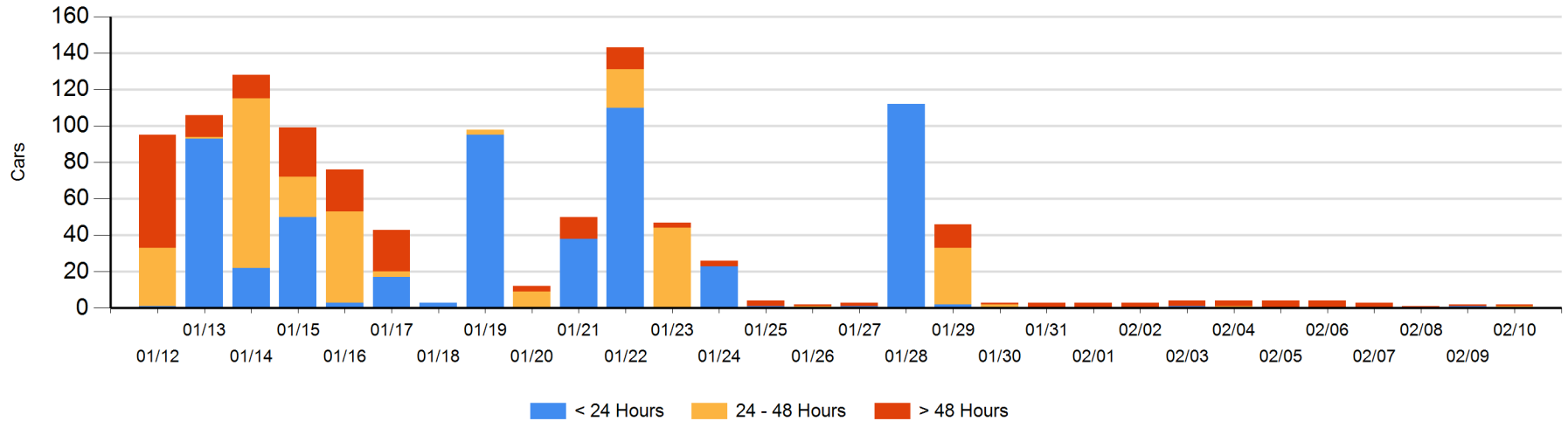
Today

| | < 24 Hrs | 24 - 48 Hrs | > 48-72 Hrs | > 72 Hrs | Total On Hand |
|----|----------|-------------|-------------|----------|---------------|
| CN | | 1 | | | 1 |
| CP | | | | 1 | 1 |

Change in Last 24 Hours

| | < 24 Hrs | 24-48 Hrs | 48 - 72 Hrs | > 72 Hrs |
|----|----------|-----------|-------------|----------|
| CN | -1 | 1 | | |
| CP | | | | 0 |

Loaded Cars on Hand Thunder Bay Waiting for Placement - Last 30 Days All Railways



Measurement Definitions

| | |
|---------------------------------|---|
| Loads on Wheels | <p>Count of loaded rail cars including all rail cars that have been released loaded at origin and have not been reported by the railway as unloaded at destination.</p> <p>Counts include all rail cars (hopper cars and boxcars) moving within a pipeline.</p> |
| Loads Not Moving | <p>Loaded rail cars for which the railways have not reported a movement event for 48 hours or more whether the rail car is at origin, enroute or at destination.</p> |
| Port Unloads | <p>Count of rail cars reported by railways as unloaded at the western port destinations of Vancouver, Prince Rupert and Thunder Bay.</p> <p>Unload counts include all rail cars (hopper cars and boxcars) unloaded by all receivers including major port terminals, transloaders and other receivers.</p> |
| Cars Arrived | <p>Count of rail cars reported as arrived at the destination railway terminal.</p> |
| Cars Received in Interchange | <p>Count of rail cars received in interchange by each railway within a destination railway terminal. Interchange activity is tracked for the Vancouver and Thunder Bay pipelines as applicable.</p> |
| Cars Delivered in Interchange | <p>Count of rail cars delivered in interchange by each railway within a destination railway terminal. Interchange activity is tracked for the Vancouver and Thunder Bay pipelines as applicable.</p> |
| Cars Placed for Unloading | <p>Count of rail cars reported by the railways as placed loaded at the receiver's facility for unloading.</p> |
| Loads on Wheels at Destination | <p>Count of rail cars that remain under load within the destination railway terminal including rail cars that have been reported as placed for unloading but not yet reported as unloaded.</p> |
| Waiting Placement for Unloading | <p>Count of rail cars that have been reported as arrived at the destination railway terminal but not reported as placed for unloading by the railway.</p> <p>For the Ports of Vancouver, Prince Rupert and Thunder Bay the count of rail cars waiting placement for unloading is categorized by age – i.e. the elapsed time from arrival at destination to the current report date.</p> |