

SPEED READ

- Loads on wheels increased overnight, reflecting a rise in both CN and CP volumes. On a net basis, volumes increased due to higher volumes across all corridors other than USA/MEX.
- Network fluidity improved overnight, led by a decline in idle car counts on both CN and CP by 6% (-136) and 9% (-226), respectively. The total count of cars for 4+ days on both railways fell 3% (-106) overnight - currently at 3,177 cars.
- Two days in Week 29 unloads now behind prior week's performance by 600 unloads, reflecting reduced unloads at Vancouver offset by improved week over week performance at Prince Rupert and Thunder Bay.

Loads on Wheels

- Loads on wheels increased 6% (+601) overnight, due to higher traffic on both CN and CP - combined total at 11,221, the highest seen in the last 30 days, and 11% above the trailing 30-day average.
- On a net basis, the rise in loads on wheels indicates higher traffic across all corridors other than USA/MEX.
- CN volumes rose 9% (+490) overnight, with higher traffic across all corridors other than Thunder Bay. System wide CN loads on wheels now at 5,978 and 15% above the trailing 30-day average.
- CP volumes increased for the fourth consecutive day, up 3% (+133) overnight, driven by a rise in traffic in the Vancouver and Thunder Bay corridors offset by a decline in volumes in the E. Canada and USA/MEX corridors. CP system wide loads on wheels currently at 5,049 and 8% above the trailing 30-day average.
- Vancouver currently at 7,615, the highest seen in the last 30 days, gained 6% (+451) overnight and have now increased for the fifth consecutive day, now 18% above the trailing 30-day average.
- The Prince Rupert pipeline now at 1,468, gained 4% (+63) overnight, and 5% below the trailing 30 day-average.
- Thunder Bay volumes increased significantly (+102) overnight - currently at 108 and 27% below the trailing 30-day average, with 98% of traffic moving on CP.

Hopper Car Rationing

- CN rationed 111 hopper cars in week 27.

Loads Not Moving

- **The count of cars not moving for 48+ hours fell 8% (-362) overnight, marking lower counts on both CN and CP. Idle car counts now at 4,407 and 54% above the trailing 30-day average.**
- CN
 - **The count of idle cars for 48+ hours decreased 6% (-136) overnight - now at 2,246 cars.**
 - The number of cars idle for 4+ days increased 11% (+165) overnight - currently at 1,640 cars, the highest seen in the last 30 days.
 - The count of cars not moving for 7+ days gained 29% (+229) overnight and have now increased for the fourth consecutive day - currently at 1,017 cars, the highest seen in the last 30 days.
 - Vancouver represents 55% of all idle cars.
 - In total 64% of all idle cars are dwelling at origin locations.
- CP
 - **CP idle car counts for 48+ hours declined 9% (-226) overnight - currently at 2,161 cars.**

- The number of cars idle for 4+ days fell 15% (-271) overnight - now at 1,537 cars.
- The number of cars idle for 7+ days increased slightly by 1% (+7) overnight - currently at 935 cars.
- Vancouver accounts for 86% of all idle cars.
- In total 81% of all idle cars are dwelling at origin locations.

Port Performance

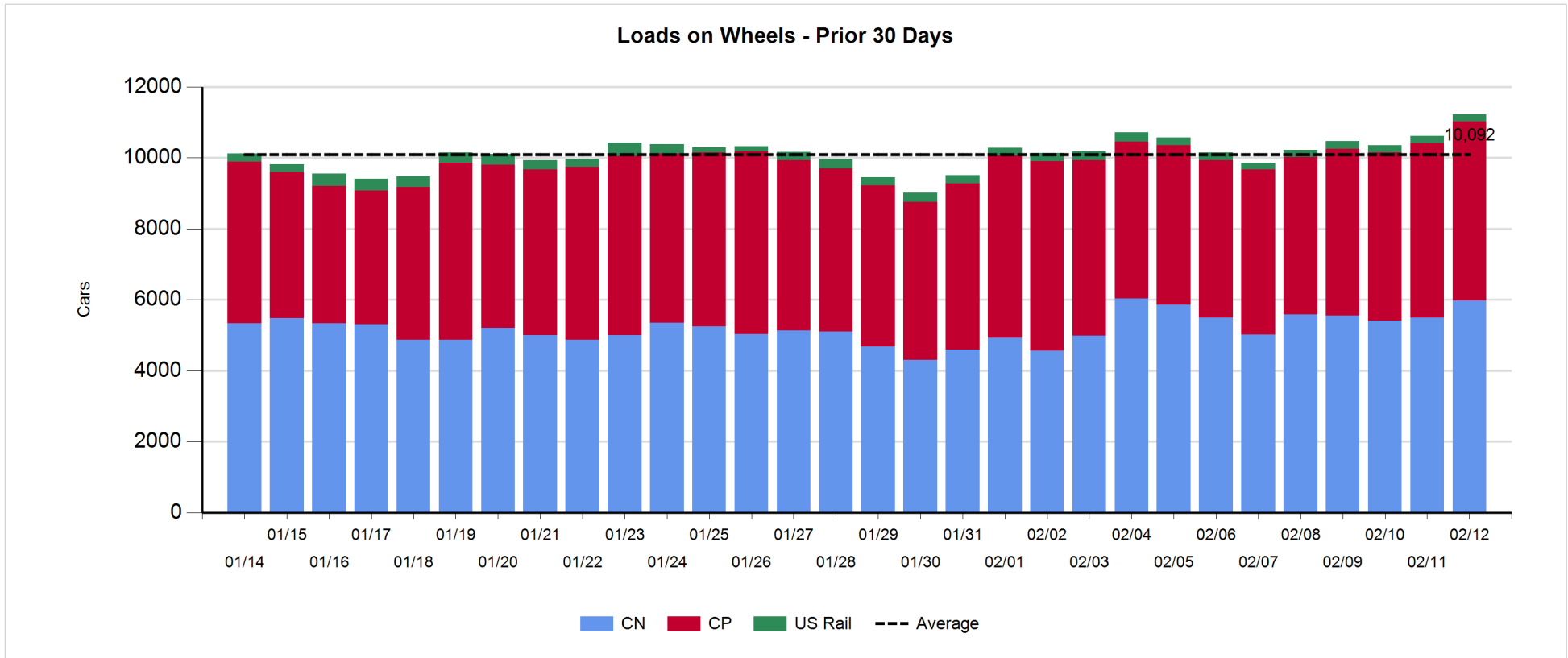
- CN and CP reported a total of 407 cars unloaded at the three major ports, the lowest seen in the last 30 days, now 55% below the trailing 30 day-average. Two days in Week 29 unloads now behind last week's pace by 600 unloads, reflecting reduced unloads at Vancouver offset by higher unloads at Prince Rupert and Thunder Bay.
- Vancouver
 - 279 unloads, the lowest seen in the last 30 days, was reported by CN and CP at the Port of Vancouver; CN - 239 and CP - 40. Two days in Week 29 unloads are tracking behind last week's performance by more than 750 unloads.
 - There are more than 500 cars on site at Vancouver with more than 300 cars arriving at the port in the last 24 hours.
 - CN and CP have 1,000 cars in British Columbia en route to Vancouver, with more than 350 cars at Kamloops and west, and 83% of traffic moving on CP.
- Prince Rupert
 - Prince Rupert reported 127 unloads, now ahead of last week's unloads after two days by more than 150 unloads.
 - Loads on wheels now above 1,000 cars - currently at 1,468 cars.
 - There are more than 250 cars west of Jasper en route to Prince Rupert.
 - There are less than 200 cars on site at Prince Rupert with 200 cars arriving at the port in the last 24 hours.
- Thunder Bay
 - 1 unload was reported at Thunder Bay yesterday. Two days in Week 29 unloads are tracking ahead of last week's pace by 1 unload.
 - There are 5 cars on site at Thunder Bay with zero cars arriving at the port in the prior 24 hours.
 - There are 1 car en route to Thunder Bay from Winnipeg and east.

Daily Loads on Wheels - 2/12/2019

| | E Canada | Prince Rupert | Thunder Bay | USA/MEX | Vancouver | Total |
|------------|----------|---------------|-------------|---------|-----------|--------|
| CN | 883 | 1,468 | 2 | 147 | 3,478 | 5,978 |
| CP | 575 | | 106 | 277 | 4,091 | 5,049 |
| Short Line | 50 | | | | 46 | 96 |
| US Rail | | | | 98 | | 98 |
| | 1,508 | 1,468 | 108 | 522 | 7,615 | 11,221 |

Change in Loads on Wheels - Prior 24 Hours

| | E Canada | Prince Rupert | Thunder Bay | USA/MEX | Vancouver | Total |
|------------|----------|---------------|-------------|---------|-----------|-------|
| CN | 57 | 63 | 0 | 21 | 349 | 490 |
| CP | -38 | | 102 | -35 | 104 | 133 |
| Short Line | -7 | | | | -2 | -9 |
| US Rail | | | | -13 | | -13 |
| | 12 | 63 | 102 | -27 | 451 | 601 |

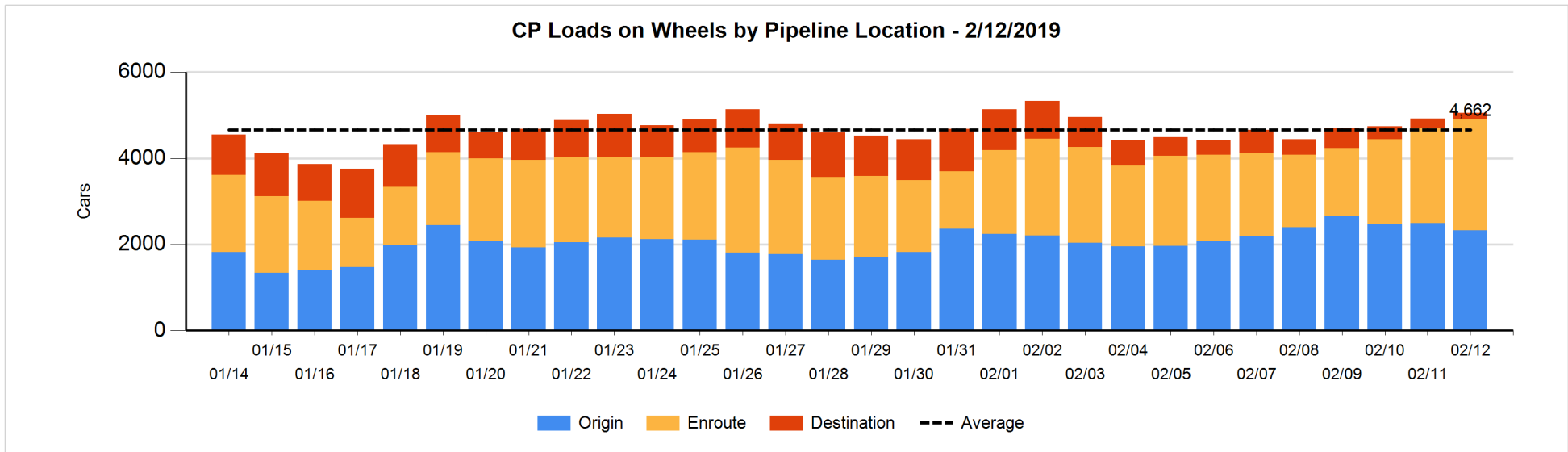
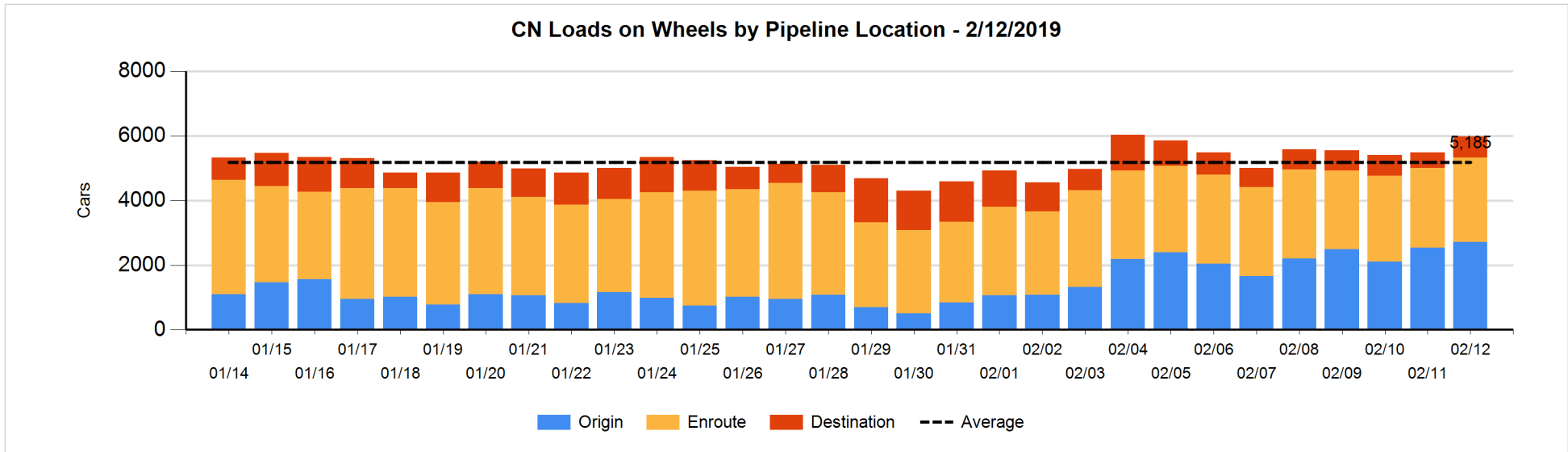


Daily Loads on Wheels By Pipeline Location - 2/12/2019

| | E Canada | Prince Rupert | Thunder Bay | USA/MEX | Vancouver | Total |
|----------------------|----------|---------------|-------------|---------|-----------|-------|
| CN | | | | | | |
| Origin | 180 | 547 | | 41 | 1,946 | 2,714 |
| Enroute | 606 | 733 | 1 | 94 | 1,186 | 2,620 |
| Destination | 97 | 188 | 1 | 12 | 346 | 644 |
| | 883 | 1,468 | 2 | 147 | 3,478 | 5,978 |
| CP | | | | | | |
| Origin | 187 | | 102 | 45 | 1,994 | 2,328 |
| Enroute | 387 | | | 216 | 1,972 | 2,575 |
| Destination | 1 | | 4 | 16 | 125 | 146 |
| | 575 | | 106 | 277 | 4,091 | 5,049 |
| US Rail / Short Line | | | | | | |
| Origin | | | | | | |
| Enroute | | | | 62 | | 62 |
| Destination | 50 | | | 36 | 46 | 132 |
| | 50 | | | 98 | 46 | 194 |

Change in Daily Loads on Wheels By Pipeline Location - Prior 24 Hours

| | E Canada | Prince Rupert | Thunder Bay | USA/MEX | Vancouver | Total |
|----------------------|----------|---------------|-------------|---------|-----------|-------|
| CN | | | | | | |
| Origin | 13 | -25 | | -23 | 203 | 168 |
| Enroute | 23 | 11 | 0 | 46 | 73 | 153 |
| Destination | 21 | 77 | 0 | -2 | 73 | 169 |
| | 57 | 63 | 0 | 21 | 349 | 490 |
| CP | | | | | | |
| Origin | -1 | | 102 | -90 | -176 | -165 |
| Enroute | 1 | | | 60 | 314 | 375 |
| Destination | -38 | | 0 | -5 | -34 | -77 |
| | -38 | | 102 | -35 | 104 | 133 |
| US Rail / Short Line | | | | | | |
| Origin | | | | | | |
| Enroute | | | | -4 | | -4 |
| Destination | -7 | | | -9 | -2 | -18 |
| | -7 | | | -13 | -2 | -22 |

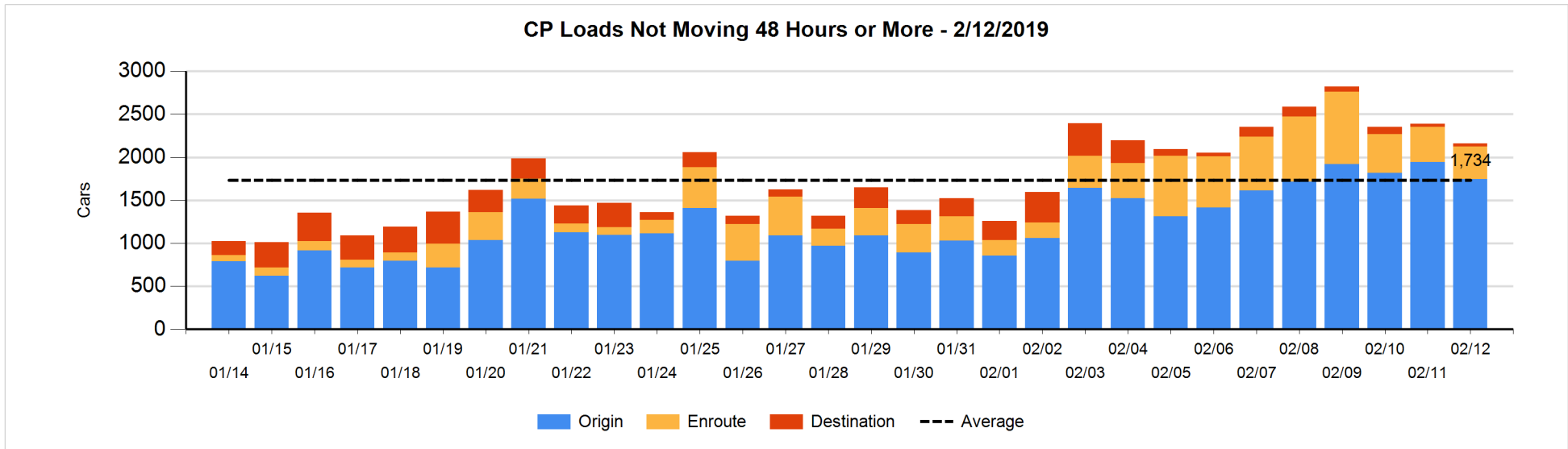
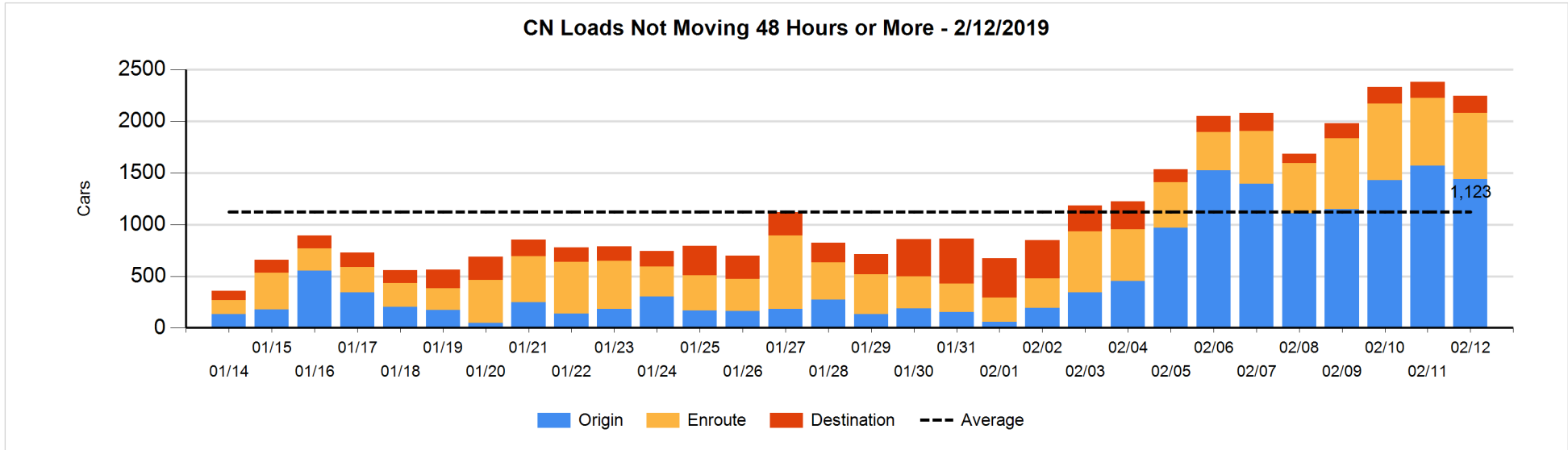


Loads Not Moving 48 Hours or More - 2/12/2019

| | E Canada | Prince Rupert | Thunder Bay | USA/MEX | Vancouver | Total |
|-----------------------------|----------|---------------|-------------|---------|-----------|-------|
| CN | | | | | | |
| Origin | 151 | 314 | | 20 | 957 | 1442 |
| Enroute | 205 | 196 | | 23 | 215 | 639 |
| Destination | 18 | 79 | 1 | 1 | 66 | 165 |
| | 374 | 589 | 1 | 44 | 1238 | 2246 |
| CP | | | | | | |
| Origin | 167 | | | 5 | 1573 | 1745 |
| Enroute | 41 | | | 68 | 272 | 381 |
| Destination | 1 | | 4 | 11 | 19 | 35 |
| | 209 | | 4 | 84 | 1864 | 2161 |
| US Rail / Short Line | | | | | | |
| Origin | | | | | | |
| Enroute | | | | 16 | | 16 |
| Destination | 21 | | | 23 | 26 | 70 |
| | 21 | | | 39 | 26 | 86 |

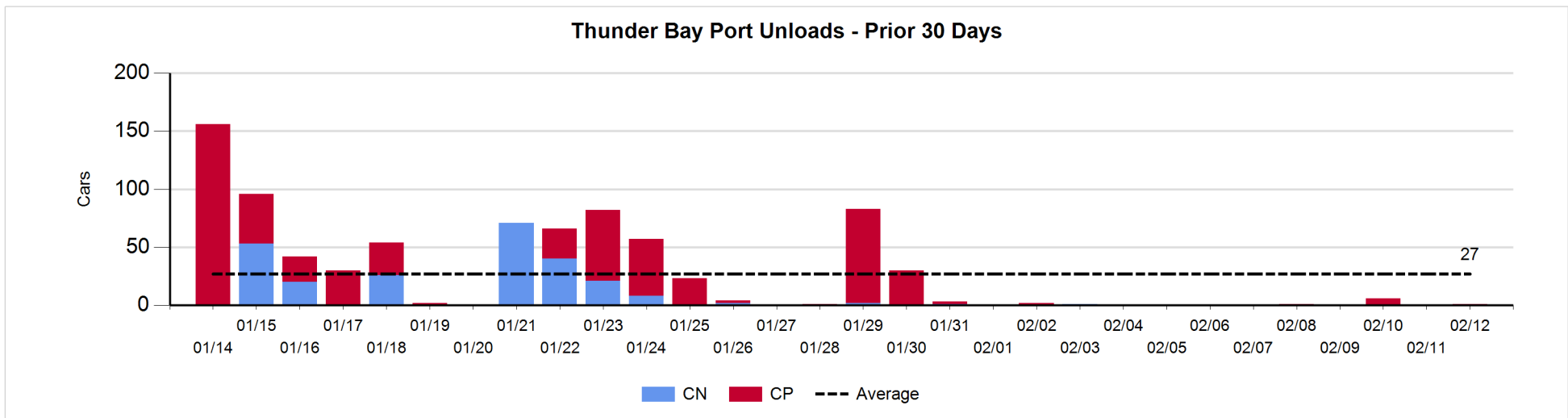
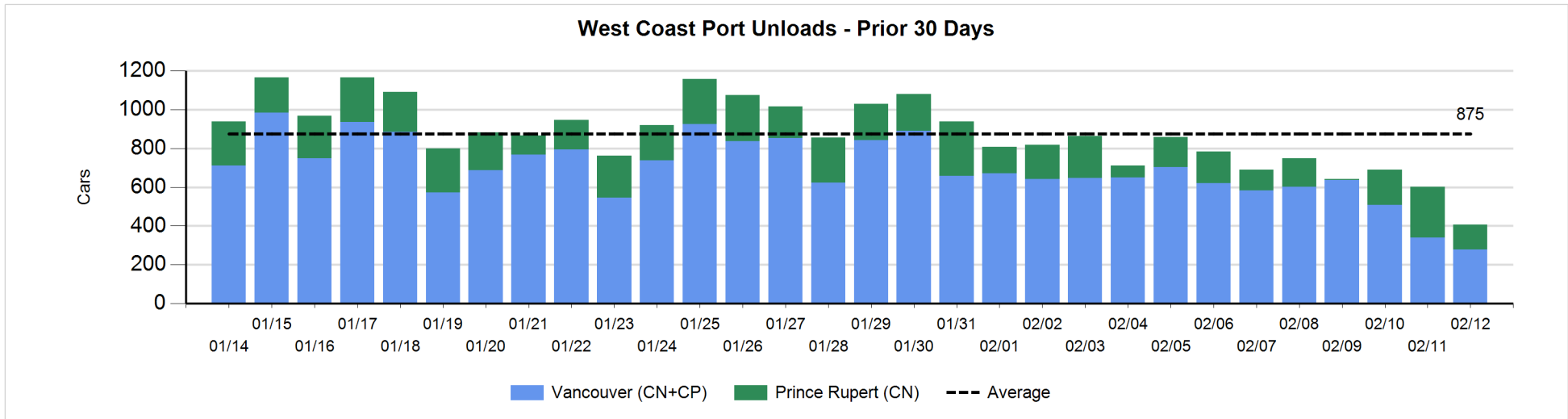
Change in Loads Not Moving 48 Hours or More - 2/12/2019

| | E Canada | Prince Rupert | Thunder Bay | USA/MEX | Vancouver | Total |
|-----------------------------|----------|---------------|-------------|---------|-----------|-------|
| CN | | | | | | |
| Origin | 0 | -146 | | -30 | 50 | -126 |
| Enroute | -36 | -5 | | -2 | 22 | -21 |
| Destination | -22 | 67 | 0 | -6 | -28 | 11 |
| | -58 | -84 | 0 | -38 | 44 | -136 |
| CP | | | | | | |
| Origin | -1 | | | -2 | -197 | -200 |
| Enroute | 7 | | | -41 | 8 | -26 |
| Destination | 1 | | 0 | -3 | 2 | 0 |
| | 7 | | 0 | -46 | -187 | -226 |
| US Rail / Short Line | | | | | | |
| Origin | | | | | | |
| Enroute | | | | -4 | | -4 |
| Destination | -7 | | | -5 | -1 | -13 |
| | -7 | | | -9 | -1 | -17 |



Port Unloads - 2/12/2019

| | Prince Rupert | Vancouver | West Coast Total | Thunder Bay | Total |
|----|---------------|-----------|------------------|-------------|-------|
| CN | 127 | 239 | 366 | | 366 |
| CP | | 40 | 40 | 1 | 41 |
| | 127 | 279 | 406 | 1 | 407 |



Port Terminal Status

Vancouver

Daily Activity for 2/12/2019

| | Cars Arrived | Cars Received in Interchange | Cars Delivered in Interchange | Cars Placed for Unloading | Loads on Wheels at Destination As of 2/12/2019 |
|-----|--------------|------------------------------|-------------------------------|---------------------------|--|
| CN | 112 | 204 | | 291 | 346 |
| CP | 207 | | 205 | 96 | 125 |
| SRY | | 1 | | 2 | 46 |

Port Unloads

| | 02/12 | 02/11 | Week To Date | Last Week |
|-----|-------|-------|--------------|-----------|
| CN | 239 | 259 | 498 | 2,057 |
| CP | 40 | 81 | 121 | 2,243 |
| SRY | 3 | 7 | 10 | 79 |

Age Profile of Loaded Cars Waiting Placement for Unloading

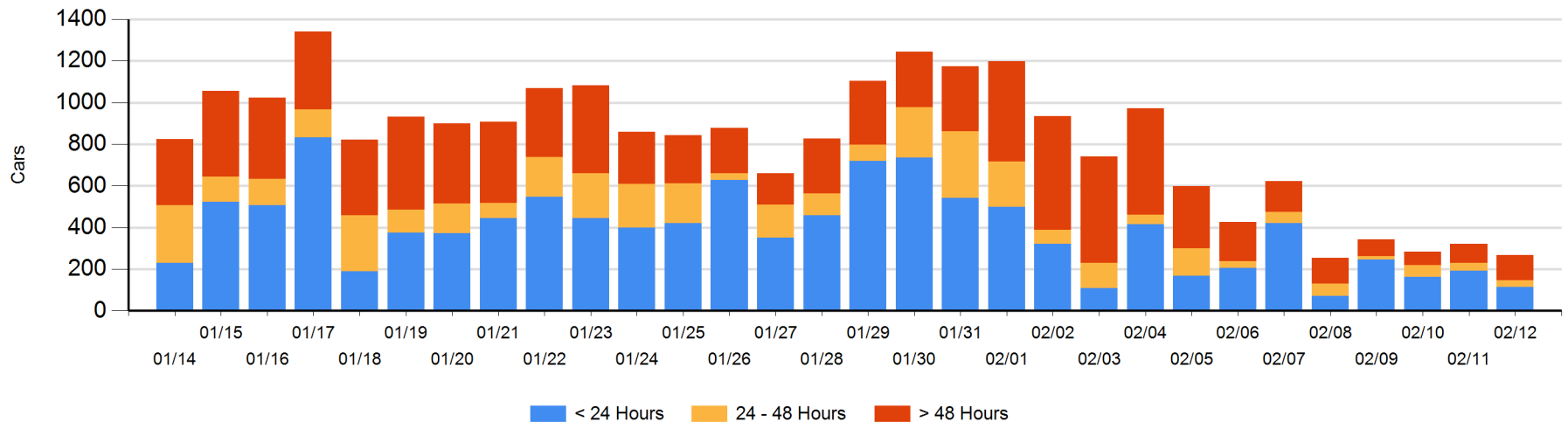
Today

| | < 24 Hrs | 24 - 48 Hrs | > 48-72 Hrs | > 72 Hrs | Total On Hand |
|-----|----------|-------------|-------------|----------|---------------|
| CN | | 27 | 35 | 44 | 106 |
| CP | 113 | 7 | | 41 | 161 |
| SRY | | | | | 0 |

Change in Last 24 Hours

| | < 24 Hrs | 24-48 Hrs | 48 - 72 Hrs | > 72 Hrs |
|-----|----------|-----------|-------------|----------|
| CN | -107 | -13 | 12 | 23 |
| CP | 29 | 7 | -6 | 1 |
| SRY | | | | |

Loaded Cars on Hand Vancouver Waiting for Placement - Last 30 Days All Railways



Port Terminal Status

Prince Rupert

Daily Activity for 2/12/2019

| | Cars Arrived | Cars Received in Interchange | Cars Delivered in Interchange | Cars Placed for Unloading | Loads on Wheels at Destination As of 2/12/2019 |
|----|--------------|------------------------------|-------------------------------|---------------------------|--|
| CN | 204 | | | 204 | 188 |

Port Unloads

| | 02/12 | 02/11 | Week To Date | Last Week |
|----|-------|-------|--------------|-----------|
| CN | 127 | 261 | 388 | 825 |

Age Profile of Loaded Cars Waiting Placement for Unloading

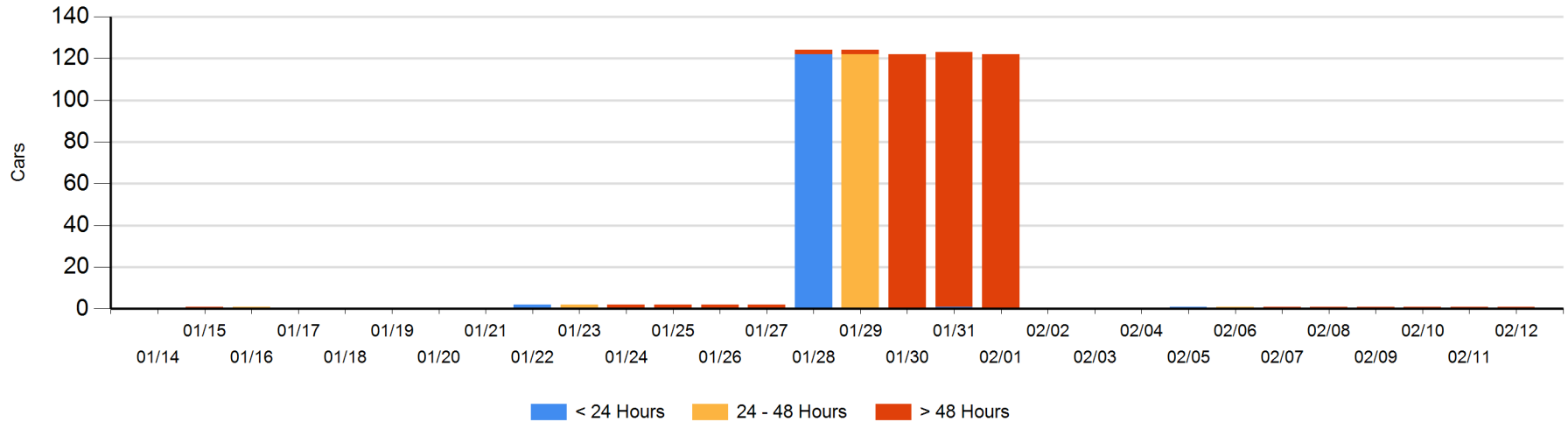
Today

| | < 24 Hrs | 24 - 48 Hrs | > 48-72 Hrs | > 72 Hrs | Total On Hand |
|----|----------|-------------|-------------|----------|---------------|
| CN | | | | 1 | 1 |

Change in Last 24 Hours

| | < 24 Hrs | 24-48 Hrs | 48 - 72 Hrs | > 72 Hrs |
|----|----------|-----------|-------------|----------|
| CN | | | | 0 |

Loaded Cars on Hand Prince Rupert Waiting for Placement - Last 30 Days All Railways



Port Terminal Status

Thunder Bay

Daily Activity for 2/12/2019

| | Cars Arrived | Cars Received in Interchange | Cars Delivered in Interchange | Cars Placed for Unloading | Loads on Wheels at Destination As of 2/12/2019 |
|----|--------------|------------------------------|-------------------------------|---------------------------|--|
| CN | | | | | 1 |
| CP | | | | | 4 |

Port Unloads

| | 02/12 | 02/11 | Week To Date | Last Week |
|----|-------|-------|--------------|-----------|
| CN | | | | |
| CP | 1 | | 1 | 7 |

Age Profile of Loaded Cars Waiting Placement for Unloading

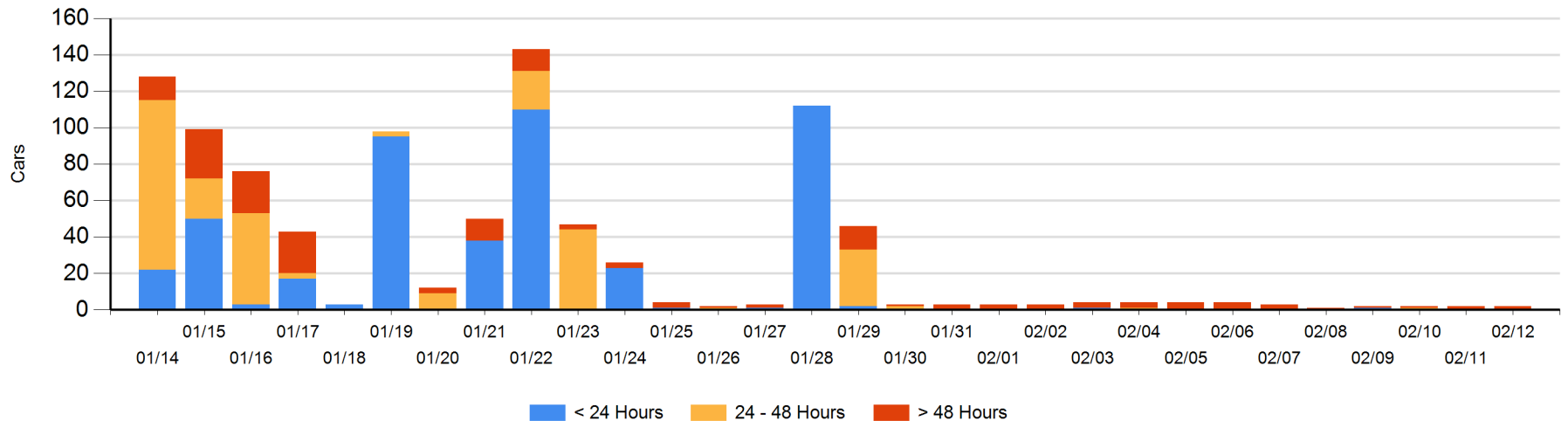
Today

| | < 24 Hrs | 24 - 48 Hrs | > 48-72 Hrs | > 72 Hrs | Total On Hand |
|----|----------|-------------|-------------|----------|---------------|
| CN | | | | 1 | 1 |
| CP | | | | 1 | 1 |

Change in Last 24 Hours

| | < 24 Hrs | 24-48 Hrs | 48 - 72 Hrs | > 72 Hrs |
|----|----------|-----------|-------------|----------|
| CN | | | -1 | 1 |
| CP | | | | 0 |

Loaded Cars on Hand Thunder Bay Waiting for Placement - Last 30 Days All Railways



Measurement Definitions

| | |
|---------------------------------|---|
| Loads on Wheels | <p>Count of loaded rail cars including all rail cars that have been released loaded at origin and have not been reported by the railway as unloaded at destination.</p> <p>Counts include all rail cars (hopper cars and boxcars) moving within a pipeline.</p> |
| Loads Not Moving | <p>Loaded rail cars for which the railways have not reported a movement event for 48 hours or more whether the rail car is at origin, enroute or at destination.</p> |
| Port Unloads | <p>Count of rail cars reported by railways as unloaded at the western port destinations of Vancouver, Prince Rupert and Thunder Bay.</p> <p>Unload counts include all rail cars (hopper cars and boxcars) unloaded by all receivers including major port terminals, transloaders and other receivers.</p> |
| Cars Arrived | <p>Count of rail cars reported as arrived at the destination railway terminal.</p> |
| Cars Received in Interchange | <p>Count of rail cars received in interchange by each railway within a destination railway terminal. Interchange activity is tracked for the Vancouver and Thunder Bay pipelines as applicable.</p> |
| Cars Delivered in Interchange | <p>Count of rail cars delivered in interchange by each railway within a destination railway terminal. Interchange activity is tracked for the Vancouver and Thunder Bay pipelines as applicable.</p> |
| Cars Placed for Unloading | <p>Count of rail cars reported by the railways as placed loaded at the receiver's facility for unloading.</p> |
| Loads on Wheels at Destination | <p>Count of rail cars that remain under load within the destination railway terminal including rail cars that have been reported as placed for unloading but not yet reported as unloaded.</p> |
| Waiting Placement for Unloading | <p>Count of rail cars that have been reported as arrived at the destination railway terminal but not reported as placed for unloading by the railway.</p> <p>For the Ports of Vancouver, Prince Rupert and Thunder Bay the count of rail cars waiting placement for unloading is categorized by age – i.e. the elapsed time from arrival at destination to the current report date.</p> |