

SPEED READ

- Loads on wheels increased overnight, marking higher CP volumes offset by a decline in CN volumes. On a net basis, volumes increased due to higher traffic in the Vancouver and E. Canada corridors offset by reduced volumes in the Prince Rupert and USA/MEX corridors.
- Network fluidity improved overnight, led by a decline in idle car counts on CP by 37% (-760) offset by a rise in idle car counts on CN by 2% (+46). The total count of cars for 4+ days on both railways fell 11% (-348) overnight - presently at 2,719 cars.
- Three days in Week 29 unloads now behind prior week's performance by more than 850 unloads, reflecting reduced unloads at Vancouver offset by improved week over week performance at Prince Rupert and Thunder Bay.

Loads on Wheels

- Loads on wheels increased for the third consecutive day, up 4% (+489) overnight, due to higher volumes on CP offset by reduced volumes on CN - combined total at 11,728, the highest seen in the last 30 days, and 16% above the trailing 30-day average.
- On a net basis, the increase in loads on wheels indicates higher volumes in the Vancouver and E. Canada corridors offset by reduced volumes in the Prince Rupert and USA/MEX corridors.
- CN volumes declined slightly by 1% (-50) overnight, with reduced volumes in the Prince Rupert corridor offset by higher traffic in the E. Canada and Vancouver corridors. System wide CN loads on wheels now at 5,943 and 14% above the trailing 30-day average.
- CP volumes increased for the fifth consecutive day, up 9% (+437) overnight, driven by an increase in volumes in the Vancouver and E. Canada corridors offset by a decline in volumes in the USA/MEX corridor. CP system wide loads on wheels now at 5,489, the highest seen in the last 30 days, and 17% above the trailing 30-day average.
- Vancouver presently at 8,001, the highest seen in the last 30 days, increased 5% (+383) overnight and have now increased for the sixth consecutive day, now 23% above the trailing 30-day average.
- The Prince Rupert pipeline presently at 1,371, declined 8% (-112) overnight, and 12% below the trailing 30 day-average.
- Thunder Bay volumes remained unchanged (0) overnight - presently at 108 and 21% below the trailing 30-day average, with 98% of traffic moving on CP.

Hopper Car Rationing

- CN rationed 111 hopper cars in week 27.

Loads Not Moving

- **The count of cars not moving for 48+ hours fell 17% (-714) overnight, reflecting reduced counts on CP offset by higher counts on CN. Idle car counts now at 3,583 and 22% above the trailing 30-day average.**
- CN
 - **The count of idle cars for 48+ hours rose 2% (+46) overnight - now at 2,292 cars.**
 - The number of cars idle for 4+ days decreased slightly (-1) overnight - now at 1,639 cars.
 - The count of cars not moving for 7+ days declined 8% (-82) overnight - currently at 935 cars.
 - Vancouver represents 54% of all idle cars.
 - In total 63% of all idle cars are dwelling at origin locations.
- CP
 - **CP idle car counts for 48+ hours declined 37% (-760) overnight - presently at 1,291 cars.**
 - The number of cars idle for 4+ days fell 24% (-347) overnight - now at 1,080 cars.

- The number of cars idle for 7+ days declined for the fourth consecutive day, down 21% (-170) overnight - now at 657 cars.
- Vancouver accounts for 89% of all idle cars.
- In total 75% of all idle cars are dwelling at origin locations.

Port Performance

- CN and CP reported a total of 511 cars unloaded at the three major ports, now 42% below the trailing 30 day-average. Three days in Week 29 unloads now behind last week's pace by more than 850 unloads, reflecting reduced unloads at Vancouver offset by higher unloads at Prince Rupert and Thunder Bay.
- Vancouver
 - 300 unloads reported by CN and CP at the Port of Vancouver; CN - 111 and CP - 189. Three days in Week 29 unloads are tracking behind last week's performance by 1,100 unloads.
 - There are 800 cars on site at Vancouver with 600 cars arriving at the port in the last 24 hours.
 - CN and CP have about 1,750 cars in British Columbia en route to Vancouver, with more than 500 cars at Kamloops and west, and 60% of traffic moving on CP.
- Prince Rupert
 - Prince Rupert reported 211 unloads, now ahead of last week's unloads after three days by more than 200 unloads.
 - Loads on wheels now above 1,000 cars - now at 1,371 cars.
 - There are more than 100 cars west of Jasper en route to Prince Rupert.
 - There are more than 100 cars on site at Prince Rupert with 150 cars arriving at the port in the last 24 hours.
- Thunder Bay
 - Zero unloads were reported at Thunder Bay yesterday. Three days in Week 29 unloads are tracking ahead of last week's pace by 1 unload.
 - There are 5 cars on site at Thunder Bay with zero cars arriving at the port in the prior 24 hours.
 - There are 1 car en route to Thunder Bay from Winnipeg and east.

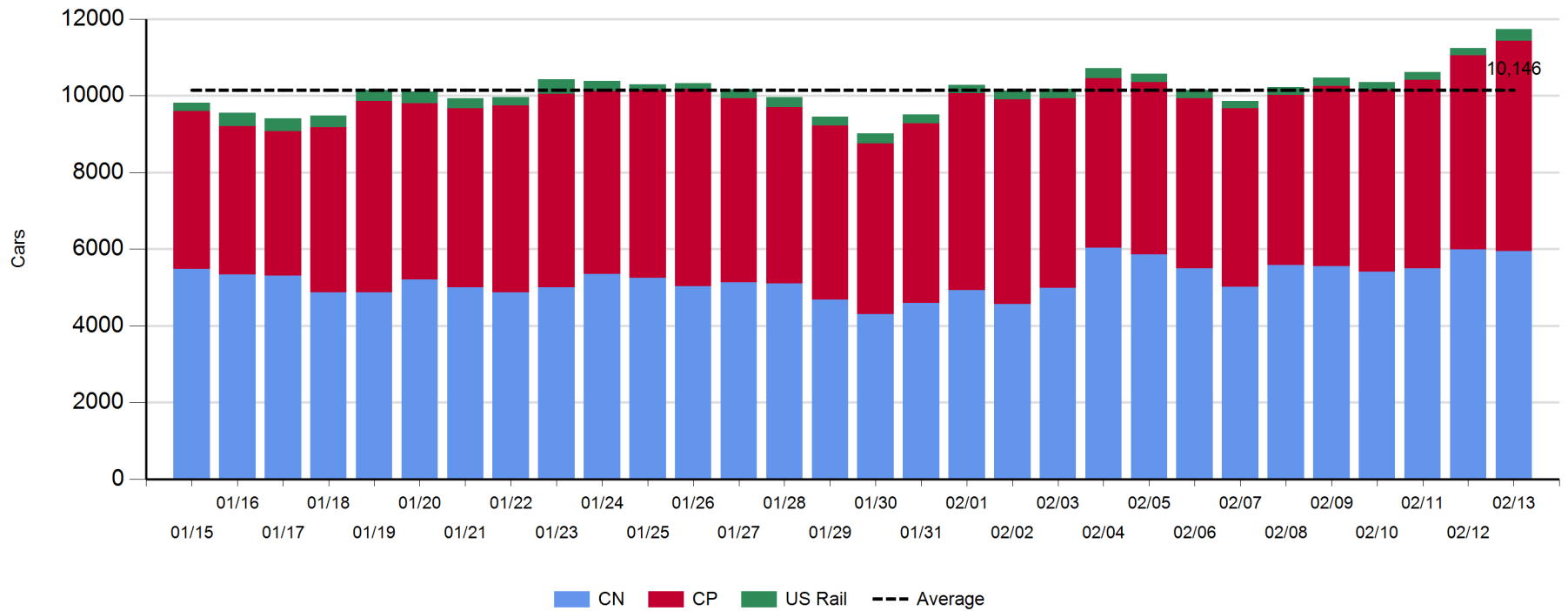
Daily Loads on Wheels - 2/13/2019

	E Canada	Prince Rupert	Thunder Bay	USA/MEX	Vancouver	Total
CN	929	1,371	2	147	3,494	5,943
CP	679		106	237	4,467	5,489
Short Line	154				40	194
US Rail				102		102
	1,762	1,371	108	486	8,001	11,728

Change in Loads on Wheels - Prior 24 Hours

	E Canada	Prince Rupert	Thunder Bay	USA/MEX	Vancouver	Total
CN	46	-112	0	0	16	-50
CP	104		0	-40	373	437
Short Line	104				-6	98
US Rail				4		4
	254	-112	0	-36	383	489

Loads on Wheels - Prior 30 Days

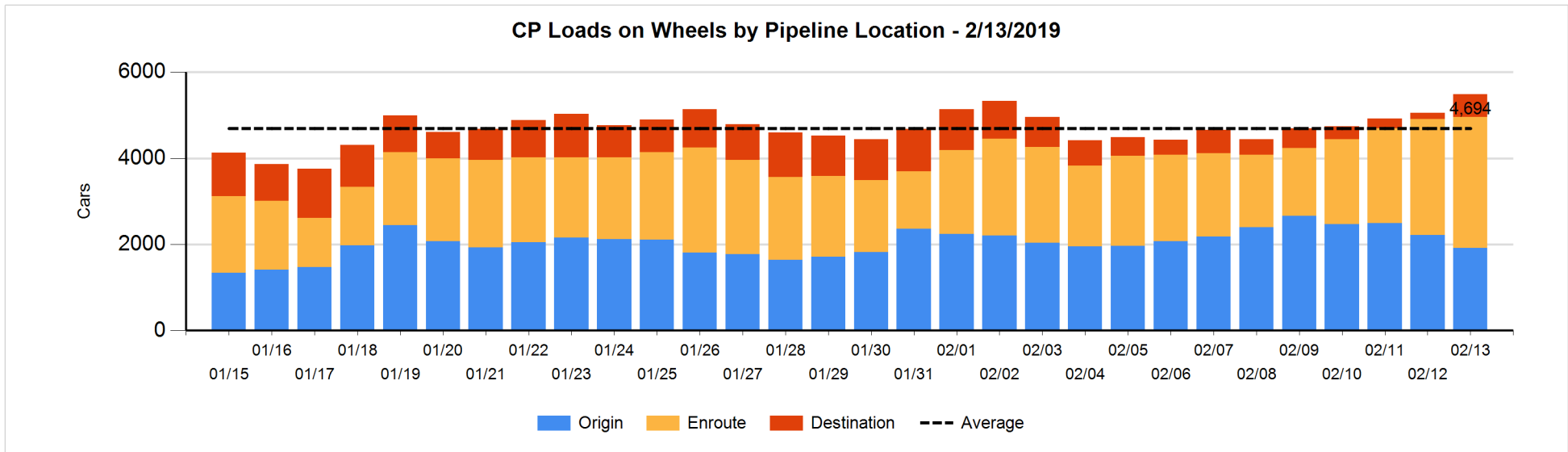
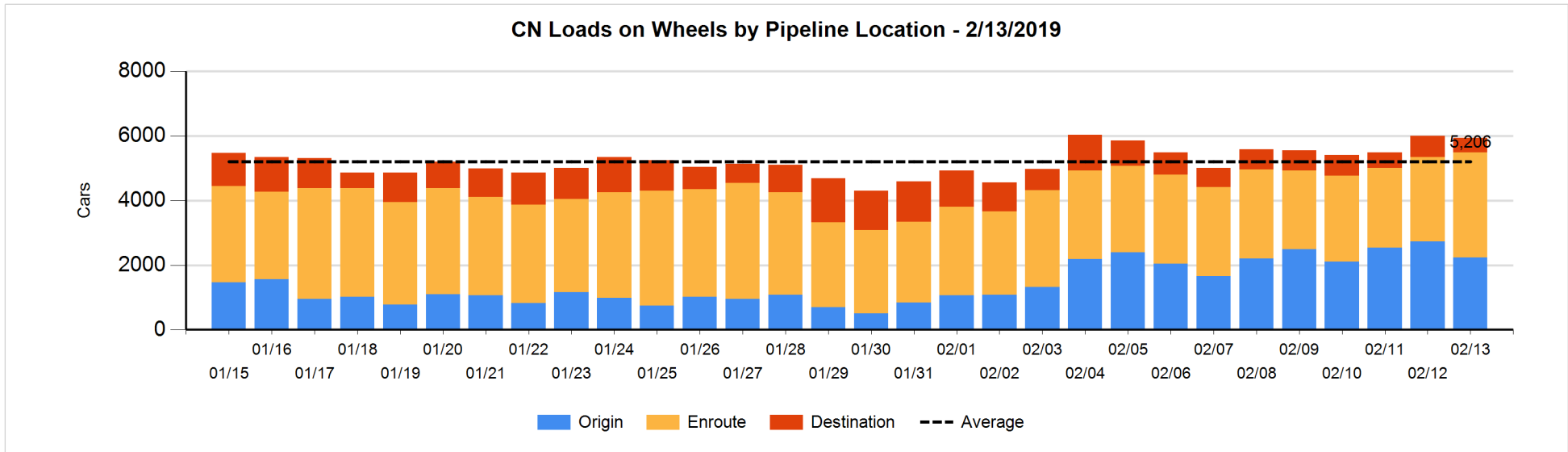


Daily Loads on Wheels By Pipeline Location - 2/13/2019

	E Canada	Prince Rupert	Thunder Bay	USA/MEX	Vancouver	Total
CN						
Origin	166	647		29	1,396	2,238
Enroute	678	606	1	100	1,859	3,244
Destination	85	118	1	18	239	461
	929	1,371	2	147	3,494	5,943
CP						
Origin	238			40	1,637	1,915
Enroute	439		102	197	2,309	3,047
Destination	2		4		521	527
	679		106	237	4,467	5,489
US Rail / Short Line						
Origin						
Enroute	112			53		165
Destination	42			49	40	131
	154			102	40	296

Change in Daily Loads on Wheels By Pipeline Location - Prior 24 Hours

	E Canada	Prince Rupert	Thunder Bay	USA/MEX	Vancouver	Total
CN						
Origin	-14	85		-12	-550	-491
Enroute	72	-127	0	6	673	624
Destination	-12	-70	0	6	-107	-183
	46	-112	0	0	16	-50
CP						
Origin	51		-102	-1	-247	-299
Enroute	52		102	-23	224	355
Destination	1		0	-16	396	381
	104		0	-40	373	437
US Rail / Short Line						
Origin						
Enroute	112			-9		103
Destination	-8			13	-6	-1
	104			4	-6	102

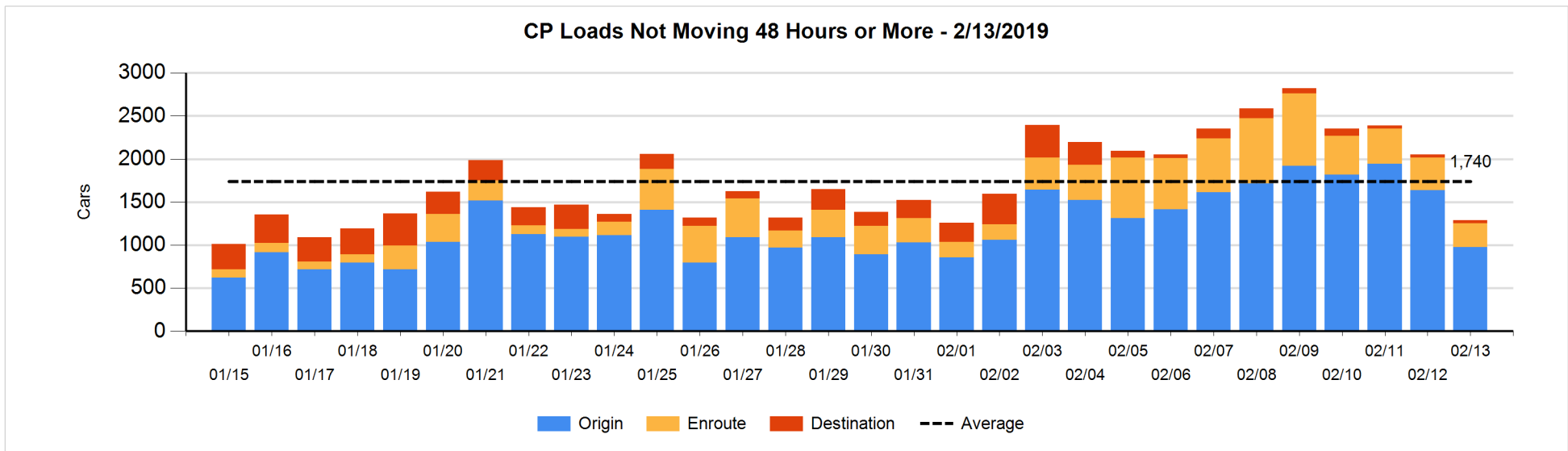
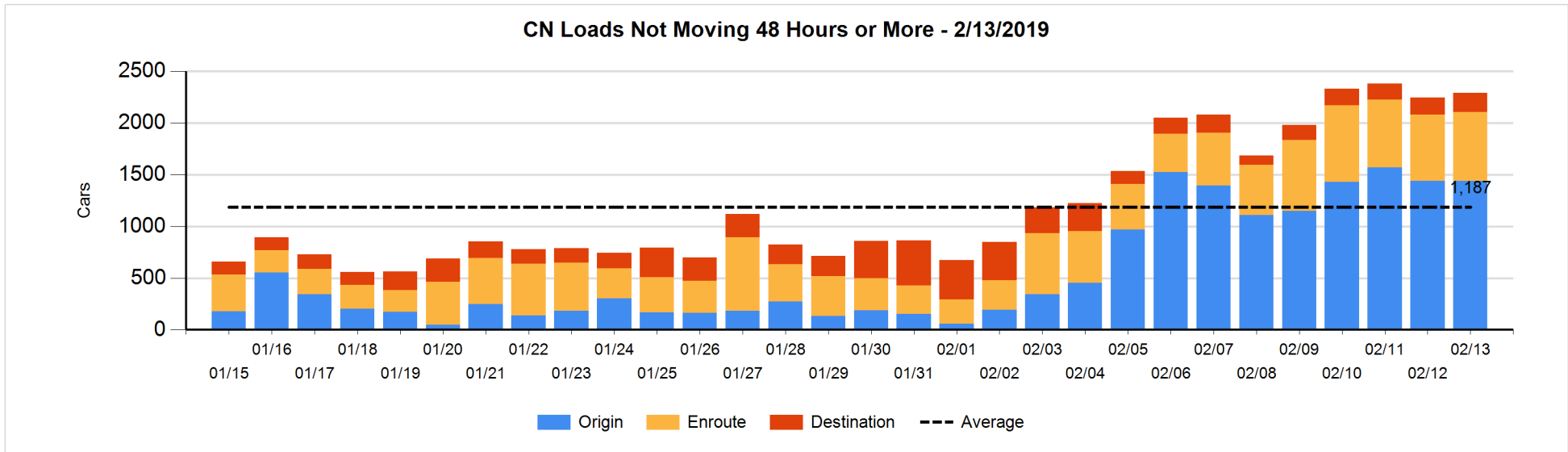


Loads Not Moving 48 Hours or More - 2/13/2019

	E Canada	Prince Rupert	Thunder Bay	USA/MEX	Vancouver	Total
CN						
Origin	50	343		24	1022	1439
Enroute	204	283		23	157	667
Destination	41	78	1	4	62	186
	295	704	1	51	1241	2292
CP						
Origin	22			31	921	974
Enroute	19			68	189	276
Destination	1		4		36	41
	42		4	99	1146	1291
US Rail / Short Line						
Origin						
Enroute				20		20
Destination	35			20	37	92
	35			40	37	112

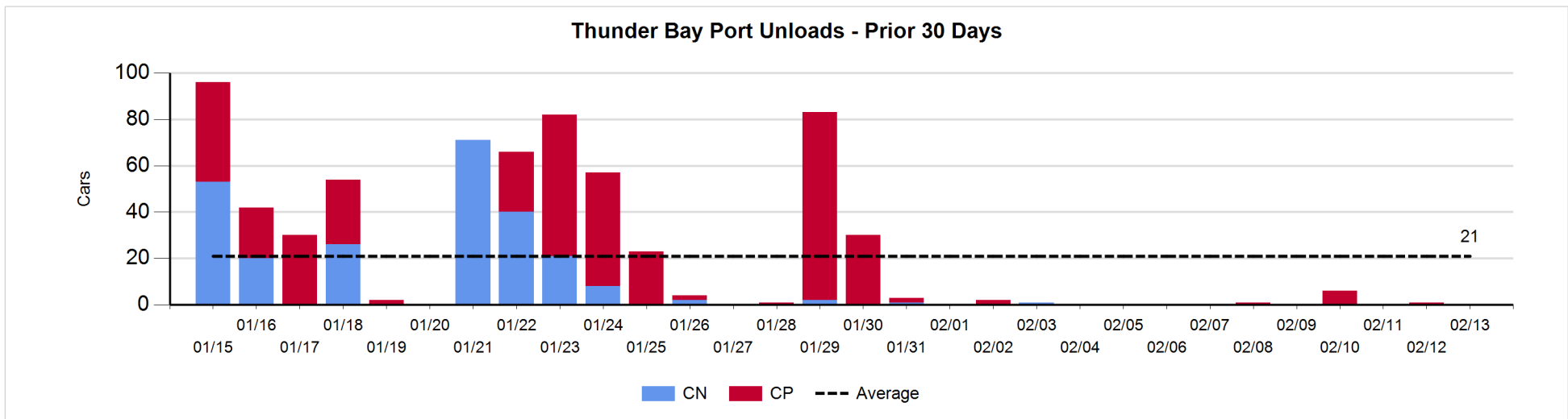
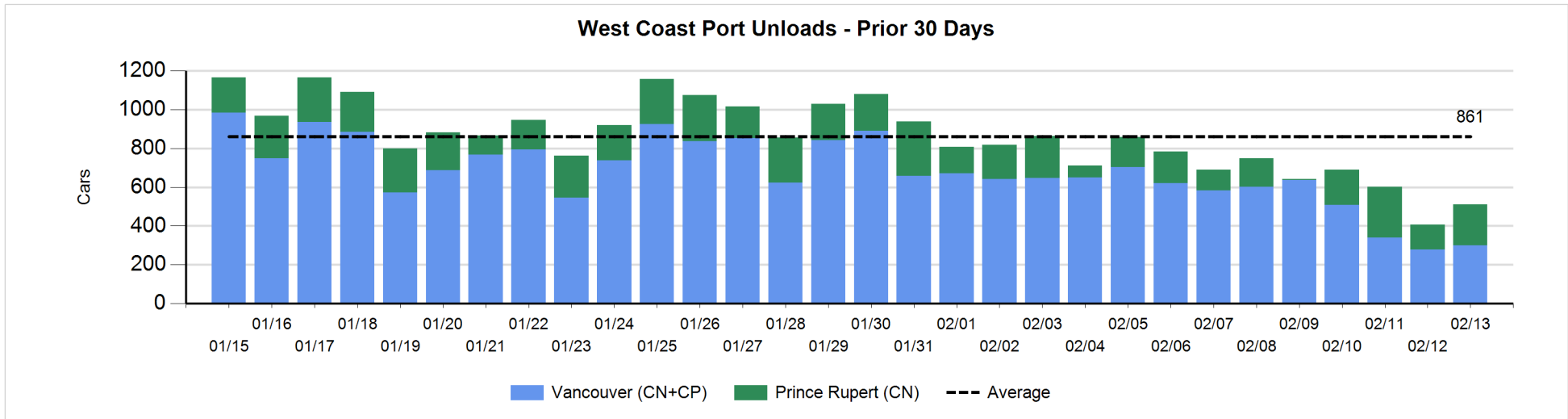
Change in Loads Not Moving 48 Hours or More - 2/13/2019

	E Canada	Prince Rupert	Thunder Bay	USA/MEX	Vancouver	Total
CN						
Origin	-101	29		4	65	-3
Enroute	-1	87		0	-58	28
Destination	23	-1	0	3	-4	21
	-79	115	0	7	3	46
CP						
Origin	-145			28	-544	-661
Enroute	-22			0	-83	-105
Destination	0		0	-11	17	6
	-167		0	17	-610	-760
US Rail / Short Line						
Origin						
Enroute				4		4
Destination	14			-3	11	22
	14			1	11	26



Port Unloads - 2/13/2019

	Prince Rupert	Vancouver	West Coast Total	Thunder Bay	Total
CN	211	111	322		322
CP		189	189		189
	211	300	511		511



Port Terminal Status

Vancouver

Daily Activity for 2/13/2019

	Cars Arrived	Cars Received in Interchange	Cars Delivered in Interchange	Cars Placed for Unloading	Loads on Wheels at Destination As of 2/13/2019
CN	1	5	99	124	239
CP	589	98	7	151	521
SRY		3		7	40

Port Unloads

	02/13	02/12	Week To Date	Last Week
CN	111	239	609	2,057
CP	189	40	310	2,243
SRY	7	3	17	79

Age Profile of Loaded Cars Waiting Placement for Unloading

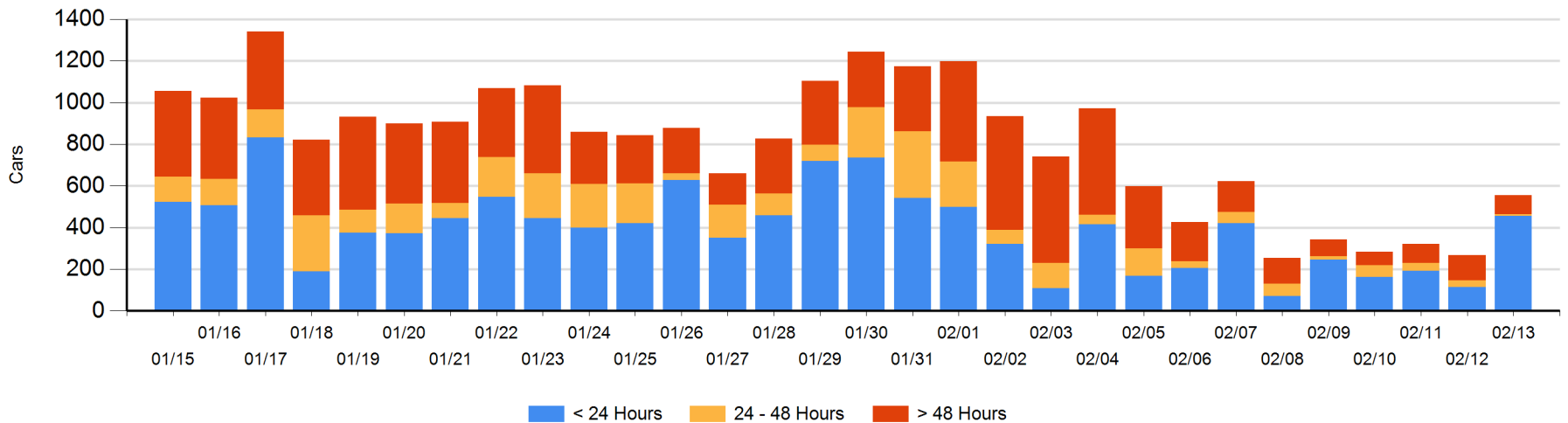
Today

	< 24 Hrs	24 - 48 Hrs	> 48-72 Hrs	> 72 Hrs	Total On Hand
CN	1		10	60	71
CP	456	7	3	18	484
SRY					0

Change in Last 24 Hours

	< 24 Hrs	24-48 Hrs	48 - 72 Hrs	> 72 Hrs
CN	1	-27	-25	16
CP	343	0	3	-23
SRY				

Loaded Cars on Hand Vancouver Waiting for Placement - Last 30 Days All Railways



Port Terminal Status

Prince Rupert

Daily Activity for 2/13/2019

	Cars Arrived	Cars Received in Interchange	Cars Delivered in Interchange	Cars Placed for Unloading	Loads on Wheels at Destination As of 2/13/2019
CN	141			141	118

Port Unloads

	02/13	02/12	Week To Date	Last Week
CN	211	127	599	825

Age Profile of Loaded Cars Waiting Placement for Unloading

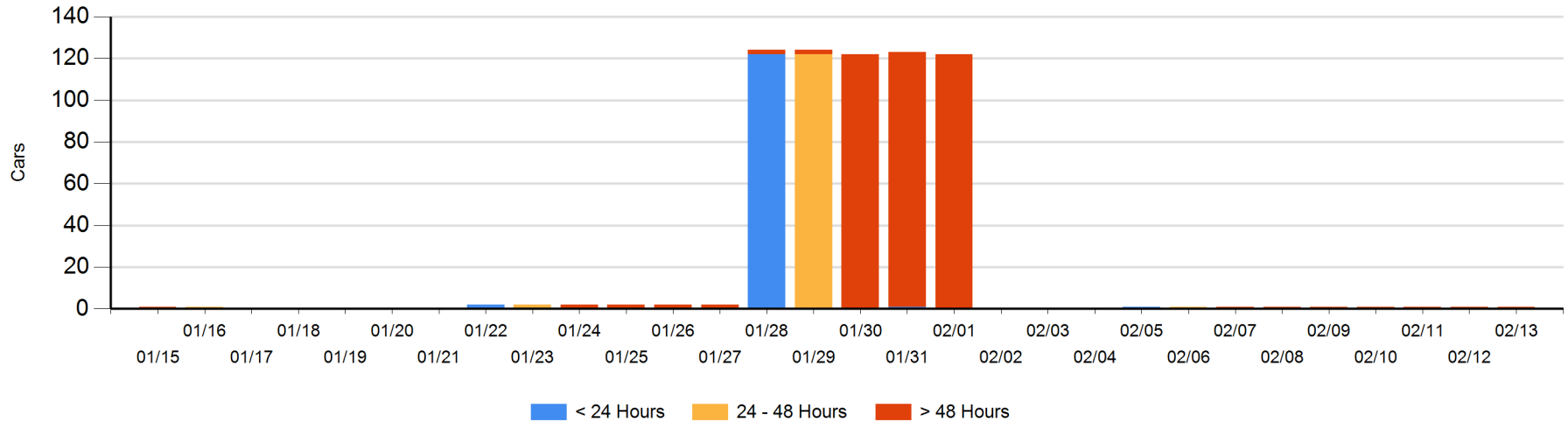
Today

	< 24 Hrs	24 - 48 Hrs	> 48-72 Hrs	> 72 Hrs	Total On Hand
CN				1	1

Change in Last 24 Hours

	< 24 Hrs	24-48 Hrs	48 - 72 Hrs	> 72 Hrs
CN				0

Loaded Cars on Hand Prince Rupert Waiting for Placement - Last 30 Days All Railways



Port Terminal Status

Thunder Bay

Daily Activity for 2/13/2019

	Cars Arrived	Cars Received in Interchange	Cars Delivered in Interchange	Cars Placed for Unloading	Loads on Wheels at Destination As of 2/13/2019
CN					1
CP					4

Port Unloads

	02/13	02/12	Week To Date	Last Week
CN				
CP		1	1	7

Age Profile of Loaded Cars Waiting Placement for Unloading

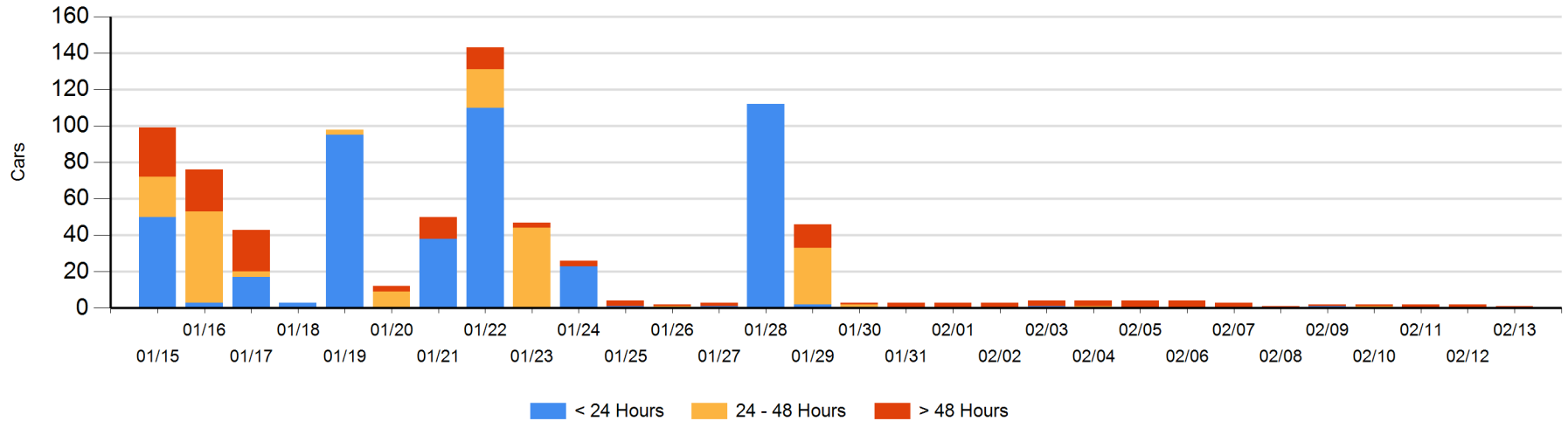
Today

	< 24 Hrs	24 - 48 Hrs	> 48-72 Hrs	> 72 Hrs	Total On Hand
CN				1	1
CP					0

Change in Last 24 Hours

	< 24 Hrs	24-48 Hrs	48 - 72 Hrs	> 72 Hrs
CN				0
CP				-1

Loaded Cars on Hand Thunder Bay Waiting for Placement - Last 30 Days All Railways



Measurement Definitions

Loads on Wheels	<p>Count of loaded rail cars including all rail cars that have been released loaded at origin and have not been reported by the railway as unloaded at destination.</p> <p>Counts include all rail cars (hopper cars and boxcars) moving within a pipeline.</p>
Loads Not Moving	<p>Loaded rail cars for which the railways have not reported a movement event for 48 hours or more whether the rail car is at origin, enroute or at destination.</p>
Port Unloads	<p>Count of rail cars reported by railways as unloaded at the western port destinations of Vancouver, Prince Rupert and Thunder Bay.</p> <p>Unload counts include all rail cars (hopper cars and boxcars) unloaded by all receivers including major port terminals, transloaders and other receivers.</p>
Cars Arrived	<p>Count of rail cars reported as arrived at the destination railway terminal.</p>
Cars Received in Interchange	<p>Count of rail cars received in interchange by each railway within a destination railway terminal. Interchange activity is tracked for the Vancouver and Thunder Bay pipelines as applicable.</p>
Cars Delivered in Interchange	<p>Count of rail cars delivered in interchange by each railway within a destination railway terminal. Interchange activity is tracked for the Vancouver and Thunder Bay pipelines as applicable.</p>
Cars Placed for Unloading	<p>Count of rail cars reported by the railways as placed loaded at the receiver's facility for unloading.</p>
Loads on Wheels at Destination	<p>Count of rail cars that remain under load within the destination railway terminal including rail cars that have been reported as placed for unloading but not yet reported as unloaded.</p>
Waiting Placement for Unloading	<p>Count of rail cars that have been reported as arrived at the destination railway terminal but not reported as placed for unloading by the railway.</p> <p>For the Ports of Vancouver, Prince Rupert and Thunder Bay the count of rail cars waiting placement for unloading is categorized by age – i.e. the elapsed time from arrival at destination to the current report date.</p>