

SPEED READ

- Loads on wheels decreased overnight, marking a decline in both CN and CP volumes. On a net basis, volumes declined due to reduced traffic in the Vancouver and Prince Rupert corridors offset by higher traffic in the USA/MEX, E. Canada and Thunder Bay corridors.
- Network fluidity deteriorated overnight, led by an increase in idle car counts on CP by 33% (+410) offset by a decline in idle car counts on CN by 3% (-45). The total count of cars for 4+ days on both railways declined 7% (-138) overnight - currently at 1,848 cars.
- Three days in Week 30 unloads now ahead of prior week's performance by less than 1,300 unloads, marking improved week over week performance at Vancouver and Thunder Bay offset by lower unloads at Prince Rupert.

Loads on Wheels

- Loads on wheels declined 6% (-652) overnight, due to lower traffic on both CN and CP - combined total at 10,252 and 2% below the trailing 30-day average.
- On a net basis, the decline in loads on wheels reflects lower traffic in the Vancouver and Prince Rupert corridors offset by higher traffic in the USA/MEX, E. Canada and Thunder Bay corridors.
- CN volumes decreased 8% (-478) overnight, with reduced volumes across all corridors - Vancouver, Prince Rupert, USA/MEX and E. Canada. System wide CN loads on wheels presently at 5,592 and 3% above the trailing 30-day average.
- CP volumes fell 6% (-276) overnight, driven by a decline in traffic in the Vancouver and E. Canada corridors offset by an increase in volumes in the USA/MEX and Thunder Bay corridors. CP system wide loads on wheels currently at 4,405, the lowest seen in the last 30 days, and 8% below the trailing 30-day average.
- Vancouver now at 5,861, decreased 8% (-501) overnight, now 12% below the trailing 30-day average.
- The Prince Rupert pipeline presently at 1,799, fell 9% (-168) overnight, and 10% above the trailing 30-day average.
- Thunder Bay volumes increased 14% (+1) overnight - currently at 8 and 87% below the trailing 30-day average, with 75% of traffic moving on CP.

Hopper Car Rationing

- CN rationed 561 hopper cars in week 28.

Loads Not Moving

- **The count of cars not moving for 48+ hours increased 12% (+365) overnight, reflecting higher counts on CP offset by reduced counts on CN. Idle car counts presently at 3,344 and 2% above the trailing 30-day average.**
- CN
 - **The count of idle cars for 48+ hours declined 3% (-45) overnight - currently at 1,699 cars.**
 - The number of cars idle for 4+ days decreased 8% (-89) overnight - presently at 977 cars.
 - The count of cars not moving for 7+ days gained 13% (+75) overnight - now at 644 cars.
 - Vancouver represents 35% of all idle cars.
 - In total 58% of all idle cars are dwelling at origin locations.
- CP
 - **CP idle car counts for 48+ hours gained 33% (+410) overnight - now at 1,645 cars.**
 - The number of cars idle for 4+ days fell 5% (-49) overnight - currently at 871 cars.

- The number of cars idle for 7+ days increased significantly by 54% (+164) overnight - now at 466 cars.
- Vancouver accounts for 60% of all idle cars.
- In total 56% of all idle cars are dwelling at origin locations.

Port Performance

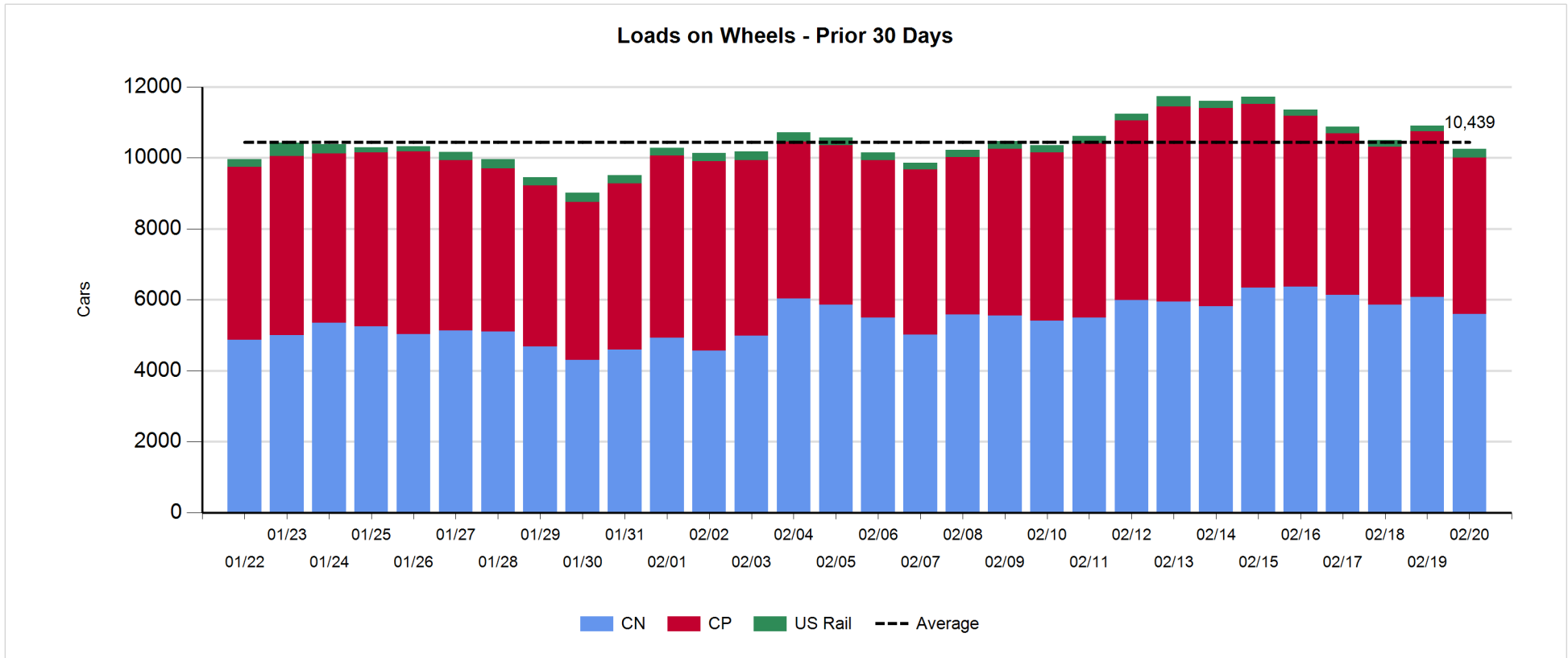
- CN and CP reported a total of 1,058 cars unloaded at the three major ports, now 25% above the trailing 30-day average. Three days in Week 30 unloads now ahead of last week's pace by less than 1,300 unloads, marking higher unloads at Vancouver and Thunder Bay offset by lower unloads at Prince Rupert.
- Vancouver
 - 890 unloads reported by CN and CP at the Port of Vancouver; CN - 483 and CP - 407. Three days in Week 30 unloads are tracking ahead of last week's performance by less than 1,550 unloads.
 - There are 1,100 cars on site at Vancouver with more than 700 cars arriving at the port in the last 24 hours.
 - CN and CP have more than 850 cars in British Columbia en route to Vancouver, with nearly 400 cars at Kamloops and west, and 60% of traffic moving on CN.
- Prince Rupert
 - Prince Rupert reported 168 unloads, now behind last week's unloads after three days by more than 300 unloads.
 - Loads on wheels now above 1,000 cars - currently at 1,799 cars.
 - There are more than 350 cars west of Jasper en route to Prince Rupert.
 - There are 300 cars on site at Prince Rupert with more than 400 cars arriving at the port in the last 24 hours.
- Thunder Bay
 - Zero unloads were reported at Thunder Bay yesterday. Three days in Week 30 unloads are tracking ahead of last week's pace by more than 50 unloads.
 - There are 7 cars on site at Thunder Bay with 1 car arriving at the port in the prior 24 hours.
 - There are 1 car en route to Thunder Bay from Winnipeg and east.

Daily Loads on Wheels - 2/20/2019

	E Canada	Prince Rupert	Thunder Bay	USA/MEX	Vancouver	Total
CN	904	1,799	2	229	2,658	5,592
CP	688		6	542	3,169	4,405
Short Line	160				34	194
US Rail				61		61
	1,752	1,799	8	832	5,861	10,252

Change in Loads on Wheels - Prior 24 Hours

	E Canada	Prince Rupert	Thunder Bay	USA/MEX	Vancouver	Total
CN	-39	-168	0	-13	-258	-478
CP	-94		1	44	-227	-276
Short Line	139				-16	123
US Rail				-21		-21
	6	-168	1	10	-501	-652

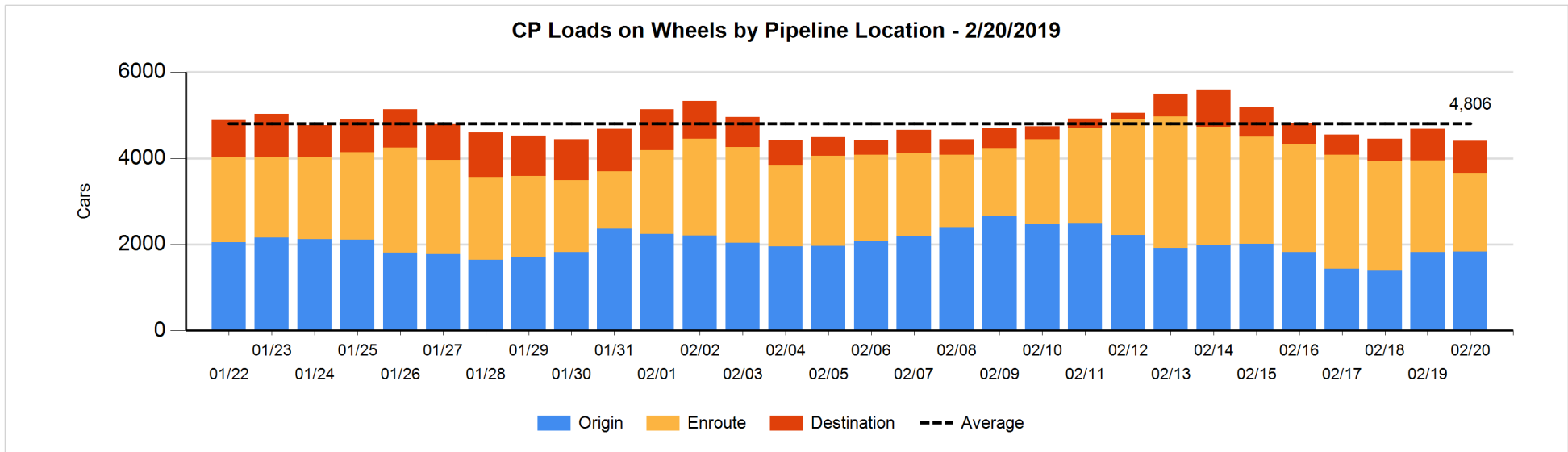
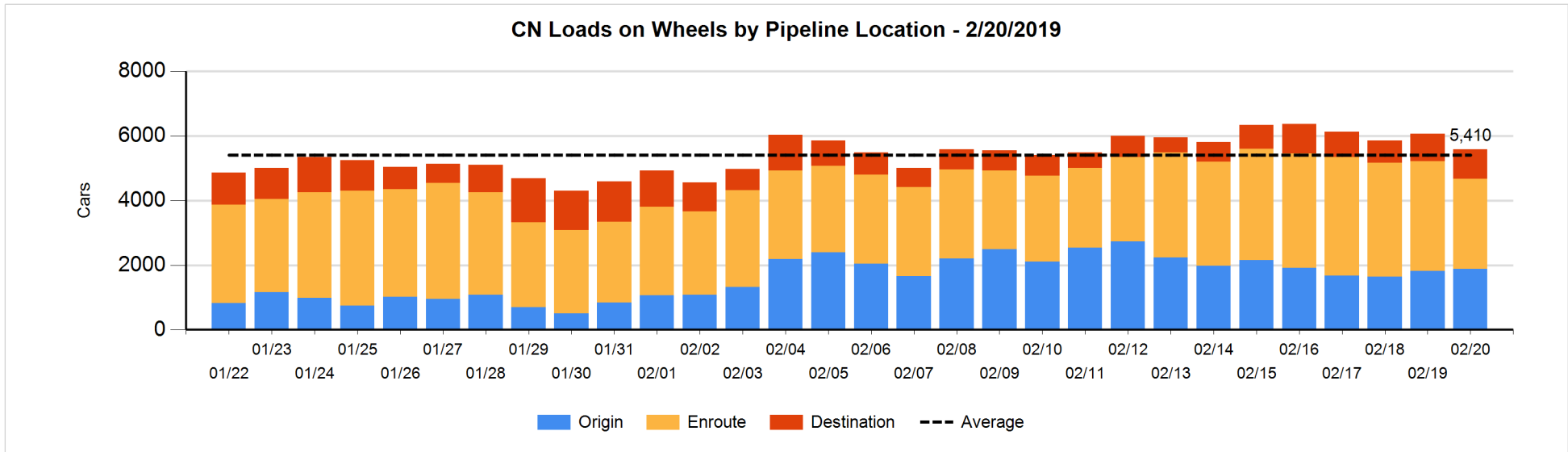


Daily Loads on Wheels By Pipeline Location - 2/20/2019

	E Canada	Prince Rupert	Thunder Bay	USA/MEX	Vancouver	Total
CN						
Origin	329	665		121	766	1,881
Enroute	430	836		103	1,427	2,796
Destination	145	298	2	5	465	915
	904	1,799	2	229	2,658	5,592
CP						
Origin	338			332	1,160	1,830
Enroute	249		1	180	1,401	1,831
Destination	101		5	30	608	744
	688		6	542	3,169	4,405
US Rail / Short Line						
Origin						
Enroute	101			32		133
Destination	59			29	34	122
	160			61	34	255

Change in Daily Loads on Wheels By Pipeline Location - Prior 24 Hours

	E Canada	Prince Rupert	Thunder Bay	USA/MEX	Vancouver	Total
CN						
Origin	137	-204		3	127	63
Enroute	-173	-212		1	-221	-605
Destination	-3	248	0	-17	-164	64
	-39	-168	0	-13	-258	-478
CP						
Origin	0			48	-33	15
Enroute	-95		0	-21	-182	-298
Destination	1		1	17	-12	7
	-94		1	44	-227	-276
US Rail / Short Line						
Origin						
Enroute	101			-8		93
Destination	38			-13	-16	9
	139			-21	-16	102

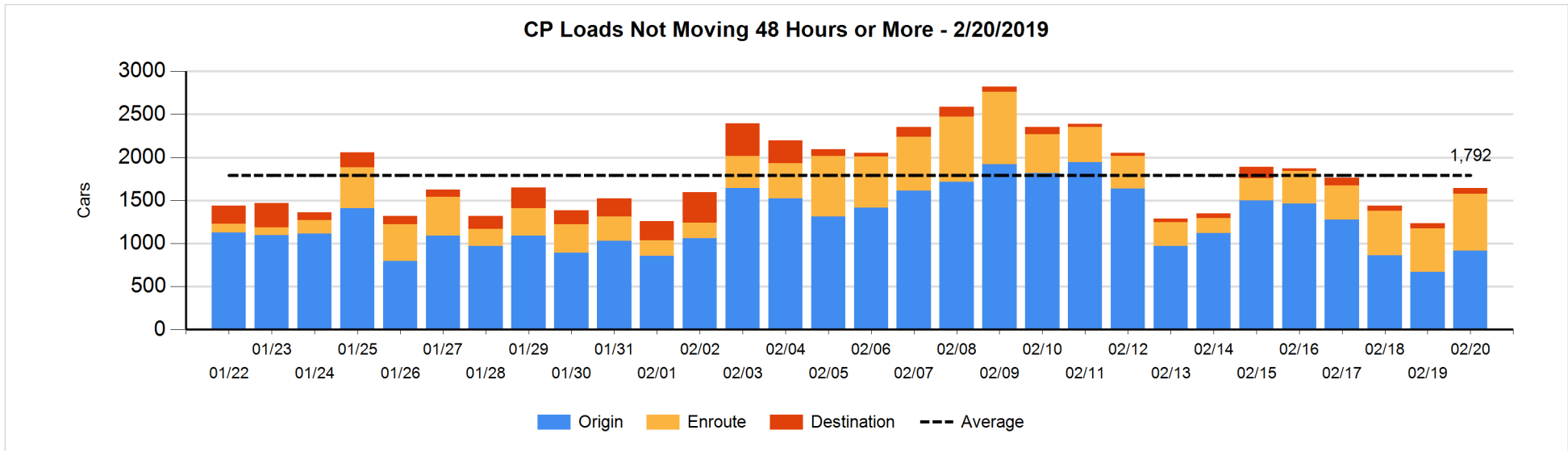
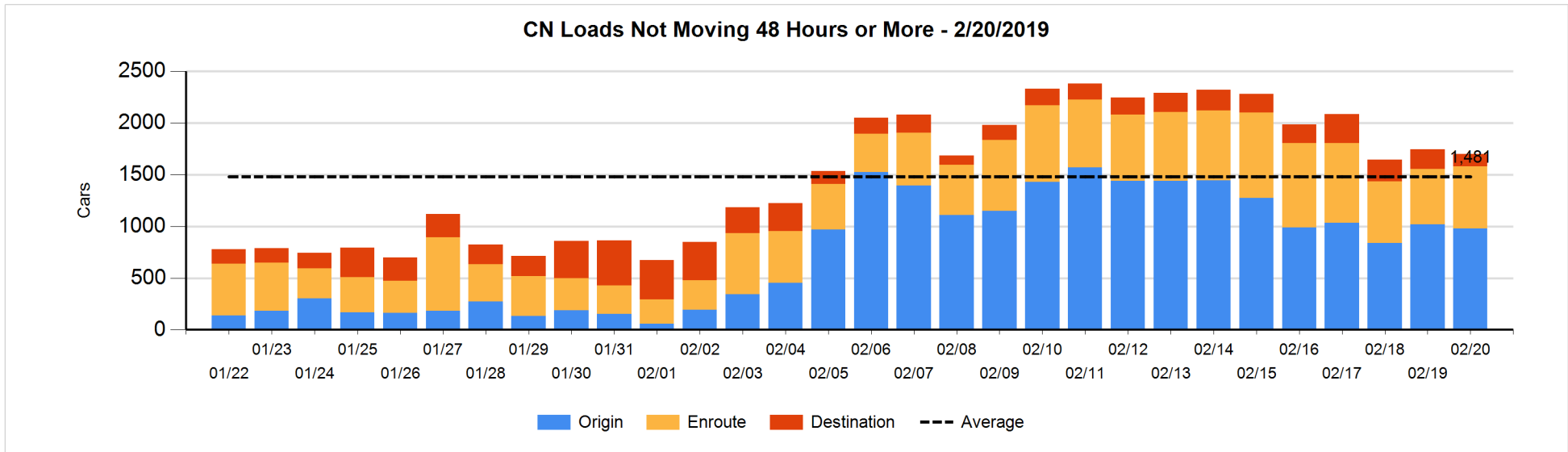


Loads Not Moving 48 Hours or More - 2/20/2019

	E Canada	Prince Rupert	Thunder Bay	USA/MEX	Vancouver	Total
CN						
Origin	150	411		65	351	977
Enroute	145	226		29	201	601
Destination	45	36	2	1	37	121
	340	673	2	95	589	1699
CP						
Origin	225			187	504	916
Enroute	108			120	431	659
Destination	1		1	11	57	70
	334		1	318	992	1645
US Rail / Short Line						
Origin						
Enroute				16		16
Destination	10			26	17	53
	10			42	17	69

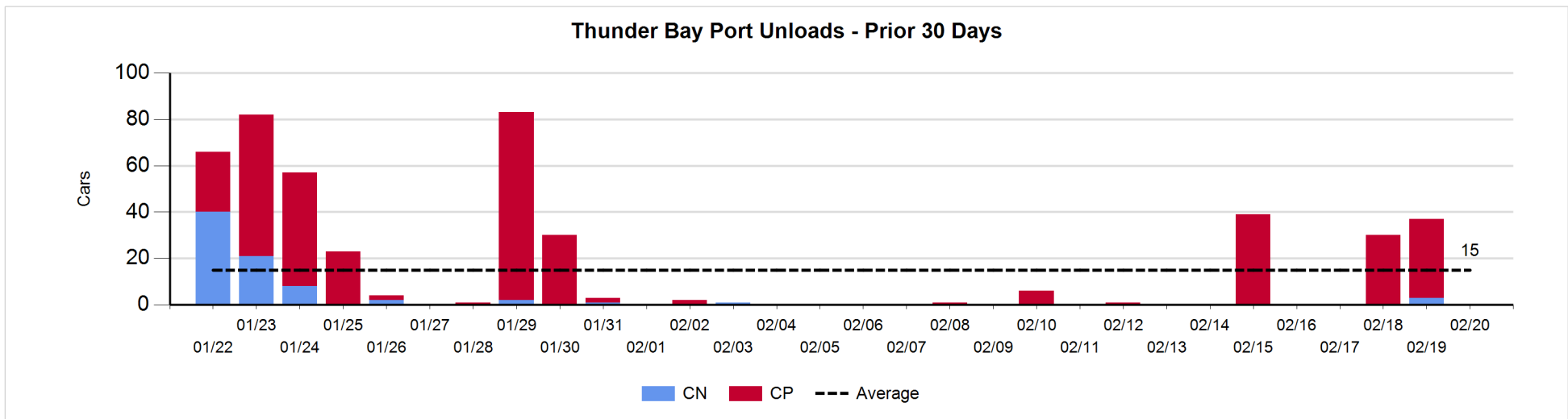
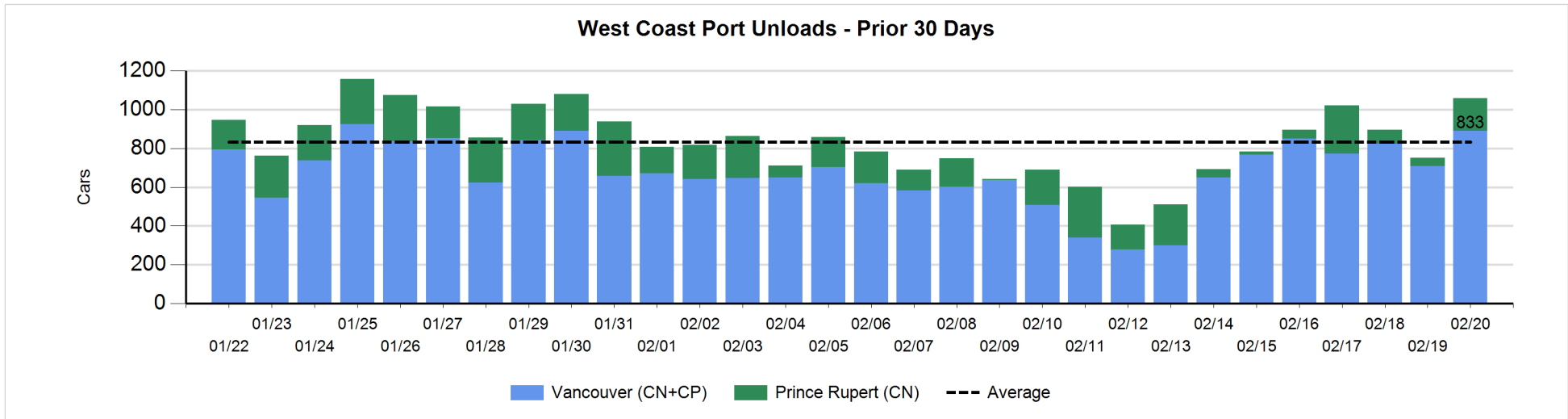
Change in Loads Not Moving 48 Hours or More - 2/20/2019

	E Canada	Prince Rupert	Thunder Bay	USA/MEX	Vancouver	Total
CN						
Origin	1	-182		1	139	-41
Enroute	-18	35		-16	62	63
Destination	-61	0	0	0	-6	-67
	-78	-147	0	-15	195	-45
CP						
Origin	112			149	-17	244
Enroute	-90			70	174	154
Destination	0		-2	-2	16	12
	22		-2	217	173	410
US Rail / Short Line						
Origin						
Enroute				-6		-6
Destination	-11			-8	3	-16
	-11			-14	3	-22



Port Unloads - 2/20/2019

	Prince Rupert	Vancouver	West Coast Total	Thunder Bay	Total
CN	168	483	651		651
CP		407	407		407
	168	890	1,058		1,058



Port Terminal Status

Vancouver

Daily Activity for 2/20/2019

	Cars Arrived	Cars Received in Interchange	Cars Delivered in Interchange	Cars Placed for Unloading	Loads on Wheels at Destination As of 2/20/2019
CN	295	131	99	339	465
CP	418	99	131	351	608
SRY	4			18	34

Port Unloads

	02/20	02/19	Week To Date	Last Week
CN	483	394	1,296	1,989
CP	407	314	1,125	1,969
SRY	20	10	46	40

Age Profile of Loaded Cars Waiting Placement for Unloading

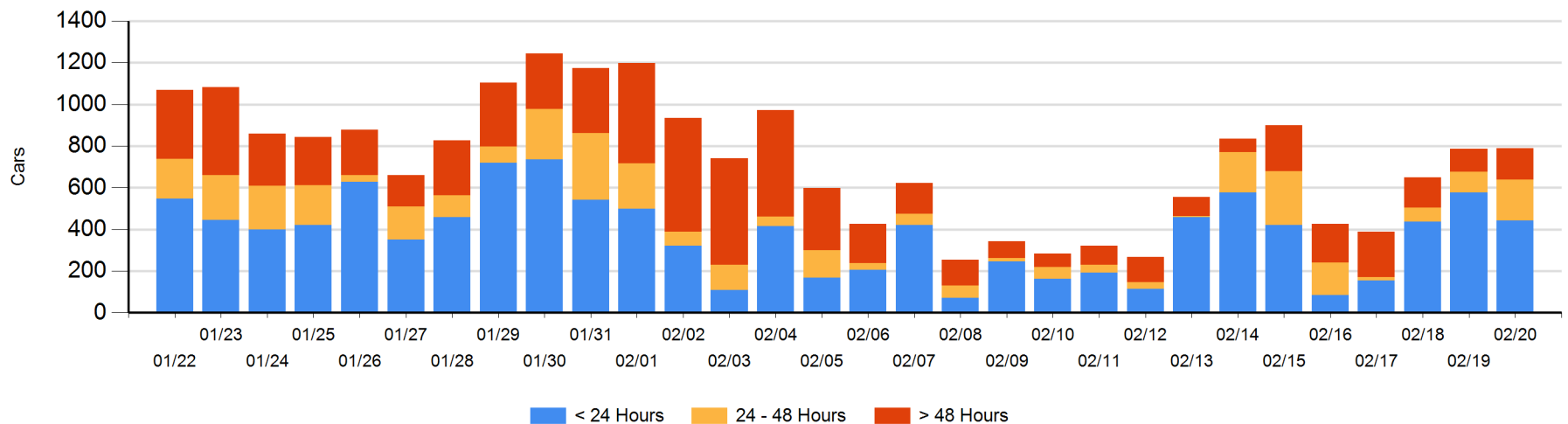
Today

	< 24 Hrs	24 - 48 Hrs	> 48-72 Hrs	> 72 Hrs	Total On Hand
CN	158	114	5	15	292
CP	282	84	57	61	484
SRY	2		9	2	13

Change in Last 24 Hours

	< 24 Hrs	24-48 Hrs	48 - 72 Hrs	> 72 Hrs
CN	-177	93	1	-2
CP	39	16	47	-16
SRY	2	-9	9	0

Loaded Cars on Hand Vancouver Waiting for Placement - Last 30 Days All Railways



Port Terminal Status

Prince Rupert

Daily Activity for 2/20/2019

	Cars Arrived	Cars Received in Interchange	Cars Delivered in Interchange	Cars Placed for Unloading	Loads on Wheels at Destination As of 2/20/2019
CN	416			416	298

Port Unloads

	02/20	02/19	Week To Date	Last Week
CN	168	42	282	951

Age Profile of Loaded Cars Waiting Placement for Unloading

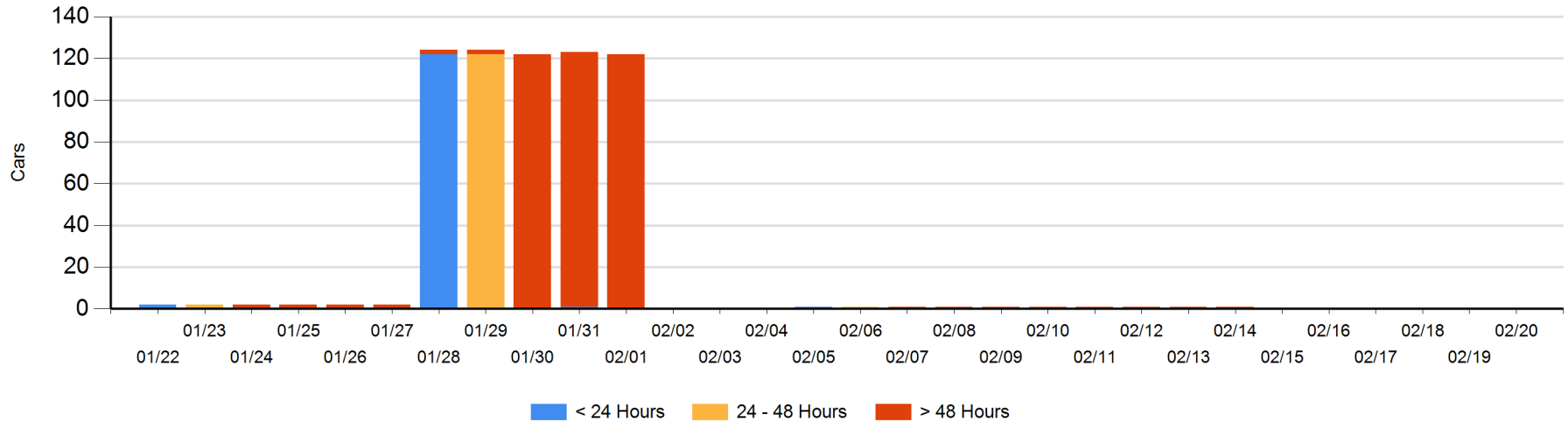
Today

	< 24 Hrs	24 - 48 Hrs	> 48-72 Hrs	> 72 Hrs	Total On Hand
CN					0

Change in Last 24 Hours

	< 24 Hrs	24-48 Hrs	48 - 72 Hrs	> 72 Hrs
CN				

Loaded Cars on Hand Prince Rupert Waiting for Placement - Last 30 Days All Railways



Port Terminal Status

Thunder Bay

Daily Activity for 2/20/2019

	Cars Arrived	Cars Received in Interchange	Cars Delivered in Interchange	Cars Placed for Unloading	Loads on Wheels at Destination As of 2/20/2019
CN					2
CP	1			4	5

Port Unloads

	02/20	02/19	Week To Date	Last Week
CN		3	3	
CP		34	64	40

Age Profile of Loaded Cars Waiting Placement for Unloading

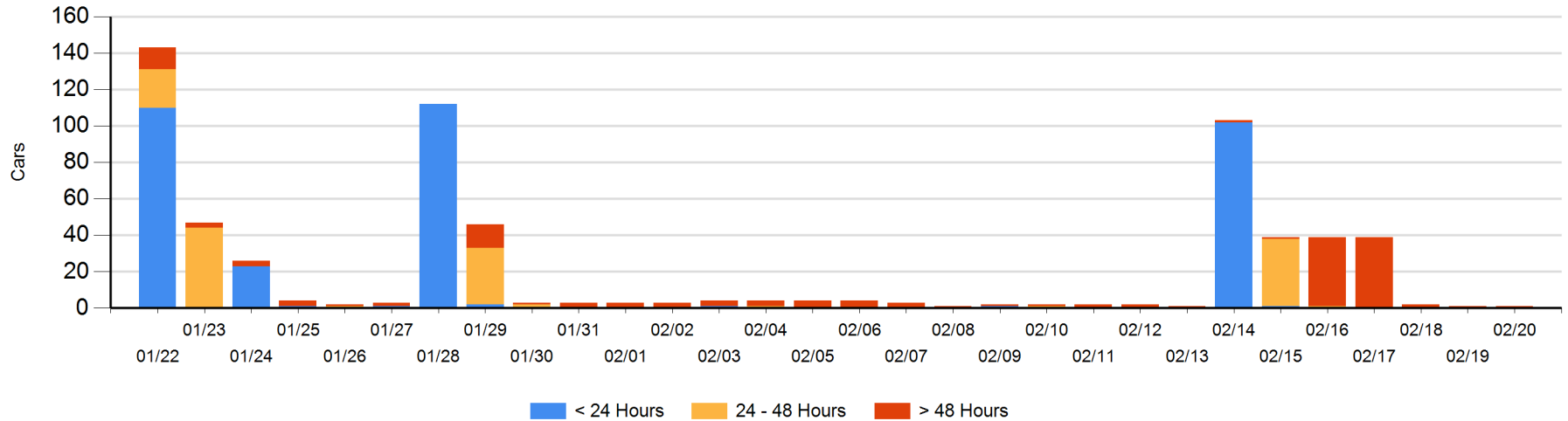
Today

	< 24 Hrs	24 - 48 Hrs	> 48-72 Hrs	> 72 Hrs	Total On Hand
CN				1	1
CP					0

Change in Last 24 Hours

	< 24 Hrs	24-48 Hrs	48 - 72 Hrs	> 72 Hrs
CN				0
CP				

Loaded Cars on Hand Thunder Bay Waiting for Placement - Last 30 Days All Railways



Measurement Definitions

Loads on Wheels	<p>Count of loaded rail cars including all rail cars that have been released loaded at origin and have not been reported by the railway as unloaded at destination.</p> <p>Counts include all rail cars (hopper cars and boxcars) moving within a pipeline.</p>
Loads Not Moving	<p>Loaded rail cars for which the railways have not reported a movement event for 48 hours or more whether the rail car is at origin, enroute or at destination.</p>
Port Unloads	<p>Count of rail cars reported by railways as unloaded at the western port destinations of Vancouver, Prince Rupert and Thunder Bay.</p> <p>Unload counts include all rail cars (hopper cars and boxcars) unloaded by all receivers including major port terminals, transloaders and other receivers.</p>
Cars Arrived	<p>Count of rail cars reported as arrived at the destination railway terminal.</p>
Cars Received in Interchange	<p>Count of rail cars received in interchange by each railway within a destination railway terminal. Interchange activity is tracked for the Vancouver and Thunder Bay pipelines as applicable.</p>
Cars Delivered in Interchange	<p>Count of rail cars delivered in interchange by each railway within a destination railway terminal. Interchange activity is tracked for the Vancouver and Thunder Bay pipelines as applicable.</p>
Cars Placed for Unloading	<p>Count of rail cars reported by the railways as placed loaded at the receiver's facility for unloading.</p>
Loads on Wheels at Destination	<p>Count of rail cars that remain under load within the destination railway terminal including rail cars that have been reported as placed for unloading but not yet reported as unloaded.</p>
Waiting Placement for Unloading	<p>Count of rail cars that have been reported as arrived at the destination railway terminal but not reported as placed for unloading by the railway.</p> <p>For the Ports of Vancouver, Prince Rupert and Thunder Bay the count of rail cars waiting placement for unloading is categorized by age – i.e. the elapsed time from arrival at destination to the current report date.</p>