

## SPEED READ

- Loads on wheels increased slightly overnight, marking an increase in CN traffic offset by lower CP volumes. On a net basis, volumes rose due to higher traffic in the Prince Rupert and Vancouver corridors offset by reduced traffic in the USA/MEX and E. Canada corridors.
- Network fluidity deteriorated overnight, led by an increase in idle car counts on both CN and CP by 26% (+430) and 27% (+409), respectively. The total count of cars for 4+ days on both railways rose 4% (+72) overnight - currently at 1,967 cars.
- Week 30 unloads concluded ahead of prior week's performance by 1,650 unloads, marking improved week over week performance across all three major ports - Vancouver, Thunder Bay and Prince Rupert.

---

## Loads on Wheels

- Loads on wheels increased marginally 1% (+90) overnight, due to higher traffic on CN offset by lower traffic on CP - combined total at 10,020 and 4% below the trailing 30-day average.
- On a net basis, the increase in loads on wheels indicates higher volumes in the Prince Rupert and Vancouver corridors offset by reduced traffic in the USA/MEX and E. Canada corridors.
- CN volumes rose 8% (+368) overnight, with higher traffic in the Vancouver and Prince Rupert corridors offset by reduced traffic in the USA/MEX and E. Canada corridors. System wide CN loads on wheels now at 5,261 and 3% below the trailing 30-day average.
- CP volumes declined 6% (-283) overnight, driven by a decline in volumes across all corridors - Vancouver, USA/MEX and E. Canada. CP system wide loads on wheels presently at 4,593 and 4% below the trailing 30-day average.
- Vancouver now at 6,016, increased slightly (+25) overnight, now 9% below the trailing 30-day average.
- The Prince Rupert pipeline now at 1,497, gained 6% (+79) overnight, and 6% below the trailing 30 day-average.
- Thunder Bay volumes remained unchanged (0) overnight - currently at 12 and 68% below the trailing 30-day average, with 50% of traffic moving on CP.

## Hopper Car Rationing

- CN rationed 947 hopper cars in week 29.
- CP rationed 9 hopper cars in week 29.

## Loads Not Moving

- **The count of cars not moving for 48+ hours increased 27% (+839) overnight, marking higher counts on both CN and CP. Idle car counts presently at 3,979 and 17% above the trailing 30-day average.**
- CN
  - **The count of idle cars for 48+ hours rose 26% (+430) overnight - presently at 2,056 cars.**
  - The number of cars idle for 4+ days increased slightly by 1% (+12) overnight - presently at 1,178 cars.
  - The count of cars not moving for 7+ days gained 44% (+157) overnight - currently at 515 cars.
  - Vancouver represents 51% of all idle cars.
  - In total 66% of all idle cars are dwelling at origin locations.
- CP
  - **CP idle car counts for 48+ hours increased 27% (+409) overnight - presently at 1,923 cars.**
  - The number of cars idle for 4+ days rose 8% (+60) overnight - presently at 789 cars.

- The number of cars idle for 7+ days fell 7% (-29) overnight - now at 390 cars.
- Vancouver accounts for 66% of all idle cars.
- In total 61% of all idle cars are dwelling at origin locations.

### **Port Performance**

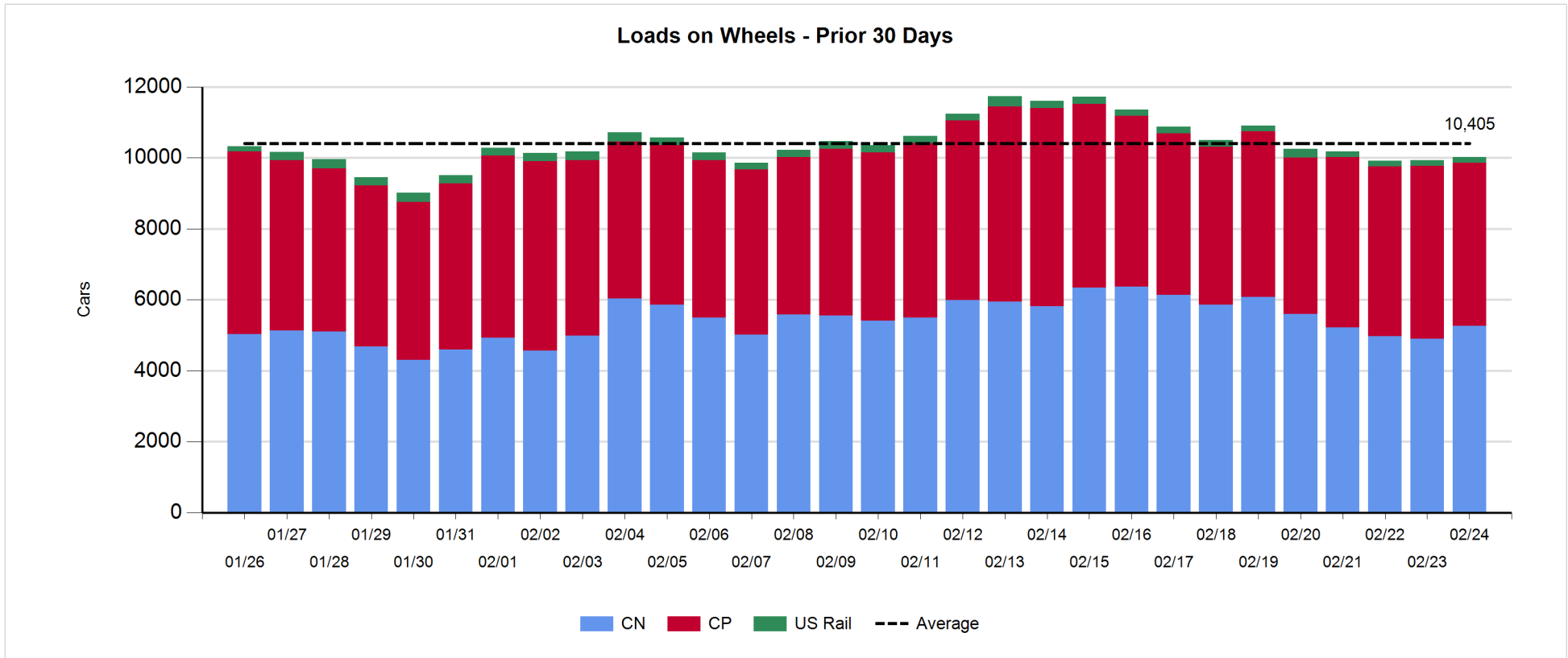
- CN and CP reported a total of 1,093 cars unloaded at the three major ports, now 30% above the trailing 30-day average. Week 30 unloads concluded ahead of last week's pace by 1,650 unloads, marking higher unloads across all three major ports - Vancouver, Thunder Bay and Prince Rupert.
- Vancouver
  - 977 unloads, the highest seen in the last 30 days, was reported by CN and CP at the Port of Vancouver; CN - 373 and CP - 604. Week 30 unloads concluded ahead of last week's performance by 1,450 unloads.
  - There are fewer than 1,100 cars on site at Vancouver with 500 cars arriving at the port in the last 24 hours.
  - CN and CP have 600 cars in British Columbia en route to Vancouver, with more than 200 cars at Kamloops and west, and 58% of traffic moving on CP.
- Prince Rupert
  - Prince Rupert reported 116 unloads, ended ahead of last week's unloads by more than 150 unloads.
  - Loads on wheels now above 1,000 cars - now at 1,497 cars.
  - There are more than 500 cars west of Jasper en route to Prince Rupert.
  - There are more than 50 cars on site at Prince Rupert with 100 cars arriving at the port in the last 24 hours.
- Thunder Bay
  - Zero unloads were reported at Thunder Bay yesterday. Week 30 unloads ended ahead of last week's pace by fewer than 50 unloads.
  - There are 8 cars on site at Thunder Bay with zero cars arriving at the port in the prior 24 hours.
  - There are 4 cars en route to Thunder Bay from Winnipeg and east.

**Daily Loads on Wheels - 2/24/2019**

	E Canada	Prince Rupert	Thunder Bay	USA/MEX	Vancouver	Total
CN	890	1,497	6	255	2,613	5,261
CP	629		6	587	3,371	4,593
Short Line	53				32	85
US Rail				81		81
	1,572	1,497	12	923	6,016	10,020

**Change in Loads on Wheels - Prior 24 Hours**

	E Canada	Prince Rupert	Thunder Bay	USA/MEX	Vancouver	Total
CN	-1	79	0	-7	297	368
CP	-1		0	-1	-281	-283
Short Line	0				9	9
US Rail				-4		-4
	-2	79	0	-12	25	90

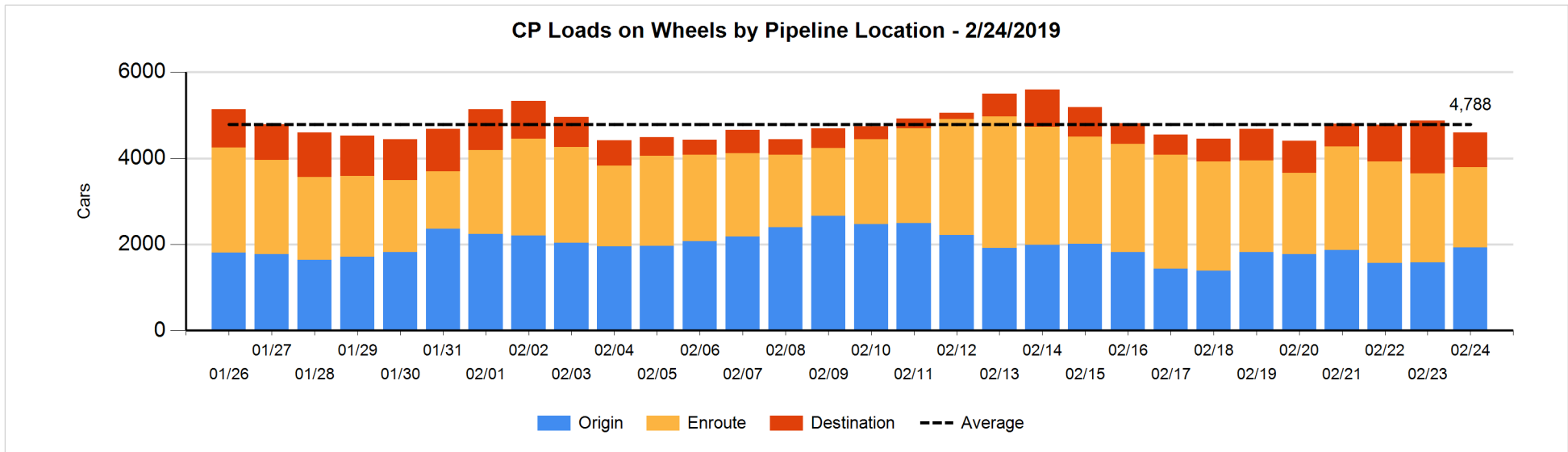
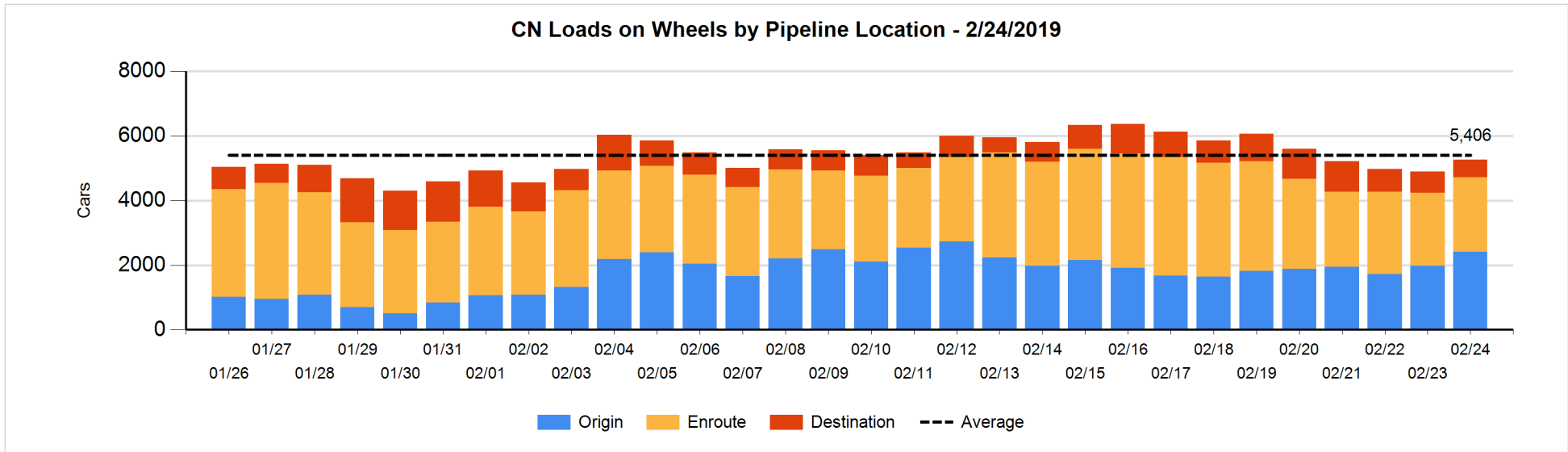


**Daily Loads on Wheels By Pipeline Location - 2/24/2019**

	E Canada	Prince Rupert	Thunder Bay	USA/MEX	Vancouver	Total
CN						
Origin	224	748		88	1,357	2,417
Enroute	536	676	4	163	925	2,304
Destination	130	73	2	4	331	540
	890	1,497	6	255	2,613	5,261
CP						
Origin	257			134	1,532	1,923
Enroute	302			453	1,114	1,869
Destination	70		6		725	801
	629		6	587	3,371	4,593
US Rail / Short Line						
Origin						
Enroute	19			63		82
Destination	34			18	32	84
	53			81	32	166

**Change in Daily Loads on Wheels By Pipeline Location - Prior 24 Hours**

	E Canada	Prince Rupert	Thunder Bay	USA/MEX	Vancouver	Total
CN						
Origin	-55	166		-49	372	434
Enroute	54	-73	0	40	35	56
Destination	0	-14	0	2	-110	-122
	-1	79	0	-7	297	368
CP						
Origin	0			0	349	349
Enroute	-1			0	-205	-206
Destination	0		0	-1	-425	-426
	-1		0	-1	-281	-283
US Rail / Short Line						
Origin						
Enroute	0			6		6
Destination	0			-10	9	-1
	0			-4	9	5

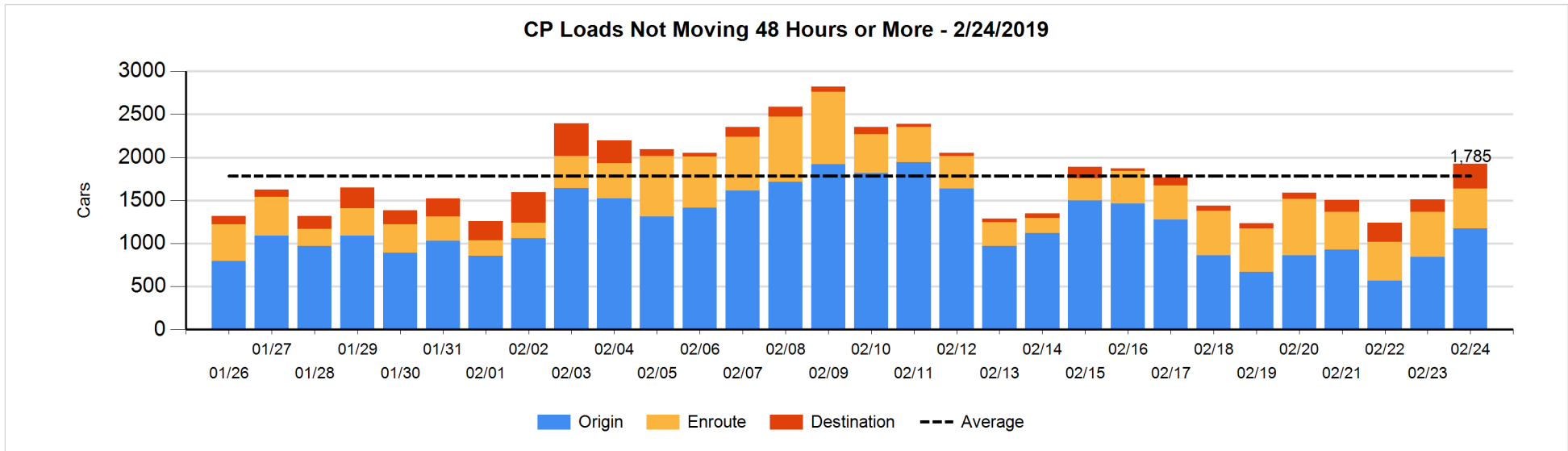
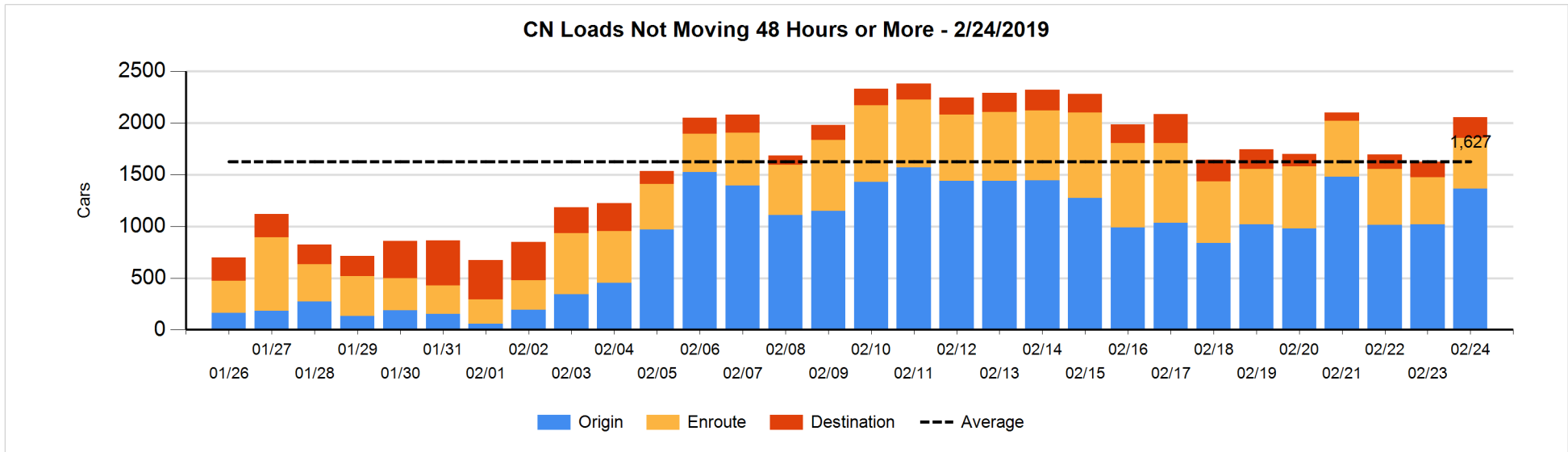


**Loads Not Moving 48 Hours or More - 2/24/2019**

	E Canada	Prince Rupert	Thunder Bay	USA/MEX	Vancouver	Total
CN						
Origin	125	352		88	801	1366
Enroute	189	67		15	216	487
Destination	93	73	2	2	33	203
	407	492	2	105	1050	2056
CP						
Origin	257			134	783	1174
Enroute	160			29	276	465
Destination	70		6		208	284
	487		6	163	1267	1923
US Rail / Short Line						
Origin						
Enroute	19			17		36
Destination	34			16	16	66
	53			33	16	102

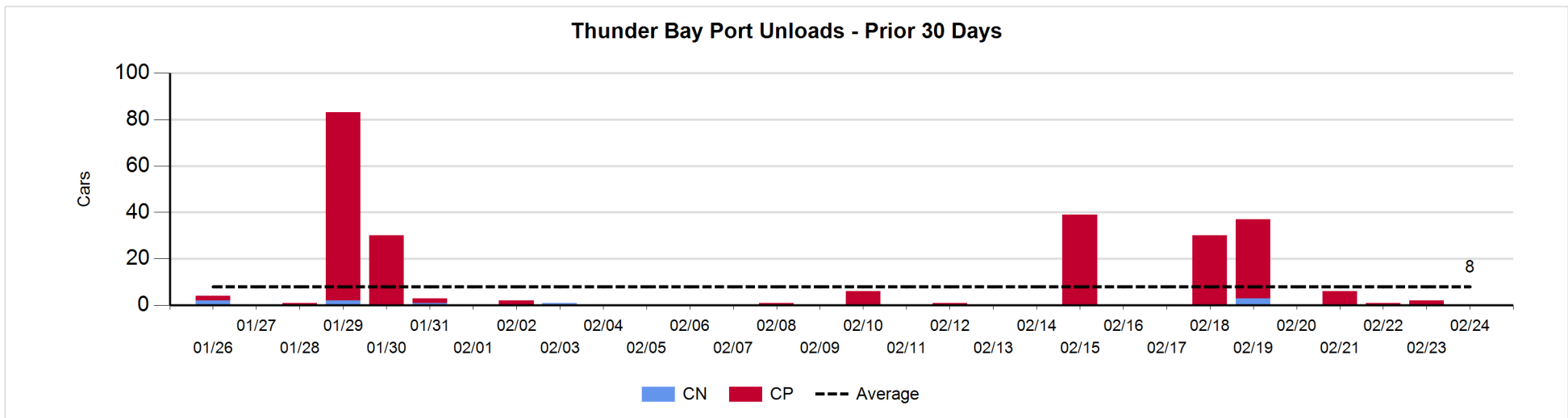
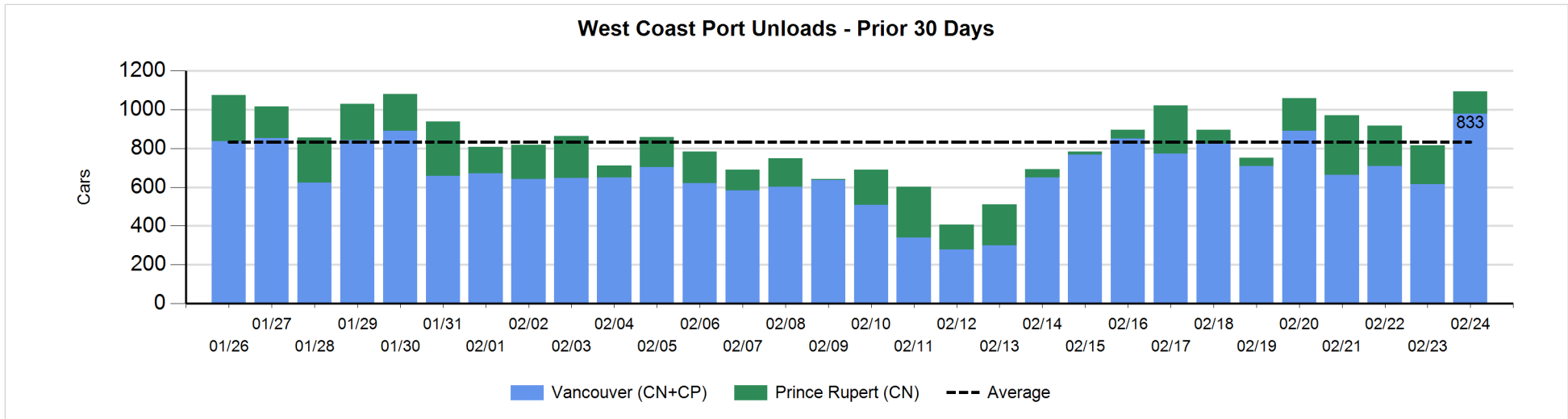
**Change in Loads Not Moving 48 Hours or More - 2/24/2019**

	E Canada	Prince Rupert	Thunder Bay	USA/MEX	Vancouver	Total
CN						
Origin	-1	70		-20	297	346
Enroute	29	-7		-18	28	32
Destination	38	0	0	0	14	52
	66	63	0	-38	339	430
CP						
Origin	26			5	297	328
Enroute	-6			9	-59	-56
Destination	56		1		80	137
	76		1	14	318	409
US Rail / Short Line						
Origin						
Enroute	1			0		1
Destination	0			-7	4	-3
	1			-7	4	-2



Port Unloads - 2/24/2019

	Prince Rupert	Vancouver	West Coast Total	Thunder Bay	Total
CN	116	373	489		489
CP		604	604		604
	116	977	1,093		1,093





**Port Terminal Status**

**Vancouver**

Daily Activity for 2/24/2019

	Cars Arrived	Cars Received in Interchange	Cars Delivered in Interchange	Cars Placed for Unloading	Loads on Wheels at Destination As of 2/24/2019
CN	71	109	17	202	331
CP	427	17	118	449	725
SRY		9			32

**Port Unloads**

	02/24	02/23	Week To Date	Last Week
CN	373	268	2,673	1,989
CP	604	346	2,710	1,969
SRY		6	68	40

**Age Profile of Loaded Cars Waiting Placement for Unloading**

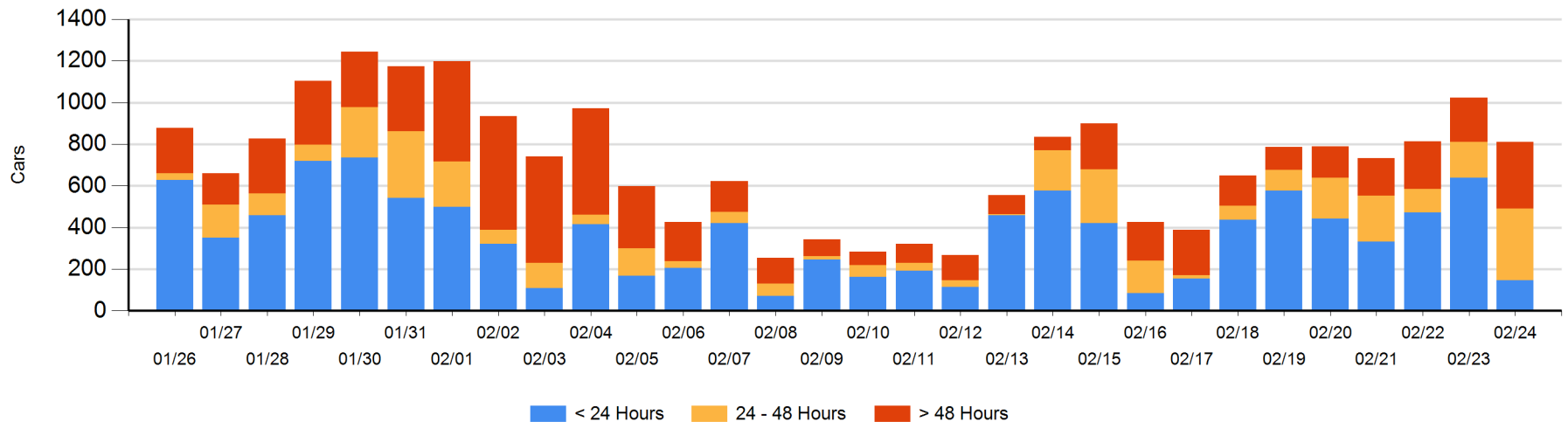
**Today**

	< 24 Hrs	24 - 48 Hrs	> 48-72 Hrs	> 72 Hrs	Total On Hand
CN	71	63	17	75	226
CP	76	281	122	105	584
SRY				1	1

**Change in Last 24 Hours**

	< 24 Hrs	24-48 Hrs	48 - 72 Hrs	> 72 Hrs
CN	-58	14	-39	53
CP	-434	158	80	13
SRY				0

**Loaded Cars on Hand Vancouver Waiting for Placement - Last 30 Days All Railways**



**Port Terminal Status**

**Prince Rupert**

Daily Activity for 2/24/2019

	Cars Arrived	Cars Received in Interchange	Cars Delivered in Interchange	Cars Placed for Unloading	Loads on Wheels at Destination As of 2/24/2019
CN	102			102	73

**Port Unloads**

	02/24	02/23	Week To Date	Last Week
CN	116	201	1,116	951

**Age Profile of Loaded Cars Waiting Placement for Unloading**

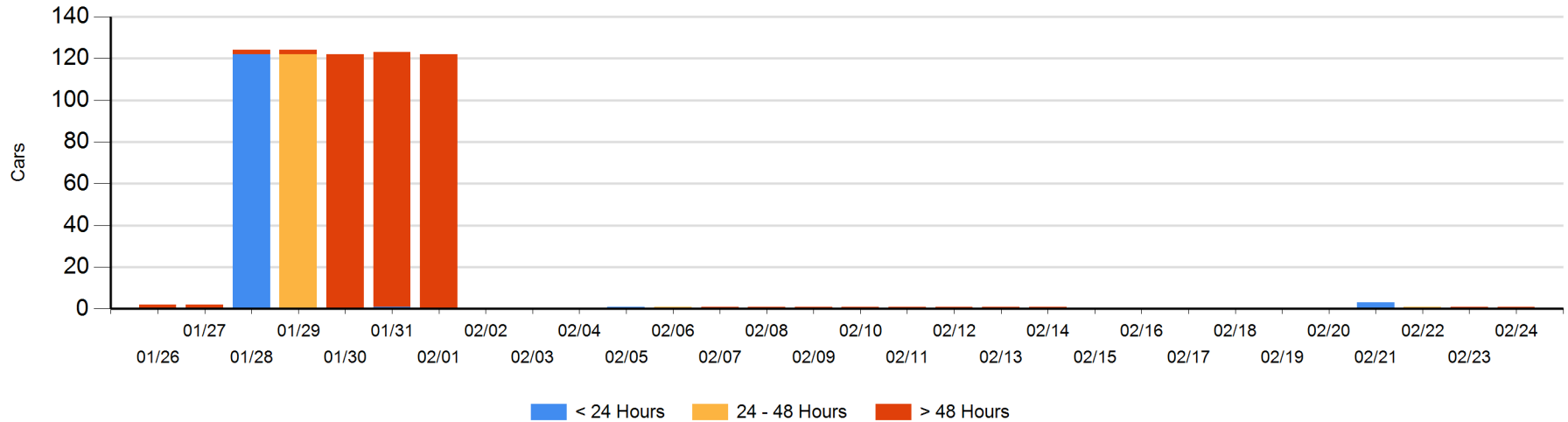
**Today**

	< 24 Hrs	24 - 48 Hrs	> 48-72 Hrs	> 72 Hrs	Total On Hand
CN				1	1

**Change in Last 24 Hours**

	< 24 Hrs	24-48 Hrs	48 - 72 Hrs	> 72 Hrs
CN			-1	1

Loaded Cars on Hand Prince Rupert Waiting for Placement - Last 30 Days All Railways



**Port Terminal Status**

**Thunder Bay**

Daily Activity for 2/24/2019

	Cars Arrived	Cars Received in Interchange	Cars Delivered in Interchange	Cars Placed for Unloading	Loads on Wheels at Destination As of 2/24/2019
CN					2
CP					6

**Port Unloads**

	02/24	02/23	Week To Date	Last Week
CN			3	
CP		2	73	40

**Age Profile of Loaded Cars Waiting Placement for Unloading**

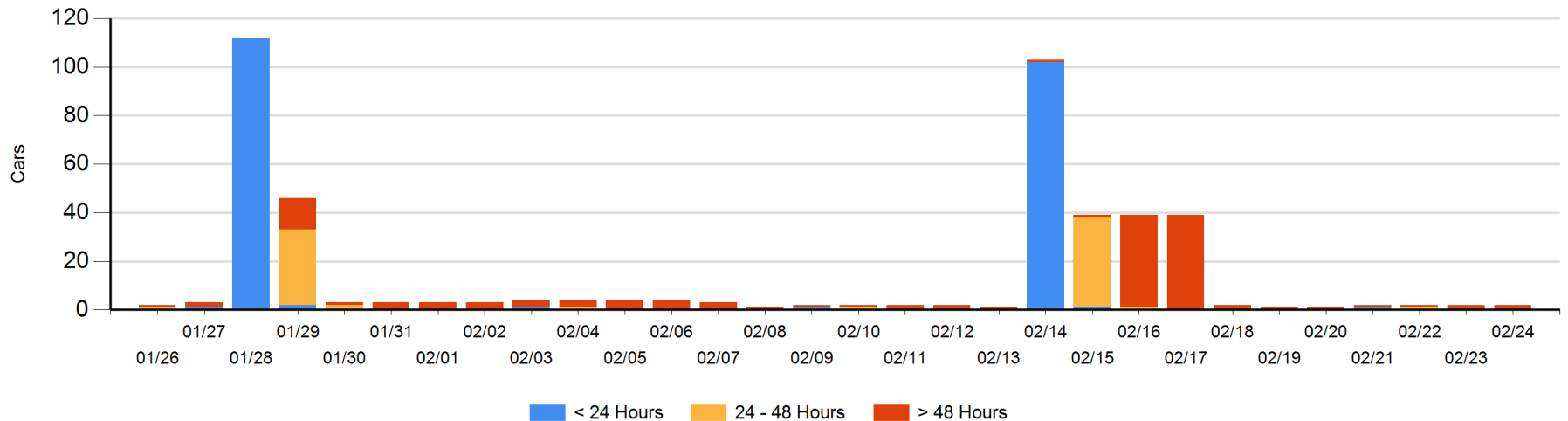
**Today**

	< 24 Hrs	24 - 48 Hrs	> 48-72 Hrs	> 72 Hrs	Total On Hand
CN				1	1
CP				1	1

**Change in Last 24 Hours**

	< 24 Hrs	24-48 Hrs	48 - 72 Hrs	> 72 Hrs
CN				0
CP			-1	1

Loaded Cars on Hand Thunder Bay Waiting for Placement - Last 30 Days All Railways



## Measurement Definitions

Loads on Wheels	<p>Count of loaded rail cars including all rail cars that have been released loaded at origin and have not been reported by the railway as unloaded at destination.</p> <p>Counts include all rail cars (hopper cars and boxcars) moving within a pipeline.</p>
Loads Not Moving	<p>Loaded rail cars for which the railways have not reported a movement event for 48 hours or more whether the rail car is at origin, enroute or at destination.</p>
Port Unloads	<p>Count of rail cars reported by railways as unloaded at the western port destinations of Vancouver, Prince Rupert and Thunder Bay.</p> <p>Unload counts include all rail cars (hopper cars and boxcars) unloaded by all receivers including major port terminals, transloaders and other receivers.</p>
Cars Arrived	<p>Count of rail cars reported as arrived at the destination railway terminal.</p>
Cars Received in Interchange	<p>Count of rail cars received in interchange by each railway within a destination railway terminal. Interchange activity is tracked for the Vancouver and Thunder Bay pipelines as applicable.</p>
Cars Delivered in Interchange	<p>Count of rail cars delivered in interchange by each railway within a destination railway terminal. Interchange activity is tracked for the Vancouver and Thunder Bay pipelines as applicable.</p>
Cars Placed for Unloading	<p>Count of rail cars reported by the railways as placed loaded at the receiver's facility for unloading.</p>
Loads on Wheels at Destination	<p>Count of rail cars that remain under load within the destination railway terminal including rail cars that have been reported as placed for unloading but not yet reported as unloaded.</p>
Waiting Placement for Unloading	<p>Count of rail cars that have been reported as arrived at the destination railway terminal but not reported as placed for unloading by the railway.</p> <p>For the Ports of Vancouver, Prince Rupert and Thunder Bay the count of rail cars waiting placement for unloading is categorized by age – i.e. the elapsed time from arrival at destination to the current report date.</p>