

## SPEED READ

- Loads on wheels decreased slightly overnight, marking a decline in CN volumes offset by higher CP volumes. On a net basis, volumes fell due to lower traffic in the Prince Rupert and E. Canada corridors offset by higher volumes in the Vancouver, Thunder Bay and USA/MEX corridors.
- Network fluidity improved overnight, led by a decline in idle car counts on both CN and CP by 6% (-144) and 13% (-341), respectively. The total count of cars for 4+ days on both railways declined 19% (-491) overnight - presently at 2,161 cars.
- Three days in Week 23 unloads now ahead of prior week's performance by 1,150 unloads, reflecting an improvement in week over week performance across all three major ports - Vancouver, Thunder Bay and Prince Rupert.

---

## Loads on Wheels

- Loads on wheels declined marginally (-2) overnight, due to lower traffic on CN offset by higher traffic on CP - combined total at 11,758 and 2% below the trailing 30-day average.
- On a net basis, the decline in loads on wheels reflects lower volumes in the Prince Rupert and E. Canada corridors offset by higher volumes in the Vancouver, Thunder Bay and USA/MEX corridors.
- CN volumes fell 2% (-122) overnight, with lower volumes across all corridors other than Vancouver. System wide CN loads on wheels currently at 6,113 and 3% below the trailing 30-day average.
- CP volumes increased 3% (+133) overnight, driven by an increase in volumes across all corridors - Vancouver, Thunder Bay, USA/MEX and E. Canada. CP system wide loads on wheels currently at 5,379 and in line with the trailing 30-day average.
- Vancouver presently at 7,430, rose for the third consecutive day, up 2% (+142) overnight, now 2% above the trailing 30-day average.
- The Prince Rupert pipeline now at 1,628, decreased significantly by 12% (-216) overnight, and in line with the trailing 30 day-average.
- Thunder Bay volumes gained 6% (+67) overnight - currently at 1,208 and 30% below the trailing 30-day average, with 75% of traffic moving on CP.

## Hopper Car Rationing

- CN rationed 234 hopper cars in week 20.

## Loads Not Moving

- **The count of cars not moving for 48+ hours fell 10% (-485) overnight, reflecting lower counts on both CN and CP. Idle car counts now at 4,607 and 30% above the trailing 30-day average.**
- CN
  - **The count of idle cars for 48+ hours declined 6% (-144) overnight - presently at 2,408 cars.**
  - The number of cars idle for 4+ days decreased 14% (-182) overnight - now at 1,141 cars.
  - The count of cars not moving for 7+ days decreased 9% (-13) overnight - currently at 135 cars.
  - Vancouver represents 55% of all idle cars.
  - In total 31% of all idle cars are dwelling at origin locations.
- CP
  - **CP idle car counts for 48+ hours fell 13% (-341) overnight - now at 2,199 cars.**
  - The number of cars idle for 4+ days declined 23% (-309) overnight - now at 1,020 cars.
  - The number of cars idle for 7+ days decreased 33% (-88) overnight - now at 182 cars.

- Vancouver accounts for 64% of all idle cars.
- In total 47% of all idle cars are dwelling at origin locations.

### **Port Performance**

- CN and CP reported a total of 1,261 cars unloaded at the three major ports, now 14% above the trailing 30-day average. Three days in Week 23 unloads now ahead of last week's pace by 1,150 unloads, reflecting higher unloads across all three major ports - Vancouver, Thunder Bay and Prince Rupert.
- Vancouver
  - 1,000 unloads reported by CN and CP at the Port of Vancouver; CN - 527 and CP - 473. Three days in Week 23 unloads are tracking ahead of last week's performance by 900 unloads.
  - There are more than 1,550 cars on site at Vancouver with less than 550 cars arriving at the port in the last 24 hours.
  - CN and CP have 1,350 cars in British Columbia en route to Vancouver, with more than 800 cars at Kamloops and west, and 74% of traffic moving on CN.
- Prince Rupert
  - Prince Rupert reported 216 unloads, now ahead of last week's unloads after three days by about 150 unloads.
  - Loads on wheels now above 1,000 cars - currently at 1,628 cars.
  - There are nearly 600 cars west of Jasper en route to Prince Rupert.
  - There are nearly 450 cars on site at Prince Rupert with 100 cars arriving at the port in the last 24 hours. Given the structure of the pipeline, there appears to be sufficient cars available to support unloads in the next few days.
- Thunder Bay
  - 45 unloads were reported at Thunder Bay yesterday. Three days in Week 23 unloads are tracking ahead of last week's pace by more than 100 unloads.
  - There are 900 cars on site at Thunder Bay with 50 cars arriving at the port in the prior 24 hours.
  - There are less than 150 cars en route to Thunder Bay from Winnipeg and east. Cars on hand and those en route should support unloads for the balance of the week.

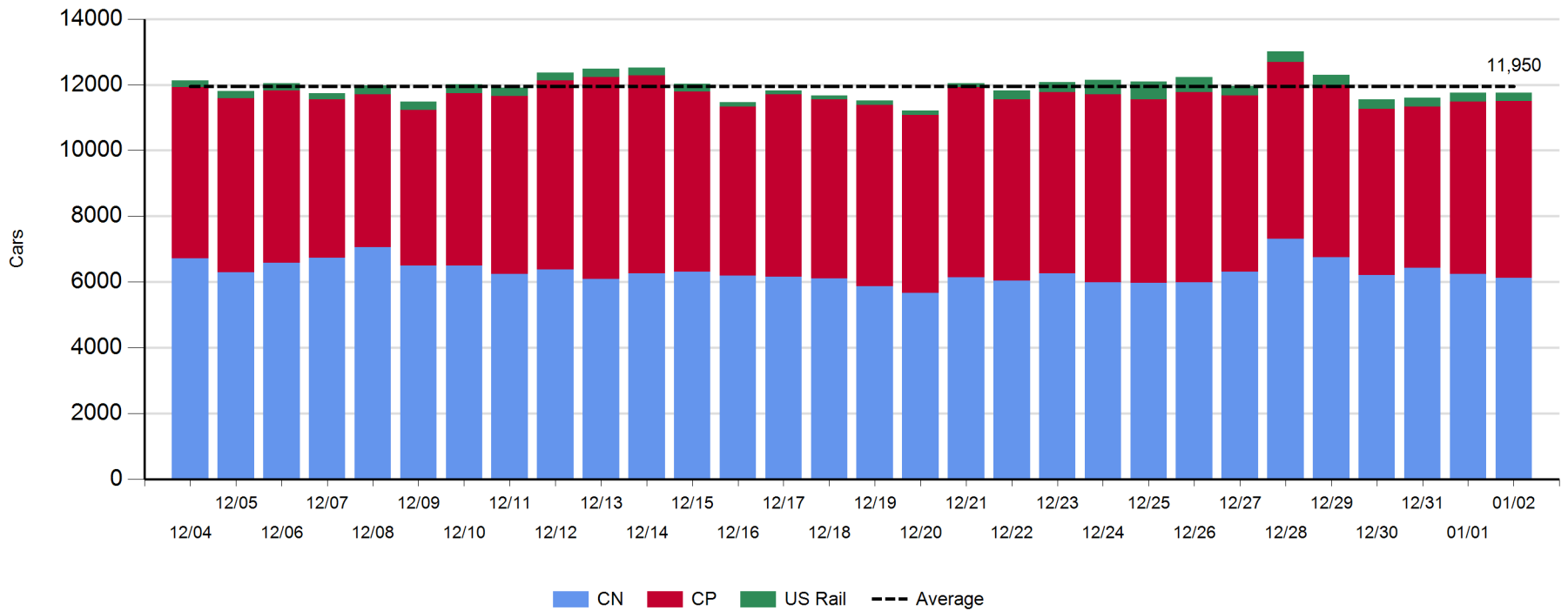
**Daily Loads on Wheels - 1/2/2019**

	E Canada	Prince Rupert	Thunder Bay	USA/MEX	Vancouver	Total
CN	446	1,628	304	153	3,582	6,113
CP	378		904	303	3,794	5,379
Short Line					54	54
US Rail				212		212
	824	1,628	1,208	668	7,430	11,758

**Change in Loads on Wheels - Prior 24 Hours**

	E Canada	Prince Rupert	Thunder Bay	USA/MEX	Vancouver	Total
CN	-24	-216	0	-1	119	-122
CP	20		67	19	27	133
Short Line	-3				-4	-7
US Rail				-6		-6
	-7	-216	67	12	142	-2

**Loads on Wheels - Prior 30 Days**

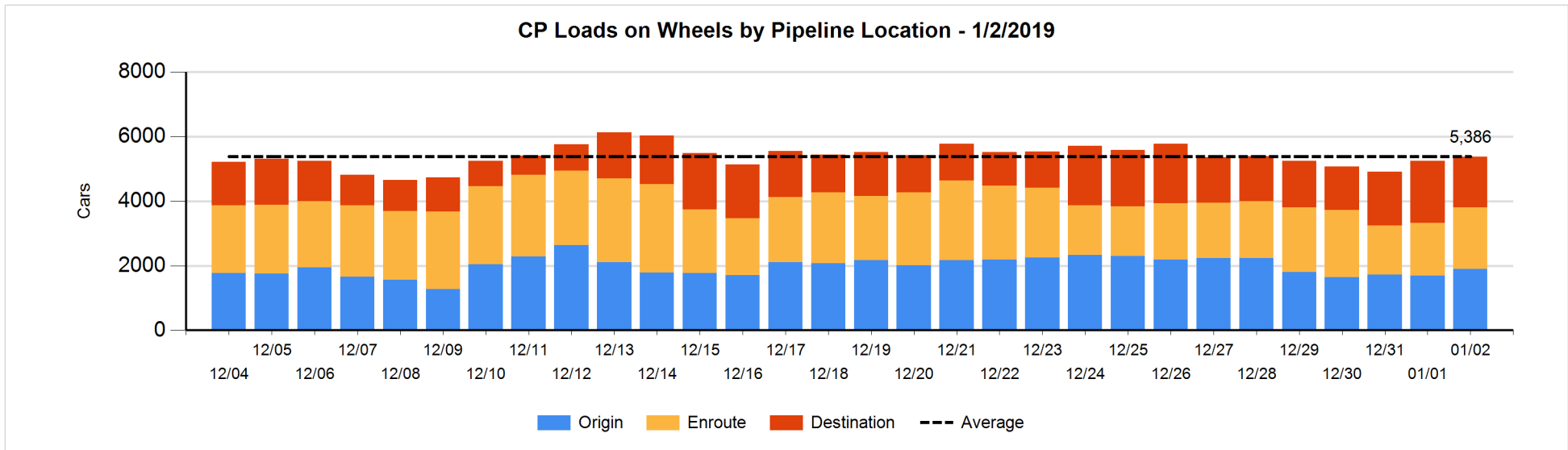
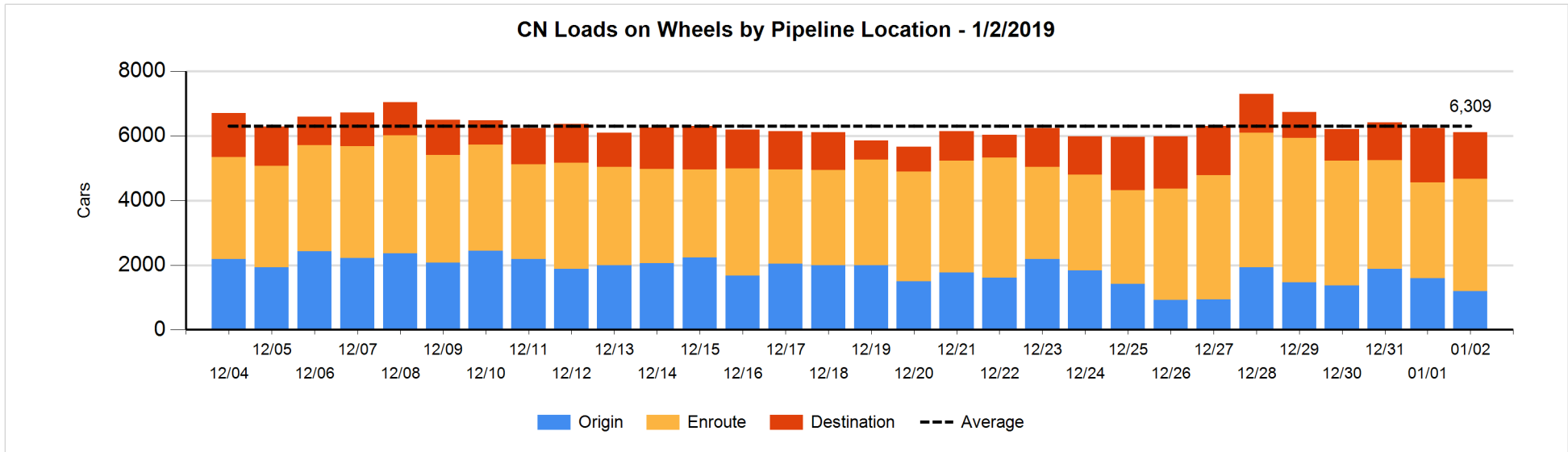


**Daily Loads on Wheels By Pipeline Location - 1/2/2019**

	E Canada	Prince Rupert	Thunder Bay	USA/MEX	Vancouver	Total
CN						
Origin	2	156		6	1,026	1,190
Enroute	384	1,035	12	87	1,961	3,479
Destination	60	437	292	60	595	1,444
	446	1,628	304	153	3,582	6,113
CP						
Origin	138		168	53	1,546	1,905
Enroute	240		126	217	1,321	1,904
Destination			610	33	927	1,570
	378		904	303	3,794	5,379
US Rail / Short Line						
Origin						
Enroute				161		161
Destination				51	54	105
				212	54	266

**Change in Daily Loads on Wheels By Pipeline Location - Prior 24 Hours**

	E Canada	Prince Rupert	Thunder Bay	USA/MEX	Vancouver	Total
CN						
Origin	0	-407		5	0	-402
Enroute	4	313	0	-29	226	514
Destination	-28	-122	0	23	-107	-234
	-24	-216	0	-1	119	-122
CP						
Origin	-85		112	50	133	210
Enroute	105		-49	-59	271	268
Destination			4	28	-377	-345
	20		67	19	27	133
US Rail / Short Line						
Origin						
Enroute				6		6
Destination	-3			-12	-4	-19
	-3			-6	-4	-13

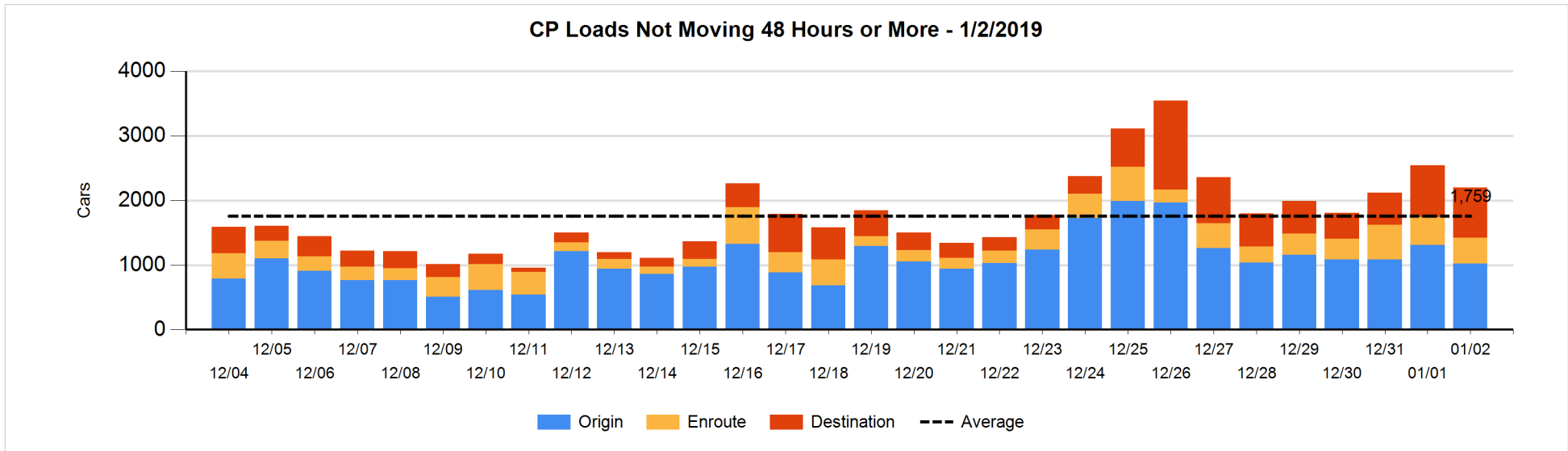
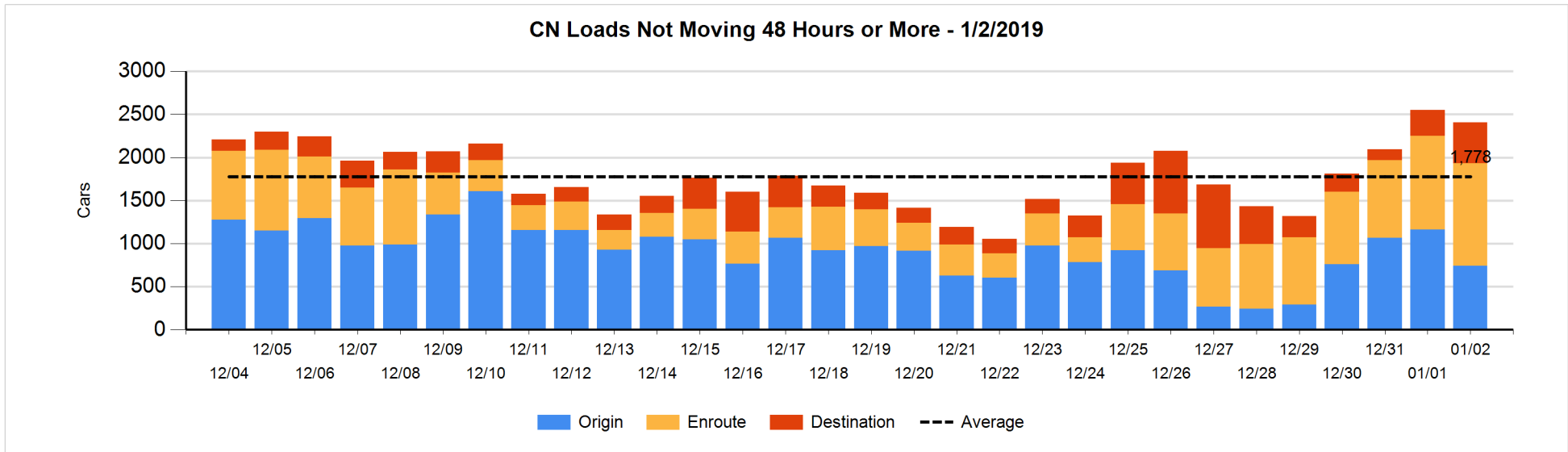


**Loads Not Moving 48 Hours or More - 1/2/2019**

	E Canada	Prince Rupert	Thunder Bay	USA/MEX	Vancouver	Total
CN						
Origin	2	154			585	741
Enroute	4	514	1	8	666	1193
Destination	7	147	210	30	80	474
	13	815	211	38	1331	2408
CP						
Origin	111		56	2	855	1024
Enroute	4		2	129	264	399
Destination			489	1	286	776
	115		547	132	1405	2199
US Rail / Short Line						
Origin						
Enroute				74		74
Destination				39	31	70
				113	31	144

**Change in Loads Not Moving 48 Hours or More - 1/2/2019**

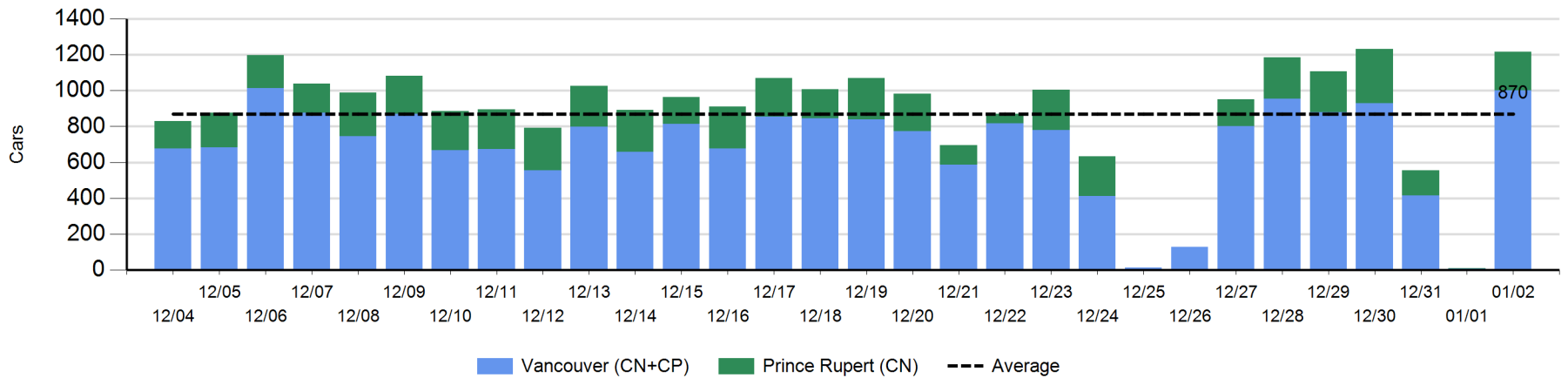
	E Canada	Prince Rupert	Thunder Bay	USA/MEX	Vancouver	Total
CN						
Origin	0	-204			-218	-422
Enroute	-2	-2	-2	2	110	106
Destination	-12	146	151	9	-122	172
	-14	-60	149	11	-230	-144
CP						
Origin	1		55	2	-344	-286
Enroute	-7		-123	23	70	-37
Destination			-110	0	92	-18
	-6		-178	25	-182	-341
US Rail / Short Line						
Origin						
Enroute				5		5
Destination	-3			-5	-3	-11
	-3			0	-3	-6



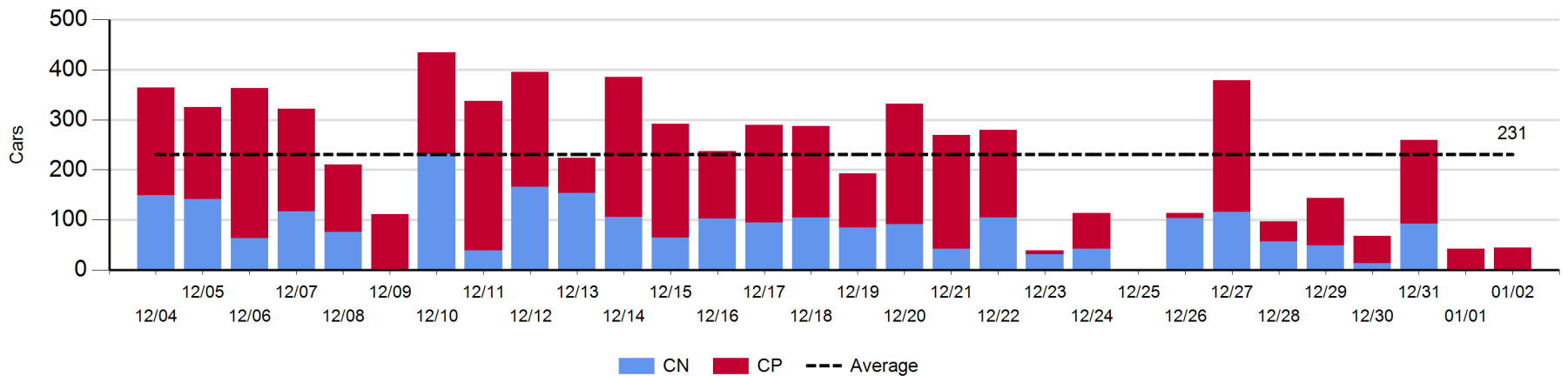
**Port Unloads - 1/2/2019**

	Prince Rupert	Vancouver	West Coast Total	Thunder Bay	Total
CN	216	527	743		743
CP		473	473	45	518
	216	1,000	1,216	45	1,261

**West Coast Port Unloads - Prior 30 Days**



**Thunder Bay Port Unloads - Prior 30 Days**





**Port Terminal Status**

**Vancouver**

Daily Activity for 1/2/2019

	Cars Arrived	Cars Received in Interchange	Cars Delivered in Interchange	Cars Placed for Unloading	Loads on Wheels at Destination As of 1/2/2019
CN	244	170		375	595
CP	287		187	261	927
SRY		17		12	54

**Port Unloads**

	01/02	01/01	Week To Date	Last Week
CN	527	6	758	2,036
CP	473	4	667	2,081
SRY	21		36	37

**Age Profile of Loaded Cars Waiting Placement for Unloading**

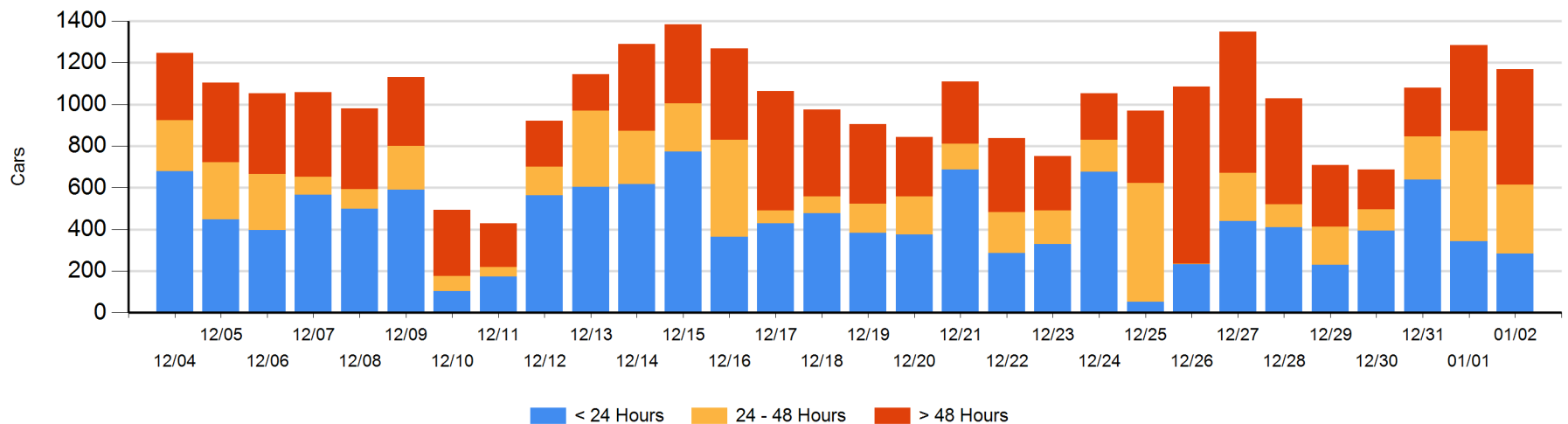
**Today**

	< 24 Hrs	24 - 48 Hrs	> 48-72 Hrs	> 72 Hrs	Total On Hand
CN	39	103	2	141	285
CP	245	228	265	147	885
SRY					0

**Change in Last 24 Hours**

	< 24 Hrs	24-48 Hrs	48 - 72 Hrs	> 72 Hrs
CN	-77	-6	-103	83
CP	17	-191	185	-23
SRY				

**Loaded Cars on Hand Vancouver Waiting for Placement - Last 30 Days All Railways**



**Port Terminal Status**

**Prince Rupert**

**Daily Activity for 1/2/2019**

	Cars Arrived	Cars Received in Interchange	Cars Delivered in Interchange	Cars Placed for Unloading	Loads on Wheels at Destination As of 1/2/2019
CN	95				437

**Port Unloads**

	01/02	01/01	Week To Date	Last Week
CN	216	1	357	1,131

**Age Profile of Loaded Cars Waiting Placement for Unloading**

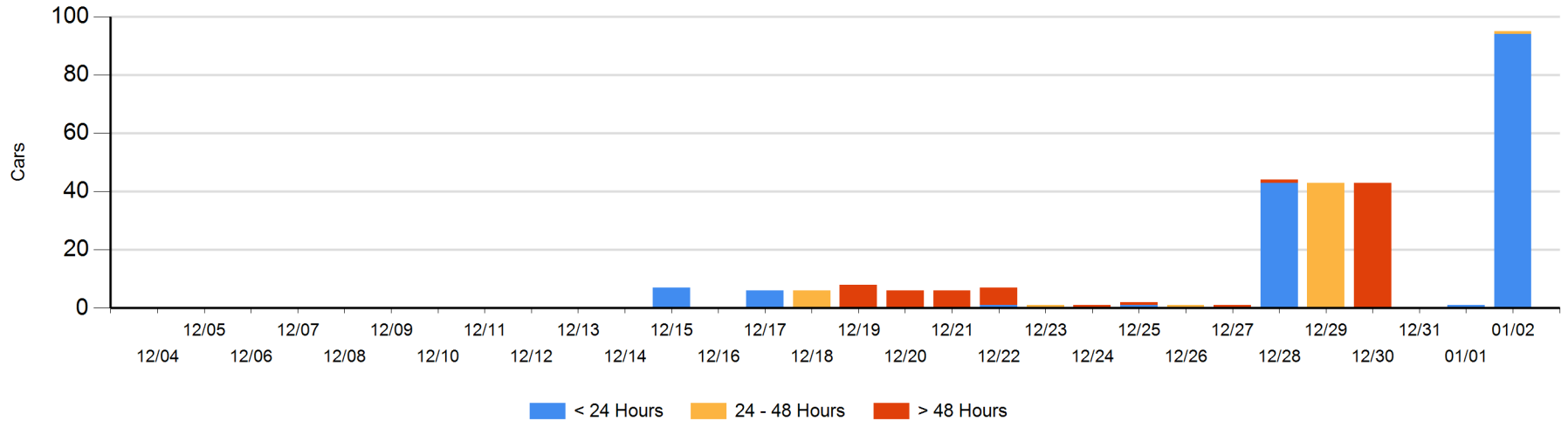
**Today**

	< 24 Hrs	24 - 48 Hrs	> 48-72 Hrs	> 72 Hrs	Total On Hand
CN	94	1			95

**Change in Last 24 Hours**

	< 24 Hrs	24-48 Hrs	48 - 72 Hrs	> 72 Hrs
CN	93	1		

**Loaded Cars on Hand Prince Rupert Waiting for Placement - Last 30 Days All Railways**



**Port Terminal Status**

**Thunder Bay**

Daily Activity for 1/2/2019

	Cars Arrived	Cars Received in Interchange	Cars Delivered in Interchange	Cars Placed for Unloading	Loads on Wheels at Destination As of 1/2/2019
CN				1	292
CP	49			70	610

**Port Unloads**

	01/02	01/01	Week To Date	Last Week
CN			93	384
CP	45	43	254	533

**Age Profile of Loaded Cars Waiting Placement for Unloading**

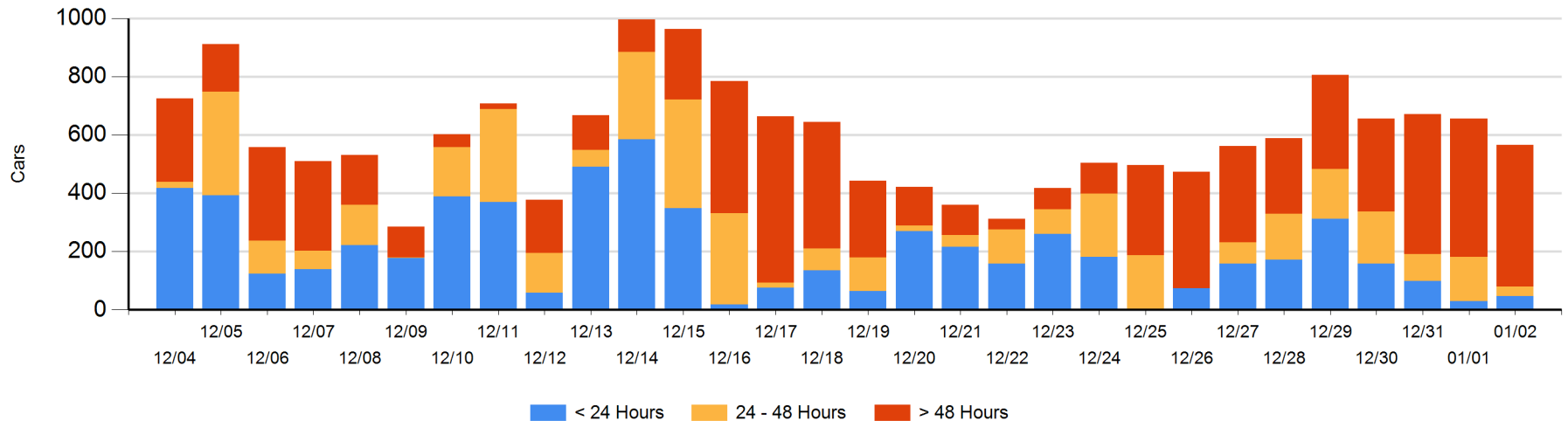
**Today**

	< 24 Hrs	24 - 48 Hrs	> 48-72 Hrs	> 72 Hrs	Total On Hand
CN		30	152	6	188
CP	47	2		329	378

**Change in Last 24 Hours**

	< 24 Hrs	24-48 Hrs	48 - 72 Hrs	> 72 Hrs
CN	-30	-122	152	-1
CP	47	2	-55	-84

**Loaded Cars on Hand Thunder Bay Waiting for Placement - Last 30 Days All Railways**



## Measurement Definitions

Loads on Wheels	<p>Count of loaded rail cars including all rail cars that have been released loaded at origin and have not been reported by the railway as unloaded at destination.</p> <p>Counts include all rail cars (hopper cars and boxcars) moving within a pipeline.</p>
Loads Not Moving	<p>Loaded rail cars for which the railways have not reported a movement event for 48 hours or more whether the rail car is at origin, enroute or at destination.</p>
Port Unloads	<p>Count of rail cars reported by railways as unloaded at the western port destinations of Vancouver, Prince Rupert and Thunder Bay.</p> <p>Unload counts include all rail cars (hopper cars and boxcars) unloaded by all receivers including major port terminals, transloaders and other receivers.</p>
Cars Arrived	<p>Count of rail cars reported as arrived at the destination railway terminal.</p>
Cars Received in Interchange	<p>Count of rail cars received in interchange by each railway within a destination railway terminal. Interchange activity is tracked for the Vancouver and Thunder Bay pipelines as applicable.</p>
Cars Delivered in Interchange	<p>Count of rail cars delivered in interchange by each railway within a destination railway terminal. Interchange activity is tracked for the Vancouver and Thunder Bay pipelines as applicable.</p>
Cars Placed for Unloading	<p>Count of rail cars reported by the railways as placed loaded at the receiver's facility for unloading.</p>
Loads on Wheels at Destination	<p>Count of rail cars that remain under load within the destination railway terminal including rail cars that have been reported as placed for unloading but not yet reported as unloaded.</p>
Waiting Placement for Unloading	<p>Count of rail cars that have been reported as arrived at the destination railway terminal but not reported as placed for unloading by the railway.</p> <p>For the Ports of Vancouver, Prince Rupert and Thunder Bay the count of rail cars waiting placement for unloading is categorized by age – i.e. the elapsed time from arrival at destination to the current report date.</p>