

## SPEED READ

- Loads on wheels fell overnight, reflecting a decline in CN volumes offset by higher CP volumes. On a net basis, volumes declined due to reduced traffic across all corridors other than Thunder Bay.
- Network fluidity improved overnight, led by a decline in idle car counts on CN by 26% (-377) offset by a rise in idle car counts on CP by 2% (+49). The total count of cars for 4+ days on both railways rose 6% (+107) overnight - currently at 1,903 cars.
- Week 23 unloads concluded ahead of prior week's performance by 450 unloads, reflecting improved week over week performance across all three major ports - Vancouver, Thunder Bay and Prince Rupert.

---

## Loads on Wheels

- Loads on wheels fell 4% (-524) overnight, due to lower volumes on CN offset by higher volumes on CP - combined total at 11,471 and 4% below the trailing 30-day average.
- On a net basis, the decline in loads on wheels reflects lower traffic across all corridors other than Thunder Bay.
- CN volumes declined significantly by 10% (-682) overnight, with lower volumes across all corridors - Vancouver, Thunder Bay, Prince Rupert, USA/MEX and E. Canada. System wide CN loads on wheels currently at 5,967 and 5% below the trailing 30-day average.
- CP volumes increased 3% (+153) overnight, driven by a rise in traffic in the Vancouver and Thunder Bay corridors offset by a decline in volumes in the E. Canada and USA/MEX corridors. CP system wide loads on wheels currently at 5,325 and 1% below the trailing 30-day average.
- Vancouver now at 7,375, declined 5% (-359) overnight, now 1% above the trailing 30-day average.
- The Prince Rupert pipeline now at 1,726, decreased significantly by 12% (-227) overnight, and 4% above the trailing 30-day average.
- Thunder Bay volumes increased significantly by 11% (+74) overnight - presently at 747 and 53% below the trailing 30-day average, with 79% of traffic moving on CP.

## Hopper Car Rationing

- CN rationed 286 hopper cars in week 21.
- CN rationed 104 hopper cars in week 22.

## Loads Not Moving

- **The count of cars not moving for 48+ hours declined 10% (-328) overnight, reflecting reduced counts on CN offset by higher counts on CP. Idle car counts presently at 3,092 and 12% below the trailing 30 day-average.**
- CN
  - **The count of idle cars for 48+ hours fell 26% (-377) overnight - presently at 1,054 cars.**
  - The number of cars idle for 4+ days fell 20% (-161) overnight and have now decreased for the fifth consecutive day - currently at 662 cars.
  - The count of cars not moving for 7+ days fell 37% (-91) overnight - presently at 154 cars.
  - Vancouver represents 56% of all idle cars.
  - In total 35% of all idle cars are dwelling at origin locations.
- CP
  - **CP idle car counts for 48+ hours increased 2% (+49) overnight - presently at 2,038 cars.**
  - The number of cars idle for 4+ days increased 28% (+268) overnight - currently at 1,241 cars.

- The number of cars idle for 7+ days rose 4% (+18) overnight - presently at 436 cars.
- Vancouver accounts for 78% of all idle cars.
- In total 71% of all idle cars are dwelling at origin locations.

### **Port Performance**

- CN and CP reported a total of 962 cars unloaded at the three major ports, now 10% below the trailing 30 day-average. Week 23 unloads concluded ahead of last week's pace by 450 unloads, reflecting higher unloads across all three major ports - Vancouver, Thunder Bay and Prince Rupert.
- Vancouver
  - 708 unloads reported by CN and CP at the Port of Vancouver; CN - 251 and CP - 457. Week 23 unloads ended ahead of last week's performance by around 200 unloads.
  - There are 1,150 cars on site at Vancouver with more than 450 cars arriving at the port in the last 24 hours.
  - CN and CP have more than 1,500 cars in British Columbia en route to Vancouver, with nearly 1,000 cars at Kamloops and west, and 52% of traffic moving on CP.
- Prince Rupert
  - Prince Rupert reported 227 unloads, ended ahead of last week's unloads by more than 100 unloads.
  - Loads on wheels now above 1,000 cars - currently at 1,726 cars.
  - There are 850 cars west of Jasper en route to Prince Rupert.
  - There are more than 250 cars on site at Prince Rupert with 200 cars arriving at the port in the last 24 hours. Given the structure of the pipeline, there appears to be sufficient cars available to support unloads in the next few days.
- Thunder Bay
  - 27 unloads were reported at Thunder Bay yesterday. Week 23 unloads ended ahead of last week's pace by 150 unloads.
  - There are nearly 650 cars on site at Thunder Bay with more than 100 cars arriving at the port in the prior 24 hours.
  - There are 7 cars en route to Thunder Bay from Winnipeg and east. Cars on hand and those en route should support unloads in the next few days.

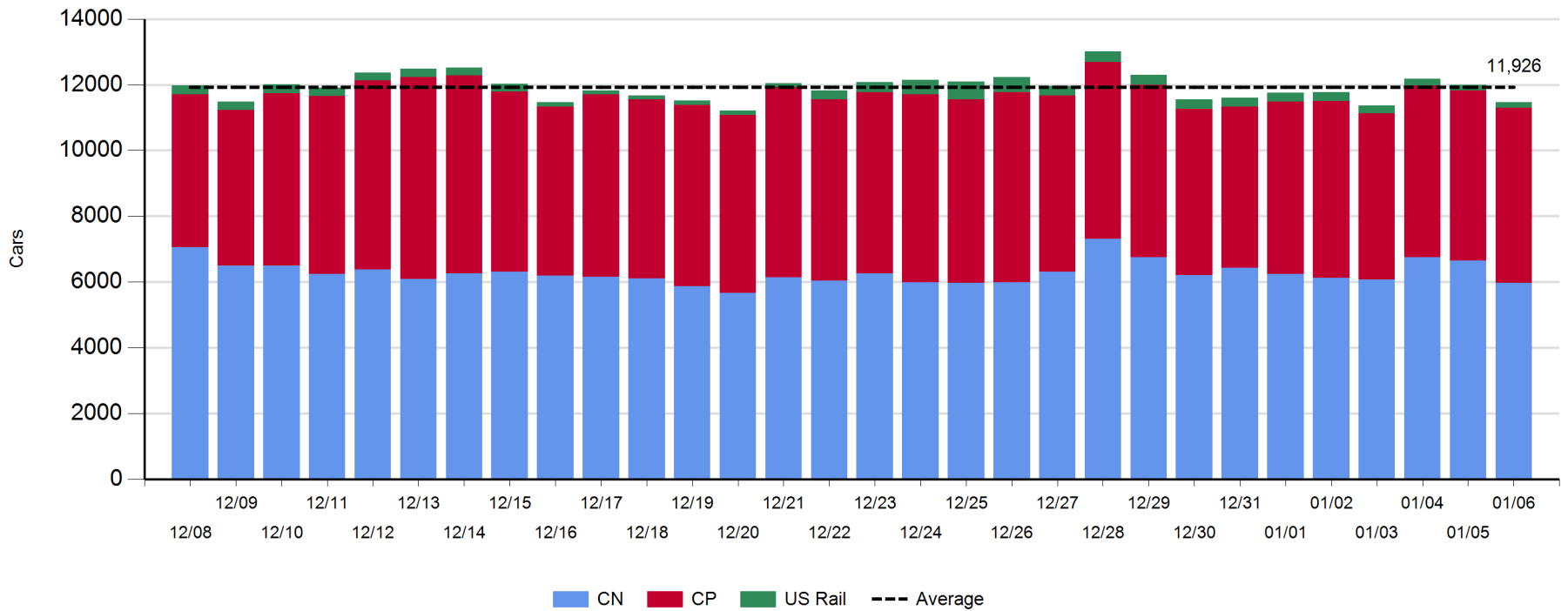
**Daily Loads on Wheels - 1/6/2019**

	E Canada	Prince Rupert	Thunder Bay	USA/MEX	Vancouver	Total
CN	596	1,726	159	139	3,347	5,967
CP	468		588	262	4,007	5,325
Short Line	1				21	22
US Rail				157		157
	1,065	1,726	747	558	7,375	11,471

**Change in Loads on Wheels - Prior 24 Hours**

	E Canada	Prince Rupert	Thunder Bay	USA/MEX	Vancouver	Total
CN	-6	-227	-1	-7	-441	-682
CP	-2		75	-2	82	153
Short Line	0				0	0
US Rail				5		5
	-8	-227	74	-4	-359	-524

**Loads on Wheels - Prior 30 Days**

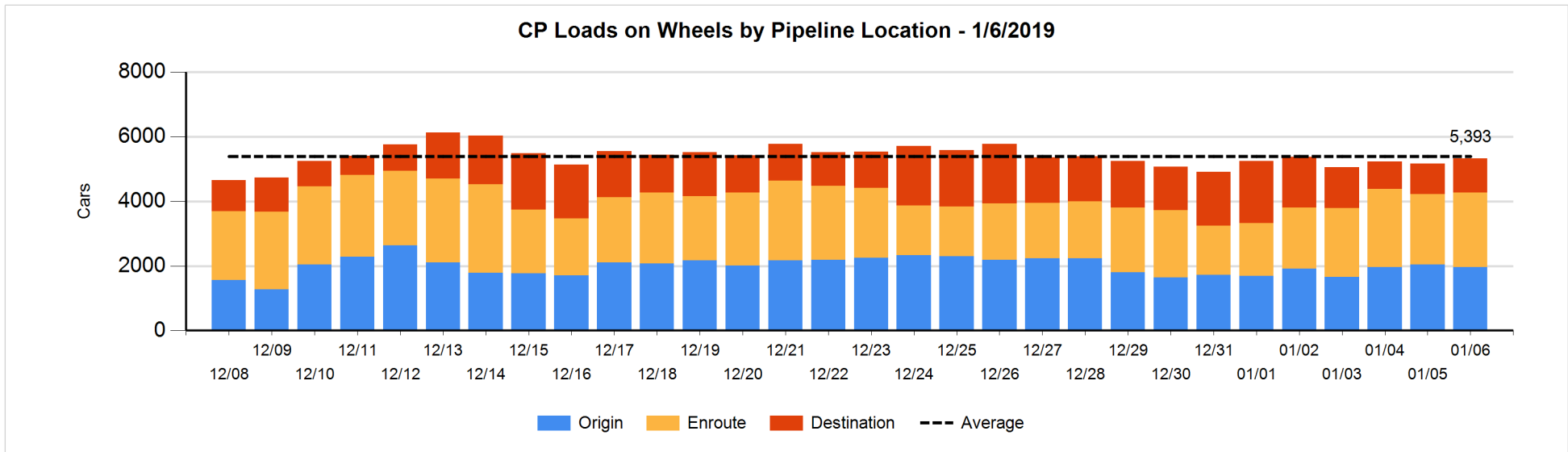
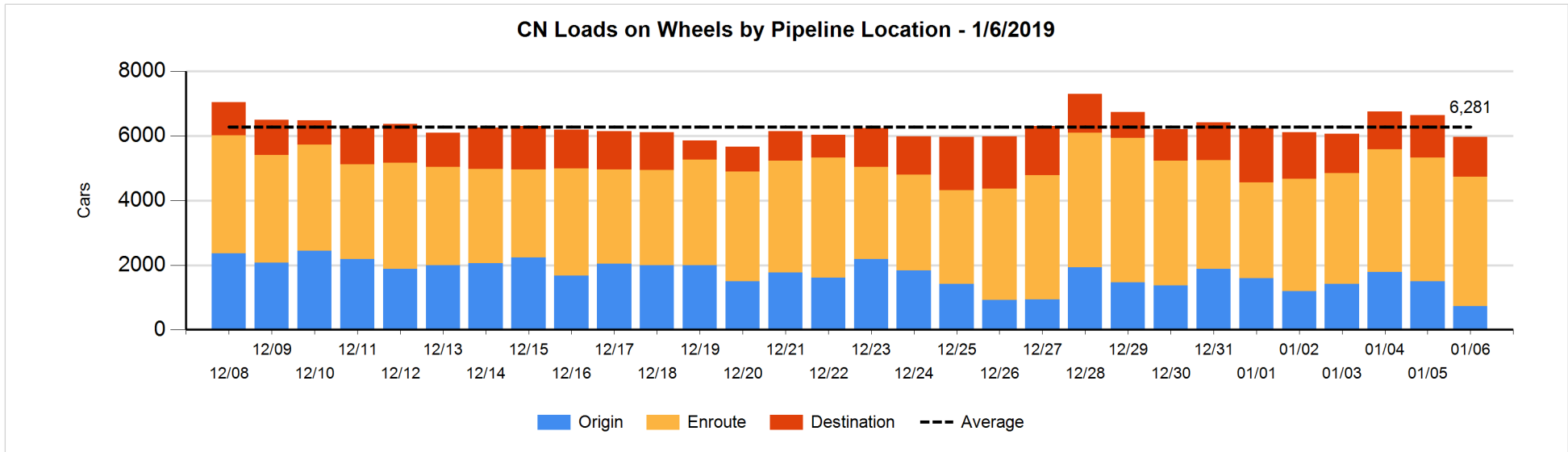


**Daily Loads on Wheels By Pipeline Location - 1/6/2019**

	E Canada	Prince Rupert	Thunder Bay	USA/MEX	Vancouver	Total
CN						
Origin	2	2		10	712	726
Enroute	420	1,463	4	64	2,050	4,001
Destination	174	261	155	65	585	1,240
	596	1,726	159	139	3,347	5,967
CP						
Origin	17		101	71	1,779	1,968
Enroute	423		3	190	1,693	2,309
Destination	28		484	1	535	1,048
	468		588	262	4,007	5,325
US Rail / Short Line						
Origin						
Enroute	1			97		98
Destination				60	21	81
	1			157	21	179

**Change in Daily Loads on Wheels By Pipeline Location - Prior 24 Hours**

	E Canada	Prince Rupert	Thunder Bay	USA/MEX	Vancouver	Total
CN						
Origin	-157	-197		0	-423	-777
Enroute	102	-11	-2	-7	95	177
Destination	49	-19	1	0	-113	-82
	-6	-227	-1	-7	-441	-682
CP						
Origin	-37		101	-3	-135	-74
Enroute	7		-111	2	231	129
Destination	28		85	-1	-14	98
	-2		75	-2	82	153
US Rail / Short Line						
Origin						
Enroute	0			-7		-7
Destination				12	0	12
	0			5	0	5

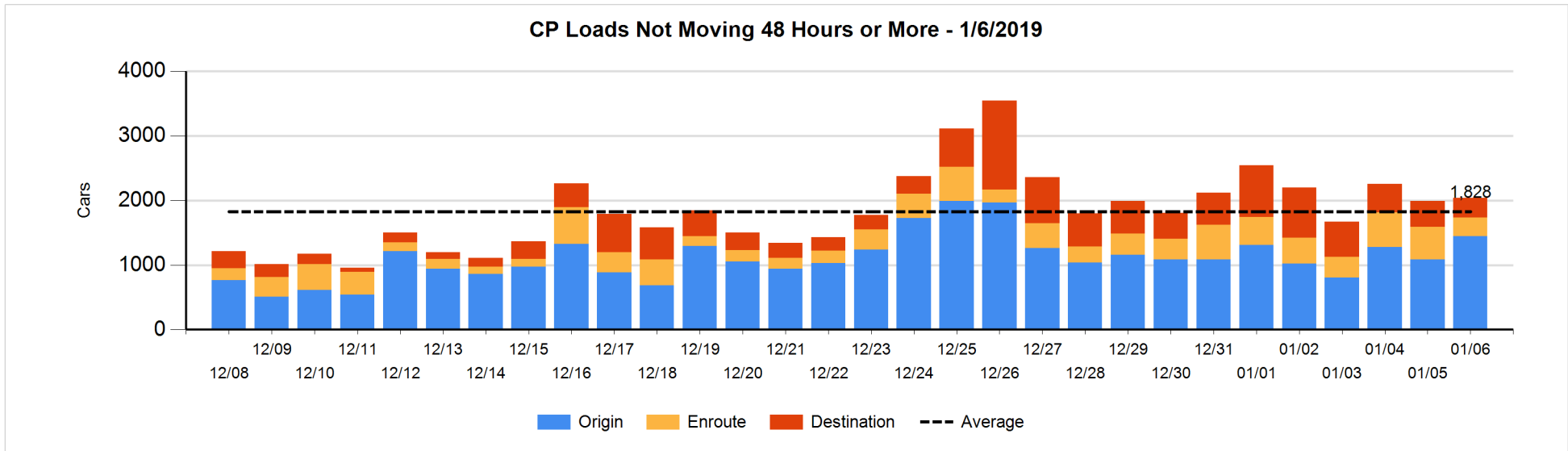
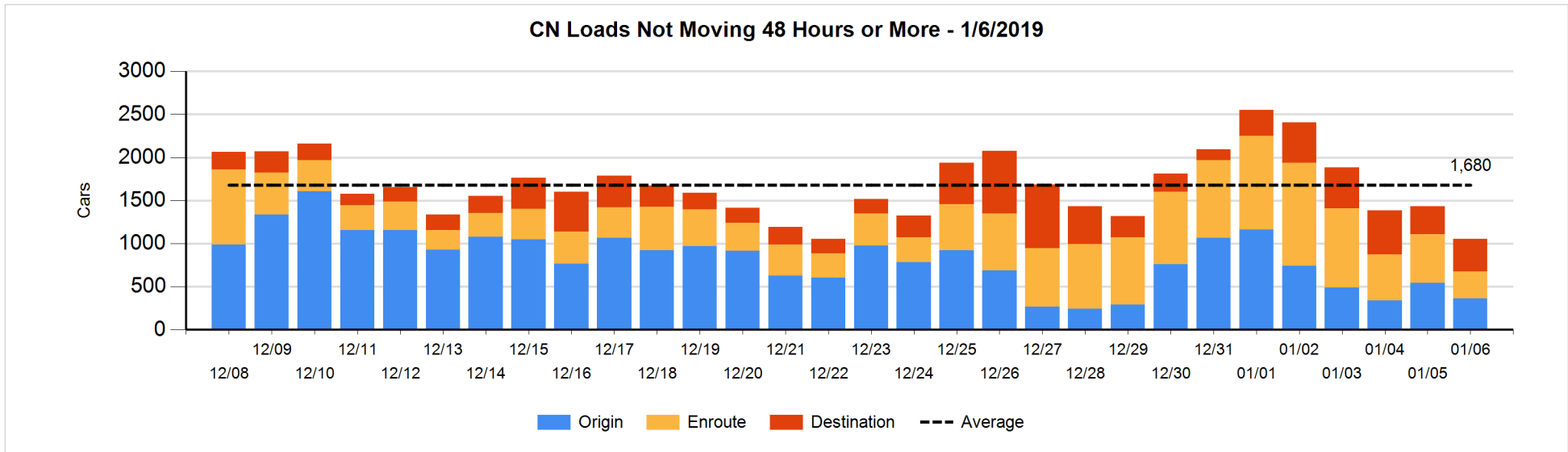


**Loads Not Moving 48 Hours or More - 1/6/2019**

	E Canada	Prince Rupert	Thunder Bay	USA/MEX	Vancouver	Total
<b>CN</b>						
Origin	2	2		10	350	364
Enroute	113	11		19	167	310
Destination	29	104	112	62	73	380
	144	117	112	91	590	1054
<b>CP</b>						
Origin	16			71	1360	1447
Enroute	8		2	103	173	286
Destination			246	1	58	305
	24		248	175	1591	2038
<b>US Rail / Short Line</b>						
Origin						
Enroute				62		62
Destination				37	20	57
				99	20	119

**Change in Loads Not Moving 48 Hours or More - 1/6/2019**

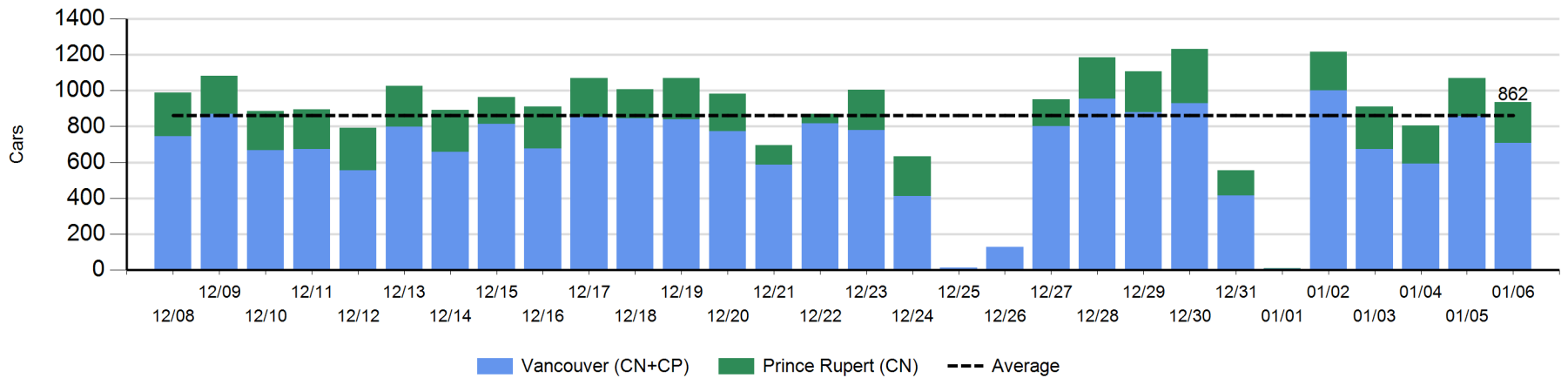
	E Canada	Prince Rupert	Thunder Bay	USA/MEX	Vancouver	Total
<b>CN</b>						
Origin	0	0		9	-186	-177
Enroute	-37	-116		-1	-102	-256
Destination	16	0	52	18	-30	56
	-21	-116	52	26	-318	-377
<b>CP</b>						
Origin	-38			70	333	365
Enroute	-18		0	0	-206	-224
Destination			5	0	-97	-92
	-56		5	70	30	49
<b>US Rail / Short Line</b>						
Origin						
Enroute				-9		-9
Destination				19	12	31
				10	12	22



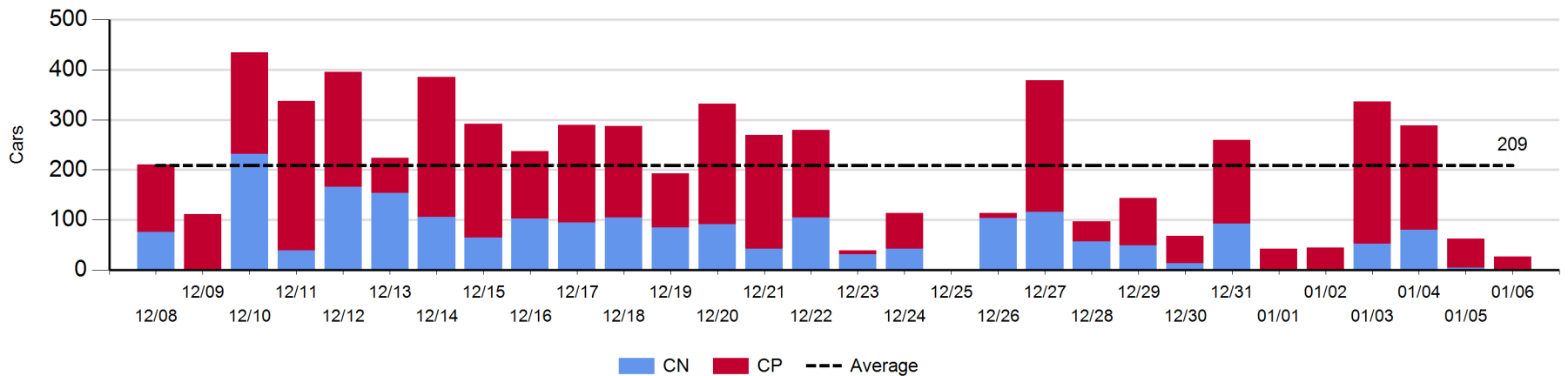
Port Unloads - 1/6/2019

	Prince Rupert	Vancouver	West Coast Total	Thunder Bay	Total
CN	227	251	478	1	479
CP		457	457	26	483
	227	708	935	27	962

West Coast Port Unloads - Prior 30 Days



Thunder Bay Port Unloads - Prior 30 Days





**Port Terminal Status**

**Vancouver**

Daily Activity for 1/6/2019

	Cars Arrived	Cars Received in Interchange	Cars Delivered in Interchange	Cars Placed for Unloading	Loads on Wheels at Destination As of 1/6/2019
CN	144	56	233	289	585
CP	335	233	56	351	535
SRY					21

**Port Unloads**

	01/06	01/05	Week To Date	Last Week
CN	251	559	2,169	2,036
CP	457	298	2,089	2,081
SRY		22	84	37

**Age Profile of Loaded Cars Waiting Placement for Unloading**

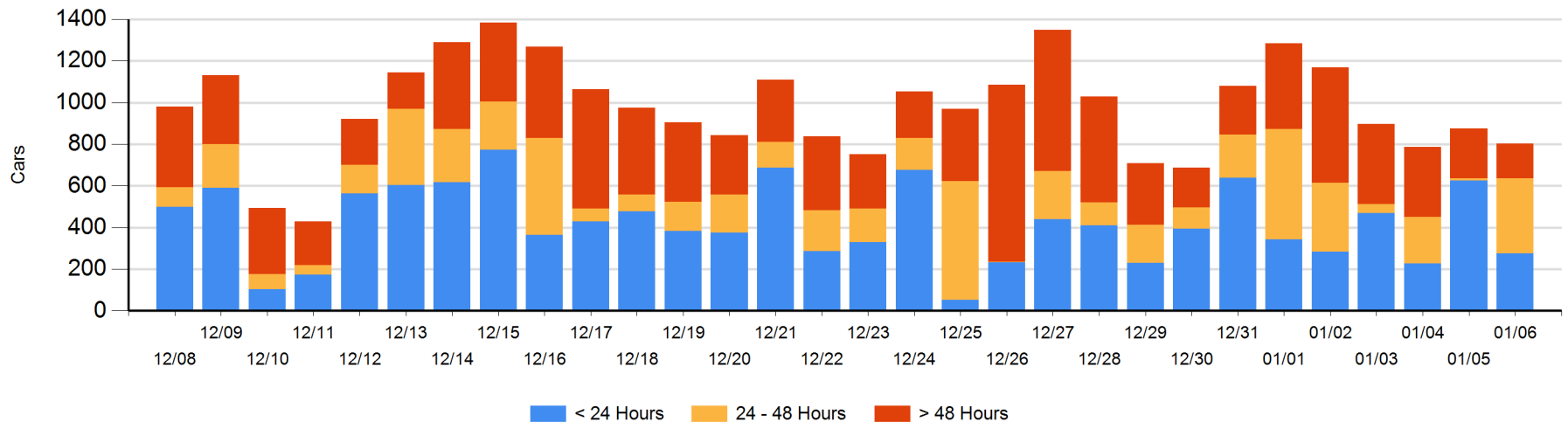
**Today**

	< 24 Hrs	24 - 48 Hrs	> 48-72 Hrs	> 72 Hrs	Total On Hand
CN	42	126	9	93	270
CP	234	233	1	66	534
SRY					0

**Change in Last 24 Hours**

	< 24 Hrs	24-48 Hrs	48 - 72 Hrs	> 72 Hrs
CN	-266	117	-28	-2
CP	-84	232	-15	-25
SRY				

**Loaded Cars on Hand Vancouver Waiting for Placement - Last 30 Days All Railways**



**Port Terminal Status**

**Prince Rupert**

Daily Activity for 1/6/2019

	Cars Arrived	Cars Received in Interchange	Cars Delivered in Interchange	Cars Placed for Unloading	Loads on Wheels at Destination As of 1/6/2019
CN	208			208	261

**Port Unloads**

	01/06	01/05	Week To Date	Last Week
CN	227	213	1,247	1,131

**Age Profile of Loaded Cars Waiting Placement for Unloading**

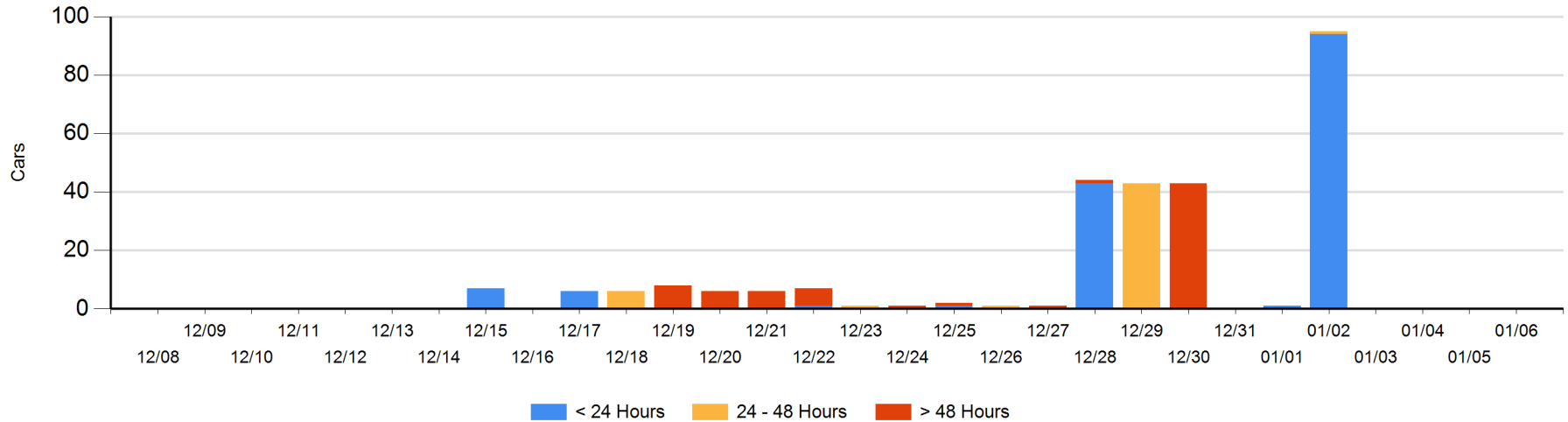
**Today**

	< 24 Hrs	24 - 48 Hrs	> 48-72 Hrs	> 72 Hrs	Total On Hand
CN					0

**Change in Last 24 Hours**

	< 24 Hrs	24-48 Hrs	48 - 72 Hrs	> 72 Hrs
CN				

Loaded Cars on Hand Prince Rupert Waiting for Placement - Last 30 Days All Railways



**Port Terminal Status**

**Thunder Bay**

Daily Activity for 1/6/2019

	Cars Arrived	Cars Received in Interchange	Cars Delivered in Interchange	Cars Placed for Unloading	Loads on Wheels at Destination As of 1/6/2019
CN	2			26	155
CP	111			111	484

**Port Unloads**

	01/06	01/05	Week To Date	Last Week
CN	1	5	232	384
CP	26	57	829	533

**Age Profile of Loaded Cars Waiting Placement for Unloading**

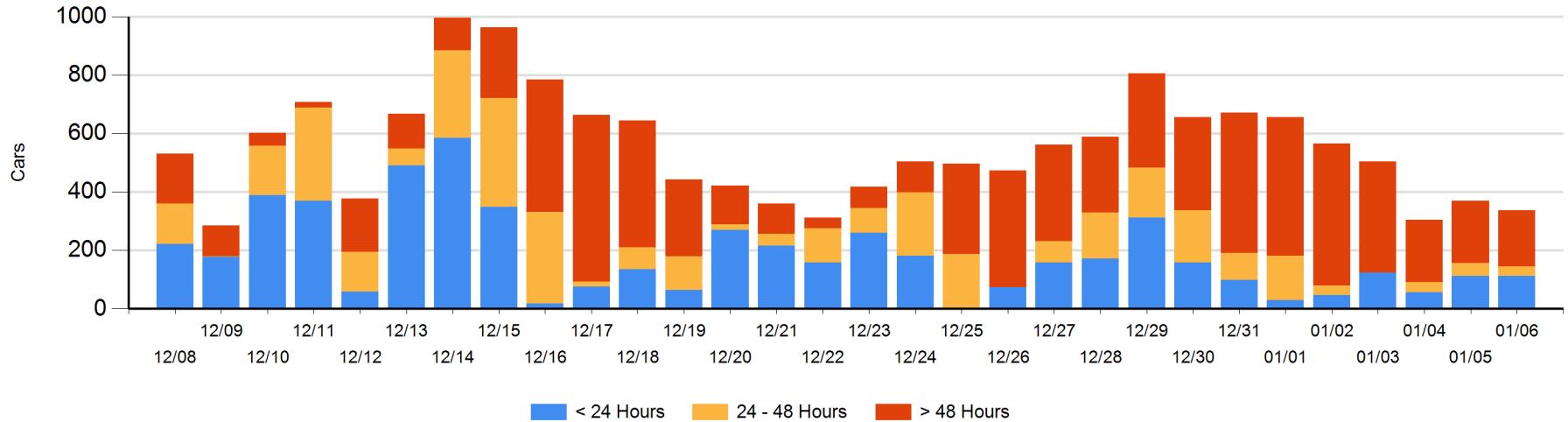
**Today**

	< 24 Hrs	24 - 48 Hrs	> 48-72 Hrs	> 72 Hrs	Total On Hand
CN	2			23	25
CP	111	31	16	155	313

**Change in Last 24 Hours**

	< 24 Hrs	24-48 Hrs	48 - 72 Hrs	> 72 Hrs
CN	2	-1		-28
CP	-1	-13	5	4

**Loaded Cars on Hand Thunder Bay Waiting for Placement - Last 30 Days All Railways**



## Measurement Definitions

Loads on Wheels	<p>Count of loaded rail cars including all rail cars that have been released loaded at origin and have not been reported by the railway as unloaded at destination.</p> <p>Counts include all rail cars (hopper cars and boxcars) moving within a pipeline.</p>
Loads Not Moving	<p>Loaded rail cars for which the railways have not reported a movement event for 48 hours or more whether the rail car is at origin, enroute or at destination.</p>
Port Unloads	<p>Count of rail cars reported by railways as unloaded at the western port destinations of Vancouver, Prince Rupert and Thunder Bay.</p> <p>Unload counts include all rail cars (hopper cars and boxcars) unloaded by all receivers including major port terminals, transloaders and other receivers.</p>
Cars Arrived	<p>Count of rail cars reported as arrived at the destination railway terminal.</p>
Cars Received in Interchange	<p>Count of rail cars received in interchange by each railway within a destination railway terminal. Interchange activity is tracked for the Vancouver and Thunder Bay pipelines as applicable.</p>
Cars Delivered in Interchange	<p>Count of rail cars delivered in interchange by each railway within a destination railway terminal. Interchange activity is tracked for the Vancouver and Thunder Bay pipelines as applicable.</p>
Cars Placed for Unloading	<p>Count of rail cars reported by the railways as placed loaded at the receiver's facility for unloading.</p>
Loads on Wheels at Destination	<p>Count of rail cars that remain under load within the destination railway terminal including rail cars that have been reported as placed for unloading but not yet reported as unloaded.</p>
Waiting Placement for Unloading	<p>Count of rail cars that have been reported as arrived at the destination railway terminal but not reported as placed for unloading by the railway.</p> <p>For the Ports of Vancouver, Prince Rupert and Thunder Bay the count of rail cars waiting placement for unloading is categorized by age – i.e. the elapsed time from arrival at destination to the current report date.</p>