

## SPEED READ

- Loads on wheels decreased overnight, marking a decline on both CN and CP volumes. On a net basis, volumes decreased due to lower traffic across all corridors other than E. Canada.
- Network fluidity improved overnight, led by a decline in idle car counts on both CN and CP by 25% (-207) and 9% (-152), respectively. The total count of cars for 4+ days on both railways decreased for the third consecutive day, down 14% (-204) overnight - now at 1,218 cars.
- Three days in Week 24 unloads now ahead of prior week's performance by fewer than 1,700 unloads, marking improved week over week performance across all three major ports - Vancouver, Thunder Bay and Prince Rupert.

---

## Loads on Wheels

- Loads on wheels decreased 5% (-492) overnight and have now decreased for the fifth consecutive day, due to lower traffic on both CN and CP - combined total at 9,919, the lowest seen in the last 30 days, and 16% below the trailing 30-day average.
- On a net basis, the decline in loads on wheels reflects reduced traffic across all corridors other than E. Canada.
- CN volumes decreased for the fifth consecutive day, down 4% (-189) overnight, with lower volumes across all corridors other than E. Canada. System wide CN loads on wheels now at 4,853, the lowest seen in the last 30 days, and 21% below the trailing 30-day average.
- CP volumes decreased 6% (-312) overnight, driven by a decline in volumes across all corridors - Vancouver, Thunder Bay, USA/MEX and E. Canada. CP system wide loads on wheels now at 4,904, the lowest seen in the last 30 days, and 10% below the trailing 30-day average.
- Vancouver currently at 6,564, the lowest seen in the last 30 days, decreased 4% (-280) overnight and have now decreased for the fifth consecutive day, now 9% below the trailing 30-day average.
- The Prince Rupert pipeline currently at 1,286, decreased for the fifth consecutive day, down 8% (-118) overnight, and 22% below the trailing 30 day-average.
- Thunder Bay volumes decreased for the third consecutive day, down 23% (-125) overnight - now at 430, the lowest seen in the last 30 days, and 70% below the trailing 30-day average, with 93% of traffic moving on CP.

## Hopper Car Rationing

- CN rationed 286 hopper cars in week 21.
- CN rationed 104 hopper cars in week 22.

## Loads Not Moving

- **The count of cars not moving for 48+ hours decreased for the fifth consecutive day, down 14% (-359) overnight, reflecting reduced counts on both CN and CP. Idle car counts presently at 2,161, the lowest seen in the last 30 days, and 37% below the trailing 30 day-average.**
- CN
  - **The count of idle cars for 48+ hours decreased 25% (-207) overnight - currently at 632 cars.**
  - The number of cars idle for 4+ days fell 30% (-127) overnight - presently at 303 cars.
  - The count of cars not moving for 7+ days decreased 27% (-53) overnight - currently at 142 cars.
  - Vancouver represents 48% of all idle cars.
  - In total 25% of all idle cars are dwelling at origin locations.
- CP
  - **CP idle car counts for 48+ hours declined 9% (-152) overnight - now at 1,529 cars.**

- The number of cars idle for 4+ days decreased 8% (-77) overnight and have now decreased for the third consecutive day - presently at 915 cars.
- The number of cars idle for 7+ days increased significantly by 68% (+164) overnight - presently at 405 cars.
- Vancouver accounts for 79% of all idle cars.
- In total 69% of all idle cars are dwelling at origin locations.

### **Port Performance**

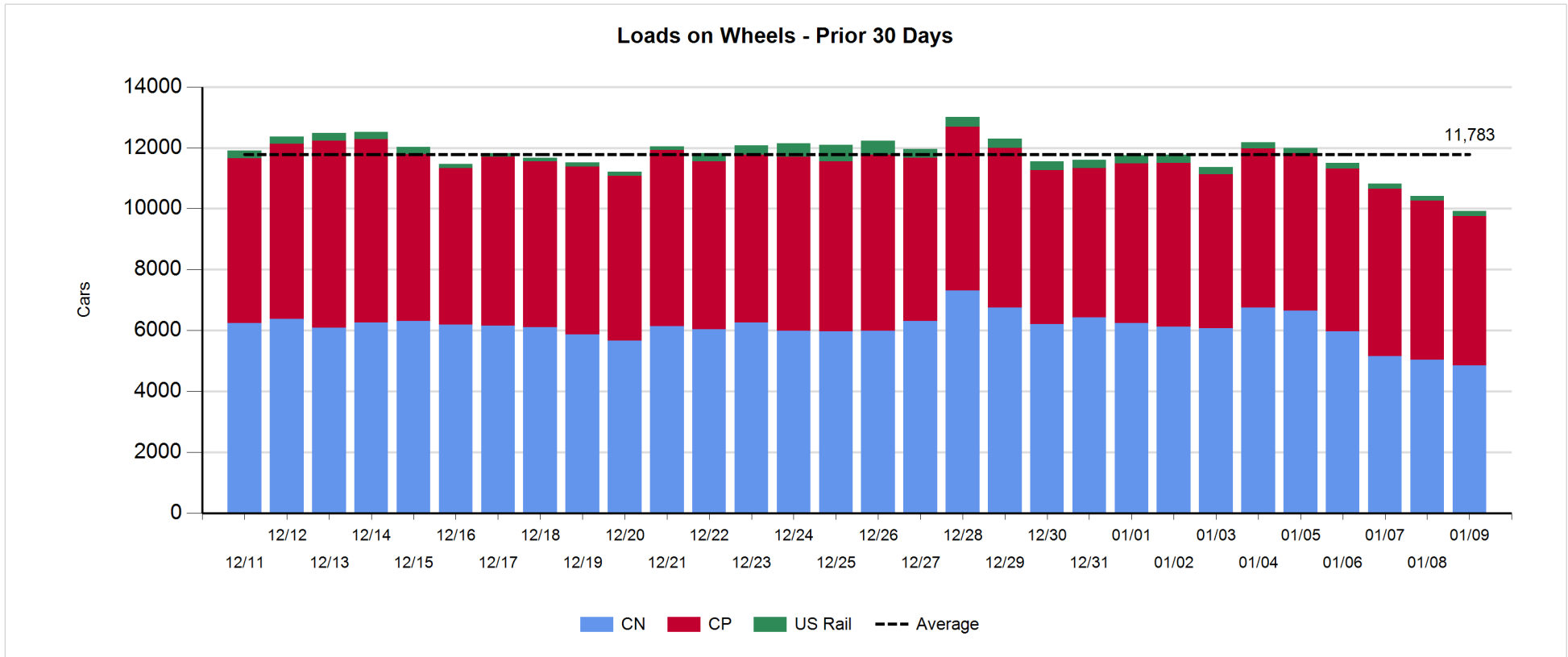
- CN and CP reported a total of 1,342 cars unloaded at the three major ports, now 25% above the trailing 30-day average. Three days in Week 24 unloads now ahead of last week's pace by around 1,700 unloads, marking higher unloads across all three major ports - Vancouver, Thunder Bay and Prince Rupert.
- Vancouver
  - 966 unloads reported by CN and CP at the Port of Vancouver; CN - 510 and CP - 456. Three days in Week 24 unloads are tracking ahead of last week's performance by 1,150 unloads.
  - There are more than 1,550 cars on site at Vancouver with 850 cars arriving at the port in the last 24 hours.
  - CN and CP have 1,450 cars in British Columbia en route to Vancouver, with more than 600 cars at Kamloops and west, and 65% of traffic moving on CN.
- Prince Rupert
  - Prince Rupert reported 226 unloads, now ahead of last week's unloads after three days by 400 unloads.
  - Loads on wheels now above 1,000 cars - presently at 1,286 cars.
  - There are more than 700 cars west of Jasper en route to Prince Rupert.
  - There are more than 350 cars on site at Prince Rupert with more than 150 cars arriving at the port in the last 24 hours. Given the structure of the pipeline, there appears to be sufficient cars available to support unloads in the next few days.
- Thunder Bay
  - 150 unloads were reported at Thunder Bay yesterday. Three days in Week 24 unloads are tracking ahead of last week's pace by 150 unloads.
  - There are more than 150 cars on site at Thunder Bay with 23 cars arriving at the port in the prior 24 hours.
  - There are 100 cars en route to Thunder Bay from Winnipeg and east. Cars on hand and those en route might be challenged in the next day or two.

**Daily Loads on Wheels - 1/9/2019**

	E Canada	Prince Rupert	Thunder Bay	USA/MEX	Vancouver	Total
CN	682	1,286	29	180	2,676	4,853
CP	346		401	303	3,854	4,904
Short Line					34	34
US Rail				128		128
	1,028	1,286	430	611	6,564	9,919

**Change in Loads on Wheels - Prior 24 Hours**

	E Canada	Prince Rupert	Thunder Bay	USA/MEX	Vancouver	Total
CN	96	-118	-6	-7	-154	-189
CP	-48		-119	-3	-142	-312
Short Line					16	16
US Rail				-7		-7
	48	-118	-125	-17	-280	-492



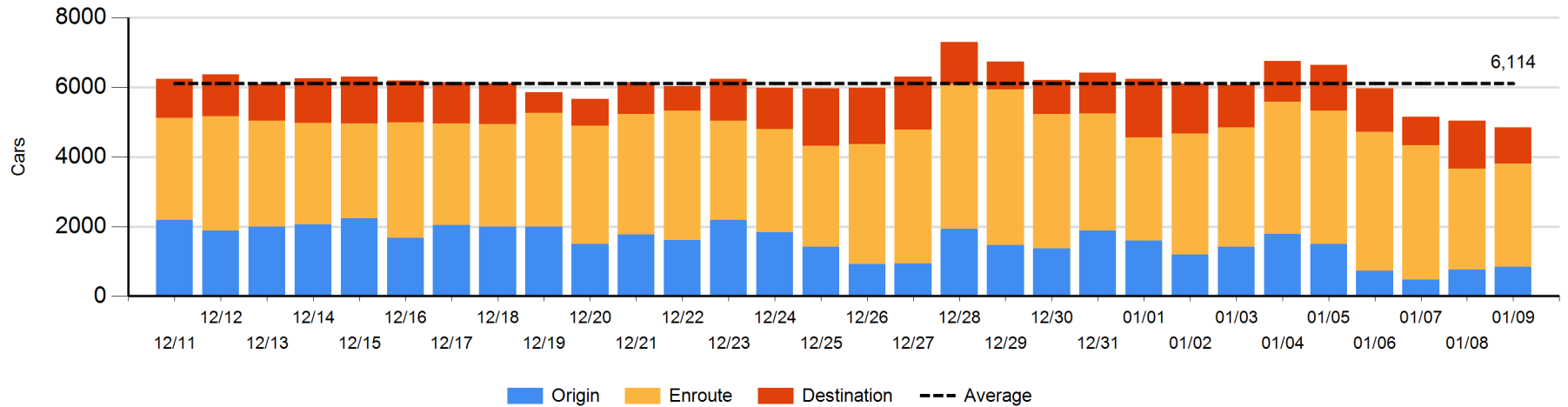
**Daily Loads on Wheels By Pipeline Location - 1/9/2019**

	E Canada	Prince Rupert	Thunder Bay	USA/MEX	Vancouver	Total
CN						
Origin	204	10		39	584	837
Enroute	369	913		115	1,579	2,976
Destination	109	363	29	26	513	1,040
	682	1,286	29	180	2,676	4,853
CP						
Origin	48		51	149	1,607	1,855
Enroute	172		205	145	1,233	1,755
Destination	126		145	9	1,014	1,294
	346		401	303	3,854	4,904
US Rail / Short Line						
Origin						
Enroute				72		72
Destination				56	34	90
				128	34	162

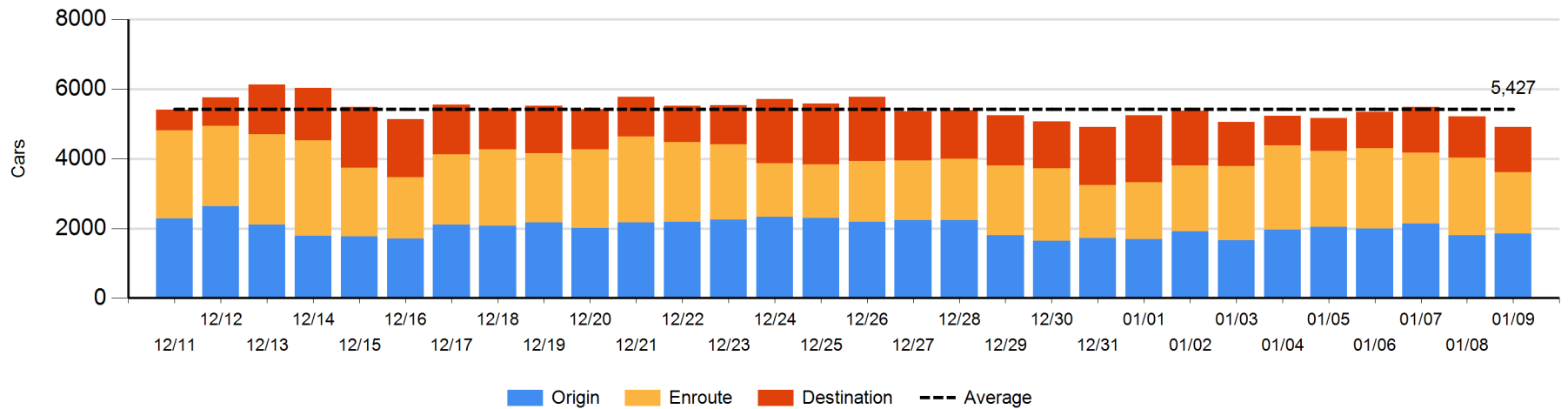
**Change in Daily Loads on Wheels By Pipeline Location - Prior 24 Hours**

	E Canada	Prince Rupert	Thunder Bay	USA/MEX	Vancouver	Total
CN						
Origin	146	-43		-39	18	82
Enroute	-89	-23		49	137	74
Destination	39	-52	-6	-17	-310	-346
	96	-118	-6	-7	-155	-190
CP						
Origin	24		2	4	29	59
Enroute	-107		0	-13	-355	-475
Destination	35		-121	6	184	104
	-48		-119	-3	-142	-312
US Rail / Short Line						
Origin						
Enroute				-5		-5
Destination				-2	16	14
				-7	16	9

**CN Loads on Wheels by Pipeline Location - 1/9/2019**



**CP Loads on Wheels by Pipeline Location - 1/9/2019**

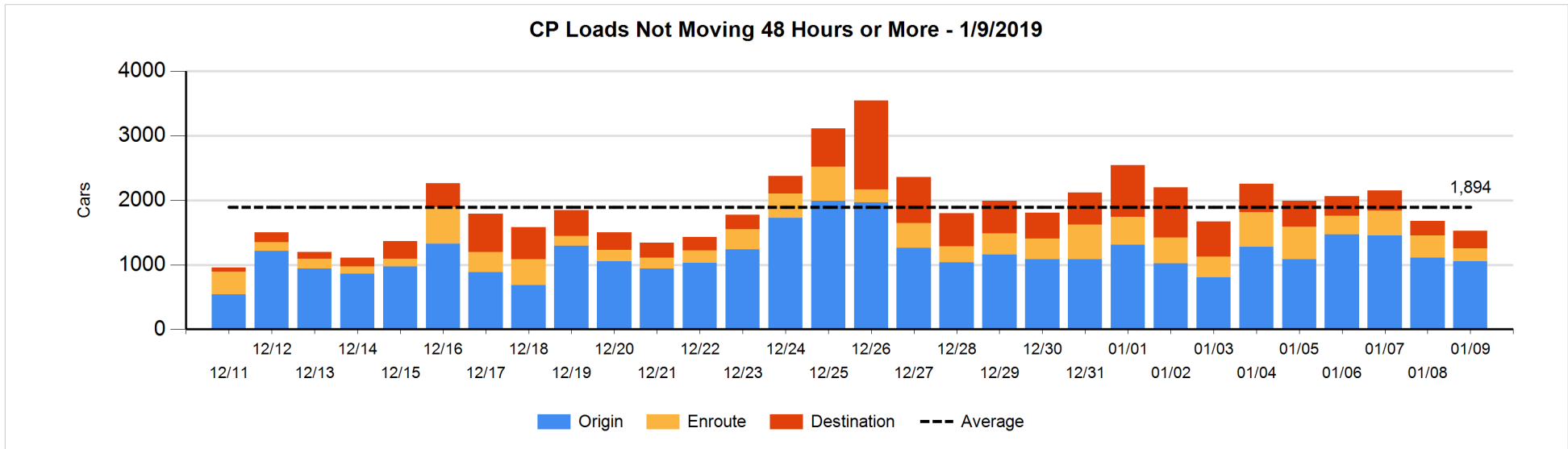
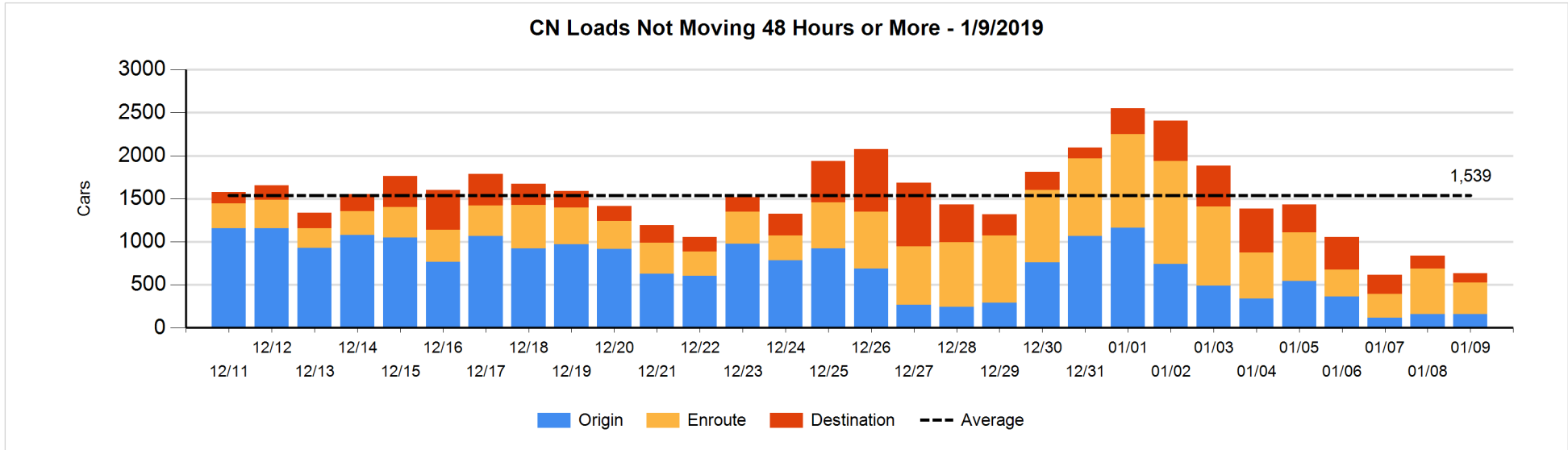


**Loads Not Moving 48 Hours or More - 1/9/2019**

	E Canada	Prince Rupert	Thunder Bay	USA/MEX	Vancouver	Total
<b>CN</b>						
Origin	2	2		1	152	157
Enroute	33	211		25	100	369
Destination	13	1	29	13	50	106
	48	214	29	39	302	632
<b>CP</b>						
Origin	16			38	1003	1057
Enroute	136		2	41	15	194
Destination			88		190	278
	152		90	79	1208	1529
<b>US Rail / Short Line</b>						
Origin						
Enroute				43		43
Destination				34	2	36
				77	2	79

**Change in Loads Not Moving 48 Hours or More - 1/9/2019**

	E Canada	Prince Rupert	Thunder Bay	USA/MEX	Vancouver	Total
<b>CN</b>						
Origin	0	0		0	0	0
Enroute	-77	88		7	-177	-159
Destination	-17	-20	22	2	-35	-48
	-94	68	22	9	-212	-207
<b>CP</b>						
Origin	15			37	-101	-49
Enroute	19		0	-35	-136	-152
Destination			-76		125	49
	34		-76	2	-112	-152
<b>US Rail / Short Line</b>						
Origin						
Enroute				-6		-6
Destination				16	-8	8
				10	-8	2

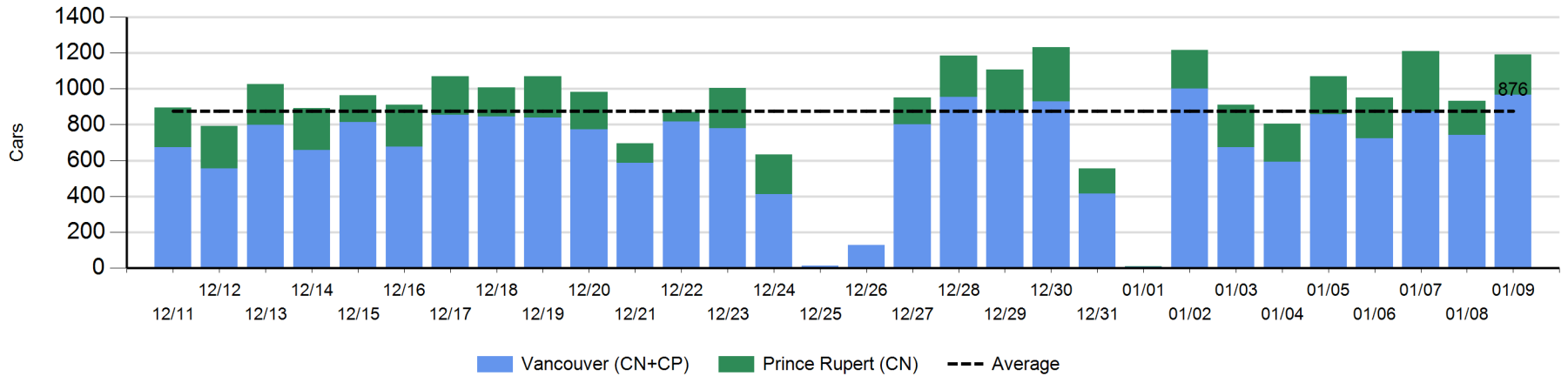




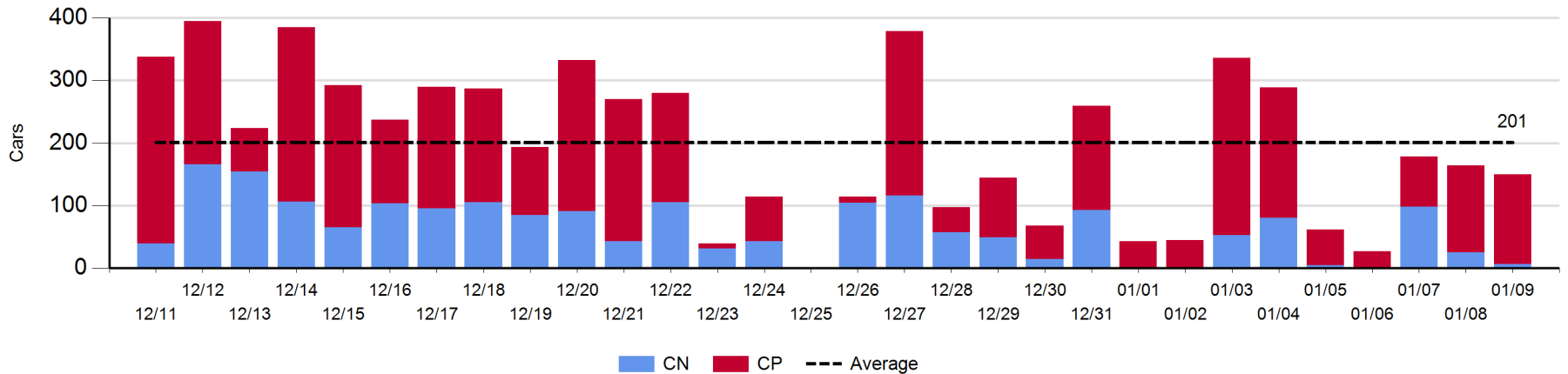
Port Unloads - 1/9/2019

	Prince Rupert	Vancouver	West Coast Total	Thunder Bay	Total
CN	226	510	736	6	742
CP		456	456	144	600
	226	966	1,192	150	1,342

West Coast Port Unloads - Prior 30 Days



Thunder Bay Port Unloads - Prior 30 Days





**Port Terminal Status**

**Vancouver**

Daily Activity for 1/9/2019

	Cars Arrived	Cars Received in Interchange	Cars Delivered in Interchange	Cars Placed for Unloading	Loads on Wheels at Destination As of 1/9/2019
CN	174	111	84	516	513
CP	685	84	112	426	1,014
SRY		1		2	34

**Port Unloads**

	01/09	01/08	Week To Date	Last Week
CN	510	342	1,219	2,186
CP	456	399	1,361	2,089
SRY	3	14	24	84

**Age Profile of Loaded Cars Waiting Placement for Unloading**

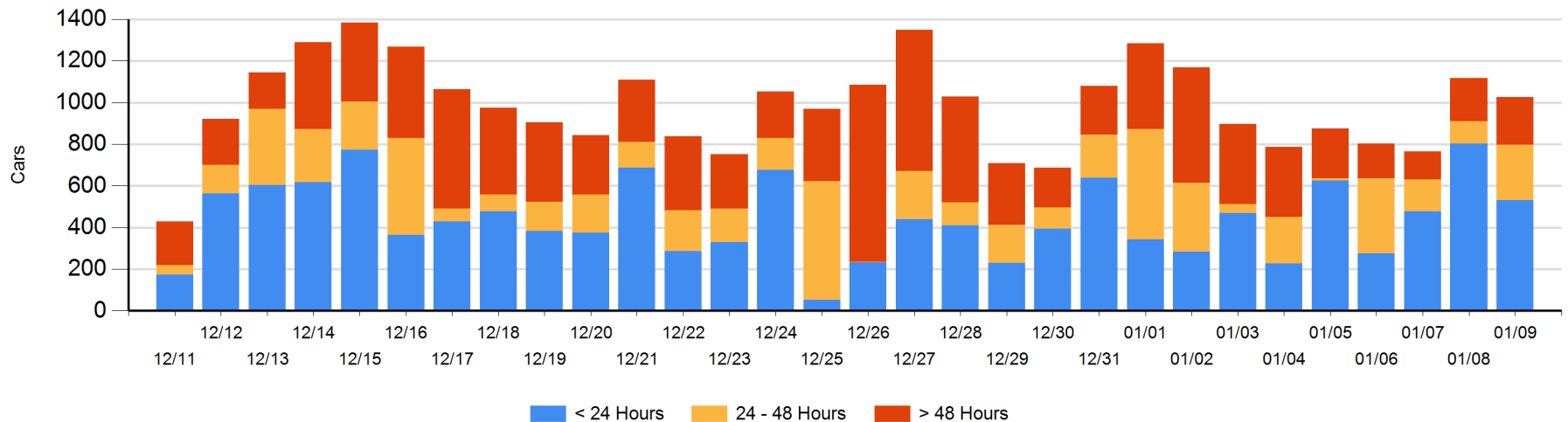
**Today**

	< 24 Hrs	24 - 48 Hrs	> 48-72 Hrs	> 72 Hrs	Total On Hand
CN	109	110	21	37	277
CP	422	156	37	119	734
SRY				15	15

**Change in Last 24 Hours**

	< 24 Hrs	24-48 Hrs	48 - 72 Hrs	> 72 Hrs
CN	-439	64	19	-27
CP	166	96	-75	104
SRY			-15	15

**Loaded Cars on Hand Vancouver Waiting for Placement - Last 30 Days All Railways**



**Port Terminal Status**

**Prince Rupert**

Daily Activity for 1/9/2019

	Cars Arrived	Cars Received in Interchange	Cars Delivered in Interchange	Cars Placed for Unloading	Loads on Wheels at Destination As of 1/9/2019
CN	174			174	363

**Port Unloads**

	01/09	01/08	Week To Date	Last Week
CN	226	190	754	1,247

**Age Profile of Loaded Cars Waiting Placement for Unloading**

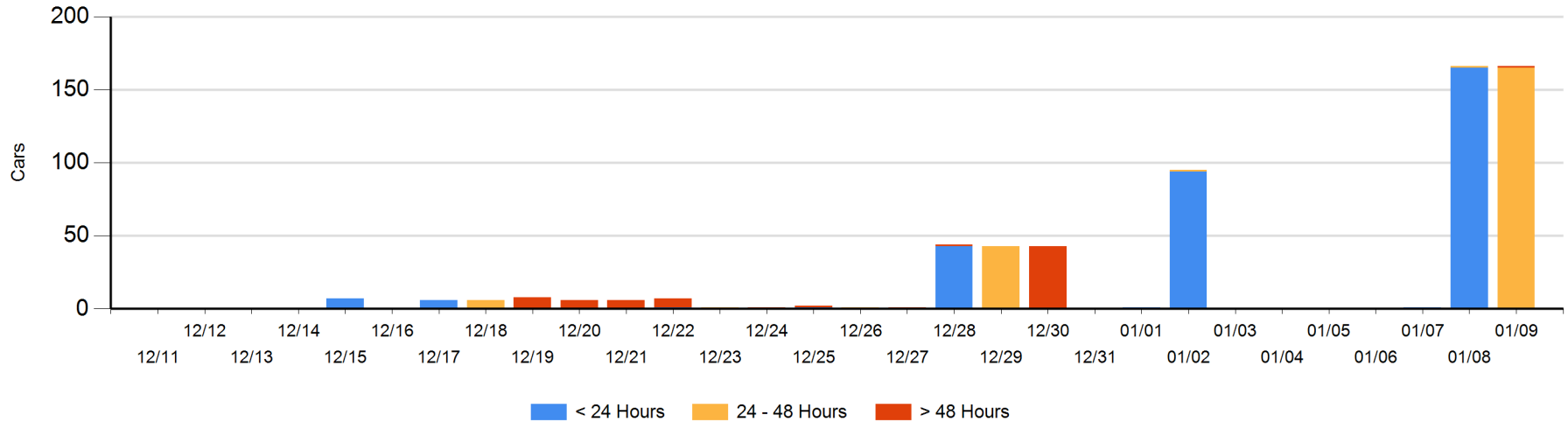
**Today**

	< 24 Hrs	24 - 48 Hrs	> 48-72 Hrs	> 72 Hrs	Total On Hand
CN		165	1		166

**Change in Last 24 Hours**

	< 24 Hrs	24-48 Hrs	48 - 72 Hrs	> 72 Hrs
CN	-165	164	1	

Loaded Cars on Hand Prince Rupert Waiting for Placement - Last 30 Days All Railways



**Port Terminal Status**

**Thunder Bay**

Daily Activity for 1/9/2019

	Cars Arrived	Cars Received in Interchange	Cars Delivered in Interchange	Cars Placed for Unloading	Loads on Wheels at Destination As of 1/9/2019
CN					29
CP	23			44	145

**Port Unloads**

	01/09	01/08	Week To Date	Last Week
CN	6	25	129	232
CP	144	139	363	829

**Age Profile of Loaded Cars Waiting Placement for Unloading**

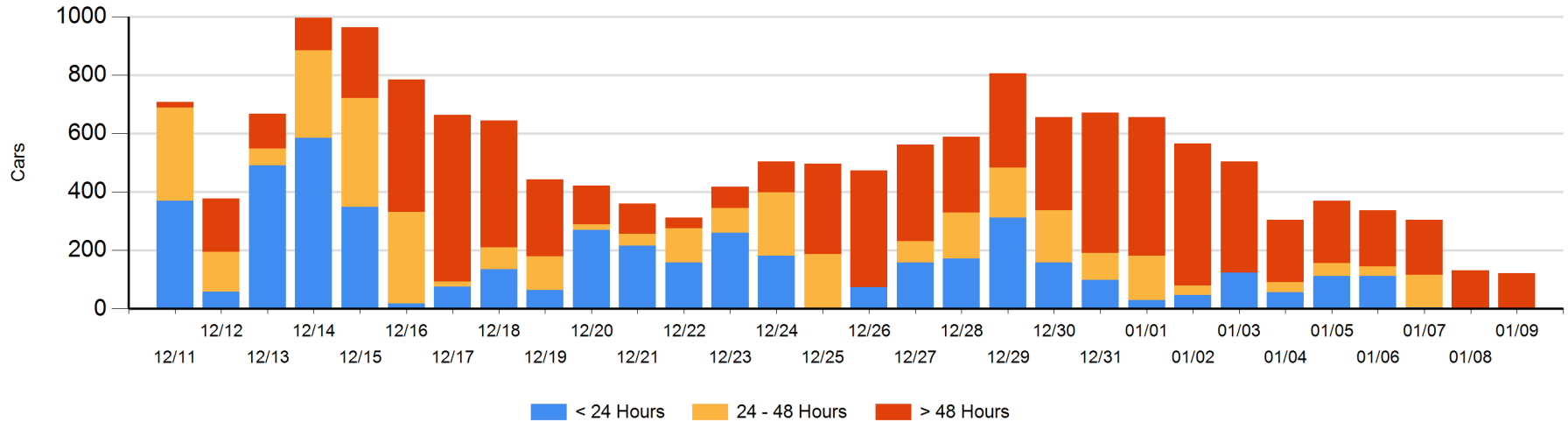
**Today**

	< 24 Hrs	24 - 48 Hrs	> 48-72 Hrs	> 72 Hrs	Total On Hand
CN				17	17
CP			1	104	105

**Change in Last 24 Hours**

	< 24 Hrs	24-48 Hrs	48 - 72 Hrs	> 72 Hrs
CN			-2	2
CP		-1	-76	68

Loaded Cars on Hand Thunder Bay Waiting for Placement - Last 30 Days All Railways



## Measurement Definitions

Loads on Wheels	<p>Count of loaded rail cars including all rail cars that have been released loaded at origin and have not been reported by the railway as unloaded at destination.</p> <p>Counts include all rail cars (hopper cars and boxcars) moving within a pipeline.</p>
Loads Not Moving	<p>Loaded rail cars for which the railways have not reported a movement event for 48 hours or more whether the rail car is at origin, enroute or at destination.</p>
Port Unloads	<p>Count of rail cars reported by railways as unloaded at the western port destinations of Vancouver, Prince Rupert and Thunder Bay.</p> <p>Unload counts include all rail cars (hopper cars and boxcars) unloaded by all receivers including major port terminals, transloaders and other receivers.</p>
Cars Arrived	<p>Count of rail cars reported as arrived at the destination railway terminal.</p>
Cars Received in Interchange	<p>Count of rail cars received in interchange by each railway within a destination railway terminal. Interchange activity is tracked for the Vancouver and Thunder Bay pipelines as applicable.</p>
Cars Delivered in Interchange	<p>Count of rail cars delivered in interchange by each railway within a destination railway terminal. Interchange activity is tracked for the Vancouver and Thunder Bay pipelines as applicable.</p>
Cars Placed for Unloading	<p>Count of rail cars reported by the railways as placed loaded at the receiver's facility for unloading.</p>
Loads on Wheels at Destination	<p>Count of rail cars that remain under load within the destination railway terminal including rail cars that have been reported as placed for unloading but not yet reported as unloaded.</p>
Waiting Placement for Unloading	<p>Count of rail cars that have been reported as arrived at the destination railway terminal but not reported as placed for unloading by the railway.</p> <p>For the Ports of Vancouver, Prince Rupert and Thunder Bay the count of rail cars waiting placement for unloading is categorized by age – i.e. the elapsed time from arrival at destination to the current report date.</p>