

## SPEED READ

- Loads on wheels decreased overnight, marking a decline in CN traffic offset by higher CP volumes. On a net basis, volumes fell due to lower volumes in the Vancouver, Thunder Bay and E. Canada corridors offset by higher volumes in the Prince Rupert and USA/MEX corridors.
- Network fluidity deteriorated overnight, led by an increase in idle car counts on both CN and CP by 24% (+165) and 23% (+366), respectively. The total count of cars for 4+ days on both railways rose 34% (+235) overnight - now at 926 cars.
- One day in Week 26 unloads now behind prior week's performance by more than 150 unloads, reflecting reduced unloads at Prince Rupert and Thunder Bay offset by improved week over week performance at Vancouver.

---

## Loads on Wheels

- Loads on wheels decreased 2% (-173) overnight, due to lower traffic on CN offset by higher traffic on CP - combined total at 9,931 and 9% below the trailing 30-day average.
- On a net basis, the decline in loads on wheels indicates reduced traffic in the Vancouver, Thunder Bay and E. Canada corridors offset by higher volumes in the Prince Rupert and USA/MEX corridors.
- CN volumes decreased 4% (-202) overnight, with lower volumes in the Vancouver, Thunder Bay and E. Canada corridors offset by higher volumes in the Prince Rupert and USA/MEX corridors. System wide CN loads on wheels now at 4,995 and 13% below the trailing 30-day average.
- CP volumes rose slightly by 1% (+67) overnight, driven by a rise in traffic across all corridors other than Vancouver. CP system wide loads on wheels presently at 4,674 and 6% below the trailing 30-day average.
- Vancouver currently at 5,843, the lowest seen in the last 30 days, decreased 4% (-250) overnight, now 15% below the trailing 30-day average.
- The Prince Rupert pipeline now at 1,705, increased 6% (+92) overnight and have now increased for the third consecutive day, and 8% above the trailing 30-day average.
- Thunder Bay volumes declined significantly by 12% (-48) overnight - now at 352 and 59% below the trailing 30-day average, with 79% of traffic moving on CP.

## Hopper Car Rationing

- No hopper car rationing was reported for either CN or CP in week 24.

## Loads Not Moving

- **The count of cars not moving for 48+ hours increased for the third consecutive day, up 23% (+531) overnight, marking higher counts on both CN and CP. Idle car counts now at 2,839 and 7% below the trailing 30 day-average.**
- CN
  - **The count of idle cars for 48+ hours rose 24% (+165) overnight and have now increased for the third consecutive day - presently at 853 cars.**
  - The number of cars idle for 4+ days declined 8% (-22) overnight - now at 249 cars.
  - The count of cars not moving for 7+ days decreased 22% (-25) overnight - presently at 91 cars.
  - Vancouver represents 49% of all idle cars.
  - In total 29% of all idle cars are dwelling at origin locations.
- CP
  - **CP idle car counts for 48+ hours increased for the fourth consecutive day, up 23% (+366) overnight - currently at 1,986 cars.**

- The number of cars idle for 4+ days increased significantly by 61% (+257) overnight - now at 677 cars.
- The number of cars idle for 7+ days gained 42% (+64) overnight - presently at 218 cars.
- Vancouver accounts for 73% of all idle cars.
- In total 76% of all idle cars are dwelling at origin locations.

### **Port Performance**

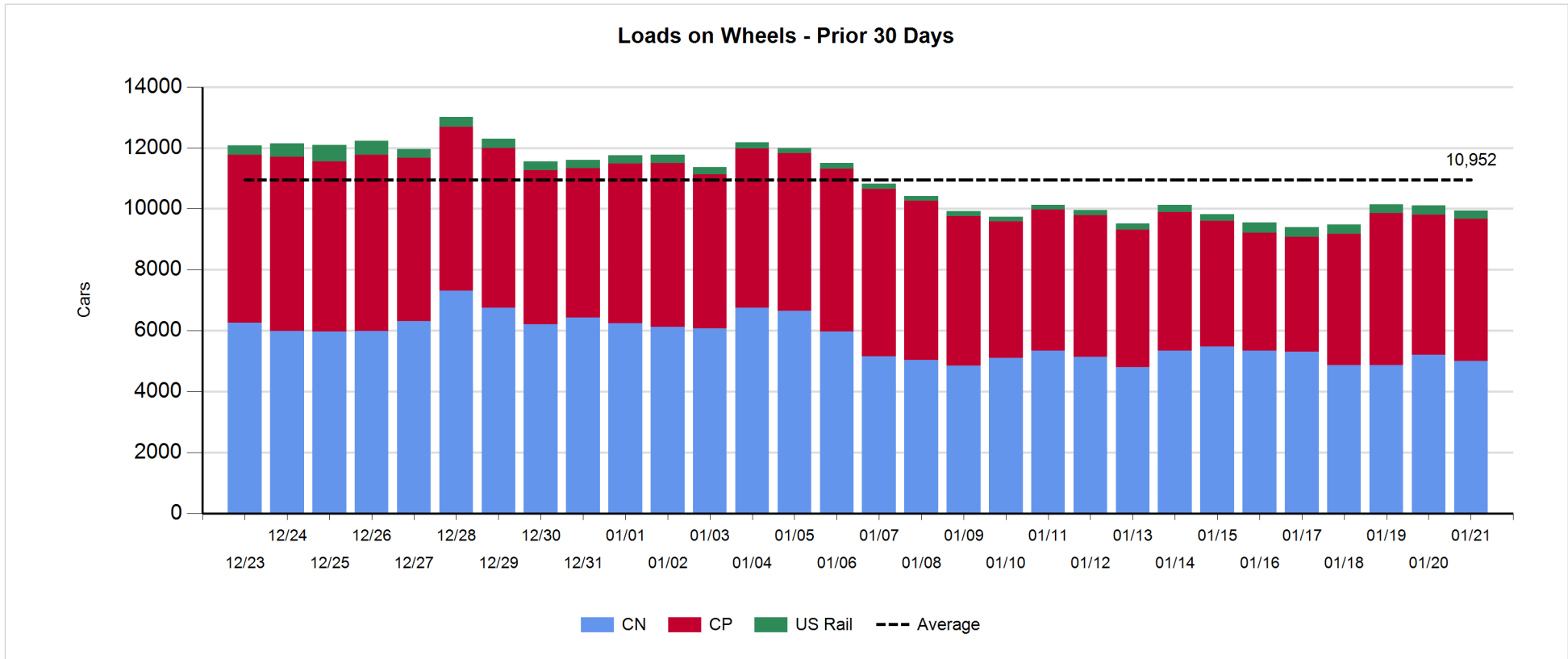
- CN and CP reported a total of 938 cars unloaded at the three major ports, now 8% below the trailing 30 day-average. One day in Week 26 unloads now behind last week's pace by more than 150 unloads, reflecting lower unloads at Prince Rupert and Thunder Bay offset by higher unloads at Vancouver.
- Vancouver
  - 766 unloads reported by CN and CP at the Port of Vancouver; CN - 342 and CP - 424. One day in Week 26 unloads are tracking ahead of last week's performance by 50 unloads.
  - There are more than 1,250 cars on site at Vancouver with 900 cars arriving at the port in the last 24 hours.
  - CN and CP have 1,450 cars in British Columbia en route to Vancouver, with 700 cars at Kamloops and west, and 56% of traffic moving on CN.
- Prince Rupert
  - Prince Rupert reported 101 unloads, now behind last week's unloads after one day by more than 100 unloads.
  - Loads on wheels now above 1,000 cars - now at 1,705 cars.
  - There are nearly 450 cars west of Jasper en route to Prince Rupert.
  - There are more than 100 cars on site at Prince Rupert with 200 cars arriving at the port in the last 24 hours. Given the structure of the pipeline, there appears to be sufficient cars available to support unloads in the next few days.
- Thunder Bay
  - 71 unloads were reported at Thunder Bay yesterday. One day in Week 26 unloads are tracking behind last week's pace by nearly 100 unloads.
  - There are 100 cars on site at Thunder Bay with more than 50 cars arriving at the port in the prior 24 hours.
  - There are more than 100 cars en route to Thunder Bay from Winnipeg and east. Cars on hand and those en route might be challenged in the next day or two.

**Daily Loads on Wheels - 1/21/2019**

	E Canada	Prince Rupert	Thunder Bay	USA/MEX	Vancouver	Total
CN	577	1,705	75	151	2,487	4,995
CP	443		277	661	3,293	4,674
Short Line	2				63	65
US Rail				197		197
	1,022	1,705	352	1,009	5,843	9,931

**Change in Loads on Wheels - Prior 24 Hours**

	E Canada	Prince Rupert	Thunder Bay	USA/MEX	Vancouver	Total
CN	-52	92	-72	1	-171	-202
CP	23		24	125	-105	67
Short Line	2				26	28
US Rail				-66		-66
	-27	92	-48	60	-250	-173

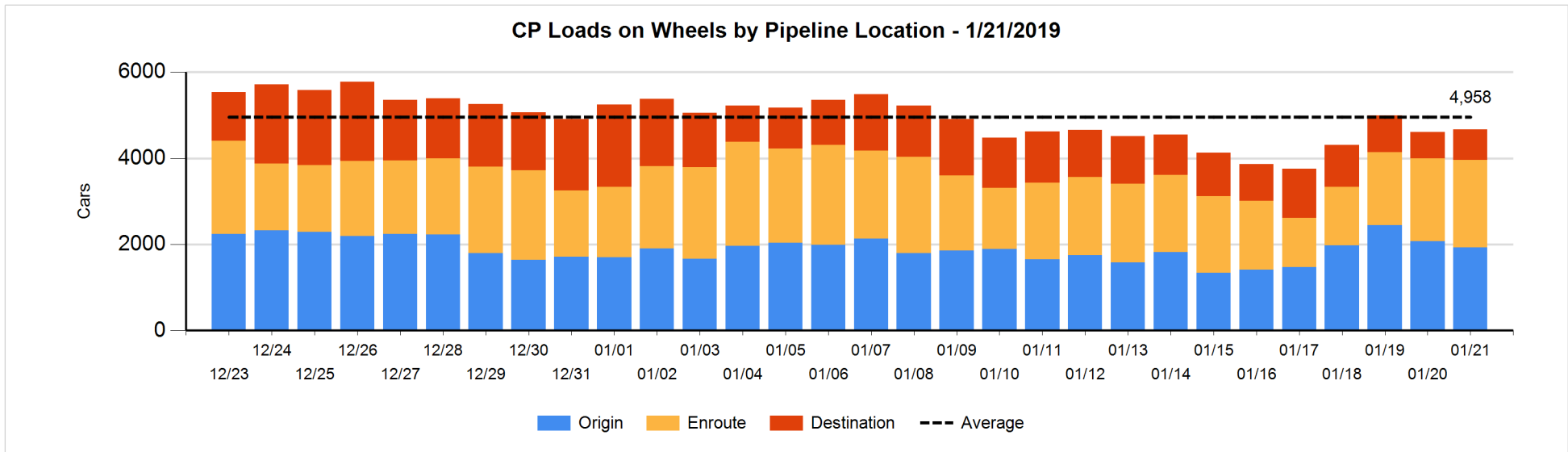
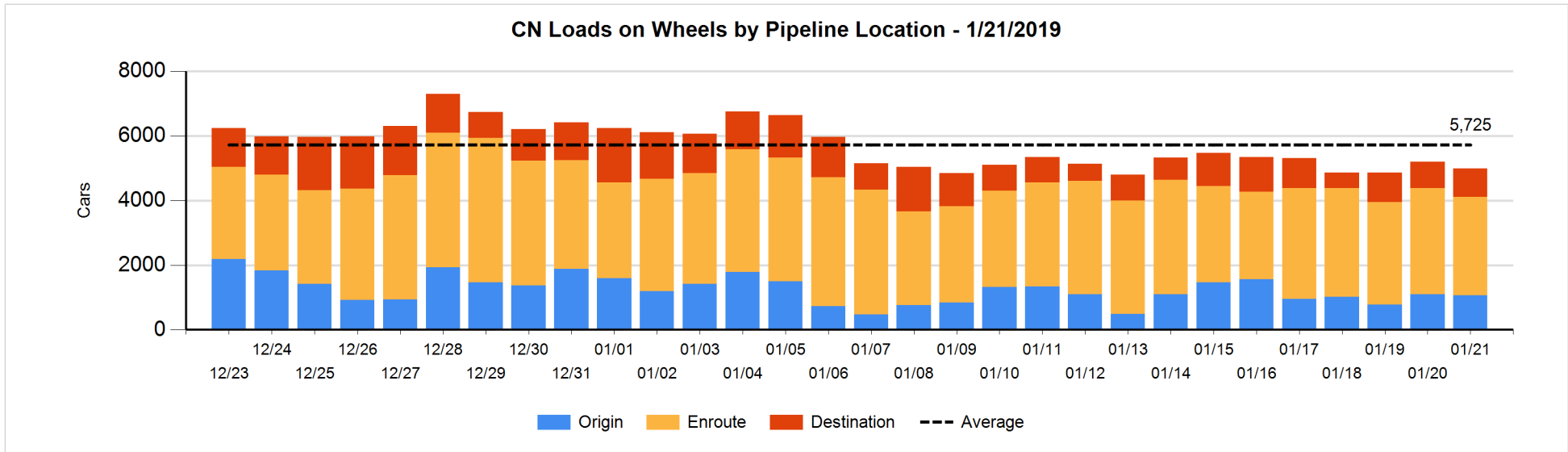


**Daily Loads on Wheels By Pipeline Location - 1/21/2019**

	E Canada	Prince Rupert	Thunder Bay	USA/MEX	Vancouver	Total
CN						
Origin	1	537	1	12	518	1,069
Enroute	435	1,052	1	117	1,437	3,042
Destination	141	116	73	22	532	884
	577	1,705	75	151	2,487	4,995
CP						
Origin	188		135	326	1,284	1,933
Enroute	253		112	328	1,337	2,030
Destination	2		30	7	672	711
	443		277	661	3,293	4,674
US Rail / Short Line						
Origin						
Enroute				124		124
Destination	2			73	63	138
	2			197	63	262

**Change in Daily Loads on Wheels By Pipeline Location - Prior 24 Hours**

	E Canada	Prince Rupert	Thunder Bay	USA/MEX	Vancouver	Total
CN						
Origin	0	-295	0	5	258	-32
Enroute	-23	288	-48	-4	-459	-246
Destination	-29	99	-24	0	30	76
	-52	92	-72	1	-171	-202
CP						
Origin	23		24	96	-288	-145
Enroute	0		-17	29	97	109
Destination	0		17	0	86	103
	23		24	125	-105	67
US Rail / Short Line						
Origin						
Enroute				-60		-60
Destination	2			-6	26	22
	2			-66	26	-38

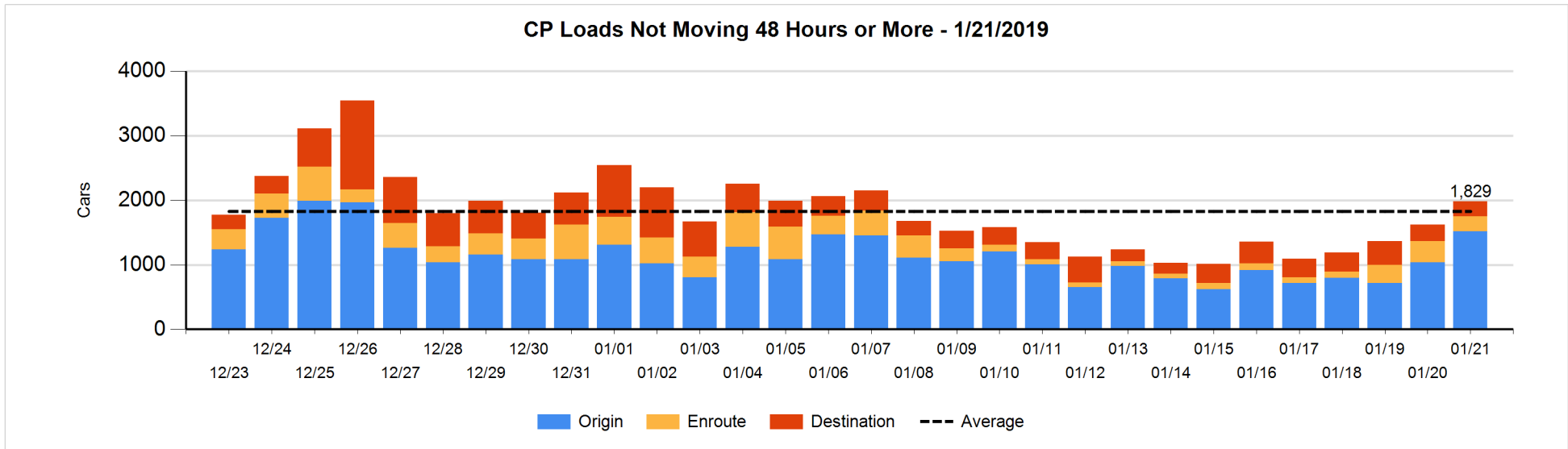
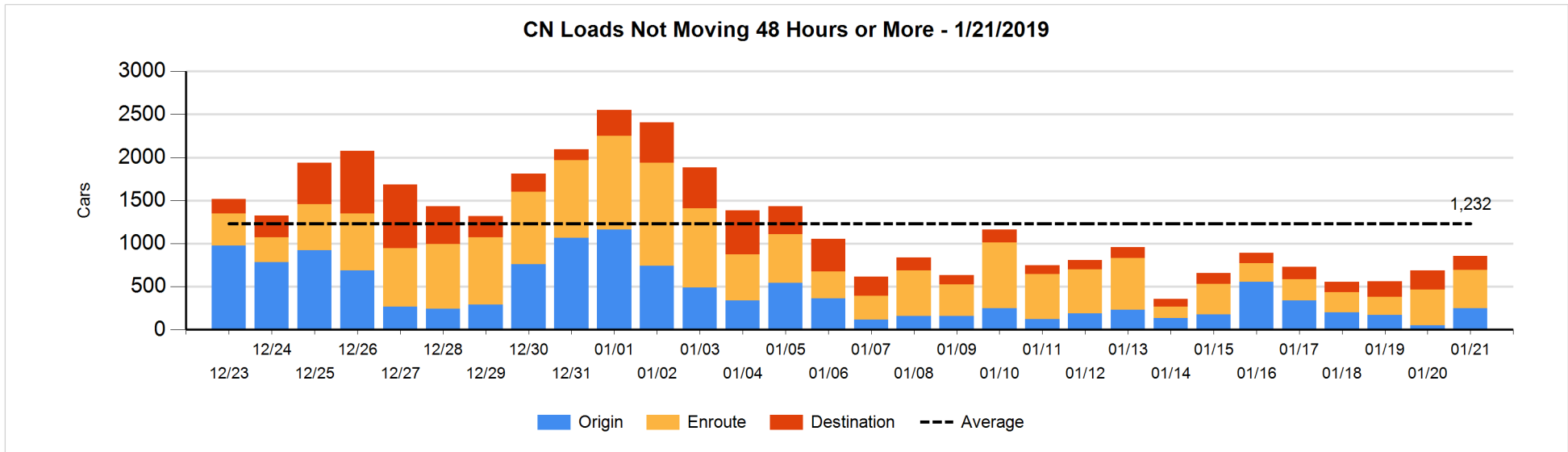


**Loads Not Moving 48 Hours or More - 1/21/2019**

	E Canada	Prince Rupert	Thunder Bay	USA/MEX	Vancouver	Total
<b>CN</b>						
Origin	1	99	1	7	138	246
Enroute	192	28	1	21	204	446
Destination	65	4	1	13	78	161
	258	131	3	41	420	853
<b>CP</b>						
Origin	161		111	125	1119	1516
Enroute	3			112	118	233
Destination	2		13	7	215	237
	166		124	244	1452	1986
<b>US Rail / Short Line</b>						
Origin						
Enroute				29		29
Destination				43	23	66
				72	23	95

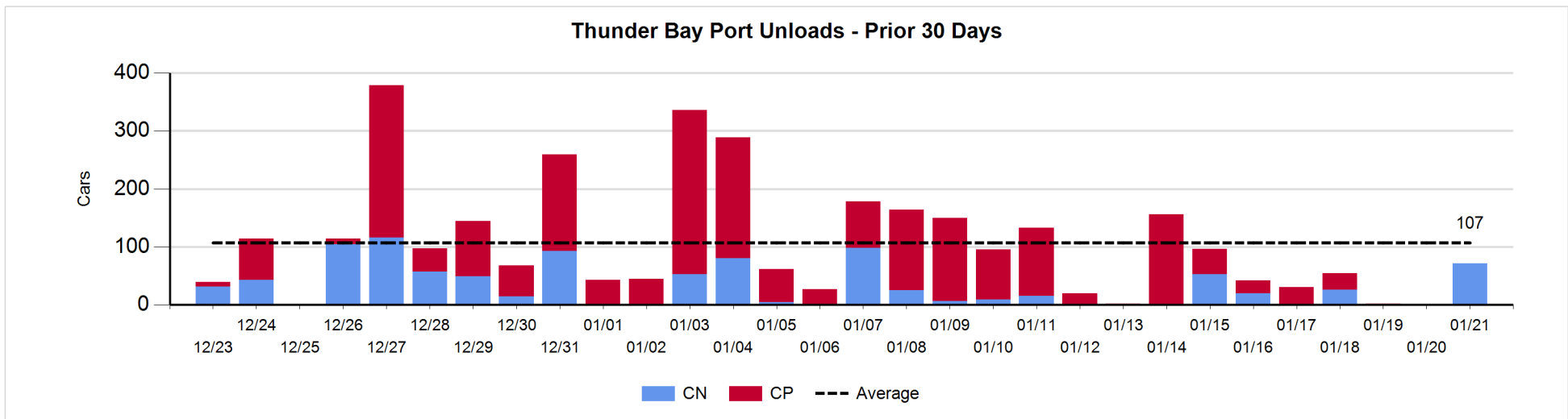
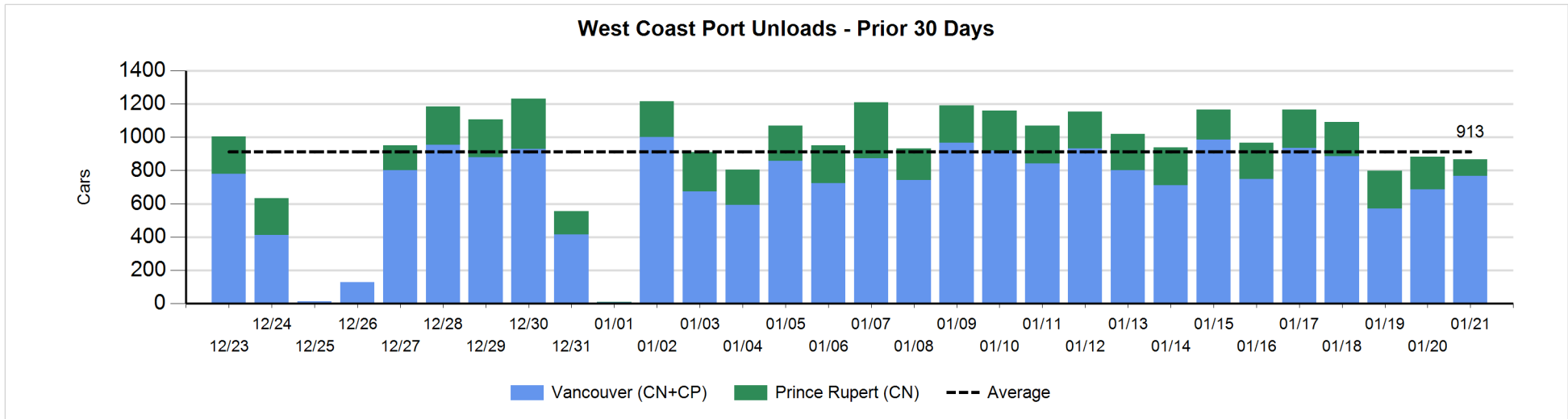
**Change in Loads Not Moving 48 Hours or More - 1/21/2019**

	E Canada	Prince Rupert	Thunder Bay	USA/MEX	Vancouver	Total
<b>CN</b>						
Origin	0	97	0	0	101	198
Enroute	29	-5	0	1	4	29
Destination	-42	0	-1	5	-24	-62
	-13	92	-1	6	81	165
<b>CP</b>						
Origin	157		0	0	323	480
Enroute	-3			-73	-18	-94
Destination	0		0	2	-22	-20
	154		0	-71	283	366
<b>US Rail / Short Line</b>						
Origin						
Enroute				0		0
Destination				-10	-1	-11
				-10	-1	-11



**Port Unloads - 1/21/2019**

	Prince Rupert	Vancouver	West Coast Total	Thunder Bay	Total
CN	101	342	443	71	514
CP		424	424		424
	101	766	867	71	938





**Port Terminal Status**

**Vancouver**

Daily Activity for 1/21/2019

	Cars Arrived	Cars Received in Interchange	Cars Delivered in Interchange	Cars Placed for Unloading	Loads on Wheels at Destination As of 1/21/2019
CN	543	2	246	521	532
CP	362	240	16	357	672
SRY		20		2	63

**Port Unloads**

	01/21	01/20	Week To Date	Last Week
CN	342	319	342	2,542
CP	424	367	424	2,978
SRY	3	2	3	75

**Age Profile of Loaded Cars Waiting Placement for Unloading**

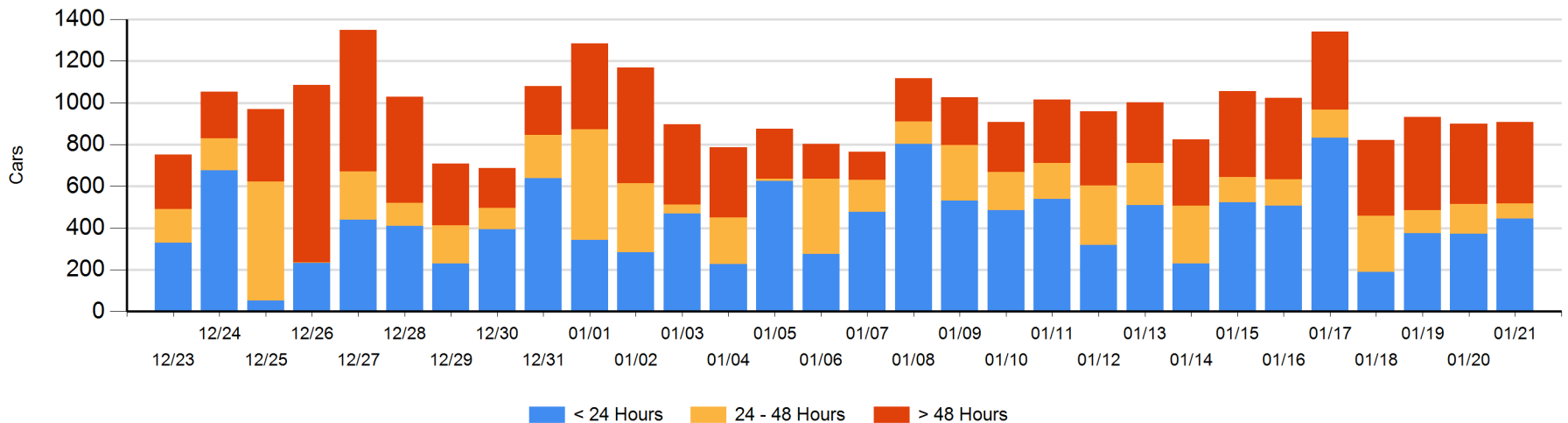
**Today**

	< 24 Hrs	24 - 48 Hrs	> 48-72 Hrs	> 72 Hrs	Total On Hand
CN	355	53	55	68	531
CP	91	19	85	177	372
SRY				4	4

**Change in Last 24 Hours**

	< 24 Hrs	24-48 Hrs	48 - 72 Hrs	> 72 Hrs
CN	244	-5	36	-62
CP	-170	-66	43	-13
SRY				0

**Loaded Cars on Hand Vancouver Waiting for Placement - Last 30 Days All Railways**



**Port Terminal Status**

**Prince Rupert**

Daily Activity for 1/21/2019

	Cars Arrived	Cars Received in Interchange	Cars Delivered in Interchange	Cars Placed for Unloading	Loads on Wheels at Destination As of 1/21/2019
CN	200			200	116

**Port Unloads**

	01/21	01/20	Week To Date	Last Week
CN	101	197	101	1,489

**Age Profile of Loaded Cars Waiting Placement for Unloading**

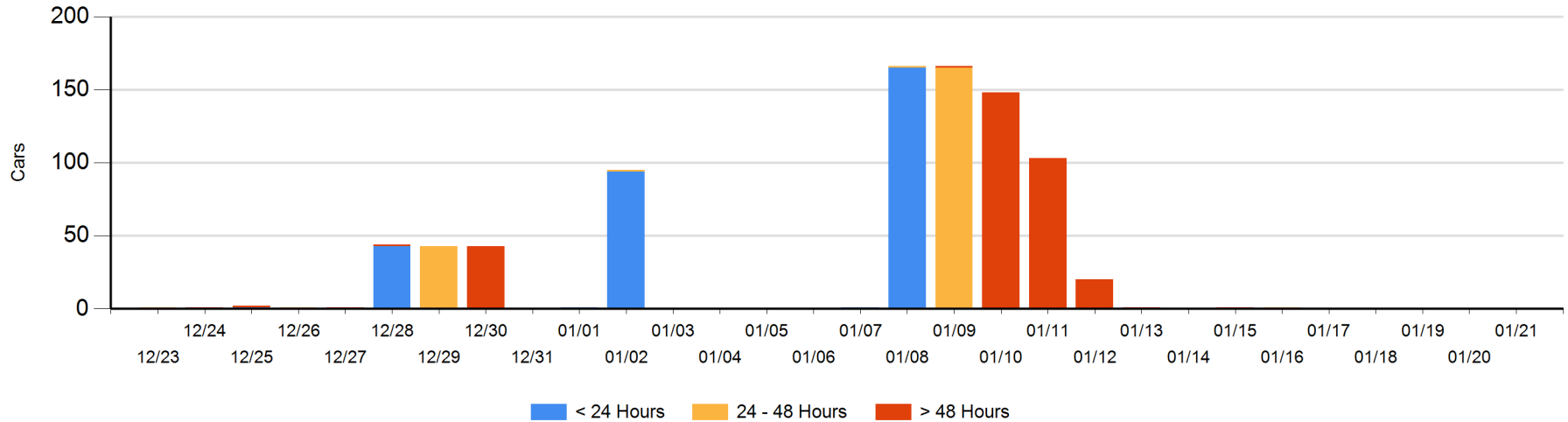
**Today**

	< 24 Hrs	24 - 48 Hrs	> 48-72 Hrs	> 72 Hrs	Total On Hand
CN					0

**Change in Last 24 Hours**

	< 24 Hrs	24-48 Hrs	48 - 72 Hrs	> 72 Hrs
CN				

Loaded Cars on Hand Prince Rupert Waiting for Placement - Last 30 Days All Railways



**Port Terminal Status**

**Thunder Bay**

Daily Activity for 1/21/2019

	Cars Arrived	Cars Received in Interchange	Cars Delivered in Interchange	Cars Placed for Unloading	Loads on Wheels at Destination As of 1/21/2019
CN	48			27	73
CP	17				30

**Port Unloads**

	01/21	01/20	Week To Date	Last Week
CN	71		71	99
CP				281

**Age Profile of Loaded Cars Waiting Placement for Unloading**

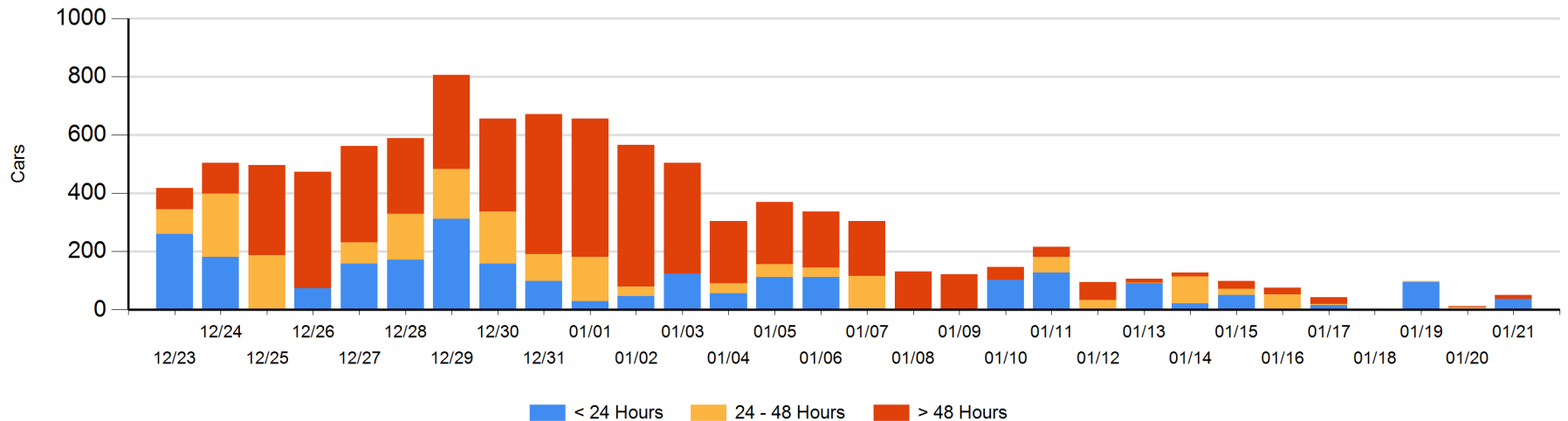
**Today**

	< 24 Hrs	24 - 48 Hrs	> 48-72 Hrs	> 72 Hrs	Total On Hand
CN	21		9		30
CP	17			3	20

**Change in Last 24 Hours**

	< 24 Hrs	24-48 Hrs	48 - 72 Hrs	> 72 Hrs
CN	21	-9	9	
CP	17		-3	3

**Loaded Cars on Hand Thunder Bay Waiting for Placement - Last 30 Days All Railways**



## Measurement Definitions

Loads on Wheels	<p>Count of loaded rail cars including all rail cars that have been released loaded at origin and have not been reported by the railway as unloaded at destination.</p> <p>Counts include all rail cars (hopper cars and boxcars) moving within a pipeline.</p>
Loads Not Moving	<p>Loaded rail cars for which the railways have not reported a movement event for 48 hours or more whether the rail car is at origin, enroute or at destination.</p>
Port Unloads	<p>Count of rail cars reported by railways as unloaded at the western port destinations of Vancouver, Prince Rupert and Thunder Bay.</p> <p>Unload counts include all rail cars (hopper cars and boxcars) unloaded by all receivers including major port terminals, transloaders and other receivers.</p>
Cars Arrived	<p>Count of rail cars reported as arrived at the destination railway terminal.</p>
Cars Received in Interchange	<p>Count of rail cars received in interchange by each railway within a destination railway terminal. Interchange activity is tracked for the Vancouver and Thunder Bay pipelines as applicable.</p>
Cars Delivered in Interchange	<p>Count of rail cars delivered in interchange by each railway within a destination railway terminal. Interchange activity is tracked for the Vancouver and Thunder Bay pipelines as applicable.</p>
Cars Placed for Unloading	<p>Count of rail cars reported by the railways as placed loaded at the receiver's facility for unloading.</p>
Loads on Wheels at Destination	<p>Count of rail cars that remain under load within the destination railway terminal including rail cars that have been reported as placed for unloading but not yet reported as unloaded.</p>
Waiting Placement for Unloading	<p>Count of rail cars that have been reported as arrived at the destination railway terminal but not reported as placed for unloading by the railway.</p> <p>For the Ports of Vancouver, Prince Rupert and Thunder Bay the count of rail cars waiting placement for unloading is categorized by age – i.e. the elapsed time from arrival at destination to the current report date.</p>