

## SPEED READ

- Loads on wheels decreased overnight, marking a decline in CN volumes offset by higher CP volumes. On a net basis, volumes fell due to lower traffic across all corridors other than Prince Rupert.
- Network fluidity improved overnight, led by a decline in idle car counts on both CN and CP by 9% (-74) and 28% (-549), respectively. The total count of cars for 4+ days on both railways gained 31% (+287) overnight - now at 1,214 cars.
- Two days in Week 26 unloads now behind prior week's performance by more than 400 unloads, reflecting reduced unloads across all three major ports - Vancouver, Thunder Bay and Prince Rupert.

---

## Loads on Wheels

- Loads on wheels declined 2% (-152) overnight and have now decreased for the third consecutive day, due to reduced volumes on CN offset by higher volumes on CP - combined total at 9,783 and 10% below the trailing 30-day average.
- On a net basis, the decline in loads on wheels indicates lower volumes across all corridors other than Prince Rupert.
- CN volumes fell 4% (-183) overnight, with lower volumes in the Vancouver, Thunder Bay and E. Canada corridors offset by higher volumes in the Prince Rupert and USA/MEX corridors. System wide CN loads on wheels now at 4,814 and 15% below the trailing 30-day average.
- CP volumes increased 2% (+85) overnight, driven by an increase in volumes in the Vancouver corridor offset by a decline in volumes in the USA/MEX, Thunder Bay and E. Canada corridors. CP system wide loads on wheels presently at 4,761 and 3% below the trailing 30-day average.
- Vancouver presently at 5,750, the lowest seen in the last 30 days, fell 2% (-94) overnight and have now decreased for the third consecutive day, now 16% below the trailing 30-day average.
- The Prince Rupert pipeline presently at 1,855, increased 9% (+148) overnight and have now increased for the fourth consecutive day, and 17% above the trailing 30-day average.
- Thunder Bay volumes decreased significantly by 19% (-67) overnight - presently at 285 and 65% below the trailing 30-day average, with 88% of traffic moving on CP.

## Hopper Car Rationing

- No hopper car rationing was reported for either CN or CP in week 24.

## Loads Not Moving

- **The count of cars not moving for 48+ hours decreased 22% (-623) overnight, reflecting reduced counts on both CN and CP. Idle car counts now at 2,217 and 27% below the trailing 30 day-average.**
- CN
  - **The count of idle cars for 48+ hours fell 9% (-74) overnight - presently at 779 cars.**
  - The number of cars idle for 4+ days increased 24% (+59) overnight - now at 308 cars.
  - The count of cars not moving for 7+ days fell 36% (-33) overnight - now at 58 cars.
  - Vancouver represents 57% of all idle cars.
  - In total 18% of all idle cars are dwelling at origin locations.
- CP
  - **CP idle car counts for 48+ hours declined 28% (-549) overnight - presently at 1,438 cars.**
  - The number of cars idle for 4+ days increased 34% (+228) overnight - presently at 906 cars.

- The number of cars idle for 7+ days rose for the third consecutive day, up 2% (+4) overnight - presently at 223 cars.
- Vancouver accounts for 77% of all idle cars.
- In total 78% of all idle cars are dwelling at origin locations.

### **Port Performance**

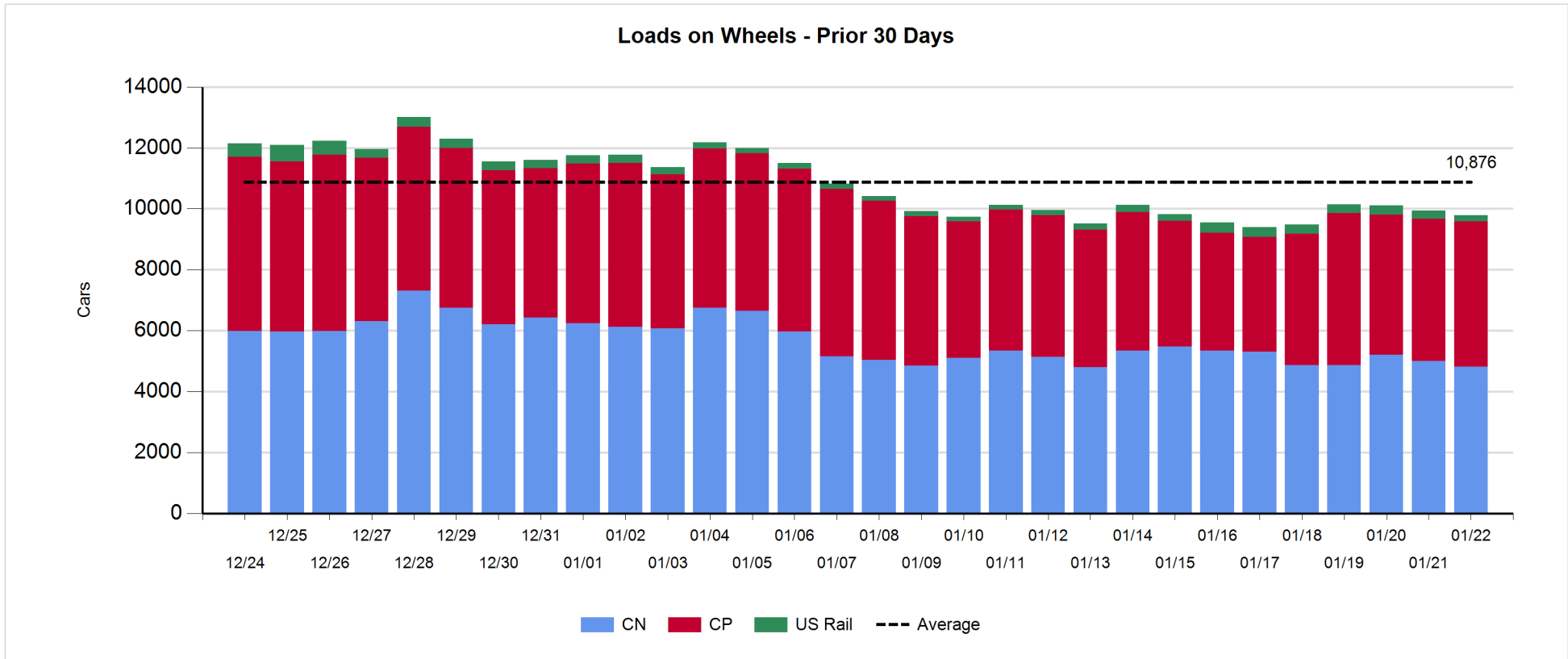
- CN and CP reported a total of 1,010 cars unloaded at the three major ports, now 1% below the trailing 30 day-average. Two days in Week 26 unloads now behind last week's pace by more than 400 unloads, reflecting reduced unloads across all three major ports - Vancouver, Thunder Bay and Prince Rupert.
- Vancouver
  - 792 unloads reported by CN and CP at the Port of Vancouver; CN - 439 and CP - 353. Two days in Week 26 unloads are tracking behind last week's performance by 150 unloads.
  - There are more than 1,250 cars on site at Vancouver with 800 cars arriving at the port in the last 24 hours.
  - CN and CP have 1,150 cars in British Columbia en route to Vancouver, with more than 500 cars at Kamloops and west, and 52% of traffic moving on CP.
- Prince Rupert
  - Prince Rupert reported 152 unloads, now behind last week's unloads after two days by 150 unloads.
  - Loads on wheels now above 1,000 cars - now at 1,855 cars.
  - There are more than 600 cars west of Jasper en route to Prince Rupert.
  - There are more than 250 cars on site at Prince Rupert with 300 cars arriving at the port in the last 24 hours. Given the structure of the pipeline, there appears to be sufficient cars available to support unloads in the next few days.
- Thunder Bay
  - 66 unloads were reported at Thunder Bay yesterday. Two days in Week 26 unloads are tracking behind last week's pace by more than 100 unloads.
  - There are 150 cars on site at Thunder Bay with 100 cars arriving at the port in the prior 24 hours.
  - There are 4 cars en route to Thunder Bay from Winnipeg and east.

**Daily Loads on Wheels - 1/22/2019**

	E Canada	Prince Rupert	Thunder Bay	USA/MEX	Vancouver	Total
CN	552	1,855	34	156	2,217	4,814
CP	420		251	623	3,467	4,761
Short Line					66	66
US Rail				142		142
	972	1,855	285	921	5,750	9,783

**Change in Loads on Wheels - Prior 24 Hours**

	E Canada	Prince Rupert	Thunder Bay	USA/MEX	Vancouver	Total
CN	-25	148	-41	5	-270	-183
CP	-23		-26	-39	173	85
Short Line	-2				3	1
US Rail				-55		-55
	-50	148	-67	-89	-94	-152

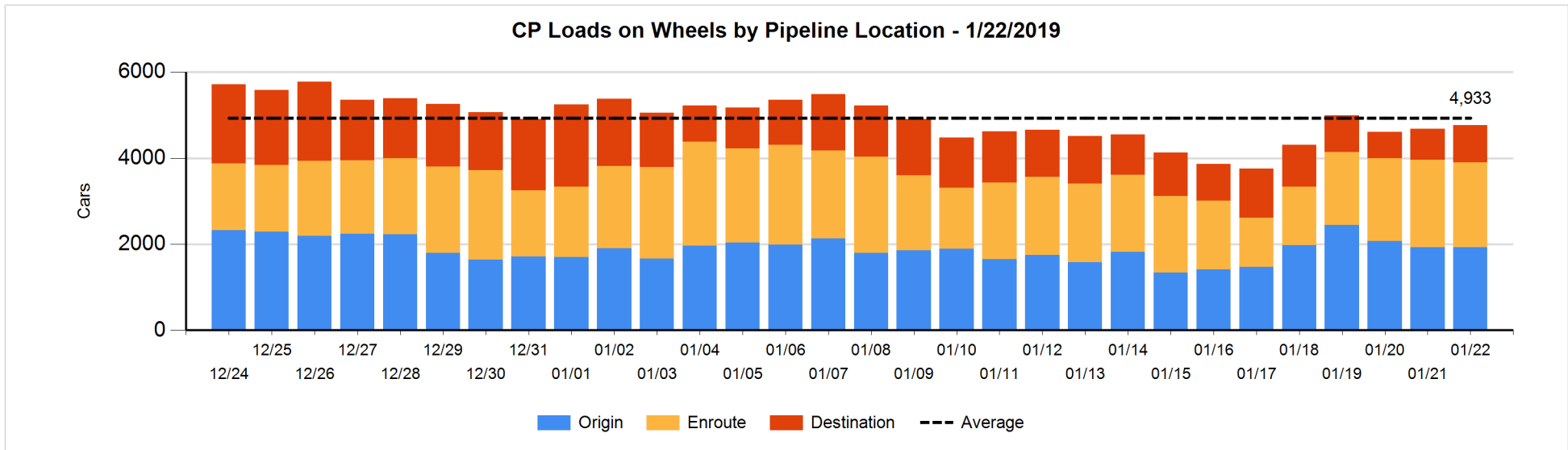
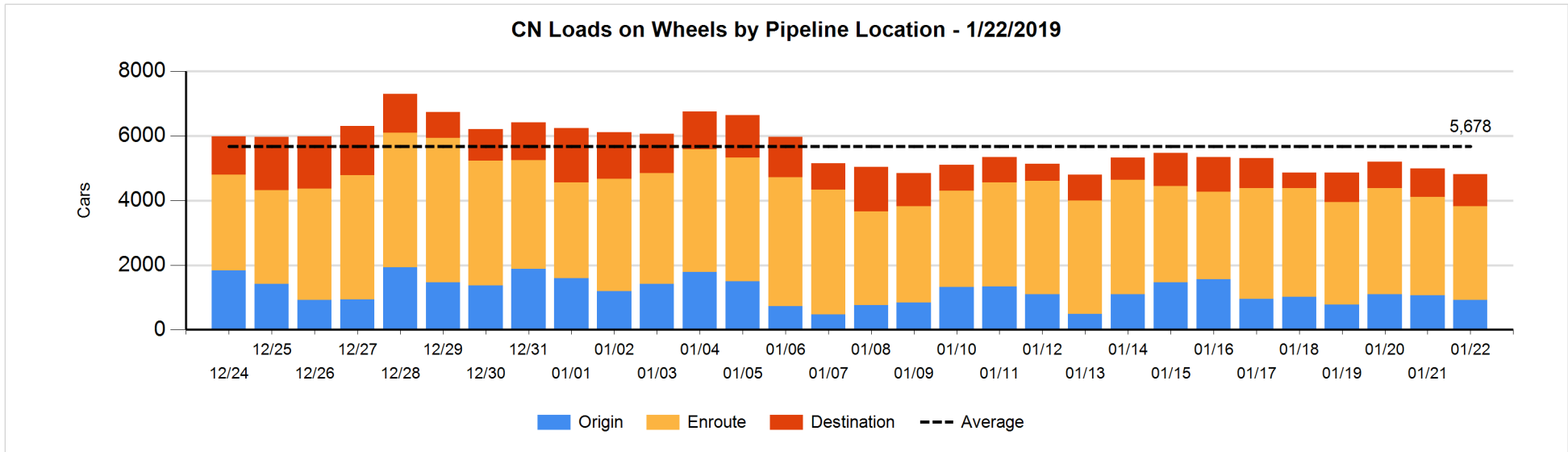


**Daily Loads on Wheels By Pipeline Location - 1/22/2019**

	E Canada	Prince Rupert	Thunder Bay	USA/MEX	Vancouver	Total
CN						
Origin	1	304		11	605	921
Enroute	342	1,278	2	124	1,153	2,899
Destination	209	273	32	21	459	994
	552	1,855	34	156	2,217	4,814
CP						
Origin	188		135	129	1,480	1,932
Enroute	228		2	494	1,241	1,965
Destination	4		114		746	864
	420		251	623	3,467	4,761
US Rail / Short Line						
Origin						
Enroute				63		63
Destination				79	66	145
				142	66	208

**Change in Daily Loads on Wheels By Pipeline Location - Prior 24 Hours**

	E Canada	Prince Rupert	Thunder Bay	USA/MEX	Vancouver	Total
CN						
Origin	0	-234	-1	-1	87	-149
Enroute	-93	225	1	7	-284	-144
Destination	68	157	-41	-1	-73	110
	-25	148	-41	5	-270	-183
CP						
Origin	0		0	-197	195	-2
Enroute	-25		-110	165	-96	-66
Destination	2		84	-7	74	153
	-23		-26	-39	173	85
US Rail / Short Line						
Origin						
Enroute				-60		-60
Destination	-2			5	3	6
	-2			-55	3	-54

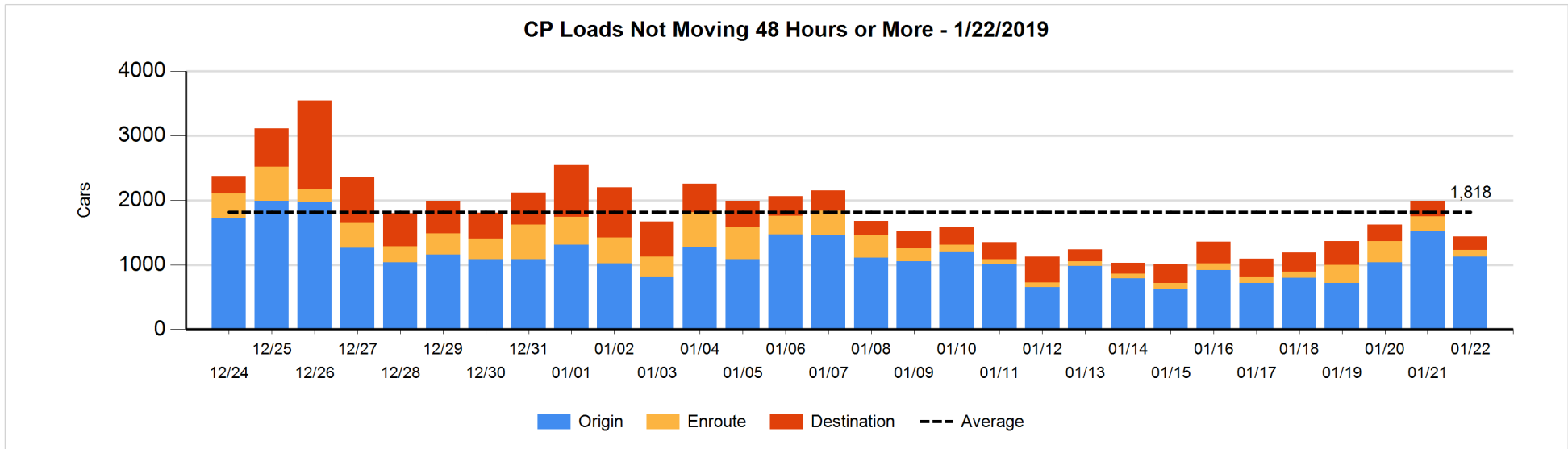
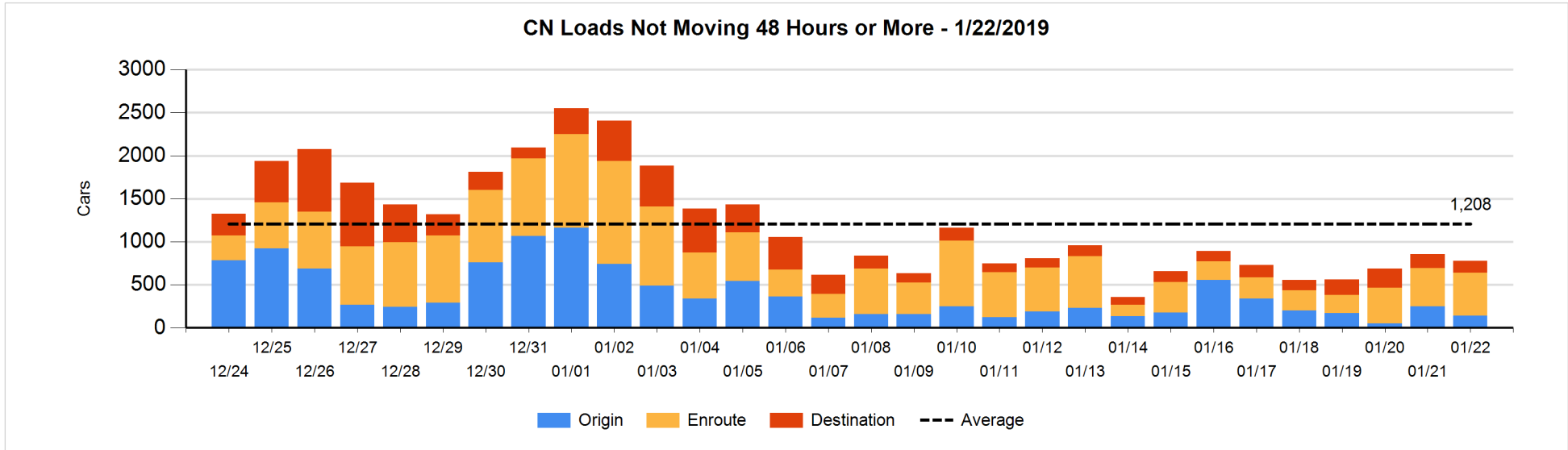


**Loads Not Moving 48 Hours or More - 1/22/2019**

	E Canada	Prince Rupert	Thunder Bay	USA/MEX	Vancouver	Total
CN						
Origin	1	2		7	129	139
Enroute	169	28		52	251	500
Destination	53	4	2	14	67	140
	223	34	2	73	447	779
CP						
Origin	109		111	26	882	1128
Enroute	4			76	21	101
Destination	2		4		203	209
	115		115	102	1106	1438
US Rail / Short Line						
Origin						
Enroute				23		23
Destination				36	31	67
				59	31	90

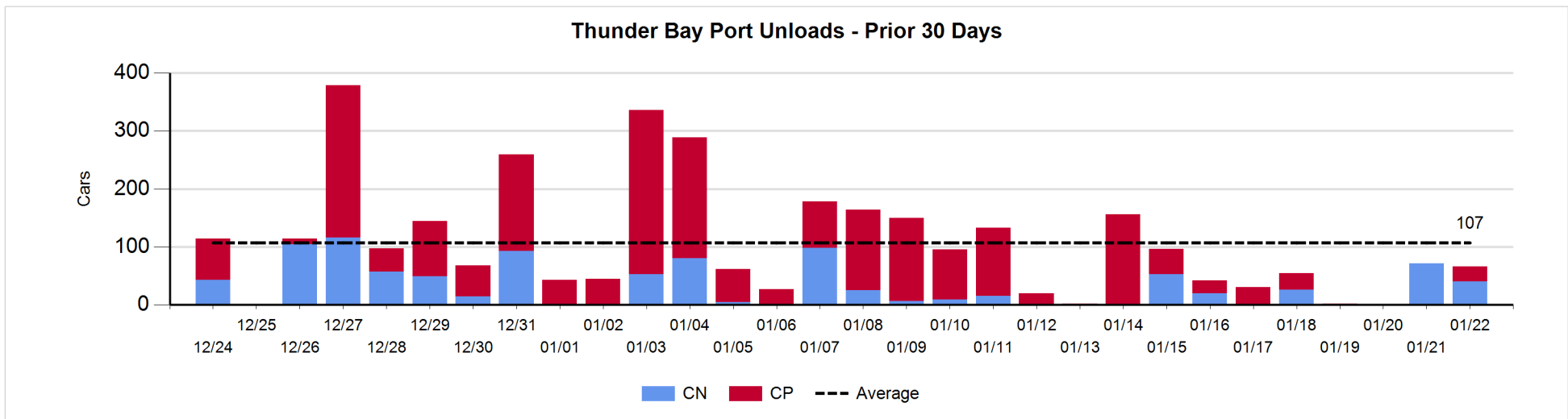
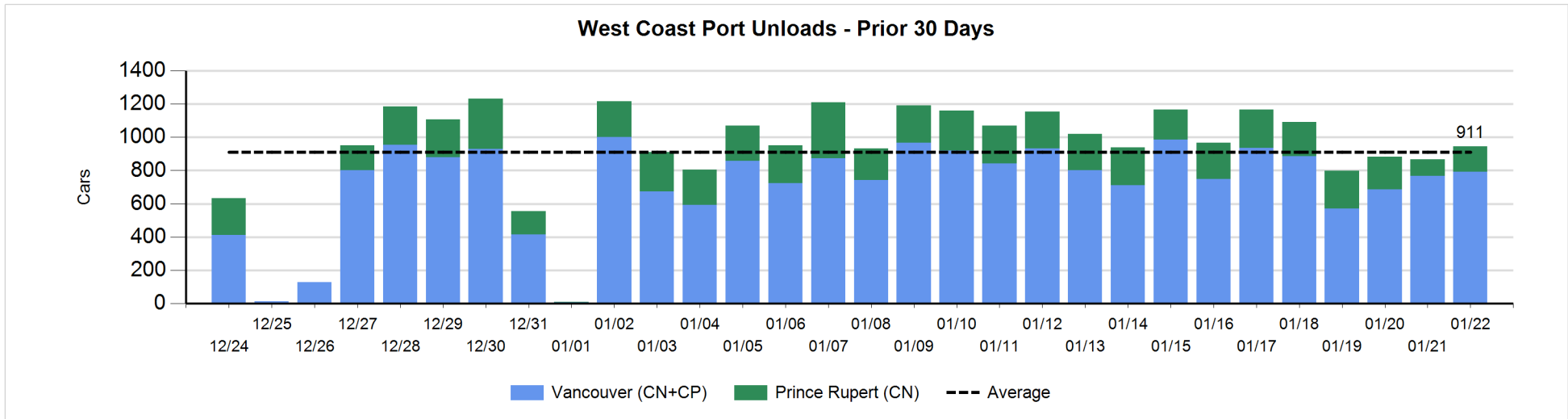
**Change in Loads Not Moving 48 Hours or More - 1/22/2019**

	E Canada	Prince Rupert	Thunder Bay	USA/MEX	Vancouver	Total
CN						
Origin	0	-97	-1	0	-9	-107
Enroute	-23	0	-1	31	47	54
Destination	-12	0	1	1	-11	-21
	-35	-97	-1	32	27	-74
CP						
Origin	-52		0	-99	-238	-389
Enroute	1			-36	-97	-132
Destination	0		-9	-7	-12	-28
	-51		-9	-142	-347	-549
US Rail / Short Line						
Origin						
Enroute				-5		-5
Destination				-8	8	0
				-13	8	-5



**Port Unloads - 1/22/2019**

	Prince Rupert	Vancouver	West Coast Total	Thunder Bay	Total
CN	152	439	591	40	631
CP		353	353	26	379
	152	792	944	66	1,010





**Port Terminal Status**

**Vancouver**

Daily Activity for 1/22/2019

	Cars Arrived	Cars Received in Interchange	Cars Delivered in Interchange	Cars Placed for Unloading	Loads on Wheels at Destination As of 1/22/2019
CN	328	116	140	279	459
CP	477	137	120	308	746
SRY		7		12	66

**Port Unloads**

	01/22	01/21	Week To Date	Last Week
CN	439	342	781	2,542
CP	353	424	777	2,978
SRY	9	3	12	75

**Age Profile of Loaded Cars Waiting Placement for Unloading**

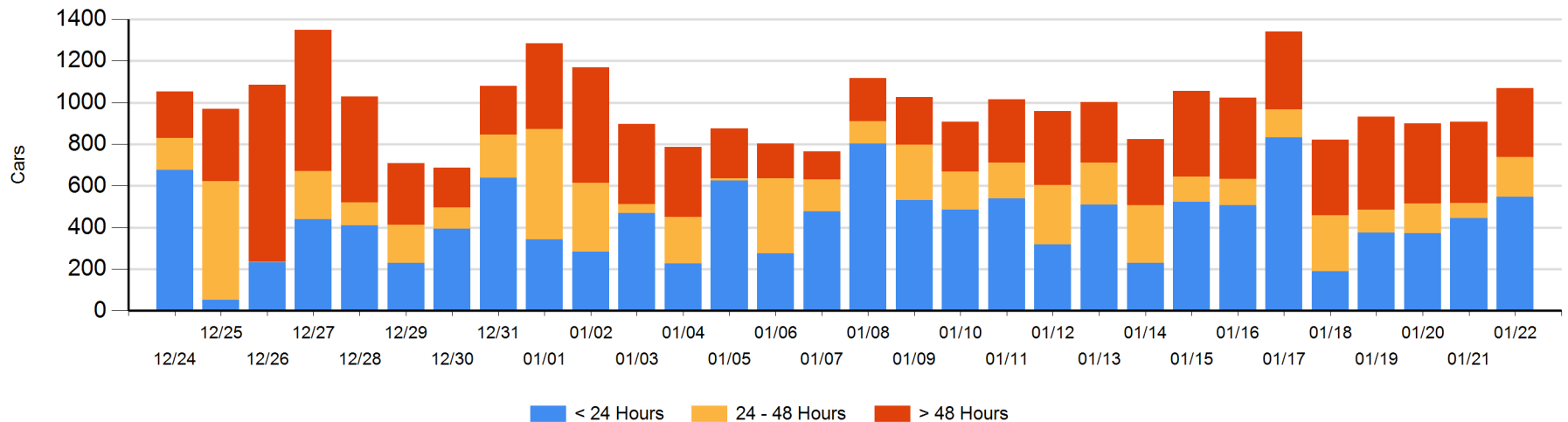
**Today**

	< 24 Hrs	24 - 48 Hrs	> 48-72 Hrs	> 72 Hrs	Total On Hand
CN	181	148	53	97	479
CP	365	45	19	161	590
SRY				1	1

**Change in Last 24 Hours**

	< 24 Hrs	24-48 Hrs	48 - 72 Hrs	> 72 Hrs
CN	-176	95	-2	29
CP	276	26	-66	-16
SRY				-3

**Loaded Cars on Hand Vancouver Waiting for Placement - Last 30 Days All Railways**



**Port Terminal Status**

**Prince Rupert**

Daily Activity for 1/22/2019

	Cars Arrived	Cars Received in Interchange	Cars Delivered in Interchange	Cars Placed for Unloading	Loads on Wheels at Destination As of 1/22/2019
CN	308			306	273

**Port Unloads**

	01/22	01/21	Week To Date	Last Week
CN	152	101	253	1,489

**Age Profile of Loaded Cars Waiting Placement for Unloading**

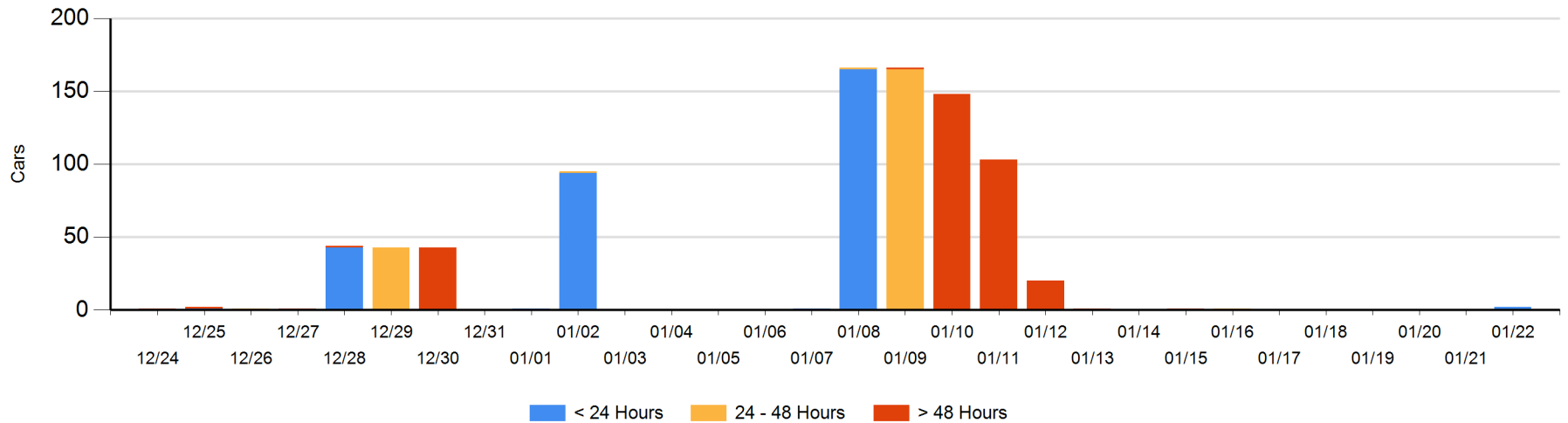
**Today**

	< 24 Hrs	24 - 48 Hrs	> 48-72 Hrs	> 72 Hrs	Total On Hand
CN	2				2

**Change in Last 24 Hours**

	< 24 Hrs	24-48 Hrs	48 - 72 Hrs	> 72 Hrs
CN	2			

Loaded Cars on Hand Prince Rupert Waiting for Placement - Last 30 Days All Railways



**Port Terminal Status**

**Thunder Bay**

Daily Activity for 1/22/2019

	Cars Arrived	Cars Received in Interchange	Cars Delivered in Interchange	Cars Placed for Unloading	Loads on Wheels at Destination As of 1/22/2019
CN					32
CP	110			17	114

**Port Unloads**

	01/22	01/21	Week To Date	Last Week
CN	40	71	111	99
CP	26		26	281

**Age Profile of Loaded Cars Waiting Placement for Unloading**

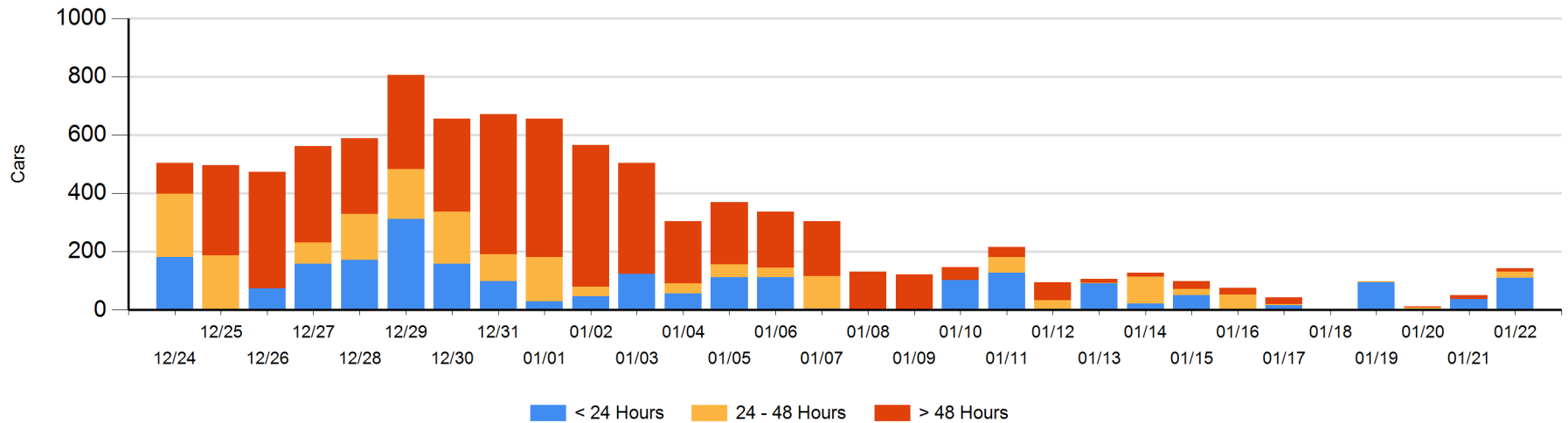
**Today**

	< 24 Hrs	24 - 48 Hrs	> 48-72 Hrs	> 72 Hrs	Total On Hand
CN		21		9	30
CP	110			3	113

**Change in Last 24 Hours**

	< 24 Hrs	24-48 Hrs	48 - 72 Hrs	> 72 Hrs
CN	-21	21	-9	9
CP	93			0

**Loaded Cars on Hand Thunder Bay Waiting for Placement - Last 30 Days All Railways**



## Measurement Definitions

Loads on Wheels	<p>Count of loaded rail cars including all rail cars that have been released loaded at origin and have not been reported by the railway as unloaded at destination.</p> <p>Counts include all rail cars (hopper cars and boxcars) moving within a pipeline.</p>
Loads Not Moving	<p>Loaded rail cars for which the railways have not reported a movement event for 48 hours or more whether the rail car is at origin, enroute or at destination.</p>
Port Unloads	<p>Count of rail cars reported by railways as unloaded at the western port destinations of Vancouver, Prince Rupert and Thunder Bay.</p> <p>Unload counts include all rail cars (hopper cars and boxcars) unloaded by all receivers including major port terminals, transloaders and other receivers.</p>
Cars Arrived	<p>Count of rail cars reported as arrived at the destination railway terminal.</p>
Cars Received in Interchange	<p>Count of rail cars received in interchange by each railway within a destination railway terminal. Interchange activity is tracked for the Vancouver and Thunder Bay pipelines as applicable.</p>
Cars Delivered in Interchange	<p>Count of rail cars delivered in interchange by each railway within a destination railway terminal. Interchange activity is tracked for the Vancouver and Thunder Bay pipelines as applicable.</p>
Cars Placed for Unloading	<p>Count of rail cars reported by the railways as placed loaded at the receiver's facility for unloading.</p>
Loads on Wheels at Destination	<p>Count of rail cars that remain under load within the destination railway terminal including rail cars that have been reported as placed for unloading but not yet reported as unloaded.</p>
Waiting Placement for Unloading	<p>Count of rail cars that have been reported as arrived at the destination railway terminal but not reported as placed for unloading by the railway.</p> <p>For the Ports of Vancouver, Prince Rupert and Thunder Bay the count of rail cars waiting placement for unloading is categorized by age – i.e. the elapsed time from arrival at destination to the current report date.</p>