

## SPEED READ

- Loads on wheels decreased overnight, reflecting reduced CP traffic offset by an increase in CN volumes. On a net basis, volumes declined due to lower traffic across all corridors other than Thunder Bay.
- Network fluidity deteriorated overnight, led by an increase in idle car counts on both CN and CP by 60% (+420) and 25% (+336), respectively. The total count of cars for 4+ days on both railways increased 43% (+375) overnight - now at 1,253 cars.
- Week 26 unloads finished behind prior week's performance by more than 350 unloads, marking reduced unloads across all three major ports - Vancouver, Thunder Bay and Prince Rupert.

## Loads on Wheels

- Loads on wheels declined 2% (-169) overnight, due to reduced traffic on CP offset by higher volumes on CN - combined total at 10,155 and 4% below the trailing 30-day average.
- On a net basis, the decline in loads on wheels reflects lower volumes across all corridors other than Thunder Bay.
- CN volumes gained 2% (+112) overnight, with higher volumes in the Vancouver corridor offset by reduced volumes in the Prince Rupert and E. Canada corridors. System wide CN loads on wheels now at 5,146 and 6% below the trailing 30-day average.
- CP volumes declined 7% (-357) overnight, driven by a decline in volumes across all corridors other than Thunder Bay. CP system wide loads on wheels currently at 4,779 and 1% below the trailing 30-day average.
- Vancouver now at 6,520, fell slightly by 1% (-78) overnight, now 3% below the trailing 30-day average.
- The Prince Rupert pipeline presently at 1,727, declined for the fifth consecutive day, down 2% (-41) overnight, and 10% above the trailing 30-day average.
- Thunder Bay volumes remained unchanged (0) overnight - currently at 122, the lowest seen in the last 30 days, and 78% below the trailing 30-day average, with 97% of traffic moving on CP.

## Hopper Car Rationing

- No hopper car rationing was reported for either CN or CP in week 25.

## Loads Not Moving

- **The count of cars not moving for 48+ hours increased 38% (+756) overnight, marking higher counts on both CN and CP. Idle car counts currently at 2,773 and 2% above the trailing 30-day average.**
- CN
  - **The count of idle cars for 48+ hours increased significantly by 60% (+420) overnight - presently at 1,117 cars.**
  - The number of cars idle for 4+ days surged by 62% (+170) overnight - now at 446 cars.
  - The count of cars not moving for 7+ days declined 7% (-10) overnight - currently at 127 cars.
  - Vancouver represents 27% of all idle cars.
  - In total 16% of all idle cars are dwelling at origin locations.
- CP
  - **CP idle car counts for 48+ hours increased 25% (+336) overnight - currently at 1,656 cars.**
  - The number of cars idle for 4+ days rose 34% (+205) overnight - currently at 807 cars.
  - The number of cars idle for 7+ days declined significantly by 53% (-124) overnight - presently at 112 cars.

- Vancouver accounts for 68% of all idle cars.
- In total 67% of all idle cars are dwelling at origin locations.

### **Port Performance**

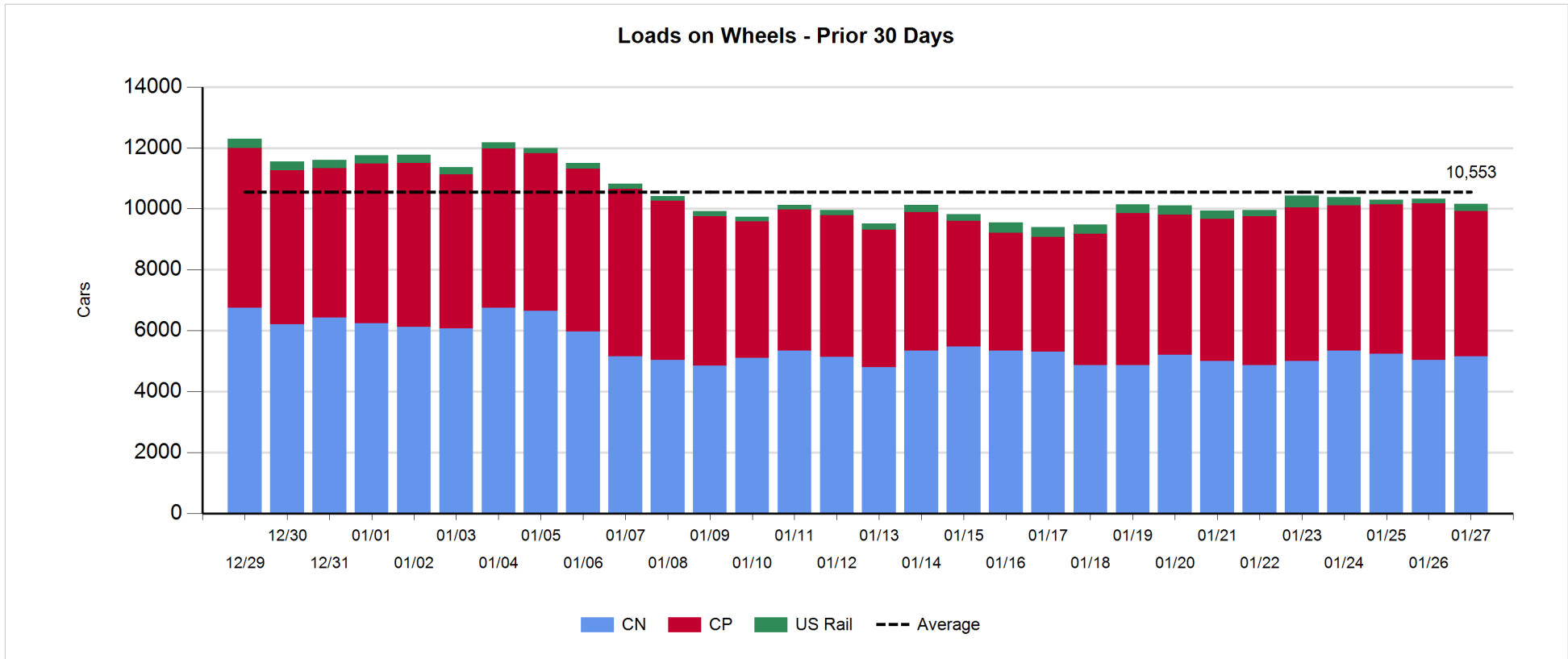
- CN and CP reported a total of 1,017 cars unloaded at the three major ports, now 5% below the trailing 30 day-average. Week 26 unloads finished behind last week's pace by more than 350 unloads, marking reduced unloads across all three major ports - Vancouver, Thunder Bay and Prince Rupert.
- Vancouver
  - 853 unloads reported by CN and CP at the Port of Vancouver; CN - 406 and CP - 447. Week 26 unloads ended behind last week's performance by about 100 unloads.
  - There are 900 cars on site at Vancouver with 650 cars arriving at the port in the last 24 hours.
  - CN and CP have more than 1,650 cars in British Columbia en route to Vancouver, with 700 cars at Kamloops and west, and 58% of traffic moving on CP.
- Prince Rupert
  - Prince Rupert reported 164 unloads, concluded behind last week's unloads by 200 unloads.
  - Loads on wheels now above 1,000 cars - now at 1,727 cars.
  - There are more than 950 cars west of Jasper en route to Prince Rupert.
  - There are about 300 cars on site at Prince Rupert with more than 200 cars arriving at the port in the last 24 hours. Given the structure of the pipeline, there appears to be sufficient cars available to support unloads in the next few days.
- Thunder Bay
  - Zero unloads were reported at Thunder Bay yesterday. Week 26 unloads concluded behind last week's pace by more than 50 unloads.
  - There are 7 cars on site at Thunder Bay with 1 cars arriving at the port in the prior 24 hours.
  - There are more than 100 cars en route to Thunder Bay from Winnipeg and east.

**Daily Loads on Wheels - 1/27/2019**

	E Canada	Prince Rupert	Thunder Bay	USA/MEX	Vancouver	Total
CN	542	1,727	4	178	2,695	5,146
CP	545		118	398	3,718	4,779
Short Line					107	107
US Rail				123		123
	1,087	1,727	122	699	6,520	10,155

**Change in Loads on Wheels - Prior 24 Hours**

	E Canada	Prince Rupert	Thunder Bay	USA/MEX	Vancouver	Total
CN	-20	-41	0	0	173	112
CP	-9		0	-28	-320	-357
Short Line					69	69
US Rail				7		7
	-29	-41	0	-21	-78	-169

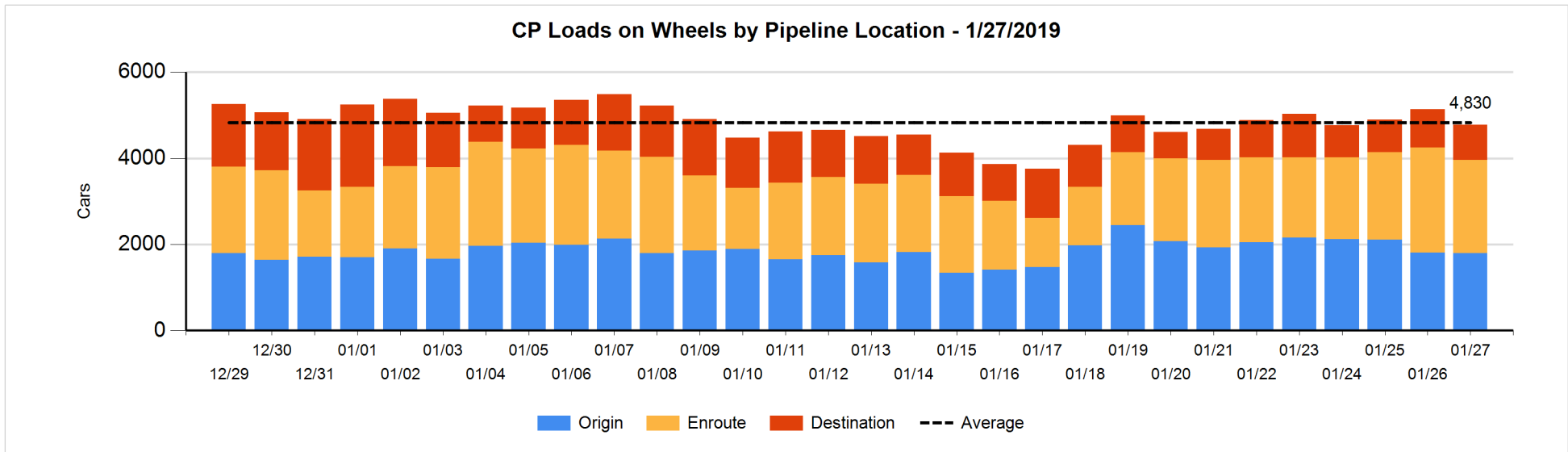
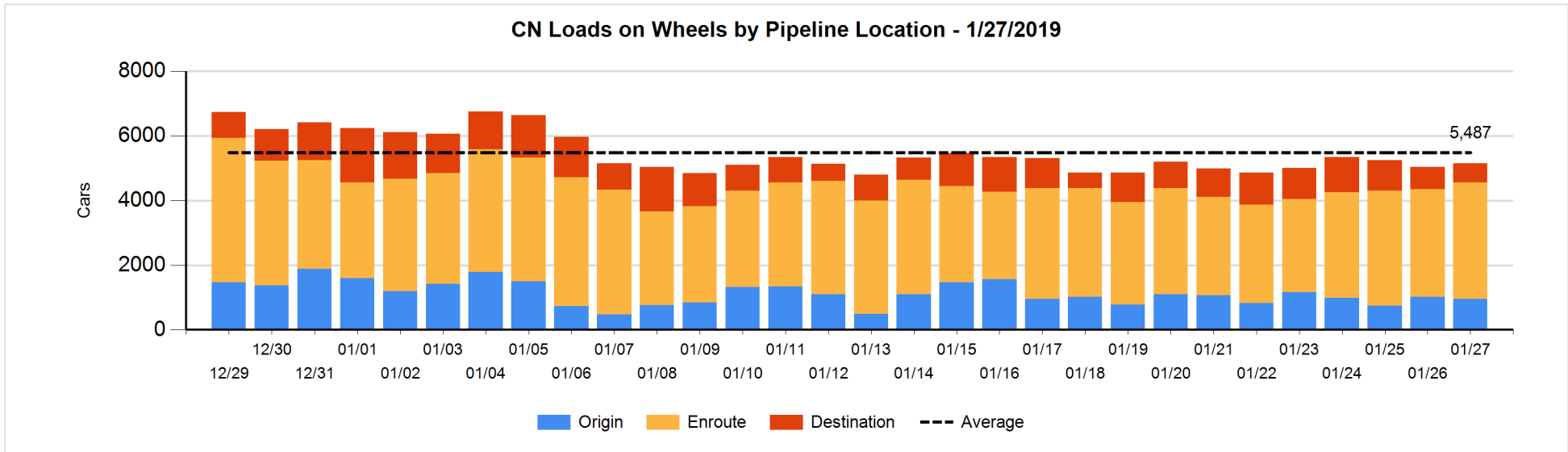


**Daily Loads on Wheels By Pipeline Location - 1/27/2019**

	E Canada	Prince Rupert	Thunder Bay	USA/MEX	Vancouver	Total
CN						
Origin	26	231		16	676	949
Enroute	418	1,209		142	1,838	3,607
Destination	98	287	4	20	182	591
	542	1,727	4	178	2,696	5,147
CP						
Origin	190		1	27	1,577	1,795
Enroute	190		114	334	1,521	2,159
Destination	165		3	37	620	825
	545		118	398	3,718	4,779
US Rail / Short Line						
Origin						
Enroute				75		75
Destination				48	107	155
				123	107	230

**Change in Daily Loads on Wheels By Pipeline Location - Prior 24 Hours**

	E Canada	Prince Rupert	Thunder Bay	USA/MEX	Vancouver	Total
CN						
Origin	0	-74		-61	69	-66
Enroute	-11	-20	-1	60	252	280
Destination	-9	53	1	1	-148	-102
	-20	-41	0	0	173	112
CP						
Origin	0		-1	-11	-1	-13
Enroute	-63		1	-27	-189	-278
Destination	54		0	10	-130	-66
	-9		0	-28	-320	-357
US Rail / Short Line						
Origin						
Enroute				2		2
Destination				5	69	74
				7	69	76

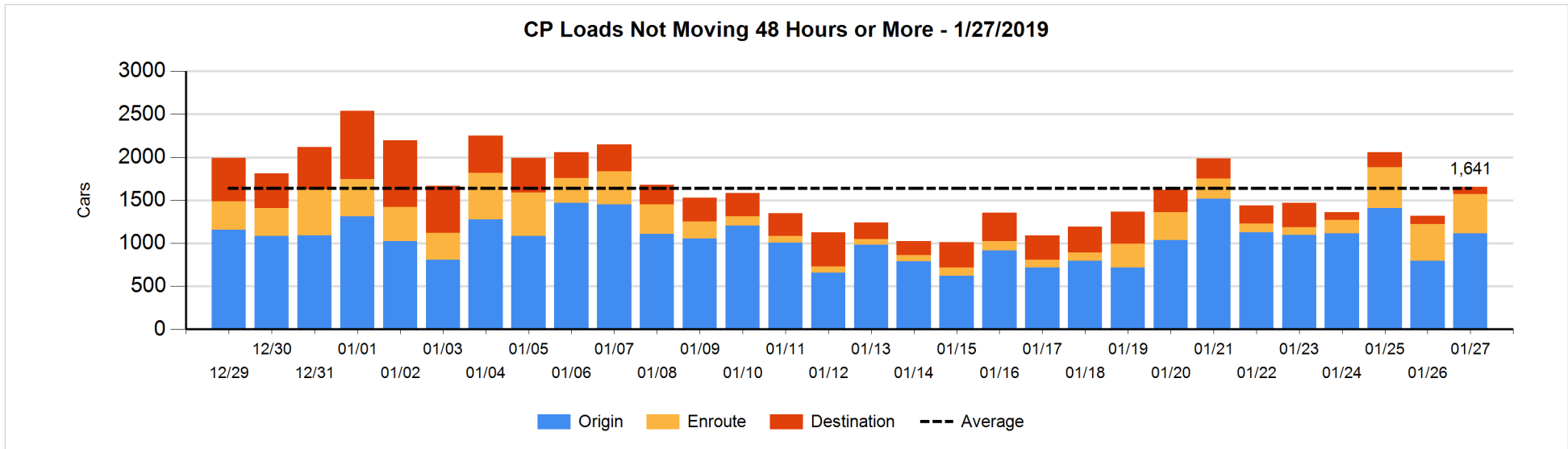
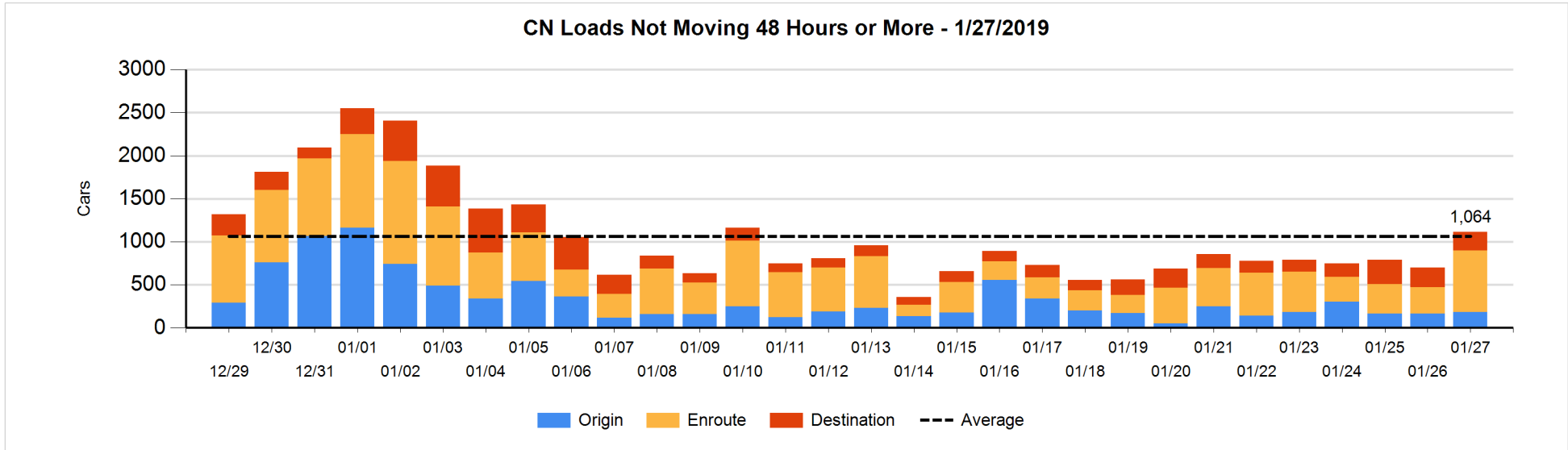


**Loads Not Moving 48 Hours or More - 1/27/2019**

	E Canada	Prince Rupert	Thunder Bay	USA/MEX	Vancouver	Total
<b>CN</b>						
Origin	26	2		16	138	182
Enroute	153	401		20	140	714
Destination	52	118	3	19	29	221
	231	521	3	55	307	1117
<b>CP</b>						
Origin	190		1	27	899	1117
Enroute	114		2	196	140	452
Destination	2		1	2	82	87
	306		4	225	1121	1656
<b>US Rail / Short Line</b>						
Origin						
Enroute				44		44
Destination				37	32	69
				81	32	113

**Change in Loads Not Moving 48 Hours or More - 1/27/2019**

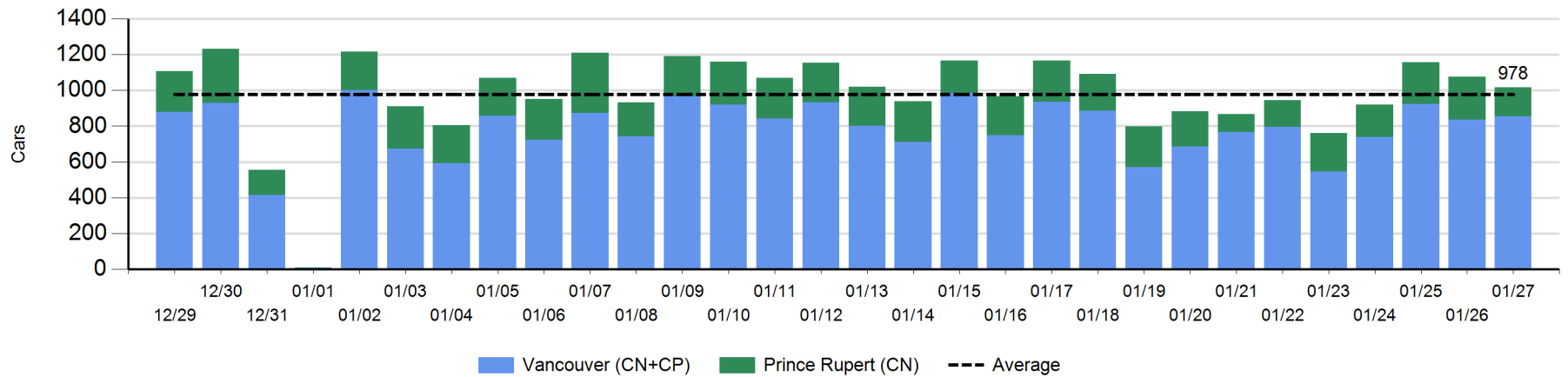
	E Canada	Prince Rupert	Thunder Bay	USA/MEX	Vancouver	Total
<b>CN</b>						
Origin	0	0		-48	68	20
Enroute	85	330		2	-15	402
Destination	5	-17	1	2	7	-2
	90	313	1	-44	60	420
<b>CP</b>						
Origin	0		-1	1	324	324
Enroute	2		0	15	6	23
Destination	2		0	2	-15	-11
	4		-1	18	315	336
<b>US Rail / Short Line</b>						
Origin						
Enroute				14		14
Destination				1	6	7
				15	6	21



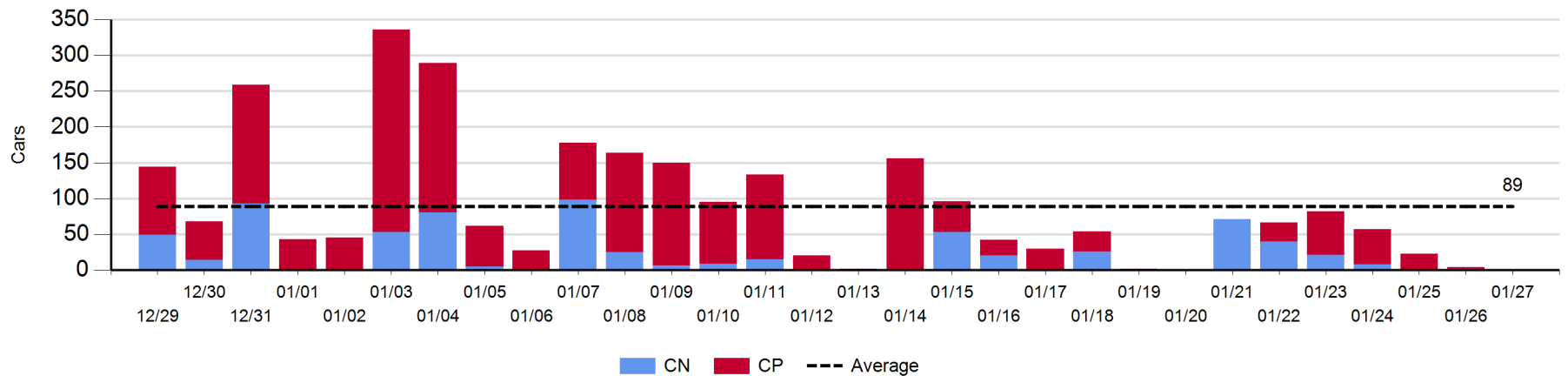
**Port Unloads - 1/27/2019**

	Prince Rupert	Vancouver	West Coast Total	Thunder Bay	Total
CN	164	406	570		570
CP		447	447		447
	164	853	1,017		1,017

**West Coast Port Unloads - Prior 30 Days**



**Thunder Bay Port Unloads - Prior 30 Days**





**Port Terminal Status**

**Vancouver**

Daily Activity for 1/27/2019

	Cars Arrived	Cars Received in Interchange	Cars Delivered in Interchange	Cars Placed for Unloading	Loads on Wheels at Destination As of 1/27/2019
CN	11	258		443	182
CP	629		307	409	620
SRY	4	49			107

**Port Unloads**

	01/27	01/26	Week To Date	Last Week
CN	406	457	2,670	2,542
CP	447	379	2,786	2,978
SRY	1	10	57	75

**Age Profile of Loaded Cars Waiting Placement for Unloading**

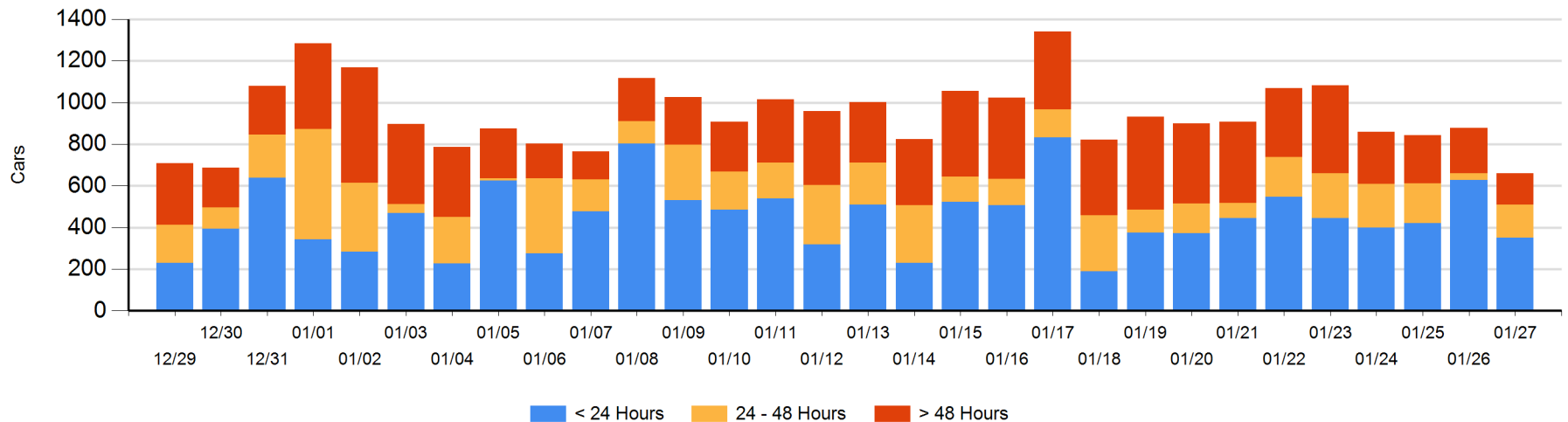
**Today**

	< 24 Hrs	24 - 48 Hrs	> 48-72 Hrs	> 72 Hrs	Total On Hand
CN	11	64	9	16	100
CP	337	93	23	103	556
SRY	4				4

**Change in Last 24 Hours**

	< 24 Hrs	24-48 Hrs	48 - 72 Hrs	> 72 Hrs
CN	-307	54	-48	-10
CP	28	70	-27	17
SRY	4			

**Loaded Cars on Hand Vancouver Waiting for Placement - Last 30 Days All Railways**



**Port Terminal Status**

**Prince Rupert**

Daily Activity for 1/27/2019

	Cars Arrived	Cars Received in Interchange	Cars Delivered in Interchange	Cars Placed for Unloading	Loads on Wheels at Destination As of 1/27/2019
CN	217			217	287

**Port Unloads**

	01/27	01/26	Week To Date	Last Week
CN	164	239	1,286	1,489

**Age Profile of Loaded Cars Waiting Placement for Unloading**

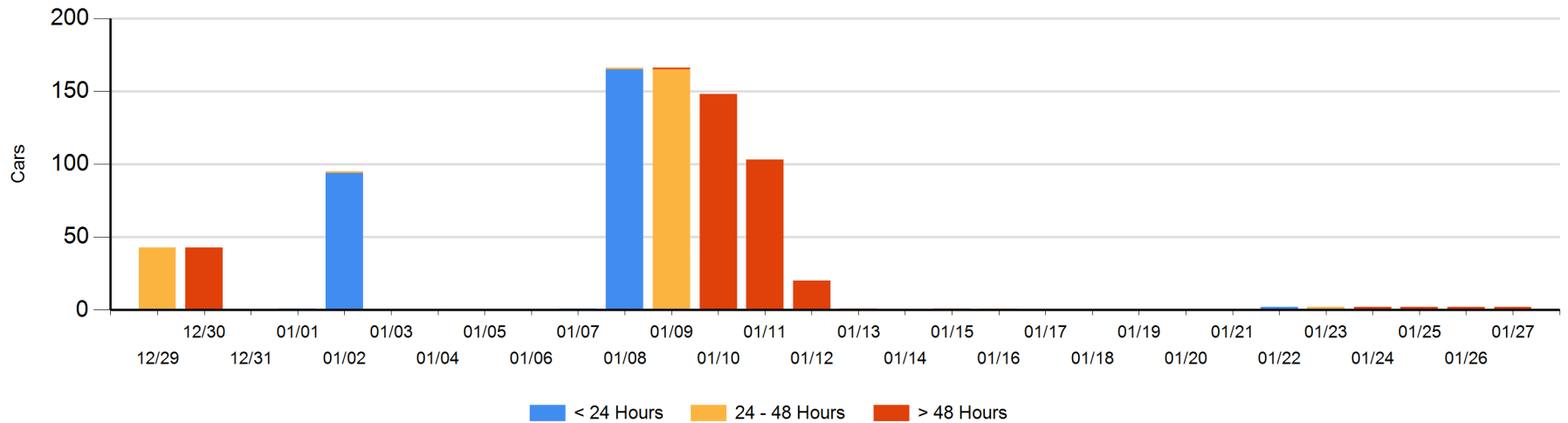
**Today**

	< 24 Hrs	24 - 48 Hrs	> 48-72 Hrs	> 72 Hrs	Total On Hand
CN				2	2

**Change in Last 24 Hours**

	< 24 Hrs	24-48 Hrs	48 - 72 Hrs	> 72 Hrs
CN				0

Loaded Cars on Hand Prince Rupert Waiting for Placement - Last 30 Days All Railways



**Port Terminal Status**

**Thunder Bay**

Daily Activity for 1/27/2019

	Cars Arrived	Cars Received in Interchange	Cars Delivered in Interchange	Cars Placed for Unloading	Loads on Wheels at Destination As of 1/27/2019
CN		1			4
CP					3

**Port Unloads**

	01/27	01/26	Week To Date	Last Week
CN		2	142	99
CP		2	161	281

**Age Profile of Loaded Cars Waiting Placement for Unloading**

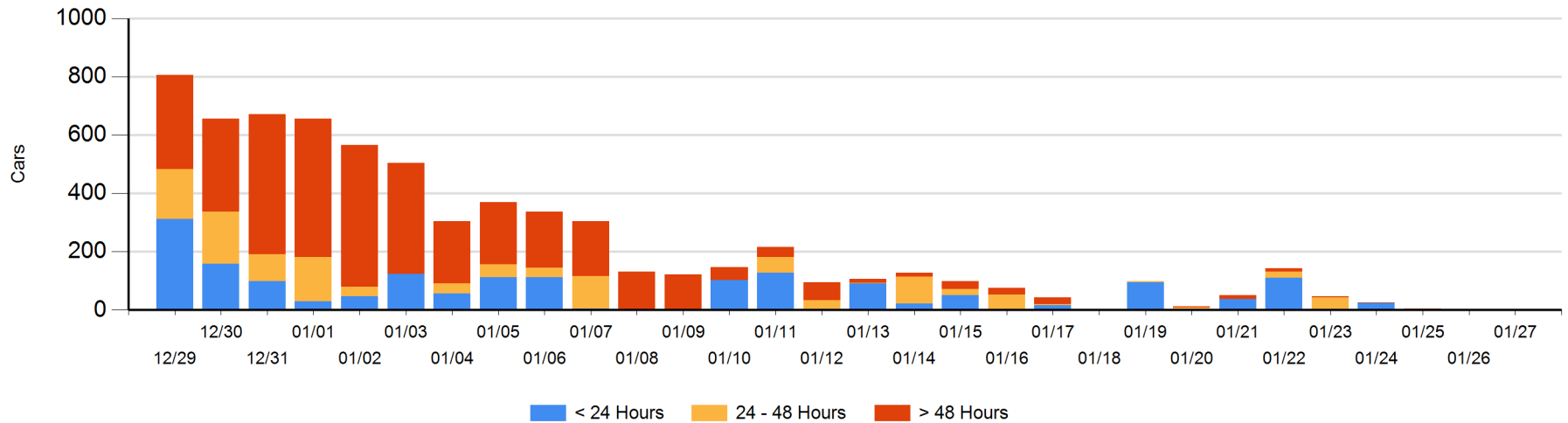
**Today**

	< 24 Hrs	24 - 48 Hrs	> 48-72 Hrs	> 72 Hrs	Total On Hand
CN	1		1		2
CP				1	1

**Change in Last 24 Hours**

	< 24 Hrs	24-48 Hrs	48 - 72 Hrs	> 72 Hrs
CN	1	-1	1	
CP				0

**Loaded Cars on Hand Thunder Bay Waiting for Placement - Last 30 Days All Railways**



## Measurement Definitions

Loads on Wheels	<p>Count of loaded rail cars including all rail cars that have been released loaded at origin and have not been reported by the railway as unloaded at destination.</p> <p>Counts include all rail cars (hopper cars and boxcars) moving within a pipeline.</p>
Loads Not Moving	<p>Loaded rail cars for which the railways have not reported a movement event for 48 hours or more whether the rail car is at origin, enroute or at destination.</p>
Port Unloads	<p>Count of rail cars reported by railways as unloaded at the western port destinations of Vancouver, Prince Rupert and Thunder Bay.</p> <p>Unload counts include all rail cars (hopper cars and boxcars) unloaded by all receivers including major port terminals, transloaders and other receivers.</p>
Cars Arrived	<p>Count of rail cars reported as arrived at the destination railway terminal.</p>
Cars Received in Interchange	<p>Count of rail cars received in interchange by each railway within a destination railway terminal. Interchange activity is tracked for the Vancouver and Thunder Bay pipelines as applicable.</p>
Cars Delivered in Interchange	<p>Count of rail cars delivered in interchange by each railway within a destination railway terminal. Interchange activity is tracked for the Vancouver and Thunder Bay pipelines as applicable.</p>
Cars Placed for Unloading	<p>Count of rail cars reported by the railways as placed loaded at the receiver's facility for unloading.</p>
Loads on Wheels at Destination	<p>Count of rail cars that remain under load within the destination railway terminal including rail cars that have been reported as placed for unloading but not yet reported as unloaded.</p>
Waiting Placement for Unloading	<p>Count of rail cars that have been reported as arrived at the destination railway terminal but not reported as placed for unloading by the railway.</p> <p>For the Ports of Vancouver, Prince Rupert and Thunder Bay the count of rail cars waiting placement for unloading is categorized by age – i.e. the elapsed time from arrival at destination to the current report date.</p>