

SPEED READ

- Loads on wheels declined overnight, marking a decline in both CN and CP volumes. On a net basis, volumes decreased due to lower traffic across all corridors other than E. Canada.
- Network fluidity deteriorated overnight, led by an increase in idle car counts on both CN and CP by 7% (+48) and 16% (+166), respectively. The total count of cars for 4+ days on both railways gained 28% (+145) overnight - now at 660 cars, the highest seen in the last 30 days.
- One day in Week 49 unloads now behind prior week's performance by more than 232 unloads, marking reduced unloads at all ports.

=====

Loads on Wheels

- Loads on wheels decreased for the third consecutive day, down 7% (-686) overnight, due to lower volumes on both CN and CP - combined total at 8,764 and 1% below the trailing 30-day average.
- On a net basis, the decline in loads on wheels indicates lower traffic across all corridors other than E. Canada.
- CN volumes decreased 8% (-416) overnight, with lower traffic in the Vancouver, Prince Rupert and USA/MEX corridors. System wide CN loads on wheels presently at 4,918 and 5% above the trailing 30-day average.
- CP volumes declined 7% (-270) overnight, driven by a decline in volumes across all corridors other than E. Canada. CP system wide loads on wheels presently at 3,730 and 8% below the trailing 30-day average.
- Vancouver now at 4,701, decreased for the third consecutive day, down 9% (-441) overnight, now 8% below the trailing 30-day average.
- The Prince Rupert pipeline presently at 1,215, declined for the third consecutive day, down 13% (-177) overnight, and 3% below the trailing 30-day average.
- Thunder Bay volumes declined 3% (-57) overnight - presently at 1,890 and 25% above the trailing 30-day average, with 50% of traffic moving on CP.

Hopper Car Rationing

- CN rationed no hopper cars in week 47.

Loads Not Moving

- **The count of cars not moving for 48+ hours increased 12% (+214) overnight and have now increased for the third consecutive day, marking higher counts on both CN and CP. Idle car counts presently at 2,000, the highest seen in the last 30 days, and 89% above the trailing 30-day average.**
- CN
 - **The count of idle cars for 48+ hours increased 7% (+48) overnight - presently at 776 cars, the highest seen in the last 30 days.**
 - The number of cars idle for 4+ days decreased 10% (-36) overnight - presently at 309 cars.
 - The count of cars not moving for 7+ days gained 37% (+46) overnight - presently at 170 cars, the highest seen in the last 30 days.
 - Vancouver represents 42% of all idle cars.
 - In total 20% of all idle cars are dwelling at origin locations.
- CP
 - **CP idle car counts for 48+ hours increased 16% (+166) overnight - presently at 1,224 cars, the highest seen in the last 30 days.**
 - The number of cars idle for 4+ days gained significantly by 106% (+181) overnight - presently at 351 cars.
 - The number of cars idle for 7+ days increased 14% (+17) overnight and have now increased for the fourth consecutive day - presently at 137 cars, the highest seen in the last 30 days.

- Vancouver accounts for 59% of all idle cars.
- In total 16% of all idle cars are dwelling at origin locations.

Port Performance

- CN and CP reported a total of 987 cars unloaded at the three major ports. One day in Week 49 unloads now behind last week's pace by more than 230 unloads, marking reduced unloads across all three major ports - Vancouver, Thunder Bay and Prince Rupert.
- Vancouver
 - 753 unloads reported by CN and CP at the Port of Vancouver; CN - 225 and CP - 528. One day in Week 49 unloads are tracking behind last week's performance by less than 25 unloads.
 - There are 1,250 cars on site at Vancouver with more than 450 cars arriving at the port in the last 24 hours.
 - CN and CP have 900 cars in British Columbia en route to Vancouver, with 400 cars at Kamloops and west, and 69% of traffic moving on CN.
- Prince Rupert
 - Prince Rupert reported 177 unloads, now behind last week's unloads after one day by fewer than 10 unloads.
 - Loads on wheels now above 1,000 cars - currently at 1,215 cars.
 - There are more than 600 cars west of Jasper en route to Prince Rupert.
 - There are less than 200 cars on site at Prince Rupert with more than 200 cars arriving at the port in the last 24 hours.
- Thunder Bay
 - 57 unloads were reported at Thunder Bay yesterday. One day in Week 49 unloads are tracking behind last week's pace by more than 200 unloads.
 - There are more than 1,600 cars on site at Thunder Bay with around 500 cars arriving at the port in the prior 24 hours.
 - There are 250 cars en route to Thunder Bay from Winnipeg and east.

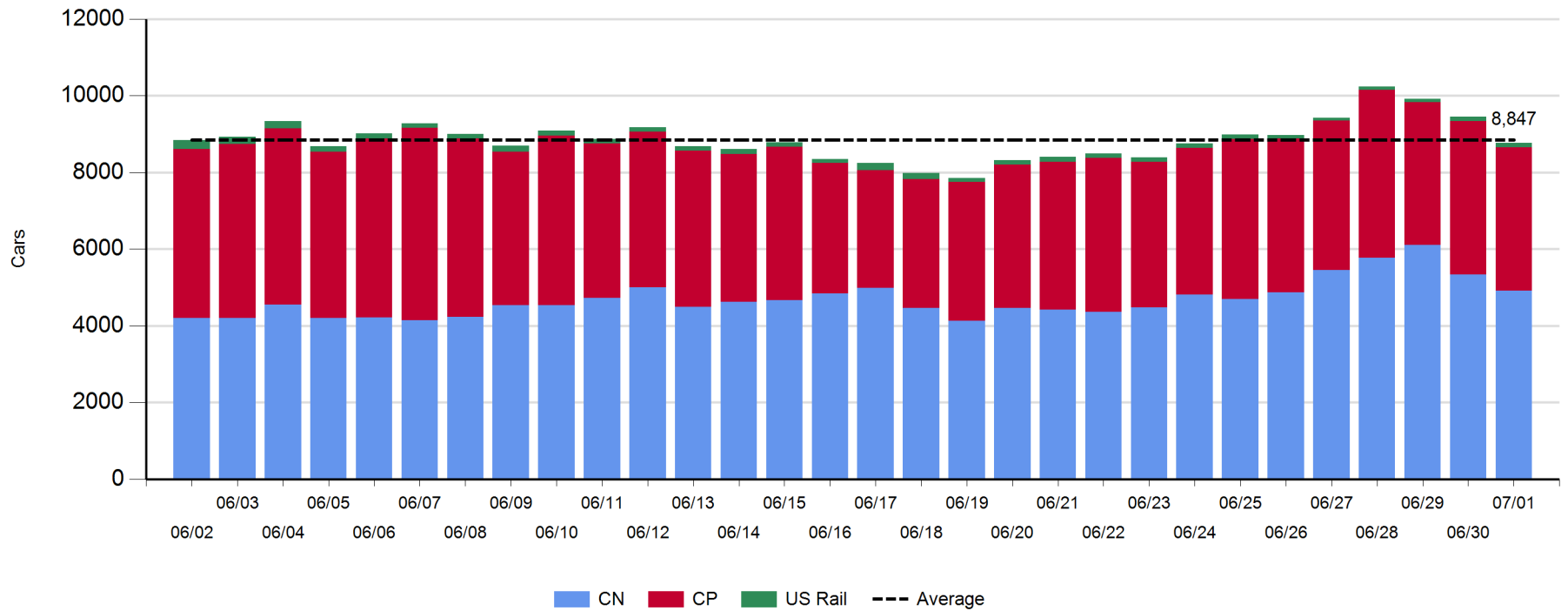
Daily Loads on Wheels - 7/1/2019

	E Canada	Prince Rupert	Thunder Bay	USA/MEX	Vancouver	Total
CN	435	1,215	953	148	2,167	4,918
CP	111		937	202	2,480	3,730
Short Line	11				54	65
US Rail				51		51
	557	1,215	1,890	401	4,701	8,764

Change in Loads on Wheels - Prior 24 Hours

	E Canada	Prince Rupert	Thunder Bay	USA/MEX	Vancouver	Total
CN	0	-177	0	-14	-225	-416
CP	0		-57	-4	-209	-270
Short Line	0				-7	-7
US Rail				3		3
	0	-177	-57	-15	-441	-690

Loads on Wheels - Prior 30 Days

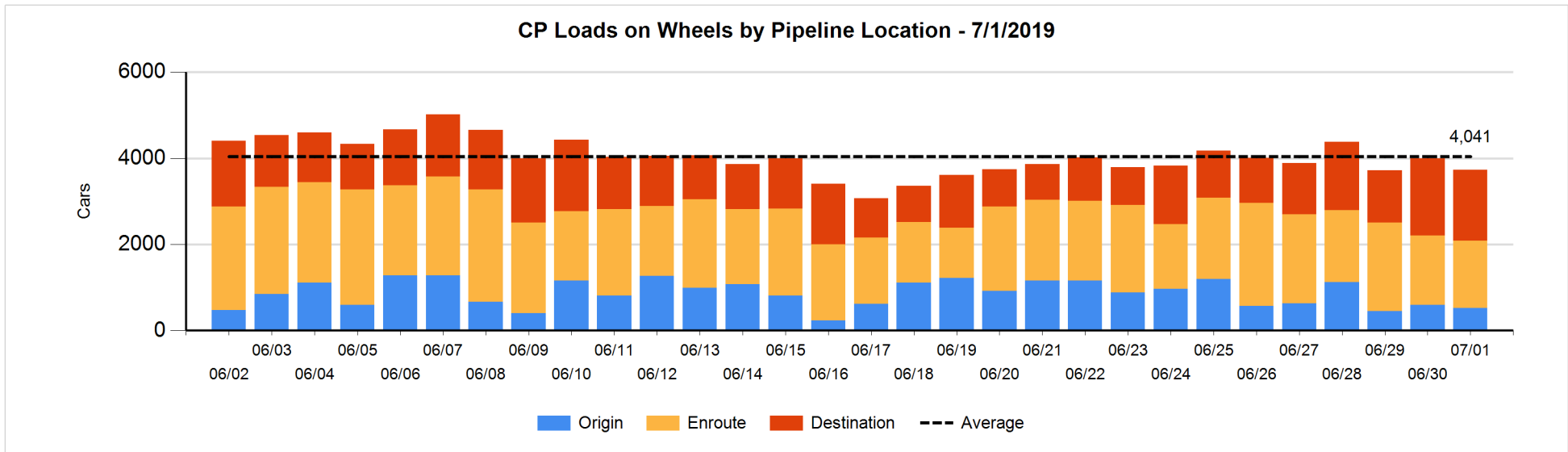
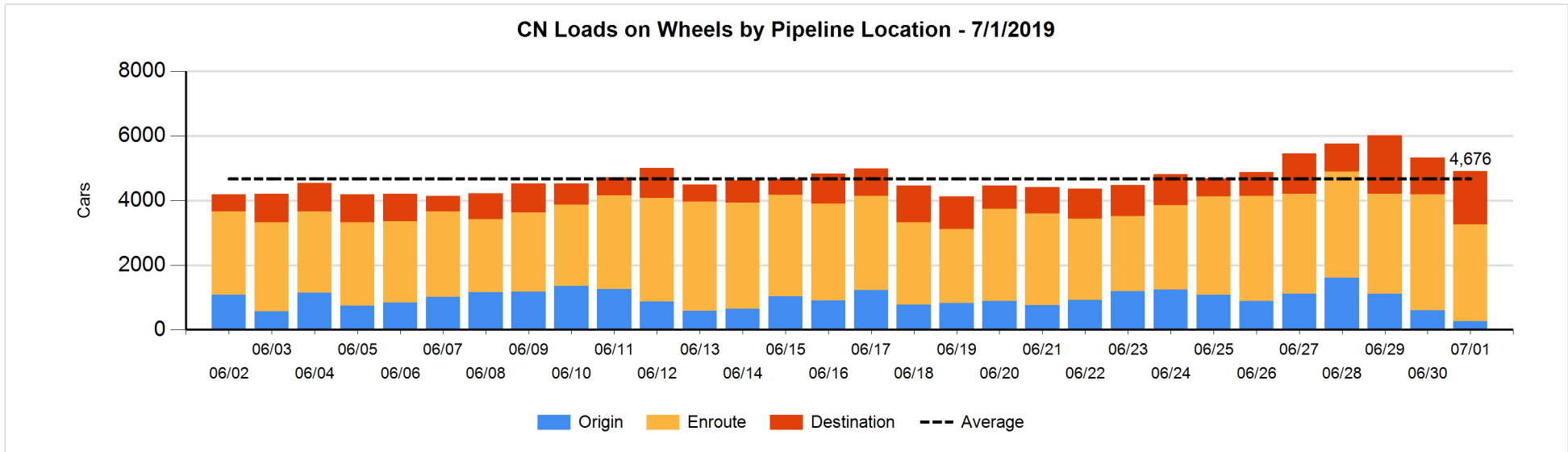


Daily Loads on Wheels By Pipeline Location - 7/1/2019

	E Canada	Prince Rupert	Thunder Bay	USA/MEX	Vancouver	Total
CN						
Origin		32		8	227	267
Enroute	189	996	222	124	1,462	2,993
Destination	246	187	731	16	478	1,658
	435	1,215	953	148	2,167	4,918
CP						
Origin	6		18	1	500	525
Enroute	100		19	186	1,258	1,563
Destination	5		900	15	722	1,642
	111		937	202	2,480	3,730
US Rail / Short Line						
Origin						
Enroute				37		37
Destination	11			14	54	79
	11			51	54	116

Change in Daily Loads on Wheels By Pipeline Location - Prior 24 Hours

	E Canada	Prince Rupert	Thunder Bay	USA/MEX	Vancouver	Total
CN						
Origin	-30	-190		-29	-80	-329
Enroute	-143	-31	-270	6	-165	-603
Destination	173	44	270	9	20	516
	0	-177	0	-14	-225	-416
CP						
Origin	-1		0	-1	-65	-67
Enroute	1		-214	-3	164	-52
Destination	0		157	0	-308	-151
	0		-57	-4	-209	-270
US Rail / Short Line						
Origin						
Enroute				1		1
Destination	0			2	-7	-5
	0			3	-7	-4

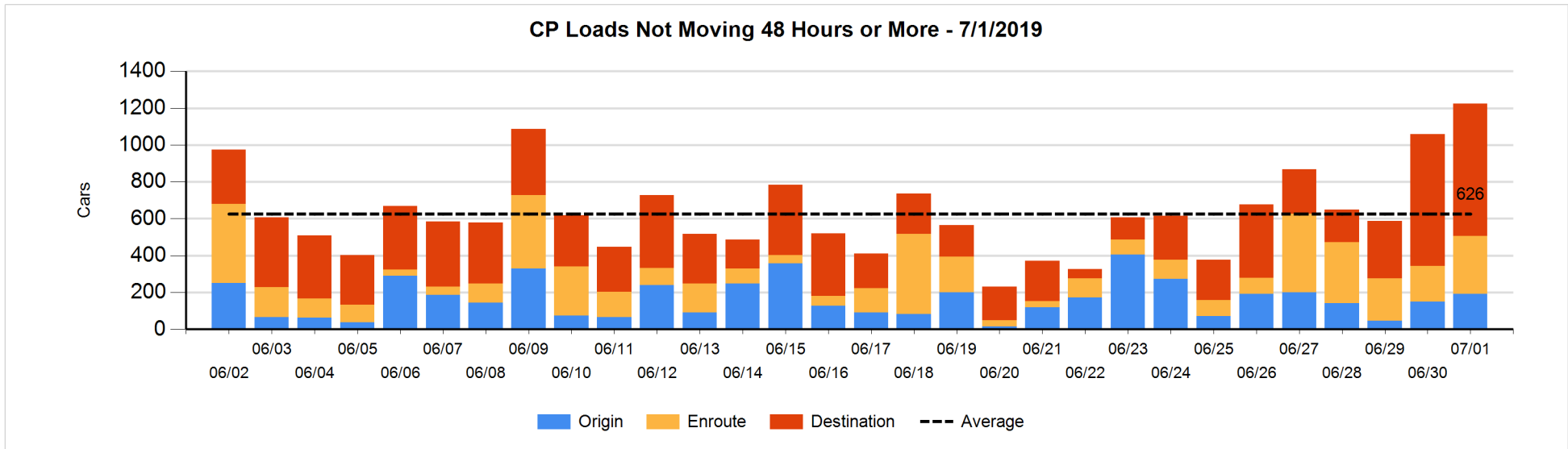
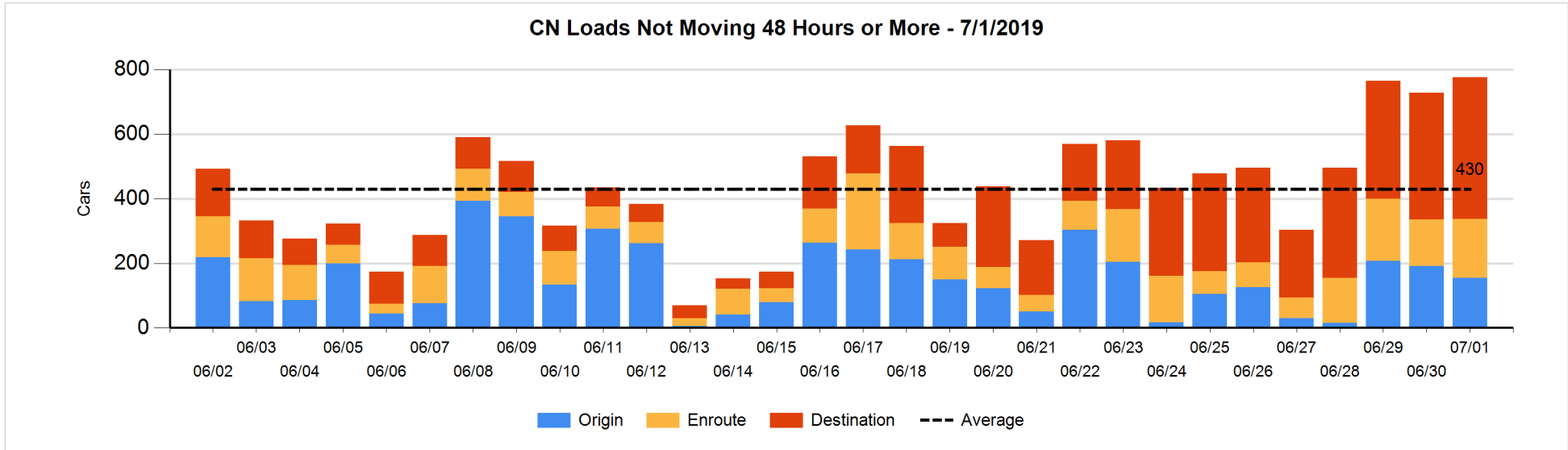


Loads Not Moving 48 Hours or More - 7/1/2019

	E Canada	Prince Rupert	Thunder Bay	USA/MEX	Vancouver	Total
CN						
Origin		32			123	155
Enroute	8	5		1	169	183
Destination	54		345	5	34	438
	62	37	345	6	326	776
CP						
Origin	5		18	1	169	193
Enroute	33		1	25	255	314
Destination	5		416		296	717
	43		435	26	720	1224
US Rail / Short Line						
Origin						
Enroute				15		15
Destination	11			7	22	40
	11			22	22	55

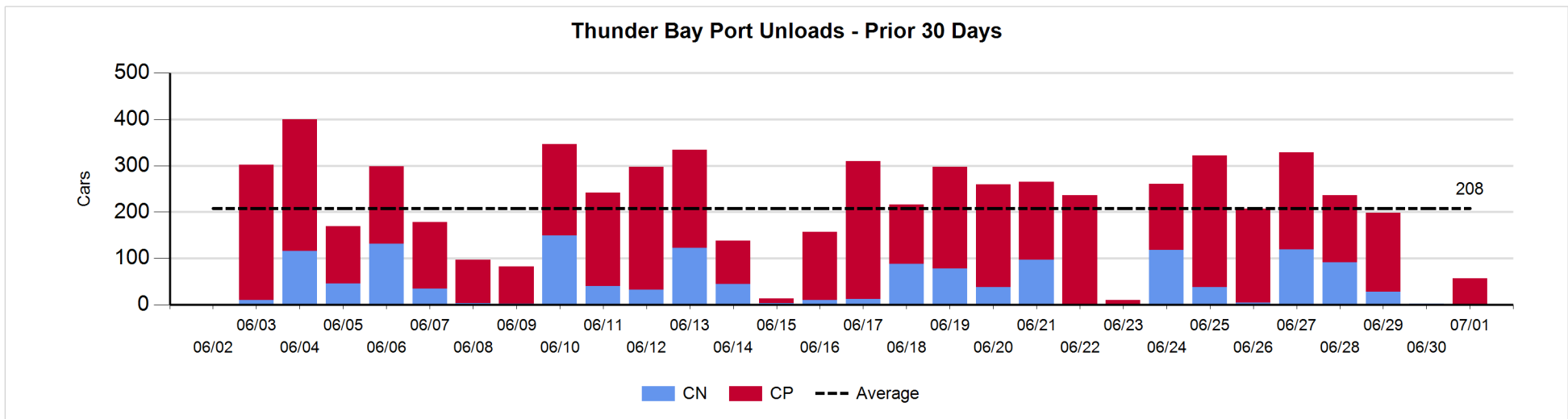
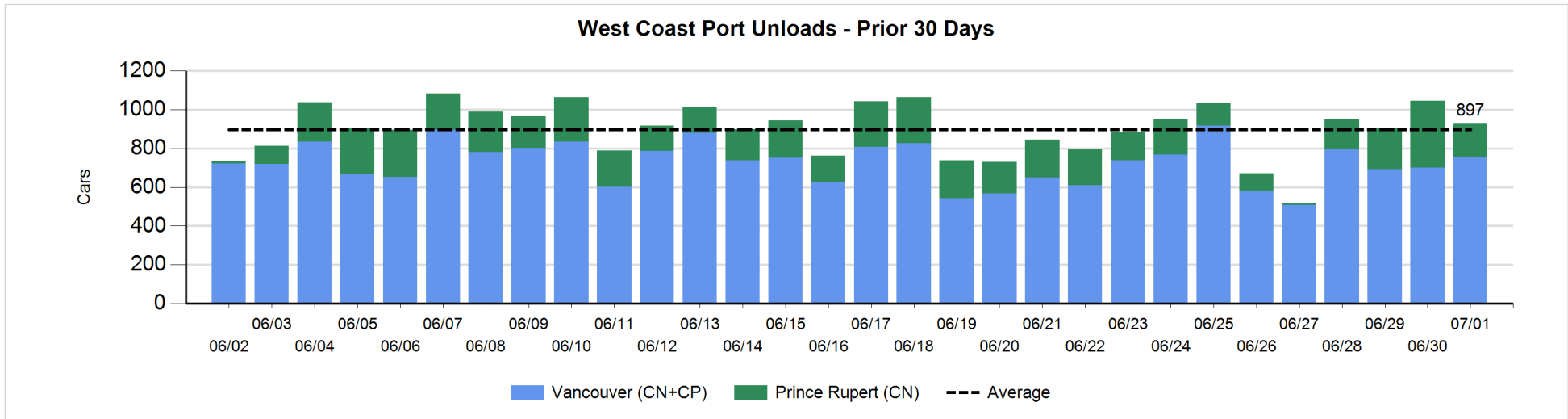
Change in Loads Not Moving 48 Hours or More - 7/1/2019

	E Canada	Prince Rupert	Thunder Bay	USA/MEX	Vancouver	Total
CN						
Origin	-5	-95		-5	69	-36
Enroute	-95	-20		-1	154	38
Destination	33		44	-2	-29	46
	-67	-115	44	-8	194	48
CP						
Origin	-1		0	-1	44	42
Enroute	30		0	-1	92	121
Destination	0		13	-15	5	3
	29		13	-17	141	166
US Rail / Short Line						
Origin						
Enroute				-1		-1
Destination	0			-2	11	9
	0			-3	11	8



Port Unloads - 7/1/2019

	Prince Rupert	Vancouver	West Coast Total	Thunder Bay	Total
CN	177	225	402		402
CP		528	528	57	585
	177	753	930	57	987



Port Terminal Status

Vancouver

Daily Activity for 7/1/2019

	Cars Arrived	Cars Received in Interchange	Cars Delivered in Interchange	Cars Placed for Unloading	Loads on Wheels at Destination As of 7/1/2019
CN	247		4	283	478
CP	220	3		451	722
SRY		1		2	54

Port Unloads

	07/01	06/30	Week To Date	Last Week
CN	225	345	225	2,014
CP	528	355	528	2,944
SRY	8	1	8	49

Age Profile of Loaded Cars Waiting Placement for Unloading

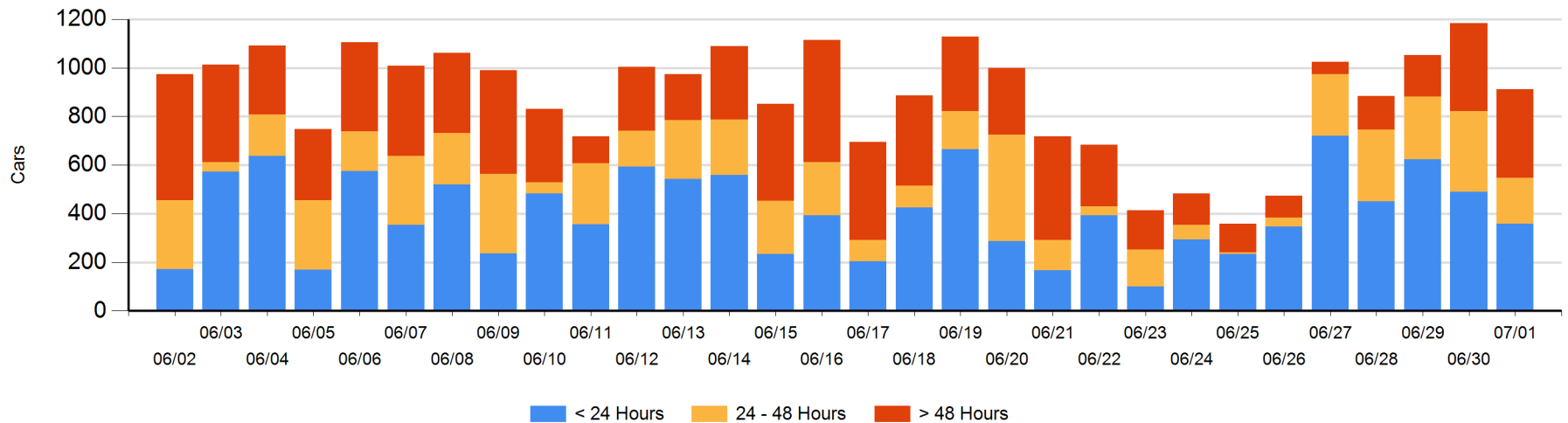
Today

	< 24 Hrs	24 - 48 Hrs	> 48-72 Hrs	> 72 Hrs	Total On Hand
CN	247	37	129	57	470
CP	111	153	59	119	442
SRY					0

Change in Last 24 Hours

	< 24 Hrs	24-48 Hrs	48 - 72 Hrs	> 72 Hrs
CN	125	-219	55	8
CP	-257	77	-70	9
SRY			-1	

Loaded Cars on Hand Vancouver Waiting for Placement - Last 30 Days All Railways



Port Terminal Status

Prince Rupert

Daily Activity for 7/1/2019

	Cars Arrived	Cars Received in Interchange	Cars Delivered in Interchange	Cars Placed for Unloading	Loads on Wheels at Destination As of 7/1/2019
CN	220			304	187

Port Unloads

	07/01	06/30	Week To Date	Last Week
CN	177	345	177	1,115

Age Profile of Loaded Cars Waiting Placement for Unloading

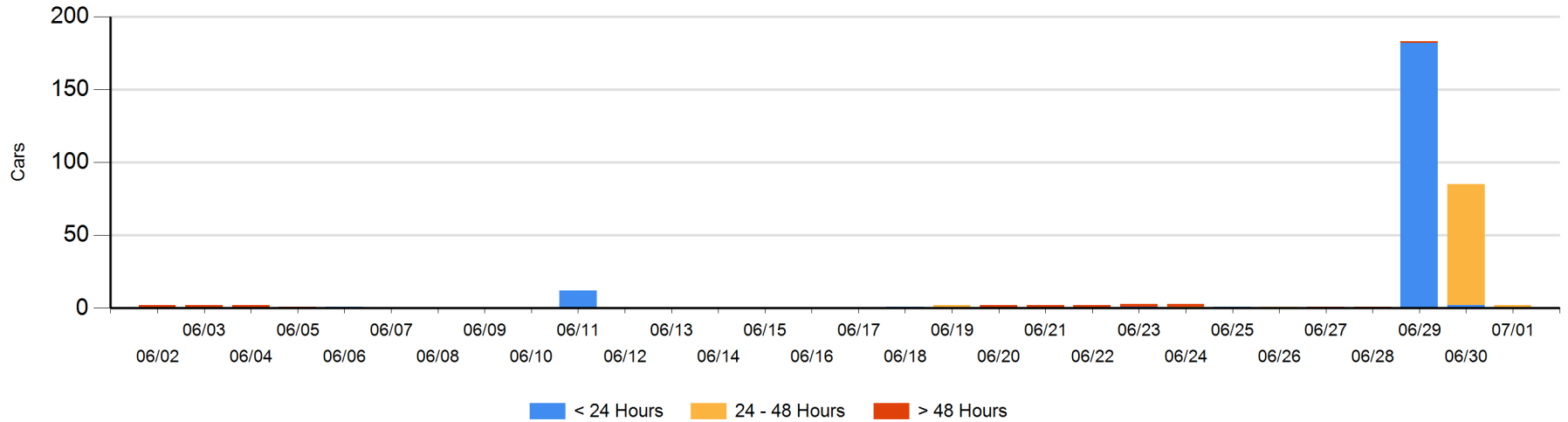
Today

	< 24 Hrs	24 - 48 Hrs	> 48-72 Hrs	> 72 Hrs	Total On Hand
CN		2			2

Change in Last 24 Hours

	< 24 Hrs	24-48 Hrs	48 - 72 Hrs	> 72 Hrs
CN	-2	-81		

Loaded Cars on Hand Prince Rupert Waiting for Placement - Last 30 Days All Railways



Port Terminal Status

Thunder Bay

Daily Activity for 7/1/2019

	Cars Arrived	Cars Received in Interchange	Cars Delivered in Interchange	Cars Placed for Unloading	Loads on Wheels at Destination As of 7/1/2019
CN	270			66	731
CP	214			76	900

Port Unloads

	07/01	06/30	Week To Date	Last Week
CN		2		401
CP	57		57	1,154

Age Profile of Loaded Cars Waiting Placement for Unloading

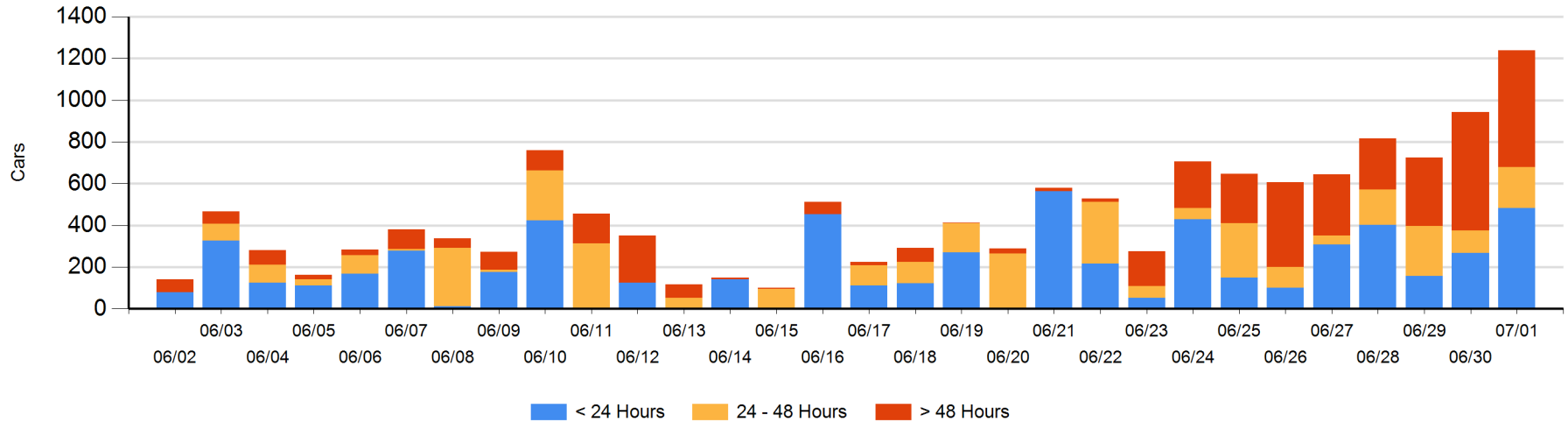
Today

	< 24 Hrs	24 - 48 Hrs	> 48-72 Hrs	> 72 Hrs	Total On Hand
CN	270		74	123	467
CP	214	194		363	771

Change in Last 24 Hours

	< 24 Hrs	24-48 Hrs	48 - 72 Hrs	> 72 Hrs
CN	270	-106	43	-47
CP	-54	194	-209	205

Loaded Cars on Hand Thunder Bay Waiting for Placement - Last 30 Days All Railways



Measurement Definitions

Loads on Wheels	<p>Count of loaded rail cars including all rail cars that have been released loaded at origin and have not been reported by the railway as unloaded at destination.</p> <p>Counts include all rail cars (hopper cars and boxcars) moving within a pipeline.</p>
Loads Not Moving	<p>Loaded rail cars for which the railways have not reported a movement event for 48 hours or more whether the rail car is at origin, enroute or at destination.</p>
Port Unloads	<p>Count of rail cars reported by railways as unloaded at the western port destinations of Vancouver, Prince Rupert and Thunder Bay.</p> <p>Unload counts include all rail cars (hopper cars and boxcars) unloaded by all receivers including major port terminals, transloaders and other receivers.</p>
Cars Arrived	<p>Count of rail cars reported as arrived at the destination railway terminal.</p>
Cars Received in Interchange	<p>Count of rail cars received in interchange by each railway within a destination railway terminal. Interchange activity is tracked for the Vancouver and Thunder Bay pipelines as applicable.</p>
Cars Delivered in Interchange	<p>Count of rail cars delivered in interchange by each railway within a destination railway terminal. Interchange activity is tracked for the Vancouver and Thunder Bay pipelines as applicable.</p>
Cars Placed for Unloading	<p>Count of rail cars reported by the railways as placed loaded at the receiver's facility for unloading.</p>
Loads on Wheels at Destination	<p>Count of rail cars that remain under load within the destination railway terminal including rail cars that have been reported as placed for unloading but not yet reported as unloaded.</p>
Waiting Placement for Unloading	<p>Count of rail cars that have been reported as arrived at the destination railway terminal but not reported as placed for unloading by the railway.</p> <p>For the Ports of Vancouver, Prince Rupert and Thunder Bay the count of rail cars waiting placement for unloading is categorized by age – i.e. the elapsed time from arrival at destination to the current report date.</p>