

SPEED READ

- Loads on wheels decreased marginally overnight, reflecting lower CP traffic offset by a rise in CN volumes. On a net basis, volumes decreased due to reduced volumes in the Thunder Bay, USA/MEX and E. Canada corridors offset by higher volumes in the Vancouver and Prince Rupert corridors.
- Network fluidity improved overnight, led by a decline in idle car counts on CN by 32% (-247) offset by a rise in idle car counts on CP by 8% (+103). The total count of cars for 4+ days on both railways increased 39% (+257) overnight - now at 917 cars, the highest seen in the last 30 days.
- Two days in Week 49 unloads now behind prior week's performance by 450 unloads, reflecting lower unloads at Vancouver and Thunder Bay offset by improved week over week performance at Prince Rupert.

Loads on Wheels

- Loads on wheels decreased marginally by 1% (-86) overnight and have now decreased for the fourth consecutive day, due to lower volumes on CP offset by higher traffic on CN - combined total at 8,679 and 2% below the trailing 30-day average.
- On a net basis, the decline in loads on wheels reflects reduced volumes in the Thunder Bay, USA/MEX and E. Canada corridors offset by higher volumes in the Vancouver and Prince Rupert corridors.
- CN volumes increased 3% (+129) overnight, with higher traffic in the Vancouver, Prince Rupert and E. Canada corridors offset by reduced volumes in the Thunder Bay and USA/MEX corridors. System wide CN loads on wheels currently at 5,048 and 7% above the trailing 30-day average.
- CP volumes fell 6% (-229) overnight, driven by a decline in volumes across all corridors other than USA/MEX. CP system wide loads on wheels currently at 3,501 and 13% below the trailing 30-day average.
- Vancouver currently at 4,851, increased 3% (+150) overnight, now 5% below the trailing 30-day average.
- The Prince Rupert pipeline currently at 1,356, increased significantly by 12% (+141) overnight, and 8% above the trailing 30-day average.
- Thunder Bay volumes decreased significantly by 19% (-360) overnight and have now decreased for the third consecutive day - currently at 1,530 and 1% above the trailing 30-day average, with 47% of traffic moving on CP.

Hopper Car Rationing

- CN and CP rationed no hopper cars in week 47 with none yet reported for week 48.

Loads Not Moving

- **The count of cars not moving for 48+ hours fell 7% (-144) overnight, marking reduced counts on CN offset by higher counts on CP. Idle car counts now at 1,856 and 73% above the trailing 30-day average.**
- CN
 - **The count of idle cars for 48+ hours fell 32% (-247) overnight - now at 529 cars.**
 - The number of cars idle for 4+ days fell 19% (-58) overnight - now at 251 cars.
 - The count of cars not moving for 7+ days fell 25% (-43) overnight - now at 127 cars.
 - Vancouver represents 48% of all idle cars.
 - In total 20% of all idle cars are dwelling at origin locations.
- CP
 - **CP idle car counts for 48+ hours increased 8% (+103) overnight and have now increased for the third consecutive day - now at 1,327 cars, the highest seen in the last 30 days.**
 - The number of cars idle for 4+ days increased significantly by 90% (+315) overnight - now at 666 cars, the highest seen in the last 30 days.

- The number of cars idle for 7+ days decreased 31% (-43) overnight - now at 94 cars.
- Vancouver accounts for 57% of all idle cars.
- In total 13% of all idle cars are dwelling at origin locations.

Port Performance

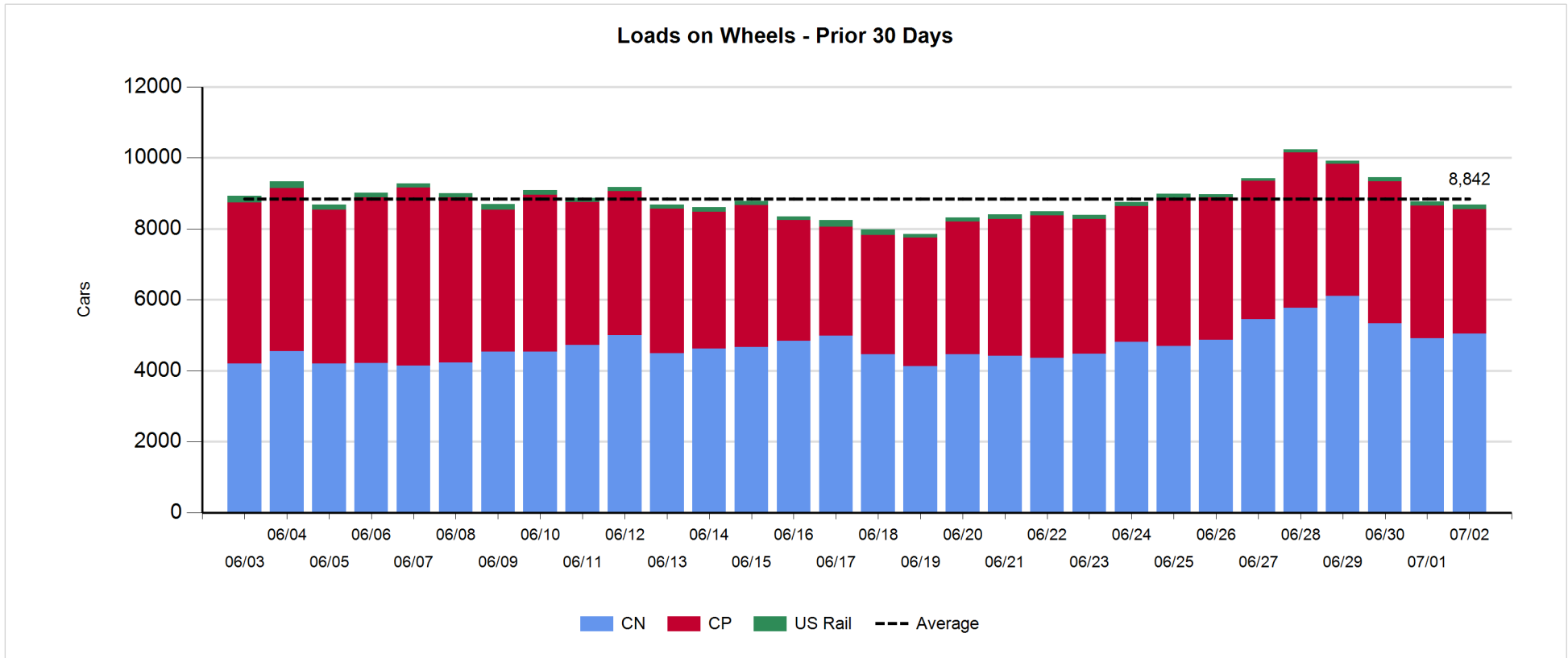
- CN and CP reported a total of 1,119 cars unloaded at the three major ports, now in line with the trailing 30-day average. Two days in Week 49 unloads now behind last week's pace by 450 unloads, reflecting lower unloads at Vancouver and Thunder Bay offset by higher unloads at Prince Rupert.
- Vancouver
 - 576 unloads reported by CN and CP at the Port of Vancouver; CN - 272 and CP - 304. Two days in Week 49 unloads are tracking behind last week's performance by 350 unloads.
 - There are 1,050 cars on site at Vancouver with more than 350 cars arriving at the port in the last 24 hours.
 - CN and CP have more than 1,200 cars in British Columbia en route to Vancouver, with 850 cars at Kamloops and west, and 61% of traffic moving on CN.
- Prince Rupert
 - Prince Rupert reported 173 unloads, now ahead of last week's unloads after two days by 50 unloads.
 - Loads on wheels now above 1,000 cars - currently at 1,356 cars.
 - There are more than 800 cars west of Jasper en route to Prince Rupert.
 - There are 50 cars on site at Prince Rupert with nearly 50 cars arriving at the port in the last 24 hours.
- Thunder Bay
 - 370 unloads were reported at Thunder Bay yesterday. Two days in Week 49 unloads are tracking behind last week's pace by 150 unloads.
 - There are 1,450 cars on site at Thunder Bay with around 200 cars arriving at the port in the prior 24 hours.
 - There are 50 cars en route to Thunder Bay from Winnipeg and east.

Daily Loads on Wheels - 7/2/2019

	E Canada	Prince Rupert	Thunder Bay	USA/MEX	Vancouver	Total
CN	442	1,356	812	130	2,308	5,048
CP	110		718	209	2,464	3,501
Short Line	3				79	82
US Rail				48		48
	555	1,356	1,530	387	4,851	8,679

Change in Loads on Wheels - Prior 24 Hours

	E Canada	Prince Rupert	Thunder Bay	USA/MEX	Vancouver	Total
CN	6	141	-141	-18	141	129
CP	-1		-219	7	-16	-229
Short Line	-8				25	17
US Rail				-3		-3
	-3	141	-360	-14	150	-86

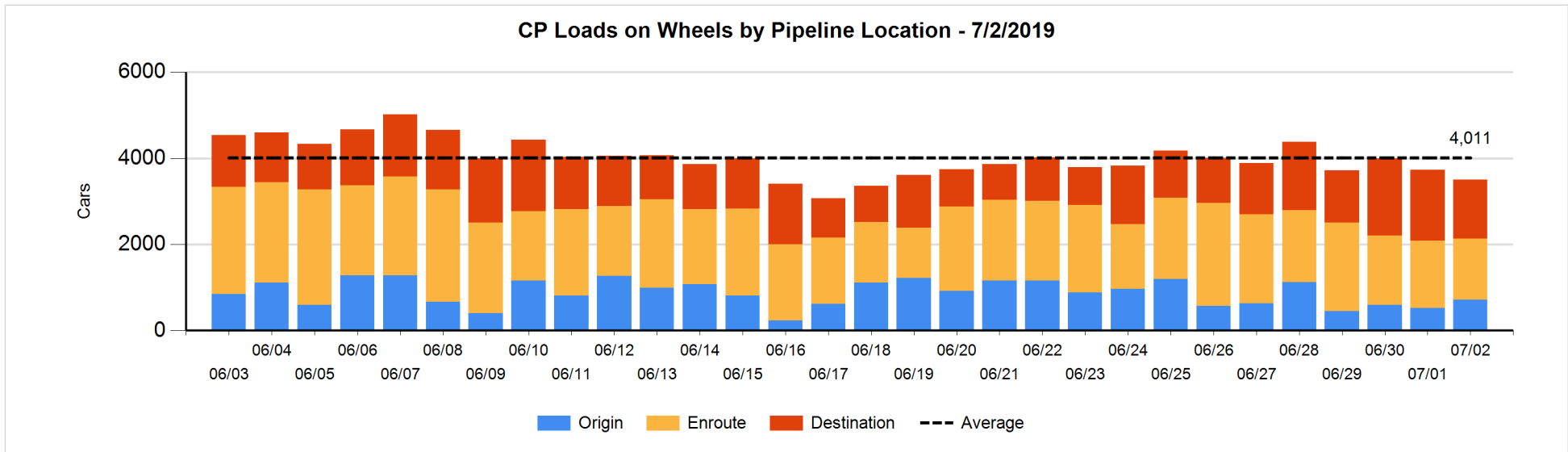
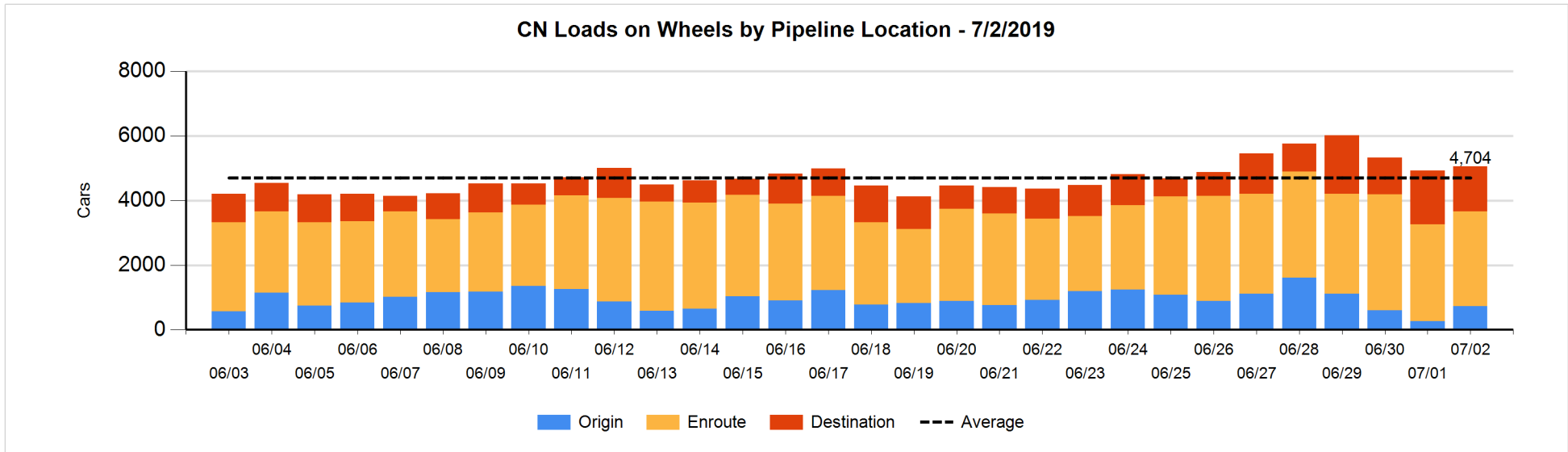


Daily Loads on Wheels By Pipeline Location - 7/2/2019

	E Canada	Prince Rupert	Thunder Bay	USA/MEX	Vancouver	Total
CN						
Origin	25	339			365	729
Enroute	272	970	57	114	1,521	2,934
Destination	145	47	755	16	422	1,385
	442	1,356	812	130	2,308	5,048
CP						
Origin	10		10	7	683	710
Enroute	36		20	130	1,240	1,426
Destination	64		688	72	541	1,365
	110		718	209	2,464	3,501
US Rail / Short Line						
Origin						
Enroute				38		38
Destination	3			10	79	92
	3			48	79	130

Change in Daily Loads on Wheels By Pipeline Location - Prior 24 Hours

	E Canada	Prince Rupert	Thunder Bay	USA/MEX	Vancouver	Total
CN						
Origin	25	307		-8	138	462
Enroute	82	-26	-165	-10	59	-60
Destination	-101	-140	24	0	-56	-273
	6	141	-141	-18	141	129
CP						
Origin	4		-8	6	183	185
Enroute	-64		1	-56	-18	-137
Destination	59		-212	57	-181	-277
	-1		-219	7	-16	-229
US Rail / Short Line						
Origin						
Enroute				1		1
Destination	-8			-4	25	13
	-8			-3	25	14

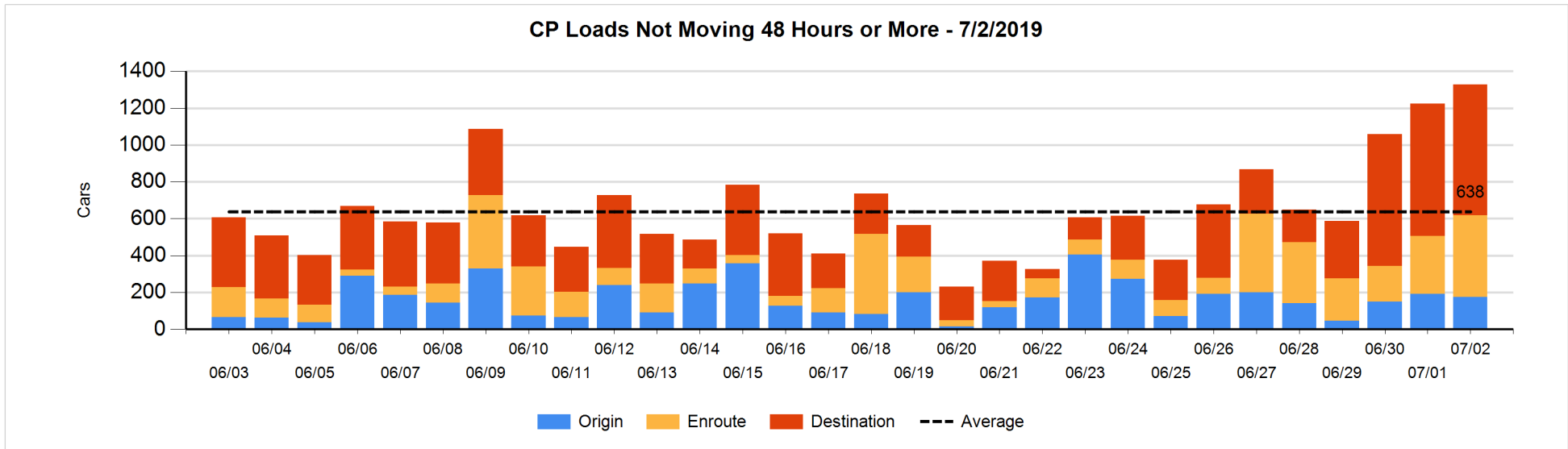
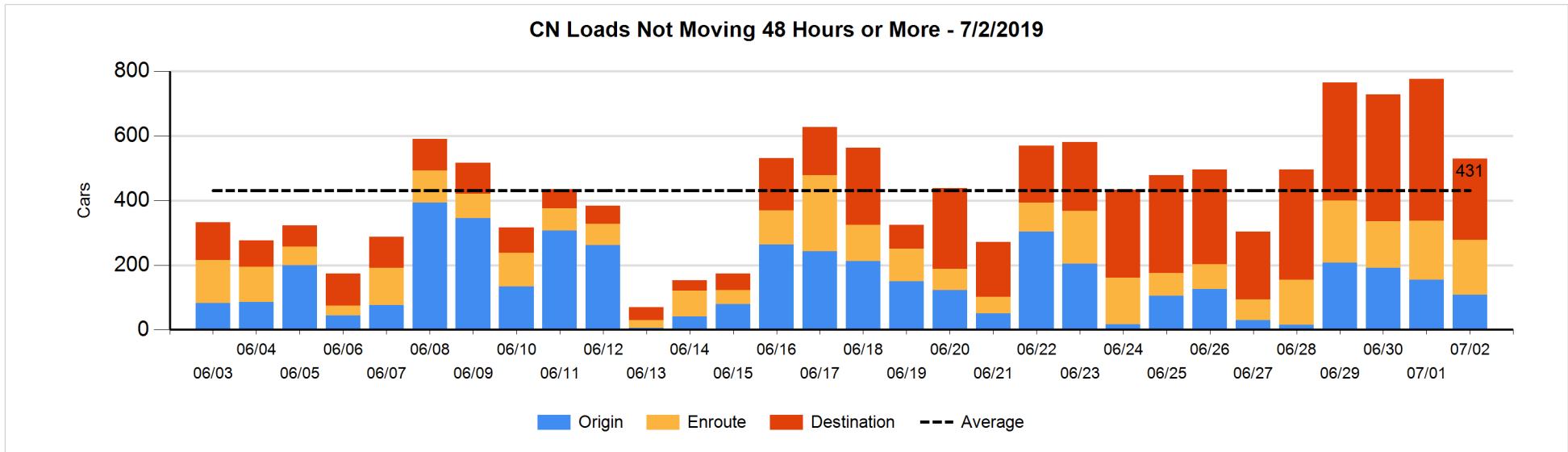


Loads Not Moving 48 Hours or More - 7/2/2019

	E Canada	Prince Rupert	Thunder Bay	USA/MEX	Vancouver	Total
CN						
Origin		32			76	108
Enroute	17	5			148	170
Destination	40	18	161	3	29	251
	57	55	161	3	253	529
CP						
Origin	6			1	168	175
Enroute	23		2	30	389	444
Destination	5		502		201	708
	34		504	31	758	1327
US Rail / Short Line						
Origin						
Enroute				14		14
Destination	3			4	44	51
	3			18	44	65

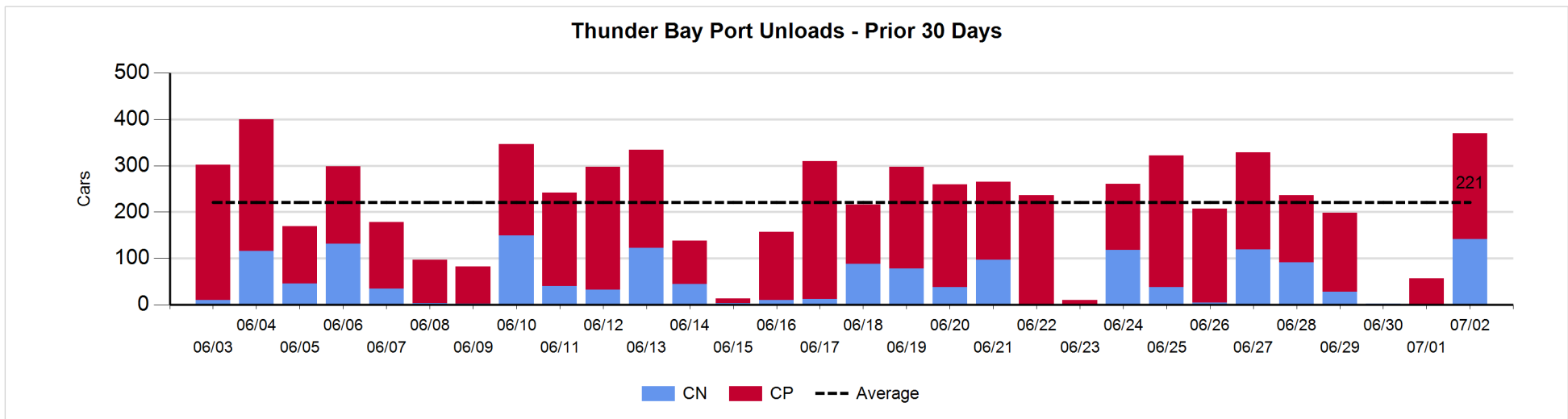
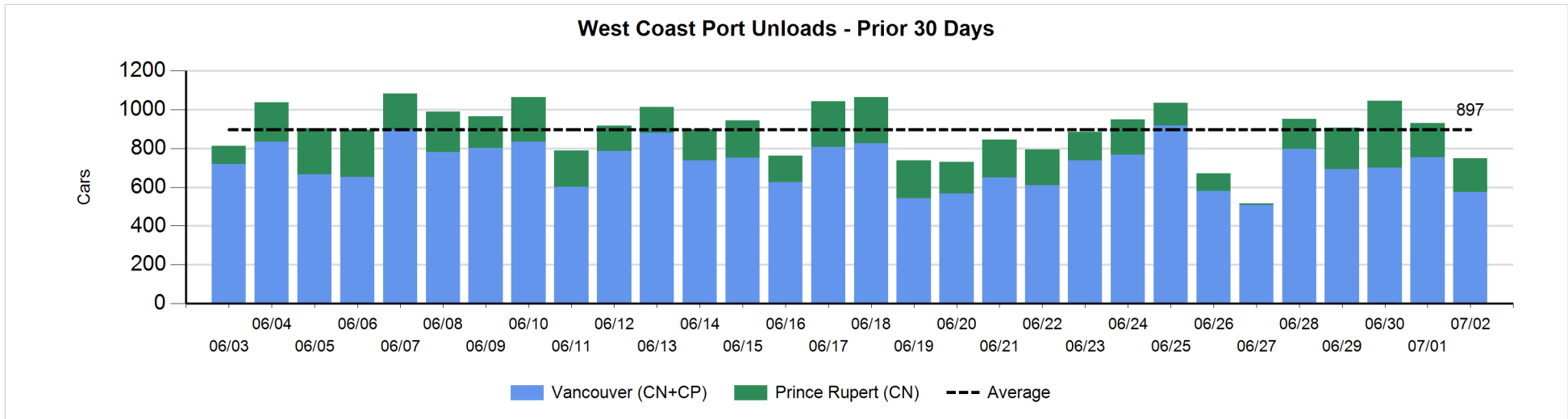
Change in Loads Not Moving 48 Hours or More - 7/2/2019

	E Canada	Prince Rupert	Thunder Bay	USA/MEX	Vancouver	Total
CN						
Origin		0			-47	-47
Enroute	9	0		-1	-21	-13
Destination	-14	18	-184	-2	-5	-187
	-5	18	-184	-3	-73	-247
CP						
Origin	1		-18	0	-1	-18
Enroute	-10		1	5	134	130
Destination	0		86		-95	-9
	-9		69	5	38	103
US Rail / Short Line						
Origin						
Enroute				-1		-1
Destination	-8			-3	22	11
	-8			-4	22	10



Port Unloads - 7/2/2019

	Prince Rupert	Vancouver	West Coast Total	Thunder Bay	Total
CN	173	272	445	141	586
CP		304	304	229	533
	173	576	749	370	1,119



Port Terminal Status

Vancouver

Daily Activity for 7/2/2019

	Cars Arrived	Cars Received in Interchange	Cars Delivered in Interchange	Cars Placed for Unloading	Loads on Wheels at Destination As of 7/2/2019
CN	91	105	103	216	422
CP	282	98	120	435	541
SRY	2	20		9	79

Port Unloads

	07/02	07/01	Week To Date	Last Week
CN	272	225	497	2,014
CP	304	528	832	2,944
SRY	10	8	18	49

Age Profile of Loaded Cars Waiting Placement for Unloading

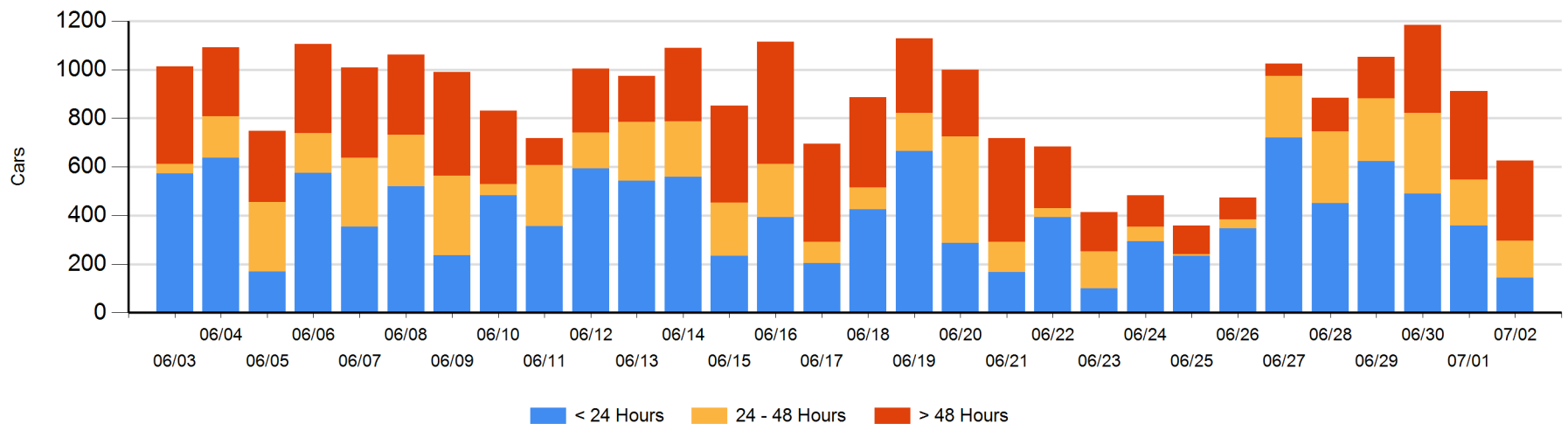
Today

	< 24 Hrs	24 - 48 Hrs	> 48-72 Hrs	> 72 Hrs	Total On Hand
CN	88	143	30	109	370
CP	54	11	49	142	256
SRY	1				1

Change in Last 24 Hours

	< 24 Hrs	24-48 Hrs	48 - 72 Hrs	> 72 Hrs
CN	-159	106	-99	52
CP	-57	-142	-10	23
SRY	1			

Loaded Cars on Hand Vancouver Waiting for Placement - Last 30 Days All Railways



Port Terminal Status

Prince Rupert

Daily Activity for 7/2/2019

	Cars Arrived	Cars Received in Interchange	Cars Delivered in Interchange	Cars Placed for Unloading	Loads on Wheels at Destination As of 7/2/2019
CN	35			35	47

Port Unloads

	07/02	07/01	Week To Date	Last Week
CN	173	177	350	1,115

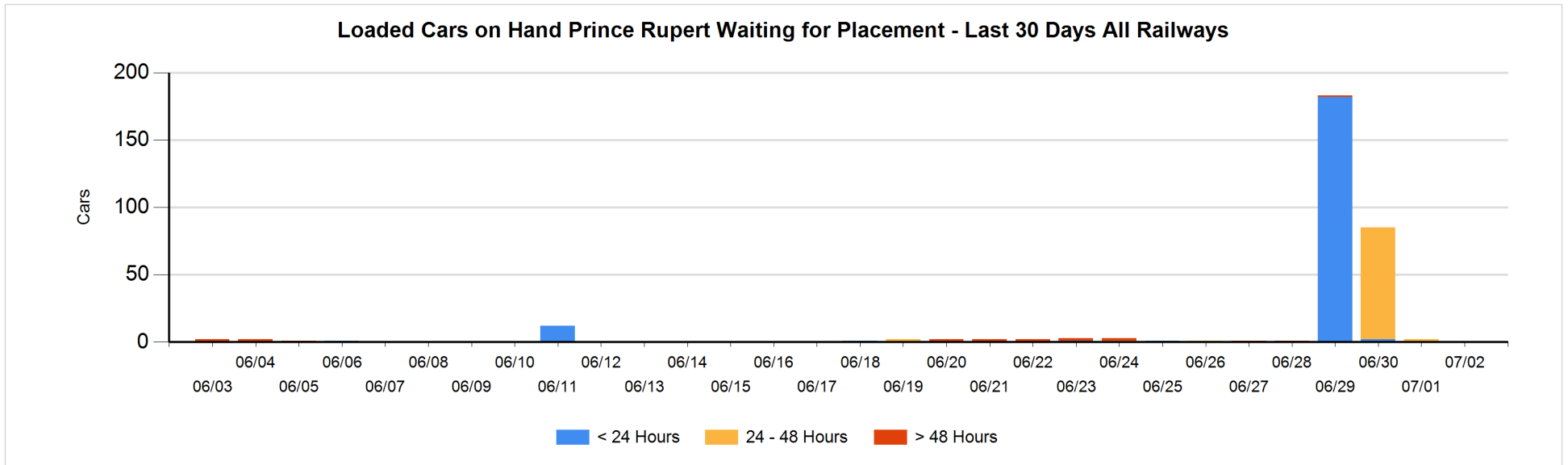
Age Profile of Loaded Cars Waiting Placement for Unloading

Today

	< 24 Hrs	24 - 48 Hrs	> 48-72 Hrs	> 72 Hrs	Total On Hand
CN					0

Change in Last 24 Hours

	< 24 Hrs	24-48 Hrs	48 - 72 Hrs	> 72 Hrs
CN		-2		



Port Terminal Status

Thunder Bay

Daily Activity for 7/2/2019

	Cars Arrived	Cars Received in Interchange	Cars Delivered in Interchange	Cars Placed for Unloading	Loads on Wheels at Destination As of 7/2/2019
CN	165			179	755
CP	17			141	688

Port Unloads

	07/02	07/01	Week To Date	Last Week
CN	141		141	401
CP	229	57	286	1,154

Age Profile of Loaded Cars Waiting Placement for Unloading

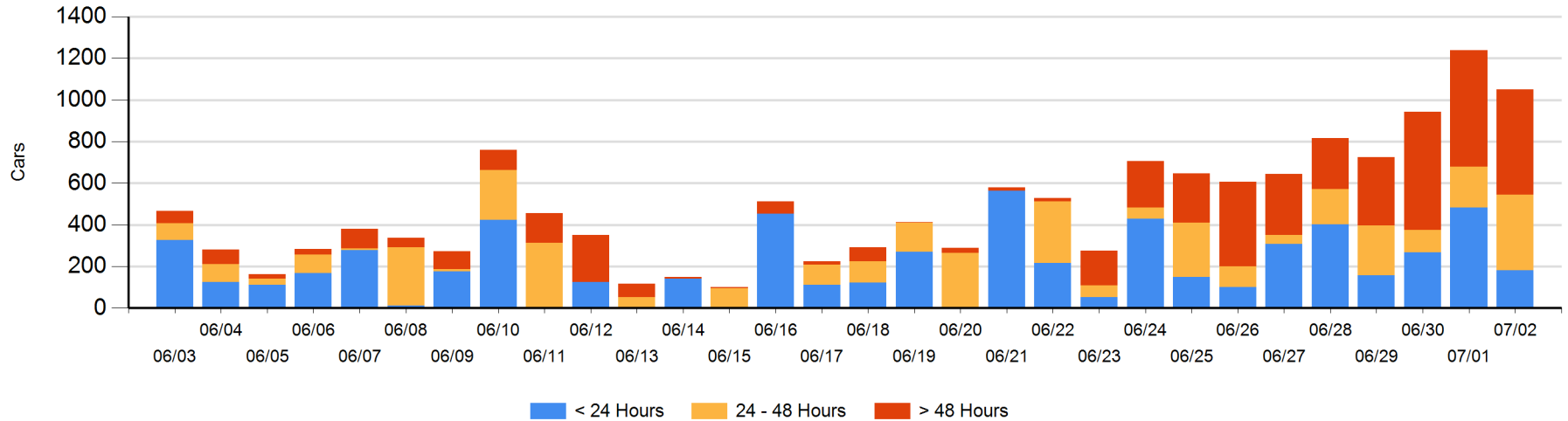
Today

	< 24 Hrs	24 - 48 Hrs	> 48-72 Hrs	> 72 Hrs	Total On Hand
CN	165	229		64	458
CP	17	134	163	278	592

Change in Last 24 Hours

	< 24 Hrs	24-48 Hrs	48 - 72 Hrs	> 72 Hrs
CN	-105	229	-74	-59
CP	-197	-60	163	-85

Loaded Cars on Hand Thunder Bay Waiting for Placement - Last 30 Days All Railways



Measurement Definitions

Loads on Wheels	Count of loaded rail cars including all rail cars that have been released loaded at origin and have not been reported by the railway as unloaded at destination. Counts include all rail cars (hopper cars and boxcars) moving within a pipeline.
Loads Not Moving	Loaded rail cars for which the railways have not reported a movement event for 48 hours or more whether the rail car is at origin, enroute or at destination.
Port Unloads	Count of rail cars reported by railways as unloaded at the western port destinations of Vancouver, Prince Rupert and Thunder Bay. Unload counts include all rail cars (hopper cars and boxcars) unloaded by all receivers including major port terminals, transloaders and other receivers.
Cars Arrived	Count of rail cars reported as arrived at the destination railway terminal.
Cars Received in Interchange	Count of rail cars received in interchange by each railway within a destination railway terminal. Interchange activity is tracked for the Vancouver and Thunder Bay pipelines as applicable.
Cars Delivered in Interchange	Count of rail cars delivered in interchange by each railway within a destination railway terminal. Interchange activity is tracked for the Vancouver and Thunder Bay pipelines as applicable.
Cars Placed for Unloading	Count of rail cars reported by the railways as placed loaded at the receiver's facility for unloading.
Loads on Wheels at Destination	Count of rail cars that remain under load within the destination railway terminal including rail cars that have been reported as placed for unloading but not yet reported as unloaded.
Waiting Placement for Unloading	Count of rail cars that have been reported as arrived at the destination railway terminal but not reported as placed for unloading by the railway. For the Ports of Vancouver, Prince Rupert and Thunder Bay the count of rail cars waiting placement for unloading is categorized by age – i.e. the elapsed time from arrival at destination to the current report date.