

**SPEED READ**

- Loads on wheels rose slightly overnight, marking higher CP volumes offset by a decline in CN volumes. On a net basis, volumes rose due to higher traffic in the Vancouver and Prince Rupert corridors offset by lower traffic in the Thunder Bay, E. Canada and USA/MEX corridors.
- Network fluidity improved overnight, led by a decline in idle car counts on both CN and CP by 18% (-79) and 27% (-251), respectively. The total count of cars for 4+ days on both railways decreased 29% (-189) overnight - now at 467 cars.
- Four days in Week 49 unloads now ahead of prior week's performance by 600 unloads, marking improved week over week performance across all three major ports - Vancouver, Thunder Bay and Prince Rupert.

=====

**Loads on Wheels**

- Loads on wheels rose slightly by 1% (+52) overnight, due to higher volumes on CP offset by reduced volumes on CN - combined total at 7,501 and 14% below the trailing 30-day average.
- On a net basis, the rise in loads on wheels reflects higher traffic in the Vancouver and Prince Rupert corridors offset by lower traffic in the Thunder Bay, E. Canada and USA/MEX corridors.
- CN volumes declined 4% (-162) overnight, with lower volumes in the Thunder Bay, Vancouver and E. Canada corridors offset by higher volumes in the Prince Rupert and USA/MEX corridors. System wide CN loads on wheels now at 4,100, the lowest seen in the last 30 days, and 13% below the trailing 30-day average.
- CP volumes rose 8% (+234) overnight, driven by a rise in traffic in the Vancouver and E. Canada corridors offset by a decline in volumes in the Thunder Bay and USA/MEX corridors. CP system wide loads on wheels now at 3,249 and 17% below the trailing 30-day average.
- Vancouver now at 4,472, rose 5% (+223) overnight, now 11% below the trailing 30-day average.
- The Prince Rupert pipeline now at 1,256, rose significantly by 13% (+143) overnight, and 2% above the trailing 30-day average.
- Thunder Bay volumes decreased for the fifth consecutive day, down 21% (-260) overnight - now at 987 and 34% below the trailing 30-day average, with 47% of traffic moving on CP.

**Hopper Car Rationing**

- CN rationed 5 hopper cars in week 48.

**Loads Not Moving**

- **The count of cars not moving for 48+ hours declined for the third consecutive day, down 24% (-330) overnight, marking lower counts on both CN and CP. Idle car counts presently at 1,050 and 4% below the trailing 30-day average.**
- CN
  - **The count of idle cars for 48+ hours declined for the third consecutive day, down 18% (-79) overnight - now at 366 cars.**
  - The number of cars idle for 4+ days decreased 10% (-18) overnight and have now decreased for the fourth consecutive day - presently at 168 cars.
  - The count of cars not moving for 7+ days rose 9% (+11) overnight - now at 136 cars.
  - Vancouver represents 36% of all idle cars.
  - In total 2% of all idle cars are dwelling at origin locations.
- CP
  - **CP idle car counts for 48+ hours declined 27% (-251) overnight - now at 684 cars.**

- The number of cars idle for 4+ days decreased 36% (-171) overnight - presently at 299 cars.
- The number of cars idle for 7+ days increased significantly by 250% (+50) overnight - currently at 70 cars.
- Vancouver accounts for 40% of all idle cars.
- In total 26% of all idle cars are dwelling at origin locations.

### **Port Performance**

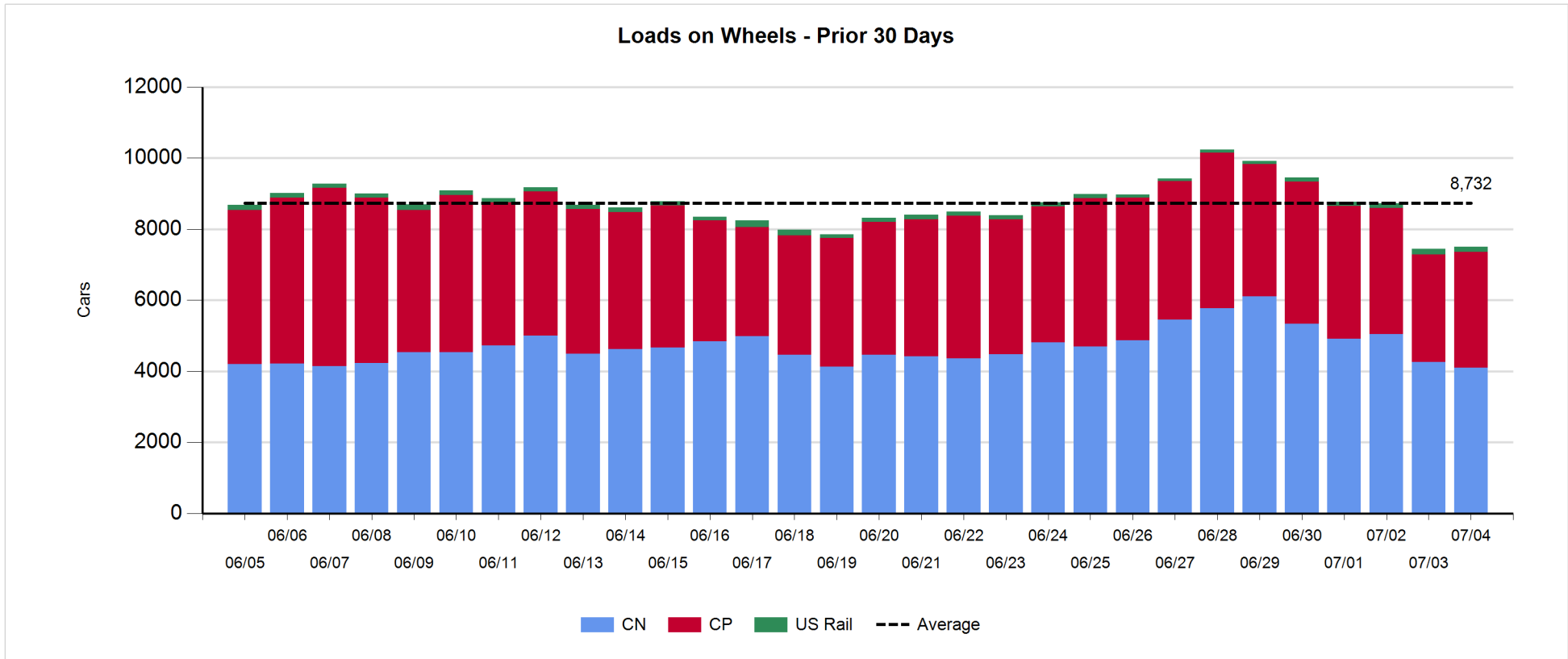
- CN and CP reported a total of 1,310 cars unloaded at the three major ports, now 16% above the trailing 30-day average. Four days in Week 49 unloads now ahead of last week's pace by 600 unloads, marking higher unloads across all three major ports - Vancouver, Thunder Bay and Prince Rupert.
- Vancouver
  - 735 unloads reported by CN and CP at the Port of Vancouver; CN - 353 and CP - 382. Four days in Week 49 unloads are tracking ahead of last week's performance by about 200 unloads.
  - There are 900 cars on site at Vancouver with about 550 cars arriving at the port in the last 24 hours.
  - CN and CP have 650 cars in British Columbia en route to Vancouver, with 250 cars at Kamloops and west, and 57% of traffic moving on CP.
- Prince Rupert
  - Prince Rupert reported 207 unloads, now ahead of last week's unloads after four days by 400 unloads.
  - Loads on wheels now above 1,000 cars - now at 1,256 cars.
  - There are 300 cars west of Jasper en route to Prince Rupert.
  - There are more than 250 cars on site at Prince Rupert with 200 cars arriving at the port in the last 24 hours.
- Thunder Bay
  - 368 unloads were reported at Thunder Bay yesterday. Four days in Week 49 unloads are tracking ahead of last week's pace by 8 unloads.
  - There are more than 750 cars on site at Thunder Bay with 4 cars arriving at the port in the prior 24 hours.
  - There are more than 50 cars en route to Thunder Bay from Winnipeg and east.

**Daily Loads on Wheels - 7/4/2019**

	E Canada	Prince Rupert	Thunder Bay	USA/MEX	Vancouver	Total
CN	387	1,256	527	68	1,862	4,100
CP	78		460	156	2,555	3,249
Short Line	3				55	58
US Rail				94		94
	468	1,256	987	318	4,472	7,501

**Change in Loads on Wheels - Prior 24 Hours**

	E Canada	Prince Rupert	Thunder Bay	USA/MEX	Vancouver	Total
CN	-61		143			-162
CP	29		-111			234
Short Line	0					-23
US Rail				3		3
	-32	143	-260	-22	223	52

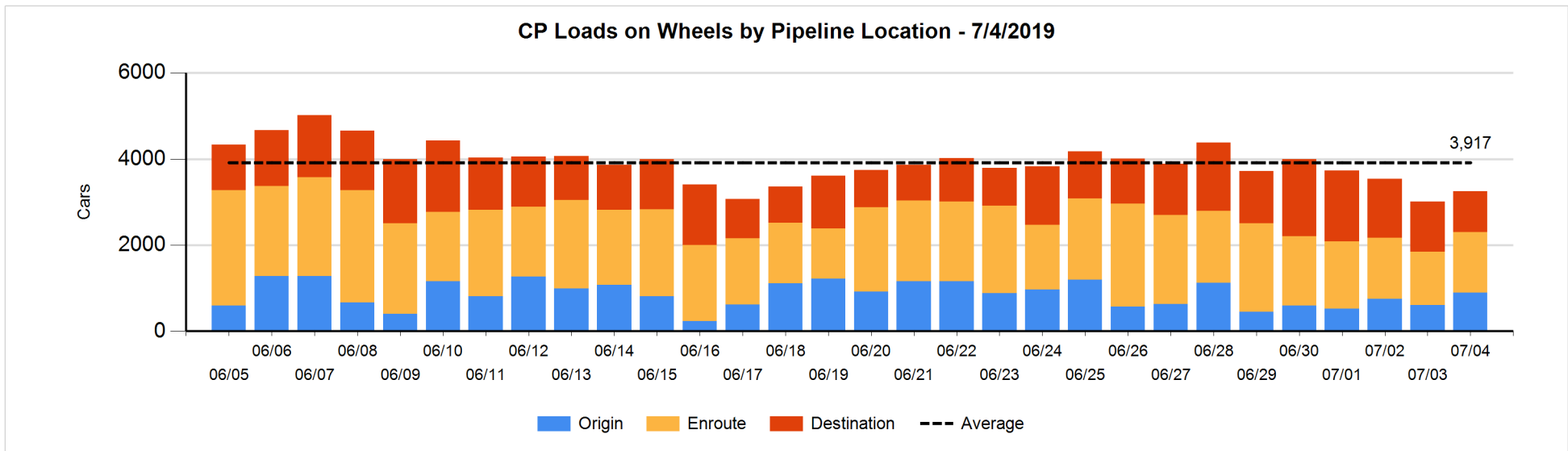
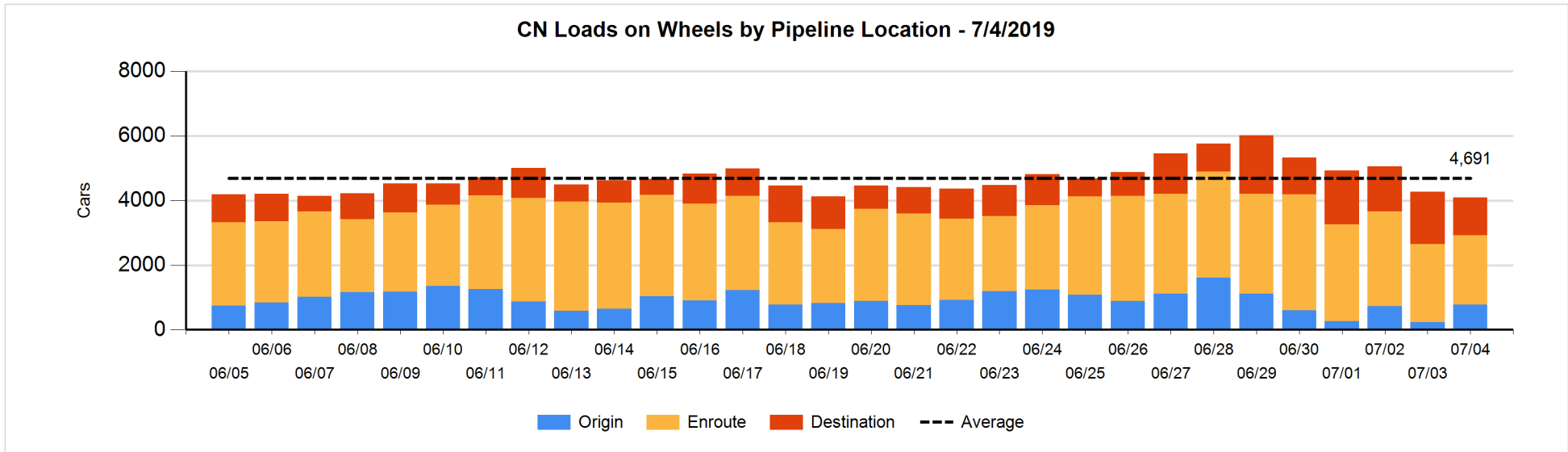


**Daily Loads on Wheels By Pipeline Location - 7/4/2019**

	E Canada	Prince Rupert	Thunder Bay	USA/MEX	Vancouver	Total
CN						
Origin		456		11	305	772
Enroute	275	528	78	47	1,231	2,159
Destination	112	272	449	10	325	1,168
	387	1,256	527	68	1,861	4,099
CP						
Origin	52		118	4	722	896
Enroute	21		19	48	1,317	1,405
Destination	5		323	104	516	948
	78		460	156	2,555	3,249
US Rail / Short Line						
Origin						
Enroute				78		78
Destination	3			16	55	74
	3			94	55	152

**Change in Daily Loads on Wheels By Pipeline Location - Prior 24 Hours**

	E Canada	Prince Rupert	Thunder Bay	USA/MEX	Vancouver	Total
CN						
Origin		340		11	188	539
Enroute	-27	-185	-3	0	-48	-263
Destination	-34	-12	-146	-1	-246	-439
	-61	143	-149	10	-106	-163
CP						
Origin	47		108	1	134	290
Enroute	-18		-1	0	185	166
Destination	0		-218	-36	32	-222
	29		-111	-35	351	234
US Rail / Short Line						
Origin						
Enroute				2		2
Destination	0			1	-23	-22
	0			3	-23	-20

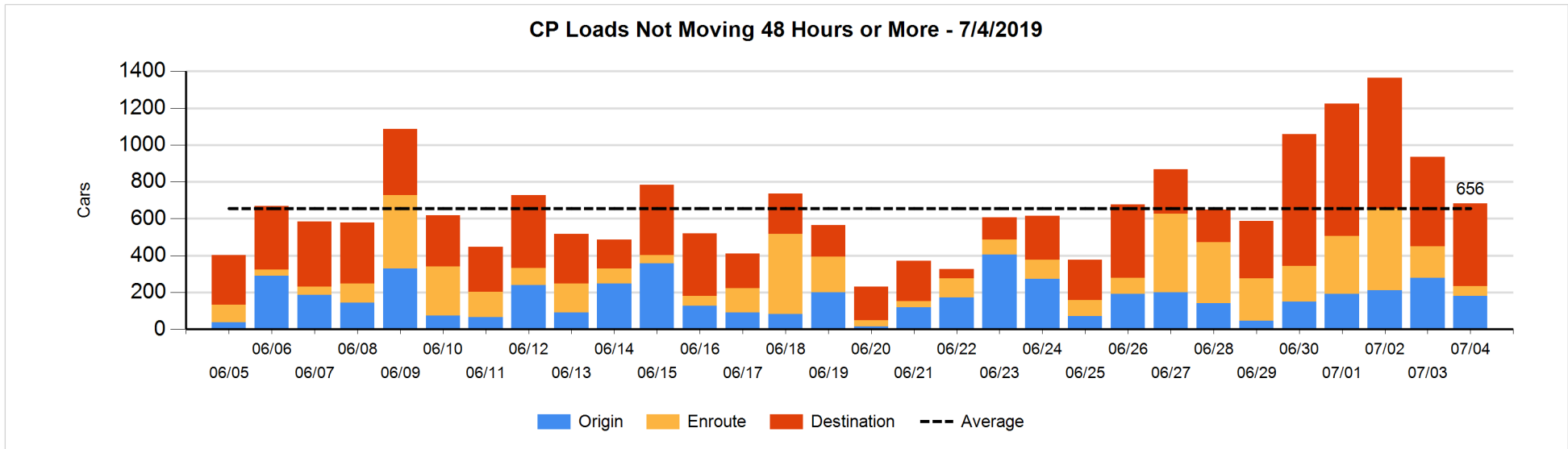
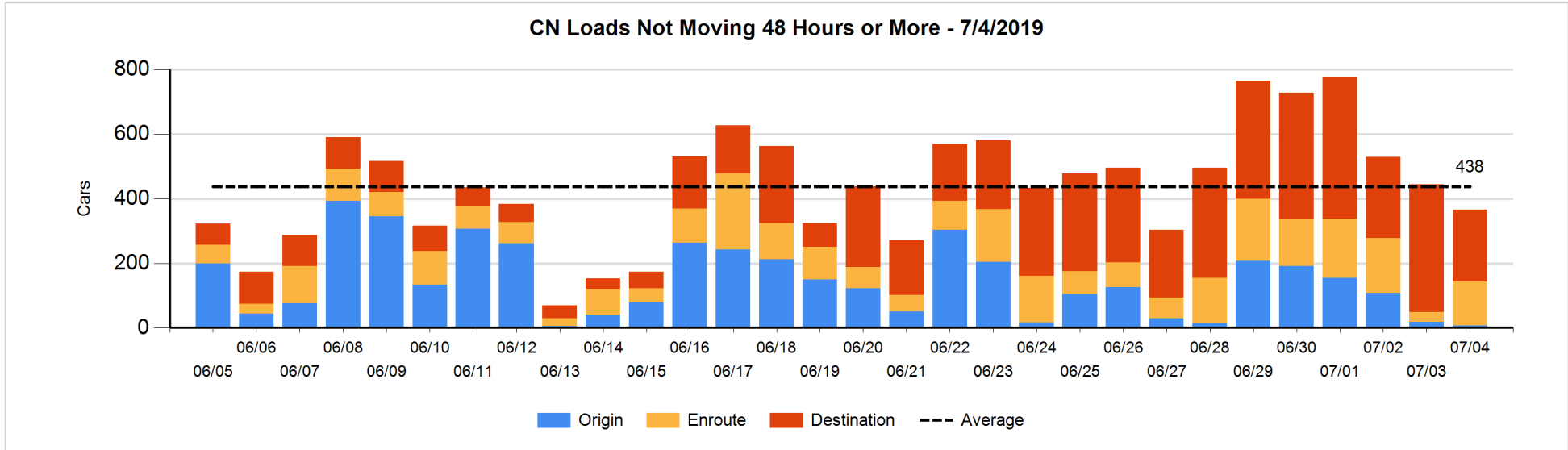


**Loads Not Moving 48 Hours or More - 7/4/2019**

	E Canada	Prince Rupert	Thunder Bay	USA/MEX	Vancouver	Total
<b>CN</b>						
Origin		1			6	7
Enroute	2	23			112	137
Destination	25	18	158	6	15	222
	27	42	158	6	133	366
<b>CP</b>						
Origin	5		10	2	163	180
Enroute	12		1	32	10	55
Destination	4		302	40	103	449
	21		313	74	276	684
<b>US Rail / Short Line</b>						
Origin						
Enroute				20		20
Destination	3			8	24	35
	3			28	24	55

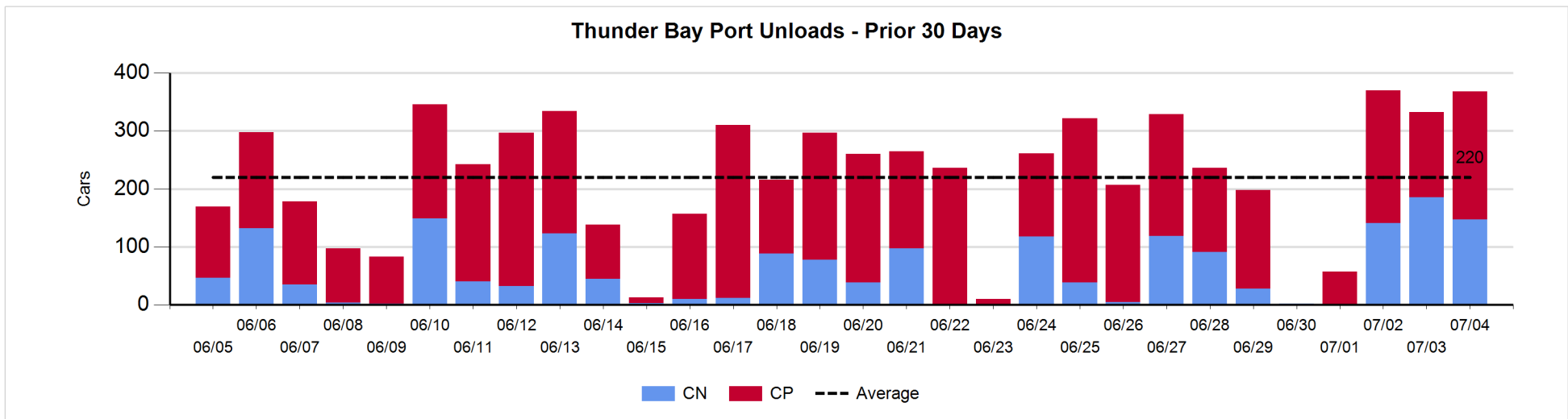
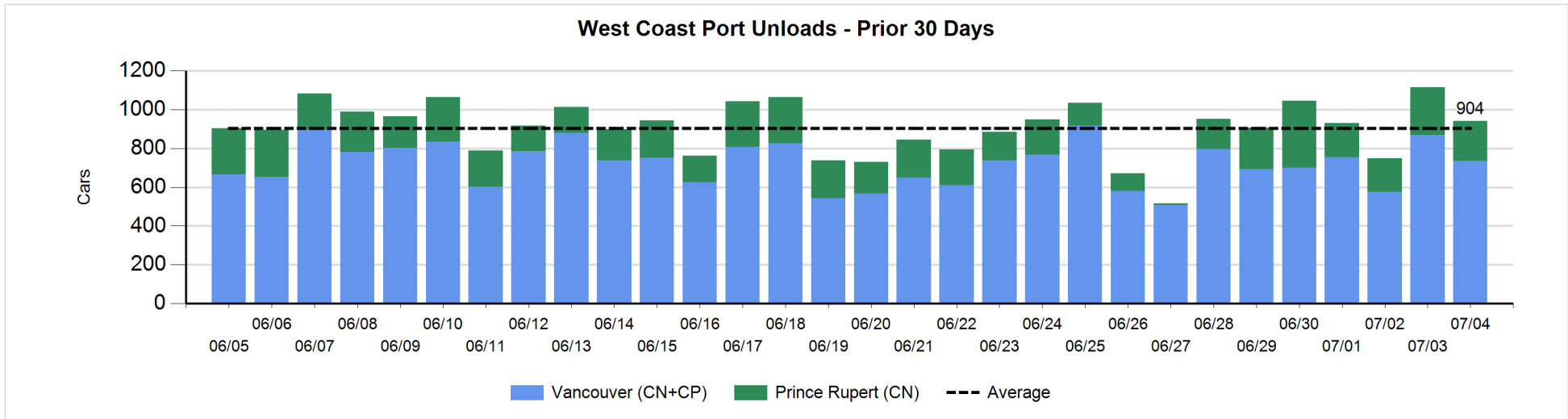
**Change in Loads Not Moving 48 Hours or More - 7/4/2019**

	E Canada	Prince Rupert	Thunder Bay	USA/MEX	Vancouver	Total
<b>CN</b>						
Origin		-11			0	-11
Enroute	-8	18	-1		97	106
Destination	-48	0	-121	3	-8	-174
	-56	7	-122	3	89	-79
<b>CP</b>						
Origin	0		10	2	-112	-100
Enroute	-16		-1	0	-97	-114
Destination	3		-77	25	12	-37
	-13		-68	27	-197	-251
<b>US Rail / Short Line</b>						
Origin						
Enroute				4		4
Destination	0			3	22	25
	0			7	22	29



**Port Unloads - 7/4/2019**

	Prince Rupert	Vancouver	West Coast Total	Thunder Bay	Total
CN	207	353	560	147	707
CP		382	382	221	603
	207	735	942	368	1,310





**Port Terminal Status**

**Vancouver**

Daily Activity for 7/4/2019

	Cars Arrived	Cars Received in Interchange	Cars Delivered in Interchange	Cars Placed for Unloading	Loads on Wheels at Destination As of 7/4/2019
CN	212	25	89	338	325
CP	319	89	25	232	516
SRY				21	55

**Port Unloads**

	07/04	07/03	Week To Date	Last Week
CN	353	350	1,200	2,014
CP	382	519	1,733	2,944
SRY	32	12	62	49

**Age Profile of Loaded Cars Waiting Placement for Unloading**

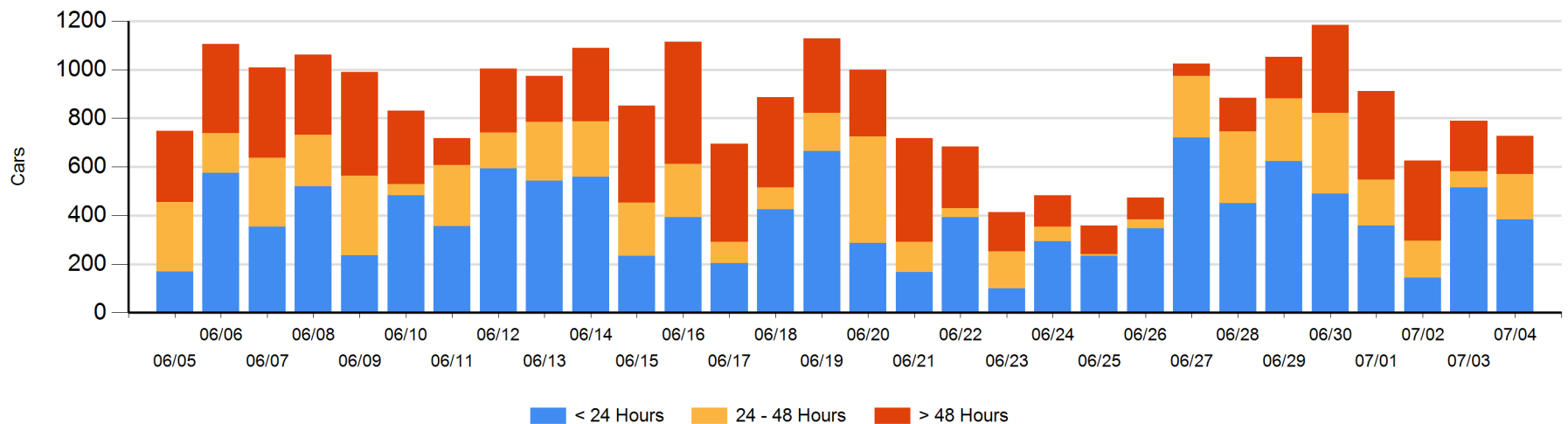
**Today**

	< 24 Hrs	24 - 48 Hrs	> 48-72 Hrs	> 72 Hrs	Total On Hand
CN	110	132	14	47	303
CP	274	54	1	96	425
SRY					0

**Change in Last 24 Hours**

	< 24 Hrs	24-48 Hrs	48 - 72 Hrs	> 72 Hrs
CN	-130	74	-25	-4
CP	-1	44	-10	-9
SRY				

**Loaded Cars on Hand Vancouver Waiting for Placement - Last 30 Days All Railways**



**Port Terminal Status**

**Prince Rupert**

**Daily Activity for 7/4/2019**

	Cars Arrived	Cars Received in Interchange	Cars Delivered in Interchange	Cars Placed for Unloading	Loads on Wheels at Destination As of 7/4/2019
CN	195			290	272

**Port Unloads**

	07/04	07/03	Week To Date	Last Week
CN	207	245	802	1,115

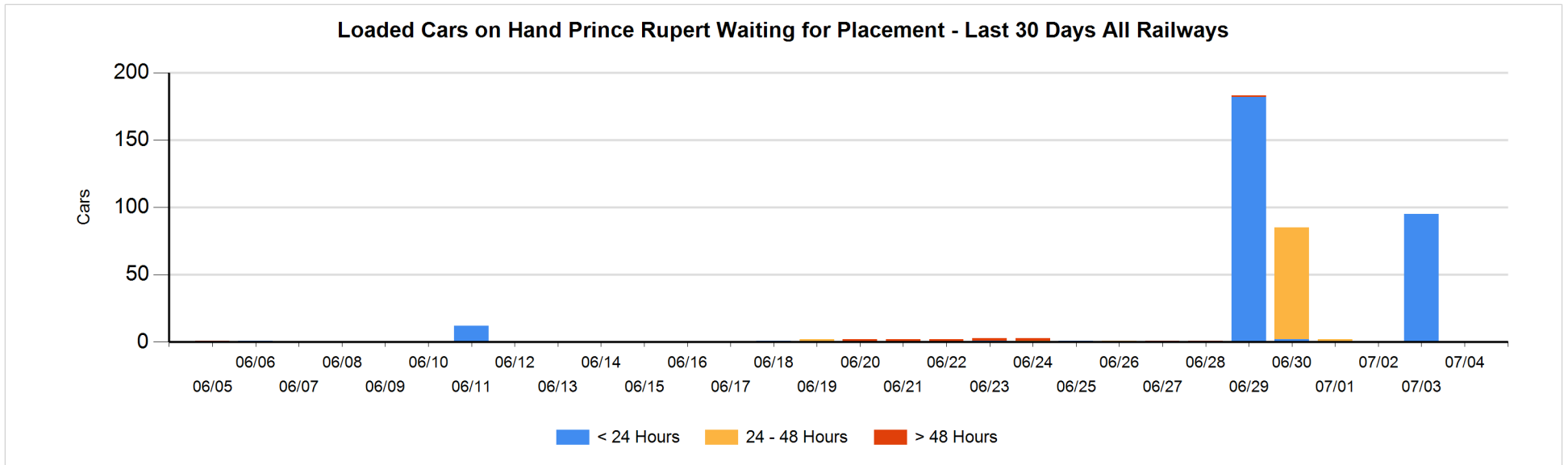
**Age Profile of Loaded Cars Waiting Placement for Unloading**

**Today**

	< 24 Hrs	24 - 48 Hrs	> 48-72 Hrs	> 72 Hrs	Total On Hand
CN					0

**Change in Last 24 Hours**

	< 24 Hrs	24-48 Hrs	48 - 72 Hrs	> 72 Hrs
CN	-95			



**Port Terminal Status**

**Thunder Bay**

Daily Activity for 7/4/2019

	Cars Arrived	Cars Received in Interchange	Cars Delivered in Interchange	Cars Placed for Unloading	Loads on Wheels at Destination As of 7/4/2019
CN	3			104	449
CP	1			199	323

**Port Unloads**

	07/04	07/03	Week To Date	Last Week
CN	147	185	473	401
CP	221	147	654	1,154

**Age Profile of Loaded Cars Waiting Placement for Unloading**

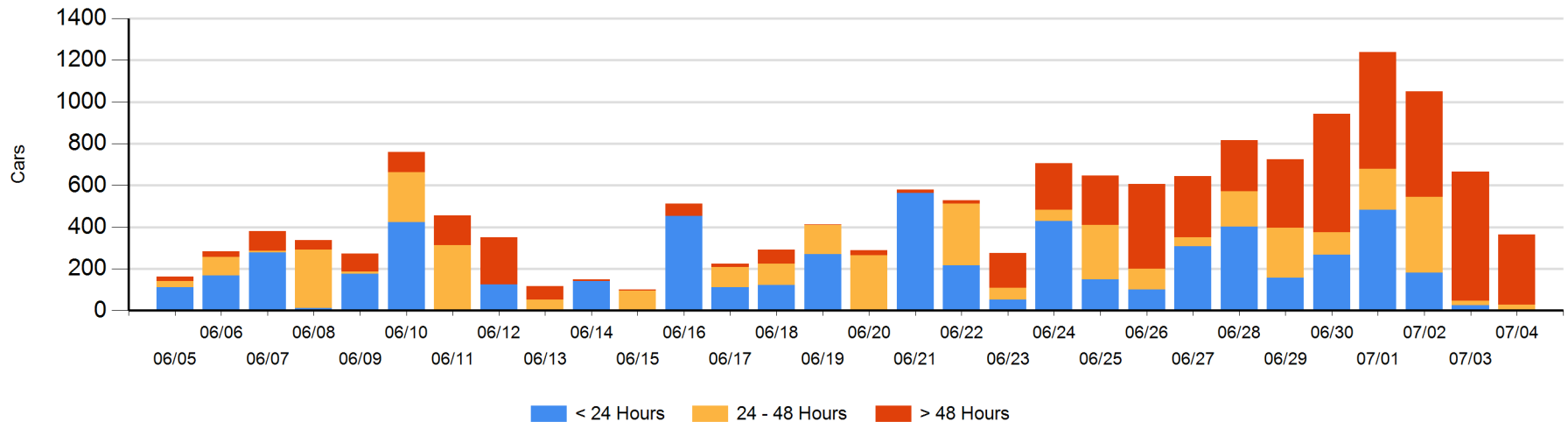
**Today**

	< 24 Hrs	24 - 48 Hrs	> 48-72 Hrs	> 72 Hrs	Total On Hand
CN	3	25	4	36	68
CP	1		17	277	295

**Change in Last 24 Hours**

	< 24 Hrs	24-48 Hrs	48 - 72 Hrs	> 72 Hrs
CN	-22	21	-125	25
CP	1	-17	-97	-88

**Loaded Cars on Hand Thunder Bay Waiting for Placement - Last 30 Days All Railways**



## Measurement Definitions

Loads on Wheels	<p>Count of loaded rail cars including all rail cars that have been released loaded at origin and have not been reported by the railway as unloaded at destination.</p> <p>Counts include all rail cars (hopper cars and boxcars) moving within a pipeline.</p>
Loads Not Moving	<p>Loaded rail cars for which the railways have not reported a movement event for 48 hours or more whether the rail car is at origin, enroute or at destination.</p>
Port Unloads	<p>Count of rail cars reported by railways as unloaded at the western port destinations of Vancouver, Prince Rupert and Thunder Bay.</p> <p>Unload counts include all rail cars (hopper cars and boxcars) unloaded by all receivers including major port terminals, transloaders and other receivers.</p>
Cars Arrived	<p>Count of rail cars reported as arrived at the destination railway terminal.</p>
Cars Received in Interchange	<p>Count of rail cars received in interchange by each railway within a destination railway terminal. Interchange activity is tracked for the Vancouver and Thunder Bay pipelines as applicable.</p>
Cars Delivered in Interchange	<p>Count of rail cars delivered in interchange by each railway within a destination railway terminal. Interchange activity is tracked for the Vancouver and Thunder Bay pipelines as applicable.</p>
Cars Placed for Unloading	<p>Count of rail cars reported by the railways as placed loaded at the receiver's facility for unloading.</p>
Loads on Wheels at Destination	<p>Count of rail cars that remain under load within the destination railway terminal including rail cars that have been reported as placed for unloading but not yet reported as unloaded.</p>
Waiting Placement for Unloading	<p>Count of rail cars that have been reported as arrived at the destination railway terminal but not reported as placed for unloading by the railway.</p> <p>For the Ports of Vancouver, Prince Rupert and Thunder Bay the count of rail cars waiting placement for unloading is categorized by age – i.e. the elapsed time from arrival at destination to the current report date.</p>