

SPEED READ

- Loads on wheels fell overnight, marking a decline in both CN and CP volumes. On a net basis, volumes fell due to lower traffic across all corridors other than Prince Rupert.
- Network fluidity improved overnight, led by a decline in idle car counts on both CN and CP by 31% (-169) and 16% (-112), respectively. The total count of cars for 4+ days on both railways fell for the fifth consecutive day, down 39% (-152) overnight - currently at 242 cars.
- Week 49 unloads ended ahead of prior week's performance by more than 200 unloads, reflecting improved week over week performance at Prince Rupert and Thunder Bay offset by lower unloads at Vancouver.

=====

Loads on Wheels

- Loads on wheels fell 9% (-704) overnight, due to reduced traffic on both CN and CP - combined total at 6,785, the lowest seen in the last 30 days, and 21% below the trailing 30-day average.
- On a net basis, the decline in loads on wheels indicates lower traffic across all corridors other than Prince Rupert.
- CN volumes declined 6% (-231) overnight, with reduced traffic across all corridors other than Prince Rupert. System wide CN loads on wheels now at 3,854 and 17% below the trailing 30-day average.
- CP volumes decreased significantly by 14% (-453) overnight, driven by a decline in traffic across all corridors - Vancouver, Thunder Bay, USA/MEX and E. Canada. CP system wide loads on wheels now at 2,792, the lowest seen in the last 30 days, and 26% below the trailing 30-day average.
- Vancouver now at 4,110, the lowest seen in the last 30 days, decreased significantly by 11% (-512) overnight, now 17% below the trailing 30-day average.
- The Prince Rupert pipeline now at 1,163, increased slightly by (+4) overnight, and 6% below the trailing 30-day average.
- Thunder Bay volumes decreased significantly by 14% (-137) overnight - presently at 857, the lowest seen in the last 30 days, and 42% below the trailing 30-day average, with 71% of traffic moving on CP.

Hopper Car Rationing

- CP rationed 5 hopper cars in week 48.

Loads Not Moving

- **The count of cars not moving for 48+ hours declined 22% (-281) overnight, marking reduced counts on both CN and CP. Idle car counts now at 970 and 13% below the trailing 30-day average.**
- CN
 - **The count of idle cars for 48+ hours fell 31% (-169) overnight - now at 370 cars.**
 - The number of cars idle for 4+ days fell 44% (-60) overnight - now at 77 cars.
 - The count of cars not moving for 7+ days fell for the third consecutive day, down 58% (-41) overnight - presently at 30 cars.
 - Vancouver represents 17% of all idle cars.
 - In total 50% of all idle cars are dwelling at origin locations.
- CP
 - **CP idle car counts for 48+ hours fell 16% (-112) overnight - now at 600 cars.**
 - The number of cars idle for 4+ days fell for the fifth consecutive day, down 36% (-92) overnight - currently at 165 cars.
 - The number of cars idle for 7+ days increased significantly by 182% (+71) overnight - now at 110 cars.

- Vancouver accounts for 55% of all idle cars.
- In total 23% of all idle cars are dwelling at origin locations.

Port Performance

- CN and CP reported a total of 1,017 cars unloaded at the three major ports, now 8% below the trailing 30-day average. Week 49 unloads ended ahead of last week's pace by more than 200 unloads, reflecting higher unloads at Prince Rupert and Thunder Bay offset by lower unloads at Vancouver.
- Vancouver
 - 759 unloads reported by CN and CP at the Port of Vancouver; CN - 364 and CP - 395. Week 49 unloads concluded behind last week's performance by around 200 unloads.
 - There are 1,000 cars on site at Vancouver with more than 600 cars arriving at the port in the last 24 hours.
 - CN and CP have more than 950 cars in British Columbia en route to Vancouver, with more than 450 cars at Kamloops and west, and 64% of traffic moving on CP.
- Prince Rupert
 - Prince Rupert reported 96 unloads, concluded ahead of last week's unloads by more than 200 unloads.
 - Loads on wheels now above 1,000 cars - now at 1,163 cars.
 - There are 450 cars west of Jasper en route to Prince Rupert.
 - There are 18 cars on site at Prince Rupert with more than 50 cars arriving at the port in the last 24 hours.
- Thunder Bay
 - 162 unloads were reported at Thunder Bay yesterday. Week 49 unloads concluded ahead of last week's pace by around 200 unloads.
 - There are more than 450 cars on site at Thunder Bay with 250 cars arriving at the port in the prior 24 hours.
 - There are 50 cars en route to Thunder Bay from Winnipeg and east.

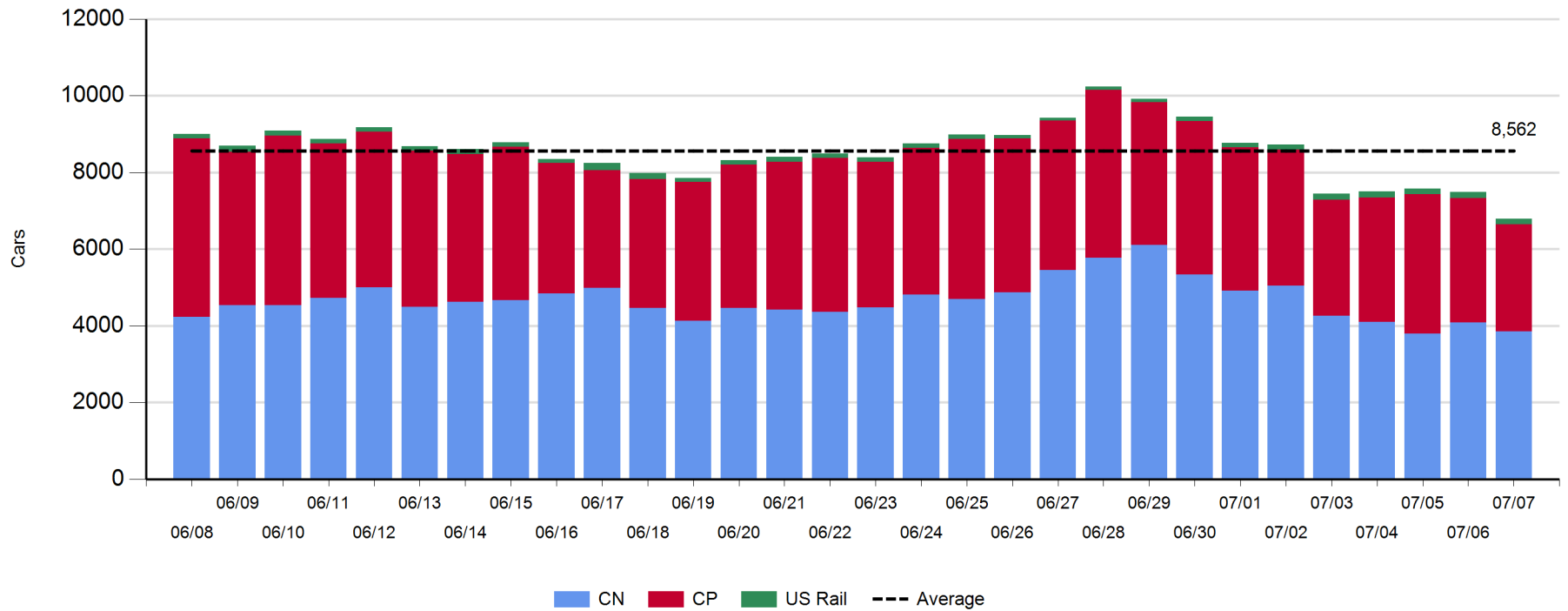
Daily Loads on Wheels - 7/7/2019

	E Canada	Prince Rupert	Thunder Bay	USA/MEX	Vancouver	Total
CN	324	1,163	247	98	2,022	3,854
CP	70		610	76	2,036	2,792
Short Line	9				52	61
US Rail				78		78
	403	1,163	857	252	4,110	6,785

Change in Loads on Wheels - Prior 24 Hours

	E Canada	Prince Rupert	Thunder Bay	USA/MEX	Vancouver	Total
CN	-10		-84	-8	-133	-231
CP	-15		-53	-6	-379	-453
Short Line	2				0	2
US Rail				-22		-22
	-23	4	-137	-36	-512	-704

Loads on Wheels - Prior 30 Days

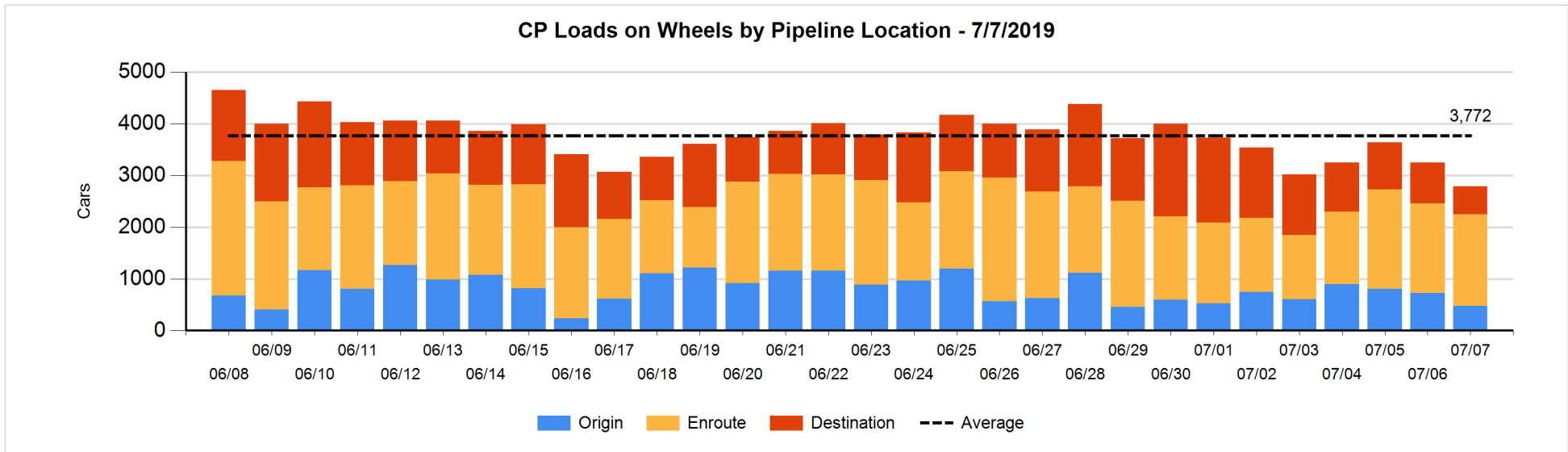
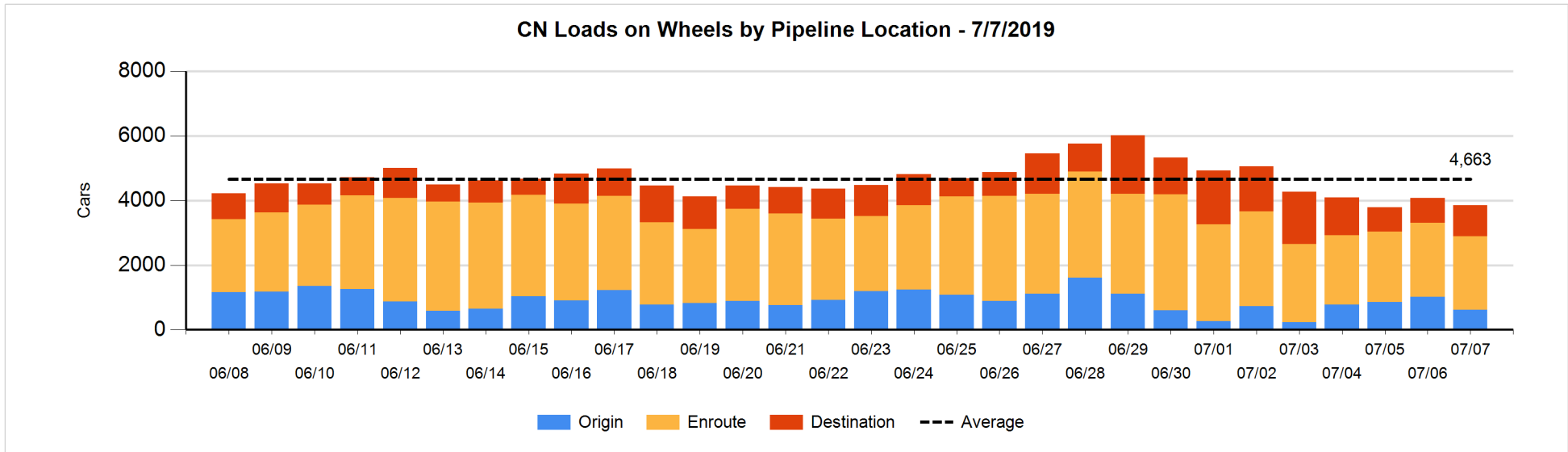


Daily Loads on Wheels By Pipeline Location - 7/7/2019

	E Canada	Prince Rupert	Thunder Bay	USA/MEX	Vancouver	Total
CN						
Origin		282			335	617
Enroute	258	863	2	89	1,063	2,275
Destination	66	18	245	9	624	962
	324	1,163	247	98	2,022	3,854
CP						
Origin	10		100	7	358	475
Enroute	59		293	58	1,359	1,769
Destination	1		217	11	319	548
	70		610	76	2,036	2,792
US Rail / Short Line						
Origin	2					2
Enroute				61		61
Destination	7			17	52	76
	9			78	52	139

Change in Daily Loads on Wheels By Pipeline Location - Prior 24 Hours

	E Canada	Prince Rupert	Thunder Bay	USA/MEX	Vancouver	Total
CN						
Origin	-24	-112			-266	-402
Enroute	-12	137	-146	-7	12	-16
Destination	26	-21	62	-1	121	187
	-10	4	-84	-8	-133	-231
CP						
Origin	-22		-118	0	-106	-246
Enroute	11		33	0	-13	31
Destination	-4		32	-6	-260	-238
	-15		-53	-6	-379	-453
US Rail / Short Line						
Origin	2					2
Enroute				-18		-18
Destination	0			-4	0	-4
	2			-22	0	-20

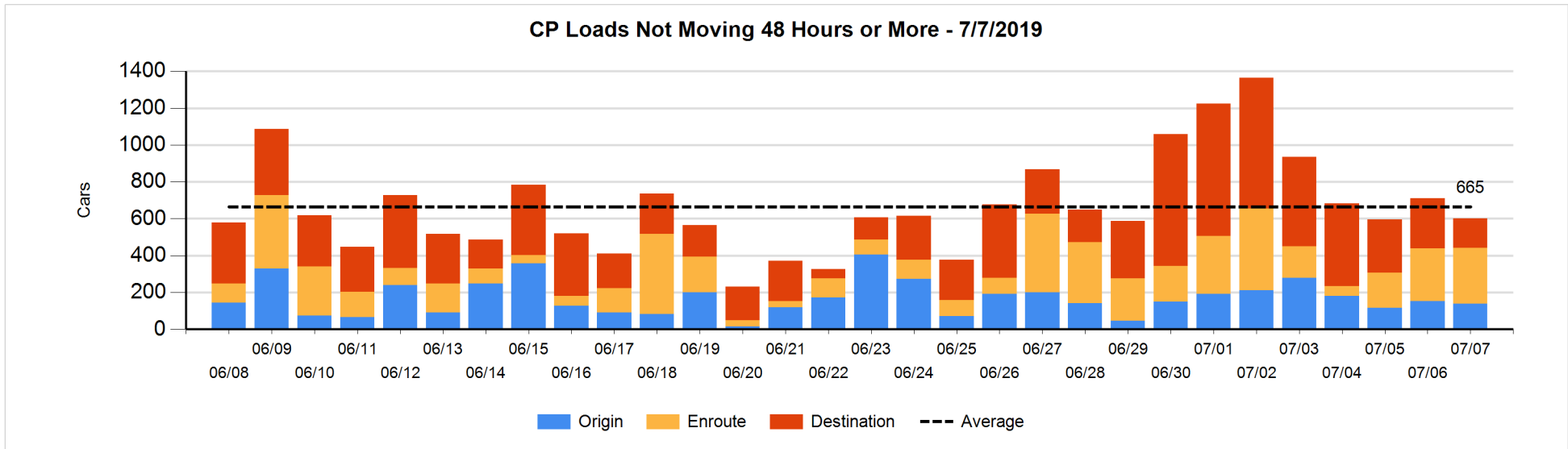
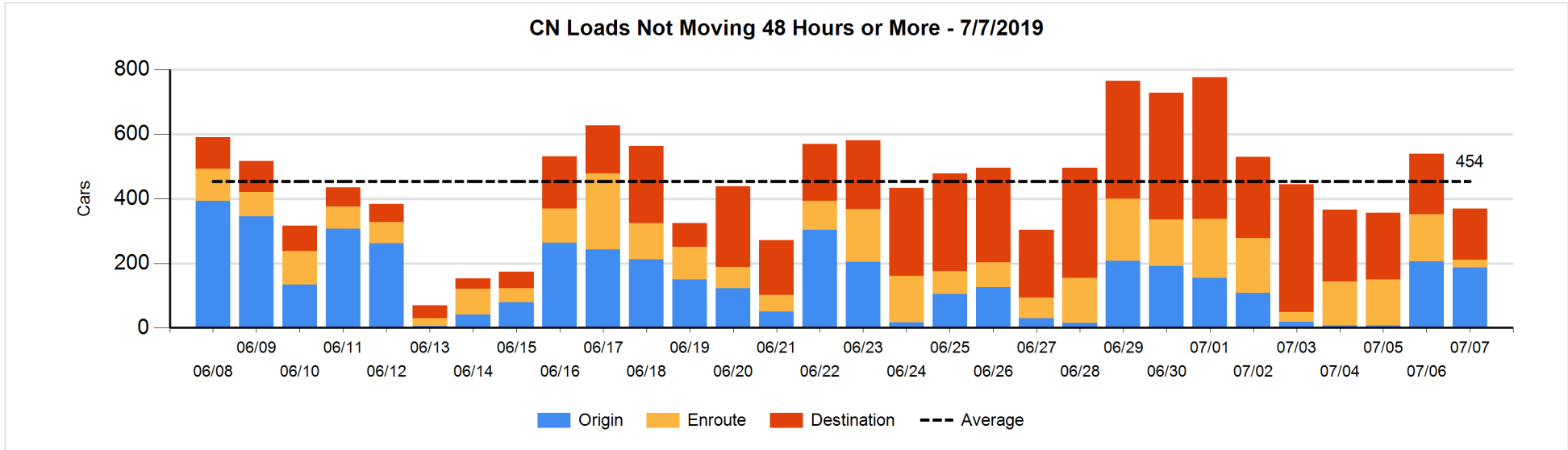


Loads Not Moving 48 Hours or More - 7/7/2019

	E Canada	Prince Rupert	Thunder Bay	USA/MEX	Vancouver	Total
CN						
Origin		174			12	186
Enroute	5	1	2	1	16	25
Destination	25	18	71	9	36	159
	30	193	73	10	64	370
CP						
Origin	10		4	7	118	139
Enroute	4		114	53	132	303
Destination			69	11	78	158
	14		187	71	328	600
US Rail / Short Line						
Origin						
Enroute				19		19
Destination	7			16	31	54
	7			35	31	73

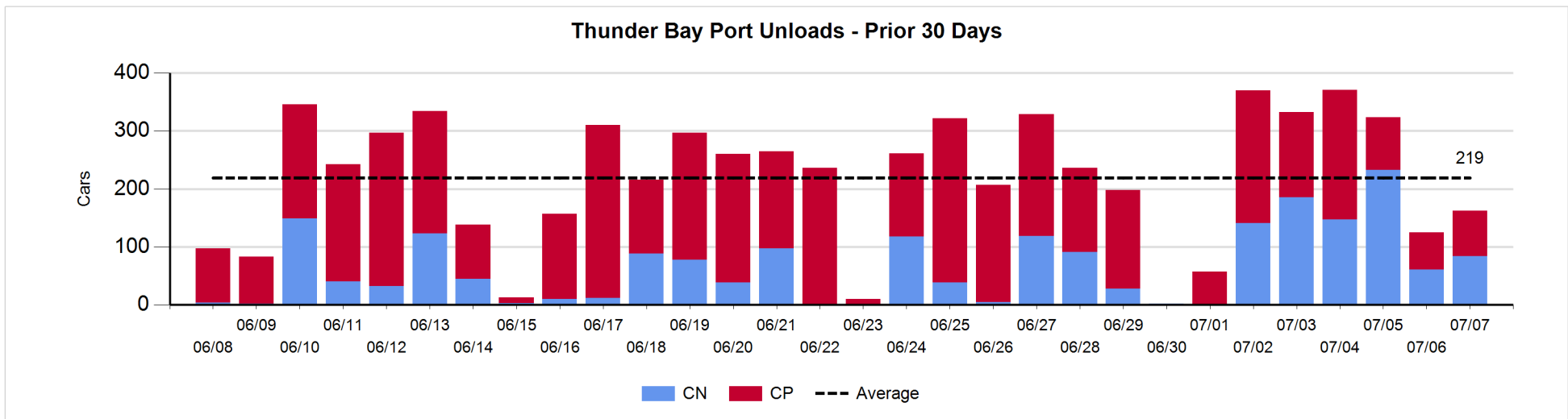
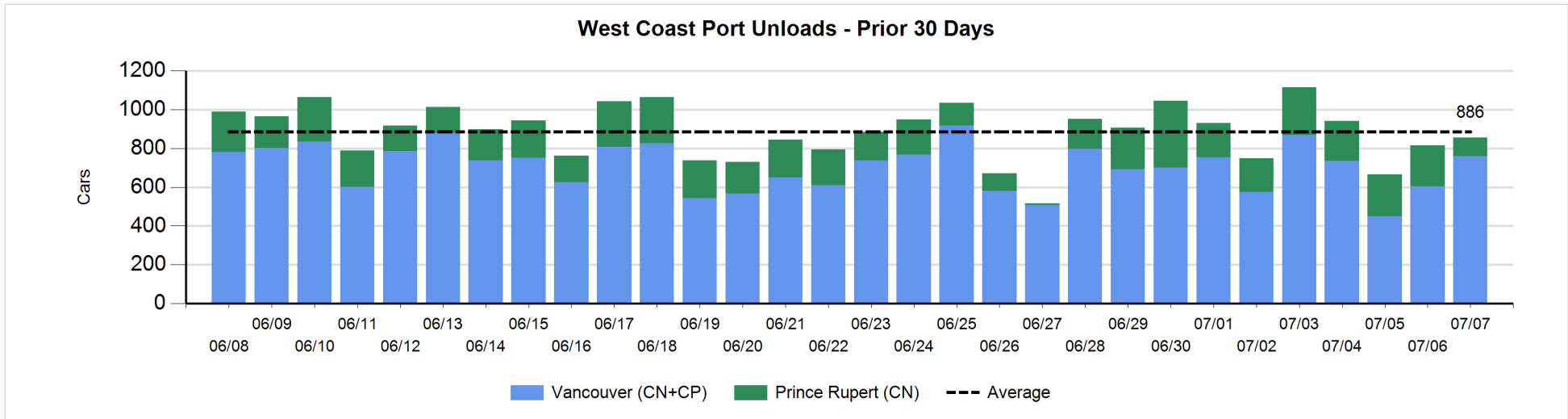
Change in Loads Not Moving 48 Hours or More - 7/7/2019

	E Canada	Prince Rupert	Thunder Bay	USA/MEX	Vancouver	Total
CN						
Origin		2			-22	-20
Enroute	-32	-91	0	0	2	-121
Destination	-10	0	-43	-1	26	-28
	-42	-89	-43	-1	6	-169
CP						
Origin	-16		-106	3	105	-14
Enroute	-8		113	15	-103	17
Destination	-1		-58	-3	-53	-115
	-25		-51	15	-51	-112
US Rail / Short Line						
Origin						
Enroute				-3		-3
Destination	4			0	1	5
	4			-3	1	2



Port Unloads - 7/7/2019

	Prince Rupert	Vancouver	West Coast Total	Thunder Bay	Total
CN	96	364	460	84	544
CP		395	395	78	473
	96	759	855	162	1,017



Port Terminal Status

Vancouver

Daily Activity for 7/7/2019

	Cars Arrived	Cars Received in Interchange	Cars Delivered in Interchange	Cars Placed for Unloading	Loads on Wheels at Destination As of 7/7/2019
CN	377	108	25	412	624
CP	243	25	108	425	319
SRY					52

Port Unloads

	07/07	07/06	Week To Date	Last Week
CN	364	215	1,962	2,014
CP	395	389	2,783	2,944
SRY		3	77	49

Age Profile of Loaded Cars Waiting Placement for Unloading

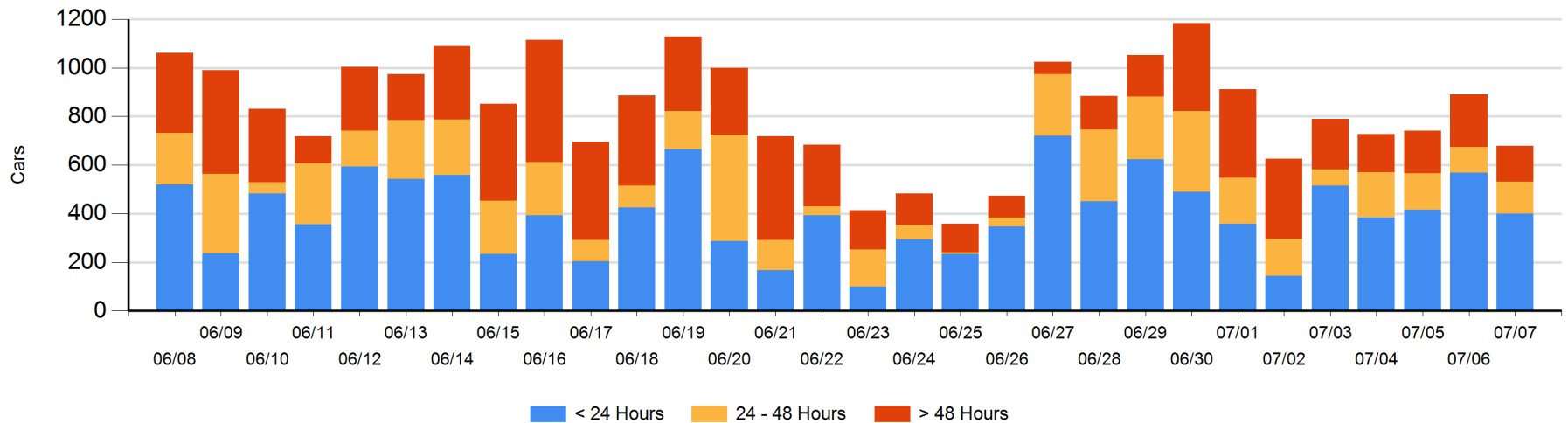
Today

	< 24 Hrs	24 - 48 Hrs	> 48-72 Hrs	> 72 Hrs	Total On Hand
CN	372	79		64	515
CP	28	53	7	76	164
SRY					0

Change in Last 24 Hours

	< 24 Hrs	24-48 Hrs	48 - 72 Hrs	> 72 Hrs
CN	27	46	-7	-7
CP	-196	-19	-58	1
SRY				

Loaded Cars on Hand Vancouver Waiting for Placement - Last 30 Days All Railways



Port Terminal Status

Prince Rupert

Daily Activity for 7/7/2019

	Cars Arrived	Cars Received in Interchange	Cars Delivered in Interchange	Cars Placed for Unloading	Loads on Wheels at Destination As of 7/7/2019
CN	75			75	18

Port Unloads

	07/07	07/06	Week To Date	Last Week
CN	96	212	1,327	1,115

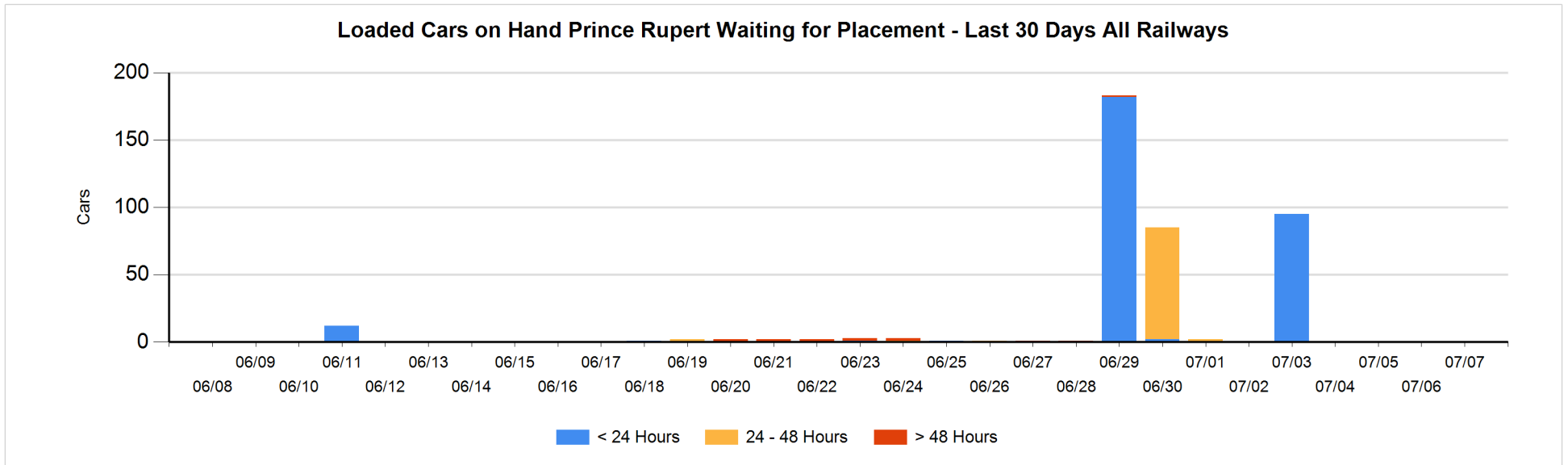
Age Profile of Loaded Cars Waiting Placement for Unloading

Today

	< 24 Hrs	24 - 48 Hrs	> 48-72 Hrs	> 72 Hrs	Total On Hand
CN					0

Change in Last 24 Hours

	< 24 Hrs	24-48 Hrs	48 - 72 Hrs	> 72 Hrs
CN				



Port Terminal Status

Thunder Bay

Daily Activity for 7/7/2019

	Cars Arrived	Cars Received in Interchange	Cars Delivered in Interchange	Cars Placed for Unloading	Loads on Wheels at Destination As of 7/7/2019
CN	146			125	245
CP	109			77	217

Port Unloads

	07/07	07/06	Week To Date	Last Week
CN	84	61	851	401
CP	78	64	889	1,154

Age Profile of Loaded Cars Waiting Placement for Unloading

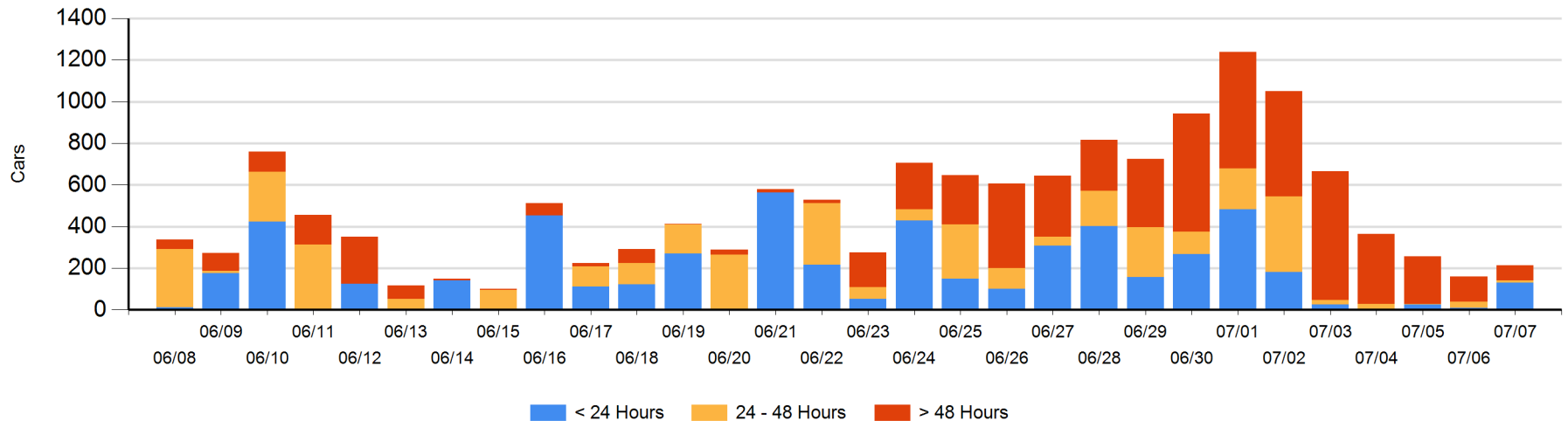
Today

	< 24 Hrs	24 - 48 Hrs	> 48-72 Hrs	> 72 Hrs	Total On Hand
CN	21		28	11	60
CP	109	10		34	153

Change in Last 24 Hours

	< 24 Hrs	24-48 Hrs	48 - 72 Hrs	> 72 Hrs
CN	21	-28	28	0
CP	99	10	-1	-77

Loaded Cars on Hand Thunder Bay Waiting for Placement - Last 30 Days All Railways



Measurement Definitions

Loads on Wheels	<p>Count of loaded rail cars including all rail cars that have been released loaded at origin and have not been reported by the railway as unloaded at destination.</p> <p>Counts include all rail cars (hopper cars and boxcars) moving within a pipeline.</p>
Loads Not Moving	<p>Loaded rail cars for which the railways have not reported a movement event for 48 hours or more whether the rail car is at origin, enroute or at destination.</p>
Port Unloads	<p>Count of rail cars reported by railways as unloaded at the western port destinations of Vancouver, Prince Rupert and Thunder Bay.</p> <p>Unload counts include all rail cars (hopper cars and boxcars) unloaded by all receivers including major port terminals, transloaders and other receivers.</p>
Cars Arrived	<p>Count of rail cars reported as arrived at the destination railway terminal.</p>
Cars Received in Interchange	<p>Count of rail cars received in interchange by each railway within a destination railway terminal. Interchange activity is tracked for the Vancouver and Thunder Bay pipelines as applicable.</p>
Cars Delivered in Interchange	<p>Count of rail cars delivered in interchange by each railway within a destination railway terminal. Interchange activity is tracked for the Vancouver and Thunder Bay pipelines as applicable.</p>
Cars Placed for Unloading	<p>Count of rail cars reported by the railways as placed loaded at the receiver's facility for unloading.</p>
Loads on Wheels at Destination	<p>Count of rail cars that remain under load within the destination railway terminal including rail cars that have been reported as placed for unloading but not yet reported as unloaded.</p>
Waiting Placement for Unloading	<p>Count of rail cars that have been reported as arrived at the destination railway terminal but not reported as placed for unloading by the railway.</p> <p>For the Ports of Vancouver, Prince Rupert and Thunder Bay the count of rail cars waiting placement for unloading is categorized by age – i.e. the elapsed time from arrival at destination to the current report date.</p>