

SPEED READ

- Loads on wheels increased overnight, reflecting an increase in CN traffic offset by lower CP volumes. On a net basis, volumes increased due to higher volumes in the Prince Rupert, Vancouver and Thunder Bay corridors offset by reduced volumes in the USA/MEX and E. Canada corridors.
- Network fluidity deteriorated overnight, led by an increase in idle car counts on both CN and CP by 30% (+97) and 19% (+116), respectively. The total count of cars for 4+ days on both railways increased 8% (+12) overnight - presently at 166 cars.
- Four days in Week 50 unloads **now behind prior week's performance by 1,450 unloads**, marking lower unloads across all three major ports - Vancouver, Thunder Bay and Prince Rupert.

=====

Loads on Wheels

- Loads on wheels increased 9% (+633) overnight, due to higher volumes on CN offset by lower traffic on CP - combined total at 7,539 and 10% below the trailing 30-day average.
- On a net basis, the increase in loads on wheels indicates higher volumes in the Prince Rupert, Vancouver and Thunder Bay corridors offset by reduced volumes in the USA/MEX and E. Canada corridors.
- CN volumes gained significantly by 23% (+819) overnight, with higher traffic across all corridors other than USA/MEX. System wide CN loads on wheels presently at 4,454 and 3% below the trailing 30-day average.
- CP volumes fell 5% (-165) overnight, driven by a decline in traffic across all corridors other than Thunder Bay. CP system wide loads on wheels now at 2,955 and 18% below the trailing 30-day average.
- Vancouver now at 4,130, increased 3% (+127) overnight, now 15% below the trailing 30-day average.
- The Prince Rupert pipeline presently at 1,706, increased significantly by 42% (+504) overnight, and 35% above the trailing 30-day average.
- Thunder Bay volumes increased 5% (+57) overnight - now at 1,094 and 23% below the trailing 30-day average, with 94% of traffic moving on CP.

Hopper Car Rationing

- CP rationed 55 hopper cars in week 49.

Loads Not Moving

- **The count of cars not moving for 48+ hours increased 22% (+213) overnight, marking higher counts on both CN and CP. Idle car counts presently at 1,160 and 8% above the trailing 30-day average.**
- CN
 - **The count of idle cars for 48+ hours increased 30% (+97) overnight - presently at 421 cars.**
 - The number of cars idle for 4+ days fell for the third consecutive day, down 43% (-30) overnight - now at 40 cars.
 - The count of cars not moving for 7+ days decreased significantly by 46% (-17) overnight - presently at 20 cars.
 - Vancouver represents 43% of all idle cars.
 - In total 46% of all idle cars are dwelling at origin locations.
- CP
 - **CP idle car counts for 48+ hours increased 19% (+116) overnight - presently at 739 cars.**
 - The number of cars idle for 4+ days gained significantly by 50% (+42) overnight - presently at 126 cars.
 - The number of cars idle for 7+ days increased 5% (+2) overnight - presently at 40 cars.

- Vancouver accounts for 77% of all idle cars.
- In total 68% of all idle cars are dwelling at origin locations.

Port Performance

- CN and CP reported a total of 759 cars unloaded at the three major ports, now 29% below the trailing 30-day average. Four days in Week 50 unloads now behind last week's pace by 1,450 unloads, marking lower unloads across all three major ports - Vancouver, Thunder Bay and Prince Rupert.
- Vancouver
 - 547 unloads reported by CN and CP at the Port of Vancouver; CN - 315 and CP - 232. **Four days in Week 50 unloads are tracking behind last week's performance by 850 unloads.**
 - There are more than 950 cars on site at Vancouver with around 400 cars arriving at the port in the last 24 hours.
 - CN and CP have less than 900 cars in British Columbia en route to Vancouver, with more than 450 cars at Kamloops and west, and 52% of traffic moving on CP.
- Prince Rupert
 - Prince Rupert reported 34 unloads, **now behind last week's unloads after four days by 250 unloads.**
 - Loads on wheels now above 1,000 cars - presently at 1,706 cars.
 - There are around 450 cars west of Jasper en route to Prince Rupert.
 - There are 100 cars on site at Prince Rupert with more than 100 cars arriving at the port in the last 24 hours.
- Thunder Bay
 - 178 unloads were reported at Thunder Bay yesterday. **Four days in Week 50 unloads are tracking behind last week's pace by 350 unloads.**
 - There are 300 cars on site at Thunder Bay with fewer than 100 cars arriving at the port in the prior 24 hours.
 - There are more than 50 cars en route to Thunder Bay from Winnipeg and east.

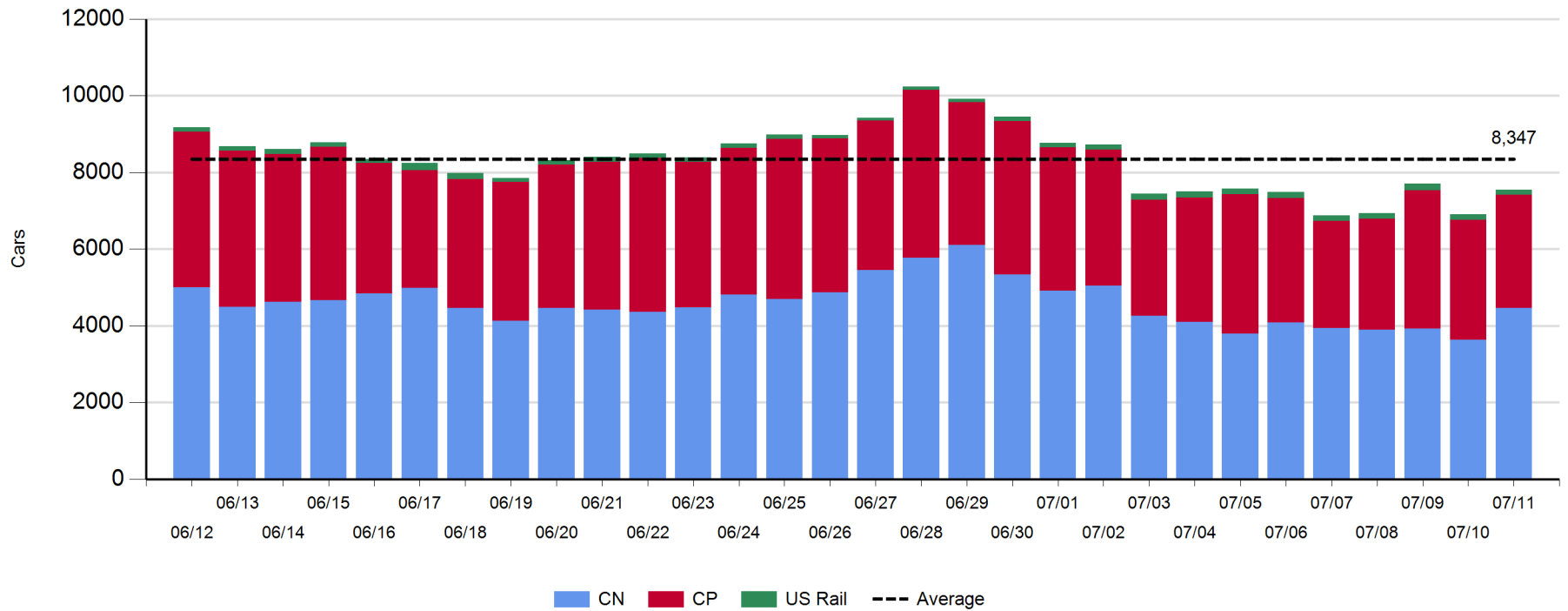
Daily Loads on Wheels - 7/11/2019

	E Canada	Prince Rupert	Thunder Bay	USA/MEX	Vancouver	Total
CN	303	1,706	65	90	2,290	4,454
CP	75		1,029	64	1,787	2,955
Short Line	6				53	59
US Rail				71		71
	384	1,706	1,094	225	4,130	7,539

Change in Loads on Wheels - Prior 24 Hours

	E Canada	Prince Rupert	Thunder Bay	USA/MEX	Vancouver	Total
CN	43	504	48	-1	225	819
CP	-56		9	-30	-88	-165
Short Line	0				-10	-10
US Rail				-11		-11
	-13	504	57	-42	127	633

Loads on Wheels - Prior 30 Days

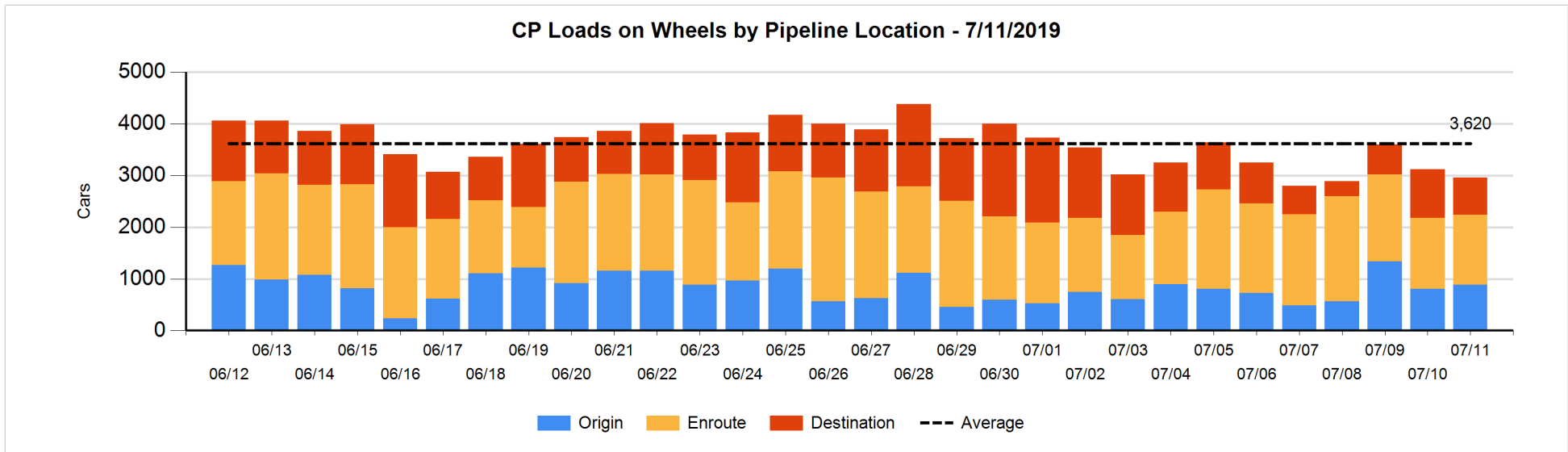
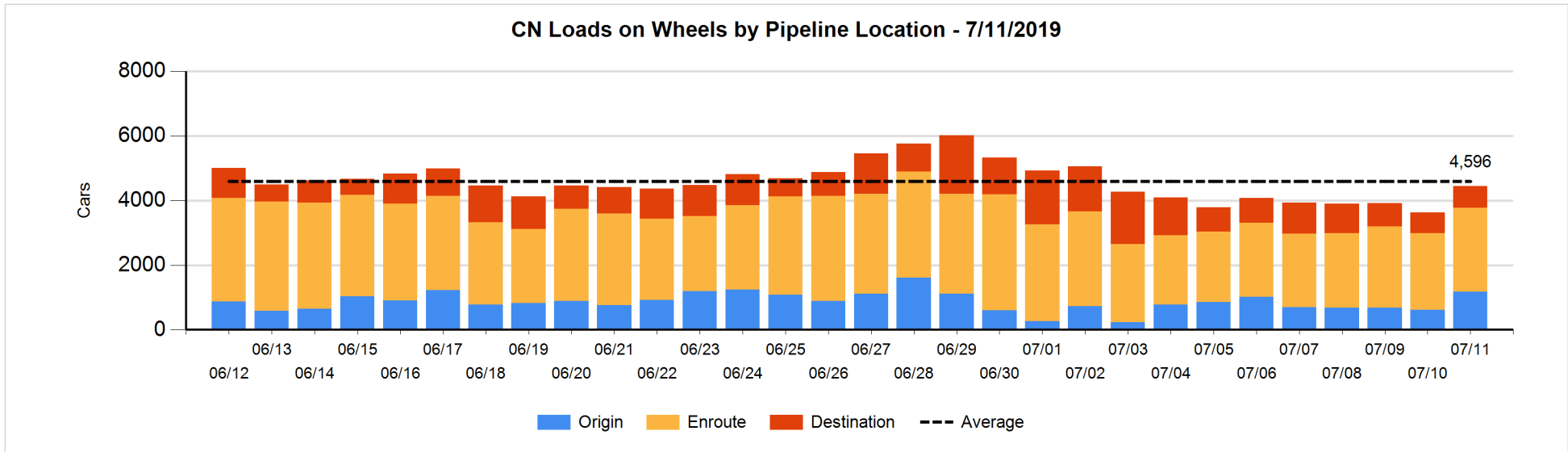


Daily Loads on Wheels By Pipeline Location - 7/11/2019

	E Canada	Prince Rupert	Thunder Bay	USA/MEX	Vancouver	Total
CN						
Origin		733	48		391	1,172
Enroute	242	877	8	78	1,391	2,596
Destination	61	96	9	12	508	686
	303	1,706	65	90	2,290	4,454
CP						
Origin	57		201	12	612	882
Enroute	18		531	45	764	1,358
Destination			297	7	411	715
	75		1,029	64	1,787	2,955
US Rail / Short Line						
Origin						
Enroute				41		41
Destination	6			30	53	89
	6			71	53	130

Change in Daily Loads on Wheels By Pipeline Location - Prior 24 Hours

	E Canada	Prince Rupert	Thunder Bay	USA/MEX	Vancouver	Total
CN						
Origin	-36	429	41	-12	134	556
Enroute	76	-3	7	12	129	221
Destination	3	78	0	-1	-38	42
	43	504	48	-1	225	819
CP						
Origin	-29		70	-2	38	77
Enroute	-27		30	-20	3	-14
Destination			-91	-8	-129	-228
	-56		9	-30	-88	-165
US Rail / Short Line						
Origin						
Enroute				-9		-9
Destination	0			-2	-10	-12
	0			-11	-10	-21

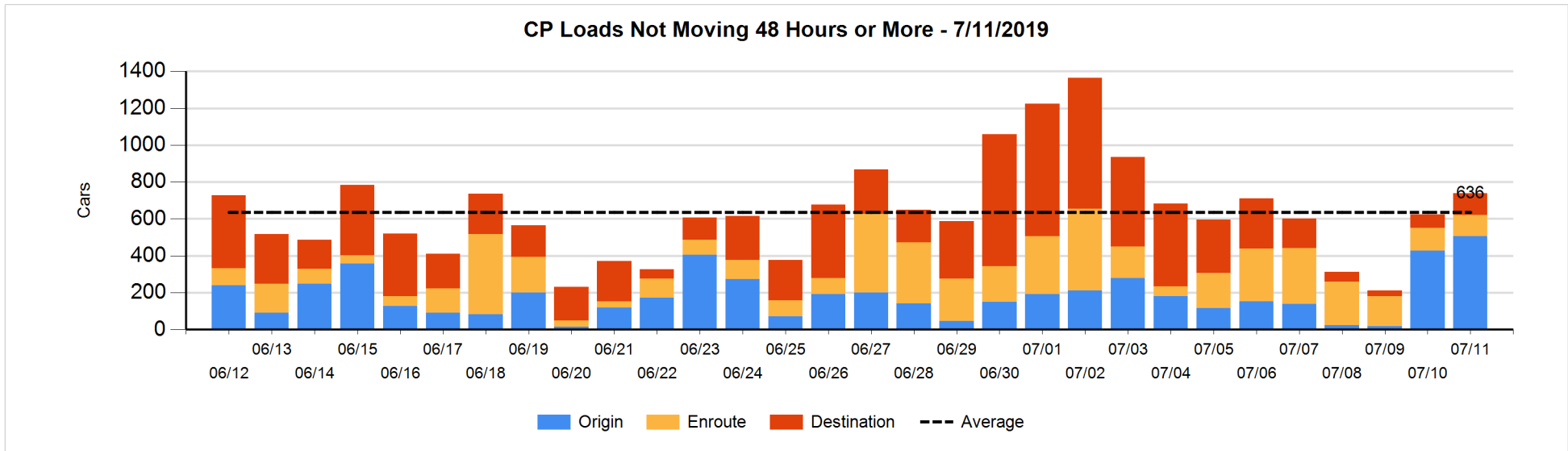
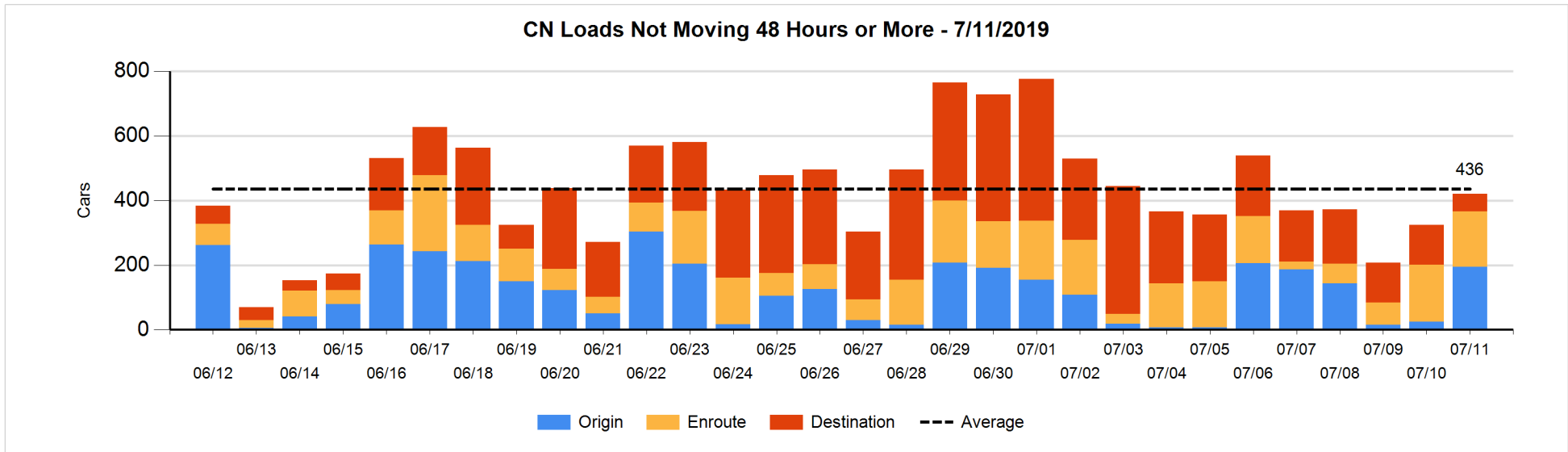


Loads Not Moving 48 Hours or More - 7/11/2019

	E Canada	Prince Rupert	Thunder Bay	USA/MEX	Vancouver	Total
CN						
Origin		150			45	195
Enroute	33	5	1	2	130	171
Destination	33		8	7	7	55
	66	155	9	9	182	421
CP						
Origin	57			9	440	506
Enroute	3		63	16	34	116
Destination			23		94	117
	60		86	25	568	739
US Rail / Short Line						
Origin						
Enroute				14		14
Destination	5			21	43	69
	5			35	43	83

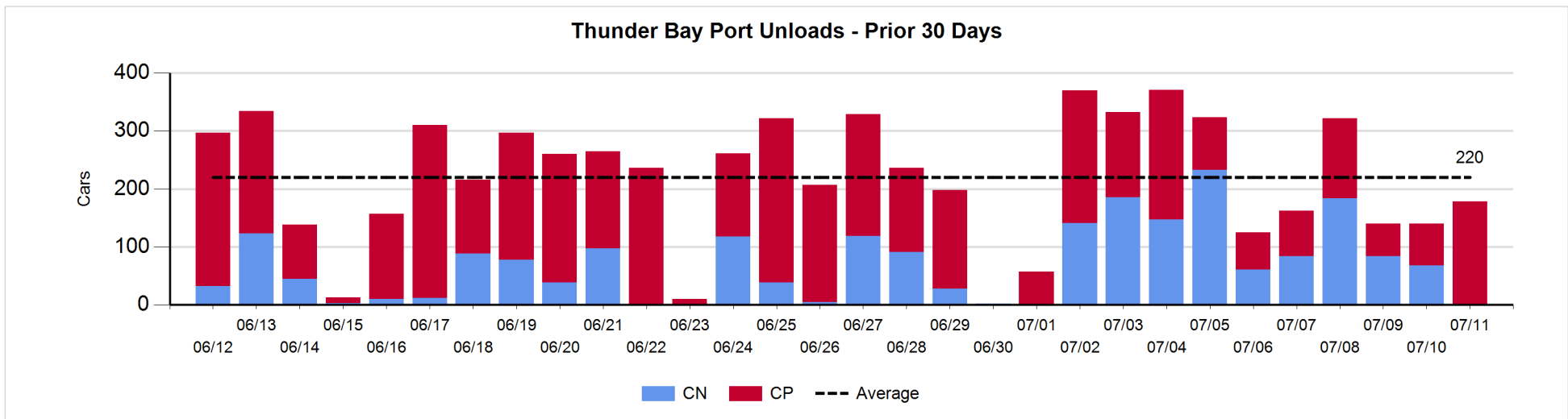
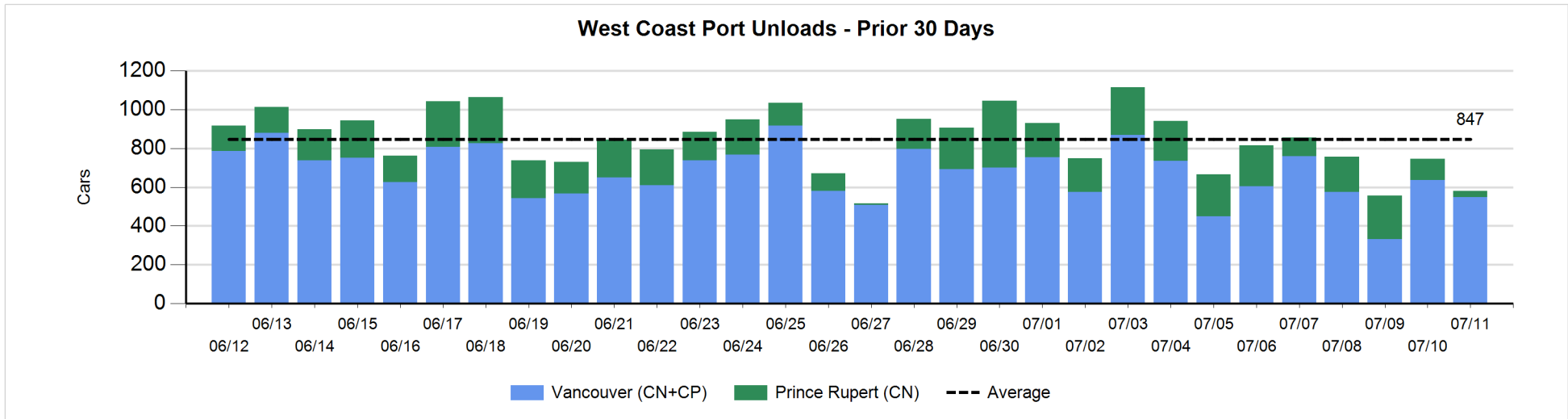
Change in Loads Not Moving 48 Hours or More - 7/11/2019

	E Canada	Prince Rupert	Thunder Bay	USA/MEX	Vancouver	Total
CN						
Origin		150		-6	26	170
Enroute	-2	-1	1	0	-3	-5
Destination	15	-18	1	0	-66	-68
	13	131	2	-6	-43	97
CP						
Origin	28		-4	6	48	78
Enroute	1		-7	-5	3	-8
Destination			-18		64	46
	29		-29	1	115	116
US Rail / Short Line						
Origin						
Enroute				0		0
Destination	0			-2	14	12
	0			-2	14	12



Port Unloads - 7/11/2019

	Prince Rupert	Vancouver	West Coast Total	Thunder Bay	Total
CN	34	315	349		349
CP		232	232	178	410
	34	547	581	178	759



Port Terminal Status

Vancouver

Daily Activity for 7/11/2019

	Cars Arrived	Cars Received in Interchange	Cars Delivered in Interchange	Cars Placed for Unloading	Loads on Wheels at Destination As of 7/11/2019
CN	256	112		241	508
CP	124		114	333	411
SRY		2		10	53

Port Unloads

	07/11	07/10	Week To Date	Last Week
CN	315	415	1,366	1,962
CP	232	222	726	2,783
SRY	10	11	50	77

Age Profile of Loaded Cars Waiting Placement for Unloading

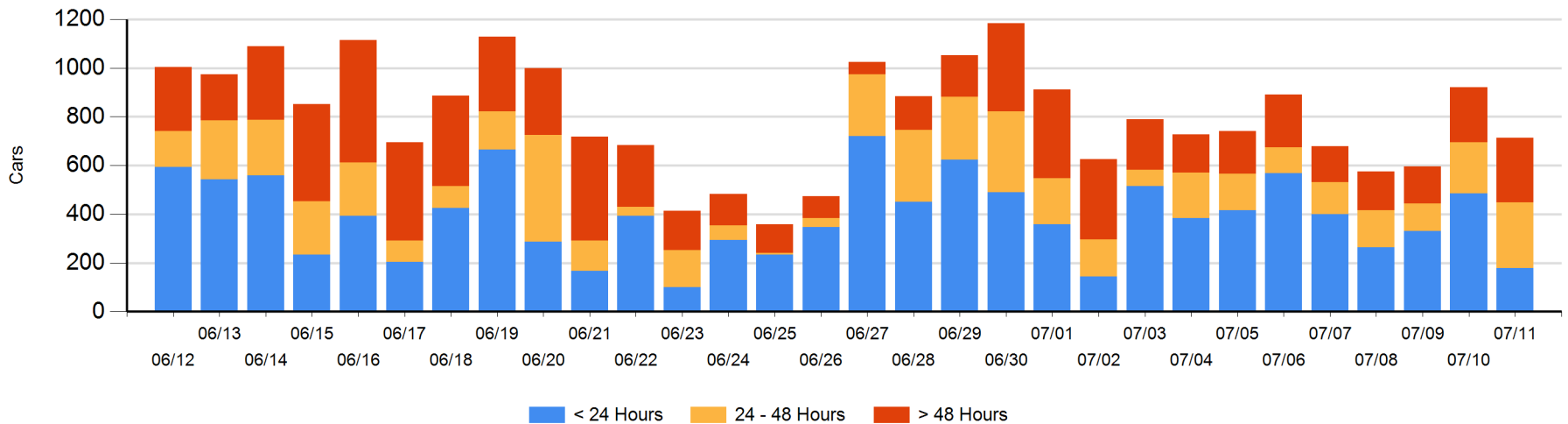
Today

	< 24 Hrs	24 - 48 Hrs	> 48-72 Hrs	> 72 Hrs	Total On Hand
CN	164	158	19	102	443
CP	14	112	61	84	271
SRY					0

Change in Last 24 Hours

	< 24 Hrs	24-48 Hrs	48 - 72 Hrs	> 72 Hrs
CN	-110	133	-12	20
CP	-198	-72	-21	54
SRY				

Loaded Cars on Hand Vancouver Waiting for Placement - Last 30 Days All Railways



Port Terminal Status

Prince Rupert

Daily Activity for 7/11/2019

	Cars Arrived	Cars Received in Interchange	Cars Delivered in Interchange	Cars Placed for Unloading	Loads on Wheels at Destination As of 7/11/2019
CN	112			112	96

Port Unloads

	07/11	07/10	Week To Date	Last Week
CN	34	109	548	1,327

Age Profile of Loaded Cars Waiting Placement for Unloading

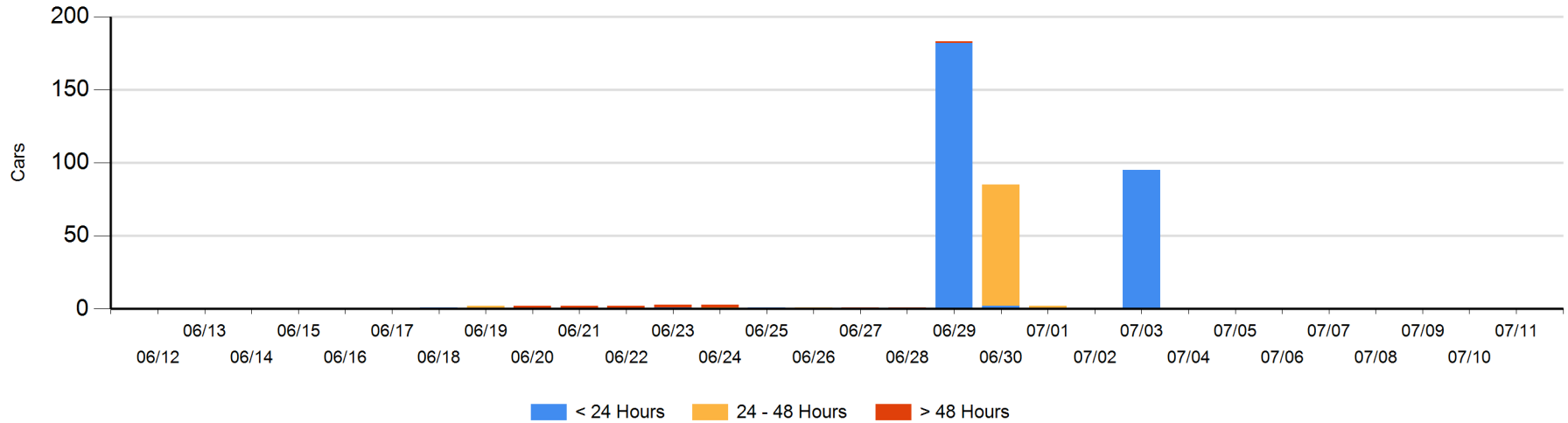
Today

	< 24 Hrs	24 - 48 Hrs	> 48-72 Hrs	> 72 Hrs	Total On Hand
CN					0

Change in Last 24 Hours

	< 24 Hrs	24-48 Hrs	48 - 72 Hrs	> 72 Hrs
CN				

Loaded Cars on Hand Prince Rupert Waiting for Placement - Last 30 Days All Railways



Port Terminal Status

Thunder Bay

Daily Activity for 7/11/2019

	Cars Arrived	Cars Received in Interchange	Cars Delivered in Interchange	Cars Placed for Unloading	Loads on Wheels at Destination As of 7/11/2019
CN					9
CP	87			159	297

Port Unloads

	07/11	07/10	Week To Date	Last Week
CN		68	336	851
CP	178	72	444	889

Age Profile of Loaded Cars Waiting Placement for Unloading

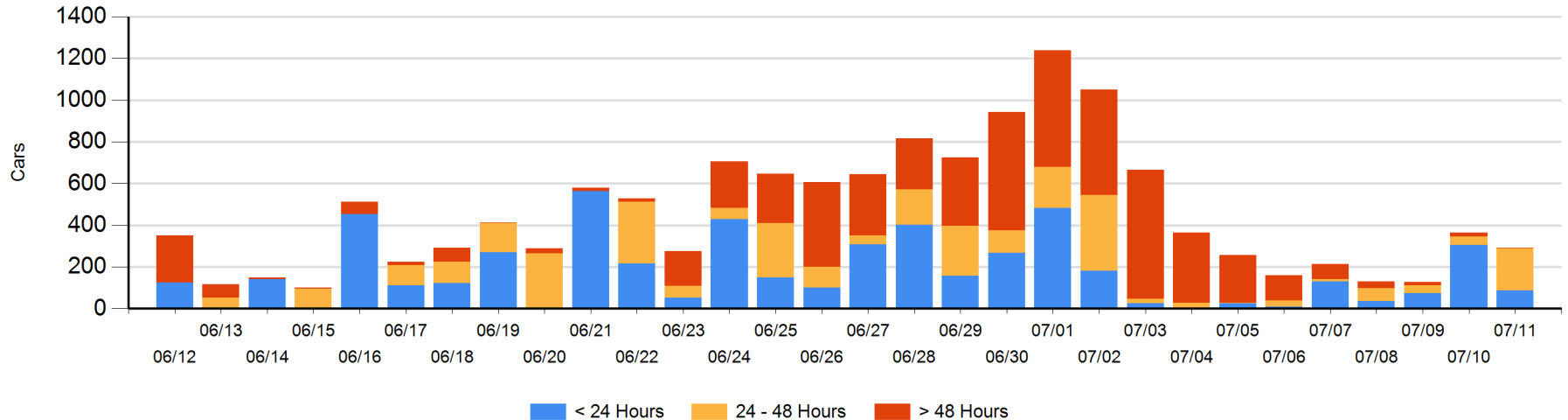
Today

	< 24 Hrs	24 - 48 Hrs	> 48-72 Hrs	> 72 Hrs	Total On Hand
CN		1			1
CP	86	205		1	292

Change in Last 24 Hours

	< 24 Hrs	24-48 Hrs	48 - 72 Hrs	> 72 Hrs
CN	-1	1		
CP	-217	163	-18	0

Loaded Cars on Hand Thunder Bay Waiting for Placement - Last 30 Days All Railways



Measurement Definitions

Loads on Wheels	<p>Count of loaded rail cars including all rail cars that have been released loaded at origin and have not been reported by the railway as unloaded at destination.</p> <p>Counts include all rail cars (hopper cars and boxcars) moving within a pipeline.</p>
Loads Not Moving	<p>Loaded rail cars for which the railways have not reported a movement event for 48 hours or more whether the rail car is at origin, enroute or at destination.</p>
Port Unloads	<p>Count of rail cars reported by railways as unloaded at the western port destinations of Vancouver, Prince Rupert and Thunder Bay.</p> <p>Unload counts include all rail cars (hopper cars and boxcars) unloaded by all receivers including major port terminals, transloaders and other receivers.</p>
Cars Arrived	<p>Count of rail cars reported as arrived at the destination railway terminal.</p>
Cars Received in Interchange	<p>Count of rail cars received in interchange by each railway within a destination railway terminal. Interchange activity is tracked for the Vancouver and Thunder Bay pipelines as applicable.</p>
Cars Delivered in Interchange	<p>Count of rail cars delivered in interchange by each railway within a destination railway terminal. Interchange activity is tracked for the Vancouver and Thunder Bay pipelines as applicable.</p>
Cars Placed for Unloading	<p>Count of rail cars reported by the railways as placed loaded at the receiver's facility for unloading.</p>
Loads on Wheels at Destination	<p>Count of rail cars that remain under load within the destination railway terminal including rail cars that have been reported as placed for unloading but not yet reported as unloaded.</p>
Waiting Placement for Unloading	<p>Count of rail cars that have been reported as arrived at the destination railway terminal but not reported as placed for unloading by the railway.</p> <p>For the Ports of Vancouver, Prince Rupert and Thunder Bay the count of rail cars waiting placement for unloading is categorized by age – i.e. the elapsed time from arrival at destination to the current report date.</p>