

SPEED READ

- Loads on wheels increased slightly overnight, reflecting a rise in CN volumes offset by lower CP volumes. On a net basis, volumes increased due to higher traffic in the USA/MEX and E. Canada corridors offset by lower volumes in the Vancouver, Thunder Bay and Prince Rupert corridors.
- Network fluidity improved overnight, led by a decline in idle car counts on both CN and CP by 40% (-429) and 30% (-187), respectively. The total count of cars for 4+ days on both railways decreased 5% (-45) overnight - currently at 806 cars.
- Two days in Week 51 unloads now behind prior week's performance by nearly 50 unloads, reflecting lower unloads at Prince Rupert offset by improved week over week performance at Vancouver and Thunder Bay.

Loads on Wheels

- Loads on wheels increased slightly by (+22) overnight, due to higher volumes on CN offset by lower traffic on CP - combined total at 8,428 and 2% above the trailing 30-day average.
- On a net basis, the rise in loads on wheels indicates higher traffic in the USA/MEX and E. Canada corridors offset by lower volumes in the Vancouver, Thunder Bay and Prince Rupert corridors.
- CN volumes increased for the third consecutive day, up 3% (+122) overnight, with higher volumes in the E. Canada, Thunder Bay and USA/MEX corridors offset by lower volumes in the Vancouver and Prince Rupert corridors. System wide CN loads on wheels now at 4,560 and 1% above the trailing 30-day average.
- CP volumes decreased 2% (-94) overnight, driven by a decline in volumes across all corridors other than USA/MEX. CP system wide loads on wheels currently at 3,757 and 4% above the trailing 30-day average.
- Vancouver now at 4,872, declined 3% (-150) overnight, now 2% above the trailing 30-day average.
- The Prince Rupert pipeline presently at 1,230, decreased marginally by (-4) overnight and have now decreased for the fifth consecutive day, and 2% below the trailing 30-day average.
- Thunder Bay volumes fell 2% (-37) overnight - now at 1,460 and 1% above the trailing 30-day average, with 79% of traffic moving on CP.

Hopper Car Rationing

- CP rationed 55 hopper cars in week 49. No hopper car rationing yet reported for either CN or CP in week 50.

Loads Not Moving

- **The count of cars not moving for 48+ hours decreased 37% (-616) overnight, reflecting lower counts on both CN and CP. Idle car counts now at 1,063 and 8% below the trailing 30-day average.**
- CN
 - **The count of idle cars for 48+ hours decreased 40% (-429) overnight - now at 631 cars.**
 - The number of cars idle for 4+ days decreased 29% (-200) overnight - now at 493 cars.
 - The count of cars not moving for 7+ days increased significantly by 225% (+45) overnight - now at 65 cars.
 - Vancouver represents 34% of all idle cars.
 - In total 90% of all idle cars are dwelling at origin locations.
- CP
 - **CP idle car counts for 48+ hours declined 30% (-187) overnight - presently at 432 cars.**

- The number of cars idle for 4+ days increased significantly by 98% (+155) overnight - now at 313 cars.
- The number of cars idle for 7+ days increased 8% (+6) overnight - currently at 66 cars.
- Vancouver accounts for 82% of all idle cars.
- In total 38% of all idle cars are dwelling at origin locations.

Port Performance

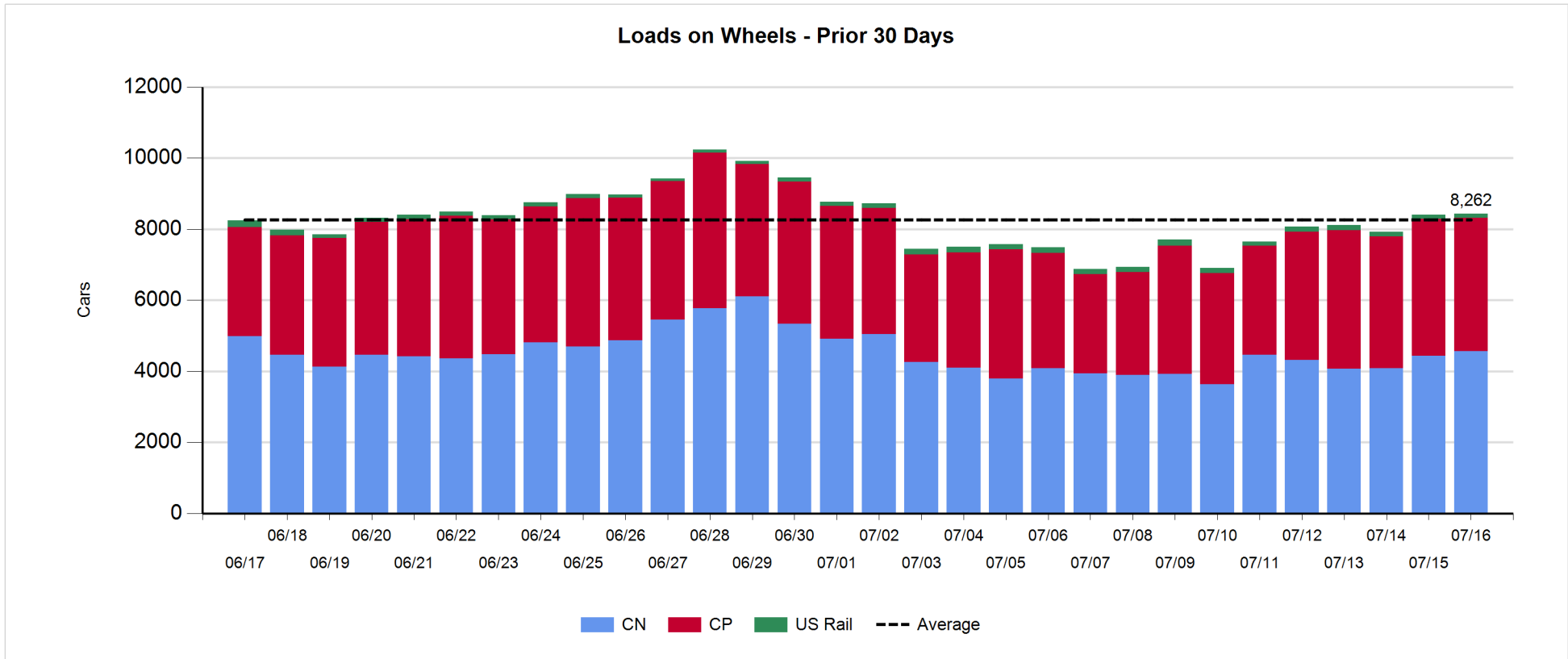
- CN and CP reported a total of 896 cars unloaded at the three major ports, now 13% below the trailing 30-day average. Two days in Week 51 unloads now behind last week's pace by nearly 50 unloads, reflecting lower unloads at Prince Rupert offset by higher unloads at Vancouver and Thunder Bay.
- Vancouver
 - 450 unloads reported by CN and CP at the Port of Vancouver; CN - 234 and CP - 216. Two days in Week 51 unloads are tracking ahead of last week's performance by nearly 100 unloads.
 - There are 1,250 cars on site at Vancouver with more than 800 cars arriving at the port in the last 24 hours.
 - CN and CP have nearly 1,250 cars in British Columbia en route to Vancouver, with more than 450 cars at Kamloops and west, and 53% of traffic moving on CP.
- Prince Rupert
 - Prince Rupert reported 108 unloads, now behind last week's unloads after two days by more than 150 unloads.
 - Loads on wheels now above 1,000 cars - presently at 1,230 cars.
 - There are more than 100 cars west of Jasper en route to Prince Rupert.
 - There are 150 cars on site at Prince Rupert with more than 250 cars arriving at the port in the last 24 hours.
- Thunder Bay
 - 338 unloads were reported at Thunder Bay yesterday. Two days in Week 51 unloads are tracking ahead of last week's pace by 50 unloads.
 - There are 500 cars on site at Thunder Bay with 150 cars arriving at the port in the prior 24 hours.
 - There are 550 cars en route to Thunder Bay from Winnipeg and east.

Daily Loads on Wheels - 7/16/2019

	E Canada	Prince Rupert	Thunder Bay	USA/MEX	Vancouver	Total
CN	465	1,230	310	129	2,426	4,560
CP	49		1,150	146	2,412	3,757
Short Line	4				34	38
US Rail				73		73
	518	1,230	1,460	348	4,872	8,428

Change in Loads on Wheels - Prior 24 Hours

	E Canada	Prince Rupert	Thunder Bay	USA/MEX	Vancouver	Total
CN	119	-4	50	4	-47	122
CP	-19		-87	119	-107	-94
Short Line	-6				4	-2
US Rail				-4		-4
	94	-4	-37	119	-150	22

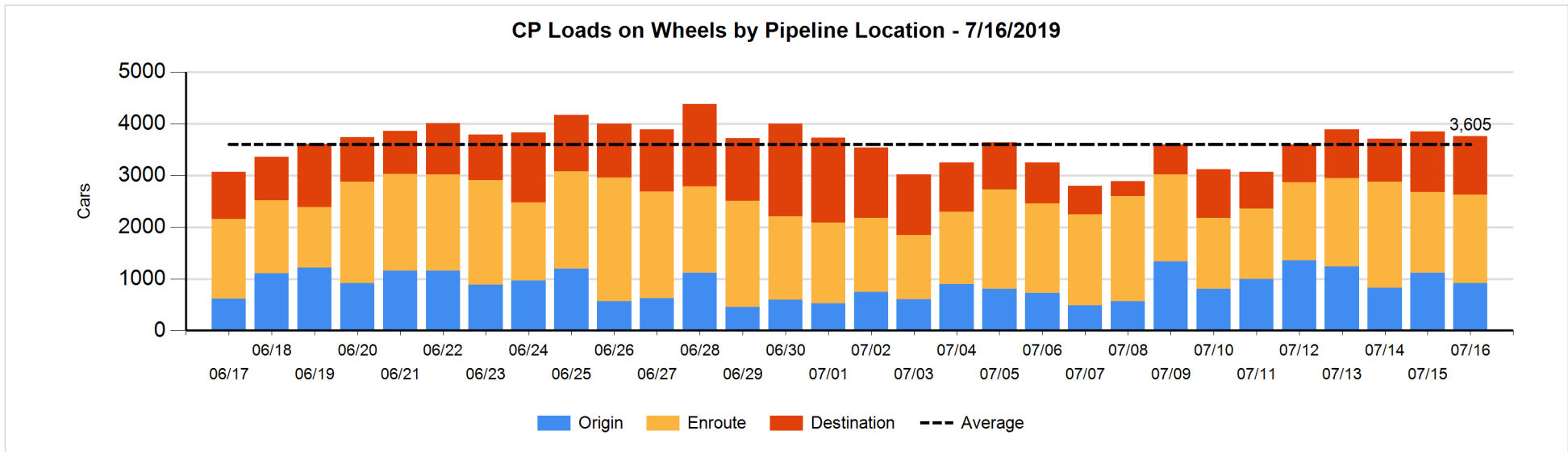
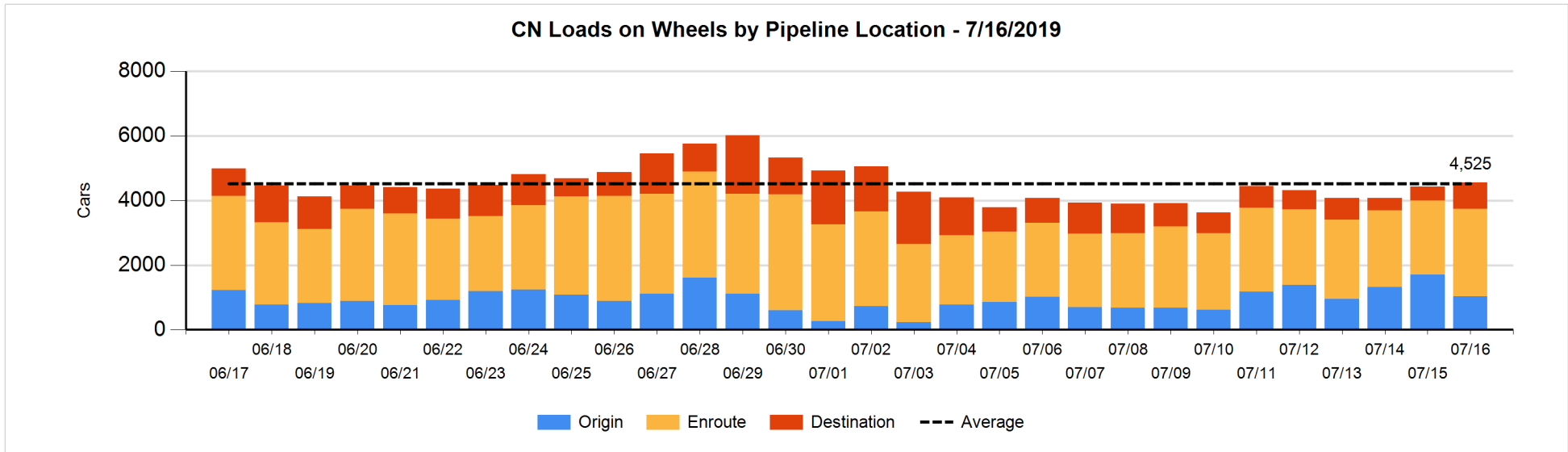


Daily Loads on Wheels By Pipeline Location - 7/16/2019

	E Canada	Prince Rupert	Thunder Bay	USA/MEX	Vancouver	Total
CN						
Origin	109	504		1	425	1,039
Enroute	312	572	258	114	1,444	2,700
Destination	44	154	52	14	557	821
	465	1,230	310	129	2,426	4,560
CP						
Origin	1		268	114	529	912
Enroute	12		442	32	1,232	1,718
Destination	36		440		651	1,127
	49		1,150	146	2,412	3,757
US Rail / Short Line						
Origin						
Enroute				39		39
Destination	4			34	34	72
	4			73	34	111

Change in Daily Loads on Wheels By Pipeline Location - Prior 24 Hours

	E Canada	Prince Rupert	Thunder Bay	USA/MEX	Vancouver	Total
CN						
Origin	6	-196	-100	-55	-326	-671
Enroute	101	38	102	57	112	410
Destination	12	154	48	2	167	383
	119	-4	50	4	-47	122
CP						
Origin	-2		82	109	-392	-203
Enroute	-12		60	11	97	156
Destination	-5		-229	-1	188	-47
	-19		-87	119	-107	-94
US Rail / Short Line						
Origin						
Enroute				-6		-6
Destination	-6			2	4	0
	-6			-4	4	-6

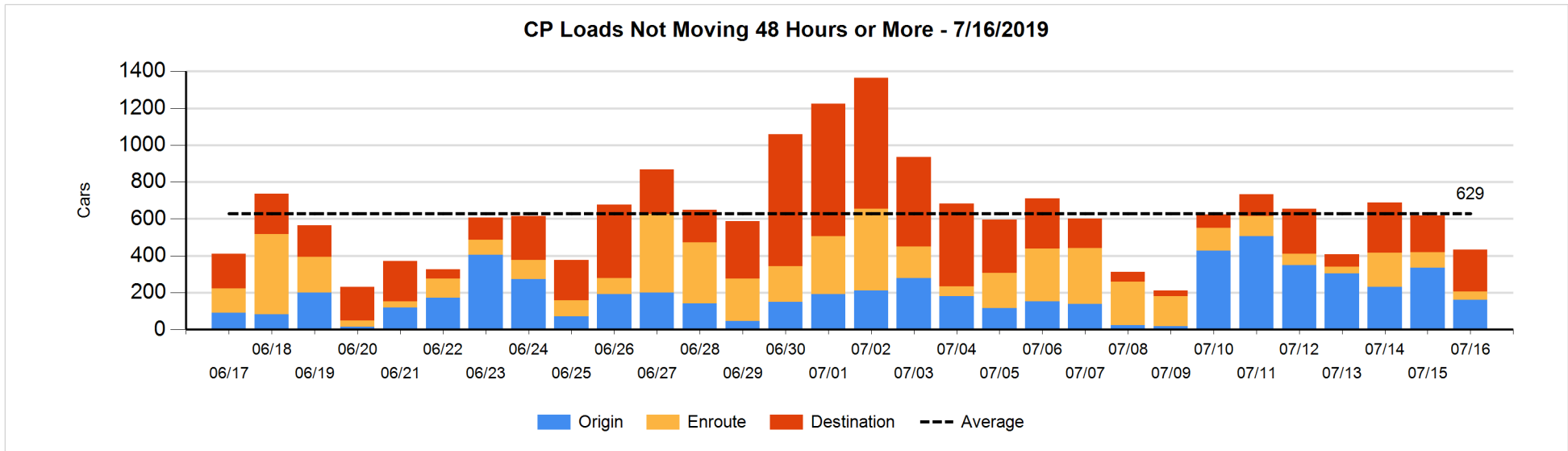
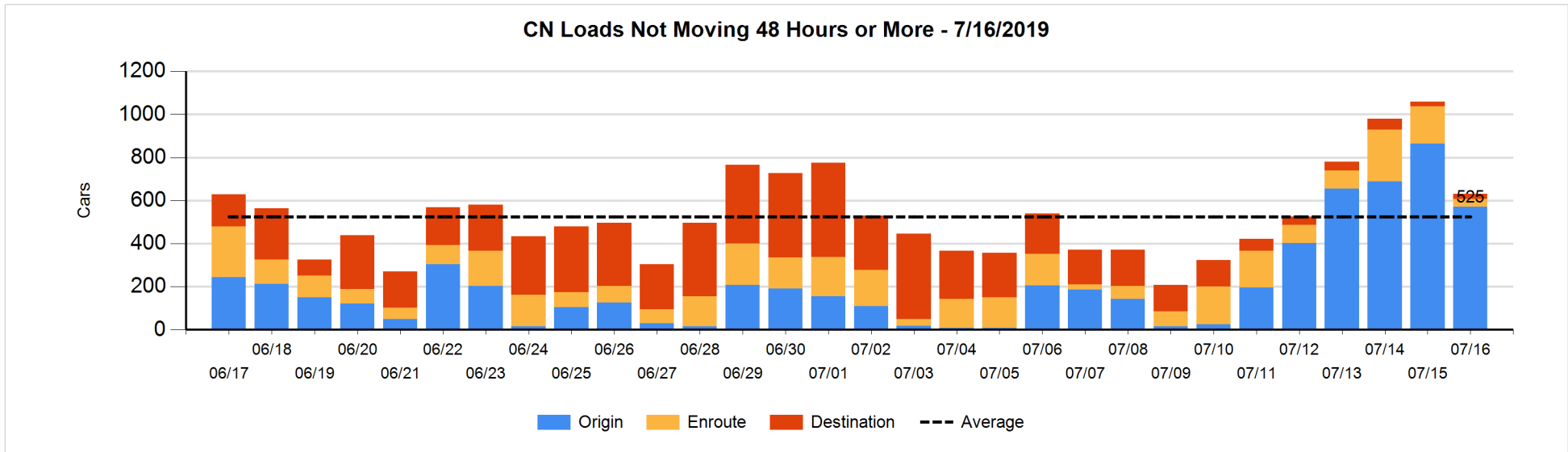


Loads Not Moving 48 Hours or More - 7/16/2019

	E Canada	Prince Rupert	Thunder Bay	USA/MEX	Vancouver	Total
CN						
Origin		378			192	570
Enroute	14	11			12	37
Destination	3		4	4	13	24
	17	389	4	4	217	631
CP						
Origin	1			1	160	162
Enroute	3		8	3	30	44
Destination			62		164	226
	4		70	4	354	432
US Rail / Short Line						
Origin						
Enroute				21		21
Destination	4			25	23	52
	4			46	23	73

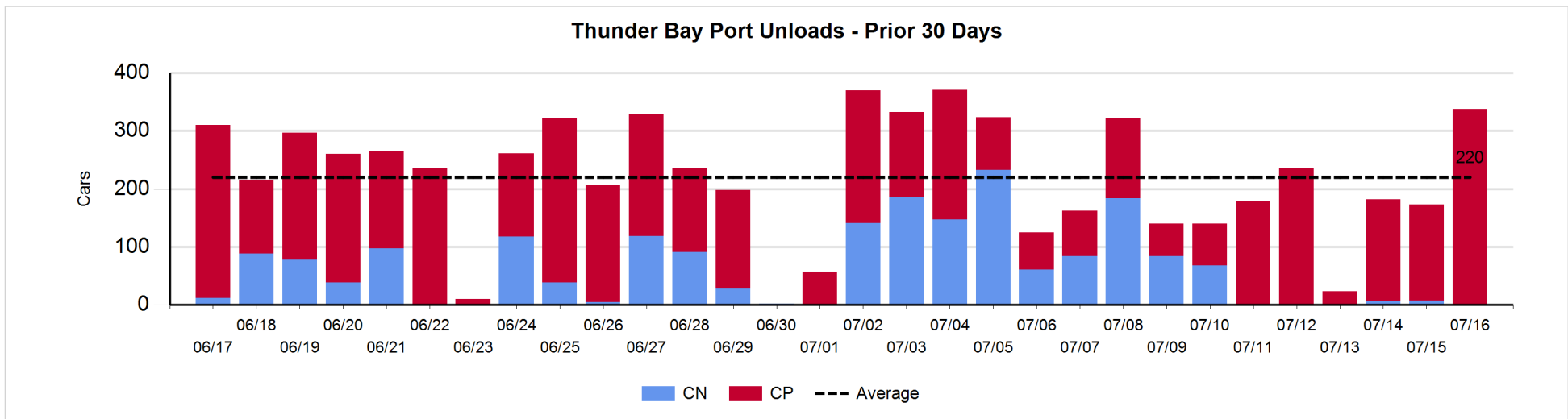
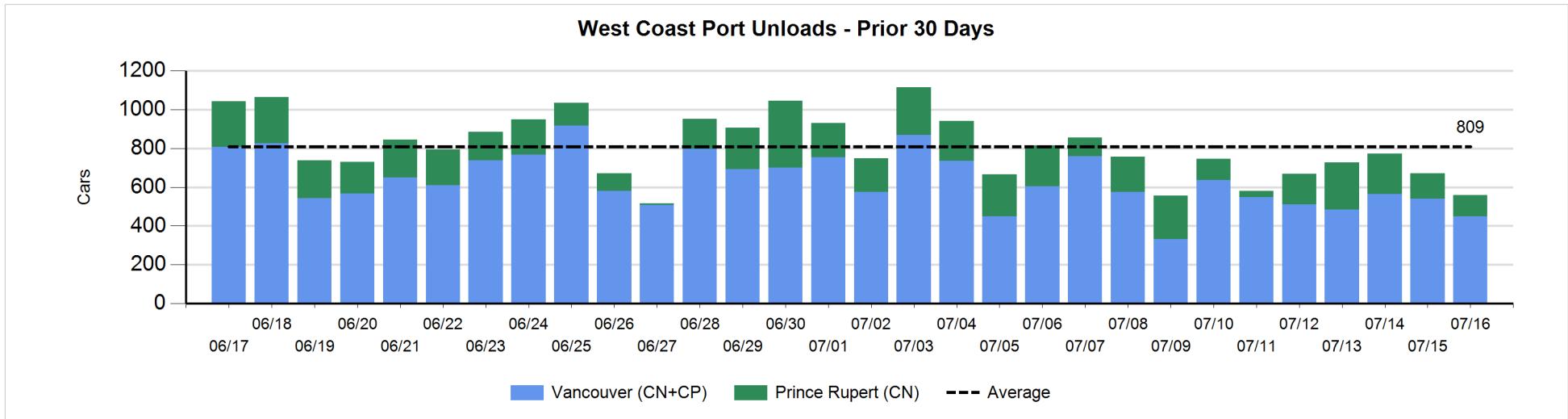
Change in Loads Not Moving 48 Hours or More - 7/16/2019

	E Canada	Prince Rupert	Thunder Bay	USA/MEX	Vancouver	Total
CN						
Origin	-96	-201			2	-295
Enroute	-25	-3		-1	-105	-134
Destination	0		0	1	-1	0
	-121	-204	0	0	-104	-429
CP						
Origin	0		-4	-2	-166	-172
Enroute	0		-38	3	-5	-40
Destination			0	-1	26	25
	0		-42	0	-145	-187
US Rail / Short Line						
Origin						
Enroute				3		3
Destination	-6			5	4	3
	-6			8	4	6



Port Unloads - 7/16/2019

	Prince Rupert	Vancouver	West Coast Total	Thunder Bay	Total
CN	108	234	342		342
CP		216	216	338	554
	108	450	558	338	896



Port Terminal Status

Vancouver

Daily Activity for 7/16/2019

	Cars Arrived	Cars Received in Interchange	Cars Delivered in Interchange	Cars Placed for Unloading	Loads on Wheels at Destination As of 7/16/2019
CN	280	119		235	557
CP	541		137	167	651
SRY	1	18		14	34

Port Unloads

	07/16	07/15	Week To Date	Last Week
CN	234	369	603	2,346
CP	216	172	388	1,304
SRY	14	13	27	67

Age Profile of Loaded Cars Waiting Placement for Unloading

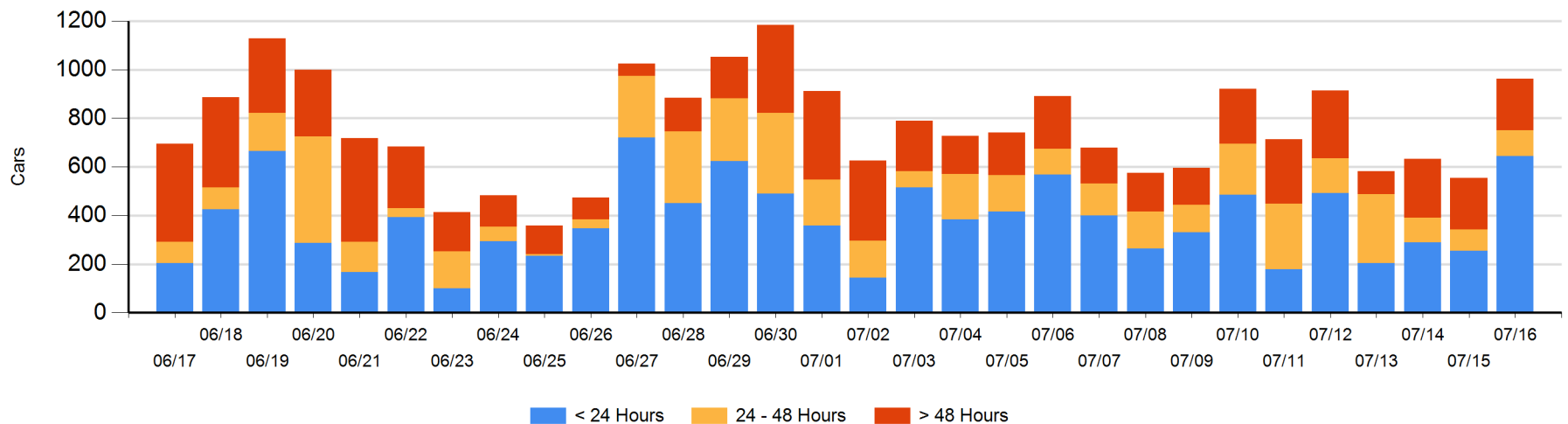
Today

	< 24 Hrs	24 - 48 Hrs	> 48-72 Hrs	> 72 Hrs	Total On Hand
CN	280	83	36	93	492
CP	365	23	41	42	471
SRY					0

Change in Last 24 Hours

	< 24 Hrs	24-48 Hrs	48 - 72 Hrs	> 72 Hrs
CN	184	39	30	-64
CP	207	-22	33	1
SRY				

Loaded Cars on Hand Vancouver Waiting for Placement - Last 30 Days All Railways



Port Terminal Status

Prince Rupert

Daily Activity for 7/16/2019

	Cars Arrived	Cars Received in Interchange	Cars Delivered in Interchange	Cars Placed for Unloading	Loads on Wheels at Destination As of 7/16/2019
CN	262			262	154

Port Unloads

	07/16	07/15	Week To Date	Last Week
CN	108	129	237	1,158

Age Profile of Loaded Cars Waiting Placement for Unloading

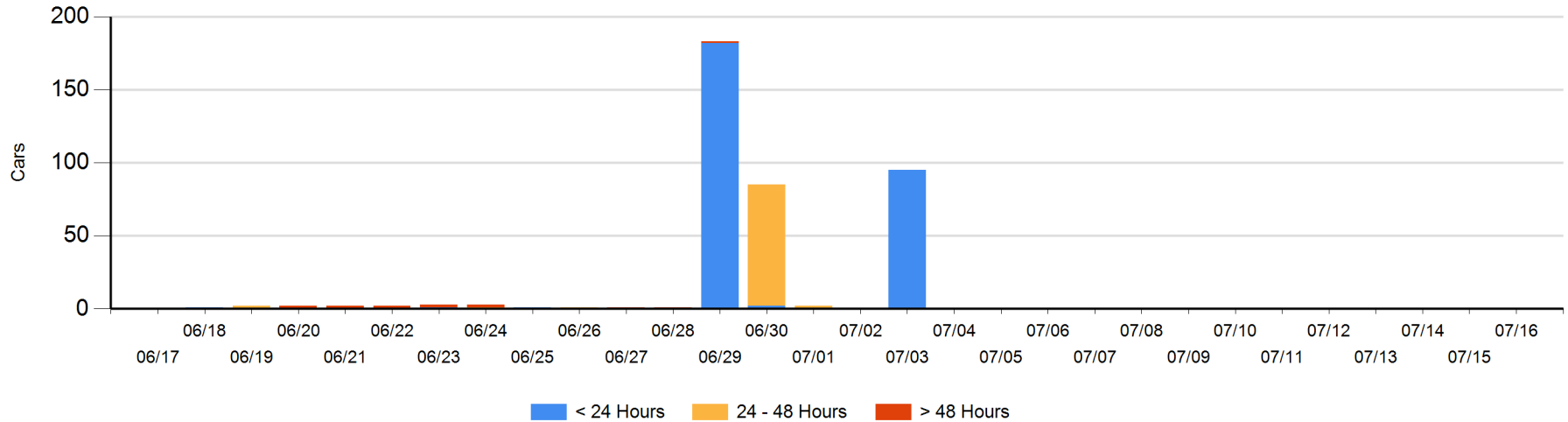
Today

	< 24 Hrs	24 - 48 Hrs	> 48-72 Hrs	> 72 Hrs	Total On Hand
CN					0

Change in Last 24 Hours

	< 24 Hrs	24-48 Hrs	48 - 72 Hrs	> 72 Hrs
CN				

Loaded Cars on Hand Prince Rupert Waiting for Placement - Last 30 Days All Railways



Port Terminal Status

Thunder Bay

Daily Activity for 7/16/2019

	Cars Arrived	Cars Received in Interchange	Cars Delivered in Interchange	Cars Placed for Unloading	Loads on Wheels at Destination As of 7/16/2019
CN	48				52
CP	109			355	440

Port Unloads

	07/16	07/15	Week To Date	Last Week
CN		7	7	342
CP	338	166	504	879

Age Profile of Loaded Cars Waiting Placement for Unloading

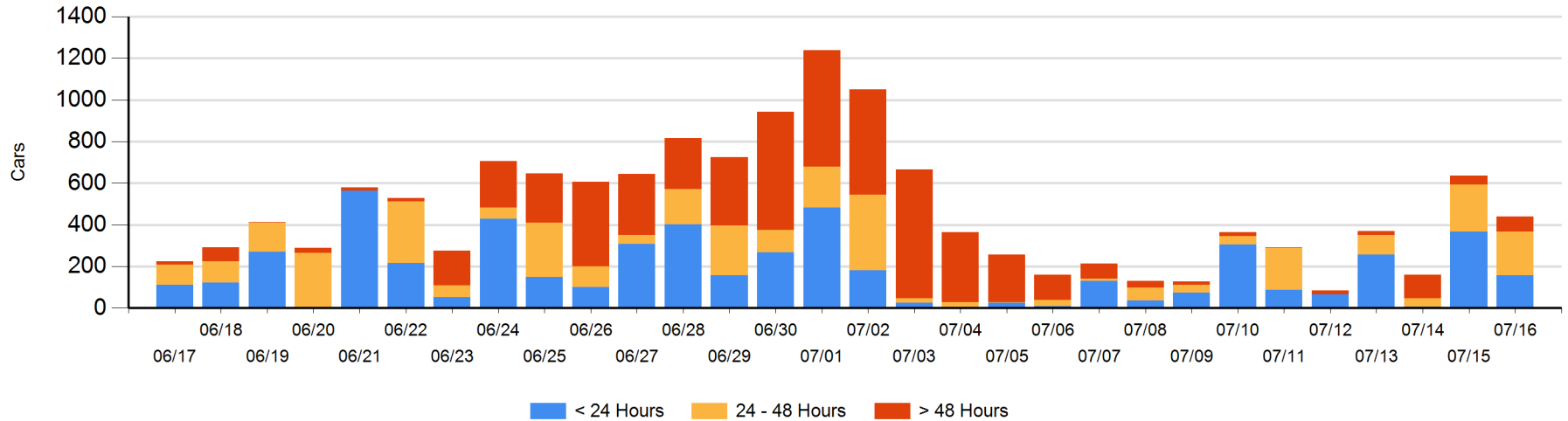
Today

	< 24 Hrs	24 - 48 Hrs	> 48-72 Hrs	> 72 Hrs	Total On Hand
CN	48			2	50
CP	109	210	28	42	389

Change in Last 24 Hours

	< 24 Hrs	24-48 Hrs	48 - 72 Hrs	> 72 Hrs
CN	48			0
CP	-257	-17	3	25

Loaded Cars on Hand Thunder Bay Waiting for Placement - Last 30 Days All Railways



Measurement Definitions

Loads on Wheels	<p>Count of loaded rail cars including all rail cars that have been released loaded at origin and have not been reported by the railway as unloaded at destination.</p> <p>Counts include all rail cars (hopper cars and boxcars) moving within a pipeline.</p>
Loads Not Moving	<p>Loaded rail cars for which the railways have not reported a movement event for 48 hours or more whether the rail car is at origin, enroute or at destination.</p>
Port Unloads	<p>Count of rail cars reported by railways as unloaded at the western port destinations of Vancouver, Prince Rupert and Thunder Bay.</p> <p>Unload counts include all rail cars (hopper cars and boxcars) unloaded by all receivers including major port terminals, transloaders and other receivers.</p>
Cars Arrived	<p>Count of rail cars reported as arrived at the destination railway terminal.</p>
Cars Received in Interchange	<p>Count of rail cars received in interchange by each railway within a destination railway terminal. Interchange activity is tracked for the Vancouver and Thunder Bay pipelines as applicable.</p>
Cars Delivered in Interchange	<p>Count of rail cars delivered in interchange by each railway within a destination railway terminal. Interchange activity is tracked for the Vancouver and Thunder Bay pipelines as applicable.</p>
Cars Placed for Unloading	<p>Count of rail cars reported by the railways as placed loaded at the receiver's facility for unloading.</p>
Loads on Wheels at Destination	<p>Count of rail cars that remain under load within the destination railway terminal including rail cars that have been reported as placed for unloading but not yet reported as unloaded.</p>
Waiting Placement for Unloading	<p>Count of rail cars that have been reported as arrived at the destination railway terminal but not reported as placed for unloading by the railway.</p> <p>For the Ports of Vancouver, Prince Rupert and Thunder Bay the count of rail cars waiting placement for unloading is categorized by age – i.e. the elapsed time from arrival at destination to the current report date.</p>