

SPEED READ

- Loads on wheels decreased overnight, marking a decline in both CN and CP volumes. On a net basis, volumes decreased due to lower traffic across all corridors other than Thunder Bay.
- Network fluidity improved overnight, led by a decline in idle car counts on CN by 57% (-305) offset by an increase in idle car counts on CP by 28% (+133). The total count of cars for 4+ days on both railways increased 13% (+51) overnight - now at 435 cars.
- Three days in Week 52 unloads now ahead of prior week's performance by 700 unloads, reflecting improved week over week performance across all three major ports - Vancouver, Thunder Bay and Prince Rupert.

=====

Loads on Wheels

- Loads on wheels decreased 9% (-698) overnight, due to reduced volumes on both CN and CP - combined total at 7,055 and 14% below the trailing 30-day average.
- On a net basis, the decline in loads on wheels reflects lower traffic across all corridors other than Thunder Bay.
- CN volumes fell significantly by 14% (-552) overnight, with lower volumes across all corridors other than USA/MEX. System wide CN loads on wheels currently at 3,357, the lowest seen in the last 30 days, and 23% below the trailing 30-day average.
- CP volumes decreased 4% (-142) overnight, driven by a decline in volumes across all corridors other than Thunder Bay. CP system wide loads on wheels now at 3,588 and 3% below the trailing 30-day average.
- Vancouver currently at 3,941, decreased significantly by 10% (-442) overnight, now 15% below the trailing 30-day average.
- The Prince Rupert pipeline currently at 775, the lowest seen in the last 30 days, decreased for the fifth consecutive day, down 19% (-177) overnight, and 39% below the trailing 30-day average.
- Thunder Bay volumes rose slightly by 1% (+10) overnight - now at 1,688 and 14% above the trailing 30-day average, with 70% of traffic moving on CP.

Hopper Car Rationing

- No hopper cars were rationed by either CN or CP in week 50.

Loads Not Moving

- **The count of cars not moving for 48+ hours decreased 17% (-172) overnight, marking lower counts on CN offset by higher counts on CP. Idle car counts now at 847 and 31% below the trailing 30-day average.**
- CN
 - **The count of idle cars for 48+ hours fell significantly by 57% (-305) overnight - presently at 234 cars.**
 - The number of cars idle for 4+ days decreased 14% (-20) overnight - now at 127 cars.
 - The count of cars not moving for 7+ days fell significantly by 85% (-97) overnight - currently at 17 cars.
 - Vancouver represents 41% of all idle cars.
 - In total 3% of all idle cars are dwelling at origin locations.
- CP
 - **CP idle car counts for 48+ hours increased 28% (+133) overnight - currently at 613 cars.**
 - The number of cars idle for 4+ days gained for the third consecutive day, up 30% (+71) overnight - currently at 308 cars.
 - The number of cars idle for 7+ days fell 23% (-14) overnight - currently at 47 cars.

- Vancouver accounts for 62% of all idle cars.
- In total 36% of all idle cars are dwelling at origin locations.

Port Performance

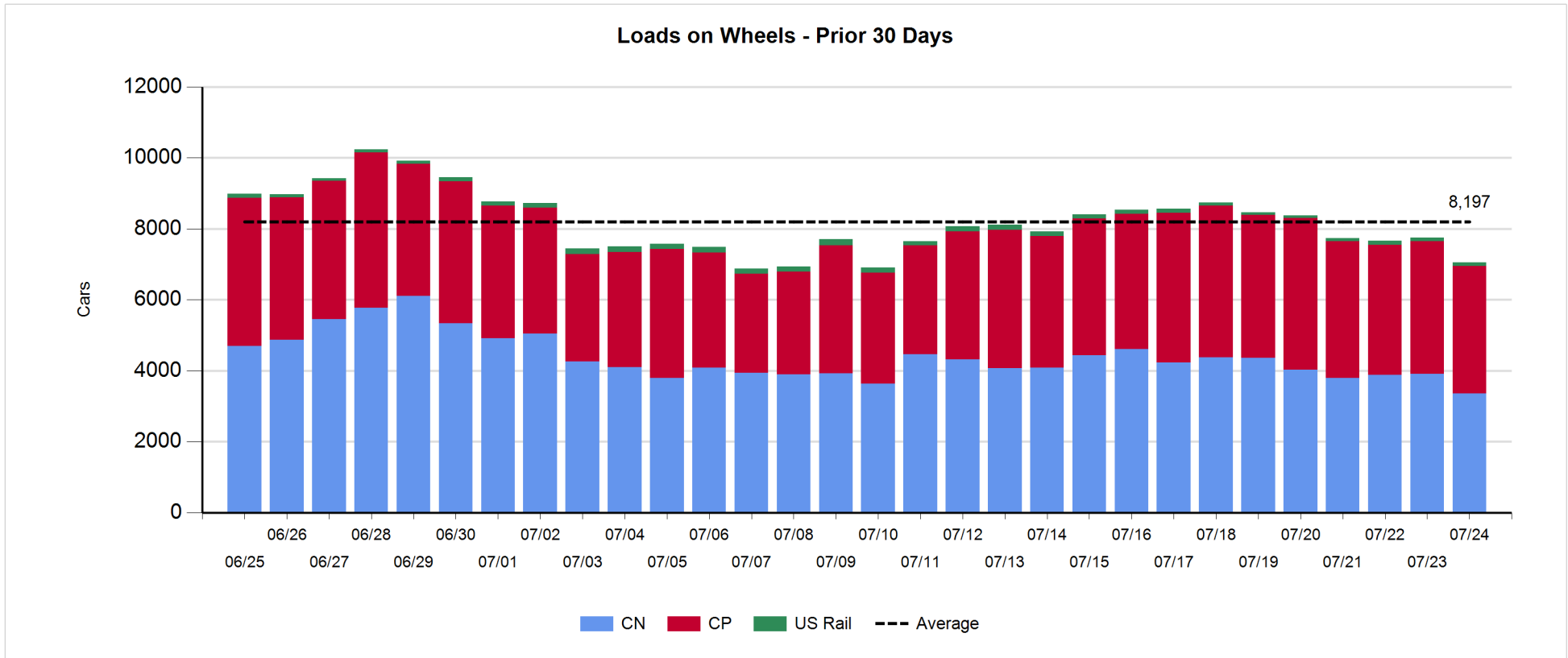
- CN and CP reported a total of 1,162 cars unloaded at the three major ports, now 16% above the trailing 30-day average. Three days in Week 52 unloads now ahead of last week's pace by 700 unloads, reflecting higher unloads across all three major ports - Vancouver, Thunder Bay and Prince Rupert.
- Vancouver
 - 729 unloads reported by CN and CP at the Port of Vancouver; CN - 330 and CP - 399. Three days in Week 52 unloads are tracking ahead of last week's performance by nearly 300 unloads.
 - There are nearly 1,250 cars on site at Vancouver with more than 650 cars arriving at the port in the last 24 hours.
 - CN and CP have more than 600 cars in British Columbia en route to Vancouver, with more than 150 cars at Kamloops and west, and 82% of traffic moving on CP.
- Prince Rupert
 - Prince Rupert reported 177 unloads, now ahead of last week's unloads after three days by less than 200 unloads.
 - Loads on wheels now below 1,000 cars - currently at 775 cars.
 - There are 250 cars west of Jasper en route to Prince Rupert.
 - There are 200 cars on site at Prince Rupert with 150 cars arriving at the port in the last 24 hours.
- Thunder Bay
 - 256 unloads were reported at Thunder Bay yesterday. Three days in Week 52 unloads are tracking ahead of last week's pace by around 250 unloads.
 - There are more than 600 cars on site at Thunder Bay with more than 100 cars arriving at the port in the prior 24 hours.
 - There are 500 cars en route to Thunder Bay from Winnipeg and east.

Daily Loads on Wheels - 7/24/2019

	E Canada	Prince Rupert	Thunder Bay	USA/MEX	Vancouver	Total
CN	260	775	503	118	1,701	3,357
CP	61		1,185	163	2,179	3,588
Short Line	4				61	65
US Rail				45		45
	325	775	1,688	326	3,941	7,055

Change in Loads on Wheels - Prior 24 Hours

	E Canada	Prince Rupert	Thunder Bay	USA/MEX	Vancouver	Total
CN	-21	-177	-39	9	-324	-552
CP	-6		49	-68	-117	-142
Short Line	0				-1	-1
US Rail				-3		-3
	-27	-177	10	-62	-442	-698

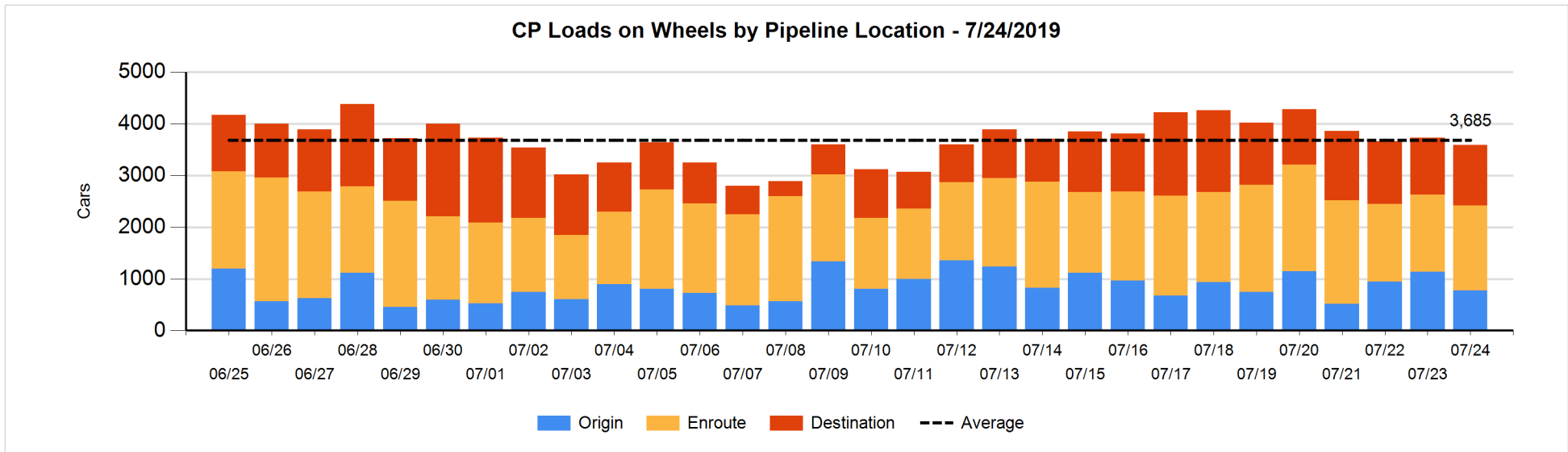
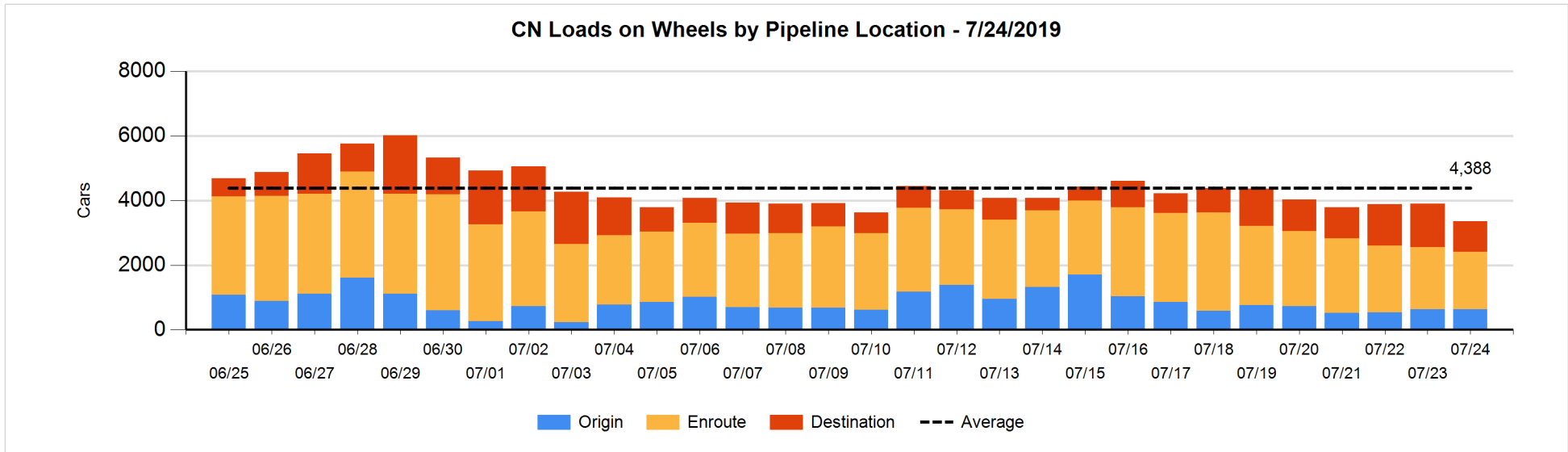


Daily Loads on Wheels By Pipeline Location - 7/24/2019

	E Canada	Prince Rupert	Thunder Bay	USA/MEX	Vancouver	Total
CN						
Origin	27	9	98	13	482	629
Enroute	117	560	251	94	755	1,777
Destination	116	206	154	11	464	951
	260	775	503	118	1,701	3,357
CP						
Origin	27		240	1	504	772
Enroute	29		487	162	969	1,647
Destination	5		458		706	1,169
	61		1,185	163	2,179	3,588
US Rail / Short Line						
Origin						
Enroute				35		35
Destination	4			10	61	75
	4			45	61	110

Change in Daily Loads on Wheels By Pipeline Location - Prior 24 Hours

	E Canada	Prince Rupert	Thunder Bay	USA/MEX	Vancouver	Total
CN						
Origin	16	-104	98	7	-25	-8
Enroute	-17	-37	-101	3	18	-134
Destination	-20	-36	-36	-1	-317	-410
	-21	-177	-39	9	-324	-552
CP						
Origin	-1		-85	-8	-265	-359
Enroute	1		236	4	-89	152
Destination	-6		-102	-64	237	65
	-6		49	-68	-117	-142
US Rail / Short Line						
Origin						
Enroute				8		8
Destination	0			-11	-1	-12
	0			-3	-1	-4

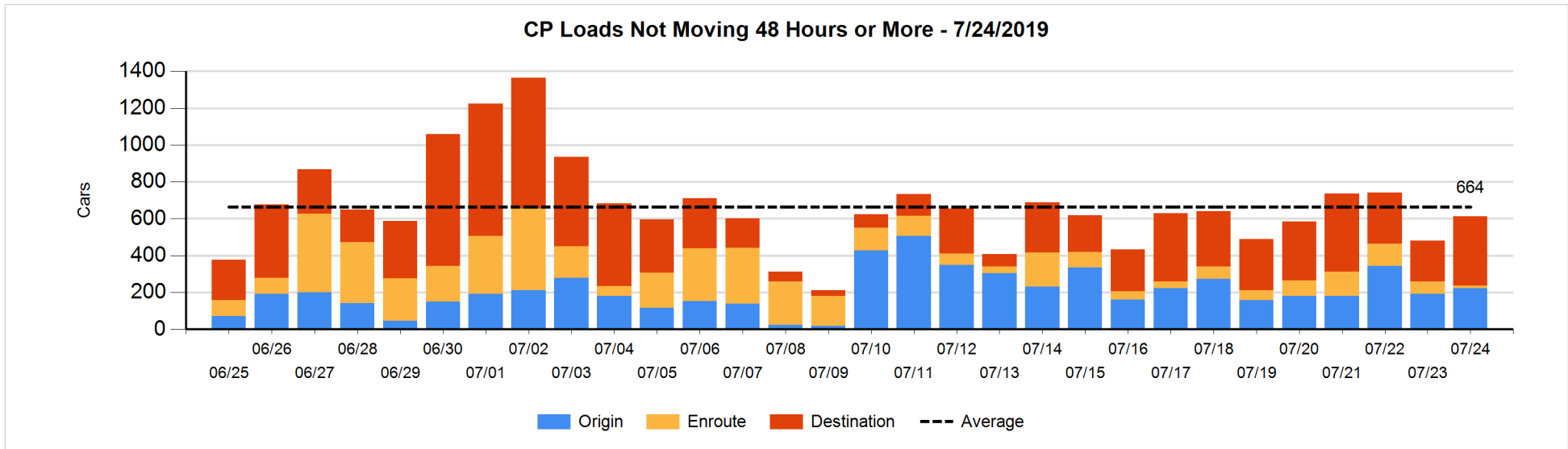
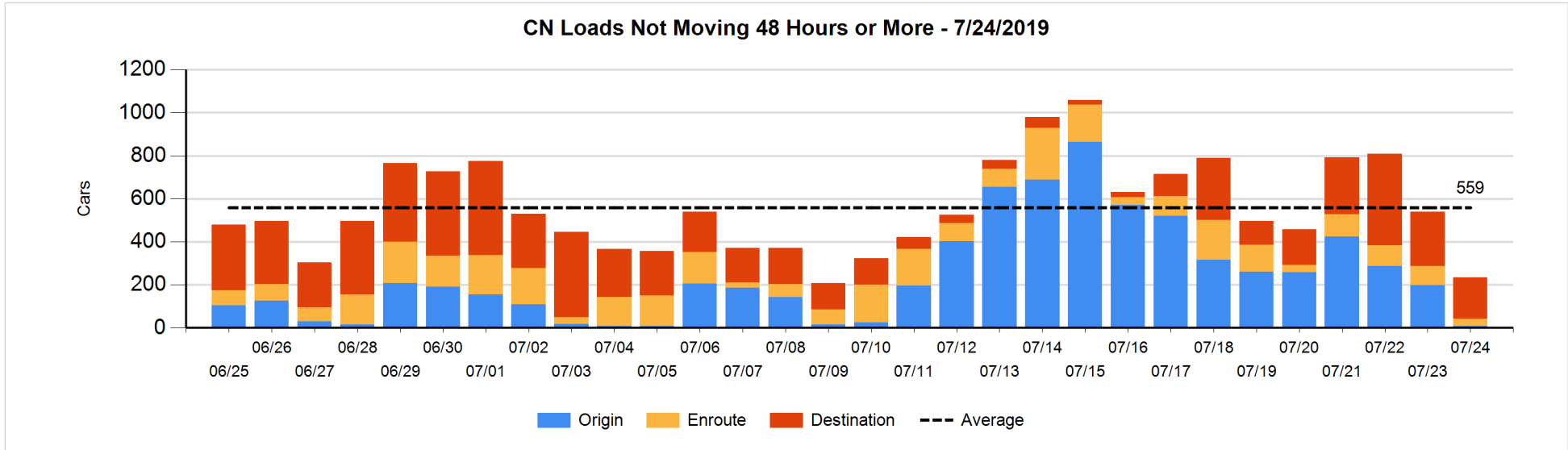


Loads Not Moving 48 Hours or More - 7/24/2019

	E Canada	Prince Rupert	Thunder Bay	USA/MEX	Vancouver	Total
CN						
Origin	1			1	5	7
Enroute	6	17		2	10	35
Destination	102	6	4		80	192
	109	23	4	3	95	234
CP						
Origin	25		74	1	123	223
Enroute	1		1		12	14
Destination	1		132		243	376
	27		207	1	378	613
US Rail / Short Line						
Origin						
Enroute				14		14
Destination	4			8	29	41
	4			22	29	55

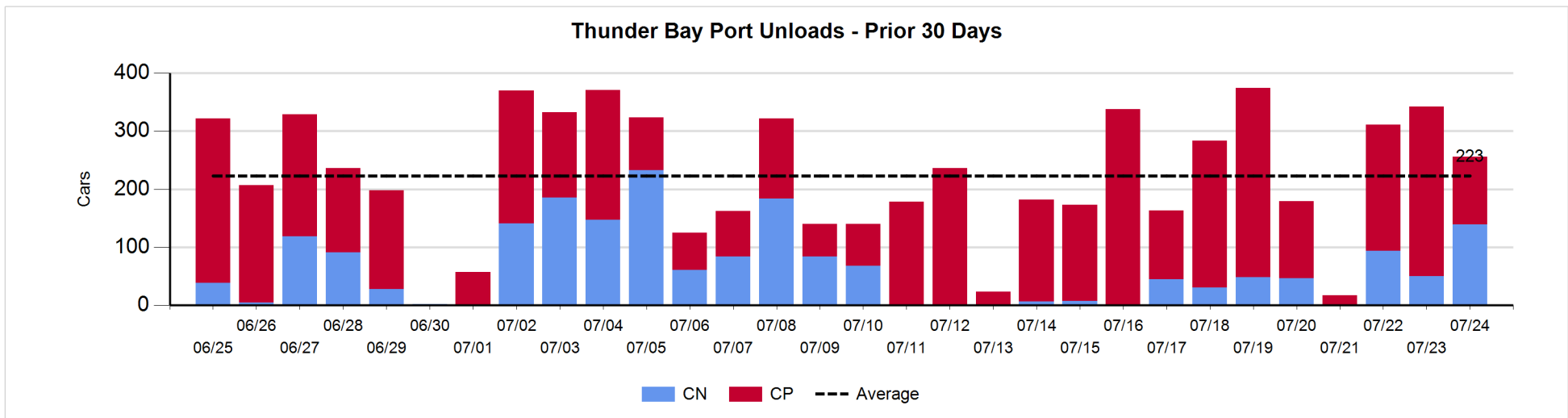
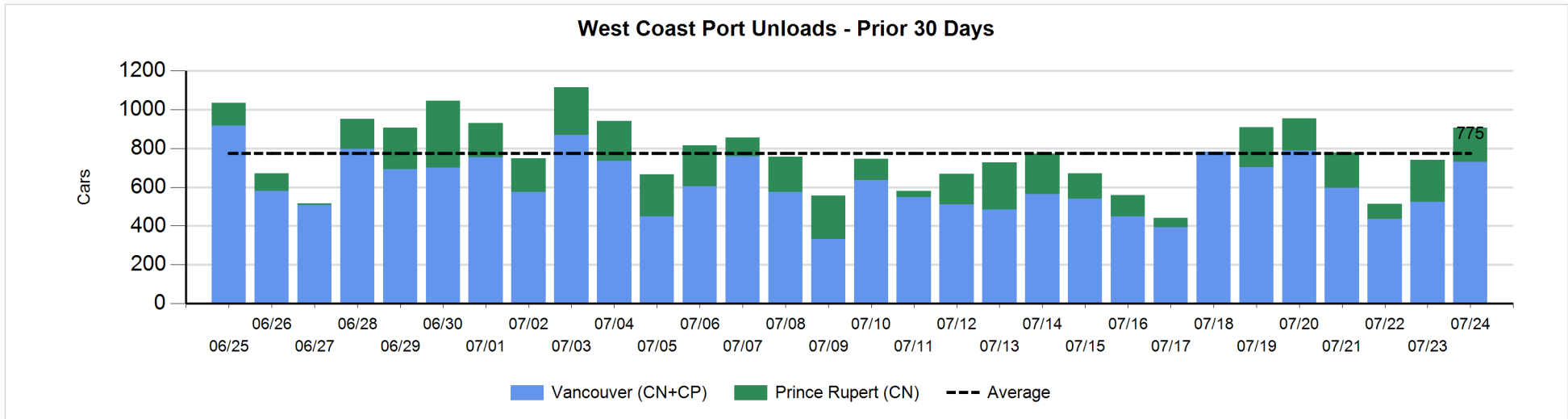
Change in Loads Not Moving 48 Hours or More - 7/24/2019

	E Canada	Prince Rupert	Thunder Bay	USA/MEX	Vancouver	Total
CN						
Origin	1			1	-192	-190
Enroute	-64	2		2	5	-55
Destination	-2	0	-29		-29	-60
	-65	2	-29	3	-216	-305
CP						
Origin	1		-26	-7	63	31
Enroute	0		-14		-39	-53
Destination	0		34		121	155
	1		-6	-7	145	133
US Rail / Short Line						
Origin						
Enroute				2		2
Destination	0			-6	13	7
	0			-4	13	9



Port Unloads - 7/24/2019

	Prince Rupert	Vancouver	West Coast Total	Thunder Bay	Total
CN	177	330	507	139	646
CP		399	399	117	516
	177	729	906	256	1,162



Port Terminal Status

Vancouver

Daily Activity for 7/24/2019

	Cars Arrived	Cars Received in Interchange	Cars Delivered in Interchange	Cars Placed for Unloading	Loads on Wheels at Destination As of 7/24/2019
CN	183	3	180	298	464
CP	478	180	13	424	706
SRY		10		14	61

Port Unloads

	07/24	07/23	Week To Date	Last Week
CN	330	215	749	2,177
CP	399	310	940	2,075
SRY	12	10	24	62

Age Profile of Loaded Cars Waiting Placement for Unloading

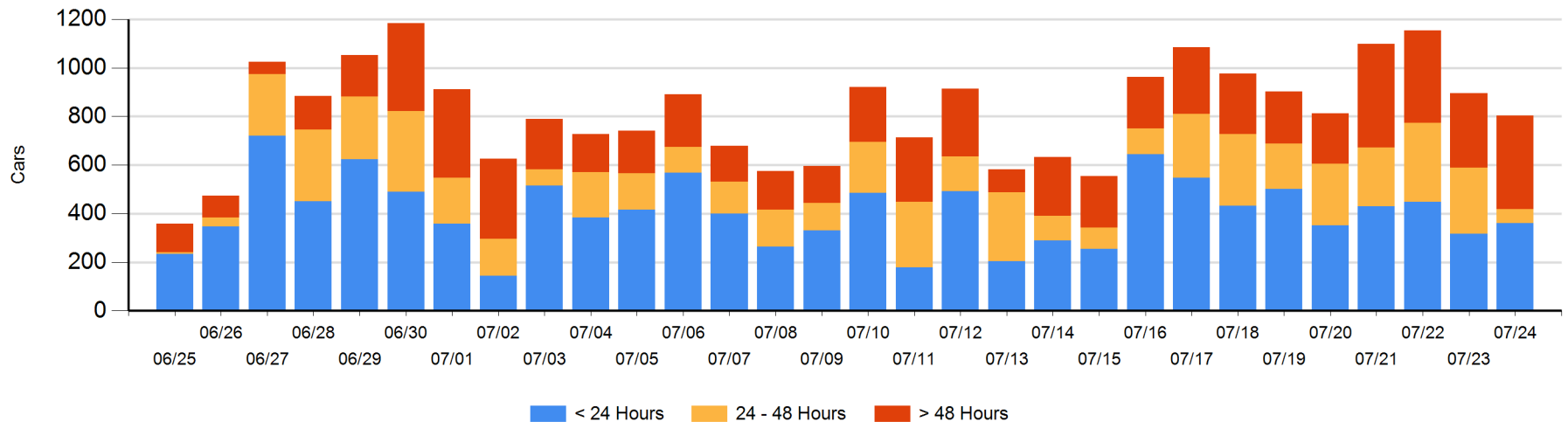
Today

	< 24 Hrs	24 - 48 Hrs	> 48-72 Hrs	> 72 Hrs	Total On Hand
CN	106	23	10	47	186
CP	254	36	207	121	618
SRY					0

Change in Last 24 Hours

	< 24 Hrs	24-48 Hrs	48 - 72 Hrs	> 72 Hrs
CN	-122	-42	-36	44
CP	165	-172	176	-104
SRY				

Loaded Cars on Hand Vancouver Waiting for Placement - Last 30 Days All Railways



Port Terminal Status

Prince Rupert

Daily Activity for 7/24/2019

	Cars Arrived	Cars Received in Interchange	Cars Delivered in Interchange	Cars Placed for Unloading	Loads on Wheels at Destination As of 7/24/2019
CN	141			141	206

Port Unloads

	07/24	07/23	Week To Date	Last Week
CN	177	215	471	841

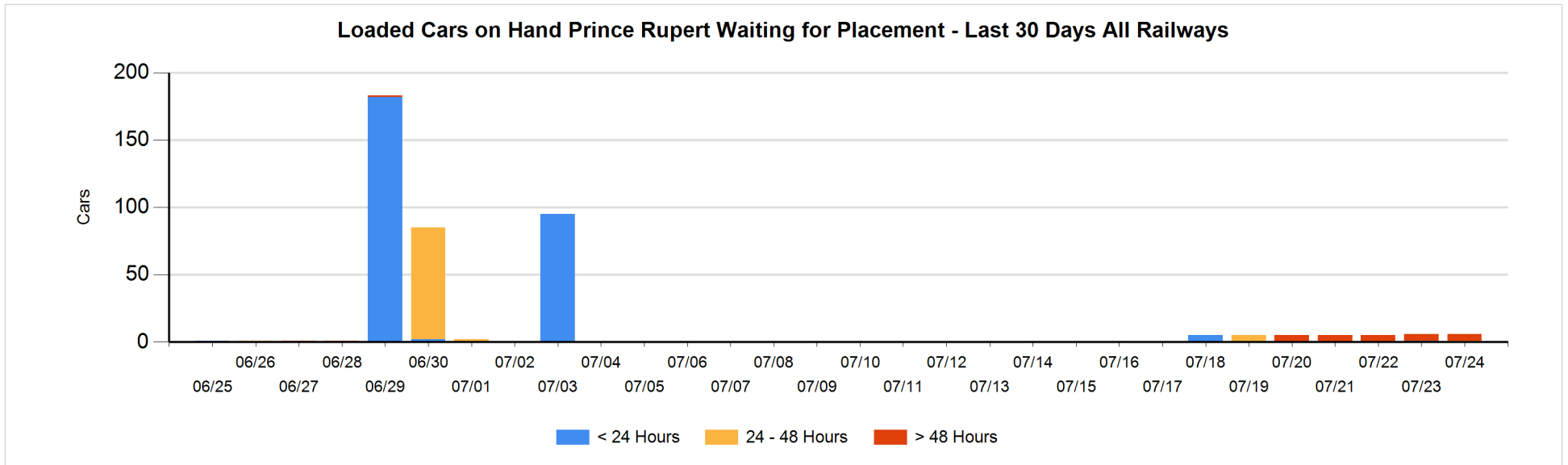
Age Profile of Loaded Cars Waiting Placement for Unloading

Today

	< 24 Hrs	24 - 48 Hrs	> 48-72 Hrs	> 72 Hrs	Total On Hand
CN		1		5	6

Change in Last 24 Hours

	< 24 Hrs	24-48 Hrs	48 - 72 Hrs	> 72 Hrs
CN	-1	1		0



Port Terminal Status

Thunder Bay

Daily Activity for 7/24/2019

	Cars Arrived	Cars Received in Interchange	Cars Delivered in Interchange	Cars Placed for Unloading	Loads on Wheels at Destination As of 7/24/2019
CN	103			199	154
CP	15			140	458

Port Unloads

	07/24	07/23	Week To Date	Last Week
CN	139	50	283	177
CP	117	292	626	1,350

Age Profile of Loaded Cars Waiting Placement for Unloading

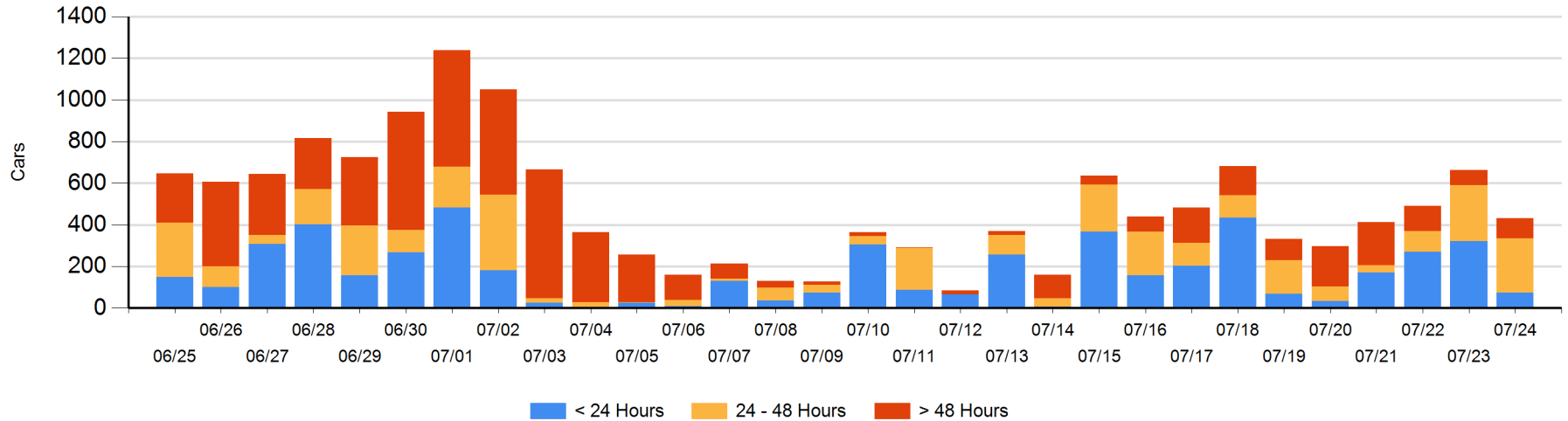
Today

	< 24 Hrs	24 - 48 Hrs	> 48-72 Hrs	> 72 Hrs	Total On Hand
CN	61				61
CP	14	260	72	25	371

Change in Last 24 Hours

	< 24 Hrs	24-48 Hrs	48 - 72 Hrs	> 72 Hrs
CN	61	-157		
CP	-306	147	61	-36

Loaded Cars on Hand Thunder Bay Waiting for Placement - Last 30 Days All Railways



Measurement Definitions

Loads on Wheels	<p>Count of loaded rail cars including all rail cars that have been released loaded at origin and have not been reported by the railway as unloaded at destination.</p> <p>Counts include all rail cars (hopper cars and boxcars) moving within a pipeline.</p>
Loads Not Moving	<p>Loaded rail cars for which the railways have not reported a movement event for 48 hours or more whether the rail car is at origin, enroute or at destination.</p>
Port Unloads	<p>Count of rail cars reported by railways as unloaded at the western port destinations of Vancouver, Prince Rupert and Thunder Bay.</p> <p>Unload counts include all rail cars (hopper cars and boxcars) unloaded by all receivers including major port terminals, transloaders and other receivers.</p>
Cars Arrived	<p>Count of rail cars reported as arrived at the destination railway terminal.</p>
Cars Received in Interchange	<p>Count of rail cars received in interchange by each railway within a destination railway terminal. Interchange activity is tracked for the Vancouver and Thunder Bay pipelines as applicable.</p>
Cars Delivered in Interchange	<p>Count of rail cars delivered in interchange by each railway within a destination railway terminal. Interchange activity is tracked for the Vancouver and Thunder Bay pipelines as applicable.</p>
Cars Placed for Unloading	<p>Count of rail cars reported by the railways as placed loaded at the receiver's facility for unloading.</p>
Loads on Wheels at Destination	<p>Count of rail cars that remain under load within the destination railway terminal including rail cars that have been reported as placed for unloading but not yet reported as unloaded.</p>
Waiting Placement for Unloading	<p>Count of rail cars that have been reported as arrived at the destination railway terminal but not reported as placed for unloading by the railway.</p> <p>For the Ports of Vancouver, Prince Rupert and Thunder Bay the count of rail cars waiting placement for unloading is categorized by age – i.e. the elapsed time from arrival at destination to the current report date.</p>