

SPEED READ

- Loads on wheels increased overnight, reflecting a rise in CN volumes offset by reduced CP volumes. On a net basis, volumes increased due to higher volumes in the E. Canada, Vancouver and Prince Rupert corridors offset by reduced volumes in the Thunder Bay and USA/MEX corridors.
- Network fluidity improved overnight, led by a decline in idle car counts on both CN and CP by 8% (-18) and 10% (-64), respectively. The total count of cars for 4+ days on both railways declined 19% (-85) overnight - presently at 353 cars.
- Four days in Week 52 unloads now ahead of prior week's performance by 600 unloads, reflecting improved week over week performance at Prince Rupert and Thunder Bay offset by reduced unloads at Vancouver.

Loads on Wheels

- Loads on wheels increased 5% (+341) overnight, due to higher volumes on CN offset by reduced volumes on CP - combined total at 7,401 and 9% below the trailing 30-day average.
- On a net basis, the increase in loads on wheels indicates higher volumes in the E. Canada, Vancouver and Prince Rupert corridors offset by reduced volumes in the Thunder Bay and USA/MEX corridors.
- CN volumes gained significantly by 16% (+529) overnight, with higher volumes across all corridors other than Thunder Bay. System wide CN loads on wheels now at 3,886 and 11% below the trailing 30-day average.
- CP volumes declined 5% (-178) overnight, driven by a decline in volumes across all corridors other than Vancouver. CP system wide loads on wheels now at 3,415 and 7% below the trailing 30-day average.
- Vancouver presently at 4,198, increased 6% (+254) overnight, now 9% below the trailing 30-day average.
- The Prince Rupert pipeline presently at 785, increased marginally by 1% (+10) overnight, and 38% below the trailing 30-day average.
- Thunder Bay volumes declined significantly by 11% (-190) overnight - now at 1,498 and 2% above the trailing 30-day average, with 72% of traffic moving on CP.

Hopper Car Rationing

- No hopper cars were rationed by either CN or CP in week 50.

Loads Not Moving

- **The count of cars not moving for 48+ hours decreased for the third consecutive day, down 10% (-82) overnight, reflecting lower counts on both CN and CP. Idle car counts presently at 770 and 37% below the trailing 30-day average.**
- CN
 - **The count of idle cars for 48+ hours decreased 8% (-18) overnight and have now decreased for the third consecutive day - currently at 216 cars.**
 - The number of cars idle for 4+ days increased 2% (+3) overnight - now at 130 cars.
 - The count of cars not moving for 7+ days increased significantly by 65% (+11) overnight - presently at 28 cars.
 - Vancouver represents 14% of all idle cars.
 - In total 6% of all idle cars are dwelling at origin locations.
- CP
 - **CP idle car counts for 48+ hours declined 10% (-64) overnight - now at 554 cars.**
 - The number of cars idle for 4+ days declined 28% (-88) overnight - now at 223 cars.

- The number of cars idle for 7+ days increased 19% (+9) overnight - presently at 57 cars.
- Vancouver accounts for 48% of all idle cars.
- In total 34% of all idle cars are dwelling at origin locations.

Port Performance

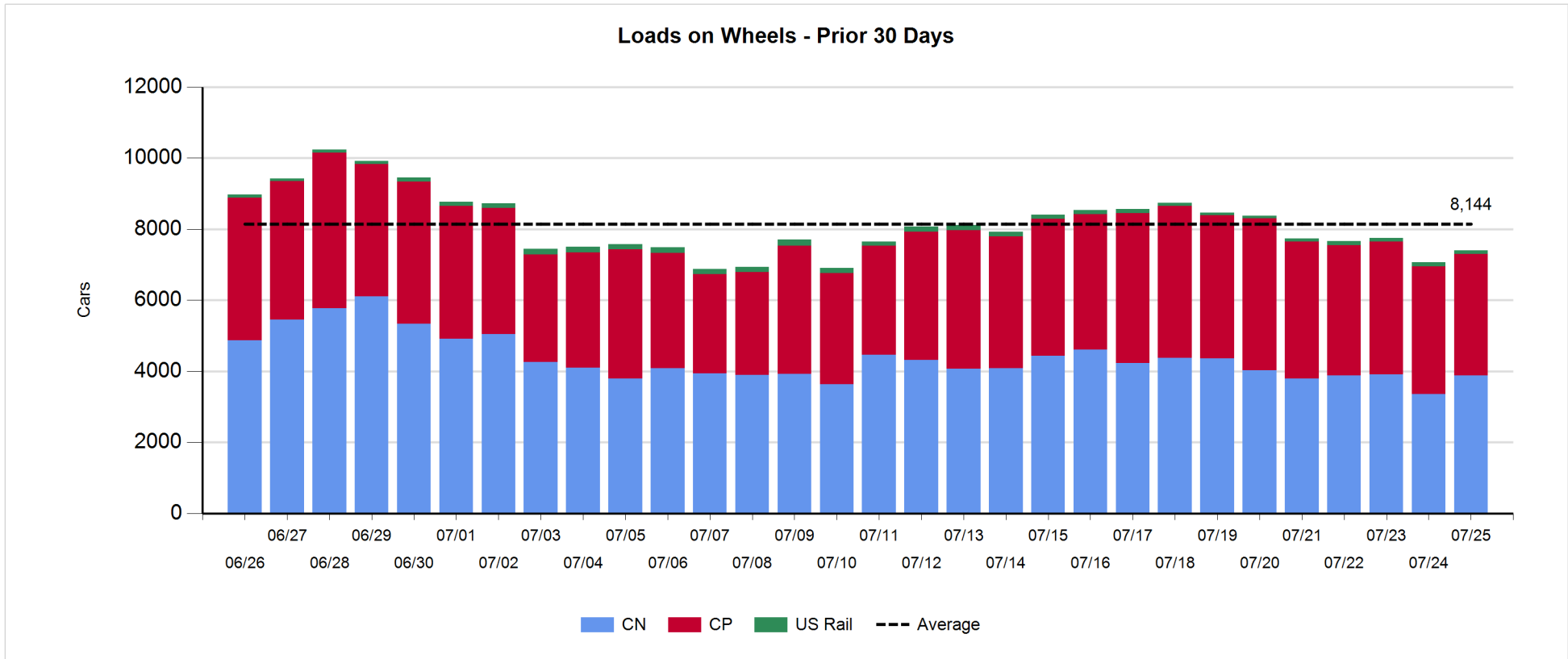
- CN and CP reported a total of 966 cars unloaded at the three major ports, now 2% below the trailing 30-day average. Four days in Week 52 unloads now ahead of last week's pace by 600 unloads, reflecting higher unloads at Prince Rupert and Thunder Bay offset by reduced unloads at Vancouver.
- Vancouver
 - 447 unloads reported by CN and CP at the Port of Vancouver; CN - 129 and CP - 318. Four days in Week 52 unloads are tracking behind last week's performance by 50 unloads.
 - There are more than 1,450 cars on site at Vancouver with 700 cars arriving at the port in the last 24 hours.
 - CN and CP have more than 600 cars in British Columbia en route to Vancouver, with more than 150 cars at Kamloops and west, and 63% of traffic moving on CP.
- Prince Rupert
 - Prince Rupert reported 203 unloads, now ahead of last week's unloads after four days by fewer than 400 unloads.
 - Loads on wheels now below 1,000 cars - currently at 785 cars.
 - There are more than 250 cars west of Jasper en route to Prince Rupert.
 - There are 100 cars on site at Prince Rupert with 100 cars arriving at the port in the last 24 hours.
- Thunder Bay
 - 316 unloads were reported at Thunder Bay yesterday. Four days in Week 52 unloads are tracking ahead of last week's pace by more than 250 unloads.
 - There are less than 650 cars on site at Thunder Bay with less than 350 cars arriving at the port in the prior 24 hours.
 - There are more than 400 cars en route to Thunder Bay from Winnipeg and east.

Daily Loads on Wheels - 7/25/2019

	E Canada	Prince Rupert	Thunder Bay	USA/MEX	Vancouver	Total
CN	590	785	414	152	1,945	3,886
CP	60		1,084	70	2,201	3,415
Short Line	4				52	56
US Rail				44		44
	654	785	1,498	266	4,198	7,401

Change in Loads on Wheels - Prior 24 Hours

	E Canada	Prince Rupert	Thunder Bay	USA/MEX	Vancouver	Total
CN	330	10	-89	34	244	529
CP	-2		-101	-94	19	-178
Short Line	0				-9	-9
US Rail				-1		-1
	328	10	-190	-61	254	341

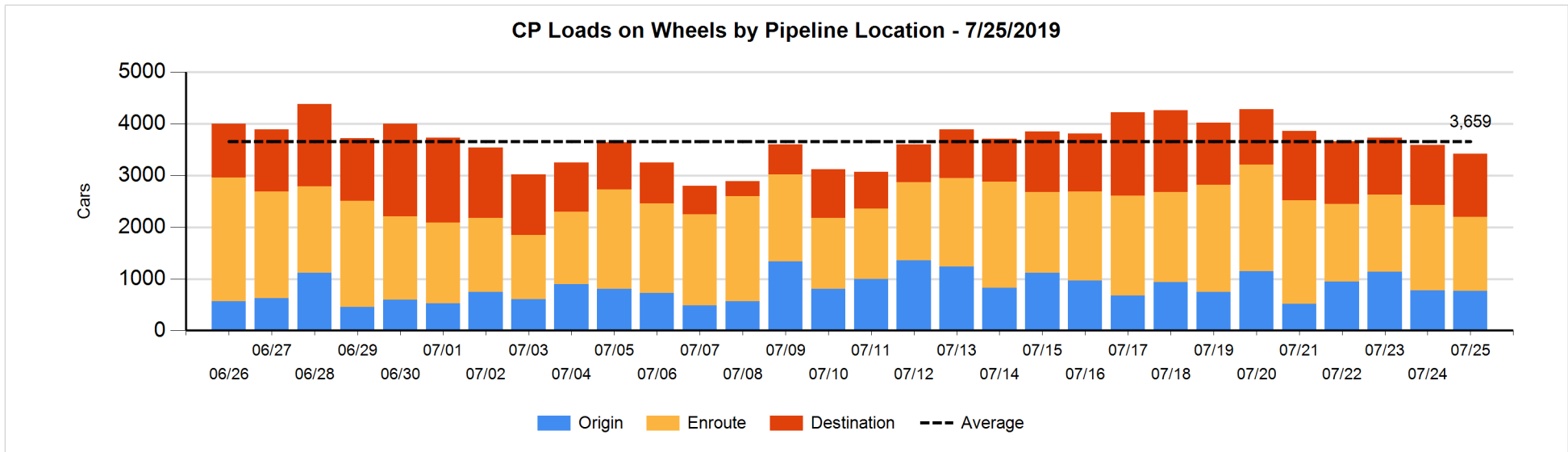
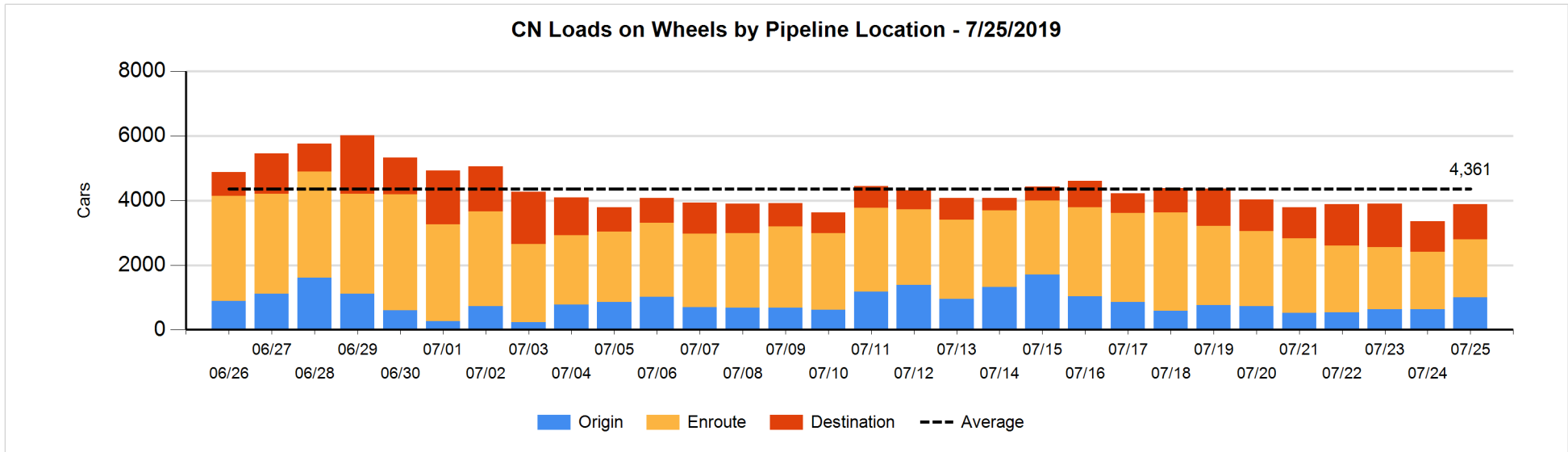


Daily Loads on Wheels By Pipeline Location - 7/25/2019

	E Canada	Prince Rupert	Thunder Bay	USA/MEX	Vancouver	Total
CN						
Origin	311	196	98	9	390	1,004
Enroute	133	493	154	134	882	1,796
Destination	146	96	162	9	673	1,086
	590	785	414	152	1,945	3,886
CP						
Origin	4		282	1	480	767
Enroute	46		334	69	982	1,431
Destination	10		468		739	1,217
	60		1,084	70	2,201	3,415
US Rail / Short Line						
Origin						
Enroute				34		34
Destination	4			10	52	66
	4			44	52	100

Change in Daily Loads on Wheels By Pipeline Location - Prior 24 Hours

	E Canada	Prince Rupert	Thunder Bay	USA/MEX	Vancouver	Total
CN						
Origin	284	187	0	-4	-92	375
Enroute	16	-67	-97	40	127	19
Destination	30	-110	8	-2	209	135
	330	10	-89	34	244	529
CP						
Origin	-23		42	0	-27	-8
Enroute	16		-153	-94	13	-218
Destination	5		10		33	48
	-2		-101	-94	19	-178
US Rail / Short Line						
Origin						
Enroute				-1		-1
Destination	0			0	-9	-9
	0			-1	-9	-10

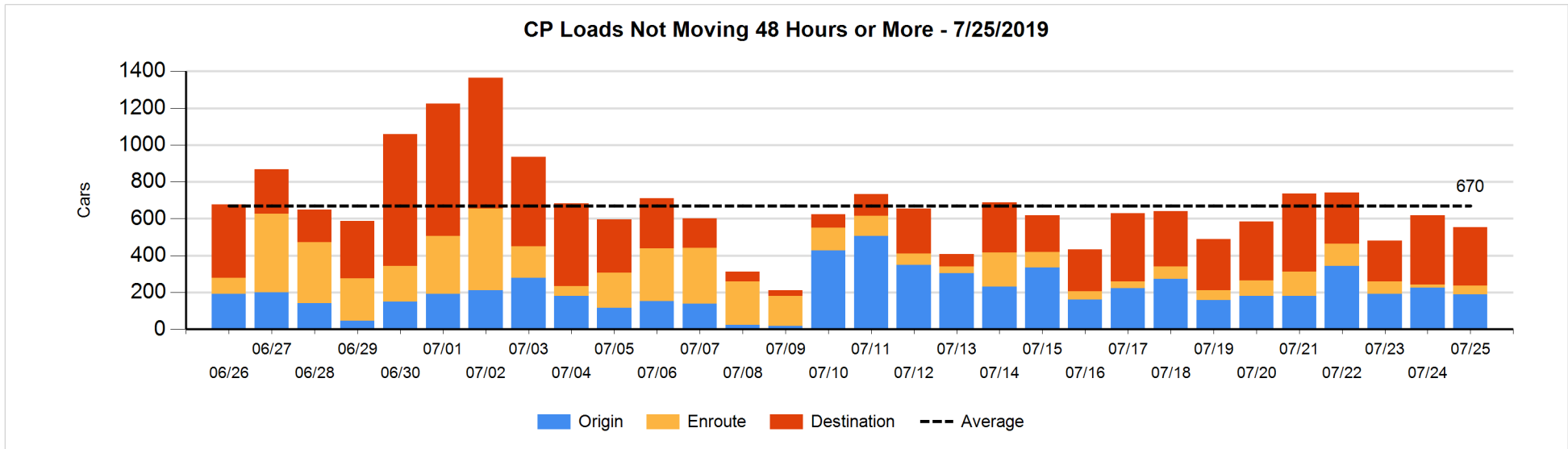
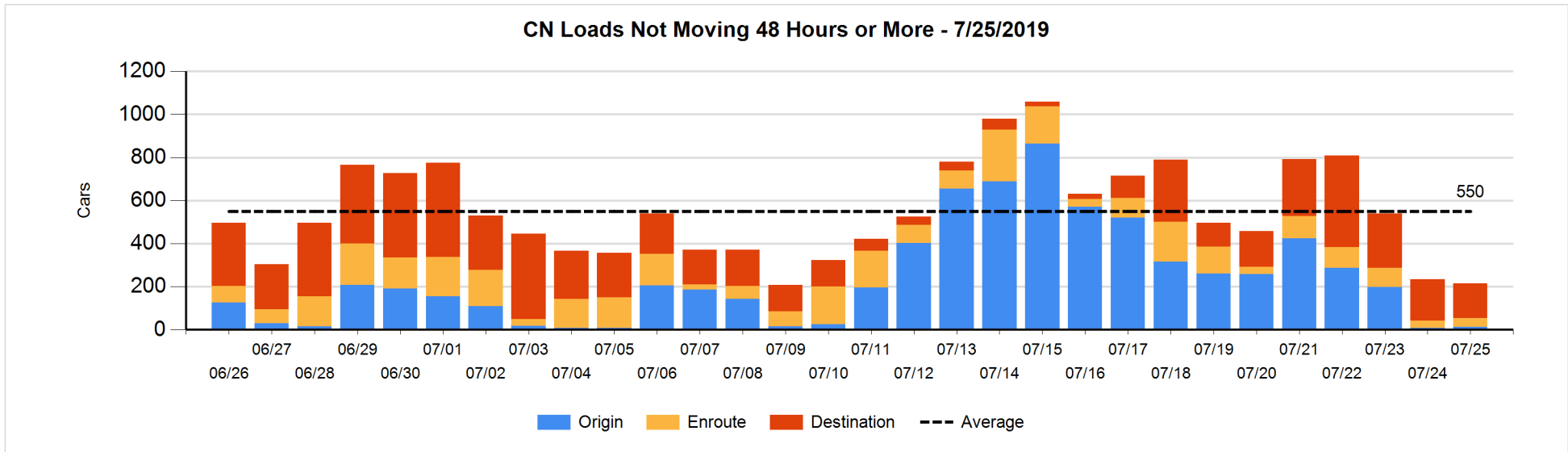


Loads Not Moving 48 Hours or More - 7/25/2019

	E Canada	Prince Rupert	Thunder Bay	USA/MEX	Vancouver	Total
CN						
Origin		9			5	14
Enroute	5	12	1	12	10	40
Destination	93	41	4	9	15	162
	98	62	5	21	30	216
CP						
Origin	2		56	1	130	189
Enroute	16		12		19	47
Destination	2		197		119	318
	20		265	1	268	554
US Rail / Short Line						
Origin						
Enroute				14		14
Destination	4			9	30	43
	4			23	30	57

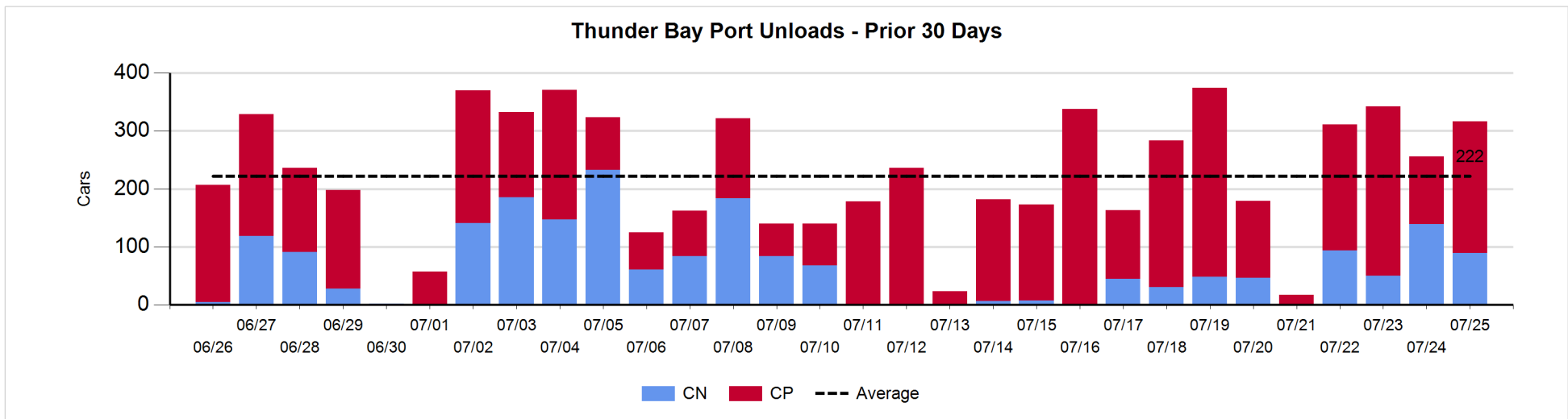
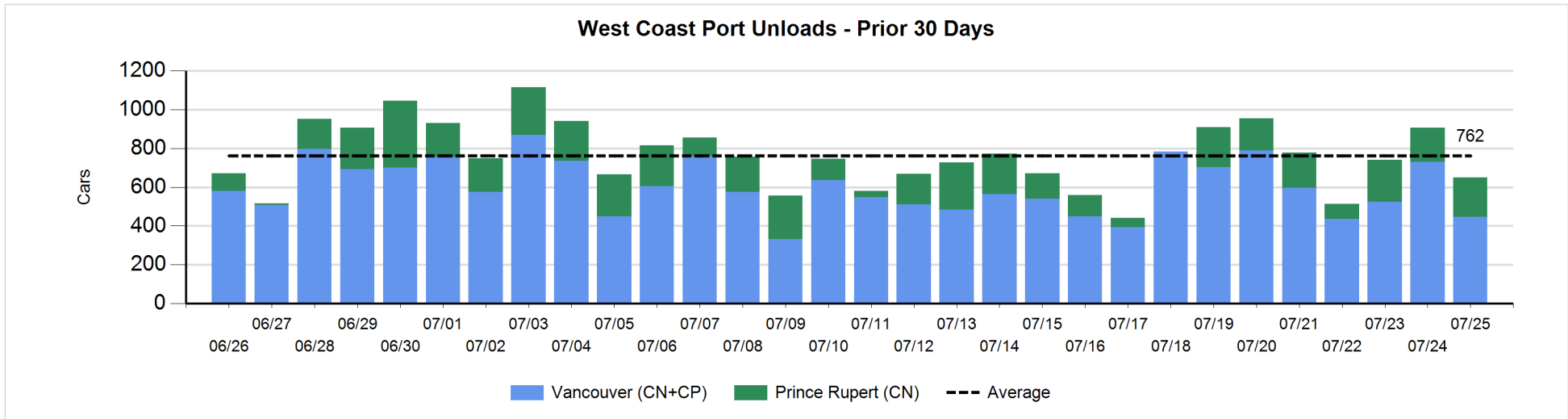
Change in Loads Not Moving 48 Hours or More - 7/25/2019

	E Canada	Prince Rupert	Thunder Bay	USA/MEX	Vancouver	Total
CN						
Origin	-1	9		-1	0	7
Enroute	-1	-5	1	10	0	5
Destination	-9	35	0	9	-65	-30
	-11	39	1	18	-65	-18
CP						
Origin	-23		-18	0	4	-37
Enroute	14		11	-1	7	31
Destination	1		65		-124	-58
	-8		58	-1	-113	-64
US Rail / Short Line						
Origin						
Enroute				0		0
Destination	0			1	1	2
	0			1	1	2



Port Unloads - 7/25/2019

	Prince Rupert	Vancouver	West Coast Total	Thunder Bay	Total
CN	203	129	332	89	421
CP		318	318	227	545
	203	447	650	316	966



Port Terminal Status

Vancouver

Daily Activity for 7/25/2019

	Cars Arrived	Cars Received in Interchange	Cars Delivered in Interchange	Cars Placed for Unloading	Loads on Wheels at Destination As of 7/25/2019
CN	238		167	262	673
CP	453	165	7	344	739
SRY		9		11	52

Port Unloads

	07/25	07/24	Week To Date	Last Week
CN	129	330	878	2,177
CP	318	399	1,258	2,075
SRY	11	12	35	62

Age Profile of Loaded Cars Waiting Placement for Unloading

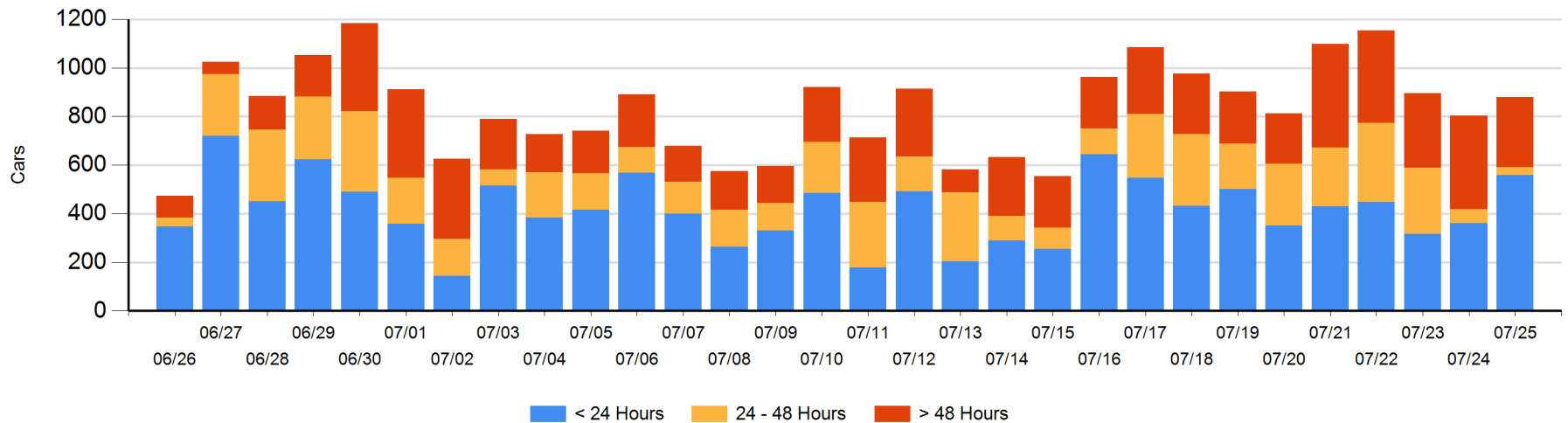
Today

	< 24 Hrs	24 - 48 Hrs	> 48-72 Hrs	> 72 Hrs	Total On Hand
CN	209	2		53	264
CP	350	30	17	219	616
SRY					0

Change in Last 24 Hours

	< 24 Hrs	24-48 Hrs	48 - 72 Hrs	> 72 Hrs
CN	103	-21	-10	6
CP	96	-6	-190	98
SRY				

Loaded Cars on Hand Vancouver Waiting for Placement - Last 30 Days All Railways



Port Terminal Status

Prince Rupert

Daily Activity for 7/25/2019

	Cars Arrived	Cars Received in Interchange	Cars Delivered in Interchange	Cars Placed for Unloading	Loads on Wheels at Destination As of 7/25/2019
CN	97			94	96

Port Unloads

	07/25	07/24	Week To Date	Last Week
CN	203	177	674	841

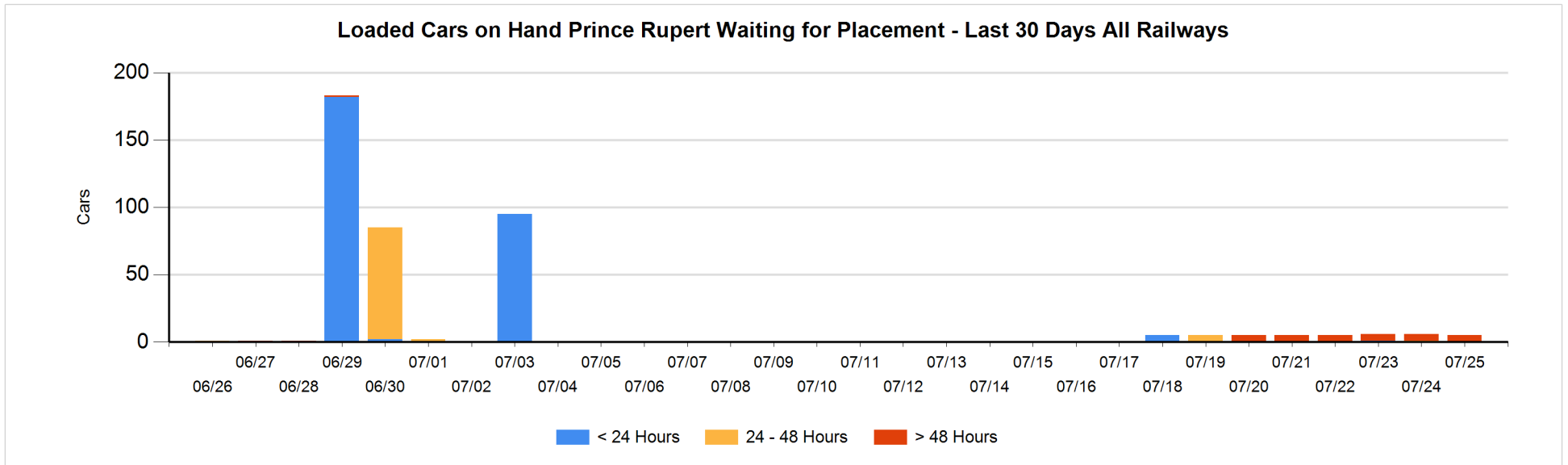
Age Profile of Loaded Cars Waiting Placement for Unloading

Today

	< 24 Hrs	24 - 48 Hrs	> 48-72 Hrs	> 72 Hrs	Total On Hand
CN				5	5

Change in Last 24 Hours

	< 24 Hrs	24-48 Hrs	48 - 72 Hrs	> 72 Hrs
CN		-1		0



Port Terminal Status

Thunder Bay

Daily Activity for 7/25/2019

	Cars Arrived	Cars Received in Interchange	Cars Delivered in Interchange	Cars Placed for Unloading	Loads on Wheels at Destination As of 7/25/2019
CN	97				162
CP	237			212	468

Port Unloads

	07/25	07/24	Week To Date	Last Week
CN	89	139	372	177
CP	227	117	853	1,350

Age Profile of Loaded Cars Waiting Placement for Unloading

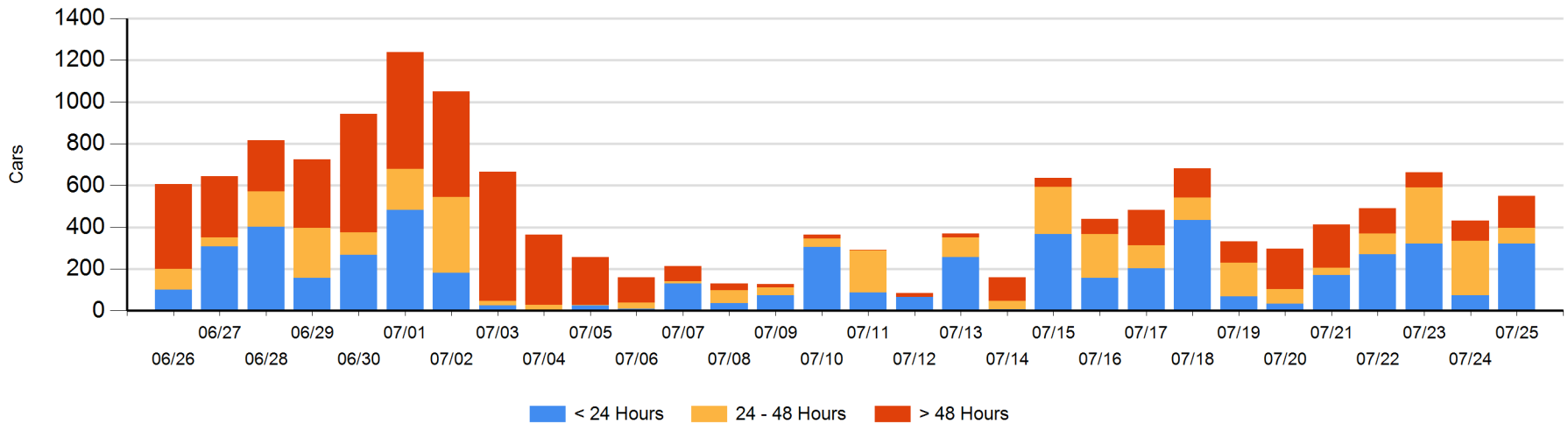
Today

	< 24 Hrs	24 - 48 Hrs	> 48-72 Hrs	> 72 Hrs	Total On Hand
CN	97	61			158
CP	225	14	86	68	393

Change in Last 24 Hours

	< 24 Hrs	24-48 Hrs	48 - 72 Hrs	> 72 Hrs
CN	36	61		
CP	211	-246	14	43

Loaded Cars on Hand Thunder Bay Waiting for Placement - Last 30 Days All Railways



Measurement Definitions

Loads on Wheels	<p>Count of loaded rail cars including all rail cars that have been released loaded at origin and have not been reported by the railway as unloaded at destination.</p> <p>Counts include all rail cars (hopper cars and boxcars) moving within a pipeline.</p>
Loads Not Moving	<p>Loaded rail cars for which the railways have not reported a movement event for 48 hours or more whether the rail car is at origin, enroute or at destination.</p>
Port Unloads	<p>Count of rail cars reported by railways as unloaded at the western port destinations of Vancouver, Prince Rupert and Thunder Bay.</p> <p>Unload counts include all rail cars (hopper cars and boxcars) unloaded by all receivers including major port terminals, transloaders and other receivers.</p>
Cars Arrived	<p>Count of rail cars reported as arrived at the destination railway terminal.</p>
Cars Received in Interchange	<p>Count of rail cars received in interchange by each railway within a destination railway terminal. Interchange activity is tracked for the Vancouver and Thunder Bay pipelines as applicable.</p>
Cars Delivered in Interchange	<p>Count of rail cars delivered in interchange by each railway within a destination railway terminal. Interchange activity is tracked for the Vancouver and Thunder Bay pipelines as applicable.</p>
Cars Placed for Unloading	<p>Count of rail cars reported by the railways as placed loaded at the receiver's facility for unloading.</p>
Loads on Wheels at Destination	<p>Count of rail cars that remain under load within the destination railway terminal including rail cars that have been reported as placed for unloading but not yet reported as unloaded.</p>
Waiting Placement for Unloading	<p>Count of rail cars that have been reported as arrived at the destination railway terminal but not reported as placed for unloading by the railway.</p> <p>For the Ports of Vancouver, Prince Rupert and Thunder Bay the count of rail cars waiting placement for unloading is categorized by age – i.e. the elapsed time from arrival at destination to the current report date.</p>